

GROUP 80B

SPLICE LOCATIONS

CONTENTS

HOW TO READ SPLICE LOCATIONS	80B-2	DASH PANEL.....	80B-6
INDEX.....	80B-3	FLOOR AND ROOF	80B-8
ENGINE COMPARTMENT.....	80B-4	DOOR	80B-9
ENGINE AND TRANSAXLE	80B-5	LUGGAGE COMPARTMENT.....	80B-10

HOW TO READ SPLICE LOCATIONS

M1802000100294

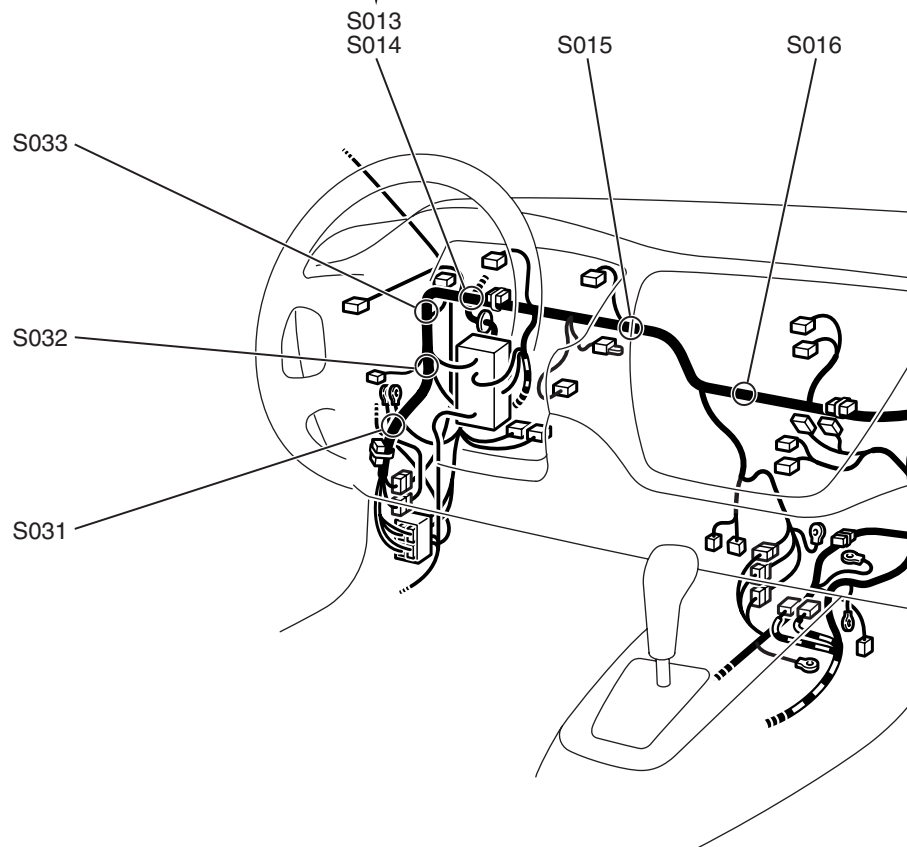
"Splice locations" describes splice points of each wiring harness on an actual vehicle.

Indicates a splice point number.
The splice point numbers are identical to those in "CIRCUIT DIAGRAMS," making them easy to use.
In addition, the splice point numbers are usually numbered clockwise.

Example: S 013

Sequential number

Prefix meaning splice point



AC100213AB

INDEX

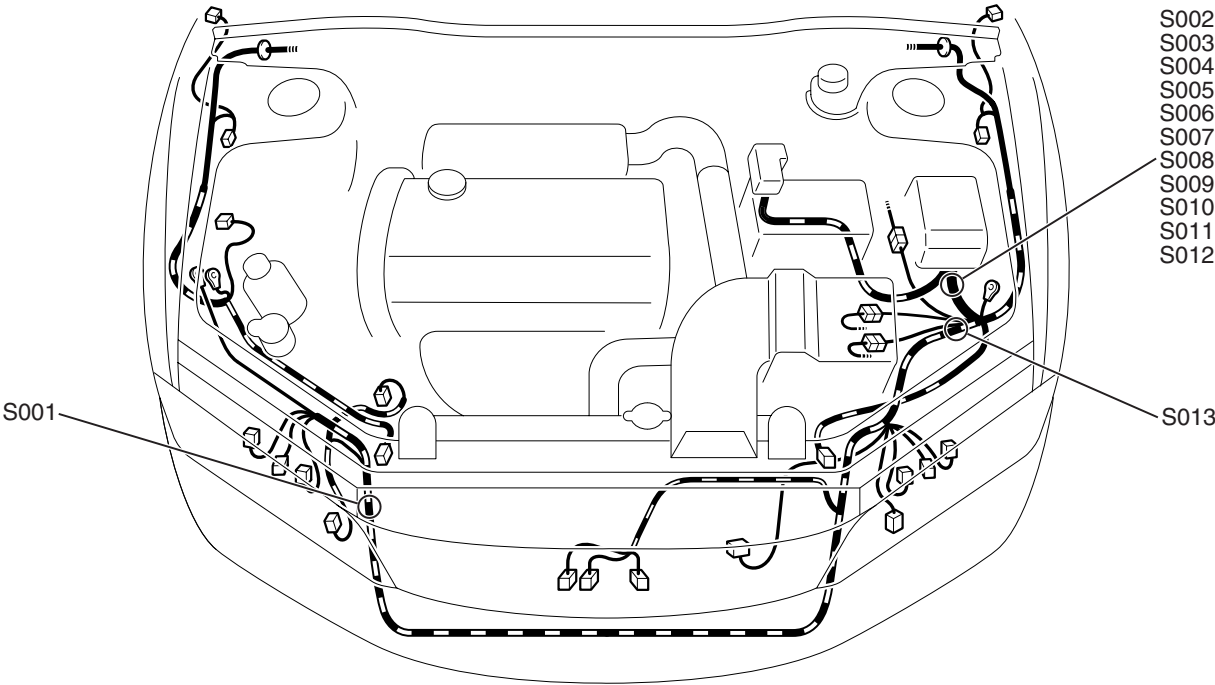
M1802000901152

This index shows the page numbers where the splice locations are.

SPLICE LOCATION NO.	PAGE	SPLICE LOCATION NO.	PAGE	SPLICE LOCATION NO.	PAGE	SPLICE LOCATION NO.	PAGE
S001	P.80B-4	S027	P.80B-6	S051	P.80B-7	S076	P.80B-8
S002	P.80B-4	S028	P.80B-6	S052	P.80B-7	S077	P.80B-8
S003	P.80B-4	S029	P.80B-6	S053	P.80B-7	S078	P.80B-9
S004	P.80B-4	S030	P.80B-6	S054	P.80B-7	S079	P.80B-9
S005	P.80B-4	S031	P.80B-6	S056	P.80B-7	S083	P.80B-10
S006	P.80B-4	S032	P.80B-6	S058	P.80B-7	S084	P.80B-10
S007	P.80B-4	S033	P.80B-6	S059	P.80B-7	S085	P.80B-10
S008	P.80B-4	S034	P.80B-6	S060	P.80B-7	S086	P.80B-10
S009	P.80B-4	S035	P.80B-6	S061	P.80B-6	S087	P.80B-10
S010	P.80B-4	S036	P.80B-6	S062	P.80B-6	S088	P.80B-7
S011	P.80B-4	S038	P.80B-6	S063	P.80B-7	S089	P.80B-7
S012	P.80B-4	S039	P.80B-7	S064	P.80B-6	S090	P.80B-8
S013	P.80B-4	S040	P.80B-7	S065	P.80B-6	S091	P.80B-10
S016	P.80B-5	S041	P.80B-7	S066	P.80B-6	S092	P.80B-6
S017	P.80B-5	S042	P.80B-7	S067	P.80B-6	S093	P.80B-6
S018	P.80B-5	S043	P.80B-7	S068	P.80B-8	S094	P.80B-7
S019	P.80B-5	S044	P.80B-7	S069	P.80B-8	S095	P.80B-6
S020	P.80B-5	S045	P.80B-7	S070	P.80B-8	S096	P.80B-7
S021	P.80B-5	S046	P.80B-7	S071	P.80B-8	S097	P.80B-7
S022	P.80B-5	S047	P.80B-7	S072	P.80B-8	S098	P.80B-7
S024	P.80B-6	S048	P.80B-7	S073	P.80B-8	S099	P.80B-6
S025	P.80B-6	S049	P.80B-7	S074	P.80B-8		
S026	P.80B-6	S050	P.80B-7	S075	P.80B-8		

ENGINE COMPARTMENT

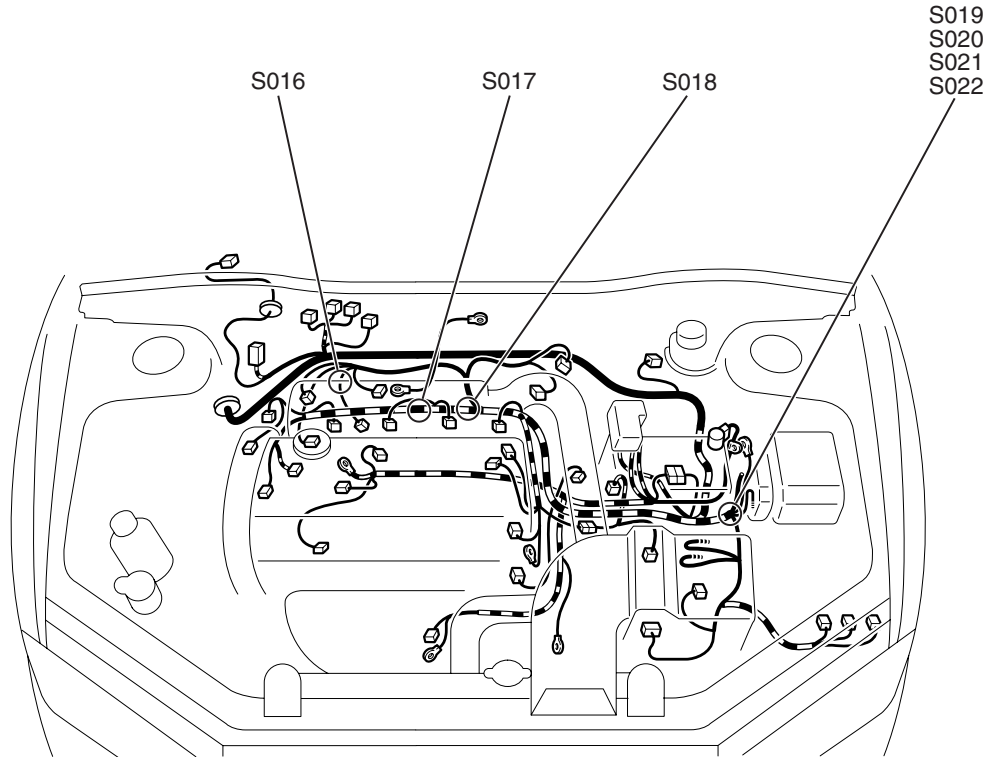
M1802000200785



AC503723AB

ENGINE AND TRANSAXLE

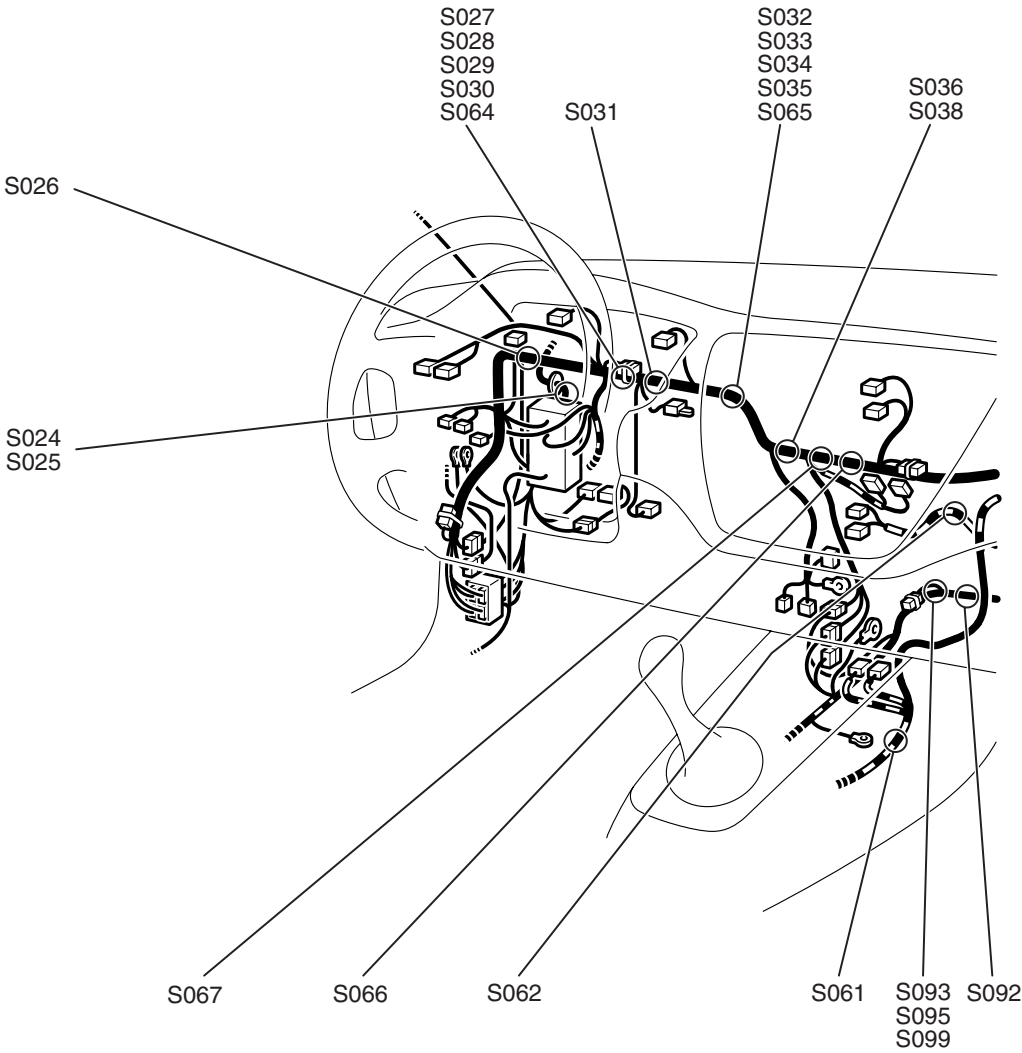
M1802001400685



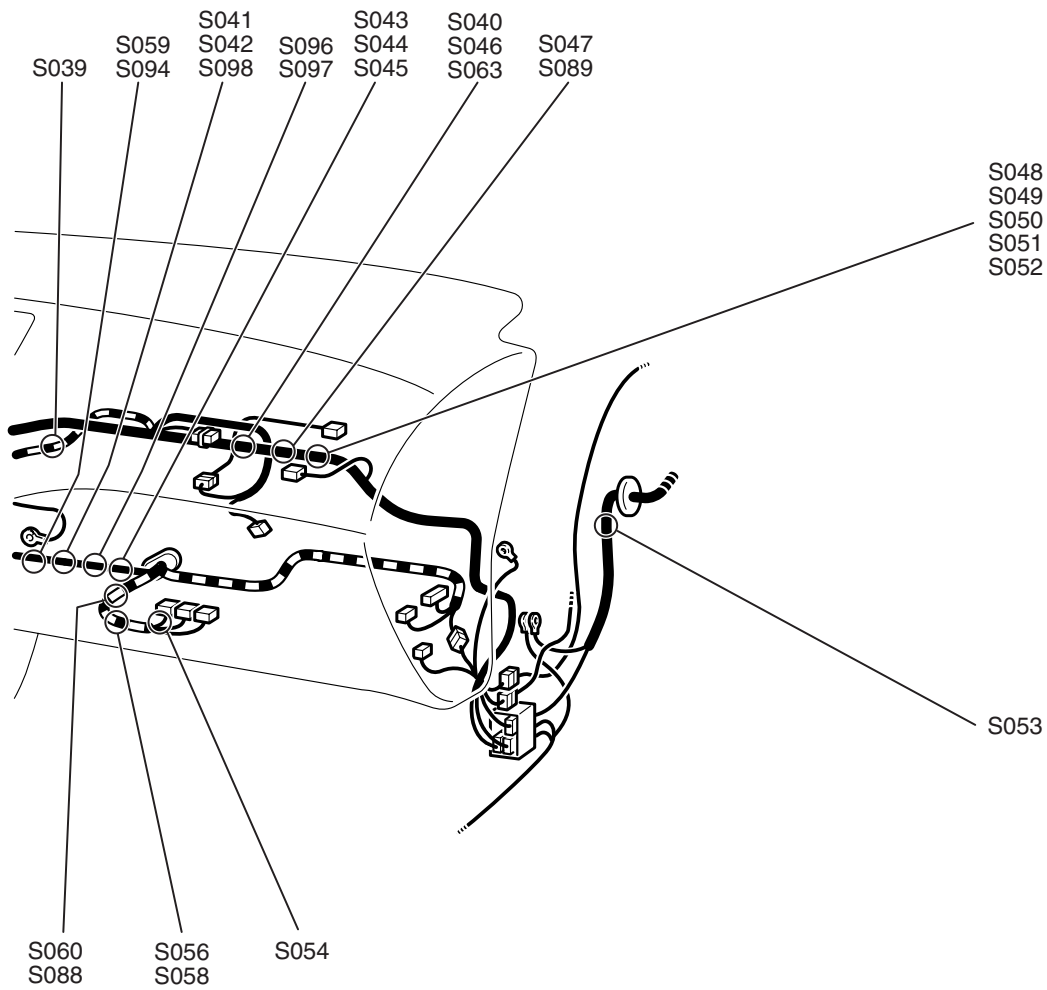
AC503724AB

DASH PANEL

M1802000301031



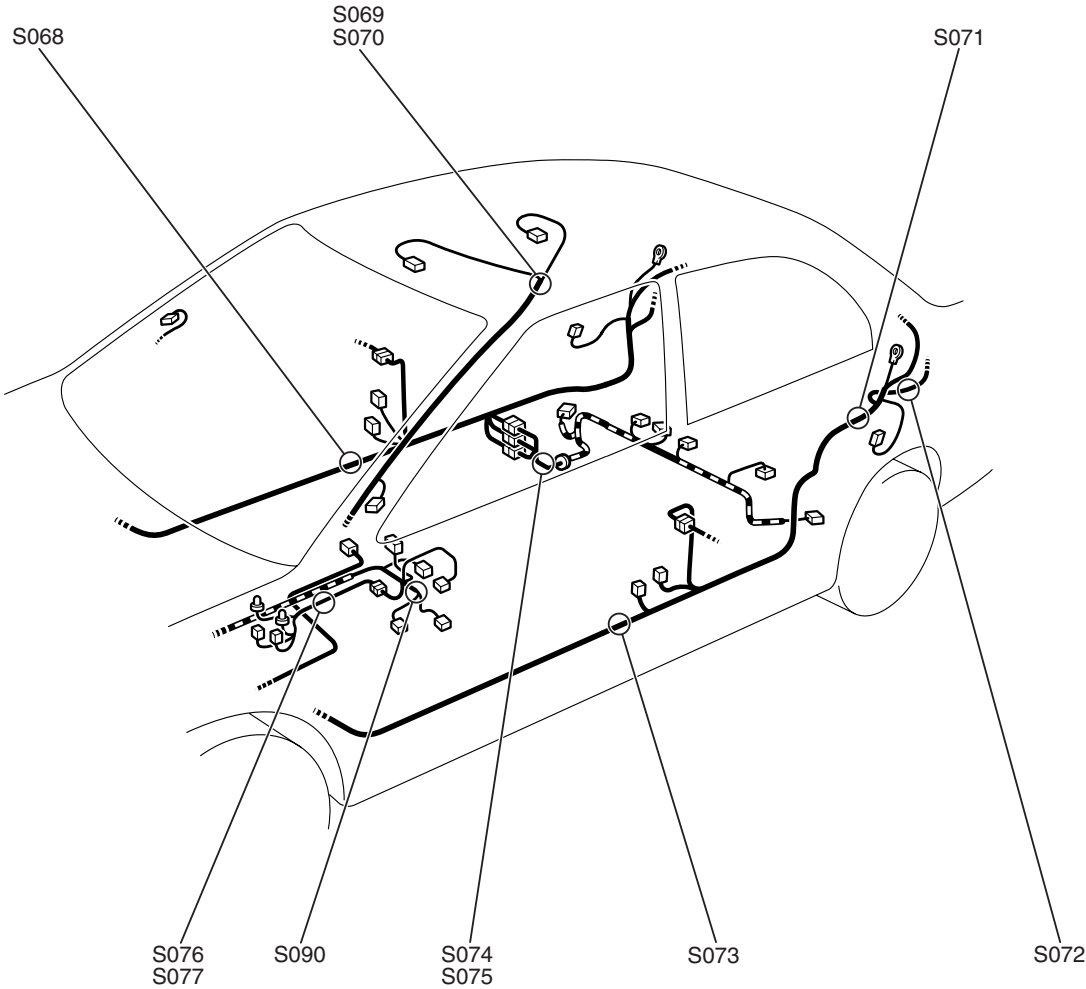
AC502791AD



AC502792 AD

FLOOR AND ROOF

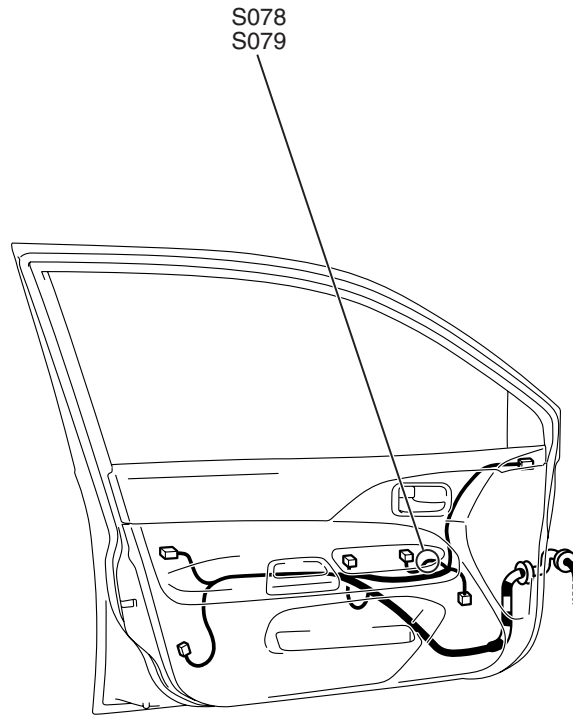
M1802001200692



AC401830AB

DOOR

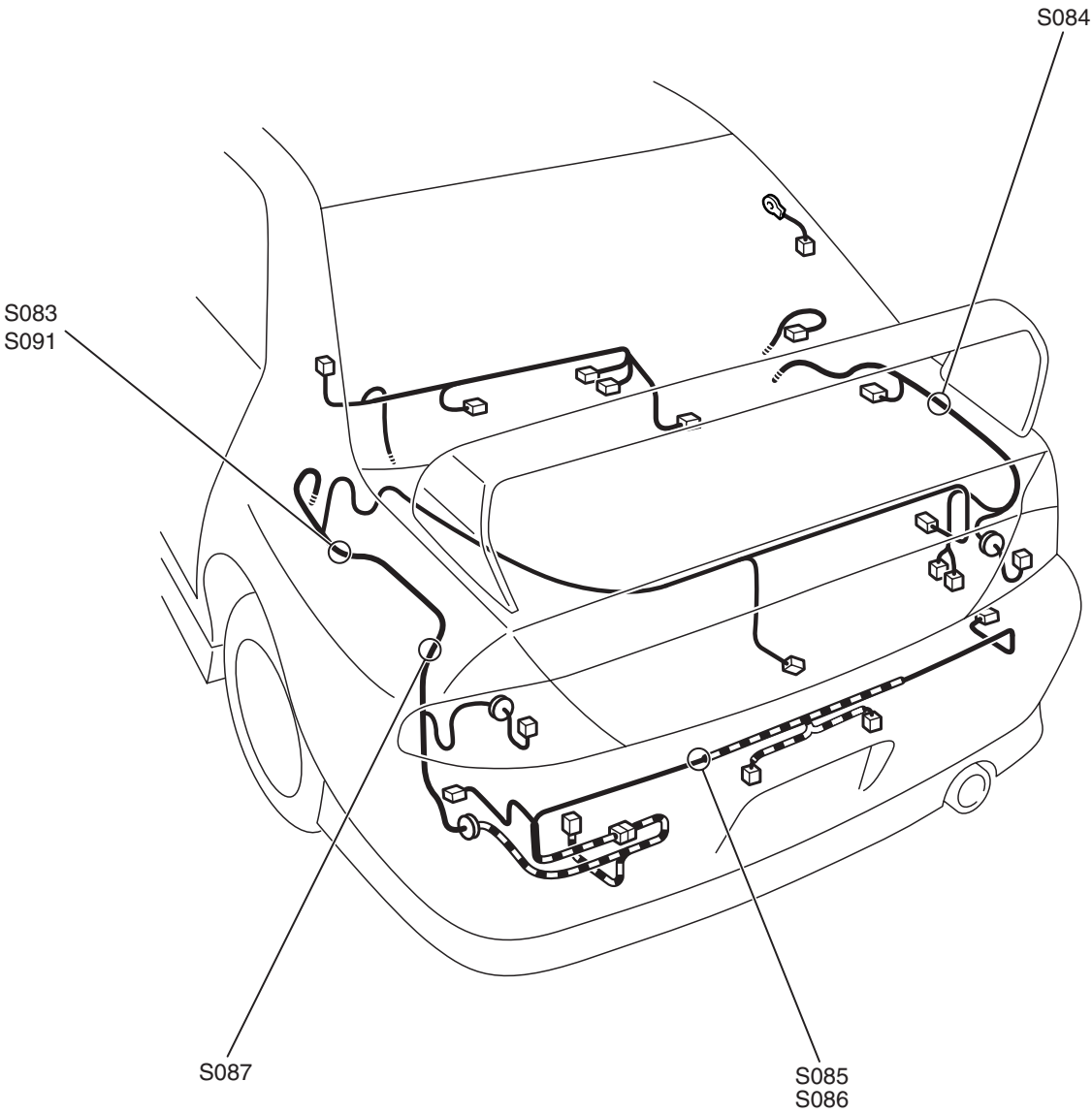
<FRONT DOOR (DRIVER'S SIDE)>



AC310593AB

LUGGAGE COMPARTMENT

M1802001500187



AC310610AB