

# GROUP 52A

# INTERIOR

## CONTENTS

|   |               |                                      |               |
|---|---------------|--------------------------------------|---------------|
| <b>GENERAL DESCRIPTION</b> .....        | <b>52A-2</b>  | <b>HEADLINING</b> .....              | <b>52A-18</b> |
| <b>SEAT BELT WARNING SYSTEM</b>         |               | REMOVAL AND INSTALLATION .....       | 52A-18        |
| <b>DIAGNOSIS</b> .....                  | <b>52A-2</b>  | <b>INSIDE REAR VIEW MIRROR</b> ..... | <b>52A-19</b> |
| <b>SPECIAL TOOL</b> .....               | <b>52A-2</b>  | <b>FRONT SEAT ASSEMBLY</b> .....     | <b>52A-20</b> |
| <b>INSTRUMENT PANEL ASSEMBLY*</b> ..... | <b>52A-3</b>  | REMOVAL AND INSTALLATION .....       | 52A-20        |
| REMOVAL AND INSTALLATION .....          | 52A-3         | DISASSEMBLY AND ASSEMBLY .....       | 52A-21        |
| DISASSEMBLY AND ASSEMBLY .....          | 52A-6         | <b>REAR SEAT ASSEMBLY</b> .....      | <b>52A-22</b> |
| <b>FRONT FLOOR CONSOLE</b>              |               | REMOVAL AND INSTALLATION .....       | 52A-22        |
| <b>ASSEMBLY</b> .....                   | <b>52A-7</b>  | DISASSEMBLY AND ASSEMBLY .....       | 52A-24        |
| REMOVAL AND INSTALLATION .....          | 52A-7         | <b>FRONT SEAT BELT*</b> .....        | <b>52A-26</b> |
| <b>REAR FLOOR CONSOLE</b>               |               | REMOVAL AND INSTALLATION .....       | 52A-26        |
| <b>ASSEMBLY</b> .....                   | <b>52A-8</b>  | INSPECTION .....                     | 52A-27        |
| REMOVAL AND INSTALLATION .....          | 52A-8         | <b>REAR SEAT BELT</b> .....          | <b>52A-27</b> |
| DISASSEMBLY AND ASSEMBLY .....          | 52A-9         | REMOVAL AND INSTALLATION .....       | 52A-27        |
| <b>TRIMS</b> .....                      | <b>52A-11</b> | <b>SPECIFICATIONS</b> .....          | <b>52A-28</b> |
| REMOVAL AND INSTALLATION .....          | 52A-11        | FASTENER TIGHTENING                  |               |
| <b>DOOR TRIM</b> .....                  | <b>52A-13</b> | SPECIFICATION .....                  | 52A-28        |
| REMOVAL AND INSTALLATION .....          | 52A-13        |                                      |               |

### **WARNING**

**Battery posts, terminals and related accessories contain lead and lead compounds. WASH HANDS AFTER HANDLING.**

### WARNINGS REGARDING SERVICING OF SUPPLEMENTAL RESTRAINT SYSTEM (SRS) EQUIPPED VEHICLES

### **WARNING**

- *Improper service or maintenance of any component of the SRS, or any SRS-related component, can lead to personal injury or death to service personnel (from inadvertent firing of the air bag) or to the driver and passenger (from rendering the SRS inoperative).*
- *Service or maintenance of any SRS component or SRS-related component must be performed only at an authorized MITSUBISHI dealer.*
- *MITSUBISHI dealer personnel must thoroughly review this manual, and especially its GROUP 52B - Supplemental Restraint System (SRS) before beginning any service or maintenance of any component of the SRS or any SRS-related component.*

#### NOTE

The SRS includes the following components: SRS air bag control unit, SRS warning light, front impact sensors, air bag module, clock spring, and interconnecting wiring. Other SRS-related components (that may have to be removed/installed in connection with SRS service or maintenance) are indicated in the table of contents by an asterisk (\*).

GENERAL DESCRIPTION

M1521000100151

SEAT BELT WARNING SYSTEM

- When the ignition switch is turned "ON" without fastening the seat belts (seat belt switch OFF), the tone alarm will sound for approximately 6 seconds to warn the driver to fasten the seat belts. When the seat belts are fastened, the tone alarm will stop sounding.
- When the ignition switch is turned "ON" without fastening the seat belt, the seat belt warning light comes on to warn the driver to fasten the seat belt.

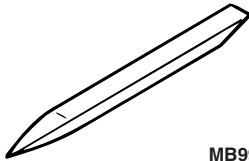
SEAT BELT WARNING SYSTEM DIAGNOSIS

M1523000700126

The seat belt warning system is controlled by Simplified Warning System (SWS). For troubleshooting, refer to GROUP 54B, SWS Diagnosis [P.54B-9](#).

SPECIAL TOOL

M1521000600242


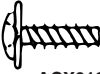


| TOOL  | TOOL NUMBER AND NAME         | SUPERSESSION         | APPLICATION                   |
|---|------------------------------|----------------------|-------------------------------|
| <br>MB990784 | MB990784<br>Ornament remover | General service tool | Removal of switch, trim, etc. |

## INSTRUMENT PANEL ASSEMBLY

### REMOVAL AND INSTALLATION

M1521001701137

The following bolts and screws are used for installing the instrument panel. Bolts and screws are indicated as marks shown in the illustration in the sections of "Removal and Installation" and "Disassembly and Assembly."

| NAME             | SYMBOL | SIZE (D × L) mm | COLOR | SHAPE   |
|------------------|--------|-----------------|-------|---|
| Tapping screw    | a      | 5 × 16          | Black | <br>ACX01282 |
|                  | b      | 5 × 16          | -     |   |
|                  | c      | 5 × 12          | -     | <br>ACX01283 |
| Bolt with washer | d      | 6 × 12          | -     | <br>ACX02229 |
|                  | e      | 5 × 20          | -     | <br>AC005505 |

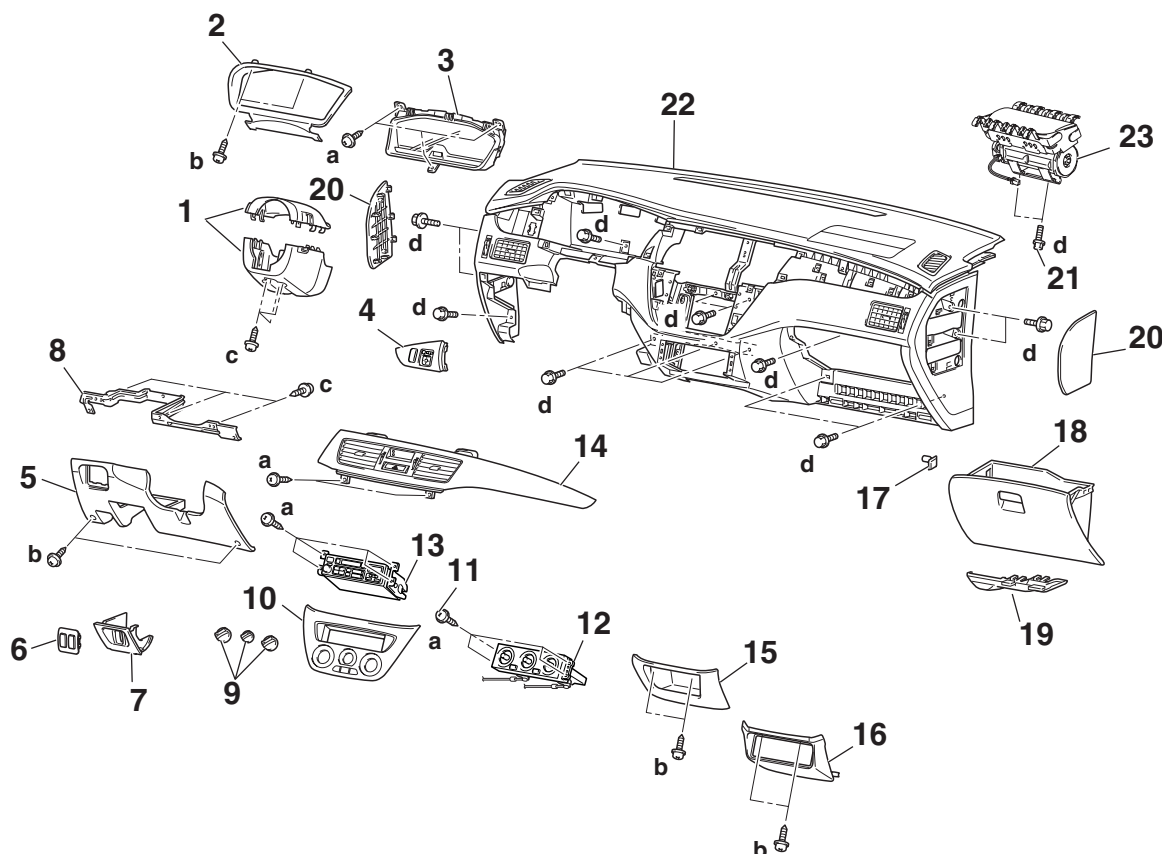
D: Thread diameter L: Effective thread length

**CAUTION**

- Refer to GROUP 52B, SRS Service Precautions [P.52B-16](#) and Air bag Module and Clock Spring [P.52B-168](#) before removing the passenger side air bag module.
- Do not subject the SRS-ECU to any shocks when removing or installing the instrument panel.

**Pre-removal and Post-installation Operation**

- Removal and Installation of Front Pillar Trim (Refer to [P.52A-11](#).)
- Removal and Installation of Hood Opener Lever (Refer to GROUP42, Hood [P.42-7](#).)



AC401995 AC

**REMOVAL STEPS**

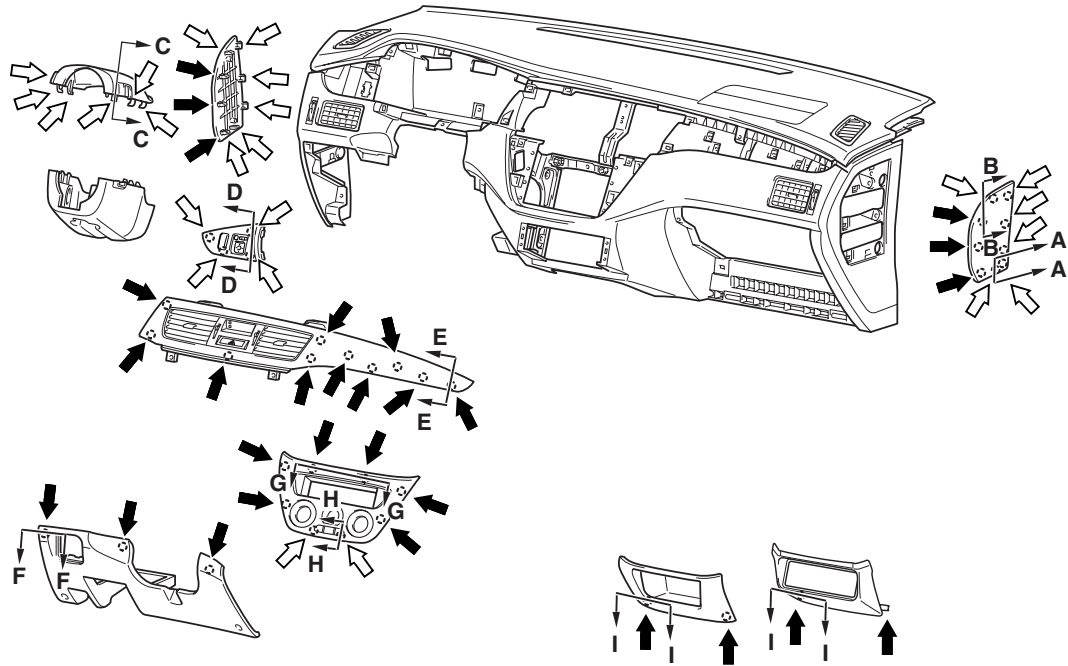
1. COLUMN COVER
2. METER BEZEL
3. COMBINATION METER
4. INSTRUMENT PANEL ORNAMENT
5. UNDER COVER
6. SWITCH PANEL
7. SWITCH HOLDER
8. LOWER FRAME
9. HEATER CONTROL KNOB
10. CENTER PANEL
11. HEATER CONTROL ASSEMBLY MOUNTING SCREW
12. HEATER CONTROL ASSEMBLY
13. RADIO AND TAPE PLAYER
14. CENTER AIR OUTLET PANEL
15. CENTER LOWER CASE (VEHICLES WITHOUT CD AUTO CHANGER)

&lt;&lt;A&gt;&gt;

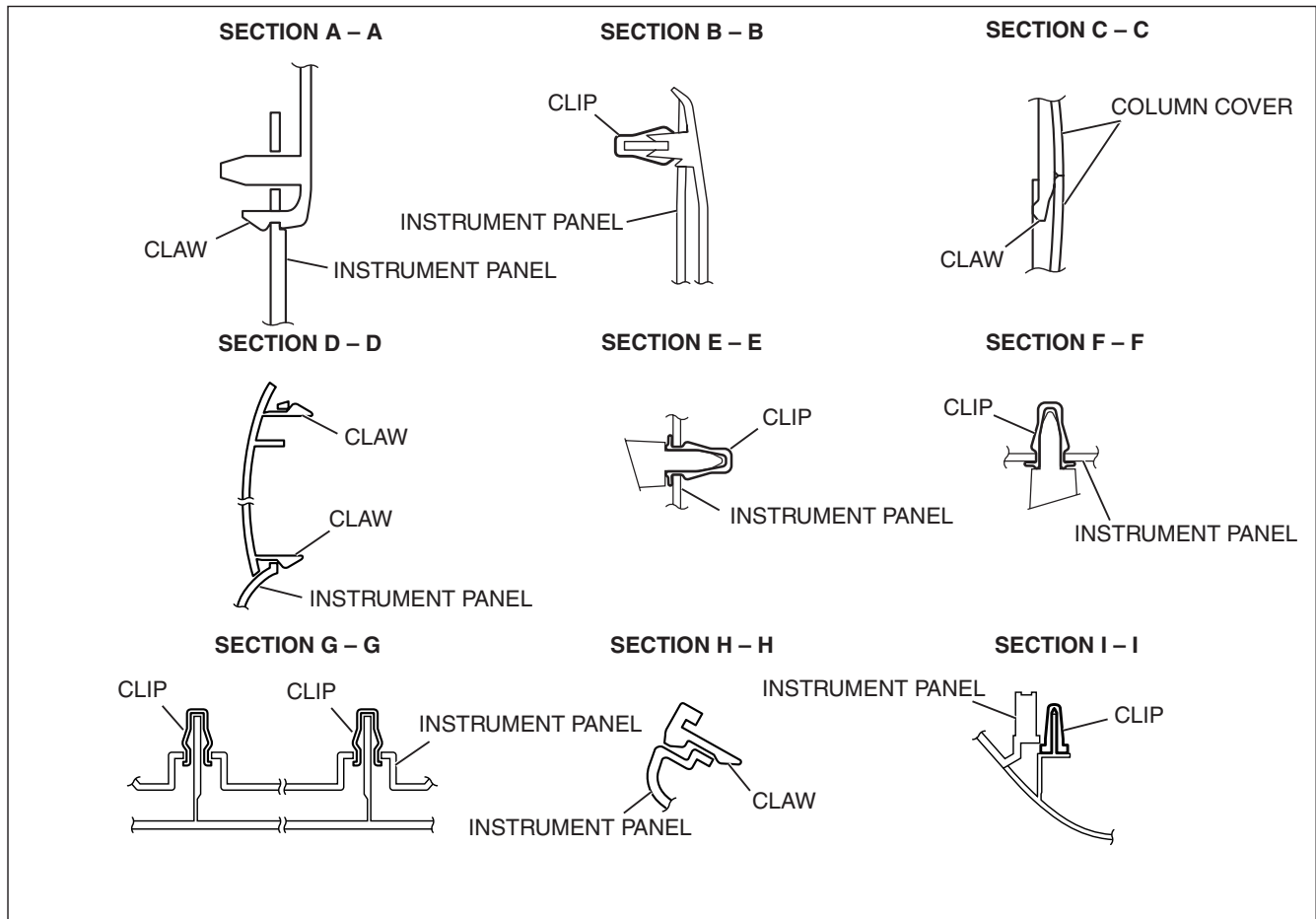
**REMOVAL STEPS (Continued)**

16. CENTER LOWER PANEL (VEHICLE WITH CD AUTO CHANGER)
17. STOPPER
18. GLOVE BOX
19. HARNESS COVER
20. INSTRUMENT PANEL SIDE COVER
21. PASSENGER'S (FRONT) AIR BAG MODULE MOUNTING BOLT
  - STEERING COLUMN SHAFT MOUNTING BOLT (REFER TO GROUP 37, STEERING COLUMN SHAFT [P.37-26](#).)
22. INSTRUMENT PANEL ASSEMBLY
23. PASSENGER'S (FRONT) AIR BAG MODULE

# CLIP AND CLAW POSITION



NOTE  
(1) : CLIP POSITIONS  
(2) : CLAW POSITIONS



AC504730AB

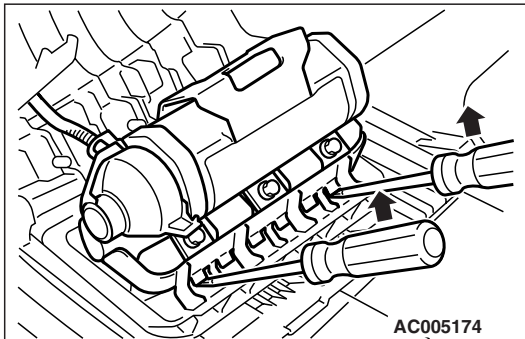
## REMOVAL SERVICE POINT

## &lt;&lt;A&gt;&gt; PASSENGER'S (FRONT) AIR BAG MODULE REMOVAL

**⚠ CAUTION**

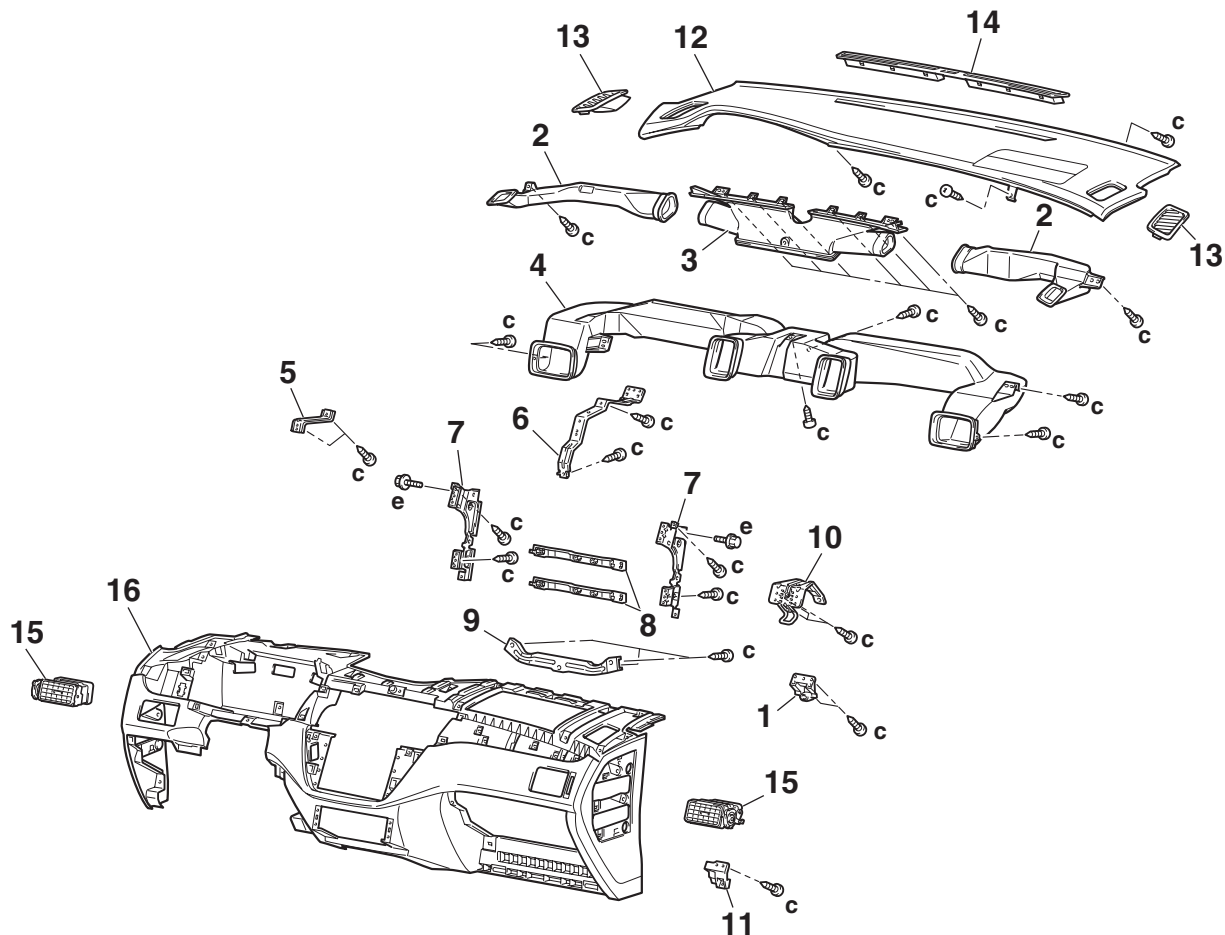
- Do not damage the claws of the hinge when removing the passenger's (front) air bag module.
- Store the removed passenger's (front) air bag module with the deployed side facing upward, in a clean and dry place.

Insert the flat-tipped screwdriver into the position shown in the illustration and pull up the screwdriver to disengage the claws for removal of the passenger's (front) air bag module.



## DISASSEMBLY AND ASSEMBLY

M1521001900279



AC005175AB

**DISASSEMBLY STEPS**

1. INSTRUMENT PANEL UPPER SUPPORT
2. SIDE DEFROSTER DUCT
3. CENTER DEFROSTER DUCT
4. DISTRIBUTION DUCT
5. DRIVER SIDE UPPER BRACKET
6. CENTER UPPER REINFORCEMENT
7. INSTRUMENT PANEL CENTER REINFORCEMENT
8. BRIDGE REINFORCEMENT

**DISASSEMBLY STEPS (Continued)**

9. CENTER LOWER REINFORCEMENT
10. GLOVE BOX STRIKER
11. GLOVE BOX COVER
12. INSTRUMENT PANEL PAD
13. SIDE DEMISTER
14. DEFROSTER GARNISH
15. SIDE AIR OUTLET ASSEMBLY
16. INSTRUMENT PANEL

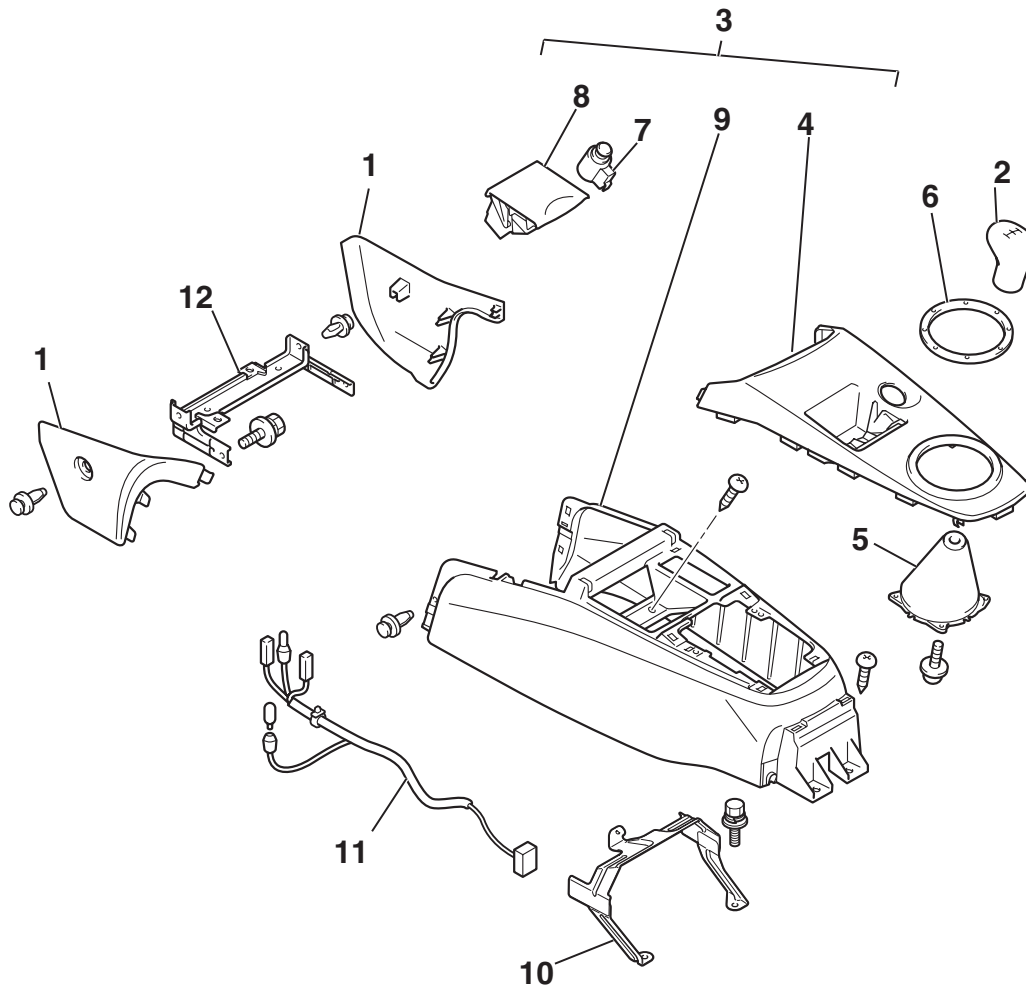
## FRONT FLOOR CONSOLE ASSEMBLY

### REMOVAL AND INSTALLATION

M1521005200090

**Pre-removal and Post-installation Operation**

- Removal and Installation of Rear Floor Console (Refer to [P.52A-8.](#))



AC401989AB

**REMOVAL STEPS**

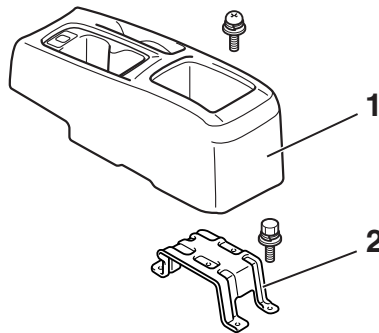
1. CONSOLE SIDE COVER
2. SHIFT LEVER KNOB
3. FRONT FLOOR CONSOLE ASSEMBLY
4. FRONT FLOOR CONSOLE PANEL
5. M/T SHIFT LEVER COVER
6. SHIFT LEVER PANEL GARNISH
7. CIGARETTE LIGHTER

**REMOVAL STEPS (Continued)**

8. ASHTRAY
9. FRONT FLOOR CONSOLE
10. FRONT FLOOR CONSOLE BRACKET
11. HARNESS
12. CONSOLE SIDE COVER BRACKET

**REAR FLOOR CONSOLE ASSEMBLY****REMOVAL AND INSTALLATION**

M1521005700095



AC310299AB

**REMOVAL STEPS**

1. REAR CONSOLE ASSEMBLY
  - REAR SEAT CUSHION ASSEMBLY (REFER TO [P.52A-22.](#))
  - FRONT SCUFF PLATE (REFER TO [P.52A-11.](#))

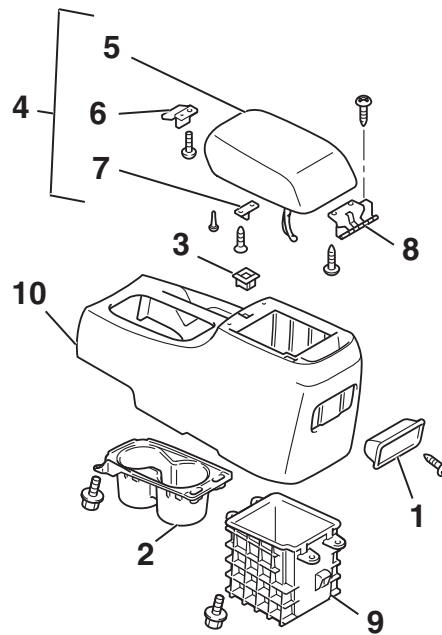
**REMOVAL STEPS (Continued)**

- REAR SCUFF PLATE (REFER TO [P.52A-11.](#))
  - LOWER CENTER PILLAR TRIM (REFER TO [P.52A-11.](#))
  - FLOOR CARPET
2. REAR CONSOLE BRACKET



DISASSEMBLY AND ASSEMBLY

M1521005900130



AC401988AB

**DISASSEMBLY STEPS**

1. ASHTRAY
2. CUP HOLDER
3. HOLE LOCK
4. CONSOLE LID ASSEMBLY
5. CONSOLE LID
6. UPPER LID LOCK
7. LOWER LID STRIKER

**DISASSEMBLY STEPS**

8. HINGE BRACKET
9. BOX
10. REAR FLOOR CONSOLE

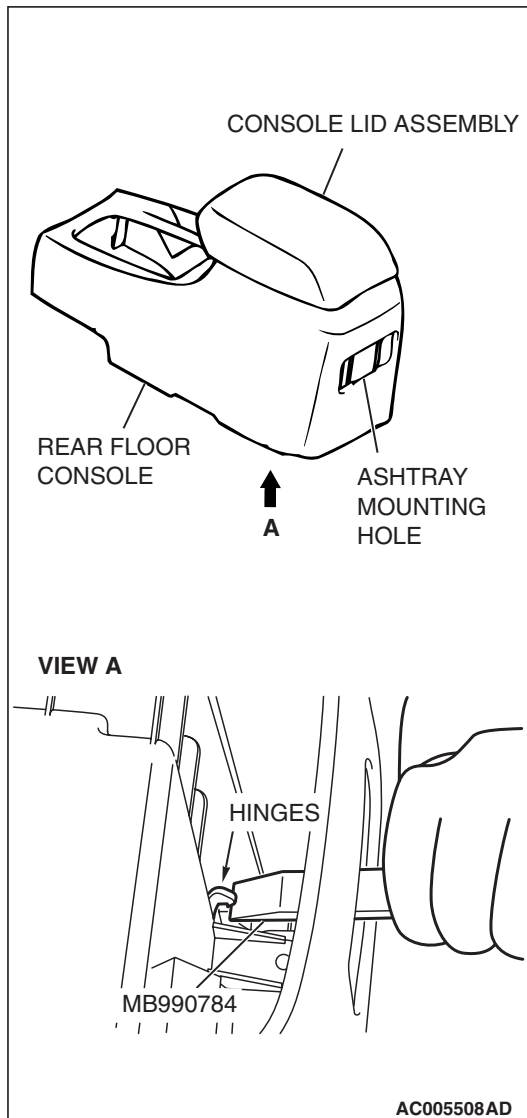
**Required Special Tool:**

- MB990784: Ornament Remover

<<A>>

**DISASSEMBLY SERVICE POINT****<<A>> CONSOLE LID ASSEMBLY REMOVAL**

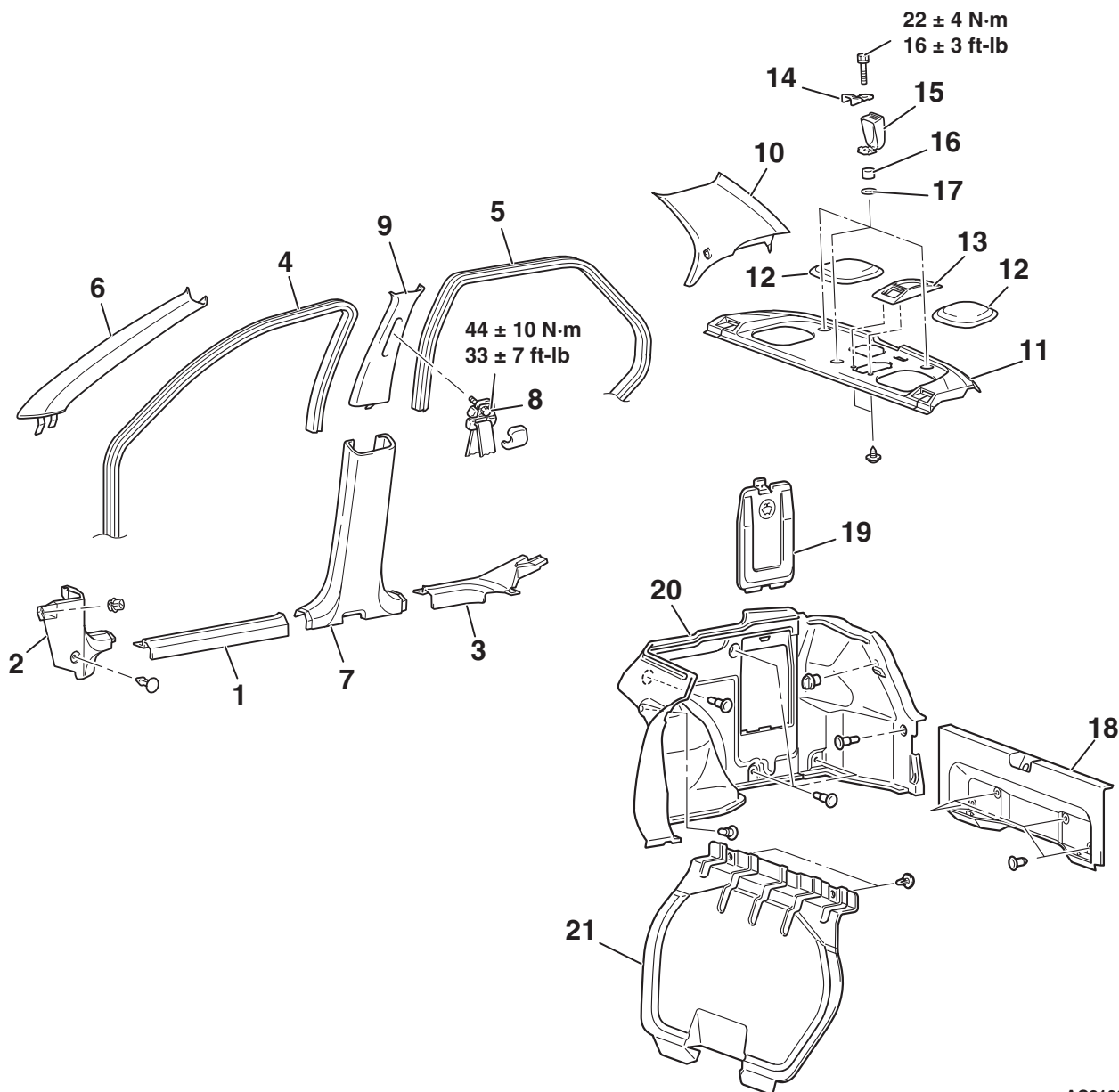
Insert the special tool MB990784 into the hinges of the console lid assembly and the rear floor console through the ashtray mounting hole to pry for removal.



# TRIMS

## REMOVAL AND INSTALLATION

M1521001100596

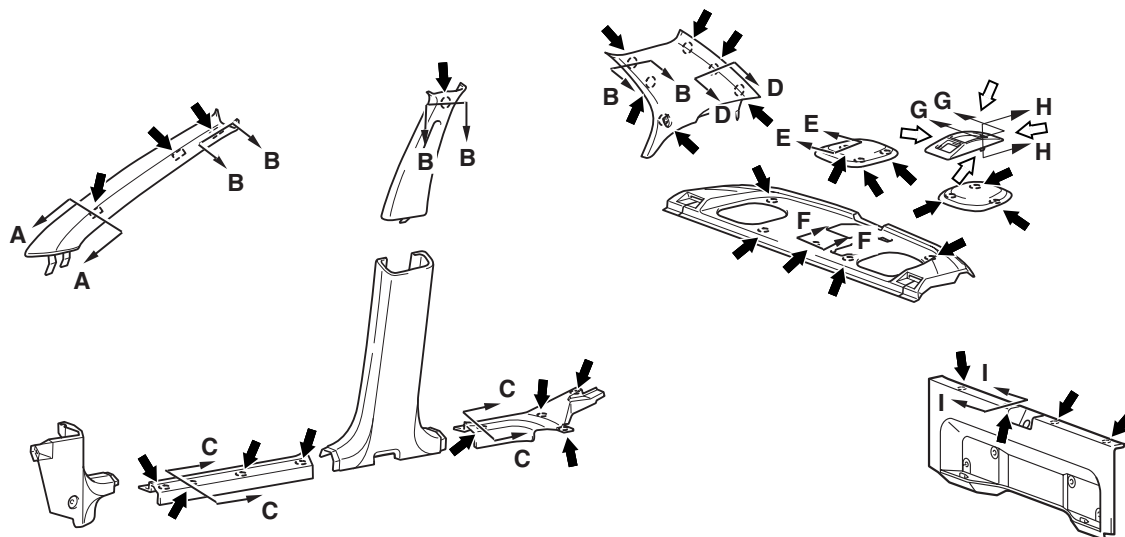


AC210040AB

<<A>>

- |                                  |                              |
|----------------------------------|------------------------------|
| 1. FRONT SCUFF PLATE             | 11. REAR SHELF TRIM          |
| 2. COWL SIDE TRIM                | 12. SPEAKER GARNISH          |
| 3. REAR SCUFF PLATE              | 13. RETRACTOR COVER          |
| 4. FRONT DOOR OPENING TRIM       | 14. CHILD RESTRAINT FITTING  |
| 5. REAR DOOR OPENING TRIM        | 15. COVER                    |
| 6. FRONT PILLAR TRIM             | 16. SPACER (10 inch)         |
| 7. LOWER CENTER PILLAR TRIM      | 17. FIBER WASHER             |
| 8. FRONT SEAT BELT<br>CONNECTION | 18. REAR END TRIM            |
| 9. UPPER CENTER PILLAR TRIM      | 19. TRUNK ROOM SIDE TRIM LID |
| 10. REAR PILLAR TRIM             | 20. TRUNK ROOM SIDE TRIM     |
|                                  | 21. TRUNK ROOM FRONT TRIM    |

## CLIP POSITION

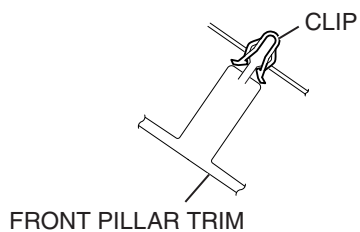


## NOTE

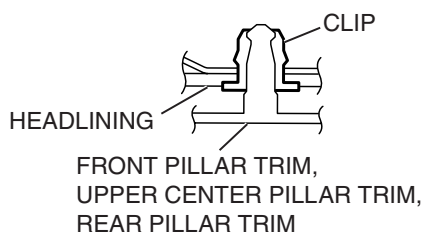
◄ : CLIP POSITIONS

◄◄ : CLAW POSITIONS

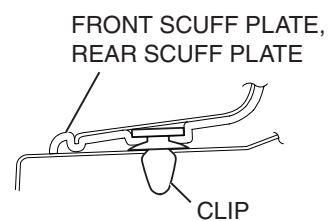
## SECTION A – A



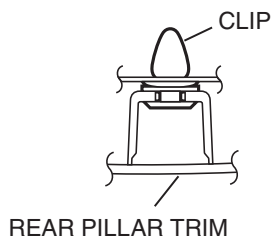
## SECTION B – B



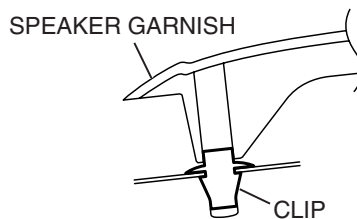
## SECTION C – C



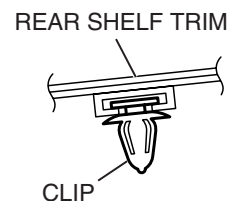
## SECTION D – D



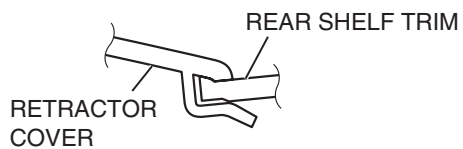
## SECTION E – E



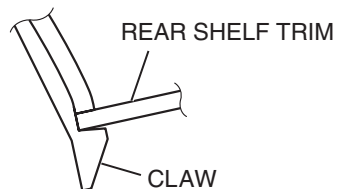
## SECTION F – F



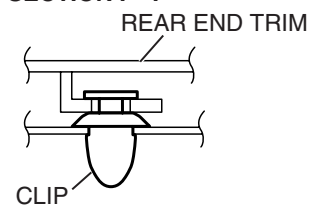
## SECTION G – G



## SECTION H – H



## SECTION I – I

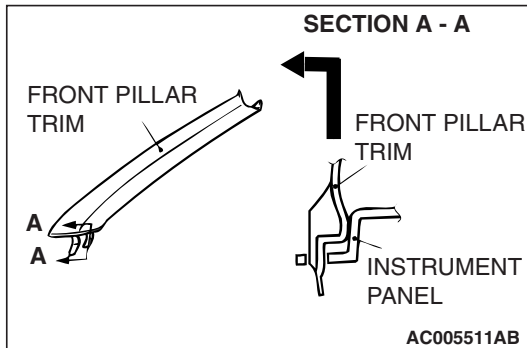


AC210049AB

## REMOVAL SERVICE POINT

### <<A>> FRONT PILLAR TRIM REMOVAL

Release the clip by pulling in the direction shown in the illustration and remove the front pillar trim.

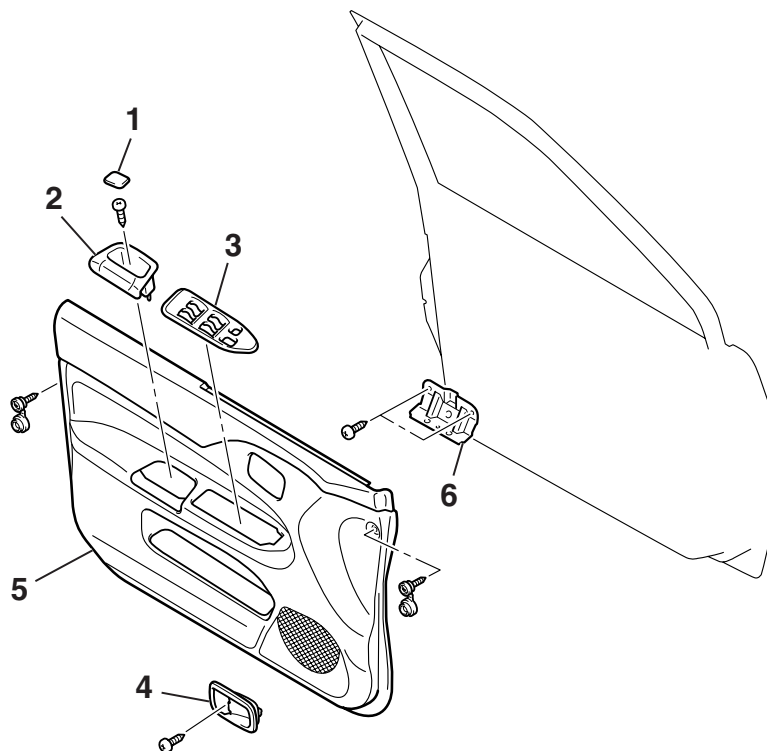


## DOOR TRIM

### REMOVAL AND INSTALLATION

M1521006400224

<FRONT DOOR TRIM>



AC210022AB

#### REMOVAL STEPS

1. CAP
2. PULL HANDLE BOX
3. POWER WINDOW SWITCH PANEL ASSEMBLY
4. DOOR INSIDE HANDLE COVER

#### REMOVAL STEPS (Continued)

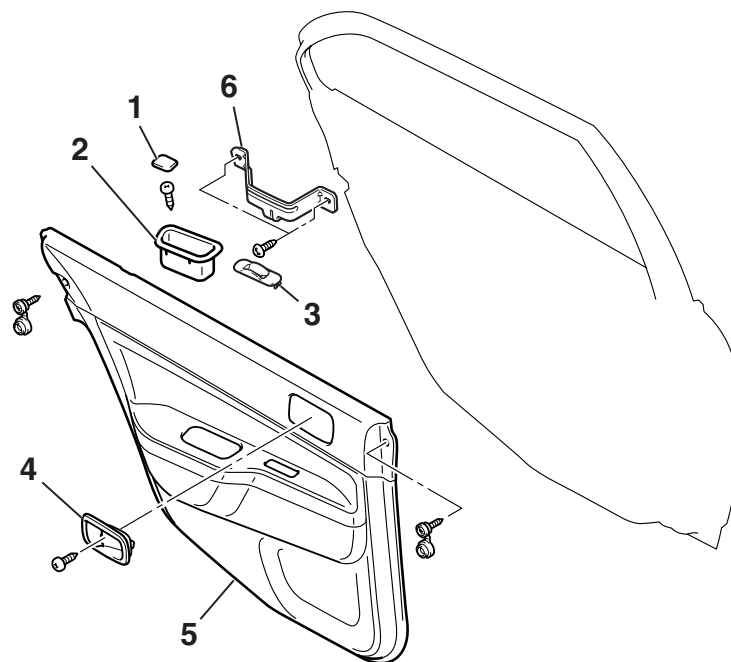
5. FRONT DOOR TRIM
6. FRONT DOOR PULL HANDLE BRACKET

#### Required Special Tool:

- MB990784: Ornament Remover

<<A>>

&lt;REAR DOOR TRIM&gt;



AC210019AB

**REMOVAL STEPS**

1. CAP
2. PULL HANDLE BOX
3. POWER WINDOW SWITCH  
PANEL ASSEMBLY
4. DOOR INSIDE HANDLE COVER

**REMOVAL STEPS (Continued)**

5. REAR DOOR TRIM
6. REAR DOOR PULL HANDLE  
BRACKET

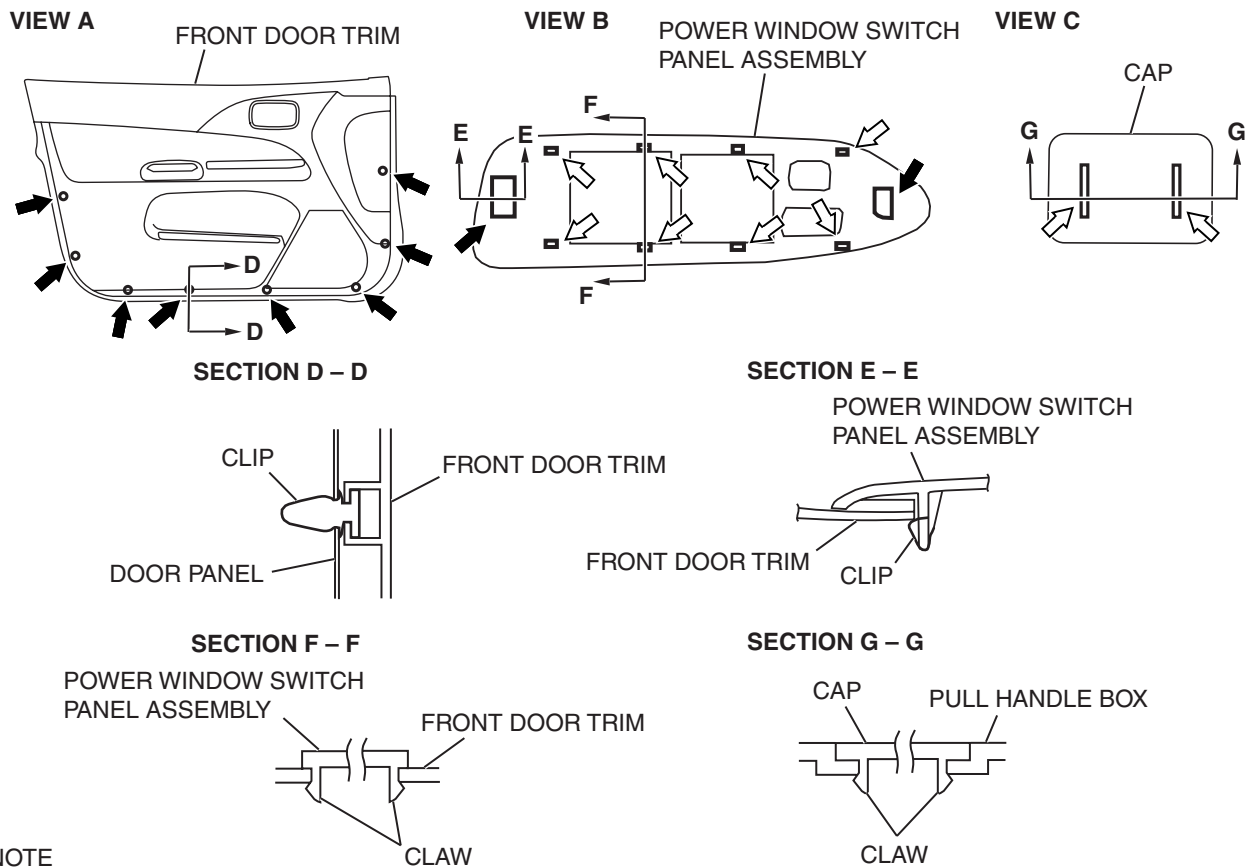
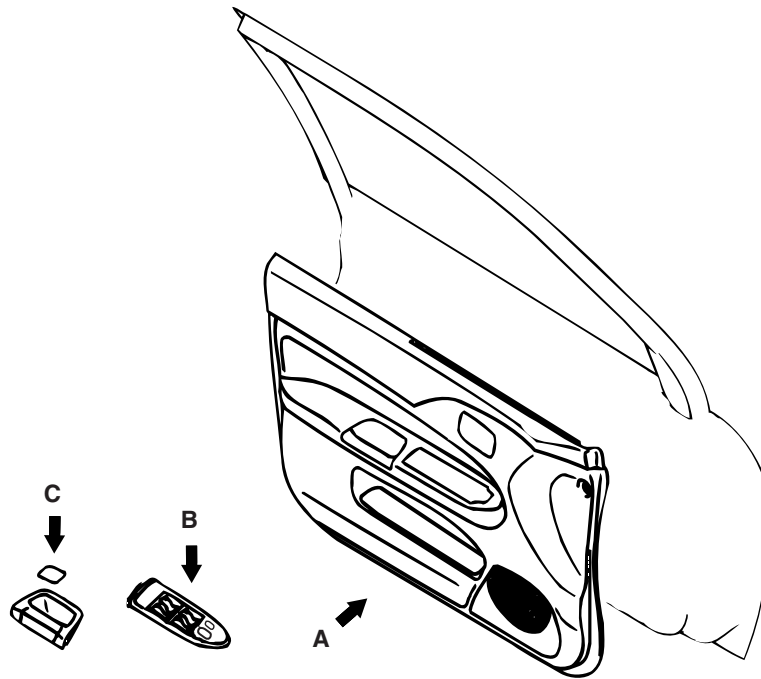
**Required Special Tool:**

- MB990784: Ornament Remover

&lt;&lt;A&gt;&gt;

## CLIP AND CLAW POSITIONS

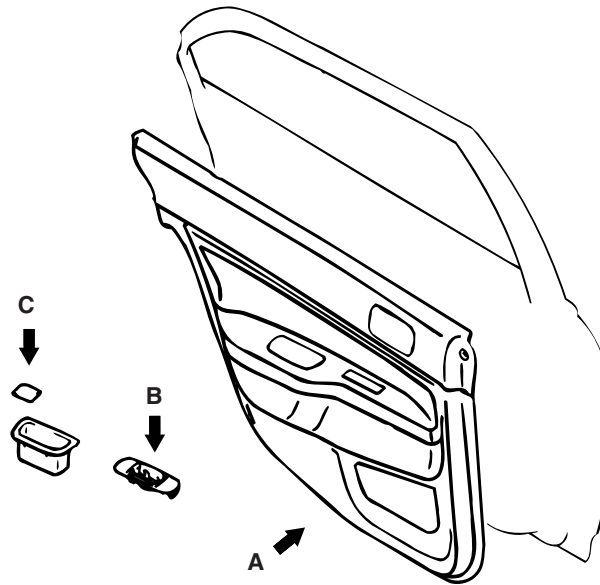
<FRONT DOOR TRIM>



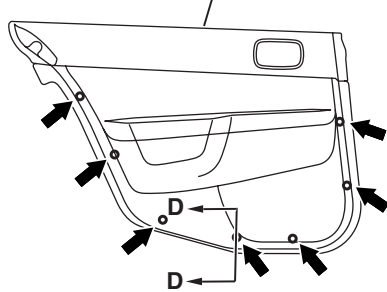
NOTE  
(1) : CLIP POSITIONS  
(2) : CLAW POSITIONS

AC210245AF

&lt;REAR DOOR TRIM&gt;

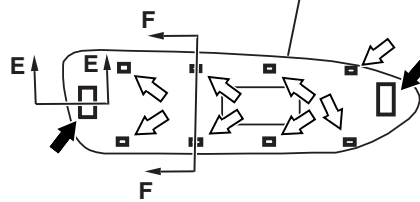


VIEW A

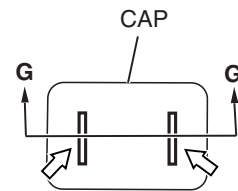


REAR DOOR TRIM

VIEW B

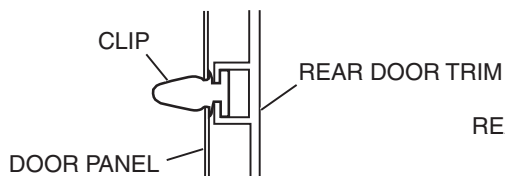
POWER WINDOW SWITCH  
PANEL ASSEMBLY

VIEW C



CAP

SECTION D - D

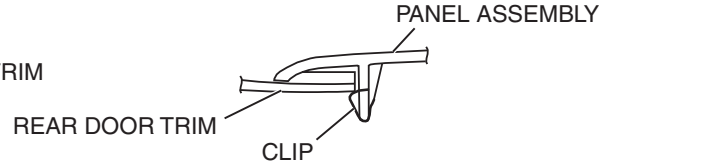


CLIP

REAR DOOR TRIM

DOOR PANEL

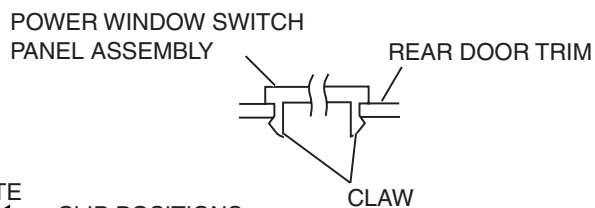
SECTION E - E

POWER WINDOW SWITCH  
PANEL ASSEMBLY

REAR DOOR TRIM

CLIP

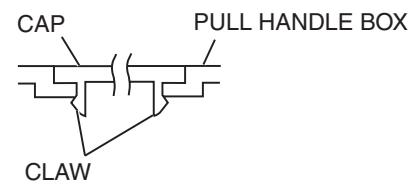
SECTION F - F

POWER WINDOW SWITCH  
PANEL ASSEMBLY

REAR DOOR TRIM

CLAW

SECTION G - G



CAP

PULL HANDLE BOX

CLAW

## NOTE

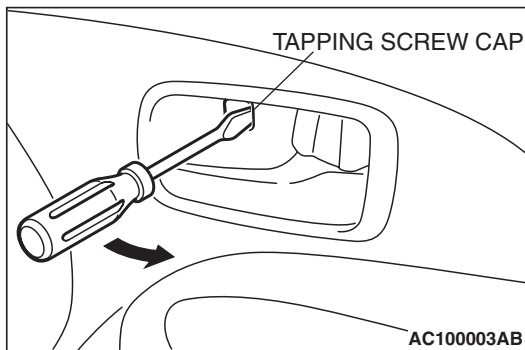
- (1) : CLIP POSITIONS  
 (2) : CLAW POSITIONS

AC211593AG

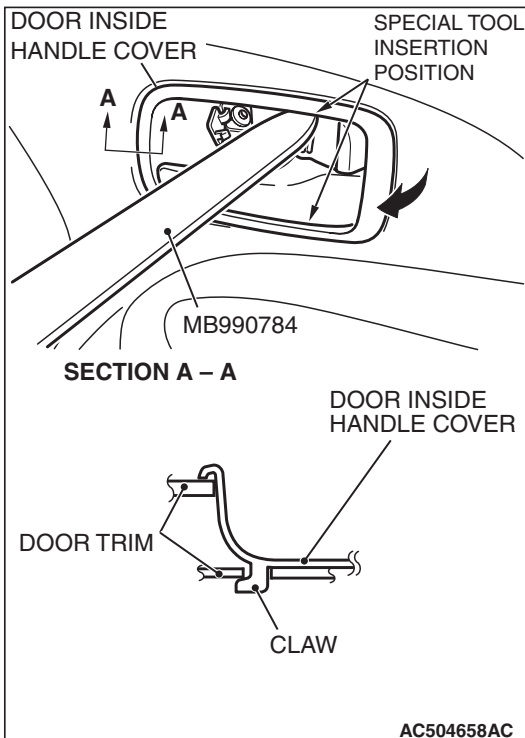


## REMOVAL SERVICE POINT

### <<A>> DOOR INSIDE HANDLE COVER REMOVAL



1. Insert a flat-tipped screwdriver into the rear end of the tapping screw cap on the door inside handle cover, and pry out the cap in the direction shown. Then remove the tapping screw.



2. Insert special tool MB990784 into the clearance between the door inside handle cover and the door inside handle, and disengage the claws of the door inside handle.
3. Insert special tool MB990784 into the rear end of the inside handle cover, and pry out the cover in the direction shown. Then remove the door inside handle cover.

## HEADLINING

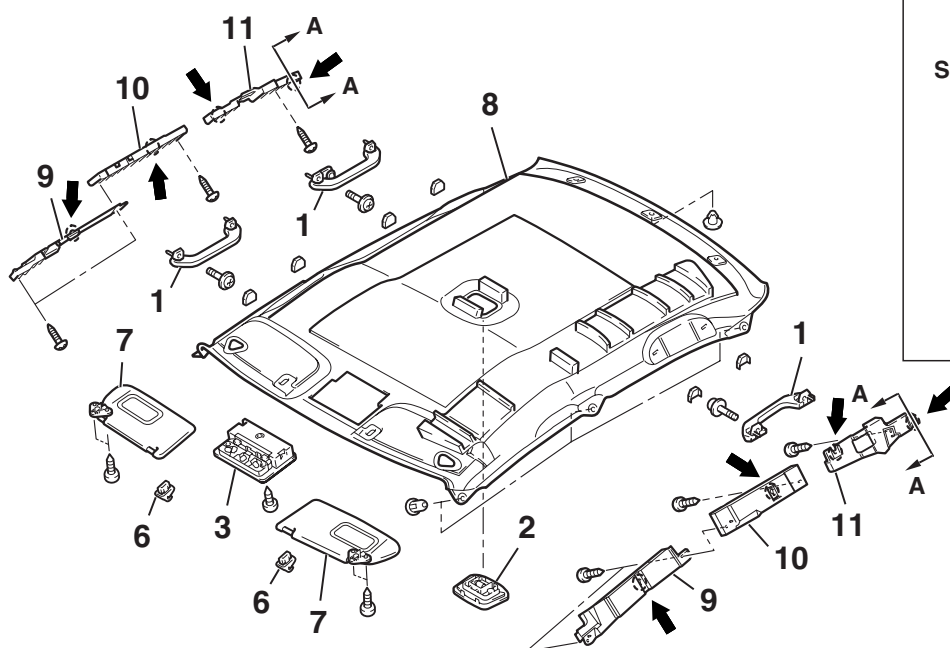
## REMOVAL AND INSTALLATION

M1521001400274

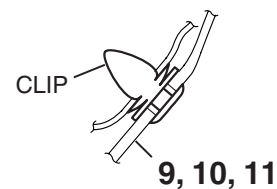
**Pre-removal and Post-installation Operation**

- Removal and Installation of Front Pillar Trim, Upper Center Pillar Trim, Rear Pillar Trim (Refer to [P.52A-11.](#))

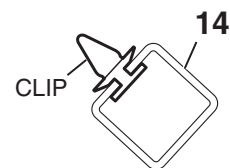
&lt;VEHICLE WITHOUT SUNROOF&gt;



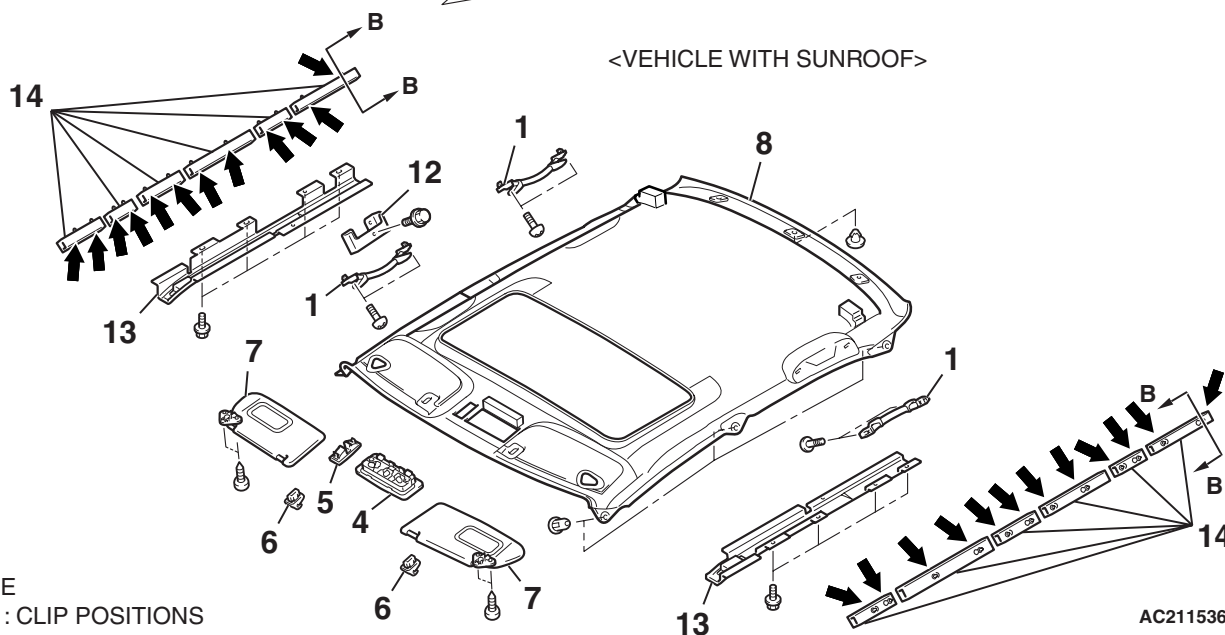
## SECTION A — A



## SECTION B — B



&lt;VEHICLE WITH SUNROOF&gt;



NOTE

← : CLIP POSITIONS

AC211536AC

### REMOVAL STEPS

1. ASSIST GRIP
2. REAR DOME LIGHT ASSEMBLY  
<VEHICLE WITHOUT SUNROOF>
3. FRONT DOME LIGHT WITH  
SUNGLASSES POCKET <VEHICLE  
WITHOUT SUNROOF>
4. FRONT DOME LIGHT <VEHICLE  
WITH SUNROOF>
5. SUNROOF SWITCH COVER  
<VEHICLE WITH SUNROOF>
6. SUN VISOR HOLDER
7. SUN VISOR ASSEMBLY
  - FRONT FLOOR CONSOLE  
ASSEMBLY (REFER TO [P.52A-7.](#))
8. HEADLINING

### REMOVAL STEPS (Continued)

9. SIDE ROOF BOX, FRONT  
<VEHICLE WITHOUT SUNROOF>
10. SIDE ROOF BOX, CENTER  
<VEHICLE WITHOUT SUNROOF>
11. SIDE ROOF BOX, REAR <VEHICLE  
WITHOUT SUNROOF>
12. ASSIST GRIP BRACKET <VEHICLE  
WITH SUNROOF>
13. ROOF ENERGY ABSORBER  
BRACKET <VEHICLE WITH  
SUNROOF>
14. ENERGY ABSORBER TUBE  
<VEHICLE WITH SUNROOF>

<<A>>

<<B>>

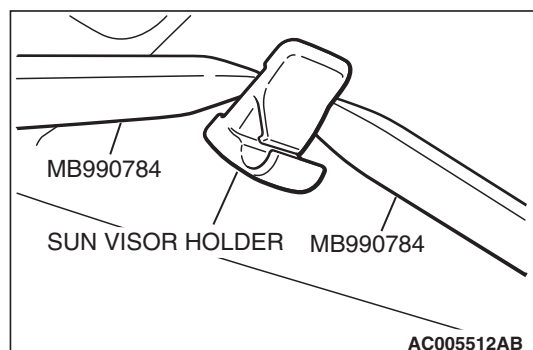
### Required Special Tool:

- MB990784: Ornament Remover

## REMOVAL SERVICE POINTS

### <<A>> SUN VISOR HOLDER REMOVAL

Insert special tool MB990784 into side claws of the sun visor holder through both sides of the sun visor holder, to remove the hinges.



### <<B>> HEADLINING REMOVAL

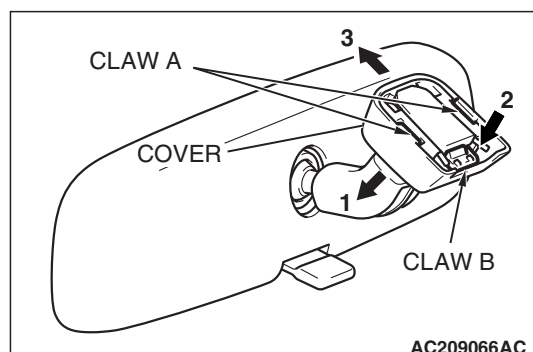
Bend the headlining to remove from the front passenger's door.

## INSIDE REAR VIEW MIRROR

M1521002600152

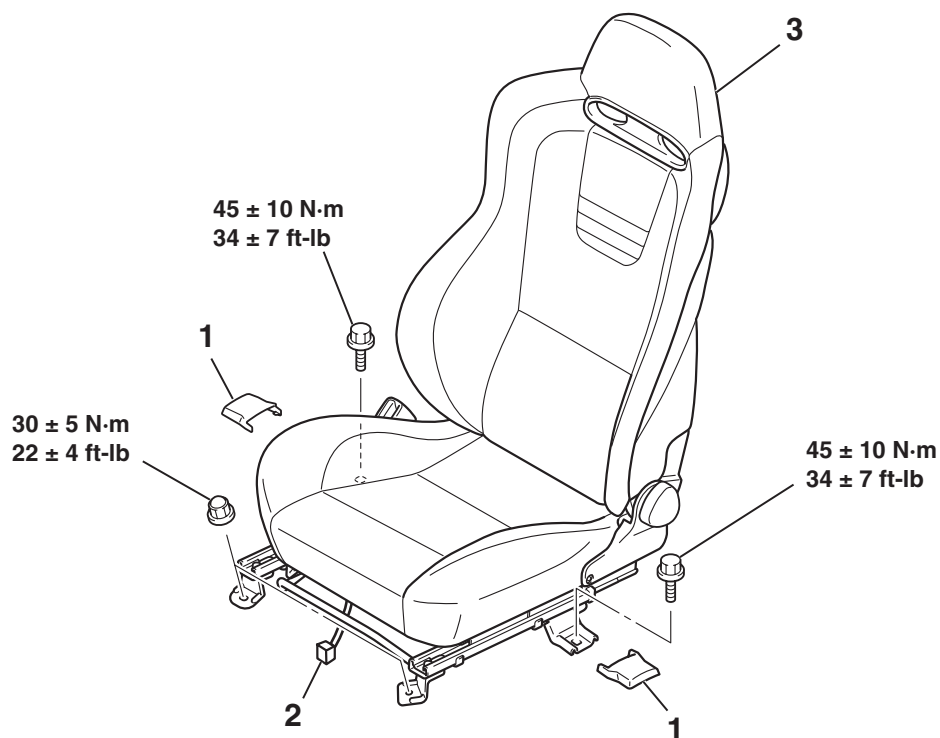
### REMOVAL SERVICE POINT

1. Disengage claw A and lower the cover in the arrow 1 direction.
2. Push claw B in the arrow 2 direction to unlock, and pull out the mirror in the arrow 3 direction.



**FRONT SEAT ASSEMBLY****REMOVAL AND INSTALLATION**

M1522001300281



AC210735AB

**REMOVAL STEPS**

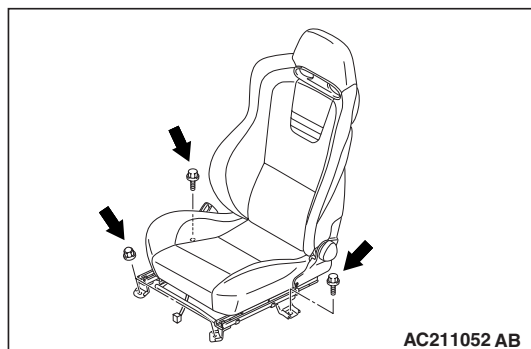
1. FRONT SEAT ANCHOR COVER

**REMOVAL STEPS (Continued)**

2. HARNESS CONNECTOR
  3. FRONT SEAT ASSEMBLY
- >>A<<

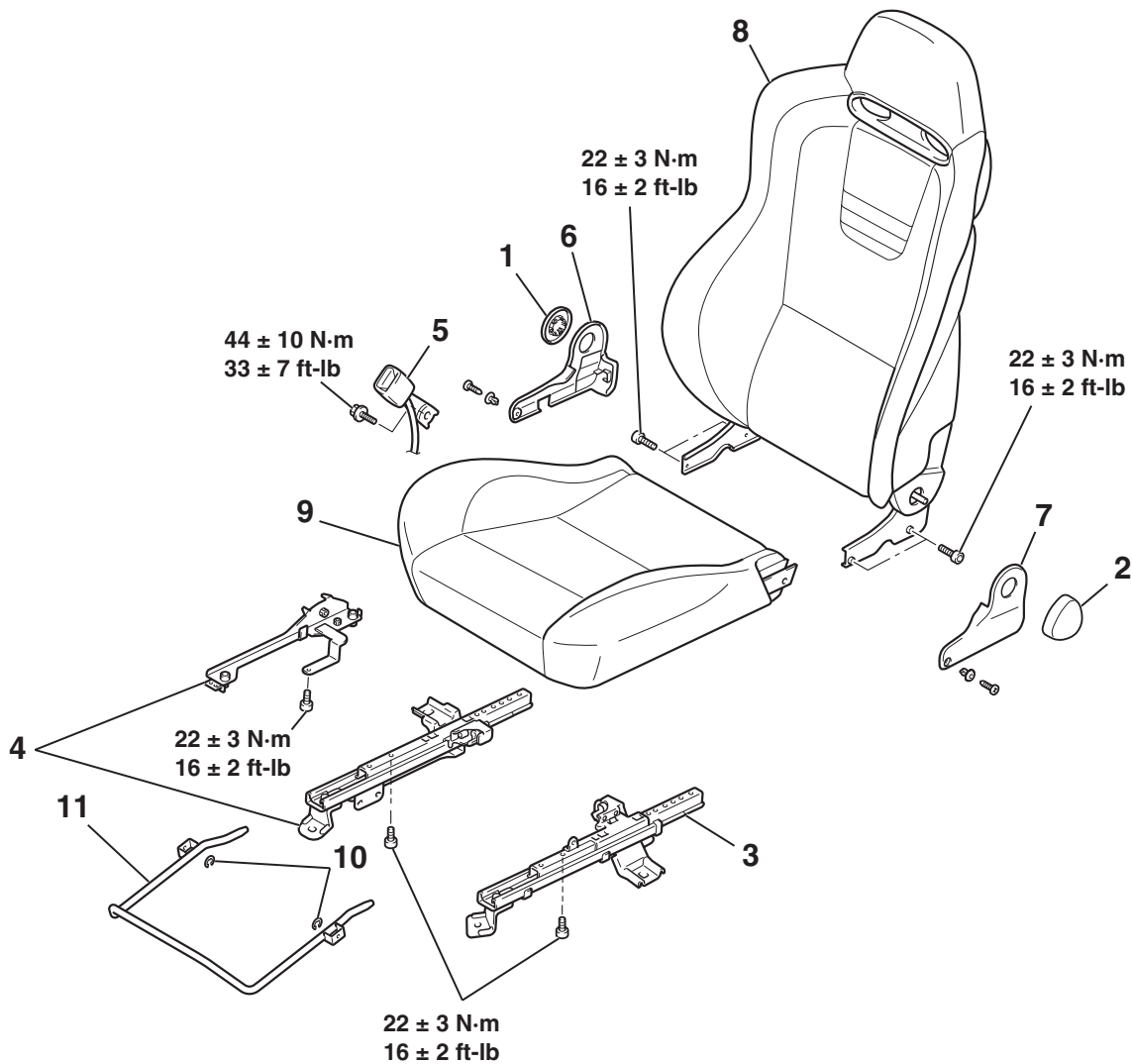
**INSTALLATION SERVICE POINT****>>A<< FRONT SEAT ASSEMBLY INSTALLATION**

1. Temporarily tighten the nuts and bolts in all mounting locations shown in the illustration with no load applied to the front seat cushion, and check the operation of the seat slide.
2. Tighten the nuts and bolts in all mounting locations to the specified torque.



DISASSEMBLY AND ASSEMBLY

M1522001500649



AC210103AB

**DISASSEMBLY STEPS**

1. CAP
2. RECLINING ADJUSTER KNOB
3. SLIDE ADJUSTER OUTER
4. SLIDE ADJUSTER INNER
5. INNER SEAT BELT
6. CUSHION SHIELD INNER

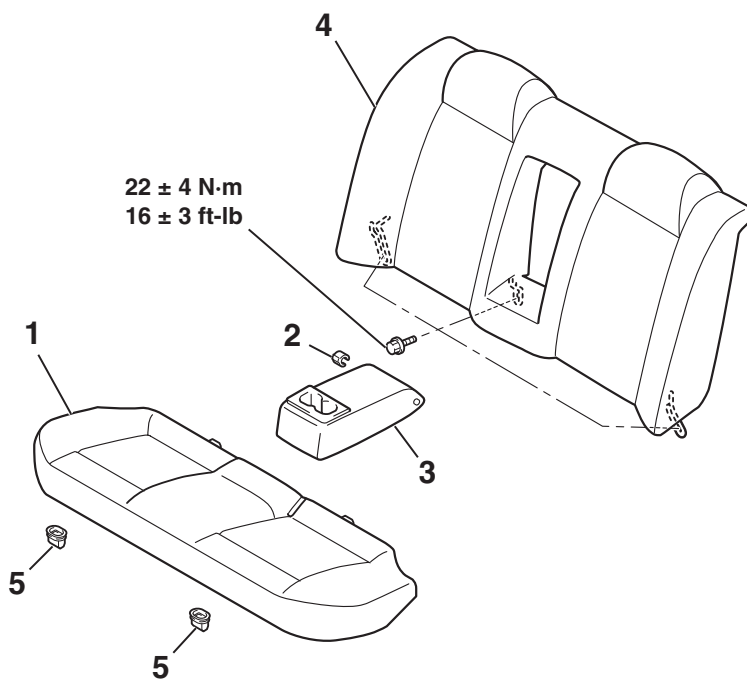
**DISASSEMBLY STEPS**

7. CUSHION SHIELD OUTER
8. SEATBACK ASSEMBLY
9. SEAT CUSHION ASSEMBLY
10. SNAP RING
11. SLIDE ADJUSTER LEVER

**REAR SEAT ASSEMBLY****REMOVAL AND INSTALLATION**

M1522001800349

&lt;STANDARD FEATURE&gt;

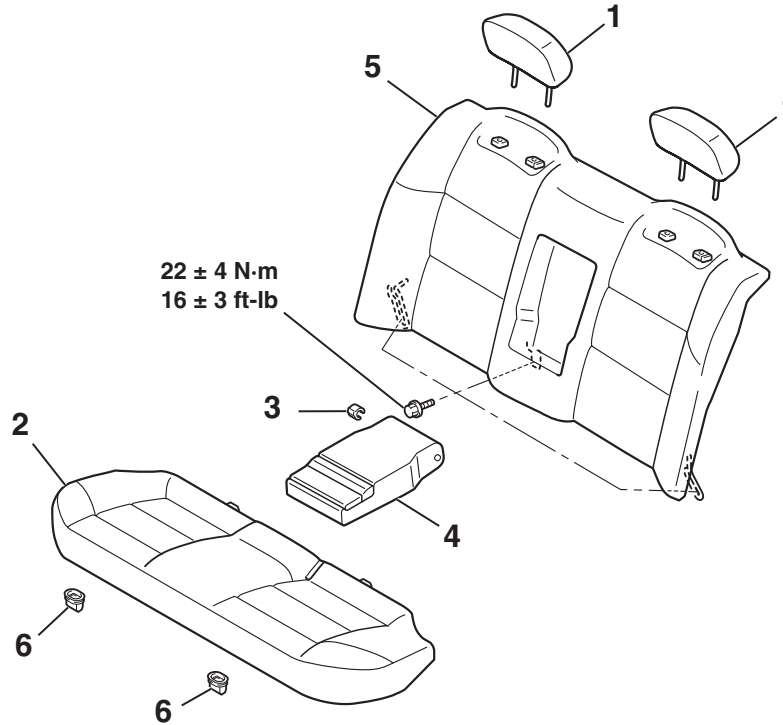


AC210050 AC

- >>B<<
- REMOVAL STEPS**
1. REAR SEAT CUSHION ASSEMBLY
  2. ARMREST SPACER

- >>A<<
- REMOVAL STEPS (Continued)**
3. ARMREST
  4. REAR SEATBACK ASSEMBLY
  5. REAR SEAT HOOK

<OPTION>



AC310031 AD

- >>B<<
1. HEADRESTRAINT
  2. REAR SEAT CUSHION ASSEMBLY
  3. ARMREST SPACER

**REMOVAL STEPS**

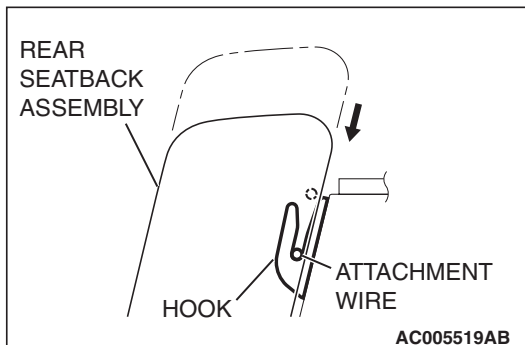
- >>A<<
4. ARMREST
  5. REAR SEATBACK ASSEMBLY
  6. REAR SEAT HOOK

**REMOVAL STEPS (Continued)**

**INSTALLATION SERVICE POINTS**

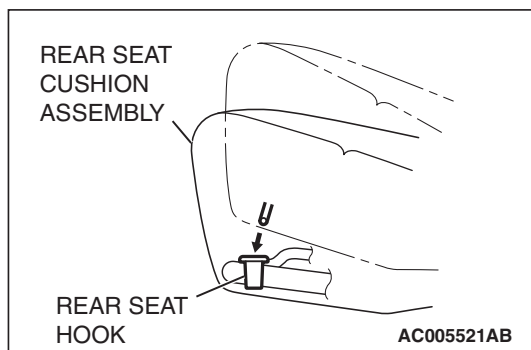
**>>A<< INSTALLATION OF REAR SEATBACK ASSEMBLY**

Press the rear seatback assembly in the direction shown in the illustration and fit the attachment wire into the hook securely to install the rear seatback assembly.



>>B<< INSTALLATION OF REAR SEAT CUSHION  
ASSEMBLY

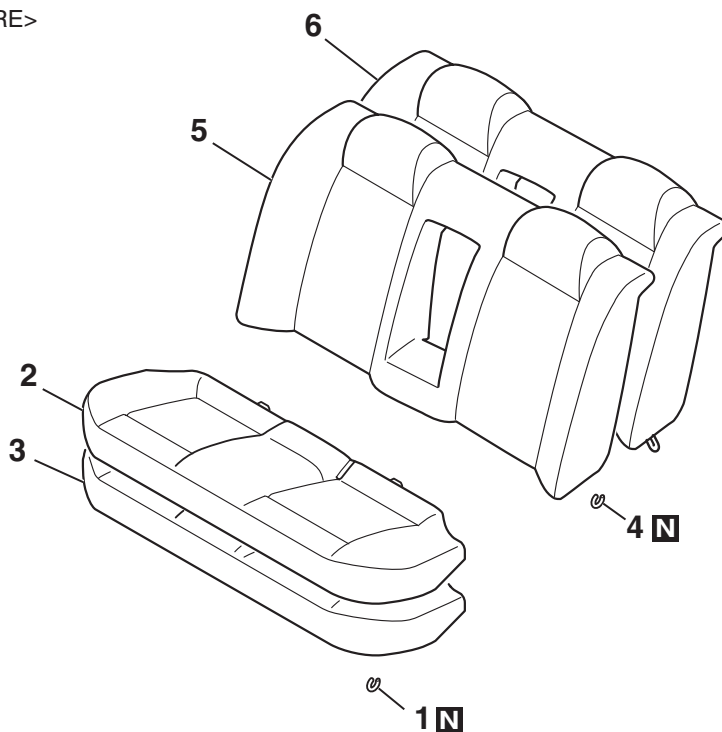
Fit the rear seat cushion into the rear seat hook securely.



## DISASSEMBLY AND ASSEMBLY

M1522002000391

&lt;STANDARD FEATURE&gt;



AC210052AC

**DISASSEMBLY STEPS**

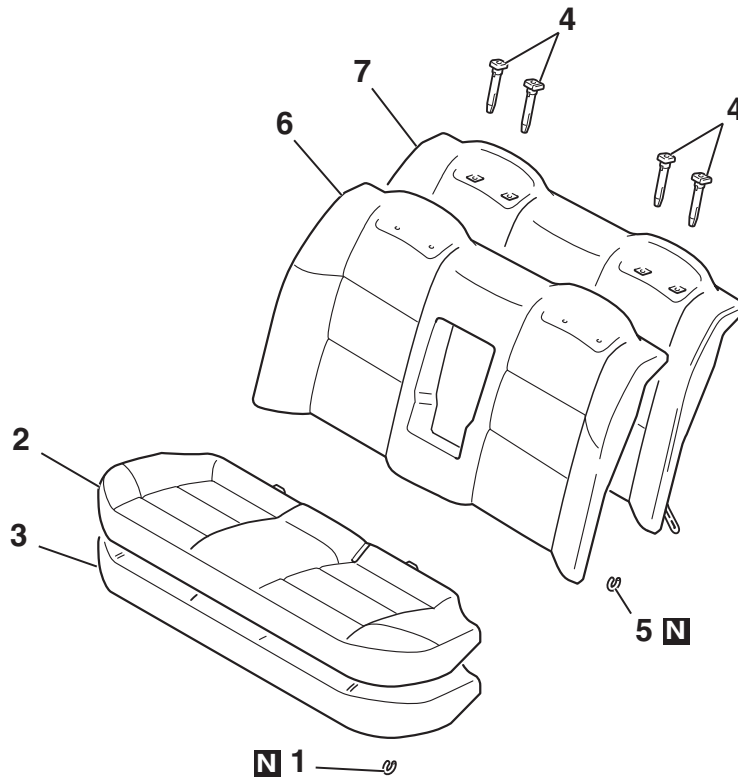
1. HOG RING
2. REAR SEAT CUSHION COVER
3. REAR SEAT CUSHION PAD

**DISASSEMBLY STEPS**

4. HOG RING
5. REAR SEATBACK COVER
6. REAR SEATBACK PAD



<OPTION>



AC310045 AD

**DISASSEMBLY STEPS**

1. HOG RING
2. REAR SEAT CUSHION COVER
3. REAR SEAT CUSHION PAD
4. HEADRESTRAINT GUIDE

**DISASSEMBLY STEPS**

4. HOG RING
5. REAR SEATBACK COVER
6. REAR SEATBACK PAD

## FRONT SEAT BELT

## REMOVAL AND INSTALLATION

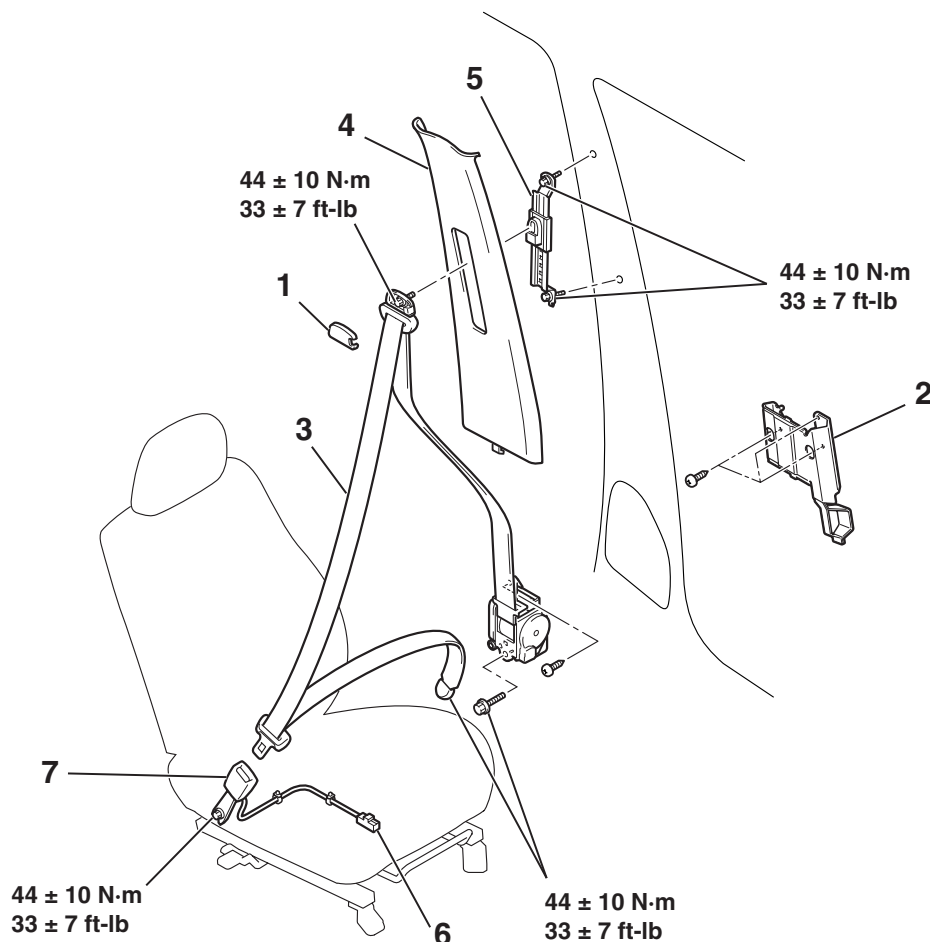
M1523001300530

**CAUTION**

**SRS:** Before removing and installing the seat belts with pre-tensioner, refer to **GROUP 52B, Seat Belts with Pre-tensioner P.52B-176**.

**Pre-removal and Post-installation Operation**

- Turn the ignition key to the LOOK (OFF) position.
- Disconnect the negative battery terminal.



AC210265AB

**OUTER SEAT BELT REMOVAL STEPS**

1. SASH GUIDE COVER
  - LOWER CENTER PILLAR TRIM (REFER TO [P.52A-11](#).)
2. BRACKET
3. OUTER SEAT BELT (REFER TO **GROUP 52B, SEAT BELTS WITH PRE-TENSIONER P.52B-176**)

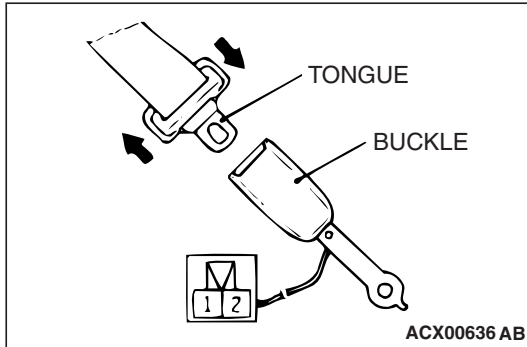
**OUTER SEAT BELT REMOVAL STEPS (Continued)**

4. UPPER CENTER PILLAR TRIM (REFER TO [P.52A-11](#).)
  5. ADJUSTABLE SEAT BELT ANCHOR
- INNER SEAT BELT REMOVAL STEPS**
6. HARNESS CONNECTOR
    - SHIELD COVER (REFER TO [P.52A-21](#).)
  7. INNER SEAT BELT

## INSPECTION

M1523001400366

### SEAT BELT SWITCH CONTINUITY CHECK

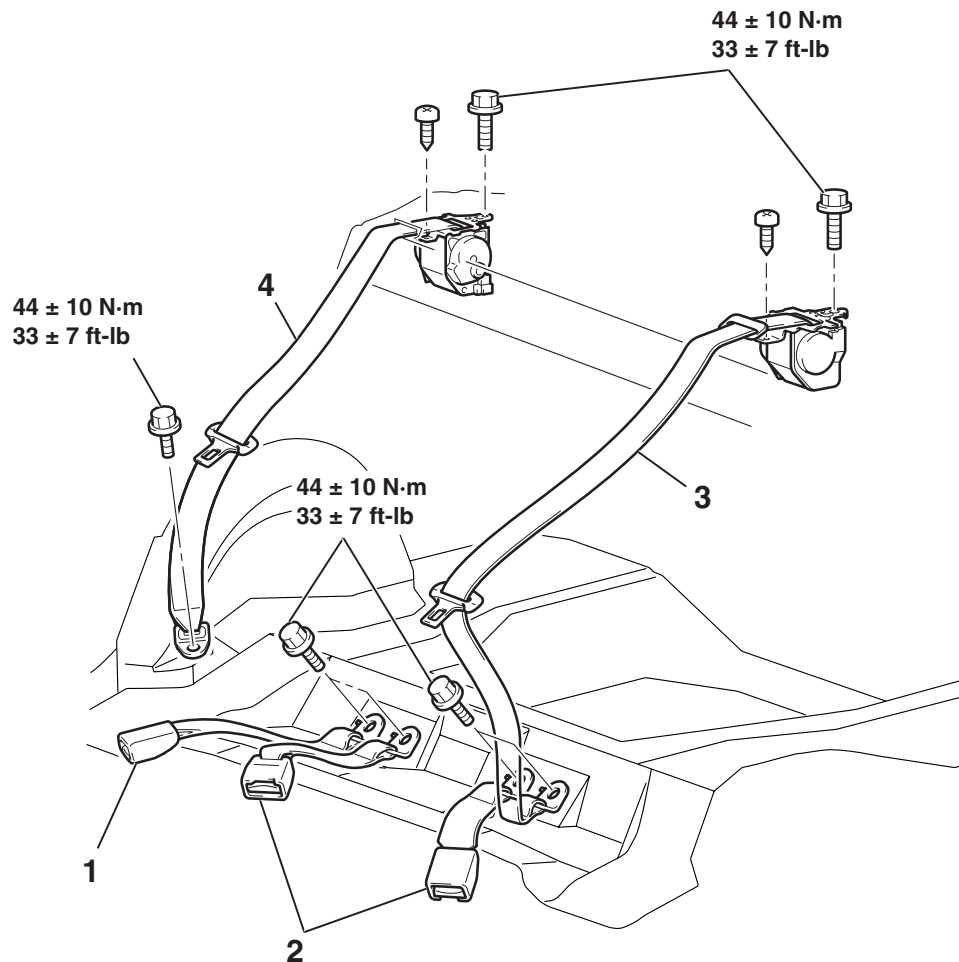


| ITEM                 | TESTER CONNECTION | SPECIFIED CONDITION |
|----------------------|-------------------|---------------------|
| Fastened seat belt   | 1 – 2             | Open circuit        |
| Unfastened seat belt | 1 – 2             | Less than 2 ohms    |

## REAR SEAT BELT

### REMOVAL AND INSTALLATION

M1523001600285



AC211443AB

**REMOVAL STEPS**

- REAR SEAT CUSHION ASSEMBLY (REFER TO [P.52A-22.](#))
- REAR SEATBACK ASSEMBLY (REFER TO [P.52A-22.](#))
- REAR SHELF TRIM (REFER TO [P.52A-11.](#))

**REMOVAL STEPS (Continued)**

1. CENTER SEAT BELT, INNER
2. INNER SEAT BLET
3. CENTER SEAT BELT, OUTER
4. OUTER SEAT BELT

**SPECIFICATIONS****FASTENER TIGHTENING SPECIFICATION**

M1521004100205

| ITEM                             | SPECIFICATION               |
|----------------------------------|-----------------------------|
| <b>TRIMS</b>                     |                             |
| Child restraint fitting bolt     | 22 ± 4 N· m (16 ± 3 ft-lb)  |
| <b>FRONT SEAT ASSEMBLY</b>       |                             |
| Front seat assembly bolt         | 45 ± 10 N· m (34 ± 7 ft-lb) |
| Front seat assembly nut          | 30 ± 5 N· m (22 ± 4 ft-lb)  |
| Seatback assembly bolt           | 22 ± 3 N· m (16 ± 2 ft-lb)  |
| Slide adjuster inner bolt        | 22 ± 3 N· m (16 ± 2 ft-lb)  |
| Slide adjuster outer bolt        | 22 ± 3 N· m (16 ± 2 ft-lb)  |
| <b>REAR SEAT ASSEMBLY</b>        |                             |
| Rear seatback assembly bolt      | 22 ± 4 N· m (16 ± 3 ft-lb)  |
| <b>FRONT SEAT BELT</b>           |                             |
| Adjustable seat belt anchor bolt | 44 ± 10 N· m (33 ± 7 ft-lb) |
| Inner seat belt bolt             | 44 ± 10 N· m (33 ± 7 ft-lb) |
| Outer seat belt bolt             | 44 ± 10 N· m (33 ± 7 ft-lb) |
| <b>REAR SEAT BELT</b>            |                             |
| Center seat blet, inner bolt     | 44 ± 10 N· m (33 ± 7 ft-lb) |
| Center seat belt, outer bolt     | 44 ± 10 N· m (33 ± 7 ft-lb) |
| Inner seat belt bolt             | 44 ± 10 N· m (33 ± 7 ft-lb) |
| Outer seat belt bolt             | 44 ± 10 N· m (33 ± 7 ft-lb) |