

---

**GROUP 33**

# **FRONT SUSPENSION**

## **CONTENTS**

**GENERAL INFORMATION . . . . . 33-2**

## GENERAL INFORMATION

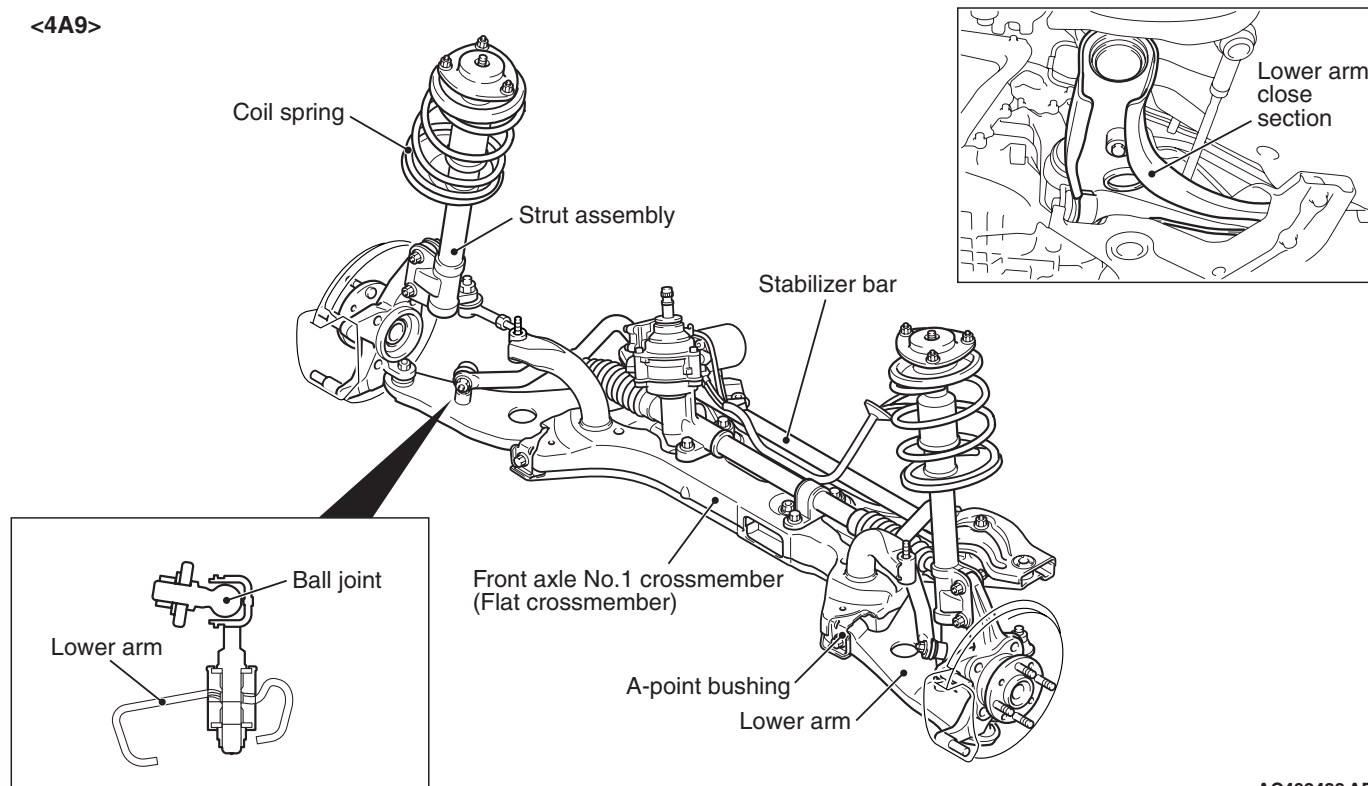
M2330000100824

Newly developed MacPherson strut suspension has been adopted.

- The steering gear box is installed in the lower position for better cornering performance.
- The roll centre and the kingpin axle are installed appropriately for better cornering performance.
- The long stroke strut is adopted for sufficient road holding quality.
- High-rigid and light-weight flat crossmember is adopted for sufficient suspension rigidity.
- The strut coil spring is installed appropriately for friction reduction and comfortable ride.
- The coil spring of high tension material is adopted for weight reduction.
- The open-section lower arm is adopted for weight reduction.

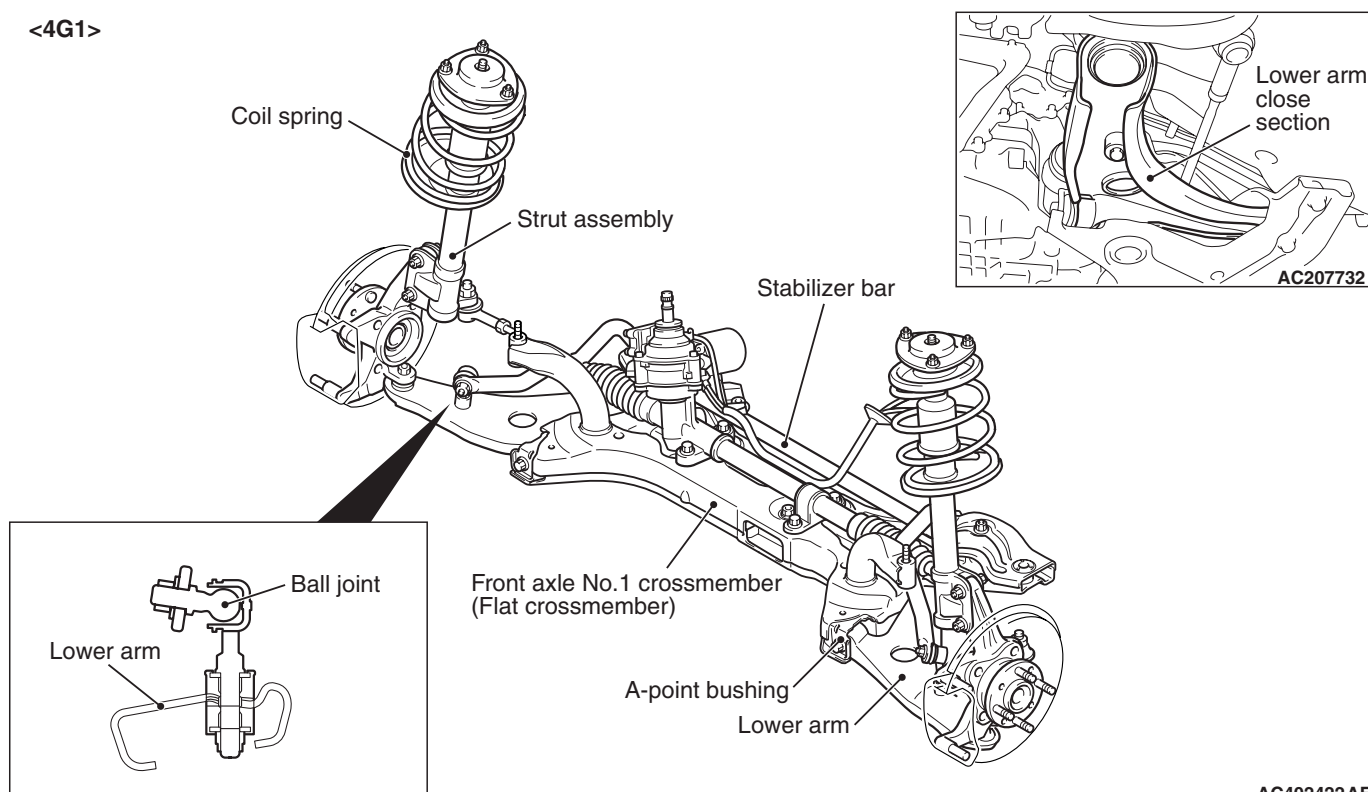
# CONSTRUCTION DIAGRAM

<4A9>



AC402422 AF

<4G1>



AC402422 AE

**SPECIFICATIONS**  
**SUSPENSION SYSTEM**

Item	Specification
Suspension type	MacPherson strut with coil spring

**WHEEL ALIGNMENT**

Item		Specification
Camber		– 0 °30'
Caster	4A9	2°35'
	4G1	2°40'
Kingpin inclination		13°20'
Toe-in	At the centre of tyre tread mm	0
	Toe-angle (per wheel)	0°

**COIL SPRING****<4A9>**

Item		Specification
Wire diameter mm		12
Average outside diameter mm		133 – 149 – 154
Free length mm	CVT	331
	5MT	301

**<4G1>**

Item	Specification
Wire diameter mm	13
Average outside diameter mm	133 – 150 – 154
Free length mm	300