

## GROUP 36

# PARKING BRAKES

## CONTENTS

<b>GENERAL INFORMATION . . . . .</b>	<b>36-2</b>	<b>PARKING BRAKE PEDAL &lt;CVT&gt; . . .</b>	<b>36-6</b>
		REMOVAL AND INSTALLATION . . . . .	36-6
<b>SERVICE SPECIFICATIONS . . . . .</b>	<b>36-3</b>	<b>PARKING BRAKE LEVER &lt;M/T&gt; . . .</b>	<b>36-7</b>
SERVICE SPECIFICATION . . . . .	36-3	REMOVAL AND INSTALLATION . . . . .	36-7
<b>ON-VEHICLE SERVICE . . . . .</b>	<b>36-4</b>	<b>PARKING BRAKE CABLE . . . . .</b>	<b>36-8</b>
PARKING BRAKE PEDAL STROKE		REMOVAL AND INSTALLATION . . . . .	36-8
CHECK AND ADJUSTMENT <CVT> . . . . .	36-4		
PARKING BRAKE LEVER STROKE			
CHECK AND ADJUSTMENT <M/T> . . . . .	36-4		
PARKING BRAKE SWITCH CHECK			
<CVT> . . . . .	36-5		
PARKING BRAKE SWITCH CHECK			
<M/T> . . . . .	36-5		

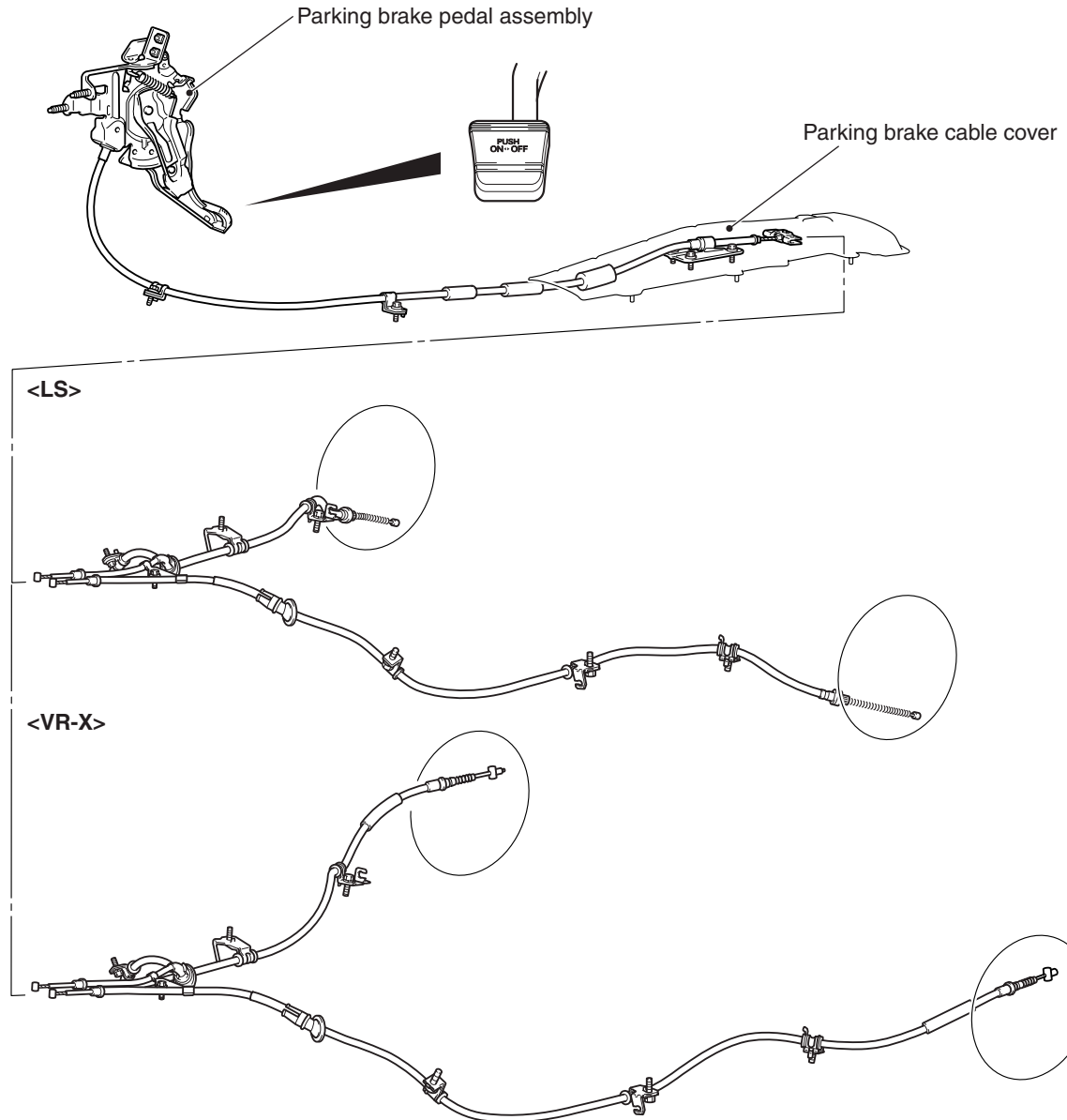
## GENERAL INFORMATION

M1361000100689

## &lt;CVT&gt;

By using a pedal-type parking brake, a certain space can be ensured between the front seats, thus enabling side walk-through facility.

A push-on push-release method makes the pedal operation easier.

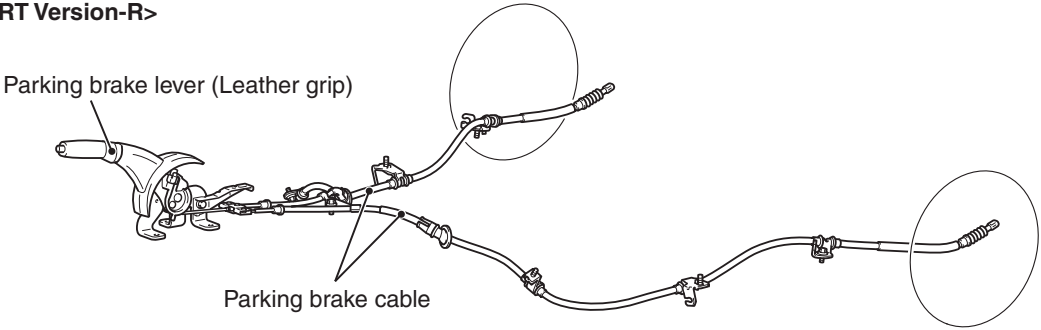


AC506311AC

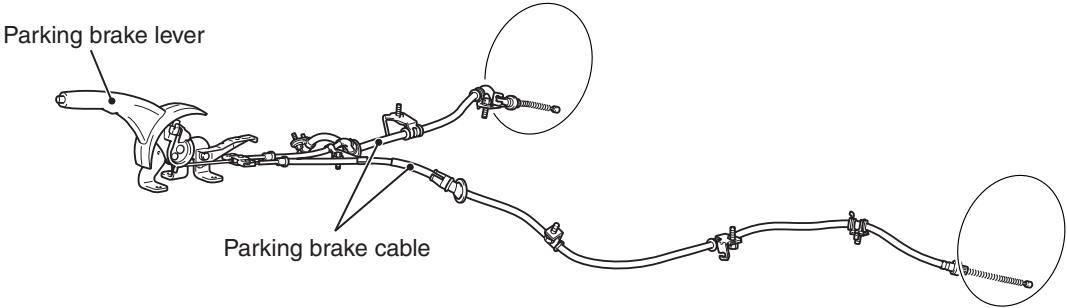
<M/T>

The parking brake is of a mechanical rear-wheel acting type, and its operation utilises a parking brake lever.

<RALLIART Version-R>



<LS, VR>



AC601652AB

SERVICE SPECIFICATIONS

SERVICE SPECIFICATION

M1361000300809

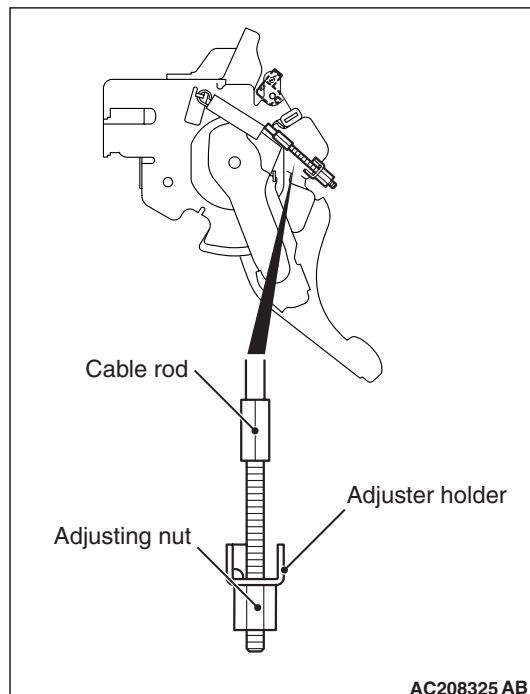
Item	Standard value
Parking brake pedal stroke (depressing force: 200 N) <CVT>	1 – 2 notches
Parking brake lever stroke (Operation force: 200 N) <M/T>	5 – 7 notches

## ON-VEHICLE SERVICE

PARKING BRAKE PEDAL STROKE  
CHECK AND ADJUSTMENT <CVT>

M1361005000159

1. Depress the parking brake pedal by 200 N.  
**Standard value: 1 – 2 notches**
2. If the parking brake pedal stroke is not within the standard value, adjust as described below.



- (1) Loosen the adjusting nut to the end of the cable rod in order to allow slack in the cables.
- (2) Depress the brake pedal repeatedly until the brake pedal has no change in its stroke.

**NOTE:** Depressing the brake pedal repeatedly adjusts shoe clearance correctly.

**⚠ CAUTION**

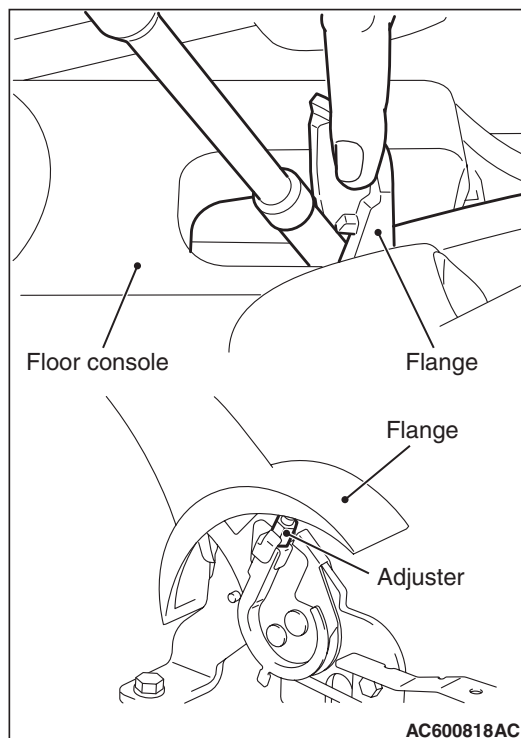
**If the parking brake lever stroke is below the standard value and the braking is too firm, the rear brakes may drag.**

- (3) Adjust the parking brake pedal stroke to the standard value by turning the adjusting nut. After the adjustment, ensure that there is no free play between the adjusting nut and the parking brake pedal. In addition, check that the adjusting nut is secured by the adjuster holder.
- (4) After the parking brake pedal stroke is adjusted, raise the rear of the vehicle. Release the parking brake, turn the rear wheels to confirm that the rear brakes are not dragging.

PARKING BRAKE LEVER STROKE  
CHECK AND ADJUSTMENT <M/T>

M1361000900674

1. Pull the parking brake lever with a force of 200 N and count the number of notches.  
**Standard value: 5 – 7 notches**
2. If the parking brake lever stroke is not the standard value, adjust as described below.



- (1) Turn up the flange of the parking brake lever, and loosen the adjuster to the end of the cable rod through the space on the floor console in order to free the cables.
- (2) With the engine idling, forcefully depress the brake pedal five or six times and confirm that the pedal stroke stops changing.

**NOTE:** If the pedal stroke stops changing, the automatic-adjustment mechanism is functioning normally, and the clearance between the shoe and drum is correct

**⚠ CAUTION**

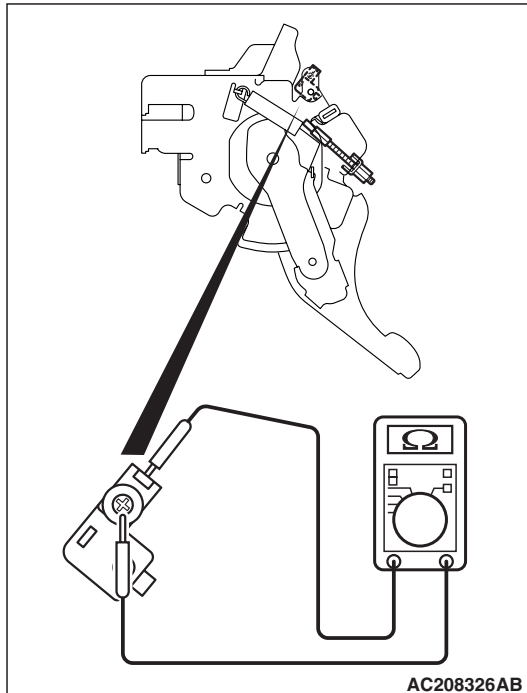
**If the parking brake lever stroke is below the standard value and the braking is too firm, the rear brakes may drag.**

- (3) Adjust the parking brake lever stroke to the standard value by turning the adjusting nut. After the adjustment, ensure that there is no free play between the adjusting nut and the parking brake lever.

- (4) After the parking brake lever stroke is adjusted, raise the rear of the vehicle. Release the parking brake, turn the rear wheels to confirm that the rear brakes are not dragging.

## **PARKING BRAKE SWITCH CHECK <CVT>**

M1361003300905

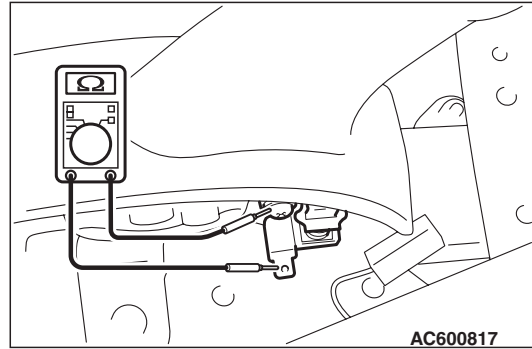


Check for continuity between the parking brake switch terminal and the switch mounting bolt.

When parking brake pedal is depressed	Continuity (Less than 2 Ω)
When parking brake pedal is released	Open circuit

## **PARKING BRAKE SWITCH CHECK <M/T>**

M1361003300875



1. Remove the floor console assembly. (Refer to GROUP 52A, Floor Console Assembly [P.52A-10](#)).
2. Check for continuity between the parking brake switch terminal and the switch mounting bolt.

When parking brake lever is pulled	Continuity (Less than 2 Ω)
When parking brake lever is released	Open circuit

## PARKING BRAKE PEDAL &lt;CVT&gt;

## REMOVAL AND INSTALLATION

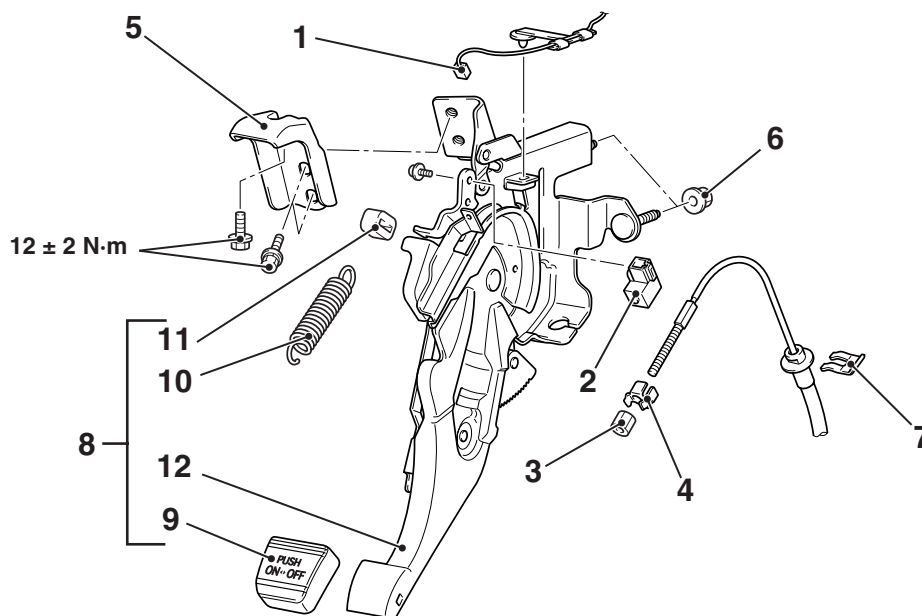
M1361001600193

**Pre-removal Operation**

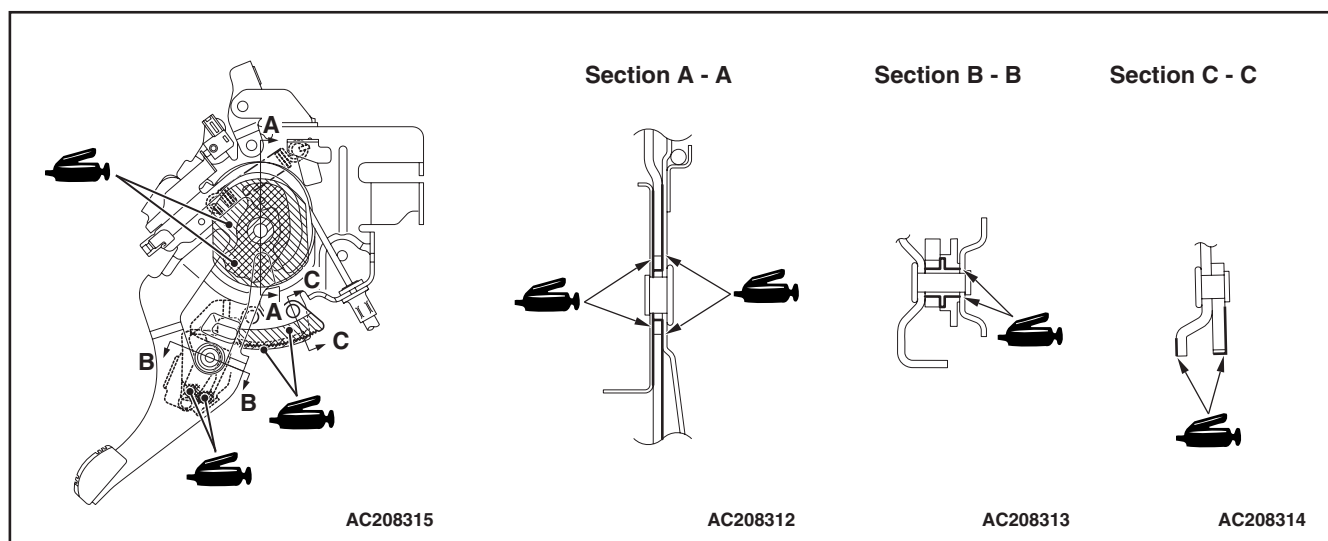
- Lower Panel Removal (Refer to GROUP 52A, Instrument Panel Assembly [P.52A-3](#)).

**Post-installation Operation**

- Lower Panel Installation (Refer to GROUP 52A, Instrument Panel Assembly [P.52A-3](#)).
- Parking Brake Pedal Stroke Adjustment (Refer to [P.36-4](#)).



AC208267



AC208910AB

**Removal steps**

1. Parking brake switch harness
2. Parking brake switch
3. Adjuster
4. Adjuster holder
5. Parking brake pedal bracket
6. Parking brake pedal mounting nut

**Removal steps (Continued)**

7. Clip
8. Parking brake pedal assembly
9. Pedal pad
10. Return spring
11. Stopper
12. Parking brake pedal

# PARKING BRAKE LEVER <M/T>

## REMOVAL AND INSTALLATION

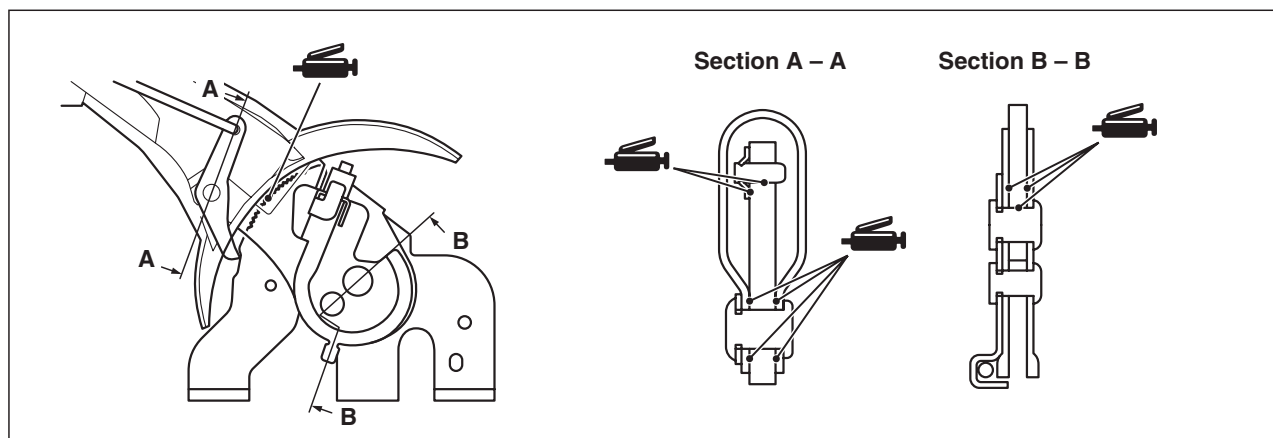
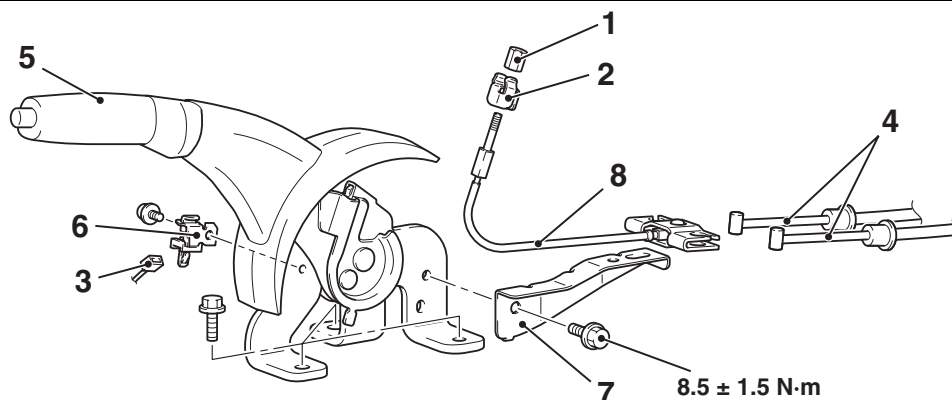
M1361001300664

### Pre-removal Operation

Floor Console Assembly Removal (Refer to GROUP 52A, Floor Console [P.52A-10](#)).

### Post-installation Operation

- Parking Brake Lever Stroke Adjustment (Refer to [P.36-4](#)).
- Floor Console Assembly Installation (Refer to GROUP 52A, Floor Console Assembly [P.52A-10](#)).



AC601059AC

### Removal steps

1. Adjuster
2. Nut holder
3. Parking brake switch connector
4. Rear parking brake cable connection
5. Parking brake lever assembly
6. Parking brake switch
7. Floor console rear bracket
8. Front parking brake cable

## PARKING BRAKE CABLE

## REMOVAL AND INSTALLATION

M1361001901119

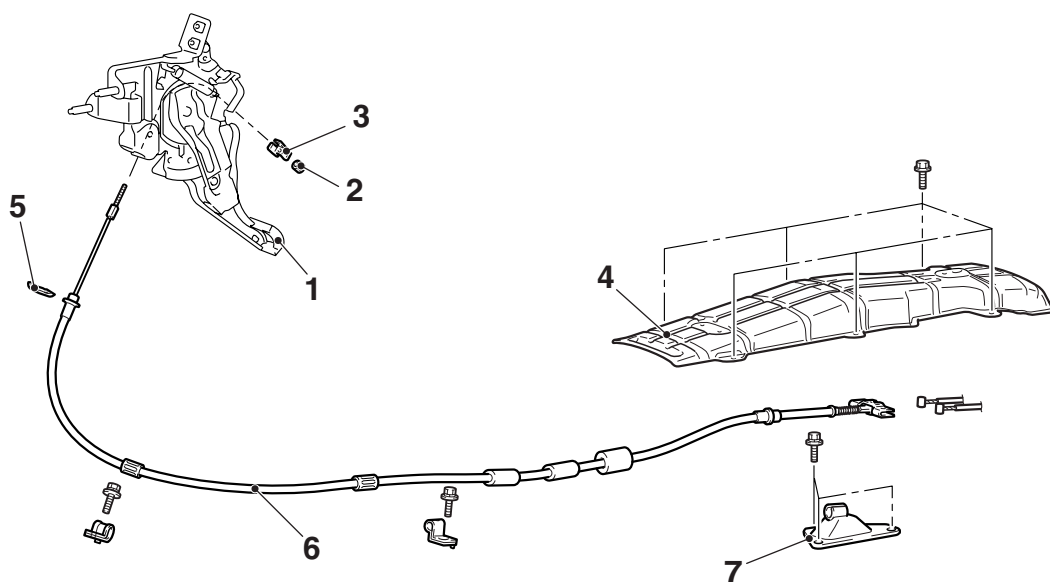
## &lt;FRONT (CVT)&gt;

**Pre-removal Operation**

- Foot Rest Removal
- Front Scuff Plate, Rear Scuff Plate, Cowl Side Trim, Lower Centre Pillar Trim Removal (Refer to GROUP 52A, Interior trims [P.52A-11](#)).
- Heater Unit Assembly Removal (Refer to GROUP 55, Heater Unit and Cooling Unit [P.55A-57](#)).
- Front Seat Assembly Removal (Refer to GROUP 52A, Front Seat Assembly [P.52A-20](#)).
- Rear Seat Assembly Removal (Refer to GROUP 52A, Rear Seat Assembly [P.52A-27](#)).
- Floor Carpet Removal

**Post-installation Operation**

- Floor Carpet Installation
- Rear Seat Assembly Installation (Refer to GROUP 52A, Rear Seat Assembly [P.52A-27](#)).
- Front Seat Assembly Installation (Refer to GROUP 52A, Front Seat Assembly [P.52A-20](#)).
- Heater Unit Assembly Installation (Refer to GROUP 55, Heater Unit and Cooling Unit [P.55A-57](#)).
- Front Scuff Plate, Rear Scuff Plate, Cowl Side Trim, Lower Centre Pillar Trim Installation (Refer to GROUP 52A, Interior trims [P.52A-11](#)).
- Foot Rest Installation
- Parking Brake Pedal Stroke Adjustment (Refer to [P.36-4](#)).



AC509631AB

**Removal steps**

1. Parking brake pedal assembly (Refer [P.36-6](#)).
2. Adjuster
3. Adjuster holder

**Removal steps (Continued)**

4. Parking brake cable cover
5. Clip
6. Front parking brake cable
7. Front parking brake cable bracket



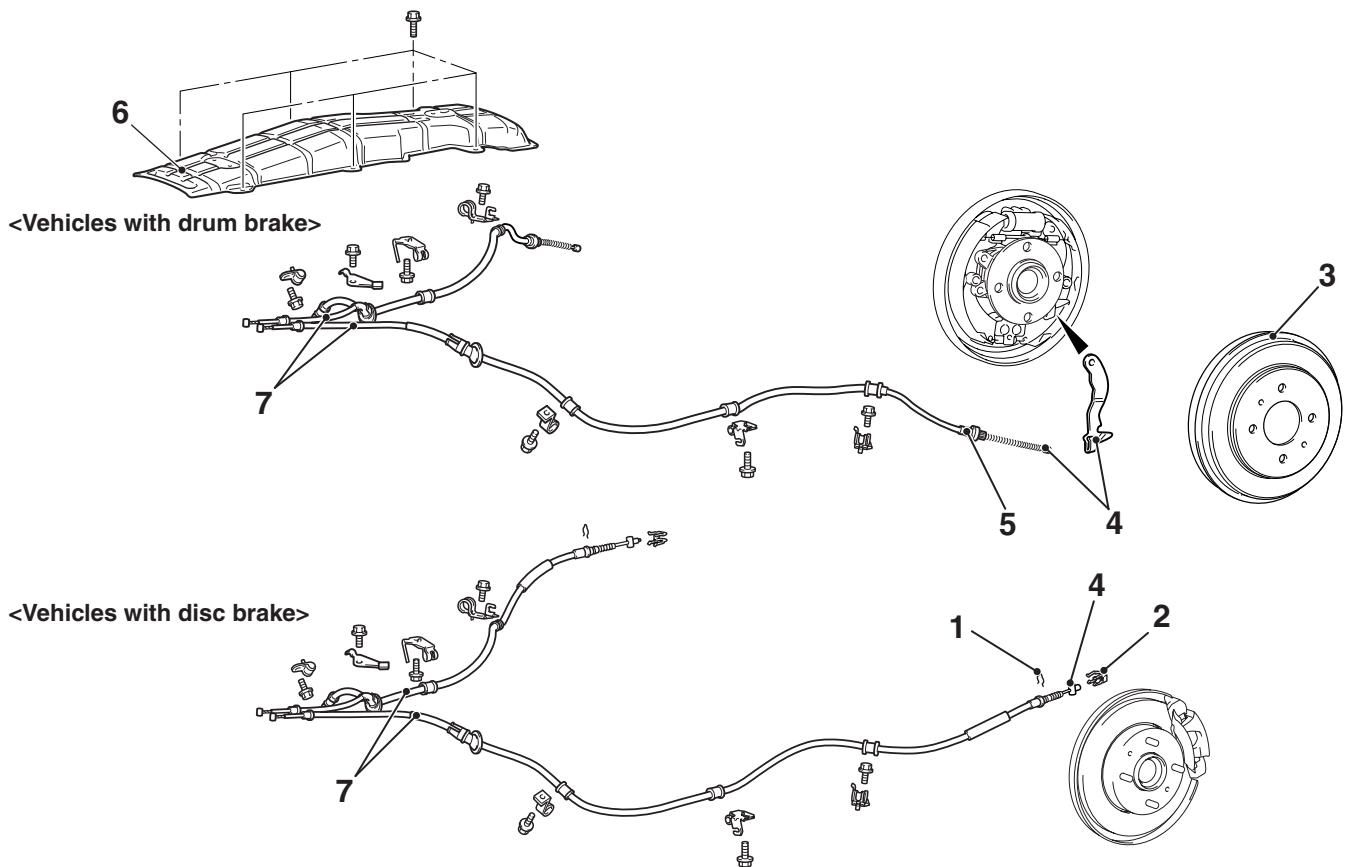
**<REAR (EXCEPT FOR RALLIART Version-R)>**

**Pre-removal Operation**

- Foot Rest Removal
- Floor Console Removal (Refer to GROUP 52A, Floor console assembly P.52A-10). <vehicles with floor shift>
- Front Scuff Plate, Rear Scuff Plate, Cowl Side Trim, Lower Centre Pillar Trim Removal (Refer to GROUP 52A, Interior trims P.52A-11).
- Heater Unit Assembly Removal (Refer to GROUP 55, Heater Unit and Cooling Unit P.55A-57).
- Front Seat Assembly Removal (Refer to GROUP 52A, Front Seat Assembly P.52A-20).
- Rear Seat Assembly Removal (Refer to GROUP 52A, Rear Seat Assembly P.52A-27).
- Floor Carpet Removal

**Post-installation Operation**

- Floor Carpet Installation
- Rear Seat Assembly Installation (Refer to GROUP 52A, Rear Seat Assembly P.52A-27).
- Front Seat Assembly Installation (Refer to GROUP 52A, Front Seat Assembly P.52A-20).
- Heater Unit Assembly Installation (Refer to GROUP 55, Heater Unit and Cooling Unit P.55A-57).
- Front Scuff Plate, Rear Scuff Plate, Cowl Side Trim, Lower Centre Pillar Trim Installation (Refer to GROUP 52A, Interior trims P.52A-11).
- Floor Console Installation (Refer to GROUP 52A, Floor console assembly P.52A-10). <vehicles with floor shift>
- Foot Rest Installation
- Parking Brake Pedal Stroke Adjustment (Refer to P.36-4). <CVT>
- Parking Brake Lever Stroke Adjustment (Refer to P.36-4). <M/T>



AC509632AB

**Removal steps**

1. Clip <Vehicles with disc brake>
2. Cable retainer <Vehicles with disc brake>
3. Brake drum <vehicles with drum brake>
4. Rear parking brake cable and parking lever connection

<<B>>

**Removal steps (Continued)**

5. Rear parking brake cable and backing plate connection <vehicles with drum brake>
6. Parking brake cable cover <CVT>
7. Rear parking brake cable

<<A>>

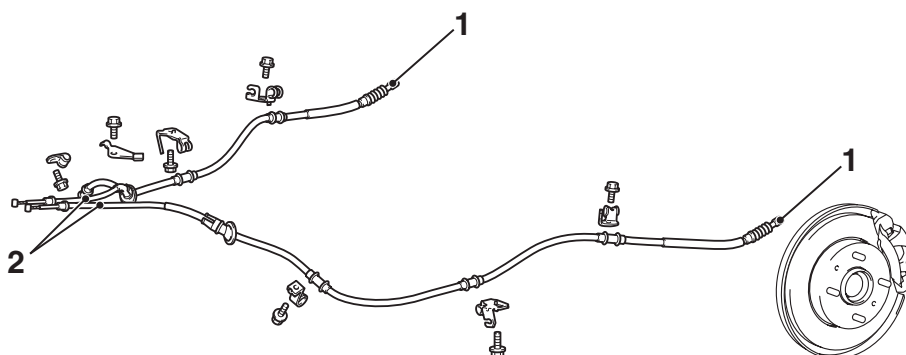
## &lt;REAR (RALLIART Version-R)&gt;

**Pre-removal Operation**

- Foot Rest Removal
- Front Scuff Plate, Rear Scuff Plate, Cowl Side Trim, Lower Centre Pillar Trim Removal (Refer to GROUP 52A, Interior trims P.52A-11).
- Heater Unit Assembly Removal (Refer to GROUP 55, Heater Unit and Cooling Unit P.55A-57).
- Front Seat Assembly Removal (Refer to GROUP 52A, Front Seat Assembly P.52A-20 <Except RECARO seat> or P.52A-22 <RECARO seat>).
- Rear Seat Assembly Removal (Refer to GROUP 52A, Rear Seat Assembly P.52A-27).
- Floor Carpet Removal

**Post-installation Operation**

- Floor Carpet Installation
- Rear Seat Assembly Installation (Refer to GROUP 52A, Rear Seat Assembly P.52A-27).
- Front Seat Assembly Installation (Refer to GROUP 52A, Front Seat Assembly P.52A-20 <Except RECARO seat> or P.52A-22 <RECARO seat>).
- Heater Unit Assembly Installation (Refer to GROUP 55, Heater Unit and Cooling Unit P.55A-57).
- Front Scuff Plate, Rear Scuff Plate, Cowl Side Trim, Lower Centre Pillar Trim Installation (Refer to GROUP 52A, Interior trims P.52A-11).
- Foot Rest Installation
- Parking Brake Lever Stroke Adjustment (Refer to P.36-4).



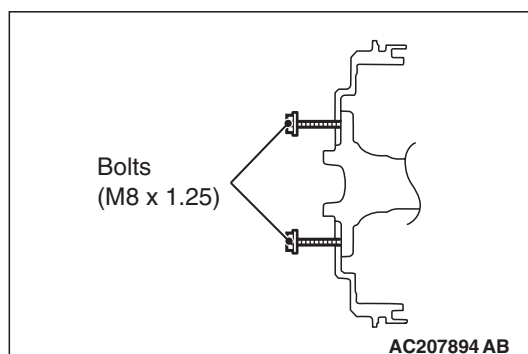
AC602245AB

**Removal steps**

1. Rear parking brake cable and parking lever connection
2. Rear parking brake cable

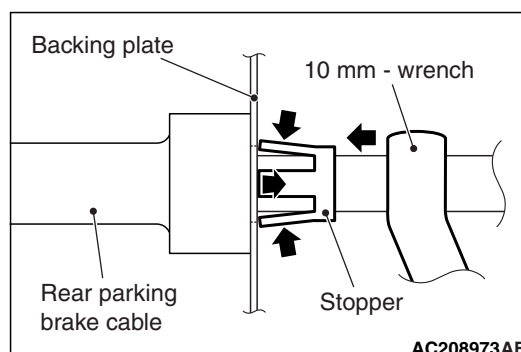
**REMOVAL SERVICE POINT**

## &lt;&lt;A&gt;&gt; BRAEK DRUM REMOVAL



Use M8×1.25 bolts as shown to remove the brake drum by tightening them evenly.

## &lt;&lt;B&gt;&gt; REAR PARKING BRAKE CABLE AND BACKING PLATE CONNECTION REMOVAL



Withdraw the parking brake cable from the backing plate.

**NOTE:** Insert a 10 mm-wrench into the parking brake cable to facilitate the cable withdrawal.