
GROUP 27

REAR AXLE

CONTENTS

SERVICE SPECIFICATIONS.....	27-2	WHEEL BEARING ROTARY-SLIDING RESISTANCE CHECK	27-4
SPECIAL TOOLS.....	27-2	HUB BOLT REPLACEMENT.....	27-5
ON-VEHICLE SERVICE.....	27-3	REAR AXLE HUB ASSEMBLY	27-6
WHEEL BEARING AXIAL PLAY CHECK..	27-3	REMOVAL AND INSTALLATION	27-6
		INSPECTION.....	27-8

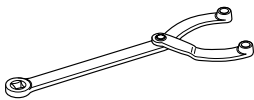
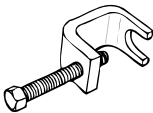
SERVICE SPECIFICATIONS

M1271000300762

Item	Limit
Wheel bearing axial play mm	0.05
Wheel bearing rotary-sliding resistance N	19 or less

SPECIAL TOOLS

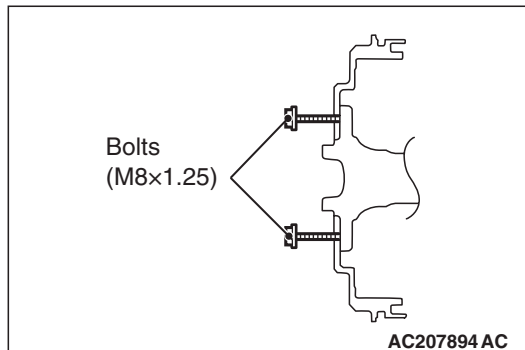
M1271000600343

Tool	Number	Name	Use
 B990767	MB990767	Front hub & flange yoke holder	Hub fixing
 MB991618	MB991618	Hub bolt remover	Hub bolt removal

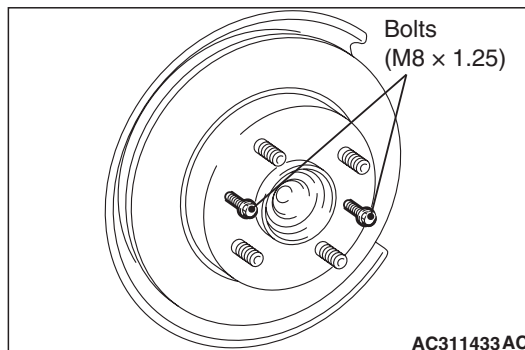
ON-VEHICLE SERVICE

WHEEL BEARING AXIAL PLAY CHECK

M1271000900753

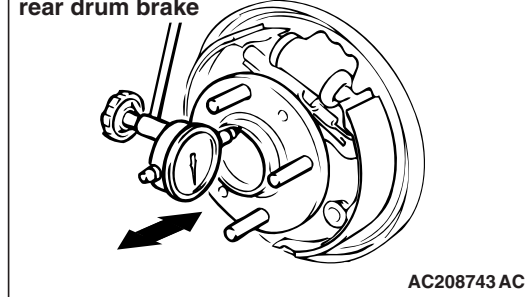


1. For vehicles with rear drum brake, remove the brake drum. If the brake drum is seized, install M8 × 1.25 bolts as shown, and remove the drum by tightening the bolts evenly and gradually.

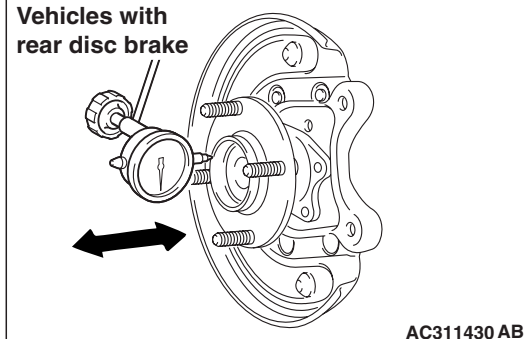


2. For vehicles with rear disc brake, remove the caliper assembly, and suspend the caliper assembly with a wire and remove the brake disc. If the brake disc is seized, install M8 × 1.25 bolts as shown, and remove the disc by tightening the bolts evenly and gradually. <4A9>

Vehicles with
rear drum brake



Vehicles with
rear disc brake



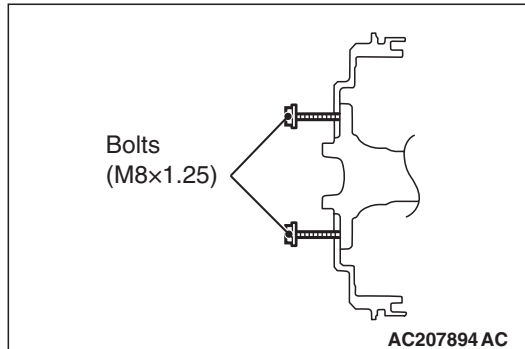
3. Check the bearing's axial play. Place a dial gauge against the hub surface; then move the hub in the axial direction and check whether or not there is axial play.

Limit: 0.05 mm

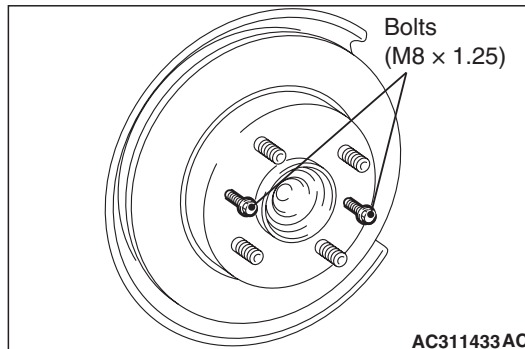
4. If the play exceeds the limit, replace the rear hub assembly.

WHEEL BEARING ROTARY-SLIDING
RESISTANCE CHECK

M1271001100448



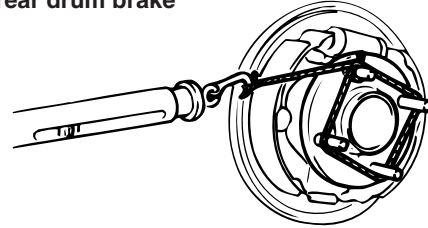
1. For vehicles with rear drum brake, remove the brake drum. If the brake drum is seized, install M8 \times 1.25 bolts as shown, and remove the drum by tightening the bolts evenly and gradually.



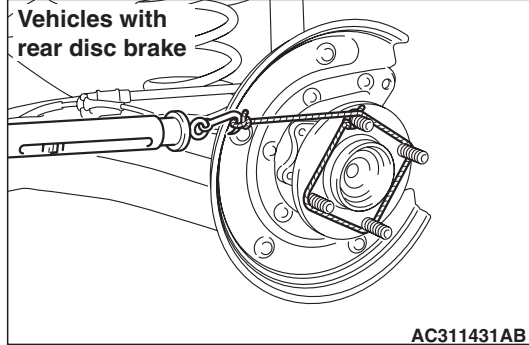
2. For vehicles with rear disc brake, remove the caliper assembly, and suspend the caliper assembly with a wire and remove the brake disc. If the brake disc is seized, install M8 \times 1.25 bolts as shown, and remove the disc by tightening the bolts evenly and gradually. <4A9>

3. Turn the hub a few times to seat the bearing.

Vehicles with
rear drum brake



Vehicles with
rear disc brake



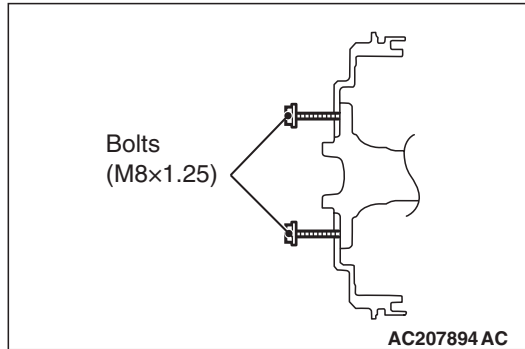
4. Wind a rope around the hub bolt and turn the hub by pulling at a 90° angle with a spring balance. Measure to determine whether or not the rotary-sliding resistance of the wheel bearing is within the limit value.

Limit: 19 N or less

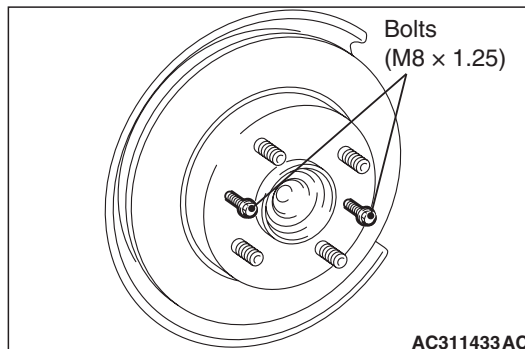
5. If the measured value is exceeded the limit value, replace the rear hub assembly.

HUB BOLT REPLACEMENT

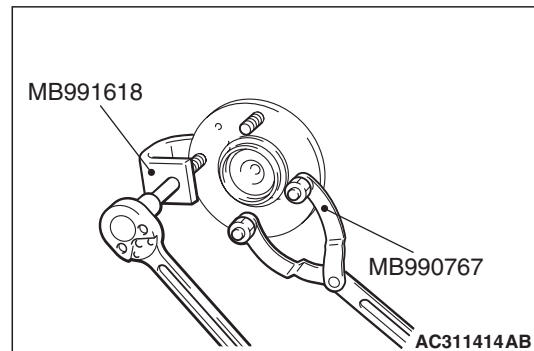
M1271001000452



1. For vehicles with rear drum brake, remove the brake drum. If the brake drum is seized, install M8 \times 1.25 bolts as shown, and remove the drum by tightening the bolts evenly and gradually.



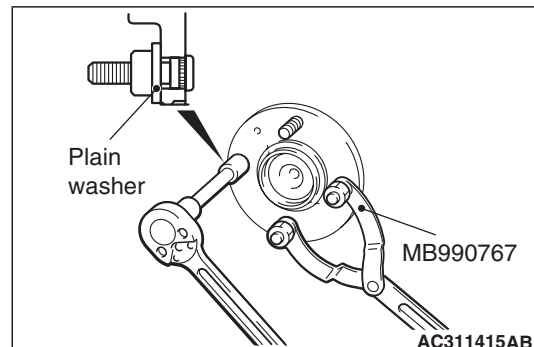
2. For vehicles with rear disc brake, remove the caliper assembly, and suspend the caliper assembly with a wire and remove the brake disc. If the brake disc is seized, install M8 \times 1.25 bolts as shown, and remove the disc by tightening the bolts evenly and gradually. <4A9>



3. Use the following special tools to remove the hub bolts.

- Front hub & flange yoke holder (MB990767)
- Hub bolt remover (MB991618)

NOTE: To retain a space for removing the hub bolts, remove them near the place shown in the illustration.



4. Install the plain washer to the new hub bolt, and install the bolt with a nut.

REAR AXLE HUB ASSEMBLY

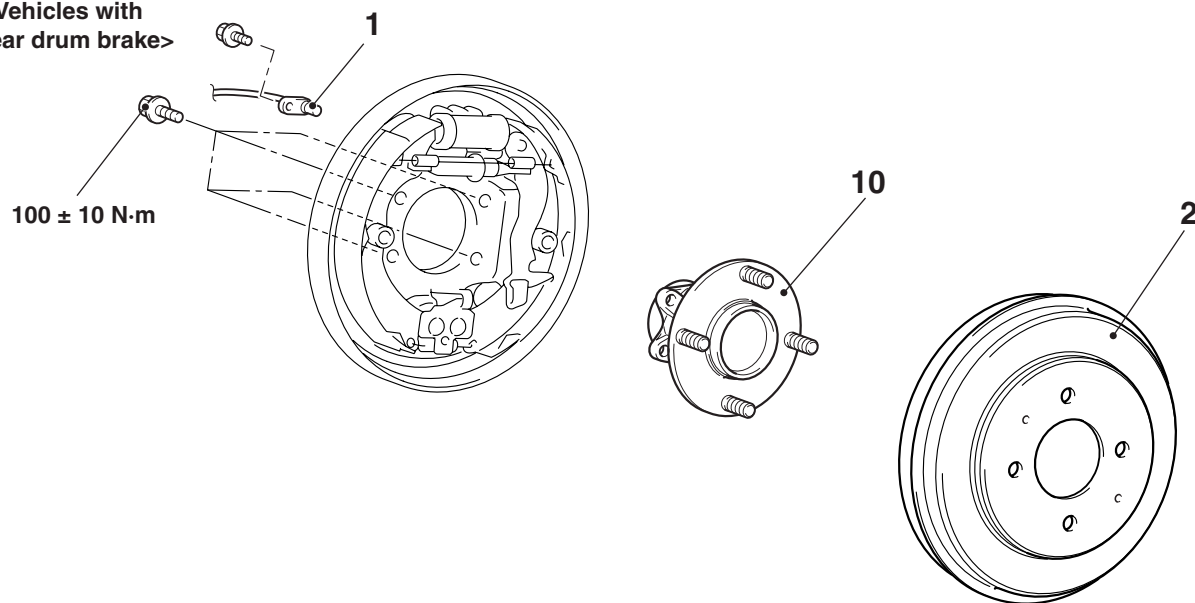
REMOVAL AND INSTALLATION

M1271002000778

⚠ CAUTION

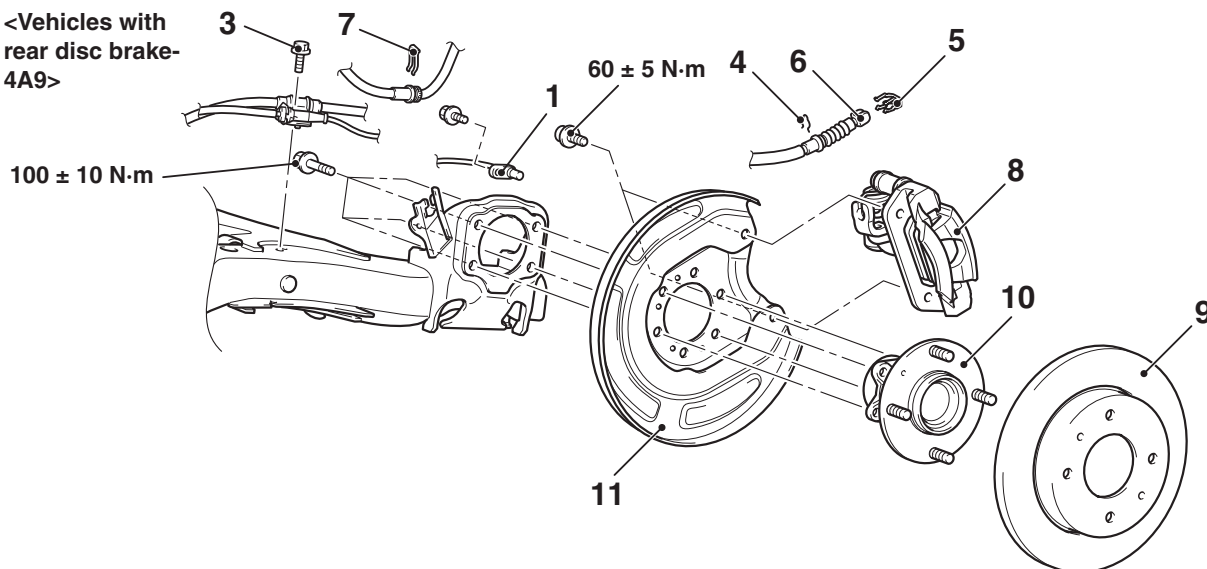
- Do not disassemble the rear hub assembly.
- The magnetic encoder collects any metallic particle easily, because it is magnetized. Make sure that the magnetic encoder should not collect any metallic particle. Check that there is not any trouble prior to reassembling it.
- When the rear hub assembly is removed and installed, make sure that the magnetic encoder does not contact with surrounding parts to avoid damage.
- When the rear wheel speed sensor is removed and installed, make sure that its pole piece does not contact with surrounding parts to avoid damage.

<Vehicles with
rear drum brake>



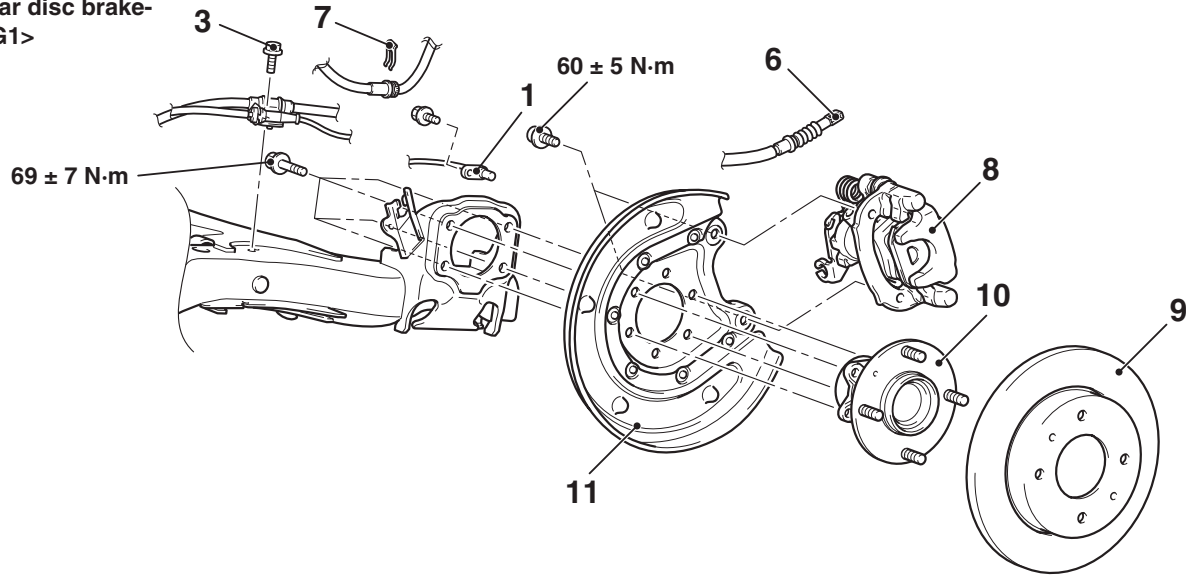
AC505145 AE

<Vehicles with
rear disc brake-
4A9>



AC402425AG

<Vehicles with
rear disc brake-
4G1>



AC511711AF

Removal steps

1. Rear wheel speed sensor
2. Brake drum
3. Bolt
4. Clip <Vehicles with rear disc brake - 4A9>
5. Cable retainer <Vehicles with rear disc brake - 4G1>

Removal steps (Continued)

6. Parking brake cable and caliper assembly connection
7. Brake hose clamp <Vehicles with rear disc brake>
8. Caliper assembly
9. Brake disc
10. Rear hub assembly
11. Disc brake adapter assembly

<<A>>

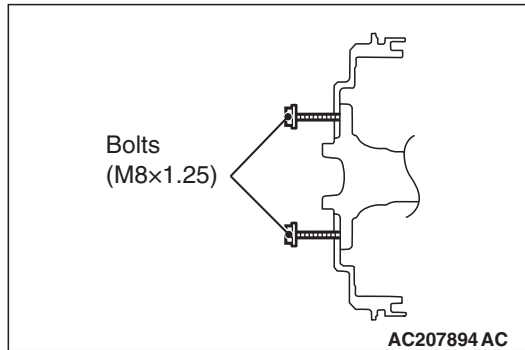
<>

<<C>>

>>A<<

REMOVAL SERVICE POINTS

<<A>>BRAKE DRUM REMOVAL

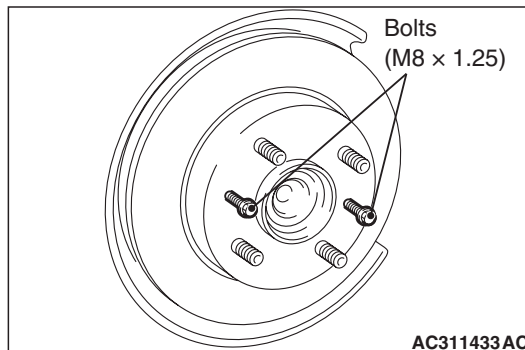


If the brake drum is seized, install $M8 \times 1.25$ bolts as shown, and remove the drum by tightening the bolts evenly and gradually.

<>CALIPER ASSEMBLY REMOVAL

Secure the removed caliper assembly with wire, etc.

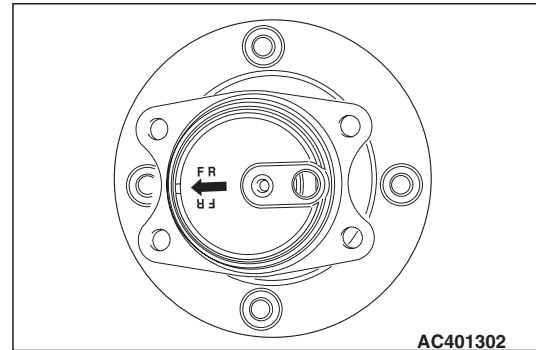
<<C>>BRAKE DISC REMOVAL



If the brake disc is seized, install $M8 \times 1.25$ bolts as shown, and remove the drum by tightening the bolts evenly and gradually. <4A9>

INSTALLATION SERVICE POINT

>>A<<REAR HUB ASSEMBLY INSTALLATION



Direct the arrow mark forward, and install the rear hub assembly.

INSPECTION

- Check the rear hub assembly for crack or damage.

M1271002100281