
GROUP 22B

MANUAL TRANSMISSION OVERHAUL

CONTENTS

GENERAL SPECIFICATIONS.....	22B-2	SEALANTS.....	22B-2
TORQUE SPECIFICATION	22B-2	TRANSMISSION.....	22B-3
		DISASSEMBLY AND REASSEMBLY	22B-3

GENERAL SPECIFICATIONS

M1222000200633

TRANSMISSION MODEL TABLE

Transmission model	Final gear ratio	Vehicle model	Engine model
F5MGA-1-B3Z	4.158	Z23A	4A91
F5MGB-1-A4Z	3.737	Z27A	4G15

GEAR RATIO TABLE

Item	F5MGA-1-B3Z	F5MGB-1-A4Z
1st	3.308	3.538
2nd	1.913	1.913
3rd	1.258	1.344
4th	0.943	1.027
5th	0.763	0.833
Reverse	3.231	3.357

TORQUE SPECIFICATION

M1222012100451

Item	Specifications
Shift cover Cpl. mounting screw	23 ± 2 N·m
Control harness bracket mounting screw	27 ± 1 N·m
Back-up lamp switch mounting screw	7.0 ± 1.0 N·m
Cable bracket mounting screw	23 ± 2 N·m

SEALANTS

M1222000500270

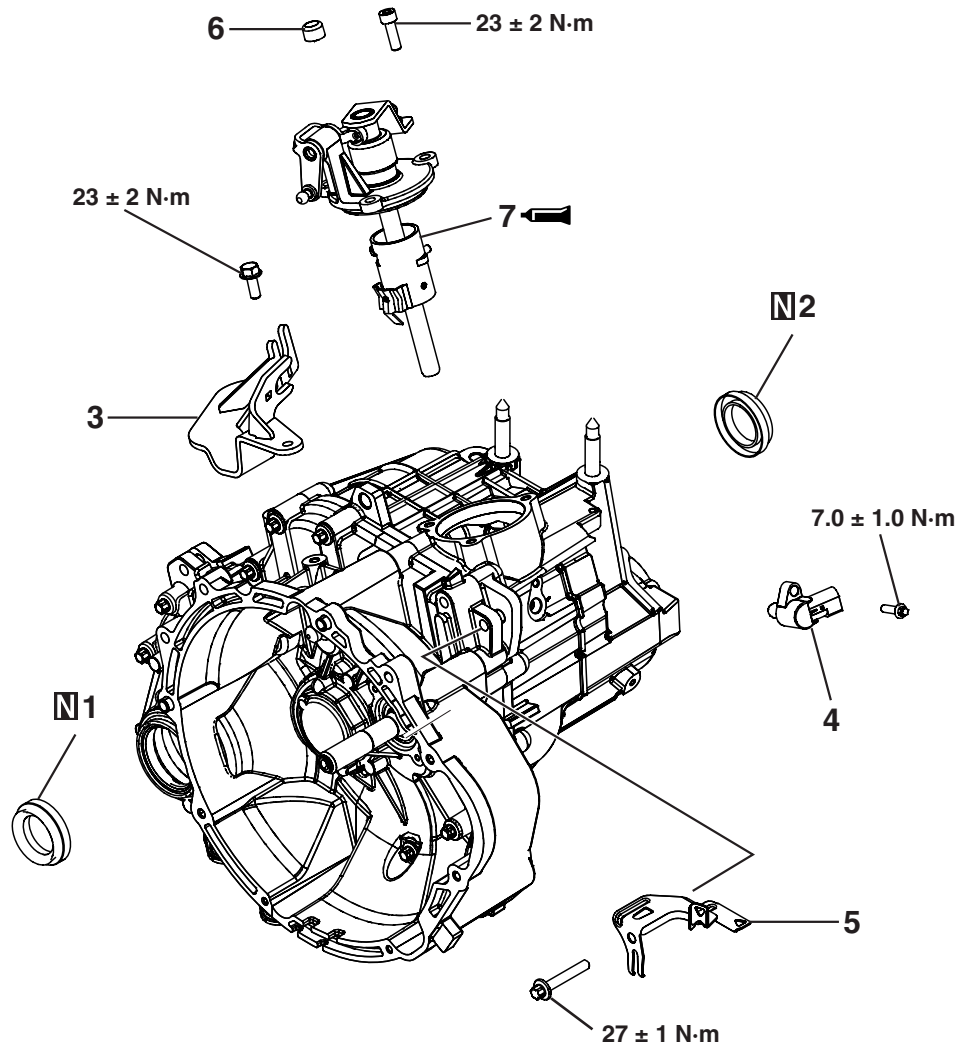
Item	Specified sealant
Shift cover Cpl. – Transmission case mating surface	Loctite 518

TRANSMISSION

DISASSEMBLY AND REASSEMBLY

M1222001000717

<F5MGA-1-B3Z>



AK600544 AB

Disassembly steps

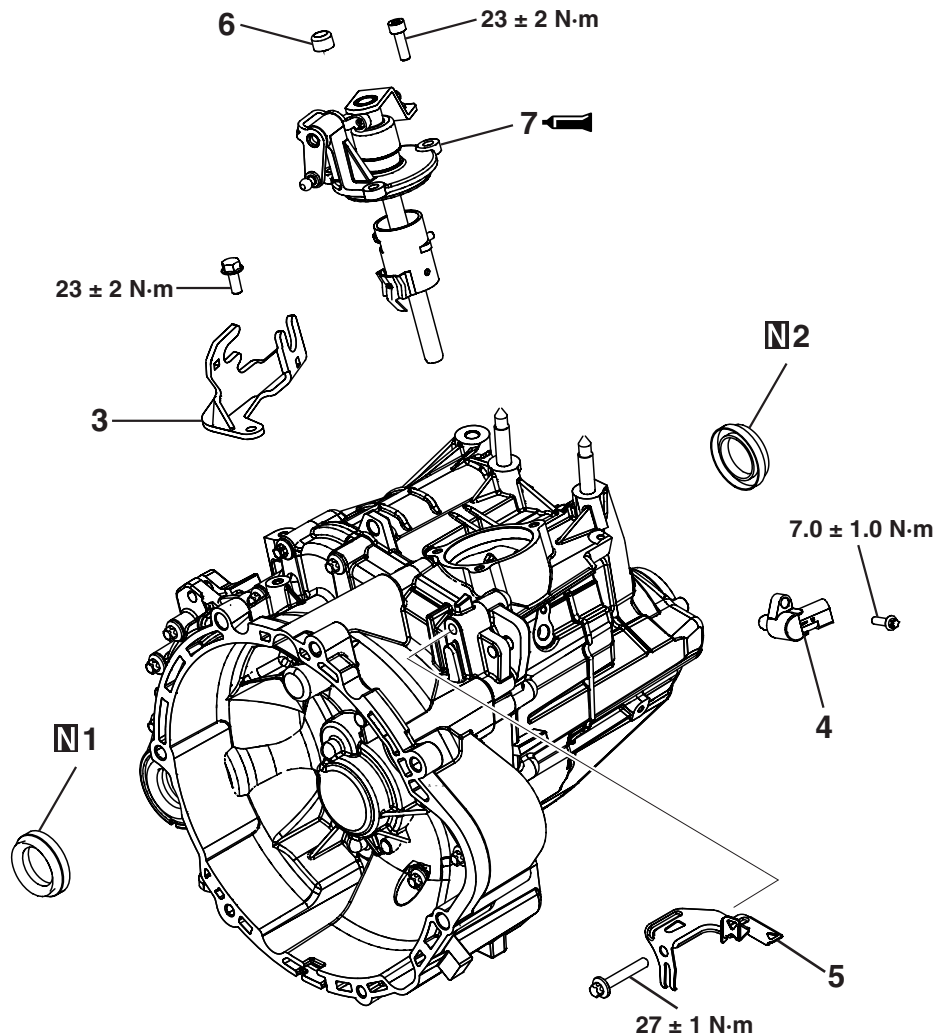
1. Seal ring
2. Seal ring
3. Cable bracket
4. Back-up lamp switch
5. Control harness bracket

Disassembly steps (Continued)

6. Seal cap vent
7. Shift cover Cpl.

>>A<<

<F5MGB-1-A4Z>



AK600548AB

Disassembly steps

1. Seal ring
2. Seal ring
3. Cable bracket
4. Back-up lamp switch
5. Control harness bracket
6. Seal cap vent
- >>A<< 7. Shift cover Cpl.

REASSEMBLY SERVICE POINT**>>A<< SHIFT COVER CPL. INSTALLATION**

Coat the mating face with the specified sealant.

Specified sealant: Loctite 518