

[HOME](#)

GROUP 5

SYNTHETIC-RESIN PARTS

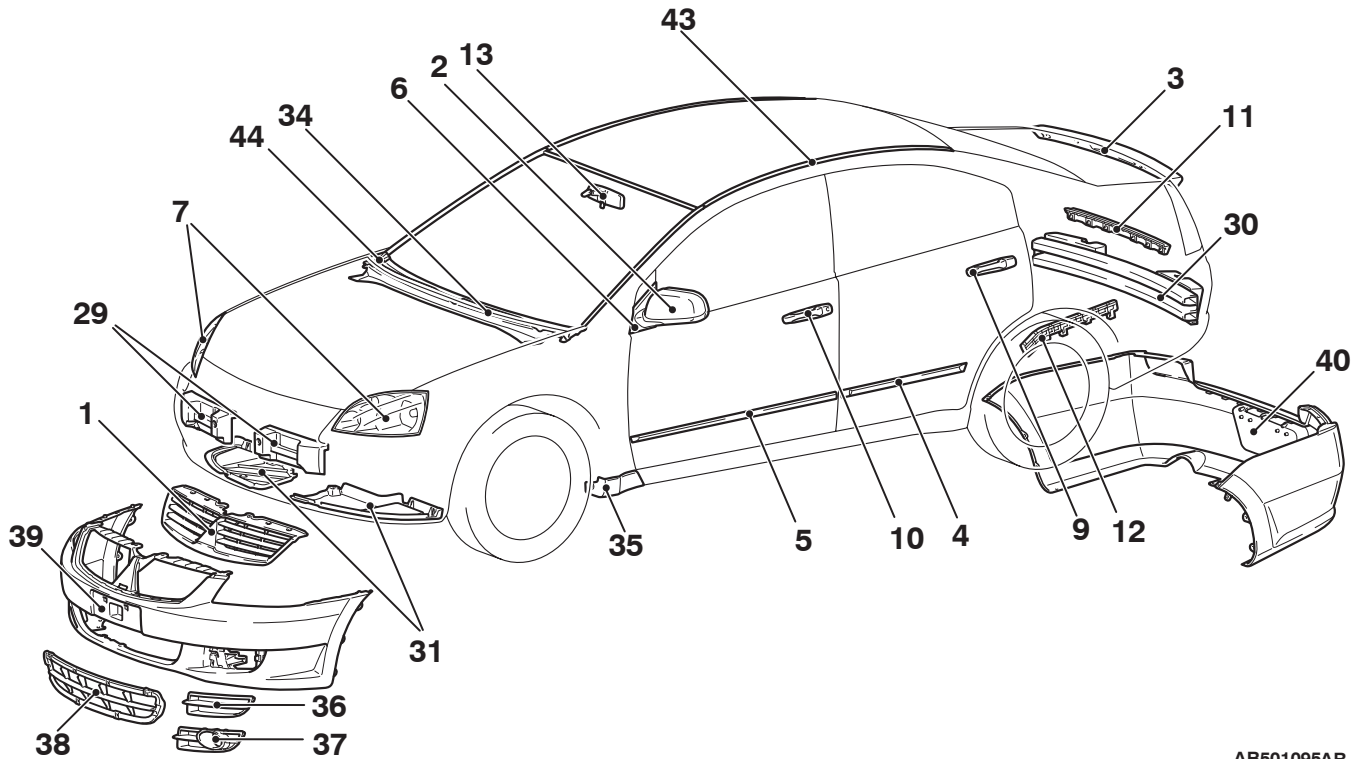
CONTENTS

LOCATION OF SYNTHETIC-RESIN PARTS	5-2
--	-----

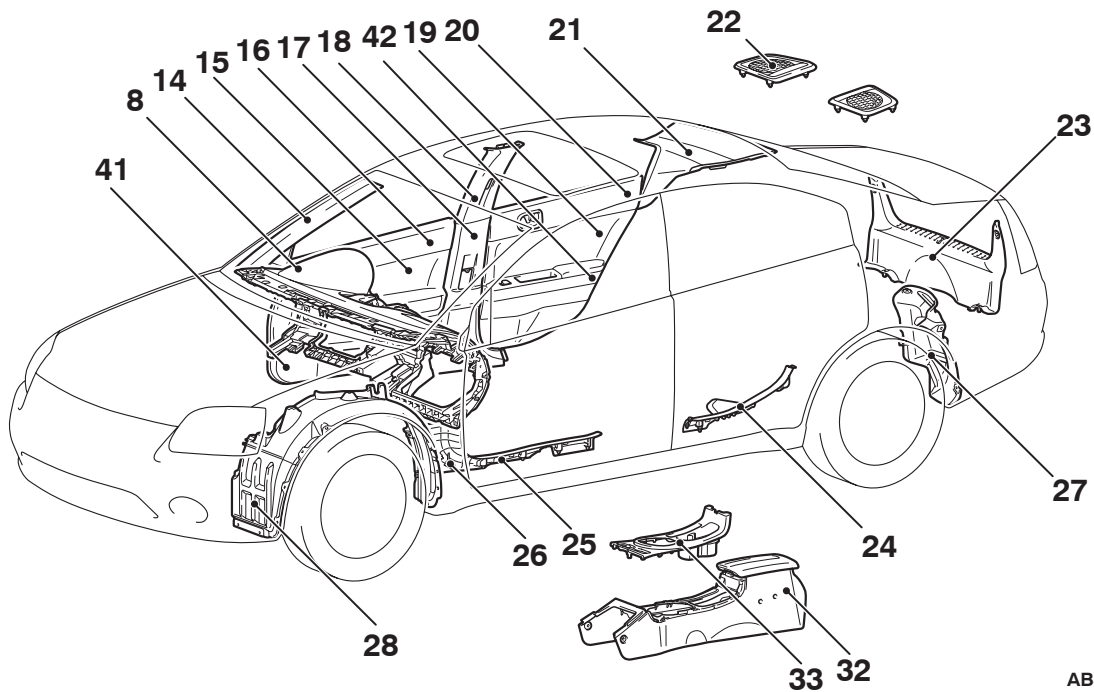
LOCATION OF SYNTHETIC-RESIN PARTS

M4050001000678

The location and material of each of the principal synthetic-resin parts are shown below.



AB501095AB



AB501054AB

No	Part name	Name of resin	Abbreviation	Heat-withstand temp (°C)
1	Radiator grille	Acrylonitrile butadiene styrene	ABS	80
2	Door mirror			
3	Rear air spoiler			
4	Rear door side protector moulding			
5	Front door side protector moulding			
6	Front delta garnish	Acrylonitrile styrene acrylate+ Polycarbonate	ASA+PC	90
7	Head lamp	Polycarbonate	PC	120
8	Instrument panel	Polycarbonate+ Acrylonitrile butadiene styrene	PC+ABS	100
9	Rear door outside handle	Polycarbonate+ Polyethylene terephthalate	PC+PET	120
10	Front door outside handle			
11	Rear bumper centre bracket	Polyacetal	POM	120
12	Rear bumper side bracket			
13	Inside rear view mirror	Polypropylene	PP	80
14	Front pillar trim			
15	Front door centre trim			
16	Front door upper trim			
17	Centre pillar lower trim			
18	Centre pillar upper trim			
19	Rear door centre trim			
20	Rear door upper trim			
21	Rear pillar trim			
22	rear speaker garnish			
23	Rear and trim cover			
24	Rear scuff plate			
25	Front scuff plate			
26	Cowl side trim			
27	Rear splash shield	Polypropylene	PP(BLACK)	80
28	Front splash shield			
29	Front bumper core	Polypropylene	PP(FOAM)	80
30	Rear bumper core			
31	Front bumper under cover	Talc filled polypropylene (15%)	PP-TD15	110 – 120
32	Base floor console	Talc filled polypropylene (20%)	PP-TD20	120 – 130
33	Upper panel			
34	Front deck garnish			
35	Front mudguard			
36	Fog hole cover			

No	Part name	Name of resin	Abbreviation	Heat-withstand temp (°C)
37	Fog lamp bezel	Talc filled polypropylene (20%)	PP-TD20	120 – 130
38	Front bumper under grille			
39	Front bumper face	Talc filled rubber modified polypropylene	PP+E/P-TD	80-100
40	Rear bumper face			
41	Front door lower trim	Talc filled rubber modified polypropylene (20%)	PP+E/P-TD20	110
42	Rear door lower trim			
43	Roof drip moulding	Polyvinyl chloride	PVC	70-90
44	Fender hole cover	Thermoplastic elastomer	TPE	80 – 100

NOTE:

- A slash (/) in the material symbol indicates that two different materials make two-layer construction. A plus sign (+) indicates that the two different materials mix each other.
- The indicated heat-withstand temperature for parts which are composed of two or more types of material is the value for the material with the lowest heat-withstand temperature.
- The material symbols for synthetic-resin parts are embossed on the parts in hidden places.