

GROUP 51

EXTERIOR

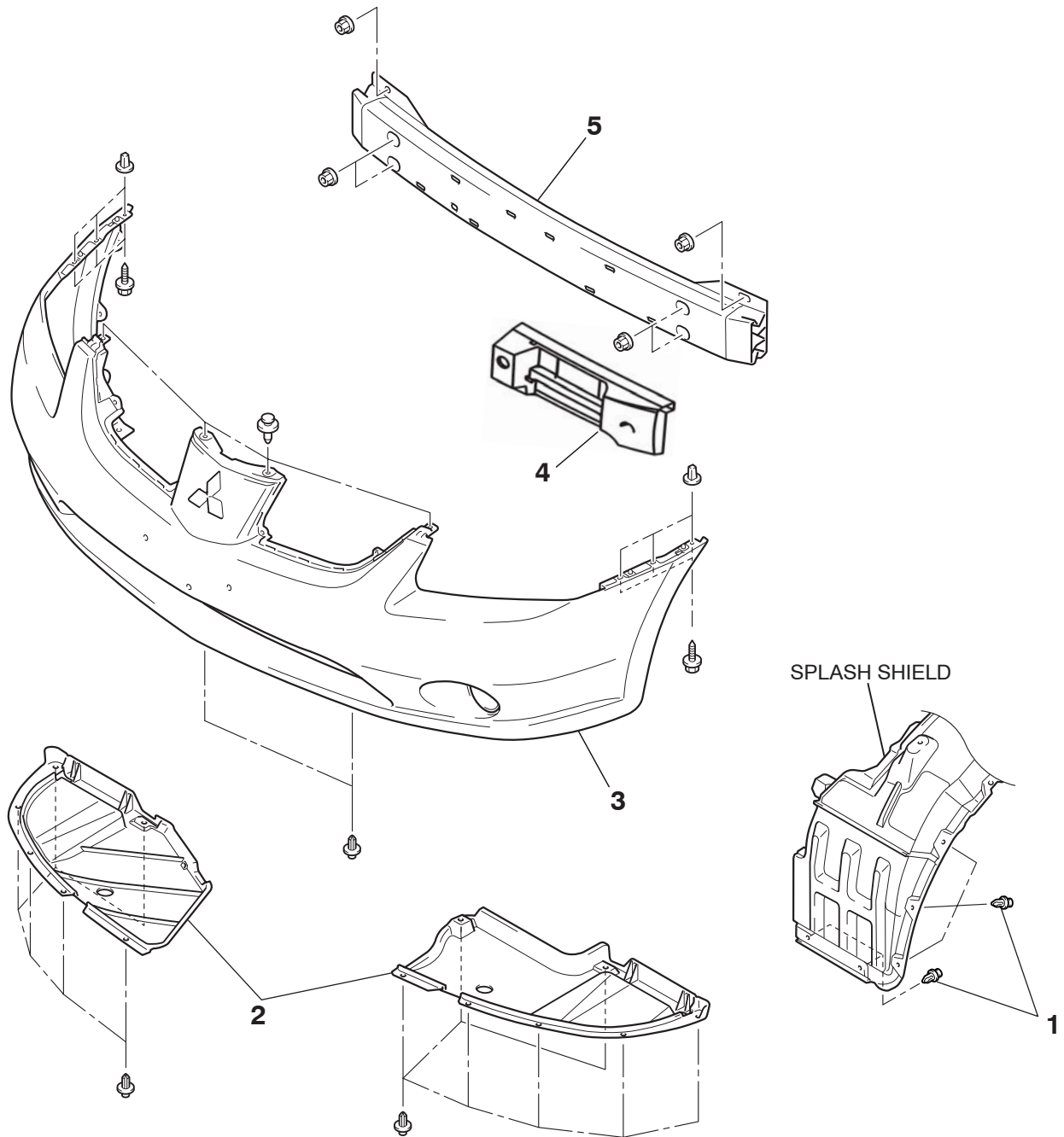
CONTENTS

FRONT BUMPER ASSEMBLY	51-2	DIAGNOSIS.....	51-14
REMOVAL AND INSTALLATION.....	51-2	SPECIAL TOOLS	51-15
DISASSEMBLY AND ASSEMBLY	51-3	ON-VEHICLE SERVICE	51-15
REAR BUMPER ASSEMBLY	51-5	WINDSHIELD INTERMITTENT WIPER VOLUME CHECK	51-15
REMOVAL AND INSTALLATION.....	51-5	WINDSHIELD WASHER FLUID EJECTION CHECK	51-16
RADIATOR GRILLE.....	51-6	WINDSHIELD WIPER.....	51-17
REMOVAL AND INSTALLATION.....	51-6	REMOVAL AND INSTALLATION	51-17
GARNISHES AND MOLDINGS.....	51-7	INSPECTION.....	51-20
SPECIAL TOOLS	51-7	WINDSHIELD WASHER.....	51-23
MOLDINGS.....	51-8	REMOVAL AND INSTALLATION	51-23
REMOVAL AND INSTALLATION.....	51-8	INSPECTION.....	51-24
REAR SPOILER.....	51-11	MARK	51-25
REMOVAL AND INSTALLATION.....	51-11	REMOVAL AND INSTALLATION	51-25
MUD GUARD.....	51-12	DOOR MIRROR	51-27
REMOVAL AND INSTALLATION.....	51-12	GENERAL DESCRIPTION	51-27
UNDER COVER.....	51-13	DOOR MIRROR	51-28
REMOVAL AND INSTALLATION.....	51-13	REMOVAL AND INSTALLATION	51-28
WINDSHIELD WIPER AND WASHER	51-14	INSPECTION.....	51-29
GENERAL DESCRIPTION.....	51-14	SPECIFICATIONS	51-31
WINDSHIELD WIPER AND WASHER		FASTENER TIGHTENING SPECIFICATIONS	51-31
		SERVICE SPECIFICATIONS	51-31
		ADHESIVE	51-31

FRONT BUMPER ASSEMBLY

REMOVAL AND INSTALLATION

M1511001400499



20DB121A

REMOVAL STEPS

- RADIATOR GRILLE (REFER TO [P.51-6](#)).
- 1. SPLASH SHIELD MOUNTING CLIPS
- 2. FRONT BUMPER UNDER COVER
- 3. FRONT BUMPER ASSEMBLY
- 4. FRONT BUMPER CORE, LH/RH

REMOVAL STEPS (Continued)

- FOG LAMP CONNECTOR CONNECTION
- 5. FRONT BUMPER REINFORCEMENT ASSEMBLY

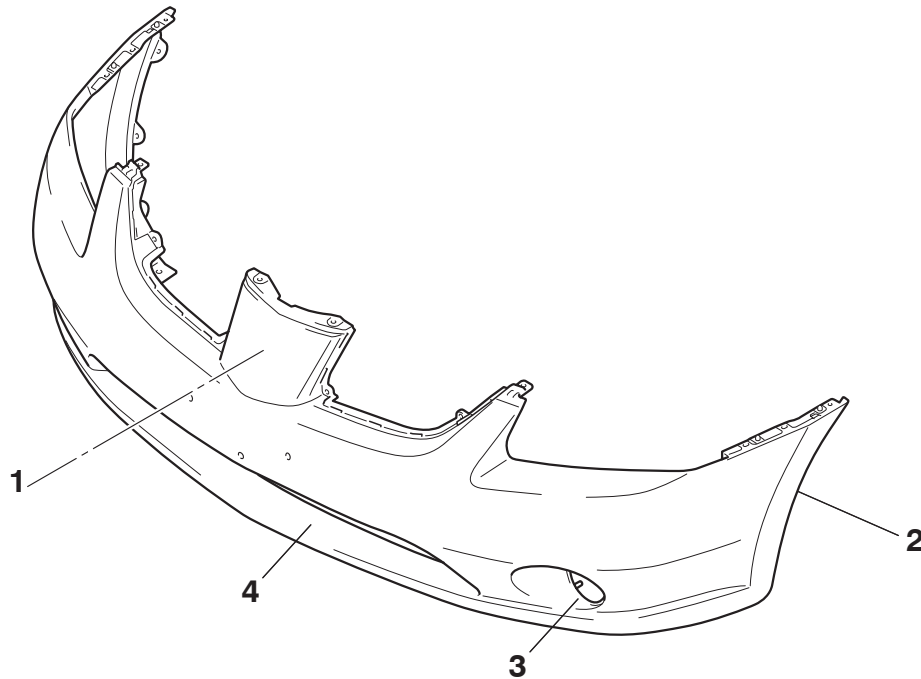
DISASSEMBLY STEPS

- FOG LAMP OR COVER (REFER TO GROUP 54A [P.54A-159](#))
- 7. LOWER GRILLE

<<A>> >>A<<

DISASSEMBLY AND ASSEMBLY

M1511001600493



DISASSEMBLY STEPS

1. GRILLE, RADIATOR (REFER TO GROUP 51 [P.51-6](#))
2. FRONT BUMPER FACE

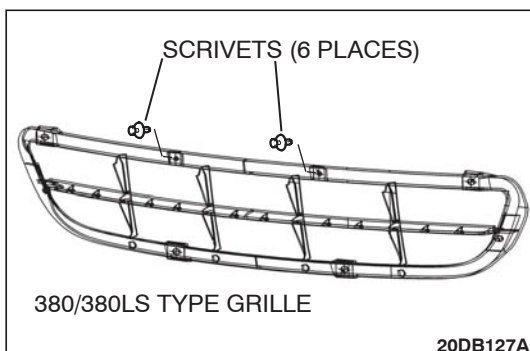
DISASSEMBLY STEPS (Continued) 20DB124A

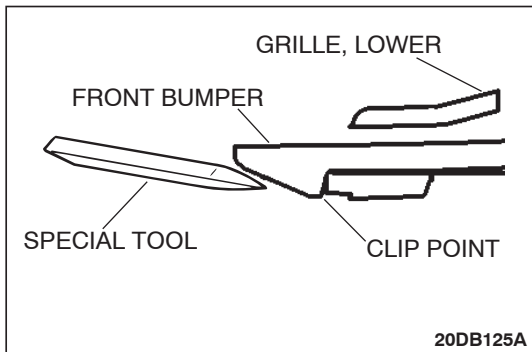
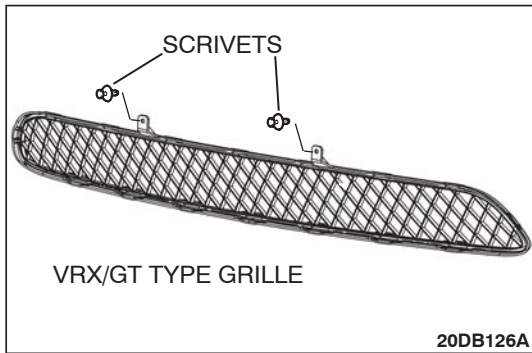
3. FOG LAMP OR COVER (REFER TO GROUP 54A [P.54A-159](#))
4. GRILLE, LOWER ASSEMBLY

REMOVAL SERVICE POINTS

<<A>> LOWER GRILLE ASSEMBLY REMOVAL

1. Ensure that the front bumper surface around grille is clean and free of any foreign material to prevent damaging paint surface during grille removal.
2. Remove the attaching scrivets from bumper. The 380 and 380LS models grille lower is attached by scrivets only. For VRX and GT models use step 3 in removal process.



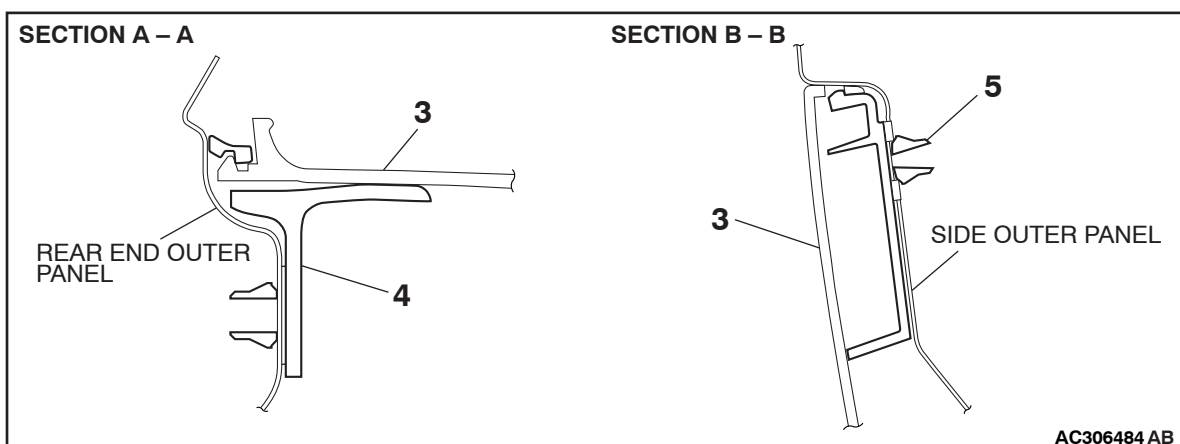
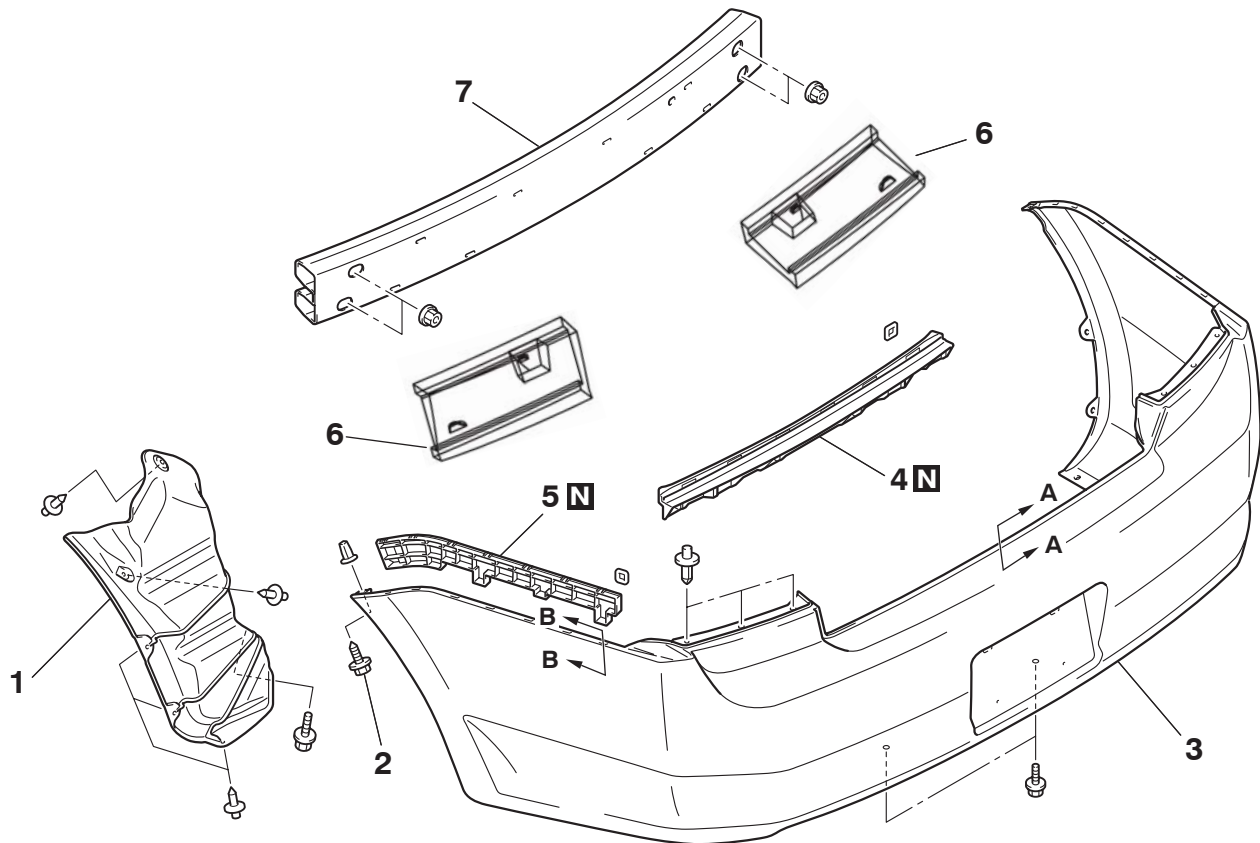


3. For VRX and GT models, using Special Tool MB990784 or similar. Insert the tool carefully into each bumper locating clip point and release the grille from bumper.
4. Carefully remove the grille from bumper and avoid any paint damage.

REAR BUMPER ASSEMBLY

REMOVAL AND INSTALLATION

M1511001900427



20DB122A

AC306484 AB

REMOVAL STEPS

- REAR COMBINATION LIGHT
(REFER TO GROUP 54A, REAR
COMBINATION LIGHT [P.54A-161](#)).
- REAR END TRIM REFER TO
GROUP 52A, TRIMS [P.52A-11](#)).
- 1. REAR SPLASH SHIELD

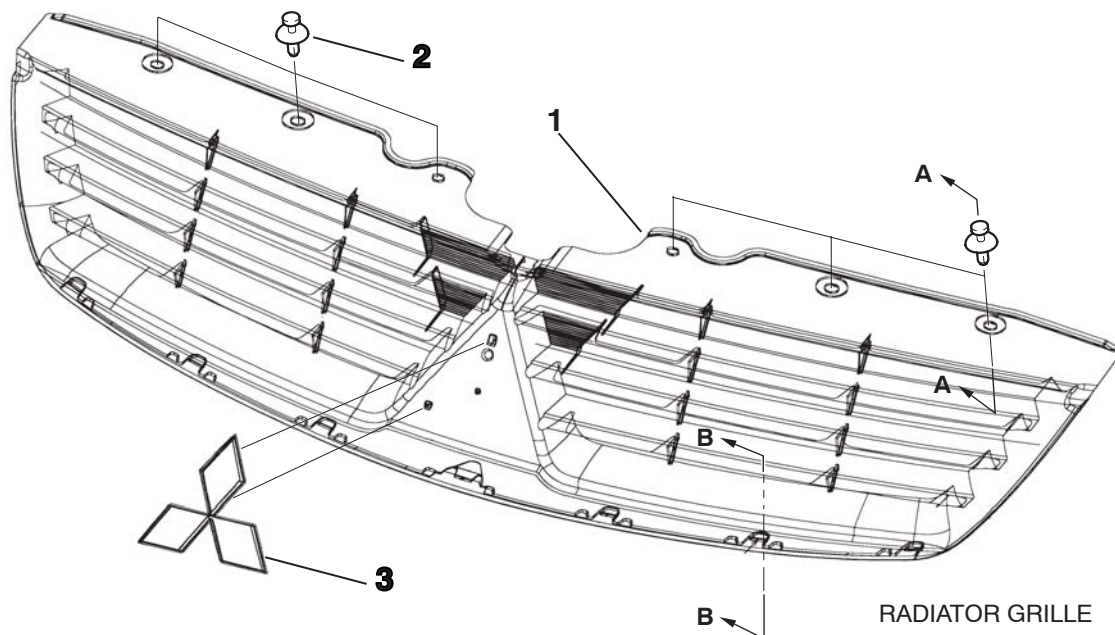
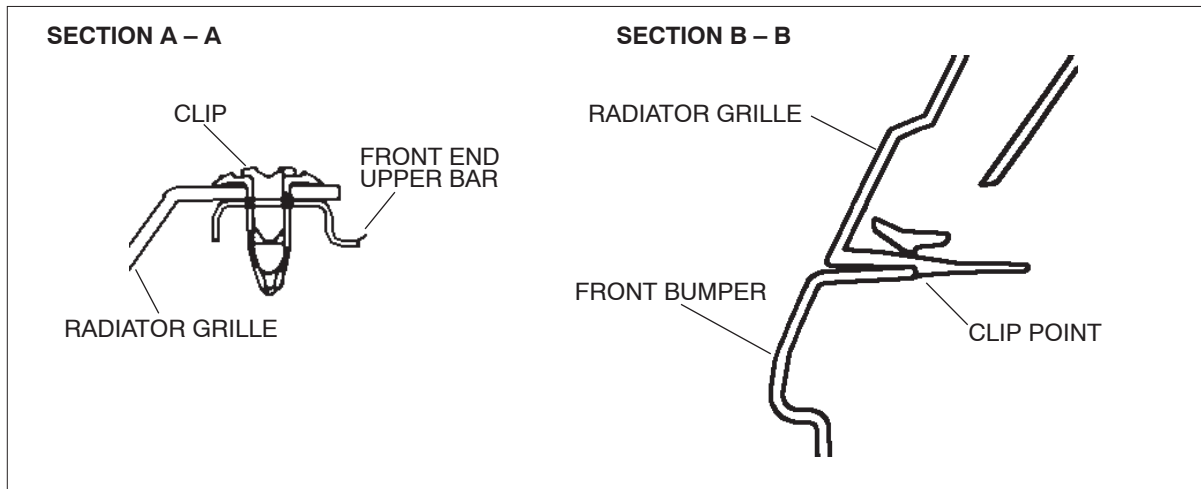
REMOVAL STEPS (Continued)

- 2. TAPPING SCREW
- 3. REAR BUMPER ASSEMBLY
- 4. REAR BUMPER CENTER BRACKET
- 5. REAR BUMPER SIDE BRACKET
- 6. REAR BUMPER CORES, LH/RH
- 7. REAR BUMPER REINFORCEMENT

RADIATOR GRILLE

REMOVAL AND INSTALLATION

M1511002900237



<<A>>

REMOVAL STEPS

1. RADIATOR GRILLE
2. SCRIVETS
3. FRONT THREE-DIAMOND MARK
(REFER TO [P.51-25](#))

Required Special Tools:

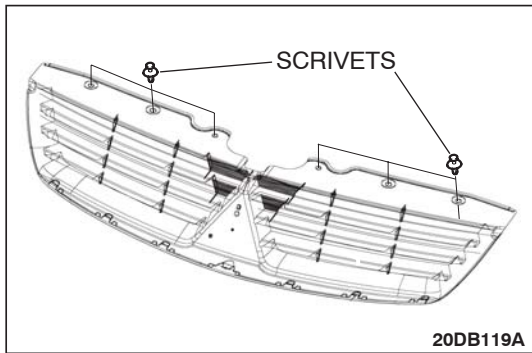
- MB990784: Ornament Remover

20DB118A

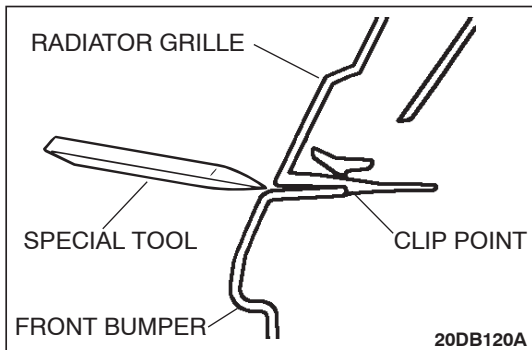
REMOVAL SERVICE POINTS

<<A>> RADIATOR GRILLE ASSEMBLY REMOVAL

Ensure that the front bumper surface around grille is clean and free of any foreign material to prevent damaging paint surface during grille removal.



1. Open the engine hood and remove the 6 attaching scrivenets from the top edge of grille.

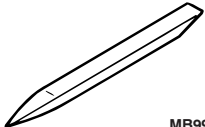


2. Using Special Tool MB990784 or similar. Insert the tool between the top surface of the bumper and lower edge of the grille at each clipping point and release grille lower side.
3. Carefully remove the grille from bumper and avoid any paint damage.

GARNISHES AND MOLDINGS

SPECIAL TOOLS

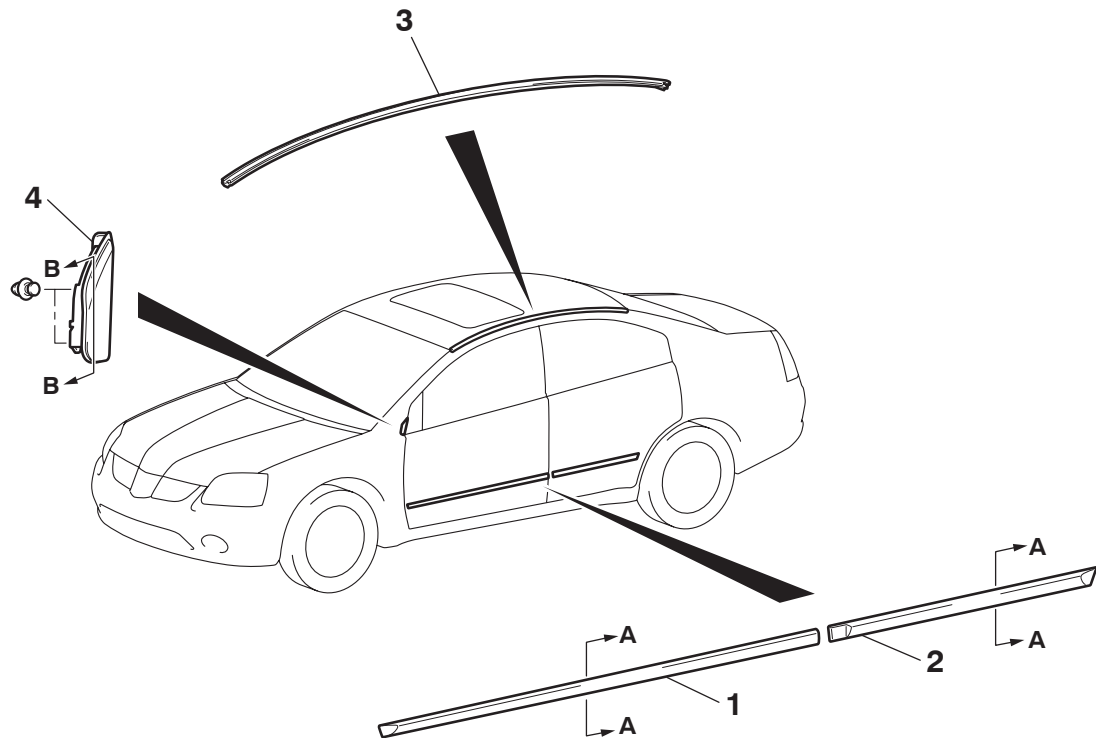
M1511000601158

TOOL	TOOL NUMBER AND NAME	SUPERSESSION	APPLICATION
 <p>MB990784</p>	MB990784 Ornament remover	General service tool	Side protector molding Roof drip molding

MOLDINGS

REMOVAL AND INSTALLATION

M1511004700165



AC306486 AB

REMOVAL

- <<A>> >>A<< 1. FRONT DOOR SIDE PROTECTOR MOLDING
- <<A>> >>A<< 2. REAR DOOR SIDE PROTECTOR MOLDING

ROOF DRIP MOLDING REMOVAL STEPS

- <<A>> >>A<< 3. ROOF DRIP MOLDING

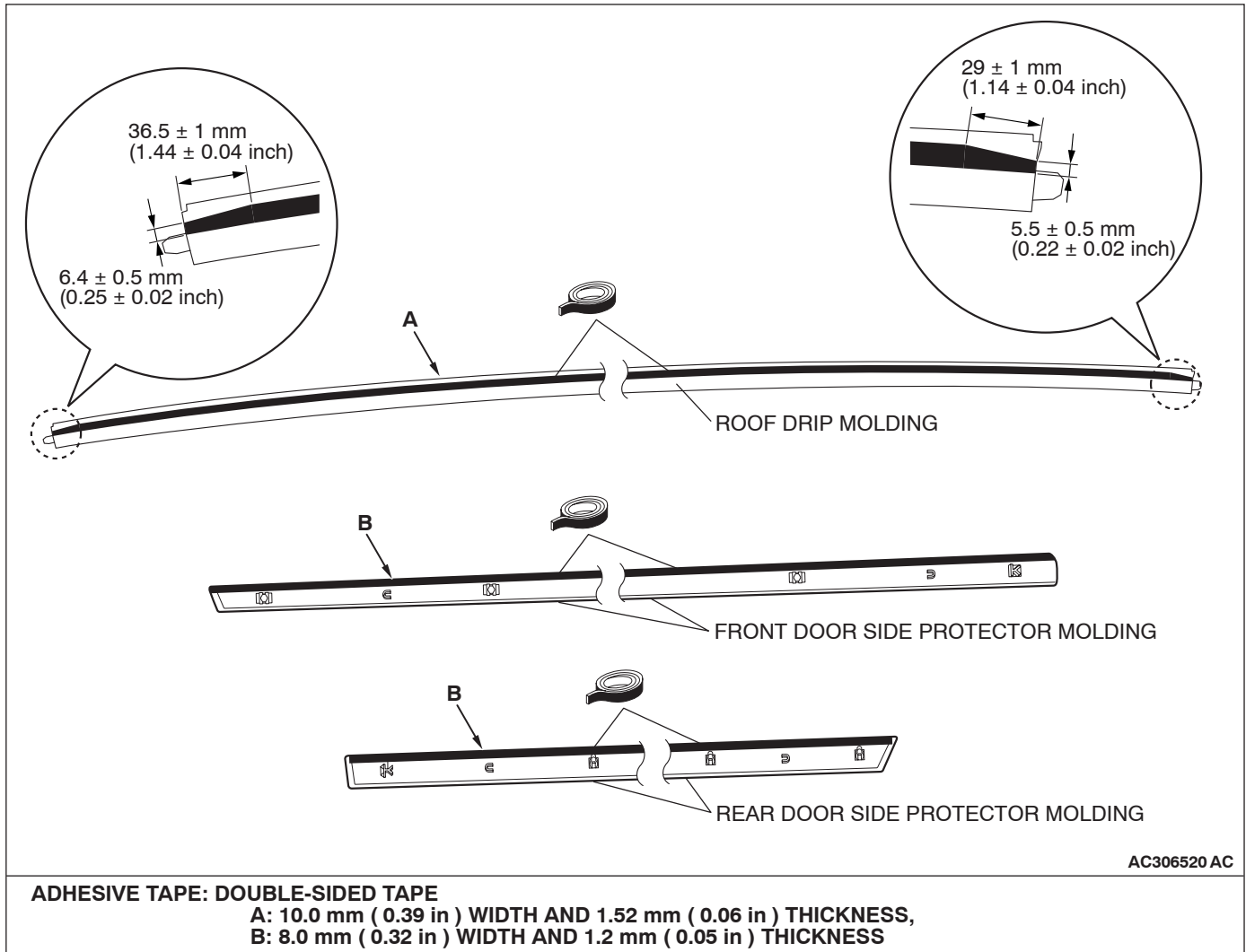
FRONT DELTA GARNISH REMOVAL STEPS

4. FRONT DELTA GARNISH

Required Special Tools:

- MB990784: Ornament Remover

ADHESIVE TAPE POSITION



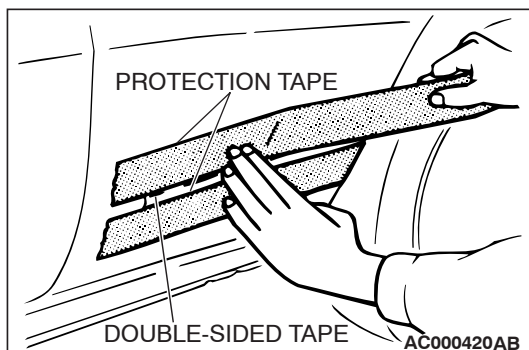
REMOVAL SERVICE POINTS

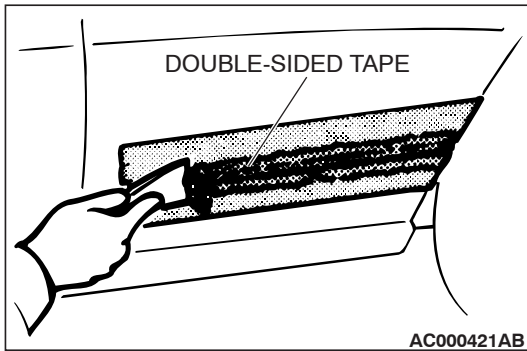
<<A>> SIDE PROTECTOR MOLDING/ROOF DRIP MOLDING REMOVAL

Gently lift and remove the side protector molding/roof drip molding. If there is any double-sided tape remaining on the side protector molding, remove according to the following instructions.

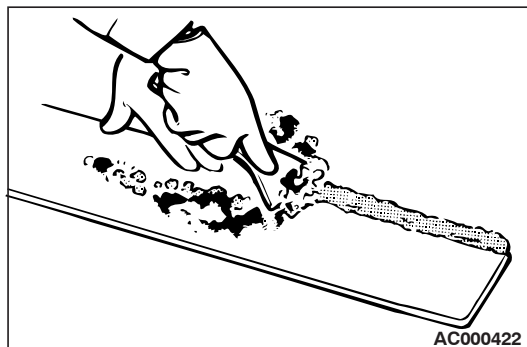
<Remove double-sided tape remaining on the body surface>

1. Attach protection tape all the way along the edges of the double-sided tape which is still adhering to the body.





2. Scrape off the double-sided tape with a resin spatula as much as possible.
3. Peel off the protection tape.
4. Use a shop towel moistened with 3M™ AAD Part number 8906 or equivalent to wipe the body.

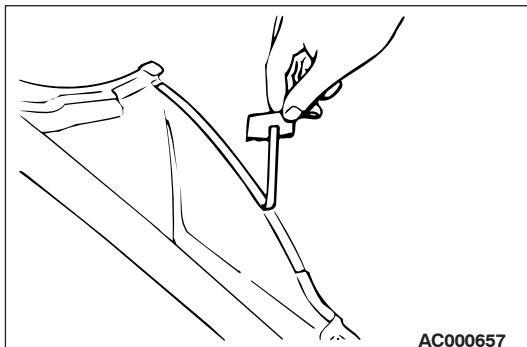


<Remove double-sided tape remaining on SIDE PROTECTOR MOLDING/ROOF DRIP MOLDING and adhere double-sided tape (when re-using SIDE PROTECTOR MOLDING/ROOF DRIP MOLDING)>

1. Scrape off the double-sided tape on the side protector molding with a resin spatula as much as possible.
2. Use a shop towel moistened with 3M™ AAD Part number 8906 or equivalent to wipe the side protector molding surface.
3. Remove only a small portion of the residual adhesive.
4. Apply primer to adherence area of the side protector molding, then adhere the double-sided tape as specified on the side protector molding (Refer to double-sided tape adherence location).

INSTALLATION SERVICE POINT

>>A<< SIDE PROTECTOR MOLDING/ROOF DRIP MOLDING INSTALLATION.

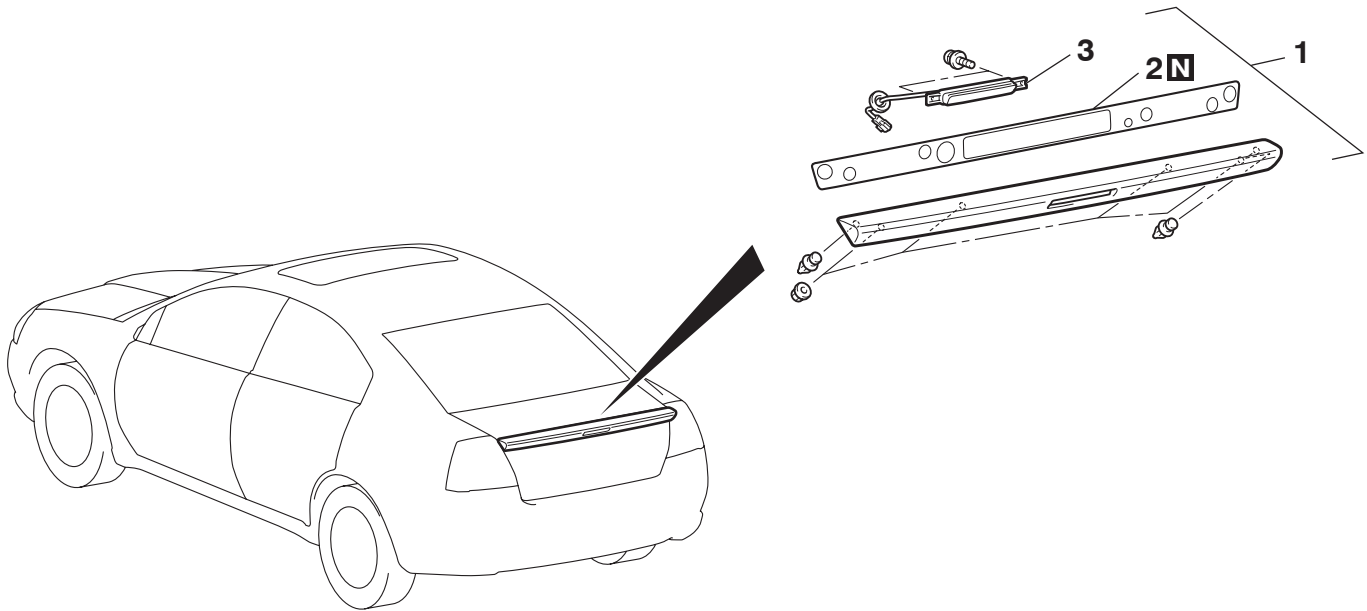


1. Tear off the double-sided tape backing paper.
NOTE: If you attach the adhesive tape to the edge of the backing paper, it will be easy to tear off.
2. Install the side protector molding/roof drip molding.
NOTE: If the double-sided tape is difficult to affix in cold temperature, etc., warm the bonding surfaces of the body and side protector molding to about 40 – 60°C (104 – 140°F) before affixing the tape.
3. Firmly press in the side protector molding.

REAR SPOILER

REMOVAL AND INSTALLATION

M1511006100147



AC306525 AB

REMOVAL STEPS

- TRUNK LID BUMPER (REFER TO GROUP 42, TRUNK LID [P.42-63](#)).
1. REAR SPOILER ASSEMBLY

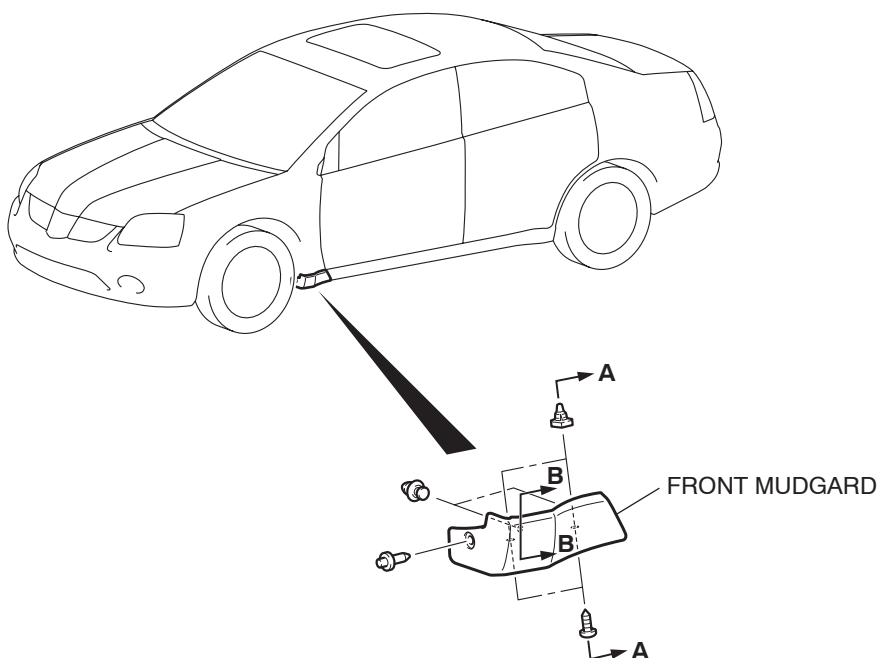
REMOVAL STEPS (Continued)

- 2 PACKING
- 3 HIGH-MOUNTED STOPLIGHT (REFER TO GROUP 54A, HIGH-MOUNTED STOPLIGHT [P.54A-166](#)).

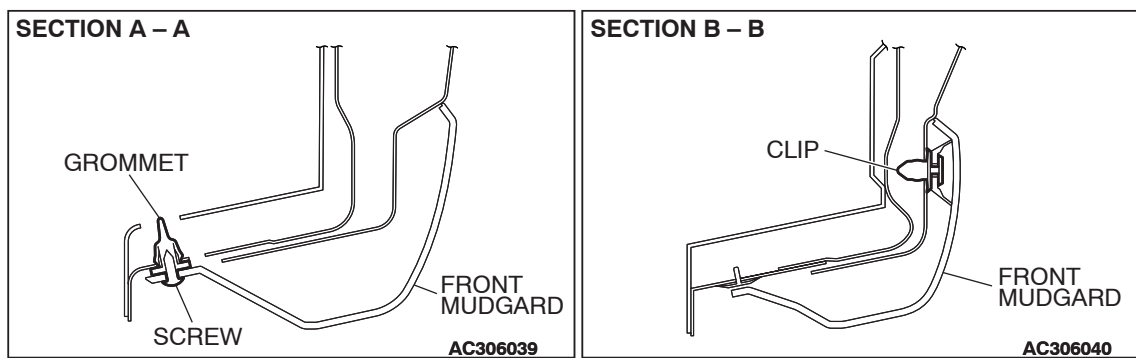
MUD GUARD

REMOVAL AND INSTALLATION

M1511011200065



AC306037 AB



AC306470 AB

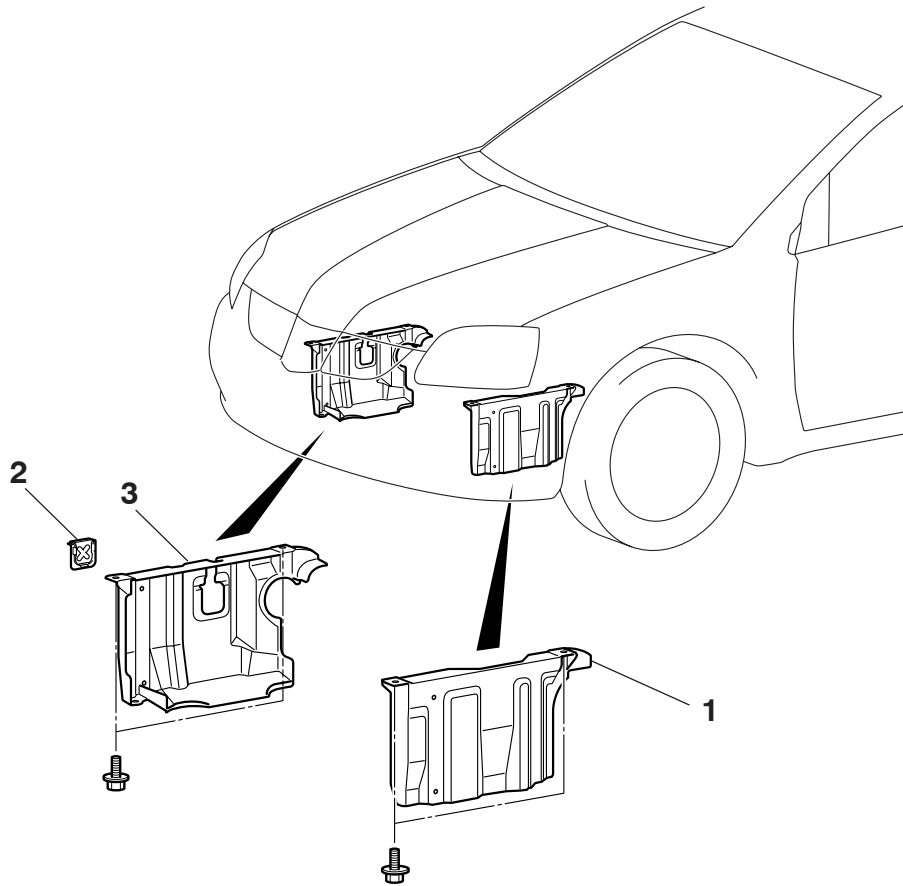
Required Special Tools:

- MB990784: Ornament Remover

UNDER COVER

REMOVAL AND INSTALLATION

M1511019600119



AC306125 AB

REMOVAL STEPS

- FRONT BUMPER UNDER COVER
(REFER TO [P.51-2](#)).
1. SIDE UNDER COVER (LH)

REMOVAL STEPS (Continued)

2. PLUG
3. SIDE UNDER COVER (RH)

WINDSHIELD WIPER AND WASHER

GENERAL DESCRIPTION

M1511000100558

WINDSHIELD WIPER AND WASHER OPERATION

WINDSHIELD LOW-SPEED (AND HIGH-SPEED) WIPER OPERATION

- If the windshield low-speed wiper switch is turned to the ON position with the ignition switch at the "ACC" or "ON" position, the column switch sends a low-speed wiper ON and high-speed wiper OFF signals to the front-ECU. This turns the wiper signal on and the wiper speed control relay off (low-speed), causing the wipers to operate at low-speed.
- If the windshield high-speed wiper switch is turned to the ON position, the column switch sends a low-speed wiper OFF and high-speed wiper ON signals to the front-ECU. This turns both the wiper signal and the wiper speed control relay on (high-speed), causing the wipers to operate at high-speed.

NOTE: The windshield wiper speed is adjustable with the built-in wiper speed control relay. High-speed operations take place when the wiper speed control relay is set to "ON" and low-speed operations take place when the wiper speed control relay is set to "OFF".

WINDSHIELD INTERMITTENT WIPER OPERATION

The ETACS-ECU calculates the wiper operation interval according to the voltage signal sent from the column switch. Then the ETACS-ECU sends a signal to the front-ECU. The front-ECU determines the wiper operation interval and turns on the wiper relay signal relay. This causes the wiper auto stop relay to turn on. Then the wiper auto stop relay will turn off after the wipers reach the park position. This causes the wiper signal relay and then the wipers to turn off. If the wiper signal relay remains off for the wiper operation interval, the relay turns on again, causing the wipers to operate in intermittent mode.

WINDSHIELD WIPER AND WASHER DIAGNOSIS

M1511000700389

The windshield wiper and washer are controlled by the Simplified Wiring System (SWS). For troubleshooting, refer to GROUP 54B, SWS Diagnosis [P.54B-10](#).

WINDSHIELD MIST WIPER OPERATION

- If the windshield mist wiper switch is turned to the ON position with the ignition switch at the "ACC" or "ON" position, the mist wiper high-speed operation signal is sent to the front-ECU. This signal turns on the wiper speed control relay, causing the wipers to work at high-speed while the mist switch is on.
- While the windshield mist wiper switch remains turned on when the intermittent mode is still working, the wipers work as the mist wiper. However, the wipers return to the intermittent mode again when the switch is changed back to "INT" position.
- To prevent the windshield mist wiper from operating when the windshield wiper switch is turned OFF, the windshield mist wiper does not work for 0.5 second after the windshield intermittent wiper switch, the windshield low-speed wiper switch and the windshield high-speed wiper switch are turned OFF.

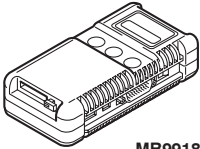
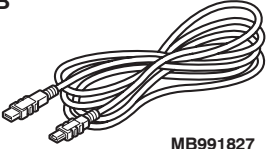
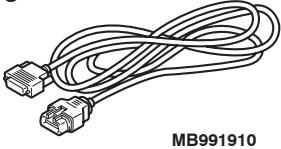
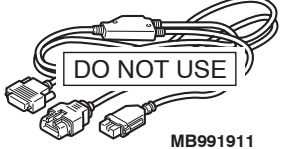

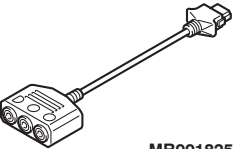
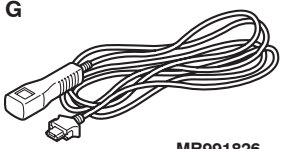
WINDSHIELD WASHER OPERATION

- If the windshield washer switch is turned to the ON position with the ignition switch at "ACC" or "ON" position, the windshield washer ON signal is sent to the front-ECU. After 0.3 second, the windshield wiper signal turns on. After the windshield washer switch signal turns off, the windshield wiper signal turns off in three seconds.
- If the windshield washer switch is turned on while the windshield wiper is at intermittent mode, and the windshield washer switch is turned OFF within 0.2 second, the wiper works only once to perform mist operation. When the windshield washer switch is turned on for more than 0.2 second, the wiper performs the same movement as normal condition from the time when 0.2 second has elapsed, and then returns to intermittent operation.

NOTE: Even when the ETACS-ECU has failed, the windshield wiper can work at low speed as fail-safe mode. (Normally, the windshield wiper operates when the ignition switch is at the "ACC" position. But, if it enters the fail-safe mode, the wiper can operate only when the ignition switch is at the "ON" position.)

SPECIAL TOOLS

M1511000601170

TOOL	TOOL NUMBER AND NAME	SUPERSESSION	APPLICATION
<p>A</p>  <p>MB991824</p> <p>B</p>  <p>MB991827</p> <p>C</p>  <p>MB991910</p> <p>D</p>  <p>MB991911</p> <p>E</p>  <p>MB991914</p> <p>F</p>  <p>MB991825</p> <p>G</p>  <p>MB991826 MB991958</p>	<p>Diagnostic Tool</p> <p>A: MB991824 B: MB991827 C: MB991910 D: MB991911 E: MB991914 F: MB991825 G: MB991826</p> <p>MUT-III sub assembly</p> <p>A: Vehicle Communication Interface (V.C.I.)</p> <p>B: MUT-III USB Cable</p> <p>C: MUT-III Main Harness A (Vehicles with CAN communication system)</p> <p>D: MUT-III Main Harness B (Vehicles without CAN communication system)</p> <p>E: MUT-III Main Harness C (for Chrysler models only)</p> <p>F: MUT-III Adapter Harness</p> <p>G: MUT-III Trigger Harness</p>		<p>Windshield intermittent wiper check</p> <p>⚠ CAUTION</p> <p>For vehicles with CAN communication, use MUT-III main harness A to send simulated vehicle speed. If you connect MUT-III main harness B instead, the CAN communication does not function correctly.</p>

ON-VEHICLE SERVICE

WINDSHIELD INTERMITTENT WIPER VOLUME CHECK

M1511018900043

Required Special Tools:

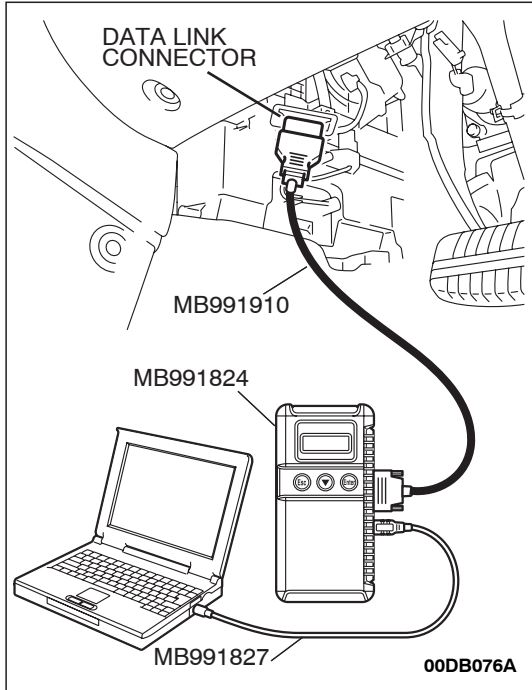
- : Diagnostic Tool (MUT-III Sub Assembly)
 - MB991824: Vehicle Communication Interface (V.C.I.)
 - MB991827: MUT-III USB Cable
 - MB991910: MUT-III Main Harness A

If the windshield intermittent wiper interval control is operated, the wiper interval should change.

⚠ CAUTION

To prevent damage to diagnostic tool, always turn the ignition switch to the "LOCK" (OFF) position before connecting or disconnecting.

1. Connect diagnostic tool to the data link connector.
2. Turn the ignition switch to the "ON" position.
3. Operate diagnostic tool according to the procedure below to display "Simulated Vehicle Speed Output."
 - (1) Select "SYSTEM SELECT."
 - (2) Select "SWS."
 - (3) Select "Simulated Vehicle Speed Output."
4. Holding the windshield intermittent wiper interval control, input the simulated vehicle speed with diagnostic tool and check that the wiper interval changes as the vehicle speed changes.
5. If not, carry out the troubleshooting (Refer to GROUP 54B, SWS Diagnosis [P.54B-57](#)).

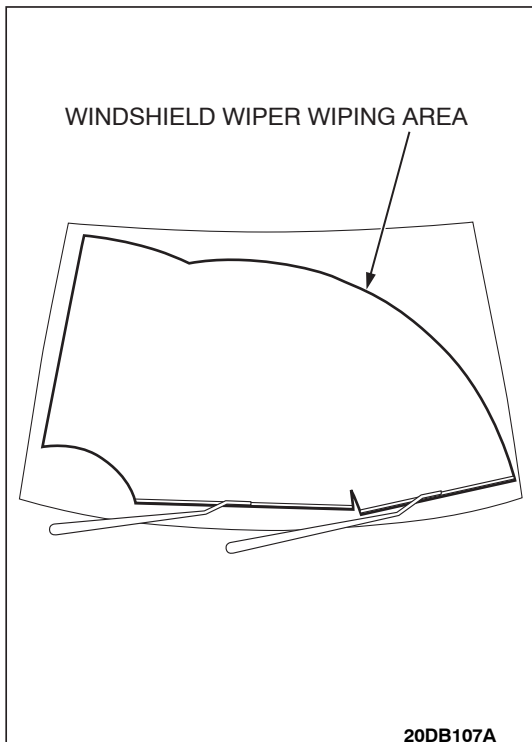


WINDSHIELD WASHER FLUID SPRAY CHECK

M1511018400060

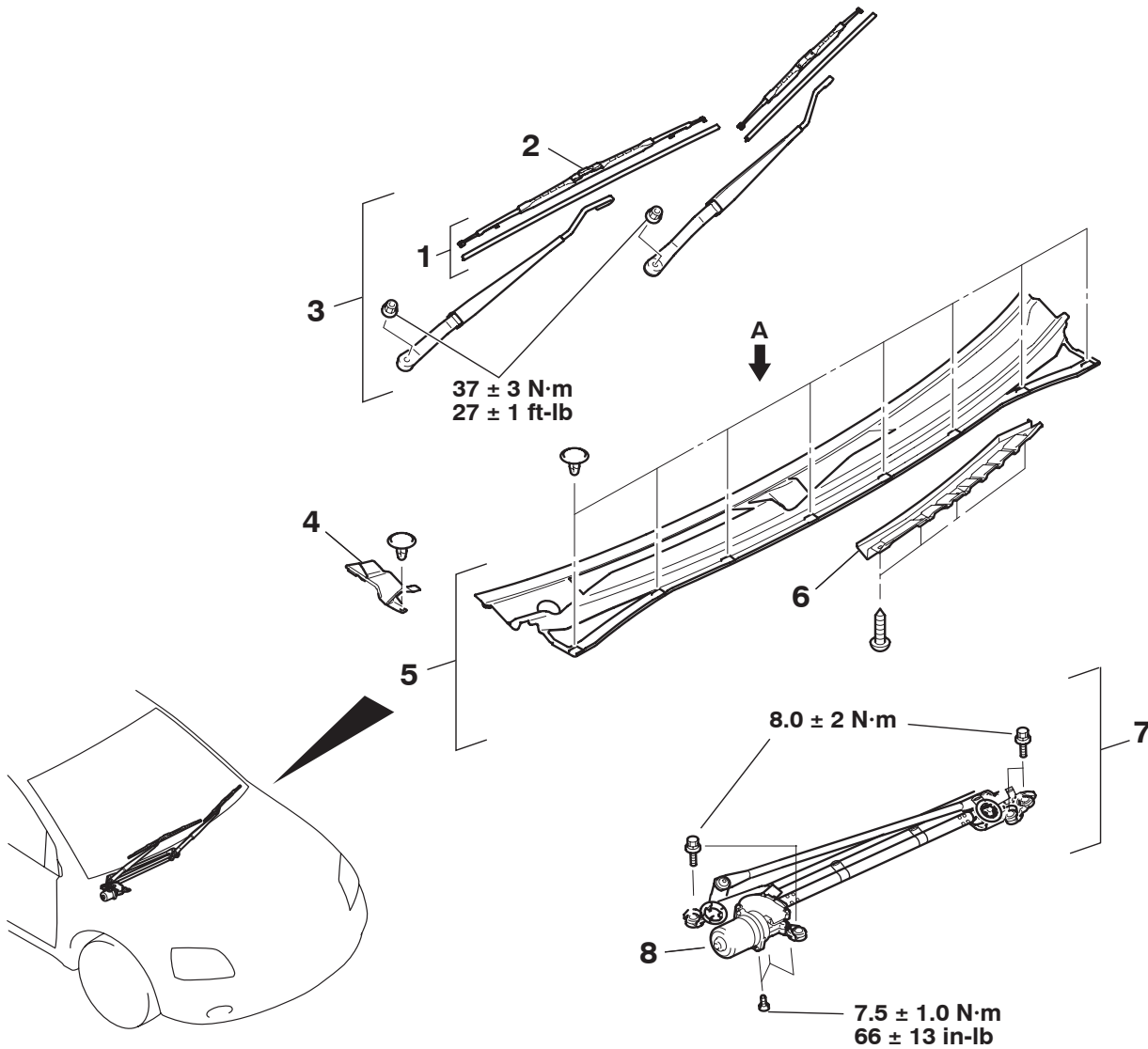
The windshield washer nozzle aiming cannot be adjusted. If the washer nozzles do not spray washer fluid within the windshield wiper wiping area, check the nozzles as follows:

1. Check that the windshield washer nozzles are fitted on the hood correctly, and reinstall them if necessary.
2. If the windshield washer nozzles are damaged, replace them (Refer to [P.51-23](#)).



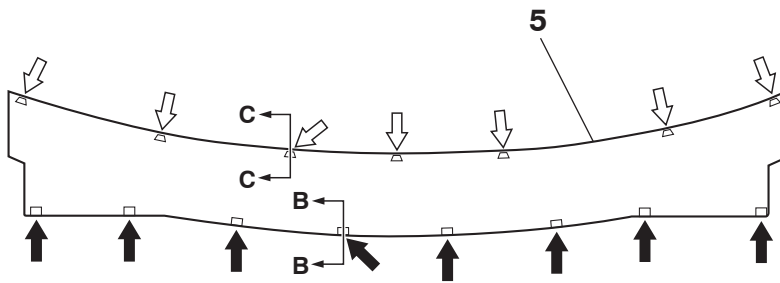
WINDSHIELD WIPER
REMOVAL AND INSTALLATION

M1511007900168



20DB110A

VIEW A



NOTE

➡ : CLIP POSITION ➡ : CLAW POSITION

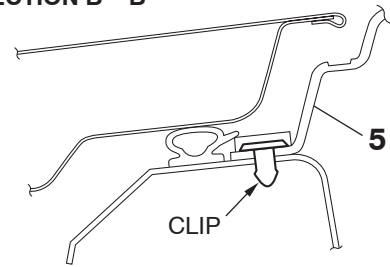
WIPER BLADE REMOVAL STEPS

- >>B<< 1. WIPER BLADE ASSEMBLY
- >>B<< 2. WIPER BLADE RUBBER
- >>A<< 3. WIPER ARM AND BLADE ASSEMBLY

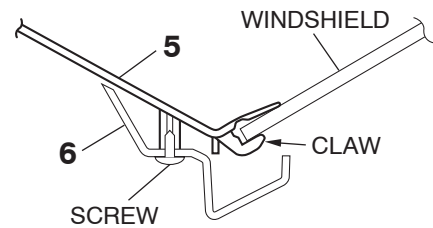
WINDSHIELD WIPER MOTOR AND LINK ASSEMBLY REMOVAL STEPS

- 4. FENDER HOLE COVER
- 5. FRONT DECK GARNISH ASSEMBLY

SECTION B – B



SECTION C – C



AC306703 AB

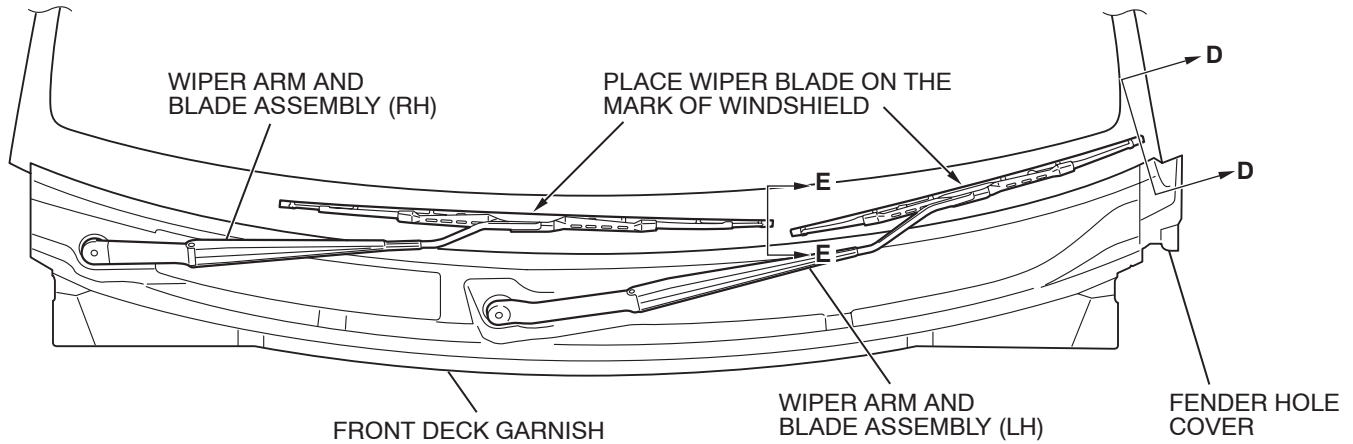
WINDSHIELD WIPER MOTOR AND LINK ASSEMBLY REMOVAL STEPS

- 6. GUTTER
- 7. WINDSHIELD WIPER MOTOR AND LINK ASSEMBLY
- 8. MOTOR

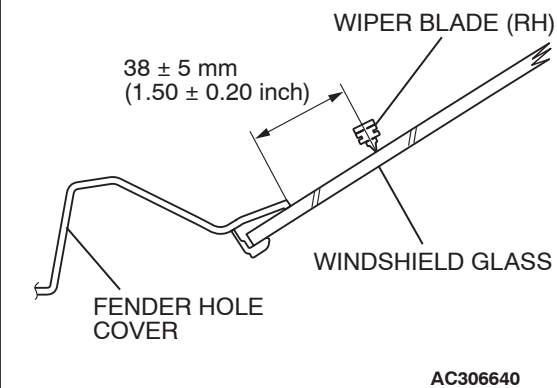
NOTE: For removal and installation of the wiper and washer switch, refer to GROUP 54A, Column switch P.54A-170.

INSTALLATION SERVICE POINTS

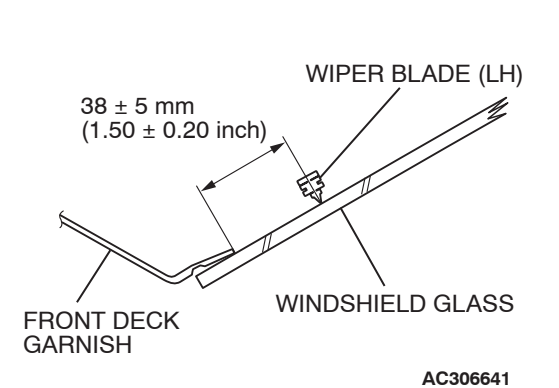
>>A<< WIPER ARM AND BLADE ASSEMBLY
INSTALLATION



SECTION D - D



SECTION E - E

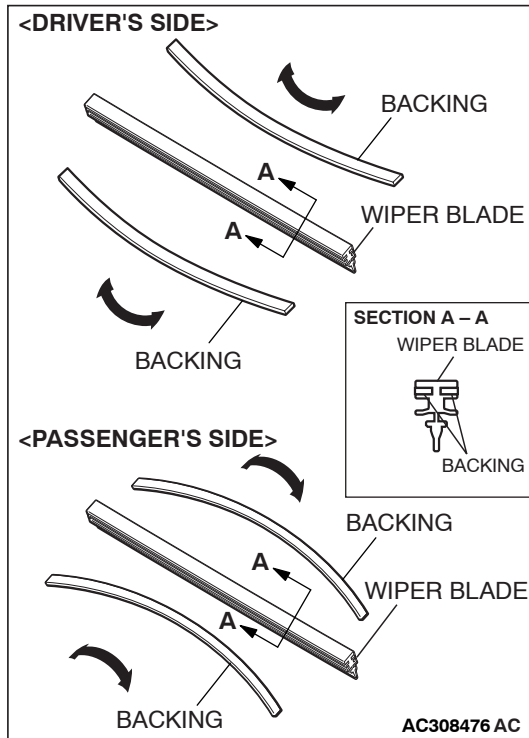


Install the wiper blade at the position specified above. ^{20DB109A}

>>B<< WIPER BLADE RUBBER/ WIPER BLADE ASSEMBLY INSTALLATION

CAUTION

Ensure that the backings are bent in the direction indicated, and then install the backings to the wiper blade rubber.



INSPECTION

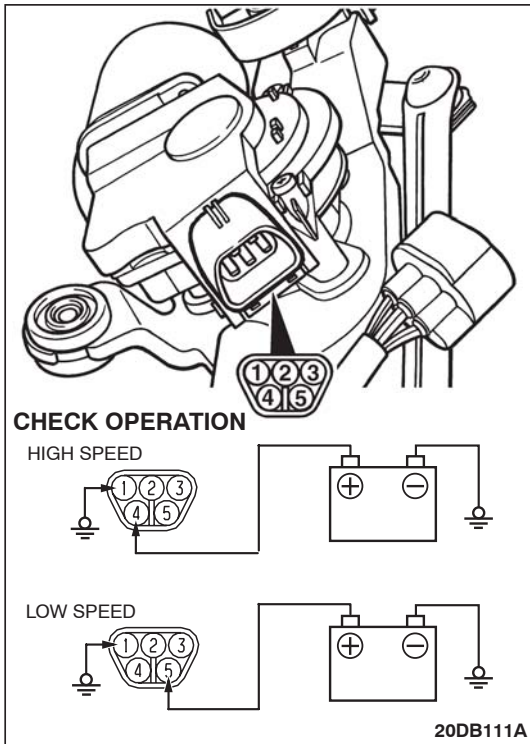
M1511008000146

WINDSHIELD WIPER MOTOR CHECK

Inspect the windshield wiper motor by removing the harness connector with the motor attached to the vehicle.

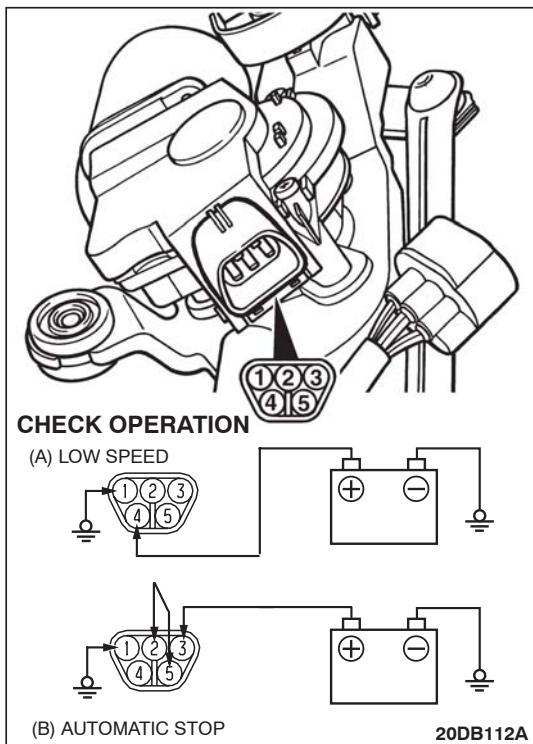
Wiper Motor at Low-Speed and High-Speed Operation

Connect the battery to the windshield wiper motor to inspect the operation of motor rotation in low or high speed.



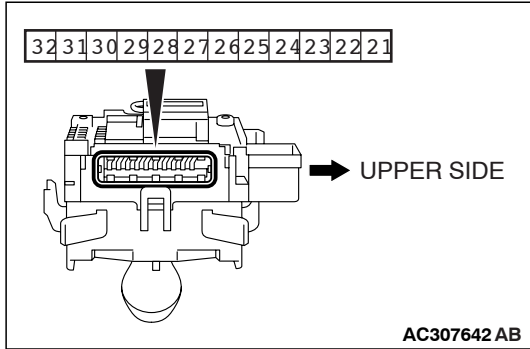
Wiper Motor at Stop Position Operation

1. Connect the battery to the windshield wiper motor as shown in the illustration (A).
2. Run the windshield wiper motor at low speed, then disconnect the battery in the middle of the motor turning and check to see that the motor stops.
3. As shown in the illustration (B), connect the terminals of the windshield wiper motor connectors.
4. Check to see that the windshield wiper motor runs at low speed and then stops at the automatic stop position.



WINDSHIELD WIPER SWITCH CHECK

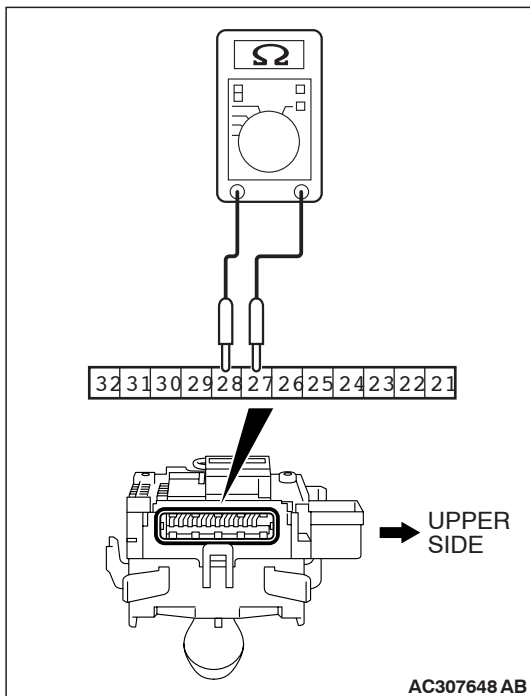
Check continuity between the switch terminals.



SWITCH POSITION	TESTER CONNECTION	SPECIFIED CONDITION
OFF	23 – 32, 23 – 31, 23 – 30, 23 – 21	Open circuit
Windshield mist wiper switch	23 – 32	Less than 2 ohms
Windshield intermittent wiper switch	23 – 31	
Windshield low-speed wiper switch	23 – 30	
Windshield high-speed wiper switch	21 – 23	

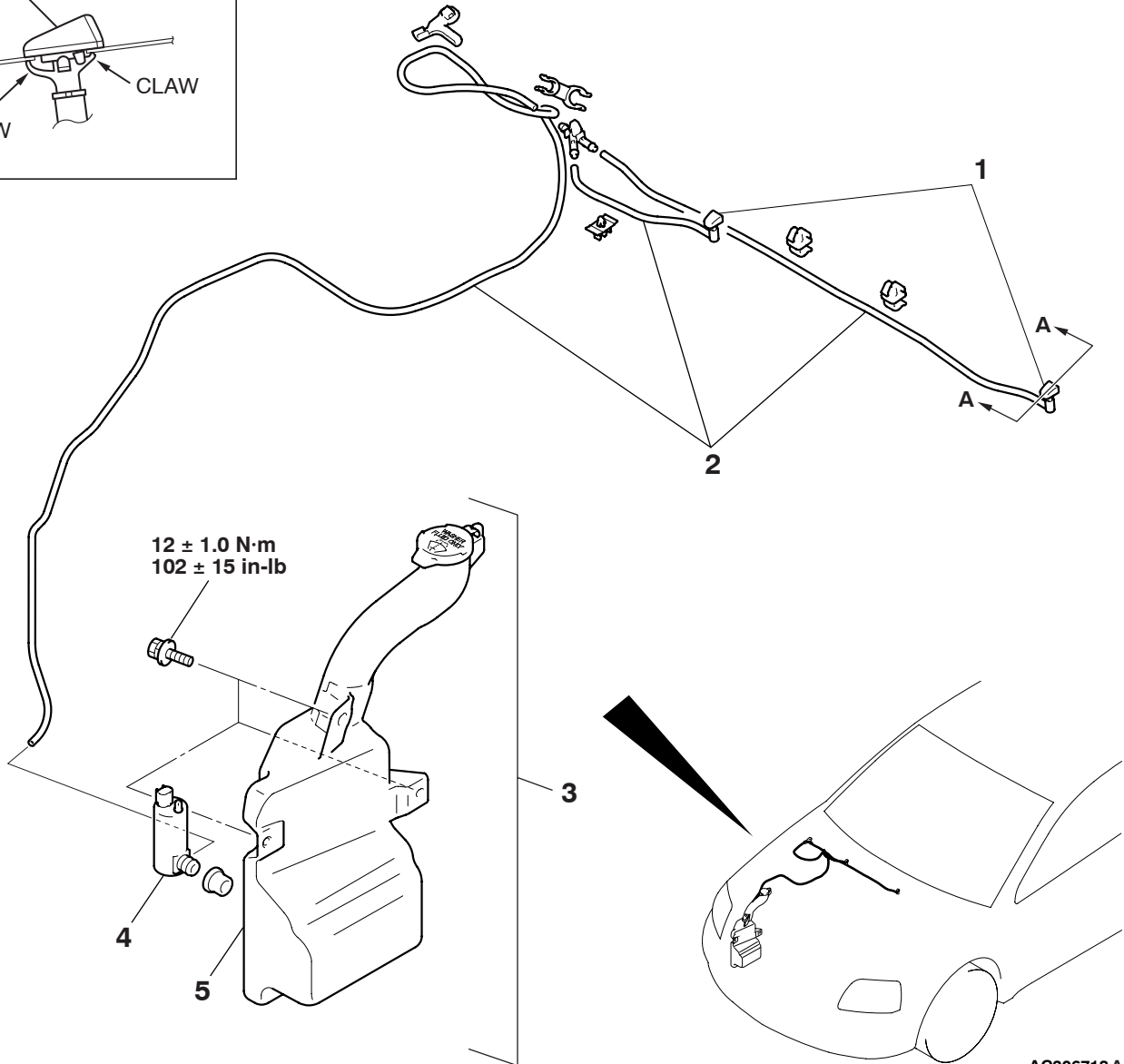
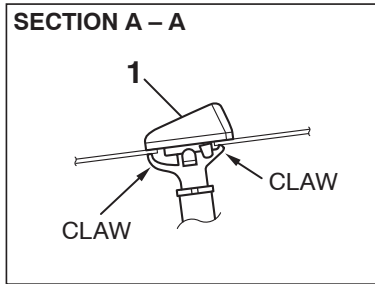
WINDSHIELD INTERMITTENT WIPER INTERVAL CHECK

Check that the resistance varies between 0 and 1 kilohm when the windshield intermittent interval is turned from FAST to SLOW by after measuring resistance between connector terminals 27 and 28 at the column switch.



WINDSHIELD WASHER REMOVAL AND INSTALLATION

M1511008200270



AC306718 AB

WINDSHIELD WASHER NOZZLE REMOVAL STEPS

- WINDSHIELD WASHER HOSE CONNECTION
- 1. WINDSHIELD WASHER NOZZLE

WASHER HOSE REMOVAL STEPS

- WINDSHIELD WASHER NOZZLE CONNECTION
- 2. WINDSHIELD WASHER HOSE

WASHER TANK REMOVAL STEPS

- FRONT UNDER COVER RH (REFER TO [P.51-2](#)).
- FRONT SPLASH SHIELD RH MOUNTING CLIPS (REFER TO GROUP 42, FENDER [P.42-10](#)).
- FRONT BUMPER (REFER TO [P.51-2](#)).
- HEAD LIGHT (REFER TO GROUP 54A, HEADLIGHT [P.54A-153](#)).
- FRONT WASHER HOSE CONNECTIONS
- 3. WASHER TANK ASSEMBLY

WASHER TANK REMOVAL STEPS

4. WINDSHIELD WASHER MOTOR
5. WASHER TANK

WASHER MOTOR REMOVAL STEPS

- FRONT UNDER COVER RH (REFER TO P.51-2).
- FRONT WASHER HOSE CONNECTIONS
- 4. WINDSHIELD WASHER MOTOR

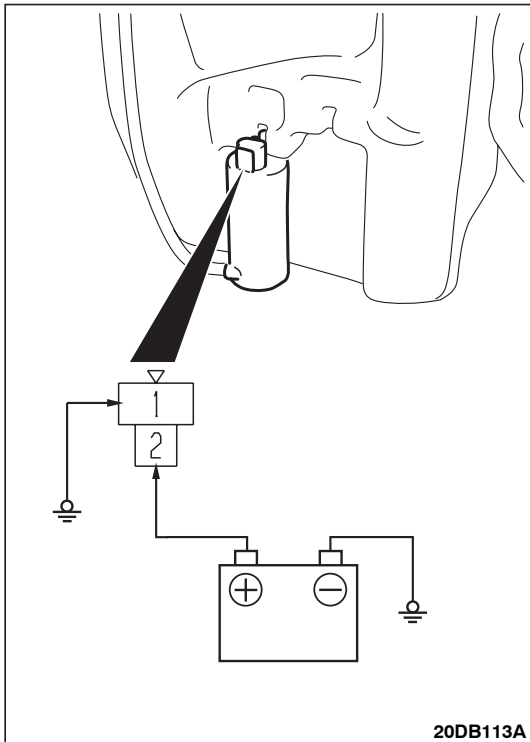
NOTE: For removal and installation of the wiper and washer switch, refer to GROUP 54A, Column switch P.54A-170.

INSPECTION

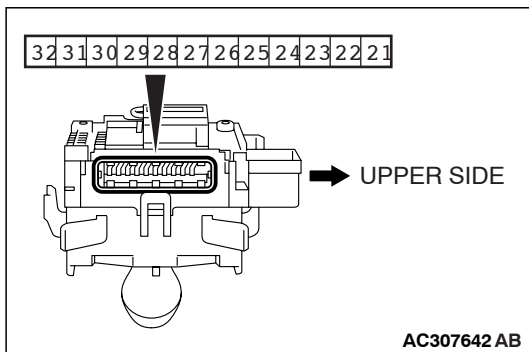
M1511008300147

WINDSHIELD WASHER MOTOR CHECK

1. Remove the washer tank assembly with the washer hose attached. Then fill the washer tank with water.
2. Check to see that the water is vigorously sprayed when connecting the positive battery terminal to terminal number 2 and terminal number 1 to ground.



WINDSHIELD WASHER SWITCH CHECK

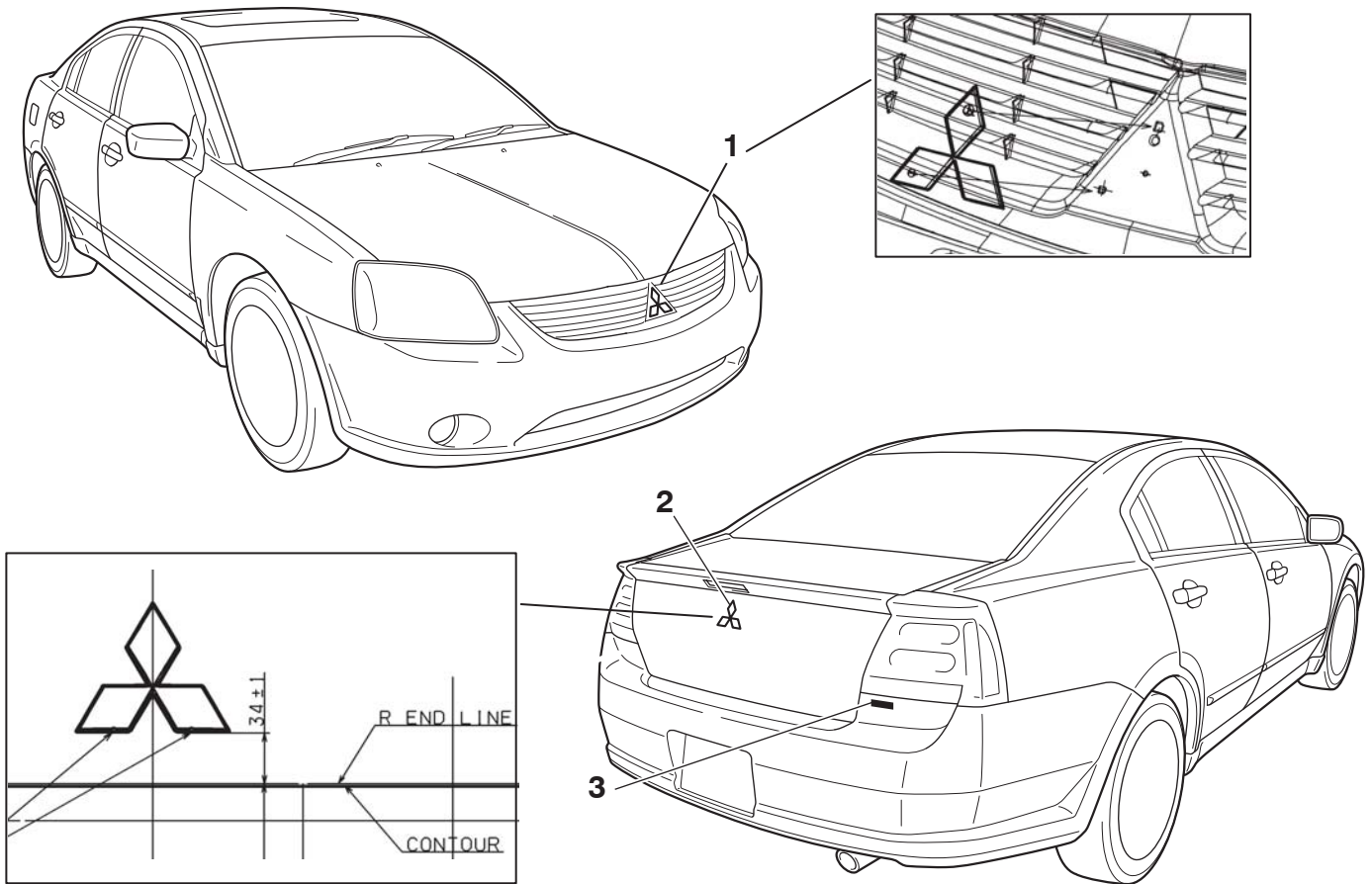


SWITCH POSITION	TESTER CONNECTION	SPECIFIED CONDITION
OFF	22 – 23	Open circuit
Windshield washer switch ON	22 – 23	Less than 2 ohms

MARK

REMOVAL AND INSTALLATION

M1511011800454



20DB114A

1. FRONT THREE-DIAMOND MARK

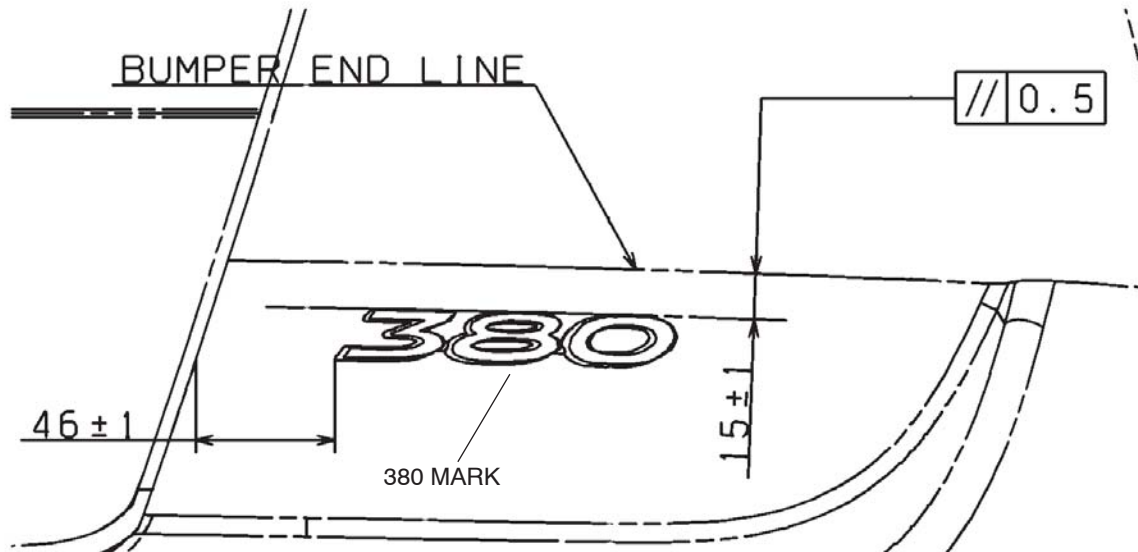
2. REAR THREE-DIAMOND MARK
>>A<< 3. GRADE MARK

INSTALLATION SERVICE POINT

>>A<< MARK INSTALLATION

1. Installation position

Attach the correct grade mark to the position shown in the illustration. ie (380/380LS/380VRX/380GT).



20DB115A

2. Installation procedure

- (1) Use 3M™ AAD Part number 8906 or equivalent to clean the mark installation surfaces on the body.

⚠ CAUTION

When attaching the mark, the ambient temperature should be 20 – 38°C (60 – 100°F) and the air should be completely free of dust. If the ambient temperature is lower than 20°C (60°F), the mark and the place on the vehicle body where the mark is to be attached should be heated to 20 – 38°C (60 – 100°F).

- (2) Peel off the protection sheet on the back of the mark to affix it in position.

DOOR MIRROR

GENERAL DESCRIPTION

M1511000100570

OPERATION DOOR MIRROR

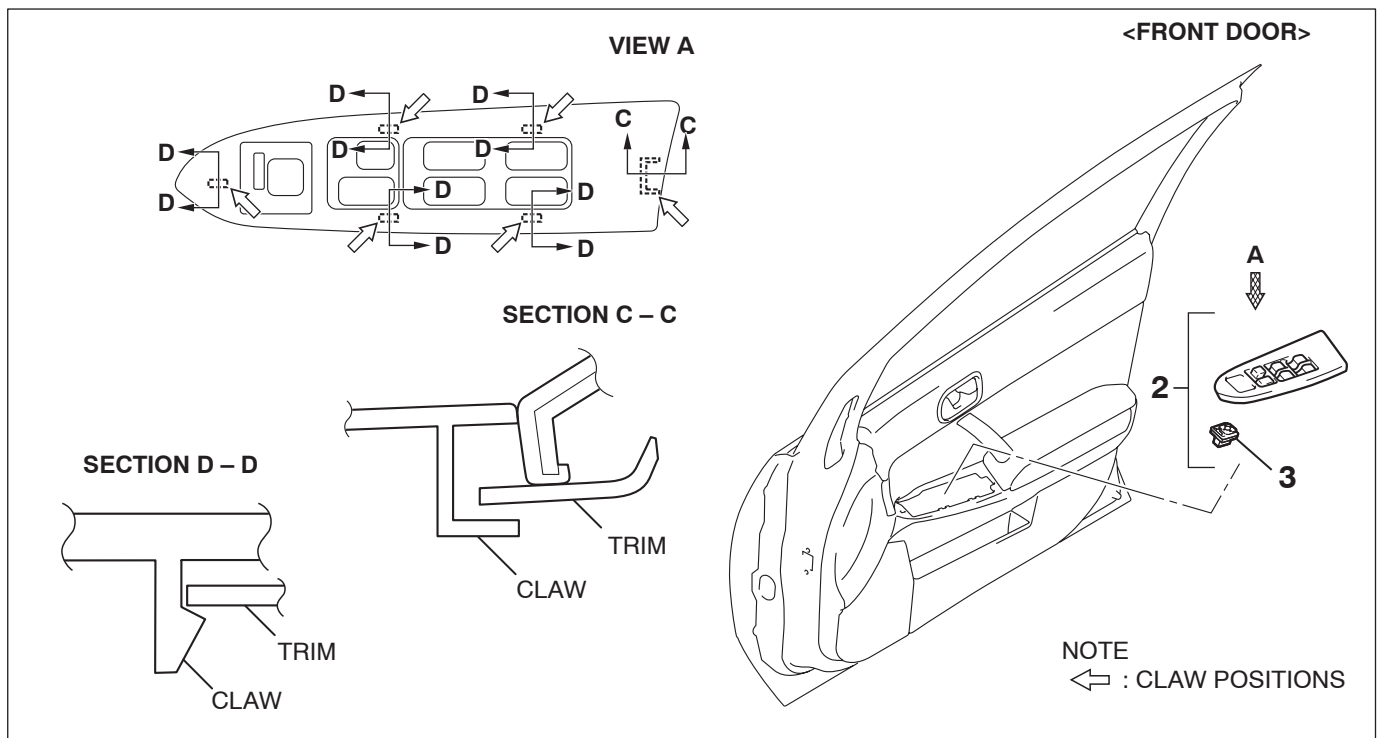
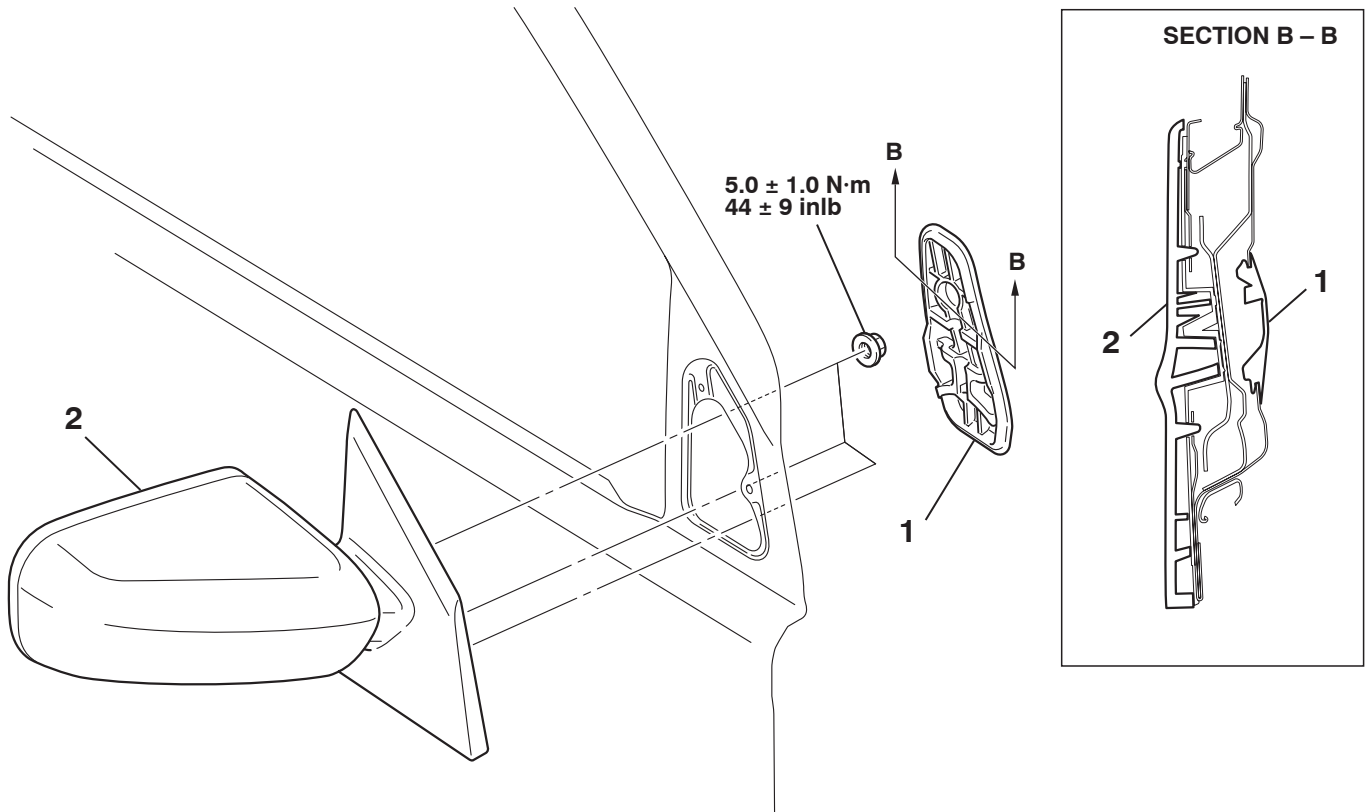
Remote Controlled Mirror Operation

- The mirror on the door mirror moves up/down and left/right by operating the remote controlled door mirror switch when the ignition switch is in the "ON" or "ACC" position.

DOOR MIRROR

REMOVAL AND INSTALLATION

M1511006400331



20DB106A

**REMOTE CONTROLLED MIRROR
REMOVAL STEPS**

- FRONT DOOR TRIM (REFER TO GROUP 52A, DOOR TRIMS P.52A-14).
- 1. DOOR MIRROR COVER
- 2. REMOTE CONTROLLED MIRROR ASSEMBLY

<<A>>

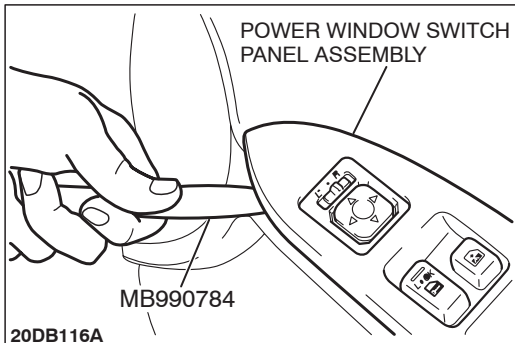
**REMOTE CONTROLLED MIRROR
SWITCH REMOVAL STEPS**

- 3. POWER WINDOW SWITCH PANEL ASSEMBLY
- 4. REMOTE CONTROLLED MIRROR SWITCH

REMOVAL SERVICE POINT

**<<A>> POWER WINDOW SWITCH PANEL
ASSEMBLY REMOVAL**

Insert special tool MB990874 as shown to remove the power window switch panel assembly.

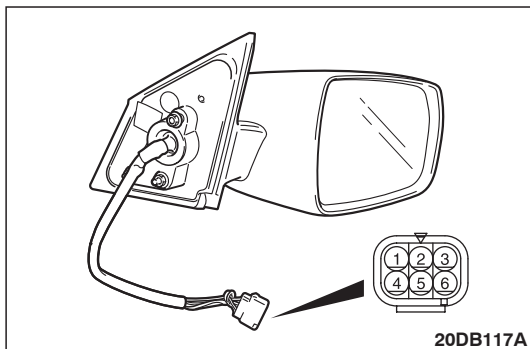


INSPECTION

M1511006500305

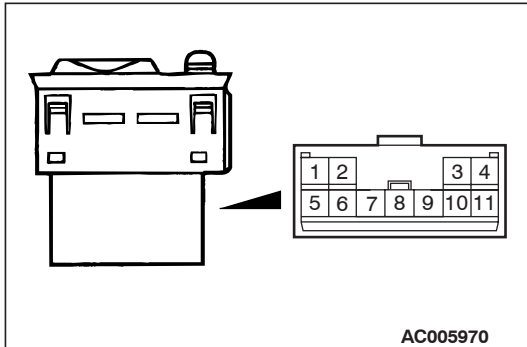
**ELECTRIC REMOTE CONTROL MIRROR
OPERATION CHECK**

Check that the mirror moves as described in the table when each terminal is connected to the battery.



BATTERY CONNECTION	DIRECTION OPERATION
<ul style="list-style-type: none"> Connect terminal 6 to the negative battery terminal. Connect terminal 4 to the positive battery terminal. 	Up
<ul style="list-style-type: none"> Connect terminal 6 to the positive battery terminal. Connect terminal 4 to the negative battery terminal. 	Down
<ul style="list-style-type: none"> Connect terminal 6 to the negative battery terminal. Connect terminal 5 to the positive battery terminal. 	Right
<ul style="list-style-type: none"> Connect terminal 6 to the positive battery terminal. Connect terminal 5 to the negative battery terminal. 	Left

DOOR MIRROR CONTROL SWITCH CONTINUITY CHECK



SWITCH POSITION		TESTER CONNECTION	SPECIFIED CONDITION
OFF		9 - 2, 9 - 3, 9 - 6, 9 - 10, 9 - 11, 1 - 2, 1 - 3, 1 - 6, 1 - 10, 1 - 11	Open circuit
Left side	OFF	9 - 6, 9 - 10, 9 - 11, 1 - 6, 1 - 10, 1 - 11	Open circuit
	Up	1 - 6, 9 - 11	Less than 2 ohms
	Down	1 - 11, 6 - 9	
	Right	1 - 6, 9 - 10	
	Left	1 - 10, 6 - 9	
Right side	OFF	9 - 2, 9 - 3, 9 - 6, 1 - 2, 1 - 3, 1 - 6	Open circuit
	Up	1 - 6, 3 - 9	Less than 2 ohms
	Down	1 - 3, 6 - 9	
	Right	1 - 6, 2 - 9	
	Left	1 - 2, 6 - 9	

SPECIFICATIONS

FASTENER TIGHTENING SPECIFICATIONS

M1511015300279

ITEM	SPECIFICATION
Front bumper	
License plate screw	0.9 ± 0.1 N·m (8 ± 1 in-lb)
Windshield wiper and washer	
Wiper arm and blade assembly nut	37 ± 3.0 N·m (27 ± 1 ft-lb)
Wiper link assembly to Body bolt	8.0 ± 2.0 N·m
Wiper motor to link assembly screw	7.5 ± 1.0 N·m (66 ± 13 in-lb)
Washer tank bolt	12 ± 1.0 N·m (102 ± 15 in-lb)
Door mirror	
Remote controlled mirror assembly bolt	5.0 ± 1.0 N·m (44 ± 9 in-lb)

SERVICE SPECIFICATIONS

M1511000300358

ITEM	STANDARD VALUE
Windshield wiper blade (RH) park position	38 ± 5 mm (1.50 ± 0.20 inches)
Windshield wiper blade (LH) park position	38 ± 5 mm (1.50 ± 0.20 inches)

ADHESIVE

M1511000500448

ITEM	SPECIFICATION
Door side protector molding	Adhesive tape: Double-sided tape 8.0 mm (0.32 inch) width and 1.2 mm (0.05 inch) thickness
Roof drip molding	Adhesive tape: Double-sided tape 10.0 mm (0.39 inch) width and 1.52 mm (0.06 inch) thickness

NOTES