

GROUP 52A

INTERIOR

CONTENTS

GENERAL DESCRIPTION.....	52A-3	TRIMS.....	52A-11
		REMOVAL AND INSTALLATION	52A-11
SEAT BELT DIAGNOSIS.....	52A-3	DOOR TRIM	52A-14
SPECIAL TOOLS.....	52A-3	REMOVAL AND INSTALLATION	52A-14
		DISASSEMBLY AND ASSEMBLY	52A-17
INSTRUMENT PANEL ASSEMBLY*.	52A-4	HEADLINING	52A-19
REMOVAL AND INSTALLATION	52A-4	REMOVAL AND INSTALLATION	52A-19
DISASSEMBLY AND ASSEMBLY	52A-9	INSIDE REAR VIEW MIRROR	52A-20
FLOOR CONSOLE ASSEMBLY....	52A-10		
REMOVAL AND INSTALLATION	52A-10		

Continued on next page

WARNING

Battery posts, terminals and related accessories contain lead and lead compounds. WASH HANDS AFTER HANDLING.

WARNINGS REGARDING SERVICING OF SUPPLEMENTAL RESTRAINT SYSTEM (SRS) EQUIPPED VEHICLES

WARNING

- *Improper service or maintenance of any component of the SRS, or any SRS-related component, can lead to personal injury or death to service personnel (from inadvertent firing of the air bag) or to the driver and passenger (from rendering the SRS inoperative).*
- *Service or maintenance of any SRS component or SRS-related component must be performed only at an authorized MITSUBISHI dealer.*
- *MITSUBISHI dealer personnel must thoroughly review this manual, and especially its GROUP 52B - Supplemental Restraint System (SRS) before beginning any service or maintenance of any component of the SRS or any SRS-related component.*

NOTE

The SRS includes the following components: SRS air bag control unit, SRS warning light, front impact sensors, air bag module, clock spring, and interconnecting wiring. Other SRS-related components (that may have to be removed/installed in connection with SRS service or maintenance) are indicated in the table of contents by an asterisk (*).

FRONT SEAT ASSEMBLY*	52A-21	REMOVAL AND FITMENT	52A-49
REMOVAL AND INSTALLATION	52A-21		
INSPECTION	52A-23	REAR SEAT ASSEMBLY	52A-55
POWER SEAT CONTINUITY AND		REMOVAL AND INSTALLATION	52A-55
DIAGNOSTIC CHECKS	52A-23	DISASSEMBLY AND REASSEMBLY	52A-57
OPERATION CHECK OF POWER			
SEAT MOTOR	52A-29	FRONT SEAT BELT*	52A-58
MEMORY SEAT CONTROLLER (MSC)	52A-31	REMOVAL AND INSTALLATION	52A-58
DISASSEMBLY AND ASSEMBLY RH SIDE	52A-33	INSPECTION	52A-59
DISASSEMBLY AND ASSEMBLY LH SIDE	52A-37		
REMOVAL SERVICE POINT	52A-42	REAR SEAT BELT	52A-59
FRONT SEAT TRIM COVER		REMOVAL AND INSTALLATION	52A-59
REMOVAL AND FITMENT	52A-43		
REAR SEAT CUSHION TRIM COVER		SPECIFICATIONS	52A-60
REMOVAL AND FITMENT	52A-46	FASTENER TIGHTENING	
REAR SEAT BACK TRIM COVER		SPECIFICATIONS	52A-60

GENERAL DESCRIPTION

M1521000100184

OPERATION

Seat belt warning system

If the driver turn the ignition switch to the "ON" position without fastening the seat belt, the seat belt warning light illuminates.

SEAT BELT DIAGNOSIS

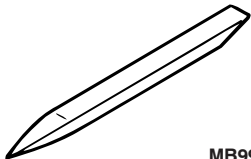
M1523000700182

The seat belt warning system is controlled by the Simplified Wiring System (SWS). For troubleshooting, refer to GROUP 54B, SWS diagnosis

[P.54B-101](#).

SPECIAL TOOLS

M1521000600327

TOOL	TOOL NUMBER AND NAME	SUPERSESSION	APPLICATION
 <p style="text-align: center;">MB990784</p>	MB990784 Ornament remover	General service tool	Removal of switch, trim, etc.

INSTRUMENT PANEL ASSEMBLY

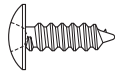

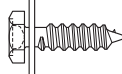
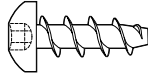

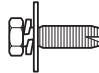
REMOVAL AND INSTALLATION

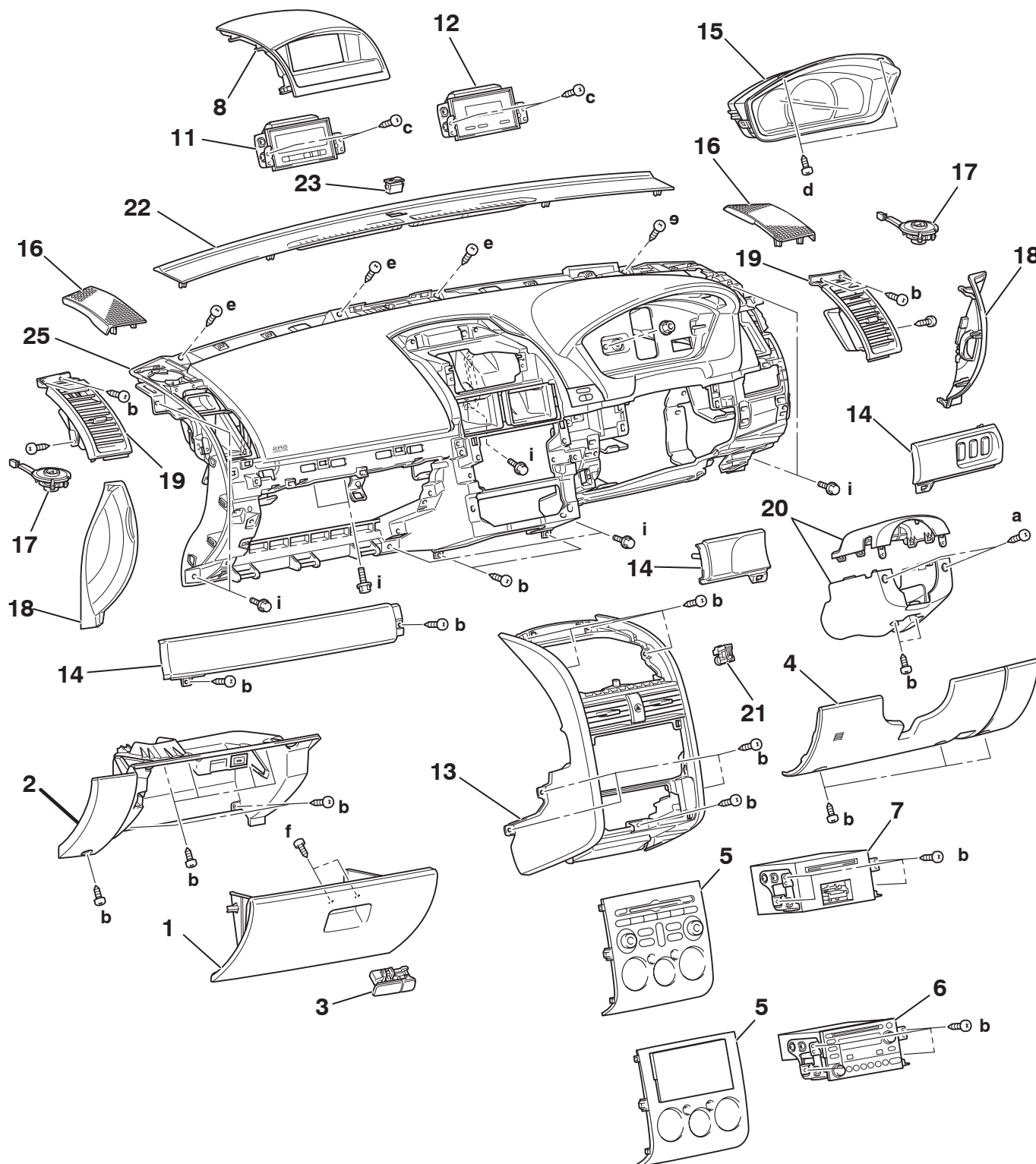
M1521001700684

CAUTION

- Refer to GROUP 52B, SRS Service Precautions [P.52B-16](#) and Air bag Module and Clock Spring [P.52B-237](#) before removing the passenger side air bag module.
- Do not subject the SRS-ECU to any shocks when removing or installing the instrument panel.

The following bolts and screws are used for installing the instrument panel. Bolts and screws are indicated as marks shown in the illustration in the sections of "Removal and Installation" and "Disassembly and Assembly."

NAME	SYMBOL	SIZE (D × L) mm	COLOR	SHAPE
TAPPING SCREW	a	5 × 12	BLACK	 AC104450
	b	5 × 16	-	
	c	5 × 20	-	
	d	5 × 20	BLACK	 AC104448
	e	6 × 16	GREEN	 AC104426
	f	8 × 15	-	 AC307531
WASHER ASSEMBLY BOLT	g	6 × 16	-	 AC104416
	h	6 × 25	-	
	i	6 × 16	-	 AC104417



19DB004A

REMOVAL STEPS

1. GLOVEBOX ASSEMBLY
2. INSTRUMENT PANEL PARCEL BOX
3. GLOVEBOX LOCK

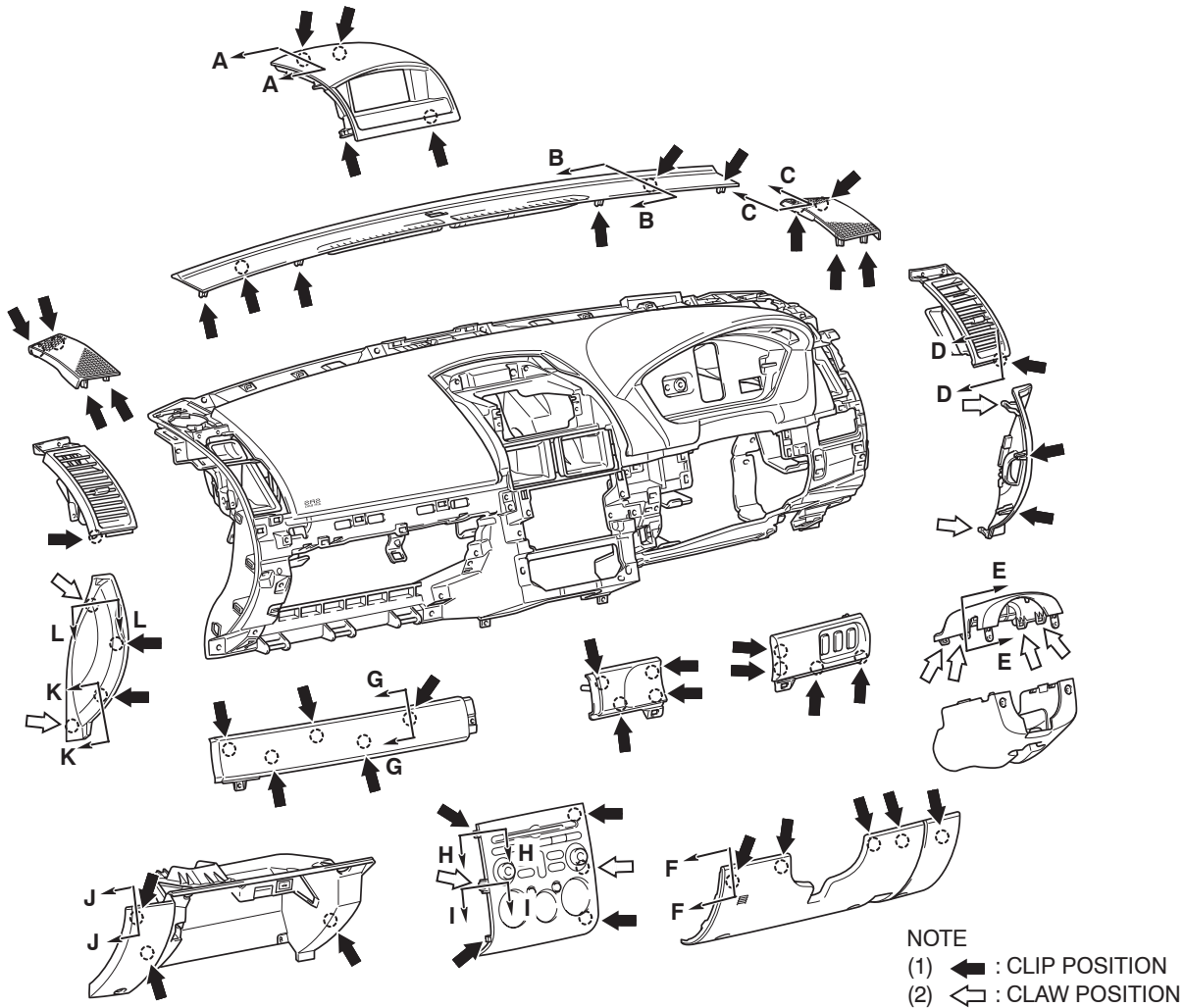
REMOVAL STEPS (Continued)

- HOOD LOCK RELEASE HANDLE (REFER TO GROUP 42, HOOD P.42-8.)
- 4. INSTRUMENT LOWER PANEL
- 5. INSTRUMENT CENTER PANEL ASSEMBLY

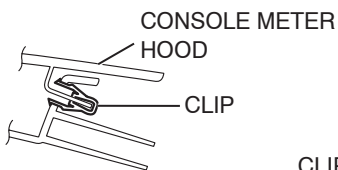
REMOVAL STEPS (Continued)

- CLOCK SPRING CONNECTOR
 - COLUMN SWITCH CONNECTOR
 - CLOCK SPRING AND COLUMN SWITCH ASSEMBLY (REFER TO GROUP 37, STEERING SHAFT P.37-25.)
21. INTERIOR TEMPERATURE SENSOR (GROUP 55B, SENSORS 55-160.)
 22. INSTRUMENT PANEL FRONT END GARNISH
 23. PHOTO SENSOR (GROUP 55B, SENSORS 55-160.) AND SECURITY LED.
 - FLOOR CONSOLE ASSEMBLY (REFER TO P.52A-10.)
 - COWL SIDE TRIM (REFER TO P.52A-11.)
 - AIR BAG MODULE CONNECTOR (PASSENGER'S SIDE) (REFER TO GROUP 52B, AIR BAG MODULE AND CLOCK SPRING P.52B-237.)
 25. INSTRUMENT PANEL ASSEMBLY

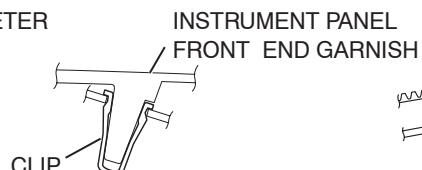
CLIP AND CLAW POSITIONS



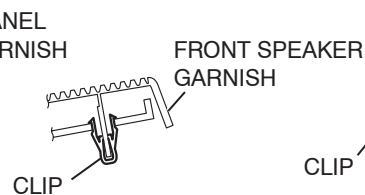
SECTION A - A



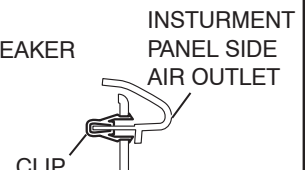
SECTION B - B



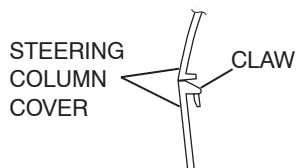
SECTION C - C



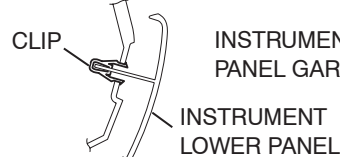
SECTION D - D



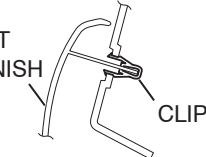
SECTION E - E



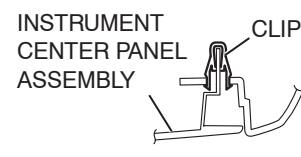
SECTION F - F



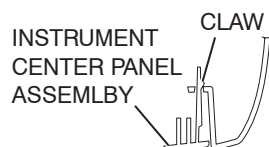
SECTION G - G



SECTION H - H



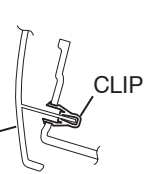
SECTION I - I



SECTION J - J



SECTION K - K



SECTION L - L

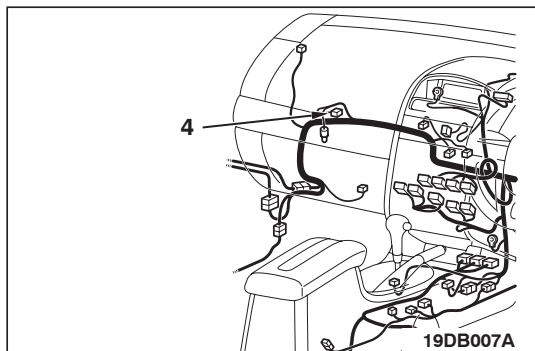
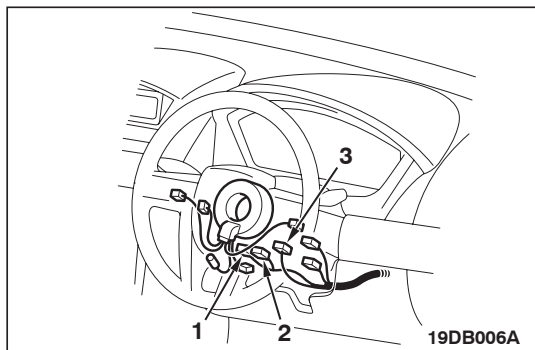


REMOVAL SERVICE POINT

<<A>> CONNECTOR DISCONNECTION

Disconnect the connectors shown in the illustration.

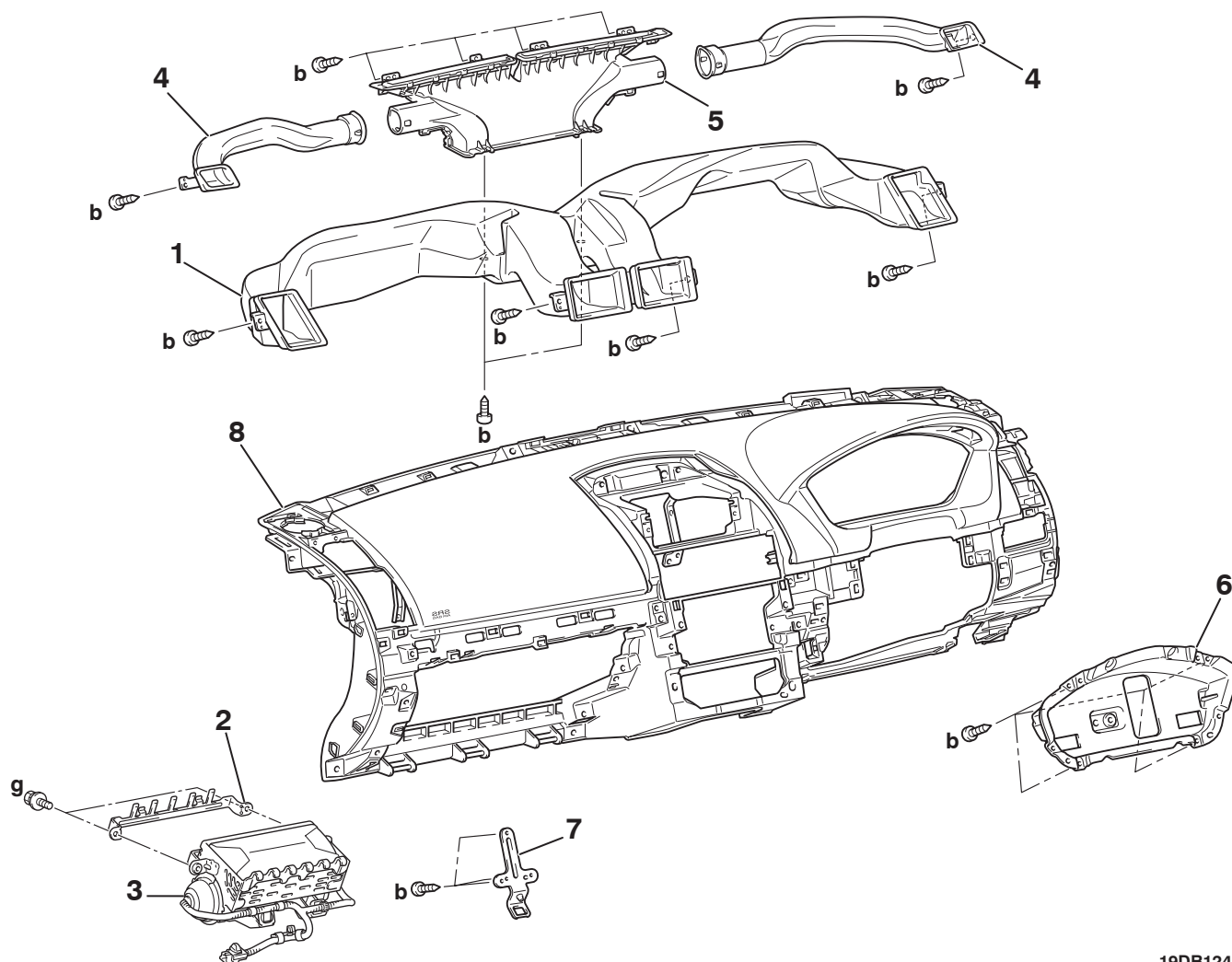
1. CLOCK SPRING CONNECTOR (6)
2. CLOCK SPRING CONNECTOR (4-Y)
3. COLUMN SWITCH CONNECTOR (10)



4. AIR BAG MODULE (FRONT PASSENGER'S SIDE) CONNECTOR (4-Y)

DISASSEMBLY AND ASSEMBLY

M1521001900376



19DB124A

DISASSEMBLY STEPS

1. DISTRIBUTION DUCT. REAR
CONSOLE DUCTS REFER TO
GROUP 55 HEATER ,AIR
CONDITIONING AN
VENTILATION [P.55-175](#)
2. BACKBONE BRACKET

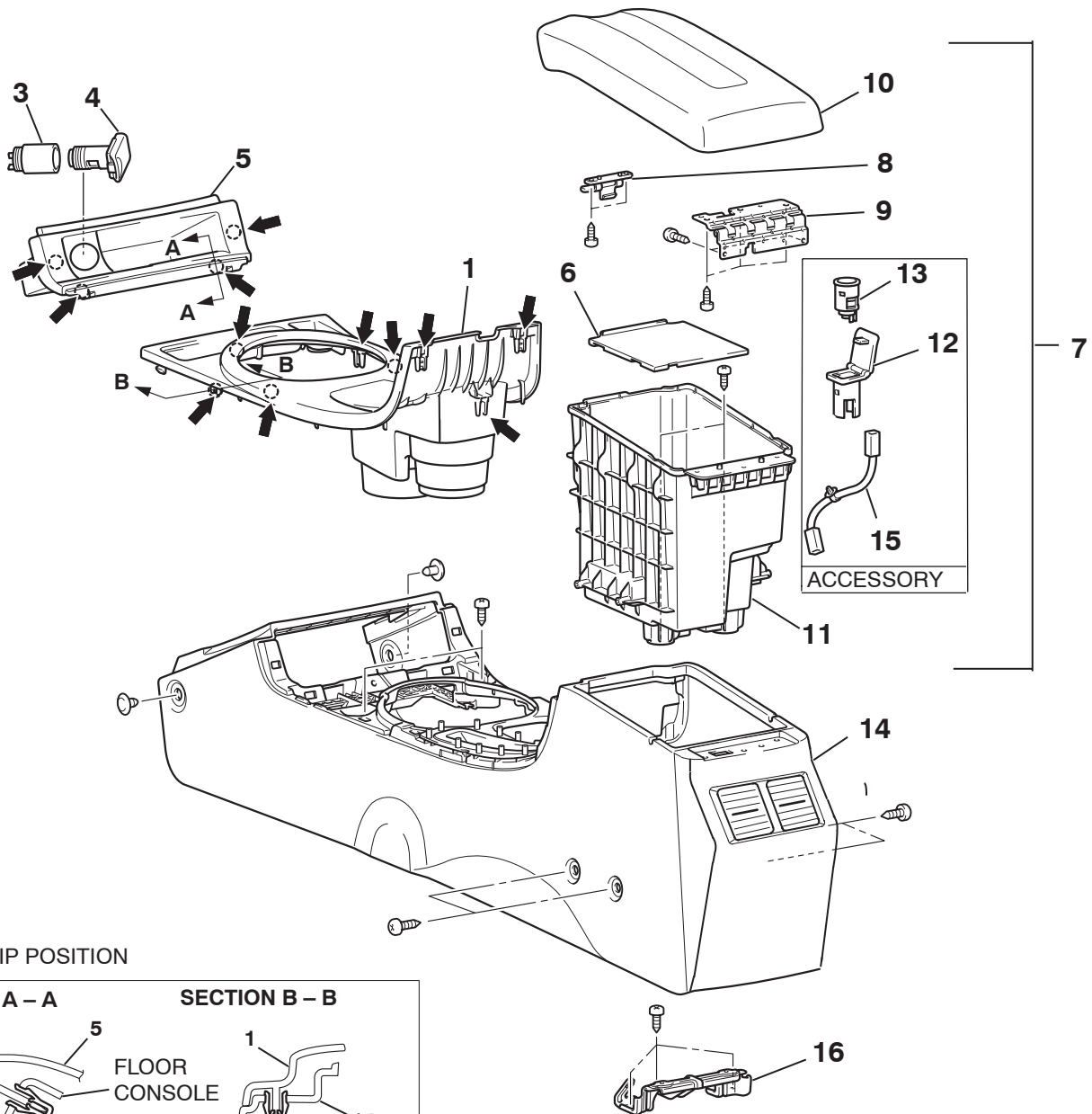
DISASSEMBLY STEPS

3. AIR BAG MODULE ASSEMBLY
(FRONT PASSENGER'S SIDE)
(REFER TO GROUP 52B, AIR
BAG MODULE(S) AND CLOCK
SPRING [P.52B-237.](#))
4. SIDE DEFROSTER DUCT
5. DEFROSTER NOZZLE
6. COMBINATION METER BRACKET
7. GLOVEBOX STRIKER
8. INSTRUMENT PANEL

FLOOR CONSOLE ASSEMBLY

REMOVAL AND INSTALLATION

M1521002200314



REMOVAL STEPS

1. GEARSHIFT LEVER PANEL
2. HEATED SEAT SWITCH
<VEHICLES WITH HEATED SEAT SWITCH>
3. ACCESSORY SOCKET (ACC)
(REFERTO GROUP 54A,
ACCESSORY SOCKET
[P.54A-174.](#))
4. ACCESSORY SOCKET COVER
5. FRONT BOX
6. PLATE
7. FLOOR CONSOLE ASSEMBLY

REMOVAL STEPS (Continued)

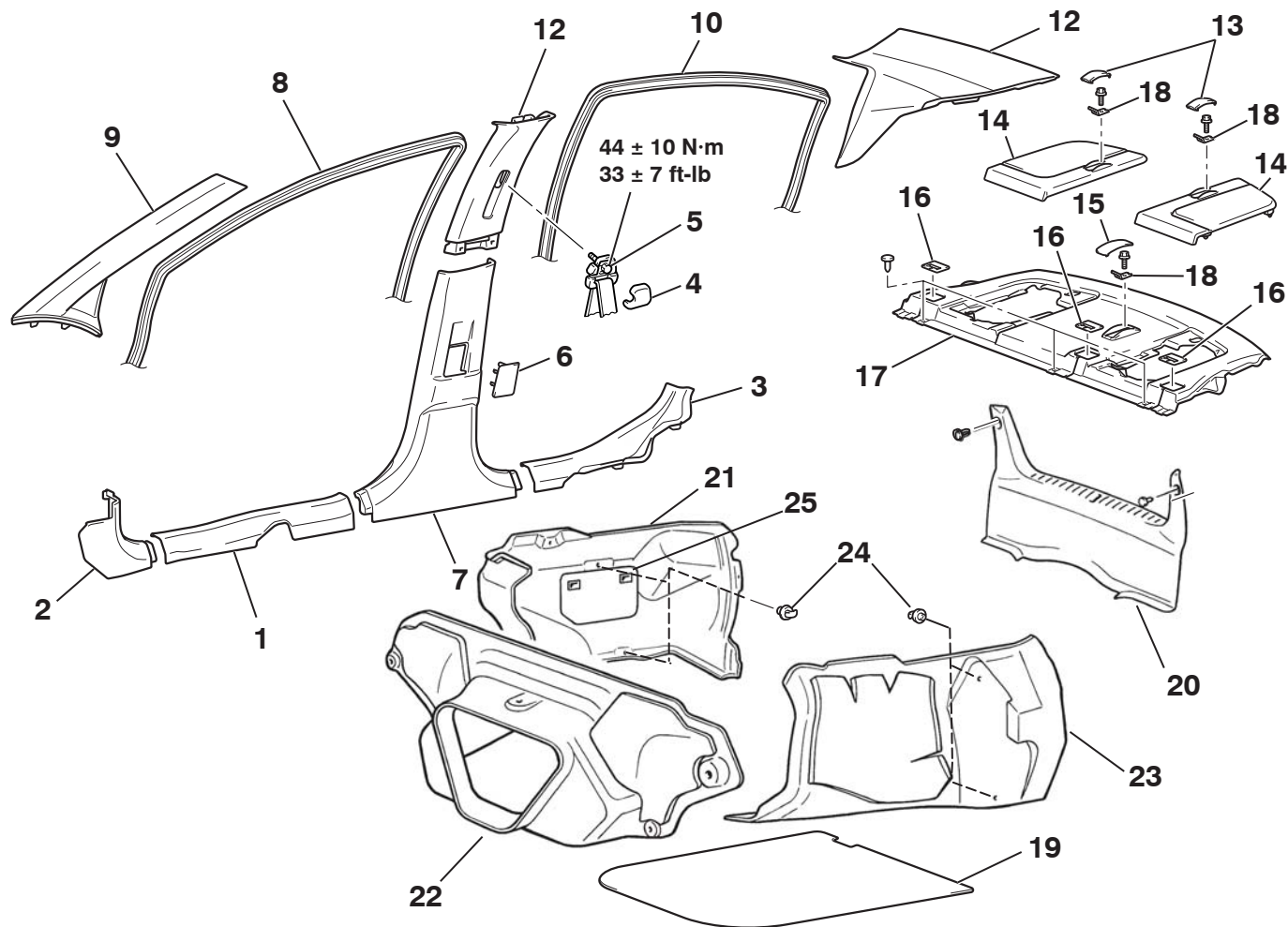
8. LID LOCK LEVER
9. HINGE
10. LID
11. INNER BOX
12. ACCESSORY SOCKET (+B)
(REFERTO GROUP 54A,
ACCESSORY SOCKET
[P.54A-174.](#))
13. ACCESSORY SOCKET COVER
14. FLOOR CONSOLE
15. ACCESSORY SOCKET HARNESS
16. REAR BRACKET

19DB125A

TRIMS

REMOVAL AND INSTALLATION

M1521001100455

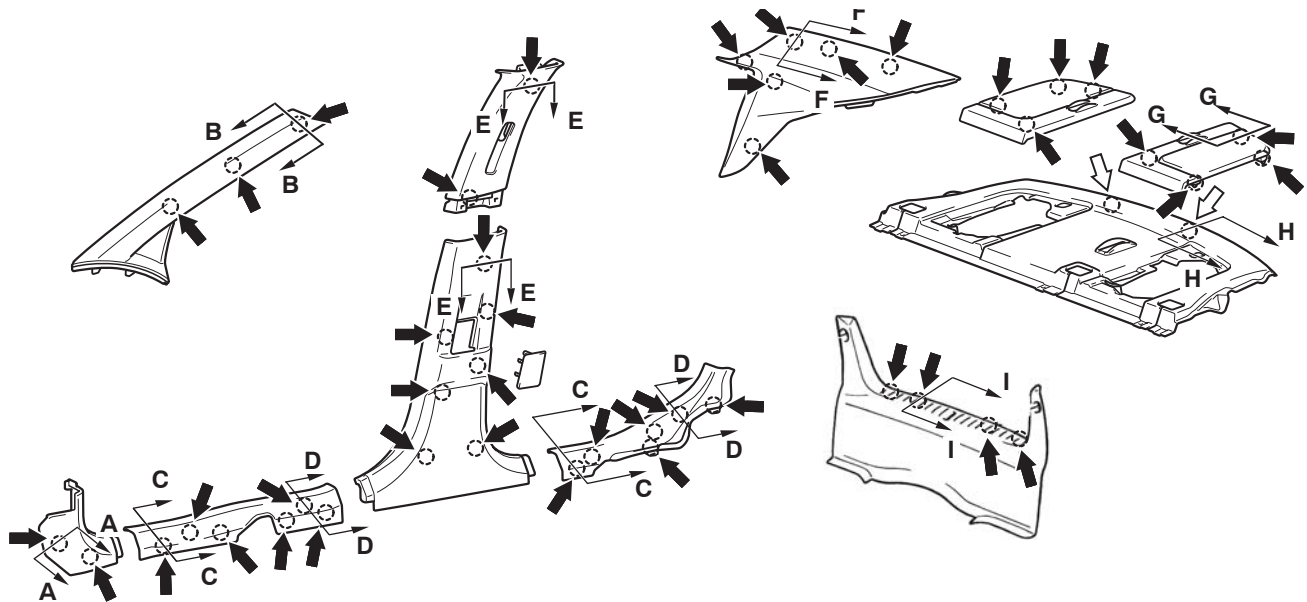


19DB001

<<A>>

1. FRONT SCUFF PLATE
2. COWL SIDE TRIM
- REAR SEAT CUSHION (REFER TO P.52A-55.)
3. REAR SCUFF PLATE
- FRONT SEAT BELT LOWER ANCHOR BOLT
4. FRONT SEAT BELT SASH GUIDE COVER
5. FRONT SEAT BELT SHOLDER ANCHOR BOLT
6. CENTER PILLAR COVER
7. CENTER PILLAR TRIM LOWER
8. FRONT DOOR OPENING TRIM
9. FRONT PILLAR TRIM
10. REAR DOOR OPENING TRIM
11. CENTER PILLAR TRIM UPPER
- REAR SEATBACK ASSEMBLY (REFER TO P.52A-55.)
12. REAR PILLAR TRIM
13. CHILD RESTRAINT LID
14. REAR SHELF SPEAKER GARNISH
15. CHILD RESTRAINT LID
16. SEAT BELT GARNISH
17. REAR SHELF TRIM
18. CHILD RESTRAINT FITTING
19. TRUNK ROOM FLOOR BOARD
20. REAR END TRIM
21. TRUNK TRIM SIDE RH
22. TRUNK TRIM, FRONT
23. TRUNK TRIM SIDE LH
24. PARCEL NET ANCHOR
25. JACK ACCESS PANEL

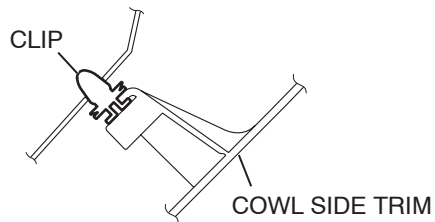
CLIP AND CLAW POSITION



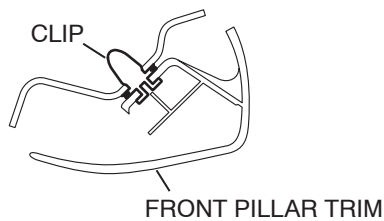
NOTE

- (1) : CLIP POSITION
(2) : CLAW POSITION

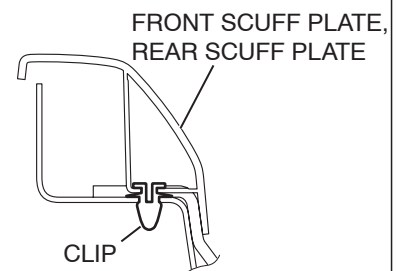
SECTION A - A



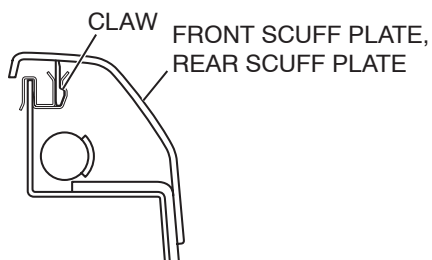
SECTION B - B



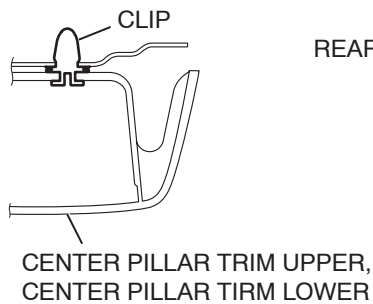
SECTION C - C



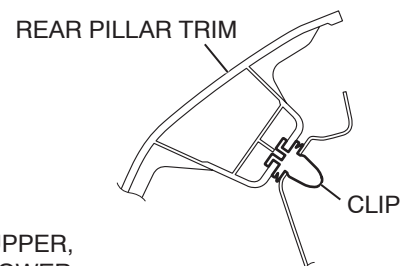
SECTION D - D



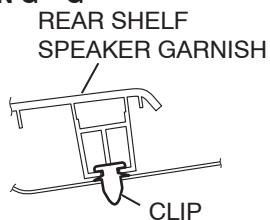
SECTION E - E



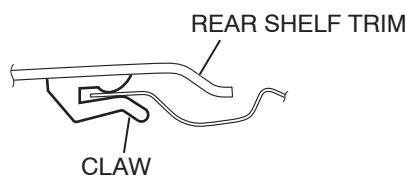
SECTION F - F



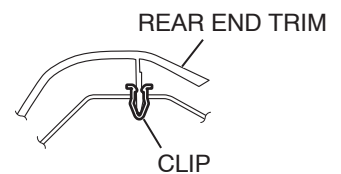
SECTION G - G



SECTION H - H



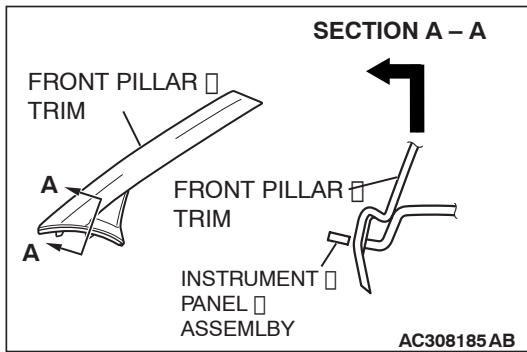
SECTION I - I



REMOVAL SERVICE POINT

<<A>> FRONT PILLAR TRIM REMOVAL

Release the clip and remove the front pillar trim by pulling it to the direction shown.

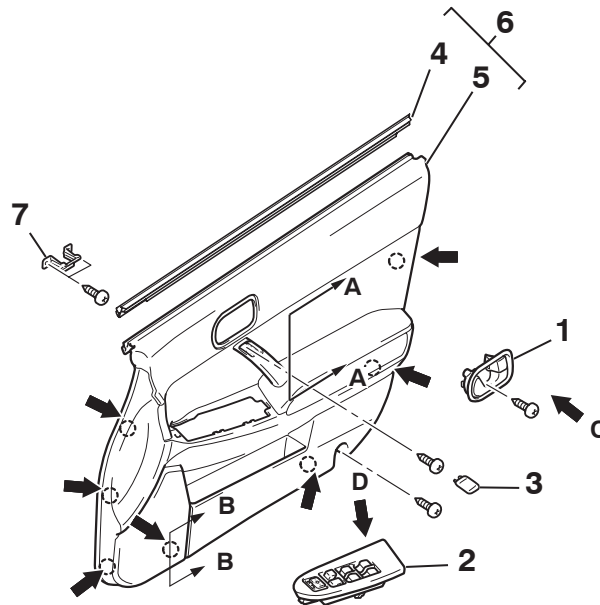


DOOR TRIM

REMOVAL AND INSTALLATION

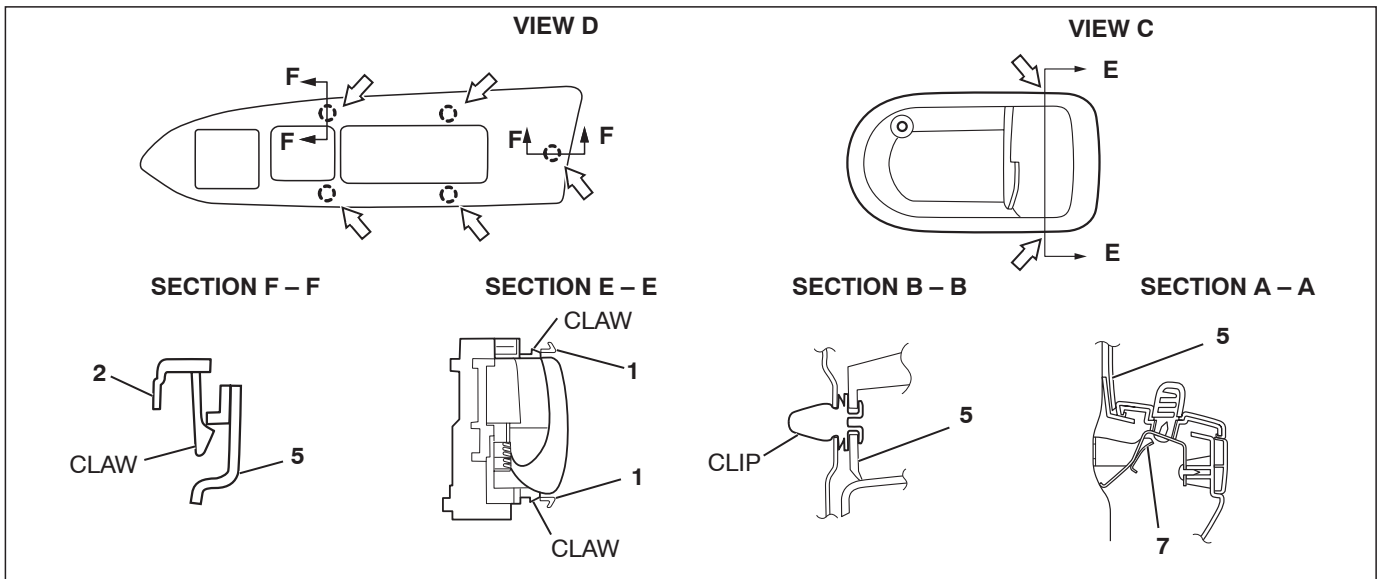
<FRONT DOOR TRIM>

M1521006400332



NOTE

- (1) : CLIP POSITION
(2) : CLAW POSITION



<<A>>

<>

REMOVAL STEPS

1. INSIDE HANDLE COVER
2. POWER WINDOW SWITCH
PANEL ASSEMBLY
3. ASSIST GRIP CAP
4. BELT LINE INNER
WEATHERSTRIP
5. FRONT DOOR TRIM ASSEMBLY
7. ARMREST BRACKET

INSTALLATION STEPS

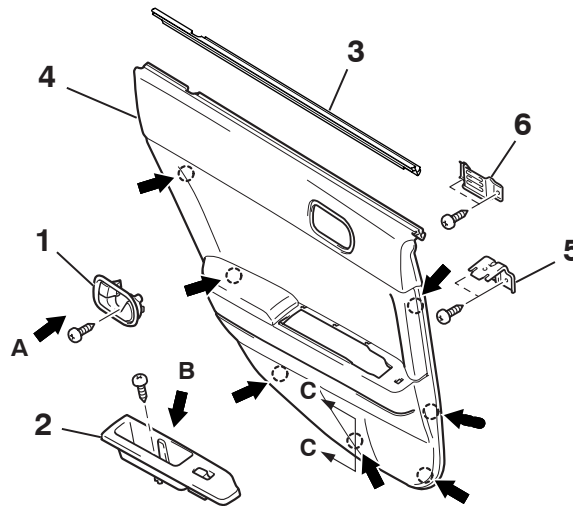
7. ARMREST BRACKET
6. BELT LINE INNER
WEATHERSTRIP AND FRONT
DOOR TRIM ASSEMBLY
3. ASSIST GRIP CAP
2. POWER WINDOW SWITCH
PANEL ASSEMBLY
1. INSIDE HANDLE COVER

Required Special Tool:

- MB990784: Ornament Remover

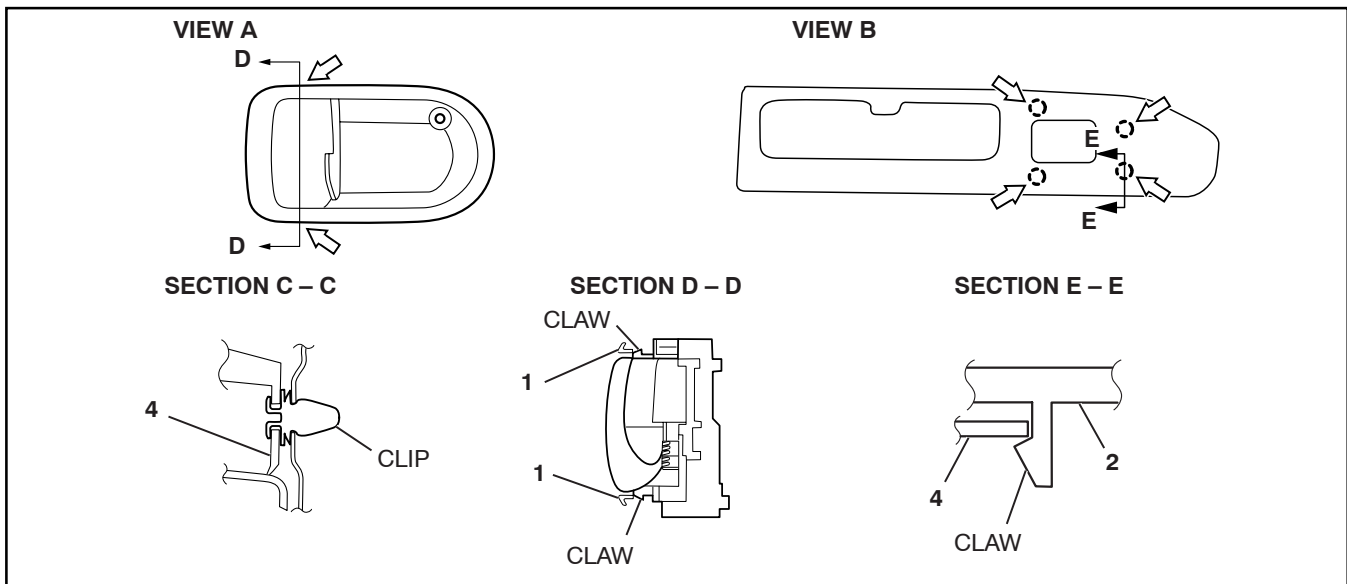
19DB052A

<REAR DOOR TRIM>



NOTE

- (1) : CLIP POSITION
(2) : CLAW POSITION



AC307435 AB

<<A>>

<>

REMOVAL STEPS

1. INSIDE HANDLE COVER
2. POWER WINDOW SWITCH
PANEL ASSEMBLY
3. BELT LINE INNER
WEATHERSTRIP
4. REAR DOOR TRIM ASSEMBLY

REMOVAL STEPS (Continued)

5. ARMREST BRACKET
6. REAR DOOR PANEL BRACKET

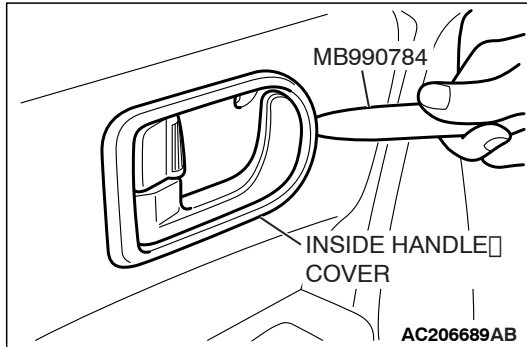
Required Special Tool:

- MB990784: Ornament Remover

REMOVAL SERVICE POINTS

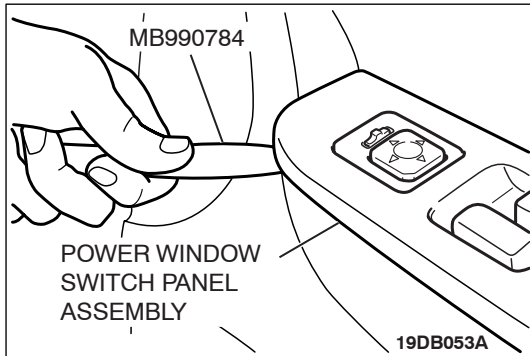
<<A>> INSIDE HANDLE COVER REMOVAL

Insert special tool MB990784 as shown to remove the inside handle cover.



<> POWER WINDOW SWITCH PANEL ASSEMBLY REMOVAL

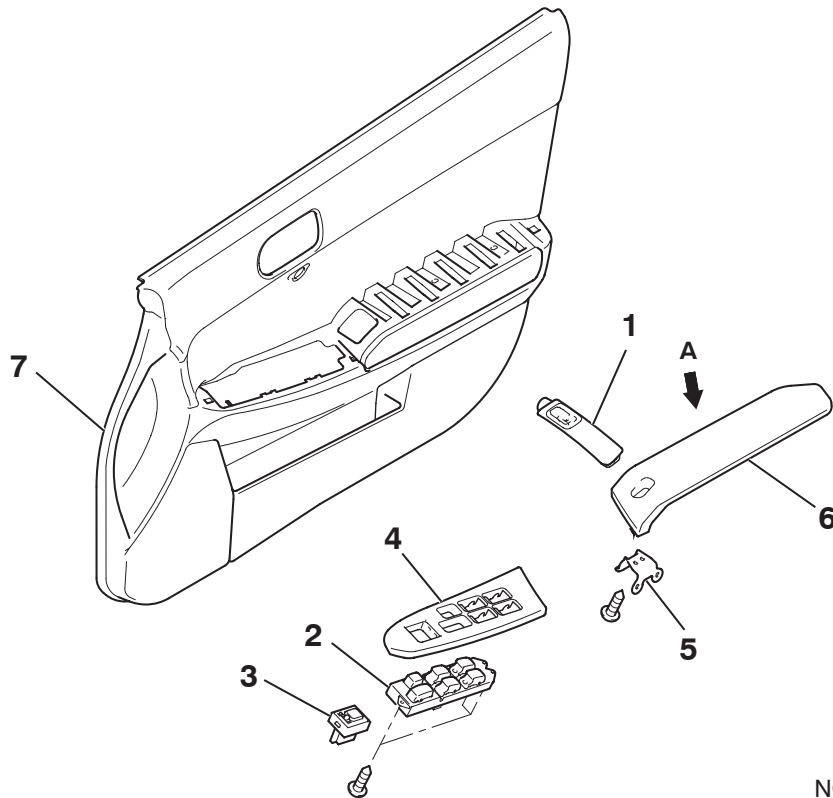
Insert special tool MB990784 as shown to remove the power window switch panel assembly.



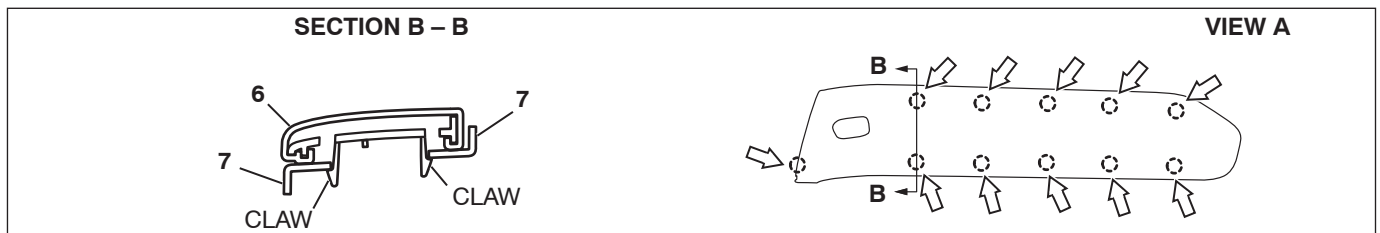
DISASSEMBLY AND ASSEMBLY

M1521006900100

<FRONT DOOR TRIM>



NOTE
↔ : CLAW POSITION



19DB054A

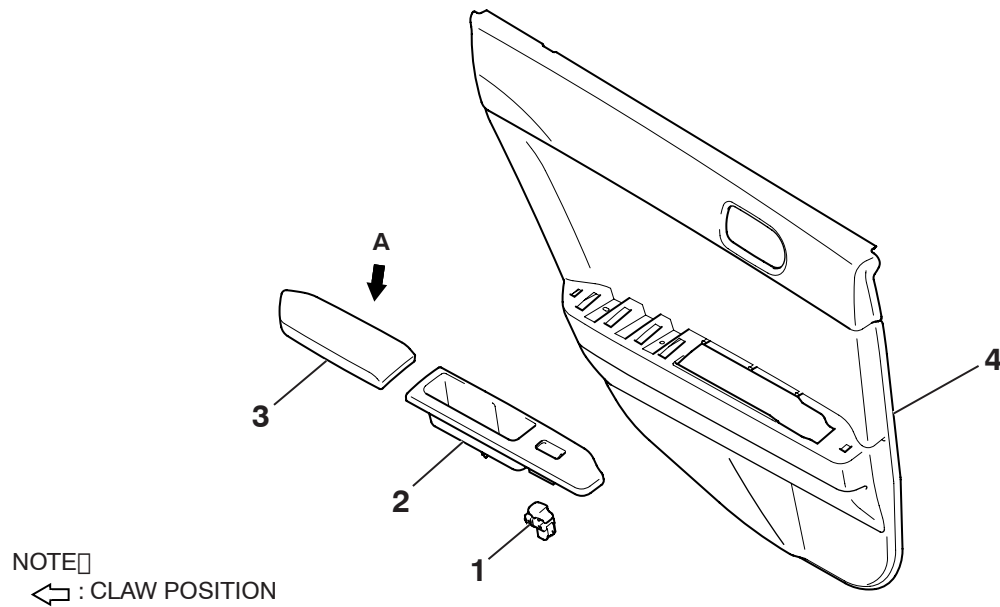
DISASSEMBLY STEPS

1. ASSIST GRIP
2. POWER WINDOW MAIN SWITCH
3. REMOTE CONTROLLED MIRROR SWITCH

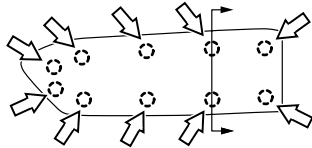
DISASSEMBLY STEPS

4. POWER WINDOW MAIN SWITCH PANEL
5. ARMREST BRACKET
6. ARMREST
7. FRONT DOOR TRIM

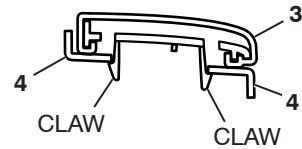
<REAR DOOR TRIM>



VIEW A



SECTION B - B



AC307442 AB

DISASSEMBLY STEPS

1. POWER WINDOW SUB SWITCH
2. POWER WINDOW SUB SWITCH PANEL

DISASSEMBLY STEPS

3. ARMREST
4. REAR DOOR TRIM

HEADLINING

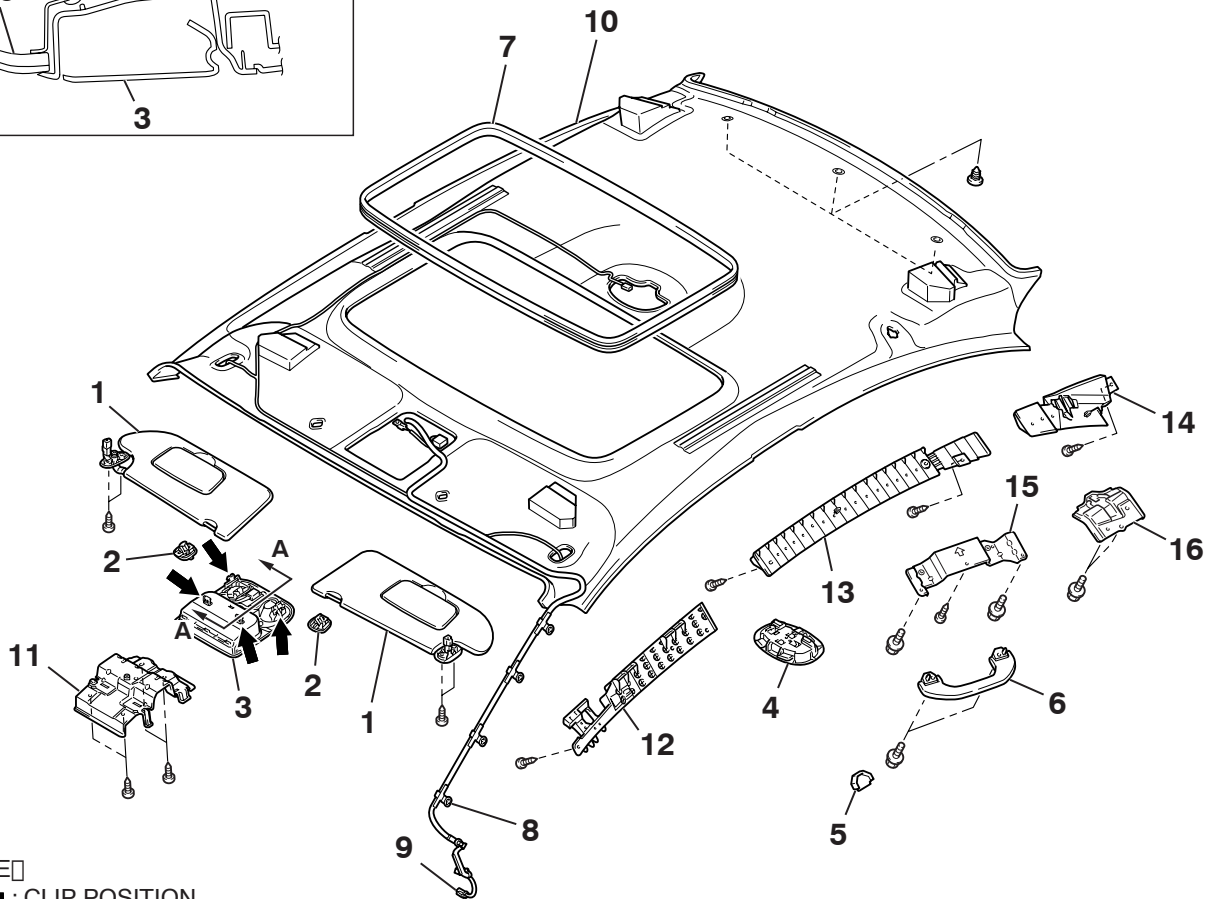
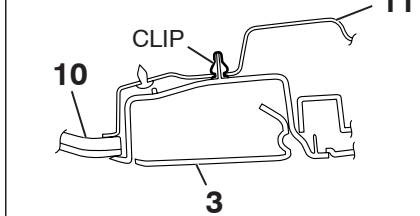
REMOVAL AND INSTALLATION

M1521001400360

Pre-removal and Post-installation Operation

- Front Seat Assembly (Refer to [P.52A-21.](#))
- Removal and Installation of Rear Seat Cushion Assembly and Rear Seatback Assembly (Refer to [P.52A-55.](#))
- Removal and Installation of Front Pillar Trim, Center Pillar Trim Upper and Rear Pillar Trim (Refer to [P.52A-11.](#))

SECTION A - A



NOTE

← : CLIP POSITION

AC307811AB

REMOVAL STEPS

1. SUN VISOR
2. SUN VISOR HOLDER
3. OVERHEAD CONSOLE ASSEMBLY
4. DOME LIGHT ASSEMBLY (REFER TO GROUP 54A, DOME LIGHT [P.54A-163.](#))
5. ASSIST GRIP PLUG
6. ROOF INSIDE ASSIST GRIP <VEHICLES WITH ROOF INSIDE ASSIST GRIP>
7. SUNROOF OPENING TRIM <VEHICLES WITH SUNROOF>

<<A>>

REMOVAL STEPS (Continued)

8. ROOF HARNESS CLAMP
 - INSTRUMENT PANEL SIDE COVER (REFER TO [P.52A-4.](#))
9. ROOF HARNESS CONNECTOR
 - FLOOR CONSOLE ASSEMBLY (REFER TO [P.52A-10.](#))
 - PARKING BRAKE LEVER ASSEMBLY MOUNTING BOLT (REFER TO GROUP 36, PARKING BRAKE LEVER [P.36-6.](#))
10. HEADLINING ASSEMBLY
11. OVERHEAD CONSOLE BRACKET
12. FRONT HEADLINING PAD

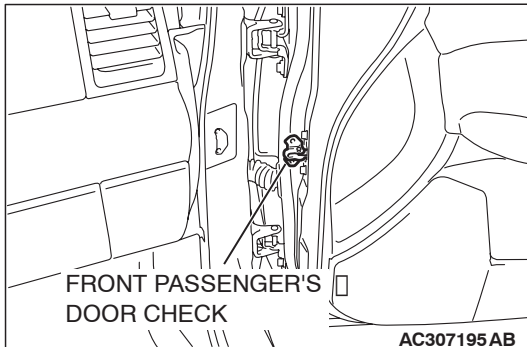
REMOVAL STEPS (Continued)

13. CENTER HEADLINING PAD
14. REAR HEADLINING PAD
15. ROOF INSIDE ASSIST GRIP
BRACKET <VEHICLES WITH
ROOF INSIDE ASSIST GRIP>
16. ASSIST GRIP BRACKET

REMOVAL SERVICE POINT

<<A>> HEADLINING ASSEMBLY REMOVAL

Remove the front passenger's door check (body side mounting bolt), open the front passenger's door and remove the headlining assembly. (Refer to GROUP 42, Door Assembly [P.42-37](#).)



INSIDE REAR VIEW MIRROR

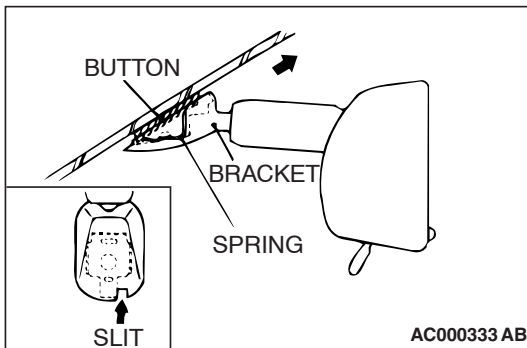
M1521002600248

REMOVAL SERVICE POINT

INSIDE REAR VIEW MIRROR REMOVAL

Insert a narrow flat-tip screwdriver into the slit in the inside rear view mirror bracket, keep the spring pushed in and remove the inside rear view mirror in the direction of the arrow in the illustration.

NOTE: While the spring is pushed in, the connection between the spring and the pawl of the button is released.



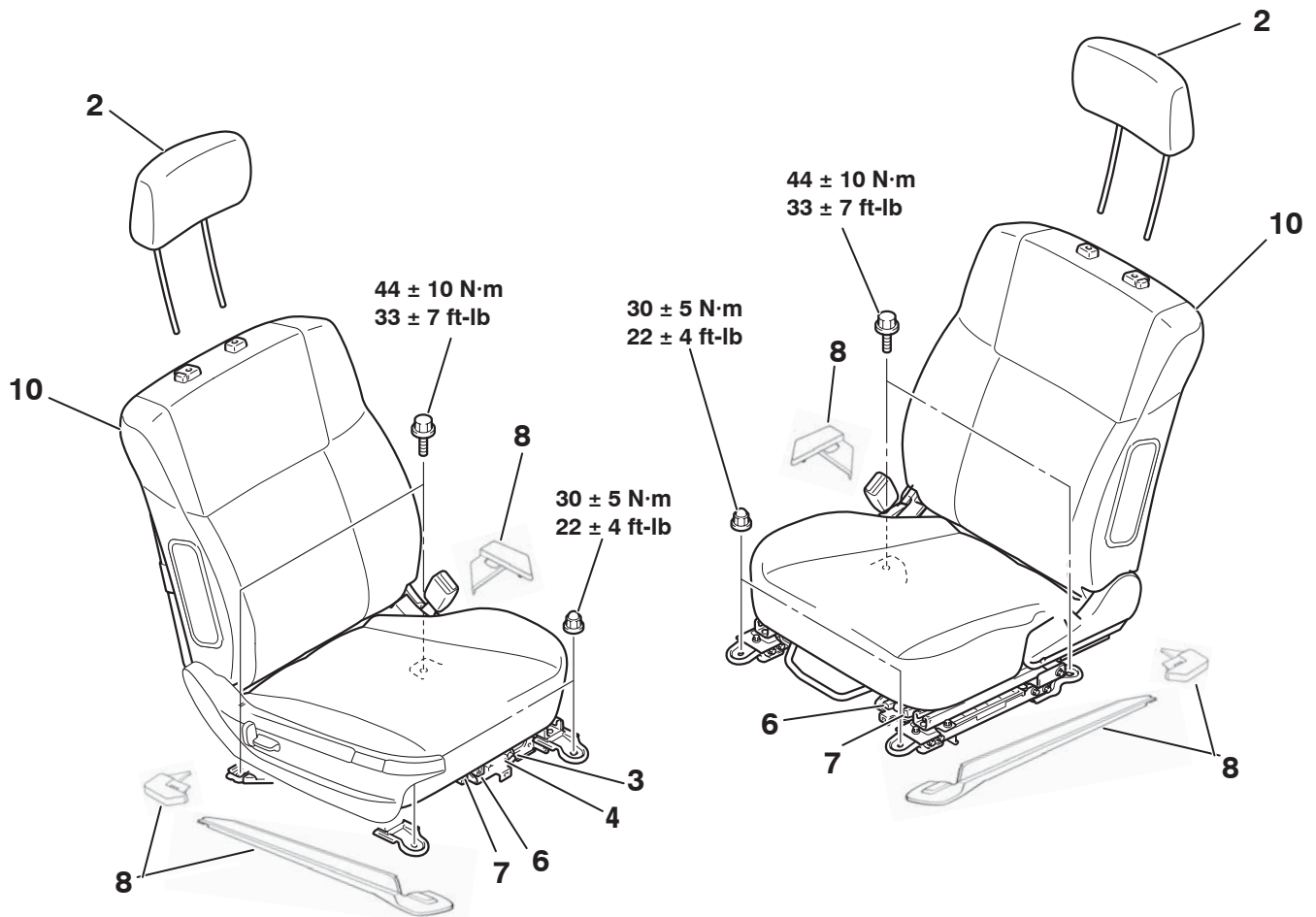
FRONT SEAT ASSEMBLY

REMOVAL AND INSTALLATION

M1522001300560

WARNING

- Before removing the front seat assembly, refer to **GROUP 52B, Service Precautions P.52B-16** and **Air Bag Module and Clock Spring P.52B-237**.



19DB002A

2. HEADREST
- FRONT SEAT ASSEMBLY
REMOVAL STEPS**
3. SEAT BELT SWITCH
CONNECTOR
4. POWER SEAT CONNECTOR RH
<VEHICLES WITH MEMORY
SEAT>
6. POWER SEAT CONNECTOR
<VEHICLES WITH POWER SEAT>

FRONT SEAT ASSEMBLY REMOVAL STEPS (Continued)

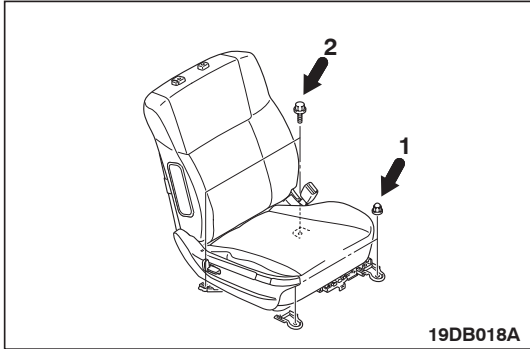
7. SIDE-AIR BAG MODULE
CONNECTOR <VEHICLES WITH
SIDE-AIR BAG>
8. FRONT SEAT REAR ANCHOR
COVER
- >>A<< 10. FRONT SEAT ASSEMBLY

INSTALLATION SERVICE POINT

>>A<< FRONT SEAT ASSEMBLY INSTALLATION

⚠ CAUTION

Install the front passenger's seat assembly before installing the outer seat belt.



1. Temporarily tighten the nuts in mounting locations shown in the illustration with no weight on the front seat cushion and check the operation of the seat slide.
2. Temporarily tighten the bolts in mounting locations shown in the illustration with no weight on the front seat cushion.
3. Tighten the nuts and bolts in all mounting locations to the specified torque.

INSPECTION

M1522005500113

POWER SEAT CONTINUITY AND DIAGNOSIS CHECK

SPECIAL TOOL:

- MB991219: Inspection Test Harness

CIRCUIT DIAGRAMS:

- Refer to circuit diagrams GROUP-90
- Refer to configuration diagrams GROUP-80

NOTE: Check connectors and terminals for damage or loose connections at the seat harness and all supply circuits connections to seat. Repair or replace wiring harness if damaged.

NON-MEMORY SEAT DIAGNOSIS

POWER SEAT SUPPLY AND GROUND CONNECTOR (D-40)

NOTE: The special tool (Inspection test harness) MB991219 for connector pin contact pressure should be used. The test probe should never be forcibly inserted, as it may cause a defective contact.

SUPPLY	TEST CONNECTION (D-40)	SPECIFIED CONDITION
BATTERY SUPPLY	1	12V
GROUND	2	Less than 2 ohms or 0V

4-WAY TRACK (NON MEMORY)

NOTE: The special tool (Inspection test harness) MB991219 for connector pin contact pressure should be used. The test probe should never be forcibly inserted, as it may cause a defective contact.

SWITCH POSITION		TEST CONNECTION		SPECIFIED CONDITION
		SWITCH	MOTOR	
REAR LIFT MOTOR	UP	1	1	Less than 2 ohms
	DOWN	4	5	Less than 2 ohms
FRONT LIFT MOTOR	UP	2	1	Less than 2 ohms
	DOWN	3	5	Less than 2 ohms

6-WAY TRACK (NON MEMORY)

NOTE: The special tool (Inspection test harness) MB991219 for connector pin contact pressure should be used. The test probe should never be forcibly inserted, as it may cause a defective contact.

SWITCH POSITION		TEST CONNECTION		SPECIFIED CONDITION
		SWITCH	MOTOR	
REAR LIFT MOTOR	UP	2	1	Less than 2 ohms
	DOWN	3	5	Less than 2 ohms
FRONT LIFT MOTOR	UP	1	1	Less than 2 ohms
	DOWN	4	5	Less than 2 ohms
TRACK/ SLIDE MOTOR	FORWARD	5	2	Less than 2 ohms
	BACK	8	1	Less than 2 ohms

8 and 10-WAY TRACK (NON MEMORY)

NOTE: The special tool (Inspection test harness) MB991219 for connector pin contact pressure should be used. The test probe should never be forcibly inserted, as it may cause a defective contact.

SWITCH POSITION		TEST CONNECTION		SPECIFIED CONDITION
		SWITCH	MOTOR	
REAR LIFT MOTOR	UP	7	1	Less than 2 ohms
	DOWN	8	5	Less than 2 ohms
FRONT LIFT MOTOR	UP	6	1	Less than 2 ohms
	DOWN	9	5	Less than 2 ohms
TRACK/ SLIDE MOTOR	FORWARD	10	2	Less than 2 ohms
	BACK	3	1	Less than 2 ohms
RECLINING MOTOR	FORWARD	4	1	Less than 2 ohms
	BACK	2	5	Less than 2 ohms

MEMORY SEAT DIAGNOSIS

POWER SEAT SUPPLY AND GROUND CONNECTOR (D-40)

SPECIAL TOOL:

- MB991219: Inspection Test Harness

CIRCUIT DIAGRAMS:

- Refer to circuit diagrams GROUP-90
- Refer to configuration diagrams GROUP-80

NOTE: Check connectors and terminals for damage or loose connections at the seat harness and all supply circuits connections to seat. Repair or replace wiring harness if damaged.

NOTE: The special tool (Inspection test harness) MB991219 for connector pin contact pressure should be used. The test probe should never be forcibly inserted, as it may cause a defective contact.

SUPPLY	TEST CONNECTION (D-40)	SPECIFIED CONDITION
BATTERY SUPPLY	1	12V
GROUND	2	Less than 2 ohms or 0V

10-WAY TRACK (MEMORY)- SOURCE TO (MSC) POWER CONNECTOR (D-38)

NOTE: The special tool (Inspection test harness) MB991219 for connector pin contact pressure should be used. The test probe should never be forcibly inserted, as it may cause a defective contact.

CIRCUIT DESCRIPTION	TEST CONNECTION		
	(MSC) POWER (D-38)	SOURCE	INTERMEDIATE CONNECTOR
GROUND	1	GROUND 15	-
"NEUTRAL"	2	A/T-ECU (B-19) 31	(B-25) pin 9
Bus LT	3	-	-
IGNITION- LED ON	4	(IGN 2) J/B fuse 9	(C-28) pin 35
DOOR SW.- LED ON	5	RH Door sw. (D-34) 2	-
VEHICLE SPEED	6	A/T-ECU (B-19) 24	(C-25) pin 8
"PARK"	7	A/T-ECU (B-19) 30	(C-25) pin 10
N.C	-	-	-

10-WAY TRACK (MEMORY)-switch to module- 20 pin

CIRCUIT DIAGRAMS:

- Refer to circuit diagrams GROUP-90
- Refer to configuration diagrams GROUP-80

NOTE: Check connectors and terminals for damage or loose connections at the seat harness and all supply circuits connections to seat. Repair or replace wiring harness if damaged.

NOTE: The special tool (Inspection test harness) MB991219 for connector pin contact pressure should be used. The test probe should never be forcibly inserted, as it may cause a defective contact.

SWITCH POSITION		TEST CONNECTION		SPECIFIED CONDITION
		SWITCH	(MSC) MODULE 20 PIN	
REAR LIFT MOTOR	UP	7	16	Less than 2 ohms
	DOWN	8	13	Less than 2 ohms
FRONT LIFT MOTOR	UP	6	5	Less than 2 ohms
	DOWN	9	7	Less than 2 ohms
TRACK/ SLIDE MOTOR	FORWARD	10	4	Less than 2 ohms
	BACK	3	3	Less than 2 ohms
RECLINING MOTOR	FORWARD	4	14	Less than 2 ohms
	BACK	2	2	Less than 2 ohms

10-WAY TRACK (MEMORY) 12pin connector (A) at module to motor circuits

NOTE: The special tool (Inspection test harness) MB991219 for connector pin contact pressure should be used. The test probe should never be forcibly inserted, as it may cause a defective contact.

SWITCH POSITION		TEST CONNECTION		SPECIFIED CONDITION
		(MSC) MODULE 12 PIN(A)	MOTOR	
REAR LIFT MOTOR	UP	2	1	Less than 2 ohms
	DOWN	3	5	Less than 2 ohms
FRONT LIFT MOTOR	UP	11	5	Less than 2 ohms
	DOWN	10	1	Less than 2 ohms
TRACK/ SLIDE MOTOR	FORWARD	4	2	Less than 2 ohms
	BACK	9	1	Less than 2 ohms

10-WAY TRACK (MEMORY) lumbar switch to module (20-pin)

CIRCUIT DIAGRAMS:

- Refer to circuit diagrams GROUP-90
- Refer to configuration diagrams GROUP-80

NOTE: Check connectors and terminals for damage or loose connections at the seat harness and all supply circuits connections to seat. Repair or replace wiring harness if damaged.

NOTE: The special tool (Inspection test harness) MB991219 for connector pin contact pressure should be used. The test probe should never be forcibly inserted, as it may cause a defective contact.

SWITCH POSITION		TEST CONNECTION		SPECIFIED CONDITION
		SWITCH	(MSC) MODULE	
LUMBAR SWITCH	SOFTER	2	12 (20pin)	Less than 2 ohms
	HARDER	4	6 (20pin)	Less than 2 ohms
	MEMORY	3	6 (16pin)	Less than 2 ohms

10-WAY TRACK (MEMORY) lumbar and recline module connector (12-pin) to motors

NOTE: The special tool (Inspection test harness) MB991219 for connector pin contact pressure should be used. The test probe should never be forcibly inserted, as it may cause a defective contact.

SWITCH POSITION		TEST CONNECTION		SPECIFIED CONDITION
		(MSC) MODULE 12 PIN	MOTOR	
LUMBAR MOTOR	SOFTER	7	1	Less than 2 ohms
	HARDER	2	2	Less than 2 ohms
RECLINER MOTOR	FORWARD	1	1	Less than 2 ohms
	BACK	8	5	Less than 2 ohms

ACTIVATION OF A MEMORY RECALL

All memory button seat position recalls will be refused while the vehicle is in any other gear select position other than "PARK" or "NEUTRAL". Memory recalls are also disabled if vehicle is in "PARK" or "NEUTRAL" but the vehicle speed is greater than 15km/h (see table below).

IGNITION	PARK	NEUTRAL	>15km/h	MEMORY RECALL POSSIBLE
N	X	X	N	Y
N	X	X	Y	N
Y	N	N	X	N
Y	Y	N	N	Y
Y	Y	N	Y	N
Y	N	Y	N	Y
Y	N	Y	Y	N

OPERATION CHECK OF POWER SEAT MOTOR

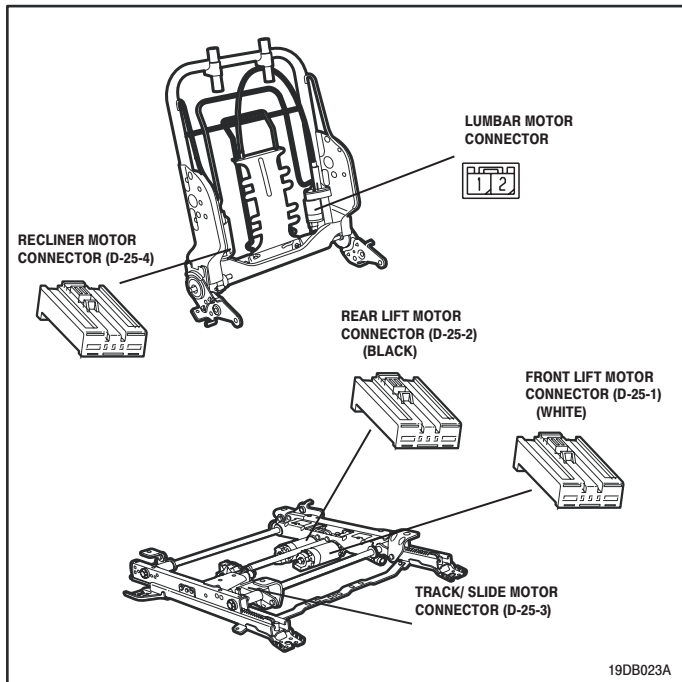
CIRCUIT DIAGRAMS:

- Refer to circuit diagrams GROUP-90
- Refer to configuration diagrams GROUP-80

NOTE: Check connectors and terminals for damage or loose connections at the seat harness and all supply circuits connections to seat. Repair or replace wiring harness if damaged.

MOTOR	DESCRIPTION	TERMINAL	MEASUREMENT
TRACK/ SLIDE MOTOR	BACKWARD	1	MOTOR ON= 12V
			MOTOR OFF = GROUND.
	FORWARD	2	MOTOR ON= 12V
			MOTOR OFF = GROUND.
FRONT LIFT MOTOR	UP	1- non memory 5- memory	MOTOR ON= 12V
			MOTOR OFF = GROUND.
	DOWN	5- non memory 1- memory	MOTOR ON= 12V
			MOTOR OFF = GROUND.
REAR LIFT MOTOR	UP	1	MOTOR ON= 12V
			MOTOR OFF = GROUND.
	DOWN	5	MOTOR ON= 12V
			MOTOR OFF = GROUND.
RECLINER MOTOR	FORWARD	1	MOTOR ON= 12V
			MOTOR OFF = GROUND.
	BACKWARD	5	MOTOR ON= 12V
			MOTOR OFF = GROUND.
LUMBAR MOTOR	SOFTER	1	MOTOR ON= 2.5V - 5V
			MOTOR OFF = GROUND.
	HARDER	2	MOTOR ON= 2.5V - 5V
			MOTOR OFF = GROUND.

1.If abnormality was found, check the power seat adjuster assembly.



CIRCUIT DIAGRAMS:

- Refer to circuit diagrams GROUP-90
- Refer to configuration diagrams GROUP-80

NOTE: Check connectors and terminals for damage or loose connections at the seat harness and all supply circuits connections to seat. Repair or replace wiring harness if damaged.

FAULT DIAGNOSIS

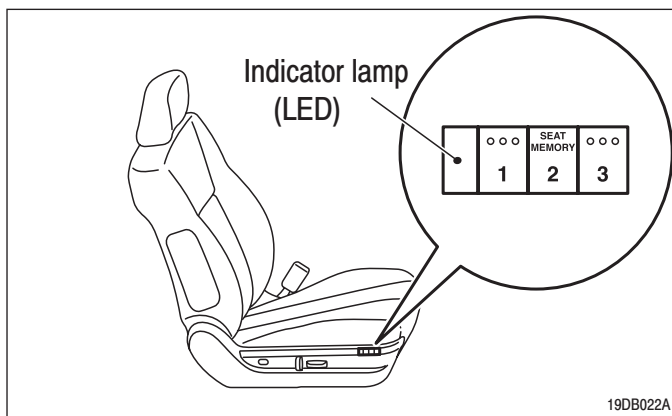
MEMORY SEAT CONTROLLER (MSC)

OPERATION OF DIAGNOSTICS:

The memory seat controller (MSC) stores specific fault codes for all functions of the (MSC). The diagnostics are specifically used to identify faults within the seat assembly, and as such will hinder the operation of the seat.

When a fault is detected in the (MSC), the system will automatically enter into diagnostic mode.

The indicator lamp (LED) will begin to flash in certain sequence to indicate a diagnostic trouble code (DTC) as shown in the table below. The indicator lamp (LED) will stop flashing when the faults have been resolved.



DIAGNOSTIC TROUBLE CODES (DTC's)

The indicator lamp (LED) transmits a certain sequence flash to distinguish faults. The DTC sequence for the most recent current trouble is flashed twice only. If there are multiple faults present, you can display the next current DTC by pressing the memory button 2 before the MSC goes into the sub-active mode. Once all DTC's have been cycled through, the most recent current DTC will be displayed. There will be no history of DTC's displayed.

LED FLASH SEQUENCE	FAULT CONDITION DETECTED	POSSIBLE CAUSE
2 then 1	No fore lift motor sensor	Connection at motor sensor or open/ short circuit in wiring harness.
2 then 2	No aft lift motor sensor	Connection at motor sensor or open/ short circuit in wiring harness.
2 then 3	No track motor sensor	Connection at motor sensor or open/ short circuit in wiring harness.
2 then 4	No pedal motor sensor	Connection at motor sensor or open/ short circuit in wiring harness.
2 then 5	No recliner motor sensor	Connection at motor sensor or open/ short circuit in wiring harness.
2 then 6	No lumbar motor sensor	Connection at motor sensor or open/ short circuit in wiring harness.
3 then 1	Button stuck MEMORY	Button switch cap stuck on side cover
3 then 2	Manual Button stuck position	Button switch cap stuck on side cover
6 then 3	Power relay welded shut	Grime on contact

CIRCUIT DIAGRAMS:

- Refer to circuit diagrams [GROUP-90](#)
- Refer to configuration diagrams [GROUP-80](#)

NOTE: Check connectors and terminals for damage or loose connections at the seat harness and all supply circuits connections to seat. Repair or replace wiring harness if damaged.

ERASING DIAGNOSTIC TROUBLE CODES (DTC's)

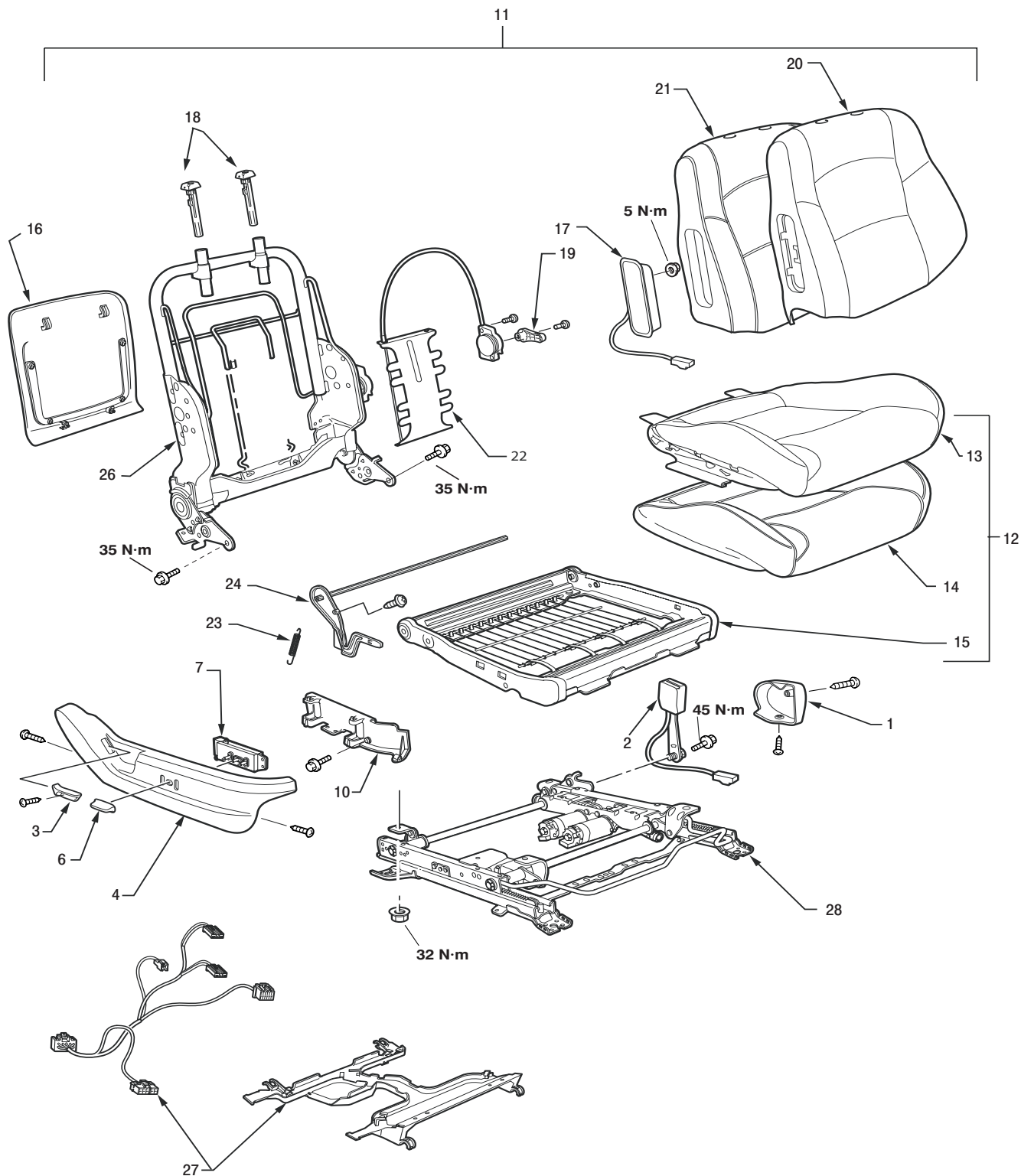
The Memory Seat Controller will temporarily store DTC's when incorrect operating conditions are detected. The DTC's are self-clearing as soon as each fault condition is rectified and returns to normal operating function.

DISASSEMBLY AND ASSEMBLY

M1522001500456

<RH SIDE>

RHS: 380 (fabric)



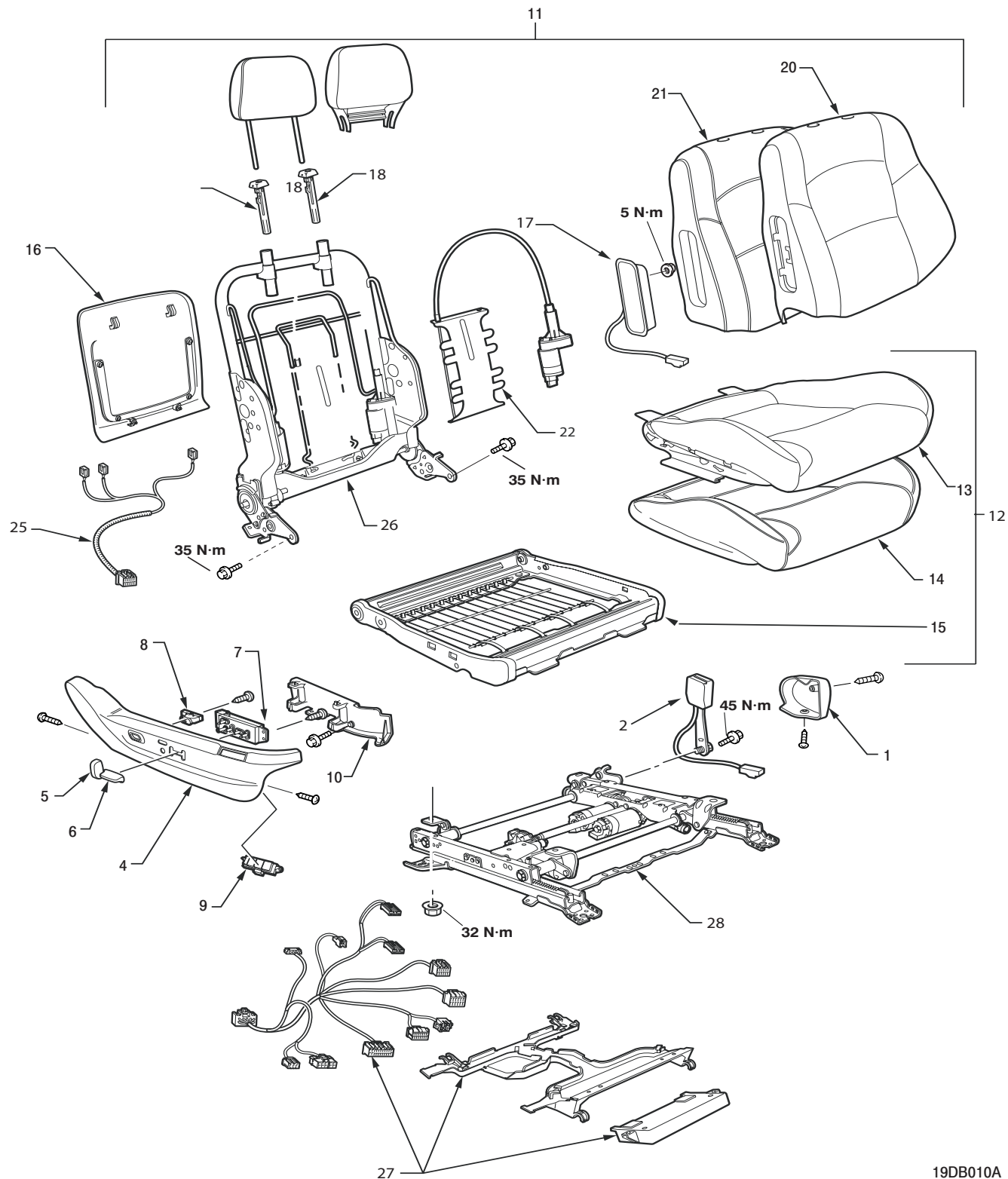
This exploded view diagram illustrates the assembly of a car seat. The components are numbered as follows:

- 1**: Side airbag module
- 2**: Side airbag mounting bracket
- 4**: Side airbag cover
- 7**: Side airbag cover mounting bracket
- 10**: Side airbag cover mounting bracket
- 12**: Seat cushion and backrest assembly
- 13**: Seat backrest
- 14**: Seat cushion
- 15**: Seat base
- 17**: Side airbag mounting bracket
- 18**: Side airbag mounting bracket
- 19**: Side airbag mounting bracket
- 20**: Side airbag cover
- 21**: Side airbag cover
- 22**: Side airbag mounting bracket
- 23**: Side airbag mounting bracket
- 24**: Side airbag mounting bracket
- 26**: Side airbag mounting bracket
- 27**: Side airbag mounting bracket
- 28**: Side airbag mounting bracket

Torque specifications are indicated for several fasteners:

- 5 N·m**: Torque for the side airbag mounting bracket (17).
- 35 N·m**: Torque for the side airbag mounting bracket (22).
- 45 N·m**: Torque for the side airbag mounting bracket (2).
- 32 N·m**: Torque for the side airbag mounting bracket (28).

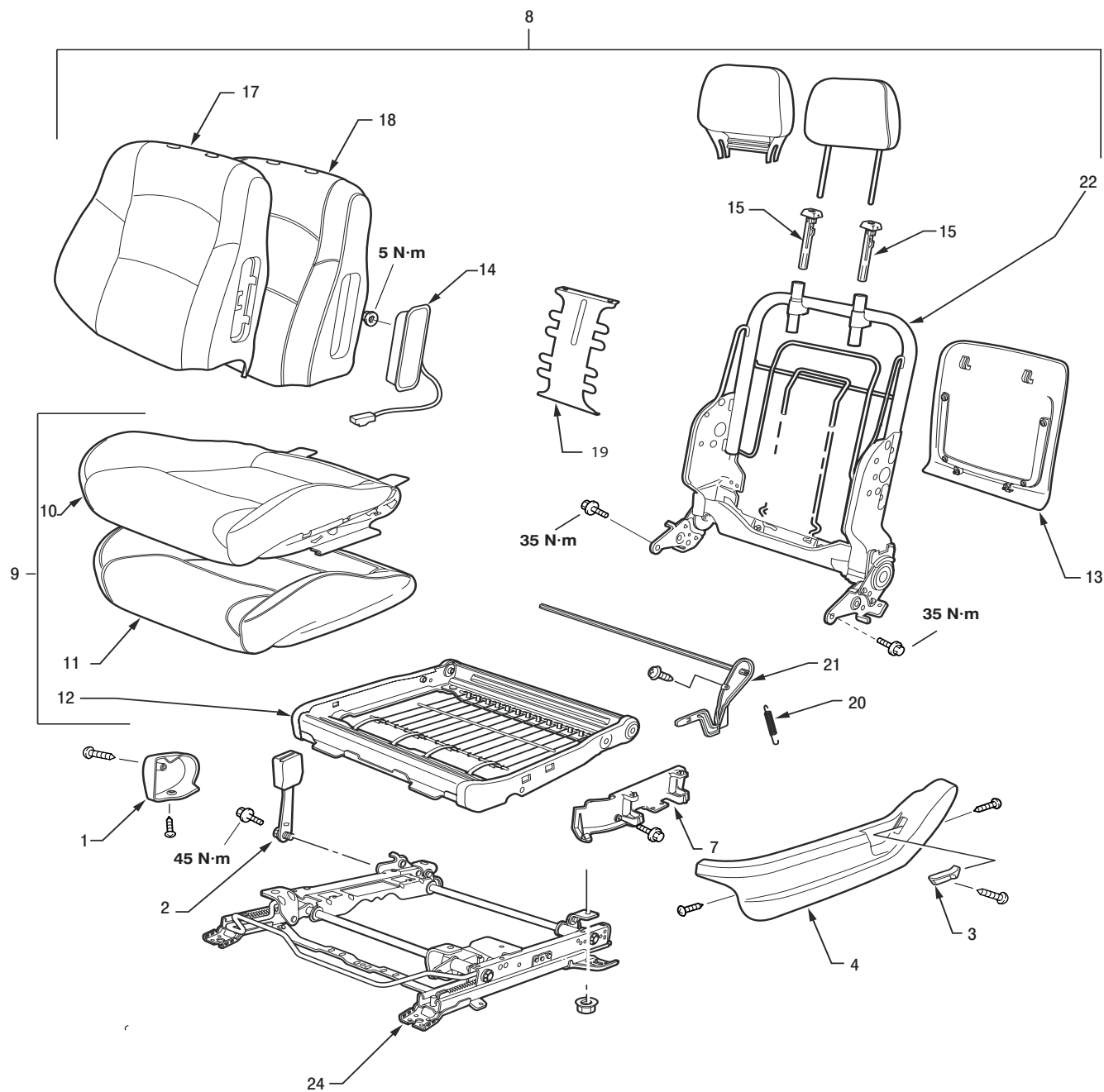
RHS: 380LS, 380LX, 380GT (leather)



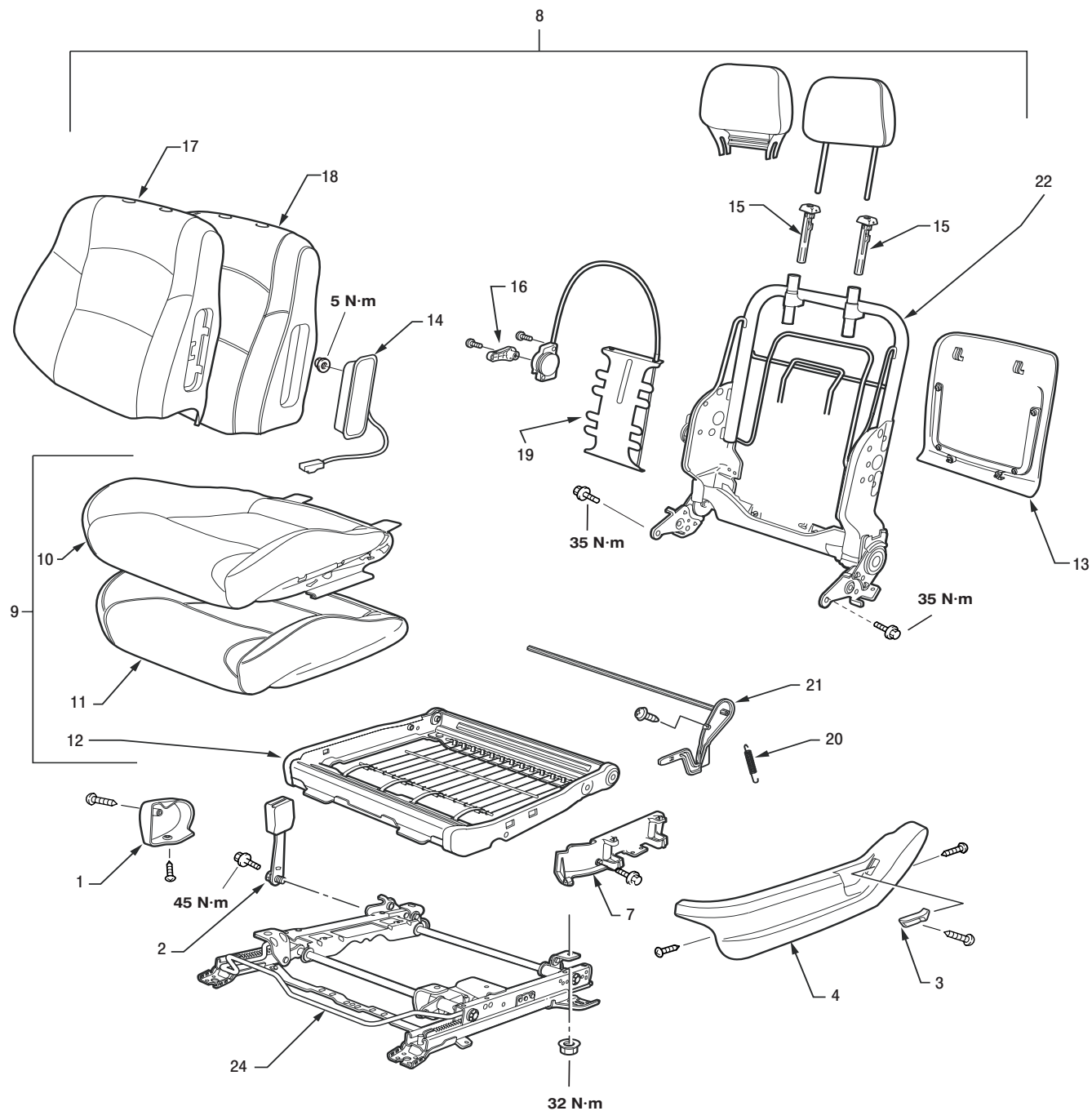
DISASSEMBLY STEPS		DISASSEMBLY STEPS	
<<A>>	HEADREST		13. SEAT CUSHION COVER
	1. HINGE COVER		14. SEAT CUSHION PAD
	2. INNER SEAT BELT		15. SEAT CUSHION FRAME
	3. MANUAL RECLINER ADJUSTER (VEHICLES WITH MANUAL RECLINER)		16. SEAT BACK PANEL
	4. SIDE SHIELD COVER	<>	17. SIDE AIRBAG MODULE
	5. POWER RECLINER ADJUSTER (VEHICLES WITH POWER RECLINER)		18. HEADREST GUIDE
	6. SEAT HEIGHT ADJUSTER KNOB	<<C>>	19. MANUAL LUMBAR ADJUSTER HANDLE
	7. MAIN POWER SWITCH		20. SEAT BACK COVER
	8. LUMBAR POWER SWITCH (VEHICLES WITH POWER RECLINER)		21. SEAT BACK PAD
	9. MEMORY BUTTON MODULE (VEHICLES WITH MEMORY SEATS)		22. LUMBAR ASSEMBLY
	10. SIDE SHIELD MOUNT BRACKET		23. RECLINER LEVER RETURN SPRING
	11. FRONT SEAT BACK ASSEMBLY		24. RECLINER LEVER SHAFT
	12. CUSHION ASSEMBLY		25. SEAT BACK PATCH HARNESS (VEHICLES FITTED WITH POWER SEAT BACK)
			26. SEAT BACK FRAME
			27. SEAT POWER HARNESS
			28. SEAT SLIDE ADJUSTER

<LH SIDE>

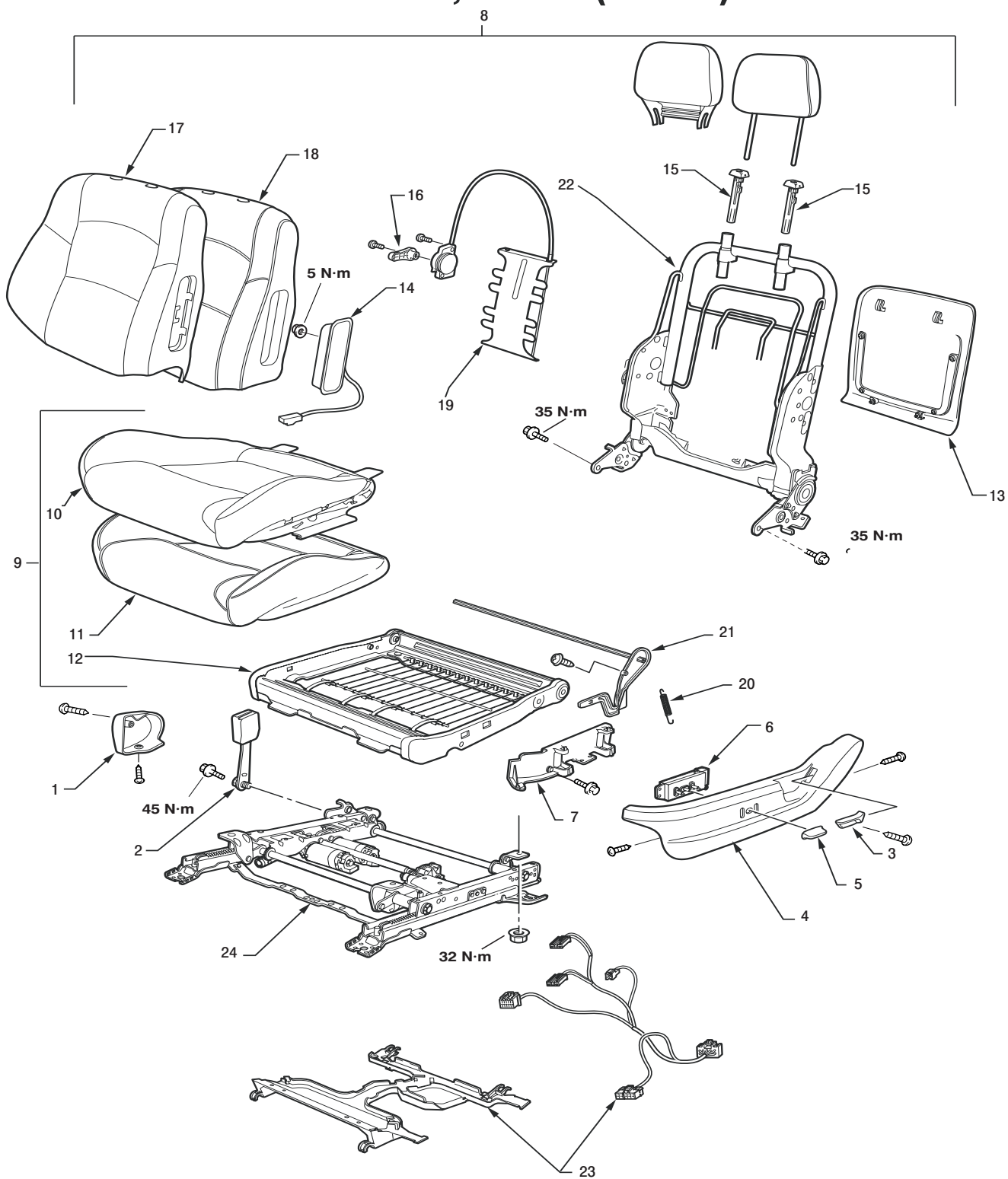
LHS: 380 (fabric), 380VRX (fabric and leather)



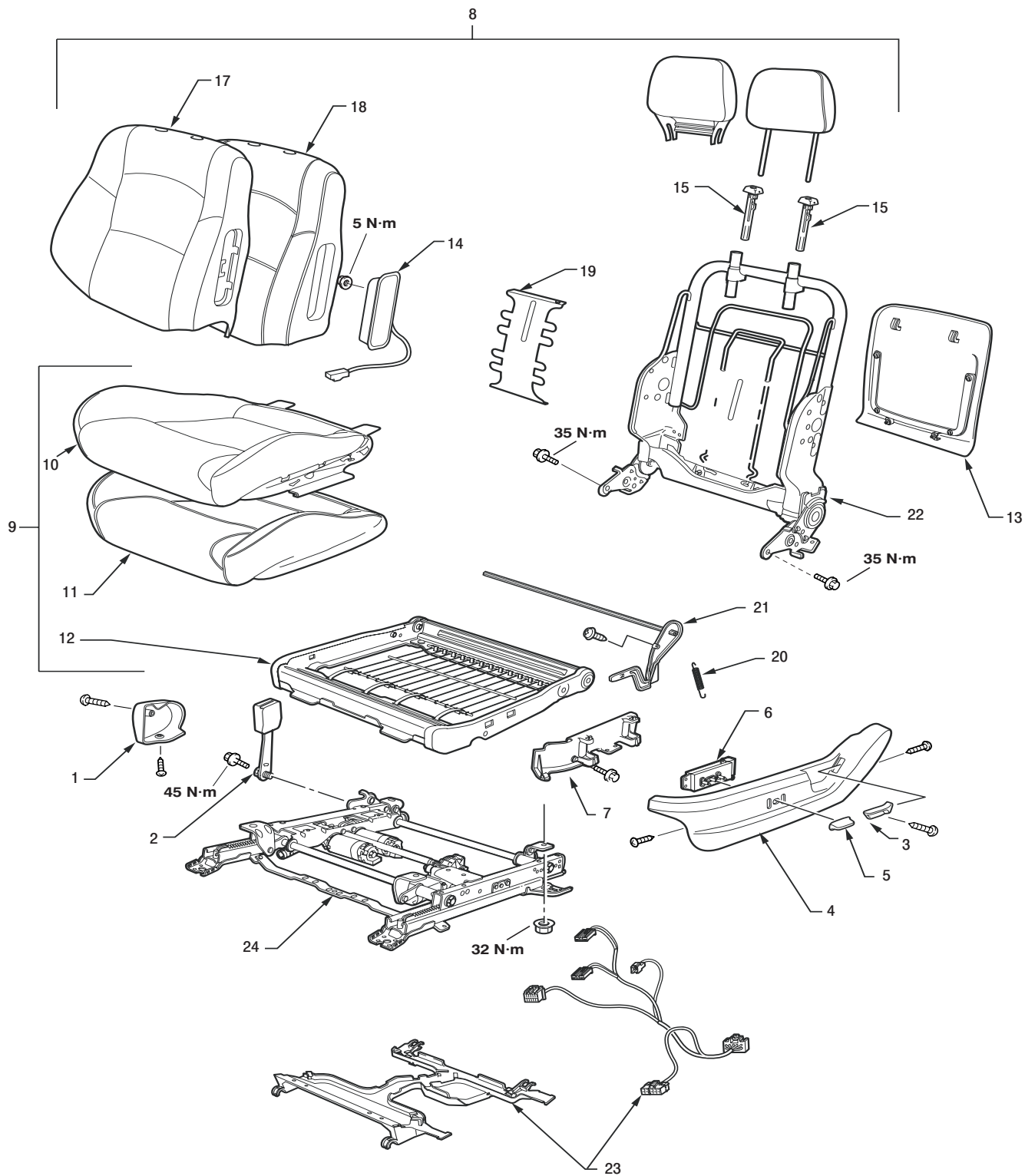
LHS: 380LS (fabric)



LHS: 380LS, 380LX (leather)



LHS: 380GT (leather)

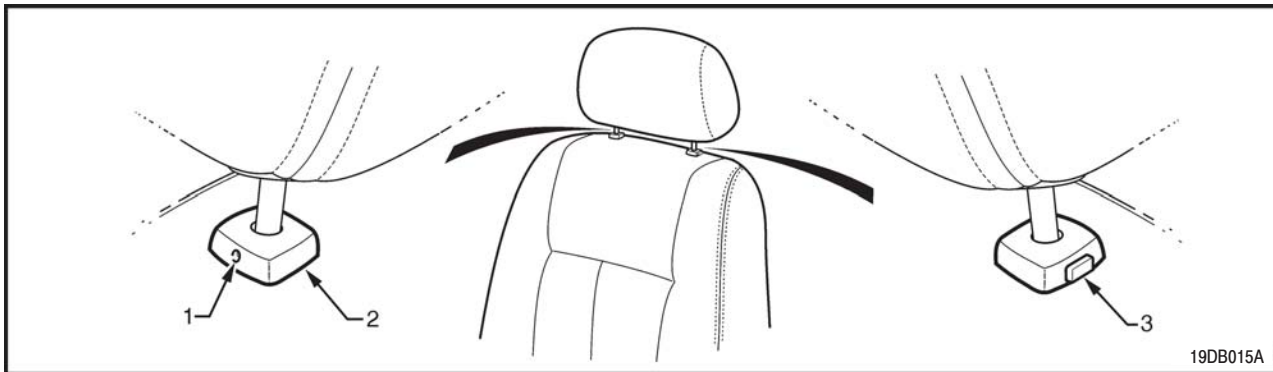


	REMOVAL STEPS		REMOVAL STEPS (Continued)
<<A>>	HEADREST		13. SEATBACK PANEL
	1. HINGE COVER		14. SIDE AIRBAG MODULE
	2. INNER SEAT BELT	<>	15. HEADREST GUIDE
	3. MANUAL RECLINER ADJUSTER HANDLE (VEHICLES WITH MANUAL RECLINER)		16. MANUAL LUMBAR ADJUSTER HANDLE
	4. SIDE SHIELD COVER	<<C>>	17. SEATBACK COVER
	5. FORE AFT ADJUSTER KNOB		18. SEATBACK PAD
	6. MAIN POWER SWITCH		19. LUMBAR ASSEMBLY
	7. SIDE SHIELD MOUNT BRACKET		20. RECLINER LEVER RETURN SPRING
	8. FRONT SEAT BACK ASSEMBLY		21. RECLINER LEVER SHAFT
	9. CUSHION ASSEMBLY		22. SEAT BACK FRAME
	10. SEAT CUSHION COVER		23. SEAT POWER HARNESS
	11. SEAT CUSHION PAD		24. SEAT SLIDE ADJUSTER
	12. SEAT CUSHION FRAME		

REMOVAL SERVICE POINT

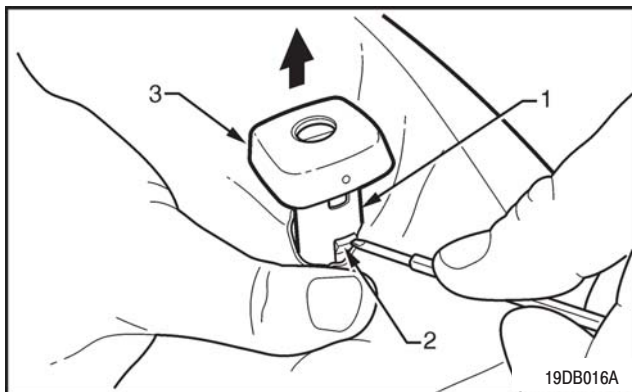
<<A>> HEADREST REMOVAL

1. Raise the head restraint fully.
2. Insert a probe that is suited to fit into the hole (1) in the right hand head restraint sleeve (2) as illustrated in the figure below.
3. Whilst the probe is inserted slightly, apply slight pressure on the head restraint. Apply and hold pressure upwards.
4. To remove the head restraint, you must depress the sleeve height adjuster lock (3) on the left-hand head restraint sleeve as illustrated below.



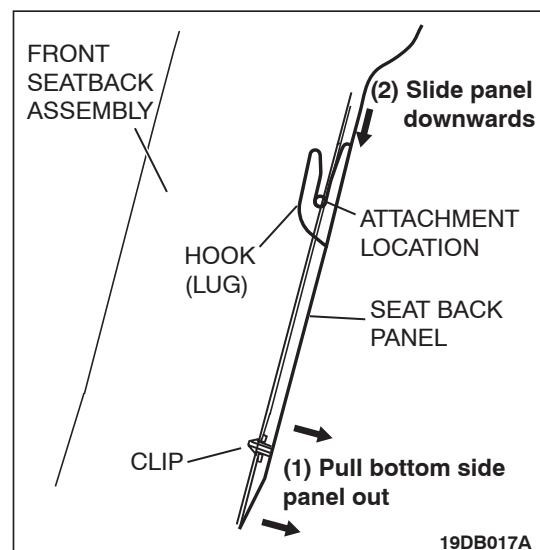
<> HEADREST SLEEVE REMOVAL

1. To reveal upper portion of the seat back frame or active head restraint frame (1) as shown in figure below, push down on the surrounding seat cover.
2. By using a small flat blade screwdriver, depress the sleeve locking tab (2), and remove the head restraint sleeve (3) in upwards movement from the frame as illustrated below.
3. If required, repeat process for the remaining sleeve.



<<C>> SEAT BACK PANEL REMOVAL AND FITMENT

1. Move front seat to the most forward position.
2. Pull the lower edge of seat panel towards you, as shown below (1).
3. Slide the panel downwards (2) as the top section is held in by 2 locating hooks (lugs).



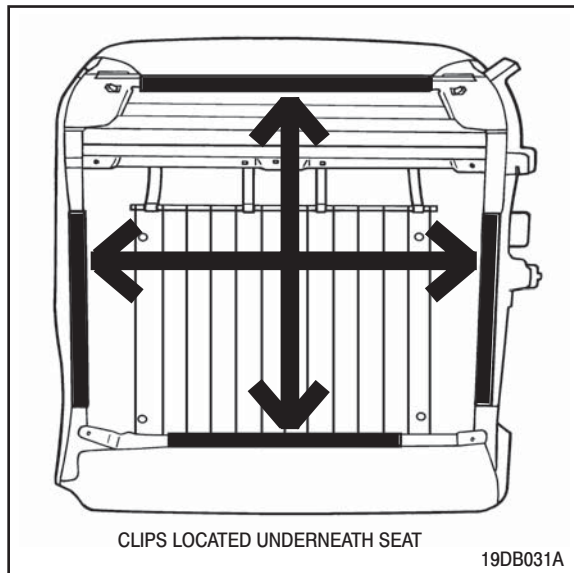
4. Upon fitment, be sure to firstly locate the top 2 lugs into position (2), as shown above.
5. Approximately square up panel to the seat, so by doing this you will be able to locate the bottom 2 clips to press in the panel (1), as shown above.

FRONT SEAT TRIM COVER

REMOVAL AND FITMENT

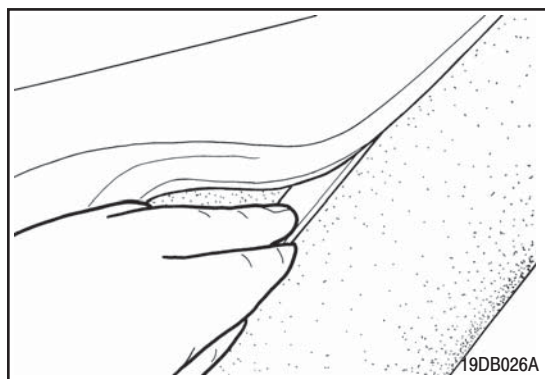
REMOVAL

1. Remove seat from vehicle and cushion or seat back assembly as required. Remove all seat plastic covers etc.
2. Unclip all the plastic retainer clips at the rear of the trim cover. This is typical for the cushion and the back of the seat.



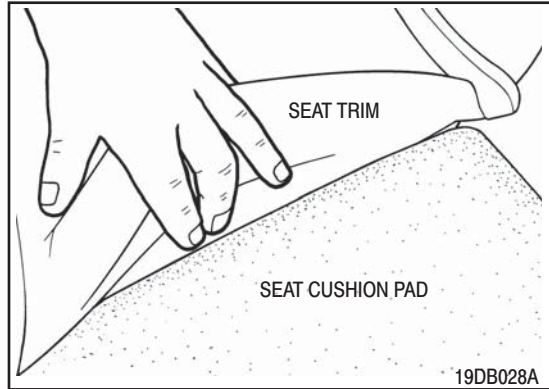
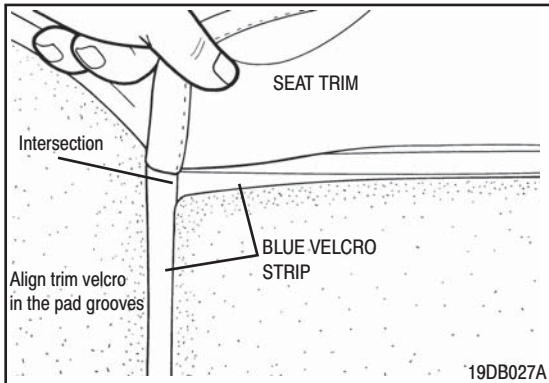
3. Peel cover away from the foam pad.

NOTE: Place a finger on the Blue Velcro strip when peeling the cover to prevent the strip being pulled out of the foam pad.

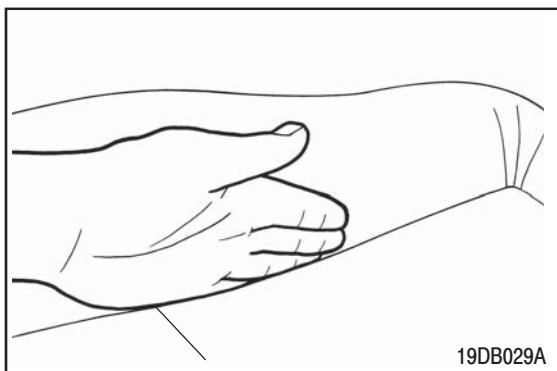


FITMENT

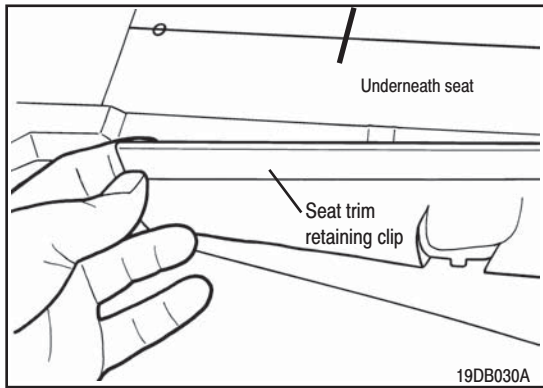
1. Locate the new trim onto the pad by aligning the Velcro strip with the grooves. Use an intersection in order to align both directions. Whenever possible work from the centre of the trim toward the outside.



2. Push the Velcro strips into place along all the grooves.



3. Pull the cover over the outside of the pad and reattach the retaining clips where required.



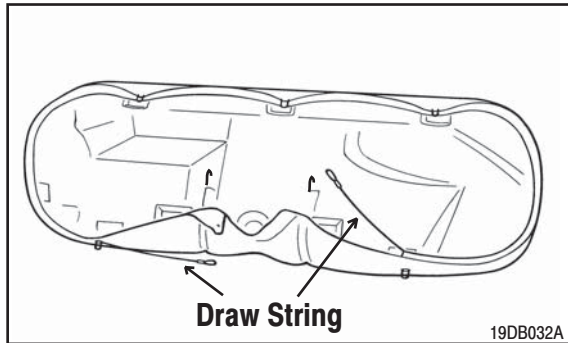
NOTE: It may be necessary to make some adjustment and work the cover into position to remove creases. Reassemble seat and fit to vehicle.

REAR SEAT CUSHION TRIM COVER

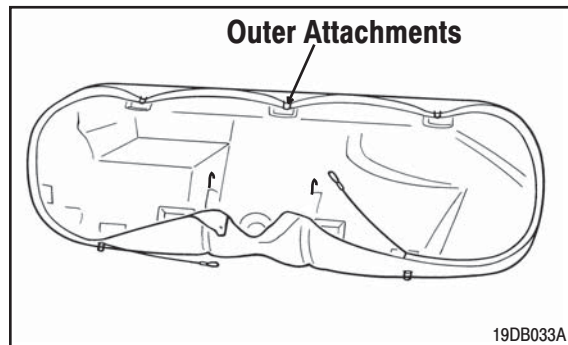
REMOVAL AND FITMENT

REAR SEAT CUSHION TRIM REMOVAL

1. Remove rear seat cushion from vehicle.
2. Release the trim cover draw string.

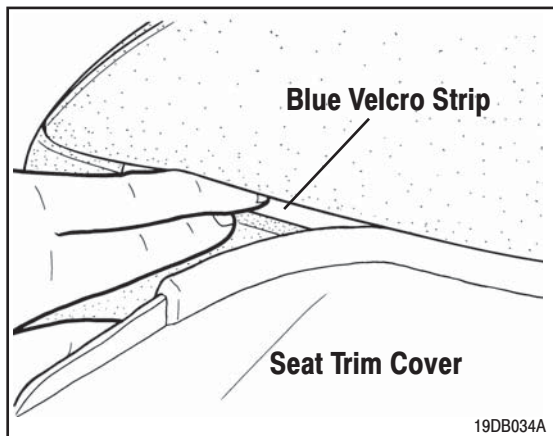


3. Release all outer cover attachment points.



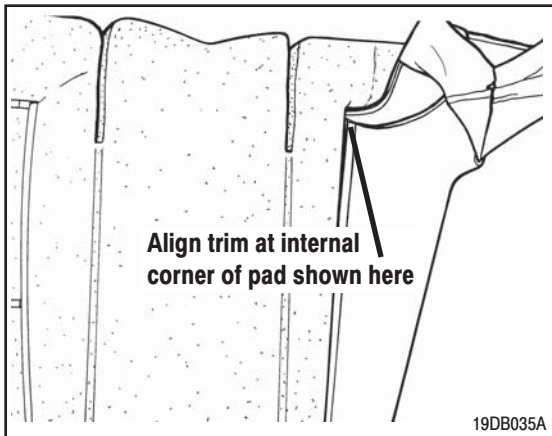
4. Peel cover away from the foam pad.

NOTE: Place a finger on the Blue Velcro strip when peeling the cover to prevent the strip being pulled out of the foam pad.

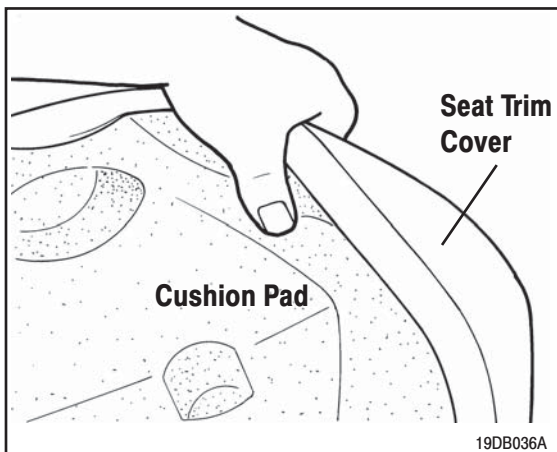


REAR SEAT CUSHION TRIM FITMENT

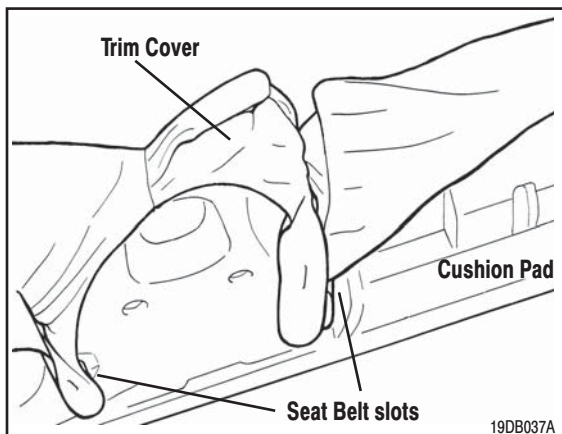
1. Locate the new trim onto the pad by aligning the Velcro strip with the grooves. Use an intersection in order to align both directions. Whenever possible work from the centre of the trim toward the outside.



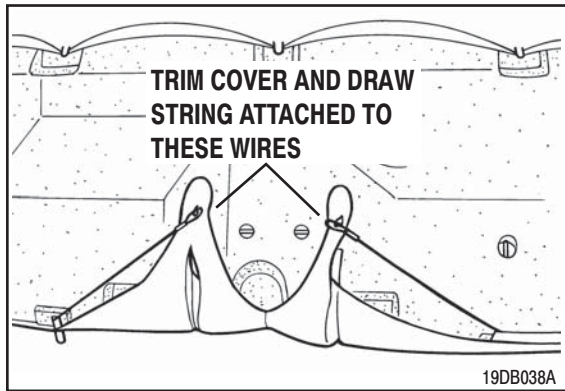
2. Pull the cover around the sides of the pad.



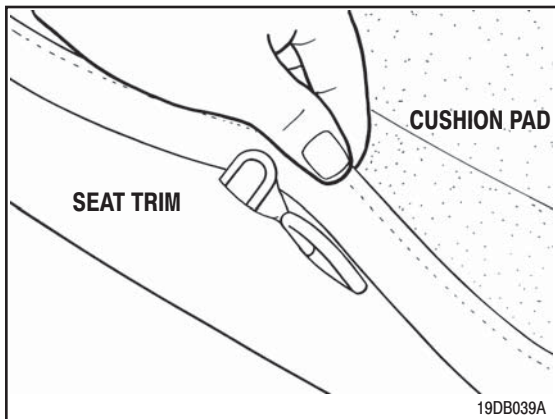
3. Pull trim through the seat belt slots as shown and attach to wires



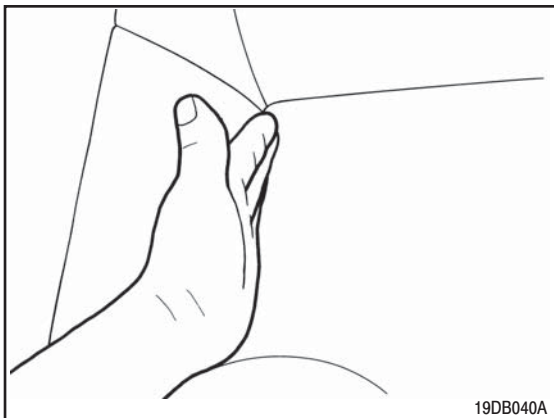
4. Pull draw string and attach to the centre wire as shown.



5. Reattach all outer points.



6. Work the trim into all the grooves and adjust if necessary to remove creases as shown.

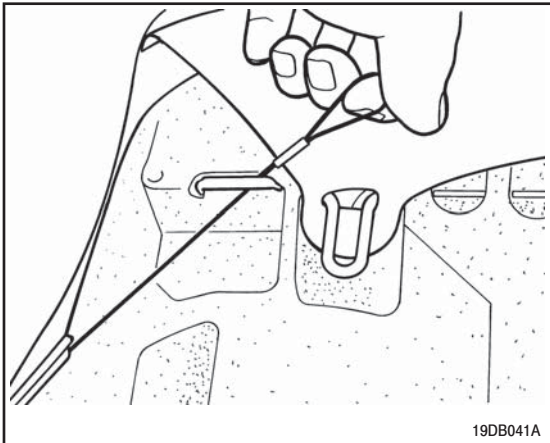


REAR SEAT BACK TRIM COVER

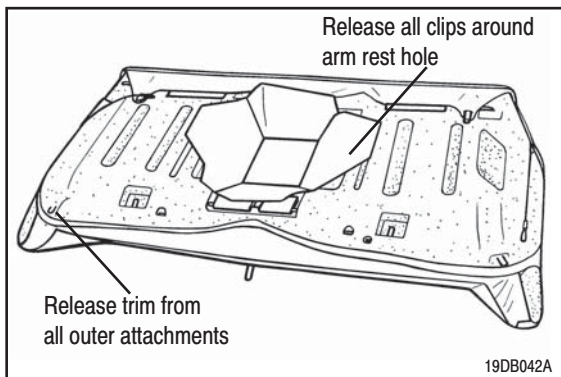
REMOVAL AND FITMENT

REAR SEAT BACK TRIM REMOVAL

1. Remove rear seat back from the vehicle, and remove arm rest and arm rest pivot bushes from rear seat back.
2. Release the draw string.

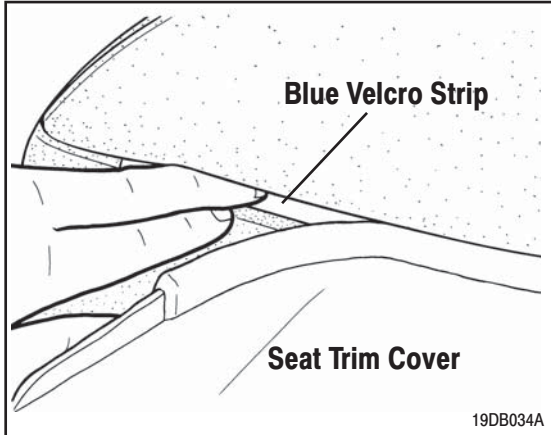


3. Release all outer attachment points. Release all the centre clips.



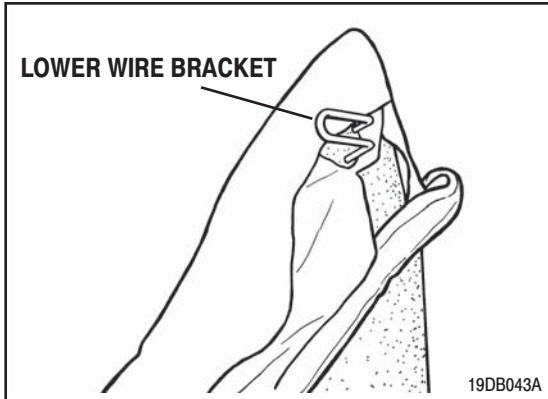
4. Peel cover away from the foam pad.

NOTE: Place a finger on the Blue Velcro strip when peeling the cover to prevent the strip being pulled out of the foam pad.

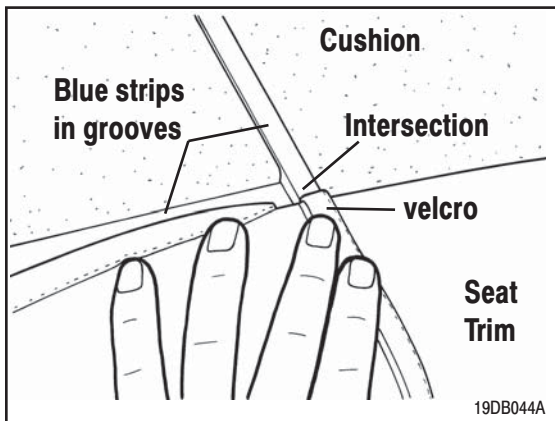


REAR SEAT BACK TRIM FITMENT

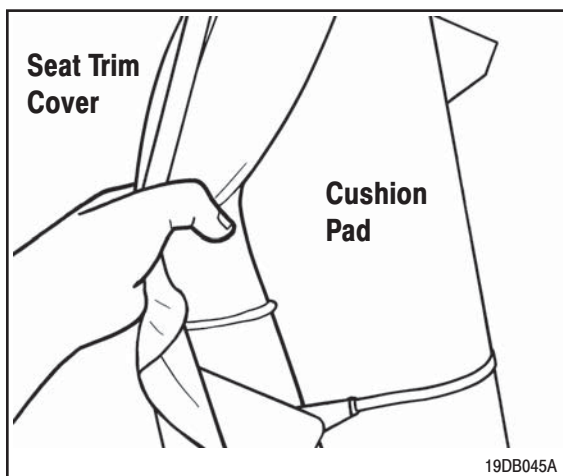
1. Fit the trim over the lower wire brackets.



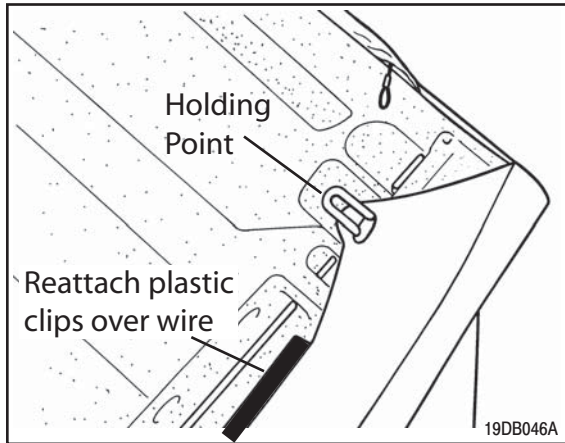
2. Locate the new trim onto the pad by aligning the Velcro strip with the grooves. Use an intersection in order to align both directions. Whenever possible work from the centre of the trim toward the outside.



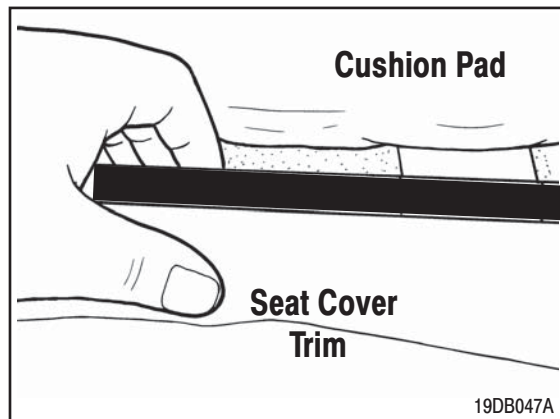
3. When all the grooves are aligned pull the cover over the pad.



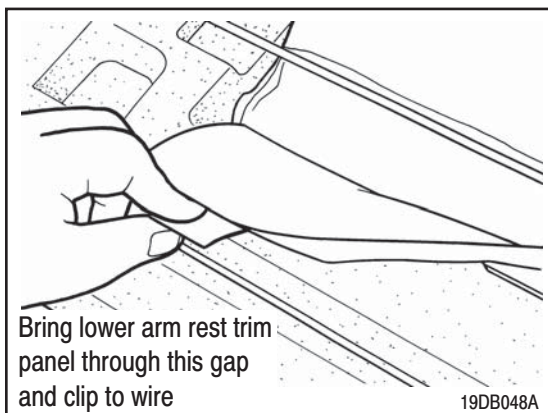
4. Reattach the upper trim holding points including the plastic clips.



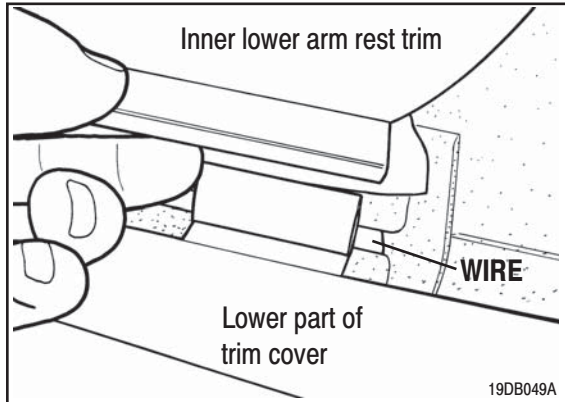
5. Attach the centre lower trim hold points.



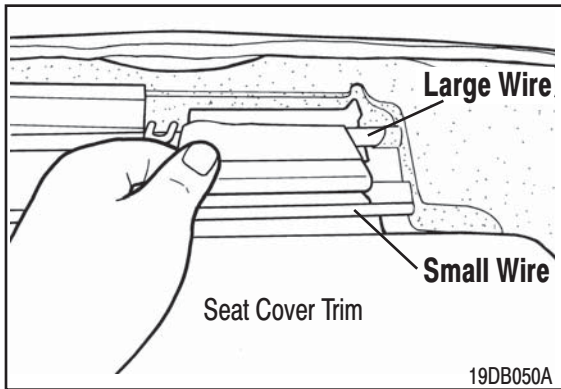
6. Attach the clips around the arm rest as shown.



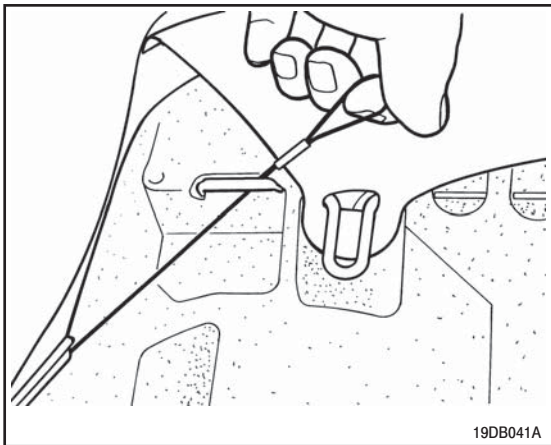
7. Pull inner lower arm rest trim through the hole and clip to retainer attached to the lower part of the trim cover.



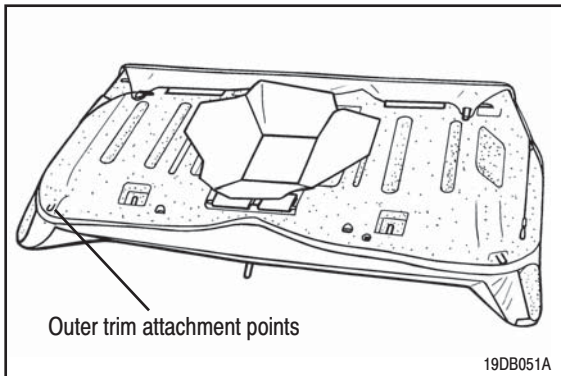
8. Pull the upper arm rest trim through the hole over the large wire and clip to the small wire as shown.



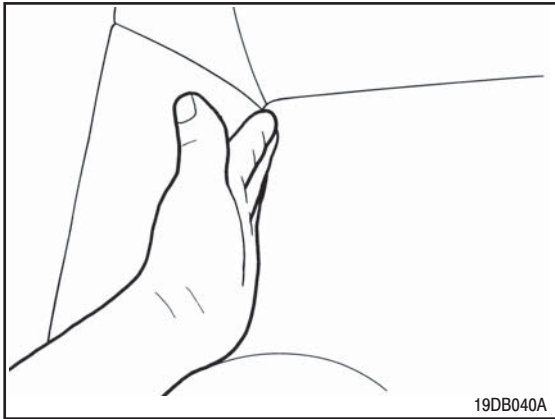
9. Pull the draw string and attach to the wire attachment points shown.



10. Attach all the outer trim attachment points.



11. Work in all the seams, and adjust as required to remove any creases.

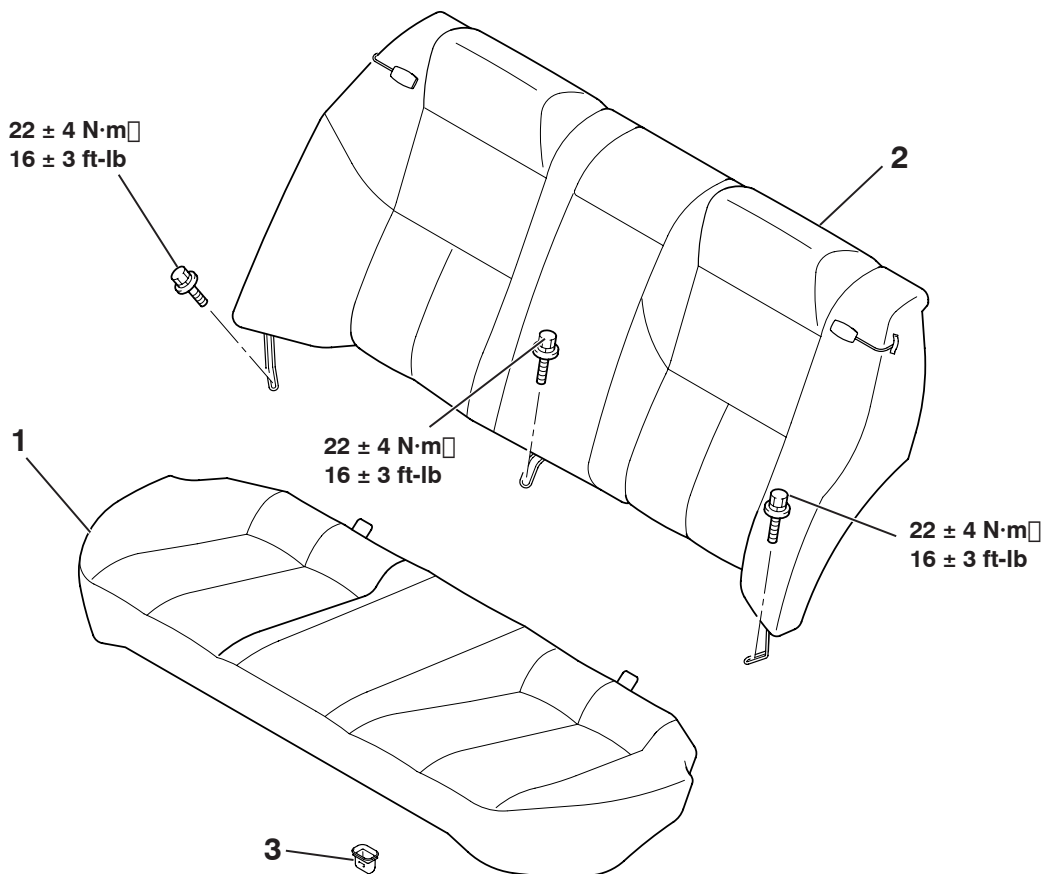


12. Fit seat back to vehicle in reverse order of removal.

REAR SEAT ASSEMBLY

REMOVAL AND INSTALLATION

M1522001800297



AC306948AB

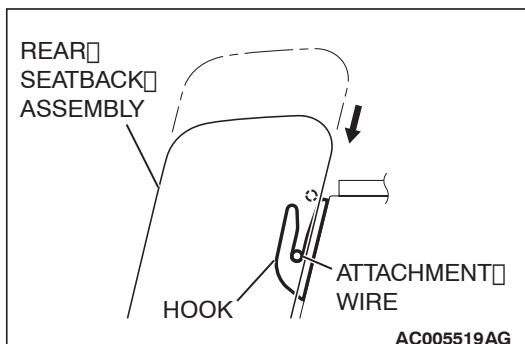
- >>B<<** 1. **REMOVAL STEPS**
REAR SEAT CUSHION
ASSEMBLY

- >>A<<** 2. **REMOVAL STEPS (Continued)**
REAR SEATBACK ASSEMBLY
3. REAR SEAT HOOK

INSTALLATION SERVICE POINTS

>>A<< INSTALLATION OF REAR SEATBACK ASSEMBLY

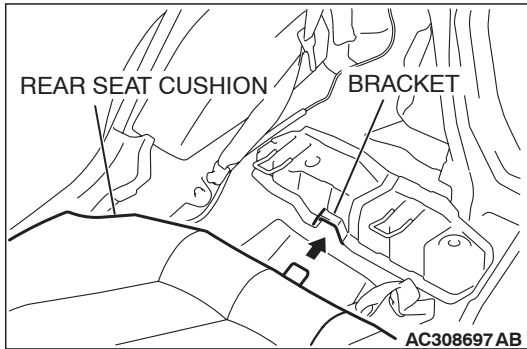
Press the rear seatback assembly in the direction shown in the illustration and fit the attachment wire into the hook securely to install the rear seatback assembly. Confirm that back is hooked and secured by pulling forward.



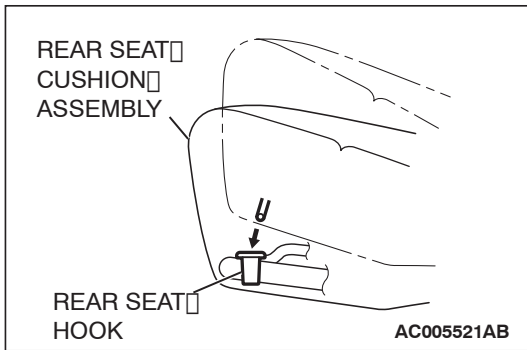
AC005519AG

>>B<< INSTALLATION OF REAR SEAT CUSHION ASSEMBLY

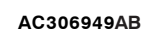
1. Fit the rear seat cushion into the bracket securely.



2. Fit the rear seat cushion into the rear seat hook securely.



M1522002000357



DISASSEMBLY STEPS

6. ARMREST PAD
8. SEATBACK COVER
9. SEATBACK PAD

FRONT SEAT BELT

REMOVAL AND INSTALLATION

M1523001300370

CAUTION

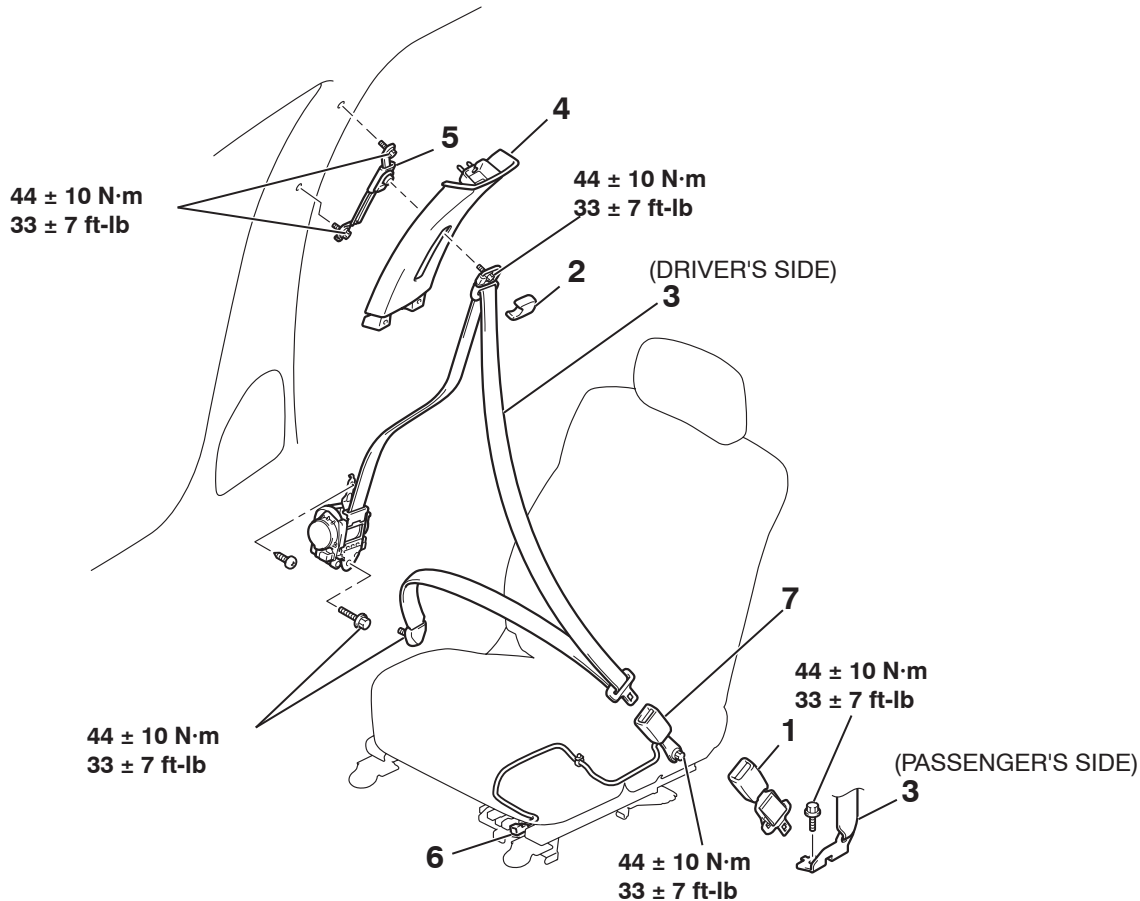
- **SRS:** Before removing and installing the seat belts with pre-tensioner, refer to **GROUP 52B, Seat Belt with Pre-tensioner P.52B-250.**

Pre-removal and Post-installation Operation

- Turn the ignition key to the LOCK (OFF) position.
- Disconnect the negative battery terminal.

Post-installation Operation

Adjustment Procedures of Special Function (refer to **GROUP 52B, On-Vehicle Service P.52B-250.**)



19DB020A

1. EXTENDER SEAT BELT ASSEMBLY*
 2. SASH GUIDE COVER
 3. OUTER SEAT BELT (REFER TO **GROUP 52B, SEAT BELTS WITH PRE-TENSIONER P.52B-250.**)
- OUTER SEAT BELT REMOVAL STEPS**

OUTER SEAT BELT REMOVAL STEPS (Continued)

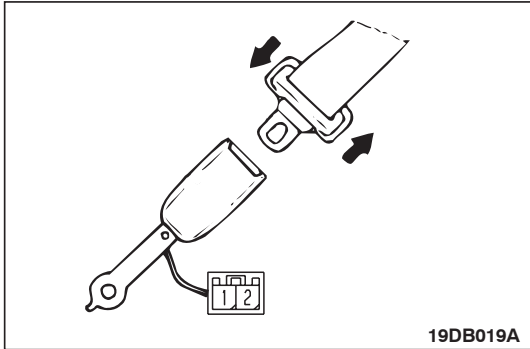
4. CENTER PILLAR TRIM UPPER (REFER TO **P.52A-11.**)
5. ADJUSTABLE SEAT BELT ANCHOR
6. SEAT BELT SWITCH CONNECTOR
7. INNER SEAT BELT

NOTE: *If so equipped

INSPECTION

M1523004400116

SEAT BELT SWITCH CONTINUITY CHECK

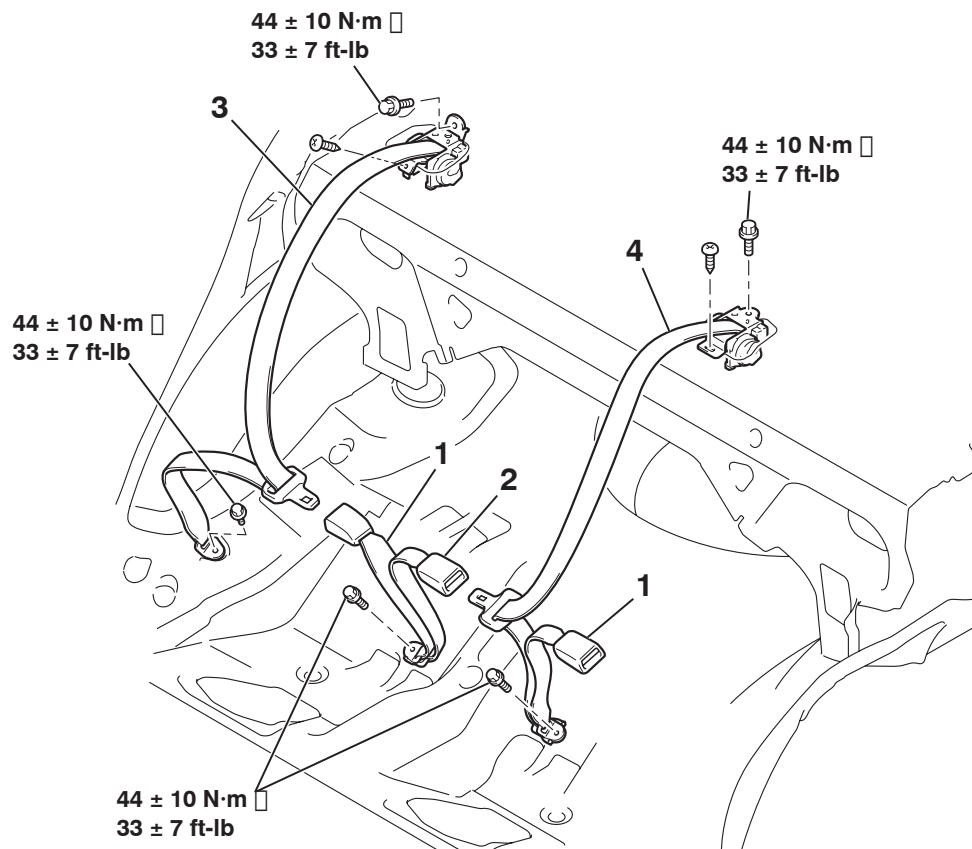


ITEM	TESTER CONNECTION	SPECIFIED CONDITION
Fastened seat belt	1 – 2	Open circuit
Unfastened seat belt	1 – 2	Less than 2 ohms

REAR SEAT BELT

REMOVAL AND INSTALLATION

M1523001600371



AC307024 AB

REMOVAL STEPS

- REAR SEAT CUSHION ASSEMBLY (REFER TO [P.52A-55.](#))
- 1. INNER SEAT BELT
- 2. CENTER SEAT BELT INNER

REMOVAL STEPS (Continued)

- REAR SHELF TRIM (REFER TO [P.52A-11.](#))
- 3. OUTER SEAT BELT
- 4. CENTER SEAT BELT OUTER

SPECIFICATIONS

FASTENER TIGHTENING SPECIFICATIONS

M1521004100227

ITEM	SPECIFICATION
FRONT SEAT	
Front seatback assembly bolt	44 ± 10 N·m (33 ± 7 ft-lb)
Front seat cushion assembly bolt	12 ± 2 N·m (102 ± 22 in-lb)
Front seat bolt	44 ± 10 N·m (33 ± 7 ft-lb)
Front seat nut	30 ± 5 N·m (22 ± 4 ft-lb)
REAR SEAT	
Seatback assembly bolt	22 ± 4 N·m (16 ± 3 ft-lb)
FRONT SEAT BELT	
Adjustable seat belt anchor bolt	44 ± 10 N·m (33 ± 7 ft-lb)
Inner seat belt bolt	44 ± 10 N·m (33 ± 7 ft-lb)
Outer seat belt bolt	44 ± 10 N·m (33 ± 7 ft-lb)
REAR SEAT BELT	
Center seat belt outer and inner seat belt bolt	44 ± 10 N·m (33 ± 7 ft-lb)
Inner seat belt bolt	44 ± 10 N·m (33 ± 7 ft-lb)
Seat belt shoulder anchor bolt	44 ± 10 N·m (33 ± 7 ft-lb)
Seat belt lower anchor bolt	44 ± 10 N·m (33 ± 7 ft-lb)