

GROUP 21A

CLUTCH

CONTENTS

GENERAL INFORMATION	21A-2	CLUTCH PEDAL.....	21A-4
SERVICE SPECIFICATIONS.....	21A-2	REMOVAL AND INSTALLATION	21A-4
LUBRICANTS	21A-2	CLUTCH CONTROL.....	21A-5
ON-VEHICLE SERVICE.....	21A-2	REMOVAL AND INSTALLATION	21A-5
CLUTCH PEDAL CHECK AND		INSPECTION.....	21A-6
ADJUSTMENT	21A-2	DISASSEMBLY AND REASSEMBLY	21A-7
CLUTCH BLEEDING	21A-3	INSPECTION.....	21A-8

GENERAL INFORMATION

M1211000100234

The clutch is a dry single-disc, diaphragm type; hydraulic pressure is used for the clutch control. The clutch shares a brake fluid reservoir with the brake system.

SERVICE SPECIFICATIONS

M1211000300227

Item	Standard value
Clutch pedal height (mm)	183 – 186
Clutch pedal clevis pin play (mm)	1 – 3
Clutch pedal free play clearance (mm)	0.5 – 1.5
Distance between the clutch pedal and the clutch pedal stopper when the clutch pedal is released (mm)	35 or more

LUBRICANTS

M1211000400183

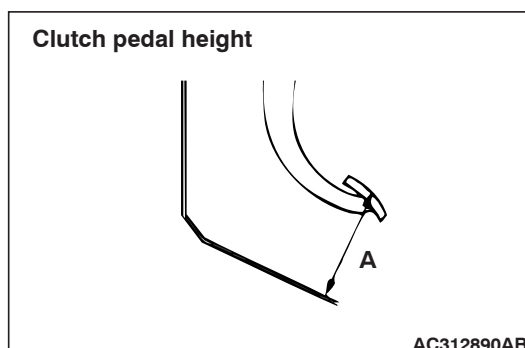
Item	Specified lubricant	Quantity
Clutch fluid	Brake Fluid DOT 3 or DOT 4	As required
Pushrod assembly	Rubber grease	As required
Boot	Rubber grease	As required
Release cylinder push rod	MITSUBISHI genuine grease Part No.0101011	As required

ON-VEHICLE SERVICE

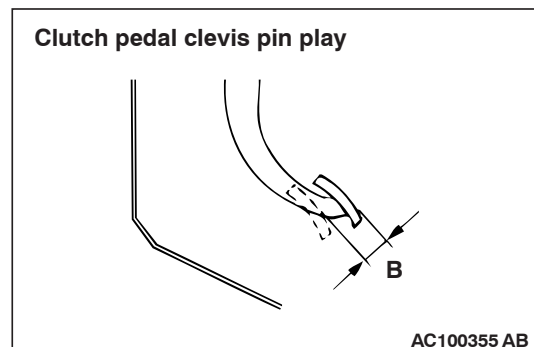
CLUTCH PEDAL CHECK AND ADJUSTMENT

M1211000900285

1. Turn up the carpet, etc. under the clutch pedal.



2. Measure the clutch pedal height.
Standard value (A): 183 – 186 mm

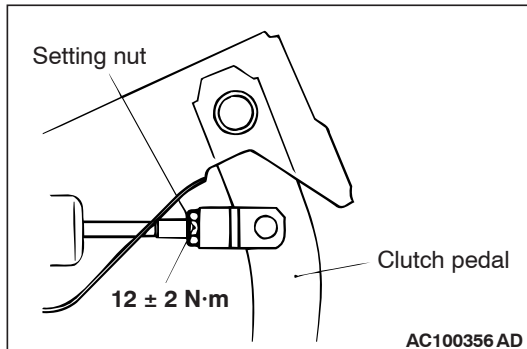


3. Measure the clutch pedal clevis pin play.
Standard value (B): 1 – 3 mm

⚠ CAUTION

Do not push in the master cylinder pushrod at this time, otherwise the clutch will not operate properly.

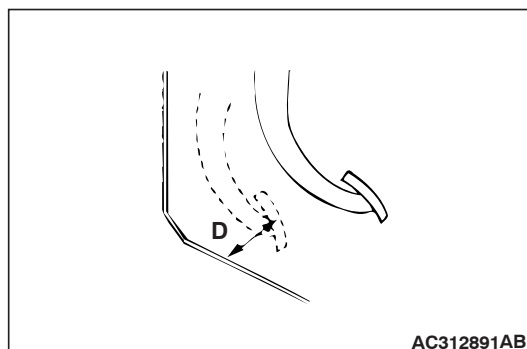
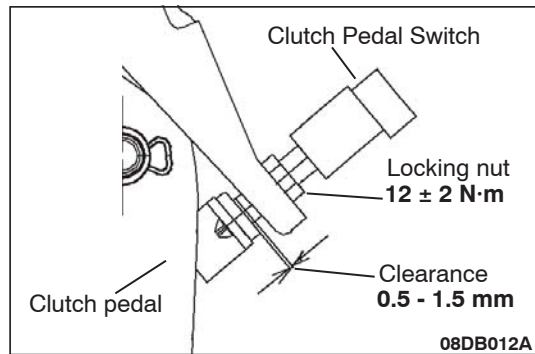
4. If the clutch pedal height and clutch pedal clevis pin play are not within the standard value, loosen the setting nut to adjust the clutch pedal height and clevis pin play to the standard value.



5. Check the clutch pedal switch clearance is within specification when pedal height is adjusted correctly and is positioned at rest. If adjustment is required, loosen nut and rotate switch to achieve correct clearance.

Switch clearance value (C): 0.5 – 1.5 mm

Nut tightening torque : 10 - 15 Nm



6. After completing the adjustments, confirm that the clutch pedal free play clearance (measured between pedal switch and bracket) and the distance between the clutch pedal (the face of the pedal pad) and the clutch pedal stopper when the clutch is disengaged are within the standard value ranges.

Standard value (C): 0.5 – 1.5 mm

Standard value (D): 35 mm or more

7. If the clutch pedal free play and the distance between the clutch pedal and the clutch pedal stopper or toeboard when the clutch is disengaged do not agree with the standard values, it is probably the result of either air in the hydraulic system or a faulty master cylinder, release cylinder or clutch. Bleed the air, or disassemble and inspect the master cylinder, release cylinder or clutch.

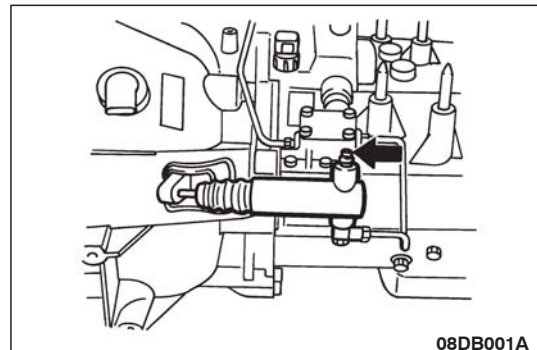
CLUTCH BLEEDING

M1211001400205

⚠ CAUTION

Use the specified brake fluid. Do not mix brake fluids.

Specified fluid: Brake fluid DOT 3 or DOT 4

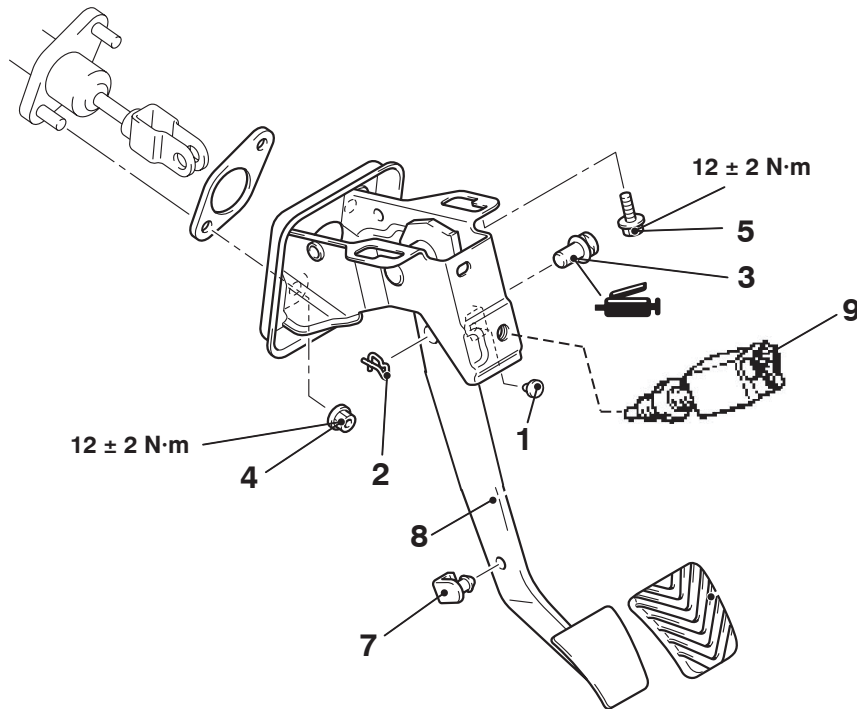


1. Connect a hose with a bottle to the bleeder screw.
2. Open the bleed nipple.
3. Depress the clutch pedal slowly. Open the bleeder screw to let air and brake fluid out. Close the bleeder screw. Release the clutch pedal. Repeat until only brake fluid and no air comes out.
4. Check that the brake fluid reservoir level stays between "MAX" and "MIN" marks throughout the clutch bleeding process.

CLUTCH PEDAL

REMOVAL AND INSTALLATION

M1211001600232

Post-installation OperationClutch Pedal Adjustment (Refer to [P.21A-2](#)).

08DB002A

Removal steps

- Instrument panel under cover (Refer to GROUP 52A, Instrument panel [52A-4](#)).
- 1. Stopper
- 2. Snap pin
- 3. Clevis pin
- 4. Clutch master cylinder mounting nut

Removal steps (Continued)

- 5. Clutch pedal assembly mounting bolt
- 6. Pedal pad
- 7. Pedal stopper
- 8. Clutch pedal assembly
- 8. Clutch pedal switch

CLUTCH CONTROL

REMOVAL AND INSTALLATION

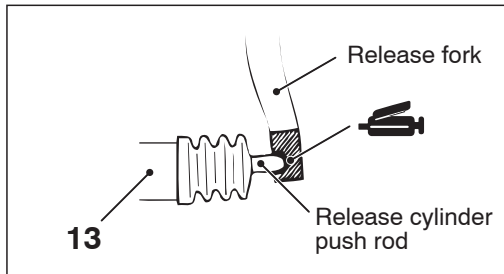
M1211001900255

Pre-removal Operation

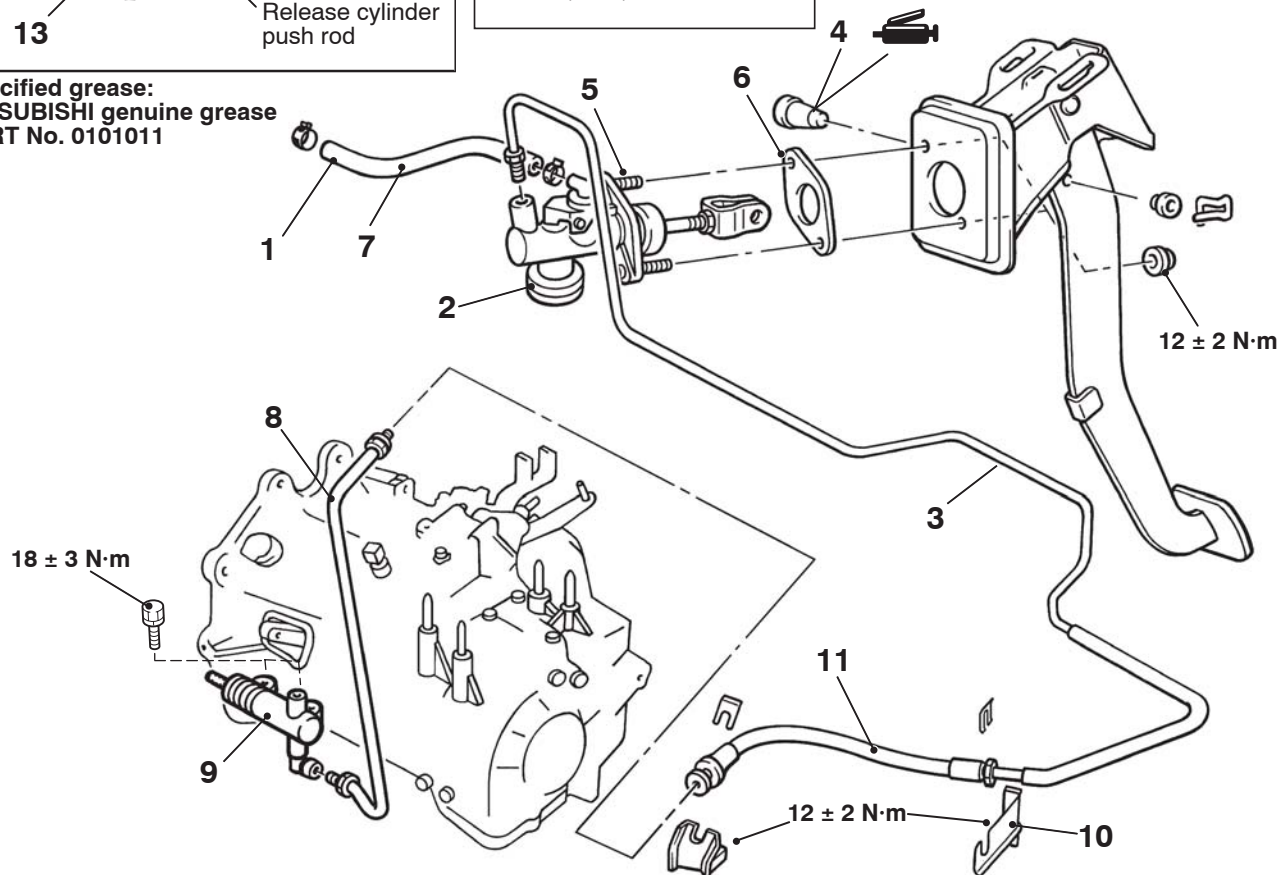
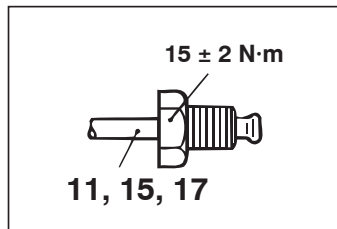
Clutch Fluid Draining

Post-installation Operation

- Clutch Fluid Supplying
- Clutch Line Bleeding (Refer to [P.21A-3](#)).
- Clutch Pedal Adjustment (Refer to [P.21A-2](#)).



Specified grease:
MITSUBISHI genuine grease
PART No. 0101011

**Clutch master cylinder removal steps**

1. Reservoir hose and brake fluid reservoir connection
2. Clutch damper
3. Clutch pipe assembly
 - Brake master cylinder assembly and brake booster (Refer to GROUP 35A, Master cylinder assembly and brake booster [35A-26](#).)
4. Clevis pin

Clutch master cylinder removal steps (Continued)

5. Clutch master cylinder
6. Sealer
7. Reservoir hose

Clutch release cylinder removal steps

8. Clutch tube assembly
9. Clutch release cylinder

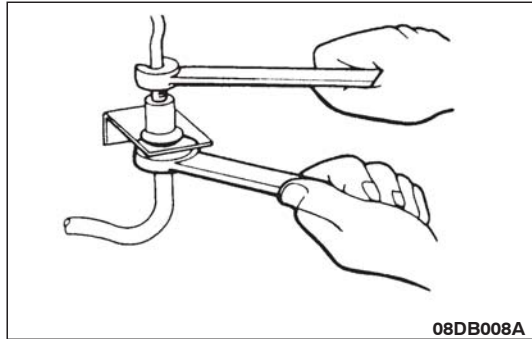
Clutch line removal steps

10. Clutch hose bracket
11. Clutch hose

08DB003A

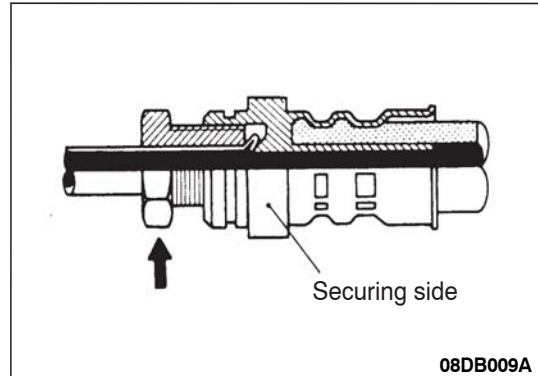
INSTALLATION SERVICE POINT

<<A>> CLUTCH HOSE INSTALLATION



Holding the nut at the clutch hose side, loosen the flare nut of the clutch pipe.

>>A<< CLUTCH HOSE/CLUTCH PIPE
INSTALLATION



1. Temporarily tighten the clutch pipe flare nut by hand, and then tighten it to the specified torque, being careful that the clutch hose does not become twisted.
2. After tightening the clutch pipe flare nut and eye bolt, check to be sure there is no clutch fluid leak

INSPECTION

M1211002000158

- Check the master cylinder or clutch hose for fluid leakage.
- Check the clutch hose or tube for cracks or clogging.
- Check the pedal shaft bushing for wear.
- Check the pedal arm for bend or torsion.

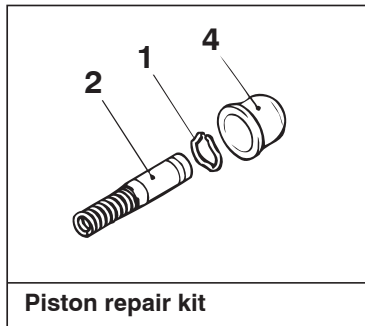
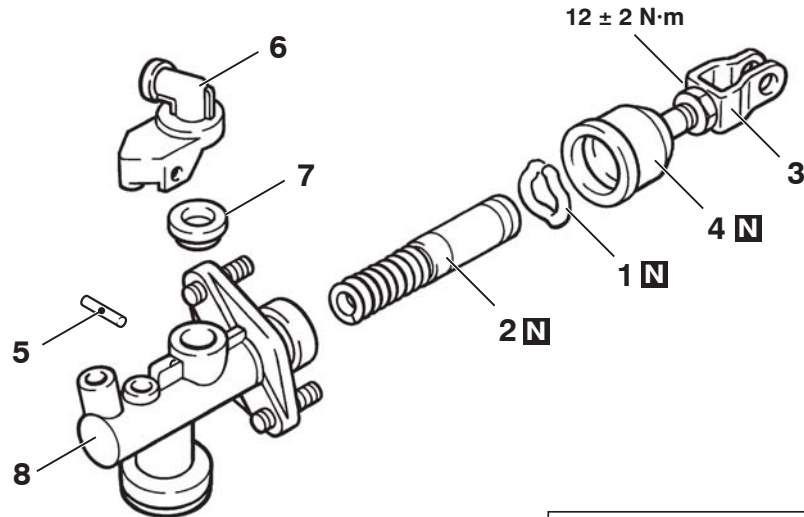
DISASSEMBLY AND REASSEMBLY

M1211002100230

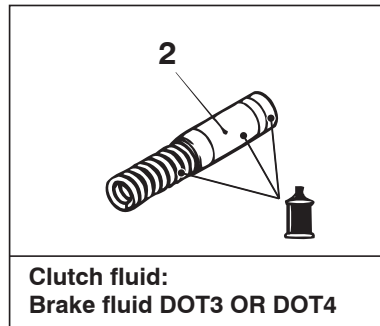
CLUTCH MASTER CYLINDER

CAUTION

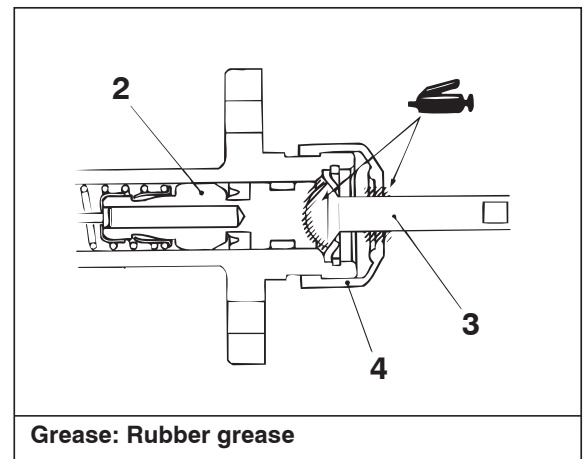
Do not disassemble the piston assembly.



Piston repair kit



Clutch fluid:
Brake fluid DOT3 OR DOT4



Grease: Rubber grease

08DB011A

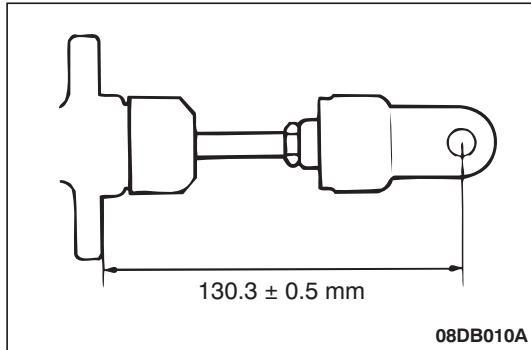
Disassembly steps

- >>A<<
1. Piston stopper ring
 2. Piston assembly
 3. Pushrod assembly
 4. Boot

Disassembly steps (Continued)

5. Spring pin
6. Nipple
7. Seal
8. Master cylinder body

REASSEMBLY SERVICE POINT
>>A<< PUSHROD ASSEMBLY
INSTALLATION



Set the length of the pushrod assembly to the dimension shown to make the adjustment of the clutch pedal easier.

INSPECTION

M1211002200152

- Check inside the cylinder body for rust and scars.
- Check the piston for rust and scars.
- Check the pipe connection for clogging.