

---

## GROUP 27

# REAR AXLE

### CONTENTS

REAR AXLE 2WD .....	27-2	DIFFERENTIAL.....	27-4
REAR AXLE 4WD .....	27-2		

REAR AXLE <2WD>

M2270002000143

- The rear axle has the following features:
- The wheel bearing is a unit ball bearing (double-row angular contact ball bearing) which incorporates the oil seals and is highly resistant to thrust loads.

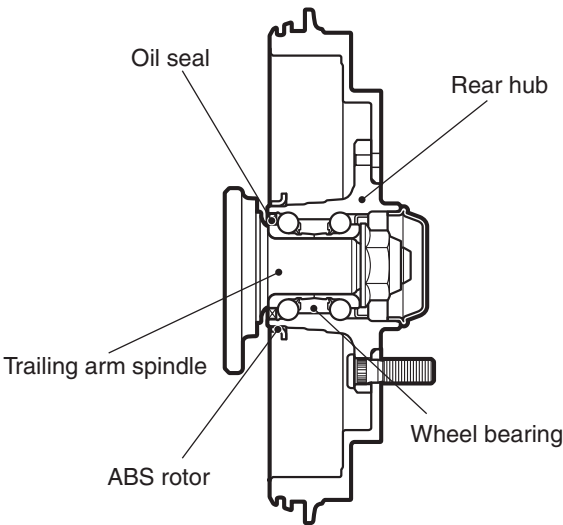
- ABS rotor for detecting the wheel speed is press-fitted to the rear hub.

SPECIFICATIONS

Item		Specification
Wheel bearing	Type	Unit ball bearing (double-row angular contact ball bearing)

NOTE: The wheel bearing is part of the hub, therefore its size is not listed here.

CONSTRUCTION DIAGRAM



AC106956 AC

REAR AXLE <4WD>

M2270003000232

- The rear axle has the following features:
- The wheel bearing is a double-row angular contact ball bearing which incorporates the oil seals and is highly resistant to a thrust load.
  - The driveshaft has BJ-TJ constant velocity joints.
  - A smaller BJ side boot is used.

- ABS rotor for detecting the wheel speed is press-fitted to the BJ outer wheel. <Vehicles with ABS>

NOTE:

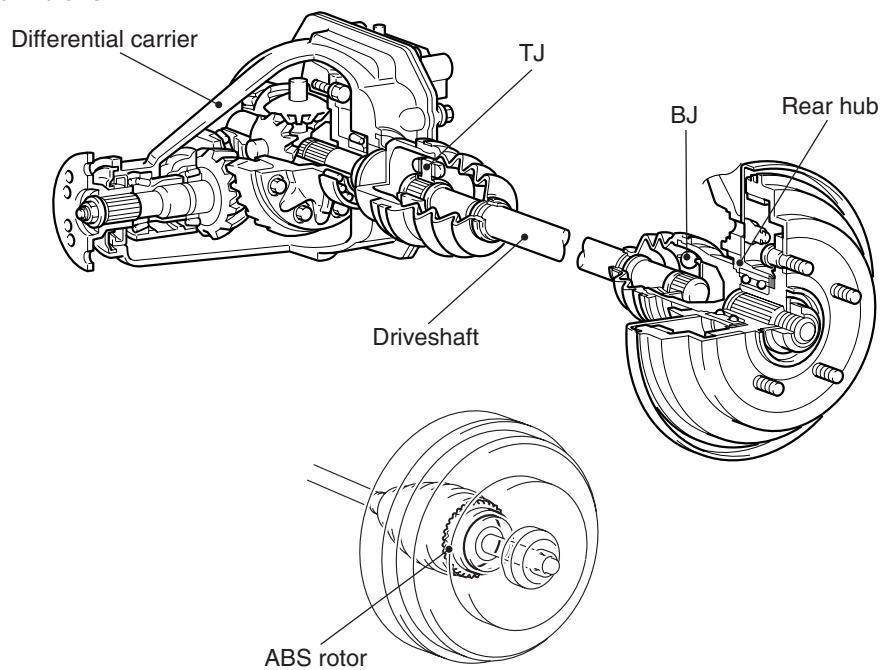
- BJ: Birfield Joint
- TJ: Tripod Joint

## SPECIFICATIONS

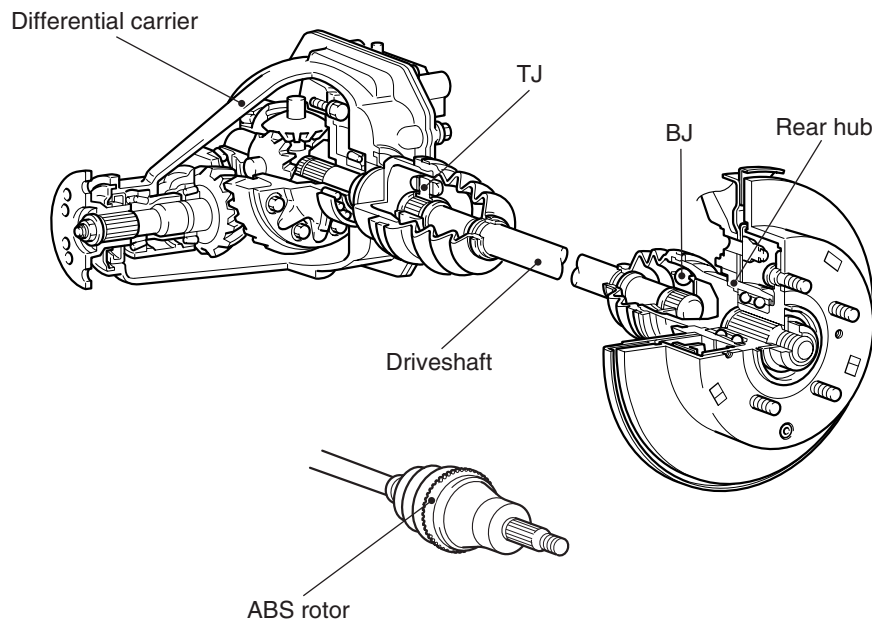
Item			Specification
Wheel bearing	Type		Double-row angular contact ball bearing
	Bearing (OD x ID) mm		70 × 40
Driveshaft	Type	Outer	BJ
		Inner	TJ
	Length (joint to joint) × outer diameter mm	LH	481 × 22
		RH	571 × 22

## CONSTRUCTION DIAGRAM

<Vehicles with drum brake>



<Vehicles with disc brake>



AC300622 AD

DIFFERENTIAL

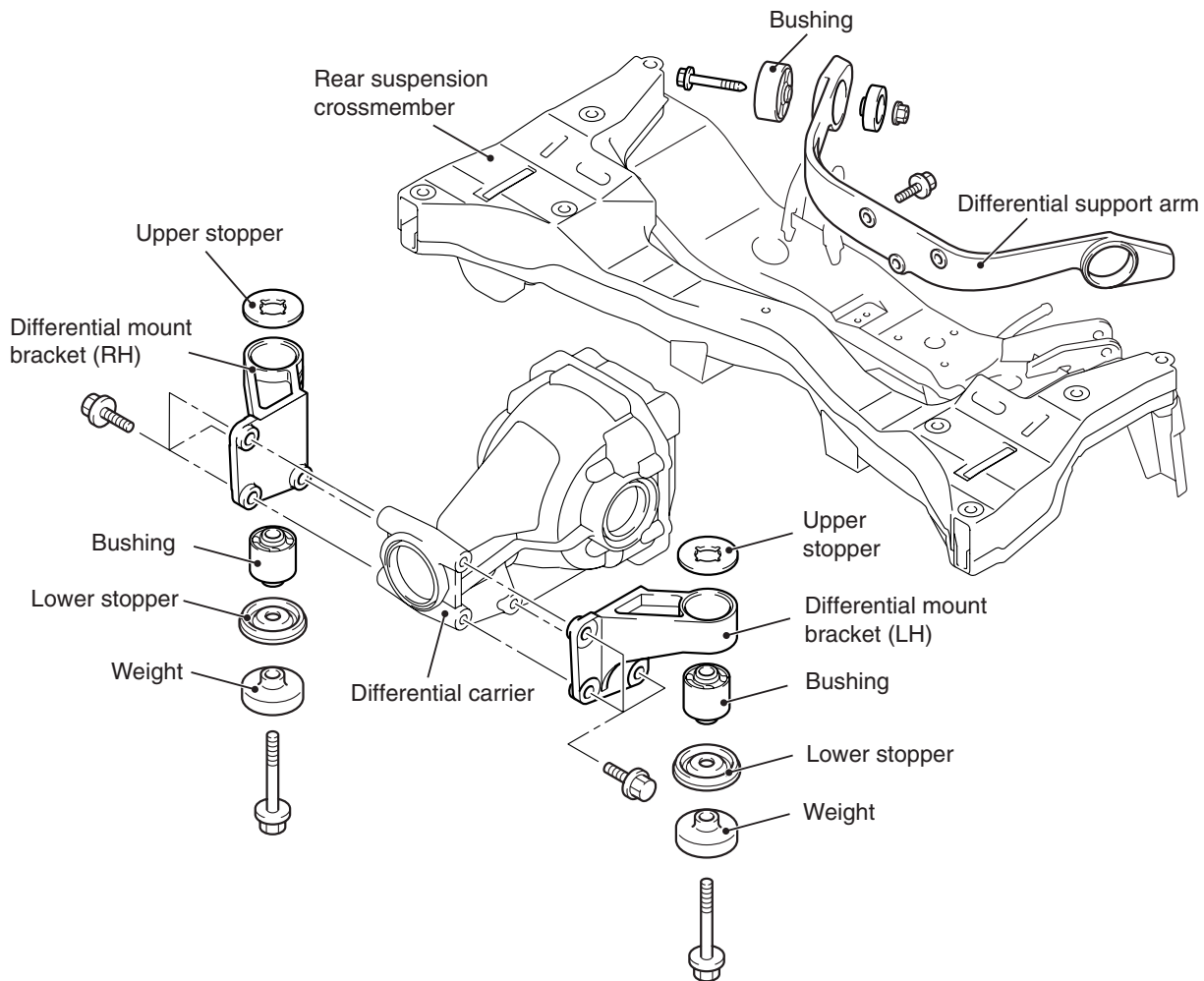
M2270001000247

The differential specifications are established as follows.

SPECIFICATIONS

Item		Specification
Reduction gear type		Hypoid gear
Reduction ratio		3.312
Differential gear type (Type × number of gears)	Side gear	Straight bevel gear × 2
	Pinion gear	Straight bevel gear × 2
Number of teeth	Drive gear	53
	Drive pinion	16
	Side gear	14
	Pinion gear	10
Bearing (Outside diameter × inside diameter) mm	Side	72 × 35
	Front	62 × 25
	Rear	72 × 35
Differential gear oil	Type	Hypoid gear oil API classification GL-5 or higher Above 10° C: SAE 90 Below 10° C: SAE 80W
	Amount L	0.55

## DIFFERENTIAL MOUNT



AC312745 AD

- The differential carrier is supported by the differential mount bracket on the front side, and is secured to the rear suspension crossmember with a bushing. It is supported by the differential support arm at the rear, and is secured to the rear suspension crossmember with a bushing.
- The differential support arm bushings to absorb vibration from the suspension.
- The weight is used to reduce differential gear noise.

---

## NOTES