

GROUP 52A

INTERIOR

CONTENTS

SERVICE SPECIFICATIONS	52A-2	TAILGATE TRIM	52A-25
SPECIAL TOOL	52A-2	TAILGATE TRIM	52A-25
INSTRUMENT PANEL ASSEMBLY*	52A-3	HEADLINING	52A-27
REMOVAL AND INSTALLATION <L.H. DRIVE VEHICLES>.....	52A-3	REMOVAL AND INSTALLATION	52A-27
DISASSEMBLY AND REASSEMBLY.....	52A-8	INSIDE REAR VIEW MIRROR	52A-28
REMOVAL AND INSTALLATION <R.H. DRIVE VEHICLES>	52A-9	FRONT SEAT ASSEMBLY*	52A-29
DISASSEMBLY AND REASSEMBLY.....	52A-14	REMOVAL AND INSTALLATION	52A-29
FLOOR CONSOLE ASSEMBLY	52A-15	INSPECTION.....	52A-31
REMOVAL AND INSTALLATION	52A-15	DISASSEMBLY AND REASSEMBLY	52A-33
DISASSEMBLY AND REASSEMBLY.....	52A-17	REAR SEAT ASSEMBLY	52A-36
TRIMS	52A-19	REMOVAL AND INSTALLATION	52A-36
REMOVAL AND INSTALLATION	52A-19	DISASSEMBLY AND REASSEMBLY	52A-38
DOOR TRIM	52A-21	FRONT SEAT BELT	52A-42
REMOVAL AND INSTALLATION	52A-21	REMOVAL AND INSTALLATION	52A-42
DISASSEMBLY AND REASSEMBLY.....	52A-24	INSPECTION.....	52A-43
		REAR SEAT BELT	52A-43
		REMOVAL AND INSTALLATION	52A-43

WARNINGS REGARDING SERVICING OF SUPPLEMENTAL RESTRAINT SYSTEM (SRS) EQUIPPED VEHICLES

WARNING

- *Improper service or maintenance of any component of the SRS, or any SRS-related component, can lead to personal injury or death to service personnel (from inadvertent firing of the air bag) or to the driver and passenger (from rendering the SRS inoperative).*
- *Service or maintenance of any SRS component or SRS-related component must be performed only at an authorized MITSUBISHI dealer.*
- *MITSUBISHI dealer personnel must thoroughly review this manual, and especially its GROUP 52B - Supplemental Restraint System (SRS) before beginning any service or maintenance of any component of the SRS or any SRS-related component.*

NOTE

The SRS includes the following components: SRS air bag control unit, SRS warning light, front impact sensors, air bag module, clock spring, and interconnecting wiring. Other SRS-related components (that may have to be removed/installed in connection with SRS service or maintenance) are indicated in the table of contents by an asterisk (*).

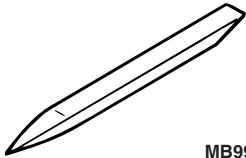
SERVICE SPECIFICATIONS

M1521000300069

Item	Measured terminals	Standard value
Seat cushion heater (At room temperature 20°C)	2 – 3	Approximately $4.8\Omega \pm 10\%$
	1 – 3	Approximately $5.2\Omega \pm 10\%$
Seatback heater (At room temperature 20°C)	1 – 2	Approximately $4.8\Omega \pm 10\%$

SPECIAL TOOL

M1521000600253

TOOL	Tool number	Name	Use
 MB990784	MB990784	Ornament remover	Removal of switch, trim, etc.

INSTRUMENT PANEL ASSEMBLY

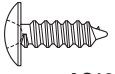
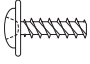
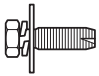

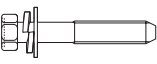
REMOVAL AND INSTALLATION <L.H. DRIVE VEHICLES>

M1521001700952

⚠ WARNING

For removal and installation of the passenger's (front) air bag module, always observe the service procedures described in GROUP 52B, Air Bag Module and Clock Spring P.52B-87.

The following bolts and screws are used for installing the instrument panel. Bolts and screws are indicated as marks shown in the illustration in the sections of "Removal and Installation" and "Disassembly and Reassembly."

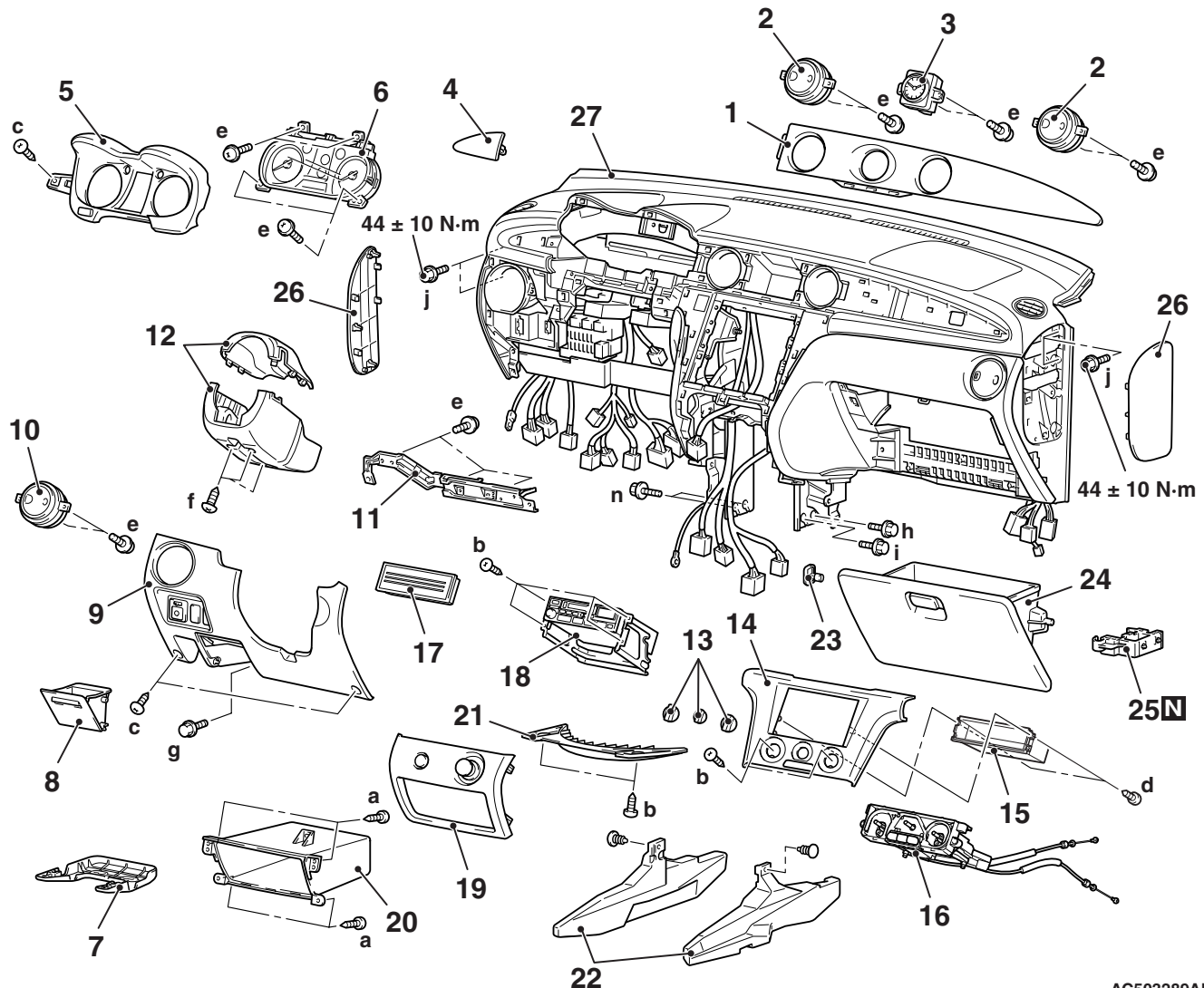
Name	Symbol	Size (D × L) mm	Colour	Shape
Tapping screw	a	5 × 12	-	 AC104450
	b	5 × 16	-	
	c	5 × 16	Black	
	d	4 × 10	-	 AC104436
	e	5 × 12	-	
	f	5 × 20	-	
Washer assembly bolt	g	6 × 16	-	 AC104417
	h	6 × 16	-	 AC104416
	i	6 × 16 (Earth)	-	
	j	10 × 60	-	 AC200304

CAUTION

- Refer to GROUP 52B, SRS Service Precautions [P.52B-4](#) and Air bag Module and Clock Spring [P.52B-87](#) before removing the passenger's (front) air bag module.
- Do not subject the SRS-ECU to any shocks when removing or installing the instrument panel.

Pre-removal and Post-installation Operation

- Removal and Installation of Front Floor Console (Refer to [P.52A-15](#)).
- Removal and Installation of Steering Wheel (Refer to GROUP 37, Steering Wheel [P.37-15](#)) and Air Bag Module Assembly (Refer to GROUP 52B, Air bag module and clock spring [P.52B-87](#)).



AC503289AB

Removal steps

<<A>>

1. Instrument panel clock garnish
2. Instrument panel air outlet (centre)
3. Clock
4. Instrument panel driver's side garnish
5. Meter bezel
6. Combination meter
7. Junction block cover <Vehicles for Argentina>

<<A>>

Removal steps (Continued)

- Hood lock release handle (Refer to GROUP 42, Hood [P.42-4](#)).
- 8. Instrument panel parcel box
- Floor harness (RH) and junction block connection
- 9. Instrument lower panel
- 10. Instrument panel air outlet (LH)
- 11. Instrument panel lower panel bracket
- 12. Column cover

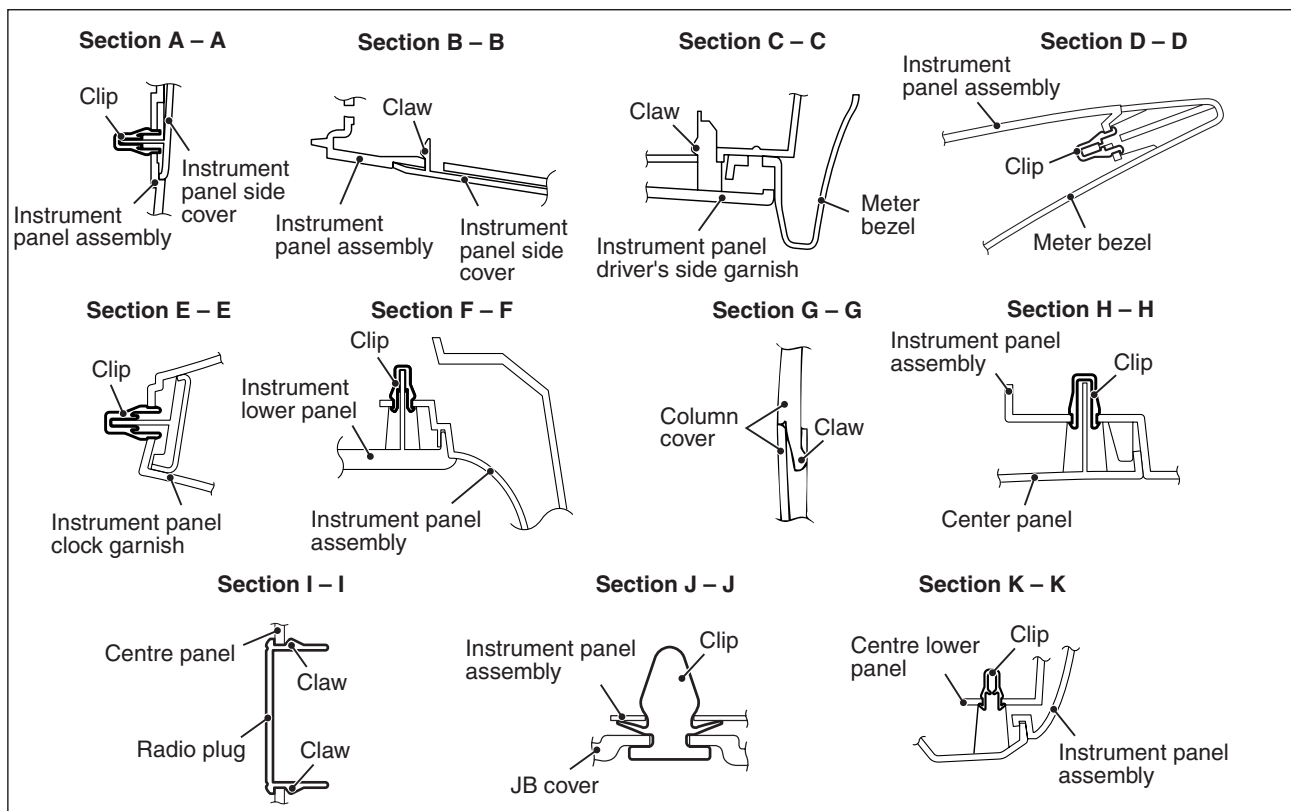
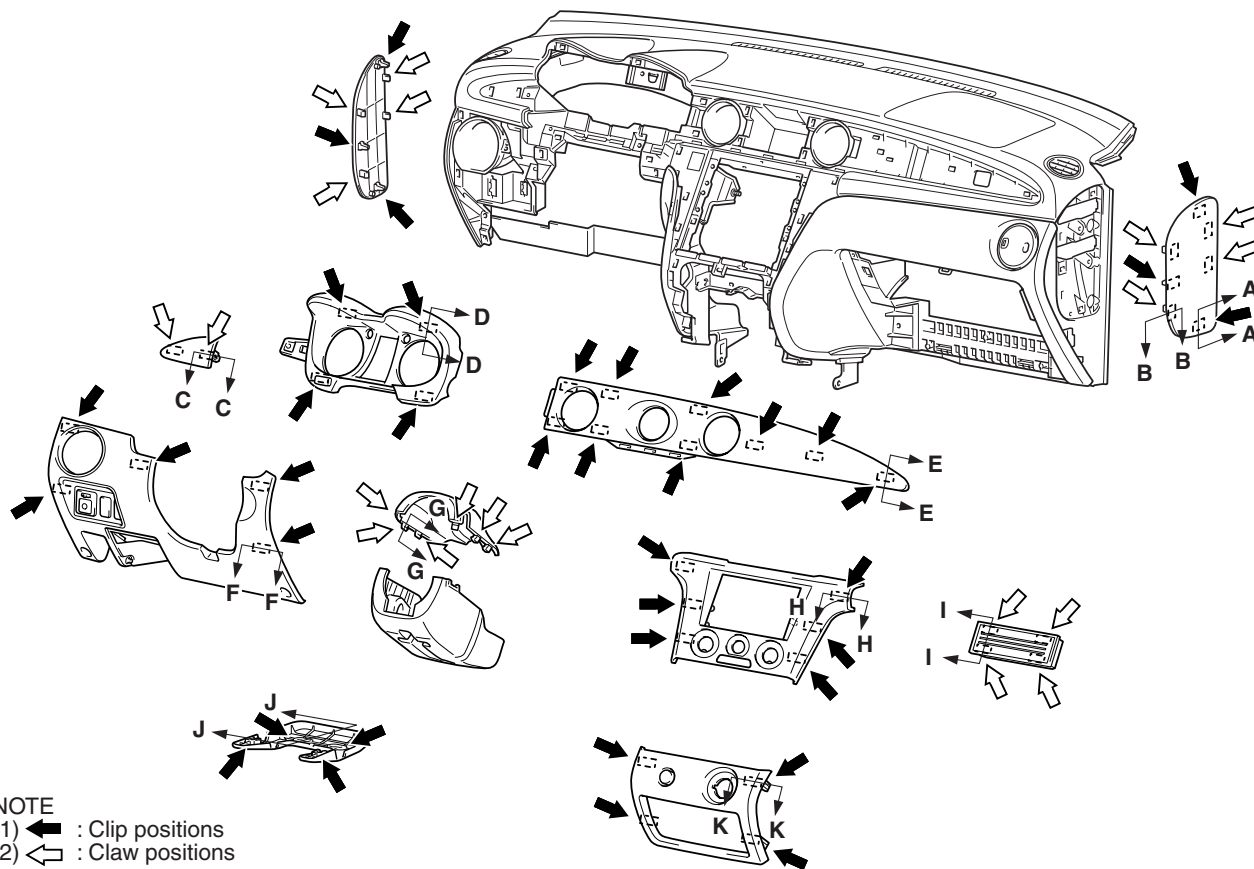
Removal steps (Continued)

- Air mix door cable, blow vent changeover damper cable connection (Refer to GROUP 55A, Heater Control Assembly and A/C Switch [P.55A-30](#)).
- >>A<<
13. Knob
 14. Centre panel
 15. Box
 16. Manual air conditioner control panel
 17. Radio plug <Vehicles for General Export>
 18. Radio with tape player <Vehicles for GCC >
 19. Centre lower panel
 20. Centre lower box
 21. Centre lower cover
 - Front scuff plate, cowl side trim (Refer to [P.52A-19](#)).
 22. Back bone spacer

Removal steps (Continued)

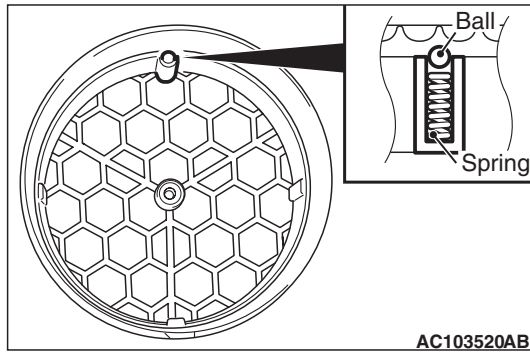
23. Glove box stopper
24. Glove box
25. Connector block
26. Instrument panel side cover
 - Roof harness connection
 - Instrument panel harness earth connection
 - Instrument panel and body harness connection
 - Steering shaft harness connector and clamp
 - Stop lamp switch connector
 - SRS-ECU connector
 - Shift lock cable clamp
 - Steering shaft installation bolt (Refer to GROUP 37, Steering Column Shaft [P.37-17](#)).
27. Instrument panel assembly

CLIP AND CLAW POSITIONS



REMOVAL SERVICE POINT

<<A>> INSTRUMENT PANEL AIR OUTLET REMOVAL



The instrument panel air outlet may remain on the instrument panel side when disassembling the lower panel of the instrument panel and the instrument panel garnish. Carefully disassemble the parts remaining on the instrument panel side to prevent the ball and spring from falling. Assemble the ball and spring according to the figure to the left if they fall off.

INSTALLATION SERVICE POINT

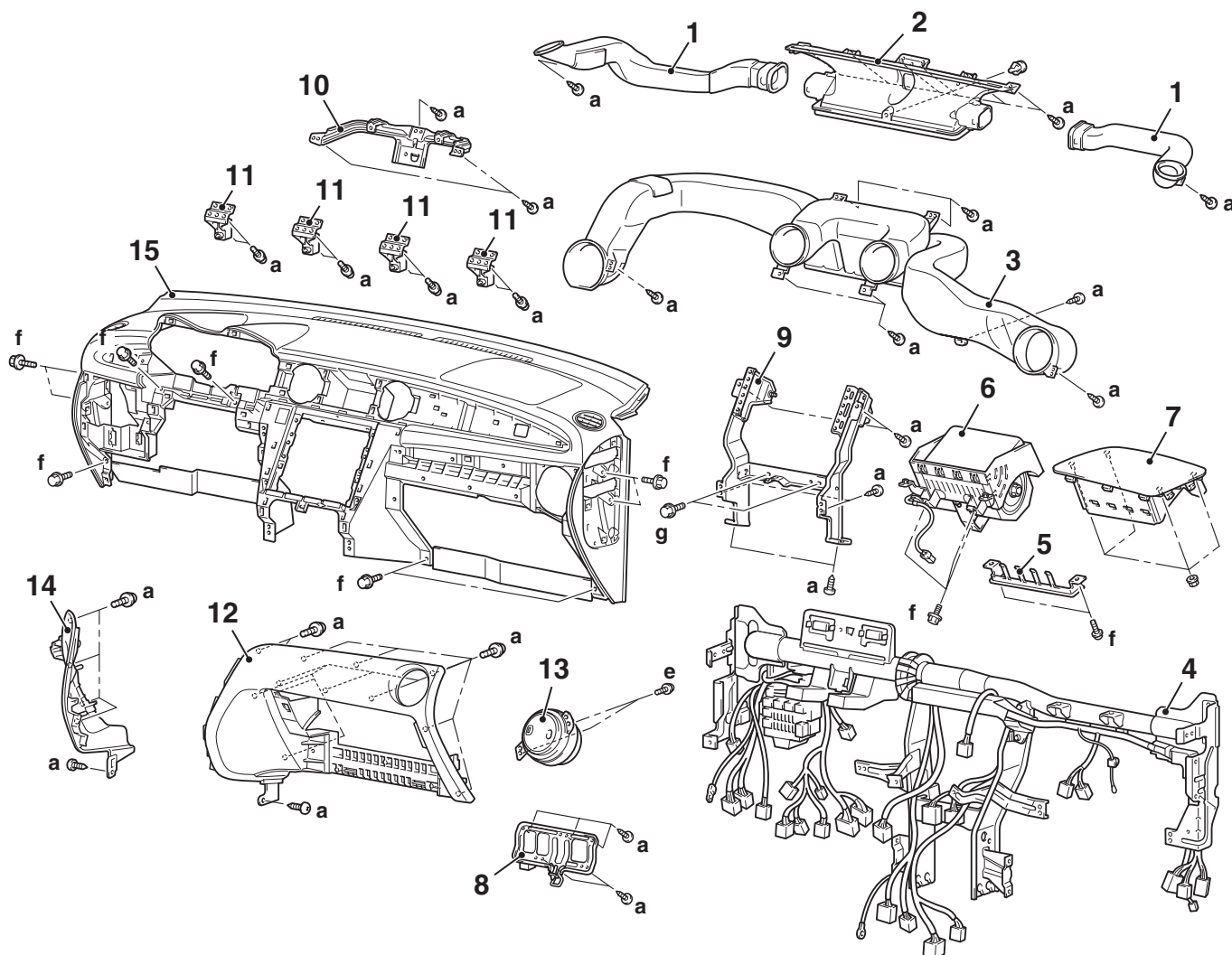
>>A<< CENTRE PANEL ASSEMBLY INSTALLATION

Air mix door cable and blow vent changeover damper cable connection (Refer to GROUP 55A, Heater Control Assembly and A/C Switch [P.55A-30](#)).

DISASSEMBLY AND REASSEMBLY

M1521001900406

<L.H. DRIVE VEHICLES>



AC212544AB

Disassembly steps

1. Side defroster duct
2. Defroster nozzle assembly
3. Distribution duct
4. Front deck crossmember
5. Passenger's (front) air bag module bracket
6. Passenger's (front) air bag module
7. Passenger's (front) air bag module cover
8. Glove box striker

Disassembly steps (Continued)

9. Instrument panel reinforcement
10. Meter bracket
11. Instrument panel holder
12. Instrument panel under cover passenger's side
13. Side air outlet assembly (RH)
14. Centre cover driver's side
 - Instrument panel harness connector clamp
15. Instrument panel


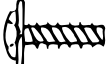

REMOVAL AND INSTALLATION <R.H. DRIVE VEHICLES>

M1521001700963

WARNING

For removal and installation of the passenger's (front) air bag module, always observe the service procedures described in GROUP 52B, Air Bag Module and Clock Spring P.52B-87.

The following bolts and screws are used for installing the instrument panel. Bolts and screws are indicated as marks shown in the illustration in the sections of "Removal and Installation" and "Disassembly and Reassembly."

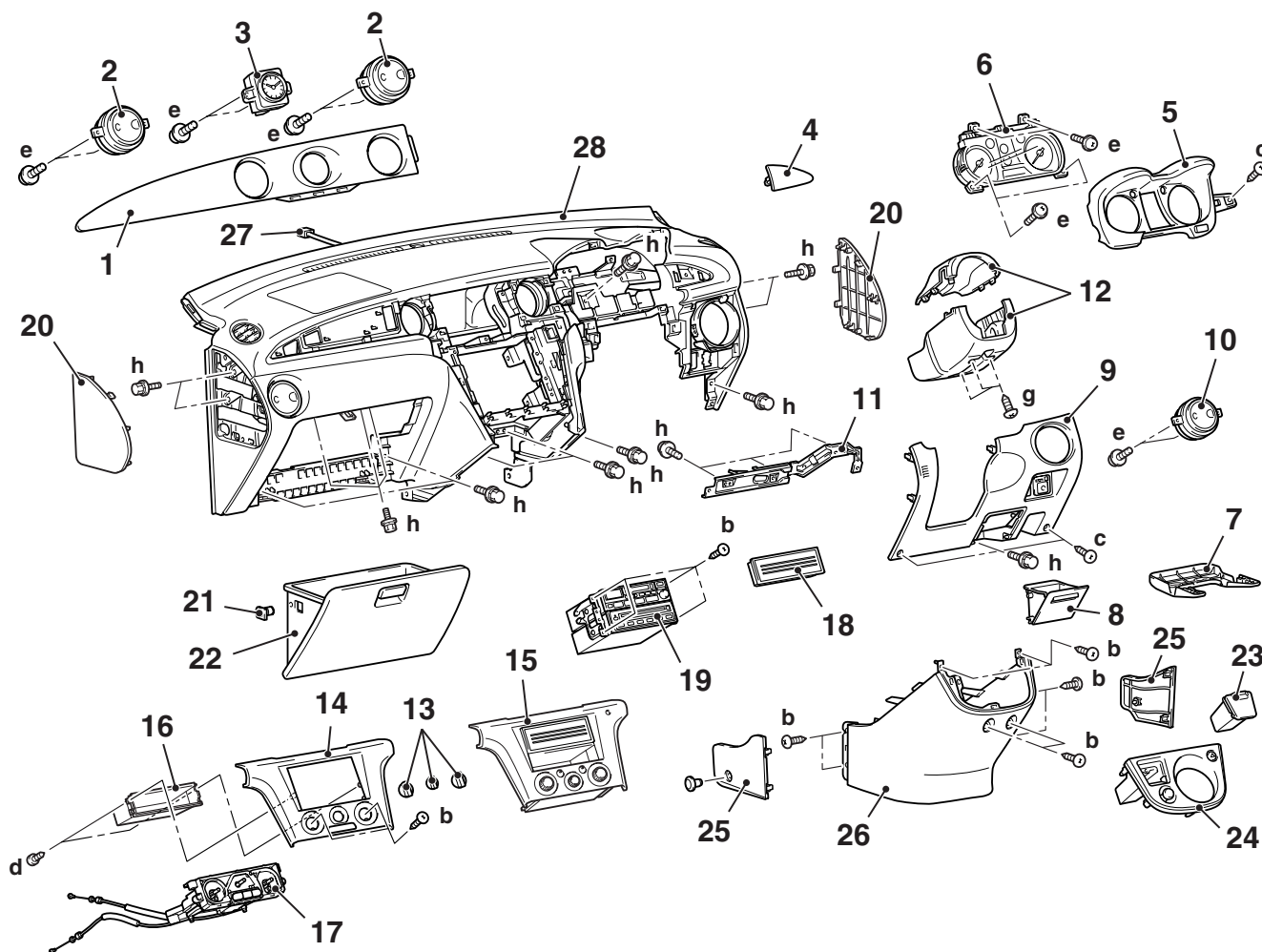
Name	Symbol	Size (D × L) mm	Colour	Shape
Tapping screw	a	5 × 12	—	 ACX01282
	b	5 × 16	—	
	c	5 × 16	Black	
	d	4 × 10	—	 ACX01283
	e	5 × 12	—	
	f	5 × 16	Black	
	g	5 × 20	—	
Washer assembly bolt	h	6 × 16	—	 ACX02229

CAUTION

- Refer to GROUP 52B, SRS Service Precautions [P.52B-4](#) and Air bag Module and Clock Spring [P.52B-87](#) before removing the passenger's (front) air bag module.
- Do not subject the SRS-ECU to any shocks when removing or installing the instrument panel.

Pre-removal and Post-installation Operation

- Removal and Installation of Steering Wheel (Refer to GROUP37, Steering Wheel [P.37-15](#)) and Air Bag Module Assembly (Refer to GROUP 52B, Air Bag Module and Clock Spring [P.52B-87](#)).



AC212540 AB

Removal steps

<<A>>

1. Instrument panel garnish
2. Instrument panel air outlet (centre) <<A>>
3. Clock
4. Instrument panel driver's side garnish
5. Meter bezel
6. Combination meter
7. Junction block cover <Vehicles for South Africa>
 - Hood lock release handle (Refer to GROUP 42, Hood [P.42-4](#)).
8. Instrument panel parcel box
 - Floor harness (RH) and junction block connection

Removal steps (Continued)

>>A<<

9. Instrument lower panel
10. Instrument panel air outlet (RH)
11. Instrument panel lower panel bracket
12. Column cover
 - Air mix door cable, blow vent changeover damper cable connection <Vehicles with manual air conditioner> (Refer to GROUP 55A, Heater Control Assembly and A/C Switch [P.55A-30](#)).
13. Knob <Vehicles with manual air conditioner>
14. Centre panel

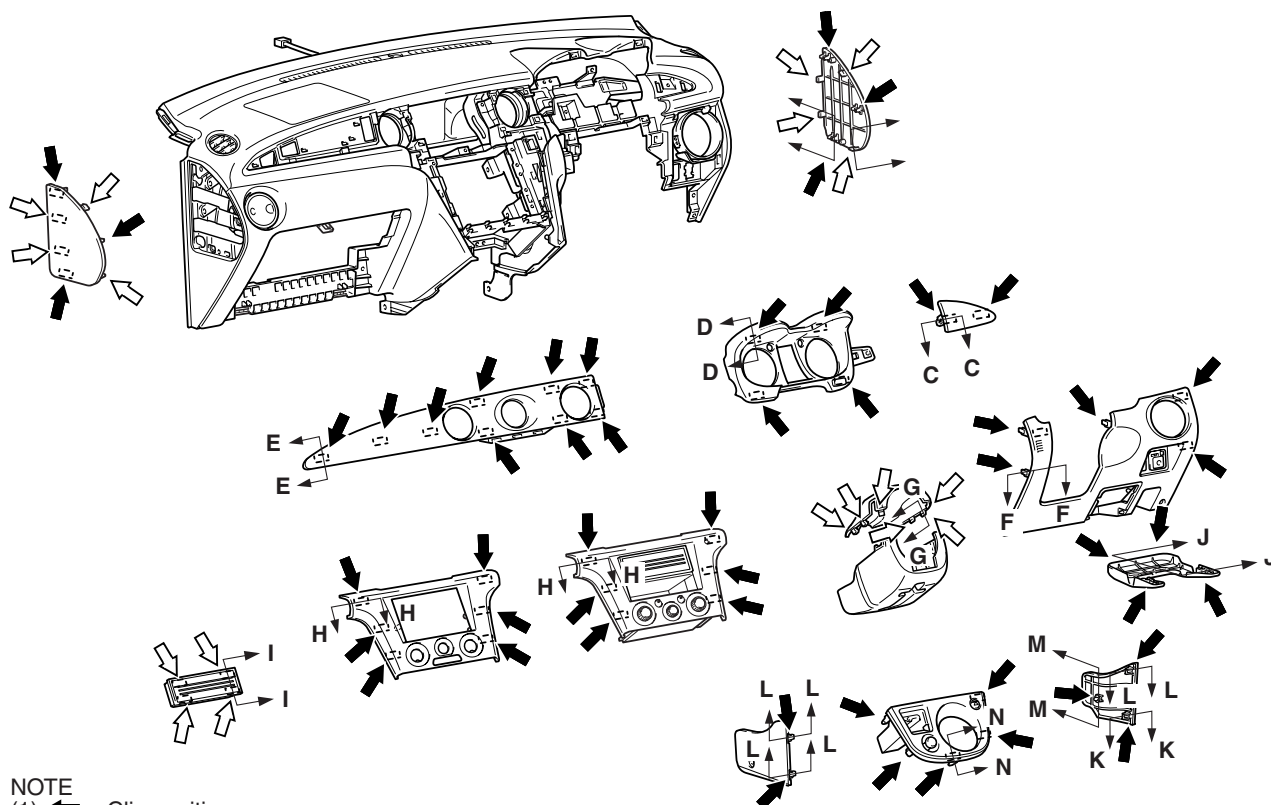
Removal steps (Continued)

15. Centre panel assembly <Vehicles for South Africa>
 - Automatic air conditioner control panel (A/C-ECU) <Vehicles with auto air conditioner> (Refer to GROUP 55B, Automatic Air Conditioner Panel Assembly (A/C-ECU) [P.55B-28](#)).
16. Box <LS>
17. Manual air conditioner control panel <Vehicles with manual air conditioner>
18. Radio plug <Vehicles for South Africa>
19. Radio with CD player and CD changer assembly <XLS, VR-X>
20. Instrument panel side cover
21. Glove box stopper
22. Glove box
 - Air bag connector (front passenger's)
23. Instrument panel ashtray <R.H.drive vehicles (except for South Africa)>

Removal steps (Continued)

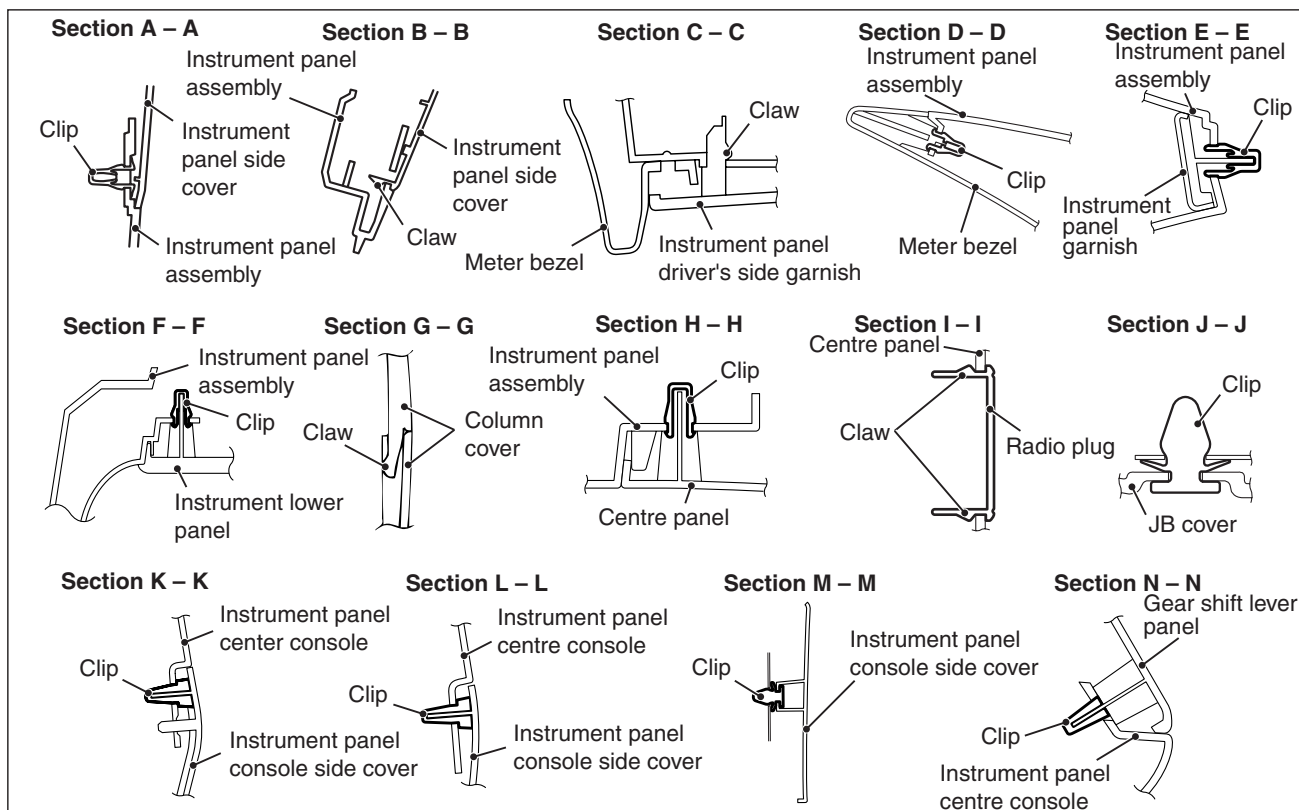
24. Gear shift lever panel
25. Instrument panel console side cover
26. Instrument panel centre console
 - Interior temperature sensor (Refer to GROUP 55B, Room Temperature Sensor and Heater Water Temperature Sensor [P.55B-33](#)).
27. Photo sensor connector <Vehicles with auto air conditioner>
 - Remote controlled mirror switch harness connector clamp
 - Fog lamp switch harness connector clamp
 - Combination meter harness connector clamp
 - Steering shaft harness connector and clamp
 - Steering shaft installation bolt (Refer to GROUP 37, Steering Column Shaft [P.37-17](#)).
28. Instrument panel assembly

CLIP AND CLAW POSITIONS



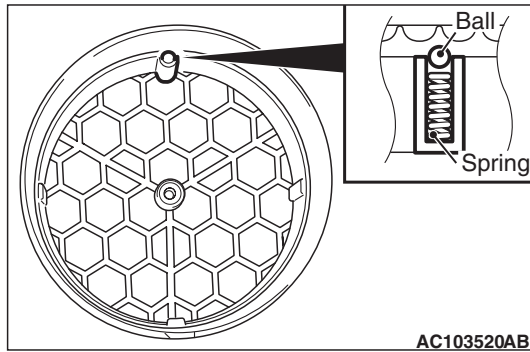
NOTE

- (1) : Clip positions
 (2) : Claw positions



REMOVAL SERVICE POINT

<<A>> INSTRUMENT PANEL AIR OUTLET REMOVAL



The instrument panel air outlet may remain on the instrument panel side when disassembling the lower panel of the instrument panel and the instrument panel garnish. Carefully disassemble the parts remaining on the instrument panel side to prevent the ball and spring from falling. Assemble the ball and spring according to the figure to the left if they fall off.

INSTALLATION SERVICE POINT

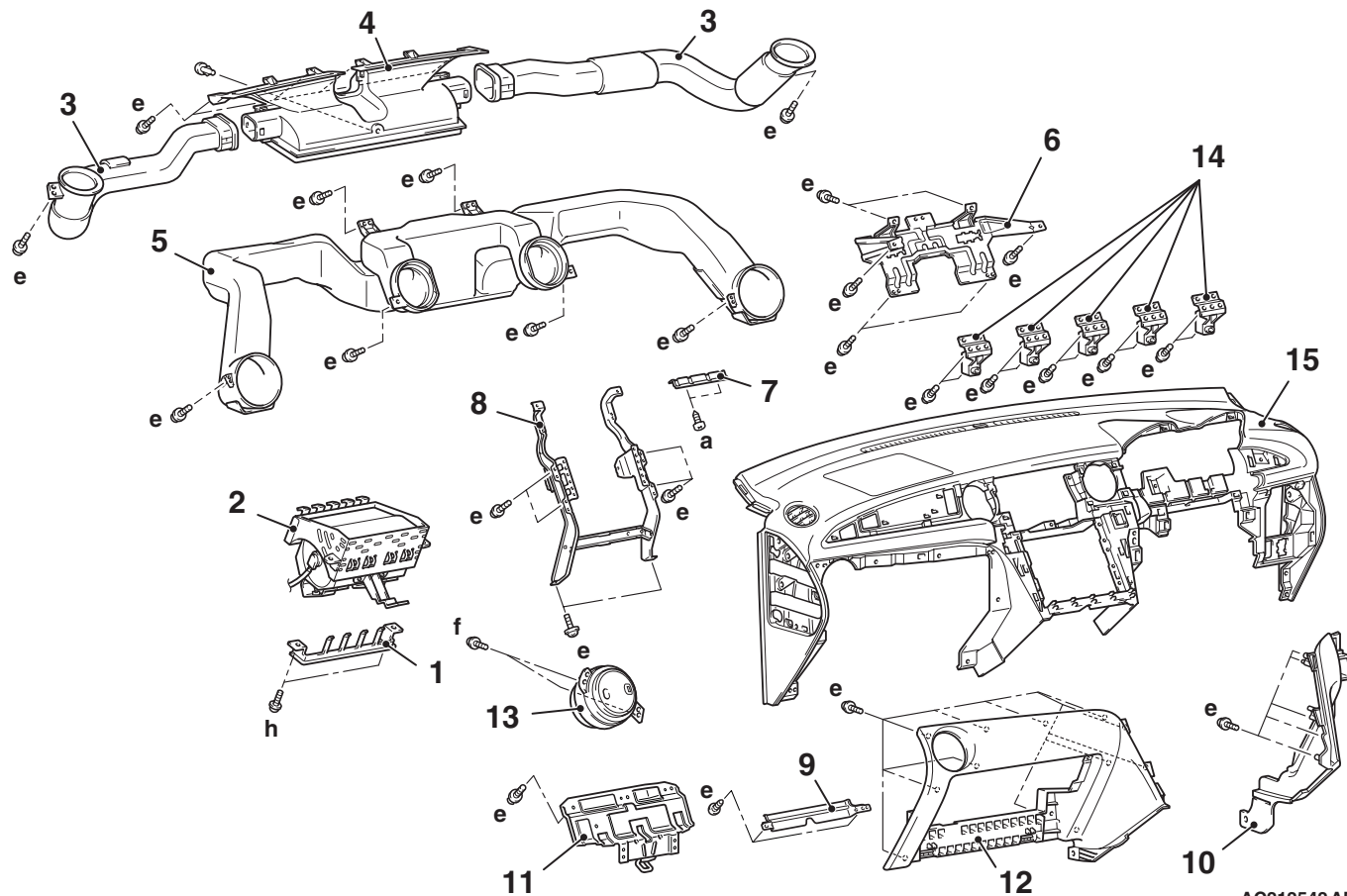
>>A<< CENTRE PANEL ASSEMBLY INSTALLATION

Air mix door cable and blow vent changeover damper cable connection (Refer to GROUP 55A, Heater Control Assembly and A/C Switch [P.55A-30](#)).

DISASSEMBLY AND REASSEMBLY

M1521001900644

<R.H. DRIVE VEHICLES>



AC212542 AB

Disassembly steps

1. Passenger's (front) air bag module bracket
2. Passenger's (front) air bag module
3. Side defroster duct
4. Defroster nozzle assembly
5. Distribution duct
6. Meter bracket
7. Instrument panel garnish bracket
8. Instrument panel reinforcement
9. Centre panel bracket <Vehicles for South Africa>
10. Centre cover driver's side

Disassembly steps (Continued)

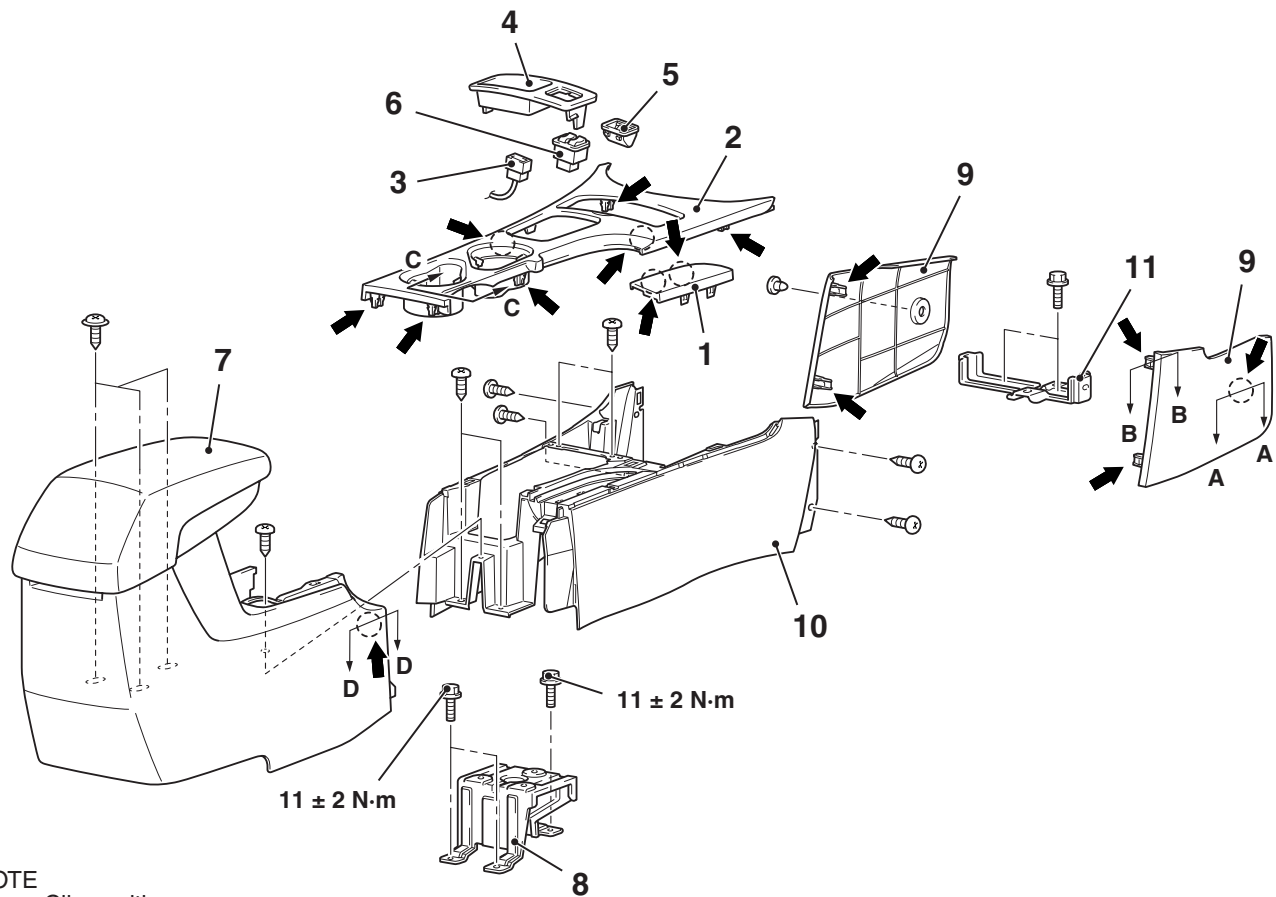
11. Glove box striker
12. Instrument panel undercover passenger's side
13. Side air outlet assembly (LH)
14. Instrument panel holder
15. Instrument panel
 - Photo sensor (Refer to GROUP 55B, Room Temperature Sensor and Heater Water Temperature Sensor [P.55B-33](#)).

FLOOR CONSOLE ASSEMBLY

REMOVAL AND INSTALLATION

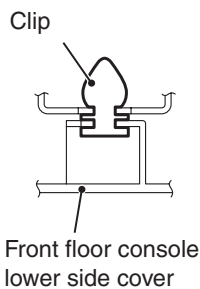
M1521002200336

<L.H. DRIVE VEHICLES>

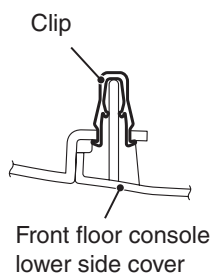


NOTE
 : Clip positions

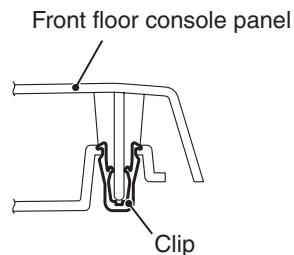
Section A – A



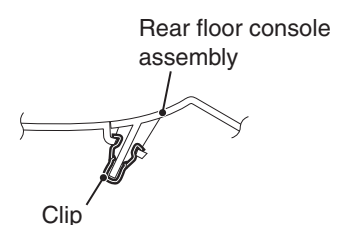
Section B – B



Section C – C



Section D – D



AC504251AB

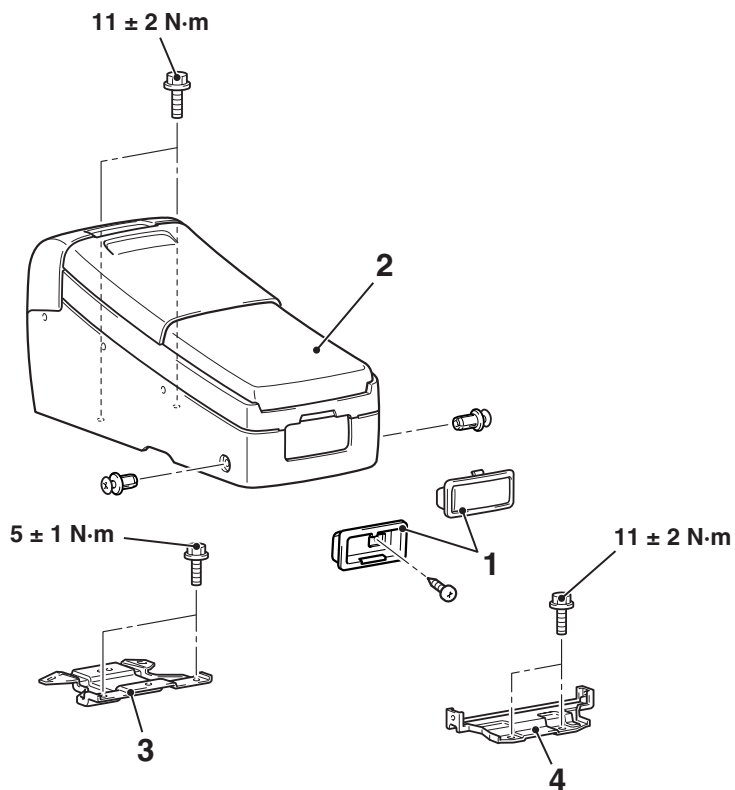
Removal steps

1. Floor console panel cover
2. Front floor console panel
3. Harness connector <Vehicles with heated seat>
4. Ashtray
5. Coin holder <Vehicles without heated seat>

Removal steps (Continued)

6. Heated seat switch <Vehicles with heated seat>
7. Rear floor console assembly
8. Rear floor console bracket
9. Front floor console lower side cover
10. Front floor console
11. Front floor console bracket

<R.H. DRIVE VEHICLES>



AC212288AB

Removal steps

1. Floor console ashtray
2. Floor console assembly

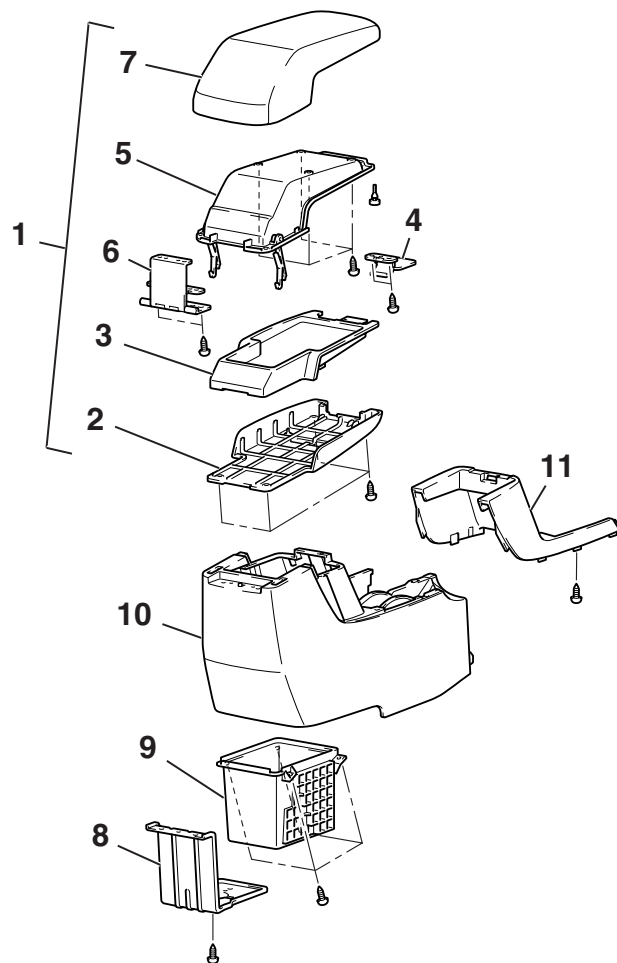
Removal steps (Continued)

3. Floor console centre bracket
4. Floor console rear bracket

DISASSEMBLY AND REASSEMBLY

M1521002400147

<L.H. DRIVE VEHICLES>



Disassembly steps

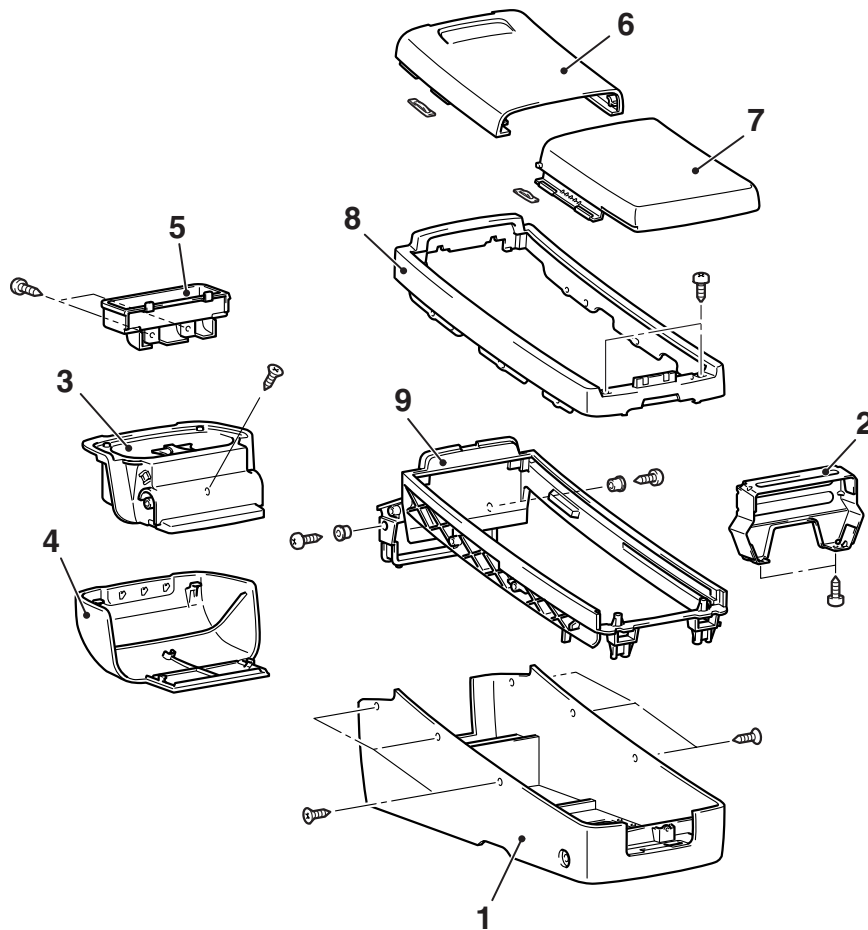
1. Lid assembly
2. Tray outer
3. Tray inner
4. Lock knob
5. Lid inner
6. Hinge assembly

Disassembly steps (Continued)

7. Lid cover
8. Hinge support bracket
9. Rear console box
10. Rear console
11. Rear console panel

AC106397AH

<R.H. DRIVE VEHICLES>



AC212290 AB

Disassembly steps

1. Lower floor console
2. Console bracket
3. Floor console holder
4. Floor console cover
5. Floor console box

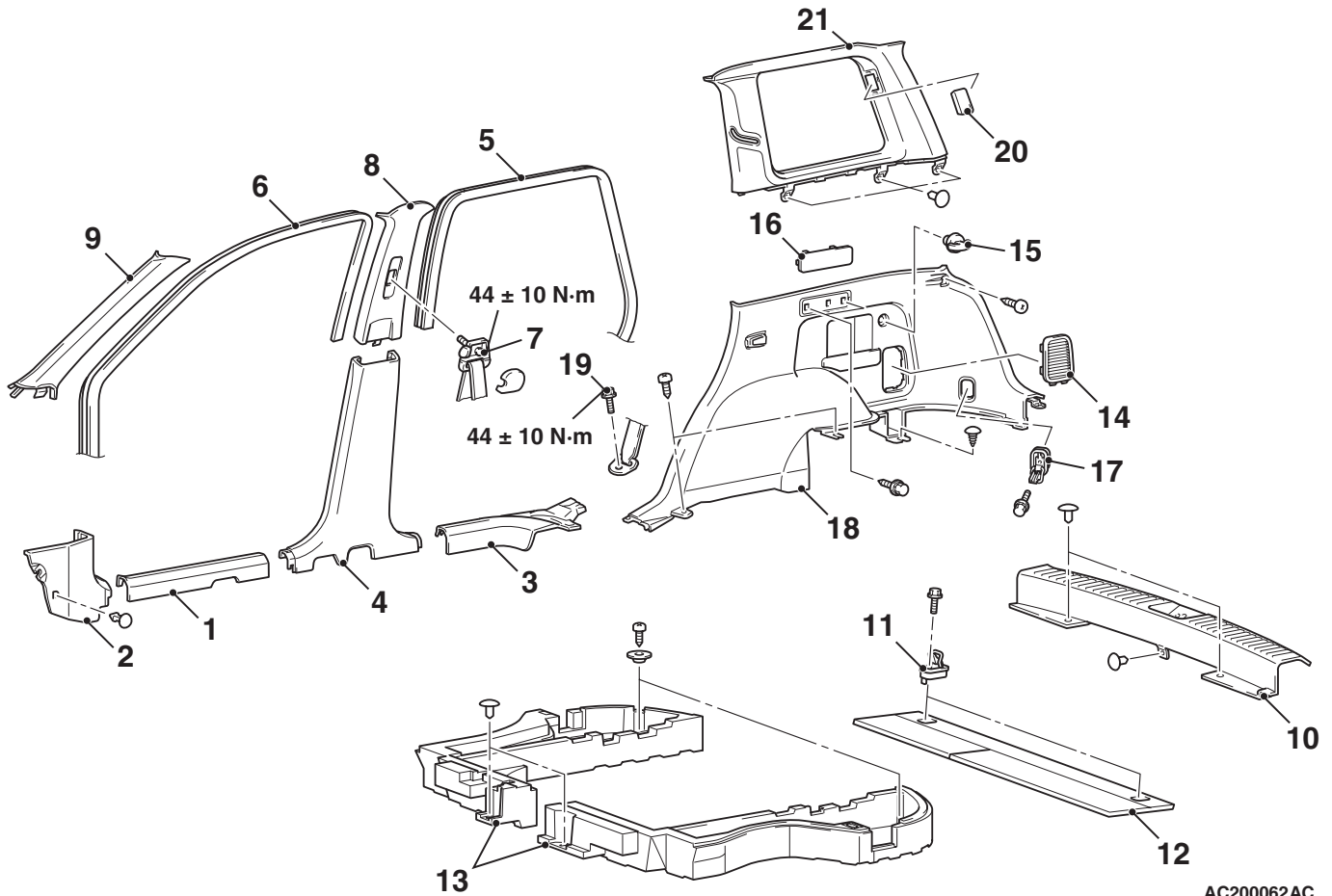
Disassembly steps (Continued)

6. Console front lid
7. Console rear lid
8. Floor console upper
9. Console centre

TRIMS

REMOVAL AND INSTALLATION

M1521001100369

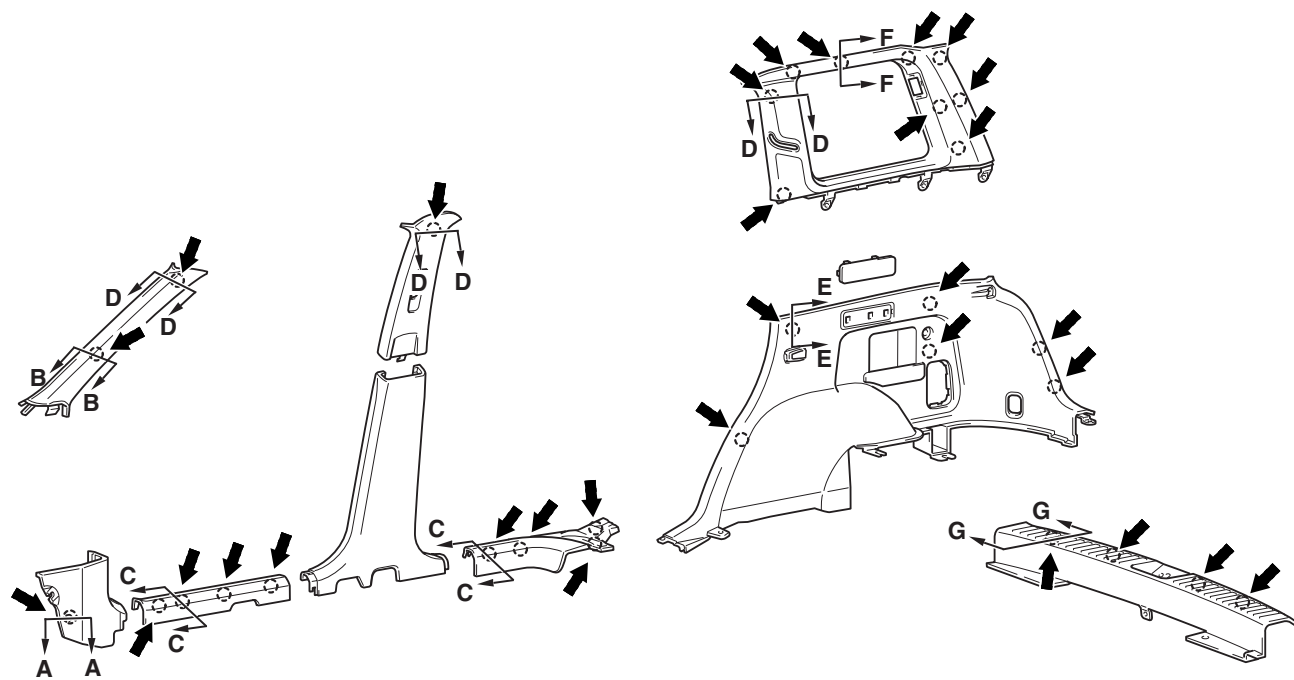


AC200062AC

- | | |
|---|--|
| 1. Front scuff plate | 13. Luggage floor box |
| 2. Cowl side trim | 14. Ventilation cap |
| • Rear seat cushion (Refer to P.52A-36). | 15. Convenience hook |
| 3. Rear scuff plate | 16. Quarter trim cap <Vehicle without tonneau cover> |
| 4. Centre pillar trim lower | 17. Parcel strap hook A |
| 5. Rear door opening trim | 18. Quarter trim lower |
| 6. Front door opening trim | 19. Rear seat belt lower anchor bolt |
| 7. Front seat belt shoulder anchor bolt | 20. Quarter trim upper cap |
| 8. Centre pillar trim upper | 21. Quarter trim upper |
| 9. Front pillar trim | |
| 10. Rear end trim | |
| 11. Parcel strap hook B | |
| 12. Rear seat board | |

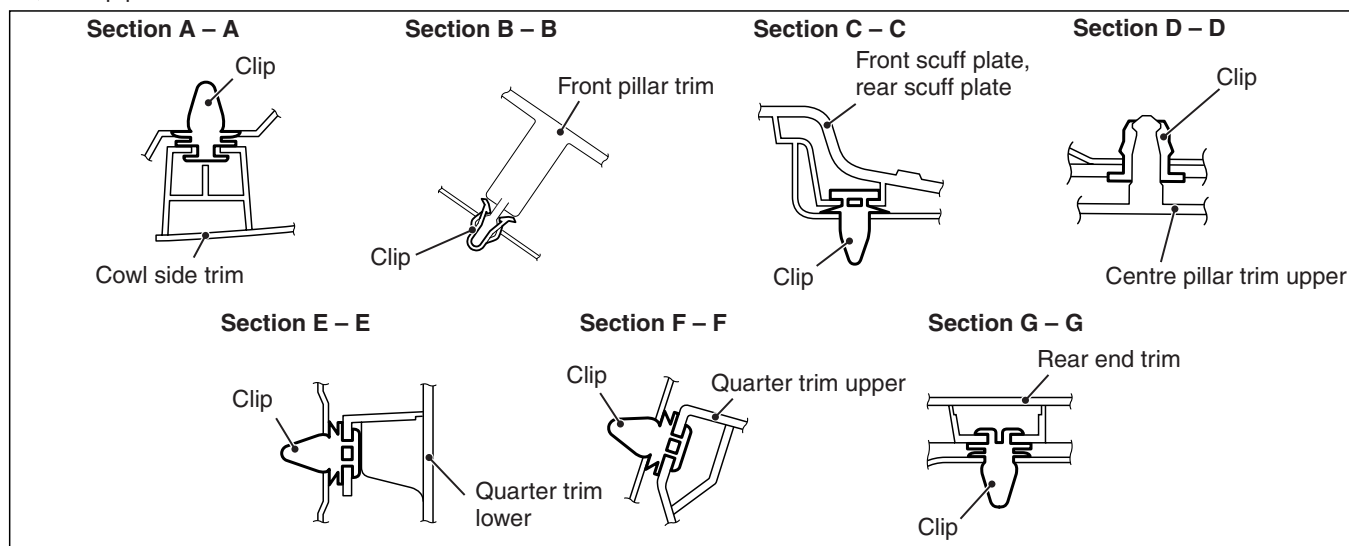
<<A>>

CLIP AND CLAW POSITION



NOTE

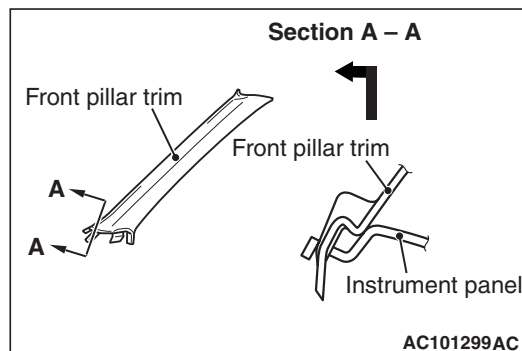
: Clip positions



AC504252 AB

REMOVAL SERVICE POINT

<<A>> FRONT PILLAR TRIM REMOVAL



AC101299AC

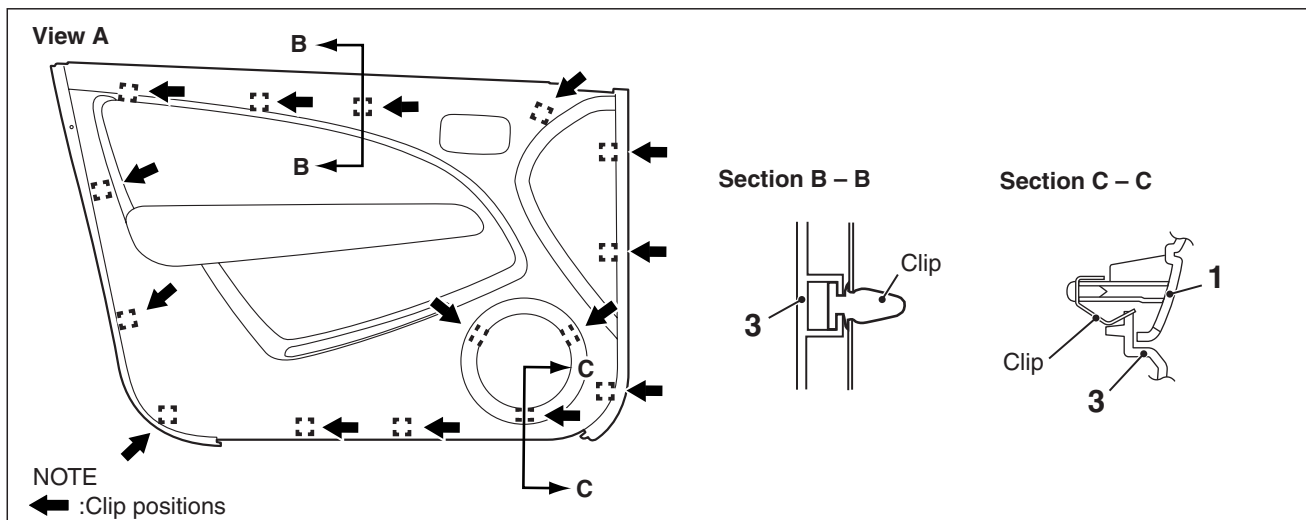
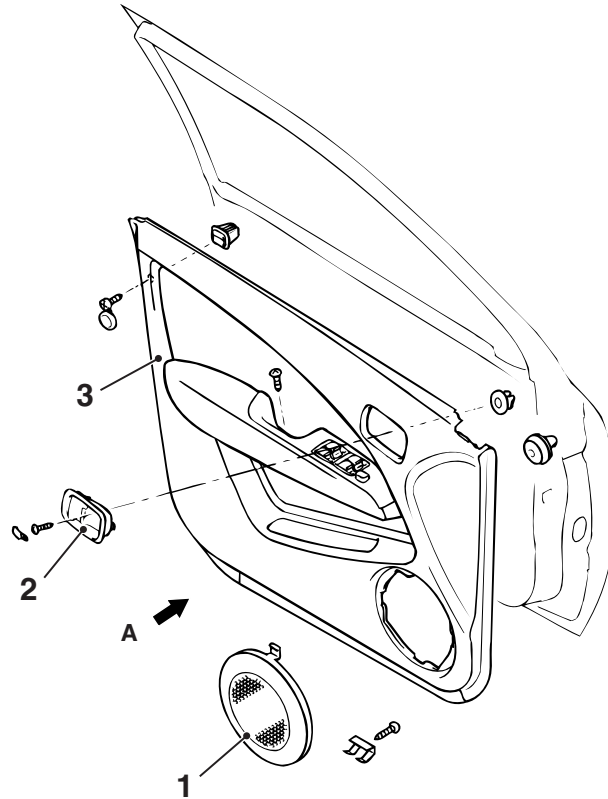
Unclip the front pillar trim and slide out it in the direction shown.

DOOR TRIM

REMOVAL AND INSTALLATION

M1521006400194

<Front door trim>



AC106408AC

Removal steps

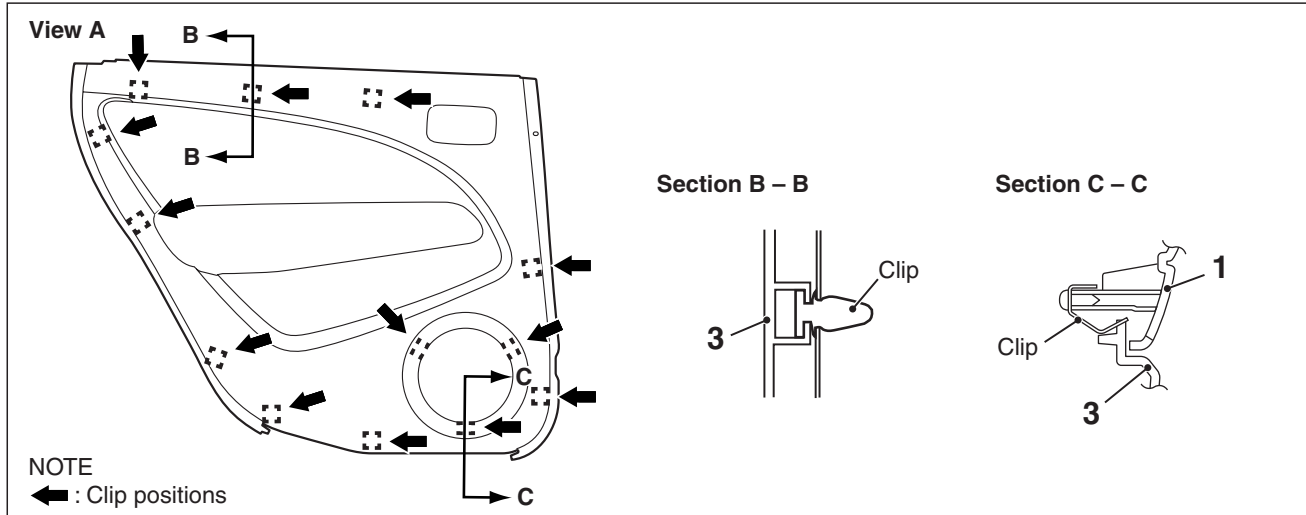
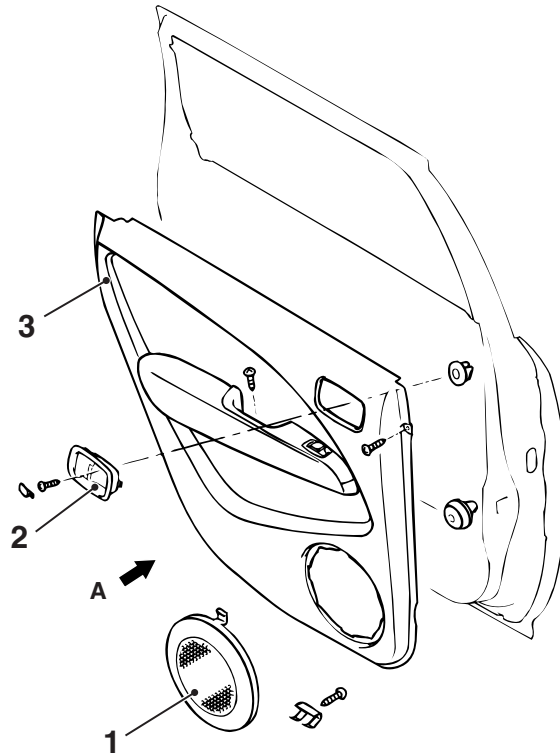
1. Speaker garnish
2. Door inside handle cover

Removal steps (Continued)

- Delta cover (Refer to GROUP 51, Door Mirror [P.51-47](#)).
- 3. Door trim assembly

<<A>>

<Rear door trim>



AC106406 AC

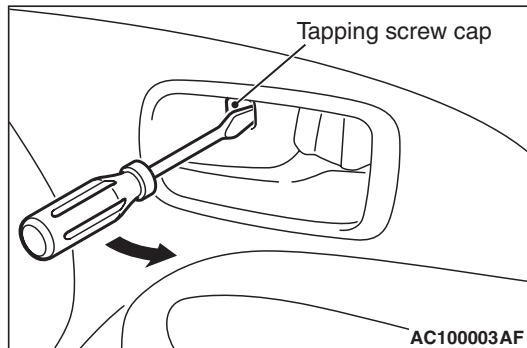
<<A>>

Removal steps

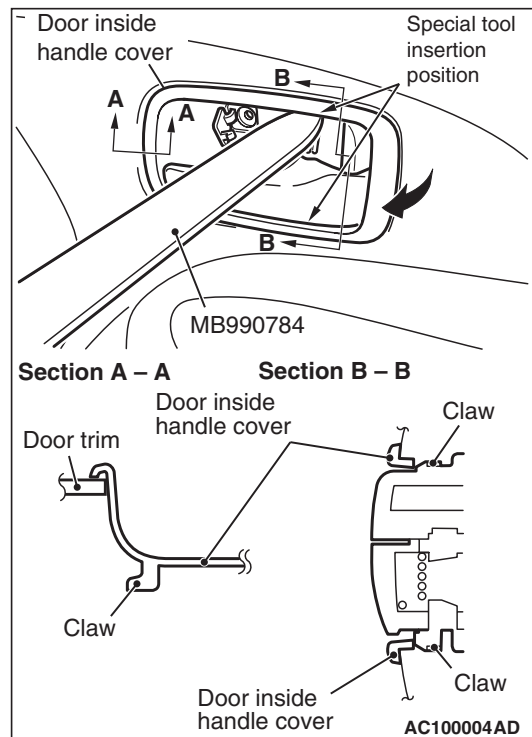
1. Speaker garnish
2. Door inside handle cover
3. Door trim assembly

REMOVAL SERVICE POINT

<<A>> DOOR INSIDE HANDLE COVER REMOVAL



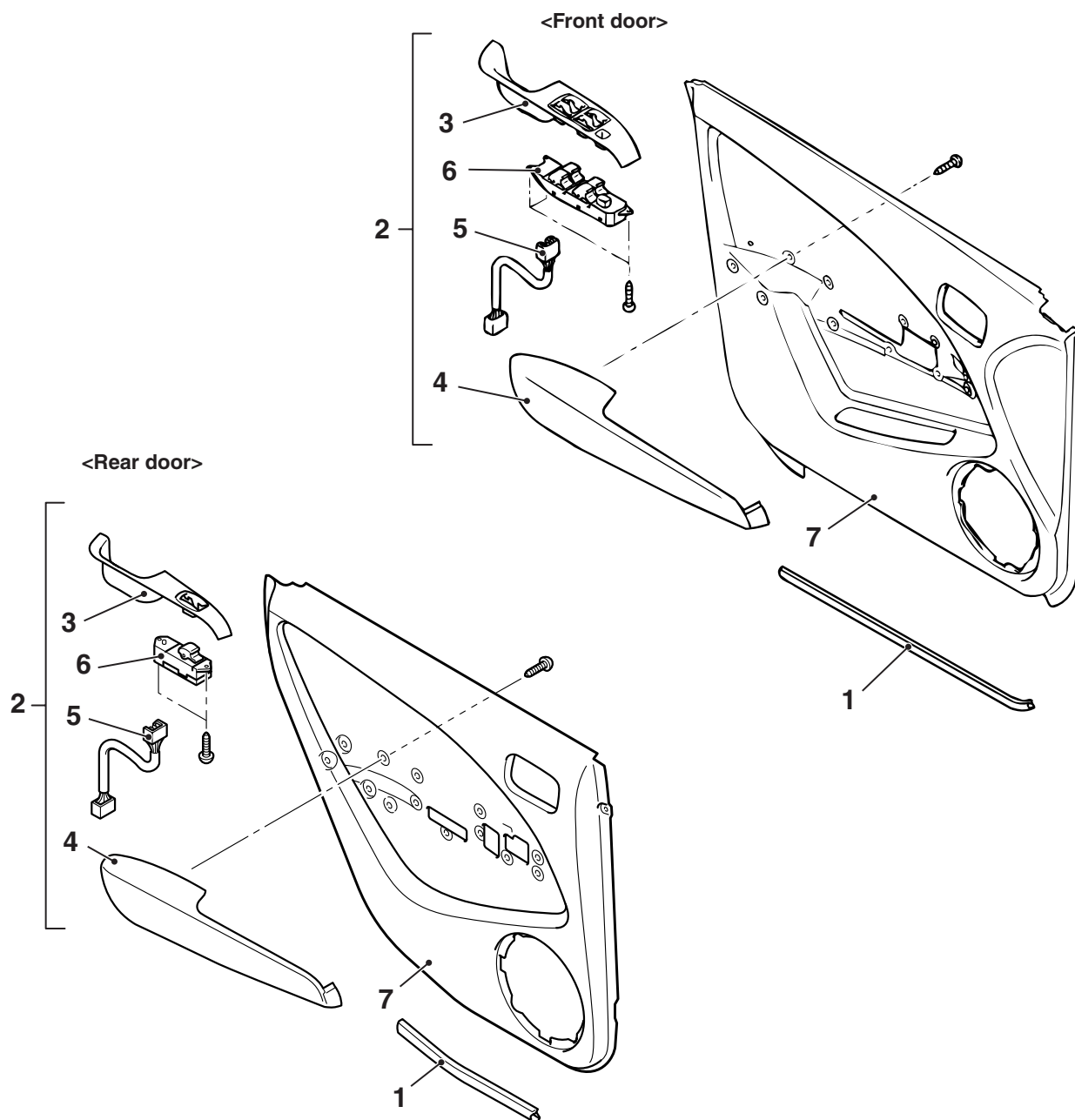
1. Insert a flat-tipped screwdriver into the back end of the tapping screw cap of the door inside handle cover.
2. Try the screwdriver in the direction of the arrow. Remove the cap, then remove the tapping screw.



3. Insert a special tool ornament remover (MB990784) in the gap between the door inside handle cover and door inside handle in the area shown. Then remove the thumb clamp of the door inside handle cover and door inside handle.
4. Insert a special tool from the back end of the door inside handle cover to lift it in the direction of the arrow. Then remove the door inside handle cover.

DISASSEMBLY AND REASSEMBLY

M1521006900069



AC212484AB

Disassembly steps

1. Door weatherstrip
2. Arm rest assembly
3. Power window switch panel assembly
4. Arm rest

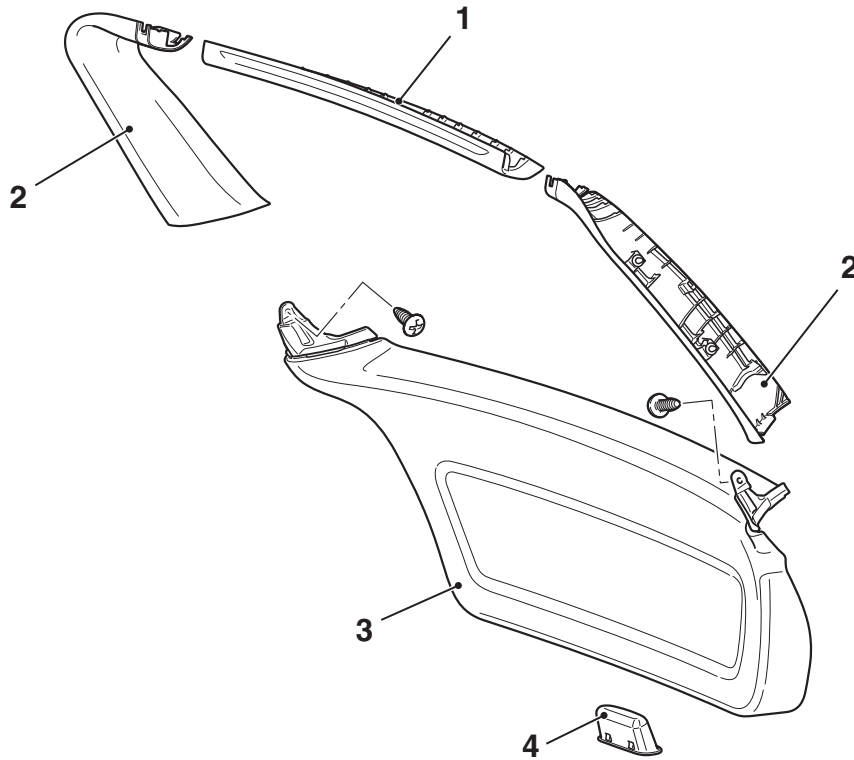
Disassembly steps (Continued)

5. Door harness
6. Power window switch
7. Door trim

TAILGATE TRIM

TAILGATE TRIM

M1521006500210



Removal steps

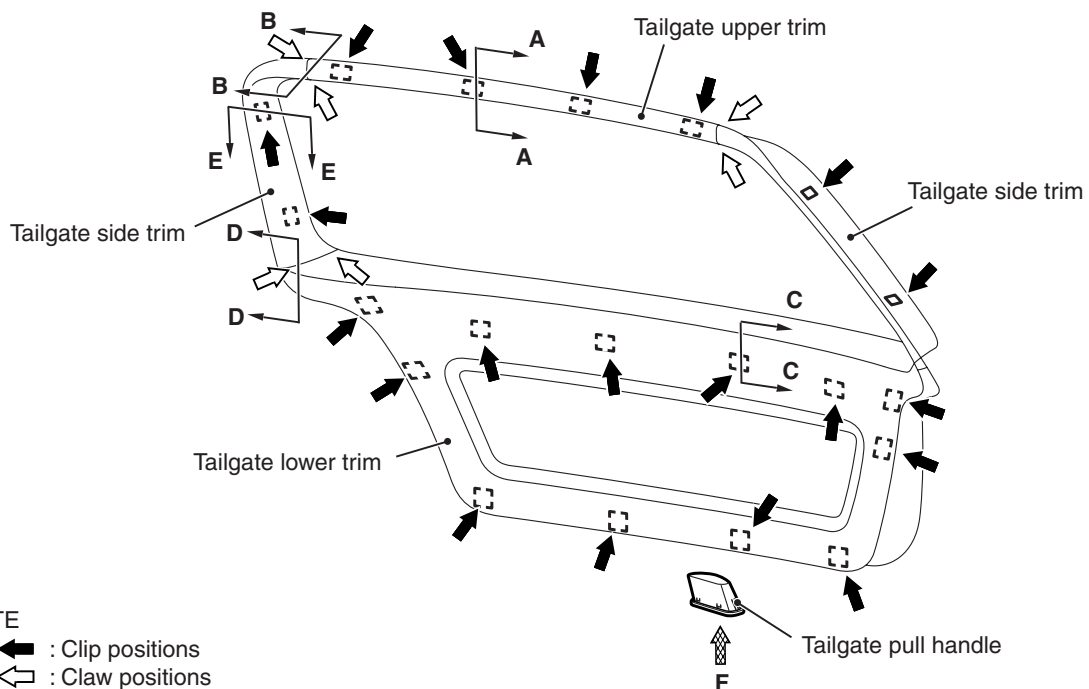
1. Tailgate upper trim
2. Tailgate side trim

Removal steps (Continued)

3. Tailgate lower trim
4. Tailgate pull handle

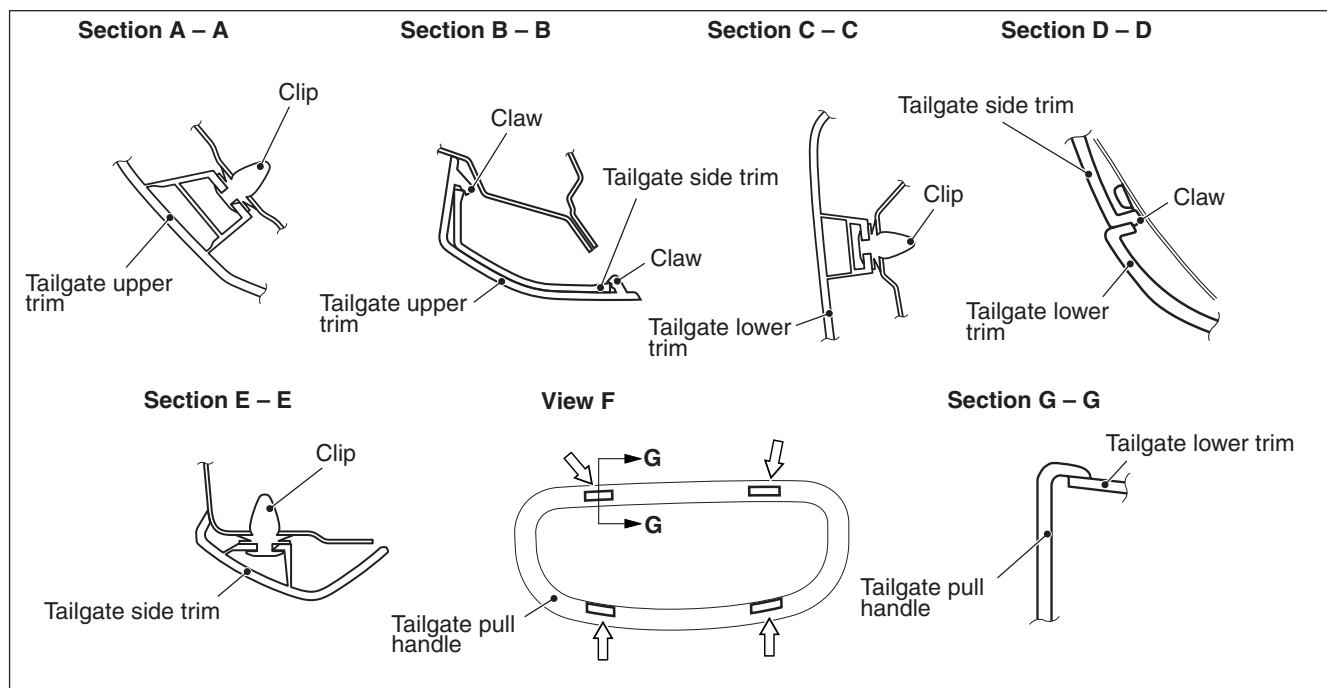
AC313813 AE

CLIP AND CLAW POSITION



NOTE

- (1) : Clip positions
 (2) : Claw positions



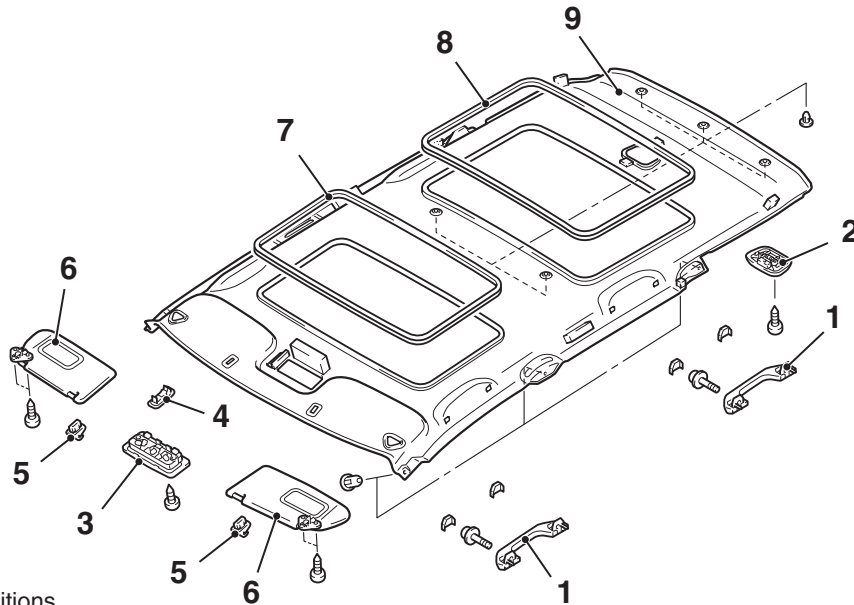
HEADLINING

REMOVAL AND INSTALLATION

M1521001400627

Pre-removal and Post-installation Operation

- Removal and Installation of Front Pillar Trim, Centre Pillar Trim Upper, Quarter Trim Upper (Refer to P.52A-19).



NOTE
← : Clip positions

AC503498AB

Removal steps

1. Assist grip
2. Rear room lamp assembly
3. Map lamp and front room lamp assembly
4. Sunroof switch cover <Vehicle with sunroof>
5. Sun visor holder

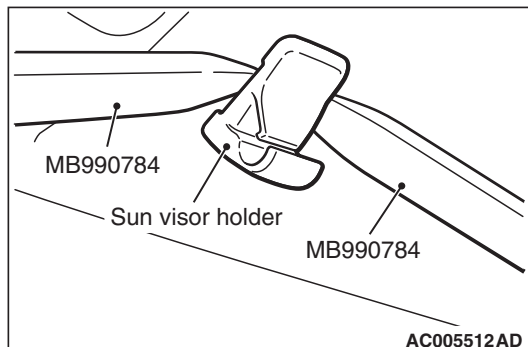
Removal steps (Continued)

6. Sun visor assembly
7. Front roof rail edge trim <Vehicles with sunroof>
8. Rear roof rail edge trim <Vehicles with sunroof>
9. Headlining

<<A>>

REMOVAL SERVICE POINT

<<A>> SUN VISOR HOLDER REMOVAL

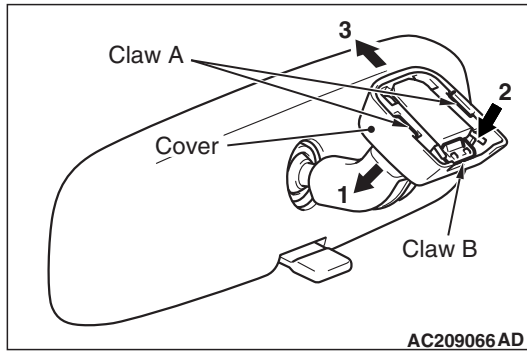


Insert the special tool ornament remover (MB990784) into side claws of the sun visor holder through the both sides to remove the hinges.

INSIDE REAR VIEW MIRROR

M1521002600259

REMOVAL SERVICE POINT



1. Disengage the claw A and lower the cover toward arrow 1 direction.
2. Push the claw B toward arrow 2 direction to unlock, and pull out the mirror toward arrow 3 direction.

FRONT SEAT ASSEMBLY

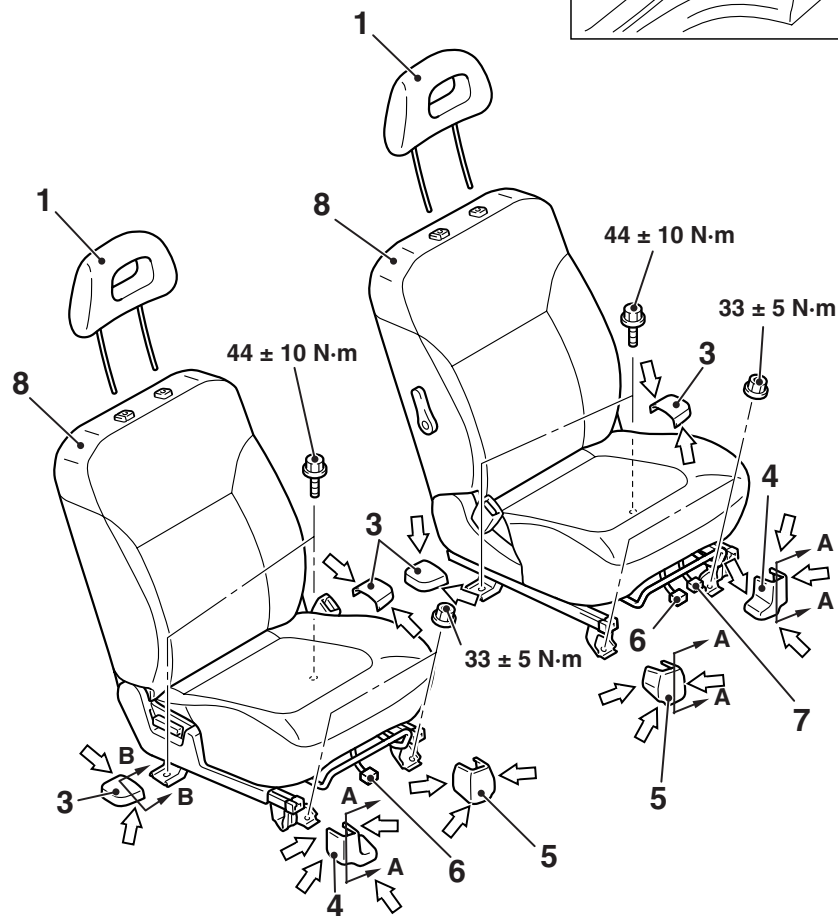
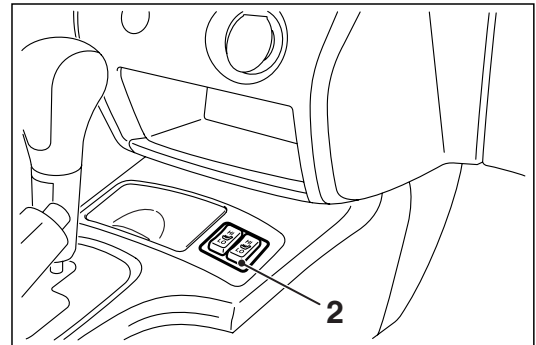
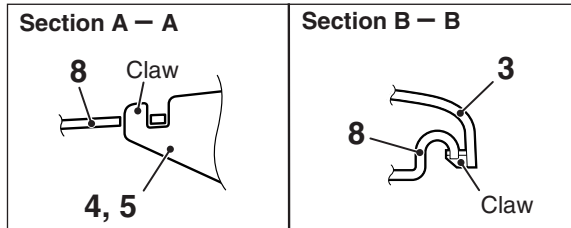
REMOVAL AND INSTALLATION

M1522001300537

<L.H. DRIVE VEHICLES>

Pre-removal and Post-installation Operation

- Removal and Installation of Rear Floor Console Assembly (Refer to P.52A-15).



NOTE
⇐ : Claw positions

AC300055AC

- Headrest
- Heated seat switch <Option - Vehicles for Argentina>
- Front seat anchor cover
- Seat anchor cover outer
- Seat anchor cover inner

Front seat assembly removal steps (Continued)

- Heater harness connector <Option - Vehicles for Argentina>
- Seat belt switch connector <Vehicles for GCC (Driver's side)>

>>A<< 8. Front seat assembly

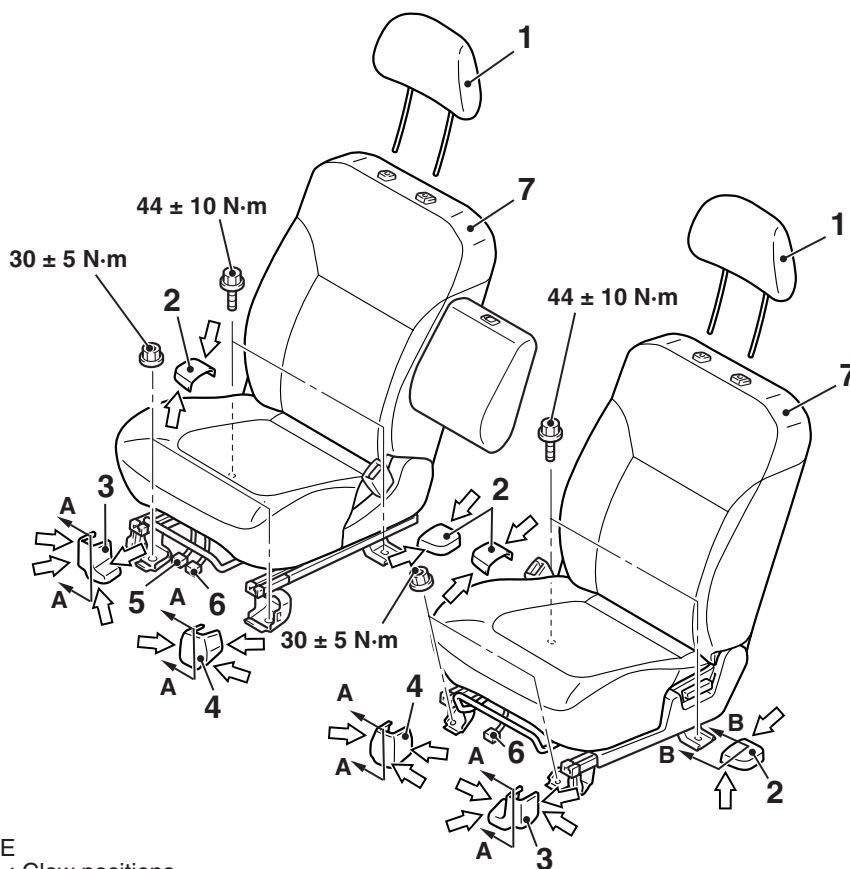
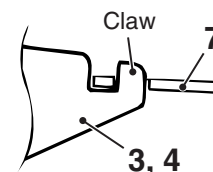
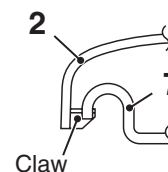
<R.H. DRIVE VEHICLES>

CAUTION

For the removal of the front seat assembly on vehicles with the side-airbags, refer to GROUP 52B, Service Precautions **P.52B-4** and Air Bag Module and Clock Spring **P.52B-87**.

Pre-removal and Post-installation Operation

- Removal and Installation of Floor Console Assembly (Refer to **P.52A-15**).

**Section A - A****Section B - B****NOTE**

↔ : Claw positions

AC309635 AC

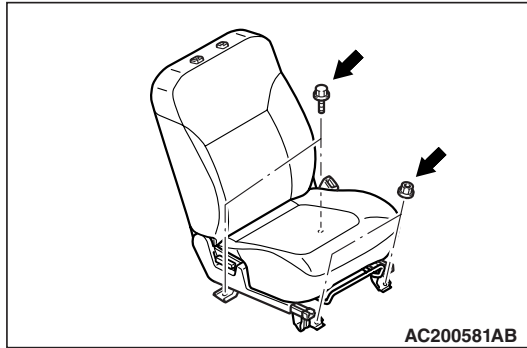
- Headrest
- Front seat assembly removal steps**
- Front seat anchor cover
 - Seat anchor cover outer
 - Seat anchor cover inner
 - Seat belt switch connector
<Vehicles for Australia and New Zealand (Driver's side)>

Front seat assembly removal steps (Continued)

- Side-airbag module (squib) connector <Vehicles with side-airbag system>
- Front seat assembly

INSTALLATION SERVICE POINT

>>A<< FRONT SEAT ASSEMBLY INSTALLATION



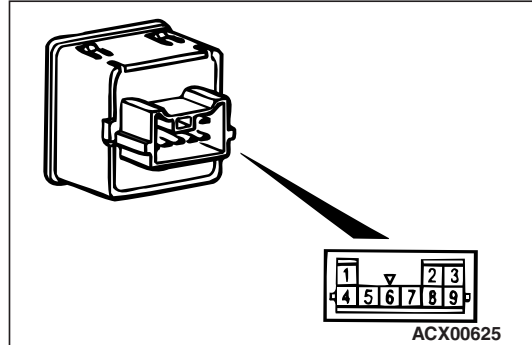
1. Temporarily tighten the nuts and bolts in all mounting locations shown in the illustration with no load applied to the front seat cushion and check the operation of the seat slide.

2. Tighten the nuts and bolts in all mounting locations to the specified torque.

INSPECTION

HEATED SEAT SWITCH CHECK

M1522005500049

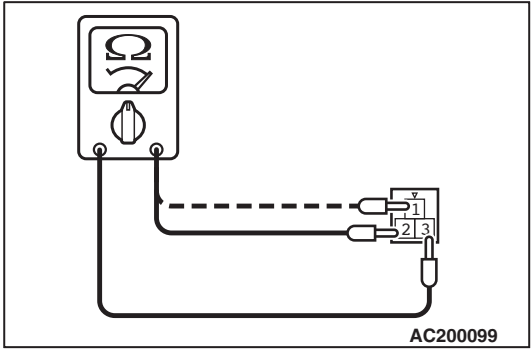


1. Check for continuity between terminals.

Item	Switch position	Tester connection	Specified condition
Driver's seat side	HI	1 - 3, 1 - 5, 1 - 8, 3 - 5, 3 - 8, 5 - 8	Less than 2 ohms
	OFF	1 - 3, 1 - 5, 1 - 8, 3 - 5, 3 - 8, 5 - 8	Open circuit
	LO	3 - 5, 3 - 8, 5 - 8	Less than 2 ohms
Front passenger's seat side	HI	4 - 5, 4 - 8, 4 - 9, 5 - 8, 5 - 9, 8 - 9	Less than 2 ohms
	OFF	4 - 5, 4 - 8, 4 - 9, 5 - 8, 5 - 9, 8 - 9	Open circuit
	LO	5 - 8, 5 - 9, 8 - 9	Less than 2 ohms

2. Check that the indicator is lighted at HI or LO when battery voltage is supplied to terminal 5, and terminal 8 is grounded.
3. Check that indicator is lighted when battery voltage is supplied to terminals 2 and 6.

SEAT CUSHION HEATER CHECK

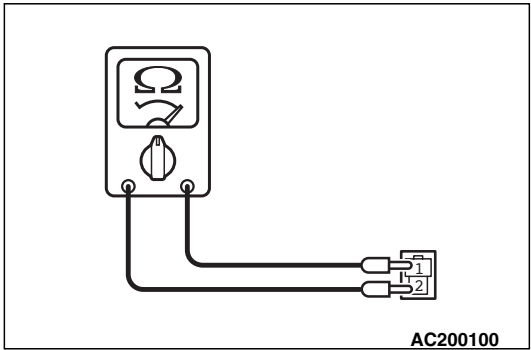


Measure the resistance between terminals.

Standard value:

Measured terminals	Resistance value	NOTE
2 – 3	Approximately $4.8\ \Omega \pm 10\ \%$	At room temperature 20 °C
1 – 3	$5.2\ \Omega \pm 10\ \%$	

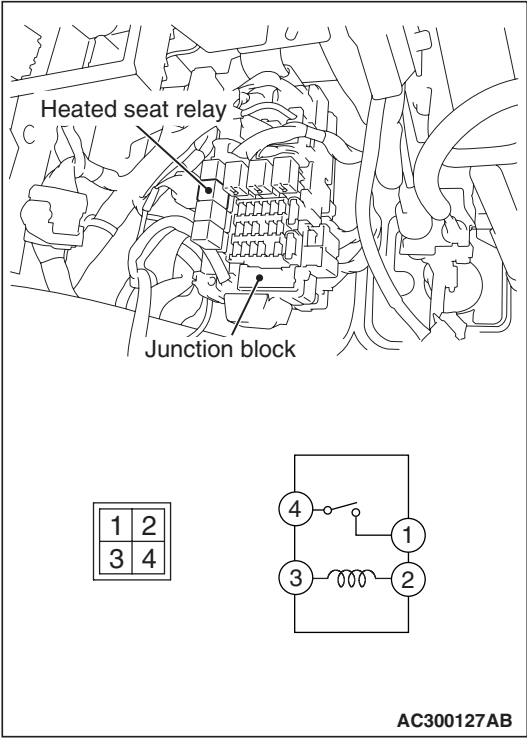
SEATBACK HEATER CHECK



Measure the resistance between terminals.

Standard value: Approximately $4.8\ \Omega \pm 10\ \%$
(At room temperature 20 °C)

HEATED SEAT RELAY CONTINUITY CHECK

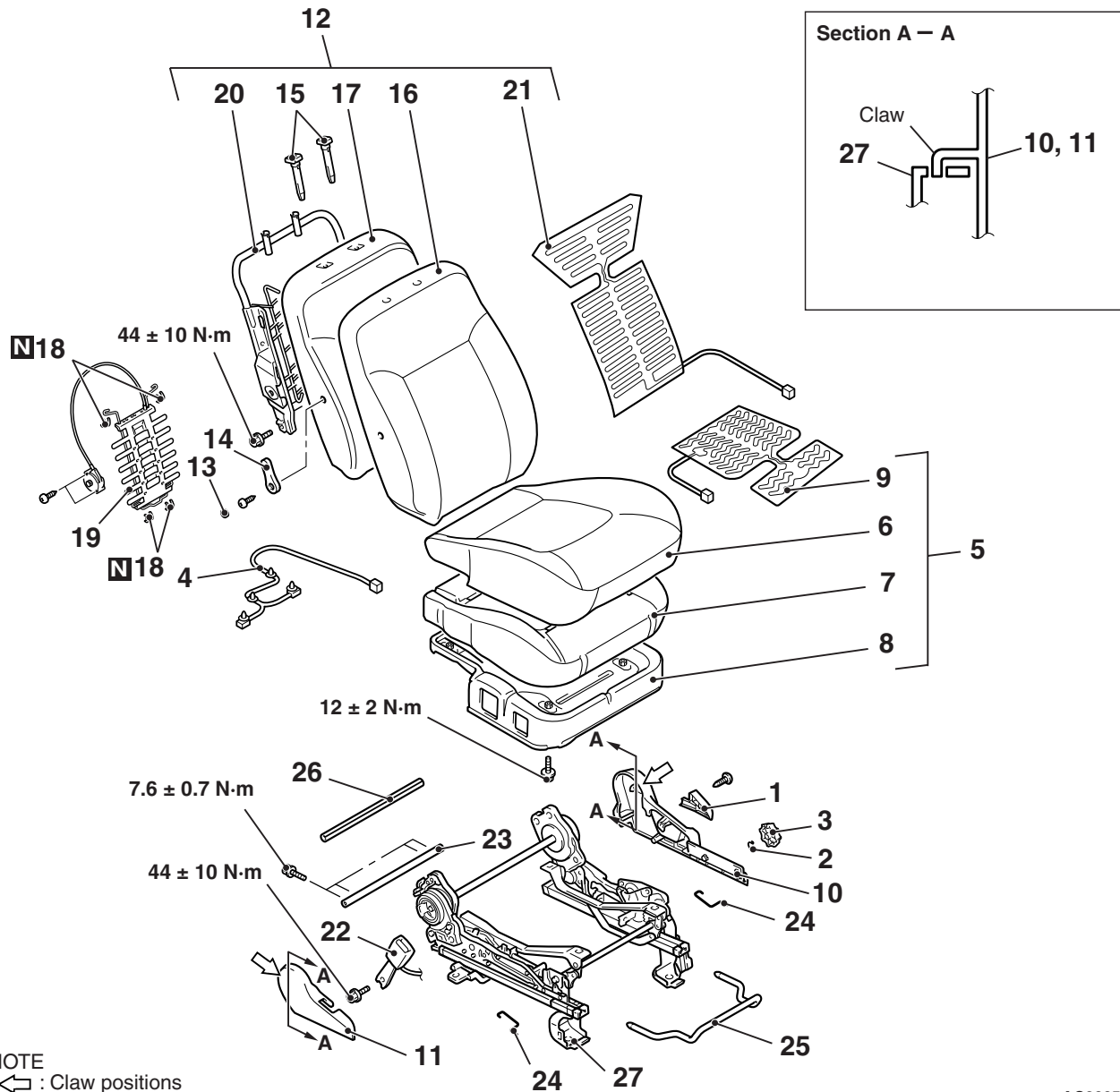


Battery voltage	Tester connection	Specified condition
Not applied	1 - 4	Open circuit
<ul style="list-style-type: none">Connect terminal 3 to the positive battery terminalConnect terminal 2 to the negative battery terminal	1 - 4	Less than 2 ohms

DISASSEMBLY AND REASSEMBLY

M1522001500616

<L.H. DRIVE VEHICLES>



NOTE
↔ : Claw positions

Disassembly steps

1. Reclining knob
2. Pin
3. Height adjuster knob (Driver's side)
4. Heater harness assembly <Option - vehicles for Argentina>
5. Front seat cushion assembly
6. Front seat cushion cover
7. Front seat cushion pad
8. Front seat cushion frame
9. Seat cushion heater <Option - vehicles for Argentina>
10. Reclining cover
11. Shield cover
12. Front seatback assembly
13. Lumbar support cap <GLS>

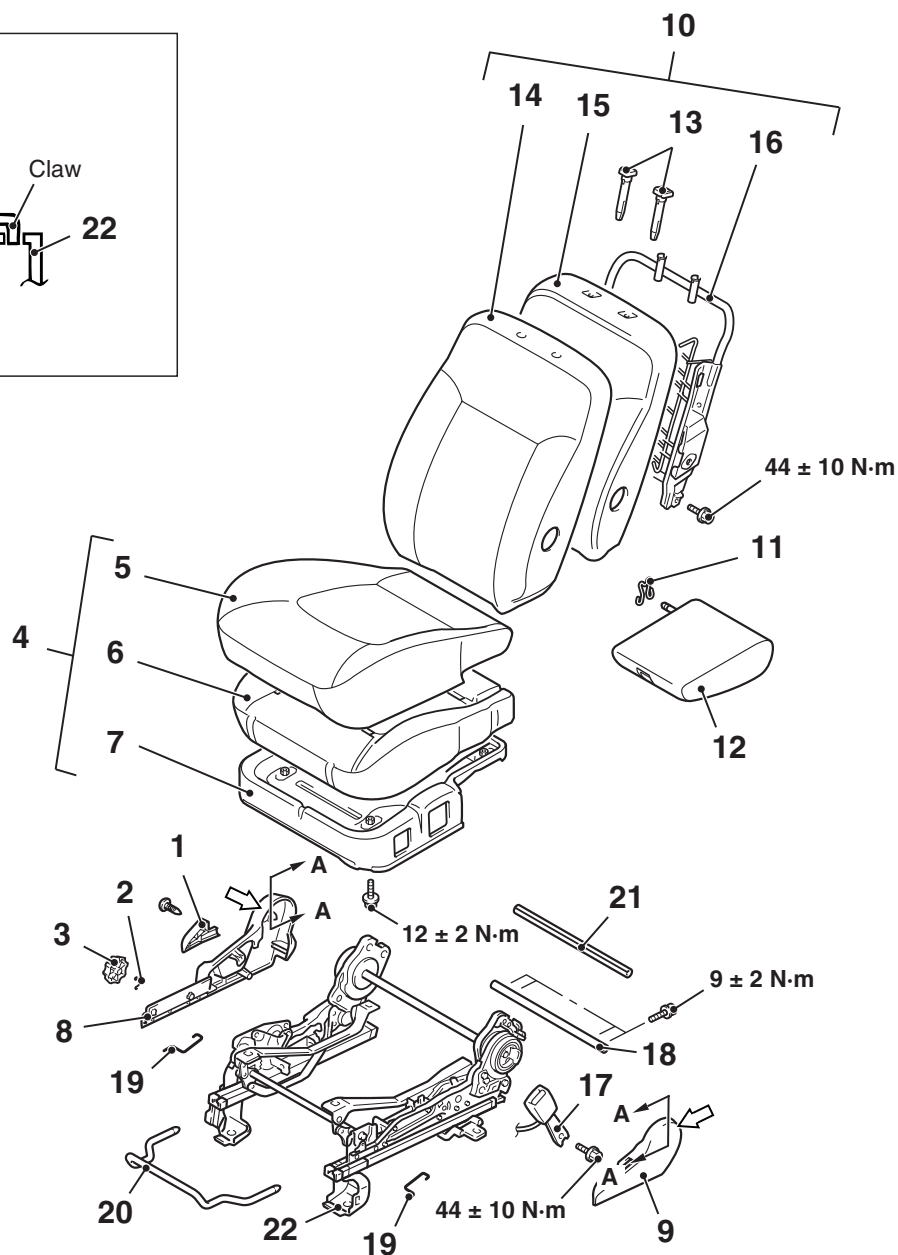
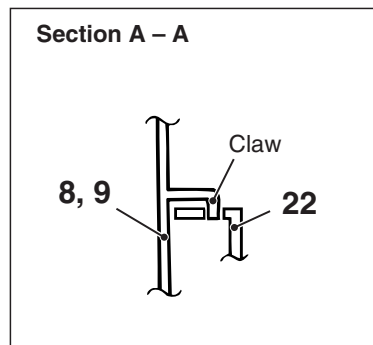
<<A>>

Disassembly steps (Continued)

14. Lumbar support lever <GLS>
15. Headrest guide
16. Front seatback cover
17. Front seatback pad
18. Lumbar support clip <GLS>
19. Lumbar support <GLS>
20. Front seatback frame
21. Seatback heater <Option - Vehicles for Argentina>
22. Inner seat belt
23. Shaft
24. Pin
25. Slide handle
26. Shaft protector
27. Seat slide adjuster

AC200534 AD

<R.H. DRIVE VEHICLES>



NOTE
 : Claw positions

Disassembly steps

1. Reclining knob
2. Pin
3. Height adjuster knob (Driver's side)
4. Front seat cushion assembly
5. Front seat cushion cover
6. Front seat cushion pad
7. Front seat cushion frame
8. Reclining cover
9. Shield cover
10. Front seatback assembly
11. Pin (Driver's side)
12. Arm rest assembly (Driver's side)

<<A>>

Disassembly steps (Continued)

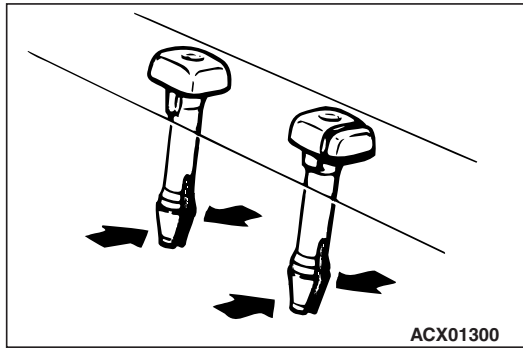
13. Headrest guide
14. Front seatback cover
15. Front seatback pad
16. Front seatback frame
17. Inner seat belt
18. Shaft
19. Pin
20. Seat slide handle
21. Shaft protector
22. Seat slide adjuster

AC102261AE

REMOVAL SERVICE POINT

<<A>> HEADRESTRAINT GUIDE

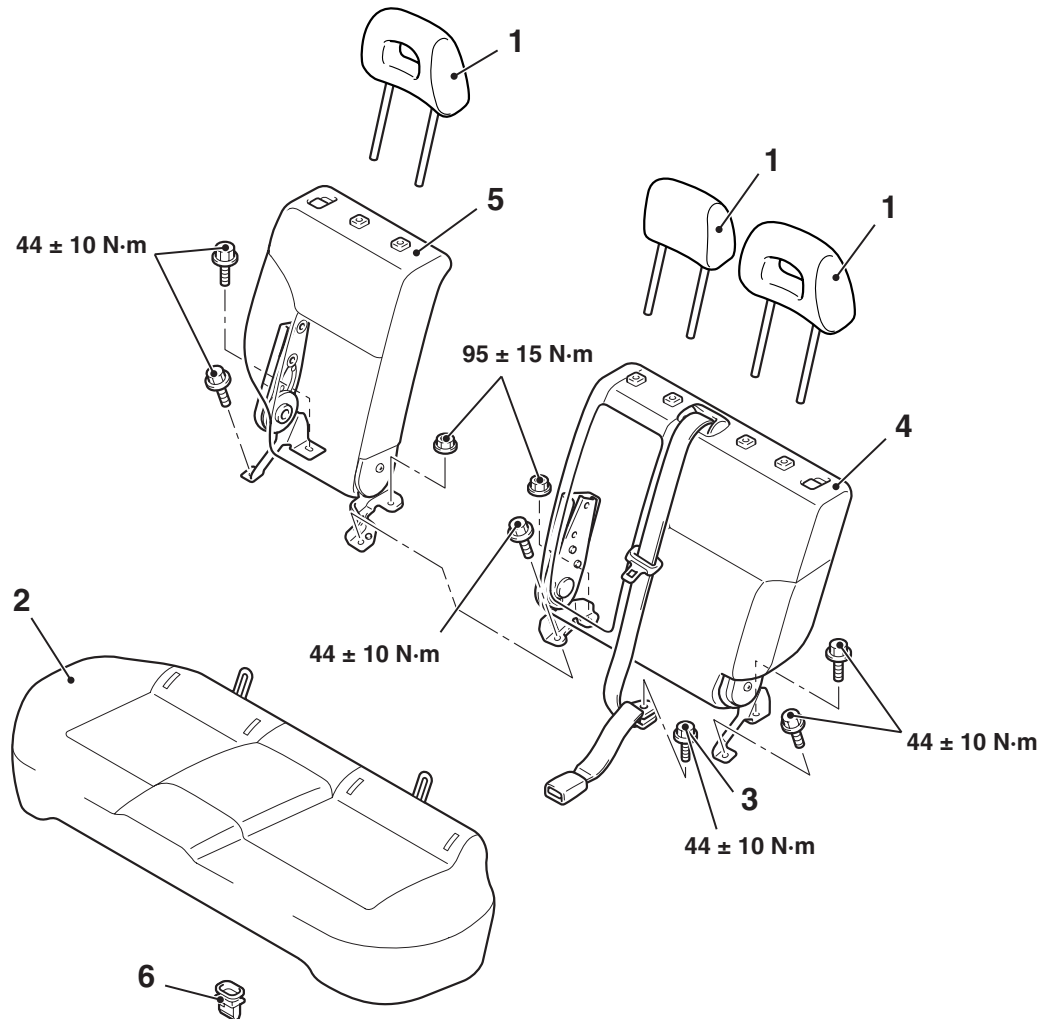
REMOVAL



REAR SEAT ASSEMBLY**REMOVAL AND INSTALLATION**

M1522001800316

<VEHICLES FOR SOUTH AFRICA, ARGENTINA, AUSTRALIA AND NEW ZEALAND>



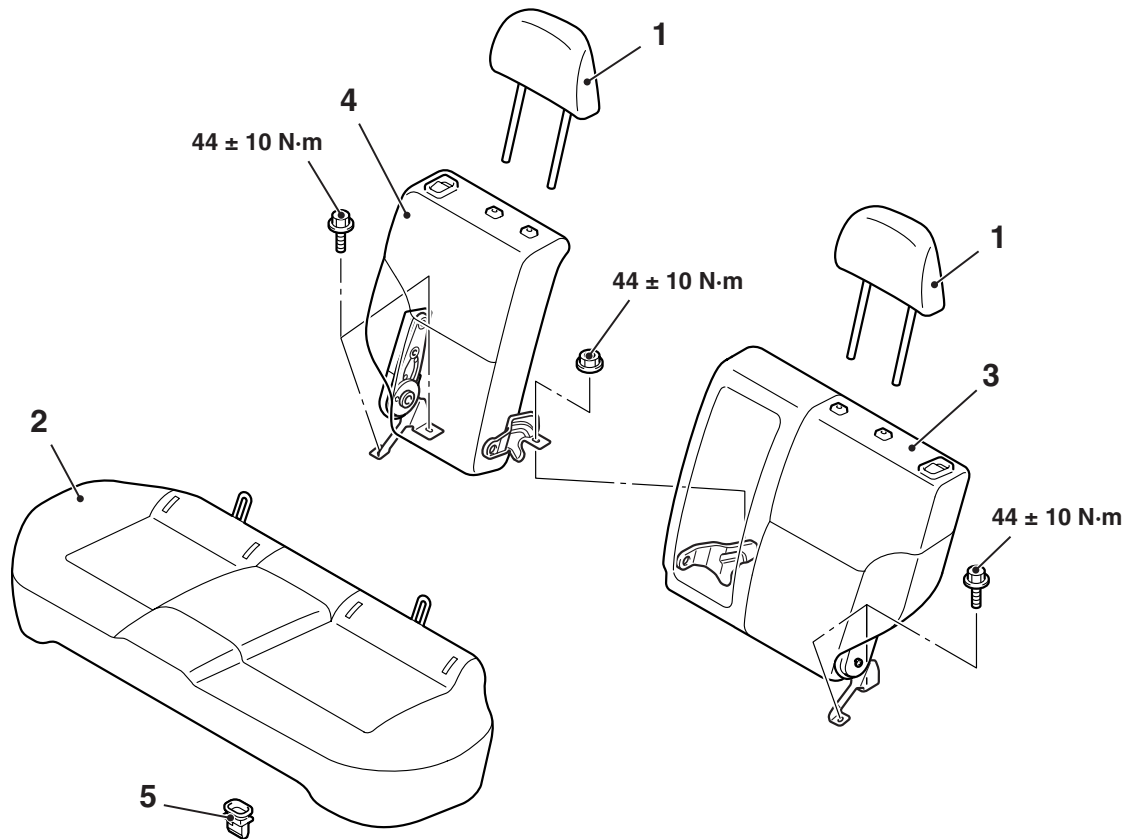
AC300146AB

- >>A<<
1. Headrestraint
 2. Rear seat cushion assembly
 3. Inner seat belt and centre seat belt installation bolt

Removal steps**Removal steps (Continued)**

4. Rear seatback assembly (LH)
5. Rear seatback assembly (RH)
6. Rear seat hook

<EXCEPT VEHICLES FOR SOUTH
AFRICA, ARGENTINA AND AUSTRALIA>



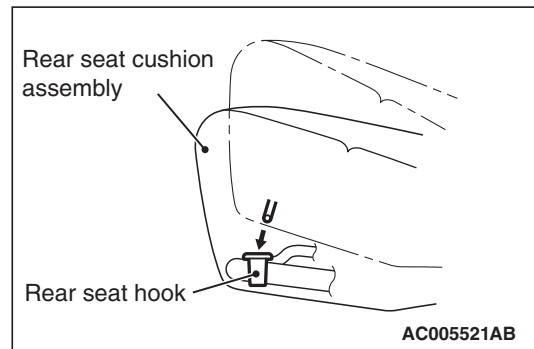
AC101348AC

- >>A<<
1. Headrest
 2. Rear seat cushion assembly
 3. Rear seatback assembly (LH)
 4. Rear seatback assembly (RH)
 5. Rear seat hook

Removal steps

INSTALLATION SERVICE POINT

**>>A<< REAR SEAT CUSHION ASSEMBLY
INSTALLATION**

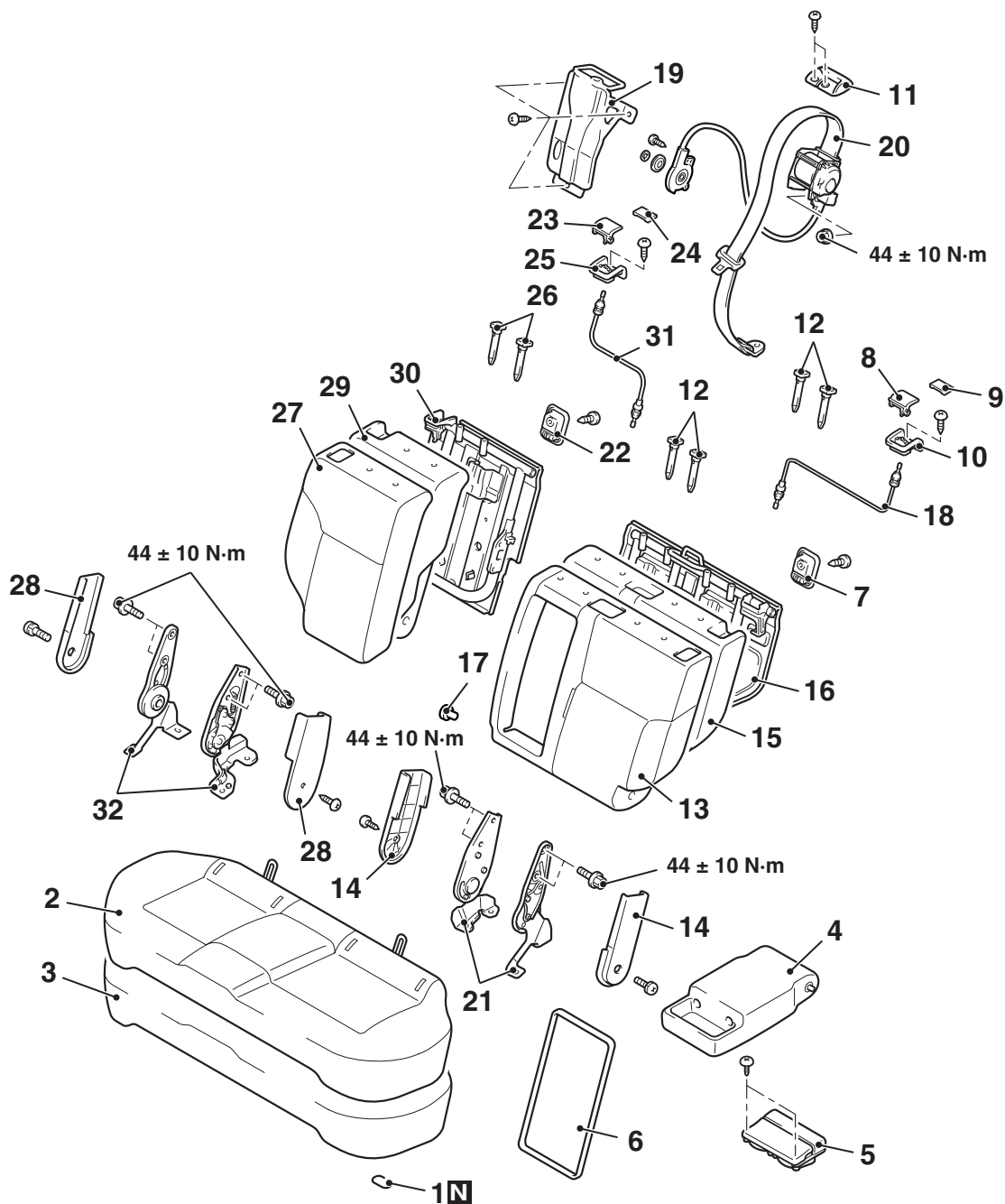


Fit the rear seat cushion into the rear seat hook securely.

DISASSEMBLY AND REASSEMBLY

M1522002000379

<VEHICLES FOR SOUTH AFRICA, ARGENTINA, AUSTRALIA AND NEW ZEALAND >



AC200082 AB

Rear seat cushion disassembly steps

1. Hog ring
2. Rear seat cushion cover
3. Rear seat cushion pad

Rear seatback (LH) disassembly steps

4. Arm rest assembly
5. Arm rest cup holder
6. Arm rest board
7. Tether anchor garnish

<<A>>

Rear seatback (LH) disassembly steps (Continued)

8. Reclining knob
9. Cap
10. Reclining knob garnish
11. Centre seat belt garnish
12. Headrest guide
13. Rear seatback cover
14. Reclining cover
15. Rear seatback pad
16. Rear seatback frame assembly
17. Arm rest bushing

**Rear seatback (LH) disassembly
steps (Continued)**

- 18. Reclining cable
- 19. Centre seat belt cover <<A>>
- 20. Centre seat belt
- 21. Reclining adjuster

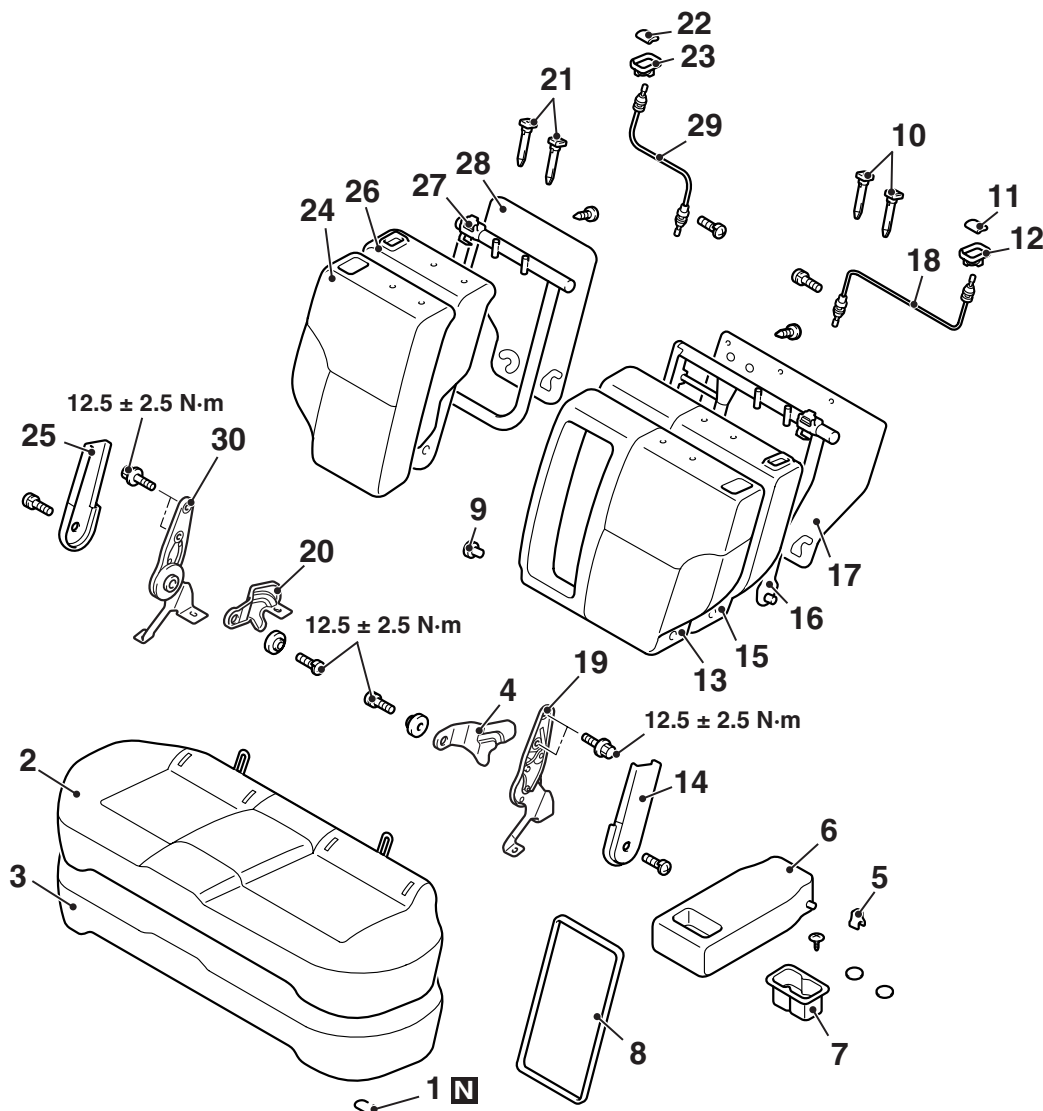
**Rear seatback (RH) disassembly
steps**

- 22. Tether anchor garnish
- 23. Reclining knob
- 24. Cap

**Rear seatback (RH) disassembly
steps (Continued)**

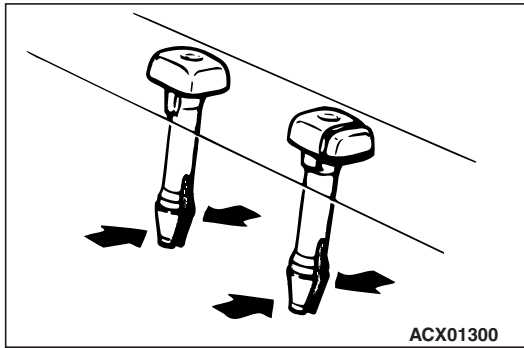
- 25. Reclining knob garnish
- 26. Headrest guide
- 27. Rear seatback cover
- 28. Reclining adjuster cover
- 29. Rear seatback pad
- 30. Rear seatback frame
- 31. Reclining cable
- 32. Reclining adjuster

<<A>>



20. Hinge bracket
21. Headrest restraint guide
22. Knob
23. Knob garnish
24. Rear seatback cover
25. Reclining adjuster cover
26. Rear seatback pad
27. Rear seatback frame
28. Rear seatback board
29. Cable
30. Reclining adjuster

REMOVAL SERVICE POINT
<<A>> HEADRESTRAINT GUIDE
REMOVAL



FRONT SEAT BELT

REMOVAL AND INSTALLATION

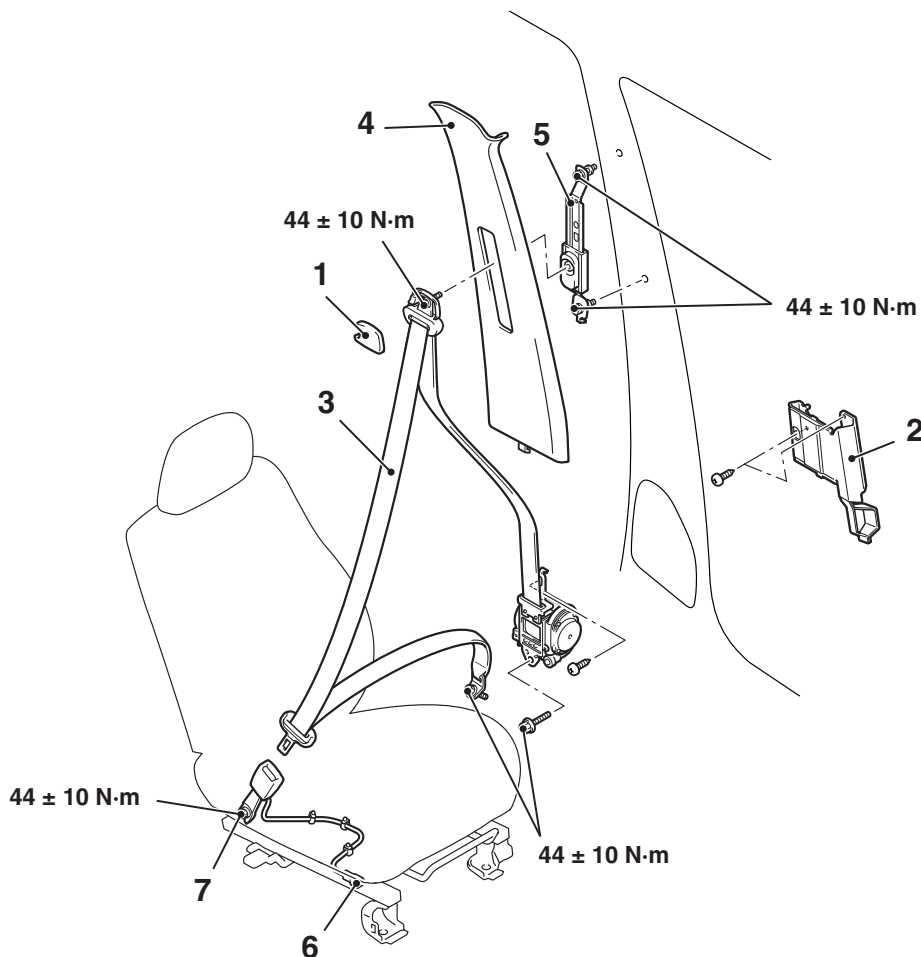
M1523001300507

CAUTION

SRS: Before removing and installing the seat belts with pre-tensioner, refer to GROUP 52B, Seat Belt with Pre-tensioner [P.52B-96](#).

Pre-removal and Post-installation Operation

- Turn the ignition key to the "LOCK" (OFF) position.
- Disconnect the negative battery terminal.



AC300081AB

Outer seat belt removal steps

1. Sash guide cover
- Centre pillar trim lower (Refer to [P.52A-19](#)).
2. Bracket
3. Outer seat belt (Refer to GROUP 52B, Seat Belt with Pre-tensioner [P.52B-96](#)).

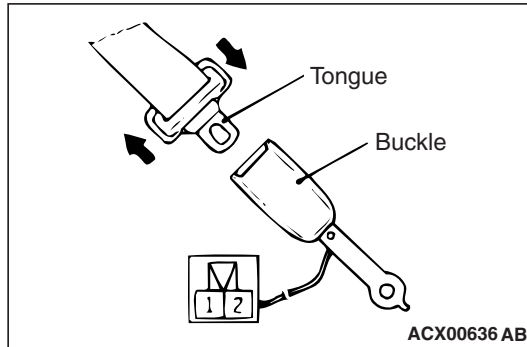
Outer seat belt removal steps

4. Centre pillar trim upper (Refer to [P.52A-19](#)).
 5. Adjustable seat belt anchor
- Inner seat belt removal steps**
6. Harness connector (Driver's side)
<Vehicles for GCC, Hong Kong, Australia and New Zealand >
 - Shield cover (Refer to [P.52A-33](#)).
 7. Inner seat belt

INSPECTION

SEAT BELT BUCKLE SWITCH CONTINUITY CHECK

M1523004400064



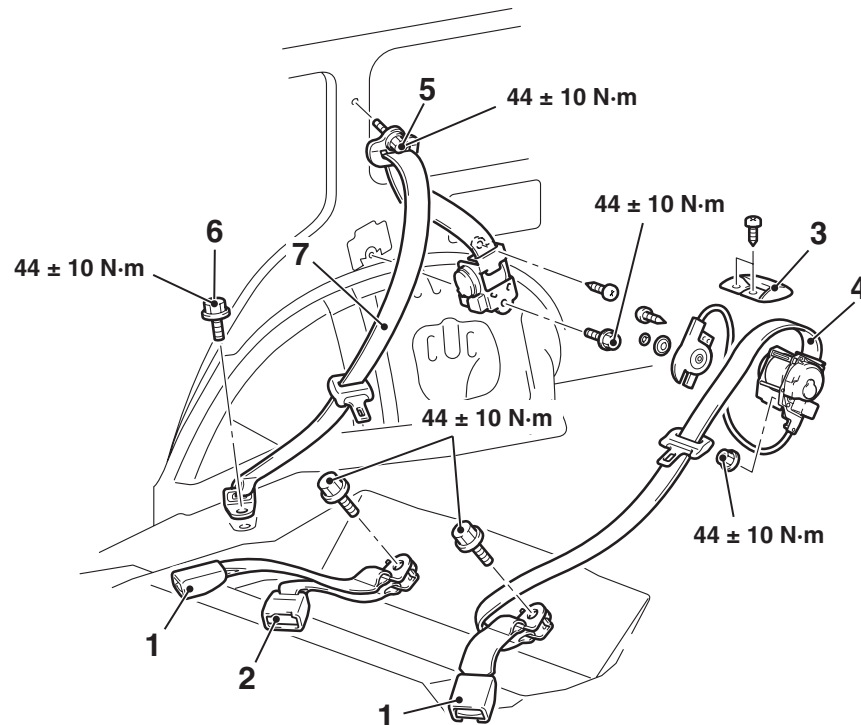
Items	Tester connection	Specified condition
Fastened seat belt	1 – 2	Open circuit
Unfastened seat belt	1 – 2	Less than 2 ohms

REAR SEAT BELT

REMOVAL AND INSTALLATION

M1523001600382

<VEHICLES FOR SOUTH AFRICA, ARGENTINA, AUSTRALIA AND NEW ZEALAND>



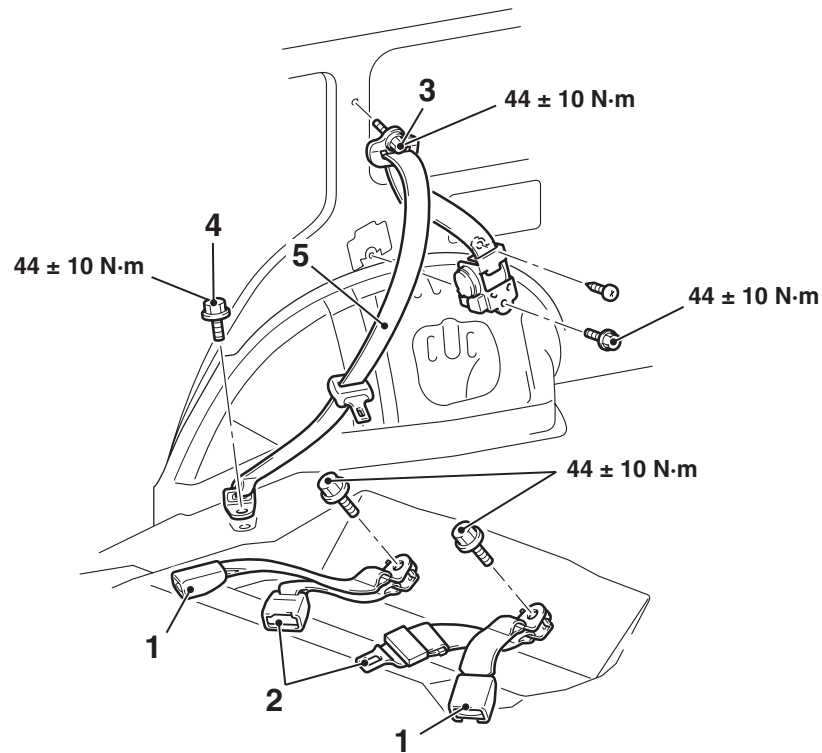
Removal steps

- Rear seat cushion assembly (Refer to [P.52A-36](#)).
 - Rear seatback assembly (LH) (Refer to [P.52A-36](#)).
1. Inner seat belt
 2. Centre seat belt inner
 3. Centre seat belt garnish

Removal steps (Continued)

- Quarter trim upper (Refer to [P.52A-19](#)).
4. Centre seat belt outer (Refer to [P.52A-38](#)).
 5. Seat belt shoulder anchor bolt
 6. Seat belt lower anchor bolt
 7. Outer seat belt

<EXCEPT VEHICLES FOR SOUTH
AFRICA, ARGENTINA, AUSTRALIA AND
NEW ZEALAND>



AC300096 AB

Removal steps

- Rear seat cushion assembly (Refer to [P.52A-36](#)).
- 1. Inner seat belt
- 2. Centre seat belt

Removal steps (Continued)

- Quarter trim lower (Refer to [P.52A-19](#)).
- 3. Seat belt shoulder anchor bolt
- 4. Seat belt lower anchor bolt
- 5. Outer seat belt