

120002165

GENERAL INFORMATION	2	FRONT DIFFERENTIAL MOUNT	7
SPECIAL TOOLS	3	Front Differential Mount Insulator	
		Replacement	8
FRONT ENGINE MOUNT* <2WD>	4	SUSPENSION CROSSMEMBER	
<4WD>	5	ASSEMBLY <2WD>	9
REAR ENGINE MOUNT	6	<4WD>	11

The SRS includes the following components: impact sensors, SRS diagnosis unit, SRS warning lamp, air bag module, clock spring and interconnecting wiring. Other SRS-related components (that may have to be removed/installed in connection with SRS service or maintenance) are indicated in the table of contents by an asterisk (*).

GENERAL INFORMATION

120000088

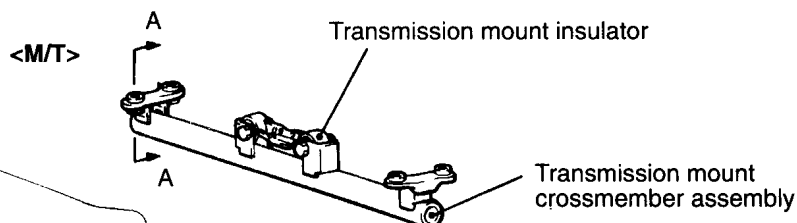
Two crossmembers support total four points:
The engine support crossmember assembly supports the engine via front insulators. The shear compression type insulators prevent engine vibration from entering vehicle.

The transmission mount crossmember assembly is mounted to the body via elastic bushings. It supports the transmission via the elastic insulator. The insulator prevents transmission vibration from entering vehicle. That is called double anti-vibration construction.

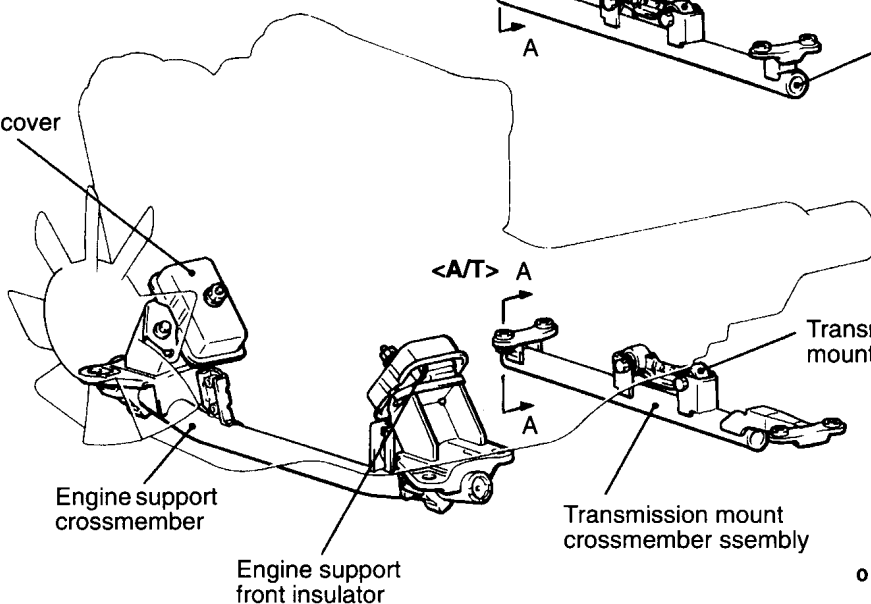
CONSTRUCTION DIAGRAM

120002161

<2WD>



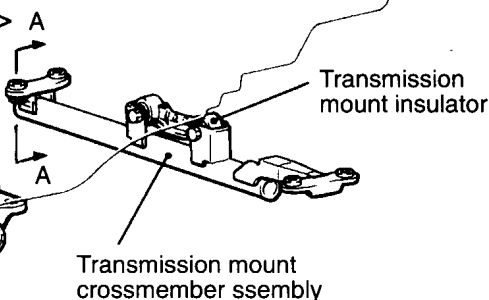
Insulator cover



Engine support crossmember

Engine support front insulator

<A/T>



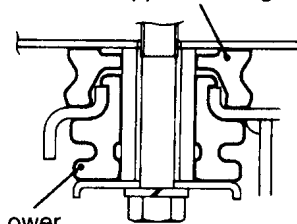
Transmission mount insulator

Transmission mount crossmember assembly

01W0011

Section A-A

Upper bushing

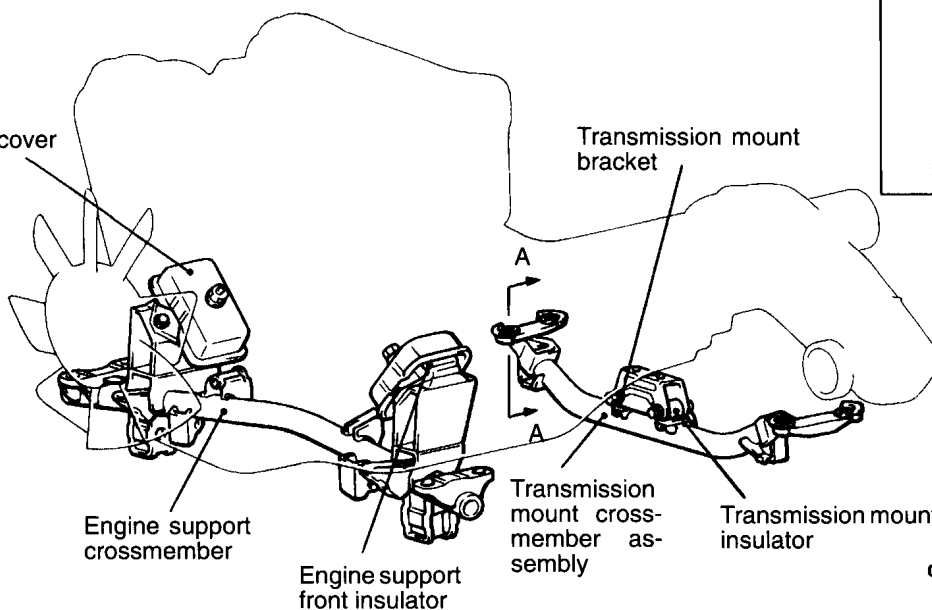


Lower bushing

01W0014

<4WD>

Insulator cover



Engine support crossmember

Engine support front insulator

Transmission mount crossmember assembly

Transmission mount insulator

01W0012

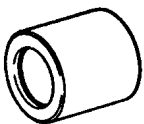

NOTE

The diagram shows the 4G64 engine.

00000426

SPECIAL TOOLS

120000090

Tool	Number	Name	Use
	MB991118	Bushing remover and installer	Driving out and press-fitting of front differential mount insulator
	MB991025	Bushing remover and installer	

FRONT ENGINE MOUNT <2WD>

120000091

REMOVAL AND INSTALLATION

CAUTION: SRS

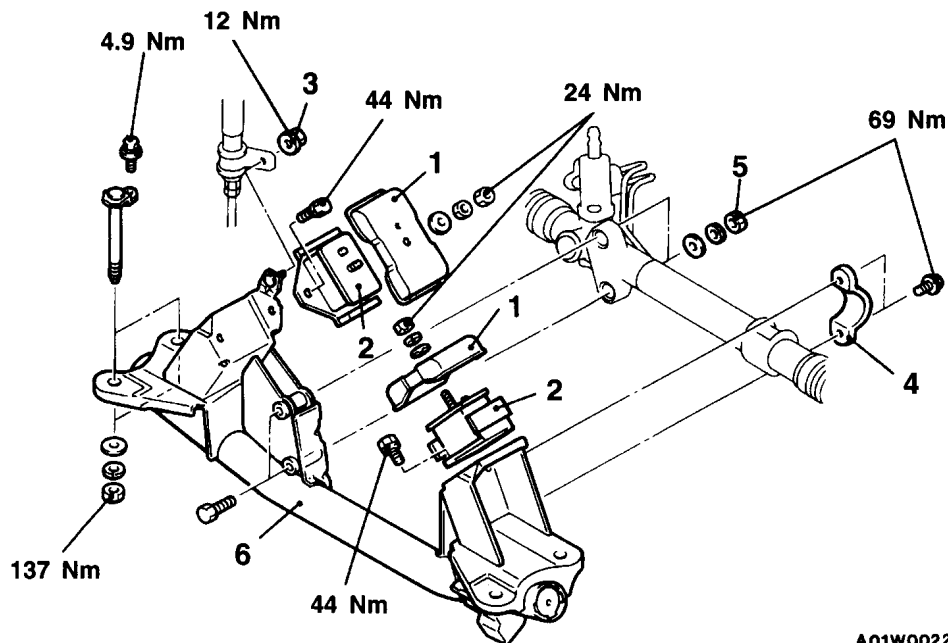
For vehicles with SRS, before removal of steering gear box, refer to GROUP 52B, centre front wheels and remove ignition key. Failure to do so may damage SRS clock spring and render SRS system inoperative, risking serious driver injury.

Pre-removal Operation

- Under Cover Panel Removal
(Refer to GROUP 42 – Under Cover.)
- Stabilizer Bar Removal
(Refer to GROUP 33A – Stabilizer Bar.)

Post-installation Operation

- Wheel Alignment Inspection and Adjustment (Refer to GROUP 33A – Service Adjustment Procedures.)
- Stabilizer Bar Installation
(Refer to GROUP 33A – Stabilizer Bar.)
- Under Cover Panel Installation
(Refer to GROUP 42 – Under Cover.)



A01W0022

Removal steps

- Engine assembly
(Refer to GROUP 11 – Engine assembly.)
- 1. Insulator cover
- 2. Engine support front insulator
- 3. Power steering pressure hose installation nut <4G6>
- 4. Clamp
- 5. Power steering gear and linkage installation nut
- 6. Engine support crossmember assembly

FRONT ENGINE MOUNT <4WD>

120000092

REMOVAL AND INSTALLATION

CAUTION: SRS

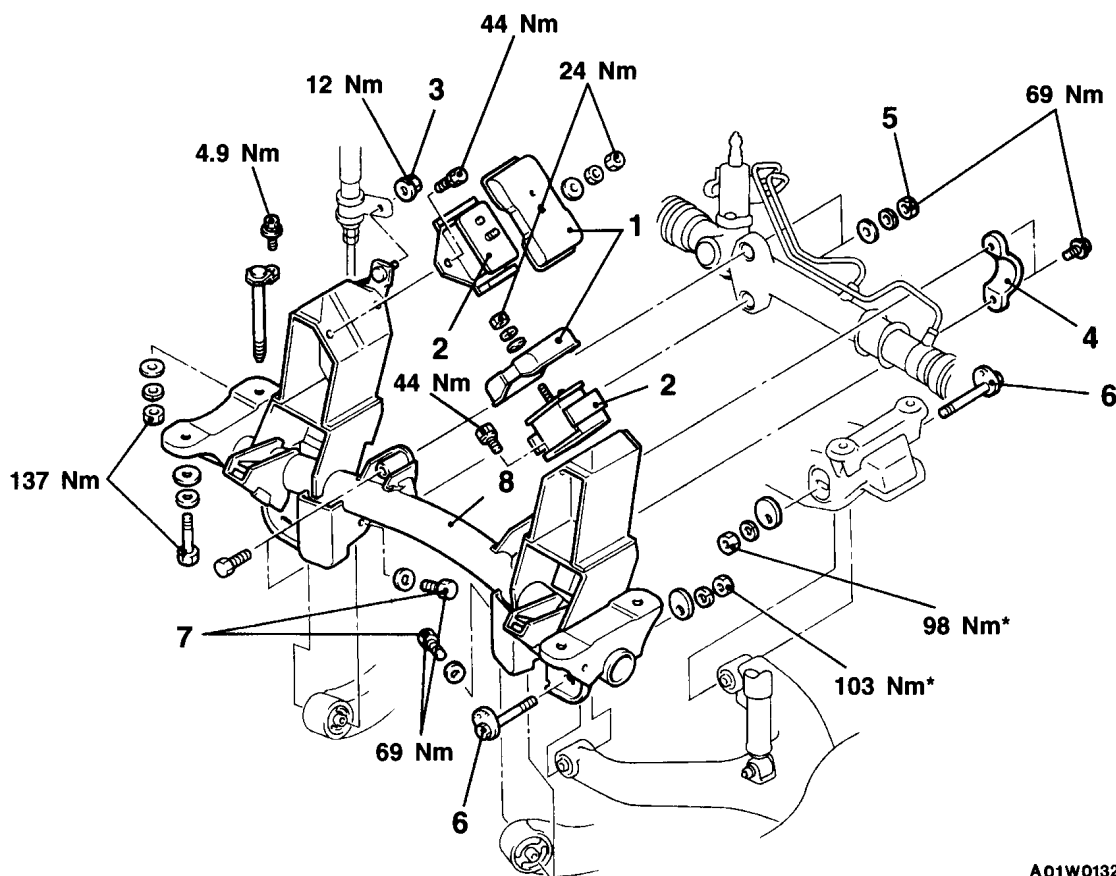
For vehicles with SRS, before removal of steering gear box, refer to GROUP 52B, centre front wheels and remove ignition key. Failure to do so may damage SRS clock spring and render SRS system inoperative, risking serious driver injury.

Pre-removal Operation

- Under Skid Plate, Under Cover Removal (Refer to GROUP 42 – Under Cover.)
- Stabilizer Bar Removal (Refer to GROUP 33A – Stabilizer Bar.)

Post-installation Operation

- Wheel Alignment Inspection and Adjustment (Refer to GROUP 33A – Service Adjustment Procedures.)
- Stabilizer Bar Installation (Refer to GROUP 33A – Stabilizer Bar.)
- Under Skid Plate, Under Cover Installation (Refer to GROUP 42 – Under Cover.)

**Removal steps**

- Engine assembly (Refer to GROUP 11 – Engine assembly.)
- 1. Insulator cover
- 2. Engine support front insulator
- 3. Power steering pressure hose installation nut <4G6>
- 4. Clamp
- 5. Power steering gear and linkage installation nut

- 6. Lower arm bolt assembly (for camber, caster adjustment)
- 7. Front differential mount installation nut
- 8. Engine support crossmember assembly

Caution

* : Indicates parts which should be temporarily tightened, and then fully tightened with the vehicle on the ground in the unladen condition.

REAR ENGINE MOUNT

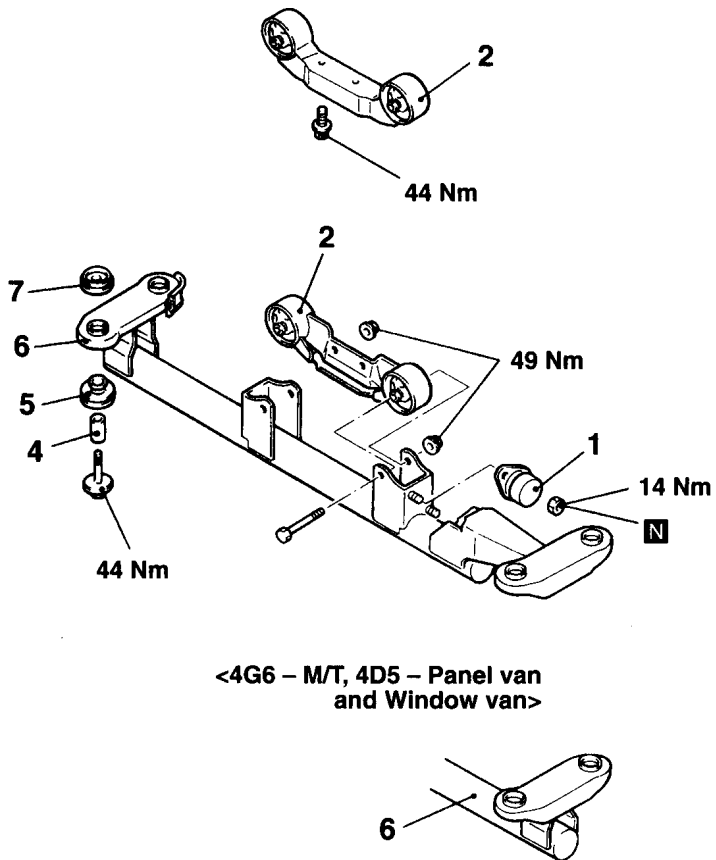
REMOVAL AND INSTALLATION

<2WD>

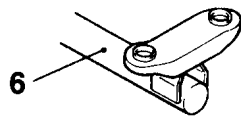
<4D5 – Wagon>

<4WD>

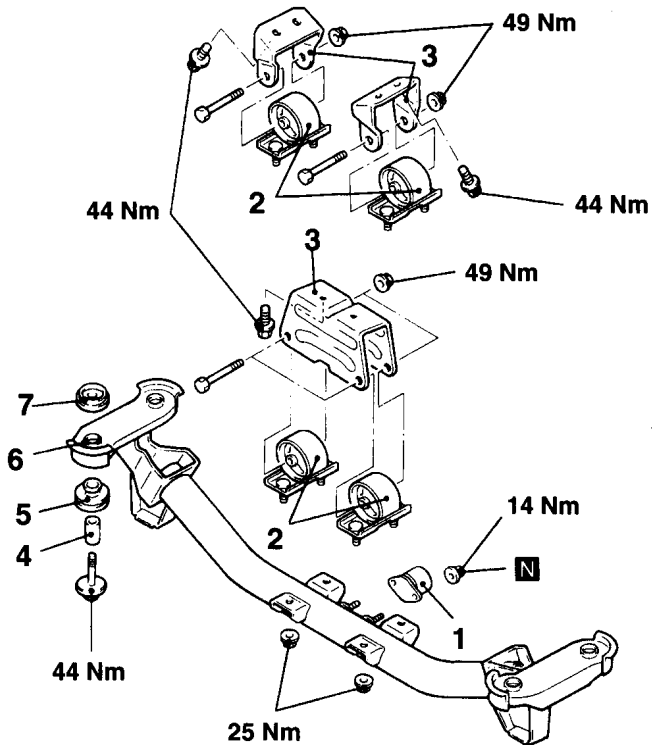
<4D5 – Wagon>



<4G6 – M/T, 4D5 – Panel van and Window van>



01W0020



01W0135

00002261

Removal steps

1. Dynamic damper
<Vehicles with dynamic damper>
- Support the transmission by a transmission jack.
2. Transmission mount insulator assembly
3. Transmission mount bracket
4. Collar
5. Lower bushing
6. Transmission mount crossmember assembly
7. Upper bushing

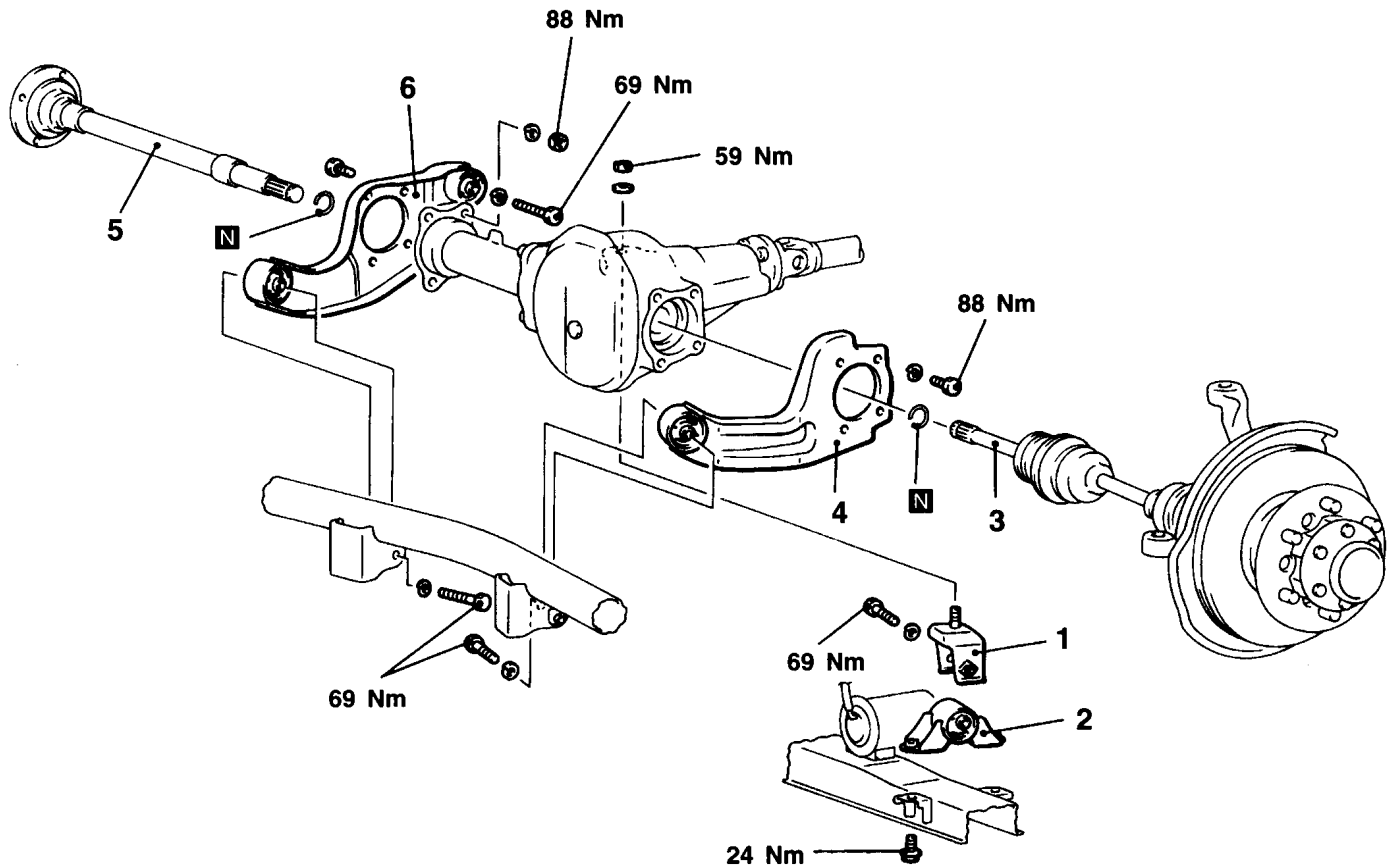
FRONT DIFFERENTIAL MOUNT

120000094

REMOVAL AND INSTALLATION

Pre-removal and Post-installation Operation

- Under Skid Plate, Under Cover Removal and Installation (Refer to GROUP 42 – Under Cover.)



A01W0018

Differential mount insulator removal steps

- Support the front differential by a transmission jack.
1. Differential support bracket
 2. Differential mount insulator assembly

Differential mount bracket assembly (L.H.) removal steps

- 3. Drive shaft (L.H.) (Refer to GROUP 26 – Drive Shaft.)
 - Support the front differential by a transmission jack.
4. Differential mount bracket assembly (L.H.)

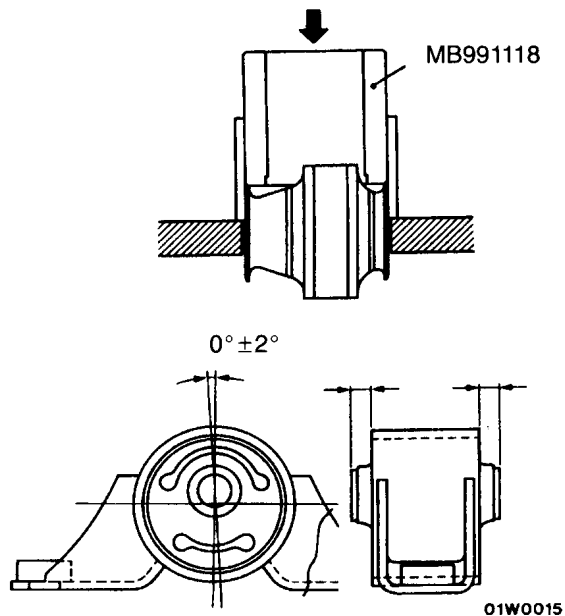
Differential mount bracket assembly (R.H.) removal steps

- 5. Inner shaft (Refer to GROUP 26 – Inner shaft.)
 - Support the front differential by a transmission jack.
6. Differential mount bracket assembly (R.H.)

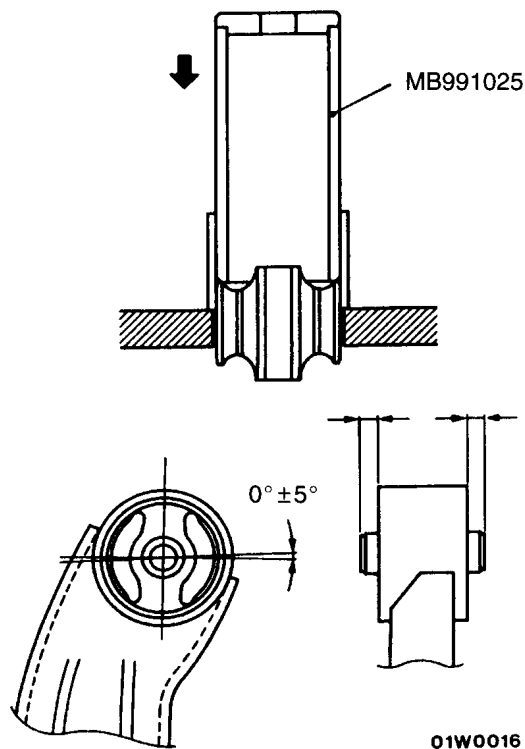
FRONT DIFFERENTIAL MOUNT INSULATOR REPLACEMENT

- (1) Use the special tool and a press to take out and press-fit the insulators.
- (2) Install the insulators so that they face in the same directions and protrude by the same amounts as shown in the illustrations.

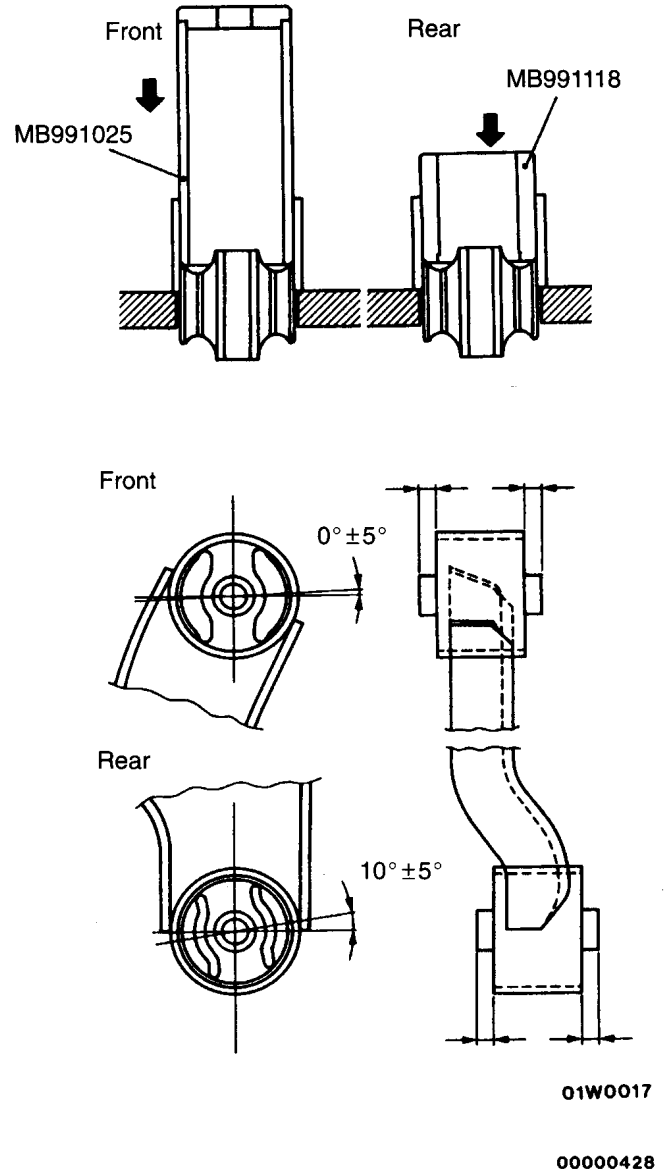
Differential mount insulator assembly



Differential mount bracket assembly (L.H.)



Differential mount bracket assembly (R.H.)



SUSPENSION CROSSMEMBER ASSEMBLY <2WD>

120000095

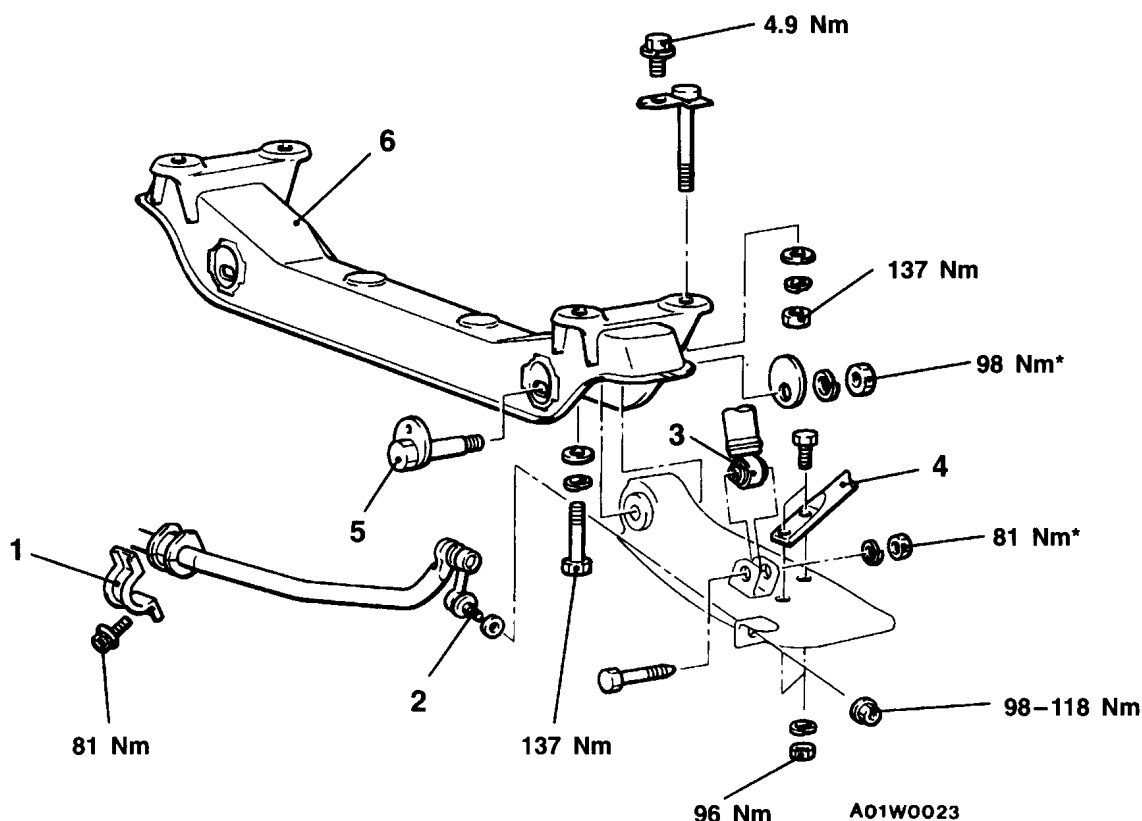
REMOVAL AND INSTALLATION

Pre-removal Operation

- Under Cover Panel Removal (Refer to GROUP 42 – Under Cover.)

Post-installation Operation

- Wheel Alignment Inspection and Adjustment (Refer to GROUP 33A – Service Adjustment Procedures.)
- Under Cover Panel (Refer to GROUP 42 – Under Cover.)

**Removal steps**

1. Clamp
2. Stabilizer link connection
3. Shock absorber lower connection
4. Strut bar front connection
5. Lower arm bolt assembly (for camber adjustment)
6. Suspension crossmember assembly

Caution

* : Indicates parts which should be temporarily tightened, and then fully tightened with the vehicle on the ground in the unladen condition.

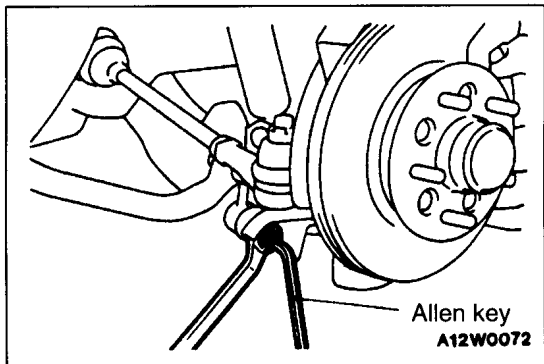
INSTALLATION SERVICE POINTS**►A◄ SHOCK ABSORBER LOWER INSTALLATION**

Insert the bolt from the front of the vehicle.

NOTE

If the bolt is inserted from the rear of the vehicle, it may touch the lower arm.

32-10 POWER PLANT MOUNT – Suspension Crossmember Assembly <2WD>



►B◄ STABILIZER LINK INSTALLATION

Use an allen key to tighten the nut while making sure that the stud on the stabilizer link does not turn as well.

SUSPENSION CROSSMEMBER ASSEMBLY <4WD>

120000096

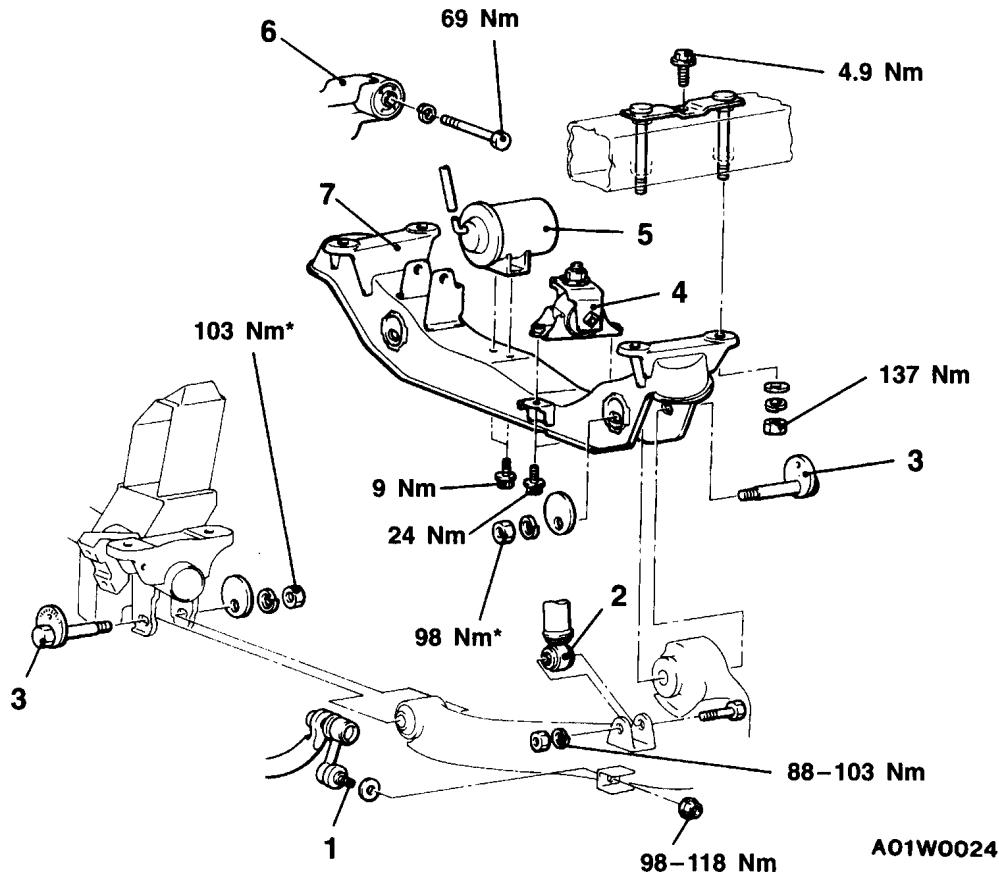
REMOVAL AND INSTALLATION

Pre-removal Operation

- Under Skid Plate, Under Cover Removal (Refer to GROUP 42 – Under Cover.)

Post-installation Operation

- Wheel Alignment Inspection and Adjustment (Refer to GROUP 33A – Service Adjustment Procedures.)
- Under Skid Plate, Under Cover Removal (Refer to GROUP 42 – Under Cover.)

**Removal steps**

1. Stabilizer link connection
2. Shock absorber lower connection
3. Lower arm bolt assembly (for camber, caster adjustment)
4. Differential mount insulator assembly connection
5. Vacuum tank

6. Differential mount bracket (R.H.) connection
7. Suspension crossmember assembly

Caution

* : Indicates parts which should be temporarily tightened, and then fully tightened with the vehicle on the ground in the unladen condition.

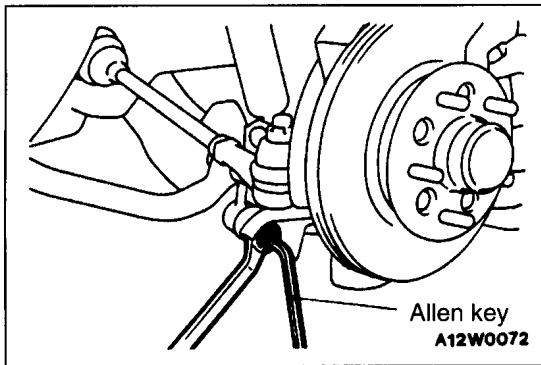
INSTALLATION SERVICE POINTS**►A◄ SHOCK ABSORBER LOWER INSTALLATION**

Insert the bolt from the rear of the vehicle.

NOTE

If the bolt is inserted from the front of the vehicle, it will become difficult to get to the nut to tighten it.

32-12 POWER PLANT MOUNT – Suspension Crossmember Assembly <4WD>



◀B▶ STABILIZER LINK INSTALLATION

Use an allen key to tighten the nut while making sure that the stud on the stabilizer link does not turn as well.