
GROUP 5

SYNTHETIC-RESIN PARTS

CONTENTS

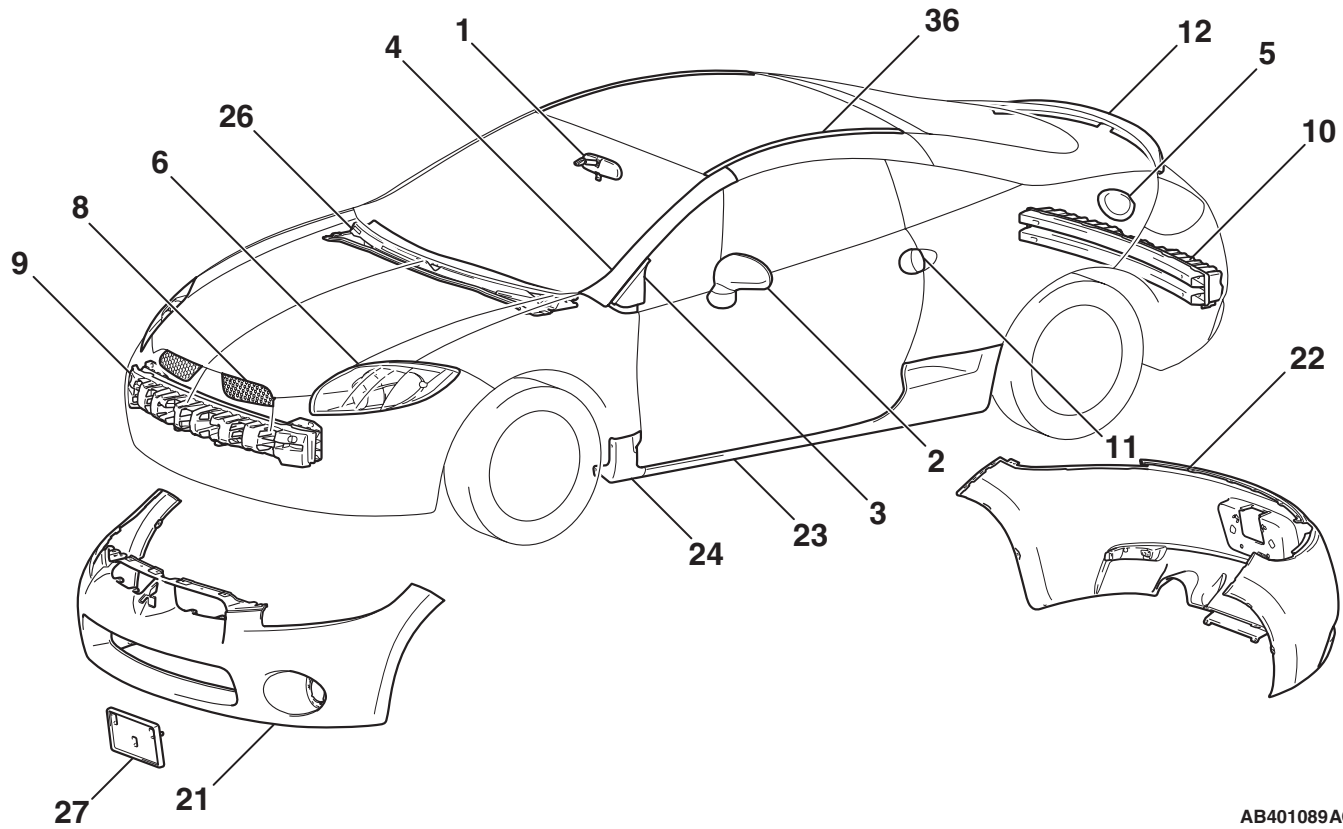
LOCATION OF SYNTHETIC-RESIN PARTS	5-2
--	------------

LOCATION OF SYNTHETIC-RESIN PARTS

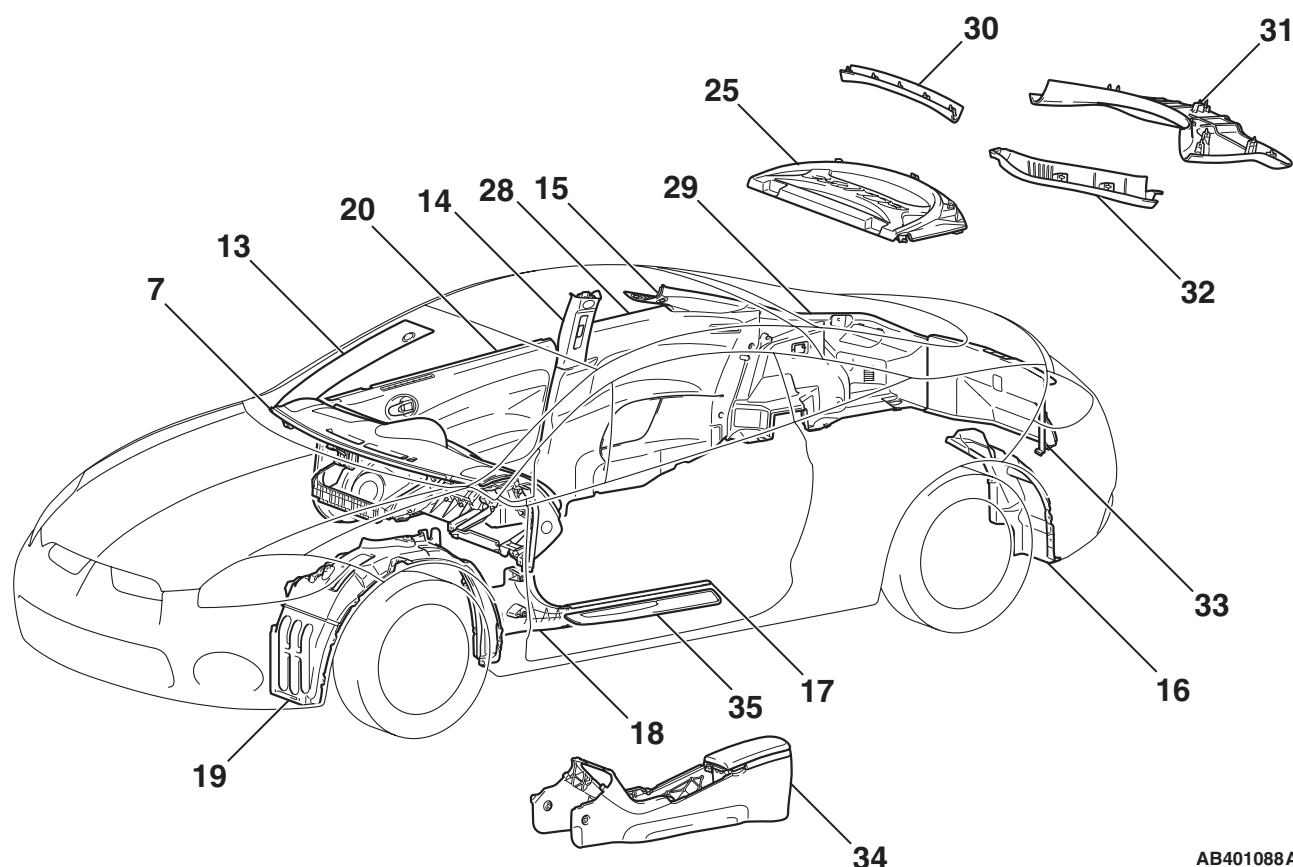
M4050001000731

The location and material of each of the principal synthetic-resin parts are shown below.

<HATCHBACK>



AB401089AC



AB401088AC

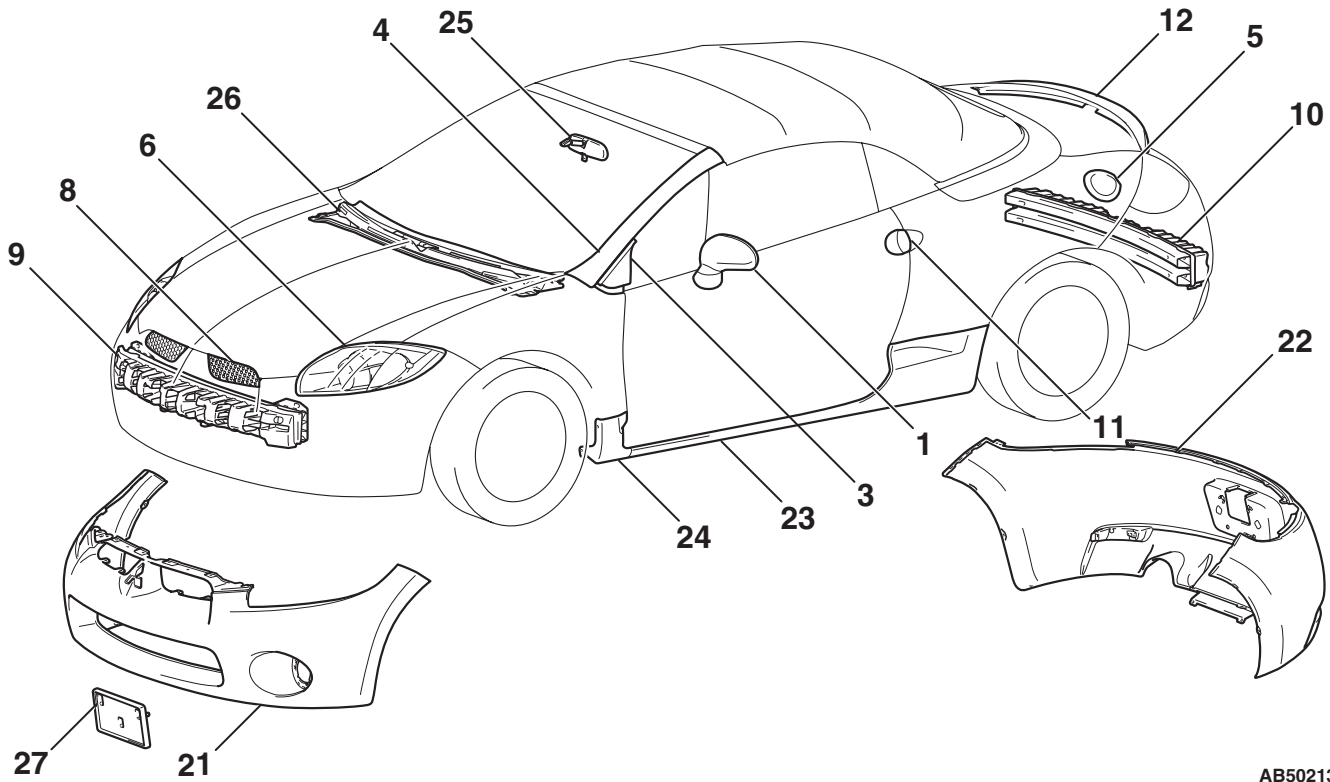
NO.	PART NAME	NAME OF RESIN	ABBREVIATION	HEAT-RESISTANT TEMP [° C (° F)]
1	Inside rear view mirror	Acrylonitrile butadiene styrene	ABS	80 – 110 (176 – 230)
2	Door mirror			
3	Delta garnish outer	Acrylonitrile styrene acrylate	ASA	90 (194)
4	Front pillar garnish	Glass reinforced and mineral filled polyamid 6	PA6- (GF15+MD26)	80 (176)
5	Fuel filler lid	Mineral filled polyamid 6(40%)	PA6- M40	80 (176)
6	Headlight	Polycarbonate	PC	130 – 140 (266 – 284)
7	Instrument panel	Polycarbonate and Acrylonitrile butadiene styrene	PC+ABS	125 – 135 (257 – 275)
8	Radiator grille	Polymer alloy of polycarbonate and acrylonitrile-styrene-acrylate	PC+ASA	100 (212)
9	Front bumper core	Polycarbonate and Polybutylene terephthalate	PC+PBT	140 – 150 (284 – 302)
10	Rear bumper core			
11	Front door outside handle			
12	High-mounted stoplight	Poly(methyl methacrylate)	PMMA	80 (176)

NO.	PART NAME	NAME OF RESIN	ABBREVIATION	HEAT-RESISTANT TEMP [° C (° F)]
13	Front pillar trim	Polypropylene	PP	80 – 120 (176 – 248)
14	Center pillar trim			
15	Rear pillar trim			
16	Rear splash shield			
17	Scuff plate inner			
18	Cowl side trim			
19	Front splash shield			
20	Front door lower trim	Polypropylene, polyvinyl chloride	PP/PVC	80 (176)
21	Front bumper face	Talc filled polypropylene	PP+E/P-TD	80 – 100 (176 – 212)
22	Rear bumper face			
23	Side air dam rear	Talc filled rubber modified polypropylene (20%)	PP+E/P-TD20	110 (230)
24	Side air dam front			
25	Rear shelf trim	Talc filled polypropylene(15%)	PP-TD15	110 (230)
26	Front deck garnish	Talc filled polypropylene (20%)	PP-TD20	120 – 130 (248 – 266)
27	Front license plate garnish			
28	Quarter lower trim			
29	Rear side trim			
30	Liftgate trim upper center			
31	Liftgate trim lower			
32	Liftgate trim upper side			
33	Rear end trim			
34	Floor console			
35	Scuff plate outer	Talc filled polypropylene (26%)	PP-TD26	90 (194)
36	Drip molding	Polyvinyl chloride	PVC	70 – 90 (158 – 194)

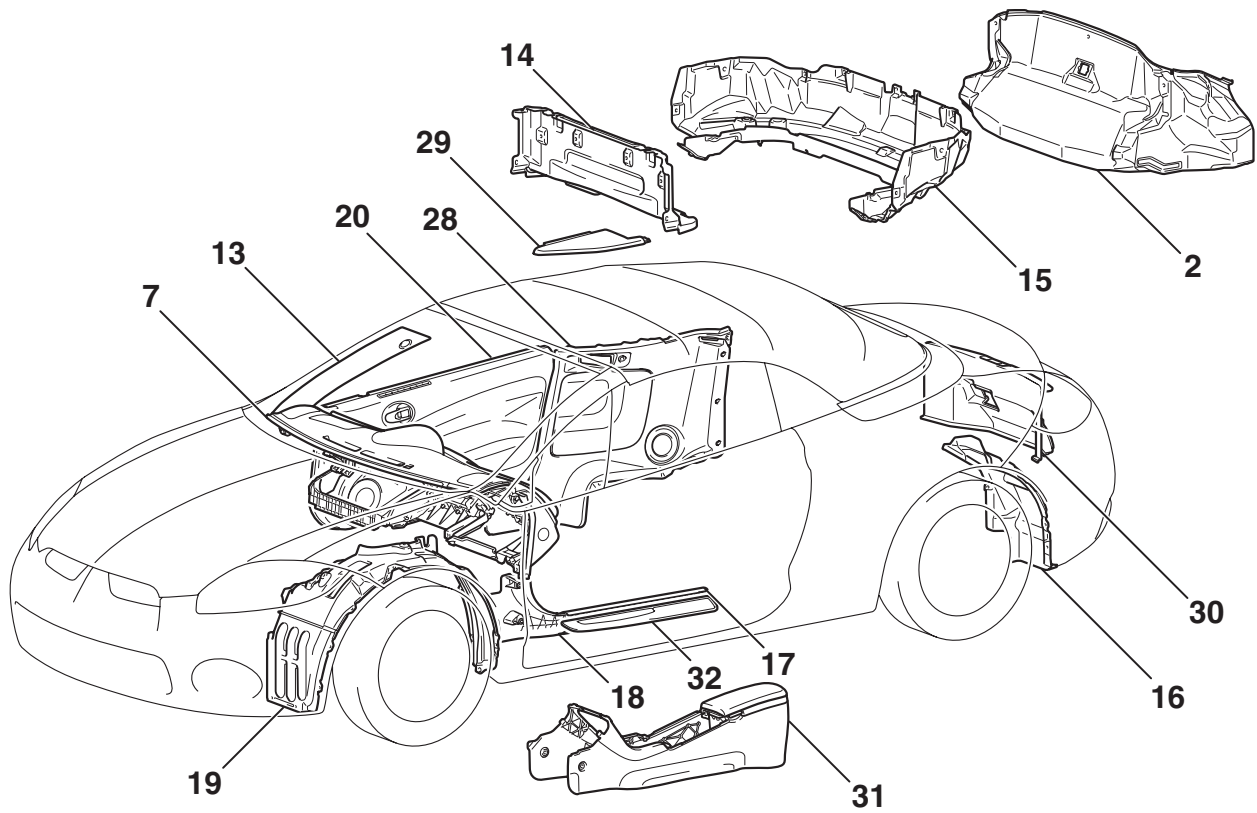
NOTE:

- If the material symbols designated by the ISO differ from the old symbols, both are given, with the old symboling enclosed in brackets.
ISO: International Standardization Organization.
- A slash (/) in the material symbol indicates that two different materials make two-layer construction. A plus sign (+) indicates that the two different materials mix each other.
- The indicated heat-resistant temperature for parts which are composed of two or more types of material is the value for the material with the lowest heat-resistant temperature.
- The material symbols for synthetic-resin parts are embossed on the parts in hidden places.

<CONVERTIBLE>



AB502136AB



AB502137AB

SYNTHETIC-RESIN PARTS
LOCATION OF SYNTHETIC-RESIN PARTS

NO.	PART NAME	NAME OF RESIN	ABBREVIATION	HEAT-RESISTANT TEMP [° C (° F)]
1	Door mirror	Acrylonitrile butadiene styrene	ABS	80 – 110 (176 – 230)
2	Trunk room trim			
3	Delta garnish outer	Acrylonitrile styrene acrylate	ASA	90 (194)
4	Front pillar garnish	Glass reinforced and mineral filled polyamid 6	PA6- (GF15+MD26)	80 (176)
5	Fuel filler lid	Mineral filled polyamid 6(40%)	PA6- M40	80 (176)
6	Headlight	Polycarbonate	PC	130 – 140 (266 – 284)
7	Instrument panel	Polycarbonate and Acrylonitrile butadiene styrene	PC+ABS	125 – 135 (257 – 275)
8	Radiator grille	Polymer alloy of polycarbonate and acrylonitrile-styrene-acrylate	PC+ASA	100 (212)
9	Front bumper core	Polycarbonate and Polybutylene terephthalate	PC+PBT	140 – 150 (284 – 302)
10	Rear bumper core			
11	Front door outside handle			
12	High-mounted stoplight	Poly(methyl methacrylate)	PMMA	80 (176)
13	Front pillar trim	Polypropylene	PP	80 – 120 (176 – 248)
14	Tonneau latch cover			
15	Drain trough			
16	Rear splash shield			
17	Scuff plate inner			
18	Cowl side trim			
19	Front splash shield			
20	Front door lower trim	Polypropylene, polyvinyl chloride	PP/PVC	80 (176)
21	Front bumper face	Talc filled polypropylene	PP+E/P-TD	80 – 100 (176 – 212)
22	Rear bumper face			
23	Side air dam rear	Talc filled rubber modified polypropylene (20%)	PP+E/P-TD20	110 (230)
24	Side air dam front			
25	Inside rear view mirror	Talc filled polypropylene	PP-TD	110 – 140 (230 – 284)
26	Front deck garnish	Talc filled polypropylene (20%)	PP-TD20	120 – 130 (248 – 266)
27	Front license plate garnish			
28	Quarter lower trim			
29	Quarter upper trim			
30	Rear end trim			
31	Floor console			
32	Scuff plate outer	Talc filled polypropylene (26%)	PP-TD26	90 (194)

NOTE:

- *If the material symbols designated by the ISO differ from the old symbols, both are given, with the old symboling enclosed in brackets.*
ISO: International Standardization Organization.
- *A slash (/) in the material symbol indicates that two different materials make two-layer construction. A plus sign (+) indicates that the two different materials mix each other.*
- *The indicated heat-resistant temperature for parts which are composed of two or more types of material is the value for the material with the lowest heat-resistant temperature.*
- *The material symbols for synthetic-resin parts are embossed on the parts in hidden places.*

NOTES