

GROUP 21C

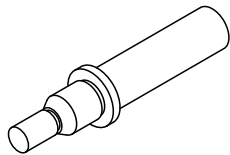
CLUTCH
OVERHAUL
<F6MBA>

CONTENTS

SPECIAL TOOLS.....	21C-2	SPECIFICATIONS	21C-5
CLUTCH.....	21C-2	FASTENER TIGHTENING SPECIFICATIONS.....	21C-5
REMOVAL AND INSTALLATION	21C-2	GENERAL SPECIFICATIONS	21C-5
CLUTCH INSPECTION.....	21C-4	SERVICE SPECIFICATIONS	21C-5
		LUBRICANTS	21C-5

SPECIAL TOOLS

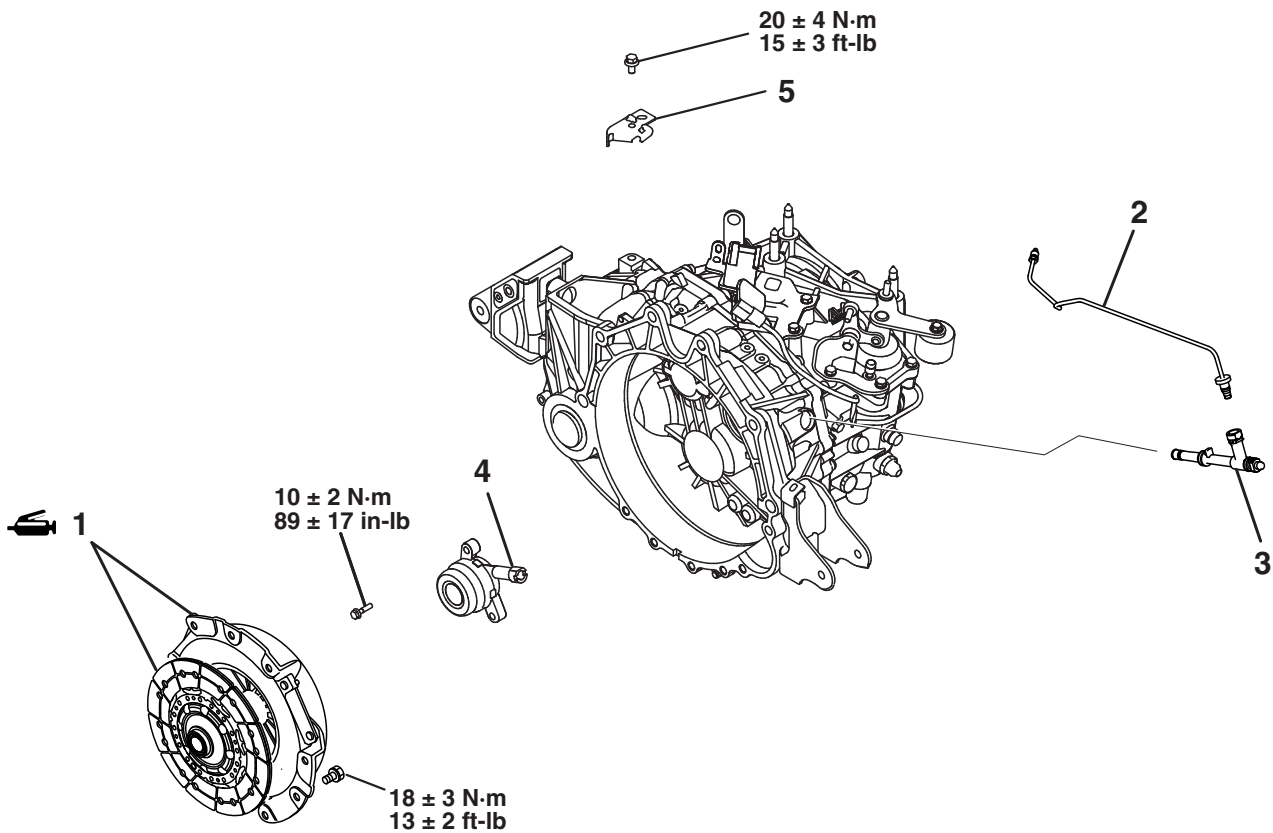
M1212000600049

TOOL	TOOL NUMBER AND NAME	SUPERSESSSION	APPLICATION
	MB992059 Clutch disc center guide	–	Aligning clutch disc center hole

CLUTCH

REMOVAL AND INSTALLATION

M1212001000501



AK605045AB

- REMOVAL STEPS**
- >>B<< 1. CLUTCH SET
2. CLUTCH TUBE ASSEMBLY
>>A<< 3. CONCENTRIC SLAVE CYLINDER ADAPTER

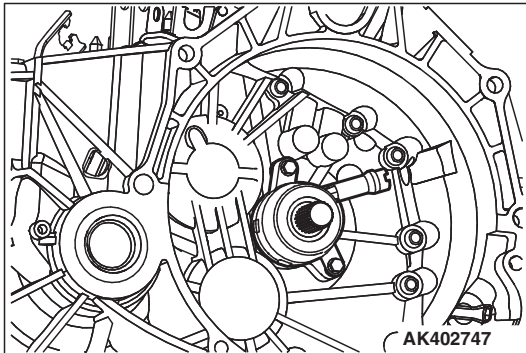
- REMOVAL STEPS (Continued)**
- >>A<< 4. CONCENTRIC SLAVE CYLINDER
5. CLUTCH FLUID LINE BRACKET

Required Special Tool:

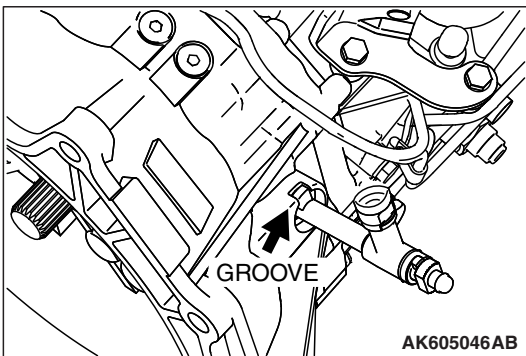
- MB992059: Clutch disc center guide

INSTALLATION SERVICE POINTS

>>A<< CONCENTRIC SLAVE CYLINDER/CONCENTRIC SLAVE CYLINDER ADAPTER INSTALLATION



1. After setting the concentric slave cylinder to the transaxle case, tighten the flange bolt temporarily.



2. Combine the concentric slave cylinder adapter with the concentric slave cylinder.

NOTE: Fix to the groove of the transaxle case certainly.

3. Tighten the flange bolt to the specified torque.

Tightening torque: 10 ± 2 N·m (89 ± 17 in-lb)

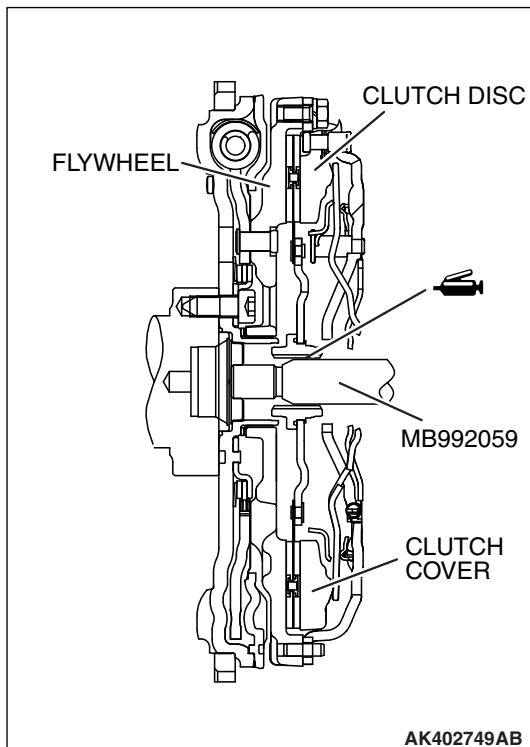
>>B<< CLUTCH SET INSTALLATION

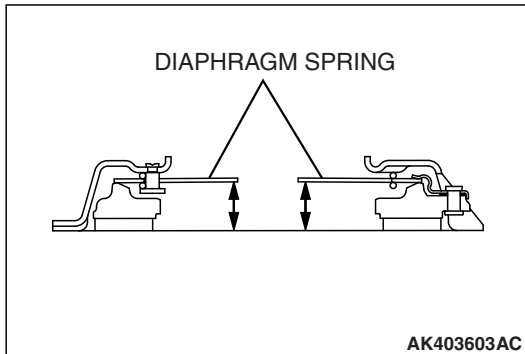
1. Apply Mitsubishi grease to the clutch disc splines and rub it in the splines with a brush.

Specified grease:

Mitsubishi Part No. 0101011 or equivalent

2. Using special tool MB992059 to position the clutch disc on the flywheel.
3. Install the clutch cover onto the flywheel.



CLUTCH INSPECTION**CLUTCH COVER**

1. Check the diaphragm spring end for wear and uneven height. Replace if wear is evident or height difference exceeds the limit.
Limit: 1.0 mm (0.040 inch)
2. Check the pressure plate surface for wear, cracks and discoloration.
3. Check the rivets of the strap plate for looseness. If loose, replace the clutch set.

CLUTCH DISC**⚠ CAUTION**

Don't clean the clutch disc in a cleaning solvent.

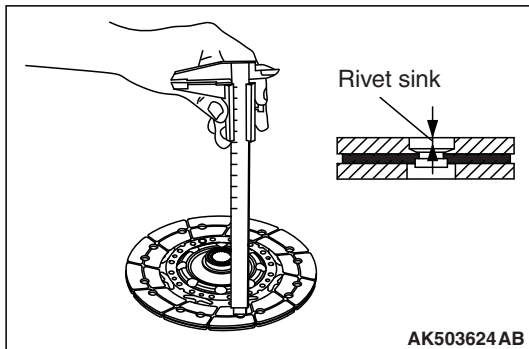
1. Check the facing for loose rivets, uneven contact, evidence of seizure, or deposited oils and greases. If defective, replace the clutch set.

NOTE: If contaminated with grease or oil, determine the source of the contaminant and repair it.

2. Measure the rivet sink. Replace the clutch disc if it is below the limit.

Minimum limit: 0.3 mm (0.012 inch)

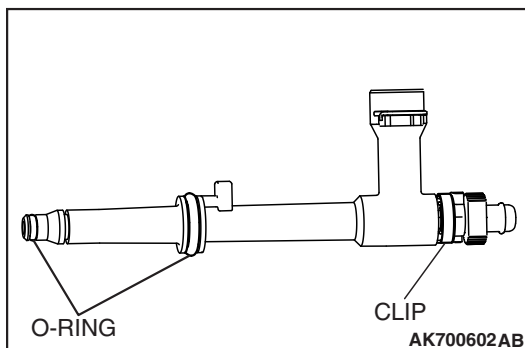
3. Place the clutch disc on the input shaft and check for sliding condition and play in the rotating direction. If poor sliding condition is evident, clean, reassemble, and recheck. If excessive play is evident, replace the clutch disc and/or input shaft.

**CONCENTRIC SLAVE CYLINDER ADAPTER**

1. Check the O-ring for damage and deformation. If the O-ring is damage or deformed, replace the concentric slave cylinder adapter.
2. Check the surface that touches the concentric slave cylinder for contamination. If contaminated, clean the surface the specified clutch fluid.

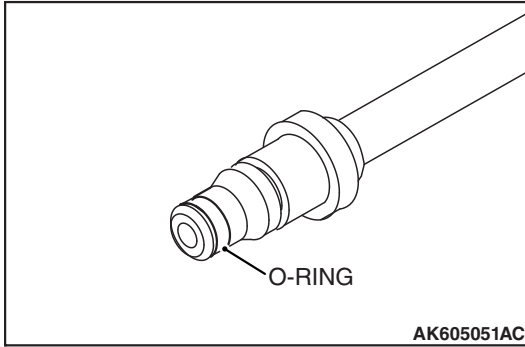
Specified fluid: Brake Fluid DOT 3 or DOT 4

3. make sure there are not deformed and/or missing clips.



CLUTCH TUBE ASSEMBLY

1. Check the O-ring for damage and deformation. If the O-ring is damage or deformed, replace the clutch tube assembly.
2. Check the surface that touches the concentric slave cylinder adapter for contamination. If contaminated, clean the surface the specified clutch fluid.

Specified fluid: Brake Fluid DOT 3 or DOT 4

SPECIFICATIONS

FASTENER TIGHTENING SPECIFICATIONS

M1212001800295

ITEM	SPECIFICATION
Clutch cover mounting bolt	18 ± 3 N·m (13 ± 2 ft-lb)
Concentric slave cylinder mounting bolt	10 ± 2 N·m (89 ± 17 in-lb)
Clutch fluid line bracket mounting bolt	20 ± 4 N·m (15 ± 3 ft-lb)

GENERAL SPECIFICATIONS

M1212000200397

ITEM	SPECIFICATION
Clutch operating method	Hydraulic type
Clutch disc type	Single dry disc type
Clutch disc size OD x ID mm (in)	240 x 155 (9.45 x 6.10)
Clutch cover type	Diaphragm spring type
Clutch cover setting load N (lb)	9,700 ± 900 (2,181 ± 202)

SERVICE SPECIFICATIONS

M1212000300350

ITEM	LIMIT
Diaphragm spring end height difference mm (in)	1.0 (0.040)
Clutch disc facing rivet sink mm (in)	Minimum 0.3 (0.012)

LUBRICANTS

M1212000400409

ITEM	SPECIFIED LUBRICANT
Clutch fluid	Brake Fluid DOT 3 or DOT 4
Clutch disc splines	Mitsubishi Part number 0101011 or equivalent

NOTES