

GROUP 1

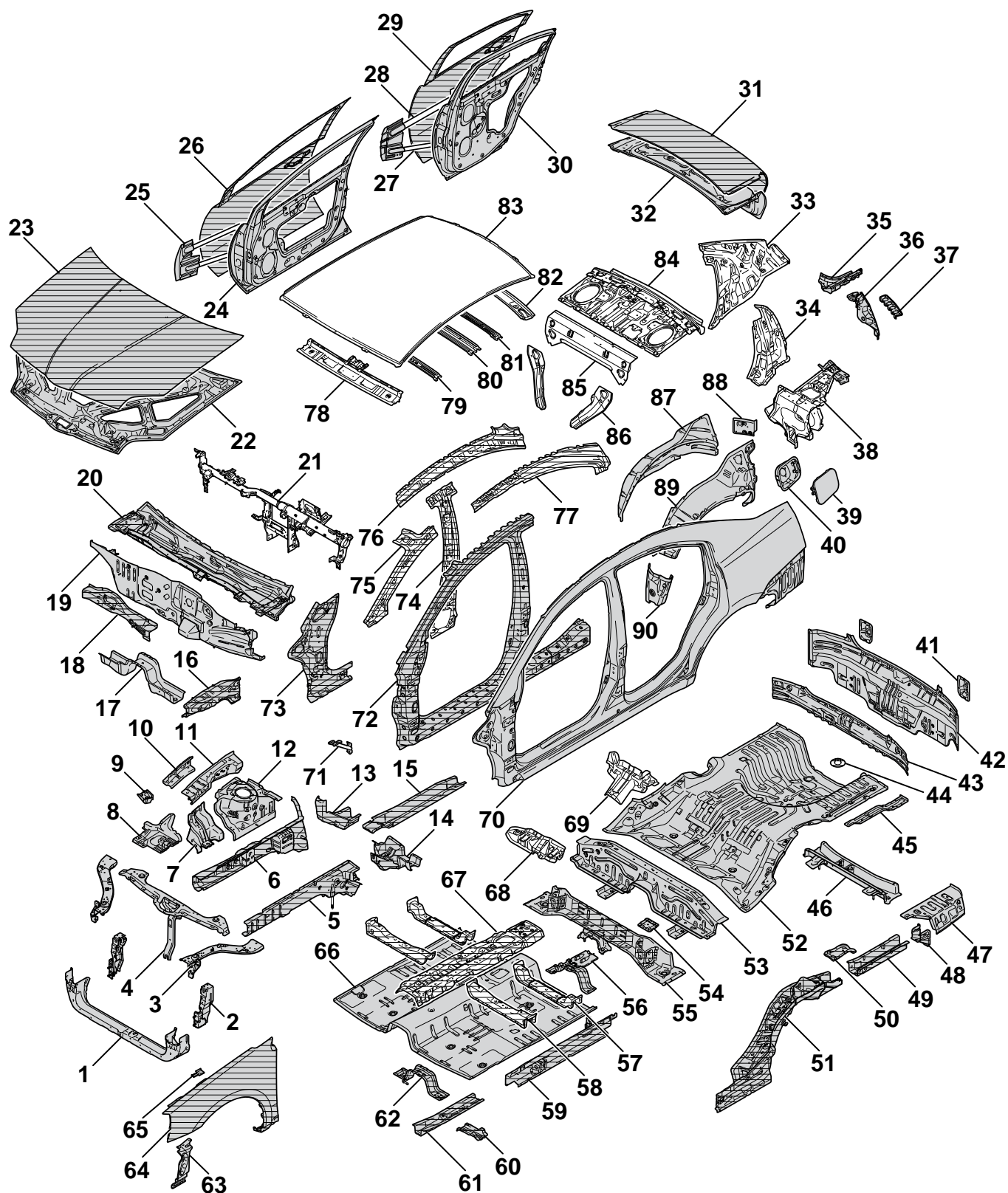
# BODY CONSTRUCTION

CONTENTS

BODY COMPONENTS.....	1-2	UNDER BODY.....	1-21
		DOOR .....	1-24
BODY MAIN CROSS-SECTIONAL VIEWS .....	1-4	SILENCER APPLICATION LOCATIONS .....	1-25
MAINTENANCE, SERVICEABILITY .	1-6	FOAMING MATERIAL USAGE LOCATIONS .....	1-26
BODY CONSTRUCTION CHARACTERISTICS .....	1-8	STIFFENER AND DUMP SHEET APPLICATION LOCATIONS .....	1-28
FRONT BODY.....	1-8		
SIDE BODY.....	1-16	THEFT PROTECTION .....	1-28
REAR BODY.....	1-19		
ROOF .....	1-20		

## BODY COMPONENTS

M4010001000157



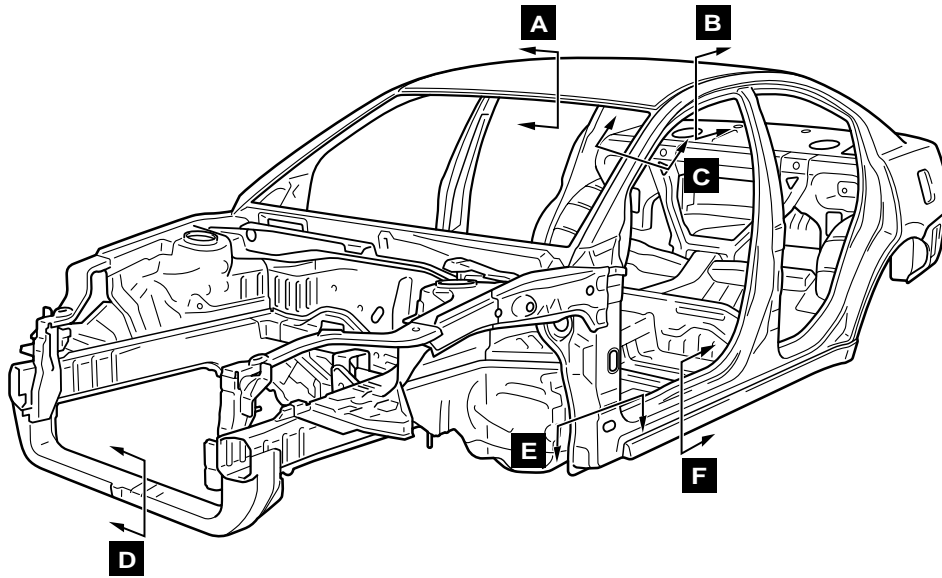
■ : ANTI-CORROSION STEEL PANELS  
 ▨ : HIGH-TENSILE STEEL PANELS

AB300972AC

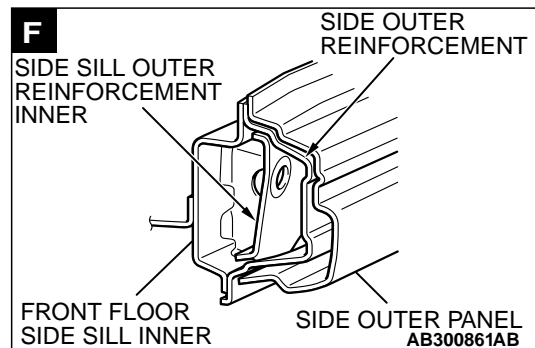
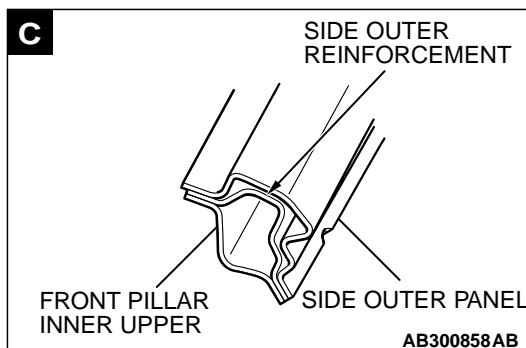
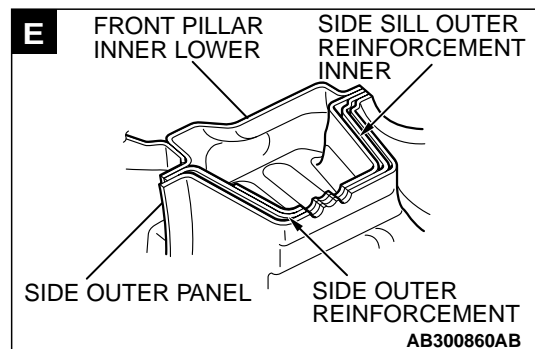
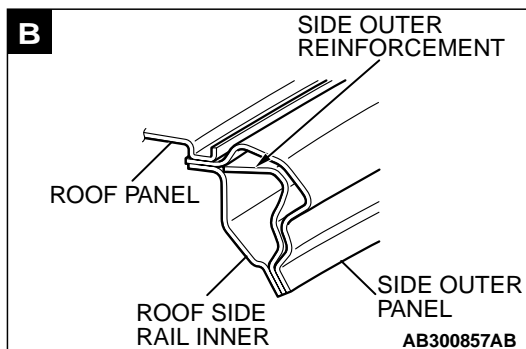
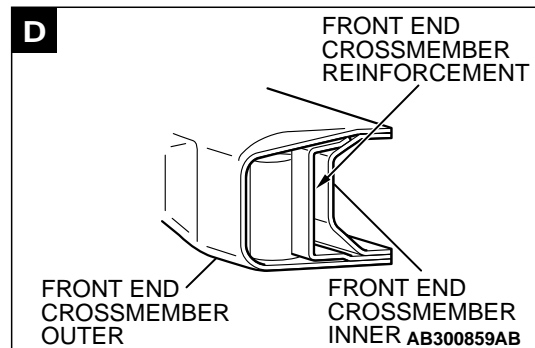
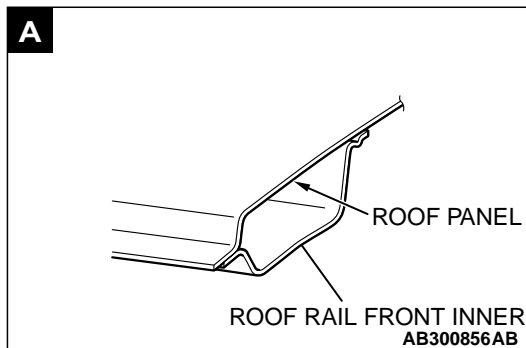
- |  |  |
|--|--|
| 1. FRONT END CROSSMEMBER                 | 48. REAR FLOOR SIDEMEMBER GUSSET           |
| 2. HEADLIGHT SUPPORT PANEL LOWER         | 49. REAR FLOOR SIDEMEMBER EXTENSION        |
| 3. HEADLIGHT SUPPORT PANEL UPPER         | 50. REAR FLOOR SIDEMEMBER REINFORCEMENT    |
| 4. FRONT END UPPER BAR                   | 51. REAR FLOOR SIDEMEMBER                  |
| 5. FRONT SIDEMEMBER INNER                | 52. REAR FLOOR PAN                         |
| 6. FRONT SIDEMEMBER OUTER                | 53. REAR FLOOR CROSSMEMBER FRONT REAR SEAT |
| 7. FRONT FENDER SHIELD                   | 54. SEAT BELT REAR FLOOR REINFORCEMENT     |
| 8. SHIELD PLATE                          | 55. REAR FLOOR CROSSMEMBER REAR REAR SEAT  |
| 9. UPPER FRAME REINFORCEMENT             | 56. FRONT FLOOR CROSSMEMBER REAR BACKBONE  |
| 10. FRONT UPPER FRAME OUTER              | 57. FRONT FLOOR CROSSMEMBER REAR           |
| 11. FRONT UPPER FRAME INNER              | 58. FRONT FLOOR CROSSMEMBER FRONT          |
| 12. SPRING HOUSE PANEL                   | 59. FRONT FLOOR SIDE SILL INNER            |
| 13. FRONT SIDEMEMBER REAR A              | 60. FRONT FLOOR LOWER REINFORCEMENT        |
| 14. FRONT SIDEMEMBER BRACE               | 61. FRONT FLOOR SIDEMEMBER                 |
| 15. REAR B SIDEMEMBER                    | 62. FRONT FLOOR CROSSMEMBER FRONT BACKBONE |
| 16. UPPER FRAME                          | 63. FRONT FENDER REINFORCEMENT             |
| 17. DASH PANEL CROSSMEMBER LOWER         | 64. FRONT FENDER                           |
| 18. DASH PANEL CROSSMEMBER UPPER         | 65. HOOD DAMPER BRACKET                    |
| 19. DASH PANEL                           | 66. FRONT FLOOR PAN                        |
| 20. COWL TOP PANEL                       | 67. BACKBONE REINFORCEMENT                 |
| 21. FRONT DECK CROSSMEMBER               | 68. CHILD ANCHOR BRACKET                   |
| 22. HOOD INNER PANEL                     | 69. REAR SEATBACK PLATE EXTENSION          |
| 23. HOOD OUTER PANEL                     | 70. SIDE OUTER PANEL                       |
| 24. FRONT DOOR INNER PANEL               | 71. FRONT PILLAR TO UPPER FRAME BRACE      |
| 25. FRONT DOOR SIDE DOOR BEAM            | 72. SIDE OUTER REINFORCEMENT               |
| 26. FRONT DOOR OUTER PANEL               | 73. FRONT PILLAR INNER LOWER               |
| 27. REAR DOOR SIDE DOOR BEAM LOWER       | 74. CENTER PILLAR INNER                    |
| 28. REAR DOOR SIDE DOOR BEAM UPPER       | 75. FRONT PILLAR INNER UPPER               |
| 29. REAR DOOR OUTER PANEL                | 76. ROOF SIDE RAIL INNER                   |
| 30. REAR DOOR INNER PANEL                | 77. SIDE ROOF RAIL REINFORCEMENT REAR      |
| 31. TRUNK LID OUTER PANEL                | 78. ROOF FRONT RAIL                        |
| 32. TRUNK LID INNER PANEL                | 79. ROOF BOW FRONT                         |
| 33. REAR QUARTER INNER PANEL UPPER       | 80. ROOF BOW CENTER                        |
| 34. REAR PILLAR REINFORCEMENT            | 81. ROOF BOW REAR                          |
| 35. REAR QUARTER OUTER PANEL EXTENSION   | 82. ROOF REAR RAIL                         |
| 36. REAR LIGHT HOUSING                   | 83. ROOF PANEL                             |
| 37. REAR BUMPER BRACKET                  | 84. REAR SHELF PANEL                       |
| 38. REAR SEAT BACK BRACE                 | 85. REAR DECK CROSSMEMBER                  |
| 39. FUEL FILLER DOOR                     | 86. REAR SEATBACK PLATE                    |
| 40. FUEL FILLER NECK BRACKET (LEFT SIDE) | 87. REAR WHEEL HOUSE PANEL INNER           |
| 41. REAR BUMPER BRACKET                  | 88. REAR WHEEL HOUSE SHIELD PLATE REAR     |
| 42. REAR END PANEL OUTER                 | 89. REAR QUARTER INNER PANEL LOWER         |
| 43. REAR END PANEL INNER                 | 90. REAR WHEEL HOUSE SHIELD PLATE FRONT    |
| 44. SPARE TIRE BRACKET                   |  |
| 45. SPARE TIRE WELL REINFORCEMENT        |  |
| 46. REAR FLOOR CROSSMEMBER               |  |
| 47. REAR FLOOR SIDE BRACE                |  |

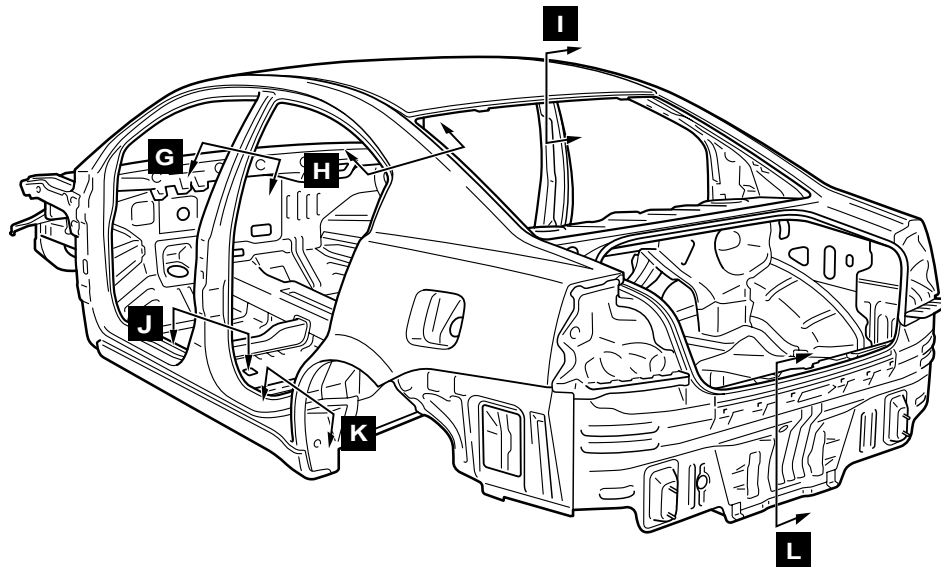
# BODY MAIN CROSS-SECTIONAL VIEWS

M4010002000150

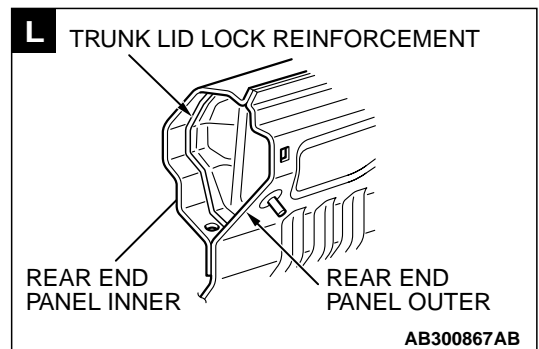
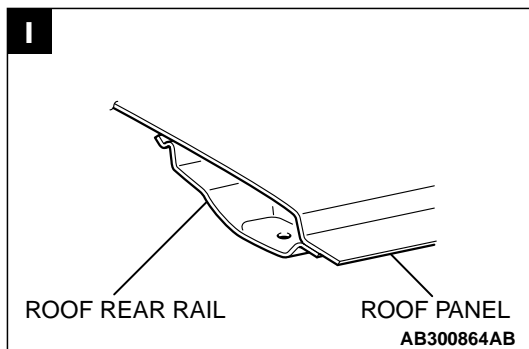
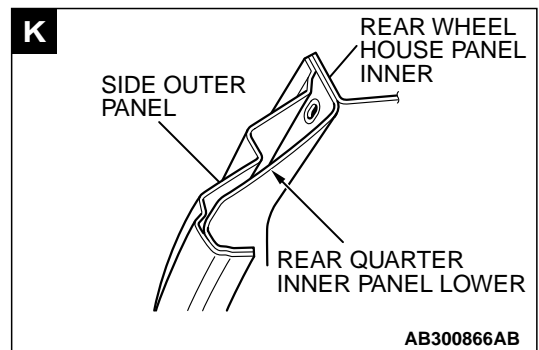
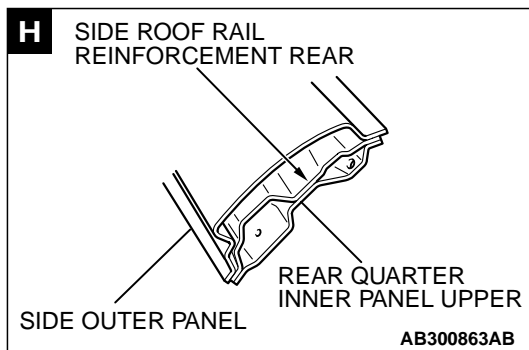
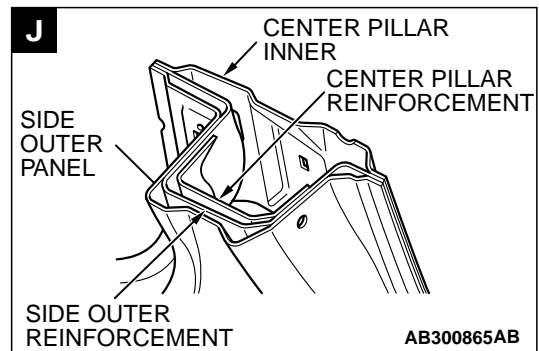
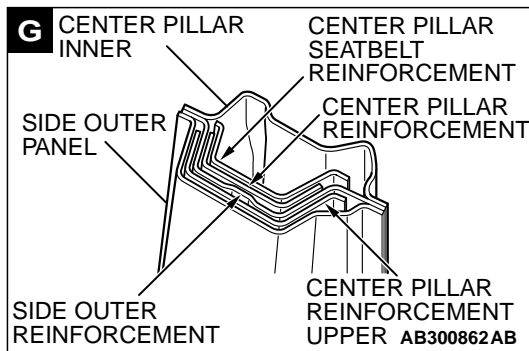


AB300730AB





AB300731AB

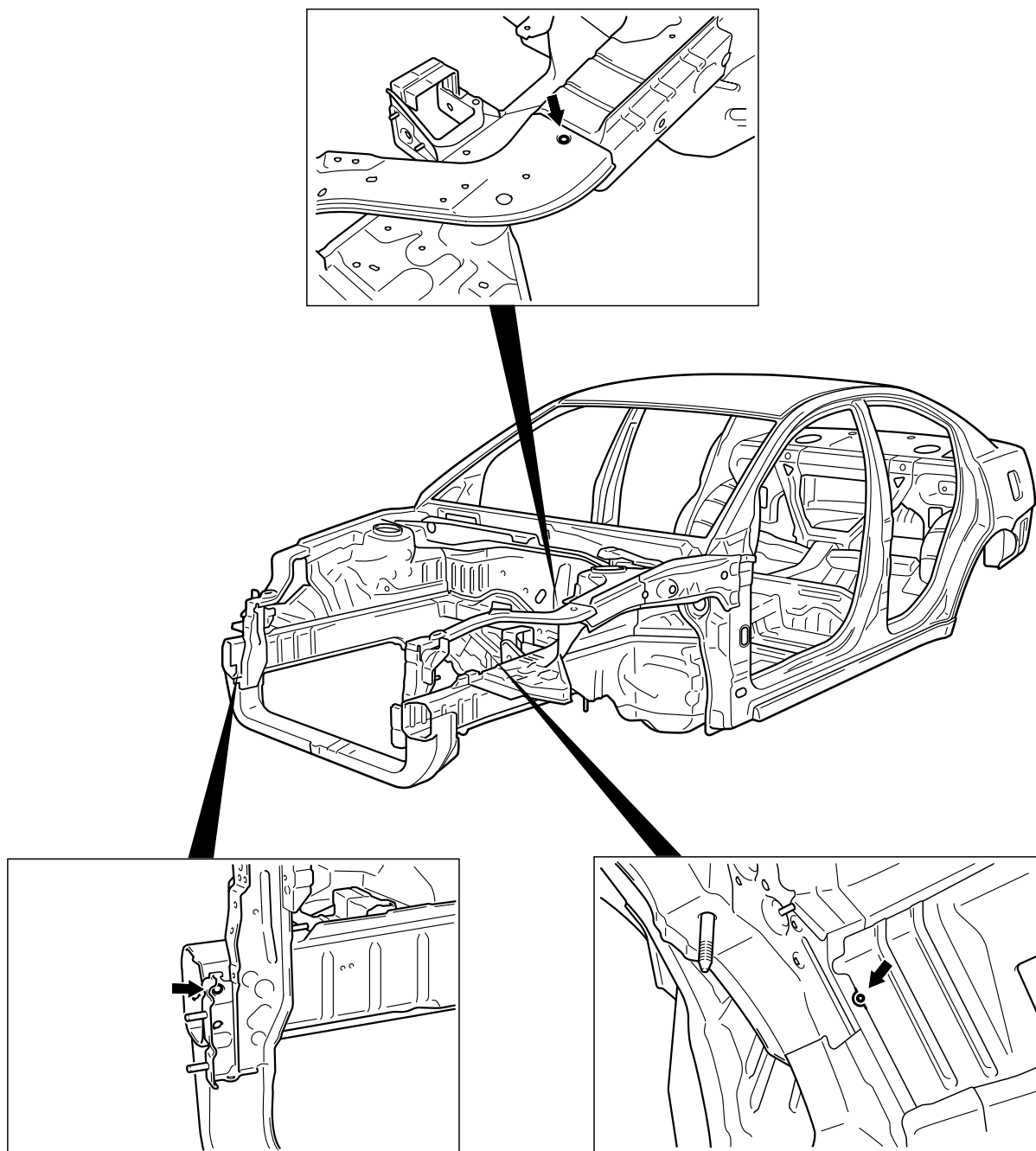


## MAINTENANCE, SERVICEABILITY

M4010003000175

### FENDER SHIELD

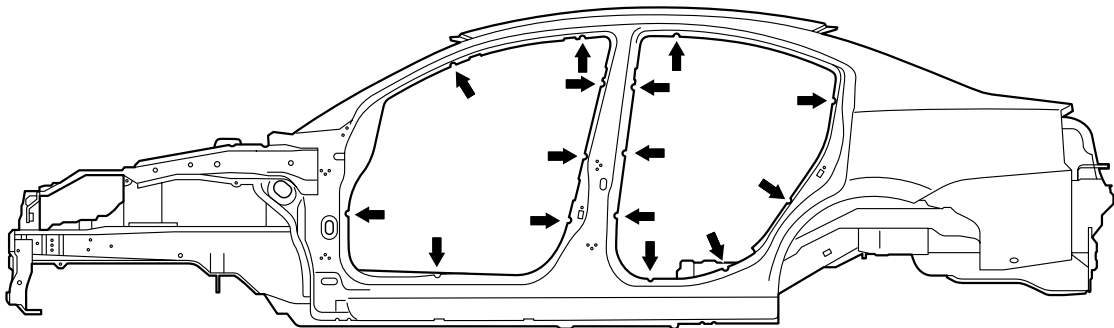
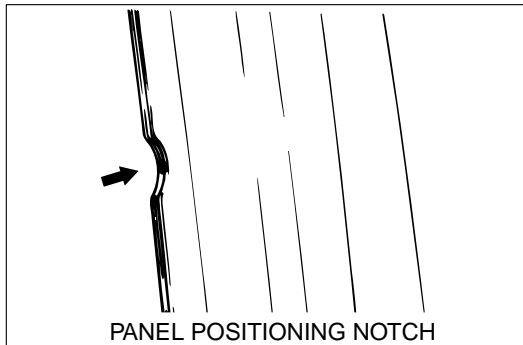
Positioning holes, marks, and notches have been provided at the following overlapped areas to improve operation performance when replacing panels.



AB301246AB

## **SIDE STRUCTURE**

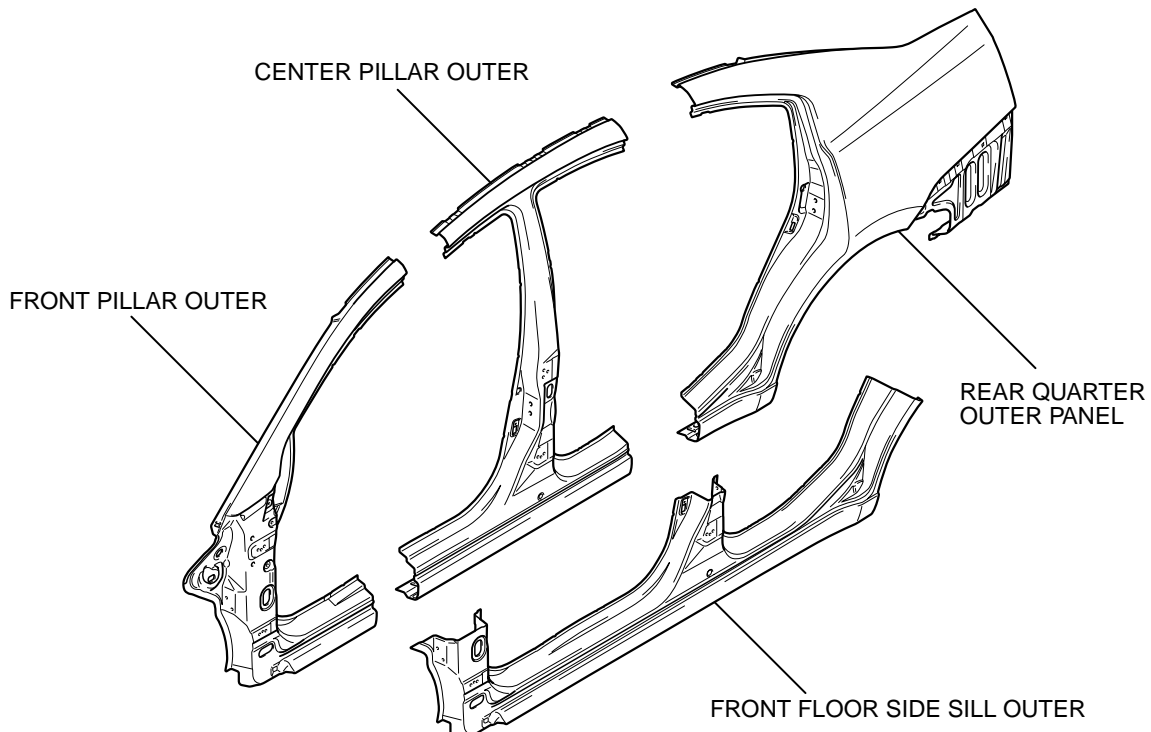
Panel positioning notches have been provided at the door opening section to improve operation performance when replacing panels.



AB301247AB

## **SIDE OUTER PANEL**

Spare parts are provided in the following cut form with the adoption of the pillar integral type side outer panel.



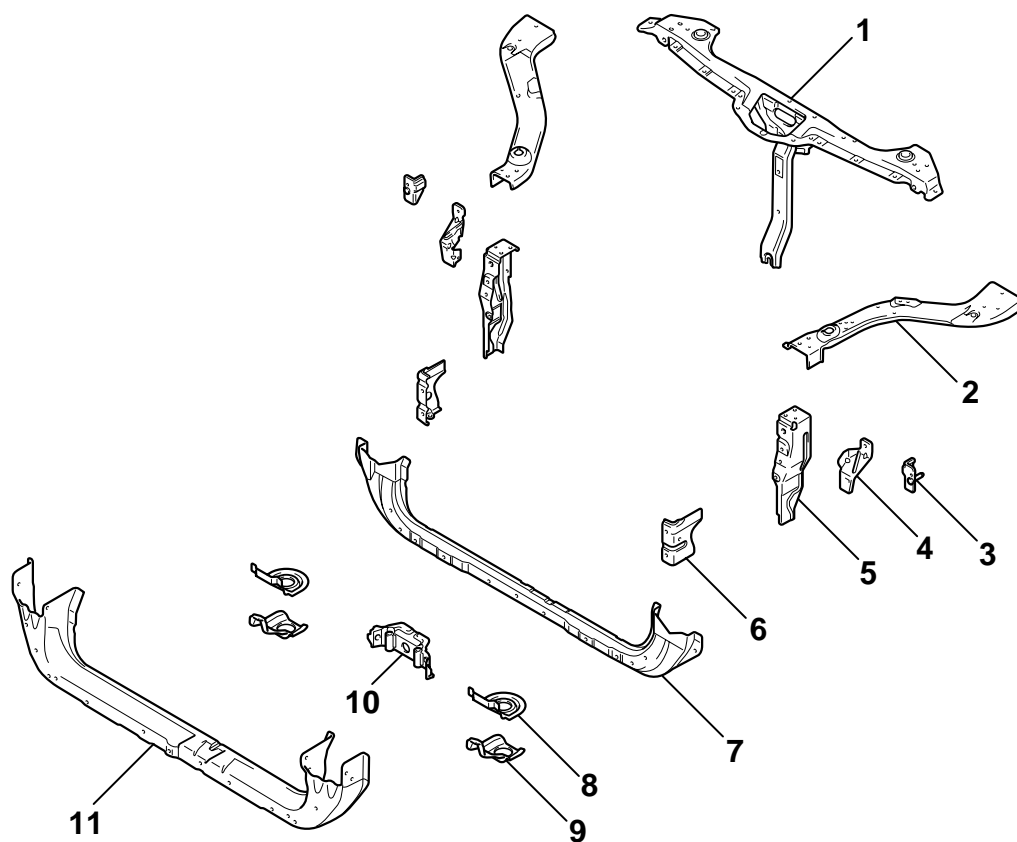
AB301236AB

# BODY CONSTRUCTION CHARACTERISTICS

## FRONT BODY

## HEADLIGHT SUPPORT

M4010010000144



AB300600AB

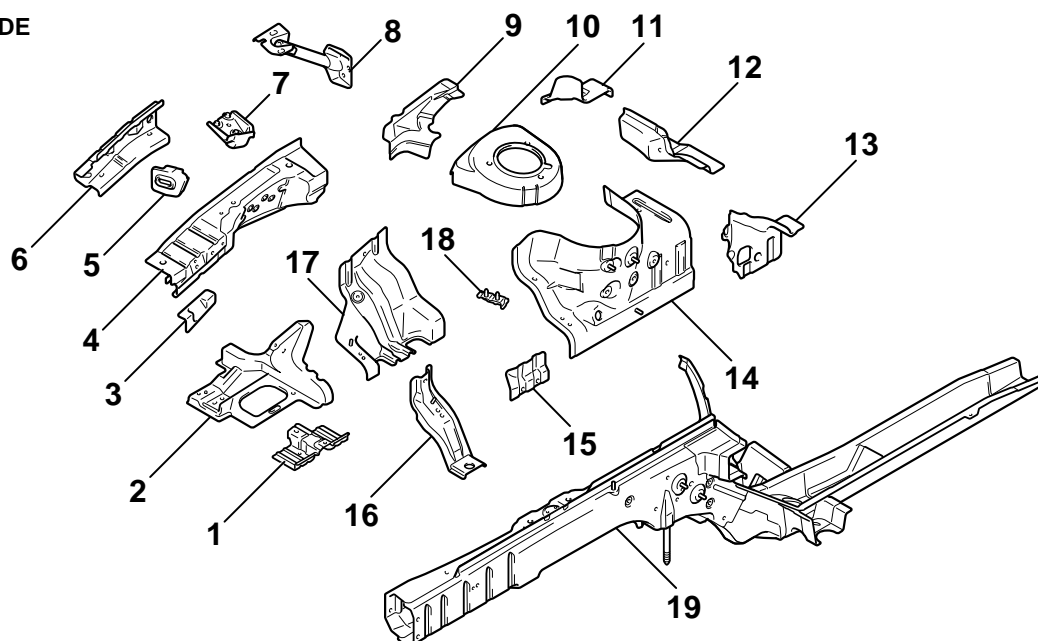
- |                                    |   |
|------------------------------------|---|
| 1. FRONT END UPPER BAR             | 7. FRONT END CROSSMEMBER INNER          |
| 2. FRONT END UPPER BAR SIDE        | 8. RADIATOR LOWER BRACKET B             |
| 3. G SENSOR PROTECTOR BRACKET      | 9. RADIATOR LOWER BRACKET A             |
| 4. HEADLIGHT SUPPORT PANEL         | 10. FRONT END CROSSMEMBER REINFORCEMENT |
| 5. RADIATOR SUPPORT PANEL          | 11. FRONT END CROSSMEMBER OUTER         |
| 6. FRONT BUMPER REINFORCEMENT STAY |   |



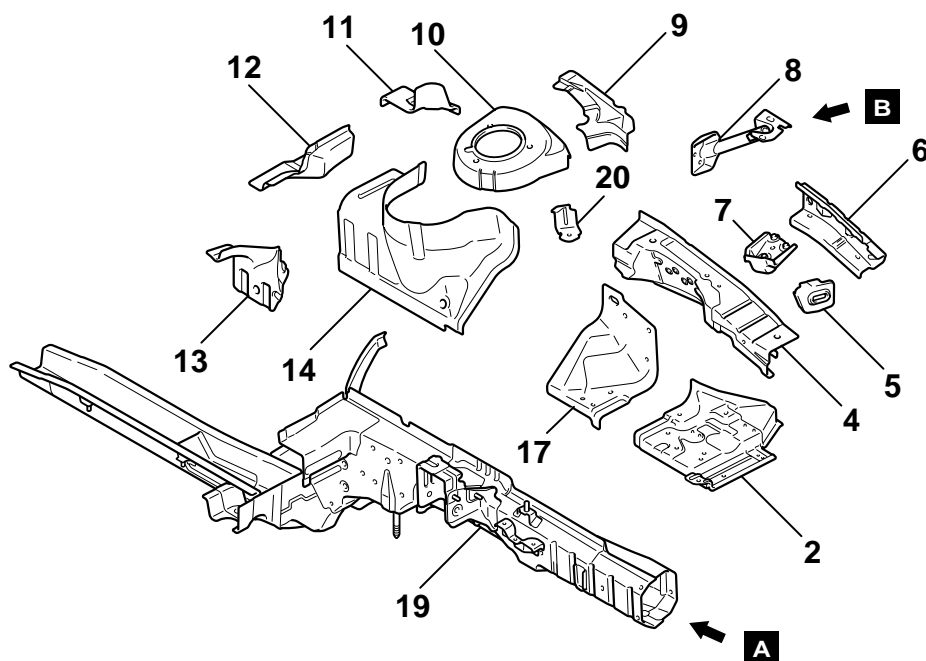
NOTES

### FENDER SHIELD

RIGHT SIDE

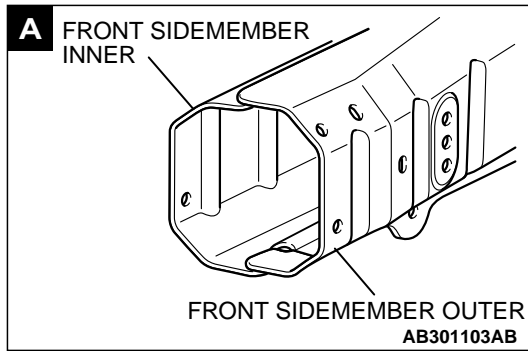


LEFT SIDE

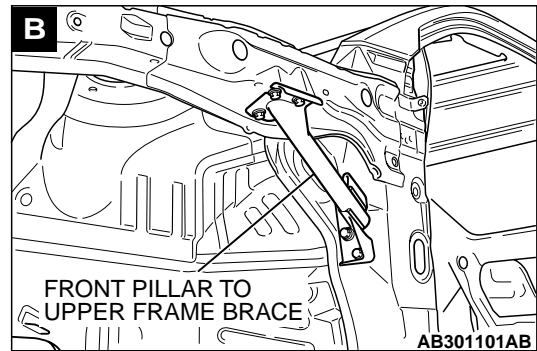


AB301332AB

- |                                      |   |
|--------------------------------------|---|
| 1. WASHER TANK BRACKET               | 12. SPRING HOUSE GUSSET                   |
| 2. SHIELD PLATE                      | 13. SPRING HOUSE BRACE INNER              |
| 3. FRONT UPPER FRAME BRACE           | 14. SPRING HOUSE PANEL                    |
| 4. FRONT UPPER FRAME INNER           | 15. SPRING HOUSE PANEL REINFORCEMENT      |
| 5. UPPER FRAME BULKHEAD              | 16. ENGINE MOUNT REINFORCEMENT            |
| 6. FRONT UPPER FRAME OUTER           | 17. FRONT FENDER SHIELD                   |
| 7. UPPER FRAME REINFORCEMENT         | 18. POWER STEERING RESERVOIR TANK BRACKET |
| 8. FRONT PILLAR TO UPPER FRAME BRACE | 19. FRONT SIDEMEMBER                      |
| 9. SPRING HOUSE PANEL UPPER          | 20. RELAY BOX BRACKET                     |
| 10. SPRING HOUSE BRACKET             |   |
| 11. FRONT UPPER FRAME GUSSET         |   |



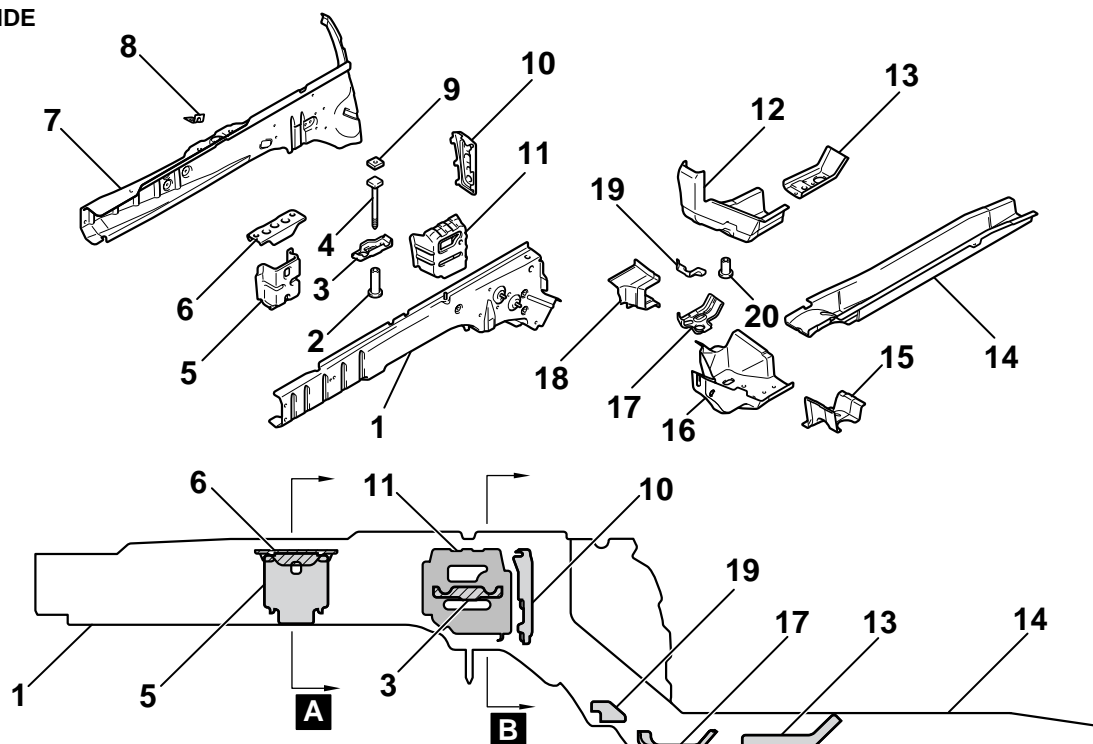
The front side member has been straighter and had eight - square cross sectional structure to efficiently absorb energy upon impact.



The front pillar to upper frame brace has been adopted to heighten the body rigidity of front suspension assembling support area, so that the body torsional rigidity and driving stability have been improved.

## FRONT SIDEMEMBER REINFORCEMENT

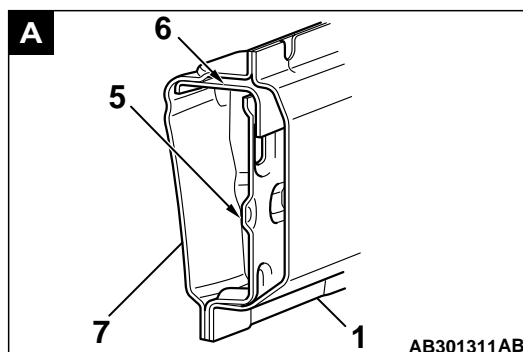
RIGHT SIDE



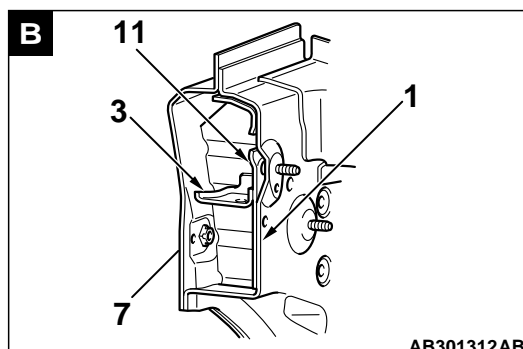
AB301206AB

AB301313AB

1. FRONT SIDEMEMBER INNER
2. PIPE
3. FRONT SUSPENSION SUPPORT BULKHEAD FRONT
4. SQUARE HEAD BOLT
5. FRONT SIDEMEMBER BULKHEAD FRONT
6. ENGINE MOUNT REINFORCEMENT LOWER
7. FRONT SIDEMEMBER OUTER
8. BRAKE HOSE BRACKET
9. RETAINER
10. FRONT SIDEMEMBER BULKHEAD REAR
11. PIPE SUPPORT FRONT
12. FRONT SIDEMEMBER REAR A
13. SIDE STEP A REINFORCEMENT
14. FRONT SIDEMEMBER REAR B
15. DASH CROSSMEMBER EXTENSION LOWER
16. FRONT SIDEMEMBER BRACE LOWER
17. TIE DOWN REINFORCEMENT
18. DASH CROSSMEMBER EXTENSION UPPER
19. PIPE SUPPORT REAR
20. PIPE NUT

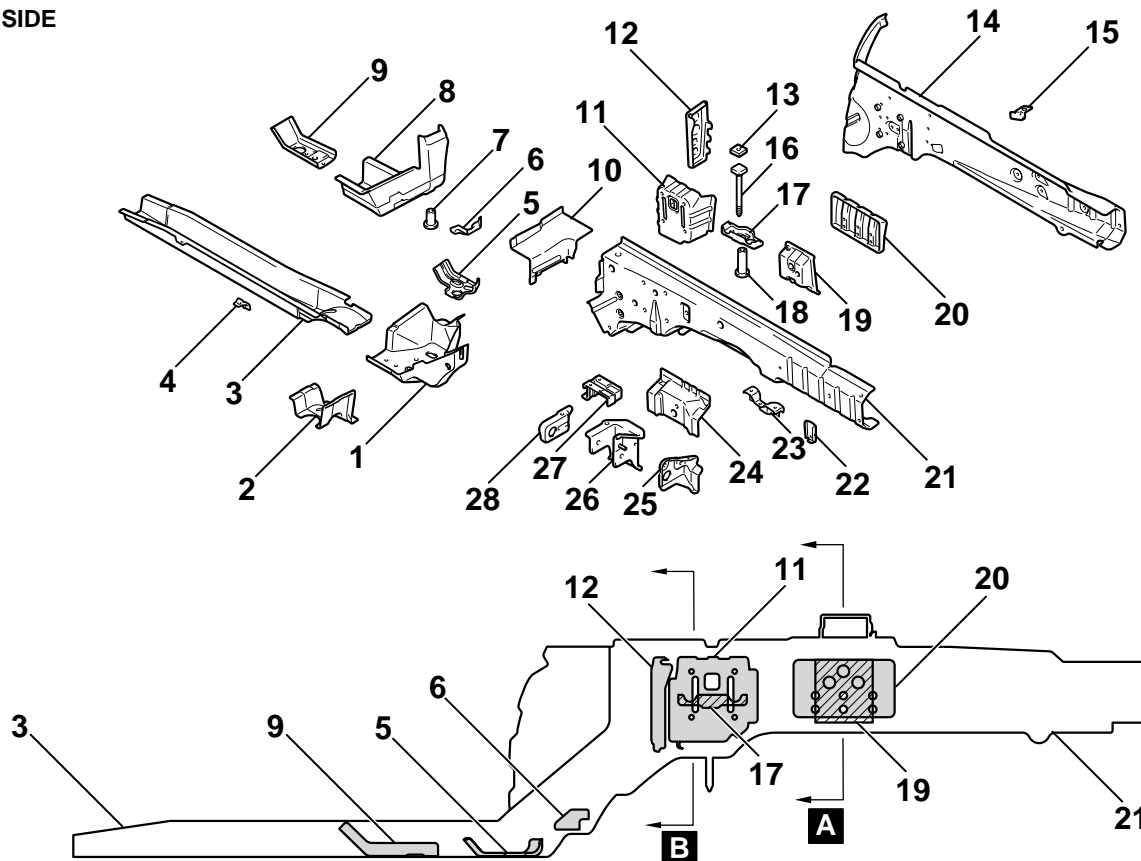


AB301311AB



AB301312AB

**LEFT SIDE**

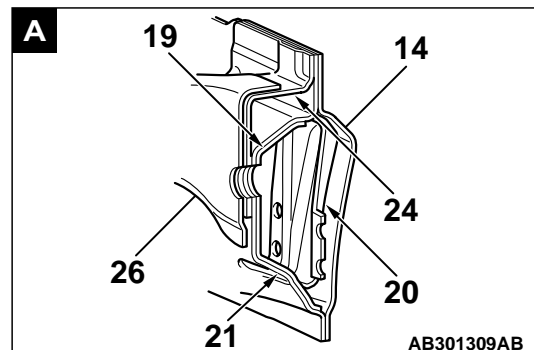


AB301207AB

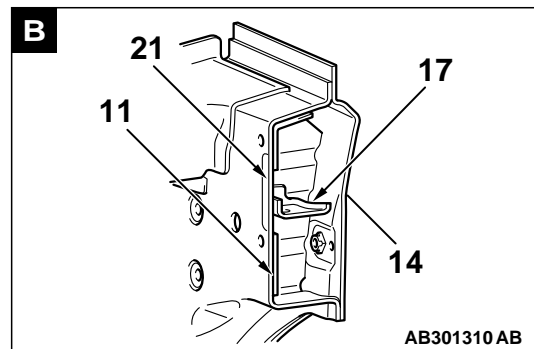
AB301314AB

1. FRONT SIDEMEMBER BRACE LOWER
2. DASH CROSSMEMBER EXTENSION LOWER
3. FRONT SIDEMEMBER REAR B
4. FUEL PIPE BRACKET
5. TIE DOWN REINFORCEMENT
6. PIPE SUPPORT REAR
7. PIPE NUT
8. FRONT SIDEMEMBER REAR A
9. SIDE STEP A REINFORCEMENT
10. DASH CROSSMEMBER EXTENSION UPPER
11. PIPE SUPPORT FRONT
12. FRONT SIDEMEMBER BULKHEAD REAR
13. RETAINER
14. FRONT SIDEMEMBER OUTER
15. BRAKE HOSE BRACKET
16. SQUARE HEAD BOLT
17. FRONT SUSPENSION SUPPORT BULKHEAD FRONT
18. PIPE
19. FRONT SIDEMEMBER INNER BULKHEAD
20. FRONT SIDEMEMBER REINFORCEMENT FRONT OUTER
21. FRONT SIDEMEMBER INNER
22. CONDENSER TANK BRACKET
23. AIR CLEANER BRACKET
24. TRANSAXLE MOUNT GUSSET
25. TRANSAXLE MOUNT SUPPORT FRONT

26. TRANSAXLE MOUNT BRACKET
27. HARNESS PROTECTOR BRACKET
28. TRANSAXLE MOUNT SUPPORT REAR

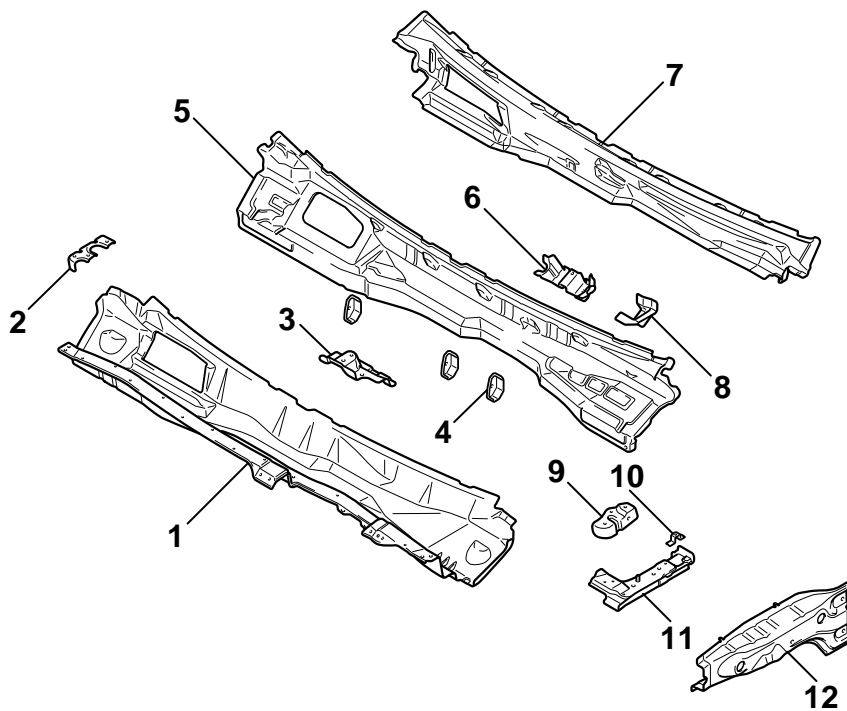


AB301309AB



AB301310AB

## FRONT DECK



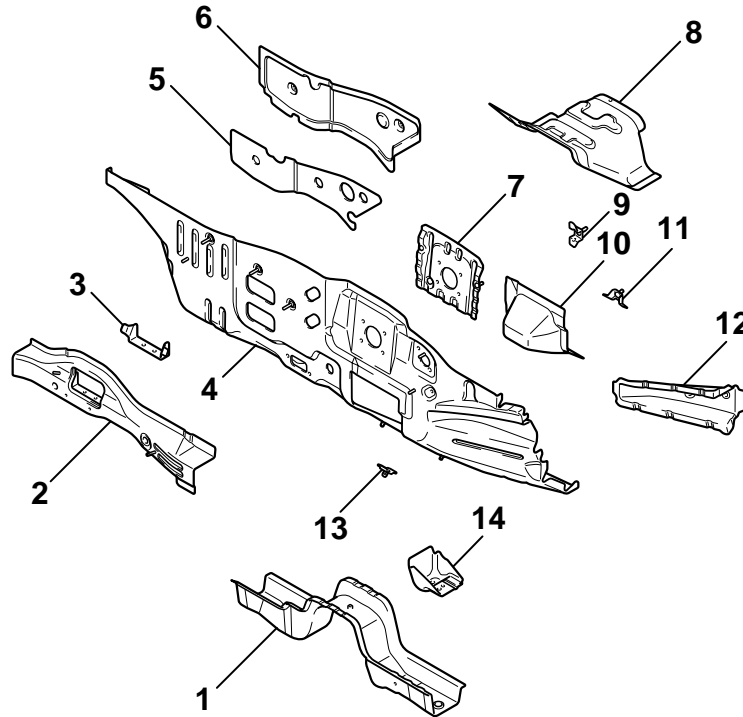
AB301145AB

1. COWL TOP PANEL LOWER
2. WIPER MOTOR BRACKET
3. WIPER BRACKET CENTER
4. COWL TOP INNER BULKHEAD
5. COWL TOP PANEL INNER
6. PEDAL SUPPORT BRACKET

7. COWL TOP PANEL UPPER
8. DECK STAY BRACKET
9. WIPER BRACKET SIDE
10. FENDER BRACKET UPPER
11. FRONT UPPER FRAME EXTENSION INNER
12. UPPER FRAME

## DASH PANEL

- A large dash crossmember and dash brace installed in the chassis is used to disperse energy upon impact efficiently, so that cabin deformation is suppressed.
- Plate thickness of dash panel is increased to suppress cabin deformation and improve sound insulation upon impact.
- A dash panel deadening sheet has been used for the dash panel to suppress noise and vibration from the engine.



AB301146AB

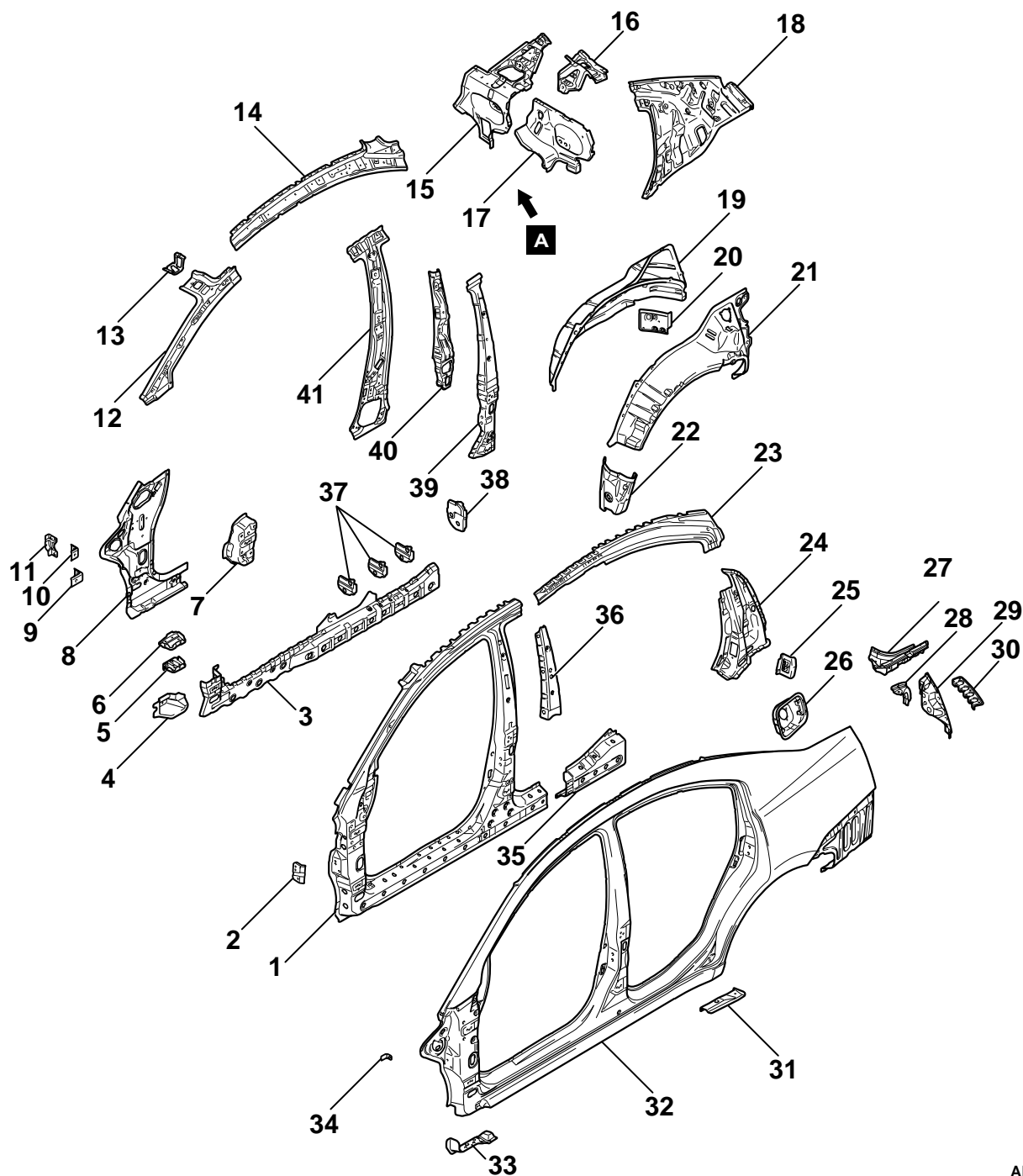
- |                                 |  |
|---------------------------------|--|
| 1. DASH CROSSMEMBER LOWER       | 8. DASH LOWER EXTENSION                |
| 2. DASH CROSSMEMBER             | 9. ACCELERATOR PEDAL BRACKET           |
| 3. PARTITION PLATE              | 10. STEERING COVER BRACKET             |
| 4. DASH PANEL                   | 11. ACCELERATOR STOPPER BRACKET        |
| 5. DASH PANEL DEADENING SHEET   | 12. DASH BRACE REINFORCEMENT           |
| 6. DASH PANEL DEADENING SUPPORT | 13. PCV BRACKET                        |
| 7. DASH PANEL REINFORCEMENT     | 14. BACKBONE BRACE BRACKET LOWER FRONT |

**SIDE BODY**

M4010011000147

**SIDE STRUCTURE**

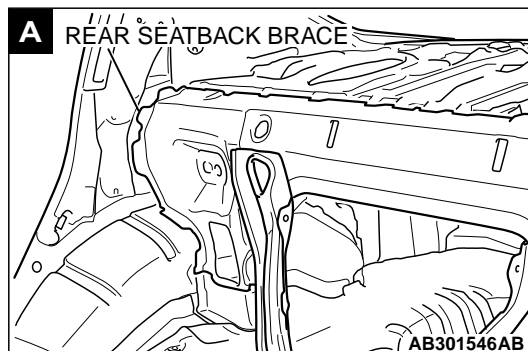
High rigidity cabin structure has maintained the cabin space and improved the passenger rescue upon impact.



AB301198AB



- |   |   |
|---|---|
| <ul style="list-style-type: none"><li>1. SIDE OUTER REINFORCEMENT</li><li>2. FRONT PILLAR BRACE REINFORCEMENT</li><li>3. SIDE SILL OUTER REINFORCEMENT INNER</li><li>4. SIDE SILL REINFORCEMENT FRONT</li><li>5. SIDE SILL REINFORCEMENT BULKHEAD FRONT</li><li>6. FRONT PILLAR BULKHEAD LOWER</li><li>7. FRONT DOOR HINGE REINFORCEMENT UPPER</li><li>8. FRONT PILLAR INNER LOWER</li><li>9. CROSSMEMBER BRACKET REAR LOWER (LEFT SIDE)</li><li>10. CROSSMEMBER BRACKET REAR UPPER (LEFT SIDE)</li><li>11. CROSSMEMBER BRACKET REAR (RIGHT SIDE)</li><li>12. FRONT PILLAR INNER UPPER</li><li>13. SUNVISOR BRACKET A</li><li>14. ROOF SIDE RAIL INNER</li><li>15. REAR SEATBACK BRACE</li><li>16. SEAT BELT REINFORCEMENT</li><li>17. REAR DECK CROSSMEMBER EXTENSION REAR</li><li>18. REAR QUARTER INNER PANEL UPPER</li><li>19. REAR WHEEL HOUSE PANEL INNER</li><li>20. REAR WHEEL HOUSE SHIELD PLATE REAR</li><li>21. REAR QUARTER INNER PANEL LOWER</li><li>22. REAR WHEEL HOUSE SHIELD PLATE FRONT</li><li>23. SIDE ROOF RAIL REINFORCEMENT REAR</li><li>24. REAR PILLAR REINFORCEMENT</li><li>25. STRIKER REINFORCEMENT</li><li>26. FUEL FILLER NECK BRACKET (LEFT SIDE)</li><li>27. REAR QUARTER OUTER PANEL EXTENSION</li><li>28. QUARTER CORNER PANEL</li><li>29. REAR LIGHT HOUSING</li></ul> | <ul style="list-style-type: none"><li>30. REAR BUMPER BRACKET</li><li>31. SIDE OUTER EXTENSION REAR</li><li>32. SIDE OUTER PANEL</li><li>33. SIDE OUTER EXTENSION FRONT</li><li>34. FENDER BRACKET</li><li>35. SIDE SILL REINFORCEMENT REAR</li><li>36. CENTER PILLAR REINFORCEMENT UPPER</li><li>37. SIDE SILL BULKHEAD B</li><li>38. SIDE SILL BULKHEAD REAR</li><li>39. CENTER PILLAR REINFORCEMENT</li><li>40. CENTER PILLAR SEATBELT REINFORCEMENT</li><li>41. CENTER PILLAR INNER</li></ul> |
|---|---|

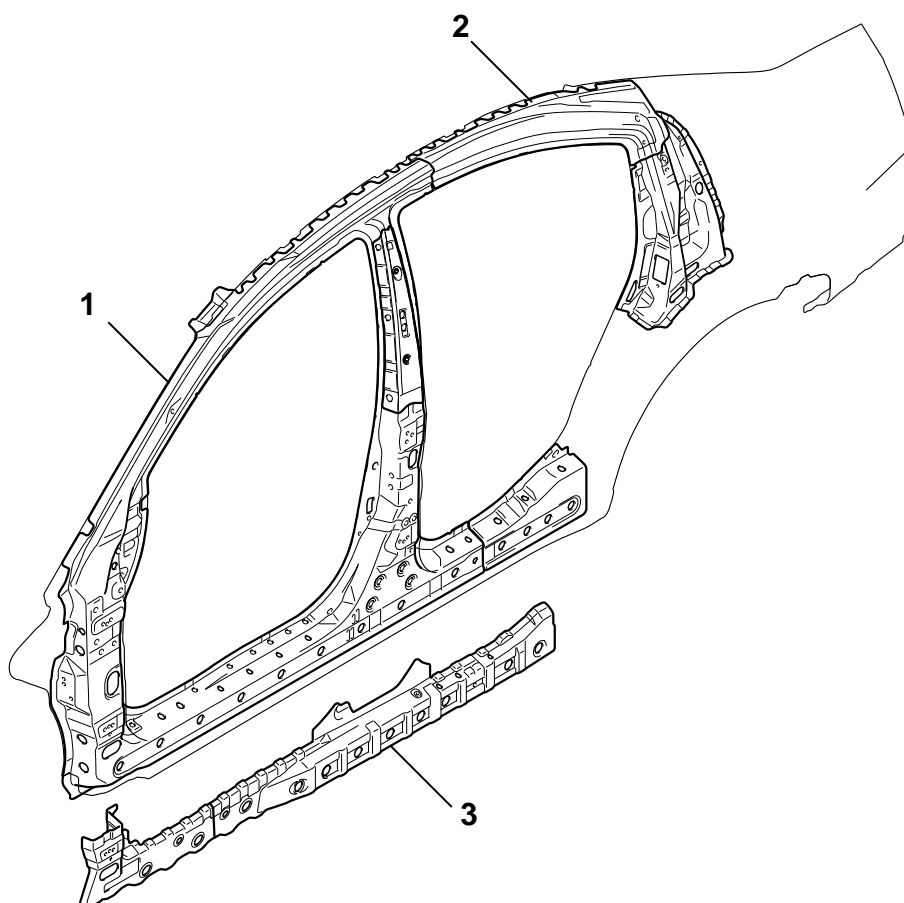


The rear deck has been connected to the rear floor with a closed section by a rear seatback plate and a rear deck crossmember extension rear, so that the body torsional rigidity and handling stability have been improved.

**SIDE STRUCTURE REINFORCEMENT**

1. A large side outer reinforcement has been installed to disperse energy upon impact efficiently, so that the safety upon impact has been improved.
2. The side roof rail reinforcement rear rigidity has been enhanced to maintain the cabin space and improve the passenger rescue upon off-set rear impact.
3. An uneven-thickness steel sheet\* has been adopted to the side sill outer reinforcement inner to thicken the sheet thickness of the front vehicle, so that the safety upon frontal impact has been improved.

*NOTE: \*: Steel plates with different thickness welded together to make one steel plate.*



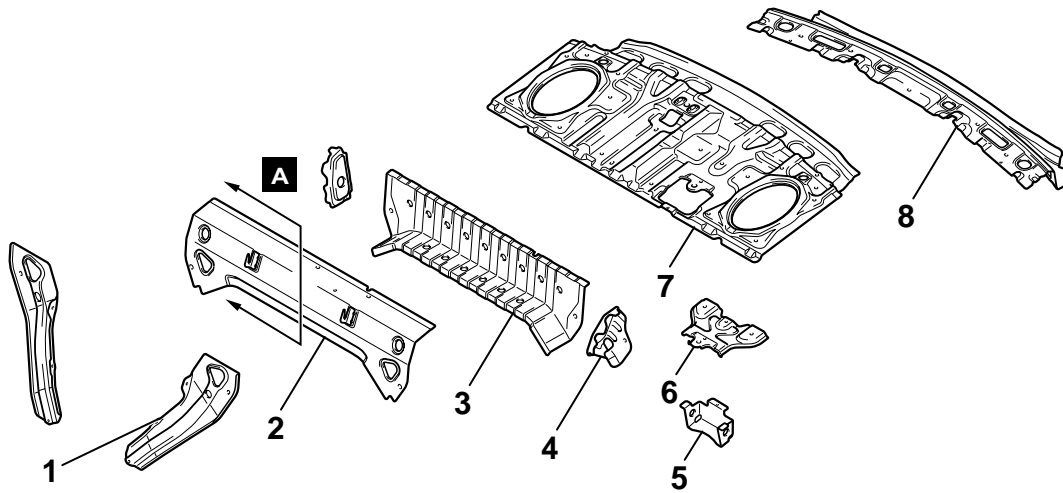
AB301238AB

## REAR BODY

M4010012000139

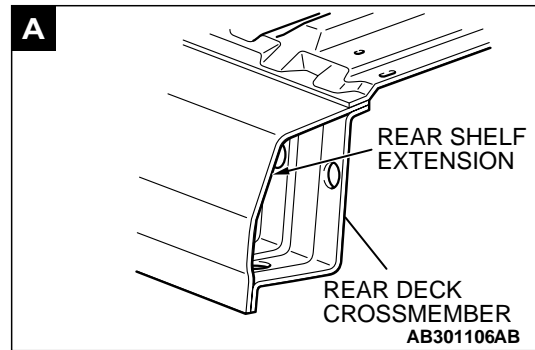
### REAR DECK

A rear seatback plate has been used to improve the body torsional rigidity.



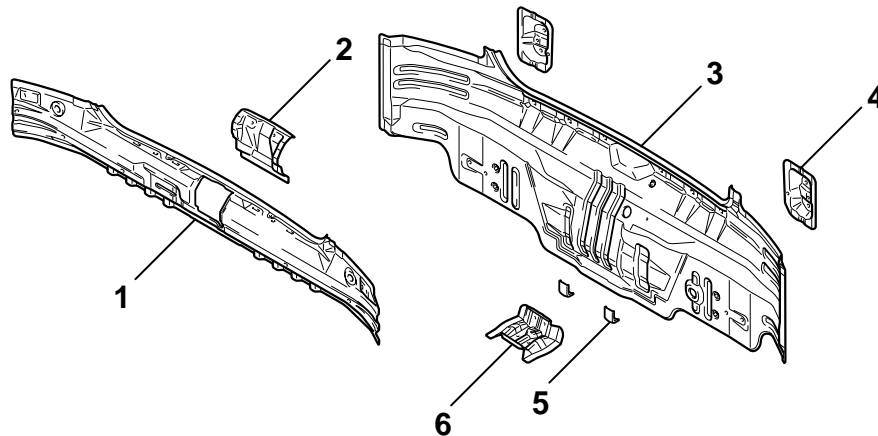
AB301148AB

1. REAR SEATBACK PLATE
2. REAR SHELF EXTENSION
3. REAR DECK CROSSMEMBER
4. REAR DECK CROSSMEMBER BULKHEAD
5. SEAT BELT PROTECTOR BRACKET
6. SEAT BELT REINFORCEMENT CENTER
7. REAR SHELF PANEL
8. REAR SHELF REINFORCEMENT



The front side of rear deck features a closed sectional structure, which has improved the body torsional rigidity and the driving stability.

### REAR END PANEL

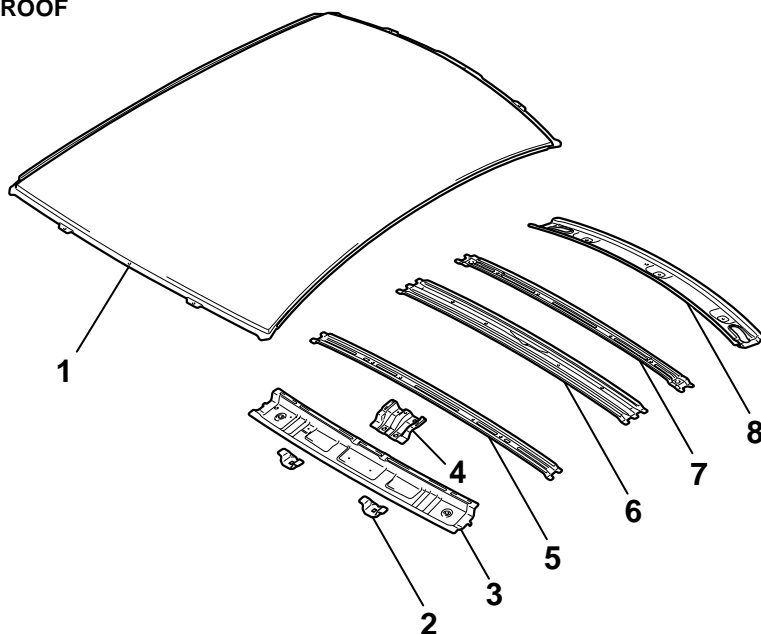
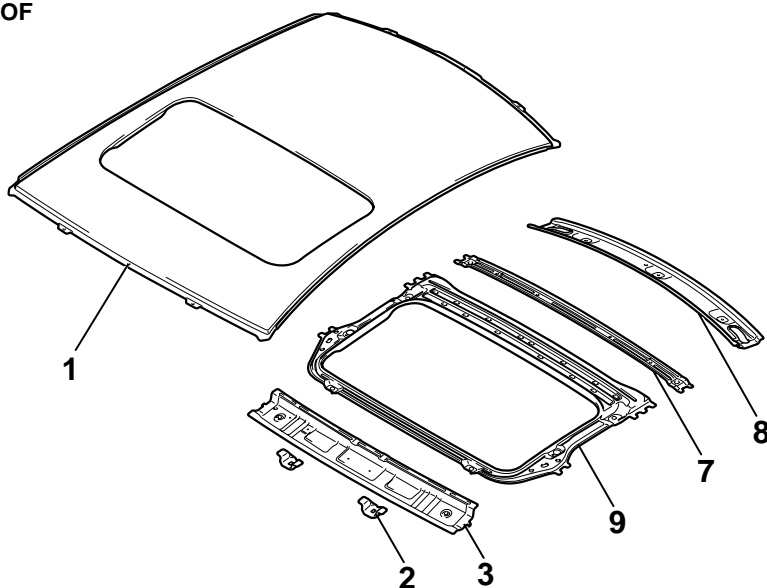


AB301147AB

1. REAR END PANEL INNER
2. TRUNK LID LOCK REINFORCEMENT
3. REAR END PANEL OUTER
4. REAR BUMPER BRACKET
5. REAR BUMPER A BRACKET
6. JACK BRACKET

**ROOF**

M4010013000143

**VEHICLES WITHOUT SUN ROOF****VEHICLES WITH SUN ROOF**

1. ROOF PANEL
2. SUNVISOR B BRACKET
3. ROOF RAIL FRONT INNER
4. MAP LAMP STAY
5. ROOF BOW FRONT

6. ROOF BOW CENTER
7. ROOF BOW REAR
8. ROOF REAR RAIL
9. ROOF REINFORCEMENT

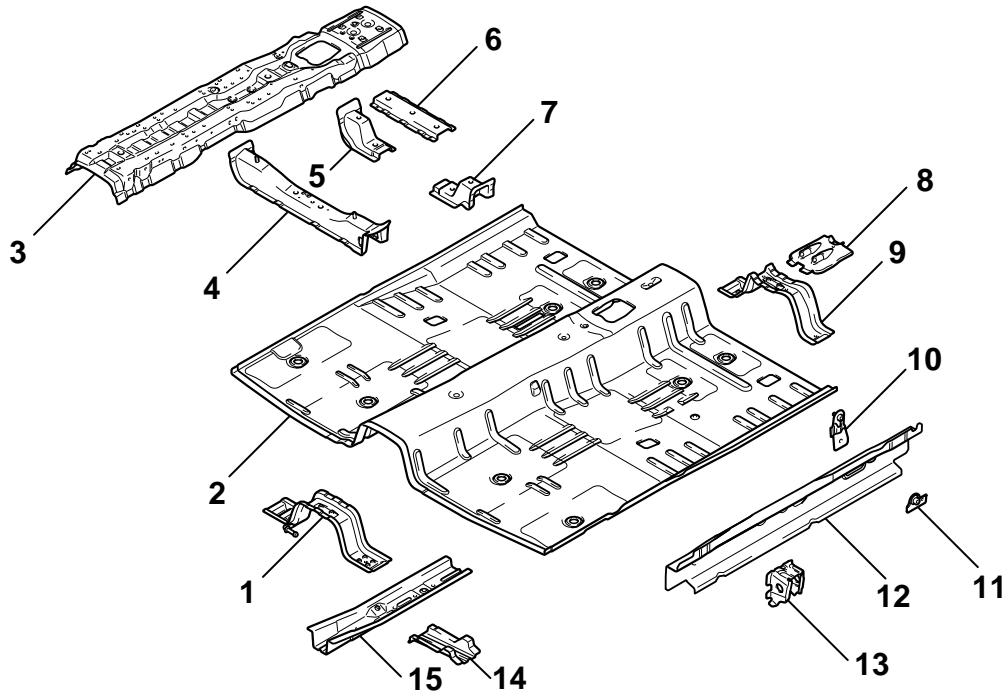
AB301239 AB

## UNDER BODY

M4010014000146

### FRONT FLOOR

- The curved floor is used to reduce vibration.
- The frame members has been thickened and aligned optimal to improve cabin rigidity.

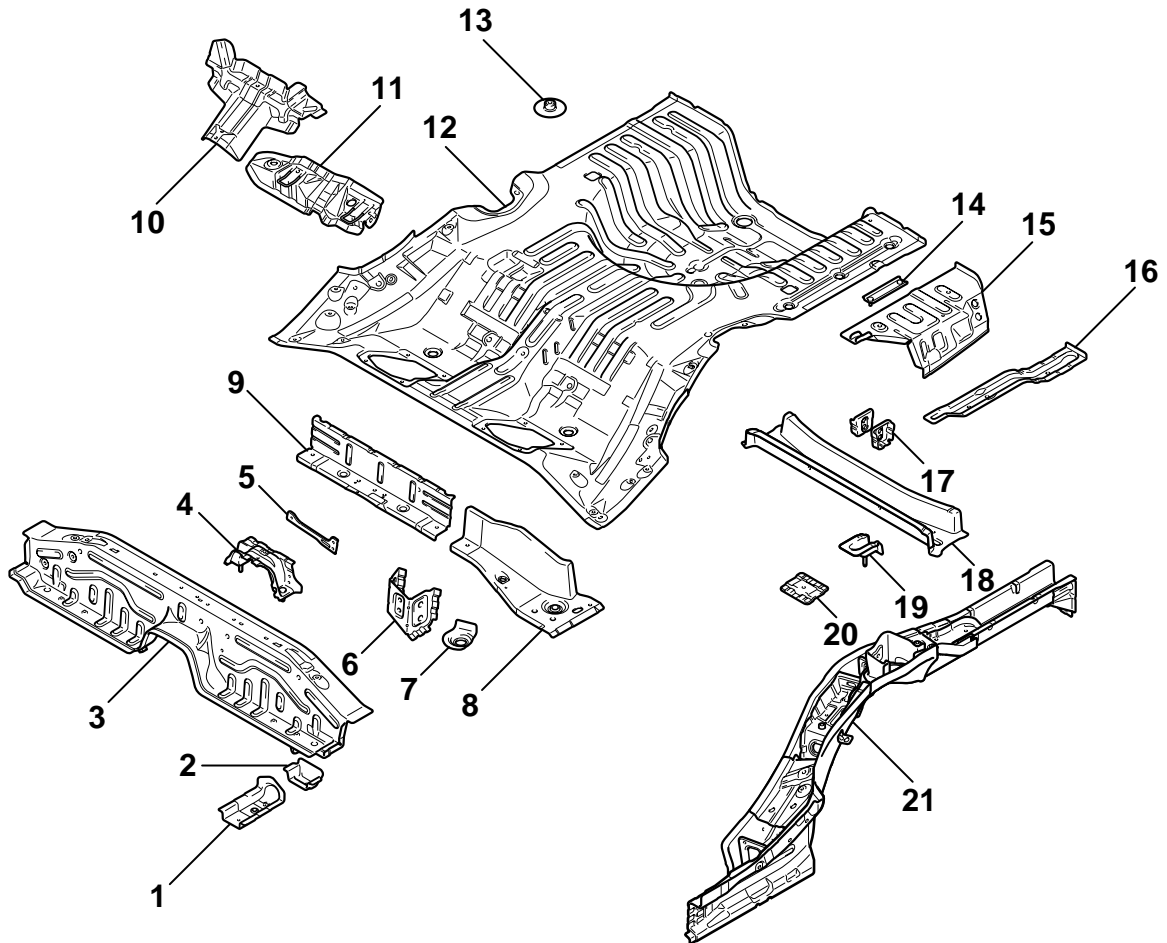


AB301151AB

- |   |   |
|---|---|
| <ol style="list-style-type: none"> <li>1. FRONT FLOOR CROSSMEMBER FRONT BACKBONE</li> <li>2. FRONT FLOOR PAN</li> <li>3. BACKBONE REINFORCEMENT</li> <li>4. FRONT FLOOR CROSSMEMBER FRONT</li> <li>5. FRONT SEAT BRACKET REAR CENTER</li> <li>6. FRONT FLOOR CROSSMEMBER REAR</li> <li>7. FRONT SEAT BRACKET REAR SIDE</li> </ol> | <ol style="list-style-type: none"> <li>8. PARKING CABLE REINFORCEMENT</li> <li>9. BACKBONE CROSSMEMBER REAR</li> <li>10. SEAT BELT SIDE BRACKET</li> <li>11. SEAT BELT REINFORCEMENT</li> <li>12. FRONT FLOOR SIDE SILL INNER</li> <li>13. SIDE SILL BULKHEAD A</li> <li>14. FRONT FLOOR LOWER REINFORCEMENT</li> <li>15. FRONT FLOOR SIDEMEMBER</li> </ol> |
|---|---|

### REAR FLOOR

- The rear floor side member is straighter and has larger cross-sections to efficiently absorb energy upon impact. And the plate thickness is optimized to reduce weight.
- The rear shock absorber installation part is arranged beside the side member to improve assembling rigidity and handling stability.
- The reinforcement in the rear floor side member has been laid out appropriately to enhance the rigidity, so that the protection of fuel tank upon impact has been improved.

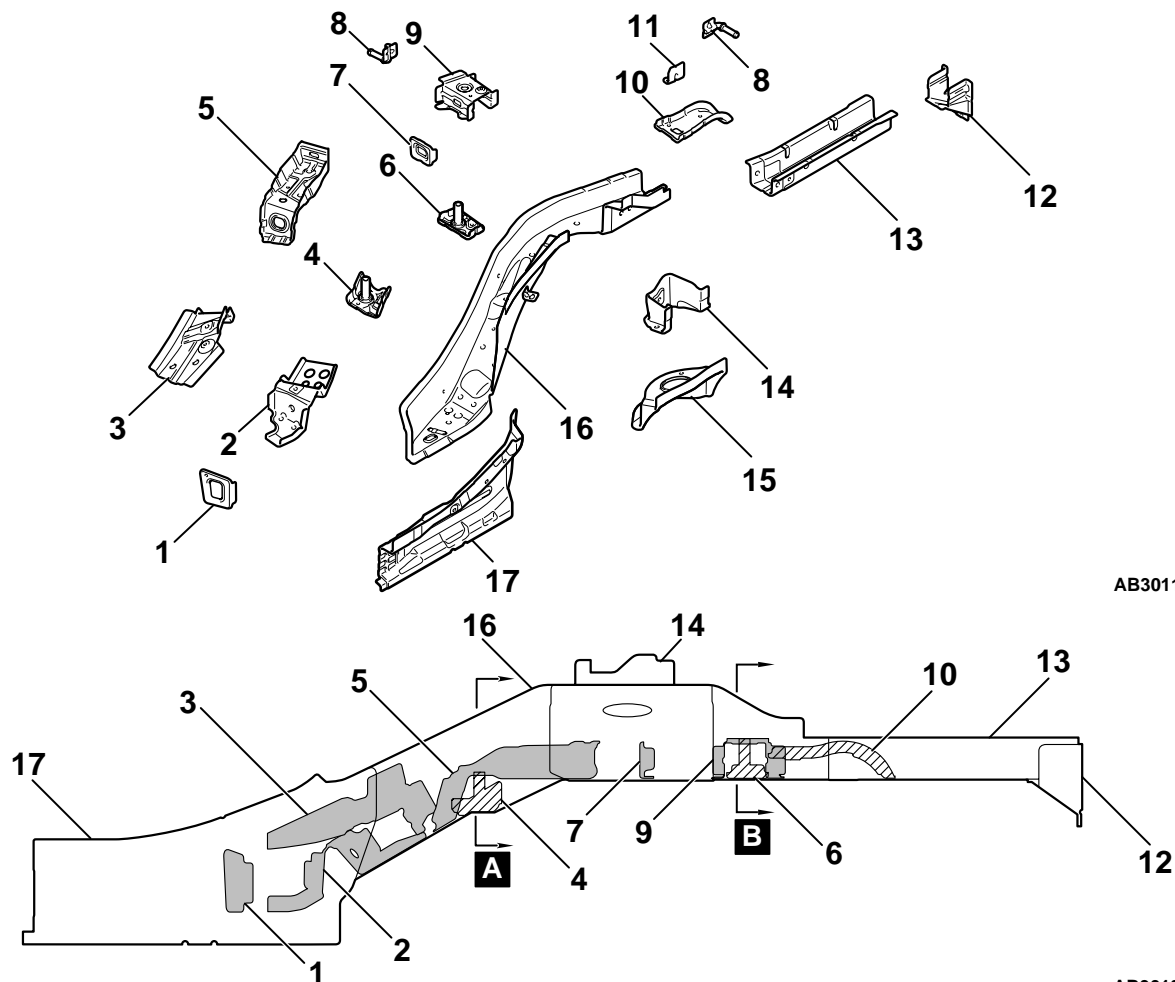


AB301152AB

1. FRONT FLOOR SIDEMEMBER EXTENSION
2. FUEL TANK PROTECTOR BRACKET
3. REAR SEAT CROSSMEMBER FRONT
4. CENTER BEARING BRACKET
5. BACK BONE PLATE REAR
6. REAR SEAT CROSSMEMBER BULKHEAD SIDE
7. REAR SEAT CROSSMEMBER REINFORCEMENT REAR
8. REAR SEAT CROSSMEMBER REAR SIDE
9. REAR SEAT CROSSMEMBER REAR CENTER
10. REAR SEAT BACK PLATE EXTENSION
11. CHILD ANCHOR BRACKET

12. REAR FLOOR PAN
13. SPARE TIRE BRACKET
14. ORVR REINFORCEMENT (LEFT SIDE)
15. REAR FLOOR SIDE BRACE
16. SPARE TIRE WELL REINFORCEMENT
17. REAR FLOOR CROSSMEMBER BULKHEAD CENTER
18. REAR FLOOR CROSSMEMBER
19. FUEL TANK SUPPORT BRACKET REAR
20. SEAT BELT REAR FLOOR REINFORCEMENT
21. REAR FLOOR SIDEMEMBER

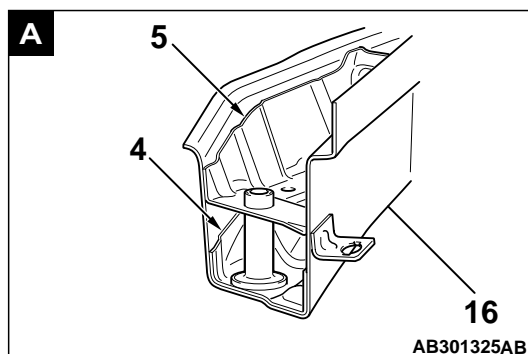
## REAR FLOOR SIDEMEMBER REINFORCEMENT



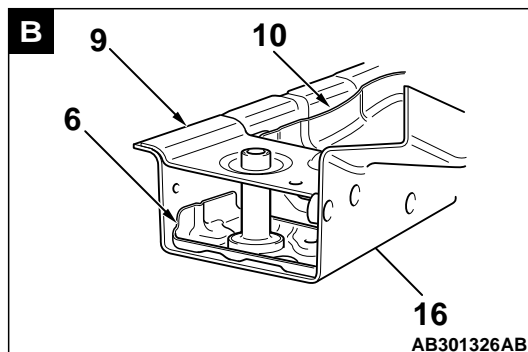
AB301192AB

AB301327AB

1. REAR SEAT CROSSMEMBER BULKHEAD
2. TRAILING ARM SUPPORT BULKHEAD
3. REAR SEAT BELT BRACKET
4. REAR SUSPENSION SUPPORT REINFORCEMENT FRONT
5. REAR SUSPENSION SUPPORT BULKHEAD FRONT
6. REAR SUSPENSION SUPPORT REINFORCEMENT REAR
7. REAR FLOOR SIDEMEMBER BULKHEAD
8. MUFFLER HANGER REAR (RIGHT SIDE)
9. REAR SUSPENSION SUPPORT BULKHEAD REAR
10. REAR FLOOR SIDEMEMBER REINFORCEMENT
11. FILLER NECK PROTECTOR BRACKET (LEFT SIDE)
12. REAR FLOOR SIDEMEMBER GUSSET
13. REAR FLOOR SIDEMEMBER EXTENSION
14. REAR SPRING BRACKET SUPPORT
15. SPRING HOUSE BRACKET
16. REAR FLOOR SIDEMEMBER
17. REAR FLOOR SIDE SILL INNER



AB301325AB

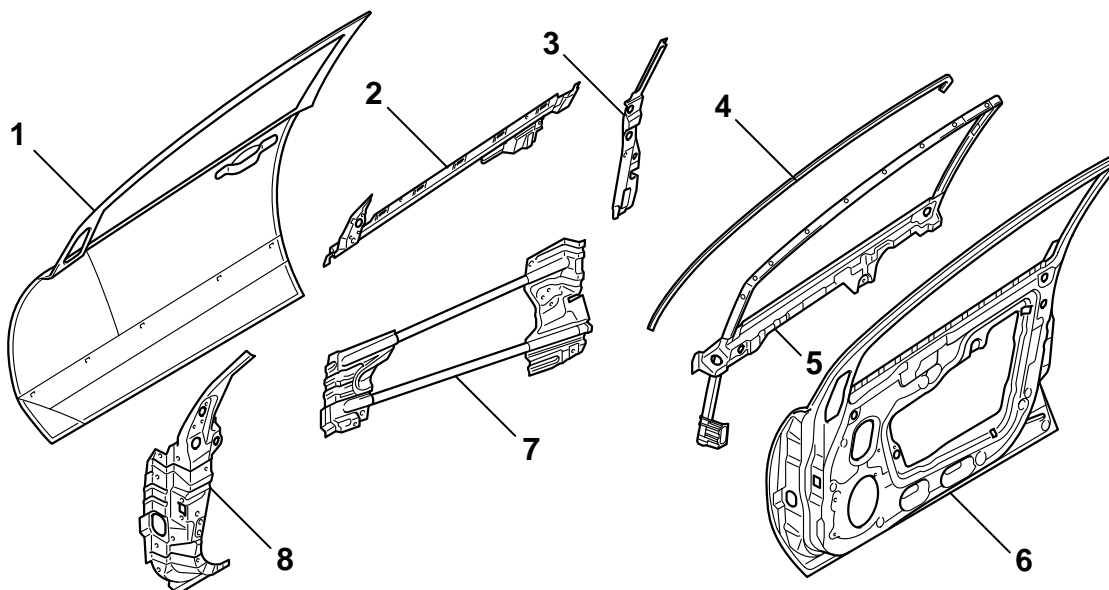
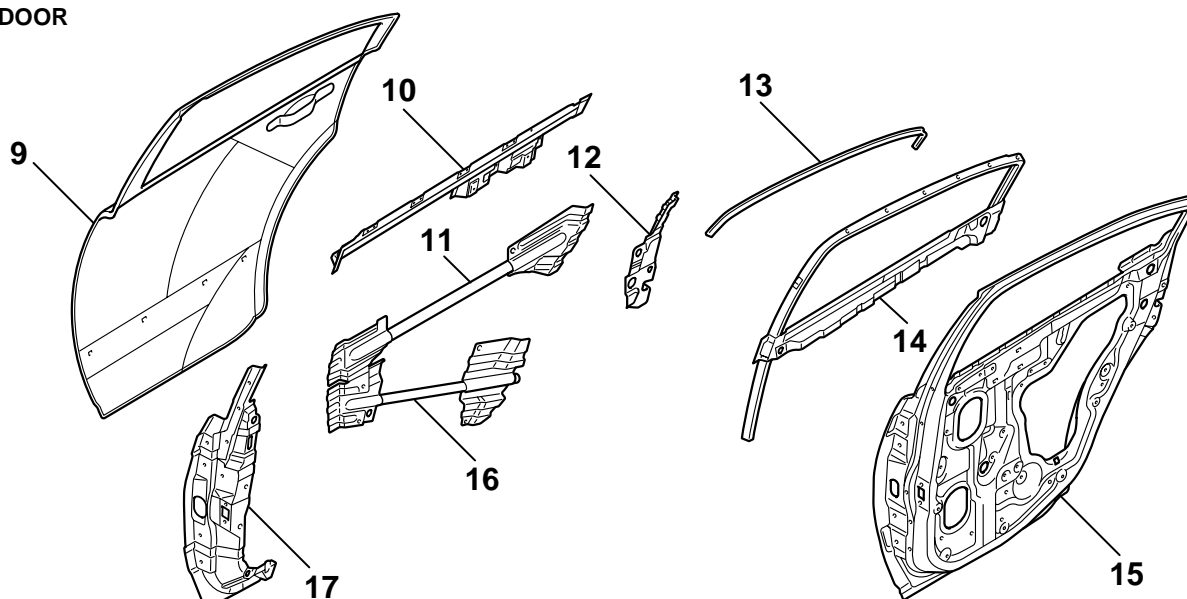


AB301326AB

**DOOR**

M4010015000138

Two side door beams have been installed to improve the safety upon side impact.

**FRONT DOOR****REAR DOOR**

1. FRONT DOOR OUTER PANEL
2. FRONT DOOR BELT LINE OUTER REINFORCEMENT
3. FRONT DOOR LATCH REINFORCEMENT
4. FRONT DOOR WEATHER STRIP HOLDER
5. FRONT DOOR SASH
6. FRONT DOOR INNER PANEL
7. FRONT DOOR SIDE DOOR BEAM
8. FRONT DOOR HINGE REINFORCEMENT
9. REAR DOOR OUTER PANEL

10. REAR DOOR BELT LINE OUTER REINFORCEMENT
11. REAR DOOR SIDE DOOR BEAM UPPER
12. REAR DOOR LATCH REINFORCEMENT
13. REAR DOOR WEATHER STRIP HOLDER
14. REAR DOOR SASH
15. REAR DOOR INNER PANEL
16. REAR DOOR SIDE DOOR BEAM LOWER
17. REAR DOOR HINGE REINFORCEMENT

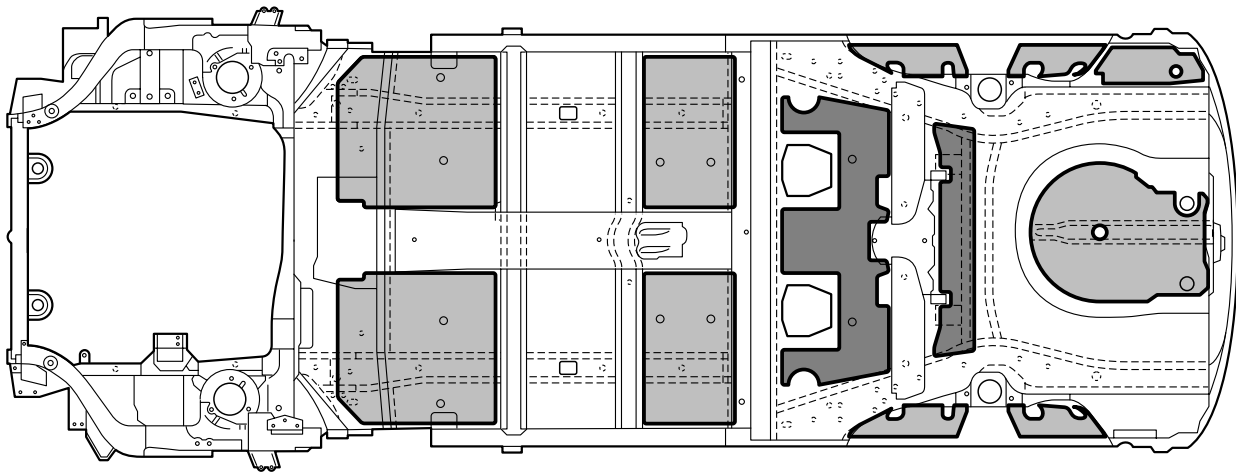
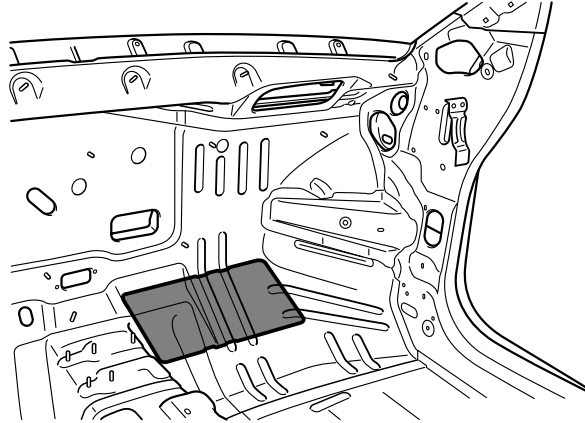
AB301321 AB



## SILENCER APPLICATION LOCATIONS

M4010005000171

A silencer (melting sheet) has been adhered on the dash panel and the top part of the floor to improve anti-vibration performance and to shut-out exhaust gas heat.



□ : 1.6 mm (0.06 in) thick melting sheet.

■ : 3.2 mm (0.13 in) thick melting sheet. [Place two 1.6 mm (0.06 in) melting sheet one on top of another.]

**NOTE:**

When you use melting sheet(s) in place, follow the instructions enclosed by [ ].

AB301541AB

## FOAMING MATERIAL USAGE LOCATIONS

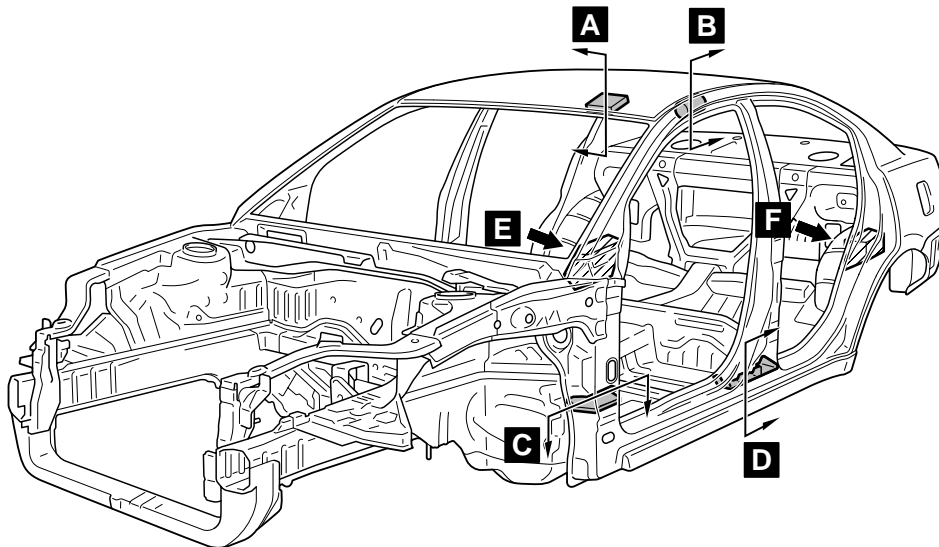
M4010006000033

- Introduction of noise was prevented by inserting urethane foam inside the front pillar and rear spring bracket support.
- By filling the roof rail, the front pillar, center pillar, rear pillar and inside the wheelhouse arch with foam acoustic material, penetration of noise is prevented.

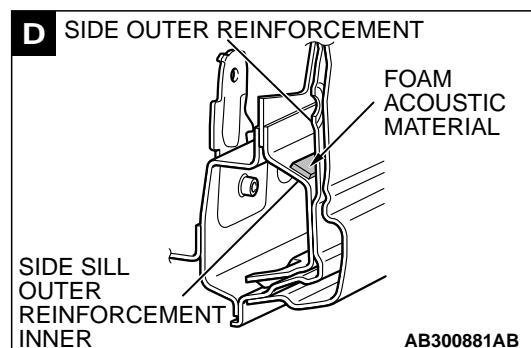
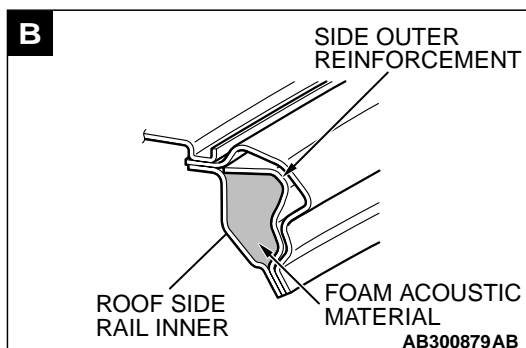
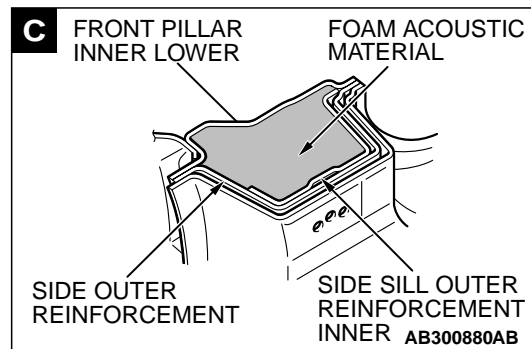
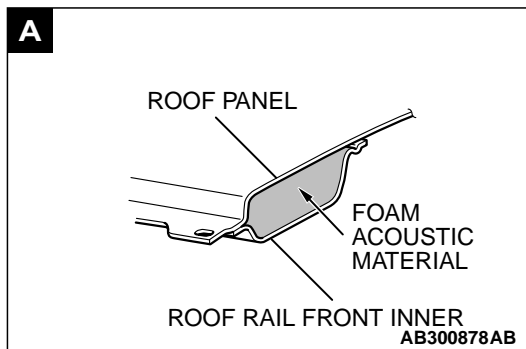
### **⚠ CAUTION**

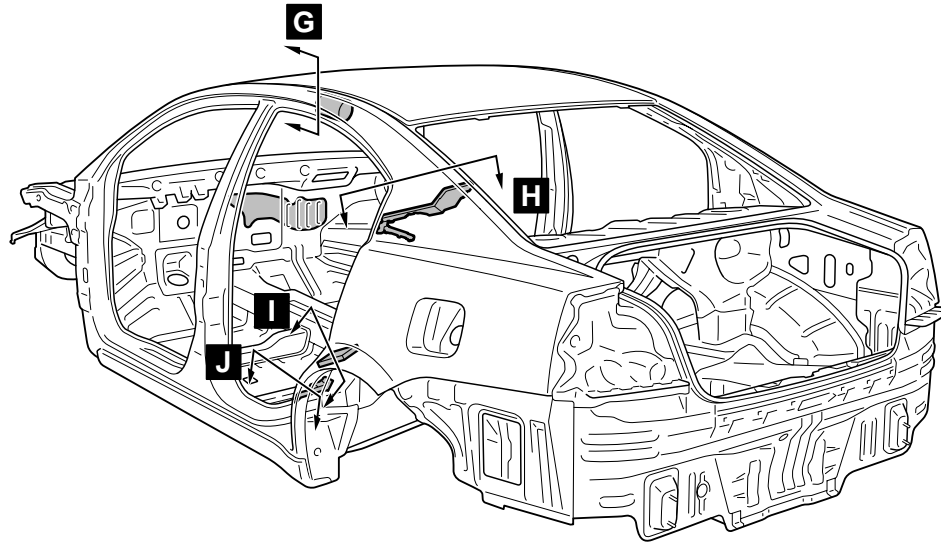
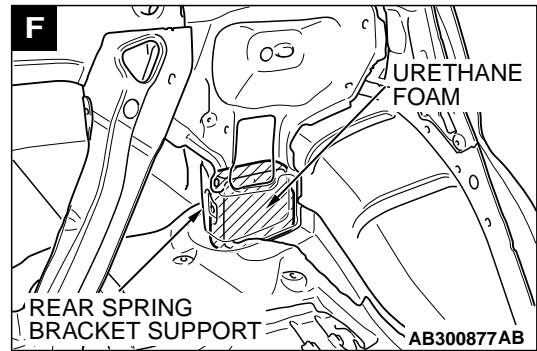
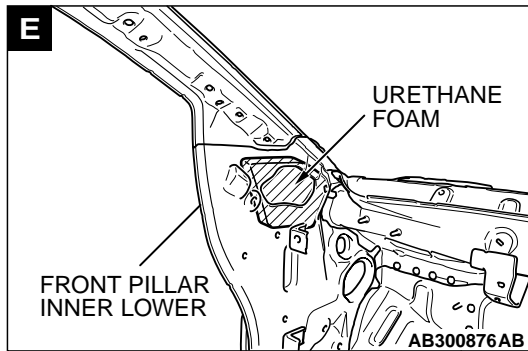
The foam materials may burn when heated. Always observe the following instructions.

- Never use a gas burner or burn the areas using foam materials.
- When cutting the parts using foam materials, ensure to use tools (air saw, etc.) that do not generate fire.
- If there are residual foam materials at body side then weld after removing the foam materials from periphery of the welding area.

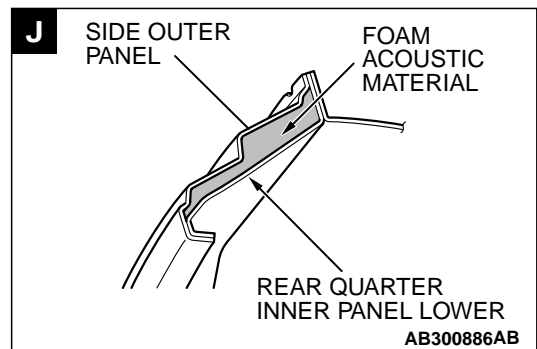
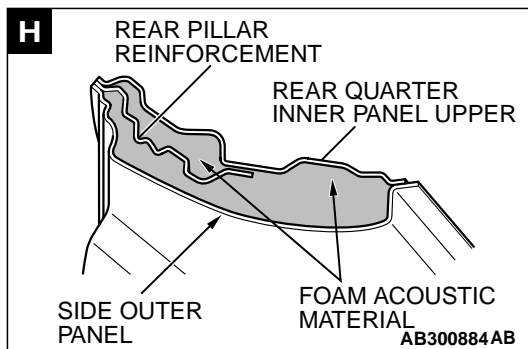
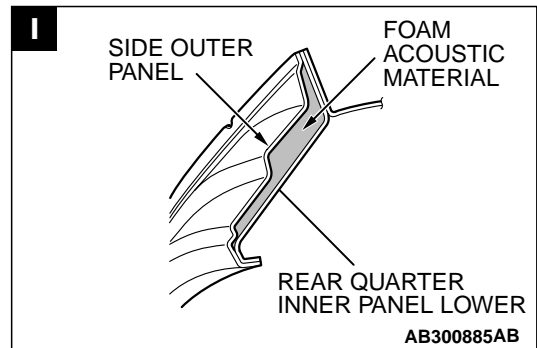
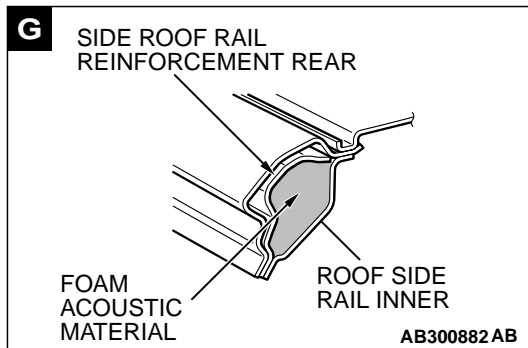


AB300924AB





AB300925AB



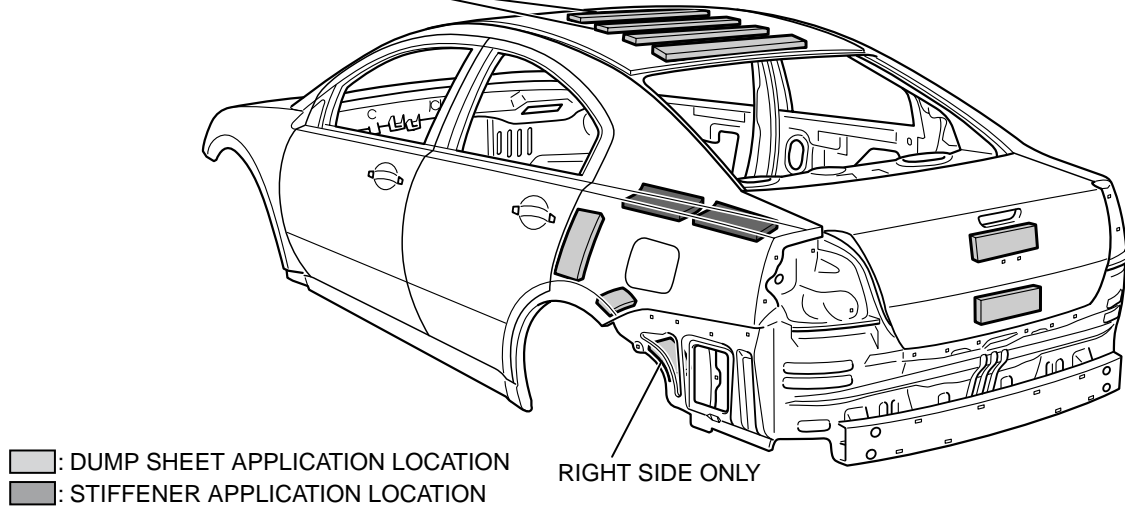
# STIFFENER AND DUMP SHEET APPLICATION LOCATIONS

M4010009000032

Sound insulation was improved with anti-vibration effects and heightening surface rigidity with a stiffener on the inner side of the side outer panel, as well as a damping sheet adhered to the inner side of the side outer panel, rear quarter inner panel lower, roof panel and trunk lid outer panel.

**NOTE:** . The main contents of a stiffener are epoxy resin. It comes in a sheet form and contains a mixture of glass fiber and filler, and cures (stiffens) when heated. It is used to improve the rigidity of the outer plate.

VEHICLES WITHOUT  
SUN ROOF ONLY



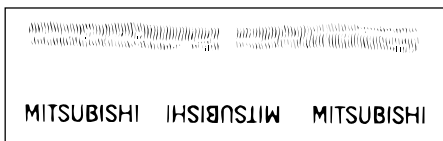
AB301322 AB

## THEFT PROTECTION

M4010017000060

### THEFT PROTECTION

#### THEFT PROTECTION LABEL FOR ORIGINAL PARTS



#### FOR REPLACEMENT PARTS



AC211646AB

In order to protect against theft, a Vehicle Identification Number (VIN) is attached as a plate or label to the following major parts of the engine and transaxle, as well as main outer panels: Engine cylinder block, Transaxle housing, Fender, Doors, Trunk lid, Rear quarter outer panel, Hood, Bumpers. In addition, a theft-protection label is attached to replacement parts for the body outer panel main components, and the same data is stamped into replacement parts for the engine and the transaxle.

#### **⚠ CAUTION**

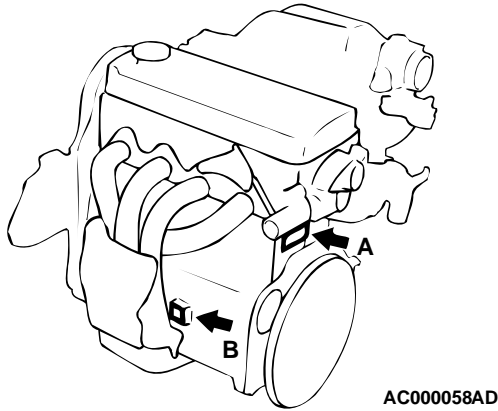
Cautions regarding panel repairs:

1. When repainting original parts, do so after first masking the theft-protection label. After painting, be sure to peel off the masking tape.
2. The theft-protection label for replacement parts is covered by masking tape, so such parts can be painted as is. The masking tape should be removed after painting is finished.
3. The theft-protection label should not be removed from original parts or replacement parts.

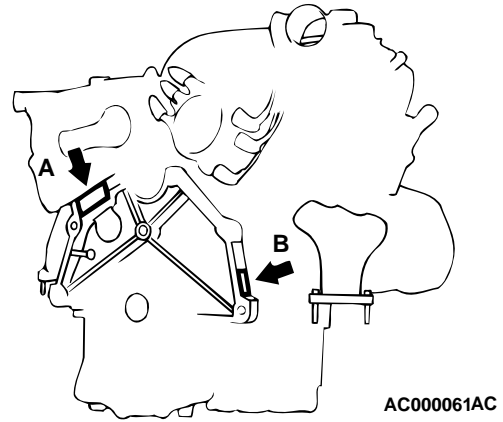
**LOCATIONS**

**LABEL AREA (A: FOR ORIGINAL EQUIPMENT PARTS, B: FOR REPLACEMENT PARTS)**

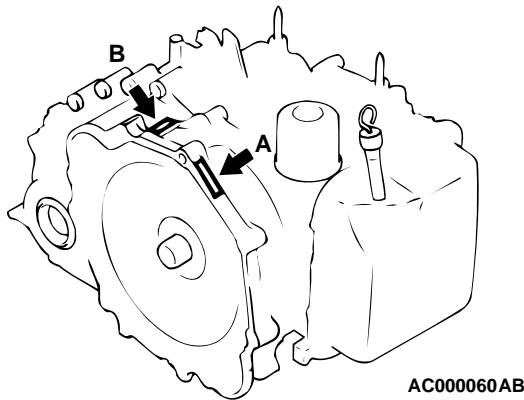
**ENGINE  
<2.4L ENGINE>**



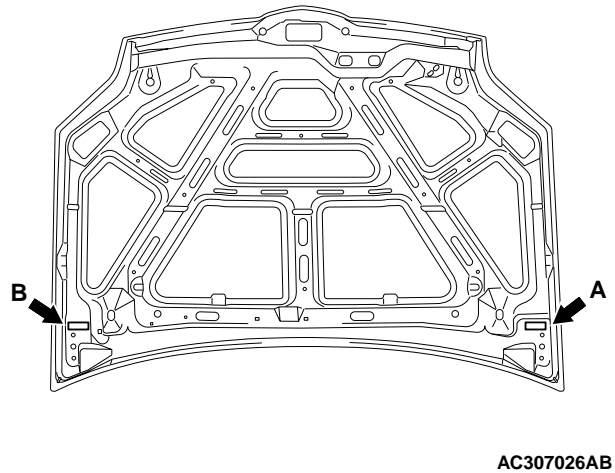
**ENGINE  
<3.8L ENGINE>**



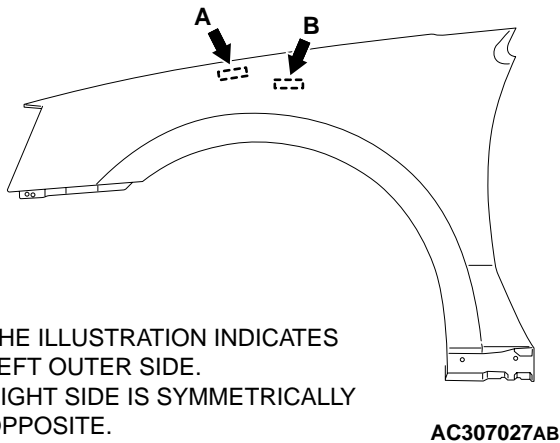
**AUTOMATIC TRANSAXLE**



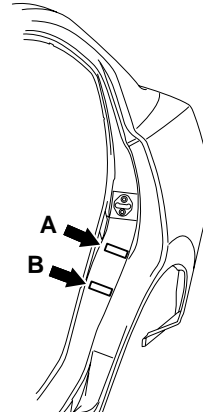
**HOOD**



**FENDER**

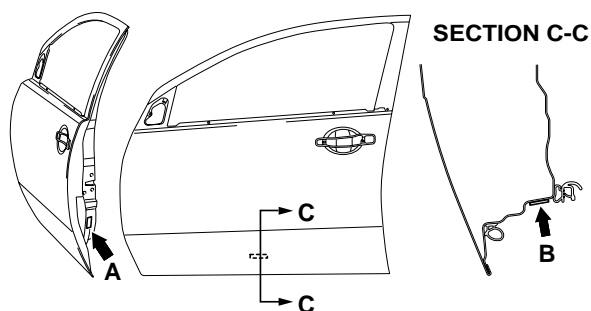


**REAR QUARTER OUTER PANEL**



## LABEL AREA (A: FOR ORIGINAL EQUIPMENT PARTS, B: FOR REPLACEMENT PARTS)

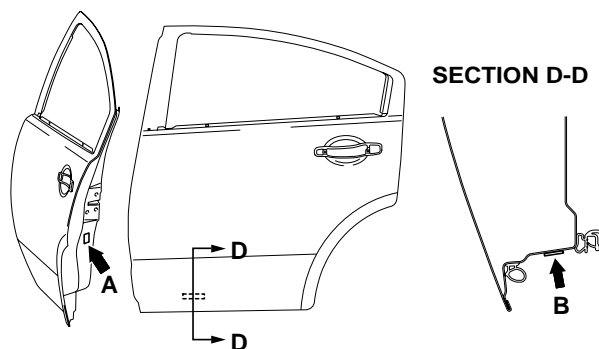
## FRONT DOOR



THE ILLUSTRATION INDICATES LEFT INNER SIDE.  
RIGHT SIDE IS SYMMETRICALLY OPPOSITE.

AC307042AB

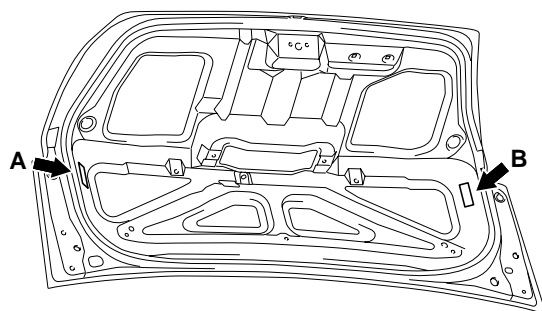
## REAR DOOR



THE ILLUSTRATION INDICATES LEFT INNER SIDE.  
RIGHT SIDE IS SYMMETRICALLY OPPOSITE.

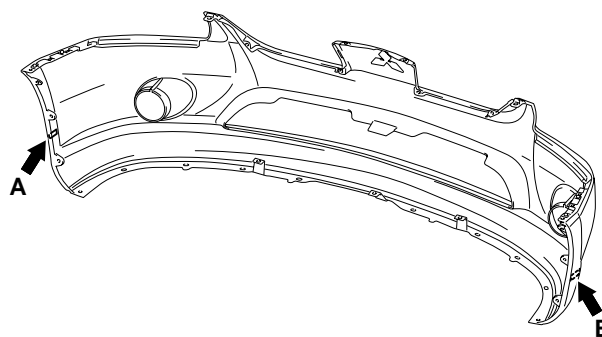
AC307044AB

## TRUNK LID



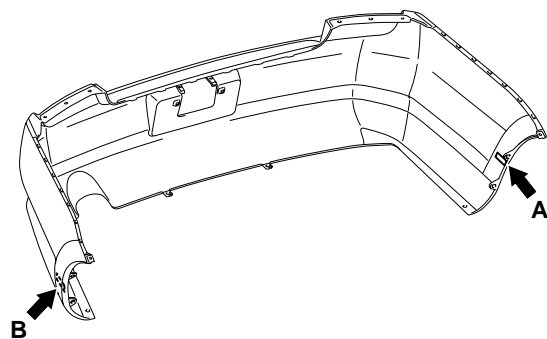
AC307046AB

## FRONT BUMPER



AC307067AB

## REAR BUMPER



AC307083AB