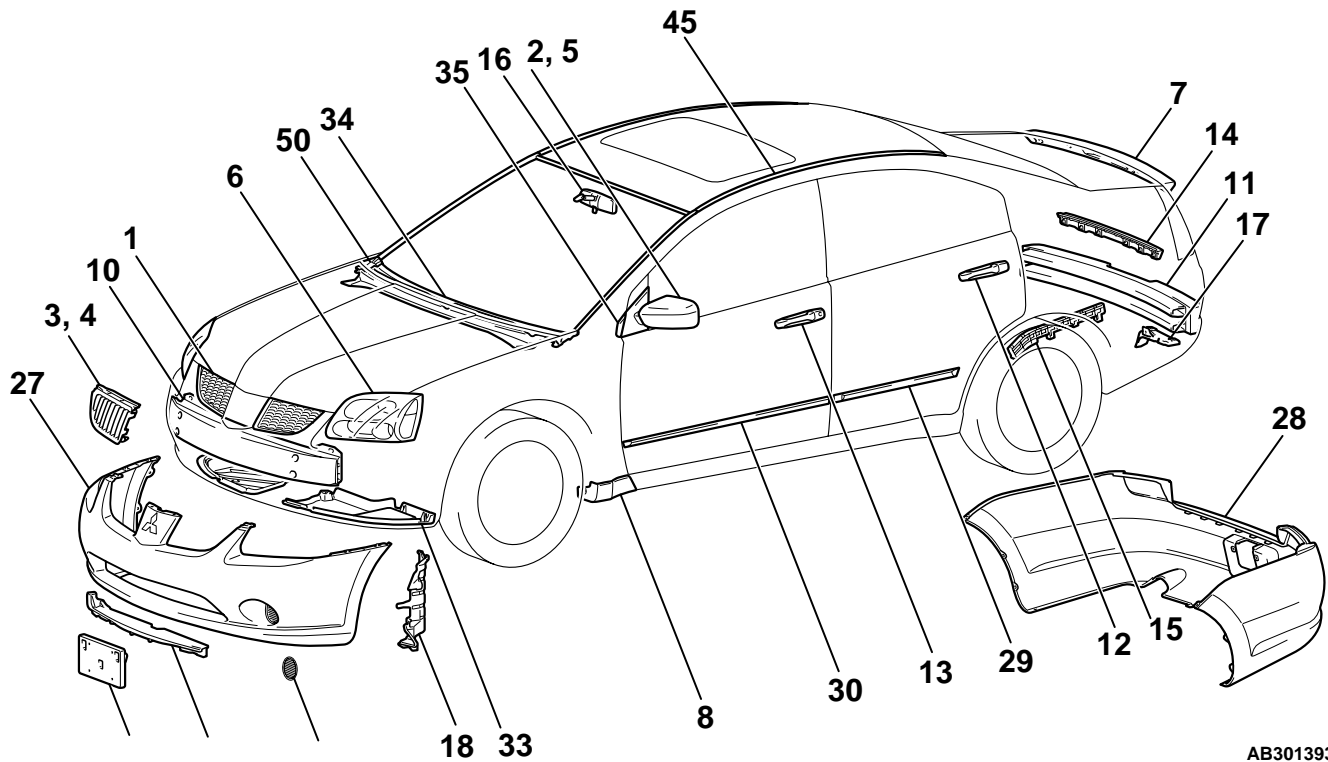

GROUP 5**SYNTHETIC-RESIN
PARTS****CONTENTS**

LOCATION OF SYNTHETIC-RESIN PARTS	5-2
---	------------

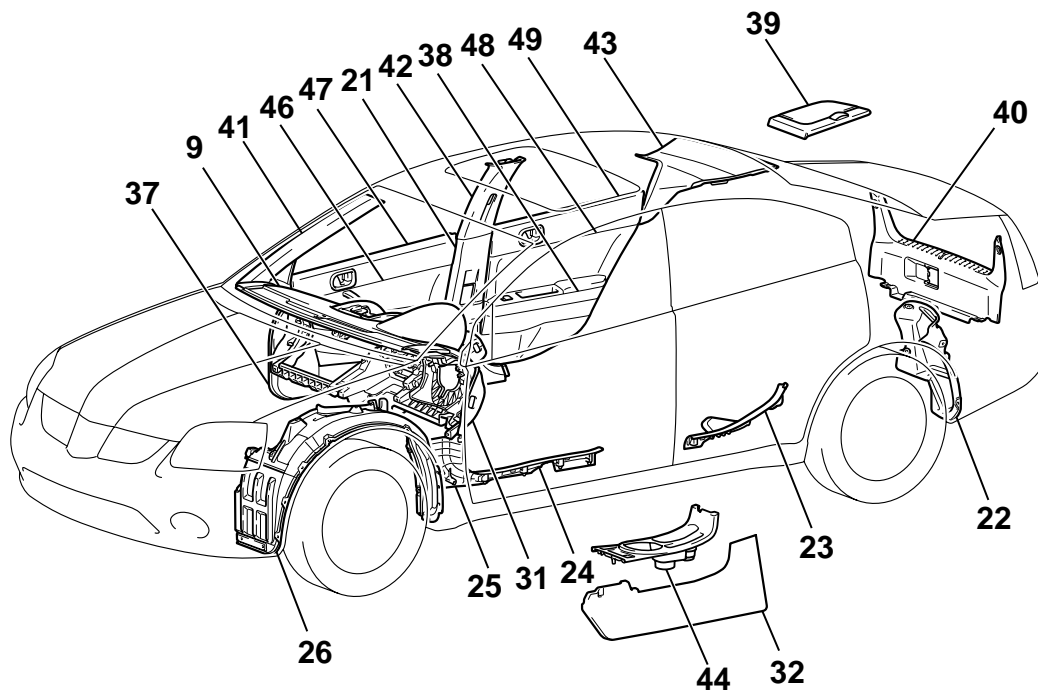
LOCATION OF SYNTHETIC-RESIN PARTS

M4050001000173

The location and material of each of the principal synthetic-resin parts are shown below.



AB301393AB



AB301394AB

NO	PART NAME	NAME OF RESIN	ABBREVIATION	HEAT-WITHST AND TEMP [°C (°F)]
1	Radiator grille (Except for GTS) (Plating)	Acrylonitrile butadiene styrene	ABS	80 (176)
2	Door mirror (Body color)			
3	Radiator grille (GTS)	Acrylonitrile styrene acrylate	ASA	80 (176)
4	Radiator grille (Except for GTS) (Material color)			
5	Door mirror (Black)			
6	Headlight	Polycarbonate	PC	120 (248)
7	Rear air spoiler	Polycarbonate plus Acrylonitrile butadiene styrene	PC+ABS	80 (176)
8	Front mudguard			
9	Instrument panel			
10	Front bumper core	Polycarbonate plus Polybutylene terephthalate	PC+PBT	80 (176)
11	Rear bumper core			
12	Rear door outside handle			
13	Front door outside handle			
14	Rear bumper center bracket	Polyacetal	POM	120 (248)
15	Rear bumper side bracket			
16	Inside rear view mirror	Polypropylene	PP [HCPP]	90 – 100 (194 – 212)
17	Rear end outer plate			
18	Air guide side panel			
19	Front bumper fog light hole cover			
20	Air guide center panel			
21	Center pillar lower trim			
22	Rear splash shield			
23	Rear scuff plate			
24	Front scuff plate			
25	Cowl side trim			
26	Front splash shield			
27	Front bumper face	Talc filled rubber modified polypropylene	PP+E/P-TD	80 (176)
28	Rear bumper face			
29	Rear door side protector molding	Talc filled rubber modified polypropylene (20%)	PP+E/P-TD20	110 (230)
30	Front door side protector molding			

NO	PART NAME	NAME OF RESIN	ABBREVIATION	HEAT-WITHST AND TEMP [°C (°F)]
31	Instrument panel side cover	Talc filled polypropylene (10%)	PP-TD10	110 – 120 (230 – 248)
32	Base floor console			
33	Front bumper under side cover	Talc filled polypropylene (15%)	PP-TD15	110 – 120 (230 – 248)
34	Front deck garnish	Talc filled polypropylene (20%)	PP-TD20	120 – 130 (248 – 266)
35	Front delta garnish			
36	License plate garnish			
37	Front door lower trim			
38	Rear door lower trim			
39	Rear speaker garnish			
40	Rear end trim cover			
41	Front pillar trim	Talc filled polypropylene (25%)	PP-TD25	100 (212)
42	Center pillar upper trim			
43	Rear pillar trim			
44	Upper panel			
45	Roof drip molding	Polyvinyl chloride	PVC	80 (176)
46	Front door center trim			
47	Front door upper trim			
48	Rear door center trim			
49	Rear door upper trim			
50	Fender hole cover	Thermoplastic elastomer	TPE	80 – 100 (176 – 212)

NOTE:

- If the material symbols designated by the ISO differ from the old symbols, both are given, with the old symboling enclosed in brackets.
ISO: International Standardization Organization.
- A slash (/) in the material symbol indicates that two different materials make two-layer construction. A plus sign (+) indicates that the two different materials mix each other.
- The indicated heat-withstand temperature for parts which are composed of two or more types of material is the value for the material with the lowest heat-withstand temperature.
- The material symbols for synthetic-resin parts are embossed on the parts in hidden places.