

GROUP 80B

SPLICE LOCATIONS

CONTENTS

HOW TO READ SPLICE LOCATIONS.....	80B-2	ENGINE AND TRANSAXLE <3.8L ENGINE>	80B-5
INDEX.....	80B-3	DASH PANEL.....	80B-6
ENGINE COMPARTMENT.....	80B-4	FLOOR AND ROOF	80B-7
ENGINE AND TRANSAXLE <2.4L ENGINE>	80B-4	DOOR	80B-7
		LUGGAGE COMPARTMENT.....	80B-8

HOW TO READ SPlice LOCATIONS

M1802000100454

"Splice locations" describes splice points of each wiring harness on an actual vehicle. Some variations are included in one splice location. Accordingly, some locations may not be applicable for individual vehicles.

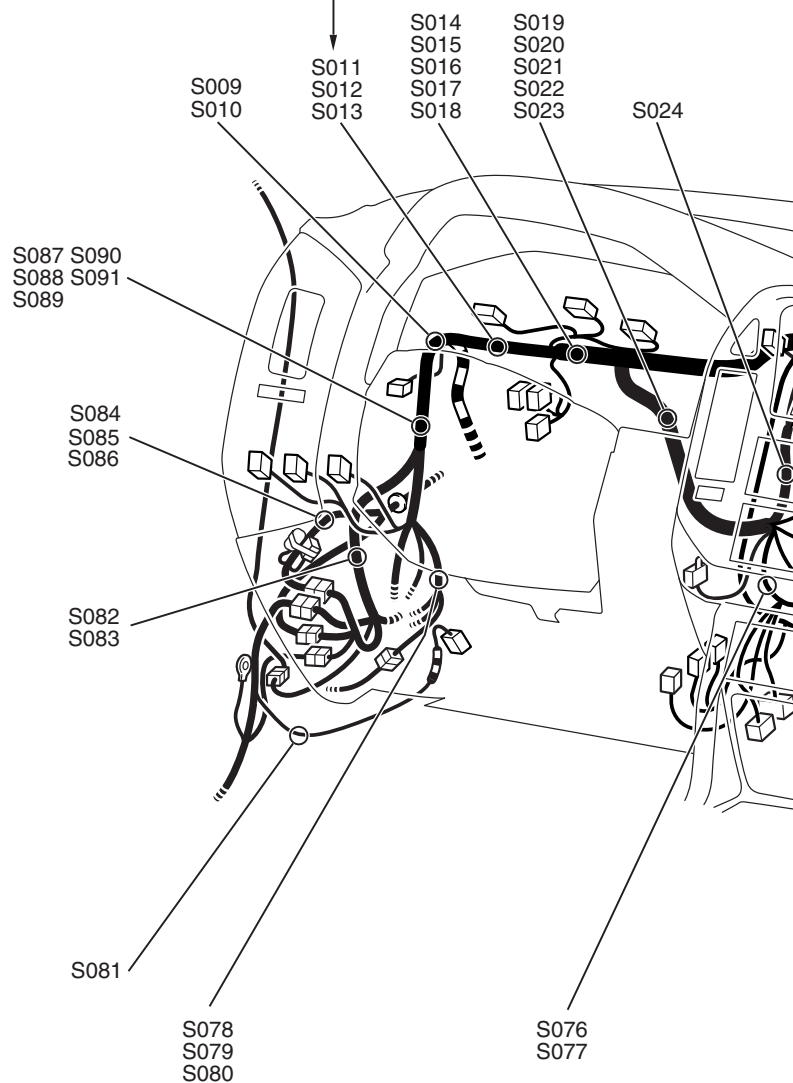
Indicates a splice point number.

The splice point numbers are identical to those in "CIRCUIT DIAGRAMS," making them easy to use. In addition, the splice point numbers are usually numbered clockwise.

Example: S 013

Sequential number

Prefix meaning splice point



ACX02177 AC

INDEX

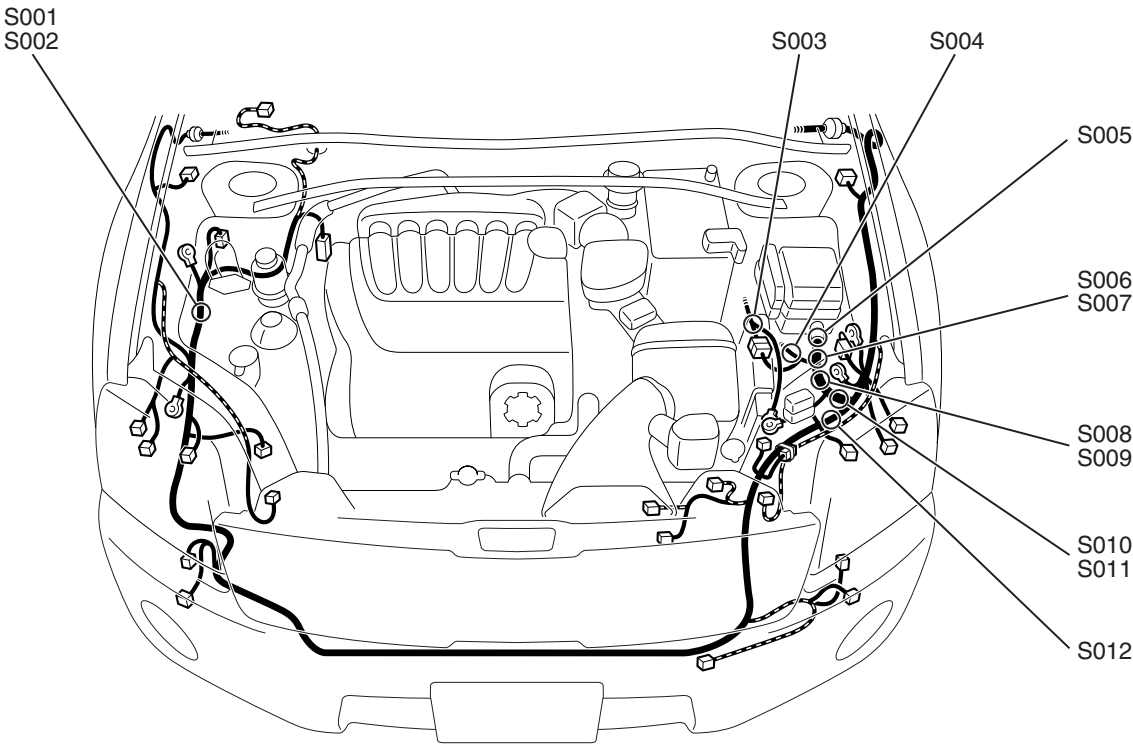
M1802000901464

This index shows the page numbers where the splice locations are.

SPLICE LOCATION NO.	PAGE	SPLICE LOCATION NO.	PAGE	SPLICE LOCATION NO.	PAGE	SPLICE LOCATION NO.	PAGE
S001	P.80B-4	S002	P.80B-4	S003	P.80B-4	S004	P.80B-4
S005	P.80B-4	S006	P.80B-4	S007	P.80B-4	S008	P.80B-4
S009	P.80B-4	S010	P.80B-4	S011	P.80B-4	S012	P.80B-4
S013	P.80B-4	S014	P.80B-4	S015	P.80B-4	S016	P.80B-4
S018	P.80B-4	S019	P.80B-4	S020	P.80B-4	S021	P.80B-4
S022	P.80B-4	S023	P.80B-4	S024	P.80B-4	S025	P.80B-4
S026	P.80B-4	S031	P.80B-4	S053	P.80B-6	S054	P.80B-6
S055	P.80B-6	S056	P.80B-6	S057	P.80B-6	S058	P.80B-6
S059	P.80B-6	S060	P.80B-6	S061	P.80B-6	S062	P.80B-6
S063	P.80B-6	S064	P.80B-6	S065	P.80B-6	S066	P.80B-6
S068	P.80B-6	S069	P.80B-6	S070	P.80B-6	S071	P.80B-6
S072	P.80B-6	S073	P.80B-6	S074	P.80B-6	S075	P.80B-6
S076	P.80B-6	S078	P.80B-6	S079	P.80B-6	S080	P.80B-6
S081	P.80B-6	S082	P.80B-6	S083	P.80B-6	S084	P.80B-6
S085	P.80B-6	S086	P.80B-6	S087	P.80B-6	S088	P.80B-7
S089	P.80B-7	S090	P.80B-7	S091	P.80B-7	S092	P.80B-7
S093	P.80B-7	S094	P.80B-7	S095	P.80B-7	S096	P.80B-7
S097	P.80B-7	S098	P.80B-7	S101	P.80B-7	S104	P.80B-7
S105	P.80B-7	S106	P.80B-7	S107	P.80B-7	S110	P.80B-6
S111	P.80B-6	S112	P.80B-6	S113	P.80B-6	S114	P.80B-6
S145	P.80B-5	S146	P.80B-5	S147	P.80B-5	S148	P.80B-5
S149	P.80B-5	S150	P.80B-5	S151	P.80B-5	S152	P.80B-5
S153	P.80B-5	S154	P.80B-5	S155	P.80B-5	S156	P.80B-5
S157	P.80B-5	S158	P.80B-5	S159	P.80B-5	S160	P.80B-5
S161	P.80B-5	S162	P.80B-5	S163	P.80B-5	S164	P.80B-5
S165	P.80B-5	S166	P.80B-5	S167	P.80B-5	S168	P.80B-4
S169	P.80B-4	S172	P.80B-6	S173	P.80B-6	S174	P.80B-6
S175	P.80B-6	S177	P.80B-6	S178	P.80B-8	S179	P.80B-8
S180	P.80B-8	S181	P.80B-8	S182	P.80B-8	S183	P.80B-6
S184	P.80B-6	S185	P.80B-6	S186	P.80B-6	S187	P.80B-6
S188	P.80B-6	S189	P.80B-6	S190	P.80B-8	S191	P.80B-6
S192	P.80B-6	S193	P.80B-6				

ENGINE COMPARTMENT

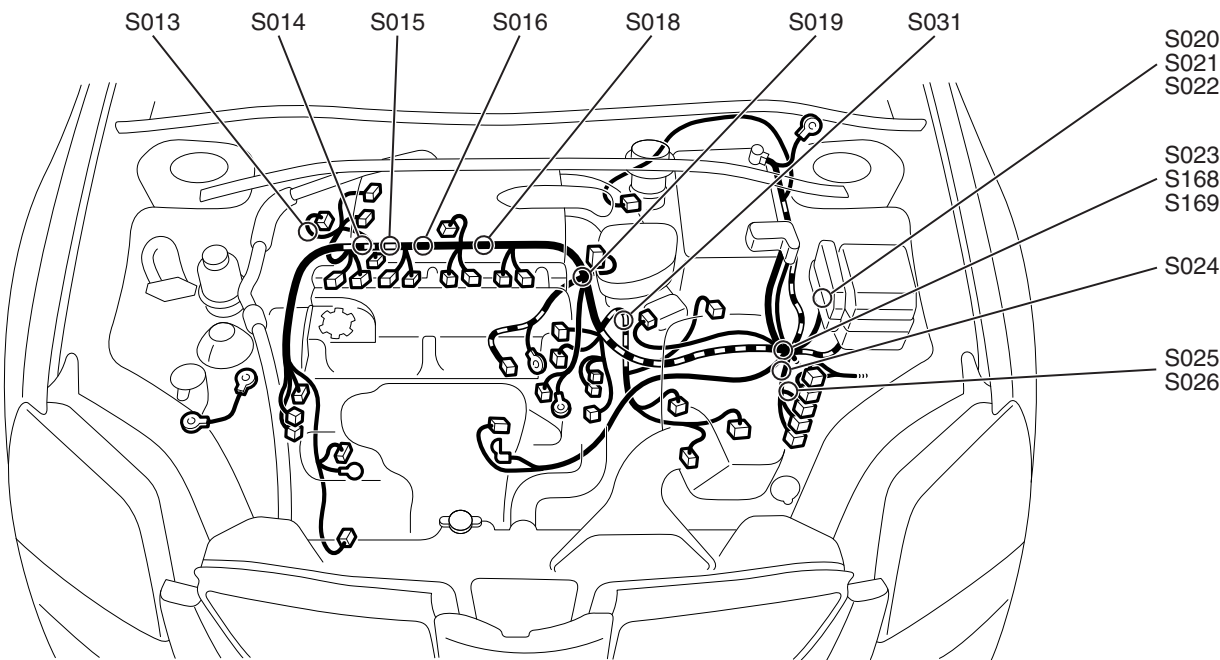
M1802000201056



AC808891AB

ENGINE AND TRANSAXLE <2.4L ENGINE>

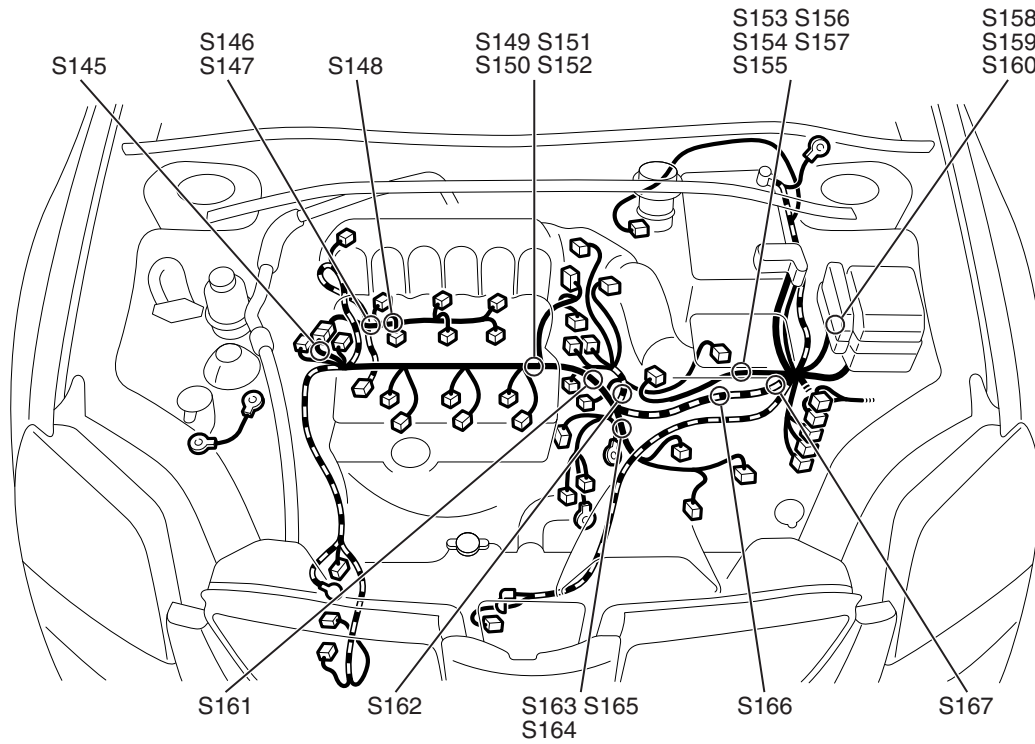
M1802001400908



AC600219AB

ENGINE AND TRANSAXLE <3.8L ENGINE>

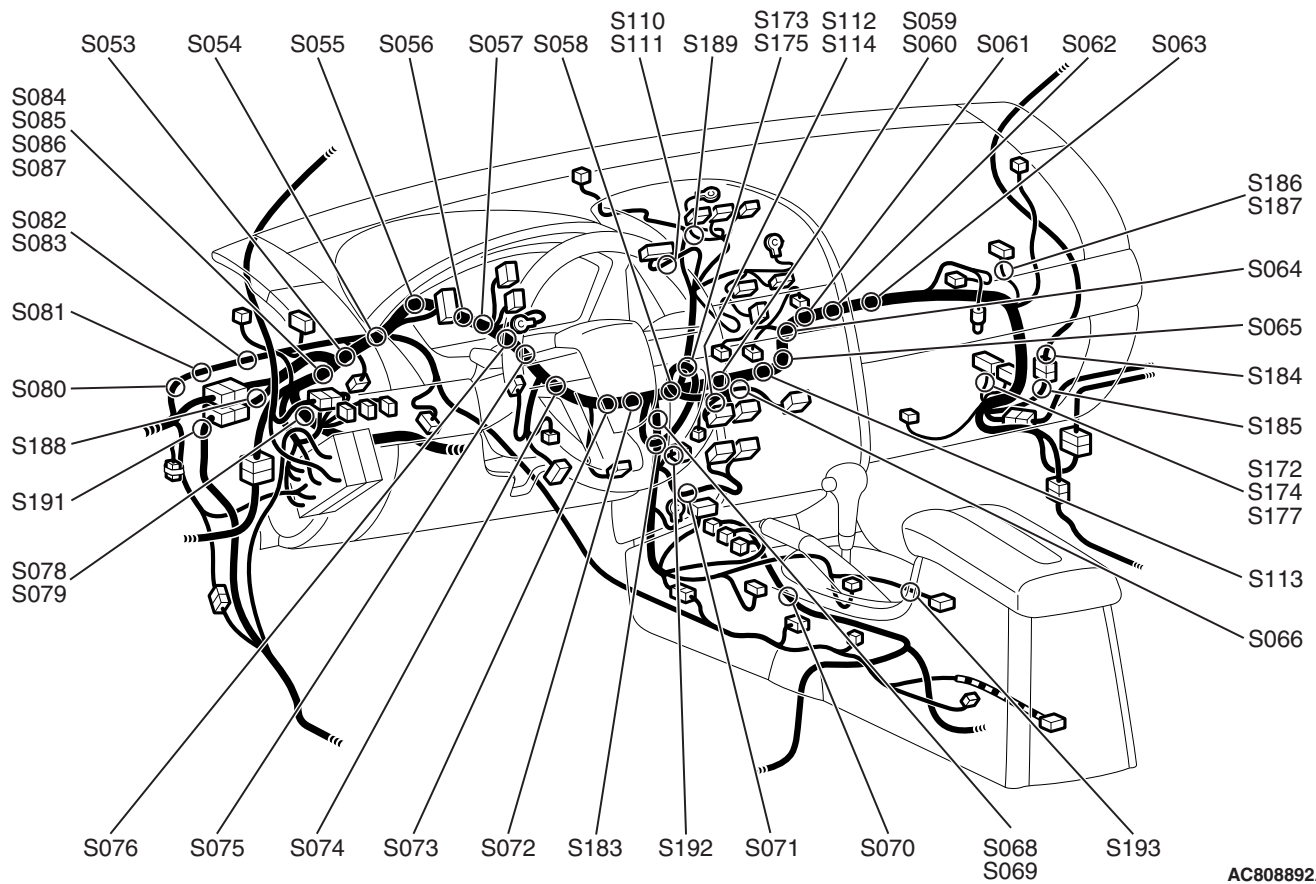
M1802001401086



AC708358AB

DASH PANEL

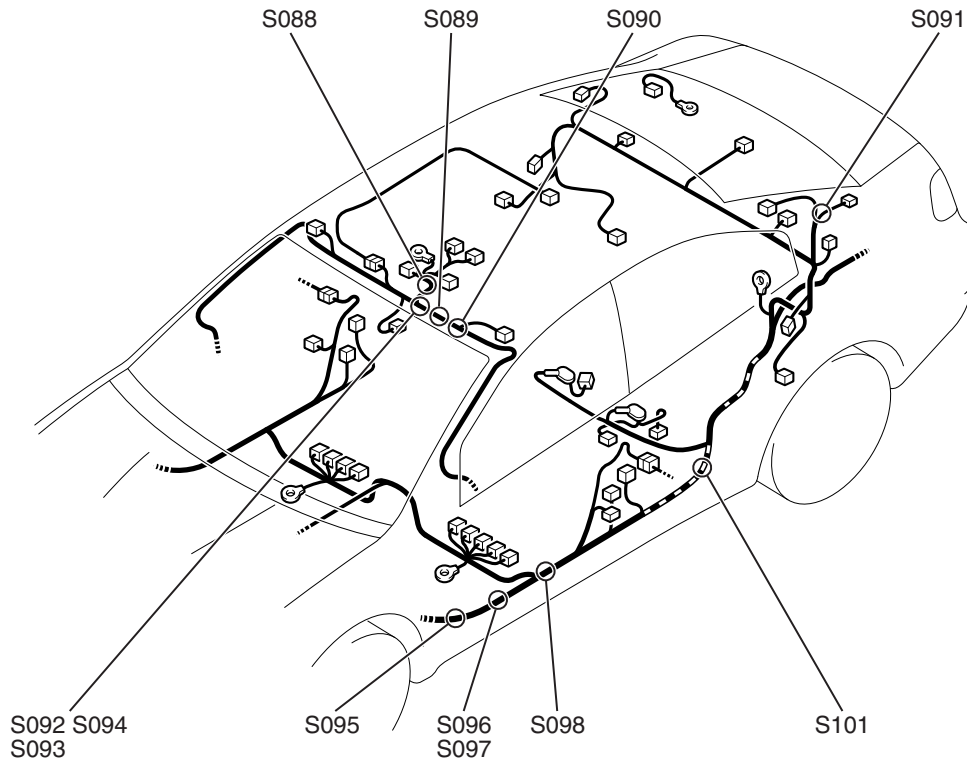
M1802000301280



AC808892AB

FLOOR AND ROOF

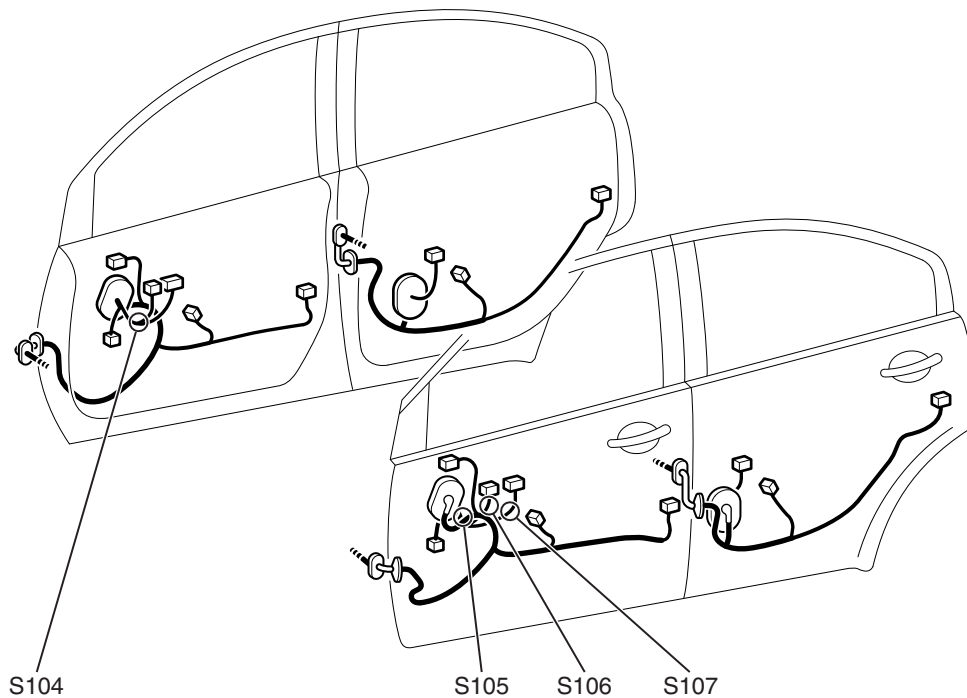
M1802001200960



AC712443AB

DOOR

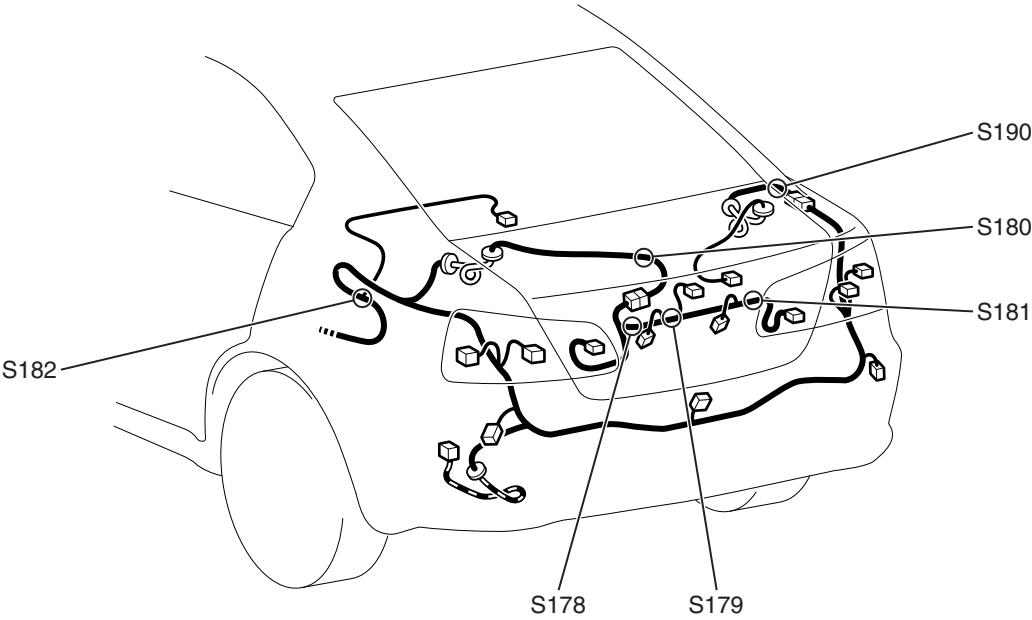
M1802000800798



AC704423 AB

LUGGAGE COMPARTMENT

M1802000700337



AC712444AB