

## GROUP 32

# POWER PLANT MOUNT

## CONTENTS

GENERAL DESCRIPTION.....	32-2	ENGINE ROLL STOPPER AND CENTERMEMBER .....	32-7
SPECIAL TOOL.....	32-3	REMOVAL AND INSTALLATION .....	32-7
ENGINE MOUNTING .....	32-4	CROSSMEMBER* .....	32-10
REMOVAL AND INSTALLATION .....	32-4	REMOVAL AND INSTALLATION .....	32-10
TRANSAXLE MOUNTING.....	32-5	INSPECTION.....	32-20
REMOVAL AND INSTALLATION .....	32-5	SPECIFICATIONS .....	32-21
		FASTENER TIGHTENING SPECIFICATIONS.....	32-21

## WARNINGS REGARDING SERVICING OF SUPPLEMENTAL RESTRAINT SYSTEM (SRS) EQUIPPED VEHICLES

**⚠ WARNING**

- *Improper service or maintenance of any component of the SRS, or any SRS-related component, can lead to personal injury or death to service personnel (from inadvertent firing of the air bag) or to the driver and passenger (from rendering the SRS inoperative).*
- *Service or maintenance of any SRS component or SRS-related component must be performed only at an authorized MITSUBISHI dealer.*
- *MITSUBISHI dealer personnel must thoroughly review this manual, and especially its GROUP 52B - Supplemental Restraint System (SRS) before beginning any service or maintenance of any component of the SRS or any SRS-related component.*

## NOTE

The SRS includes the following components: SRS air bag control unit, SRS warning light, front impact sensors, air bag module, side-airbag module, curtain air bag module, side impact sensors, seat belt pre-tensioners, clock spring, and interconnecting wiring. Other SRS-related components (that may have to be removed/installed in connection with SRS service or maintenance) are indicated in the table of contents by an asterisk (\*).

## GENERAL DESCRIPTION

M1321000100373

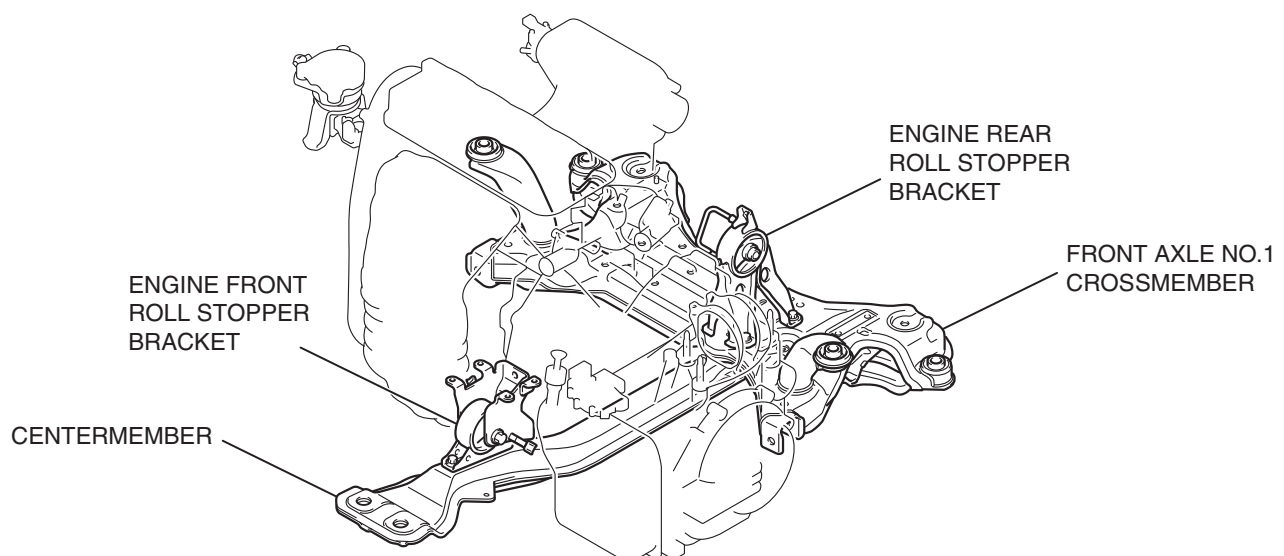
- The engine front mounting bracket is a dome-shaped fluid-filled mount for improved responsiveness during acceleration and more stable vehicle performance against road disturbances.
- The liquid-filled transaxle mounting body side bracket improves riding comfort by its refined insulator.
- A roll stopper bracket in the upper area limits engine rolling. Furthermore, large diameter insulator reduces idle vibration.

### CONSTRUCTION DIAGRAM

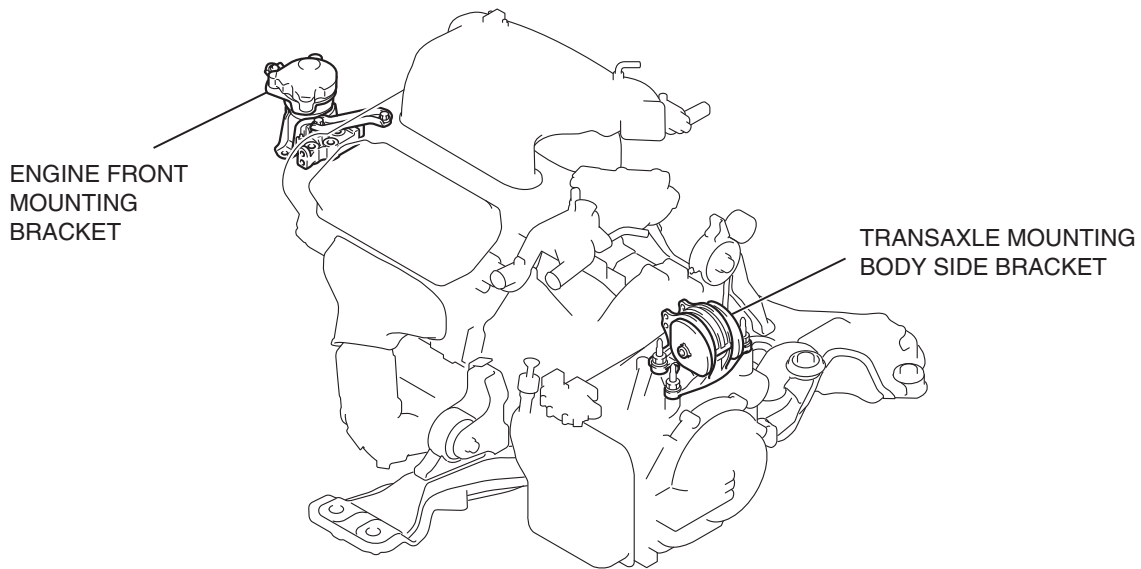
#### <2.4L ENGINE>



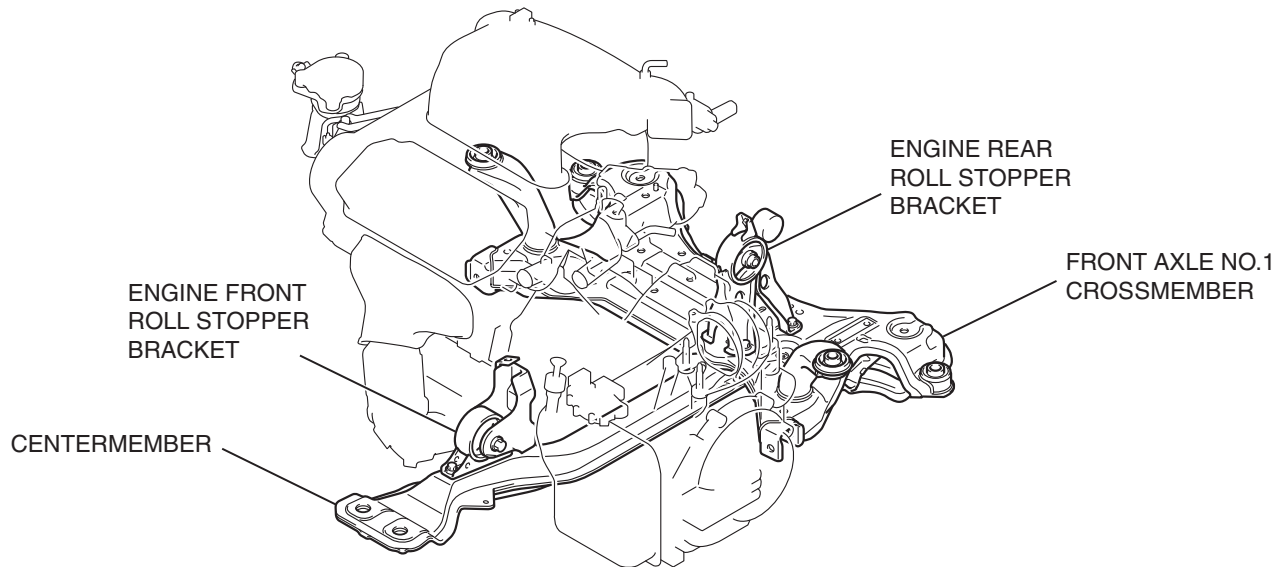
AC305857

AC305858  
AC305859AB

<3.8L ENGINE>



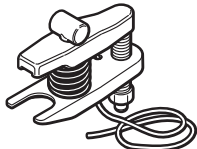
AC305860



AC305861  
AC305862AB

SPECIAL TOOL

M1321000600873

TOOL	TOOL NUMBER AND NAME	SUPERSESSION	APPLICATION
 <p>AC106827</p>	<p>MB991897 or MB992011 Ball joint remover</p>	<p>MB991113-01, MB990635-01 or General service tool</p>	<p>Knuckle and tie rod end ball joint disconnection</p> <p><i>NOTE: Steering linkage puller (MB990635 or MB991113) is also used to disconnect the knuckle and tie rod end ball joint.</i></p>

## ENGINE MOUNTING

## REMOVAL AND INSTALLATION

M1321001101766

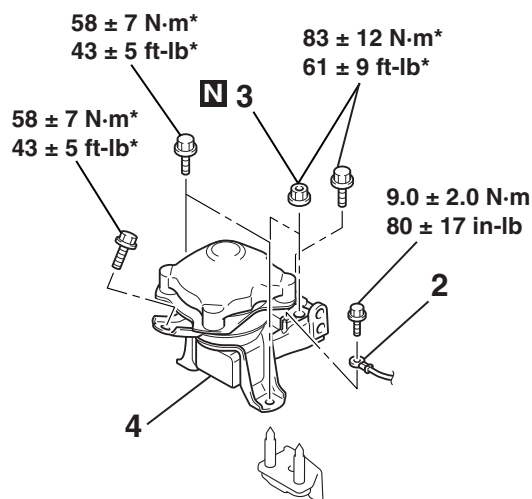
**CAUTION**

\*: Indicates parts which should be initially tightened, and then fully tightened after placing the vehicle horizontally and loading the full weight of the engine on the vehicle body.

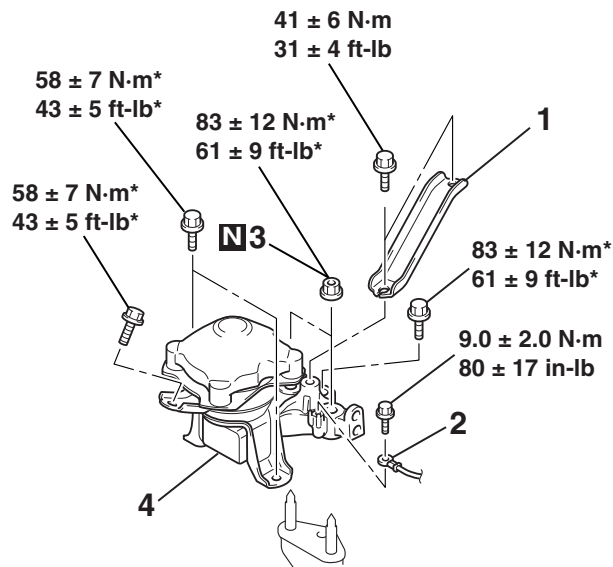
**Pre-removal Operation**

Raise the engine and transaxle assembly until its weight is not applied to the insulator, and support it securely.

## &lt;2.4L ENGINE&gt;



## &lt;3.8L ENGINE&gt;



AC307311AC

**REMOVAL STEPS**

1. ENGINE MOUNTING STAY <3.8L ENGINE> <<A>>
2. GROUNDING CABLE CONNECTION

**REMOVAL STEPS (Continued)**

- POWER STEERING OIL RESERVOIR
- 3. SELF-LOCKING NUTS
- 4. ENGINE FRONT MOUNTING BRACKET

## REMOVAL SERVICE POINT

<<A>> POWER STEERING OIL RESERVOIR  
REMOVAL

1. With the hose installed, remove the power steering oil reservoir from the vehicle. (Refer to GROUP 37, Power Steering Hoses P.37-59).
2. After removing the power steering oil reservoir, secure it with a cord in the location where the removal and installation of the engine front mounting bracket cannot be hindered.

# TRANSAXLE MOUNTING

## REMOVAL AND INSTALLATION

M1321001401400

### CAUTION

\*: Indicates parts which should be initially tightened, and then fully tightened after placing the vehicle horizontally and loading the full weight of the engine on the vehicle body.

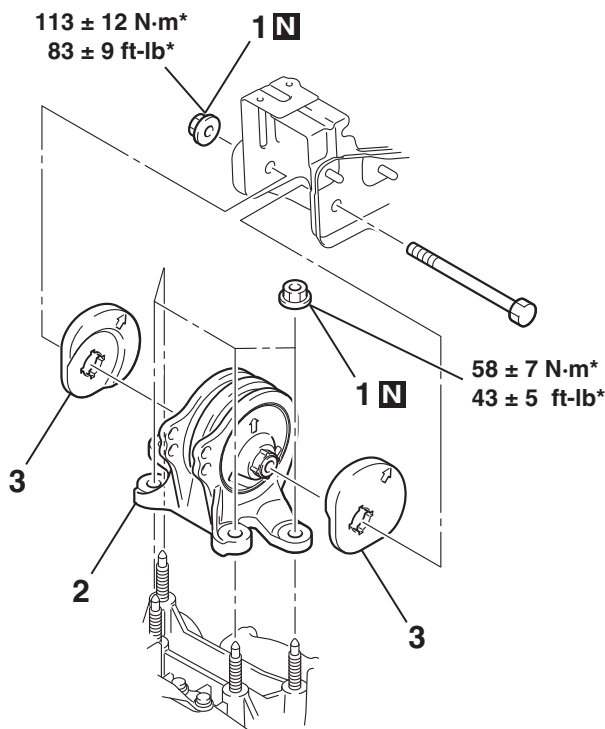
#### Pre-removal Operation

- Powertrain Control Module (PCM) Removal (2.4L ENGINE: Refer to GROUP 13A, Powertrain Control Module (PCM) P.13A-1236, 3.8L ENGINE: Refer to GROUP 13B, Powertrain Control Module (PCM) P.13B-1264).
- Air Cleaner Removal (Refer to GROUP 15, Air Cleaner P.15-4).
- Battery and Battery Tray Removal
- Centermember Removal (Refer to P.32-7).
- Engine Rear Roll Stopper Bracket Removal (Refer to P.32-7).
- Raise the engine and transaxle assembly until its weight is not applied to the insulator, and support it securely.

#### Post-installation Operation

- Engine Rear Roll Stopper Bracket Installation (Refer to P.32-7).
- Centermember Installation (Refer to P.32-7).
- Battery and Battery Tray Installation
- Air Cleaner Installation (Refer to GROUP 15, Air Cleaner P.15-4).
- Powertrain Control Module (PCM) Installation (2.4L ENGINE: Refer to GROUP 13A, Powertrain Control Module (PCM) P.13A-1236, 3.8L ENGINE: Refer to GROUP 13B, Powertrain Control Module (PCM) P.13B-1264).

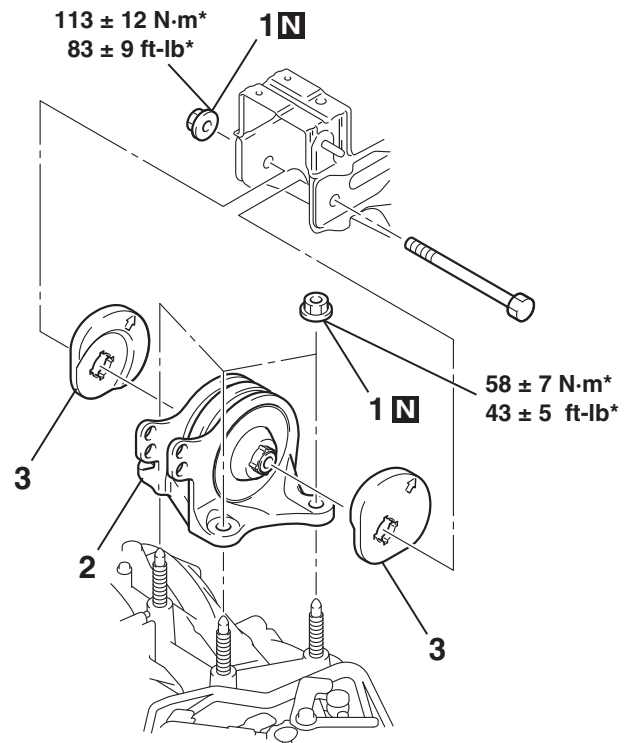
<4A/T>



#### REMOVAL STEPS

- SELF-LOCKING NUTS

<5A/T>



#### REMOVAL STEPS (Continued)

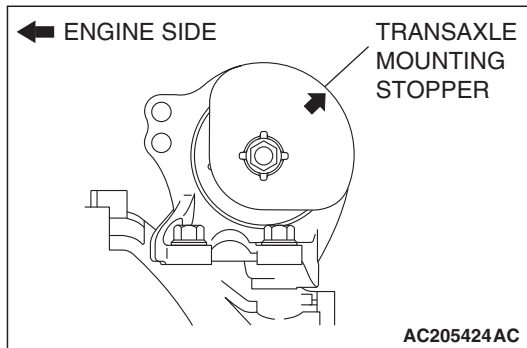
- TRANSAXLE MOUNTING BODY SIDE BRACKET
- TRANSAXLE MOUNTING STOPPER

AC601024 AC

## INSTALLATION SERVICE POINT

>>A<< TRANSAXLE MOUNTING STOPPER  
INSTALLATION

Install the transaxle mounting stopper so that its arrow points upward.



# ENGINE ROLL STOPPER AND CENTERMEMBER

## REMOVAL AND INSTALLATION

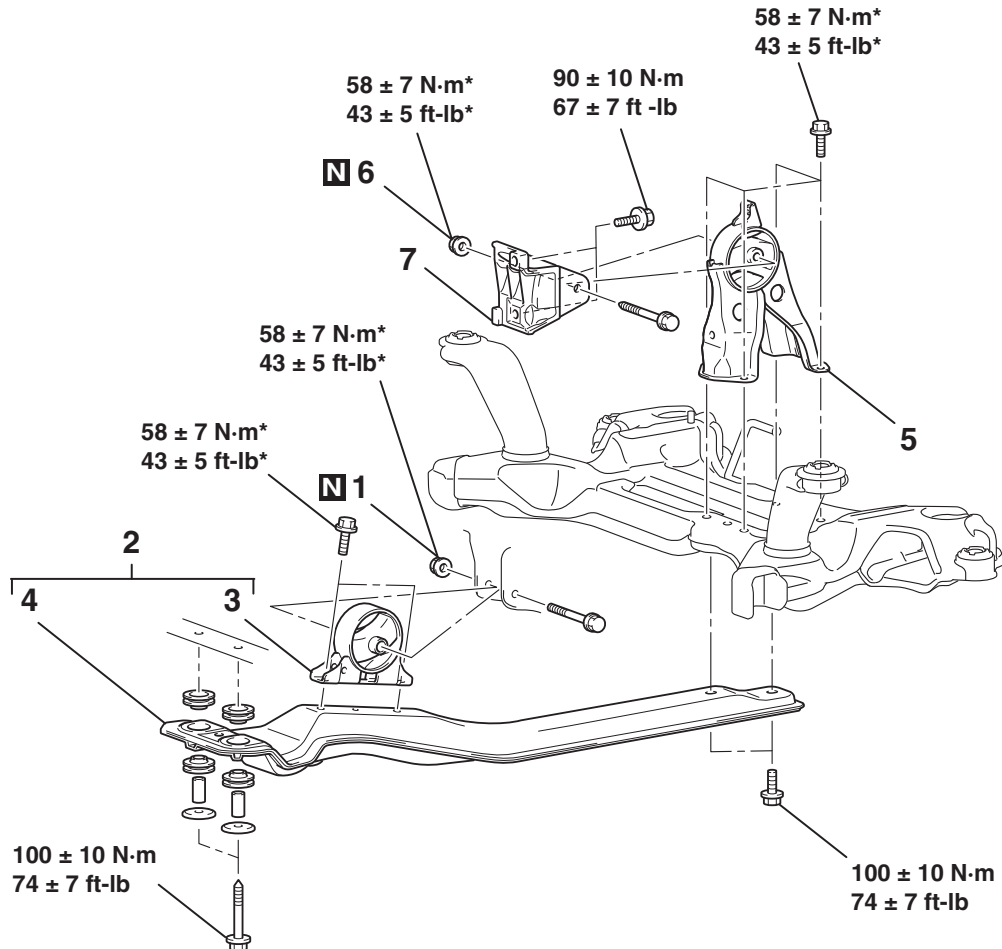
M1321002301462

### <2.4L ENGINE>

#### **CAUTION**

\*: Indicates parts which should be initially tightened, and then fully tightened after placing the vehicle horizontally and loading the full weight of the engine on the vehicle body.

**Pre-removal and Post-installation Operation**  
Side Under Cover Removal and Installation (Refer to GROUP 51, Under Cover [P.51-10](#)).



AC306905AC

#### FRONT ROLL STOPPER AND CENTERMEMBER REMOVAL STEPS

1. SELF-LOCKING NUT
2. ENGINE FRONT ROLL STOPPER BRACKET AND CENTERMEMBER
- >>A<< 3. ENGINE FRONT ROLL STOPPER BRACKET
4. CENTERMEMBER

#### REAR ROLL STOPPER REMOVAL STEPS

- FRONT AXLE NO.1 CROSSMEMBER ASSEMBLY (REFER TO [P.32-10](#)).
- 5. ENGINE REAR ROLL STOPPER BRACKET

**REAR ROLL STOPPER  
BRACKET REMOVAL STEPS**

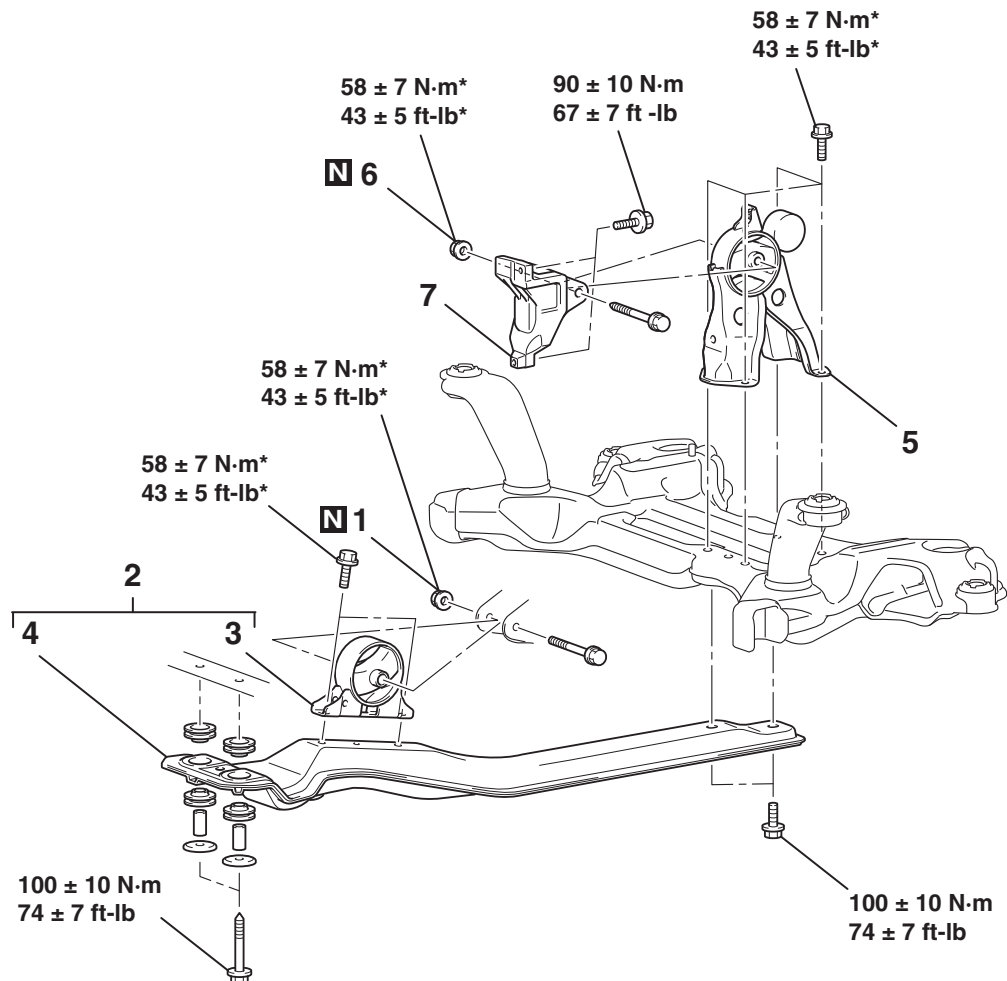
- FRONT NO.1 EXHAUST PIPE AND FRONT NO.2 EXHAUST PIPE CONNECTION (REFER TO GROUP 15, EXHAUST PIPE AND MAIN MUFFLER [P.15-22](#)).
- 1. SELF-LOCKING NUT
- 2. ENGINE FRONT ROLL STOPPER BRACKET AND CENTERMEMBER
- 6. SELF-LOCKING NUT
- 7. TRANSAXLE CASE REAR ROLL STOPPER BRACKET

**<3.8L ENGINE>****⚠ CAUTION**

\*: Indicates parts which should be initially tightened, and then fully tightened after placing the vehicle horizontally and loading the full weight of the engine on the vehicle body.

**Pre-removal and Post-installation Operation**

Side Under Cover Removal and Installation (Refer to GROUP 51, Under Cover [P.51-10](#)).





**FRONT ROLL STOPPER AND  
CENTERMEMBER REMOVAL  
STEPS**

1. SELF-LOCKING NUT
  2. ENGINE FRONT ROLL STOPPER  
BRACKET AND  
CENTERMEMBER
  - >>A<< 3. ENGINE FRONT ROLL STOPPER  
BRACKET
  4. CENTERMEMBER
- REAR ROLL STOPPER  
REMOVAL STEPS**
- FRONT AXLE NO.1  
CROSSMEMBER ASSEMBLY  
(REFER TO [P.32-10](#)).
  - 5. ENGINE REAR ROLL STOPPER  
BRACKET

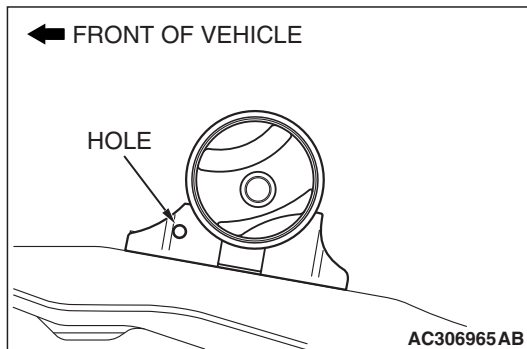
**REAR ROLL STOPPER  
BRACKET REMOVAL STEPS**

- FRONT NO.1 EXHAUST PIPE  
(REFER TO GROUP 15,  
EXHAUST PIPE AND MAIN  
MUFFLER [P.15-22](#)).
- 1. SELF-LOCKING NUT
- 2. ENGINE FRONT ROLL STOPPER  
BRACKET AND  
CENTERMEMBER
- 6. SELF-LOCKING NUT
- 7. TRANSAXLE CASE REAR ROLL  
STOPPER BRACKET

**INSTALLATION SERVICE POINT**

**>>A<< ENGINE FRONT ROLL STOPPER  
BRACKET INSTALLATION**

Install the engine front roll stopper bracket so that its hole  
points towards the front side of the vehicle.



# CROSSMEMBER

## REMOVAL AND INSTALLATION

M1321003201930

### <2.4L ENGINE>

**⚠ CAUTION**

- Before removing the steering wheel and air bag module assembly, always refer to GROUP 52B - Service Precautions (P.52B-26), Air bag Module and Clock Spring (P.52B-435). Also, set the front wheels so that they are facing straight forward, and remove the ignition key. If you fail to do this, the SRS clock spring will be damaged, causing the SRS air bag to be inoperative and serious injury.
- \*1: Indicates parts which should be initially tightened, and then fully tightened after placing the vehicle horizontally and loading the full weight of the engine on the vehicle body.
- \*2: Indicates parts which should be temporarily tightened, and then fully tightened with the vehicle on the ground in the unladen condition.

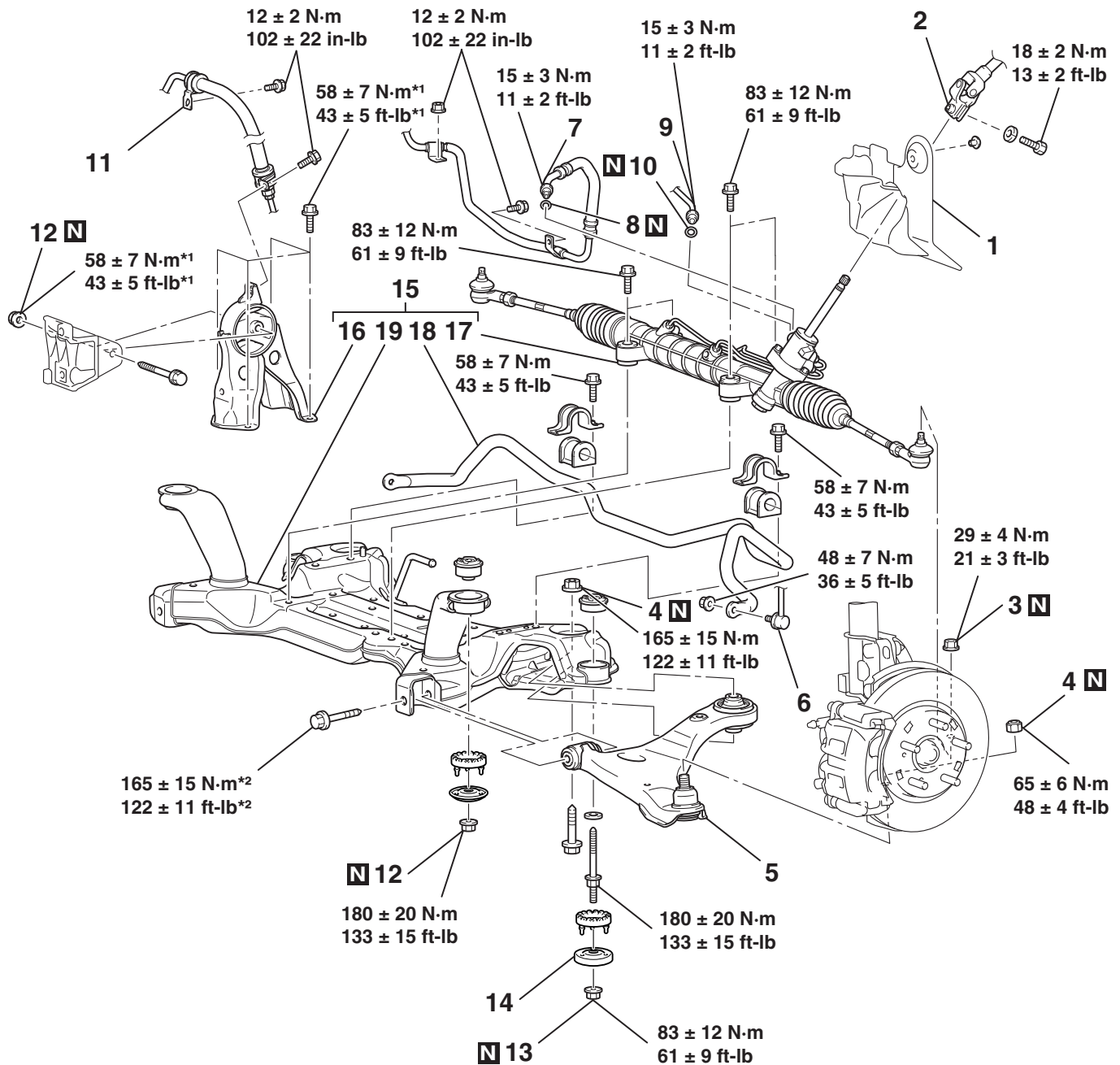
**Pre-removal Operation**

- Power Steering Fluid Draining (Refer to GROUP 37, On-vehicle Service –Fluid Replacement P.37-20).
- Air Bag Module and Steering Wheel Assembly Removal (Refer to GROUP 37, Steering Wheel P.37-28).
- Clock Spring Removal (Refer to GROUP 52B, Air Bag Module and Clock Spring P.52B-435).
- Floor Console Assembly Removal (Refer to GROUP 52A, Floor Console Assembly P.52A-21).
- Front Scuff Plate (LH) and Cowl Side Trim (LH) Removal (Refer to GROUP 52A, Trims P.52A-22).
- Trunk Lid Release Handle Cover Removal (Refer to GROUP 42, Trunk Lid P.42-66).
- Accelerator Stopper Removal (Refer to GROUP 17, Accelerator Pedal P.17-9).
- Front Floor Carpet Removal
- Centermember Removal (Refer to P.32-7).

**Post-installation Operation**

- Centermember Installation (Refer to P.32-7).
- Front Floor Carpet Installation
- Accelerator Stopper Installation (Refer to GROUP 17, Accelerator Pedal P.17-9).
- Trunk Lid Release Handle Cover Installation (Refer to GROUP 42, Trunk Lid P.42-66).
- Front Scuff Plate (LH) and Cowl Side Trim (LH) Installation (Refer to GROUP 52A, Trims P.52A-22).
- Floor Console Assembly Installation (Refer to GROUP 52A, Floor Console Assembly P.52A-21).
- Clock Spring Installation (Refer to GROUP 52B, Air Bag Module and Clock Spring P.52B-435).
- Steering Wheel Assembly and Air Bag Module Installation (Refer to GROUP 37, Steering Wheel P.37-28).
- Check the dust cover for cracks or damage by pushing it with your finger.
- Power Steering Fluid Supplying (Refer to GROUP 37, On-vehicle Service –Fluid Replacement P.37-20).
- Power Steering Fluid Line Bleeding (Refer to GROUP 37, On-vehicle Service –Power Steering System Air Bleeding P.37-21).
- Checking Steering Wheel Position with Wheels Straight Ahead.
- Front Wheel Alignment Adjustment (Refer to GROUP 33, On-vehicle Service –Front Wheel Alignment Check and Adjustment P.33-6).

<Vehicles without 18 inch wheel>



AC900033AB

**REMOVAL STEPS**

<<A>>

1. STEERING SHAFT PAD
2. STEERING COLUMN ASSEMBLY AND STEERING GEAR CONNECTION

<<B>>

3. SELF-LOCKING NUTS (CONNECTION FOR TIE ROD END)

<<B>>

4. SELF-LOCKING NUTS (CONNECTION FOR LOWER ARM BALL JOINT)
5. LOWER ARM ASSEMBLY
6. STABILIZER LINK CONNECTION
7. RETURN TUBE CONNECTION

<<C>>

>>D<<

>>D<<

**REMOVAL STEPS (Continued)**

8. O-RING
9. PRESSURE HOSE CONNECTION
10. O-RING
11. PRESSURE HOSE CLAMP
- FRONT NO.2 EXHAUST PIPE HANGER (REFER TO GROUP 15, EXHAUST PIPE AND MAIN MUFFLER P.15-22).
12. SELF-LOCKING NUTS
13. SELF-LOCKING NUTS
14. FRONT AXLE CROSSMEMBER MOUNTING PLATE

<<E>>	>>B<<	15.	ENGINE REAR ROLL STOPPER BRACKET, STEERING GEAR AND LINKAGE, STABILIZER BAR AND FRONT AXLE NO.1 CROSSMEMBER ASSEMBLY
		16.	ENGINE REAR ROLL STOPPER BRACKET
		17.	STEERING GEAR AND LINKAGE
	>>A<<	18.	STABILIZER BAR
		19.	FRONT AXLE NO.1 CROSSMEMBER

Diagram illustrating the assembly of a vehicle chassis component, showing various parts and their torque specifications:

- 12 ± 2 N·m** (102 ± 22 in-lb)
- 15 ± 3 N·m** (11 ± 2 ft-lb)
- 18 ± 2 N·m** (13 ± 2 ft-lb)
- 58 ± 7 N·m\*1** (43 ± 5 ft-lb\*1)
- 15 ± 3 N·m** (11 ± 2 ft-lb)
- 83 ± 12 N·m** (61 ± 9 ft-lb)
- 12 N**
- 58 ± 7 N·m\*1** (43 ± 5 ft-lb\*1)
- 83 ± 12 N·m** (61 ± 9 ft-lb)
- 15**
- 16 19 18 17**
- 58 ± 7 N·m** (43 ± 5 ft-lb)
- 58 ± 7 N·m** (43 ± 5 ft-lb)
- 48 ± 7 N·m** (36 ± 5 ft-lb)
- 29 ± 4 N·m** (21 ± 3 ft-lb)
- 165 ± 15 N·m\*2** (122 ± 11 ft-lb\*2)
- 165 ± 15 N·m** (122 ± 11 ft-lb)
- 180 ± 20 N·m** (133 ± 15 ft-lb)
- 180 ± 20 N·m** (133 ± 15 ft-lb)
- 100 ± 10 N·m** (74 ± 7 ft-lb)
- 83 ± 12 N·m** (61 ± 9 ft-lb)
- 65 ± 6 N·m** (48 ± 4 ft-lb)

<b>REMOVAL STEPS</b>		<b>REMOVAL STEPS (Continued)</b>	
<<A>>	1. STEERING SHAFT PAD	>>C<<	• FRONT NO.2 EXHAUST PIPE
	2. STEERING COLUMN ASSEMBLY AND STEERING GEAR CONNECTION		HANGER (REFER TO GROUP 15, EXHAUST PIPE AND MAIN MUFFLER <a href="#">P.15-22</a> ).
<<B>>	3. SELF-LOCKING NUTS (CONNECTION FOR TIE ROD END)	<<D>> >>C<<	12. SELF-LOCKING NUTS
<<B>>	4. SELF-LOCKING NUTS (CONNECTION FOR LOWER ARM BALL JOINT)	<<E>> >>B<<	13. SELF-LOCKING NUTS
	5. LOWER ARM ASSEMBLY		14. FRONT AXLE CROSSMEMBER STAY
	6. STABILIZER LINK CONNECTION		15. ENGINE REAR ROLL STOPPER BRACKET, STEERING GEAR AND LINKAGE, STABILIZER BAR AND FRONT AXLE NO.1
	7. RETURN TUBE CONNECTION		CROSSMEMBER ASSEMBLY
	8. O-RING		16. ENGINE REAR ROLL STOPPER BRACKET
	9. PRESSURE HOSE CONNECTION		17. STEERING GEAR AND LINKAGE
	10. O-RING		18. STABILIZER BAR
	11. PRESSURE HOSE CLAMP	>>A<<	19. FRONT AXLE NO.1 CROSSMEMBER

**Required Special Tool:**

- MB991897 or MB992011: Ball Joint Remover

## &lt;3.8L ENGINE&gt;

**⚠ CAUTION**

- Before removing the steering wheel and air bag module assembly, always refer to GROUP 52B - Service Precautions (P.52B-26), Air bag Module and Clock Spring (P.52B-435). Also, set the front wheels so that they are facing straight forward, and remove the ignition key. If you fail to do this, the SRS clock spring will be damaged, causing the SRS air bag to be inoperative and serious injury.
- \*1: Indicates parts which should be initially tightened, and then fully tightened after placing the vehicle horizontally and loading the full weight of the engine on the vehicle body.
- \*2: Indicates parts which should be temporarily tightened, and then fully tightened with the vehicle on the ground in the unladen condition.

**Pre-removal Operation**

- Power Steering Fluid Draining (Refer to GROUP 37, On-vehicle Service –Fluid Replacement P.37-20).
- Air Bag Module and Steering Wheel Assembly Removal (Refer to GROUP 37, Steering Wheel P.37-28).
- Clock Spring Removal (Refer to GROUP 52B, Air Bag Module and Clock Spring P.52B-435).
- Floor Console Assembly Removal (Refer to GROUP 52A, Floor Console Assembly P.52A-21).
- Front Scuff Plate (LH) and Cowl Side Trim (LH) Removal (Refer to GROUP 52A, Trims P.52A-22).
- Trunk Lid Release Handle Cover Removal (Refer to GROUP 42, Trunk Lid P.42-66).
- Accelerator Stopper Removal (Refer to GROUP 17, Accelerator Pedal P.17-9).
- Front Floor Carpet Removal
- Centermember Removal (Refer to P.32-7).

**Post-installation Operation**

- Centermember Installation (Refer to P.32-7).
- Front Floor Carpet Installation
- Accelerator Stopper Installation (Refer to GROUP 17, Accelerator Pedal P.17-9).
- Trunk Lid Release Handle Cover Installation (Refer to GROUP 42, Trunk Lid P.42-66).
- Front Scuff Plate (LH) and Cowl Side Trim (LH) Installation (Refer to GROUP 52A, Trims P.52A-22).
- Floor Console Assembly Installation (Refer to GROUP 52A, Floor Console Assembly P.52A-21).
- Clock Spring Installation (Refer to GROUP 52B, Air Bag Module and Clock Spring P.52B-435).
- Steering Wheel Assembly and Air Bag Module Installation (Refer to GROUP 37, Steering Wheel P.37-28).
- Check the dust cover for cracks or damage by pushing it with your finger.
- Power Steering Fluid Supplying (Refer to GROUP 37, On-vehicle Service –Fluid Replacement P.37-20).
- Power Steering Fluid Line Bleeding (Refer to GROUP 37, On-vehicle Service –Power Steering System Air Bleeding P.37-21).
- Checking Steering Wheel Position with Wheels Straight Ahead.
- Front Wheel Alignment Adjustment (Refer to GROUP 33, On-vehicle Service –Front Wheel Alignment Check and Adjustment P.33-6).



## REMOVAL STEPS (Continued)

- ### 3. SELF-LOCKING NUTS (CONNECTION FOR TIE ROD END)

## TSB Revision



REMOVAL STEPS (Continued)		REMOVAL STEPS (Continued)	
<<B>>	4. SELF-LOCKING NUTS (CONNECTION FOR LOWER ARM BALL JOINT)	<<E>> >>B<<	15. ENGINE REAR ROLL STOPPER BRACKET, STEERING GEAR AND LINKAGE, STABILIZER BAR AND FRONT AXLE NO.1 CROSSMEMBER ASSEMBLY
	5. LOWER ARM ASSEMBLY		16. ENGINE REAR ROLL STOPPER BRACKET
	6. STABILIZER LINK CONNECTION		17. STEERING GEAR AND LINKAGE PROTECTOR
	7. RETURN TUBE CONNECTION		18. STEERING GEAR AND LINKAGE
	8. O-RING		19. STABILIZER BAR
	9. PRESSURE HOSE CONNECTION		20. FRONT AXLE NO.1 CROSSMEMBER
	10. O-RING		
	11. PRESSURE HOSE CLAMP		
	12. SELF-LOCKING NUTS	>>A<<	
>>C<<	13. SELF-LOCKING NUTS		
<<D>> >>C<<	14. FRONT AXLE CROSSMEMBER STAY		

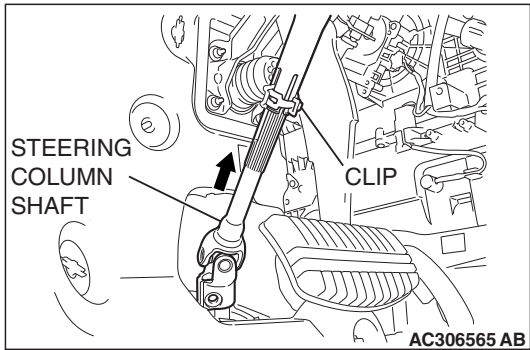
Required Special Tool:

- MB991897 or MB992011: Ball Joint Remover

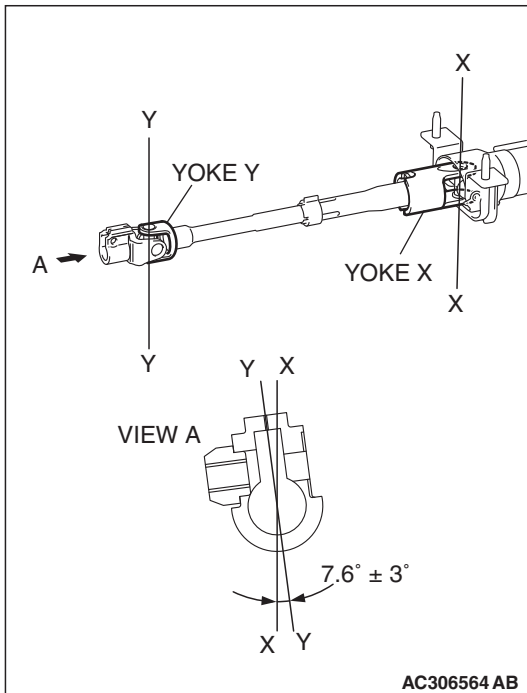
REMOVAL SERVICE POINTS

<<A>> STEERING COLUMN ASSEMBLY AND  
STEERING GEAR DISCONNECTION

Pinch the steering column shaft clip with pliers, and pull up the shaft in the direction shown to disengage the steering column assembly.







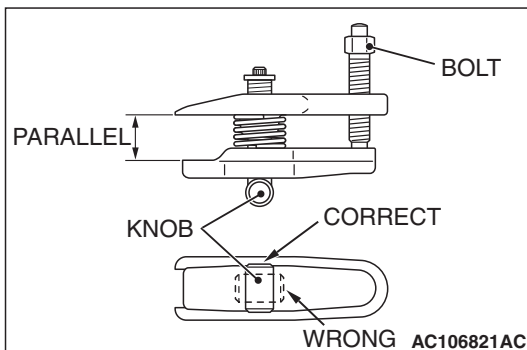
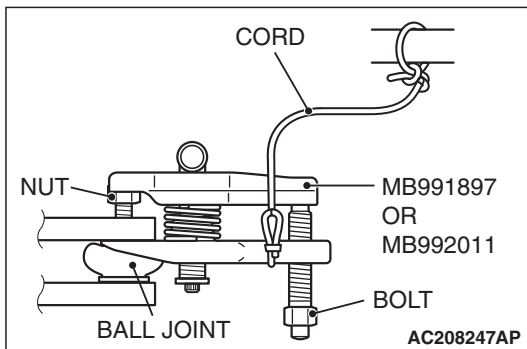
**NOTE:** If the steering column shaft is removed accidentally, remove the steering column assembly and be sure to insert the steering column shaft into the steering column as shown in the figure.

## <<B>> SELF-LOCKING NUTS (CONNECTION FOR TIE ROD END AND LOWER ARM BALL JOINT) REMOVAL

### ⚠ CAUTION

- Do not remove the nut from ball joint. Loosen it and use the special tool to avoid possible damage to ball joint threads.
- Hang the special tool with a cord to prevent it from falling.

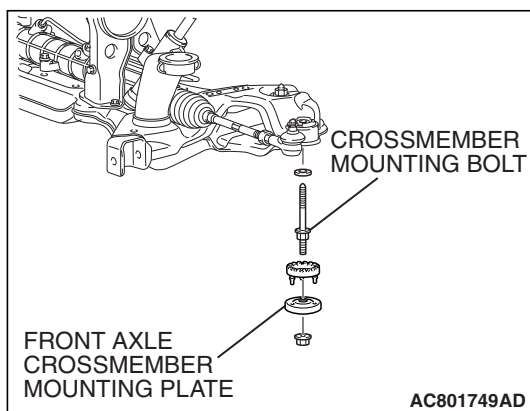
1. Replace the self locking nut for lower arm ball joint with a regular nut, because the original one is a little bit large to install special tool MB991897 or MB992011. Install the special tool as shown in the figure.



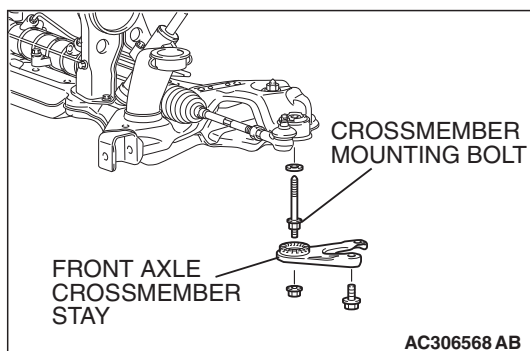
2. Turn the bolt and knob as necessary to make the jaws of special tool parallel, tighten the bolt by hand and confirm that the jaws are still parallel.

**NOTE:** When adjusting the jaws in parallel, make sure the knob is in the position shown in the figure.

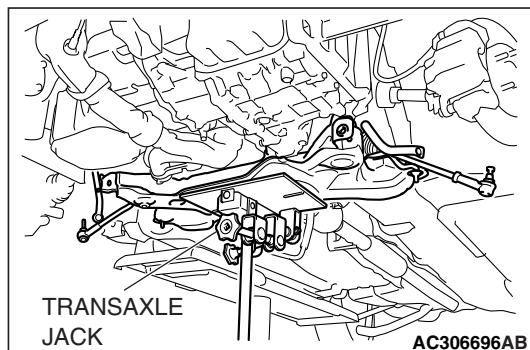
3. Tighten the bolt with a wrench to disconnect the lower arm ball joint, tie rod end and remove the self-locking nut.

**<<C>> FRONT AXLE CROSSMEMBER  
MOUNTING PLATE REMOVAL**

The crossmember mounting bolts need not be unscrewed when the front axle crossmember mounting plate is replaced. However, the bolts may become loosened when the front axle crossmember mounting plate is removed. Retighten the bolts to  $180 \pm 20 \text{ N} \cdot \text{m}$  ( $133 \pm 15 \text{ ft-lb}$ ).

**<<D>> FRONT AXLE CROSSMEMBER STAY  
REMOVAL**

The crossmember mounting bolts need not be unscrewed when the front axle crossmember stay is replaced. However, the bolts may become loosened when the front axle crossmember stay is removed. Retighten the bolts to  $180 \pm 20 \text{ N} \cdot \text{m}$  ( $133 \pm 15 \text{ ft-lb}$ ).

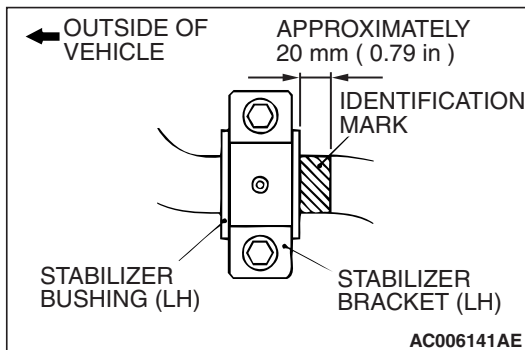
**<<E>> ENGINE REAR ROLL STOPPER BRACKET,  
STEERING GEAR AND LINKAGE, STABILIZER  
BAR AND FRONT AXLE NO.1 CROSSMEMBER  
ASSEMBLY REMOVAL**

Support the front axle number 1 crossmember with a transaxle jack, and then remove the crossmember mounting nuts and bolts.

## INSTALLATION SERVICE POINTS

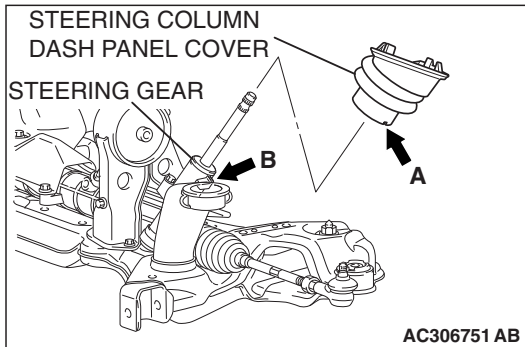
### >>A<< STABILIZER BAR INSTALLATION

Align the stabilizer bar identification mark with the right end of the bushing (LH).



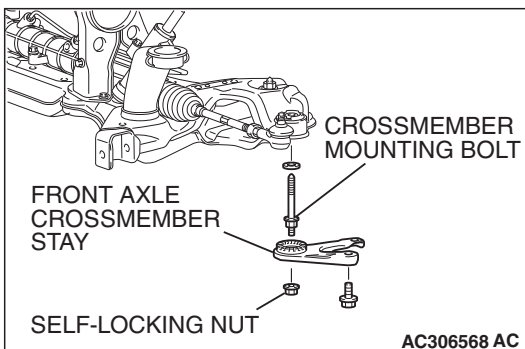
### >>B<< ENGINE REAR ROLL STOPPER BRACKET, STEERING GEAR AND LINKAGE, STABILIZER BAR AND FRONT AXLE NO.1 CROSSMEMBER ASSEMBLY INSTALLATION

Align the steering column dash panel cover notch (arrow A) with the steering gear lug (arrow B), and install the engine rear roll stopper bracket, power steering gear and linkage, stabilizer bar and front axle number 1 crossmember assembly.



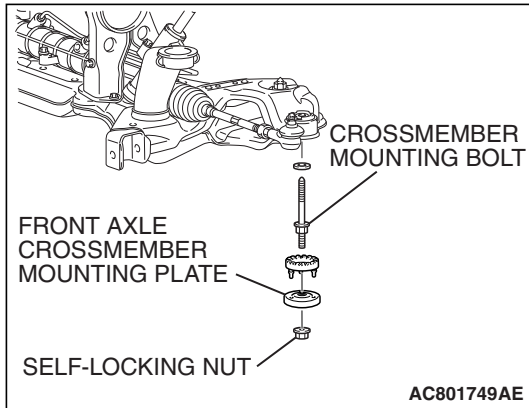
### >>C<< FRONT AXLE CROSSMEMBER STAY/SELF-LOCKING NUTS INSTALLATION

Ensure that the crossmember mounting bolts have been tightened to  $180 \pm 20 \text{ N} \cdot \text{m}$  ( $133 \pm 15 \text{ ft} \cdot \text{lb}$ ), and then install the front axle crossmember stay with the self-locking nut.



**>>D<< FRONT AXLE CROSSMEMBER  
MOUNTING PLATE/SELF-LOCKING NUTS  
INSTALLATION**

Ensure that the crossmember mounting bolts have been tightened to  $180 \pm 20 \text{ N} \cdot \text{m}$  ( $133 \pm 15 \text{ ft-lb}$ ), and then install the front axle crossmember mounting plate with the self-locking nut.

**INSPECTION**

M1321003300194

- Check the crossmembers for cracks or damage.

## SPECIFICATIONS

## FASTENER TIGHTENING SPECIFICATIONS

M1321004100591

ITEM		SPECIFICATION
<b>Crossmember</b>		
Engine rear roll stopper bracket bolt and nut		58 ± 7 N· m (43 ± 5 ft-lb)
Front axle crossmember mounting plate nut <2.4L ENGINE* <sup>1</sup> >		83 ± 12 N· m (61 ± 9 ft-lb)
Front axle crossmember stay bolt <2.4L ENGINE* <sup>2</sup> and 3.8L ENGINE>		100 ± 10 N· m (74 ± 7 ft-lb)
Front axle crossmember stay nut <2.4L ENGINE* <sup>2</sup> and 3.8L ENGINE>		83 ± 12 N· m (61 ± 9 ft-lb)
Front axle No.1 crossmember bolt and nut		180 ± 20 N· m (133 ± 15 ft-lb)
Lower arm assembly bolt		165 ± 15 N· m (122 ± 11 ft-lb)
Lower arm assembly nut (flange nut, self-locking)	M14	165 ± 15 N· m (122 ± 11 ft-lb)
Lower arm assembly nut (nut, self-locking)	M14	65 ± 6 N· m (48 ± 4 ft-lb)
Pressure hose clamp bolt and nut		12 ± 2 N· m (102 ± 22 in-lb)
Pressure hose nut		15 ± 3 N· m (11 ± 2 ft-lb)
Return tube clamp bolt and nut		12 ± 2 N· m (102 ± 22 in-lb)
Return tube nut		15 ± 3 N· m (11 ± 2 ft-lb)
Stabilizer bracket bolt		58 ± 7 N· m (43 ± 5 ft-lb)
Stabilizer link nut		48 ± 7 N· m (36 ± 5 ft-lb)
Steering column assembly bolt		18 ± 2 N· m (13 ± 2 ft-lb)
Steering gear and linkage bolt		83 ± 12 N· m (61 ± 9 ft-lb)
Steering gear and linkage protector bolt <3.8L ENGINE>		12 ± 2 N· m (102 ± 22 in-lb)
Tie rod end nut		29 ± 4 N· m (21 ± 3 ft-lb)
<b>Engine mounting</b>		
Engine front mounting bracket bolt	M10	58 ± 7 N· m (43 ± 5 ft-lb)
Engine front mounting bracket bolt and nut	M12	83 ± 12 N· m (61 ± 9 ft-lb)
Engine mounting stay bolt <3.8L ENGINE>		41 ± 6 N· m (31 ± 4 ft-lb)
Grounding cable bolt		9.0 ± 2.0 N· m (80 ± 17 in-lb)
<b>Engine roll stopper and centermember</b>		
Centermember bolt		100 ± 10 N· m (74 ± 7 ft-lb)
Engine front roll stopper bracket bolt and nut		58 ± 7 N· m (43 ± 5 ft-lb)
Engine rear roll stopper bracket bolt and nut		58 ± 7 N· m (43 ± 5 ft-lb)
Transaxle case rear roll stopper bracket bolt		90 ± 10 N· m (67 ± 7 ft-lb)
<b>Transaxle mounting</b>		
Transaxle mounting body side bracket nut (body side)		113 ± 12 N· m (83 ± 9 ft-lb)
Transaxle mounting body side bracket nut (transaxle side)		58 ± 7 N· m (43 ± 5 ft-lb)

## NOTE:

- \*<sup>1</sup>: Vehicles without 18 inch wheel
- \*<sup>2</sup>: Vehicles with 18 inch wheel

---

## NOTES