

GROUP 80

CONFIGURATION DIAGRAMS

CONTENTS

OVERALL CONFIGURATION DIAGRAM

OVERALL WIRING DIAGRAM <LHD>	80-2
OVERALL WIRING DIAGRAM <RHD> . . .	80-3

ENGINE COMPARTMENT

ENGINE COMPARTMENT <LHD>	80-4
ENGINE COMPARTMENT <RHD EXCEPT FOR HONG KONG AND SINGAPORE> . .	80-5
ENGINE COMPARTMENT <VEHICLES FOR HONG KONG AND SINGAPORE>	80-6

ENGINE AND TRANSMISSION

ENGINE AND TRANSMISSION <LHD> . . .	80-7
ENGINE AND TRANSMISSION <RHD> . .	80-9

DASH PANEL

DASH PANEL <LHD>	80-11
DASH PANEL <RHD EXCEPT FOR HONG KONG AND SINGAPORE>	80-15
DASH PANEL <VEHICLES FOR HONG KONG AND SINGAPORE>	80-19

FLOOR

FLOOR <LHD>	80-23
FLOOR <RHD EXCEPT FOR HONG KONG AND SINGAPORE>	80-24
FLOOR <VEHICLES FOR HONG KONG AND SINGAPORE>	80-25

ROOF

ROOF <LHD>	80-26
ROOF < RHD >	80-27

DOOR

DOOR <LHD>	80-28
DOOR <RHD>	80-29

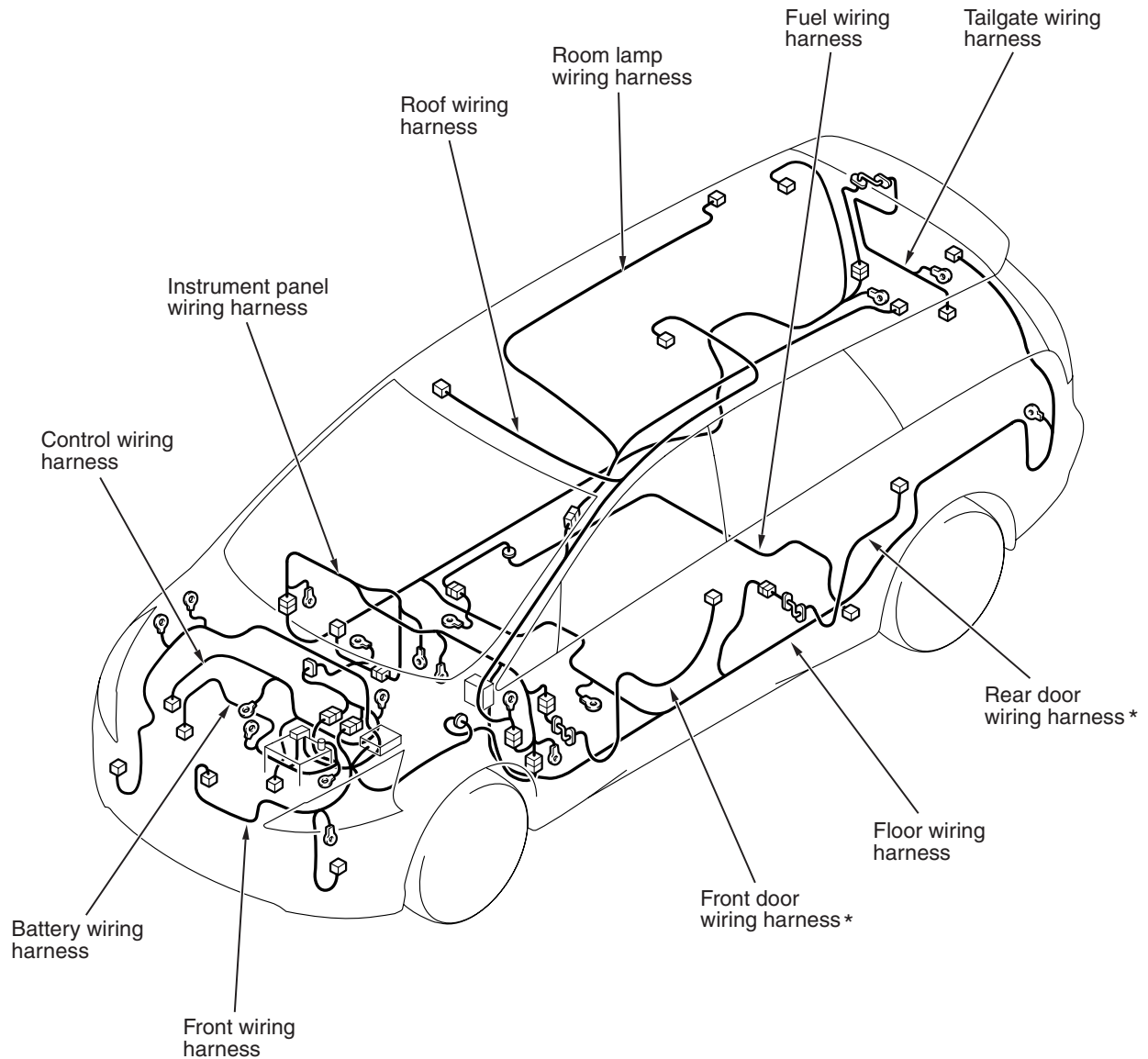
TAILGATE

TAILGATE <EXCEPT VEHICLES FOR HONG KONG AND SINGAPORE>	80-30
TAILGATE <VEHICLES FOR HONG KONG AND SINGAPORE>	80-31

OVERALL CONFIGURATION DIAGRAM

OVERALL WIRING DIAGRAM <LHD>

M1801000101249



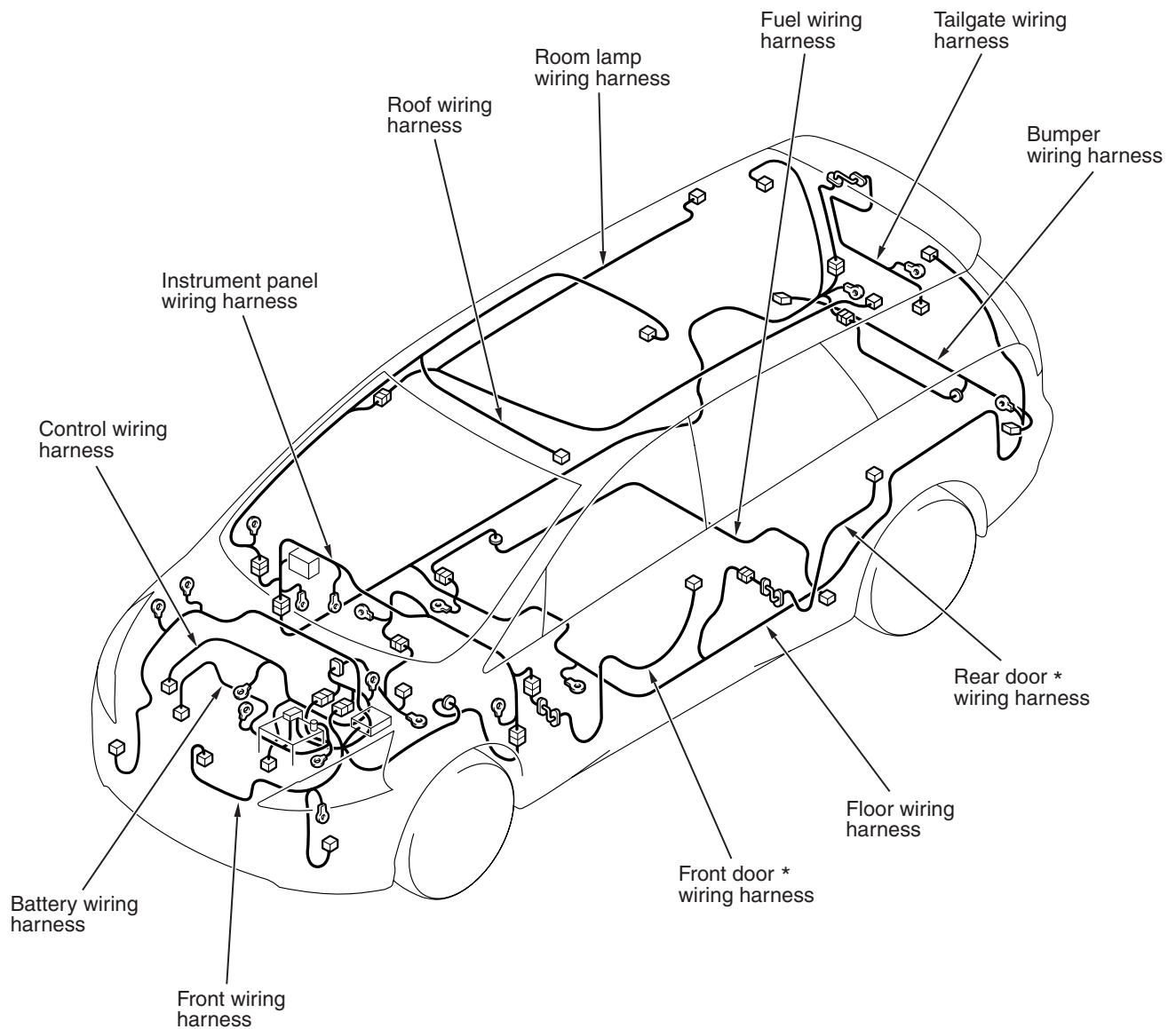
AC501441AB

NOTE:

1. This illustration shows only major wiring harnesses.
2. *: also equipped at the right side.

OVERALL WIRING DIAGRAM <RHD>

M1801000101250



AC501357 AB

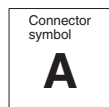
NOTE:

1. This illustration shows only major wiring harnesses.
2. *: also equipped at the right side.

ENGINE COMPARTMENT

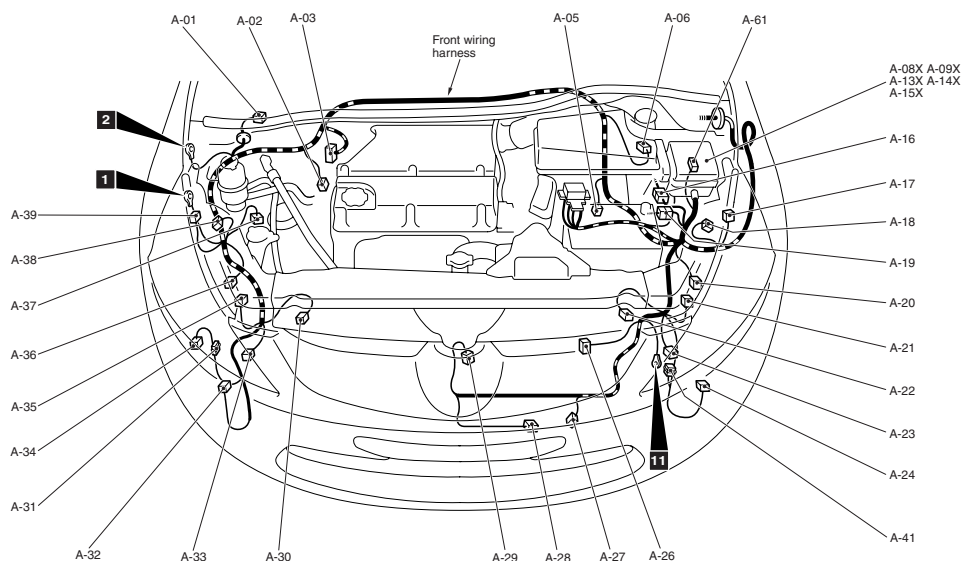
ENGINE COMPARTMENT <LHD>

M1801000302398



Connector colour code

B : Black
BR : Brown
G : Green
GR : Grey
L : Blue
None : Milk white
O : Orange
R : Red
V : Violet
Y : Yellow
PU : Purple

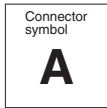


AC501442AB

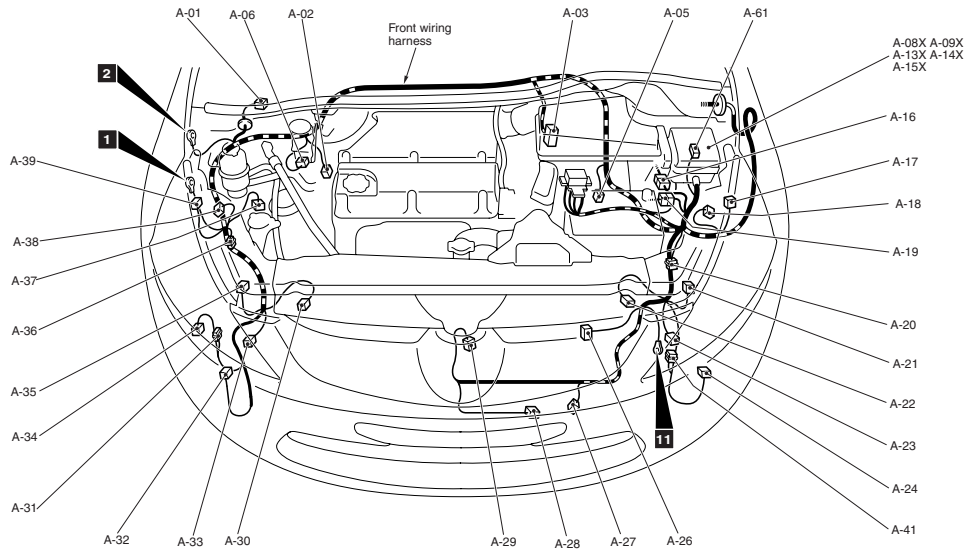
A-01	(5-GR)	Windshield wiper motor	A-23	(2-B)	Front turn-signal lamp (LH)
A-02	(2-GR)	Wheel speed sensor (Front: RH)	A-24	(2-B)	Front fog lamp (LH)
A-03	(26-B)	ABS-ECU	A-26	(3-GR)	Fan controller
A-05	(2-GR)	Wheel speed sensor (Front: LH)	A-27	(1-B)	Horn (LO)
A-06	(2-GR)	Brake fluid level indicator switch	A-28	(2-B)	Ambient temperature sensor
A-08X	(4)	Front fog lamp relay	A-29	(1-B)	Horn (HI)
A-09X	(4)	Horn relay	A-30	(2-Y)	Front impact sensor (RH)
A-13X	(4)	Fan control relay	A-31	(2-GR)	No connection
A-14X	(11)	Front-ECU	A-32	(2-B)	Front fog lamp (RH)
A-15X	(11)	Front-ECU	A-33	(2-B)	Front turn-signal lamp (RH)
A-16	(12-B)	Front wiring harness and control wiring harness combination	A-34	(2-GR)	Washer motor
A-17	(2-GR)	Position lamp (LH)	A-35	(2-GR)	Headlamp (HI: RH)
A-18	(2-B)	Headlamp (LO: LH)	A-36	(3-GR)	Headlamp levelling unit (RH)
A-19	(4-B)	Front wiring harness and battery wiring harness combination	A-37	(3-B)	A/C pressure sensor
A-20	(3-GR)	Headlamp levelling unit (LH)	A-38	(2-B)	Headlamp (LO: RH)
A-21	(2-GR)	Headlamp (HI: LH)	A-39	(2-GR)	Position lamp (RH)
A-22	(2-Y)	Front impact sensor (LH)	A-41	(4-B)	Spare connector (For trailer)
			A-61	(6)	J/C (CAN 3)

ENGINE COMPARTMENT <RHD EXCEPT FOR HONG KONG AND SINGAPORE>

M1801000302406



Connector colour code
B : Black
BR : Brown
G : Green
GR : Grey
L : Blue
None : Milk white
O : Orange
R : Red
V : Violet
Y : Yellow
PU : Purple

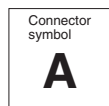


AC501445AB

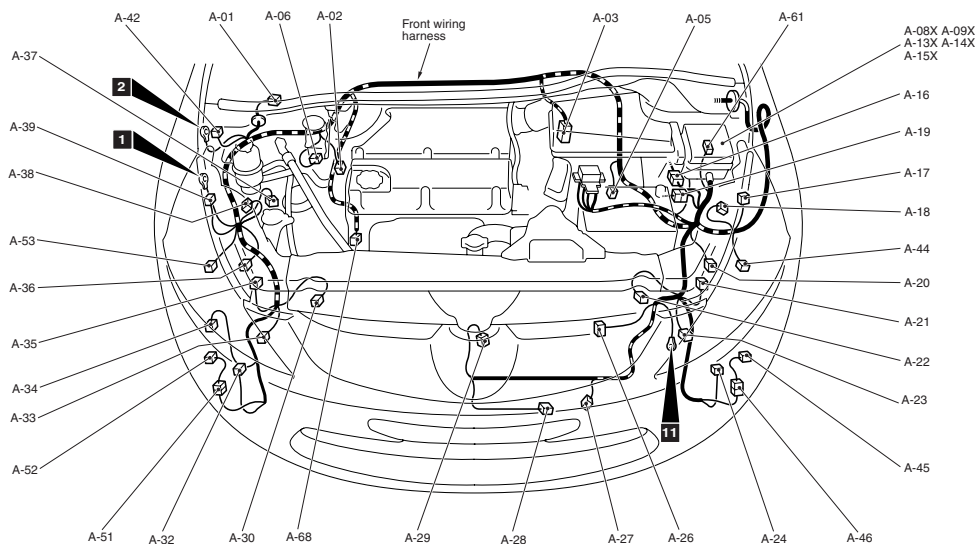
A-01	(5-GR)	Windshield wiper motor	A-23	(2-B)	Front turn-signal lamp (LH)
A-02	(2-GR)	Wheel speed sensor (Front: RH)	A-24	(2-B)	Front fog lamp (LH)
A-03	(26-B)	ABS-ECU	A-26	(3-GR)	Fan controller
A-05	(2-GR)	Wheel speed sensor (Front: LH)	A-27	(1-B)	Horn (LO)
A-06	(2-GR)	Brake fluid level indicator switch	A-28	(2-B)	Ambient temperature sensor
A-08X	(4)	Front fog lamp relay	A-29	(1-B)	Horn (HI)
A-09X	(4)	Horn relay	A-30	(2-Y)	Front impact sensor (RH)
A-13X	(4)	Fan control relay	A-31	(2-GR)	No connection
A-14X	(11)	Front-ECU	A-32	(2-B)	Front fog lamp (RH)
A-15X	(11)	Front-ECU	A-33	(2-B)	Front turn-signal lamp (RH)
A-16	(12-B)	Front wiring harness and control wiring harness combination	A-34	(2-GR)	Washer motor
A-17	(2-GR)	Position lamp (LH)	A-35	(2-GR)	Headlamp (HI: RH)
A-18	(2-B)	Headlamp (LO: LH)	A-36	(3-GR)	No connection
A-19	(4-B)	Front wiring harness and battery wiring harness combination	A-37	(3-B)	A/C pressure sensor
A-20	(3-GR)	No connection	A-38	(2-B)	Headlamp (LO: RH)
A-21	(2-GR)	Headlamp (HI: LH)	A-39	(2-GR)	Position lamp (RH)
A-22	(2-Y)	Front impact sensor (LH)	A-41	(4-B)	Spare connector (For trailer)
			A-61	(6)	J/C (CAN 3)

ENGINE COMPARTMENT <VEHICLES FOR HONG KONG AND SINGAPORE>

M1801000302547



Connector colour code
 B : Black
 BR : Brown
 G : Green
 GR : Grey
 L : Blue
 None : Milk white
 O : Orange
 R : Red
 V : Violet
 Y : Yellow
 PU : Purple



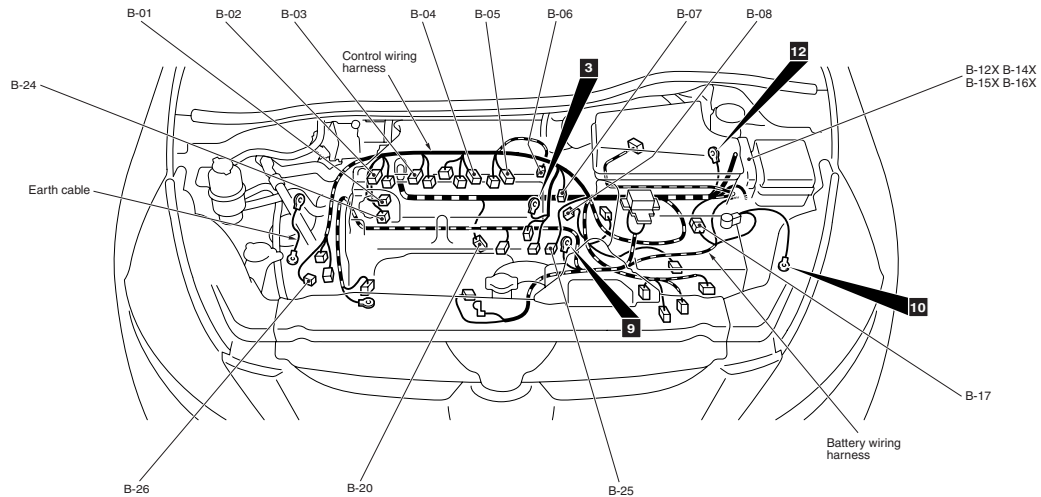
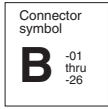
AC503089AB

A-01	(5-GR)	Windshield wiper motor	A-29	(1-B)	Horn (HI)
A-02	(2-GR)	Wheel speed sensor (Front: RH)	A-30	(2-Y)	Front impact sensor (RH)
A-03	(26)	ABS-ECU	A-32	(2-B)	Front fog lamp (RH)
A-05	(2-GR)	Wheel speed sensor (Front: LH)	A-33	(2-B)	Front turn-signal lamp (RH)
A-06	(2-GR)	Brake fluid level indicator switch	A-34	(2-GR)	Washer motor
A-08X	(4)	Front fog lamp relay	A-35	(2-GR)	Headlamp (HI: RH)
A-09X	(4)	Horn relay	A-36	(3-GR)	Headlamp levelling unit (RH)
A-13X	(4)	Fan control relay	A-37	(3-B)	A/C pressure sensor
A-14X	(11)	Front-ECU	A-38	(2-B)	Headlamp (LO: RH) <Halogen type>
A-15X	(11)	Front-ECU	A-39	(2-GR)	Position lamp (RH)
A-16	(12-B)	Front wiring harness and control wiring harness combination	A-42	(2-B)	Hood switch
A-17	(2-GR)	Position lamp (LH)	A-44	(2-GR)	Discharge-ECU (LH)
A-18	(2-B)	Headlamp (LO: LH) <Halogen type>	A-45	(2-B)	Corner sensor (Front: LH)
A-19	(4-B)	Front wiring harness and battery wiring harness combination	A-46	(2-B)	Front wiring harness and front corner sensor sub wiring harness (LH) combination
A-20	(3-GR)	Headlamp levelling unit (LH)	A-51	(2-B)	Front wiring harness and front corner sensor sub wiring harness (RH) combination
A-21	(2-GR)	Headlamp (HI: LH)	A-52	(2-B)	Corner sensor (Front: RH)
A-22	(2-Y)	Front impact sensor (LH)	A-53	(2-GR)	Discharge-ECU (RH)
A-23	(2-B)	Front turn-signal lamp (LH)	A-61	(6)	J/C (CAN 3)
A-24	(2-B)	Front fog lamp (LH)	A-68	(3-B)	Height sensor (Front) <Vehicles with headlamp automatic levelling system>
A-26	(3-GR)	Fan controller			
A-27	(1-B)	Horn (LO)			
A-28	(2-B)	Ambient temperature sensor			

ENGINE AND TRANSMISSION

ENGINE AND TRANSMISSION <LHD>

M1801000401864



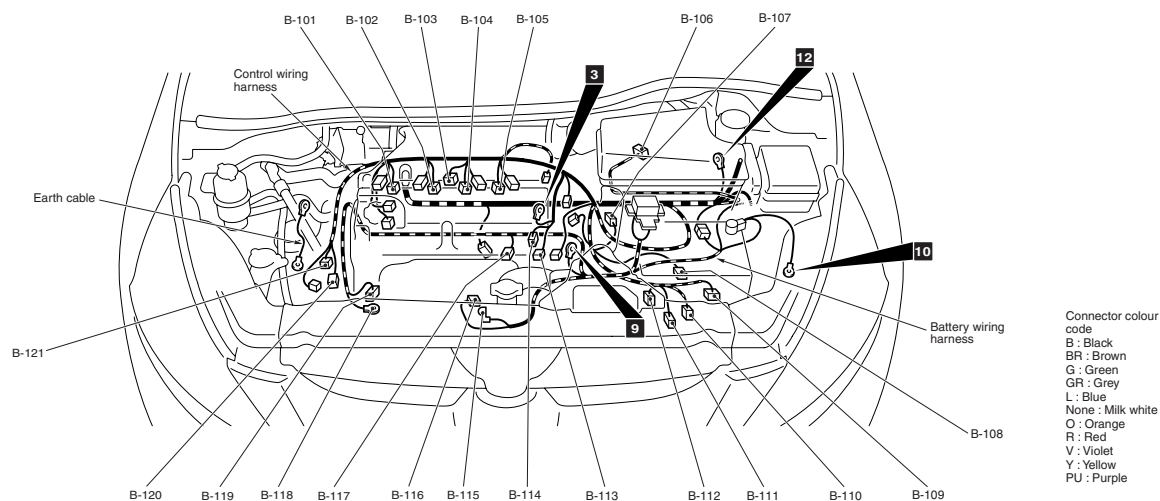
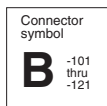
Connector colour code
B : Black
BR : Brown
G : Green
GR : Grey
L : Blue
None : Milk white
O : Orange
R : Red
V : Violet
Y : Yellow
PU : Purple

ACS01448AE

B-01	(2-B)	Purge control solenoid valve
B-02	(3-GR)	Ignition coil 1
B-03	(3-GR)	Ignition coil 2
B-04	(3-GR)	Ignition coil 3
B-05	(3-GR)	Ignition coil 4
B-06	(6-B)	Electronic-controlled throttle valve
B-07	(2-B)	Engine oil control valve
B-08	(2-B)	Engine coolant temperature sensor
B-12X	(4)	Throttle valve control servo relay

B-14X	(4)	A/T control relay
B-15X	(4)	Engine control relay
B-16X	(4)	A/C compressor relay
B-17	(8-B)	Control wiring harness and battery wiring harness combination
B-20	(3-B)	Power steering fluid pressure sensor
B-24	(2-GR)	Detonation sensor
B-25	(4-GR)	Cylinder 2, 3 heated oxygen sensor
B-26	(4-GR)	Cylinder 1, 4 heated oxygen sensor

ENGINE AND TRANSMISSION <LHD> (CONTINUED)

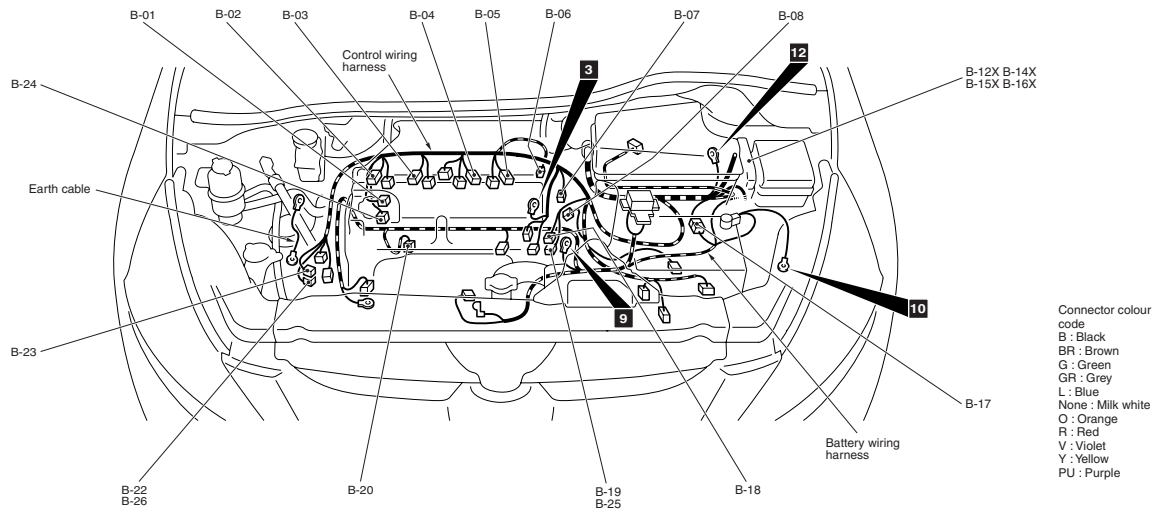
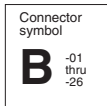


AC501448AF

B-101 (2-GR)	Injector 1	B-112 (3-B)	Input shaft speed sensor <A/T>
B-102 (2-GR)	Injector 2	B-113 (1-B)	Capacitor
B-103 (6-GR)	Exhaust gas recirculation valve	B-114 (3-B)	Camshaft position sensor
B-104 (2-GR)	Injector 3	B-115 (1)	Starter
B-105 (2-GR)	Injector 4	B-116 (1-B)	Starter
B-106 (4-GR)	Air flow sensor	B-117 (1-B)	Engine oil pressure switch
B-107 (3-B)	Vehicle speed sensor <M/T>	B-118 (1)	Alternator
B-108 (3-GR)	Output shaft speed sensor <A/T>	B-119 (4-GR)	Alternator
B-109 (10-GR)	A/T control solenoid valve assembly	B-120 (1-B)	A/C compressor assembly
B-110 (2-B)	Back-up lamp switch <M/T>	B-121 (3-GR)	Crank angle sensor
B-111 (10-B)	Inhibitor switch <A/T>		

ENGINE AND TRANSMISSION <RHD>

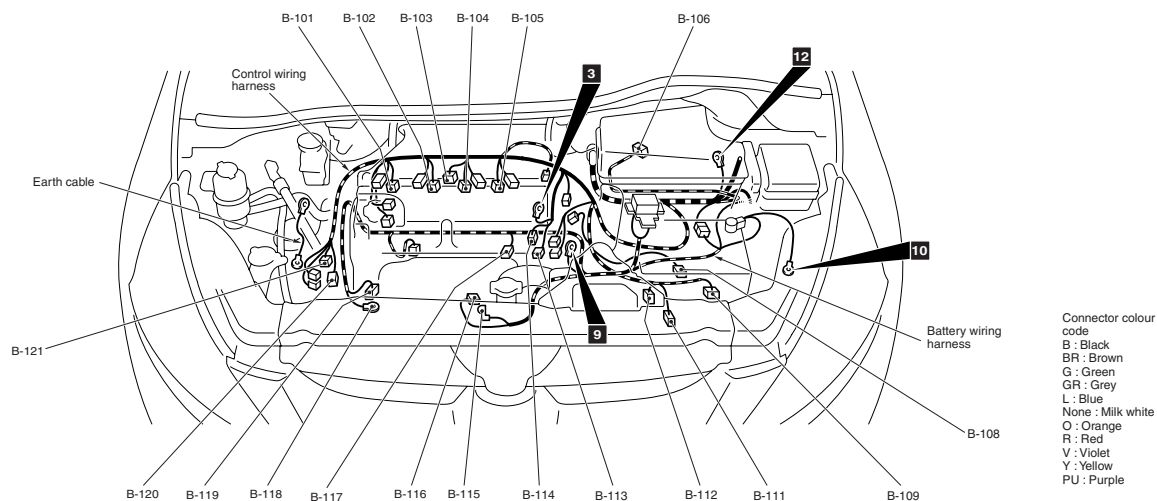
M1801000401875



AC501451AB

B-01	(2-B)	Purge control solenoid valve	B-20	(3-B)	Power steering fluid pressure sensor
B-02	(3-GR)	Ignition coil 1	B-22	(4-GR)	Cylinder 1, 4 heated oxygen sensor (Front) <Vehicles for Hong Kong, Singapore, Australia and New Zealand>
B-03	(3-GR)	Ignition coil 2			
B-04	(3-GR)	Ignition coil 3	B-23	(4-B)	Cylinder 1, 4 heated oxygen sensor (Rear) <Vehicles for Hong Kong, Singapore, Australia and New Zealand>
B-05	(3-GR)	Ignition coil 4			
B-06	(6-B)	Electronic-controlled throttle valve	B-24	(2-GR)	Detonation sensor
B-07	(2-B)	Engine oil control valve	B-25	(4-GR)	Cylinder 2, 3 heated oxygen sensor <Except vehicles for Hong Kong, Singapore, Australia and New Zealand>
B-08	(2-B)	Engine coolant temperature sensor			
B-12X	(4)	Throttle valve control servo relay	B-26	(4-GR)	Cylinder 1, 4 heated oxygen sensor <Except vehicles for Hong Kong, Singapore, Australia and New Zealand>
B-14X	(4)	A/T control relay			
B-15X	(4)	Engine control relay			
B-16X	(4)	A/C compressor relay			
B-17	(8-B)	Control wiring harness and battery wiring harness combination			
B-18	(4-B)	Cylinder 2, 3 heated oxygen sensor (Rear) <Vehicles for Hong Kong, Singapore, Australia and New Zealand>			
B-19	(4-GR)	Cylinder 2, 3 heated oxygen sensor (Front) <Vehicles for Hong Kong, Singapore, Australia and New Zealand>			

ENGINE AND TRANSMISSION <RHD> (CONTINUED)

Connector
symbol**B** -101
thru
-121

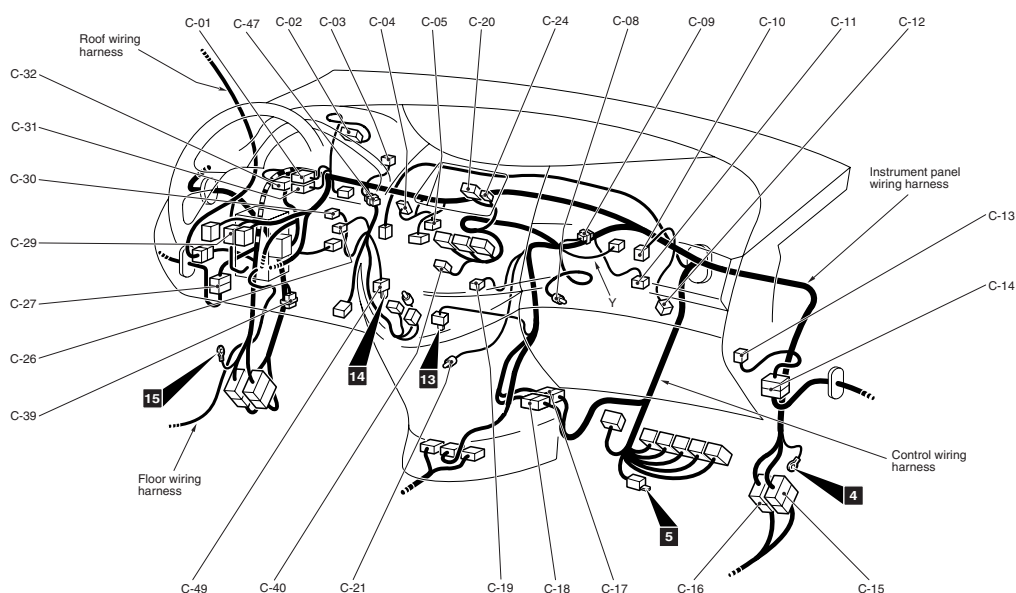
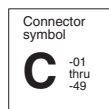
AC501451AC

B-101 (2-GR)	Injector 1	B-113 (1-B)	Capacitor
B-102 (2-GR)	Injector 2	B-114 (3-B)	Camshaft position sensor
B-103 (6-GR)	Exhaust gas recirculation valve	B-115 (1)	Starter
B-104 (2-GR)	Injector 3	B-116 (1-B)	Starter
B-105 (2-GR)	Injector 4	B-117 (1-B)	Engine oil pressure switch
B-106 (4-GR)	Air flow sensor	B-118 (1)	Alternator
B-108 (3-GR)	Output shaft speed sensor	B-119 (4-GR)	Alternator
B-109 (10-GR)	A/T control solenoid valve assembly	B-120 (1-B)	A/C compressor assembly
B-111 (10-B)	Inhibitor switch	B-121 (3-GR)	Crank angle sensor
B-112 (3-B)	Input shaft speed sensor		

DASH PANEL

DASH PANEL <LHD>

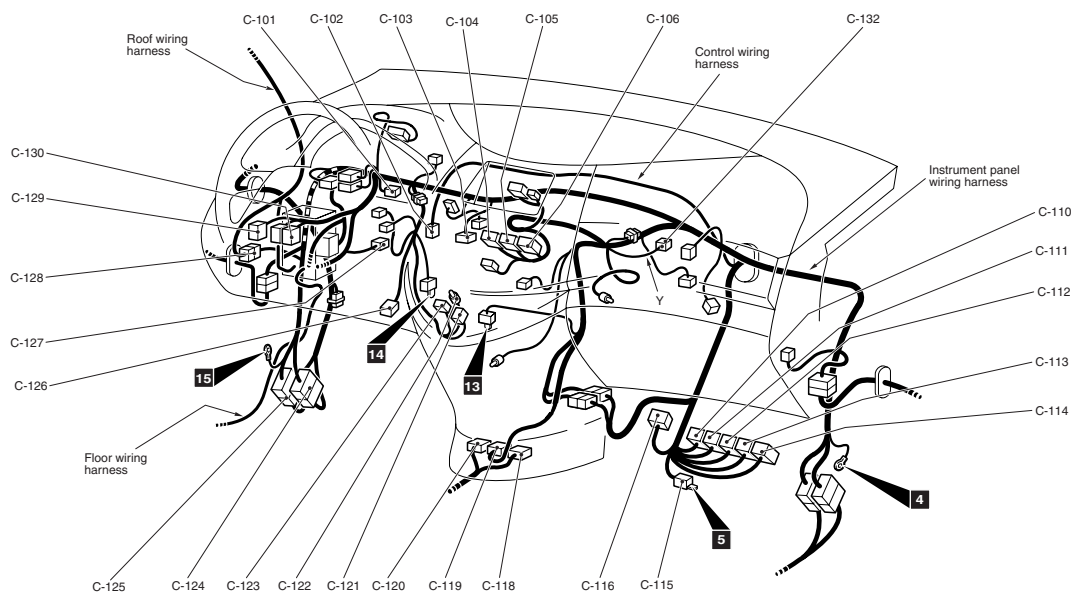
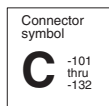
M1801000601727



AC501454AB

C-01	(33)	J/C (6)	C-18	(10)	Instrument panel wiring harness and control wiring harness combination
C-02	(40)	Combination meter	C-19	(6-GR)	Rear fan switch
C-03	(5)	Photo sensor	C-20	(14)	Radio and tape player or radio and CD player
C-04	(7-GR)	Mode selection damper control motor and potentiometer	C-21	(2)	Ashtray illumination lamp
C-05	(2)	Air thermo sensor	C-24	(1)	Glass antenna amp
C-08	(2)	Glove box lamp	C-26	(2)	Interior temperature sensor
C-09	(22-GR)	J/C (CAN 2)	C-27	(32)	Instrument panel wiring harness and front door wiring harness (LH) combination
C-10	(3)	Outside/ inside air selection damper control motor	C-29	(6-GR)	Headlamp levelling switch <Vehicles with headlamp manual levelling system>
C-11	(7)	Front air mixing damper control motor and potentiometer	C-30	(6)	PTC heater switch
C-12	(4)	Front power transistor	C-31	(33)	J/C (5)
C-13	(2)	Front blower motor	C-32	(33)	J/C (7)
C-14	(32)	Instrument panel wiring harness and front door wiring harness (RH) combination	C-39	(4)	Spare connector (For trailer)
C-15	(38)	Instrument panel wiring harness and floor wiring harness combination	C-40	(4)	Clock
C-16	(43)	Instrument panel wiring harness and floor wiring harness combination	C-47	(12)	J/C (CAN1)
C-17	(18)	Instrument panel wiring harness and control wiring harness combination	C-49	(11)	Earth

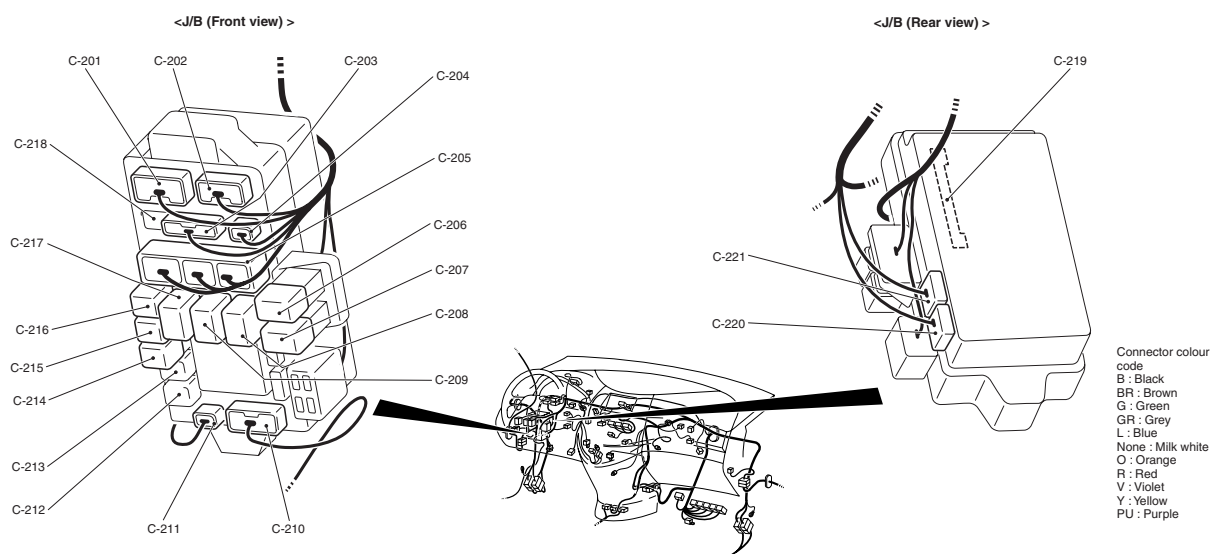
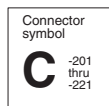
DASH PANEL <LHD> (CONTINUED)



AC501454AC

C-101 (2)	Jumper connector <Vehicles for GCC> or no connection <Vehicles except for GCC>	C-118 (20-Y)	SRS-ECU
C-102 (6-B)	Accelerator pedal position sensor	C-119 (28-Y)	SRS-ECU
C-103 (4)	PTC heater	C-120 (20-Y)	SRS-ECU
C-104 (22)	A/C-ECU	C-121 (6)	Shift switch assembly <A/T>
C-105 (16)	A/C-ECU	C-122 (2)	A/T selector lever position illumination lamp
C-106 (26)	A/C-ECU	C-123 (4)	Hazard warning lamp switch
C-110 (27-GR)	Engine-ECU <M/T> or Engine-A/T-ECU <A/T>	C-124 (43)	Instrument panel wiring harness and front wiring harness combination
C-111 (28-GR)	Engine-ECU <M/T> or Engine-A/T-ECU <A/T>	C-125 (38)	Instrument panel wiring harness and front wiring harness combination
C-112 (29-GR)	Engine-ECU <M/T> or Engine-A/T-ECU <A/T>	C-126 (16-B)	Diagnosis connector
C-113 (30-GR)	Engine-ECU <M/T> or Engine-A/T-ECU <A/T>	C-127 (4)	Stop lamp switch
C-114 (26-GR)	Engine-ECU <M/T> or Engine-A/T-ECU <A/T>	C-128 (25)	Instrument panel wiring harness and roof wiring harness combination
C-115 (11)	Earth	C-129 (11)	Remote controlled mirror switch
C-116 (33)	J/C (4)	C-130 (6)	Fog lamp switch
		C-132 (2-R)	Air bag module (squib) <Passenger's side>

DASH PANEL <LHD> (CONTINUED)



ACS02286AB

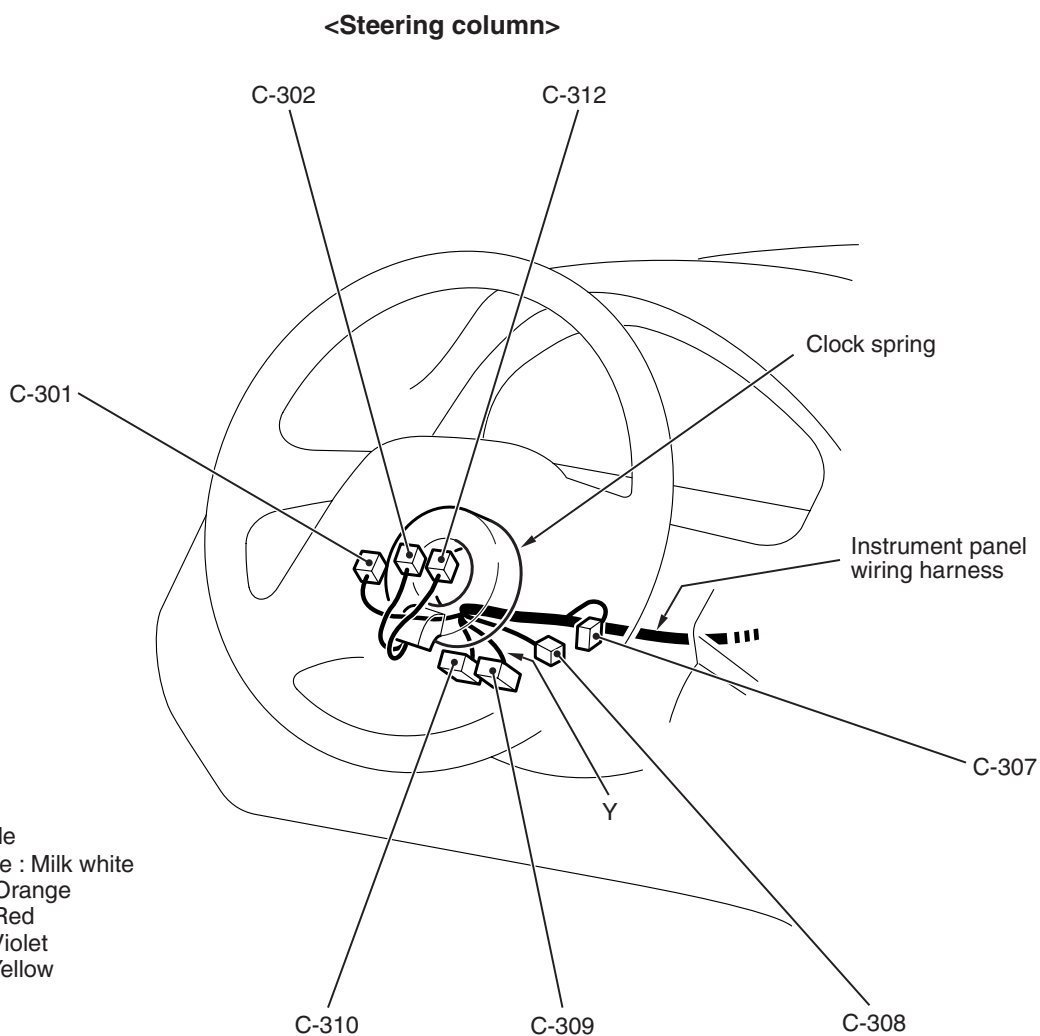
C-201 (13)	Instrument panel wiring harness and J/B combination	C-210 (15)	Floor wiring harness and J/B combination
C-202 (6)	Instrument panel wiring harness and J/B combination	C-211 (3)	Roof wiring harness and J/B combination
C-203 (14)	Instrument panel wiring harness and J/B combination	C-212 (4)	No connection
C-204 (1-B)	Instrument panel wiring harness and J/B combination	C-213 (4)	No connection
C-205 (28)	Instrument panel wiring harness and J/B combination	C-214 (4)	Fuel pump relay 2
C-206 (5)	PTC heater relay 1	C-215 (4)	Rear blower relay
C-207 (5)	PTC heater relay 2	C-216 (4)	Fuel pump relay 1
C-208 (5)	Rear window defogger relay	C-217 (5)	Power window relay
C-209 (5)	Front blower relay	C-218 (2)	No connection
		C-219 (20)	ETACS-ECU
		C-220 (24)	ETACS-ECU
		C-221 (24-GR)	ETACS-ECU

DASH PANEL <LHD> (CONTINUED)

Connector
symbol**C** -301
thru
-312

Connector colour code

B : Black	None : Milk white
BR : Brown	O : Orange
G : Green	R : Red
GR : Grey	V : Violet
L : Blue	Y : Yellow
PU : Purple	



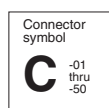
AC312292 AC

C-301 (10)	Column switch
C-302 (1)	Horn switch
C-307 (6)	Ignition switch
C-308 (7)	Key reminder switch

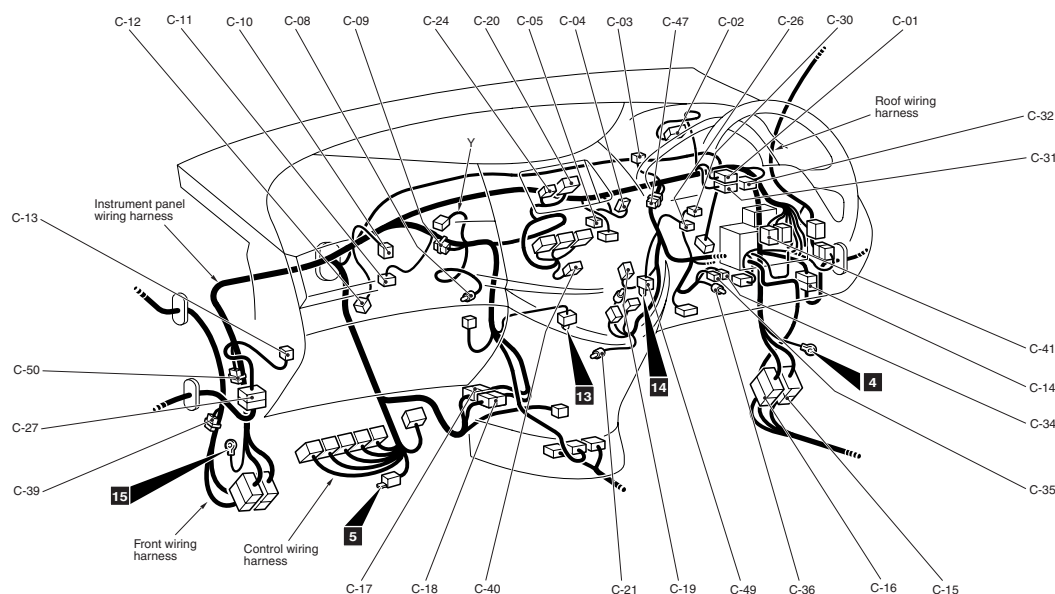
C-309 (4-Y)	Clock spring
C-310 (6-B)	Clock spring
C-312 (2-R)	Air bag module (squib) <Driver's side>

DASH PANEL <RHD EXCEPT FOR HONG KONG AND SINGAPORE>

M1801000601738



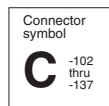
Connector colour code
B : Black
BR : Brown
G : Green
GR : Grey
L : Blue
None : Milk white
O : Orange
R : Red
V : Violet
Y : Yellow
PU : Purple



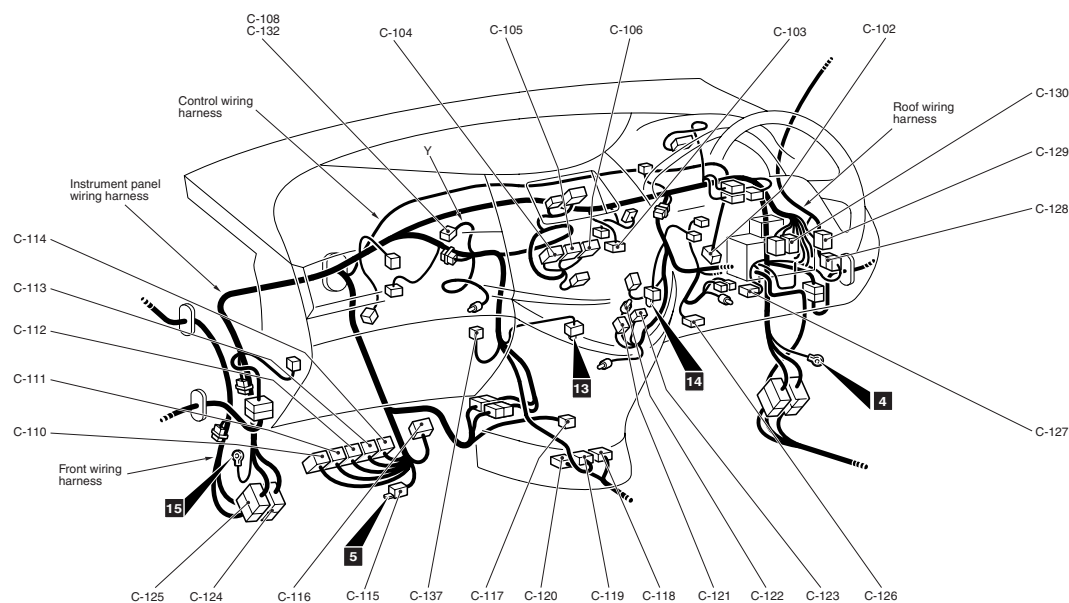
AC501458AB

C-01	(33)	J/C (6)	C-19	(6-GR)	Rear fan switch
C-02	(40)	Combination meter	C-20	(14)	Radio and tape player or radio and CD player
C-03	(5)	Photo sensor	C-21	(2)	Ashtray illumination lamp
C-04	(7-GR)	Mode selection damper control motor and potentiometer	C-24	(1)	Glass antenna amp
C-05	(2)	Air thermo sensor	C-26	(2)	Interior temperature sensor
C-08	(2)	Glove box lamp	C-27	(32)	Instrument panel wiring harness and front door wiring harness (LH) combination
C-09	(22-GR)	J/C (CAN 2)	C-30	(6)	PTC heater switch
C-10	(3)	Outside/ inside air selection damper control motor	C-31	(33)	J/C (5)
C-11	(7)	Front air mixing damper control motor and potentiometer	C-32	(33)	J/C (7)
C-12	(4)	Front power transistor	C-34	(1-B)	Cigarette lighter
C-13	(2)	Front blower motor	C-35	(1)	Cigarette lighter
C-14	(32)	Instrument panel wiring harness and front door wiring harness (RH) combination	C-36	(2)	Cigarette lighter illumination lamp
C-15	(38)	Instrument panel wiring harness and floor wiring harness combination	C-39	(4)	Spare connector (For trailer)
C-16	(43)	Instrument panel wiring harness and floor wiring harness combination	C-40	(4)	Clock
C-17	(18)	Instrument panel wiring harness and control wiring harness combination	C-41	(4)	Sonar switch
C-18	(10)	Instrument panel wiring harness and control wiring harness combination	C-47	(12)	J/C (CAN1)
			C-49	(11)	Earth
			C-50	(4)	Spare connector (For trailer) <Vehicles for Australia and New Zealand>

DASH PANEL <RHD EXCEPT FOR HONG KONG AND SINGAPORE> (CONTINUED)



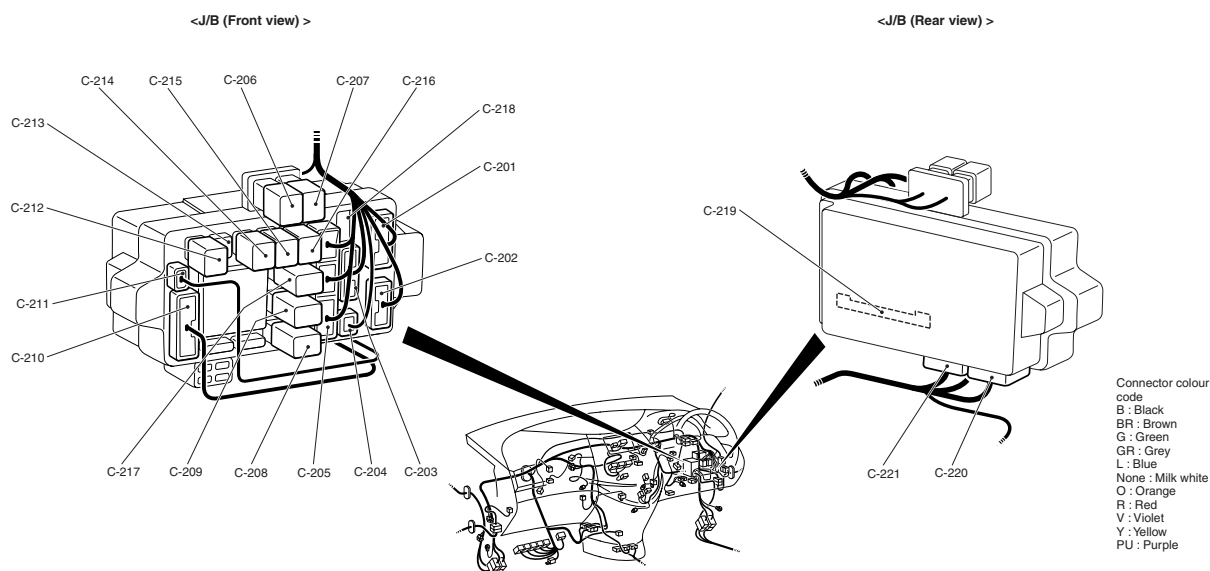
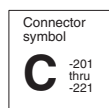
Connector colour code
 B : Black
 BR : Brown
 G : Green
 GR : Grey
 L : Blue
 None : Milk white
 O : Orange
 R : Red
 V : Violet
 Y : Yellow
 PU : Purple



AC501458AC

C-102 (6-B)	Accelerator pedal position sensor	C-120 (20-Y)	SRS-ECU
C-103 (4)	PTC heater	C-121 (6)	Shift switch assembly
C-104 (22)	A/C-ECU	C-122 (2)	A/T selector lever position illumination lamp
C-105 (16)	A/C-ECU	C-123 (4)	Hazard warning lamp switch
C-106 (26)	A/C-ECU	C-124 (43)	Instrument panel wiring harness and front wiring harness combination
C-108 (4-Y)	Air bag module (squib- Passenger's side) <Vehicles for Australia and New Zealand>	C-125 (38)	Instrument panel wiring harness and front wiring harness combination
C-110 (27-GR)	Engine-A/T-ECU	C-126 (16-B)	Diagnosis connector
C-111 (28-GR)	Engine-A/T-ECU	C-127 (4)	Stop lamp switch
C-112 (29-GR)	Engine-A/T-ECU	C-128 (25)	Instrument panel wiring harness and roof wiring harness combination
C-113 (30-GR)	Engine-A/T-ECU	C-129 (11)	Remote controlled mirror switch
C-114 (26-GR)	Engine-A/T-ECU	C-130 (6)	Fog lamp switch
C-115 (11)	Earth	C-132 (2-R)	Air bag module (squib- Passenger's side) <Except vehicles for Australia and New Zealand>
C-116 (33)	J/C (4)	C-137 (20-B)	Corner sensor/back sensor-ECU
C-117 (6)	No connector <Vehicles for Australia and New Zealand>		
C-118 (20-Y)	SRS-ECU		
C-119 (28-Y)	SRS-ECU		

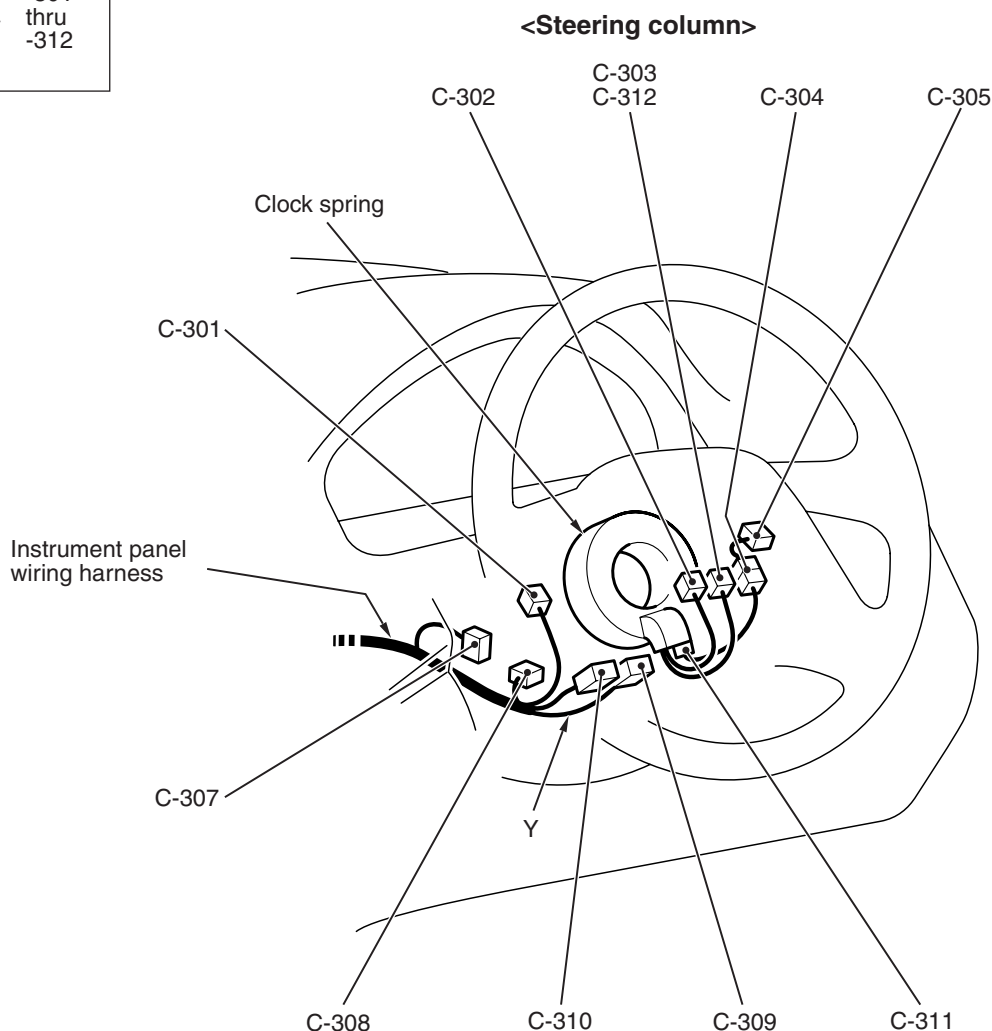
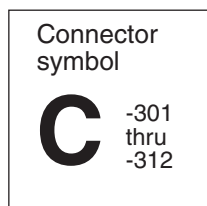
DASH PANEL <RHD EXCEPT FOR HONG KONG AND SINGAPORE> (CONTINUED)



AC502287 AB

C-201 (13)	Instrument panel wiring harness and J/B combination	C-210 (15)	Floor wiring harness and J/B combination
C-202 (6)	Instrument panel wiring harness and J/B combination	C-211 (3)	Roof wiring harness and J/B combination
C-203 (14)	Instrument panel wiring harness and J/B combination	C-212 (4)	Heated seat relay
C-204 (1-B)	Instrument panel wiring harness and J/B combination	C-213 (4)	No connection
C-205 (28)	Instrument panel wiring harness and J/B combination	C-214 (4)	Fuel pump relay 2
C-206 (5)	PTC heater relay 1	C-215 (4)	Rear blower relay
C-207 (5)	PTC heater relay 2	C-216 (4)	Fuel pump relay 1
C-208 (5)	Rear window defogger relay	C-217 (5)	Power window relay
C-209 (5)	Front blower relay	C-218 (2)	No connection
		C-219 (20)	ETACS-ECU
		C-220 (24)	ETACS-ECU
		C-221 (24-GR)	ETACS-ECU

DASH PANEL <RHD EXCEPT FOR HONG KONG AND SINGAPORE> (CONTINUED)

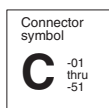


AC311842AC

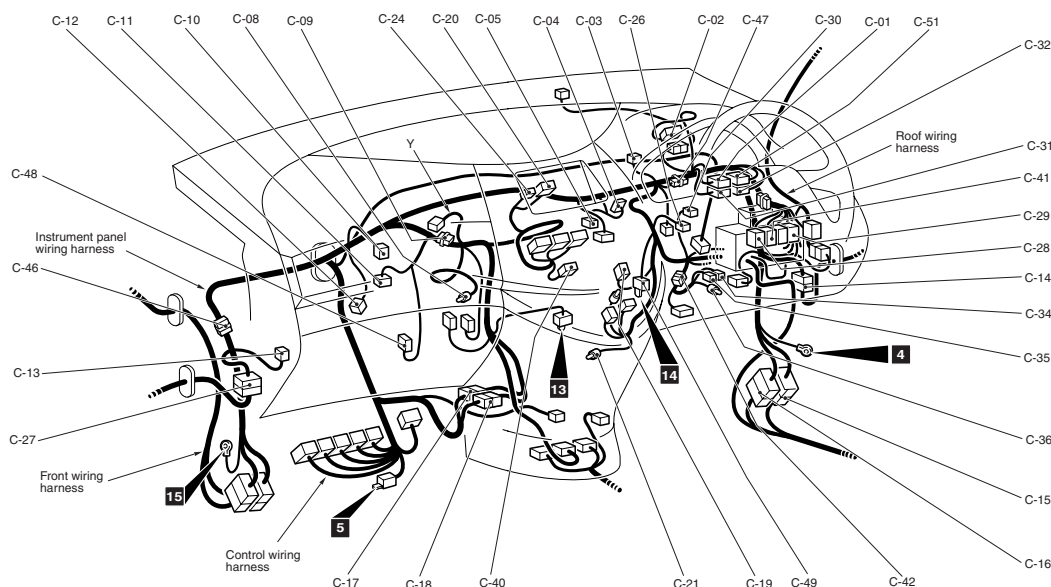
C-301 (10)	Column switch	C-307 (6)	Ignition switch
C-302 (1)	Horn switch	C-308 (7)	Key reminder switch
C-303 (4-Y)	Air bag module (squib- Driver's side) <Vehicles for Australia and New Zealand>	C-309 (4-Y)	Clock spring
C-304 (3-B)	Clock spring sub wiring harness and auto-cruise control switch sub wiring harness combination	C-310 (6-B)	Clock spring
C-305 (3-Y)	Auto-cruise control switch	C-311 (5-GR)	Clock spring and clock spring sub wiring harness combination
		C-312 (2-R)	Air bag module (squib- Driver's side) <Except vehicles for Australia and New Zealand>

DASH PANEL <VEHICLES FOR HONG KONG AND SINGAPORE>

M1801000601879



Connector colour code
B : Black
BR : Brown
G : Green
GR : Grey
L : Blue
None : Milk white
O : Orange
R : Red
V : Violet
Y : Yellow
PU : Purple



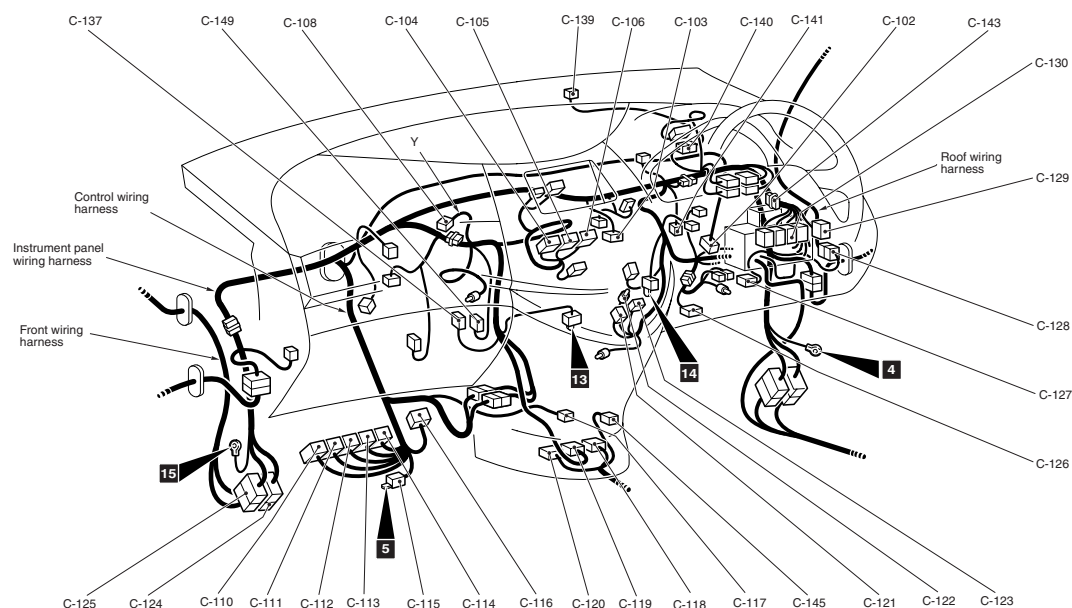
AC503092AB

C-01	(33)	J/C (6)	C-20	(14)	Radio and tape player or radio and CD player
C-02	(40)	Combination meter	C-21	(2)	Ashtray illumination lamp
C-03	(5)	Photo sensor	C-24	(1)	Glass antenna amp
C-04	(7-GR)	Mode selection damper control motor and potentiometer	C-26	(2)	Interior temperature sensor
C-05	(2)	Air thermo sensor	C-27	(32)	Instrument panel wiring harness and front door wiring harness (LH) combination
C-08	(2)	Glove box lamp	C-28	(6-B)	No connection
C-09	(22-GR)	J/C (CAN 2)	C-29	(6-GR)	Headlamp levelling switch
C-10	(3)	Outside/ inside air selection damper control motor	C-30	(6)	PTC heater switch
C-11	(7)	Front air mixing damper control motor and potentiometer	C-31	(33)	J/C (5)
C-12	(4)	Front power transistor	C-32	(33)	J/C (7)
C-13	(2)	Front blower motor	C-34	(1-B)	Cigarette lighter
C-14	(32)	Instrument panel wiring harness and front door wiring harness (RH) combination	C-35	(1)	Cigarette lighter
C-15	(38)	Instrument panel wiring harness and floor wiring harness combination	C-36	(2)	Cigarette lighter illumination lamp
C-16	(43)	Instrument panel wiring harness and floor wiring harness combination	C-40	(4)	Clock
C-17	(18)	Instrument panel wiring harness and control wiring harness combination	C-41	(4)	Sonar switch
C-18	(10)	Instrument panel wiring harness and control wiring harness combination	C-42	(4)	Spare connector (Multi-purpose)
C-19	(6-GR)	Rear fan switch	C-46	(16)	No connection
			C-47	(12)	J/C (CAN1)
			C-48	(22)	Headlamp automatic levelling-ECU
			C-49	(11)	Earth
			C-51	(33)	J/C (13)

DASH PANEL <VEHICLES FOR HONG KONG AND SINGAPORE> (CONTINUED)

Connector
symbolC
-102
thru
-149

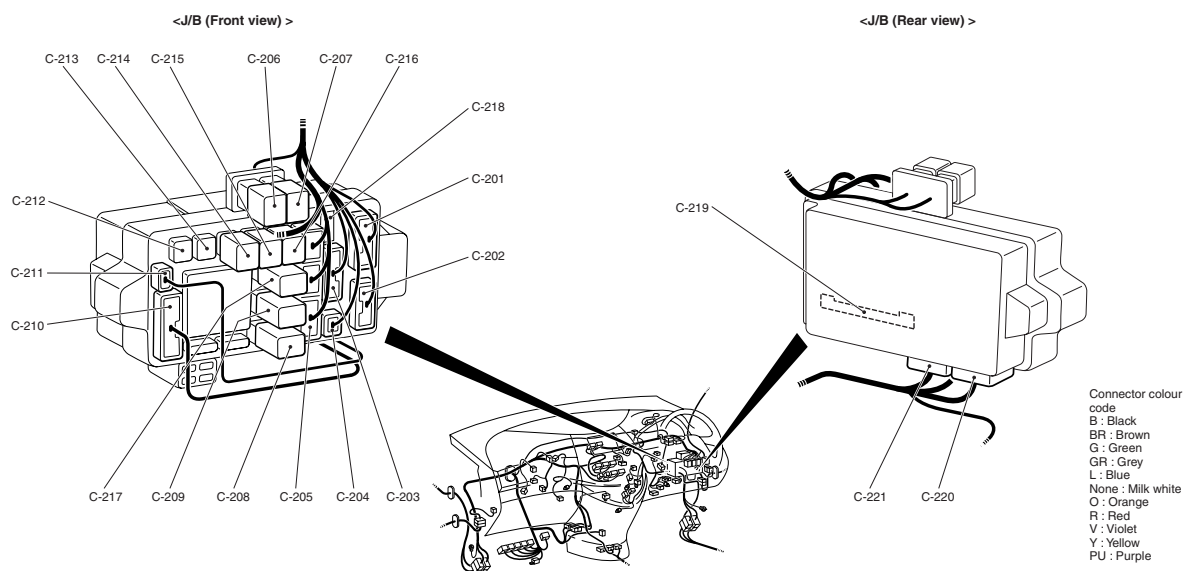
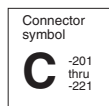
Connector colour
code
B : Black
BR : Brown
G : Green
GR : Grey
L : Blue
None : Milk white
O : Orange
R : Red
V : Violet
Y : Yellow
PU : Purple



AC503092AC

C-102 (6-B)	Accelerator pedal position sensor	C-123 (4)	Hazard warning lamp switch
C-103 (4)	PTC heater	C-124 (43)	Instrument panel wiring harness and front wiring harness combination
C-104 (22)	A/C-ECU	C-125 (38)	Instrument panel wiring harness and front wiring harness combination
C-105 (16)	A/C-ECU	C-126 (16-B)	Diagnosis connector
C-106 (26)	A/C-ECU	C-127 (4)	Stop lamp switch
C-108 (4-Y)	Air bag module (squib) <Passenger's side>	C-128 (25)	Instrument panel wiring harness and roof wiring harness combination
C-110 (27-GR)	Engine-A/T-ECU	C-129 (11)	Remote controlled mirror switch
C-111 (28-GR)	Engine-A/T-ECU	C-130 (6)	Fog lamp switch
C-112 (29-GR)	Engine-A/T-ECU	C-137 (20-B)	Corner sensor/back sensor-ECU
C-113 (30-GR)	Engine-A/T-ECU	C-139 (2)	Security indicator
C-114 (26-GR)	Engine-A/T-ECU	C-140 (2)	Instrument panel wiring harness and security indicator sub wiring harness combination
C-115 (11)	Earth	C-141 (1)	Parking brake switch
C-116 (33)	J/C (4)	C-143 (8)	No connection
C-117 (6)	No connection	C-145 (4)	No connection
C-118 (22-Y)	SRS-ECU	C-149 (8)	Immobilizer-ECU
C-119 (28-Y)	SRS-ECU		
C-120 (22-Y)	SRS-ECU		
C-121 (6)	Shift switch assembly		
C-122 (2)	A/T selector lever position illumination lamp		

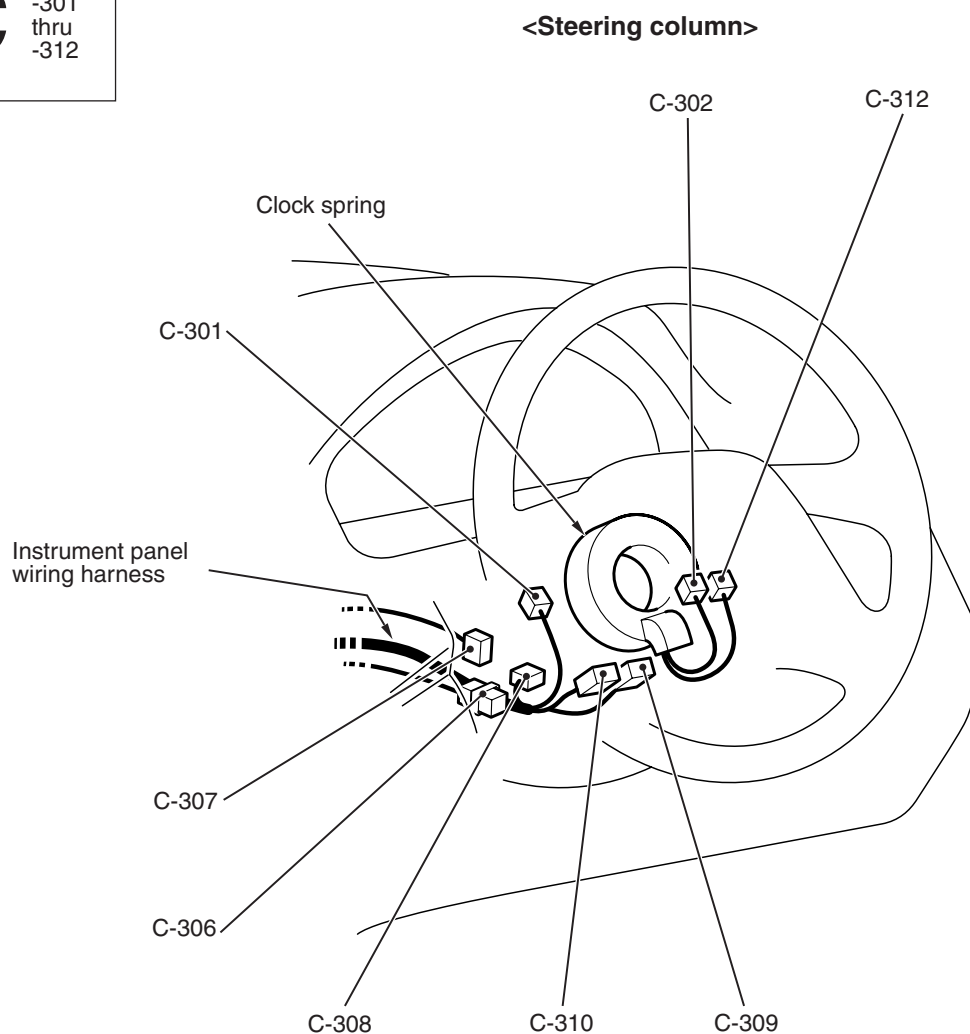
DASH PANEL <VEHICLES FOR HONG KONG AND SINGAPORE> (CONTINUED)



AC312868AC

C-201 (13)	Instrument panel wiring harness and J/B combination	C-210 (15)	Floor wiring harness and J/B combination
C-202 (6)	Instrument panel wiring harness and J/B combination	C-211 (3)	Roof wiring harness and J/B combination
C-203 (14)	Instrument panel wiring harness and J/B combination	C-212 (4)	No connection
C-204 (1-B)	Instrument panel wiring harness and J/B combination	C-213 (4)	No connection
C-205 (28)	Instrument panel wiring harness and J/B combination	C-214 (4)	Fuel pump relay 2
C-206 (5)	PTC heater relay 1	C-215 (4)	Rear blower relay
C-207 (5)	PTC heater relay 2	C-216 (4)	Fuel pump relay 1
C-208 (5)	Rear window defogger relay	C-217 (5)	Power window relay
C-209 (5)	Front blower relay	C-218 (2)	No connection
		C-219 (20)	ETACS-ECU
		C-220 (24)	ETACS-ECU
		C-221 (24-GR)	ETACS-ECU

DASH PANEL <VEHICLES FOR HONG KONG AND SINGAPORE> (CONTINUED)

Connector
symbolC
-301
thru
-312

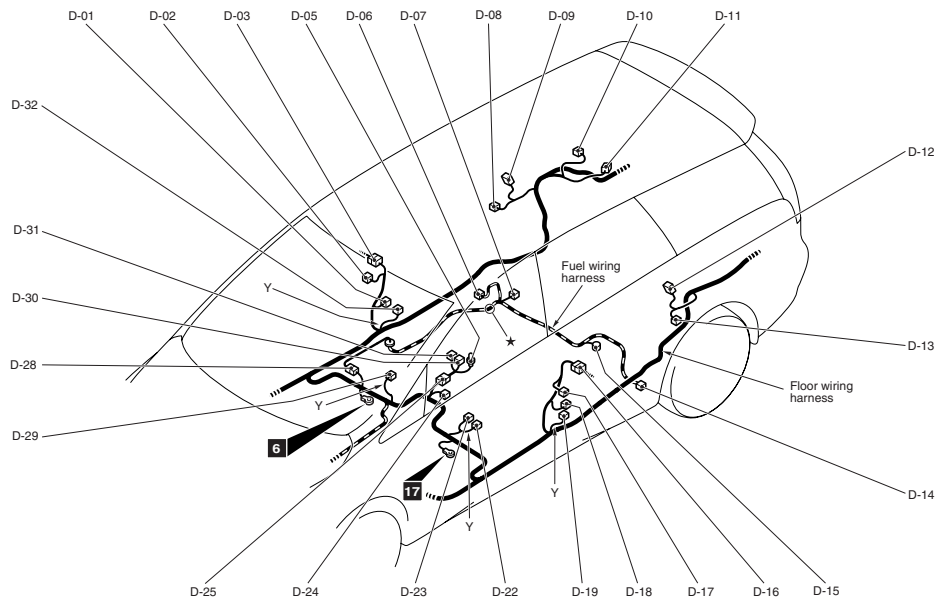
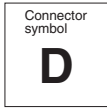
AC503097AB

C-301 (10)	Column switch	C-308 (12)	Key reminder switch
C-302 (1)	Horn switch	C-309 (4-Y)	Clock spring
C-306 (5)	No connection	C-310 (6-B)	Clock spring
C-307 (6)	Ignition switch	C-312 (2-R)	Air bag module (squib) <Driver's side>

FLOOR

FLOOR <LHD>

M1801003500124



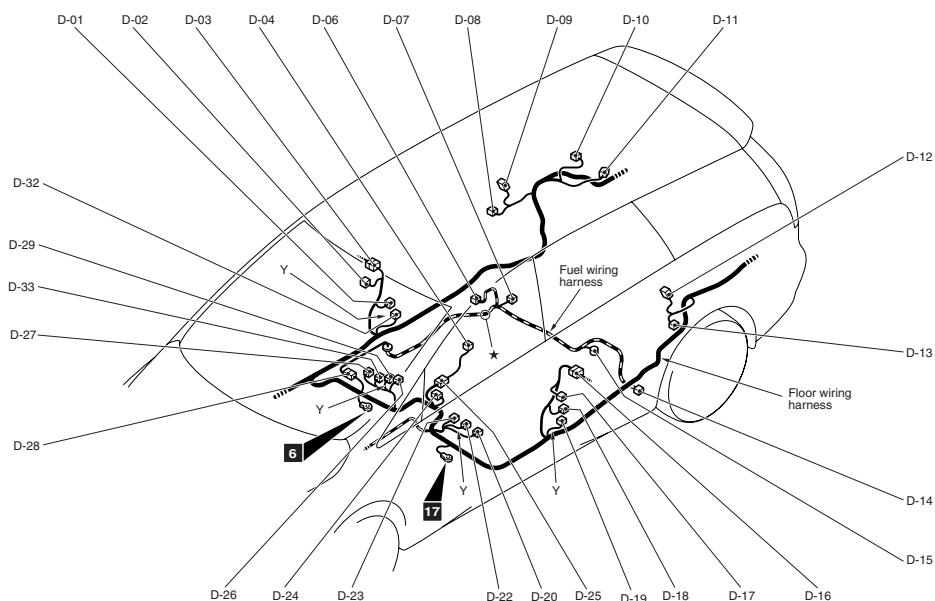
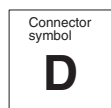
ACS01462AB

D-01	(2-Y)	Side impact sensor (Front: RH)
D-02	(3)	Door switch (Front: RH)
D-03	(10-B)	Floor wiring harness and rear door wiring harness (RH) combination
D-05	(2)	Cigarette lighter illumination lamp
D-06	(2-B)	Wheel speed sensor (Rear: RH)
D-07	(2)	Fuel tank gauge unit
D-08	(3)	Door switch (Rear: RH)
D-09	(2-Y)	Side impact sensor (Rear: RH)
D-10	(2)	Rear blower motor
D-11	(4)	Rear power transistor
D-12	(2-Y)	Side impact sensor (Rear: LH)
D-13	(3)	Door switch (Rear: LH)
D-14	(2-B)	Wheel speed sensor (Rear: LH)
D-15	(5-GR)	Fuel tank pump and gauge unit assembly

D-16	(10)	Floor wiring harness and rear door wiring harness (LH) combination
D-17	(3)	Door switch (Front: LH)
D-18	(2-Y)	Side impact sensor (Front: LH)
D-19	(2-B)	Seat belt pre-tensioner (LH)
D-22	(2-R)	Side-airbag module (squib) (LH)
D-23	(2)	Seat belt switch (LH)
D-24	(1-B)	Parking brake switch
D-25	(10-GR)	Floor wiring harness and console wiring harness combination
D-28	(13)	Floor wiring harness and fuel wiring harness combination
D-29	(2-R)	Side-airbag module (squib) (RH)
D-30	(1)	Cigarette lighter
D-31	(1-B)	Cigarette lighter
D-32	(2-B)	Seat belt pre-tensioner (RH)

FLOOR <RHD EXCEPT FOR HONG KONG AND SINGAPORE>

M1801003500135

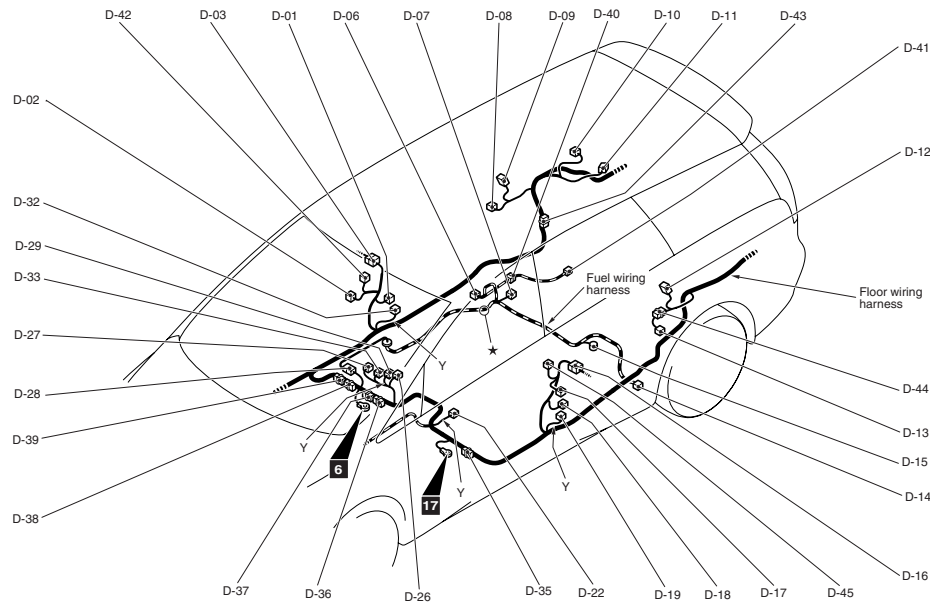
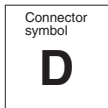


AC501465AB

D-01	(2-Y)	Side impact sensor (Front: RH)	D-18	(2-Y)	Side impact sensor (Front: LH)
D-02	(3)	Door switch (Front: RH)	D-19	(2-B)	Seat belt pre-tensioner (LH)
D-03	(10-B)	Floor wiring harness and rear door wiring harness (RH) combination	D-20	(3-B)	Heated seat (LH)
D-04	(9)	Heated seat switch	D-22	(2-R)	Side-airbag module (squib) (LH)
D-06	(2-B)	Wheel speed sensor (Rear: RH)	D-23	(2)	Seat belt switch (LH) <Vehicles for Australia and New Zealand>
D-07	(2)	Fuel tank gauge unit	D-24	(1-B)	Parking brake switch
D-08	(3)	Door switch (Rear: RH)	D-25	(10-GR)	Floor wiring harness and console wiring harness combination
D-09	(2-Y)	Side impact sensor (Rear: RH)	D-26	(2)	Seat belt switch (RH) <Vehicles for Australia and New Zealand>
D-10	(2)	Rear blower motor	D-27	(3-B)	Heated seat (RH)
D-11	(4)	Rear power transistor	D-28	(13)	Floor wiring harness and fuel wiring harness combination
D-12	(2-Y)	Side impact sensor (Rear: LH)	D-29	(2-R)	Side-airbag module (squib) (RH)
D-13	(3)	Door switch (Rear: LH)	D-32	(2-B)	Seat belt pre-tensioner (RH)
D-14	(2-B)	Wheel speed sensor (Rear: LH)	D-33	(2-GR)	Seat slide sensor (RH) <Vehicles for Australia and New Zealand>
D-15	(5-GR)	Fuel tank pump and gauge unit assembly			
D-16	(10)	Floor wiring harness and rear door wiring harness (LH) combination			
D-17	(3)	Door switch (Front: LH)			

FLOOR <VEHICLES FOR HONG KONG AND SINGAPORE>

M1801003500168



Connector colour code
B : Black
BR : Brown
G : Green
GR : Grey
L : Blue
None : Milk white
O : Orange
R : Red
V : Violet
Y : Yellow
PU : Purple

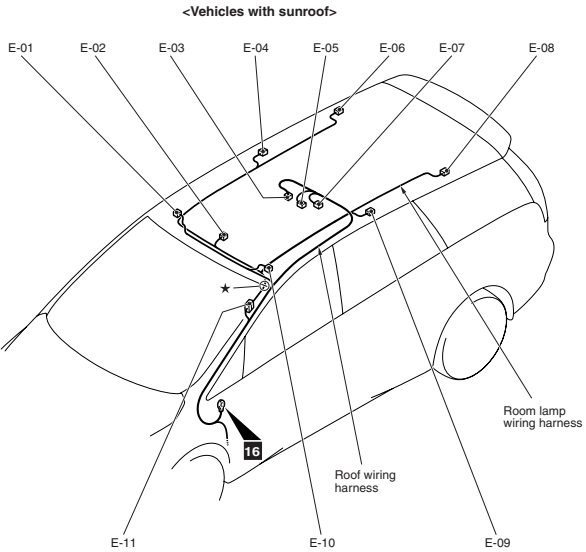
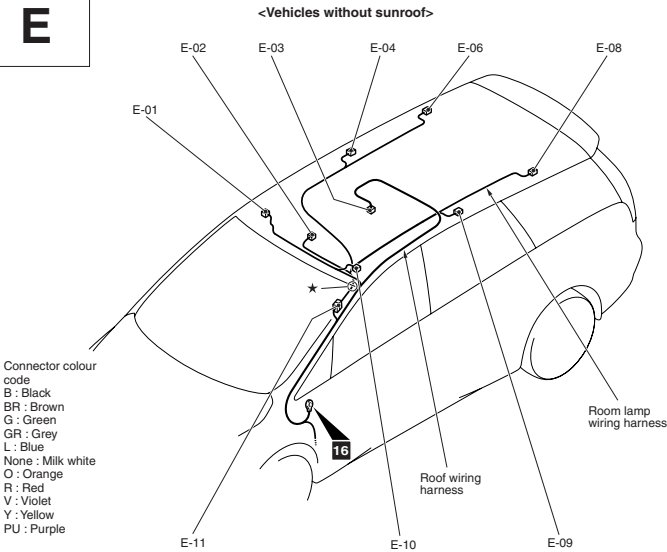
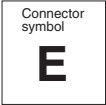
AC502634 AB

D-01	(2-Y)	Side impact sensor (Front: RH)	D-26	(2)	Seat belt switch (RH)
D-02	(3)	Door switch (Front: RH)	D-27	(4)	No connection
D-03	(10-B)	Floor wiring harness and rear door wiring harness (RH) combination	D-28	(13)	Floor wiring harness and fuel wiring harness combination
D-06	(2-B)	Wheel speed sensor (Rear: RH)	D-29	(2-R)	Side-airbag module (squib) (RH)
D-07	(2)	Fuel tank gauge unit	D-32	(2-B)	Seat belt pre-tensioner (RH)
D-08	(3)	Door switch (Rear: RH)	D-33	(2-GR)	Seat slide sensor (RH)
D-09	(2-Y)	Side impact sensor (Rear: RH)	D-35	(12)	No connection
D-10	(2)	Rear blower motor	D-36	(1-BR)	Glass antenna
D-11	(4)	Rear power transistor	D-37	(20-B)	Spare connector (For TV tuner)
D-12	(2-Y)	Side impact sensor (Rear: LH)	D-38	(8)	Spare connector (For navigation unit)
D-13	(3)	Door switch (Rear: LH)	D-39	(1-L)	Glass antenna
D-14	(2-B)	Wheel speed sensor (Rear: LH)	D-40	(3-B)	Fuel wiring harness and height sensor sub wiring harness combination
D-15	(5-GR)	Fuel tank pump and gauge unit assembly	D-41	(3-B)	Height sensor (Rear) <Vehicles with headlamp automatic levelling system>
D-16	(10)	Floor wiring harness and rear door wiring harness (LH) combination	D-42	(3)	No connection
D-17	(3)	Door switch (Front: LH)	D-43	(3)	No connection
D-18	(2-Y)	Side impact sensor (Front: LH)	D-44	(12)	No connection
D-19	(2-B)	Seat belt pre-tensioner (LH)	D-45	(3)	No connection
D-22	(2-R)	Side-airbag module (squib) (LH)			

ROOF

ROOF <LHD>

M1801003600080



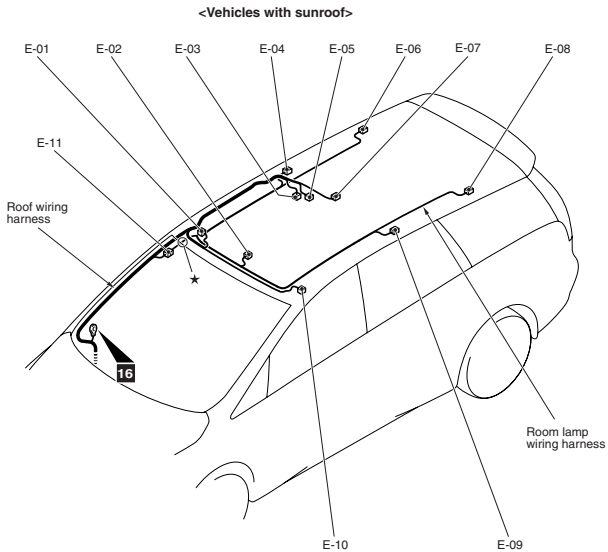
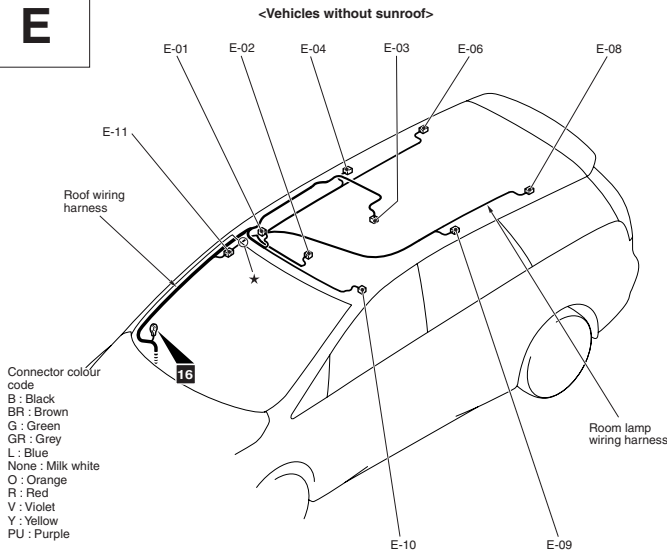
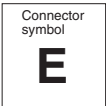
AC310817AC

- E-01 (2) Vanity mirror lamp (RH)
- E-02 (10) Room lamp
- E-03 (20) Rear heater controller
- E-04 (3) Rear personal lamp (for second seat: RH)
- E-05 (3) Sunroof switch
- E-06 (3) Rear personal lamp (for third seat: RH)

- E-07 (10) Sunroof motor assembly
- E-08 (3) Rear personal lamp (for third seat: LH)
- E-09 (3) Rear personal lamp (for second seat: LH)
- E-10 (2) Vanity mirror lamp (LH)
- E-11 (6) Roof wiring harness and room lamp wiring harness combination

ROOF < RHD >

M1801003600091



AC310818AC

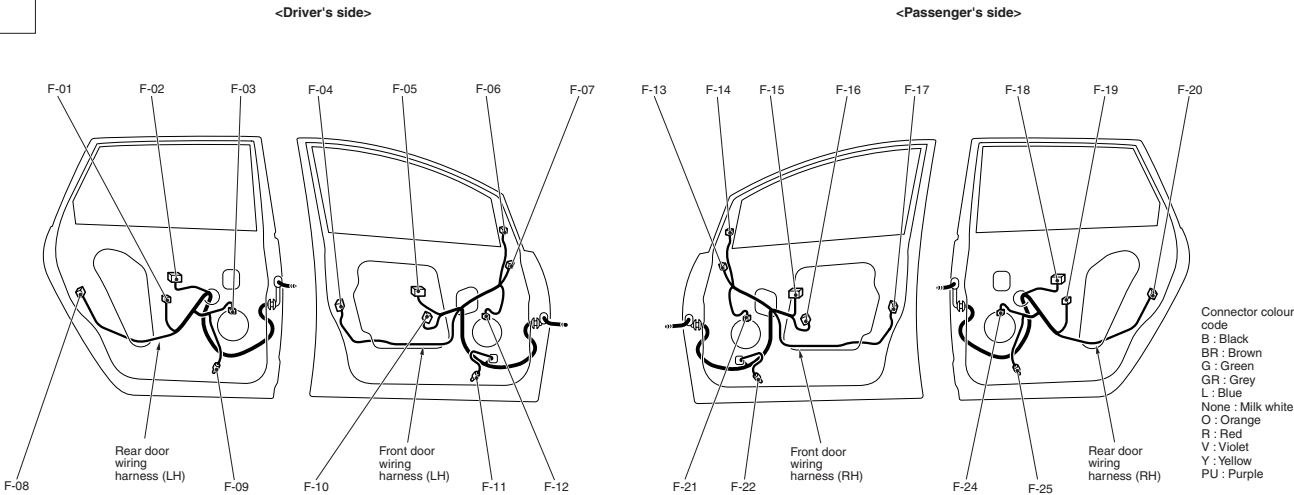
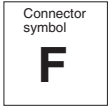
- | | | |
|------|------|--|
| E-01 | (2) | Vanity mirror lamp (RH) |
| E-02 | (10) | Room lamp |
| E-03 | (20) | Rear heater controller |
| E-04 | (3) | Rear personal lamp (for second seat: RH) |
| E-05 | (3) | Sunroof switch |
| E-06 | (3) | Rear personal lamp (for third seat: RH) |

- | | | |
|------|------|--|
| E-07 | (10) | Sunroof motor assembly |
| E-08 | (3) | Rear personal lamp (for third seat: LH) |
| E-09 | (3) | Rear personal lamp (for second seat: LH) |
| E-10 | (2) | Vanity mirror lamp (LH) |
| E-11 | (6) | Roof wiring harness and room lamp wiring harness combination |

DOOR

DOOR <LHD>

M1801001401395

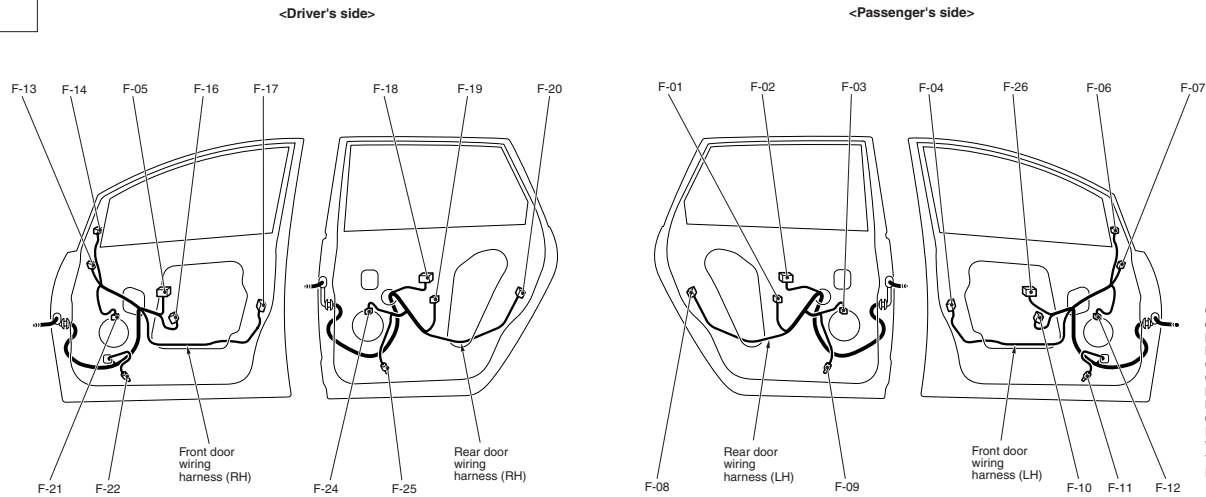
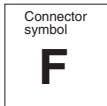


F-01	(2-B)	Power window motor (Rear: LH)	F-13	(10)	Door mirror assembly (RH)
F-02	(8-B)	Power window sub switch (Rear: LH)	F-14	(2)	Tweeter (RH)
F-03	(2)	Rear door speaker (LH)	F-15	(8-B)	Power window sub switch (Front: RH)
F-04	(6-B)	Door lock actuator (Front: LH)	F-16	(2-B)	Power window motor (Front: RH)
F-05	(14-B)	Power window main switch	F-17	(6-B)	Door lock actuator (Front: RH)
F-06	(2)	Tweeter (LH)	F-18	(8-B)	Power window sub switch (Rear: RH)
F-07	(10)	Door mirror assembly (LH)	F-19	(2-B)	Power window motor (Rear: RH)
F-08	(6-B)	Door lock actuator (Rear: LH)	F-20	(6-B)	Door lock actuator (Rear: RH)
F-09	(2)	Door lamp (Rear: LH)	F-21	(2)	Front door speaker (RH)
F-10	(2-B)	Power window motor (Front: LH)	F-22	(2)	Door lamp (Front: RH)
F-11	(2)	Door lamp (Front: LH)	F-24	(2)	Rear door speaker (RH)
F-12	(2)	Front door speaker (LH)	F-25	(2)	Door lamp (Rear: RH)

AC502297AB

DOOR <RHD>

M1801001401403



AC502298AB

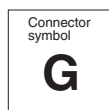
F-01	(2-B)	Power window motor (Rear: LH)
F-02	(8-B)	Power window sub switch (Rear: LH) <Except vehicles for Hong Kong and Singapore>
	(8)	Power window sub switch (Rear: LH) <Vehicles for Hong Kong and Singapore>
F-03	(2)	Rear door speaker (LH)
F-04	(6-B)	Door lock actuator (Front: LH)
F-05	(14-B)	Power window main switch <Except vehicles for Hong Kong and Singapore>
	(14)	Power window main switch <Vehicles for Hong Kong and Singapore>
F-06	(2)	Tweeter (LH)
F-07	(10)	Door mirror assembly (LH)
F-08	(6-B)	Door lock actuator (Rear: LH)
F-09	(2)	Door lamp (Rear: LH)
F-10	(2-B)	Power window motor (Front: LH)
F-11	(2)	Door lamp (Front: LH)
F-12	(2)	Front door speaker (LH)
F-13	(10)	Door mirror assembly (RH)

F-14	(2)	Tweeter (RH)
F-16	(2-B)	Power window motor (Front: RH)
F-17	(6-B)	Door lock actuator (Front: RH)
F-18	(8-B)	Power window sub switch (Rear: RH) <Except vehicles for Hong Kong and Singapore>
	(8)	Power window sub switch (Rear: RH) <Vehicles for Hong Kong and Singapore>
F-19	(2-B)	Power window motor (Rear: RH)
F-20	(6-B)	Door lock actuator (Rear: RH)
F-21	(2)	Front door speaker (RH)
F-22	(2)	Door lamp (Front: RH)
F-24	(2)	Rear door speaker (RH)
F-25	(2)	Door lamp (Rear: RH)
F-26	(8-B)	Power window sub switch (Front: LH) <Except vehicles for Hong Kong and Singapore>
	(8)	Power window sub switch (Front: LH) <Vehicles for Hong Kong and Singapore>

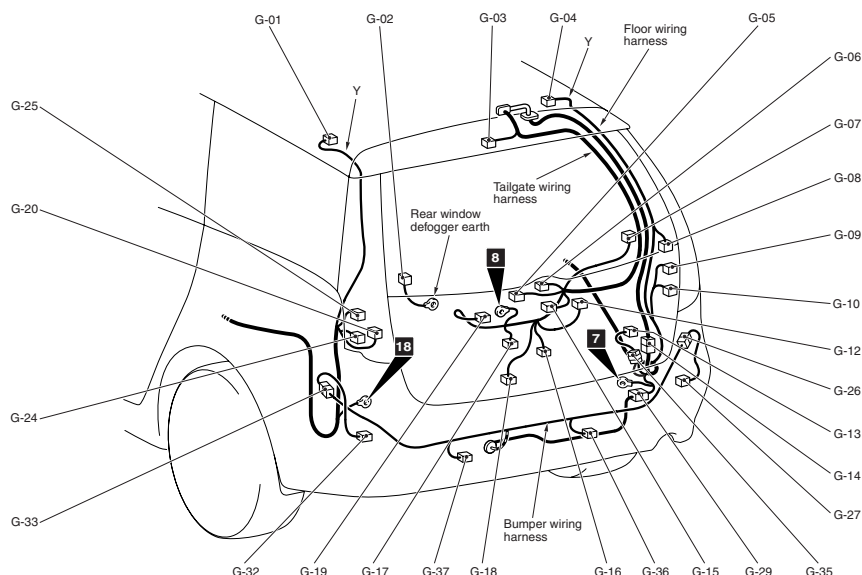
TAILGATE

TAILGATE <EXCEPT VEHICLES FOR HONG KONG AND SINGAPORE>

M1801001900632



Connector colour code
 B : Black
 BR : Brown
 G : Green
 GR : Grey
 L : Blue
 None : Milk white
 O : Orange
 R : Red
 V : Violet
 Y : Yellow
 PU : Purple

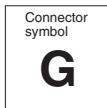


ACS01468AB

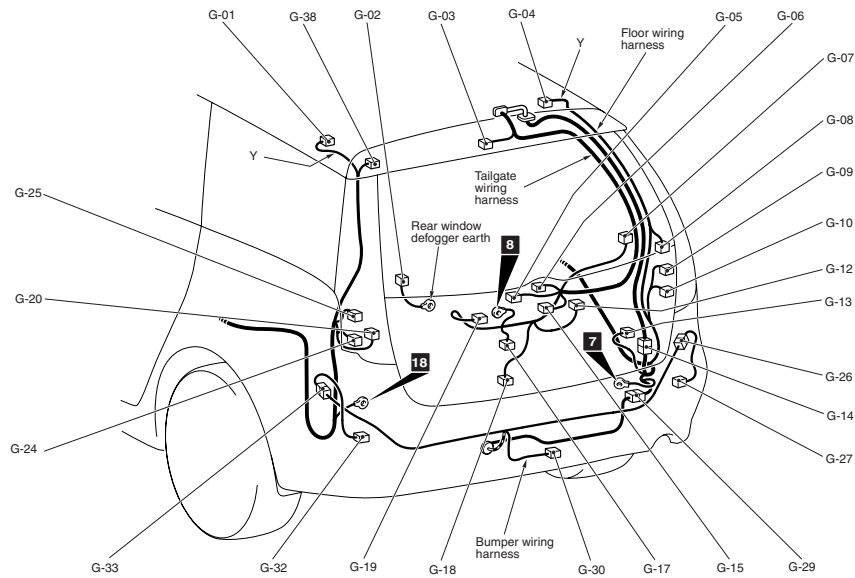
G-01	(2-B)	Curtain air bag module (squib) (LH)	G-18	(1-B)	Tailgate switch
G-02	(1)	Rear window defogger (-)	G-19	(2)	Licence plate lamp (LH)
G-03	(2)	High-mounted stop lamp	G-20	(3)	Tail/ stop lamp (LH)
G-04	(2-B)	Curtain air bag module (squib) (RH)	G-24	(2-GR)	Back-up lamp (LH)
G-05	(4)	Rear wiper motor	G-25	(2-B)	Rear turn-signal lamp (LH)
G-06	(2)	Tailgate lock release handle	G-26	(2-B)	Bumper wiring harness and rear corner sensor sub wiring harness (RH) combination
G-07	(1-B)	Rear window defogger (+)	G-27	(2-GR)	Corner sensor (Rear: RH)
G-08	(3)	Tail/ stop lamp (RH)	G-29	(12)	Floor wiring harness and bumper wiring harness combination
G-09	(2-B)	Rear turn-signal lamp (RH)	G-32	(2-GR)	Corner sensor (Rear: LH)
G-10	(2-GR)	Back-up lamp (RH)	G-33	(2-B)	Bumper wiring harness and rear corner sensor sub wiring harness (LH) combination
G-12	(2)	Luggage compartment lamp	G-35	(1)	Spare connector (For trailer) <Vehicles for Australia and New Zealand>
G-13	(5)	Rear air mixing damper control motor and potentiometer	G-36	(2-B)	Back sensor (RH)
G-14	(14)	Floor wiring harness and tailgate wiring harness combination	G-37	(2-B)	Back sensor (LH)
G-15	(2)	Licence plate lamp (RH)			
G-16	(3)	Tailgate key switch <Vehicles without keyless entry system>			
G-17	(2-B)	Tailgate lock actuator			

TAILGATE <VEHICLES FOR HONG KONG AND SINGAPORE>

M1801001900676



Connector colour code
B : Black
BR : Brown
G : Green
GR : Grey
L : Blue
None : Milk white
O : Orange
R : Red
V : Violet
Y : Yellow
PU : Purple



AC502637AB

G-01	(2-B)	Curtain air bag module (squib) (LH)	G-18	(1-B)	Tailgate switch
G-02	(1)	Rear window defogger (-)	G-19	(2)	Licence plate lamp (LH)
G-03	(2)	High-mounted stop lamp	G-20	(3)	Tail/ stop lamp (LH)
G-04	(2-B)	Curtain air bag module (squib) (RH)	G-24	(2-GR)	Back-up lamp (LH)
G-05	(4)	Rear wiper motor	G-25	(2-B)	Rear turn-signal lamp (LH)
G-06	(2)	Tailgate lock release handle	G-26	(2-B)	Bumper wiring harness and rear corner sensor sub wiring harness (RH) combination
G-07	(1-B)	Rear window defogger (+)	G-27	(2-GR)	Corner sensor (Rear: RH)
G-08	(3)	Tail/ stop lamp (RH)	G-29	(12)	Floor wiring harness and bumper wiring harness combination
G-09	(2-B)	Rear turn-signal lamp (RH)	G-30	(2-B)	Back sensor
G-10	(2-GR)	Back-up lamp (RH)	G-32	(2-GR)	Corner sensor (Rear: LH)
G-12	(2)	Luggage compartment lamp	G-33	(2-B)	Bumper wiring harness and rear corner sensor sub wiring harness (LH) combination
G-13	(5)	Rear air mixing damper control motor and potentiometer	G-38	(6)	No connection
G-14	(14)	Floor wiring harness and tailgate wiring harness combination			
G-15	(2)	Licence plate lamp (RH)			
G-17	(2-B)	Tailgate lock actuator			