

---

## GROUP 21A

# CLUTCH

### CONTENTS

<b>GENERAL INFORMATION .....</b>	<b>21A-2</b>	<b>CLUTCH PEDAL.....</b>	<b>21A-4</b>
<b>SERVICE SPECIFICATIONS.....</b>	<b>21A-2</b>	REMOVAL AND INSTALLATION .....	21A-4
<b>LUBRICANTS .....</b>	<b>21A-2</b>	<b>CLUTCH CONTROL.....</b>	<b>21A-5</b>
<b>ON-VEHICLE SERVICE.....</b>	<b>21A-2</b>	REMOVAL AND INSTALLATION .....	21A-5
CLUTCH PEDAL CHECK AND		INSPECTION.....	21A-6
ADJUSTMENT .....	21A-2	DISASSEMBLY AND REASSEMBLY .....	21A-7
CLUTCH BLEEDING .....	21A-3	INSPECTION.....	21A-8

## GENERAL INFORMATION

M1211000100234

The clutch is a dry single-disc, diaphragm type; hydraulic pressure is used for the clutch control. The clutch shares a brake fluid reservoir with the brake system.

## SERVICE SPECIFICATIONS

M1211000300227

Item	Standard value
Clutch pedal height mm	226 – 229
Clutch pedal clevis pin play mm	1 – 3
Clutch pedal free play mm	4 – 13
Distance between the clutch pedal and the clutch pedal stopper when the clutch pedal is released mm	30 or more

## LUBRICANTS

M1211000400183

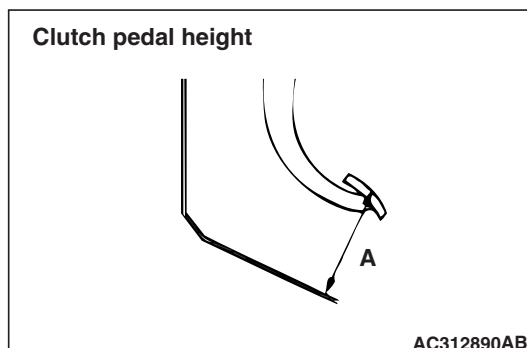
Item	Specified lubricant	Quantity
Clutch fluid	Brake Fluid DOT 3 or DOT 4	As required
Pushrod assembly	Rubber grease	As required
Boot	Rubber grease	As required
Release cylinder push rod	mitsubishi genuine grease Part No.0101011	As required

## ON-VEHICLE SERVICE

## CLUTCH PEDAL CHECK AND ADJUSTMENT

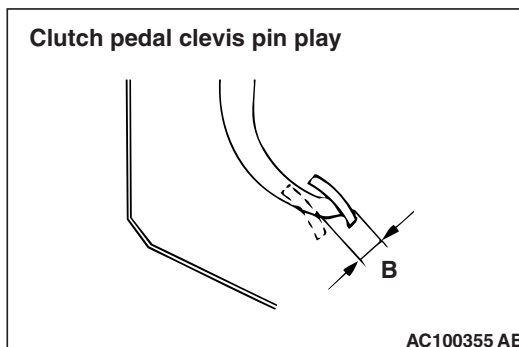
M1211000900285

1. Turn up the carpet, etc. under the clutch pedal.



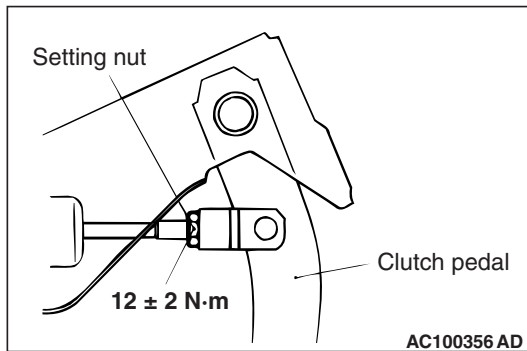
2. Measure the clutch pedal height.

**Standard value (A): 226 – 229 mm**



3. Measure the clutch pedal clevis pin play.

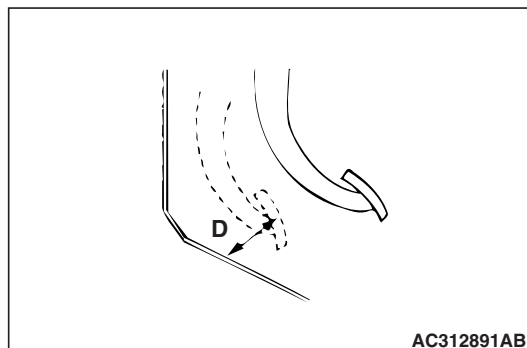
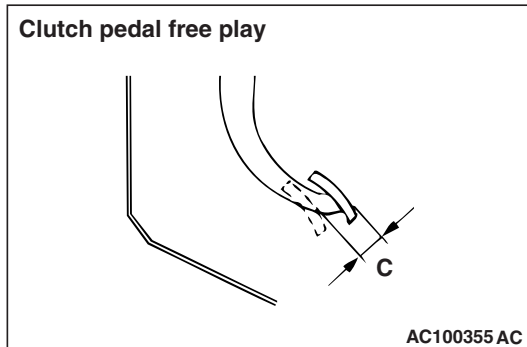
**Standard value (B): 1 – 3 mm**



**CAUTION**

Do not push in the master cylinder pushrod at this time, otherwise the clutch will not operate properly.

4. If the clutch pedal height and clutch pedal clevis pin play are not within the standard value, loosen the setting nut to adjust the clutch pedal height and clevis pin play to the standard value.



5. After completing the adjustments, confirm that the clutch pedal free play (measured at the face of the pedal pad) and the distance between the clutch pedal (the face of the pedal pad) and the clutch pedal stopper when the clutch is disengaged are within the standard value ranges.

**Standard value (C): 4 –13 mm**

**Standard value (D): 30 mm or more**

6. If the clutch pedal free play and the distance between the clutch pedal and the clutch pedal stopper or toeboard when the clutch is disengaged do not agree with the standard values, it is probably the result of either air in the hydraulic system or a faulty master cylinder, release cylinder or clutch. Bleed the air, or disassemble and inspect the master cylinder, release cylinder or clutch.

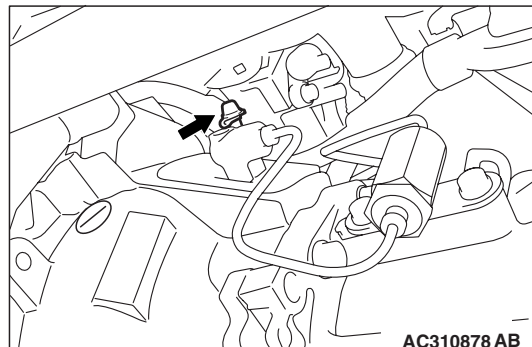
## CLUTCH BLEEDING

M1211001400205

**CAUTION**

Use the specified brake fluid. Do not mix brake fluids.

**Specified fluid: Brake fluid DOT 3 or DOT 4**

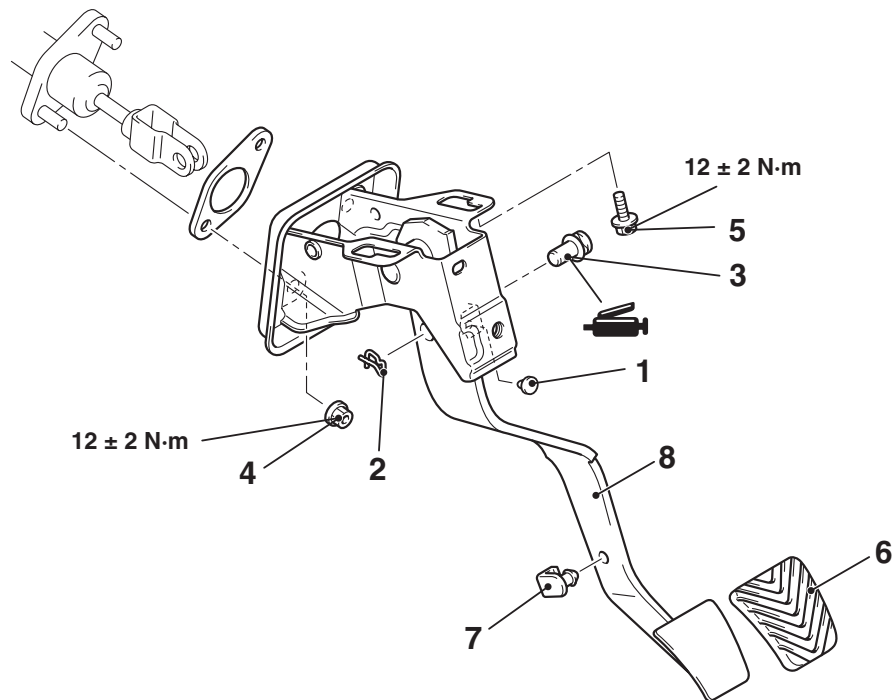


1. Connect a hose with a bottle to the bleeder screw.
2. Open the bleed nipple.
3. Depress the clutch pedal slowly. Open the bleeder screw to let air and brake fluid out. Close the bleeder screw. Release the clutch pedal. Repeat until only brake fluid and no air comes out.
4. Check that the brake fluid reservoir level stays between "MAX" and "MIN" marks throughout the clutch bleeding process.

## CLUTCH PEDAL

## REMOVAL AND INSTALLATION

M1211001600232

**Post-installation Operation**Clutch Pedal Adjustment (Refer to [P.21A-2](#)).

AC310896AB

**Removal steps**

- Instrument panel under cover (Refer to GROUP 52A, Instrument panel [P.52A-2](#)).
- 1. Stopper
- 2. Snap pin
- 3. Clevis pin

**Removal steps (Continued)**

- 4. Clutch master cylinder mounting nut
- 5. Clutch pedal assembly mounting bolt
- 6. Pedal pad
- 7. Pedal stopper
- 8. Clutch pedal assembly

# CLUTCH CONTROL

## REMOVAL AND INSTALLATION

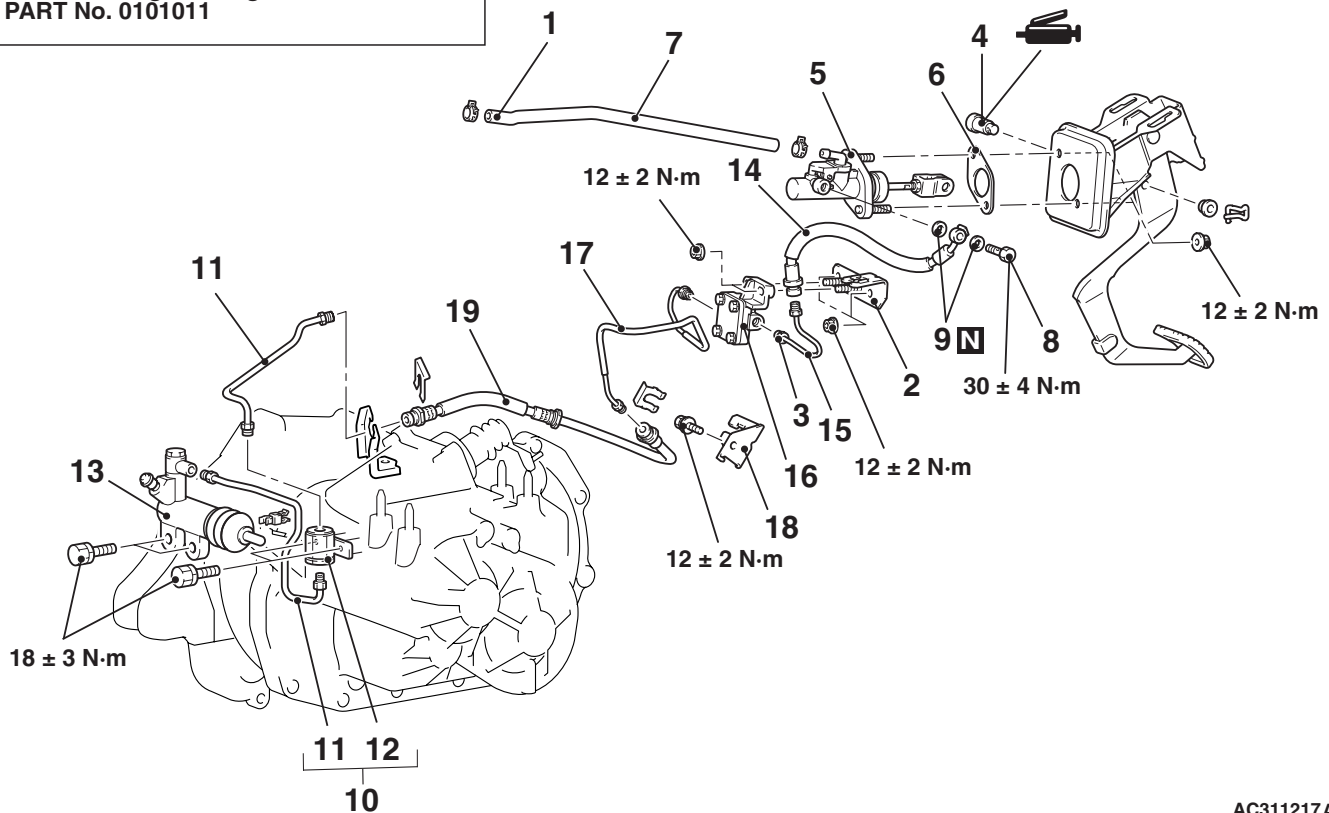
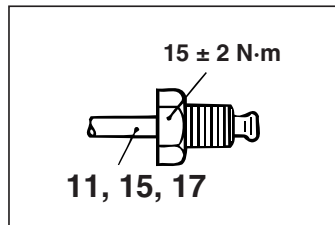
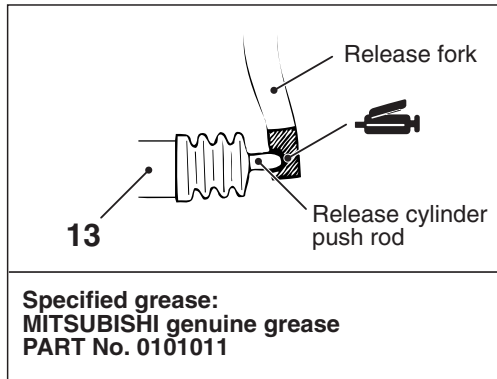
M1211001900255

### Pre-removal Operation

Clutch Fluid Draining

### Post-installation Operation

- Clutch Fluid Supplying
- Clutch Line Bleeding (Refer to [P.21A-3](#)).
- Clutch Pedal Adjustment (Refer to [P.21A-2](#)).



AC311217AB

### Clutch master cylinder removal steps

1. Reservoir hose and brake fluid reservoir connection
2. Clutch damper bracket
3. Clutch tube and clutch damper assembly connection
- Brake master cylinder assembly and brake booster (Refer to GROUP 35A, Master cylinder assembly and brake booster [P.35A-15](#).)
4. Clevis pin

### Clutch master cylinder removal steps (Continued)

5. Clutch master cylinder
6. Sealer
7. Reservoir hose
8. Eye bolt
9. Gasket

### Clutch release cylinder removal steps

10. Clutch tube and clutch orifice assembly
11. Clutch tube

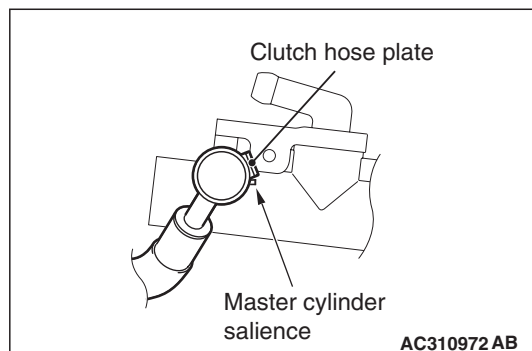
>>B<<

**Clutch release cylinder removal steps (Continued)**

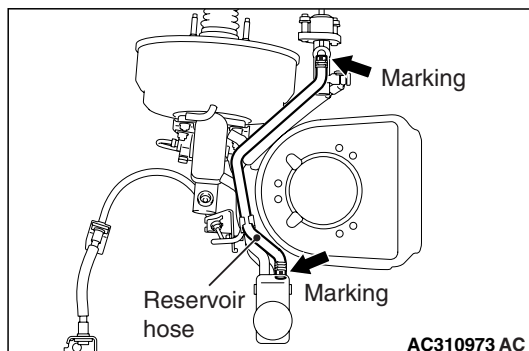
12. Clutch orifice assembly
13. Clutch release cylinder

**Clutch line removal steps**

- >>A<<**
14. Clutch hose
  15. Clutch tube
  16. Clutch damper assembly
  17. Clutch tube
  18. Clutch hose bracket
  19. Clutch hose

**INSATALLATION SERVICE POINT****>>A<< CLUTCH HOSE INSTALLATION**

Install the clutch hose so that the clutch hose plate will touch the master cylinder salience.

**>>B<< RESERVOIR HOSE INSTALLATION**

Install the reservoir hose with the marking as shown in the illustration.

**INSPECTION**

M1211002000158

- Check the master cylinder or clutch hose for fluid leakage.
- Check the clutch hose or tube for cracks or clogging.

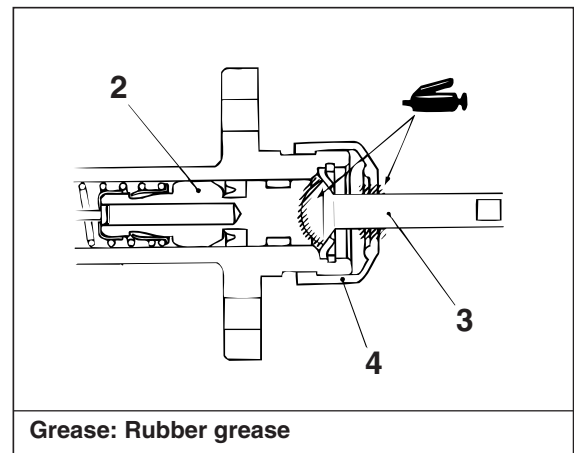
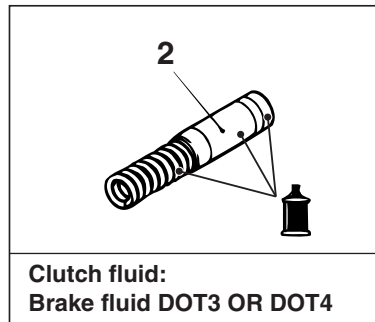
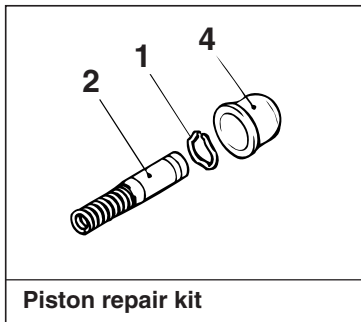
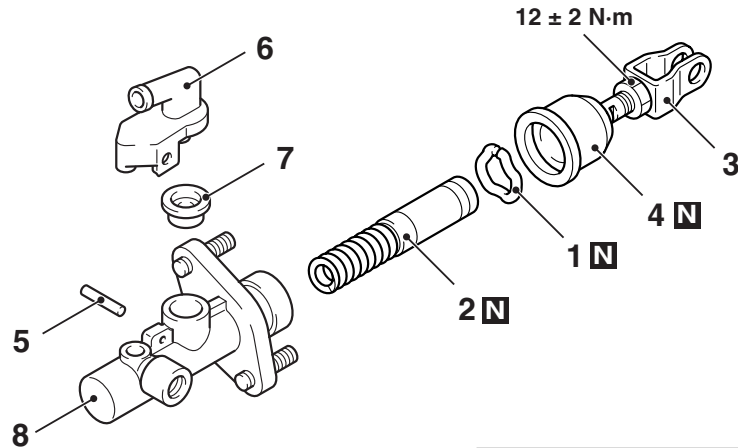
## DISASSEMBLY AND REASSEMBLY

M1211002100230

### CLUTCH MASTER CYLINDER

#### ⚠ CAUTION

Do not disassemble the piston assembly.



AC311129 AB

#### Disassembly steps

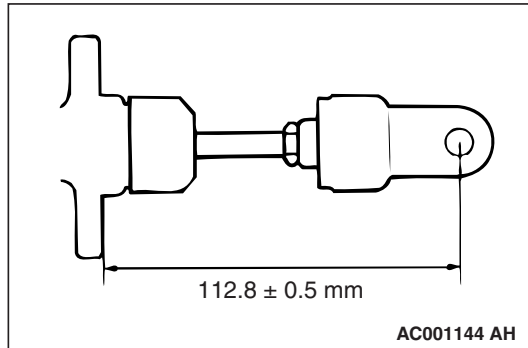
- >>A<<
1. Piston stopper ring
  2. Piston assembly
  3. Pushrod assembly
  4. Boot

#### Disassembly steps (Continued)

5. Spring pin
6. Nipple
7. Seal
8. Master cylinder body

## REASSEMBLY SERVICE POINT

## &gt;&gt;A&lt;&lt; PUSHROD ASSEMBLY INSTALLATION



Set the length of the pushrod assembly to the dimension shown to make the adjustment of the clutch pedal easier.

## INSPECTION

M1211002200152

- Check inside the cylinder body for rust and scars.
- Check the piston for rust and scars.
- Check the pipe connection for clogging.