

GROUP 52A

INTERIOR

CONTENTS

| | | | |
|---|---------------|-------------------------------------|---------------|
| SPECIAL TOOL | 52A-2 | INSIDE REARVIEW MIRROR | 52A-20 |
| INSTRUMENT PANEL ASSEMBLY* | 52A-2 | FRONT SEAT ASSEMBLY* | 52A-21 |
| REMOVAL AND INSTALLATION | 52A-2 | REMOVAL AND INSTALLATION | 52A-21 |
| DISASSEMBLY AND REASSEMBLY | 52A-8 | INSPECTION | 52A-22 |
| | | DISASSEMBLY AND REASSEMBLY | 52A-23 |
| FLOOR CONSOLE ASSEMBLY | 52A-9 | SECOND SEAT ASSEMBLY | 52A-27 |
| REMOVAL AND INSTALLATION | 52A-9 | REMOVAL AND INSTALLATION | 52A-27 |
| | | DISASSEMBLY AND REASSEMBLY | 52A-29 |
| INTERIOR TRIM | 52A-10 | THIRD SEAT ASSEMBLY | 52A-35 |
| REMOVAL AND INSTALLATION | 52A-10 | REMOVAL AND INSTALLATION | 52A-35 |
| | | DISASSEMBLY AND REASSEMBLY | 52A-36 |
| DOOR TRIM | 52A-12 | FRONT SEAT BELT* | 52A-37 |
| REMOVAL AND INSTALLATION | 52A-12 | REMOVAL AND INSTALLATION | 52A-37 |
| DISASSEMBLY AND REASSEMBLY | 52A-14 | INSPECTION | 52A-38 |
| TAILGATE TRIM | 52A-16 | REAR SEAT BELT | 52A-39 |
| REMOVAL AND INSTALLATION | 52A-16 | REMOVAL AND INSTALLATION | 52A-39 |
| HEADLINING* | 52A-17 | | |
| REMOVAL AND INSTALLATION | 52A-17 | | |
| DISASSEMBLY AND REASSEMBLY | 52A-19 | | |

WARNINGS REGARDING SERVICING OF SUPPLEMENTAL RESTRAINT SYSTEM (SRS) EQUIPPED VEHICLES

WARNING

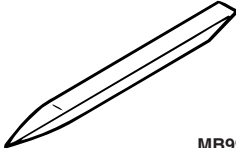
- (1) Improper service or maintenance of any component of the SRS, or any SRS-related component, can lead to personal injury or death to service personnel (from inadvertent firing of the air bag) or to the driver (from rendering the SRS inoperative).
- (2) Service or maintenance of any SRS component or SRS-related component must be performed only at an authorized MITSUBISHI dealer.
- (3) MITSUBISHI dealer personnel must thoroughly review this manual, and especially its GROUP 52B - Supplemental Restraint System (SRS) before beginning any service or maintenance of any component of the SRS or any SRS-related component.

NOTE

The SRS includes the following components: front impact sensors, SRS-ECU, SRS warning lamp, air bag module, clock spring and interconnecting wiring. Other SRS-related components (that may have to be removed/installed in connection with SRS service or maintenance) are indicated in the table of contents by an asterisk (*).

SPECIAL TOOL

M1521000600350

| Tool | Tool number | Name | Use |
|---|-------------|------------------|-------------------------------|
|  MB990784 | MB990784 | Ornament remover | Removal of switch, trim, etc. |

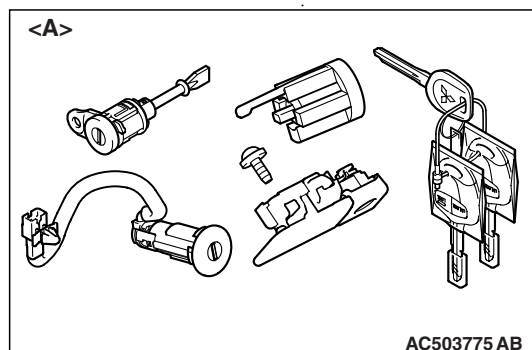
INSTRUMENT PANEL ASSEMBLY

REMOVAL AND INSTALLATION

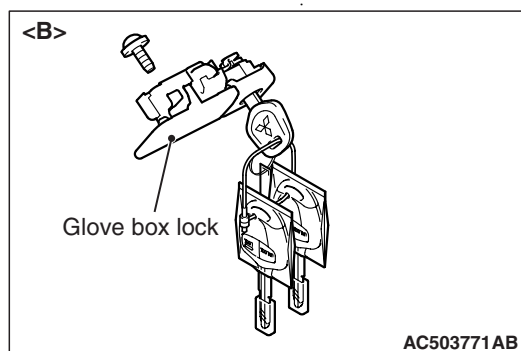
M1521001700974

⚠ WARNING

For removal and installation of the passenger's side air bag module, always observe the service procedures described in GROUP 52B, Driver's, Front Passenger's Air Bag Module(s) and Clock Spring [P.52B-334](#).


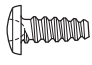
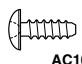
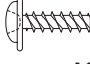


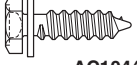


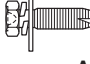

⚠ CAUTION

When the glove box lid lock cylinder is replaced by key set of illustration <A>, register the encrypted code with the bar code on the ignition key in the key set. Refer to GROUP 54A, Encrypted Code Registration Criteria Table <Vehicles for Hong Kong and Singapore> [P.54A-9](#).



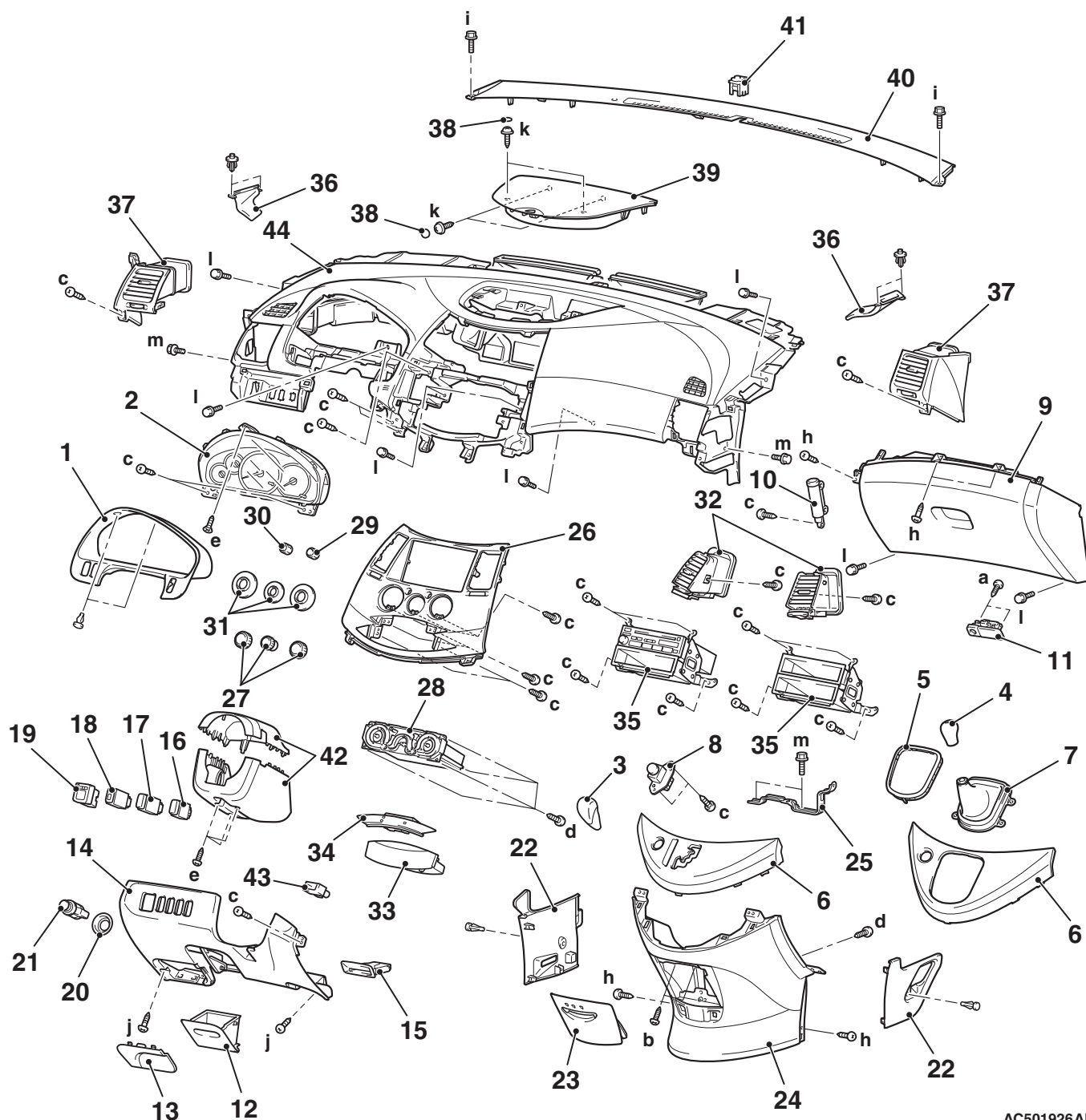
When replacing by the glove box lock of illustration , do not register the encrypted code with the bar code on the ignition key supplied simultaneously.

The following bolts and screws are used for installing the instrument panel. Bolts and screws are indicated as marks shown in the illustration in the sections of "Removal and Installation" and "Disassembly and Reassembly."

| Name | Symbol | Size (D × L) mm | Colour | Shape |
|-------------------------|---------------|------------------------|---------------|---|
| Machine flange screw | a | 4 × 12 | Black |  AC302569 |
| Tapping screw | b | 4 × 10 | - |  AC304084 |
| | c | 4 × 12 | - |  AC104931 |
| | d | 5 × 12 | - |  AC104436 |
| | e | 5 × 20 | - | |
| | f | 5 × 10 | - |  AC302519 |
| | g | 5 × 12 | Black |  AC104450 |
| | h | 5 × 16 | - | |
| Tapping screw (hexagon) | i | 5 × 16 | - |  AC104425 |
| Washer assembled screw | j | 5 × 16 | - |  AC104420 |
| | k | 5 × 16 | Black |  AC304085 |
| Washer assembled bolt | l | 6 × 16 | - |  AC104430 |
| | m | 6 × 16 | - |  AC104429 |

CAUTION

- Refer to GROUP 52B-SRS Service Precautions [P.52B-5](#) and Driver's, Passenger's Air bag Module(s) and Clock Spring [P.52B-334](#) before removing the passenger side air bag module.
- Do not subject the SRS-ECU to any shocks when removing or installing the instrument panel.



AC501926AB

Removal steps

<<A>>

<>

1. Combination meter bezel assembly
2. Combination meter assembly
3. Selector lever knob <A/T>
4. Gear shift lever knob <M/T>
5. Bezel <M/T>
6. Selector lever panel
7. Shift boot <M/T>
8. Hazard warning lamp switch

<<C>>

Removal steps (Continued)

- Cowl side trim (LH) (Refer to [P.52A-10.](#))
- 9. Glove box assembly
- 10. Glove box damper
- 11. Glove box lock
- Fuel filler lid lock release handle (Refer to GROUP 42, Fuel Filler Lid [P.42-10.](#))

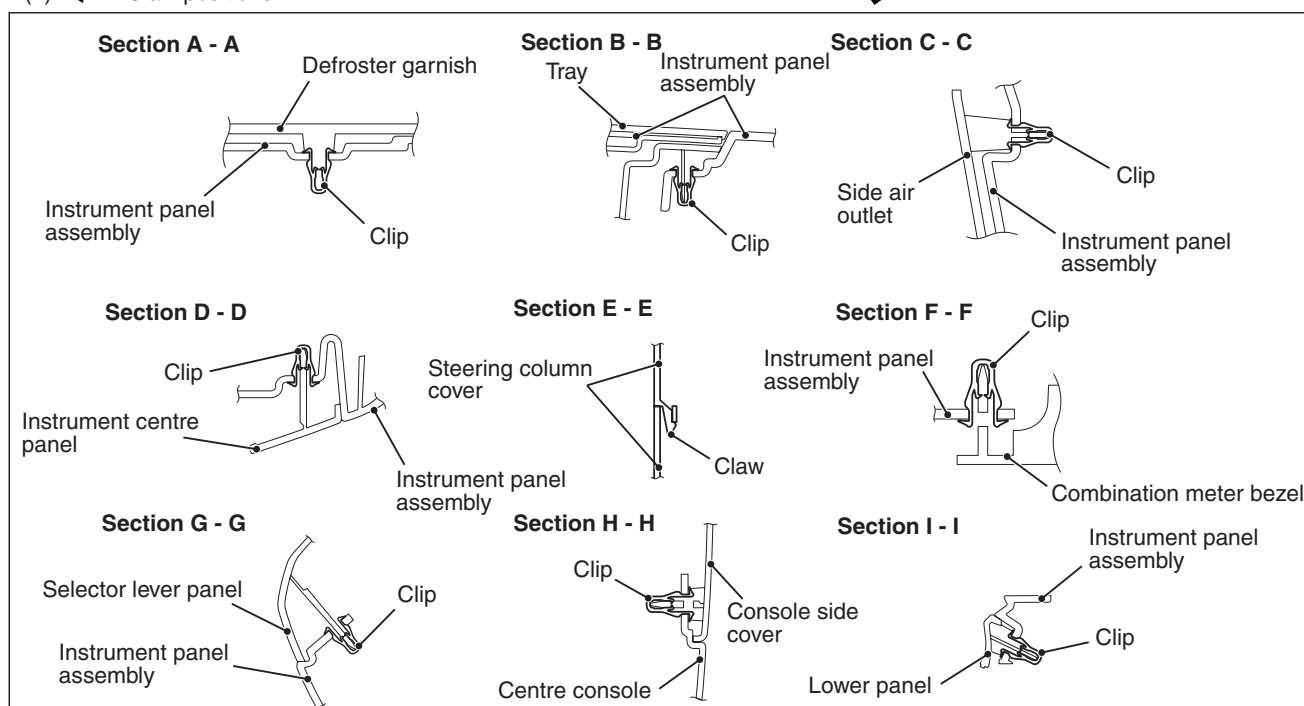
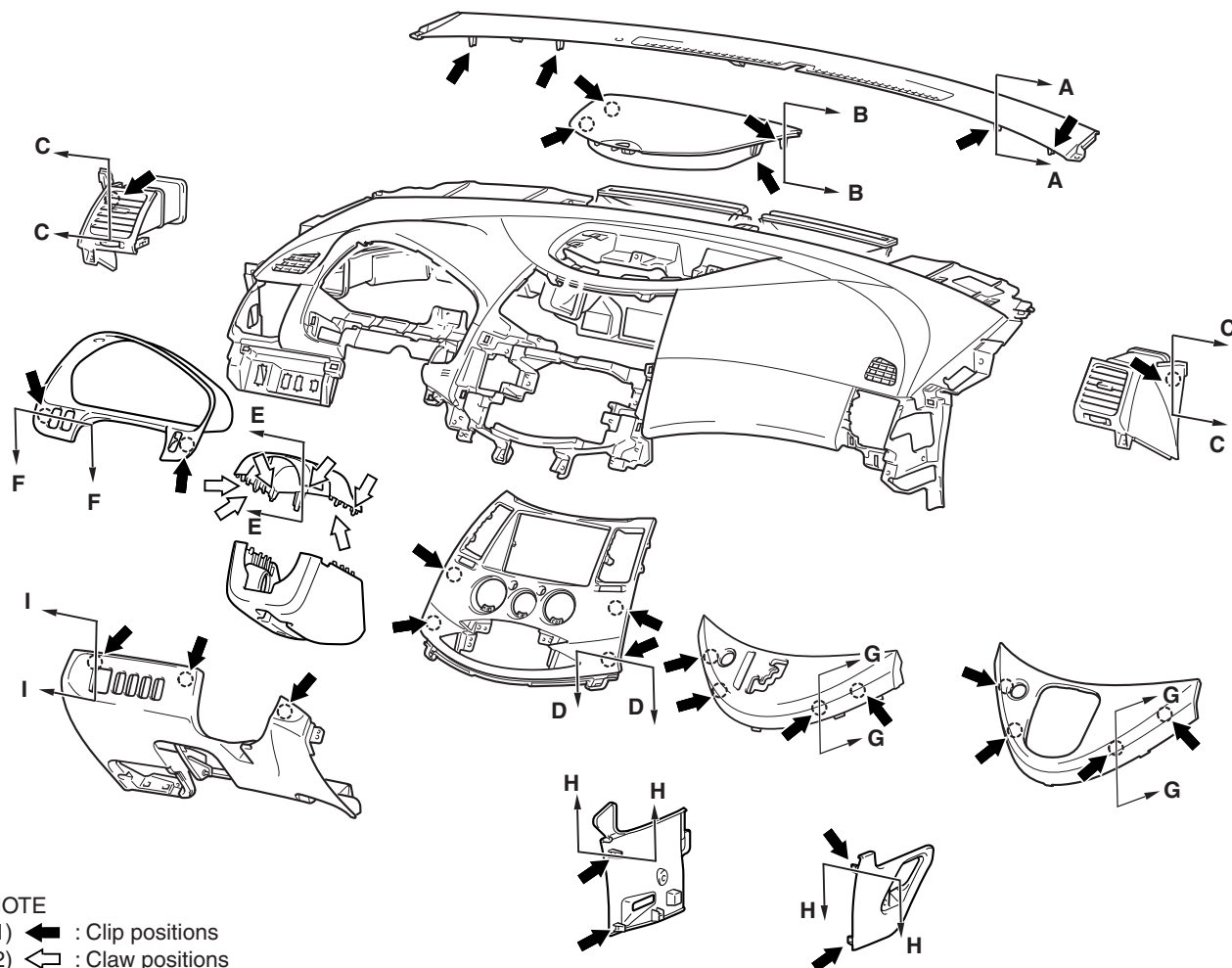
Removal steps (Continued)

12. Parcel box
13. Fuse box lid <L.H. drive vehicles>
14. Lower panel
15. Card holder <R.H. drive vehicles>
16. TCL switch <Vehicles with TCL>
17. Fog lamp switch
18. Headlamp levelling switch
19. Remote controlled mirror switch
20. Cigar lighter protector <R.H. drive vehicles>
21. Cigar lighter <R.H. drive vehicles> <<D>>
22. Console side cover <<D>>
23. Ashtray <<D>>
24. Centre console
25. Console bracket <<D>>
26. Instrument centre panel
27. Heater control lever knob
28. Heater controller assembly
29. Inside/outside air selection switch knob <<D>>
30. Defogger switch knob
31. Panel
32. Air outlet

Removal steps (Continued)

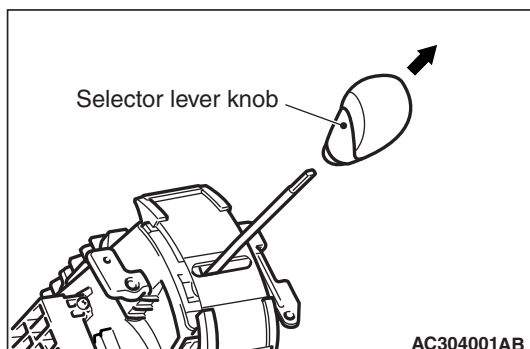
33. Accessory box assembly
34. Clock
35. Radio assembly or box assembly
36. Side defroster duct A
37. Side air outlet
38. Screw cap
39. Tray
40. Defroster garnish
41. Photo sensor
42. Steering column cover
 - Clock spring harness connector
 - Column switch harness connector
 - Key reminder switch harness connector
 - Ignition switch harness connector
 - Steering column shaft (Refer to GROUP 37, Steering Shaft [P.37-17.](#))
 - Air bag module (squib) (passenger's side) harness connector
43. Interior temperature sensor
44. Instrument panel assembly

CLIP AND CLAW POSITIONS



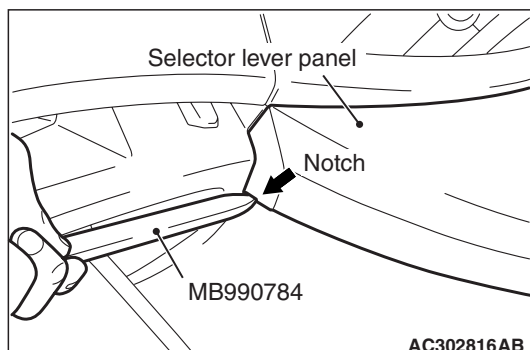
REMOVAL SERVICE POINTS

<<A>> SELECTOR LEVER KNOB REMOVAL



Pull out the selector knob to the direction shown.

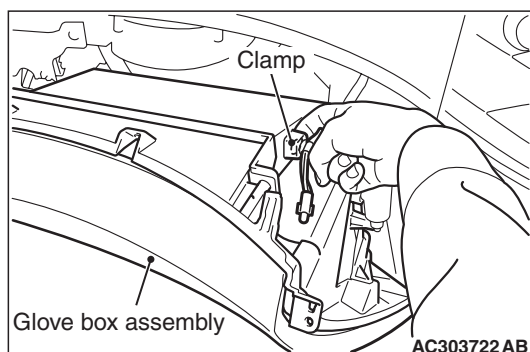
<> SELECTOR LEVER PANEL REMOVAL



Open the glove box door, insert the special tool Ornament Remover (MB990784) into the shown position to remove the selector lever panel.

<<C>> GLOVE BOX ASSEMBLY REMOVAL

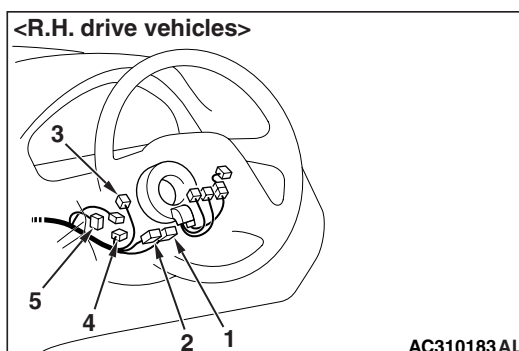
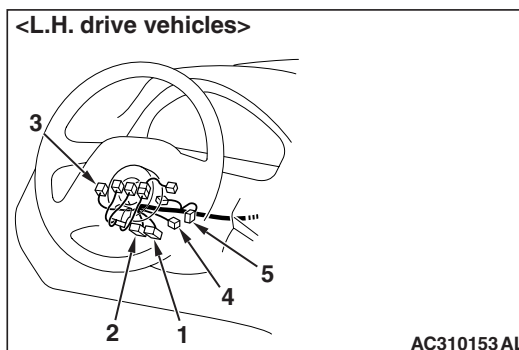
1. Remove the glove box screws and the glove box lamp.



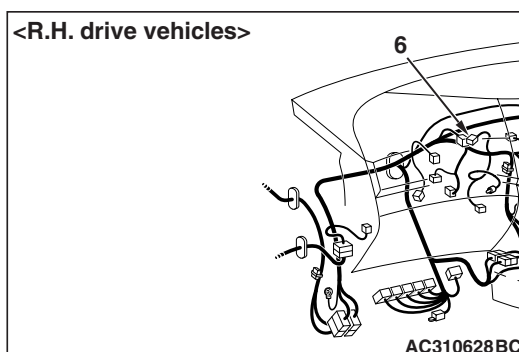
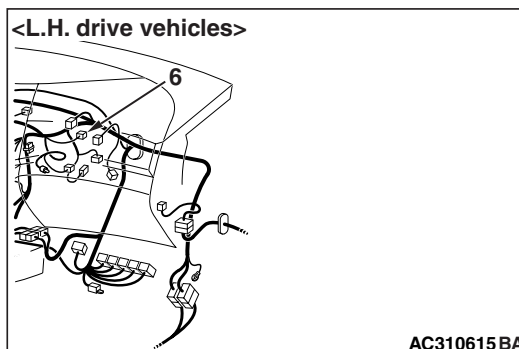
2. Slide the glove box towards you to gain access to the glove box lamp wiring harness clamp. Then release the clamp to remove the glove box assembly.

<<D>> CONNECTOR DISCONNECTION

Disconnect the connectors shown in the illustration.



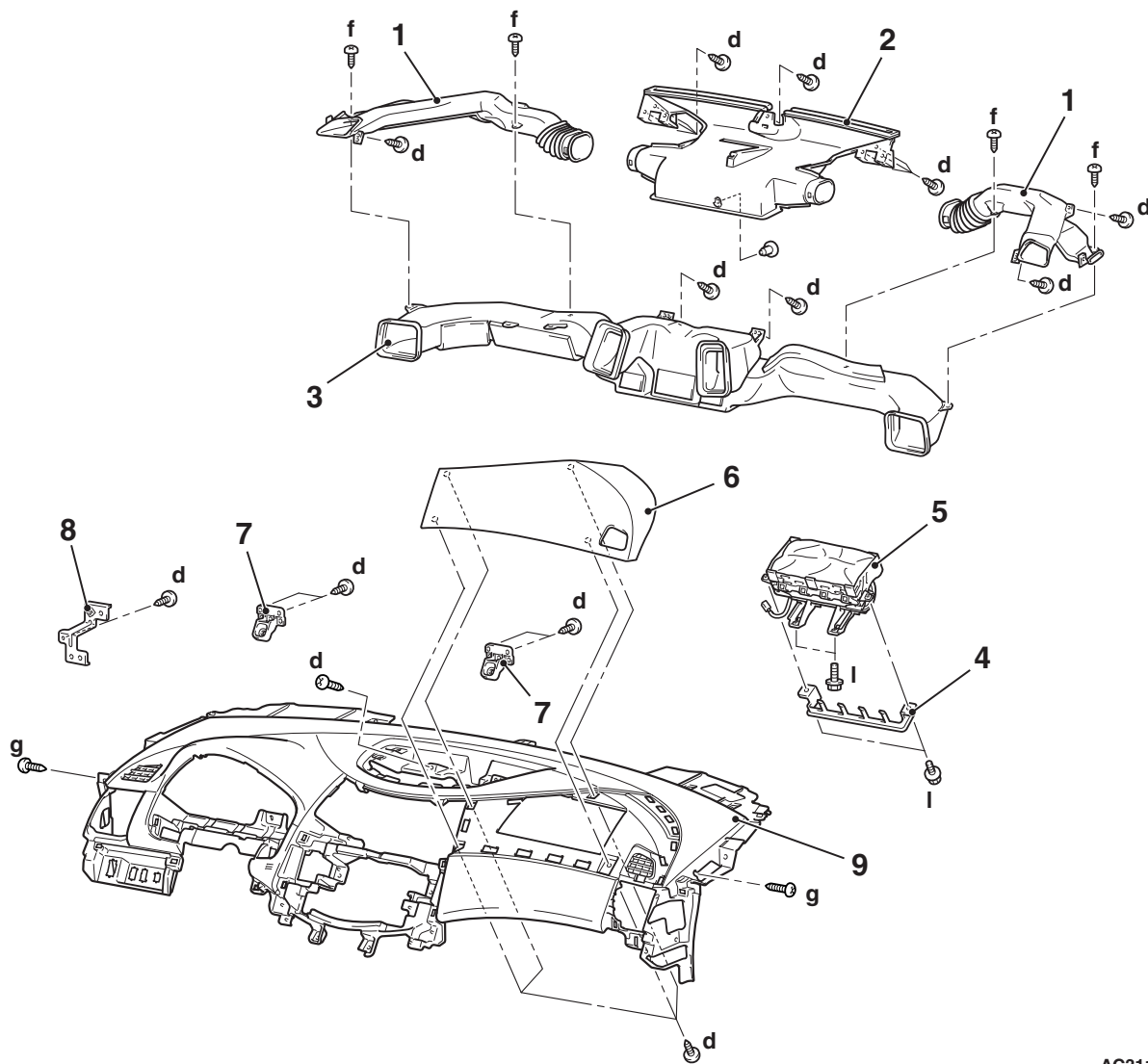
1. Clock spring harness connector (6)
2. Clock spring harness connector (4-Y)
3. Column switch harness connector (10)
4. Key reminder switch harness connector (9)
5. Ignition switch harness connector (6)



6. Air bag module (squib) (passenger's side) harness connector (2-R)

DISASSEMBLY AND REASSEMBLY

M1521001900440



AC311802AD

Disassembly steps

1. Side defroster duct B
2. Defroster nozzle
3. Distribution duct
4. Backbone bracket
5. Passenger's (front) air bag module

Disassembly steps (Continued)

6. Upper side lid
7. Side upper bracket
8. Bracket
9. Instrument panel

<<A>>

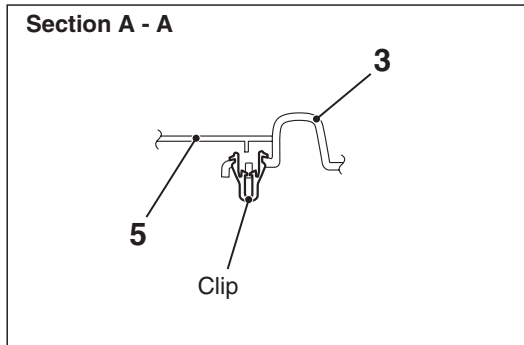
REMOVAL SERVICE POINT**<<A>> PASSENGER'S (FRONT) AIR BAG
MODULE REMOVAL****⚠ WARNING**

- *Never use an electric tester to diagnose the air bag module circuit. Never attempt to disassemble the air bag module.*
- *The removed front passenger's air bag module should be stored in a clean, dry place with the deployment surface facing up.*

FLOOR CONSOLE ASSEMBLY

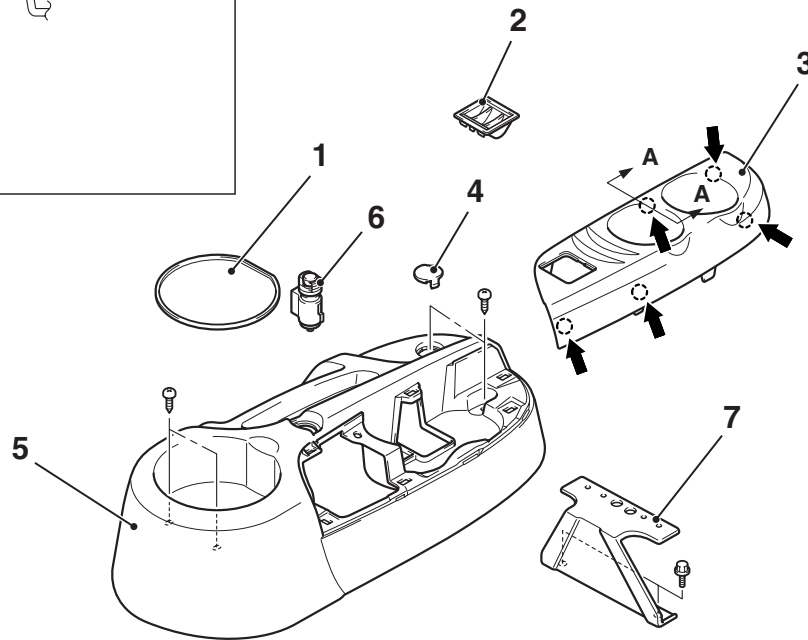
REMOVAL AND INSTALLATION

M1521002200369



NOTE

← : Clip positions



AC313196 AC

Removal steps

1. Floor console box mat
2. Coin holder
3. Floor console panel
4. Floor console plug

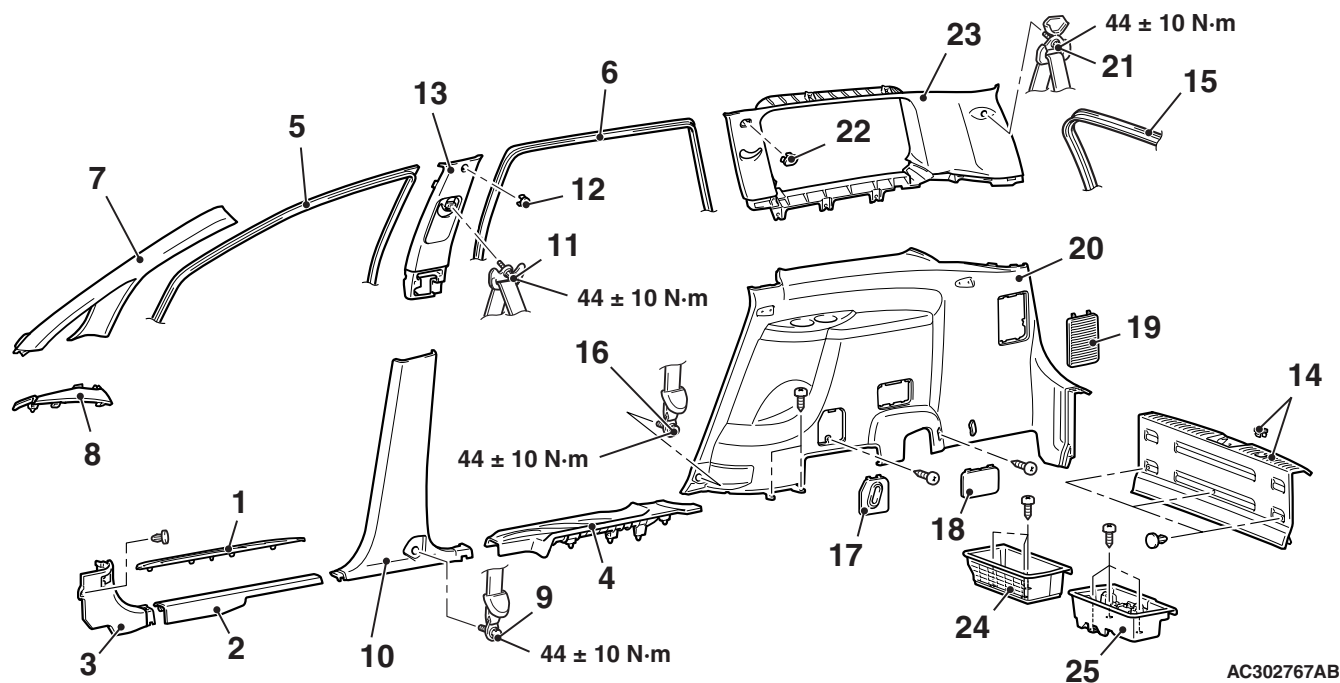
Removal steps (Continued)

5. Floor console
6. Cigar lighter <L.H. drive vehicles>
7. Floor console bracket

INTERIOR TRIM

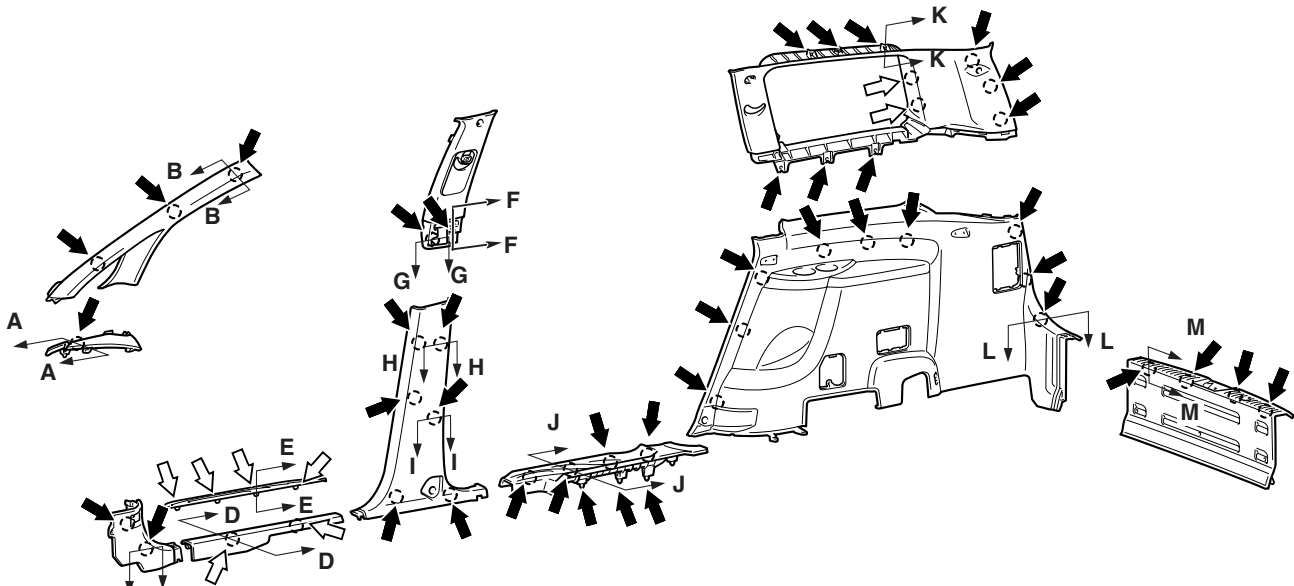
REMOVAL AND INSTALLATION

M1521001100529



- | | |
|--|--|
| 1. Front scuff plate outer | 14. Rear end trim |
| 2. Front scuff plate inner | 15. Tailgate opening trim |
| 3. Cowl side trim | 16. Second seat belt lower anchor bolt |
| 4. Rear scuff plate | 17. Quarter trim plug |
| 5. Front door opening trim | 18. Quarter trim rear lid |
| 6. Rear door opening trim | 19. Quarter side cover |
| 7. Front pillar trim | 20. Quarter trim lower |
| 8. Cowl side trim upper | 21. Third seat belt shoulder anchor bolt |
| 9. Front seat belt lower anchor bolt | 22. Quarter trim cap |
| 10. Centre pillar trim lower | 23. Quarter trim upper |
| 11. Front seat belt shoulder anchor bolt | 24. Rear floor secret box |
| 12. Centre pillar trim plug | 25. Luggage floor box |
| 13. Centre pillar trim upper | |

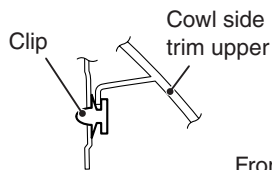
CLIP AND CLAW POSITION



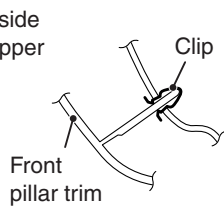
NOTE

- (1) : Clip positions
(2) : Claw positions

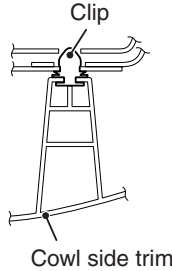
Section A – A



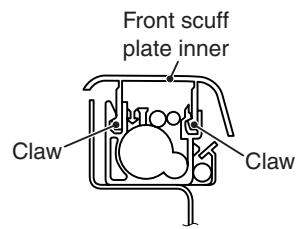
Section B – B



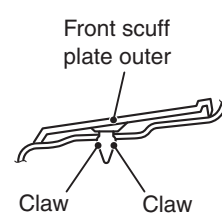
Section C – C



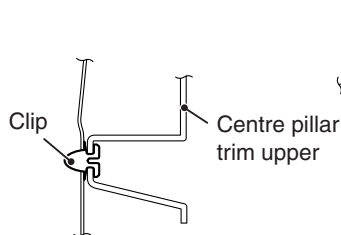
Section D – D



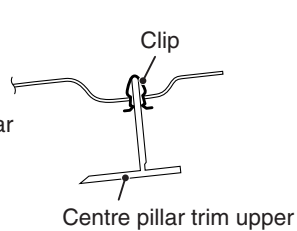
Section E – E



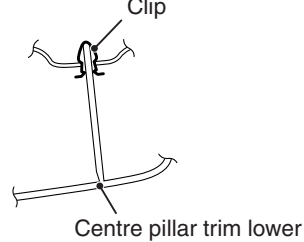
Section F – F



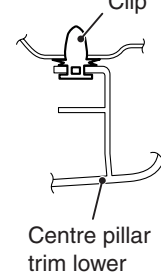
Section G – G



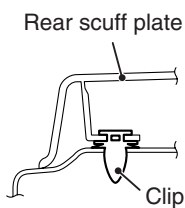
Section H – H



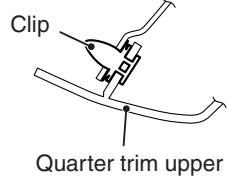
Section I – I



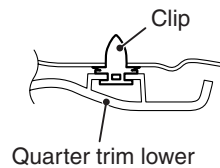
Section J – J



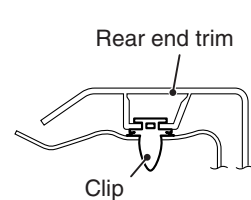
Section K – K



Section L – L



Section M – M

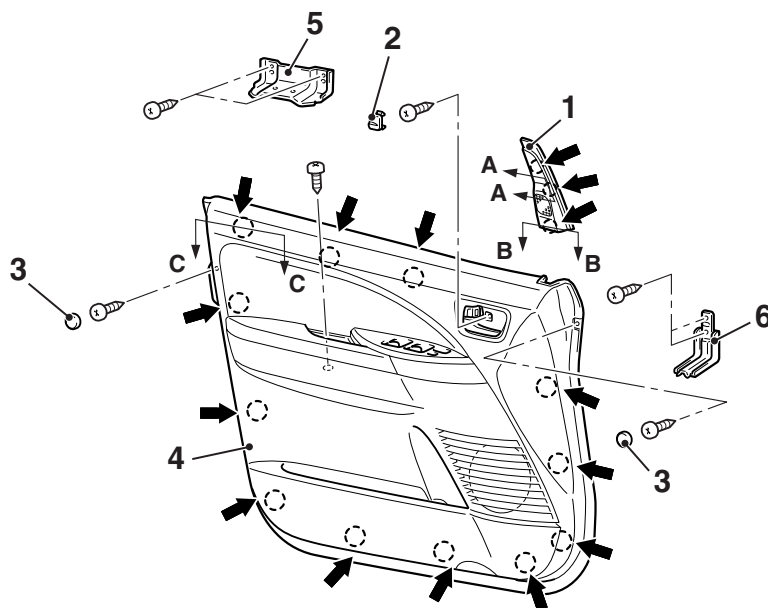


DOOR TRIM

REMOVAL AND INSTALLATION

M1521006400268

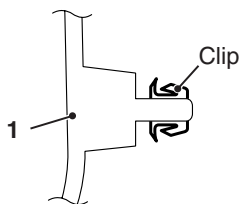
<Front door trim>



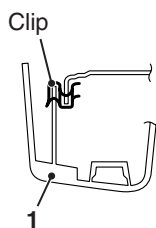
NOTE

: Clip positions

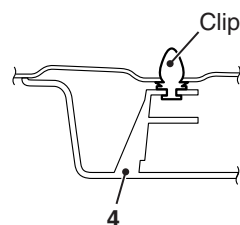
Section A – A



Section B – B



Section C – C



AC310945AC

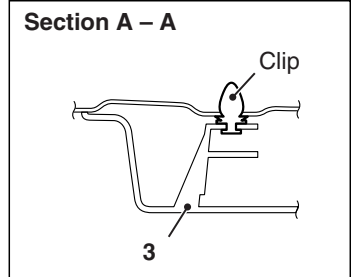
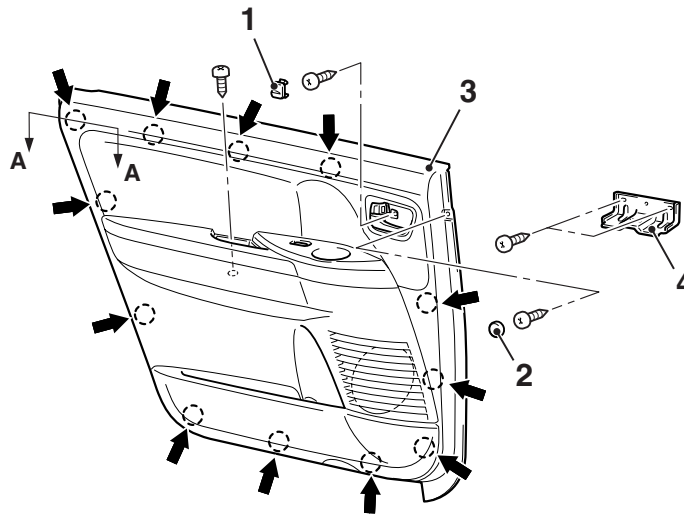
Removal steps

- <<A>>
1. Front door sash trim
 2. Inside door handle screw cap
 3. Door trim screw cap
- <> >>A<<
4. Front door trim

Removal steps (Continued)

5. Pull handle bracket (driver's side)
6. Front door arm rest bracket (passenger's side)

<Rear door trim>



NOTE

← : Clip positions

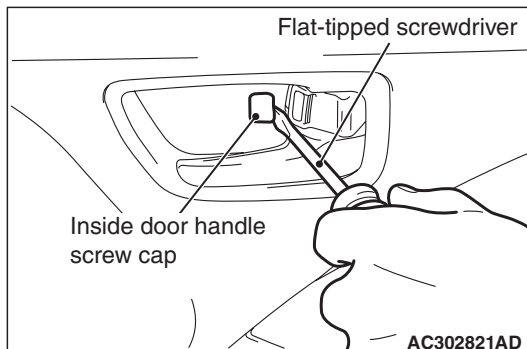
AC310795 AC

- <<A>>
- Removal steps**
1. Inside door handle screw cap
 2. Door trim screw cap

- <> >>A<<
- Removal steps (Continued)**
3. Rear door trim
 4. Pull handle bracket

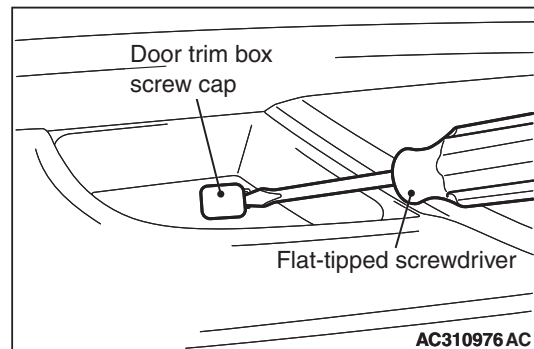
REMOVAL SERVICE POINTS

<<A>> INSIDE DOOR HANDLE SCREW CAP REMOVAL

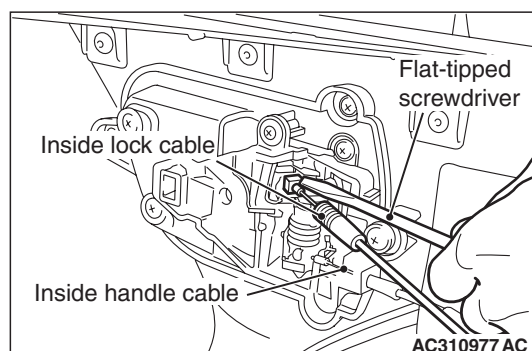


Insert a flat-tipped screwdriver as shown to remove the inside door handle screw cap.

<> FRONT/REAR DOOR TRIM REMOVAL



1. Insert a flat-tipped screwdriver as shown to remove the door trim box screw cap.



INSTALLATION SERVICE POINT

>>A<< FRONT/REAR DOOR TRIM INSTALLATION

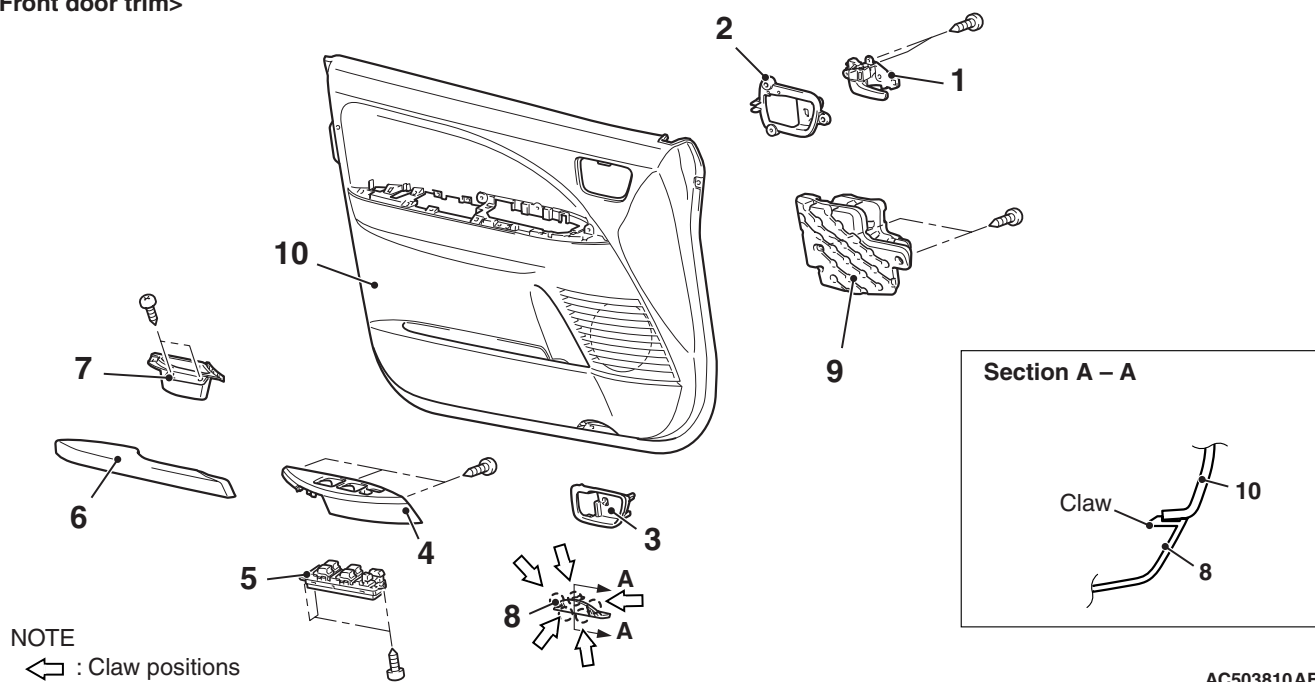
When the power window switch is removed or replaced, make the power windows learn the fully closed position (Refer to GROUP 42, Door Glass and Regulator P.42-39 <Except vehicles for Hong Kong and Singapore>, P.42-41 <Vehicles for Hong Kong and Singapore>).

2. Use a flat-tipped screwdriver as shown to remove the inside lock cable and the inside handle cable. Then remove the door trim.

DISASSEMBLY AND REASSEMBLY

M1521006900111

<Front door trim>



Disassembly steps

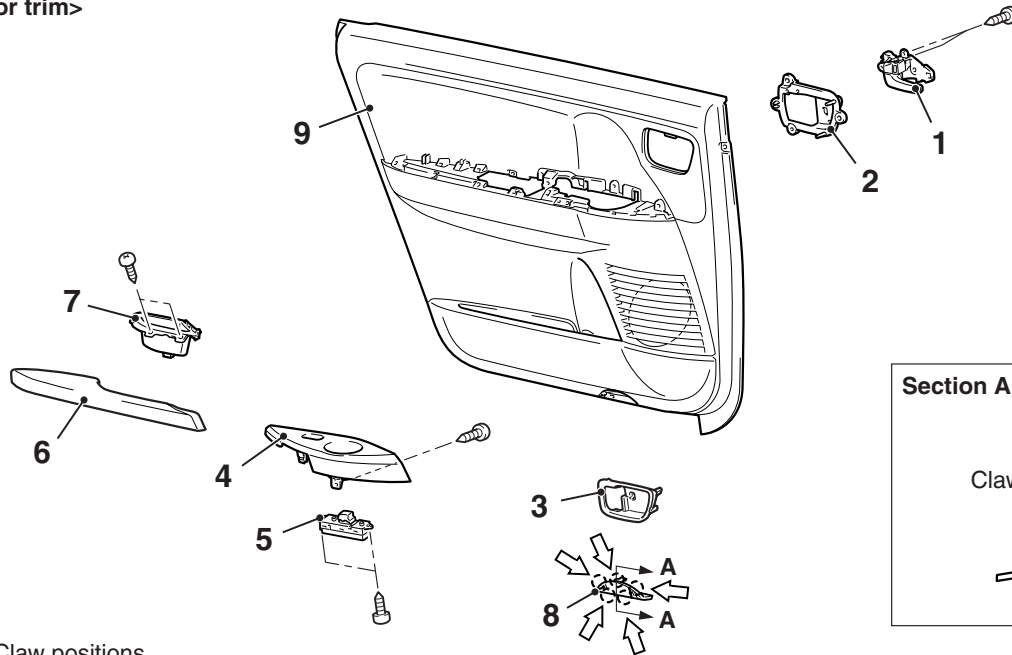
- >>A<<
1. Inside door handle
 2. Support panel
 3. Inside handle bezel
 4. Power window switch panel
 5. Power window switch

Disassembly steps (Continued)

6. Front door armrest
7. Door trim box
8. Front door lamp lens
9. Front door panel inner core
10. Front door trim

AC503810AB

<Rear door trim>



NOTE

↔ : Claw positions

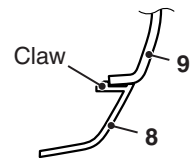
Disassembly steps

- >>A<<
1. Inside door handle
 2. Support panel
 3. Inside handle bezel
 4. Power window switch panel
 5. Power window switch

Disassembly steps (Continued)

6. Rear door armrest
7. Door trim box
8. Rear door lamp lens
9. Rear door trim

Section A – A



AC310985 AC

REASSEMBLY SERVICE POINT

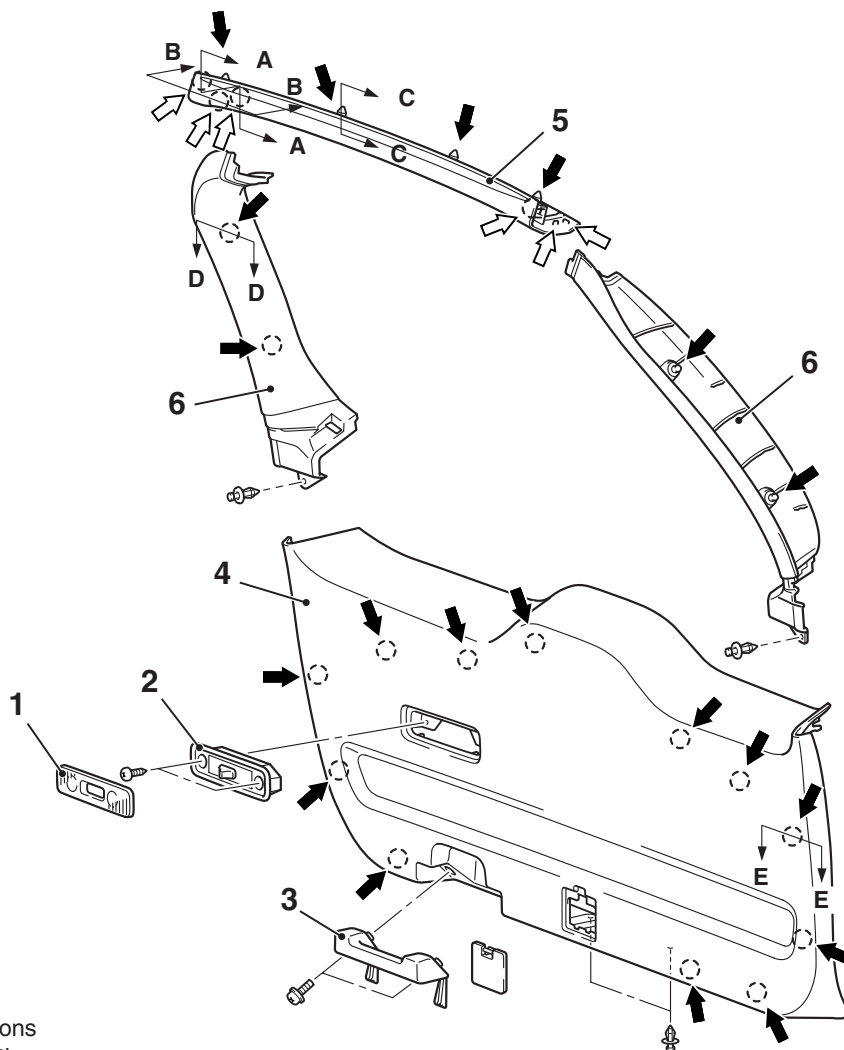
>>A<< INSIDE DOOR HANDLE REASSEMBLY

After removing the door inside handle, check it
(Refer to GROUP42, On-vehicle Service [P.42-33](#)).

TAILGATE TRIM

REMOVAL AND INSTALLATION

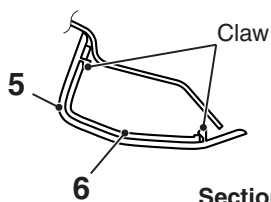
M1521006500146



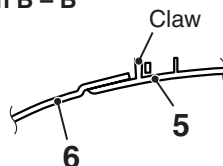
NOTE

- (1) : Clip positions
 (2) : Claw positions

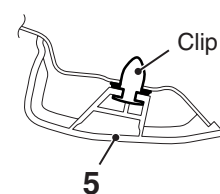
Section A – A



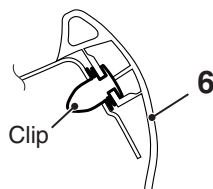
Section B – B



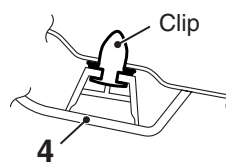
Section C – C



Section D – D



Section E – E



AC303037AE

Removal steps

1. lens
2. Luggage room lamp
3. Tailgate grip

Removal steps (Continued)

4. Lower tailgate trim
5. Upper tailgate trim
6. Tailgate opening side trim

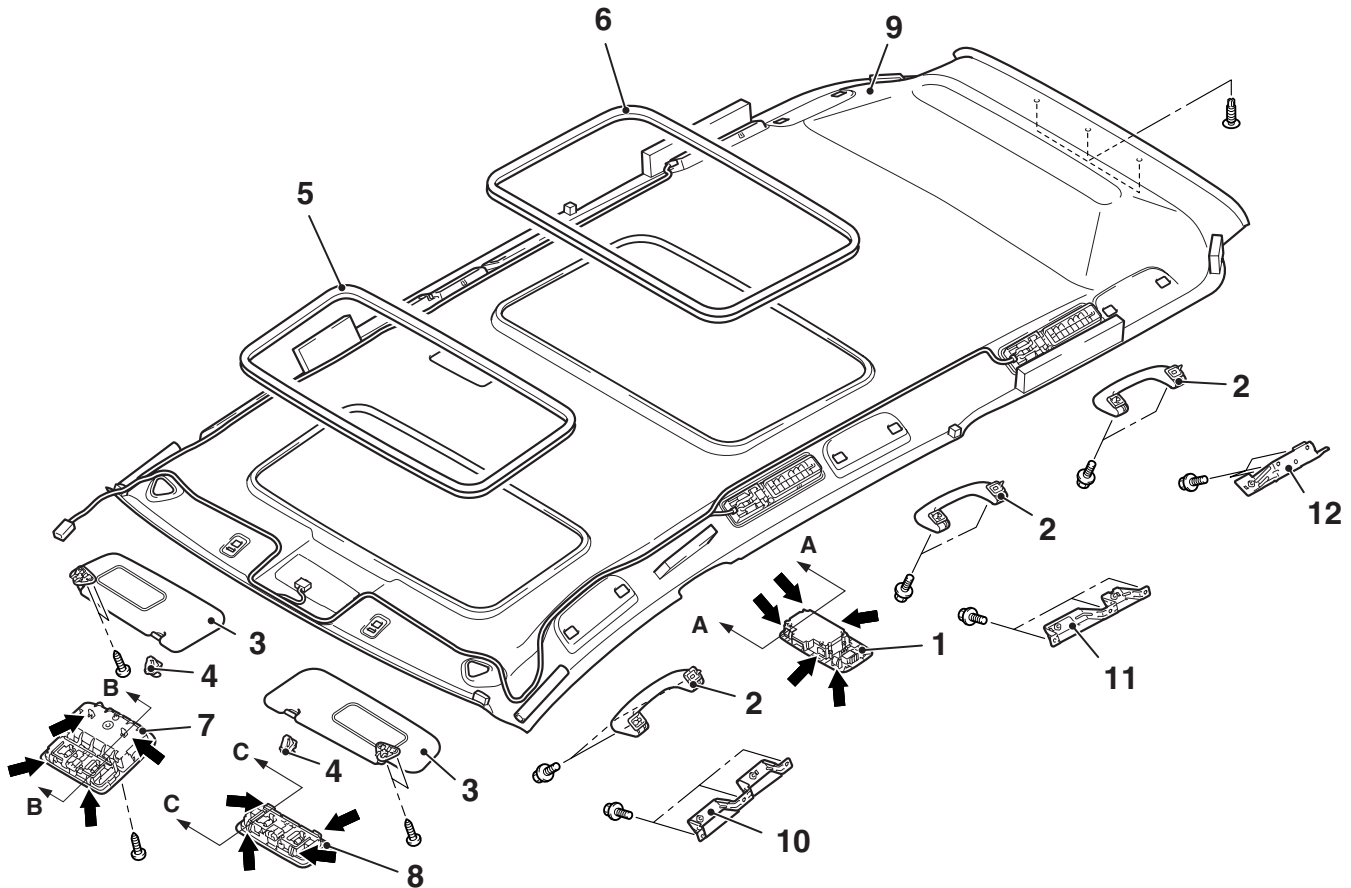
HEADLINING

REMOVAL AND INSTALLATION

M1521001400423

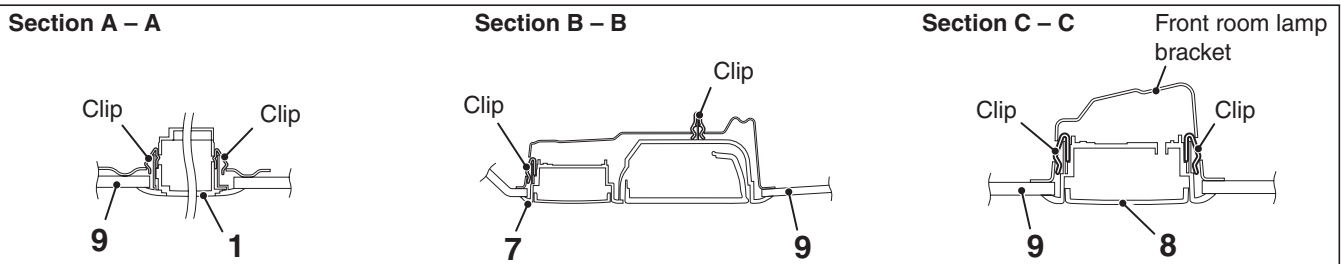
CAUTION

For the removal of the headlining, refer to GROUP 52B, Service Precautions [P.52B-5](#) and Side and Curtain Air Bag Module [P.52B-342](#).



NOTE

← : Clip positions



AC311006 AC

Removal steps

- Third seat assembly (Refer to [P.52A-35](#)) <<A>>
- Quarter trim upper, centre pillar trim upper, front pillar trim (Refer to [P.52A-10](#)) <>
- 1. Rear heater controller assembly <Vehicles with rear heater, rear cooler or dual automatic A/C> <>
- 2. Roof inside assist grip <>
- 3. Sun visor <<C>>

Removal steps (Continued)

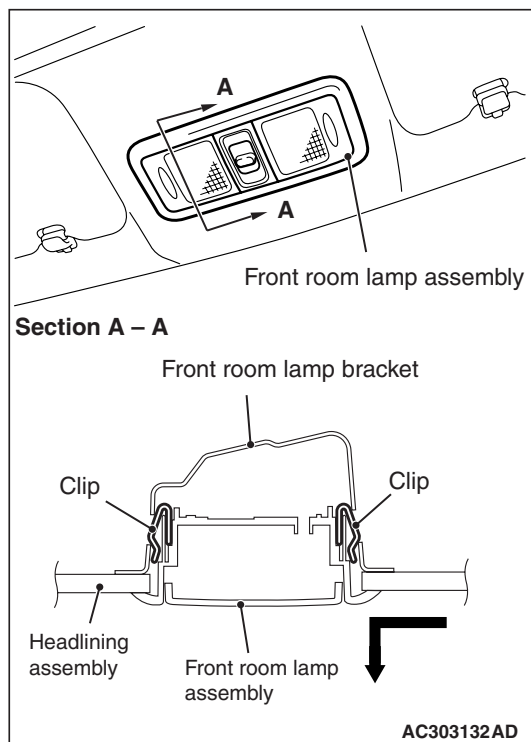
- 4. Sun visor holder
- 5. Sunroof lid inner weather <Vehicles with sunroof>
- 6. Sunroof lid inner weather strip rear <Vehicles with sunroof>
- 7. Front room lamp assembly <Vehicles without sunroof>
- 8. Front room lamp assembly <Vehicles with sunroof>
- 9. Headlining assembly

Removal steps (Continued)

10. Assist grip bracket front
11. Assist grip bracket centre
12. Assist grip bracket rear

REMOVAL SERVICE POINTS**<<A>> SUN VISOR HOLDER REMOVAL**

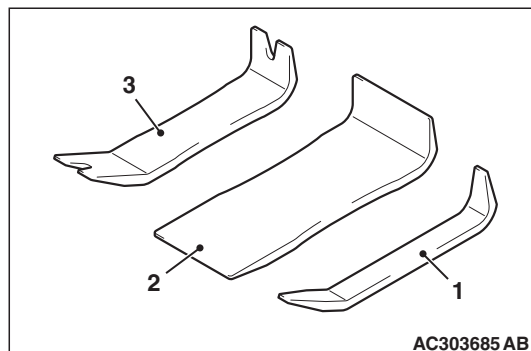
Use a flat-tipped screwdriver to disengage the tab of the sun visor holder, and remove it using moderate pressure from the forefinger and thumb.

<> FRONT ROOM LAMP ASSEMBLY REMOVAL

Slide down the front room lamp assembly by pushing it forwards to disengage the front room lamp assembly from the front room lamp bracket. Then remove the front room lamp assembly.

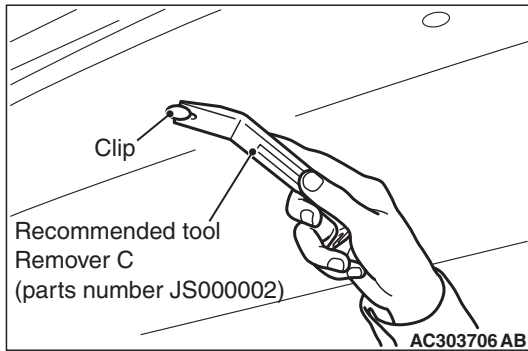
<<C>> HEADLINING ASSEMBLY REMOVAL

The following tools are recommended for removing the headlining assembly.



Ornament remover set (parts number JS000004)

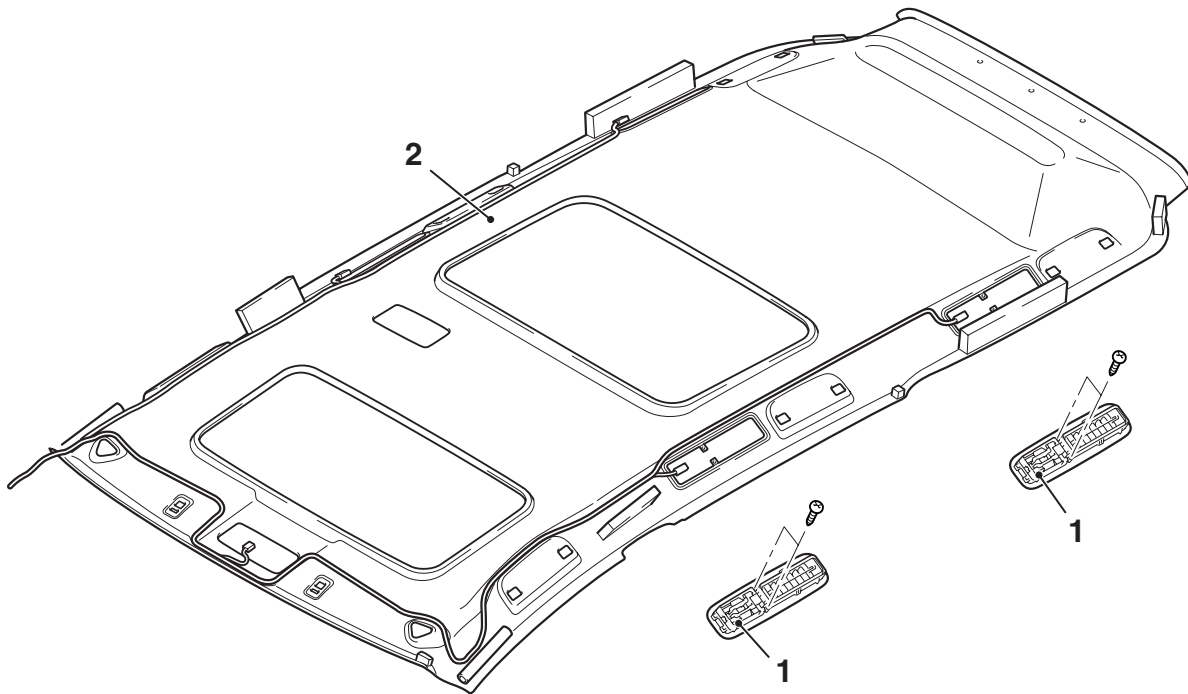
1. Remover A (parts number JS000001)
2. Remover B (parts number JS000003)
3. Remover C (parts number JS000002)



Use the recommended tool Remover C (parts number JS000002) as shown to remove the clip.

DISASSEMBLY AND REASSEMBLY

M1521009100040



AC311012AB

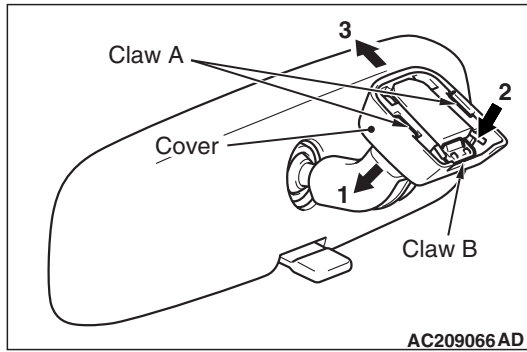
Disassembly steps

1. Rear personal lamp
2. Headlining

INSIDE REARVIEW MIRROR

M1521002600271

REMOVAL SERVICE POINT



1. Disengage the claw A and lower the cover toward arrow 1 direction.
2. Push the claw B toward arrow 2 direction to unlock, and pull out the mirror toward arrow 3 direction.

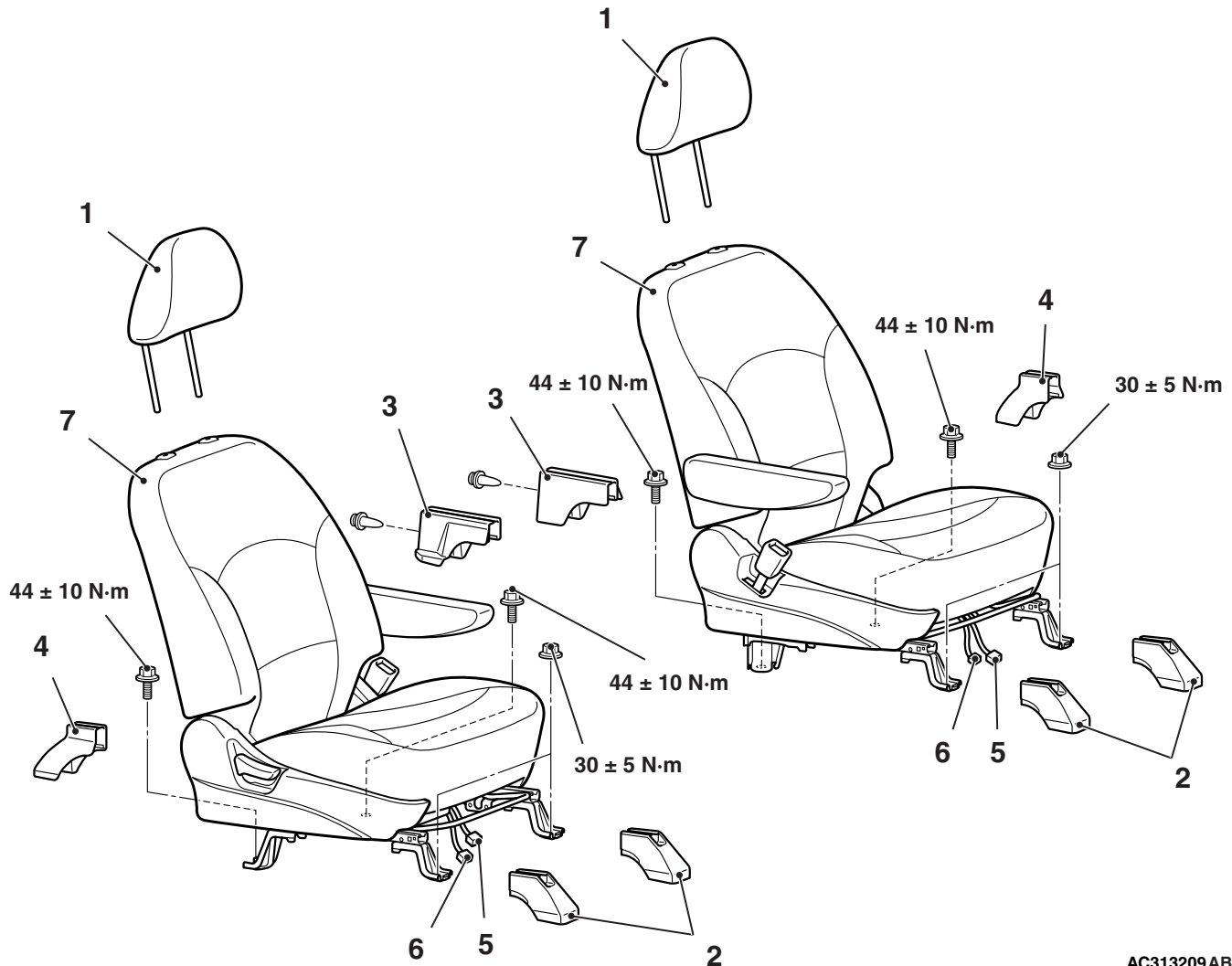
FRONT SEAT ASSEMBLY

REMOVAL AND INSTALLATION

M1522001300786

CAUTION

For the removal of the front seat assembly on vehicles with the side-airbags, refer to GROUP 52B, Service Precautions [P.52B-5](#) and Side and Curtain Air Bag Module [P.52B-342](#).

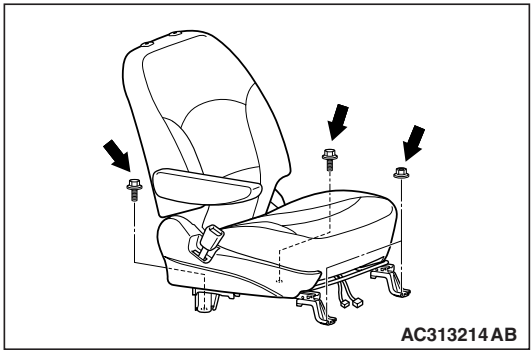


AC313209 AB

1. Headrest
- Removal steps**
2. Seat anchor cover front
3. Seat anchor cover rear inner
4. Seat anchor cover rear outer
5. Seat belt switch harness connector
<Vehicles with seat belt switch>

- Removal steps (Continued)**
6. Side-airbag module (squib)
harness connector <Vehicles with
side-airbag>
 7. Front seat assembly

INSTALLATION SERVICE POINT
>>A<< FRONT SEAT ASSEMBLY INSTAL-
LATION



1. Confirm that the seat slide is locked. Then temporarily tighten all the nuts and bolts with no load applied to the front seat cushion.
2. Tighten all the nuts and bolts to the specified torque.

Tightening torque:

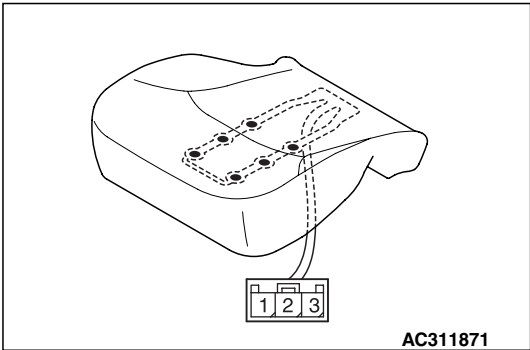
Bolt: $44 \pm 10 \text{ N} \cdot \text{m}$

Nut: $30 \pm 5 \text{ N} \cdot \text{m}$

INSPECTION

M1522005500168

SEAT OCCUPANCY SENSOR
(PASSENGER'S SIDE) CHECK<Vehicles
for Australia and New zealand>



Measure the resistance between terminals.

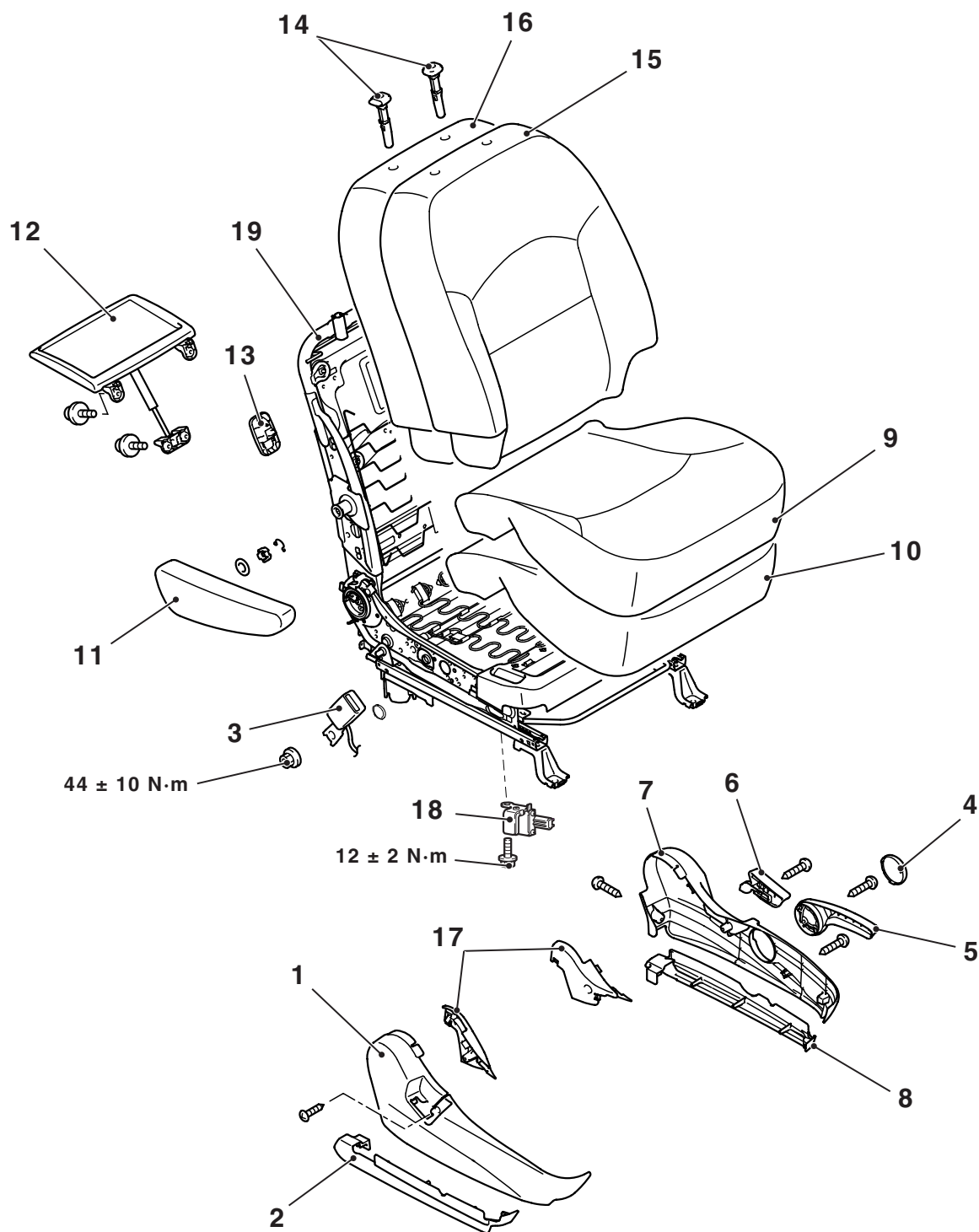
**Standard value: At room temperature 25 ± 10
 $^{\circ}\text{C}$**

| Item | Tester connection | Specified condition |
|--|-------------------|---------------------|
| When a weight of 3 kg is placed on the centre at one of the 6 cells of seat occupancy sensor | 1 -3 | Less than 100 ohms |
| When no weight is placed on the seat occupancy sensor | 1 -3 | Open circuit |

DISASSEMBLY AND REASSEMBLY

M1522001500791

DRIVER'S SIDE AND PASSENGER'S SIDE <EXCEPT FOR HONG KONG AND SINGAPORE>



AC313217 AB

Disassembly steps

1. Shield cover
2. Upper rail cover inner
3. Inner seat belt
4. Height adjuster lever cap

Disassembly steps (Continued)

5. Height adjuster lever
6. Reclining lever
7. Reclining adjuster cover
8. Upper rail cover outer

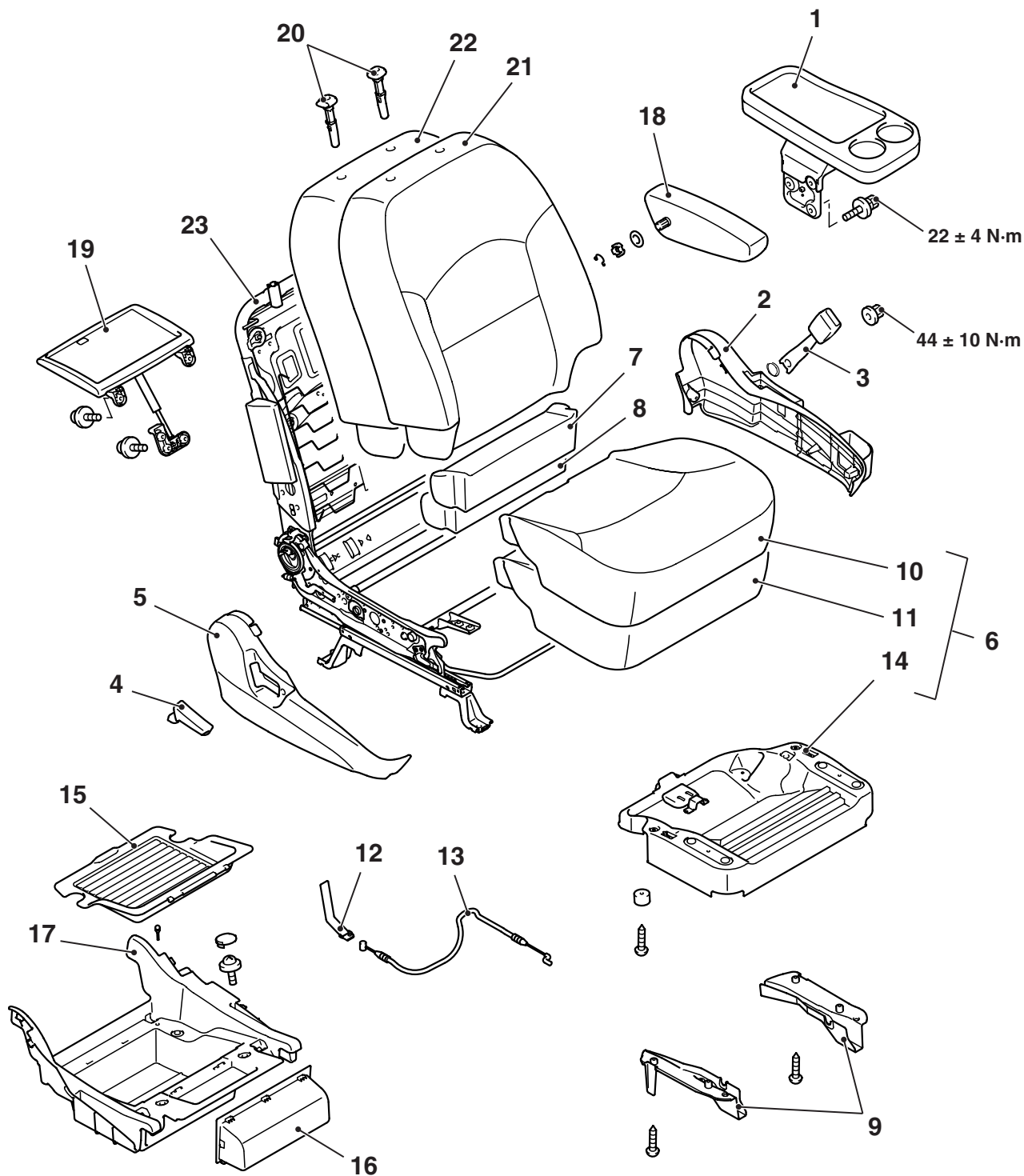
Disassembly steps (Continued)

9. Seat cushion cover <<A>>
10. Seat cushion pad
11. Armrest assembly
12. Personal table assembly <Driver's side (vehicles for Hong Kong and Singapore)>
13. Convenience hook <Driver's side (vehicles for Hong Kong and Singapore)> <>

Disassembly steps (Continued)

14. Headrest restraint guide
15. Seatback cover
16. Seatback pad
17. Inner cover
18. Slide sensor <Driver's side (vehicles for Australia and New Zealand)>
19. Frame assembly

PASSENGER'S SIDE <VEHICLES FOR HONG KONG AND SINGAPORE>



AC313220AB

Disassembly steps

1. Centre table assembly
2. Shield cover
3. Inner seat belt
4. Reclining lever
5. Reclining adjuster cover
6. Seat cushion assembly

Disassembly steps (Continued)

7. Sub seat cushion cover
8. Sub seat cushion pad
9. Cushion protector
10. Seat cushion cover
11. Seat cushion pad
12. band

Disassembly steps (Continued)

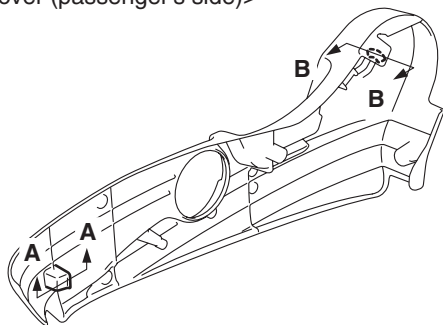
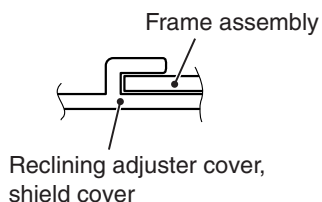
- | | |
|----------------------------|-------|
| 13. cable | |
| 14. Seat cushion frame | <<A>> |
| 15. Under box lid | |
| 16. Under box sub assembly | |
| 17. Under box assembly | <> |
| 18. Armrest assembly | |

Disassembly steps (Continued)

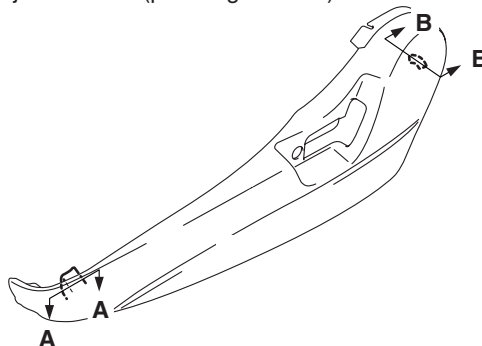
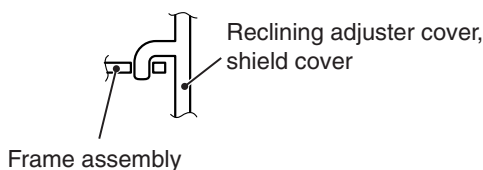
- | |
|------------------------|
| 19. Personal table |
| 20. Headrestrest guide |
| 21. Seatback cover |
| 22. Seatback pad |
| 23. Frame assembly |

CLAW POSITIONS

<Reclining adjuster cover (driver's side),
shield cover (passenger's side)>

**Section A – A**

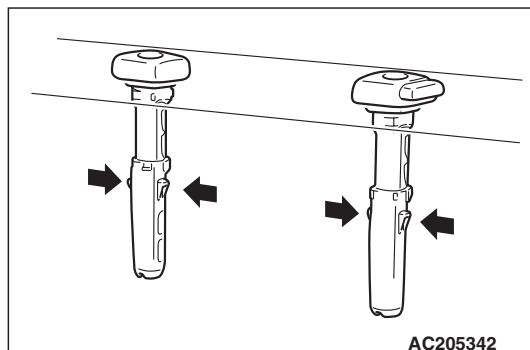
<Shield cover (driver's side),
reclining adjuster cover (passenger's side)>

**Section B – B**

AC302904AD

DISASSEMBLY SERVICE POINTS

<<A>> HEADRESTRAINT GUIDE REMOVAL

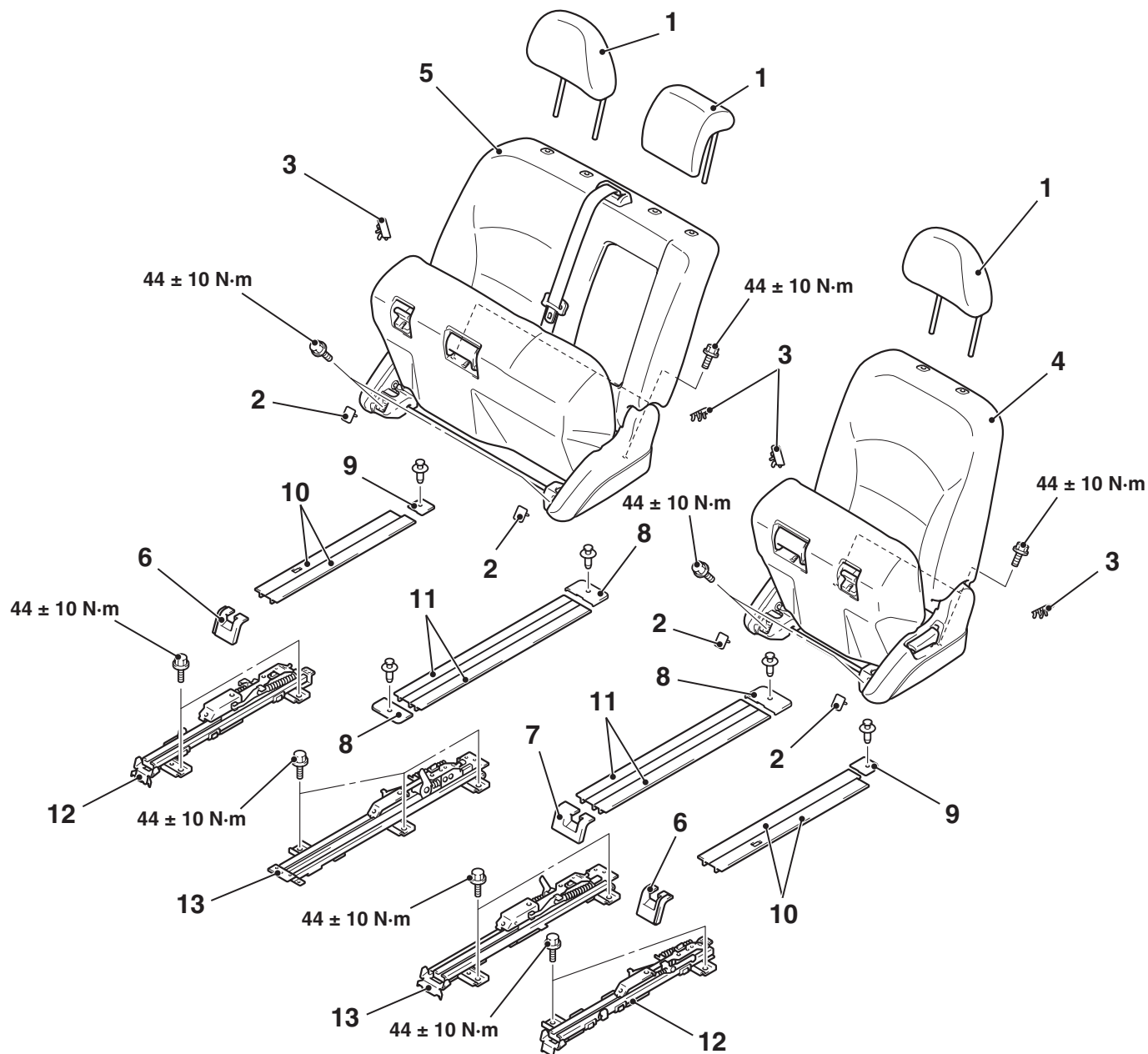
**<> FRAME ASSEMBLY REMOVAL**

Do not remove the side-airbag module from the frame.

M1522002300035

6. Seat anchor cover inner
7. Slide adjuster end cover outer
8. Slide adjuster end cover inner
9. Rail cover outer
10. Rail cover inner
11. Slide adjuster outer
12. Slide adjuster inner

<BENCH SEAT>



AC311806AB

1. Headrest
- Removal steps**
2. Shield inner cover cap front
3. Shield inner cover cap rear
4. Second seat assembly (L.H.)
5. Second seat assembly (R.H.)
- Rear scuff plate (Refer to [P.52A-10.](#))
6. Seat anchor cover outer

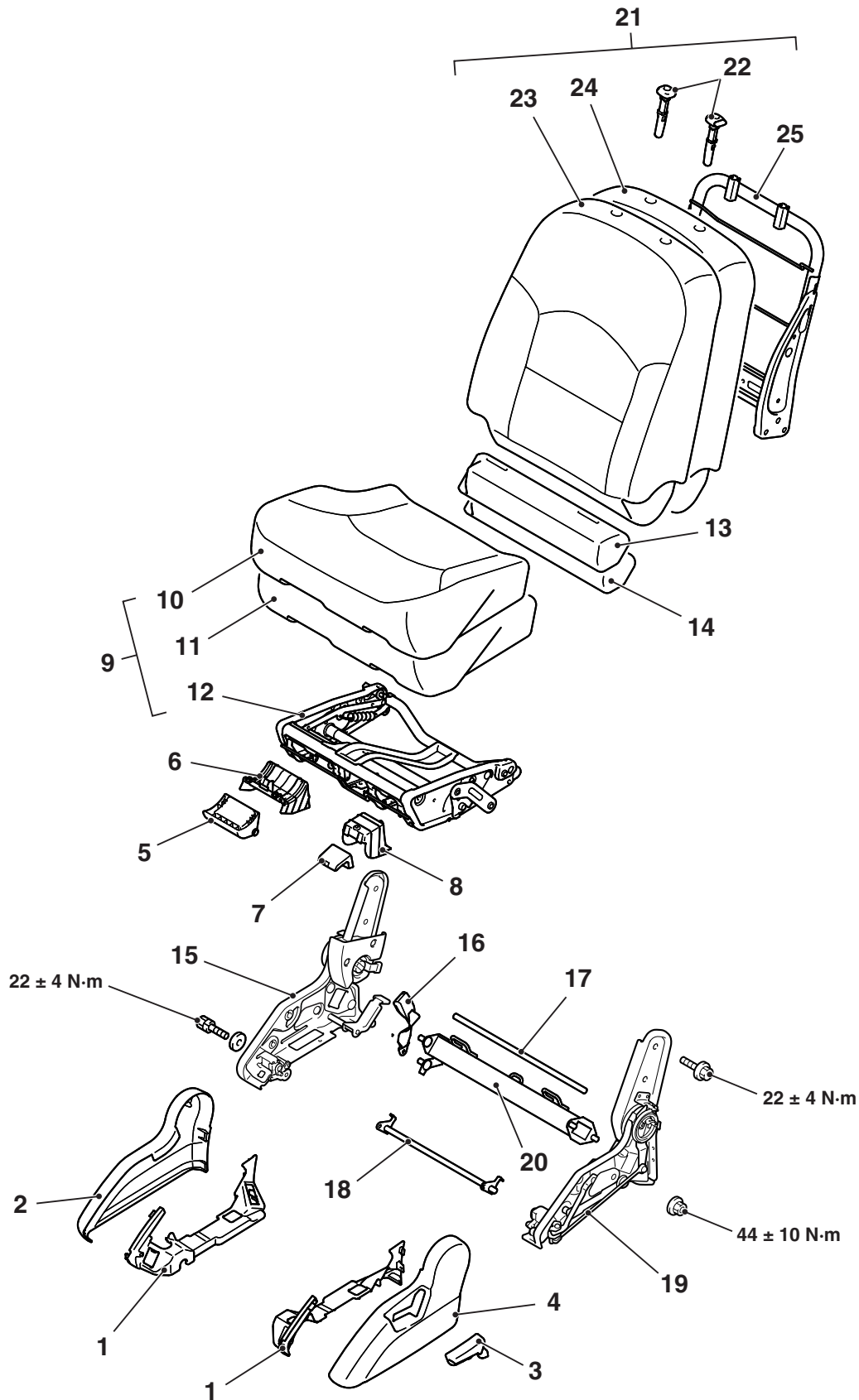
Removal steps (Continued)

7. Seat anchor cover inner
8. Slide adjuster end cover inner
9. Slide adjuster end cover outer
10. Rail cover outer
11. Rail cover inner
12. Slide adjuster outer
13. Slide adjuster inner

DISASSEMBLY AND REASSEMBLY

M1522002500039

<L.H. SIDE >



Disassembly steps

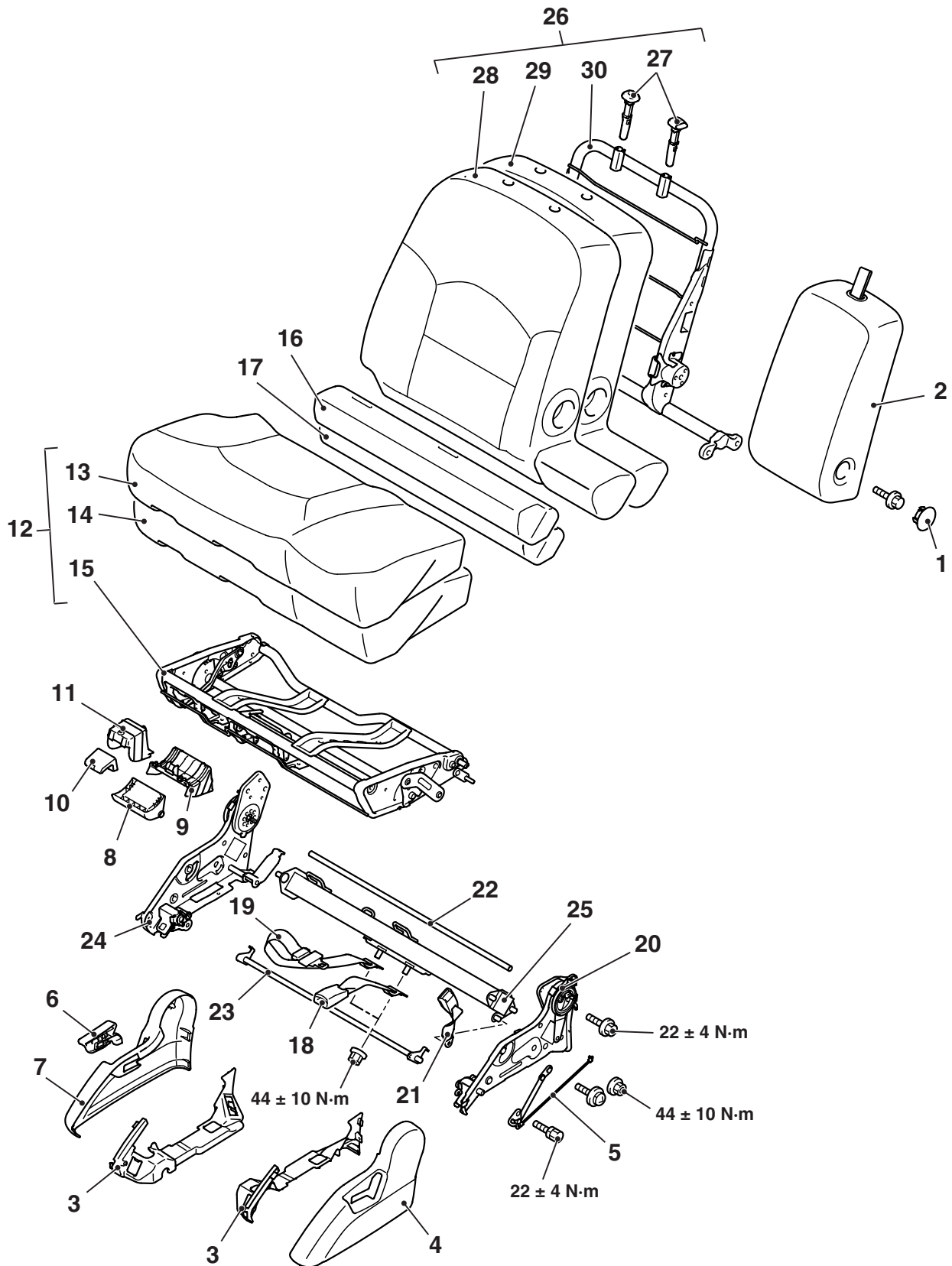
- 1. Shield cover inner
- 2. Shield cover
- 3. Reclining adjuster lever
- 4. Reclining adjuster cover
- 5. Slide lever
- 6. Slide lever garnish
- 7. Tip up lever
- 8. Tip up lever garnish
- 9. Seat cushion assembly
- 10. Seat cushion cover
- 11. Seat cushion pad
- 12. Seat cushion frame
- 13. Sub seat cushion cover

<<A>>

Disassembly steps (Continued)

- 14. Sub seat cushion pad
- 15. Frame base assembly inner
- 16. Inner seat belt
- 17. Shaft
- 18. Shaft
- 19. Frame base assembly outer
- 20. Pipe assembly
- 21. Seatback assembly
- 22. Headrest guide
- 23. Seatback cover
- 24. Seatback pad
- 25. Seatback frame

<R.H. SIDE (EXCEPT FOR AUSTRALIA AND NEW ZEALAND)>



Disassembly steps

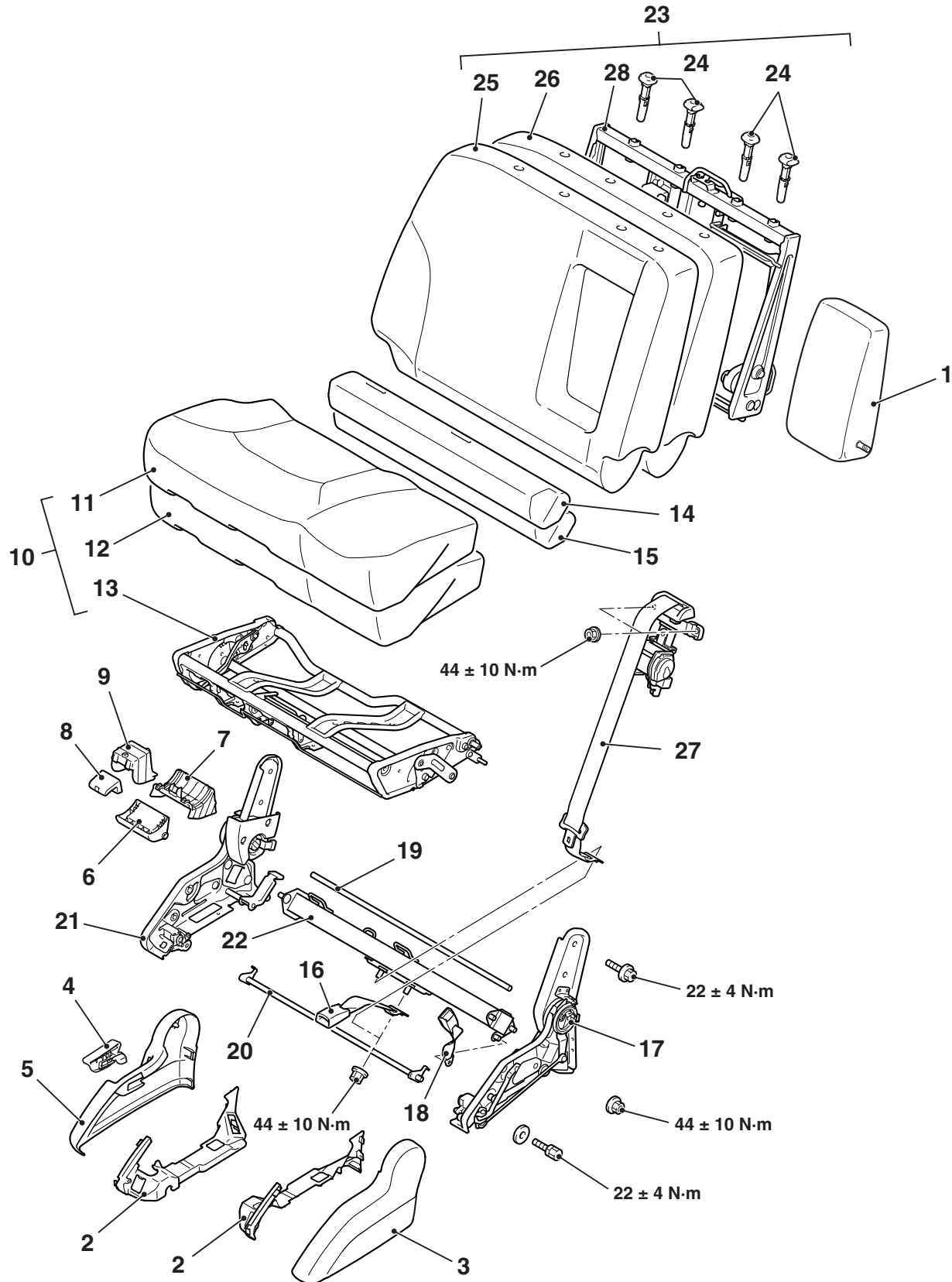
1. Armrest cap
2. Armrest assembly
3. Shield cover inner
4. Shield cover
5. Seat cushion link
6. Reclining adjuster lever
7. Reclining adjuster lever cover
8. Slide lever
9. Slide lever garnish
10. Tip up lever
11. Tip up lever garnish
12. Seat cushion assembly
13. Seat cushion cover
14. Seat cushion pad
15. Seat cushion frame

<<A>>

Disassembly steps (Continued)

16. Sub seat cushion cover
17. Sub seat cushion pad
18. Inner seat belt
19. Centre seat belt outer
20. Frame base assembly
21. Centre seat belt inner
22. Shaft
23. Shaft
24. Frame base assembly outer
25. Pipe assembly
26. Seatback assembly
27. Headrest restraint guide
28. Seatback cover
29. Seatback pad
30. Seatback frame

<R.H. SIDE (VEHICLES FOR AUSTRALIA AND NEW ZEALAND) >



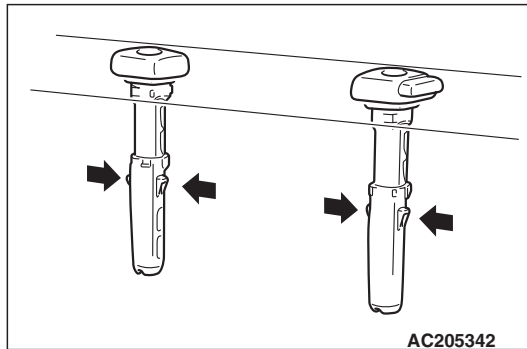
Disassembly steps

1. Armrest assembly
2. Shield cover inner
3. Shield cover
4. Reclining adjuster lever
5. Reclining adjuster cover
6. Slide lever
7. Slide lever garnish
8. Tip up lever
9. Tip up lever garnish
10. Seat cushion assembly
11. Seat cushion cover
12. Seat cushion pad
13. Seat cushion frame
14. Sub seat cushion cover

<<A>>

Disassembly steps (Continued)

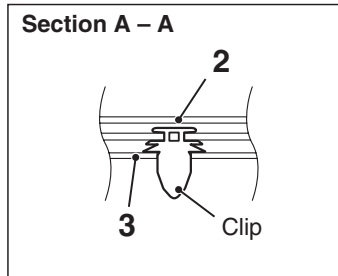
15. Sub seat cushion pad
16. Inner seat belt
17. Frame base assembly inner
18. Centre seat belt inner
19. Shaft
20. Shaft
21. Frame base assembly outer
22. Pipe assembly
23. Seatback assembly
24. Headrest guide
25. Seatback cover
26. Seatback pad
27. Centre seat belt outer
28. Seatback frame

DISASSEMBLY SERVICE POINT**<<A>> HEADRESTRAINT GUIDE REMOVAL**

THIRD SEAT ASSEMBLY

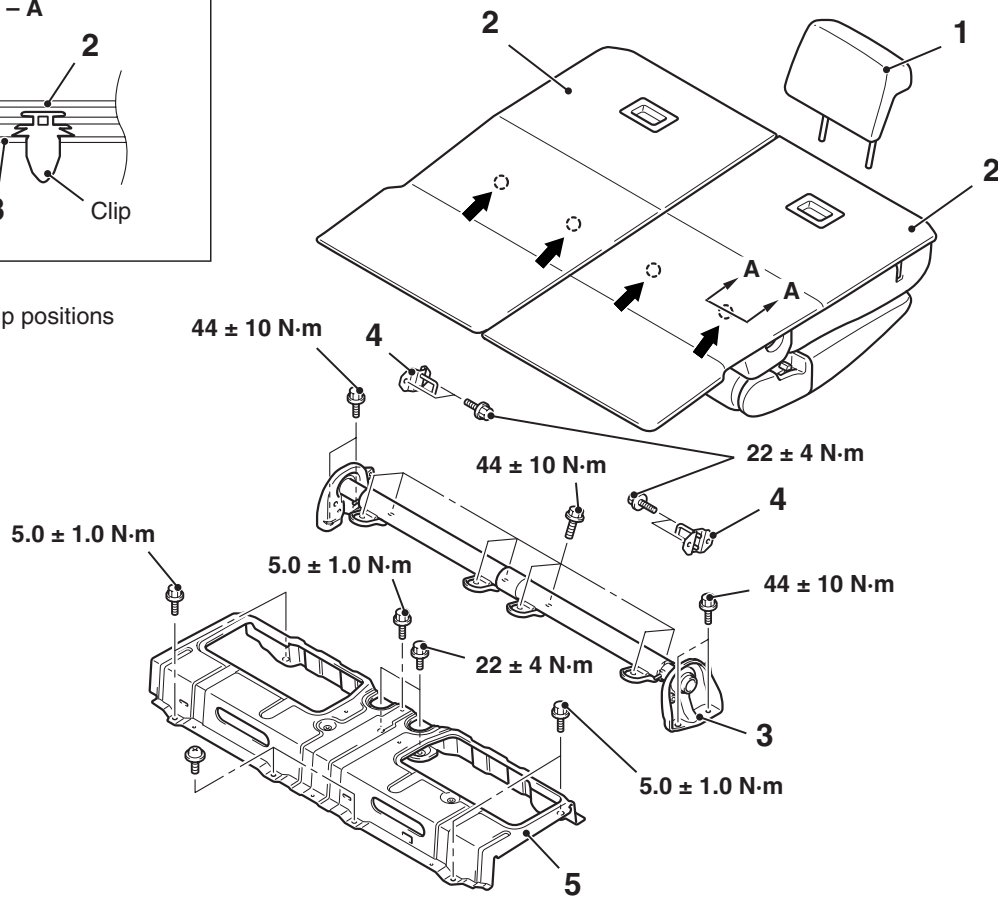
REMOVAL AND INSTALLATION

M1522002800052



NOTE

← : Clip positions



AC312525 AC

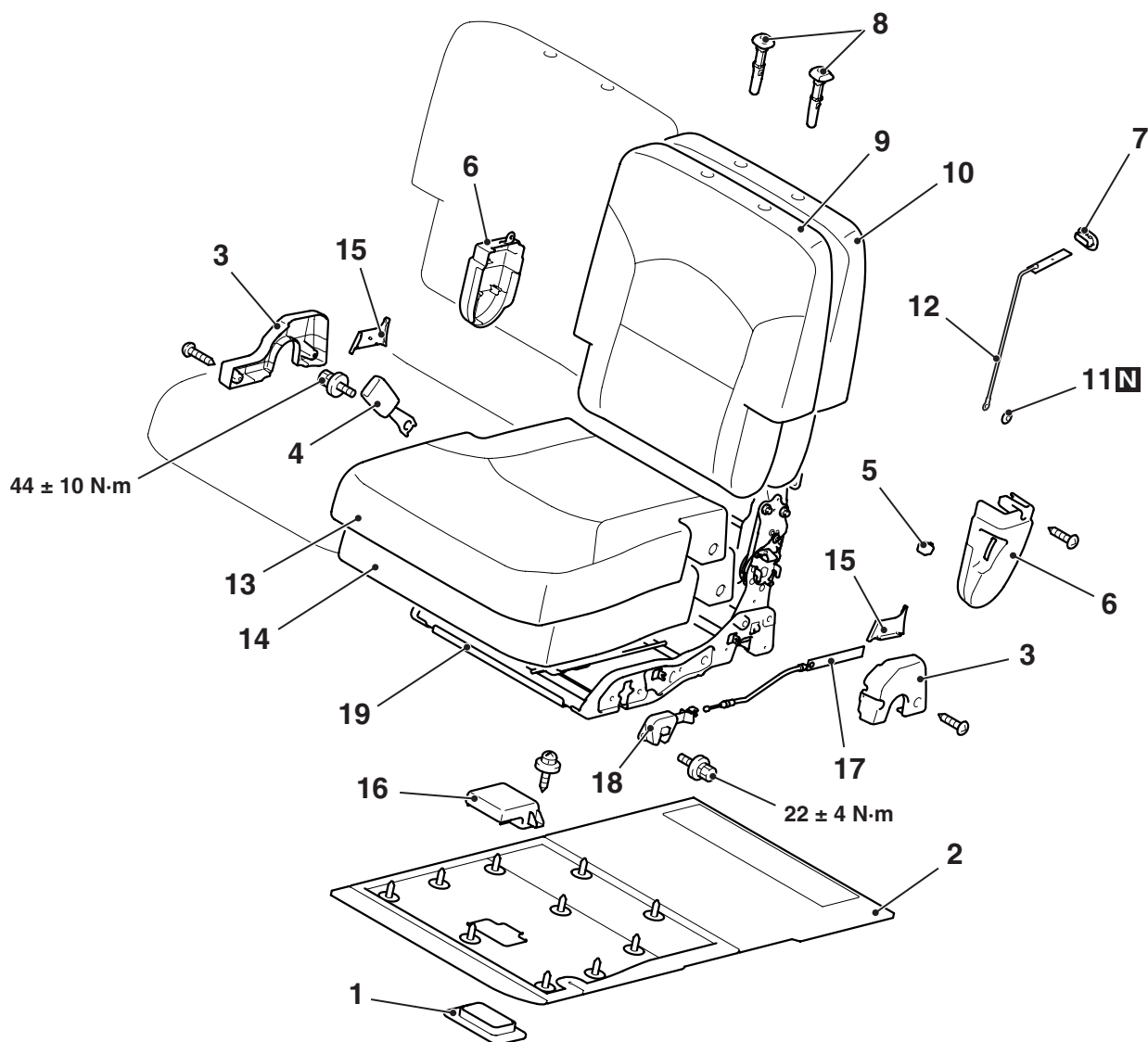
1. Headrest
2. Third seat assembly
3. Shaft assembly

Removal steps (Continued)

4. Striker
5. Seat bracket panel assembly

DISASSEMBLY AND REASSEMBLY

M1522003000071



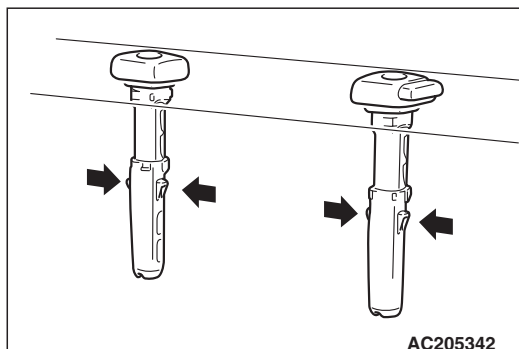
AC311814AB

Disassembly steps

1. Grip garnish
2. Seat cushion panel assembly
3. Outer cover
4. Inner seat belt
5. Reclining adjuster knob
6. Reclining adjuster cover
7. Seatback control cable garnish
8. Headrest guide
9. Seatback cover
10. Seatback pad
11. Clip
12. Rod
13. Seat cushion cover
14. Seat cushion pad
15. Inner cover
16. Grip
17. Seat cushion control cable
18. Seat cushion catch assembly
19. Frame assembly

DISASSEMBLY SERVICE POINT
<<A>> HEADRESTRAINT GUIDE
REMOVAL

<<A>>



AC205342

FRONT SEAT BELT

REMOVAL AND INSTALLATION

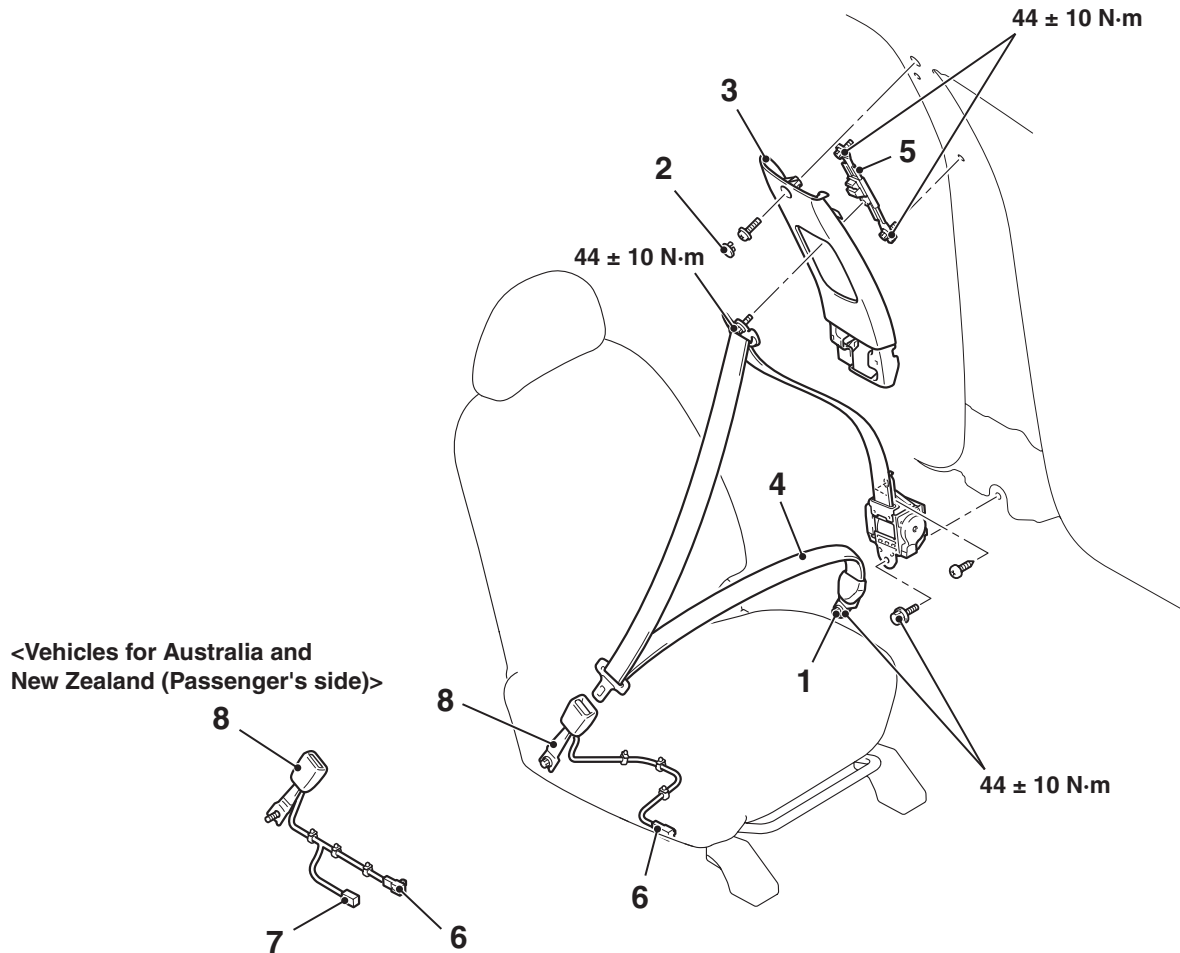
M1523001300433

CAUTION

SRS: Before removing and installing the seat belts with pre-tensioner, refer to GROUP 52B, Service Precautions [P.52B-5](#) and Seat Belt with Pre-tensioner [P.52B-350](#).

Pre-removal and Post-installation Operation

- Turn the ignition key to the LOOK (OFF) position.
- Disconnect the negative battery terminal.



AC311086AE

Outer seat belt removal steps

1. Outer seat belt lower anchor bolt
 - Front scuff plate inner, rear scuff plate, centre pillar trim lower (Refer to [P.52A-10](#).)
2. Centre pillar trim plug
3. Centre pillar trim upper (Refer to [P.52A-10](#).)
4. Outer seat belt (Refer to GROUP 52B, Seat Belt with Pre-tensioner [P.52B-350](#).)
5. Adjustable seat belt anchor

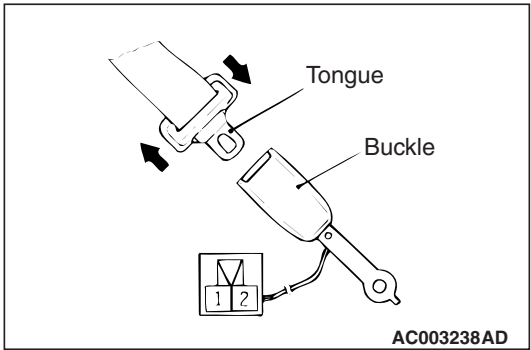
Inner seat belt removal

6. Seat belt switch connector
 - Shield cover (Refer to [P.52A-23](#).)
7. Seat occupancy sensor connector
<Vehicles for Australia and New Zealand (Passenger's side)>
8. Inner seat belt

INSPECTION

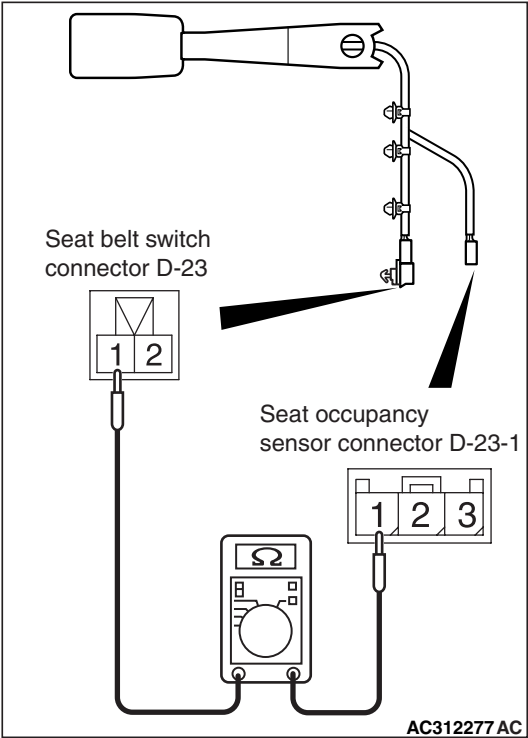
SEAT BELT SWITCH CONTINUITY CHECK
(DRIVER'S SIDE)

M1523004400172



| Item | Tester connection | Specified condition |
|----------------------|-------------------|---------------------|
| Fastened seat belt | 1 -2 | Open circuit |
| Unfastened seat belt | | Less than 2 ohms |

SEAT BELT SWITCH CONTINUITY CHECK
<VEHICLES FOR AUSTRALIA AND NEW ZEALAND (PASSENGER'S SIDE)>



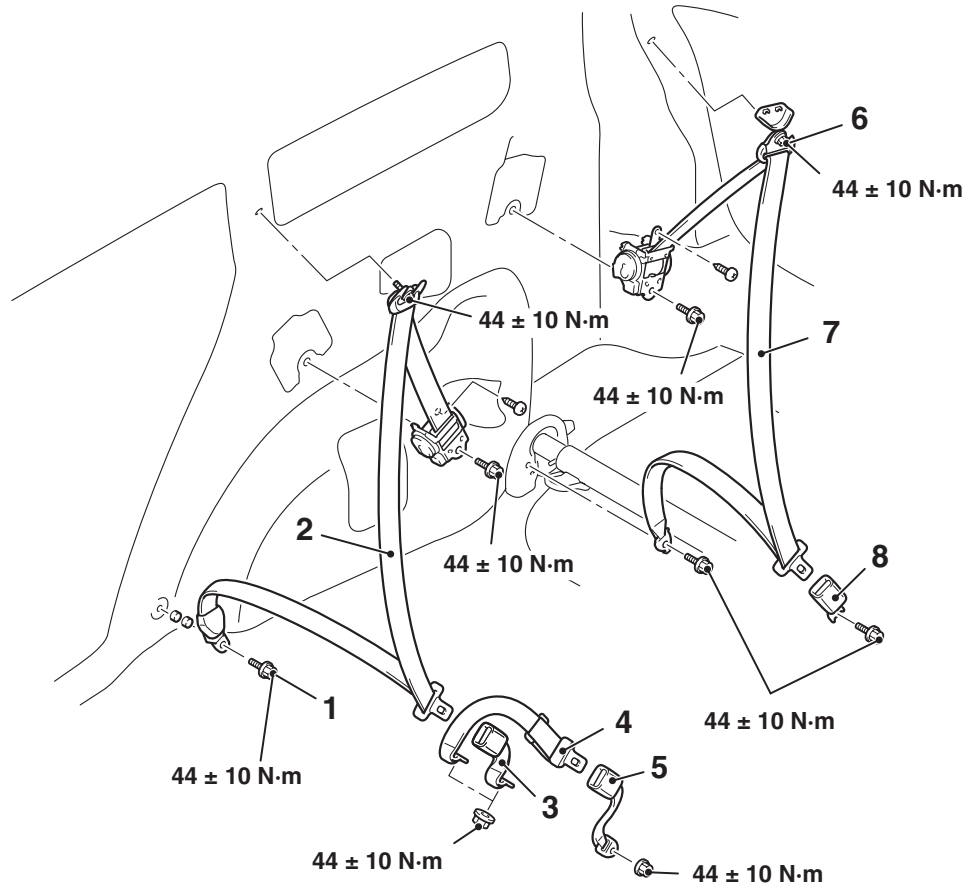
| Item | Tester connection | Specified condition |
|----------------------|---|---------------------|
| Fastened seat belt | Connector D-23 (terminal No.1) -D-23-1 (terminal No.1) | Open circuit |
| Unfastened seat belt | | Less than 2 ohms |

REAR SEAT BELT

REMOVAL AND INSTALLATION

M1523001600423

<EXCEPT FOR AUSTRALIA AND NEW ZEALAND>



AC313240AB

Second seat belt (outer) removal steps

1. Second seat belt lower anchor bolt
- Rear scuff plate (Refer to [P.52A-10.](#))
- Third seat assembly (Refer to [P.52A-35.](#))
- Rear end trim (Refer to [P.52A-10.](#))
- Slide adjuster end cover outer (Refer to [P.52A-27.](#))
- Luggage floor box, rear floor secret box (Refer to [P.52A-10.](#))
- Quarter trim lower (Refer to [P.52A-10.](#))
6. Third seat belt shoulder anchor bolt
- Quarter trim upper (Refer to [P.52A-10.](#))

Second seat belt (outer) removal steps (Continued)

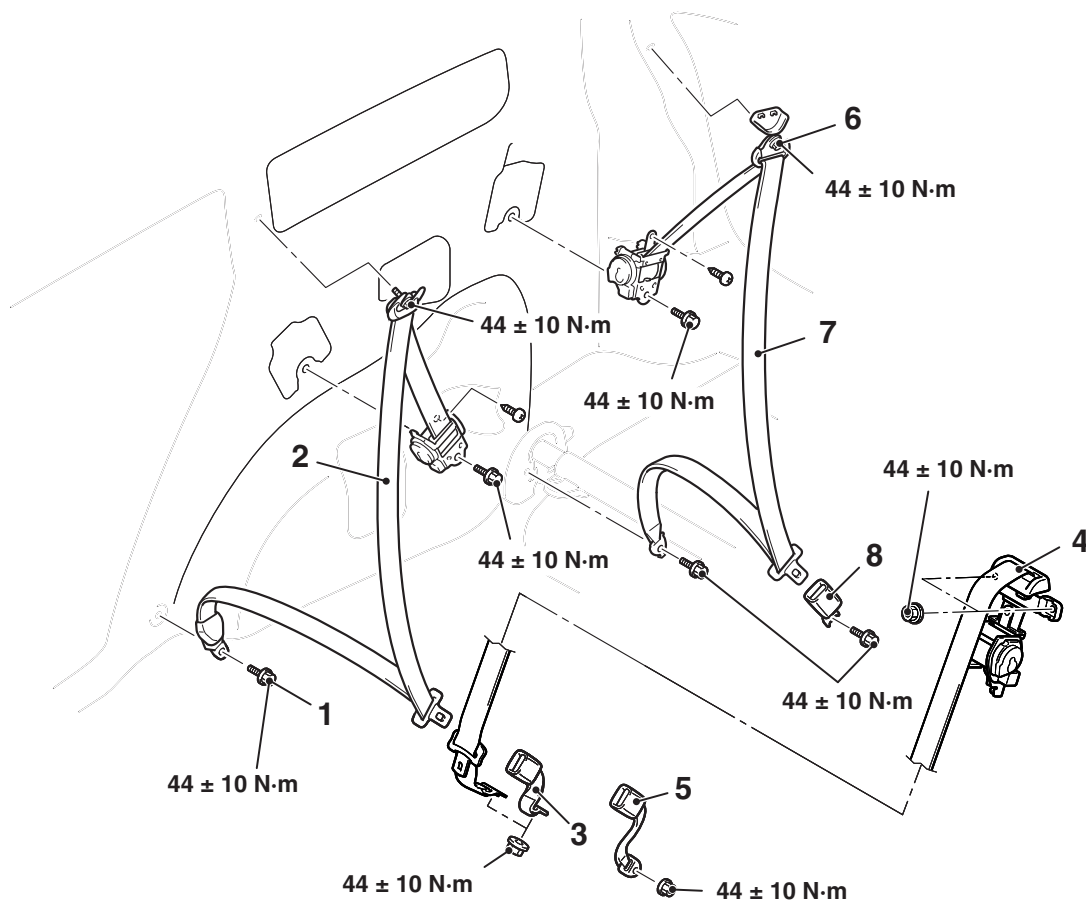
- Rear heater unit (R.H.) (Refer to GROUP 55, Rear Heater Unit [P.55-230.](#))
 - 2. Second seat belt
- ### Second seat belt (inner/centre) removal steps

- Seat cushion assembly (Refer to [P.52A-29.](#))
- 3. Inner seat belt
- 4. Centre seat belt outer
- Frame base assembly (Refer to [P.52A-29.](#))
- 5. Centre seat belt inner

Third seat belt removal steps

6. Third seat belt shoulder anchor bolt
7. Third seat belt
- Outer cover (Refer to [P.52A-36.](#))
8. Inner seat belt

<VEHICLES FOR AUSTRALIA AND NEW ZEALAND>



AC313249AB

Second seat belt (outer) removal steps

1. Second seat belt lower anchor bolt
 - Rear scuff plate (Refer to [P.52A-10.](#))
 - Third seat assembly (Refer to [P.52A-35.](#))
 - Rear end trim (Refer to [P.52A-10.](#))
 - Slide adjuster end cover outer (Refer to [P.52A-27.](#))
 - Rear floor secret box, luggage floor box (Refer to [P.52A-10.](#))
 - Quarter trim lower (Refer to [P.52A-10.](#))
6. Third seat belt shoulder anchor bolt
 - Quarter trim upper (Refer to [P.52A-10.](#))

Second seat belt (outer) removal steps (Continued)

- Rear heater assembly (RH) (Refer to GROUP 55, Rear Heater Unit [P.55-230.](#))

Second seat belt (inner/centre) removal steps

2. Second seat belt
 - Seat cushion assembly (Refer to [P.52A-29.](#))
3. Inner seat belt
 - Seatback pad (Refer to [P.52A-29.](#))
4. Centre seat belt outer
 - Frame base assembly (Refer to [P.52A-29.](#))

Third seat belt removal steps

6. Third seat belt shoulder anchor bolt
7. Third seat belt
 - Outer cover (Refer to [P.52A-36.](#))
8. Inner seat belt