

GROUP 21B

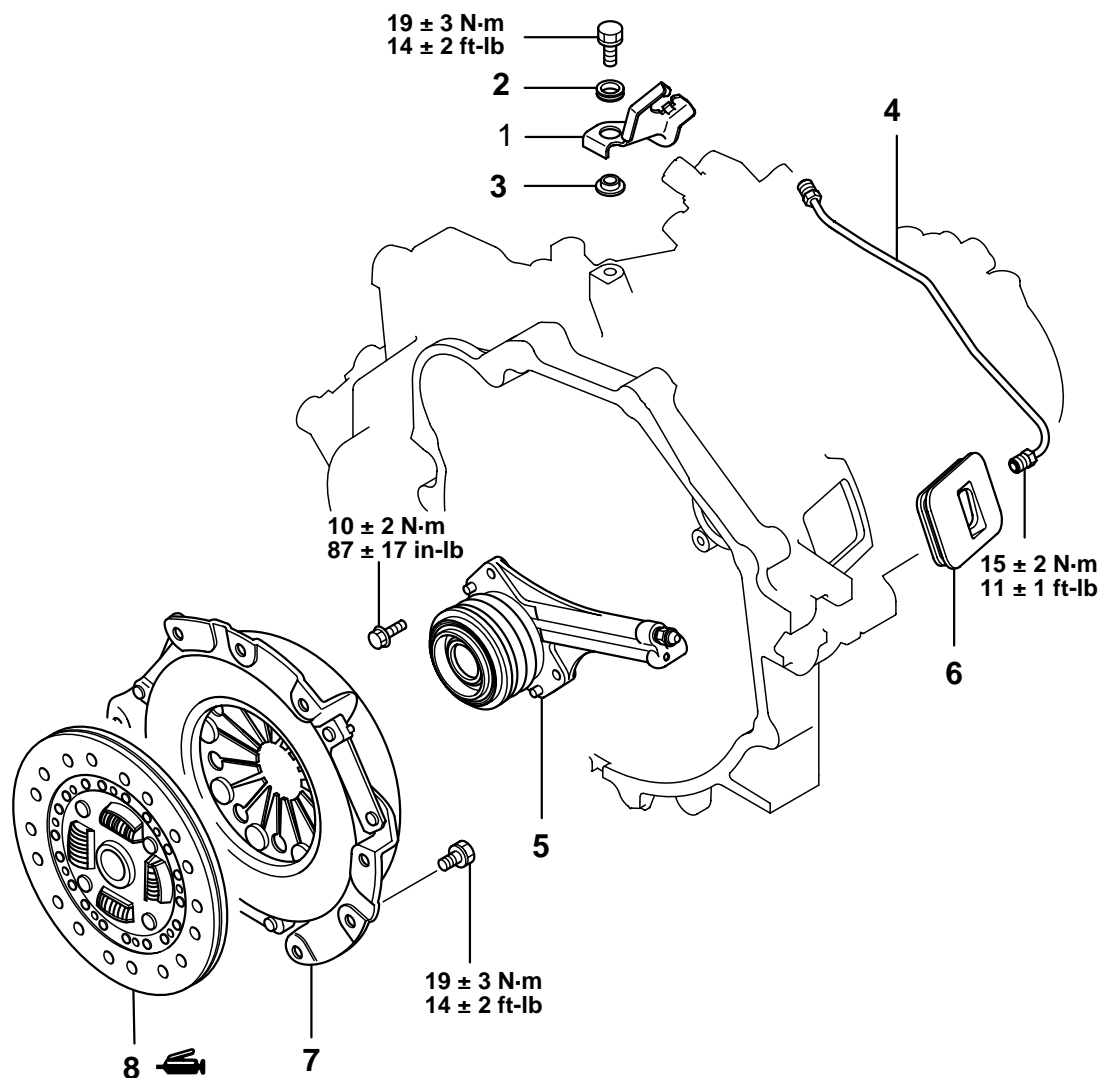
CLUTCH
OVERHAUL

CONTENTS

CLUTCH.....	21B-2	SPECIFICATIONS	21B-4
REMOVAL AND INSTALLATION	21B-2	FASTENER TIGHTENING	
CLUTCH INSPECTION.....	21B-3	SPECIFICATIONS.....	21B-4
		GENERAL SPECIFICATIONS	21B-4
		SERVICE SPECIFICATIONS	21B-4
		LUBRICANTS	21B-4

CLUTCH**REMOVAL AND INSTALLATION**

M1212001000062



AK100595AB

REMOVAL STEPS

1. CLUTCH FLUID LINE BRACKET
2. INSULATOR
3. WASHER
4. CLUTCH TUBE

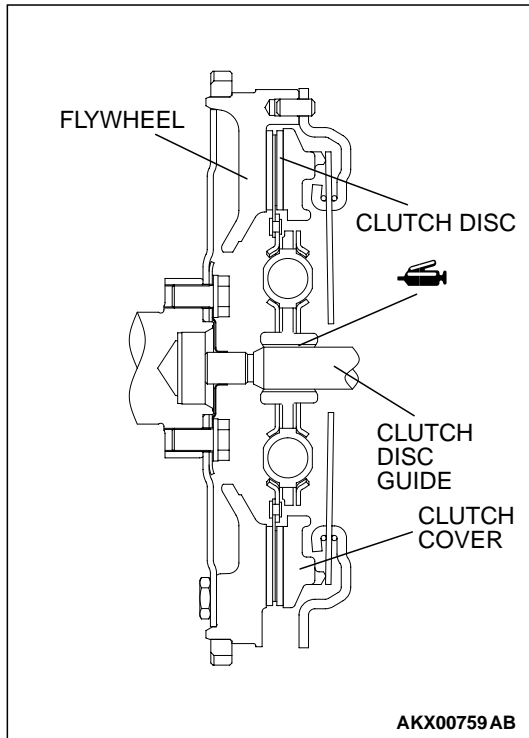
REMOVAL STEPS (Continued)

5. CLUTCH RELEASE CONCENTRIC CYLINDER
6. BOOT
7. CLUTCH COVER
8. CLUTCH DISC

>>A<<
>>A<<

INSTALLATION SERVICE POINTS

>>A<< CLUTCH DISC AND CLUTCH COVER INSTALLATION



1. Apply Mitsubishi genuine grease part number 0101011 or equivalent to the clutch disc splines and rub it in the splines with a brush.
2. Place the clutch disc inside the clutch cover. Be sure to install the disk as shown in the illustration.
3. Use the clutch disc guide to position the clutch disc on the flywheel.
4. Install the clutch cover onto the flywheel.

CLUTCH INSPECTION

M1212001100058

CLUTCH COVER

1. Check the diaphragm spring end for wear and uneven height. Replace if wear is evident or height difference exceeds the limit.
Limit: 0.5 mm (0.020 inch)
2. Check the pressure plate surface for wear, cracks and discoloration.
3. Check the rivets of the strap plate for looseness. If loose, replace the clutch cover.

CLUTCH DISC

⚠ CAUTION

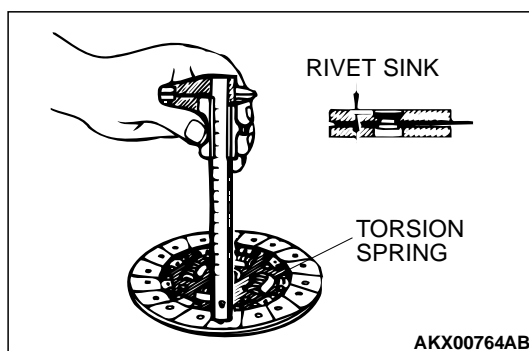
Don't clean the clutch disc in a cleaning solvent.

1. Check the facing for loose rivets, uneven contact, evidence of seizure, or deposited oils and greases. If defective, replace the clutch disc.

NOTE: If contaminated with grease or oil, determine the source of the contaminant and repair it.

2. Measure the rivet sink. Replace the clutch disc if it is below the limit.

Minimum limit: 0.3 mm (0.012 inch)



3. Check the torsion spring for play and damage. If defective, replace the clutch disc.
4. Place the clutch disc on the input shaft and check for sliding condition and play in the rotating direction. If poor sliding condition is evident, clean, reassemble, and recheck. If excessive play is evident, replace the clutch disc and/or input shaft.

CLUTCH RELEASE BEARING**⚠ CAUTION**

Release bearing is packed with grease. Therefore, do not wash it in a cleaning solvent.

Check for seizure, damage, noise or binding/rough rotation.

SPECIFICATIONS**FASTENER TIGHTENING SPECIFICATIONS**

M1212001800068

ITEMS	SPECIFICATIONS
Clutch cover mounting bolt	19 ± 3 N·m (14 ± 2 ft-lb)
Clutch fluid line bracket bolt	19 ± 3 N·m (14 ± 2 ft-lb)
Clutch tube flare nut	15 ± 2 N·m (11 ± 1 ft-lb)
Clutch release concentric cylinder mounting bolt	10 ± 2 N·m (14 ± 2 in-lb)

GENERAL SPECIFICATIONS

M1212000200085

ITEMS	SPECIFICATIONS
Clutch operating method	Hydraulic type
Clutch disc type	Single dry disc type
Clutch disc size OD x ID mm (in)	215 x 140 (8.46 x 5.51)
Clutch cover type	Diaphragm spring type
Clutch cover setting load N (lb)	4,510 (1,014)

SERVICE SPECIFICATIONS

M1212000300060

ITEMS	LIMIT
Clutch disc facing rivet sink mm (in)	Minimum 0.3 (0.012)
Diaphragm spring end height difference mm (in)	0.5 (0.020)

LUBRICANTS

M1212000400078

ITEMS	SPECIFIED LUBRICANTS
Clutch disc splines	MAZDA genuine grease Part Number 0101011 or equivalent