

GROUP 80B

SPLICE LOCATIONS

CONTENTS

HOW TO READ SPLICE LOCATIONS.....	80B-2	ENGINE AND TRANSAXLE <TURBO>	80B-5
INDEX.....	80B-3	DASH PANEL.....	80B-6
ENGINE COMPARTMENT <NON-TURBO>	80B-4	STEERING COLUMN	80B-6
ENGINE COMPARTMENT <TURBO>.....	80B-4	FLOOR AND ROOF	80B-7
ENGINE AND TRANSAXLE <NON-TURBO>	80B-5	DOOR	80B-7
		LUGGAGE COMPARTMENT.....	80B-8

HOW TO READ SPlice LOCATIONS

M1802000100454

"Splice locations" describes splice points of each wiring harness on an actual vehicle. Some variations are included in one splice location. Accordingly, some locations may not be applicable for individual vehicles.

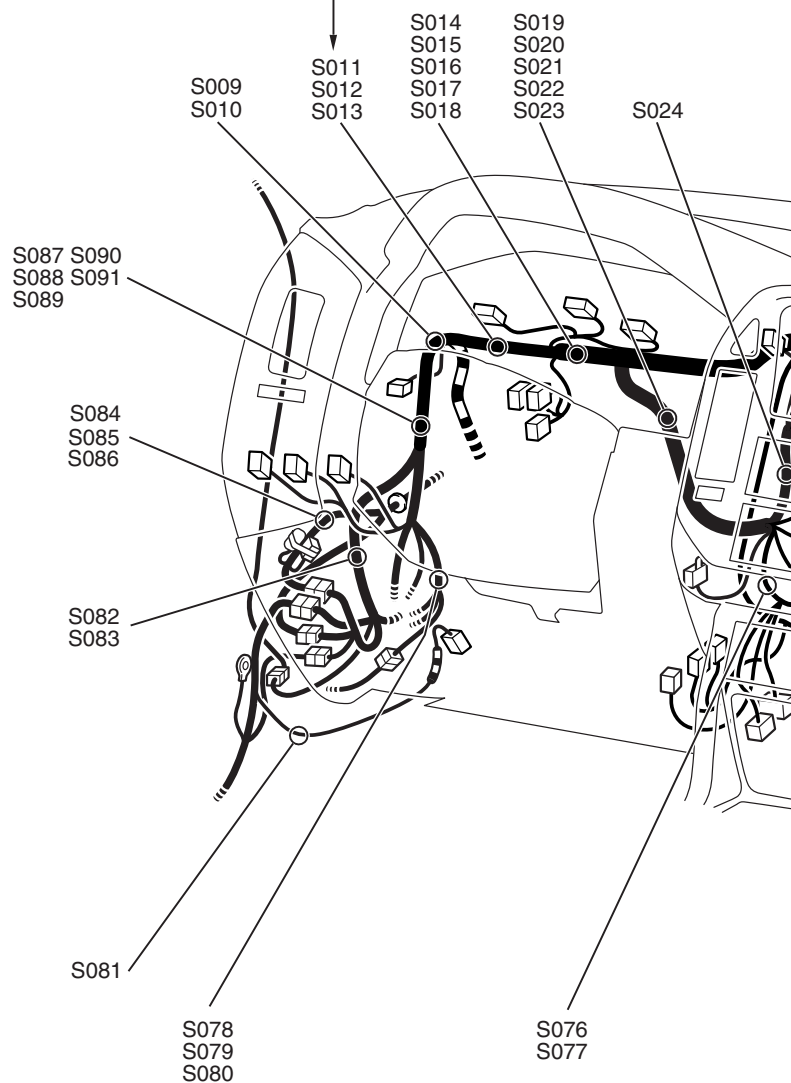
Indicates a splice point number.

The splice point numbers are identical to those in "CIRCUIT DIAGRAMS," making them easy to use. In addition, the splice point numbers are usually numbered clockwise.

Example: S 013

Sequential number

Prefix meaning splice point



ACX02177 AC

INDEX

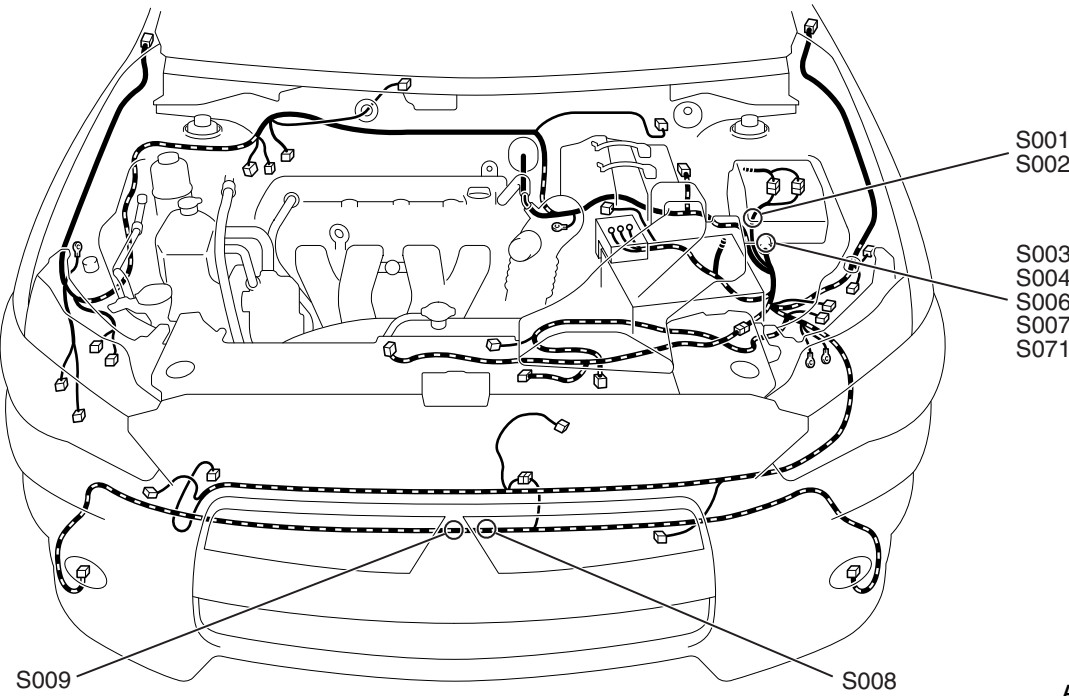
M1802000901516

This index shows the page numbers where the splice locations are.

Splice location NO.	Page	Splice location NO.	Page	Splice location NO.	Page	Splice location NO.	Page
S001	P.80B-4 P.80B-4	S002	P.80B-4 P.80B-4	S003	P.80B-4	S004	P.80B-4
S006	P.80B-4	S007	P.80B-4	S008	P.80B-4 P.80B-4	S009	P.80B-4 P.80B-4
S010	P.80B-5	S011	P.80B-5	S013	P.80B-5	S014	P.80B-5
S015	P.80B-5	S016	P.80B-5	S017	P.80B-5	S018	P.80B-5
S019	P.80B-6	S020	P.80B-6	S021	P.80B-6	S022	P.80B-6
S025	P.80B-6	S027	P.80B-6	S028	P.80B-6	S029	P.80B-6
S030	P.80B-6	S031	P.80B-6	S032	P.80B-6	S033	P.80B-6
S039	P.80B-6	S040	P.80B-6	S041	P.80B-6	S042	P.80B-6
S043	P.80B-6	S044	P.80B-6	S045	P.80B-6	S046	P.80B-6
S047	P.80B-6	S048	P.80B-6	S049	P.80B-7	S050	P.80B-7
S051	P.80B-7	S052	P.80B-7	S053	P.80B-7	S055	P.80B-7
S056	P.80B-7	S057	P.80B-7	S058	P.80B-7	S059	P.80B-7
S060	P.80B-8	S061	P.80B-8	S062	P.80B-8	S063	P.80B-8
S064	P.80B-8	S065	P.80B-8	S066	P.80B-8	S067	P.80B-6
S070	P.80B-4	S071	P.80B-4 P.80B-4	S072	P.80B-6	S073	P.80B-6
S074	P.80B-6	S076	P.80B-6	S078	P.80B-5	S079	P.80B-5
S080	P.80B-5	S081	P.80B-5	S082	P.80B-5	S083	P.80B-5
S084	P.80B-6	S085	P.80B-7	S088	P.80B-6	S089	P.80B-6
S090	P.80B-6	S091	P.80B-6	S092	P.80B-7	S093	P.80B-6
S094	P.80B-6	S095	P.80B-6	S096	P.80B-6	S097	P.80B-6
S098	P.80B-6	S099	P.80B-6	S100	P.80B-6	S101	P.80B-6

ENGINE COMPARTMENT <NON-TURBO>

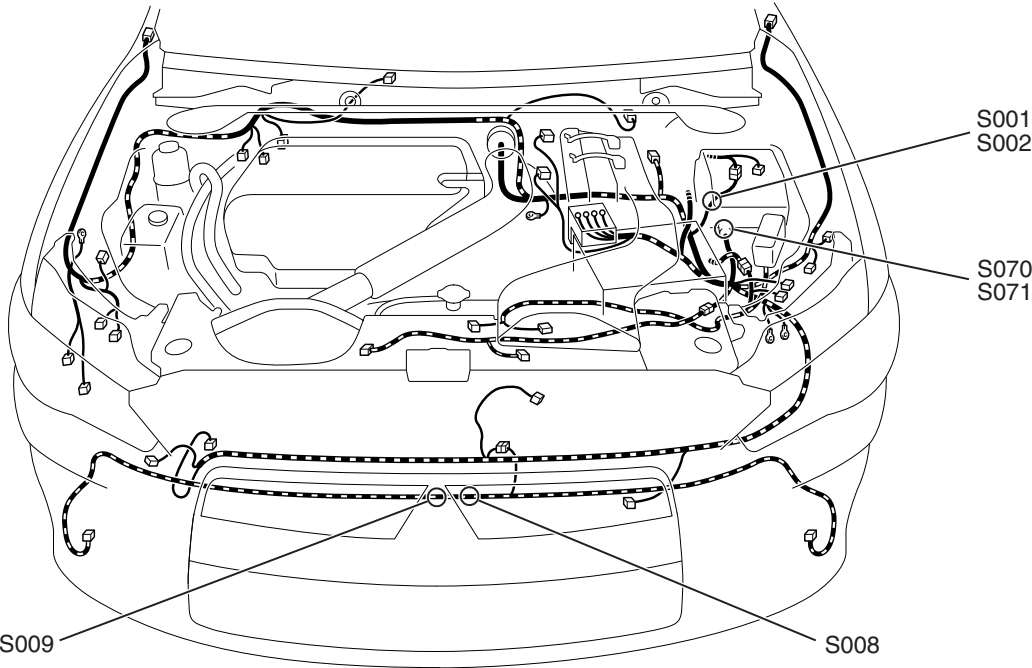
M1802000201108



AC901098AB

ENGINE COMPARTMENT <TURBO>

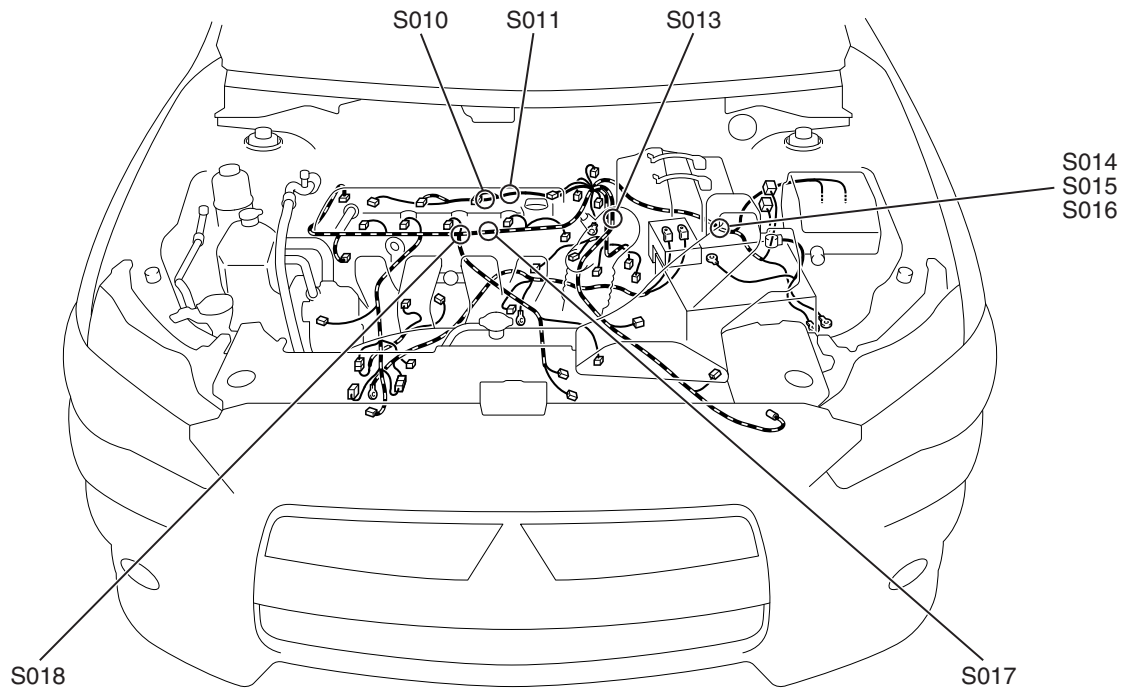
M1802000201119



AC901099AB

ENGINE AND TRANSAXLE <NON-TURBO>

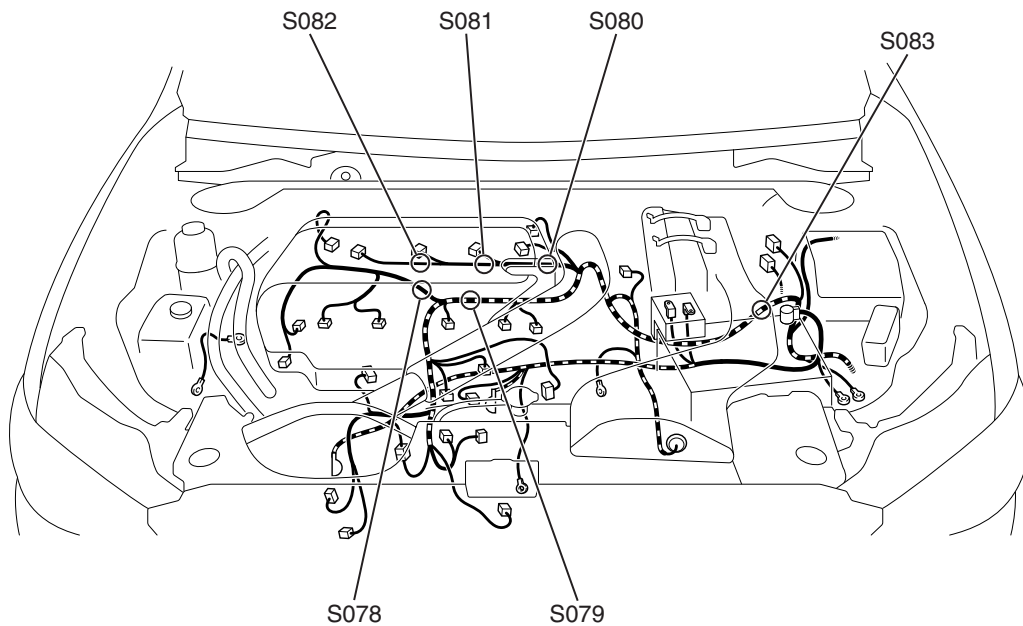
M1802001401116



AC901102AB

ENGINE AND TRANSAXLE <TURBO>

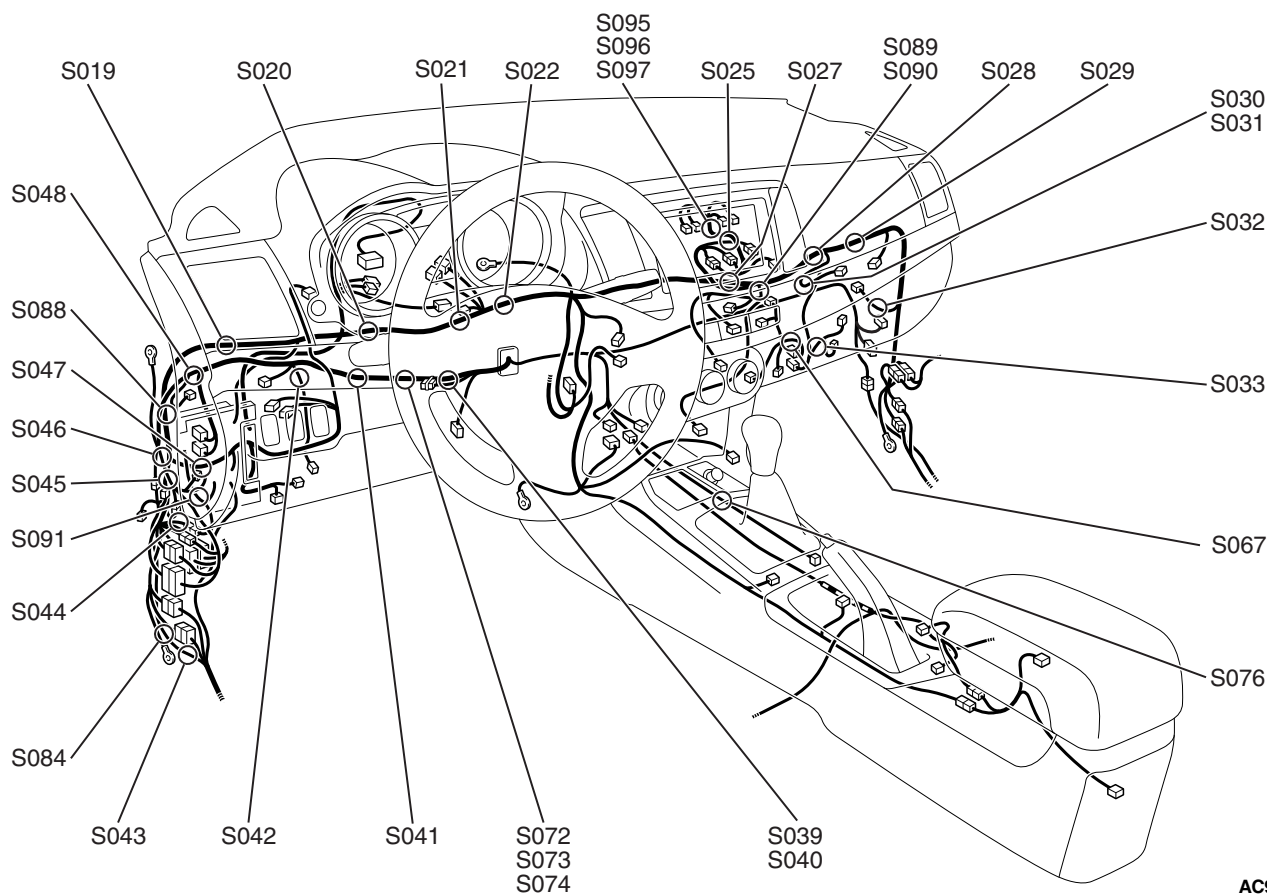
M1802001401020



AC802839AB

DASH PANEL

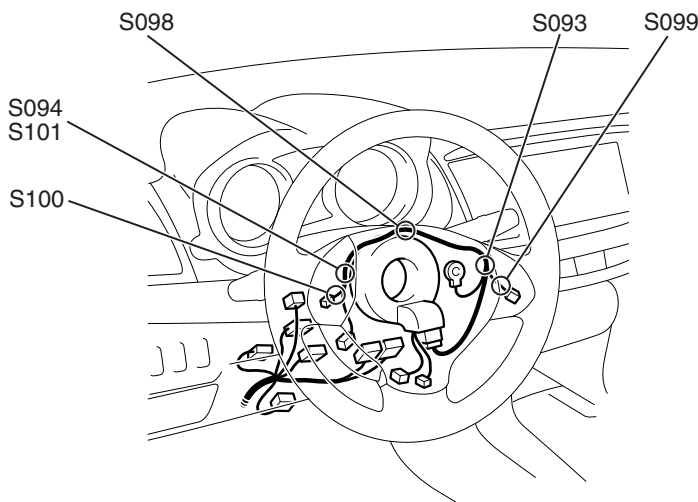
M1802000301321



AC901103AB

STEERING COLUMN

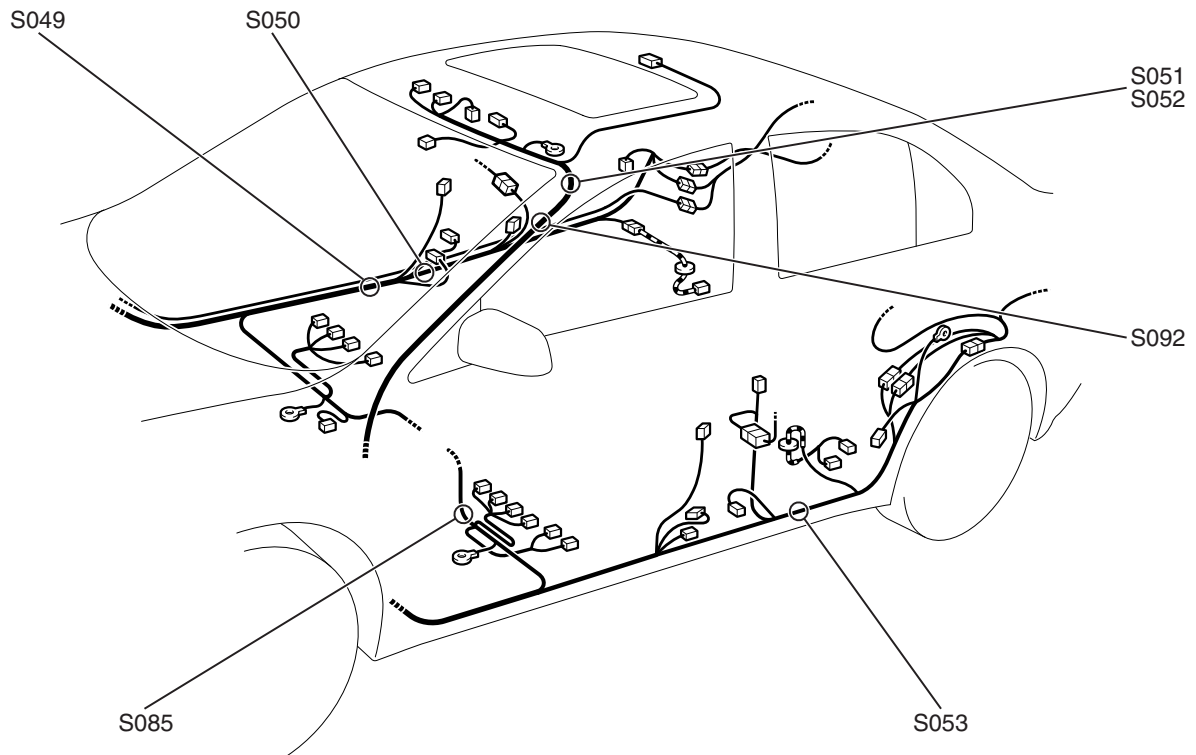
M1801003100030



AC802841AC

FLOOR AND ROOF

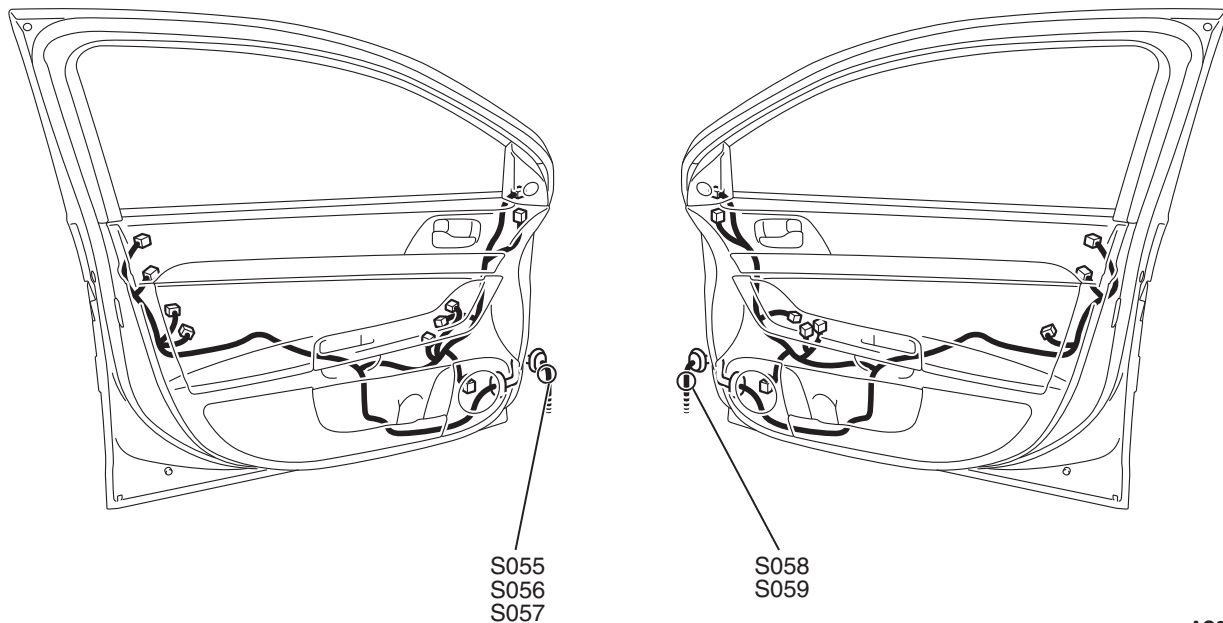
M1802001201071



AC901104AB

DOOR

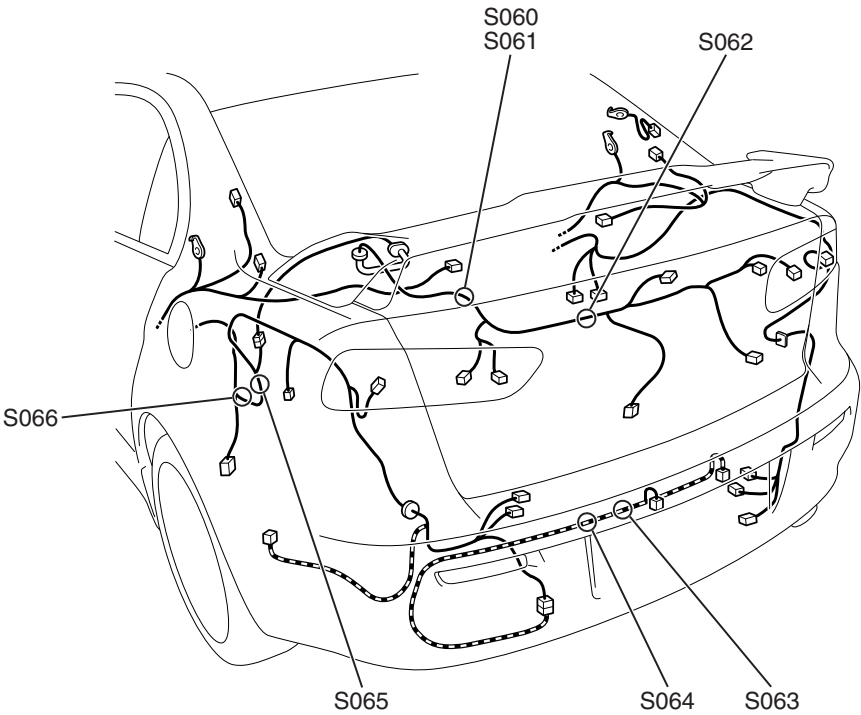
M1802000800710



AC607912AB

LUGGAGE COMPARTMENT

M1802000700348



AC802843AB