

# GROUP 52A

# INTERIOR

## CONTENTS

<b>GENERAL INFORMATION</b> .....	<b>52A-2</b>	<b>DOOR TRIM</b> .....	<b>52A-16</b>
<b>SERVICE SPECIFICATIONS</b> .....	<b>52A-2</b>	REMOVAL AND INSTALLATION .....	52A-16
<b>SPECIAL TOOL</b> .....	<b>52A-2</b>	<b>HEADLINING</b> .....	<b>52A-18</b>
<b>INSTRUMENT PANEL ASSEMBLY*</b> .....	<b>52A-3</b>	REMOVAL AND INSTALLATION .....	52A-18
REMOVAL AND INSTALLATION .....	52A-3	<b>INSIDE REAR VIEW MIRROR</b> .....	<b>52A-20</b>
<b>GLOVE BOX</b> .....	<b>52A-6</b>	<b>FRONT SEAT ASSEMBLY</b> .....	<b>52A-21</b>
REMOVAL AND INSTALLATION .....	52A-6	REMOVAL AND INSTALLATION .....	52A-21
<b>INSTRUMENT CENTER PANEL</b> .....	<b>52A-7</b>	INSPECTION .....	52A-23
REMOVAL AND INSTALLATION .....	52A-7	DISASSEMBLY AND ASSEMBLY .....	52A-25
<b>INSTRUMENT LOWER PANEL</b> .....	<b>52A-8</b>	<b>REAR SEAT ASSEMBLY</b> .....	<b>52A-28</b>
REMOVAL AND INSTALLATION .....	52A-8	REMOVAL AND INSTALLATION .....	52A-28
<b>FLOOR CONSOLE ASSEMBLY</b> .....	<b>52A-9</b>	DISASSEMBLY AND ASSEMBLY .....	52A-31
REMOVAL AND INSTALLATION .....	52A-9	<b>FRONT SEAT BELT</b> .....	<b>52A-34</b>
<b>TRIMS</b> .....	<b>52A-12</b>	REMOVAL AND INSTALLATION .....	52A-34
REMOVAL AND INSTALLATION .....	52A-12	INSPECTION .....	52A-35
		<b>REAR SEAT BELT</b> .....	<b>52A-36</b>
		REMOVAL AND INSTALLATION .....	52A-36

### WARNINGS REGARDING SERVICING OF SUPPLEMENTAL RESTRAINT SYSTEM (SRS) EQUIPPED VEHICLES

#### **WARNING**

- *Improper service or maintenance of any component of the SRS, or any SRS-related component, can lead to personal injury or death to service personnel (from inadvertent firing of the air bag) or to the driver and passenger (from rendering the SRS inoperative).*
- *Service or maintenance of any SRS component or SRS-related component must be performed only at an authorized MITSUBISHI dealer.*
- *MITSUBISHI dealer personnel must thoroughly review this manual, and especially its GROUP 52B - Supplemental Restraint System (SRS) before beginning any service or maintenance of any component of the SRS or any SRS-related component.*

#### NOTE

The SRS includes the following components: SRS air bag control unit, SRS warning light, front impact sensors, driver's and passenger's (front) air bag modules, knee air bag module, side-airbag module, curtain air bag module, side impact sensors, seat belt pre-tensioners, clock spring, and interconnecting wiring. Other SRS-related components (that may have to be removed/installed in connection with SRS service or maintenance) are indicated in the table of contents by an asterisk (\*).

## GENERAL INFORMATION

M1521000100678

## OPERATION

## SEAT BELT WARNING SYSTEM

If the driver turns the ignition switch to the "ON" position without fastening the seat belt, the seat belt warning light illuminates.

## SERVICE SPECIFICATIONS

M1521000300315

## SEAT CUSHION HEATER

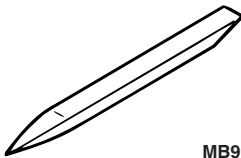
Item	Measured terminal	Standard value
Seat cushion heater (At room temperature 20°C)	Heated seat assembly terminals 1 – seat back heater terminal 1	4.04 - 4.94 $\Omega$ <Standard seat>
		4.83 - 5.85 $\Omega$ <Sport seat>
		3.84 - 4.69 $\Omega$ <RECARO seat>
	Heated seat assembly terminals 2 – seat back heater terminal 1	0.23 - 0.28 $\Omega$ <Standard seat>
		0.15 - 0.19 $\Omega$ <Sport seat>
		0.14 - 0.18 $\Omega$ <RECARO seat>

## SEATBACK HEATER

Item	Measured terminal	Standard value
Seatback heater (At room temperature 20°C)	1 – 2	4.86 - 5.94 $\Omega$ <Standard seat>
		4.06 - 4.96 $\Omega$ <Sport seat>
		5.40 - 6.60 $\Omega$ <RECARO seat>

## SPECIAL TOOL

M1521000600576

Tool	Tool number and name	Supersession	Application
 MB990784	MB990784 Ornament remover	General service tool	Removal of switch, trim, etc.

## INSTRUMENT PANEL ASSEMBLY


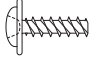
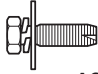
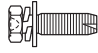
### REMOVAL AND INSTALLATION

M1521001702011

**⚠ WARNING**

**For removal and installation of the passenger's side air bag module, always observe the service procedures described in GROUP 52B, Air Bag Module and Clock Spring P.52B-419 <Except for RALLIART> P.52B-427 <RALLIART>.**

The following bolts and screws are used for installing the instrument panel. Bolts and screws are indicated as marks shown in the illustration in the sections of "Removal and Installation" and "Disassembly and Assembly."

Name	Symbol	Size (D × L) mm	Color	Shape
Tapping screw	a	5 × 12	—	 AC104450
	b	5 × 16	—	
	c	5 × 12	—	 AC104436
Bolt with washer	d	5 × 20	—	 AC104417
	e	6 × 16	—	 AC104429

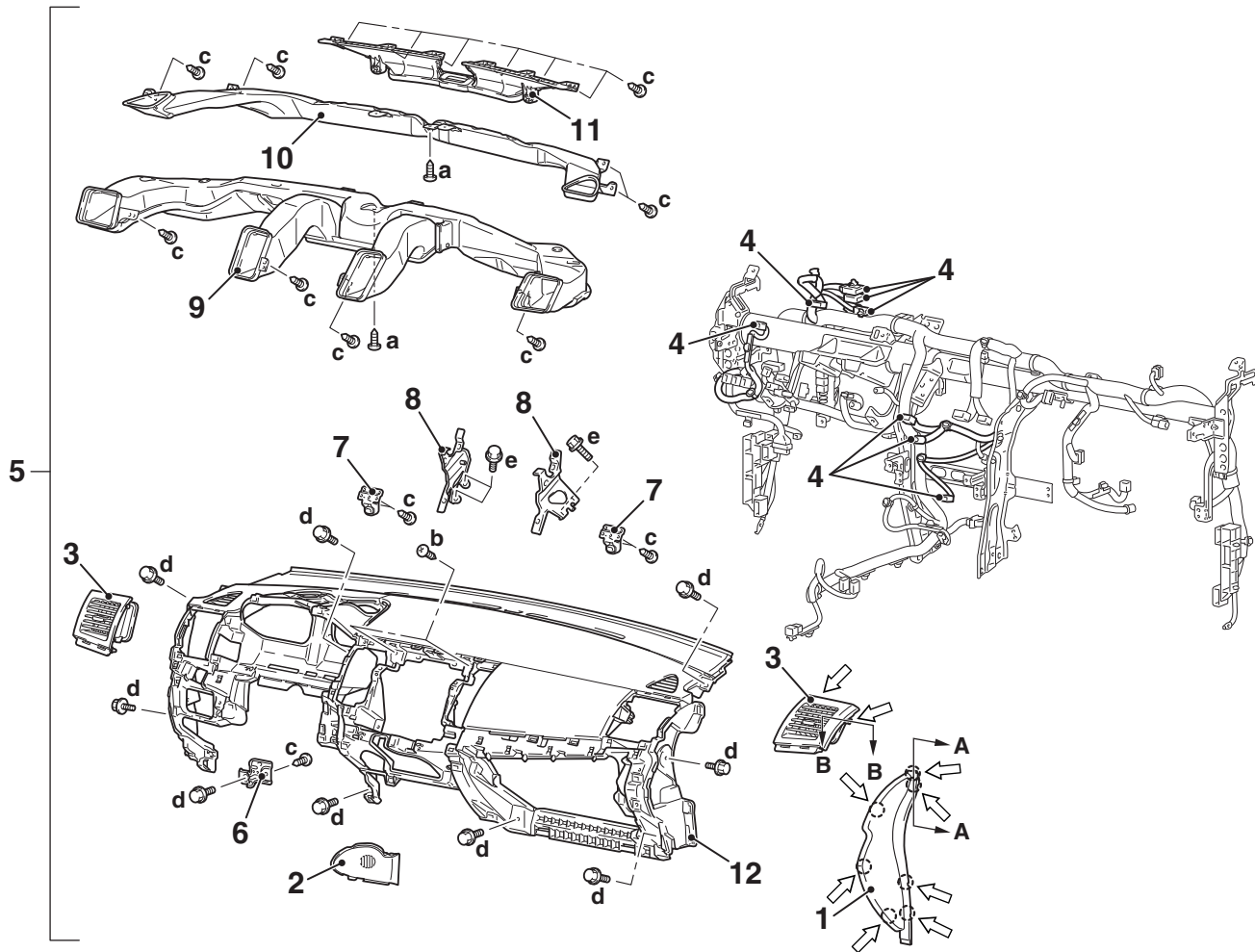
D: Thread diameter, L: Effective thread length

**⚠ CAUTION**

- Refer to GROUP 52B-SRS Service Precautions [P.52B-26](#) and Air bag Module and Clock Spring [P.52B-435](#) before removing the passenger side air bag module.
- Do not subject the SRS-ECU to any shocks when removing or installing the instrument panel.

**Pre-removal and Post-installation Operation**

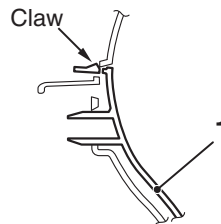
- Removal and Installation of Front Pillar Trim (Refer to [P.52A-12](#)).
- Removal and Installation of Instrument Under Cover (Refer to [P.52A-12](#)).
- Removal and Installation of Glove Box (Refer to [P.52A-12](#)).
- Removal and Installation of Instrument Cover Lower, Air Outlet Garnish (Refer to [P.52A-12](#)).
- Removal and Installation of Audio Unit (Refer to GROUP 54A, Radio with CD Player [P.54A-428](#)).
- Removal and Installation of Audio Visual Navigation Unit, GPS antenna (Refer to GROUP 54A, MMCS [P.54A-536](#)).
- Removal and Installation of Steering shaft (Refer to GROUP 37, Steering Column Shaft [P.37-37](#)).
- Removal and Installation of Hands-free Cellular Phone System (Refer to GROUP 54A, Hands-free Module [P.54A-623](#)).
- Removal and Installation of Sensors (Refer to GROUP 55B, Interior Temperature Sensor [P.55B-21](#)).



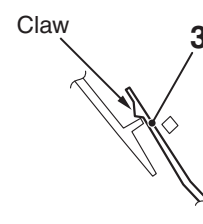
Note

⇐ : Claw positions

Section A – A



Section B – B



AC610166AC

### Removal steps

1. Instrument panel side cover
- Combination meter (Refer to GROUP 54A, Combination Meter [P.54A-126](#)).
2. Instrument panel console side cover
3. Instrument panel side air outlet
4. Instrument panel harness clamp
5. Instrument panel assembly
- Photo sensor (Refer to GROUP 55B, Sensors [P.55B-21](#)).

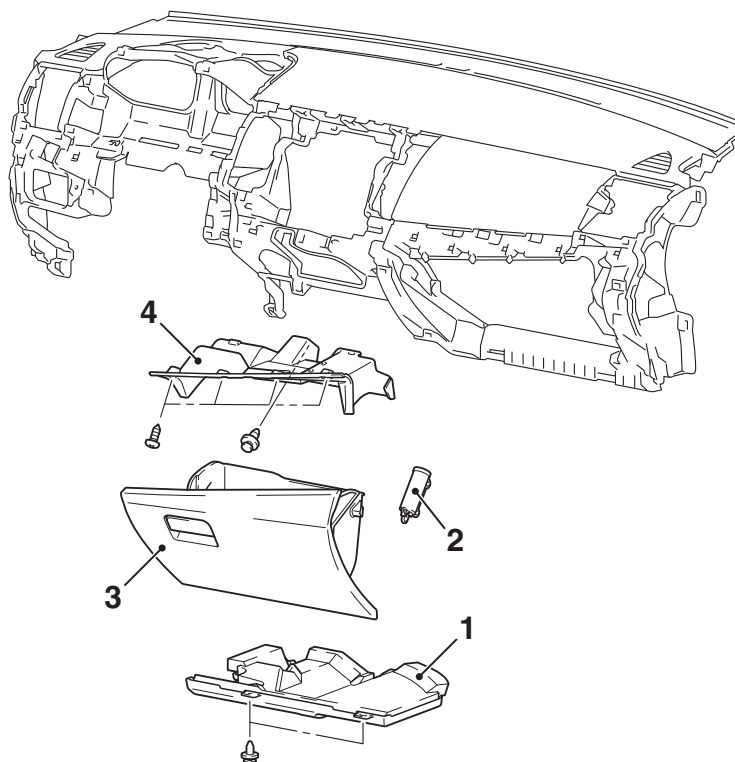
### Removal steps (Continued)

- Passenger's (front) air bag module (Refer to GROUP 52B, Air Bag Module(s) and Clock Spring [P.52B-435](#)).
- 6. Instrument panel side bracket lower
- 7. Instrument panel holder
- 8. Instrument panel reinforcement center
- 9. Ventilator air distribution duct
- 10. Side defroster duct
- 11. Defroster nozzle
- 12. Instrument panel

# GLOVE BOX

## REMOVAL AND INSTALLATION

M1521011500142



AC802761AB

**Removal steps**

1. Bottom cover (passenger side)
2. Glove box damper <Except for DE>

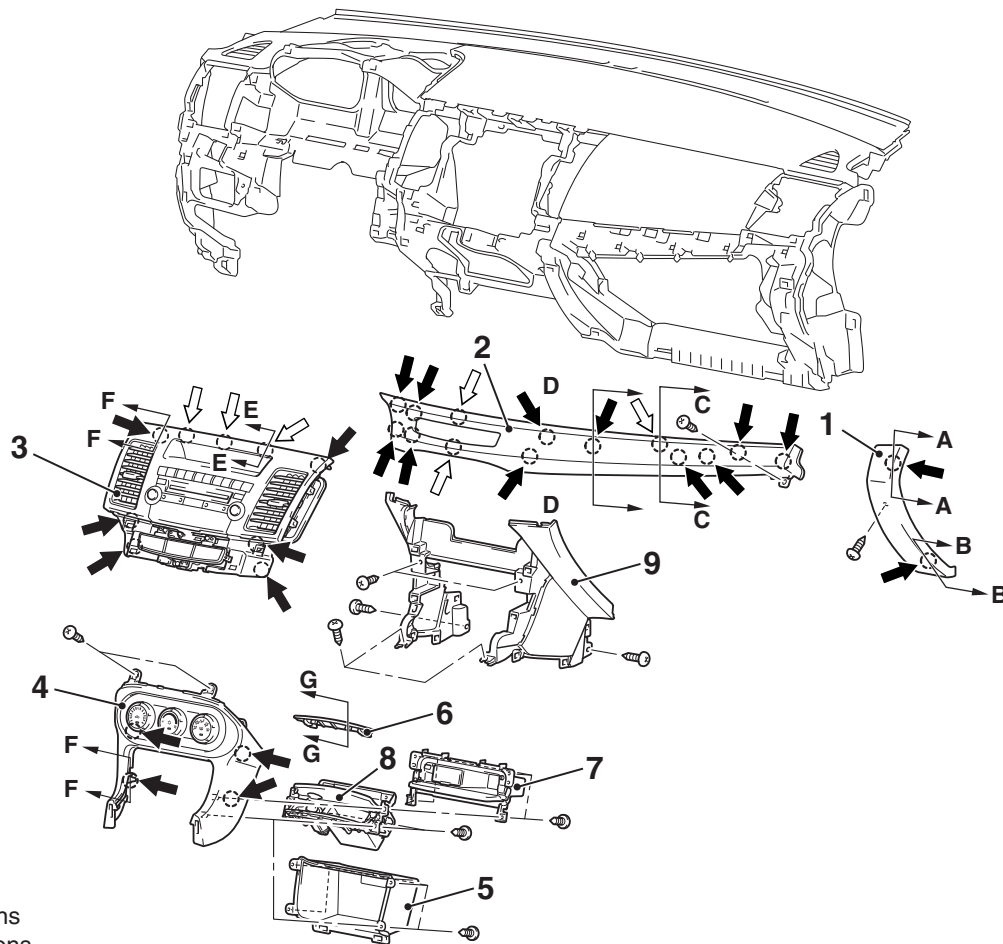
**Removal steps (Continued)**

3. Glove box
4. Glove box cover



# INSTRUMENT CENTER PANEL

## REMOVAL AND INSTALLATION

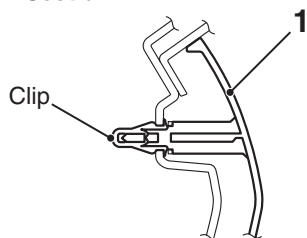
M1521011300416



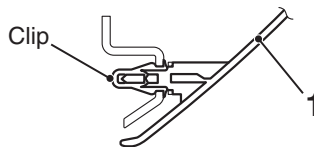
Note

 : Clip positions  
 : Claw positions

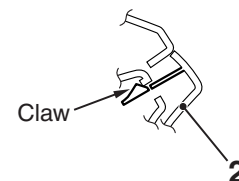
Section A – A



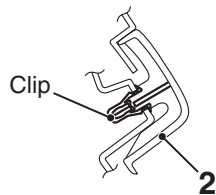
Section B – B



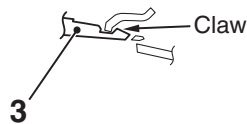
Section C – C



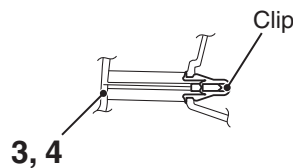
Section D – D



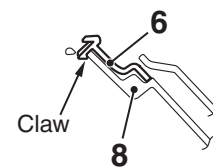
Section E – E



Section F – F



Section G – G



AC901414AB

### Removal steps

1. Glove box side panel
2. Instrument panel air outlet garnish lower (RH)
3. Instrument center panel

### Removal steps (Continued)

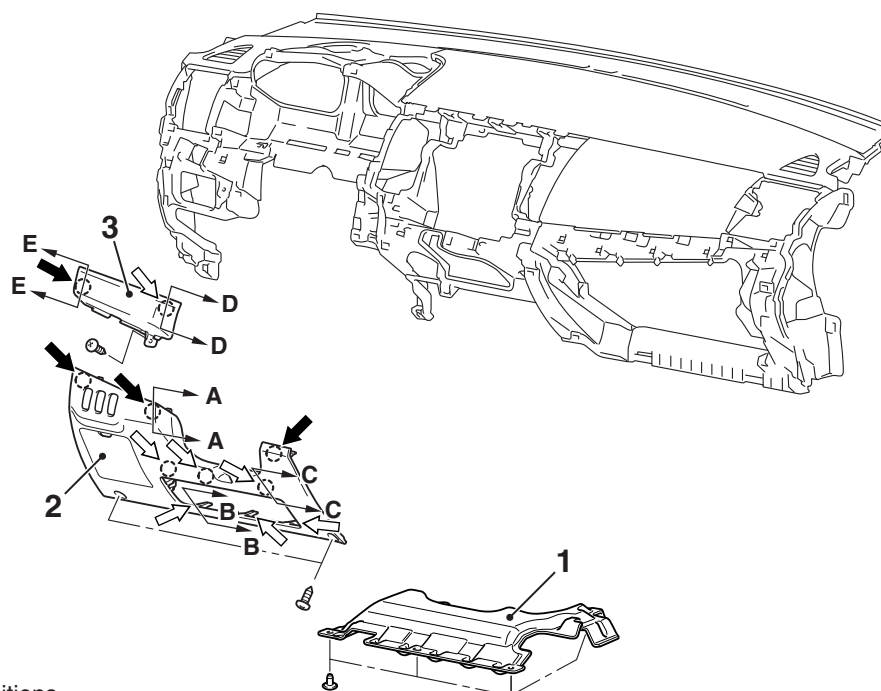
- Floor console assembly (Refer to [P.52A-9](#)).
- 4. Instrument panel center lower

**Removal steps (Continued)**

5. Instrument panel console box  
<Vehicles without extra box>
6. Instrument panel console plug  
<Vehicles with extra box>
7. Tray <Vehicles with extra box>
8. Extra box <Vehicles with extra box>
- Floor console side cover (Refer to [P.52A-9](#)).
9. Instrument under cover

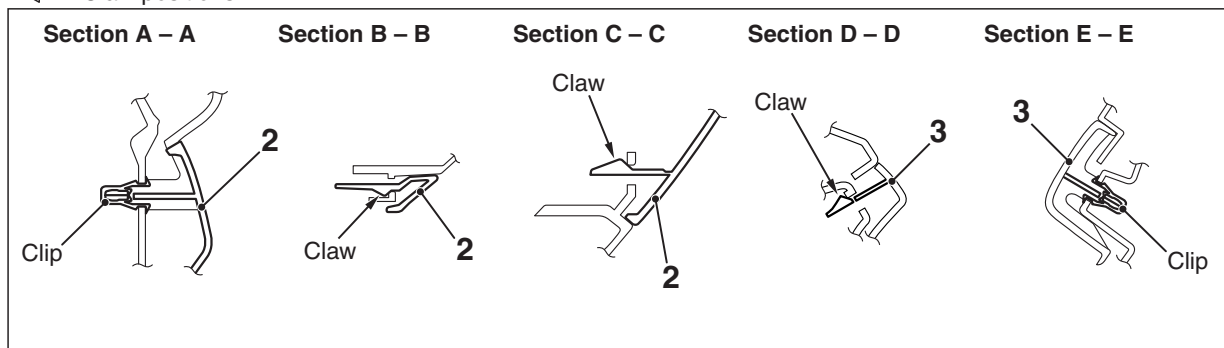
**INSTRUMENT LOWER PANEL****REMOVAL AND INSTALLATION**

M1521011700209



Note

- : Clip positions  
 : Claw positions



AC802954AB

**Removal steps**

1. Instrument panel cover lower  
<Vehicles with instrument panel cover lower>

**Removal steps (Continued)**

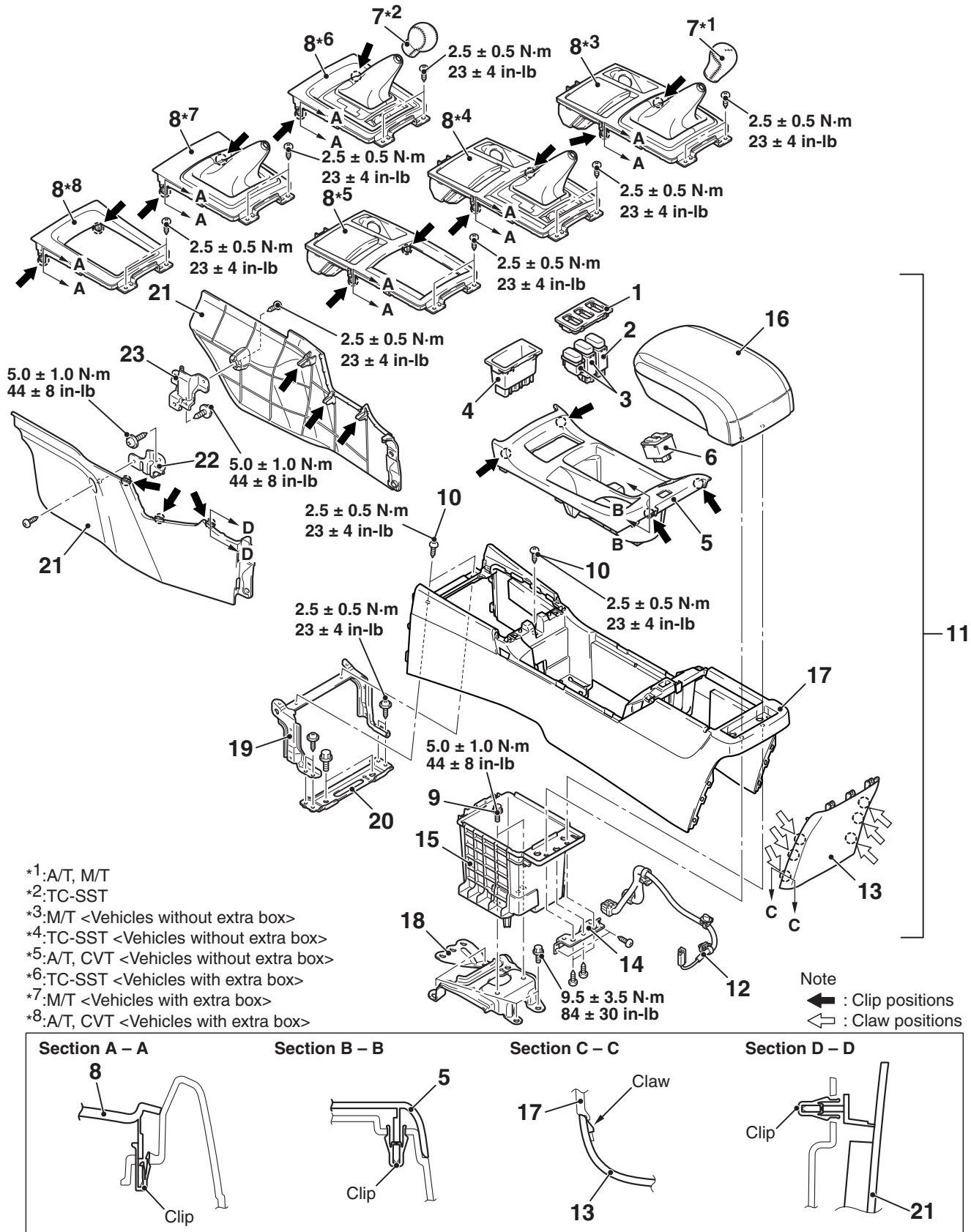
2. Instrument panel cover lower
3. Instrument panel air outlet garnish lower (LH)



# FLOOR CONSOLE ASSEMBLY

## REMOVAL AND INSTALLATION

M1521005200692



AC901409AB

**Removal steps**

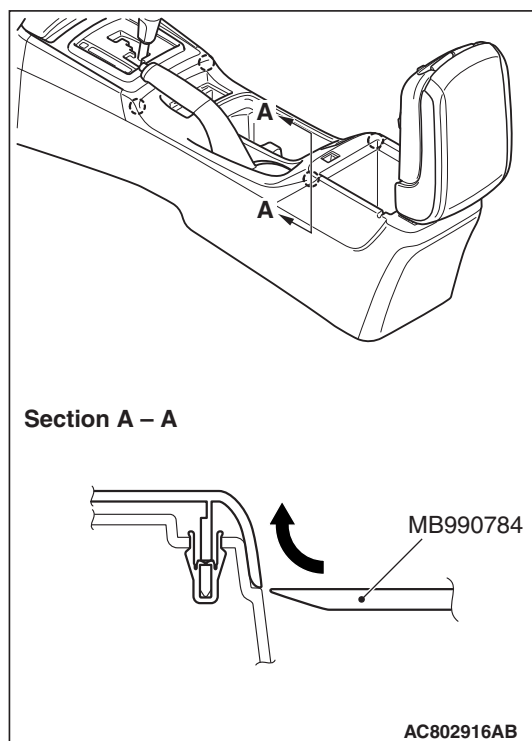
1. Floor console switch panel
2. ACD switch
3. Floor console plug
4. Floor console tray
- Accessory socket and cap (Refer to GROUP 54A – Accessory socket [P.54A-329](#)).
- >>A<< 5. Floor console box cup holder
- Accessory socket cover (Refer to GROUP 54A – Accessory socket [P.54A-329](#)).
6. Heated seat switch <Vehicles with heated seat>
7. Selector lever knob <A/T>, Gearshift lever knob <M/T, 6AMT>
8. Floor console panel assembly
9. Floor console assembly mounting bolt

**Removal steps (Continued)**

- Instrument panel console plug <Vehicles with extra box> (Refer to [P.52A-7](#)).
- 10. Floor console assembly mounting screw
- 11. Floor console assembly
- 12. Floor console harness <Except for DE>
- >>B<< 13. Floor console cover
- 14. Floor console bracket
- 15. Floor console box
- 16. Floor console lid <Except for DE>
- 17. Floor console
- 18. Floor console bracket rear
- 19. Floor console bracket (A)
- 20. Floor console bracket (B)
- 21. Floor console side cover
- 22. Floor console front bracket (LH)
- 23. Floor console front bracket (RH)

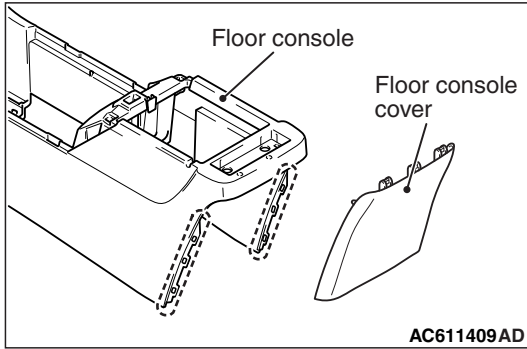
**REASSEMBLY SERVICE POINTS****>>A<< FLOOR CONSOLE BOX CUP HOLDER  
REASSEMBLY**

Remove by using special tool MB990784 (ornament remover) as shown in the figure.



**>>B<< FLOOR CONSOLE COVER REASSEMBLY**

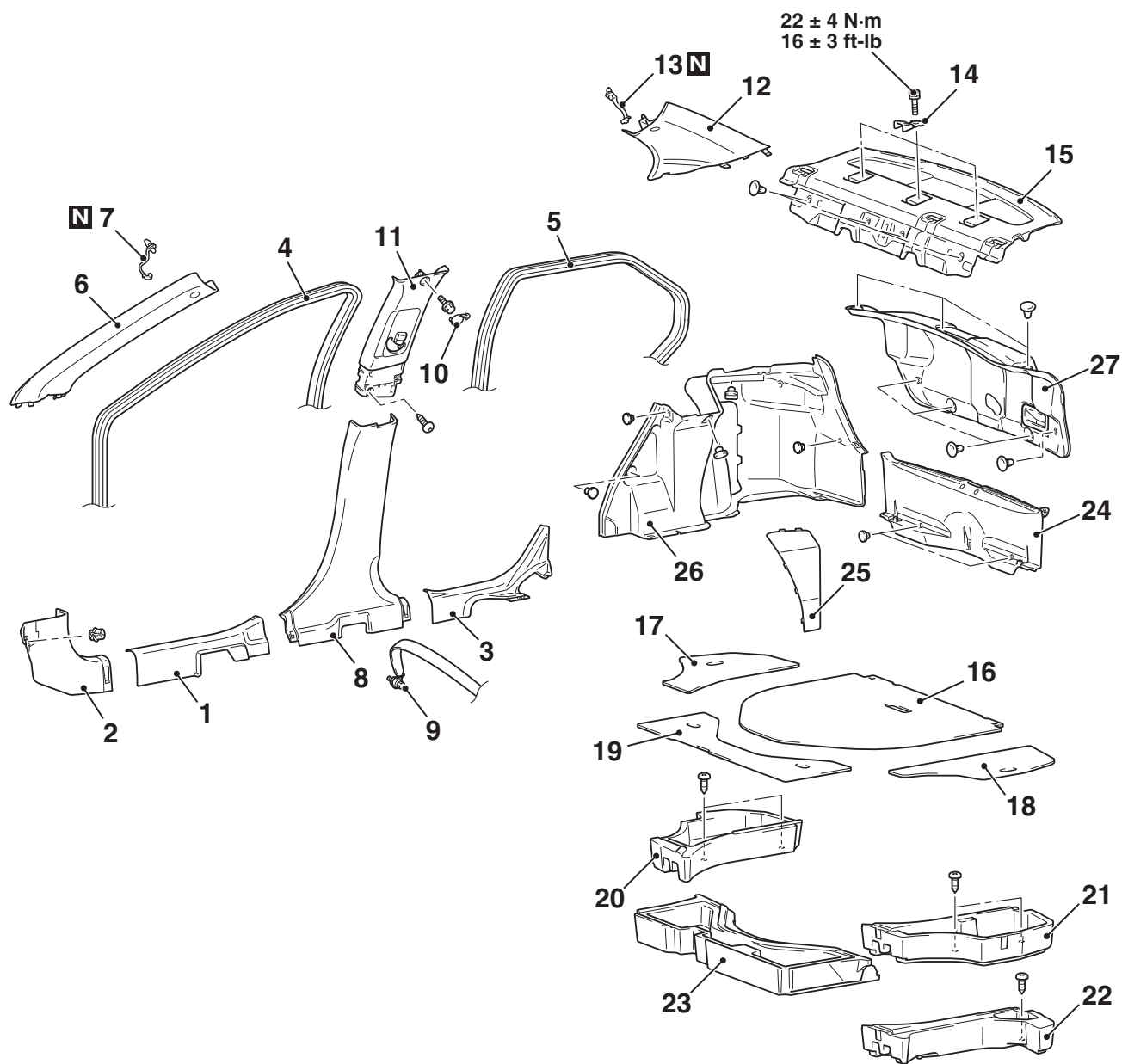
Floor console rear ends (shown in the dotted lines) may damage when removing the floor console cover. You can neglect this damage and floor console rear is reusable.



## TRIMS

## REMOVAL AND INSTALLATION

M1521001101458



AC802781AB

**Removal steps**

1. Front scuff plate
2. Cowl side trim
  - Rear seat cushion (Refer to [P.52A-28](#)).
3. Rear scuff plate
4. Front door opening trim
5. Rear door opening trim
6. Front pillar trim
7. Garnish clip <Vehicles with curtain air bag>
8. Lower center pillar trim
9. Outer seat belt
10. Upper center pillar trim cap
11. Upper center pillar trim

&lt;&lt;A&gt;&gt;

**Removal steps (Continued)**

12. Rear pillar trim
13. Garnish clip <Vehicles with curtain air bag>
  - Seat side back (Refer to [P.52A-28](#)).
14. Child restraint fitting
15. Rear shelf trim
16. Trunk room floor board
17. Cargo floor box lid (RH)
18. Cargo floor box lid (LH) <RALLIART [Except for woofer type]>
19. Cargo floor box front lid <RALLIART>
20. Cargo floor box (RH) <RALLIART>

&lt;&lt;A&gt;&gt;

&lt;&lt;B&gt;&gt;

**Removal steps (Continued)**

21. Cargo floor box (LH) <RALLIART  
[Except for woofer type]>
22. Cargo floor box (LH) <RALLIART  
[Vehicles for woofer type]>
23. Cargo floor box front <RALLIART>
24. Rear end trim
25. Trunk side lid

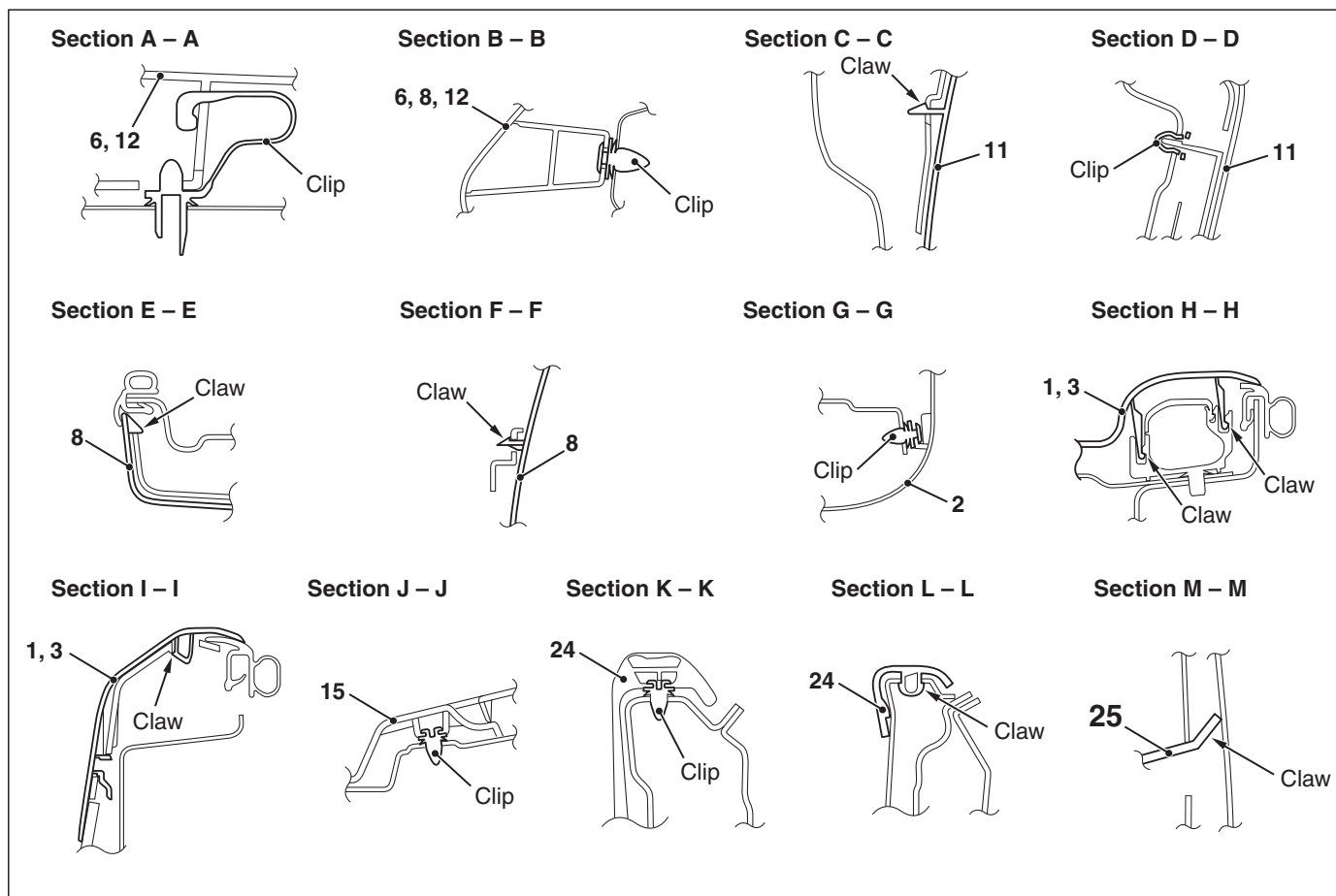
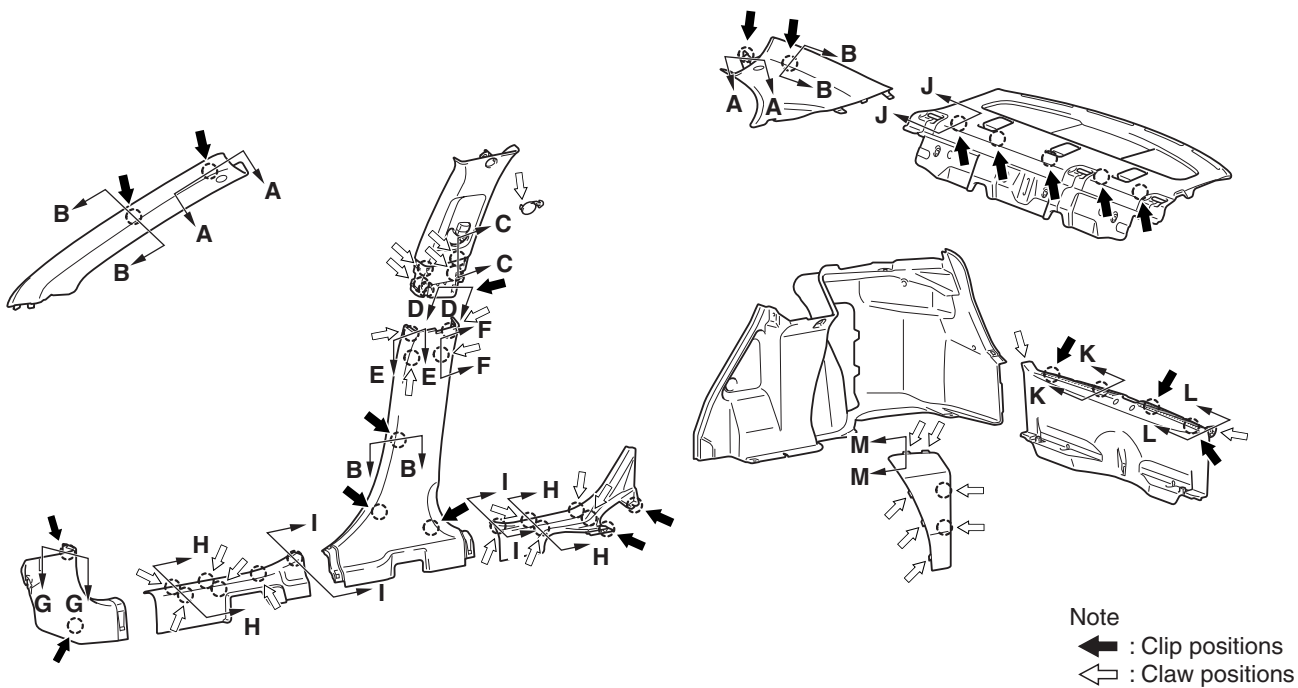
**Removal steps (Continued)**

26. Trunk side trim
27. Trunk lid trim

**Required Special Tool:**

- MB990784: Ornament Remover

## CLIP AND CLAW POSITIONS

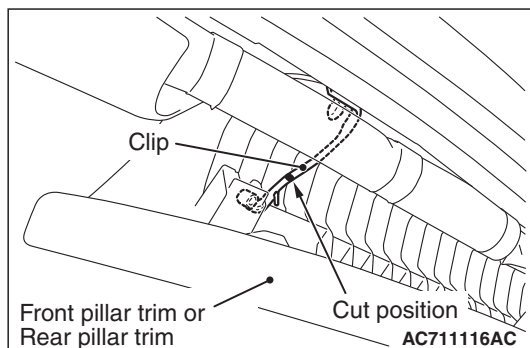


AC802783AB

**NOTE:** Each number in the illustration indicates a part number.

## REMOVAL SERVICE POINTS

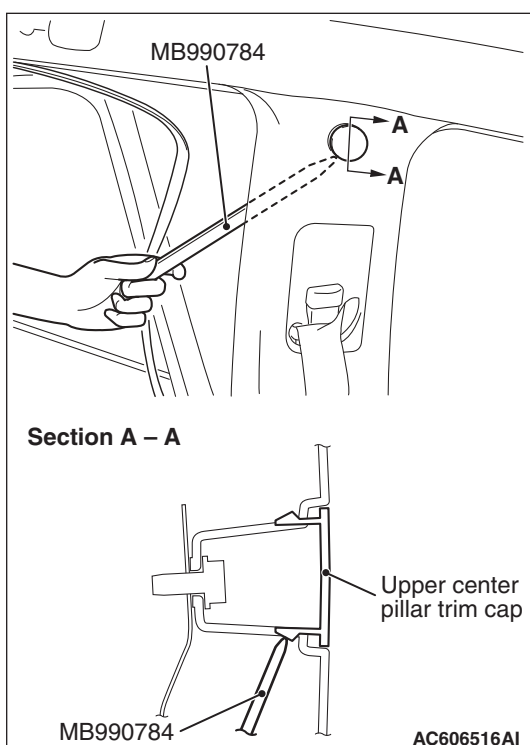
### <<A>>FRONT/REAR PILLAR TRIM REMOVAL <VEHICLES WITH CURTAIN AIR BAG>



1. Pull down the front or rear pillar trim as shown in the figure.
2. Cut the clip at the cutting position shown in the figure, taking care not to damage the other components.
3. Remove the clip remaining on the front or rear pillar trim, taking care not to scratch the trim.
4. Remove the clip remaining on the vehicle side by breaking it to prevent damage to the flange of the clip mounting hole.

### <<B>> UPPER CENTER PILLAR TRIM CAP REMOVAL

Remove the opening trim. Remove the upper center pillar trim cap by inserting the special tool MB990784 between the upper center pillar trim and body as shown in the illustration.

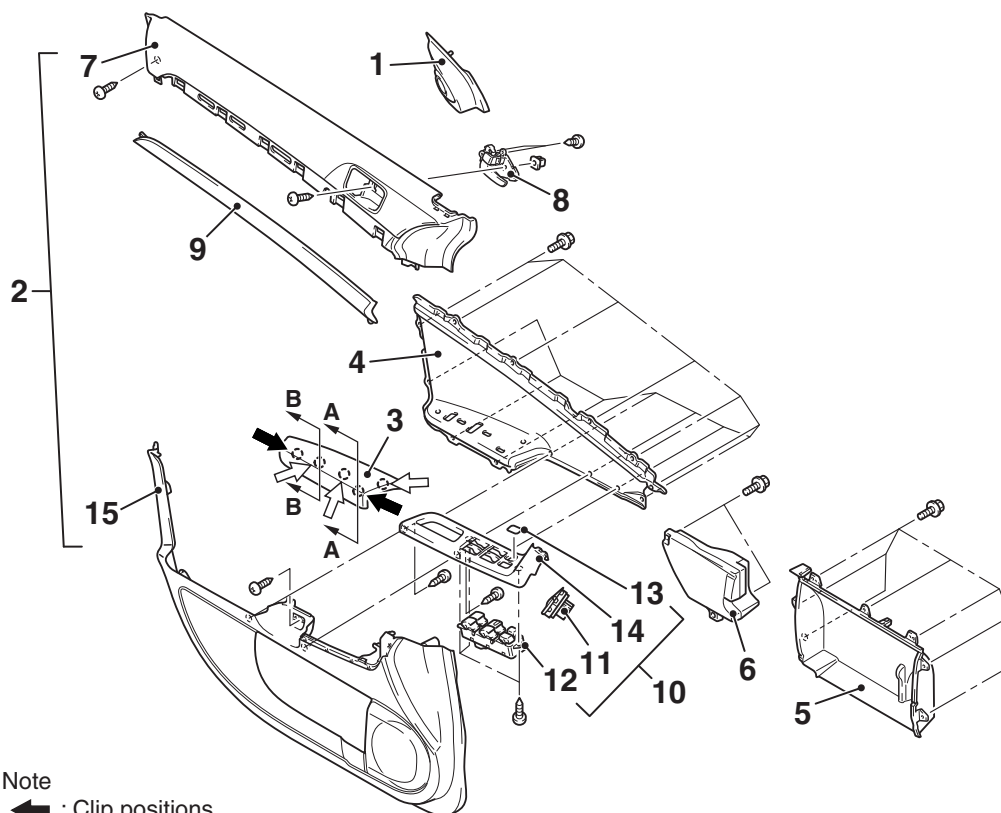


## DOOR TRIM

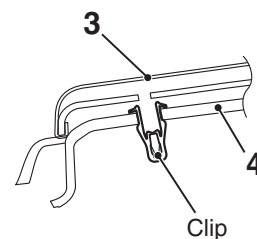
## REMOVAL AND INSTALLATION

M1521006401089

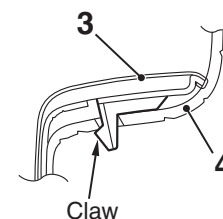
&lt;Front door trim&gt;



Section A – A

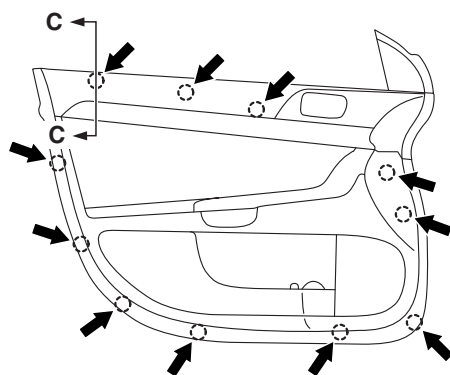


Section B – B

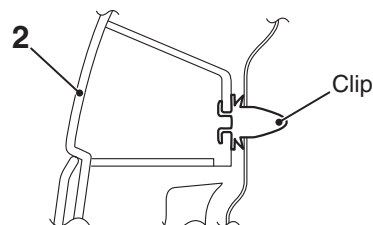


Note

- ← : Clip positions  
 ⇐ : Claw positions



Section C – C



AC802784AB

**Removal steps**

1. Front door sash trim
2. Front door trim assembly
3. Front door armrest <Vehicles for leather interior>
4. Front door ornament
5. Front door pocket
6. Front lower pad energy absorption
7. Front door trim upper
8. Door inside handle
9. Decoration panel

**Removal steps (Continued)**

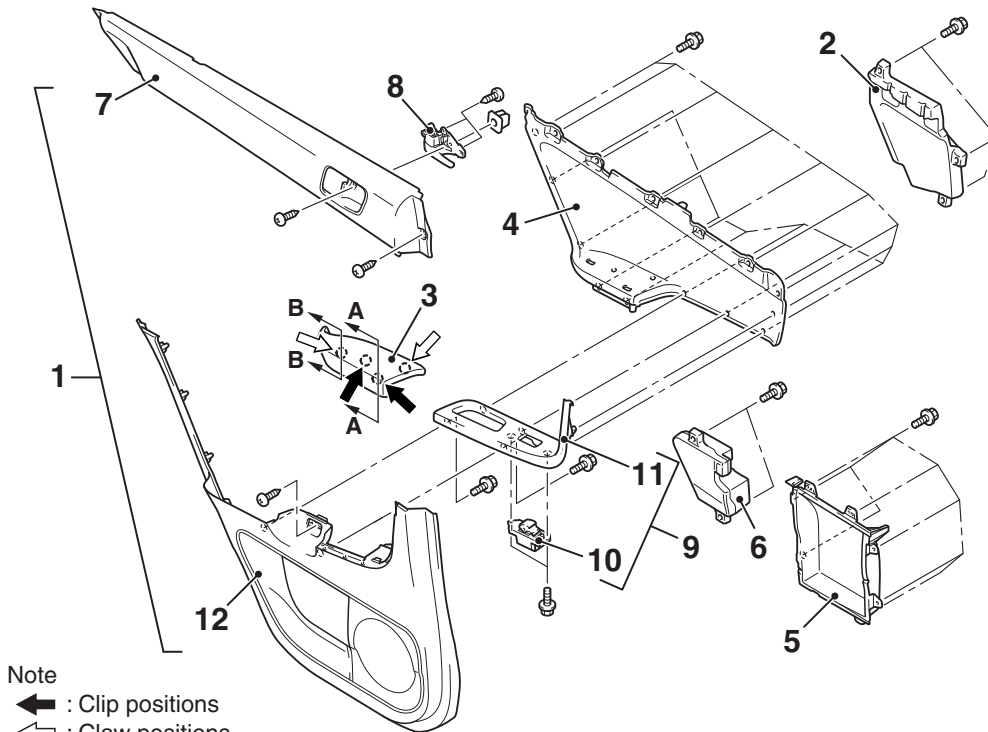
10. Front door power window switch panel assembly
11. Remote control mirror switch
12. Front door power window switch
- 13.
14. Front power window switch panel
15. Front door trim lower

**Required Special Tool:**

- MB990784: Ornament Remover

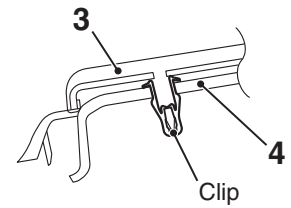


<Rear door trim>

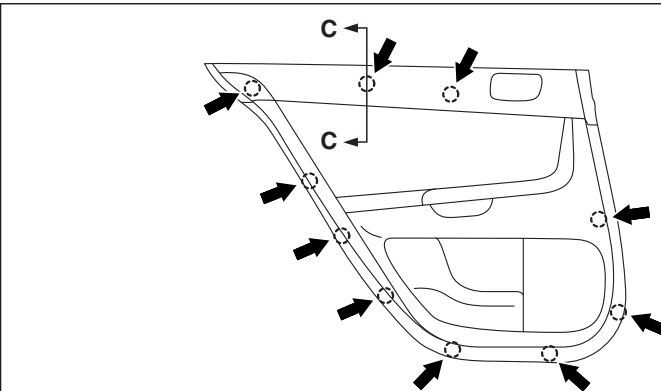
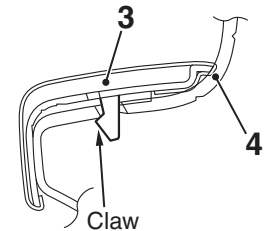


Note  
 : Clip positions  
 : Claw positions

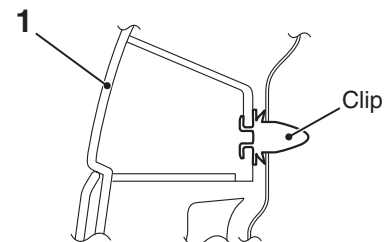
Section A – A



Section B – B



Section C – C



AC802785AB

### Removal steps

1. Rear door trim assembly
2. Rear upper pad energy absorption
3. Rear door armrest <Vehicles for Canada with vehicles with ASC>
4. Rear door ornament
5. Rear door pocket
6. Rear lower pad energy absorption
7. Rear door trim upper
8. Door inside handle

### Removal steps (Continued)

9. Rear door power window switch panel assembly
10. Rear door power window switch
11. Rear power window switch panel
12. Rear door trim lower

### Required Special Tool:

- MB990784: Ornament Remover

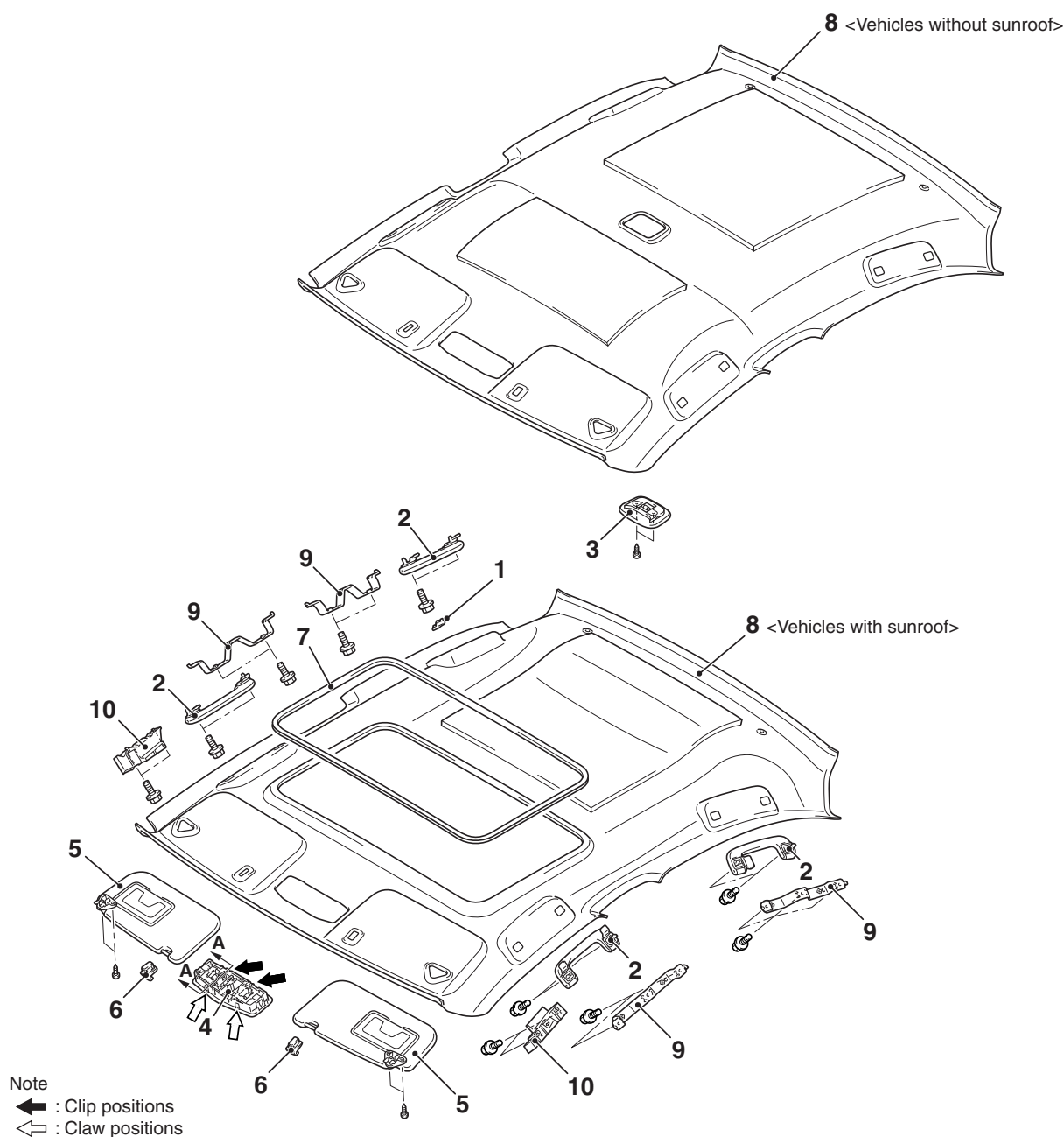
## HEADLINING

### REMOVAL AND INSTALLATION

M1521001401619

**Pre-removal and Post-installation Operation**

- Removal and Installation of Front pillar trim, Upper center pillar trim, Rear pillar trim (Refer to [P.52A-12](#)).
- Removal and Floor console assembly (Refer to [P.52A-9](#)).
- Removal and Installation of Instrument under cover (Refer to [P.52A-7](#)).



### Removal steps

1. Assist grip cap
2. Assist grip
3. Rear dome light assembly <Vehicles without sunroof>
4. Front dome light
5. Sun visor assembly
6. Sun visor holder

### Removal steps (Continued)

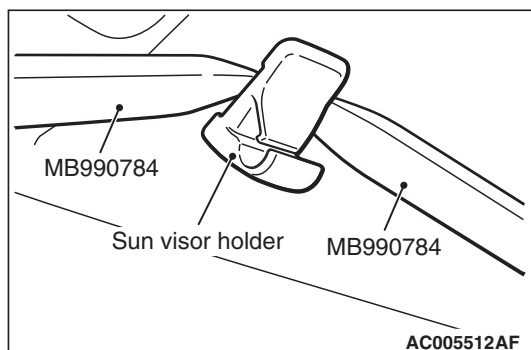
7. Sunroof lid inner weather strip rear <Vehicles with sunroof>
8. Headlining
9. Assist grip bracket
10. Front side roof energy absorption box <Vehicle with sunroof>

### Required Special Tool:

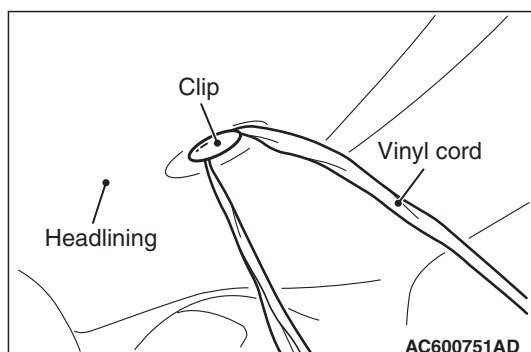
- MB990784: Ornament Remover

**REMOVAL SERVICE POINTS****<<A>> SUN VISOR HOLDER REMOVAL**

Insert the special tool MB990784 into side claws of the sun visor holder through the both sides of the sun visor holder to remove the hinges.

**<<B>> HEADLINING REMOVAL**

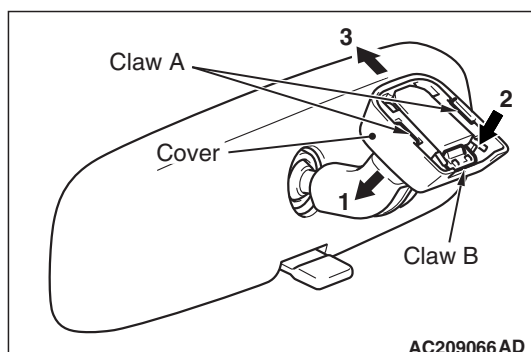
To remove the clip, insert a vinyl cord into a clearance between the clip and the headlining, and pass it around the clip. Then, pull out the clip downwards while pulling the vinyl cord.

**INSIDE REAR VIEW MIRROR**

M1521002600561

**REMOVAL SERVICE POINT**

1. Disengage claw A and lower the cover in the arrow 1 direction.
2. Push claw B in the arrow 2 direction to unlock, and pull out the mirror in the arrow 3 direction.



# FRONT SEAT ASSEMBLY

## REMOVAL AND INSTALLATION

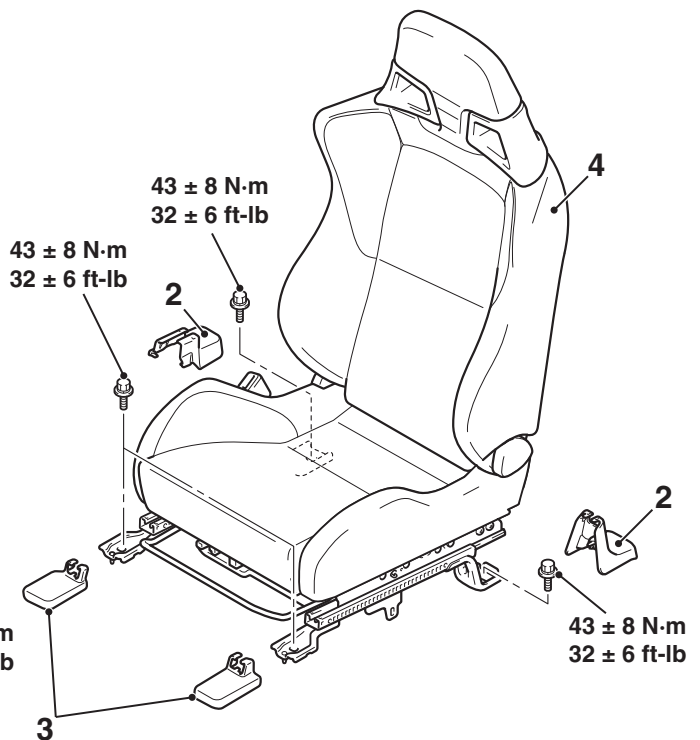
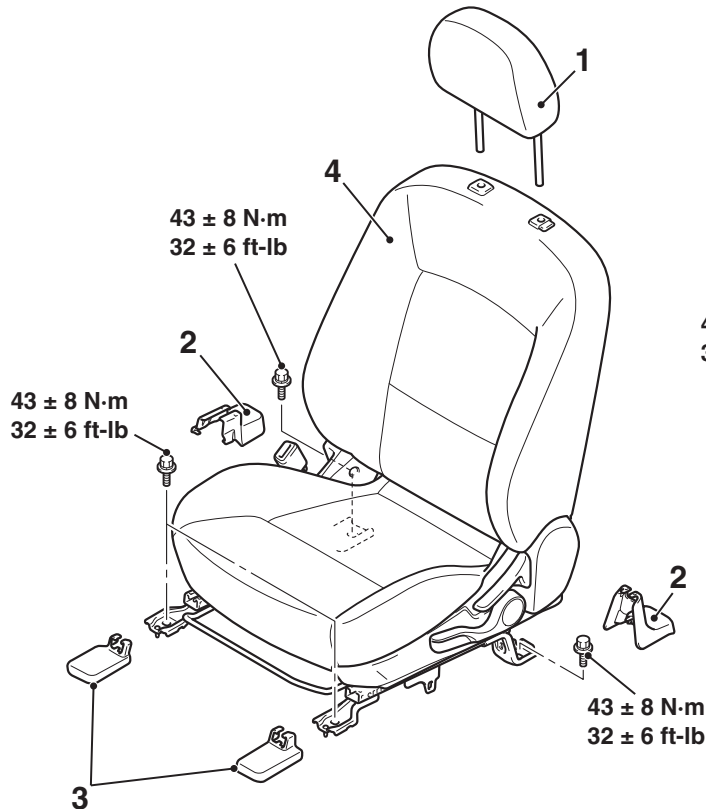
M1522001301671

### CAUTION

Before removing the front seat assembly, refer to GROUP 52B, Service precautions [P.52B-26](#) and Side-airbag module (S) [P.52B-446](#) <Except for RALLIART> [P.52B-450](#) <RALLIART>.

<Standard seat, Sport seat>

<RECARO seat>



AC802796AB

### Front seat assembly removal steps

1. Head restraint
2. Front seat anchor cover rear
3. Front seat anchor cover front

### Front seat assembly removal steps (Continued)

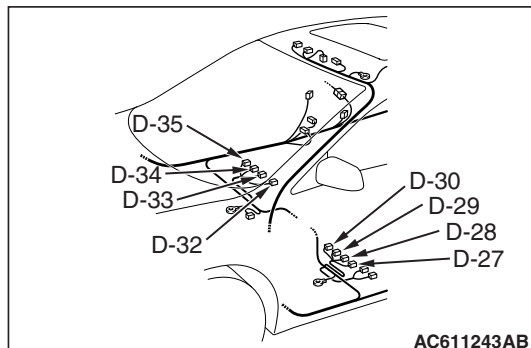
<<A>>

- Harness connector
- >>A<< 4. Front seat assembly

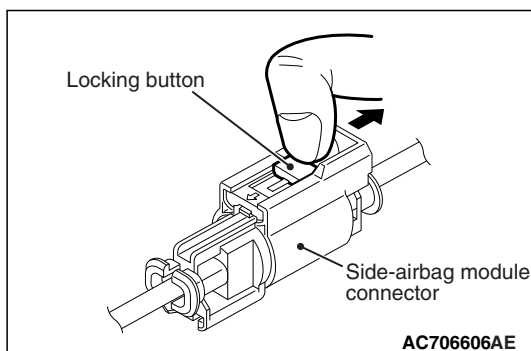
## REMOVAL SERVICE POINT

## &lt;&lt;A&gt;&gt; WIRING HARNESS CONNECTOR DISCONNECTION

Disconnect the following wiring harness connectors:



Connector number	Connector name
D-27 (4 – black)	Heated seat assembly connector (LH) <Vehicle with heated seat>
D-28 (2 – gray)	Seat slide sensor connector (LH)
D-29 (4 – black)	Seat belt switch connector (Driver's seat)
D-30 (2 – yellow)	Side-airbag module (Squib) connector (LH) <Vehicles with side-airbag>
D-32 (2 – yellow)	Side-airbag module (Squib) connector (RH) <Vehicles with side-airbag>
D-33 (4 – black)	Seat belt switch connector (Passenger's seat)
D-34 (4 – black)	Heated seat assembly connector (RH) <Vehicle with heated seat>
D-35 (6)	Front seat assembly connector (RH)

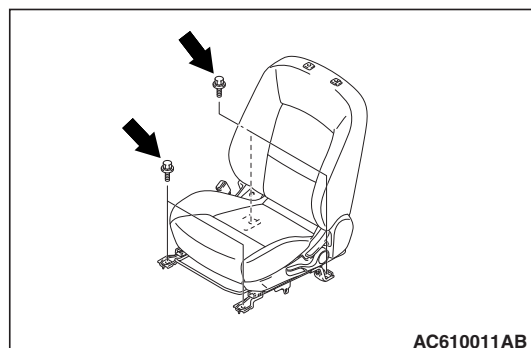


**NOTE:** When disconnecting the side air bag module connectors of D-30 and D-32, unlock the connector by sliding the locking button to the direction of the arrow as shown in the figure, and then disconnect the connector.

## INSTALLATION SERVICE POINT

## &gt;&gt;A&lt;&lt; FRONT SEAT ASSEMBLY INSTALLATION

1. Temporarily tighten the bolts in all mounting locations shown in the illustration with no load applied to the front seat cushion and check the operation of the seat slide.
2. Tighten the bolts in all mounting locations to the specified torque.

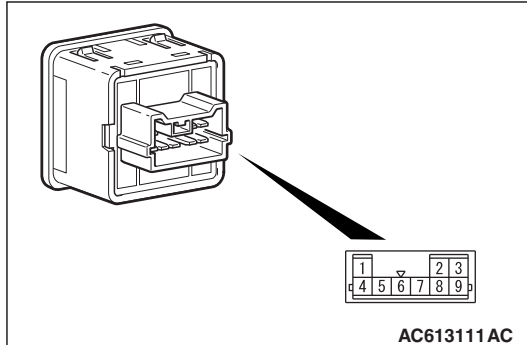


## INSPECTION

M1522005500403

### CONTINUITY TEST OF HEATED SEAT SWITCH

1. Check for continuity between terminals.



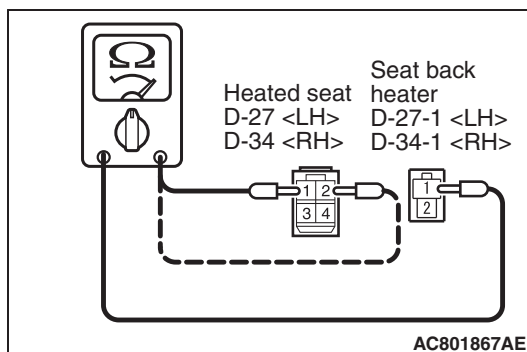
Item	Switch position	Tester connection	Specified condition
Driver's seat side	HI	1 – 5, 3 – 8	Continuity exists (2Ω or less)
	OFF	1 – 5, 3 – 5, 5 – 8	Open circuit
	LO	3 – 5	Continuity exists (2Ω or less)
Front passenger's seat side	HI	4 – 5, 8 – 9	Continuity exists (2Ω or less)
	OFF	4 – 5, 5 – 8, 5 – 9	Open circuit
	LO	5 – 9	Continuity exists (2Ω or less)

2. Check that the indicator is lighted at HI or LO when battery voltage is supplied to terminal 5 and terminal 8 is grounded.
3. Check that indicator is lighted when battery voltage is supplied to terminals 2 and terminal 6.

### SEAT CUSHION HEATER CHECK

Measure the resistance between terminals.

**Standard value: At room temperature 20 °C (68 °F)**

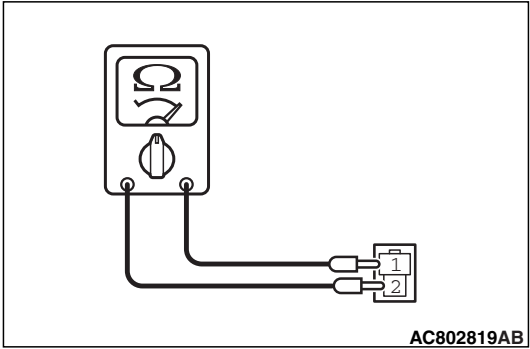


Tester connection	Specified condition
Heated seat assembly terminal 1 – Seat back heater terminal 1	4.04 - 4.94 Ω <Standard seat>
	4.83 - 5.85 Ω <Sport seat>
	3.84 - 4.69 Ω <RECARO seat>
Heated seat assembly terminal 2 – Seat back heater terminal 1	0.23 - 0.28 Ω <Standard seat>
	0.15 - 0.19 Ω <Sport seat>
	0.14 - 0.18 Ω <RECARO seat>

SEATBACK HEATER CHECK

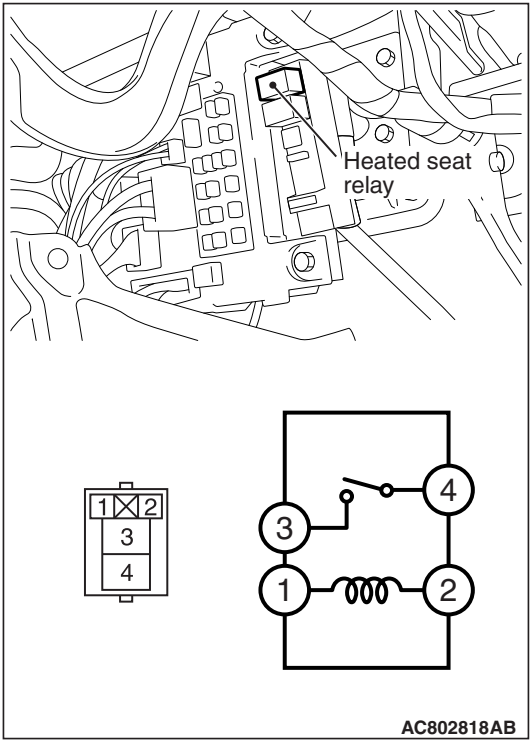
Measure the resistance between terminals.

Standard value: At room temperature 20 °C (68 °F)



Tester connection	Specified condition
terminal 1 – terminal 2	4.86 - 5.94 Ω <Standard seat>
	4.06 - 4.96 Ω <Sport seat>
	5.40 - 6.60 Ω <RECARO seat>

HEATED SEAT RELAY CONTINUITY CHECK



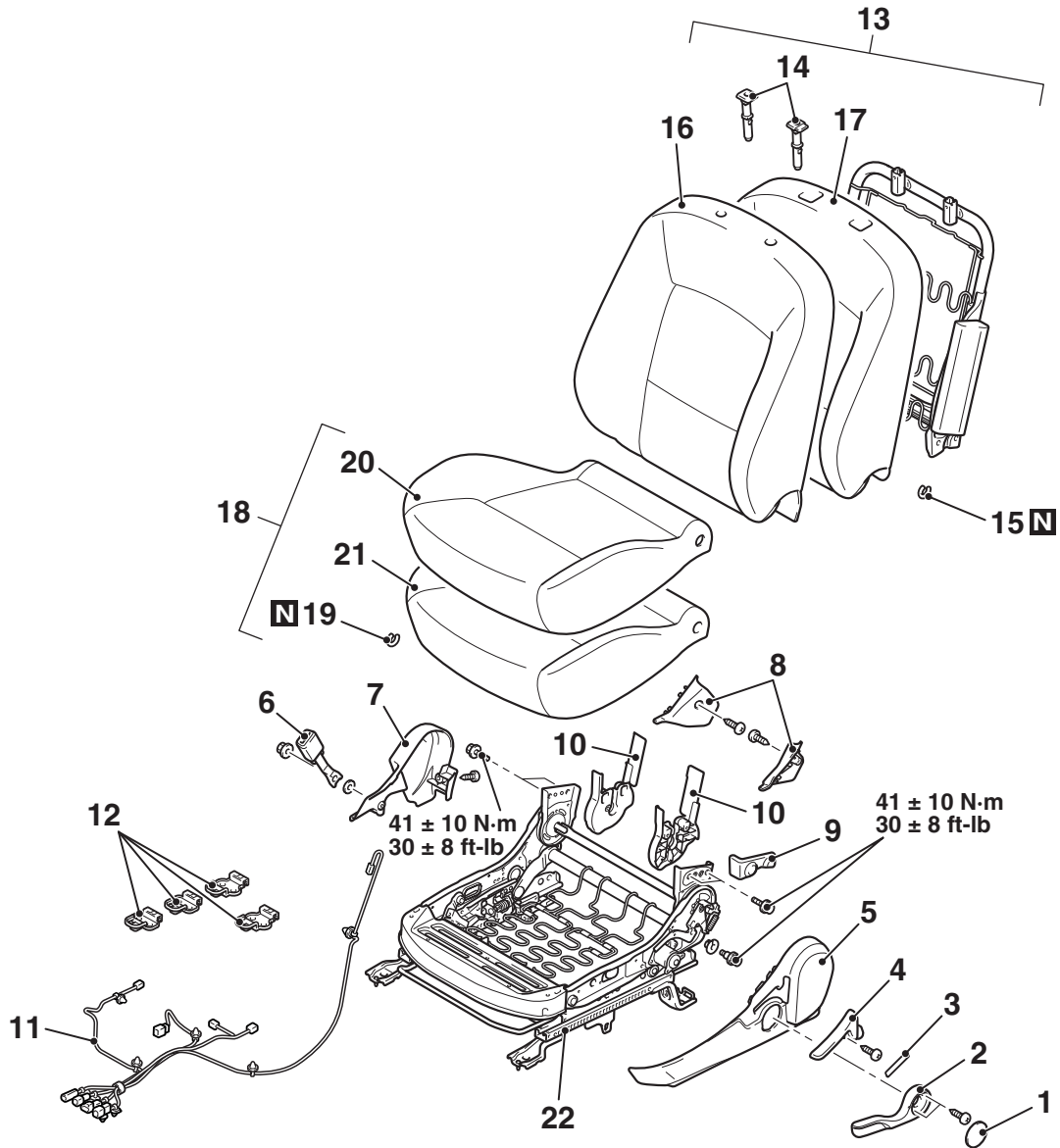
Battery voltage	Tester connection	Specified condition
Not applied	3 – 4	Open circuit
<ul style="list-style-type: none"><li>Connect terminal 1 to the positive battery terminal</li><li>Connect terminal 2 to the negative battery terminal</li></ul>	3 – 4	Continuity exists (2Ω or less)



DISASSEMBLY AND ASSEMBLY

M1522001501705

<STANDART SEAT, SPORT SEAT>



AC609289AC

<<A>>

**Disassembly steps**

1. Height adjuster lever cap
2. Height adjuster lever
3. Reclining adjuster cap
4. Reclining adjuster lever
5. Side shield cover
6. Inner seat belt
7. Hinge cover
8. Side shield inner cover
9. Reclining adjuster upper cover
10. Reclining adjuster cover
11. Harness
12. Hook
13. Front seatback assembly

<<B>>

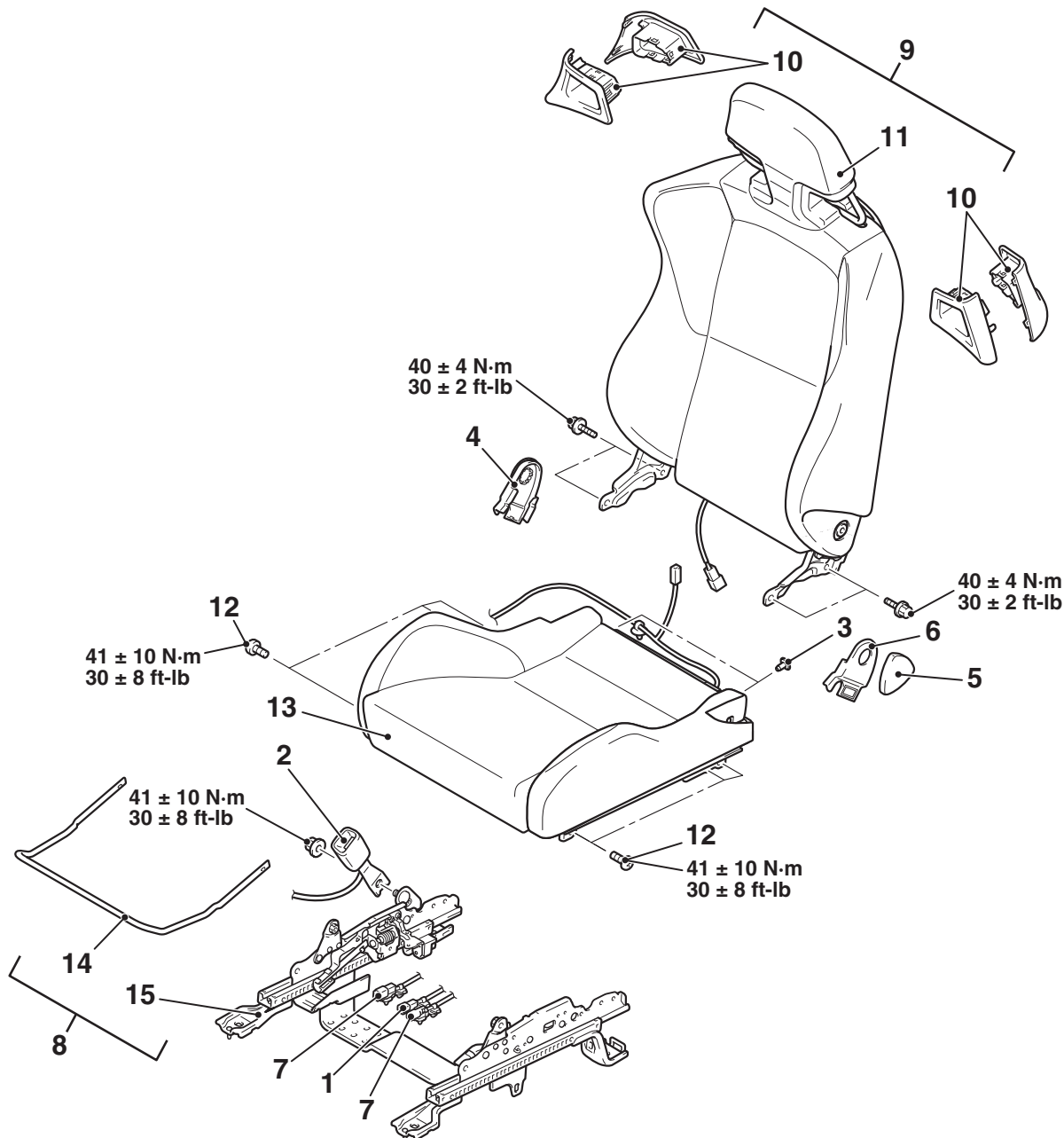
**Disassembly steps (Continued)**

14. Head restraint guide
15. Hog ling
16. Front seatback cover
17. Front seatback pad
18. Front seat cushion assembly
19. Hog ling
20. Front seat cushion cover
21. Front seat cushion pad
22. Front seat cushion frame

**Required Special Tool:**

- MB990784: Ornament Remover

## &lt;RECARO SEAT&gt;



AC711768AC

**Disassembly steps**

1. Seat belt harness connector
2. Seat belt inner
3. Seat cushion cover fixation clip
4. Hinge cover
5. Reclining adjuster knob
6. Side shield cover
7. Heated seat & Side air bag harness connector
8. Slide adjuster assembly
9. Front seatback assembly

**Disassembly steps (Continued)**

10. Headrest garnish
11. Front seatback
12. Slide rail adjuster mounting bolts
13. Front seat cushion
14. Front seat slide adjuster lever
15. Slide adjuster

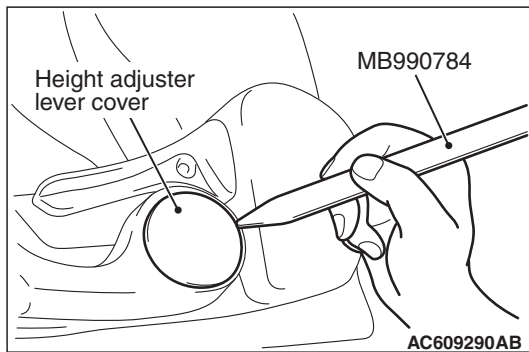
**Required Special Tool:**

- MB990784: Ornament Remover

## DISASSEMBLY SERVICE POINTS

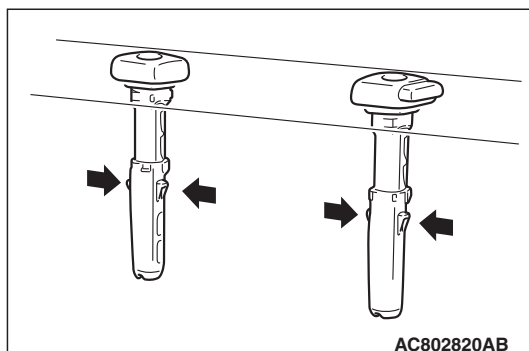
### <<A>> HEIGHT ADJUSTER CAP REMOVAL

Use special tool MB990784 as shown to remove the height adjuster lever cover.



### <<B>> HEAD RESTRAINT GUIDE REMOVAL

Peel off the front seatback cover and pad to access the head-restraint guides. Pull off the guides upwards while pushing the tabs (arrows) as shown.

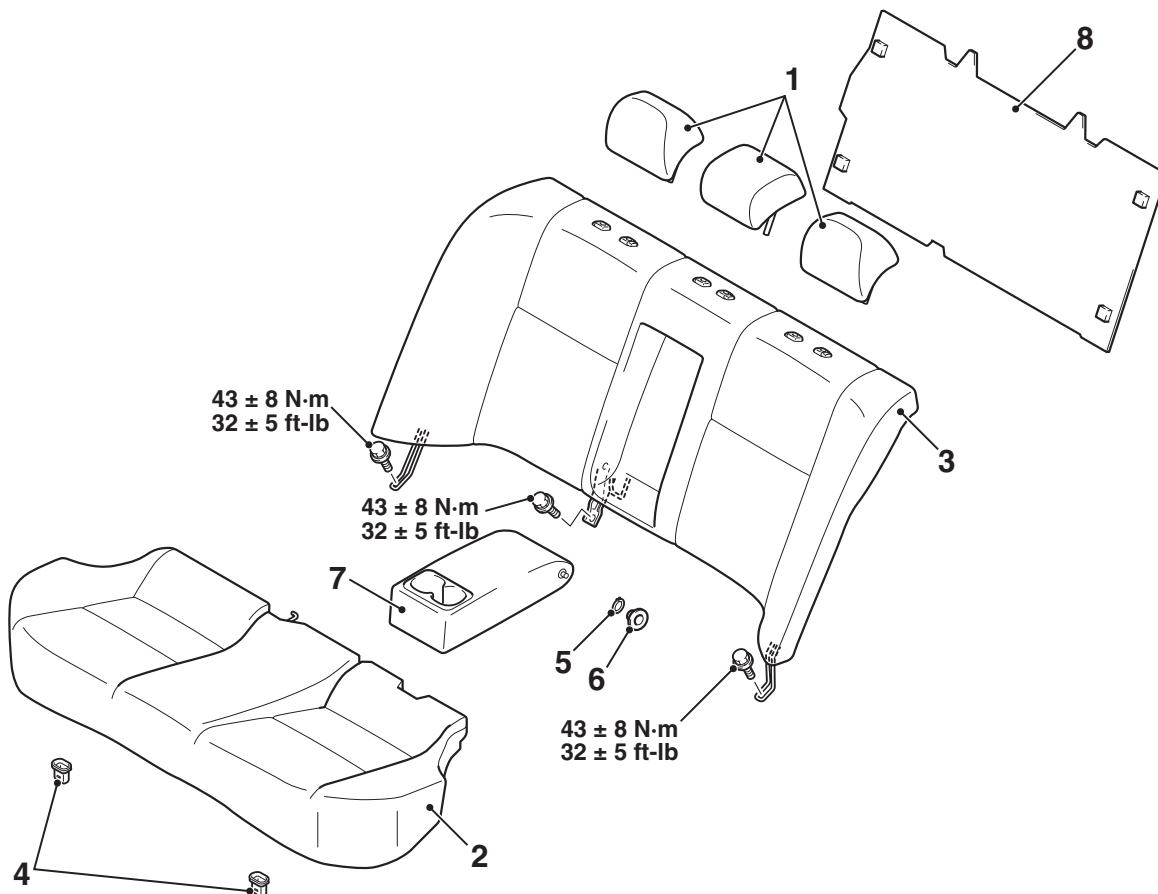


## REAR SEAT ASSEMBLY

## REMOVAL AND INSTALLATION

M1522001800855

## &lt;BENCH SEAT&gt;



AC801878AB

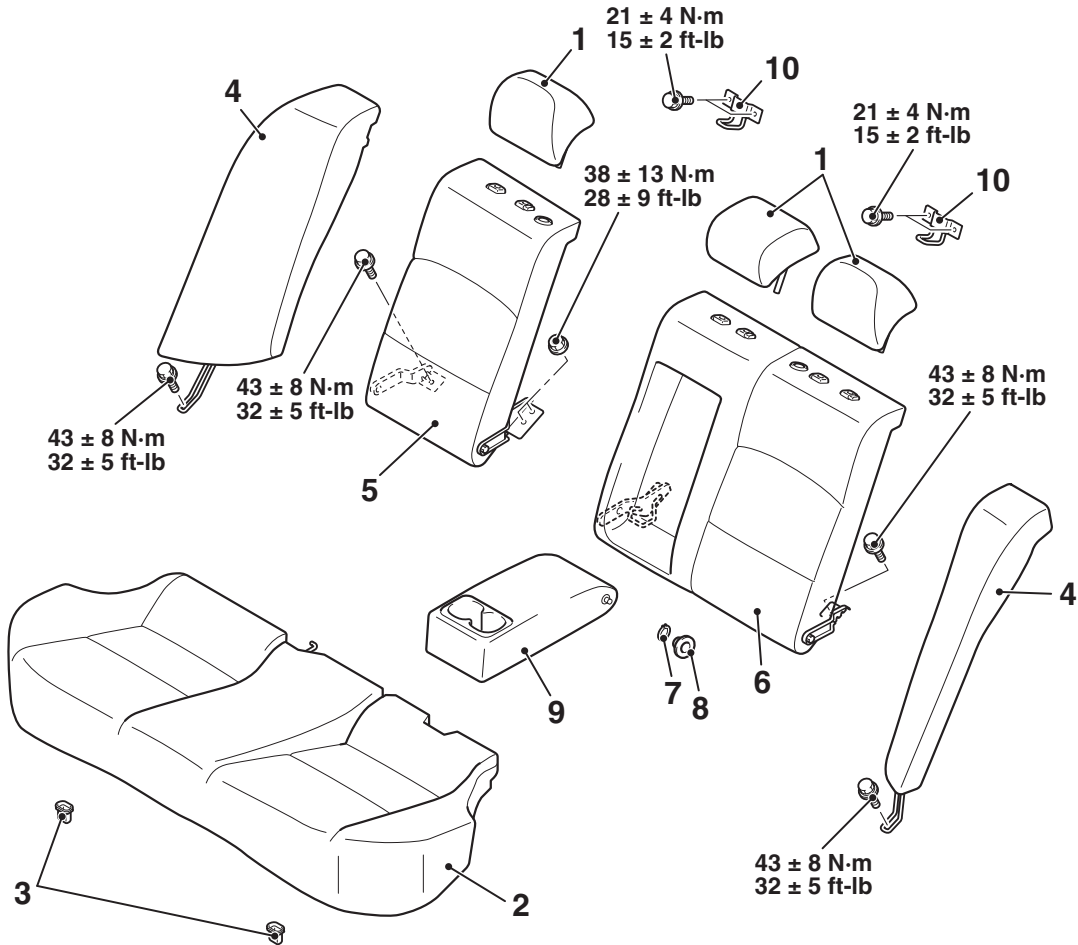
**Removal steps**

1. Rear seat headrest <Some models>
- >>C<< 2. Rear seat cushion assembly
- >>A<< 3. Rear seatback assembly
4. Rear seat hook

**Removal steps (Continued)**

5. Snap ring <RALLIART>
6. Rear seat bushing <RALLIART>
7. Rear seat armrest <RALLIART>
8. Luggage room partition board

<SPRIT SEAT>



AC801885AB

**Removal steps**

- >>C<< 1. Rear seat headrest
- >>C<< 2. Rear seat cushion assembly
- >>B<< 3. Rear seat hook
- >>B<< 4. Rear seatback side assembly
- >>A<< 5. Rear seatback assembly (RH)

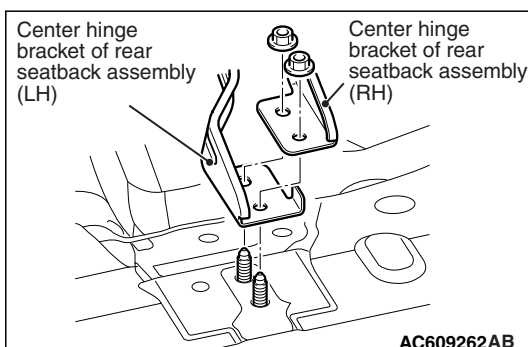
**Removal steps (Continued)**

- >>A<< 6. Rear seatback assembly (LH)
- 7. Snap ring
- 8. Rear seat bushing
- 9. Rear seat armrest
- 10. Rear seat striker

**INSTALLATION SERVICE POINTS**

**>>A<< REAR SEATBACK ASSEMBLY (LH/RH)  
INSTALLATION**

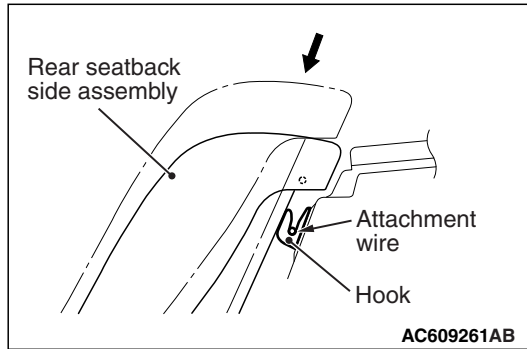
Place the center hinge bracket of the rear seatback assembly (LH) on top of the center hinge bracket of the rear seatback assembly (RH) for installation.



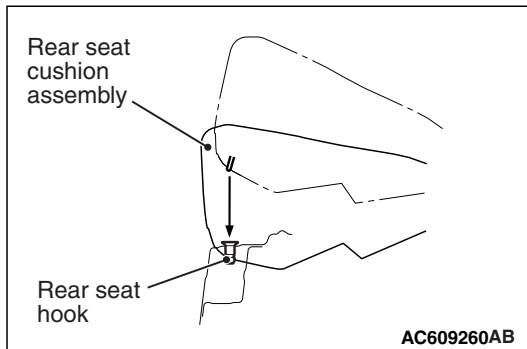
AC609262AB

**>>B<< REAR SEATBACK SIDE ASSEMBLY  
(LH/RH) <SPRIT SEAT> / REAR SEATBACK  
ASSEMBLY<BENCH SEAT> INSTALLATION**

Press the rear seatback side assembly in the direction shown in the illustration and fit the attachment wire into the hook securely to install the rear seatback side assembly.

**>>C<< REAR SEAT CUSHION ASSEMBLY  
INSTALLATION**

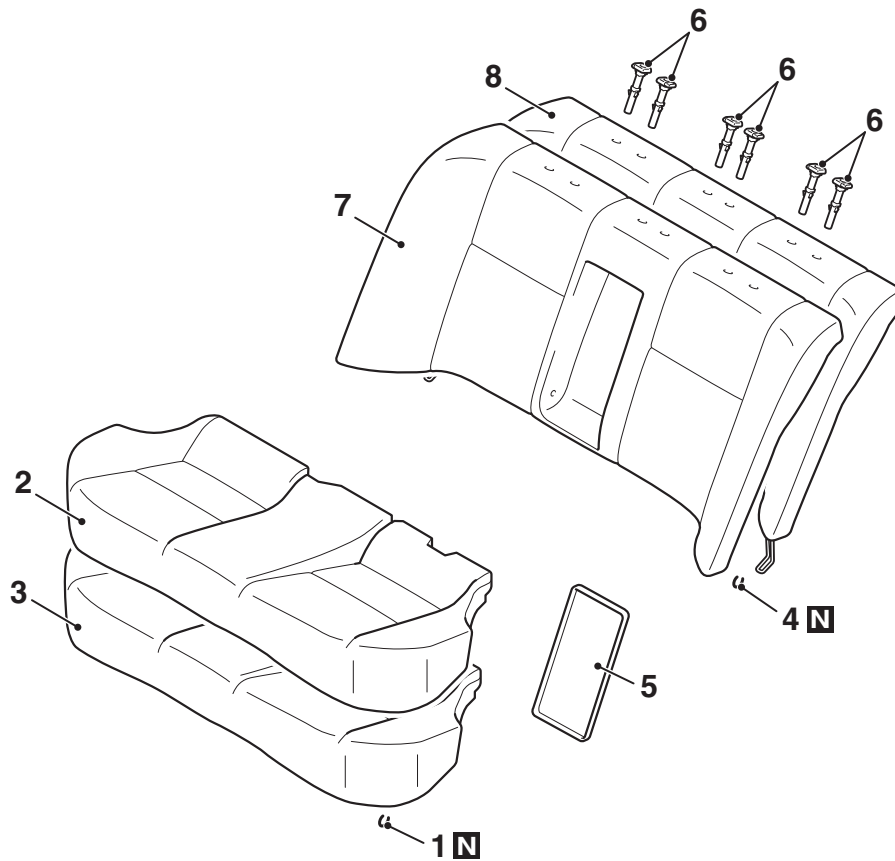
Fit the rear seat cushion into the rear seat hook securely.



DISASSEMBLY AND ASSEMBLY

M1522002000948

<BENCH SEAT>



AC801887AB

**Disassembly steps**

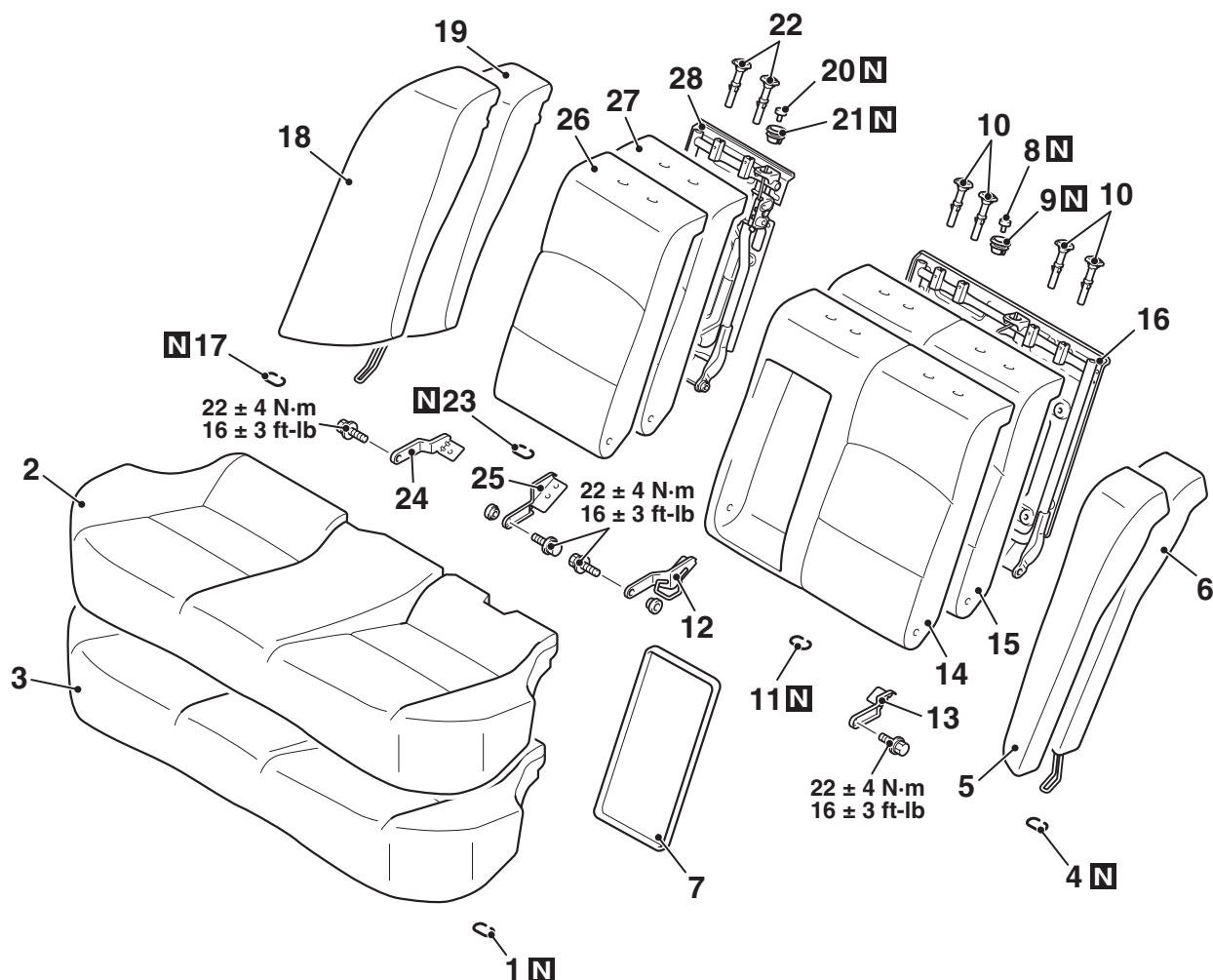
1. Hog ring
2. Rear seat cushion cover
3. Rear seat cushion pad
4. Hog ring

<<A>>

**Disassembly steps (Continued)**

5. Rear seatback armrest board  
<Vehicles with rear seat armrest>
6. Rear seat headrest restraint guide
7. Rear seatback cover
8. Rear seatback pad

## &lt;SPRIT SEAT&gt;



AC609247AB

**Disassembly steps**

1. Hog ring
2. Rear seat cushion cover
3. Rear seat cushion pad
4. Hog ring
5. Rear seatback side cover (LH)
6. Rear seatback side pad (LH)
7. Rear seatback armrest board
8. Rear seat folding knob
9. Rear seat folding knob garnish
10. Rear seat headrest guide
11. Hog ring
12. Centre hinge bracket (LH)
13. Side hinge bracket (LH)
14. Rear seatback cover (LH)

**Disassembly steps (Continued)**

15. Rear seatback pad (LH)
16. Rear seatback frame (LH)
17. Hog ring
18. Rear seatback side cover (RH)
19. Rear seatback side pad (RH)
20. Rear seat folding knob
21. Rear seat folding knob garnish
22. Rear seat headrest guide
23. Hog ring
24. Side hinge bracket (RH)
25. Centre hinge bracket (RH)
26. Rear seatback cover (RH)
27. Rear seatback pad (RH)
28. Rear seatback frame (RH)

&lt;&lt;A&gt;&gt;

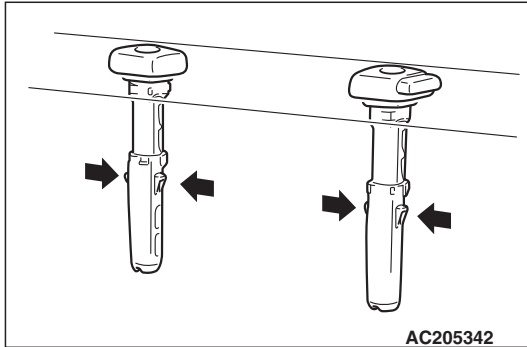
&lt;&lt;A&gt;&gt;



## DISASSEMBLY SERVICE POINT

### <<A>> HEADRESTRAINT GUIDE REMOVAL

Peel off the rear seatback cover and pad to access the head-restraint guides. Pull off the guides upwards while pushing the tabs (arrows) as shown.



## FRONT SEAT BELT

## REMOVAL AND INSTALLATION

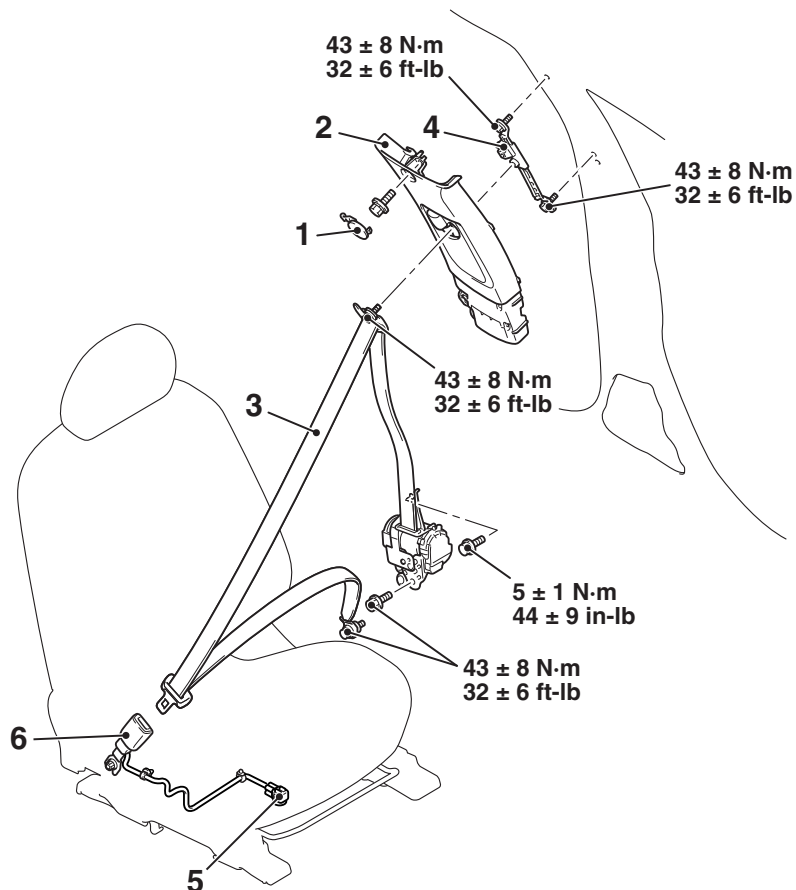
M1523001301168

**CAUTION**

**SRS:** Before removing and installing the seat belts with pre-tensioner, refer to GROUP 52B – SRS Service Precautions [P.52B-26](#) and Seat Belt with Pre-tensioner [P.52B-463](#).

**Pre-removal and Post-installation Operation**

- Turn the ignition key to the LOOK (OFF) position.
- Disconnect the negative battery terminal.



AC610305AB

&lt;&lt;A&gt;&gt;

**Outer seat belt removal steps**

1. Center pillar trim cap
  - Lower center pillar trim (Refer to [P.52A-12](#)).
2. Upper center pillar trim (Refer to [P.52A-12](#)).
3. Outer seat belt (Refer to GROUP 52B, Seat Belt with Pre-tensioner [P.52B-458](#)).
4. Adjustable seat belt anchor

**Inner seat belt removal steps**

5. Harness connector
  - Shield cover (Refer to [P.52A-25](#)).
6. Inner seat belt

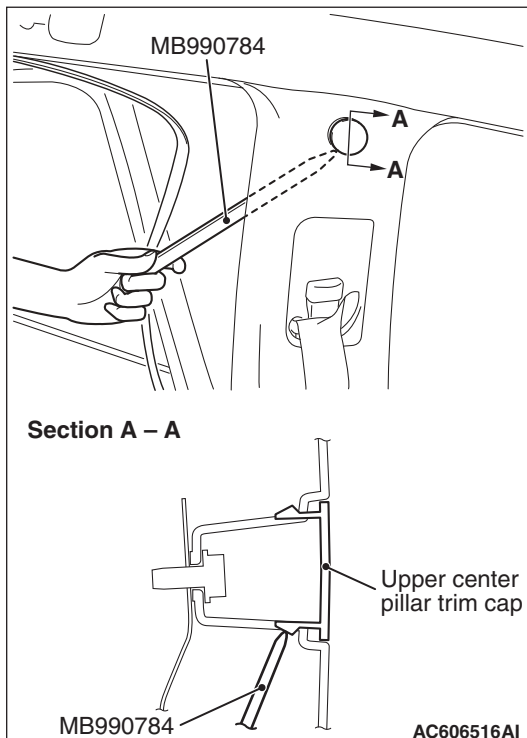
**Required Special Tool:**

- MB990784: Ornament Remover

## REMOVAL SERVICE POINT

### <<A>> UPPER CENTER PILLAR TRIM CAP REMOVAL

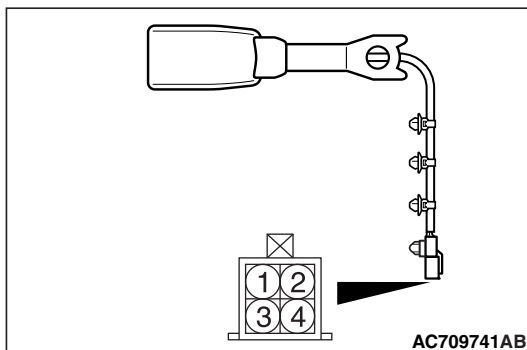
Remove the opening trim. Remove the upper center pillar trim cap by inserting the special tool MB990784 between the upper center pillar trim and body as shown in the illustration.



## INSPECTION

M1523004400644

### SEAT BELT BUCKLE SWITCH CONTINUITY CHECK (DRIVER'S SIDE)



Item	Tester connection	Specified condition
Fastened seat belt	1 – 2	Open circuit
Unfastened seat belt	1 – 2	Continuity exists ( $2\Omega$ or less)

### SEAT BELT BUCKLE SWITCH CHECK (PASSENGER'S SIDE)

Apply the voltage (5V) to the seat belt switch connector terminals and measure the current at that time.



Battery connection	Check condition	Normal condition
<ul style="list-style-type: none"> <li>Connect terminal 1 to the positive battery terminal</li> <li>Connect terminal 2 to the negative battery terminal</li> </ul>	The seatbelt is fastened.	12 - 17 mA
	The seatbelt is unfastened.	4 - 7 mA

## REMOVAL AND INSTALLATION

## Removal steps

- Rear seat cushion assembly (Refer to [P.52A-28](#)).
- Rear seatback assembly (Refer to [P.52A-28](#)).
- Rear shelf trim (Refer to [P.52A-12](#)).

### Removal steps (Continued)

1. Inner seat belt
2. Center seat belt, inner
3. Center seat belt, outer
4. Outer seat belt
5. Child restraint bracket