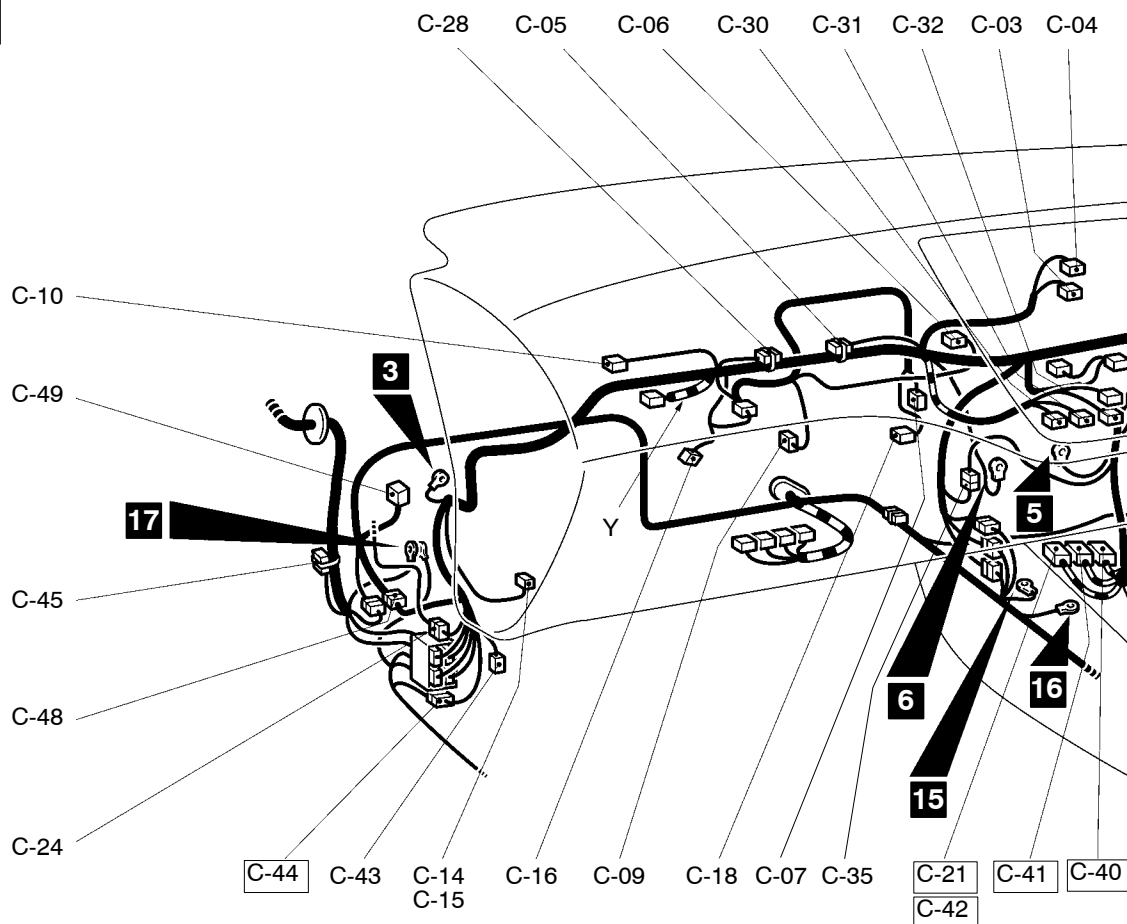
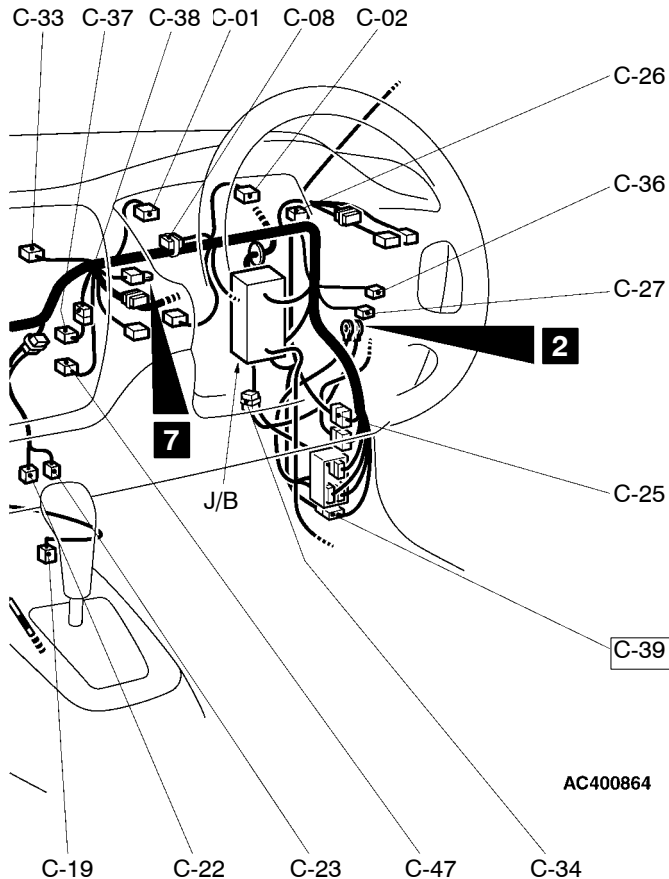


DASH PANEL

R.H. drive vehicles

Main
IndexGroup
IndexConnector
symbolC
-01
thru
-49

C-01 (21)	Combination meter	C-19 (4)	Oxygen sensor <Vehicles without EGR system> or Oxygen sensor (Front)
C-02 (21-L)	Combination meter		<4G13 and 4G18 (Vehicles with catalytic converter and EGR system)> or Oxygen sensor (Rear) <4G15>
C-03 (4)	Hazard warning switch	[C-21] (20-Y)	SRS-ECU <Except vehicles for Australia, Hong Kong and New Zealand>
C-04 (4)	Clock	C-22 (16-B)	Diagnosis connector
C-05 (22-GR)	J/C (1)	C-23 (12)	Diagnosis connector
C-06 (6)	Air mixing door control motor and potentiometer <Automatic A/C>	C-24 (16)	Instrument panel wiring harness and front door wiring harness (LH) combination
C-07 (2)	Heater water temperature sensor <Automatic A/C>	C-25 (6)	Instrument panel wiring harness and sunroof wiring harness combination <Vehicles with sunroof>
C-08 (22-GR)	J/C (3)	C-26 (22-B)	J/C (4)
C-09 (2)	Air thermo sensor <Automatic A/C>	C-27 (6-L)	Rheostat
C-10 (7)	Outside/Inside air selection damper control motor and potentiometer	C-28 (13)	J/C (5)
C-14 (2)	Blower motor <Heater and manual A/C>	C-30 (16-B)	A/C-ECU <Automatic A/C>
C-15 (6)	Blower motor <Automatic A/C>	C-31 (20-B)	A/C-ECU <Automatic A/C>
C-16 (4)	Resistor <Heater and manual A/C>		
C-18 (6)	Mode selection damper control motor and potentiometer <Automatic A/C>		



Connector colour code
 B: Black
 Y: Yellow
 L: Blue
 G: Green
 R: Red
 BR: Brown
 V: Violet
 O: Orange
 GR: Grey
 None: Milk white

- C-32 (12-B) A/C-ECU <Manual A/C> or heater control unit
- C-33 (5) Photo sensor <Automatic A/C>
- C-34 (2) Spare connector (for automatic lamp)
- C-35 (3) Instrument panel wiring harness and instrument panel wiring harness combination <Except vehicles for Hong Kong>
- C-36 (6-GR) No connection <Vehicles for Hong Kong>
- C-37 (2) Clutch switch <4G15-M/T>
- C-38 (2) Instrument panel wiring harness and clutch switch sub wiring harness combination <4G15-M/T>
- C-39 (6) Instrument panel wiring harness and roof wiring harness combination <Vehicles for Australia and New Zealand> or No connection <Vehicles for Hong Kong>
- C-40 (20-Y) SRS-ECU <Vehicles for Australia, Hong Kong and New Zealand>

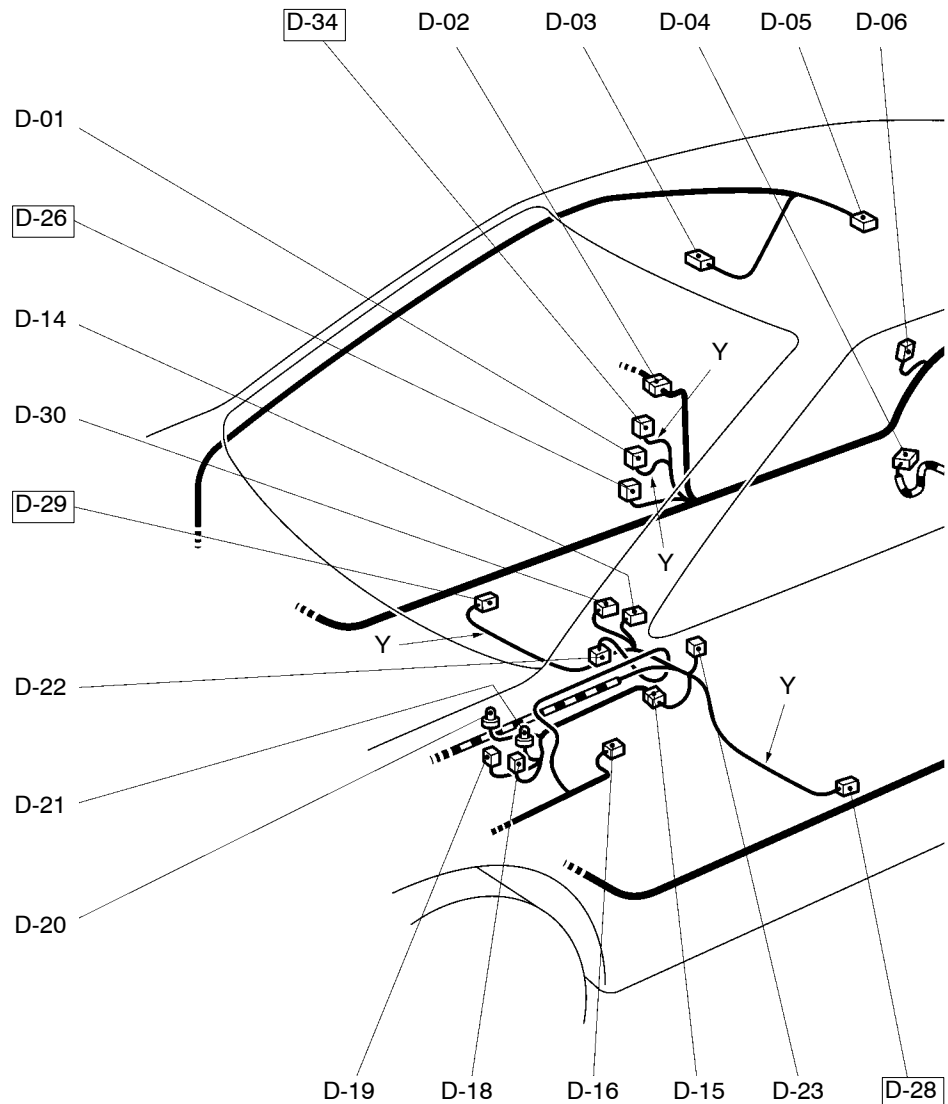
- C-41 (28-Y) SRS-ECU <Vehicles for Australia, Hong Kong and New Zealand>
- C-42 (20-Y) SRS-ECU <Vehicles for Australia, Hong Kong and New Zealand>
- C-43 (2) No connection <Vehicles for Hong Kong>
- C-44 (6) Instrument panel wiring harness and floor wiring harness combination <Vehicles for Australia and New Zealand> or No connection <Vehicles for Hong Kong>
- C-45 (2) No connection <Vehicles for Hong Kong>
- C-47 (2) Clutch switch <Vehicles with auto-cruise>
- C-48 (11-L) Instrument panel wiring harness and control wiring harness combination <Vehicles with auto-cruise>
- C-49 (16-B) Auto-cruise control-ECU

NOTE

Connector numbers in are connector numbers which have been changed.

FLOOR AND ROOF

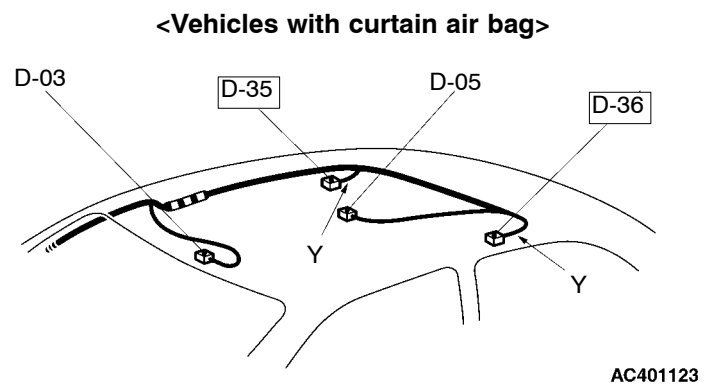
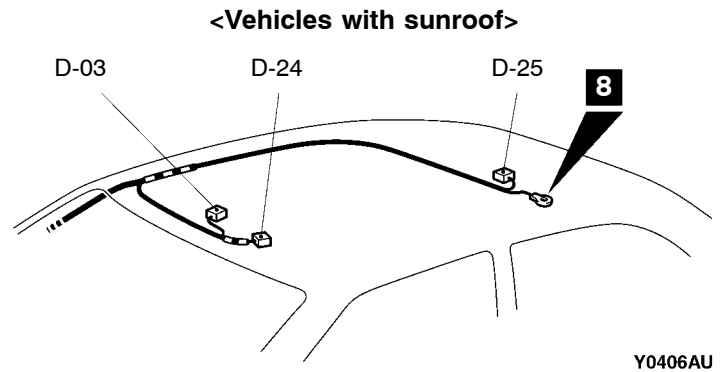
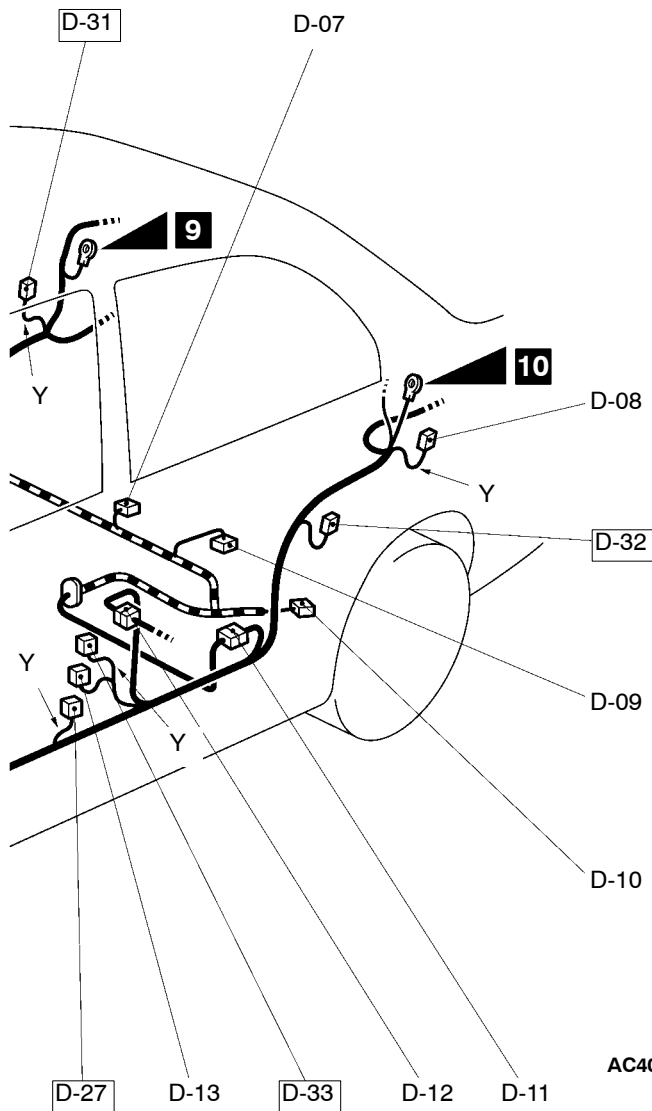
R.H. drive vehicles

Connector
symbol**D**

D-01 (3)	Door switch (Front: RH)
D-02 (8)	Floor wiring harness (RH) and rear door wiring harness (RH) combination
D-03 (2)	Room lamp <Vehicles with sunroof and vehicles for Hong Kong>
D-04 (2-B)	Wheel speed sensor (Rear: RH) <ABS>
D-05 (2-GR)	Room lamp <Vehicles without sunroof and vehicles for Hong Kong>
D-06 (3)	Door switch (Rear: RH)
D-07 (3-B)	Fuel gauge unit
D-08 (3)	Door switch (Rear: LH)
D-09 (5-GR)	Fuel pump
D-10 (2-B)	Wheel speed sensor (Rear: LH) <ABS>
D-11 (8)	Floor wiring harness (LH) and fuel wiring harness combination

D-12 (8)	Floor wiring harness (LH) and rear door wiring harness (LH) combination
D-13 (3)	Door switch (Front: LH)
D-14 (2)	Seat belt switch <Vehicles for Hong Kong and Singapore>
D-15 (4)	Instrument panel wiring harness and console wiring harness combination
D-16 (2)	A/T or CVT selector lever position illumination lamp
D-18 (1)	Cigarette lighter
D-19 (1-B)	Cigarette lighter
D-20 (2-B)	Ashtray illumination lamp
D-21 (2-B)	Cigarette lighter illumination lamp

Main
IndexGroup
Index



Connector colour code
 B: Black
 Y: Yellow
 L: Blue
 G: Green
 R: Red
 BR: Brown
 V: Violet
 O: Orange
 GR: Grey
 None: Milk white

- D-22 (4) Oxygen sensor (Rear)
<4G13 and 4G18 (Vehicles with catalytic converter and EGR system)>
- D-23 (1-B) Parking brake switch
- D-24 (6-B) Sunroof switch
- D-25 (10) Sunroof motor assembly
- D-26 (2-B) Seat belt pre-tensioner (RH)
<Vehicles for Australia, Hong Kong and New Zealand>
- D-27 (2-B) Seat belt pre-tensioner (LH)
<Vehicles for Australia, Hong Kong and New Zealand>
- D-28 (2-R) Side air bag module (Squib) (LH)
<Vehicles for Australia and New Zealand> or No connection
<Vehicles for Hong Kong>

- D-29 (2-R) Side air bag module (Squib) (RH)
<Vehicles for Australia and New Zealand> or No connection
<Vehicles for Hong Kong>
- D-30 (3) No connection
<Vehicles for Hong Kong>
- D-31 (2-Y) Side impact sensor (Rear: RH) <Vehicles for Australia and New Zealand>
- D-32 (2-Y) Side impact sensor (Rear: LH) <Vehicles for Australia and New Zealand>
- D-33 (2) Side impact sensor (Front: LH) <Vehicles for Australia and New Zealand>

NOTE

Connector numbers in are connector numbers which have been changed or added.