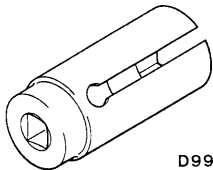


SERVICE SPECIFICATION

Item	Standard value	Limit
Manifold distortion of the installation surface mm	0.15 or less	0.20

SPECIAL TOOL

Tool	Number	Name	Use
 D998770	MD998770	Oxygen wrench sensor	Removal and installation of oxygen sensor

AIR CLEANER

REMOVAL AND INSTALLATION

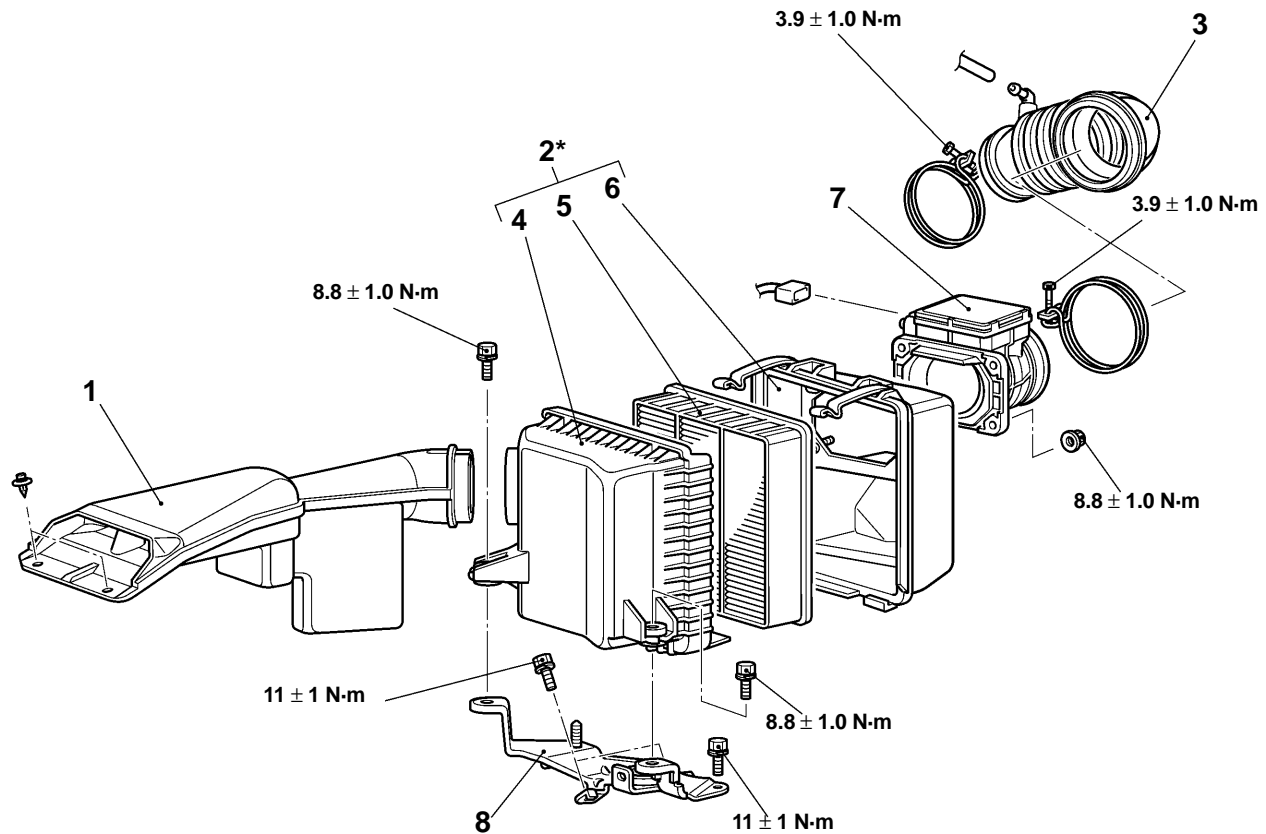
Caution

Parts marked by * are made of recycled-paper mixed plastic material, so observe the following precautions.

1. Avoid any shock or load to these parts when removing and installing them.
2. Engage the case hinges securely when assembling these parts.

NOTE

Parts marked by * are made of recycled-paper mixed plastic material, so can be disposed of by incineration.



AC100298AD

Removal steps

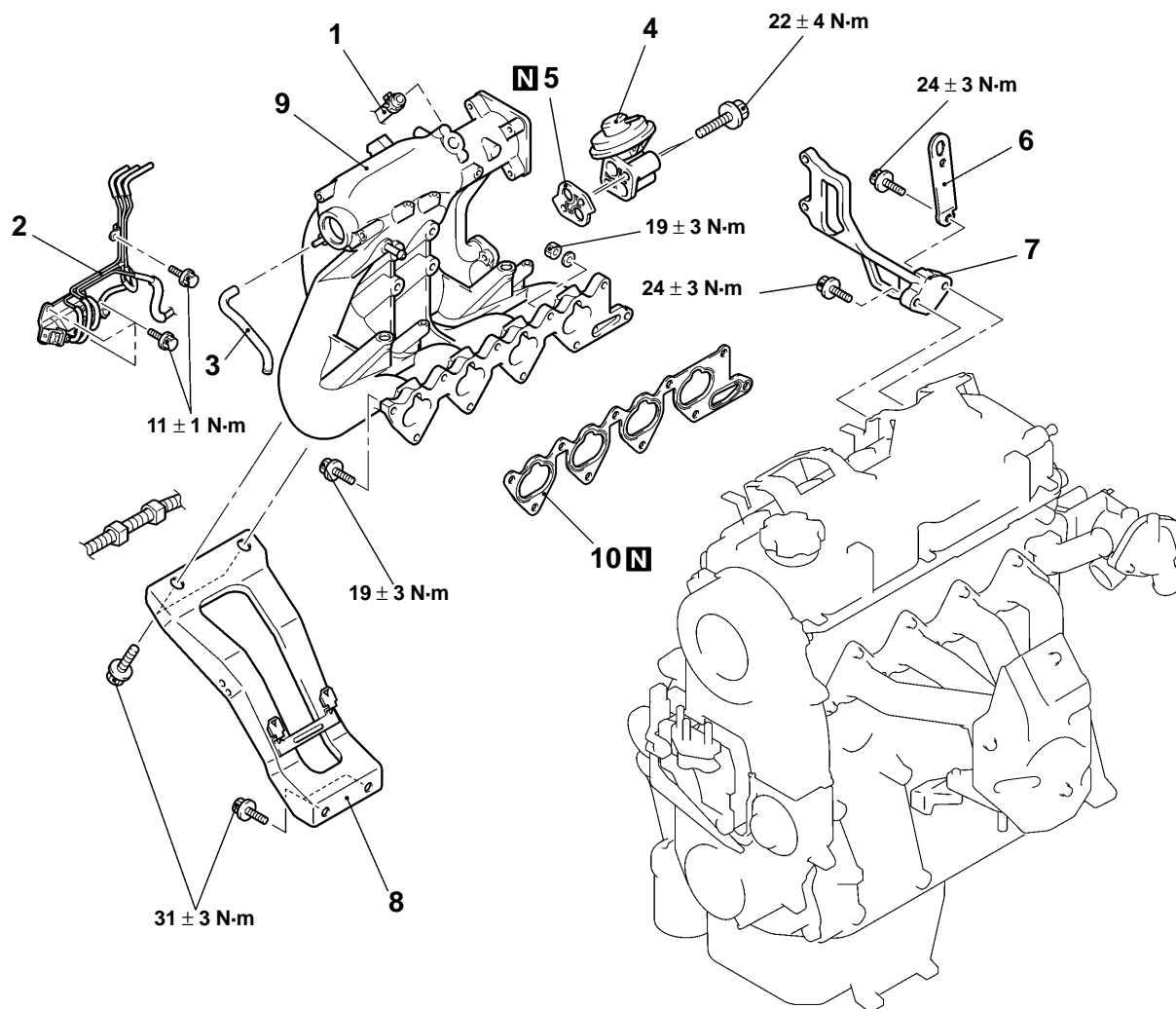
- | | |
|-------------------------|-----------------------------|
| 1. Air duct | 5. Air cleaner element |
| 2. Air cleaner assembly | 6. Air cleaner cover |
| 3. Air intake hose | 7. Air flow sensor assembly |
| 4. Air cleaner body | 8. Air cleaner bracket |

INTAKE MANIFOLD

REMOVAL AND INSTALLATION

Pre-removal and Post-installation Operation

- Prevention of Fuel Discharge <before removal only>
- Engine Coolant Draining and Supplying
- [Air Cleaner Removal and Installation](#)
- [Throttle Body Removal and Installation](#)
- Fuel Pressure Regulator, Delivery Pipe and Injector Assembly Removal and Installation (Refer to [Injector.](#))
- Fuel Leak Check <after installation only>
- Accelerator Cable Adjustment <after installation only>



AC202297AB

Removal steps

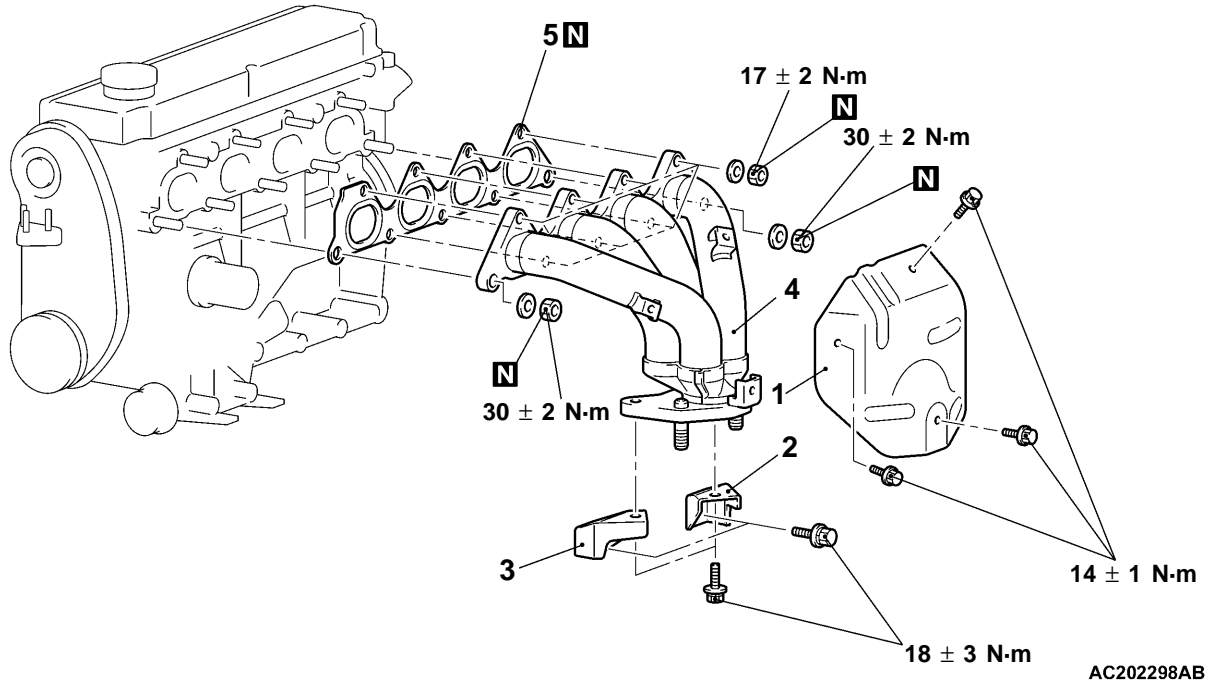
1. Brake booster vacuum hose connection
2. Vacuum hose and pipe assembly
3. Vacuum hose
4. EGR valve
5. EGR valve gasket
6. Engine hanger
7. Throttle body stay
8. Intake manifold stay
9. Intake manifold
10. Intake manifold gasket

EXHAUST MANIFOLD

REMOVAL AND INSTALLATION

Pre-removal and Post-installation Operation

- Front Exhaust Pipe Removal and Installation



Removal steps

1. Heat protector
2. Exhaust manifold bracket (A)
3. Exhaust manifold bracket (B)

4. Exhaust manifold
5. Exhaust manifold gasket

INSPECTION

Check the following points; replace the part if a problem is found.

EXHAUST MANIFOLD CHECK

1. Check for damage or cracking of any part.
2. Using a straight edge and a feeler gauge, check for distortion of the cylinder head installation surface.

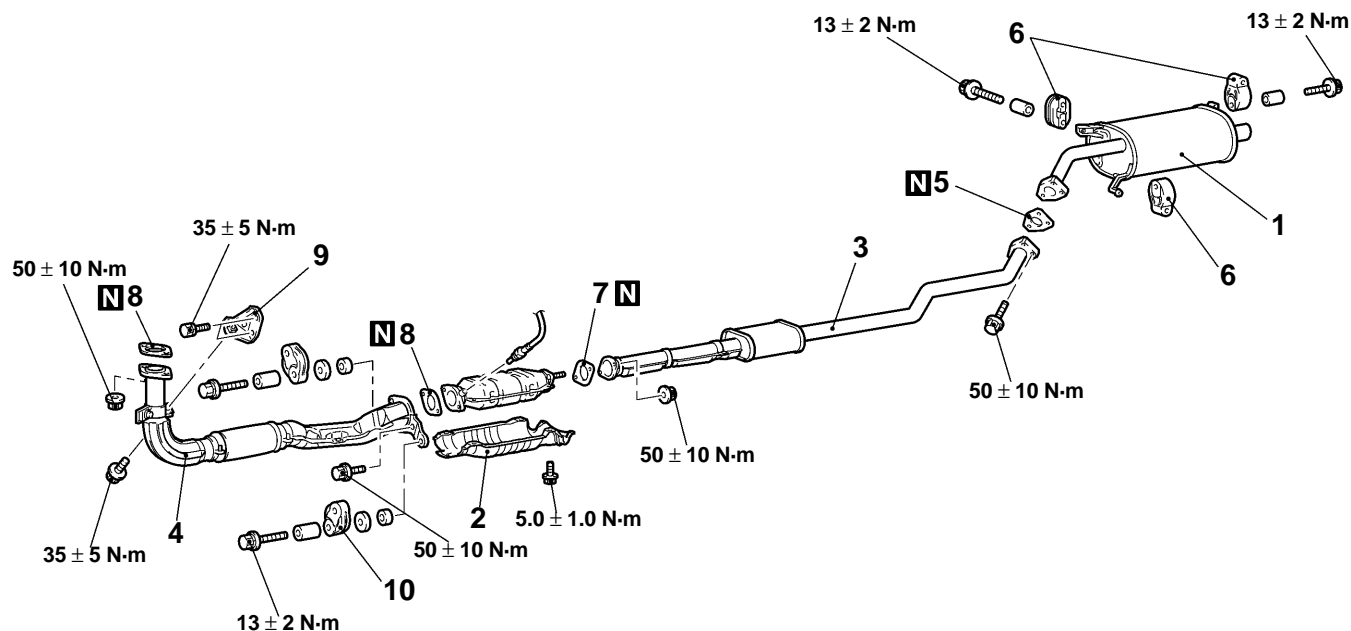
Standard value: 0.15 mm or less

Limit: 0.20 mm

EXHAUST PIPE AND MAIN MUFFLER

REMOVAL AND INSTALLATION

MAIN

Group
15


AC202299AB

Exhaust main muffler removal steps

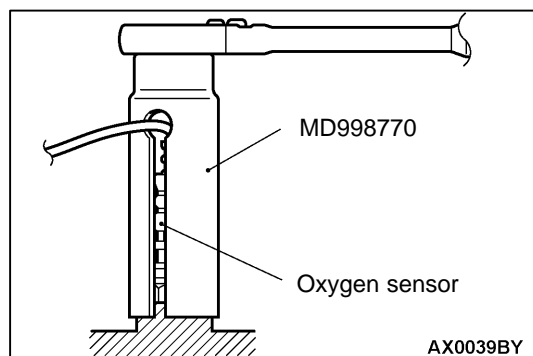
1. Exhaust main muffler
5. Exhaust pipe gasket
6. Hanger

Center exhaust pipe removal steps

2. Heat protector
3. Center exhaust pipe
5. Exhaust pipe gasket
7. Exhaust pipe gasket

Front exhaust pipe removal steps

- Front under cover
- 4. Front exhaust pipe
- 8. Exhaust pipe gasket
- 9. Front pipe bracket
- 10. Hanger



REMOVAL SERVICE POINT

◀A▶ OXYGEN SENSOR REMOVAL

Use special tool to remove the oxygen sensor.

INSTALLATION SERVICE POINT

▶A◀ OXYGEN SENSOR INSTALLATION

Use special tool to install the oxygen sensor.

AX0039BY