

# GENERAL

## OUTLINE OF CHANGES

Due to the changes on the transmitter, service procedures have been established. The other service procedures are the same as before.

## KEYLESS ENTRY SYSTEM

### SERVICE SPECIFICATIONS

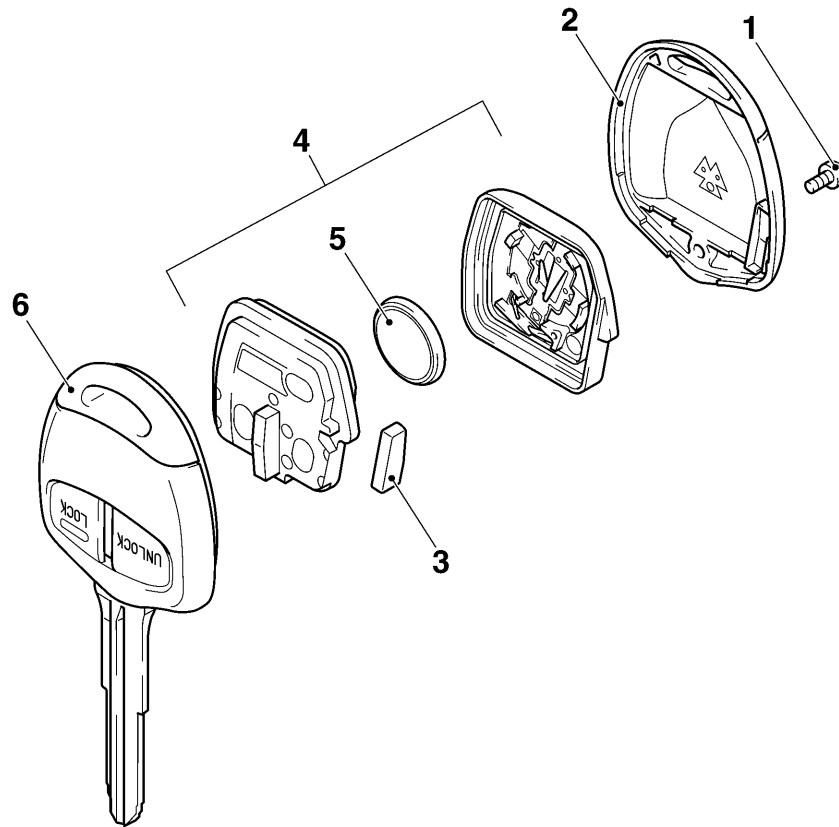
Item	Standard value
Voltage of transmitter battery V	2.5 – 3.2

# KEYLESS ENTRY SYSTEM

## TRANSMITTER

### DISASSEMBLY AND REASSEMBLY

**Post-reassembly Operation**  
Transmitter Operation Check.



AC310838 AF

#### Disassembly steps

1. Screw
2. Upper cover
3. Transponder



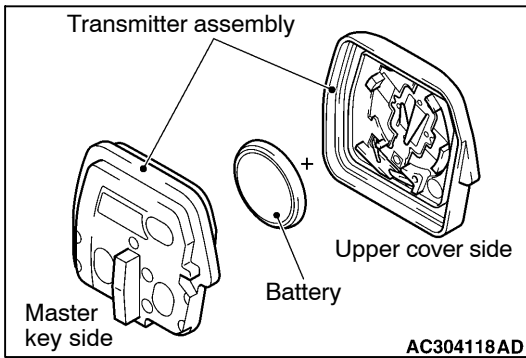
4. Transmitter assembly
5. Battery
6. Master key

### DISASSEMBLY SERVICE POINT

#### ◀A▶ BATTERY REMOVAL

#### Caution

Do not allow water or dust to enter the inside of the transmitter assembly when it is open. Also, do not touch the precision electronic device.



## REASSEMBLY SERVICE POINT

### ►A◄ BATTERY INSTALLATION

Install a new battery to the transmitter assembly with its (+) side facing towards the upper cover side.

#### Caution

**Do not allow water or dust to enter the inside of the transmitter assembly when it is open. Also, do not touch the precision electronic device.**

**Battery required for replacement: Coin type battery CR1616**

## INSPECTION

### TRANSMITTER BATTERY CHECK

Measure the voltage of the battery. If the voltage of the battery is not within the standard value, replace the battery.

**Standard value: 2.5 – 3.2 V**

