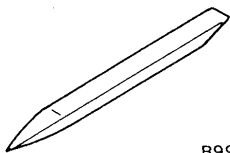


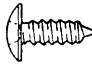
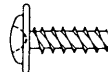
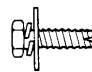

SPECIAL TOOL

Tool	Number	Name	Application
 B990784	MB990784	Ornament remover	Removal of switches and trims

INSTRUMENT PANEL

REMOVAL AND INSTALLATION

The following bolts and screws are used for installing the instrument panel.
Bolts and screws are indicated as marks shown in the illustration in the sections of "Removal and Installation" and "Disassembly and Assembly."

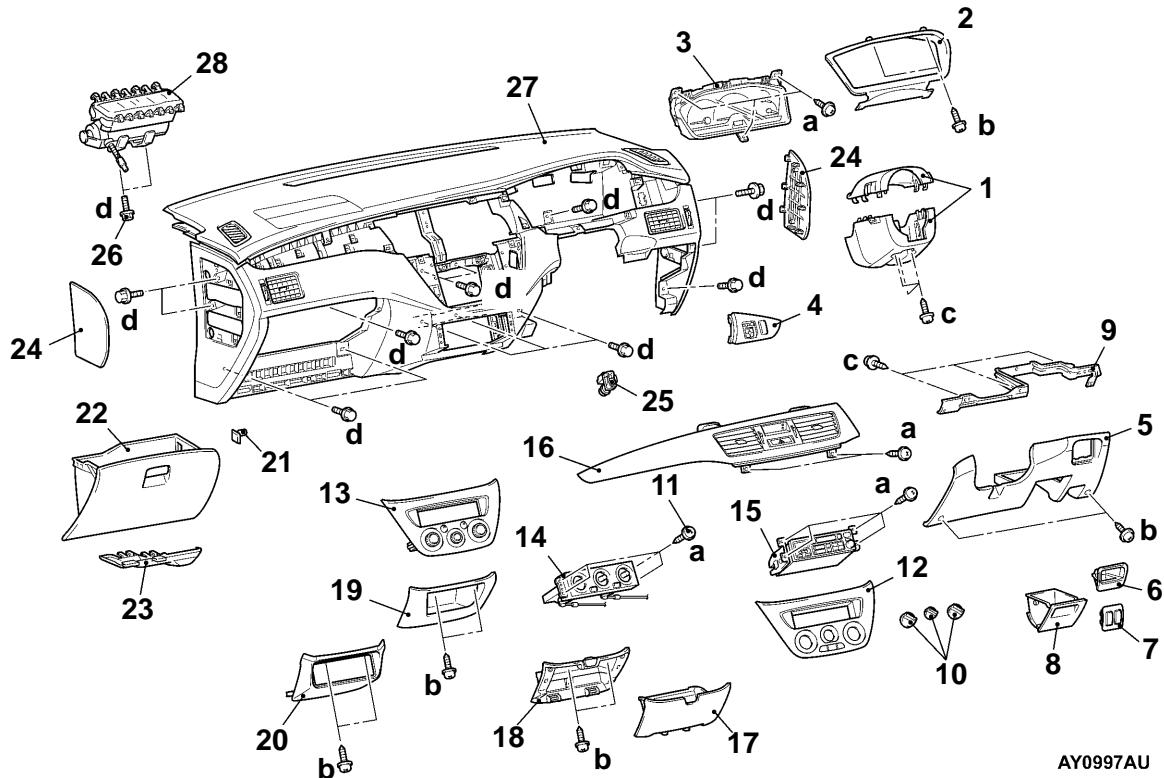
Name	Mark	Dimensions mm (screw diameter x screw length)	Color	Shape
Tapping screw	a	5 × 16	Black	 19Z0004
	b	5 × 16	—	
	c	5 × 12	—	 19Z0022
Bolt with washer	d	6 × 12	—	 19Z0005
	e	5 × 20	—	 19Z0020

Caution: SRS

1. Refer to [SRS Service Precautions](#) and [Air Bag Module and Clock Spring](#) before removing the passenger side air bag module.
2. Do not subject the SRS-ECU to any shocks when removing or installing the instrument panel.

Pre-removal and Post-installation Operation

- Removal and Installation of Front Pillar Trim
- Fuel Opener Lever



AY0997AU

Removal steps

1. Column cover
2. Meter bezel
3. Combination meter
4. Instrument panel ornament
5. Under cover
6. Box <Vehicle with box>
7. Switch panel
<Vehicle with switch panel>
8. Side box
9. Lower frame
10. Heater control knob
11. Heater control assembly mounting screw
12. Center panel
13. Center panel assembly
<Vehicle with automatic A/C>
14. Heater control panel assembly
15. Radio and tape player
16. Center air outlet panel
17. Center lower box A
<Vehicle for Hong Kong>
18. Center lower case A
<Vehicle for Hong Kong>
19. Center lower box B
20. Center lower case B
(Vehicle with CD automatic changer)
21. Stopper
22. Glove box
23. Harness cover
24. Instrument panel side cover
25. Room temperature sensor
26. SRS front passenger's air bag module mounting bolt
 - Steering column shaft mounting bolt (Refer to [Steering Wheel and Shaft](#).)
27. Instrument panel assembly
28. SRS front passenger's air bag module

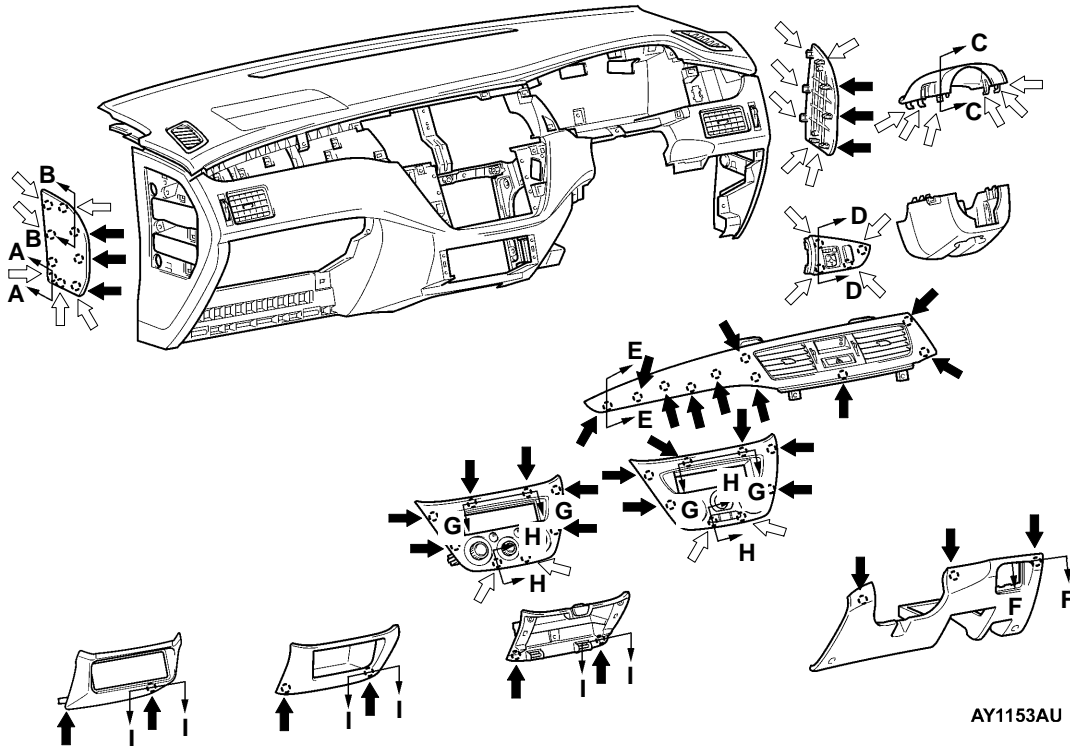


CLIP AND CLAW POSITIONS

MAIN

Group
52

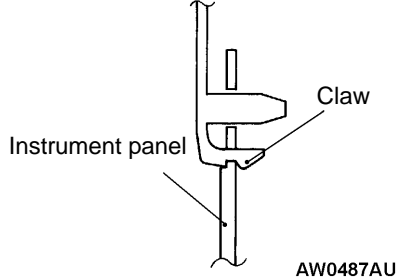
52A



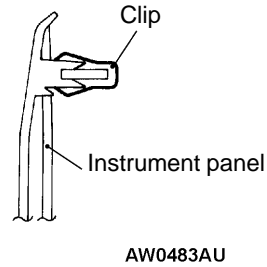
NOTE

- (1) : Clip location
(2) : Claw location

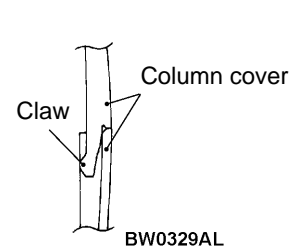
Section A - A



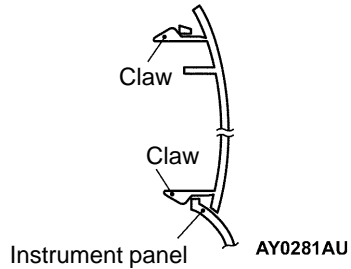
Section B - B



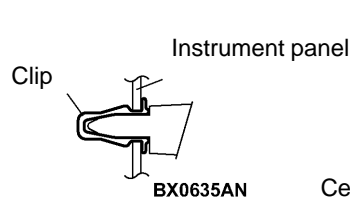
Section C - C



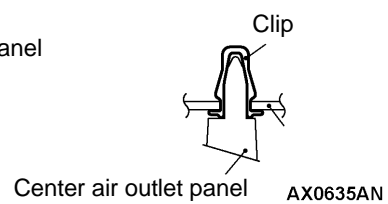
Section D - D



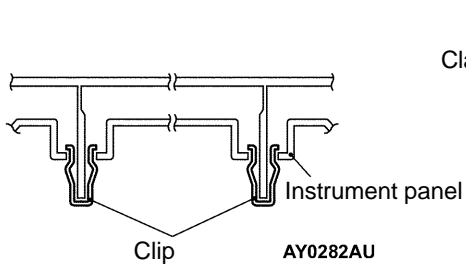
Section E - E



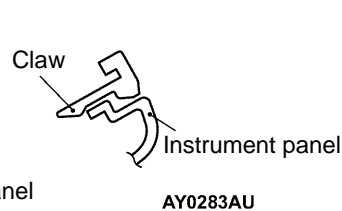
Section F - F



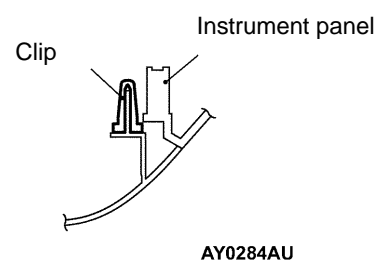
Section G - G

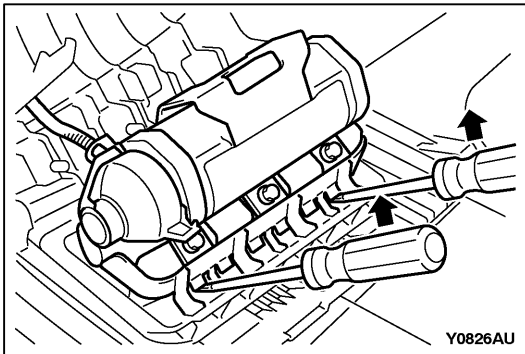


Section H - H



Section I - I





REMOVAL SERVICE POINT

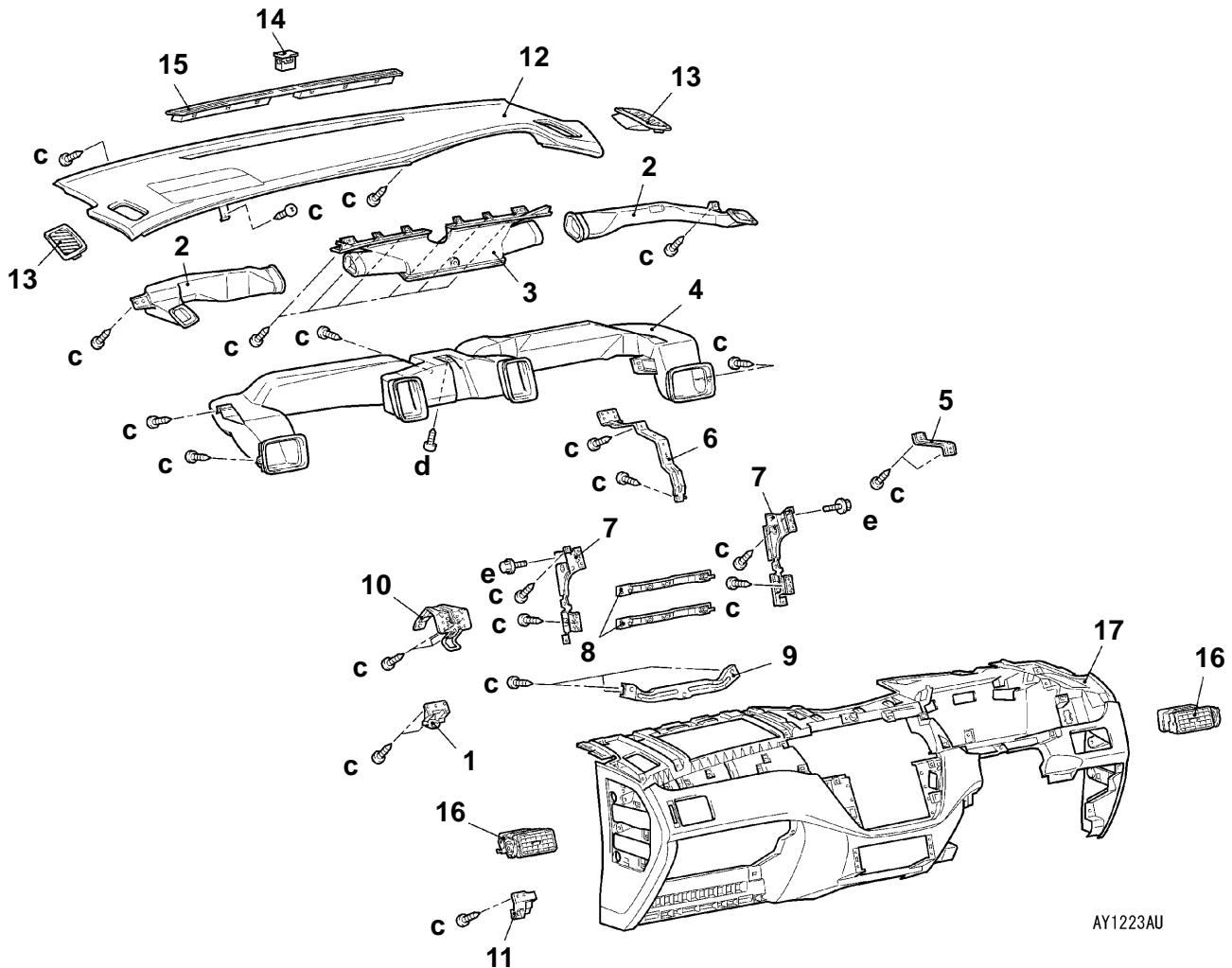
◀A▶ PASSENGER'S AIR BAG MODULE REMOVAL

Insert the flat tipped screw driver into the position shown in the illustration and pull up the screw driver to disengage the claws for removal of the front passenger's airbag module.

Caution

1. Do not damage the claws of the hinge when removing the front passenger's air bag module.
2. Store the removed front passenger's air bag module facing the deployed side upward in a clean and dry place.

DISASSEMBLY AND REASSEMBLY



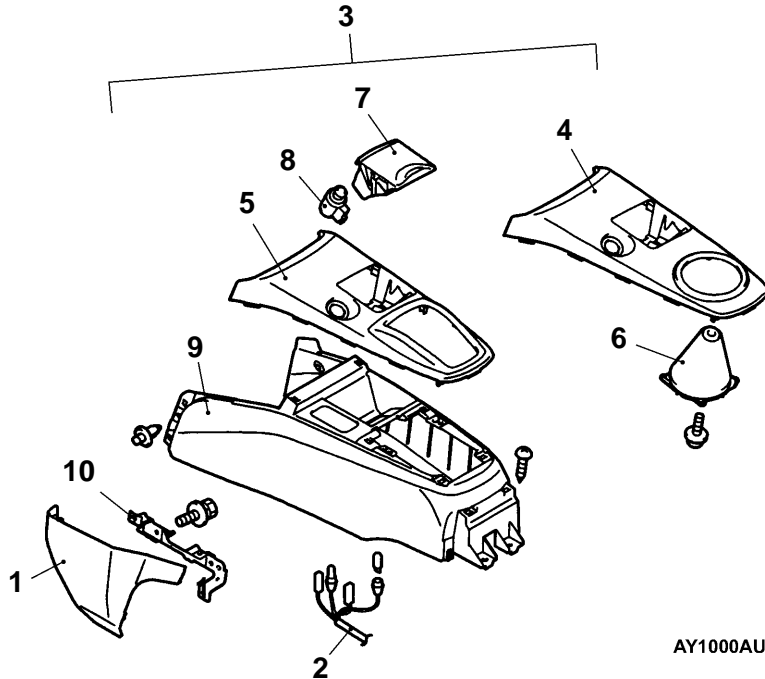
Disassembly steps

1. Instrument panel upper support
2. Side defroster duct
3. Center defroster duct
4. Distribution duct
5. Driver side upper bracket
6. Center upper reinforcement
7. Instrument panel center reinforcement
8. Bridge reinforcement
9. Center lower reinforcement
10. Glove box striker
11. Glove box cover
12. Instrument panel pad
13. Side demister
14. Photo sensor
15. Defroster garnish
16. Side air outlet assembly
17. Instrument panel

FRONT FLOOR CONSOLE

REMOVAL AND INSTALLATION

Pre-removal and Post-installation Operation
Removal and Installation of Rear Floor Console



AY1000AU

Removal steps

1. Console side cover
2. Harness
3. Front floor console assembly
4. Front floor console panel
(Vehicle with M/T)
5. Front floor console panel
(Vehicle with A/T)
6. M/T shift lever cover
7. Cigarette lighter
8. Ashtray
9. Front floor console
10. Console side cover bracket

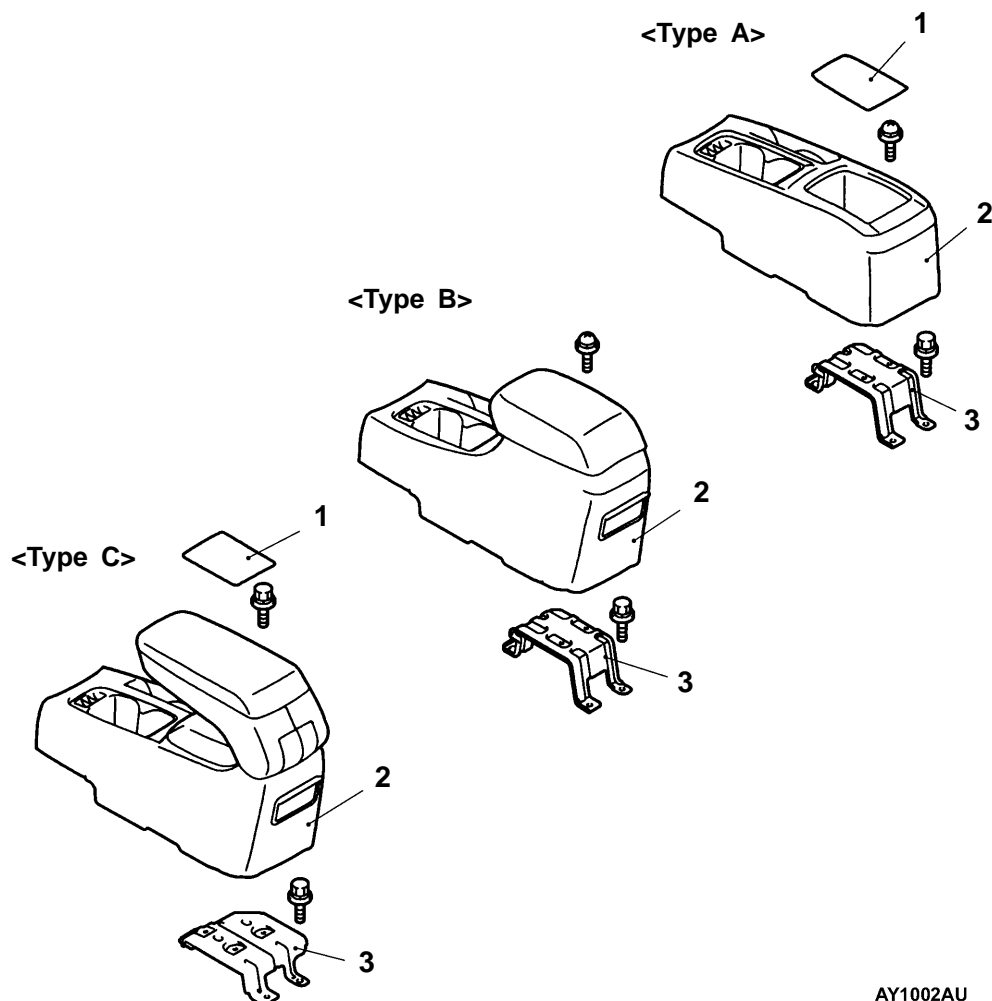
REAR FLOOR CONSOLE

REMOVAL AND INSTALLATION

MAIN

Group
52

52A



AY1002AU

Removal steps

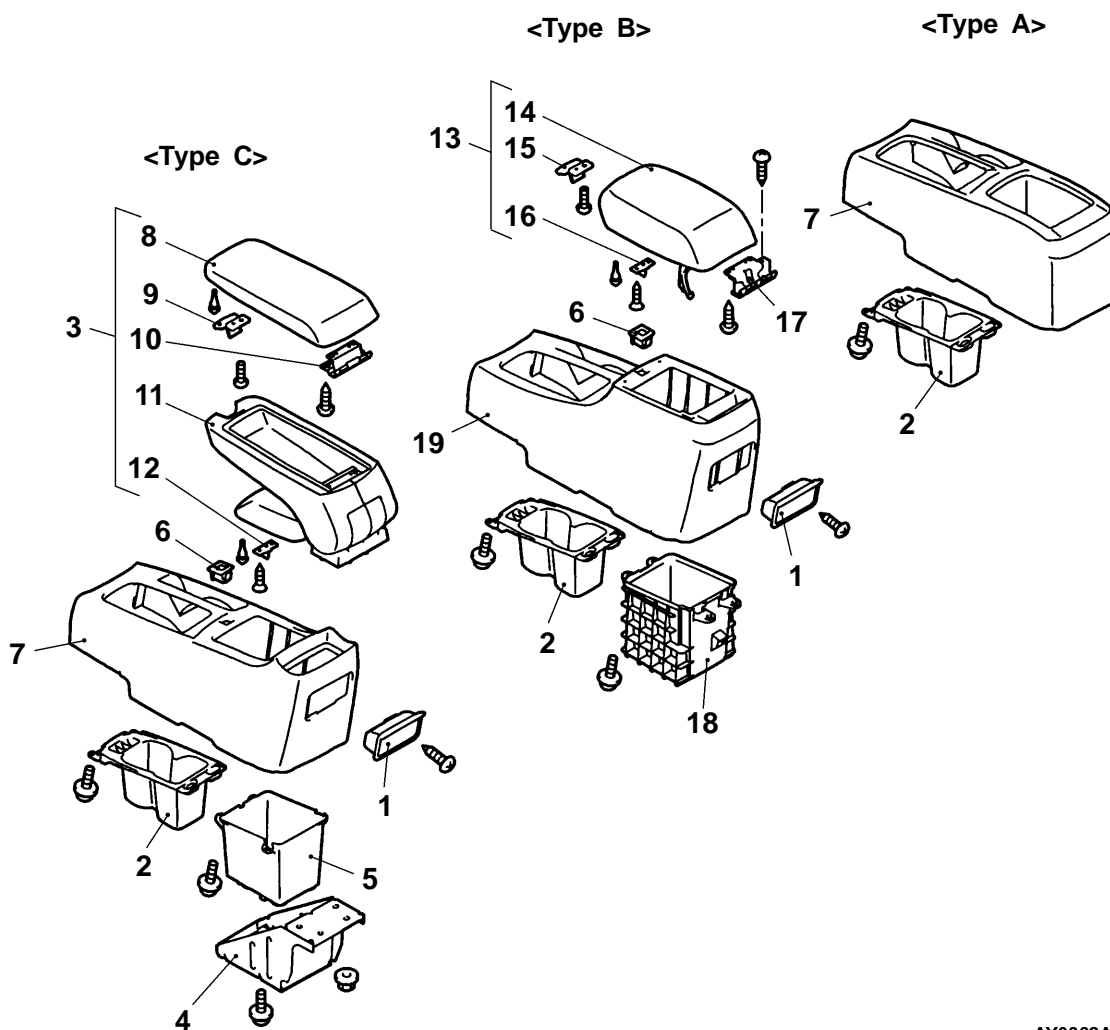
1. Console box mat
 2. Rear console assembly
- [Rear seat cushion assembly](#)
 - [Front scuff plate](#)
 - [Rear scuff plate](#)
 - [Lower center pillar trim](#)
 - Floor carpet
3. Rear console bracket

DISASSEMBLY AND REASSEMBLY

MAIN

Group
52

52A



AY0362AU

Disassembly steps

1. Ashtray
2. Cup holder
3. Console armrest assembly
4. Armrest support bracket
5. Box
6. Hole lock
7. Rear floor console
8. Upper lid
9. Upper lid lock
10. Hinge bracket

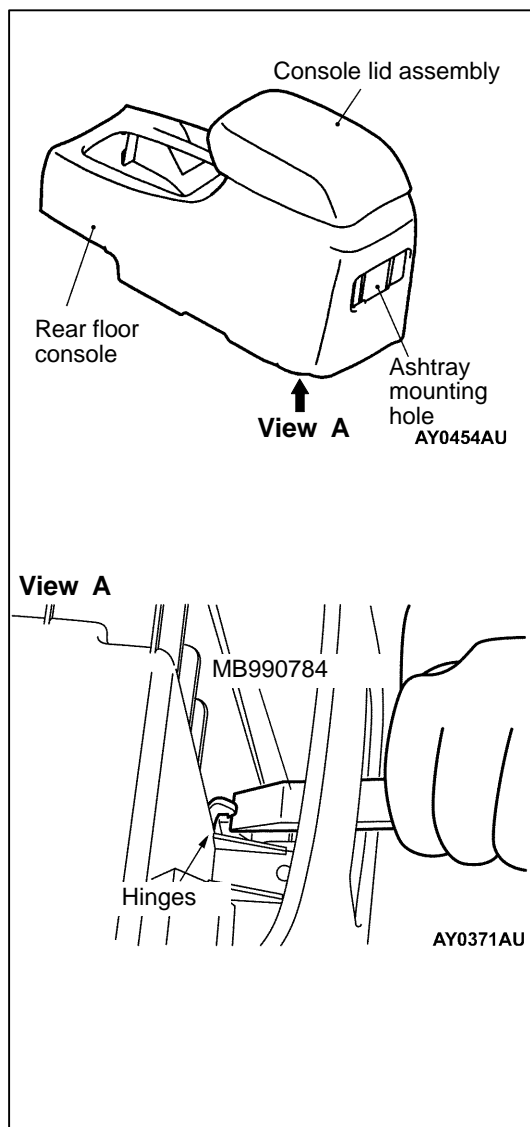


11. Armrest box
12. Lower lid striker
13. Console lid assembly
14. Console lid
15. Upper lid lock
16. Lower lid striker
17. Hinge bracket
18. Box
19. Rear floor console

DISASSEMBLY SERVICE POINT

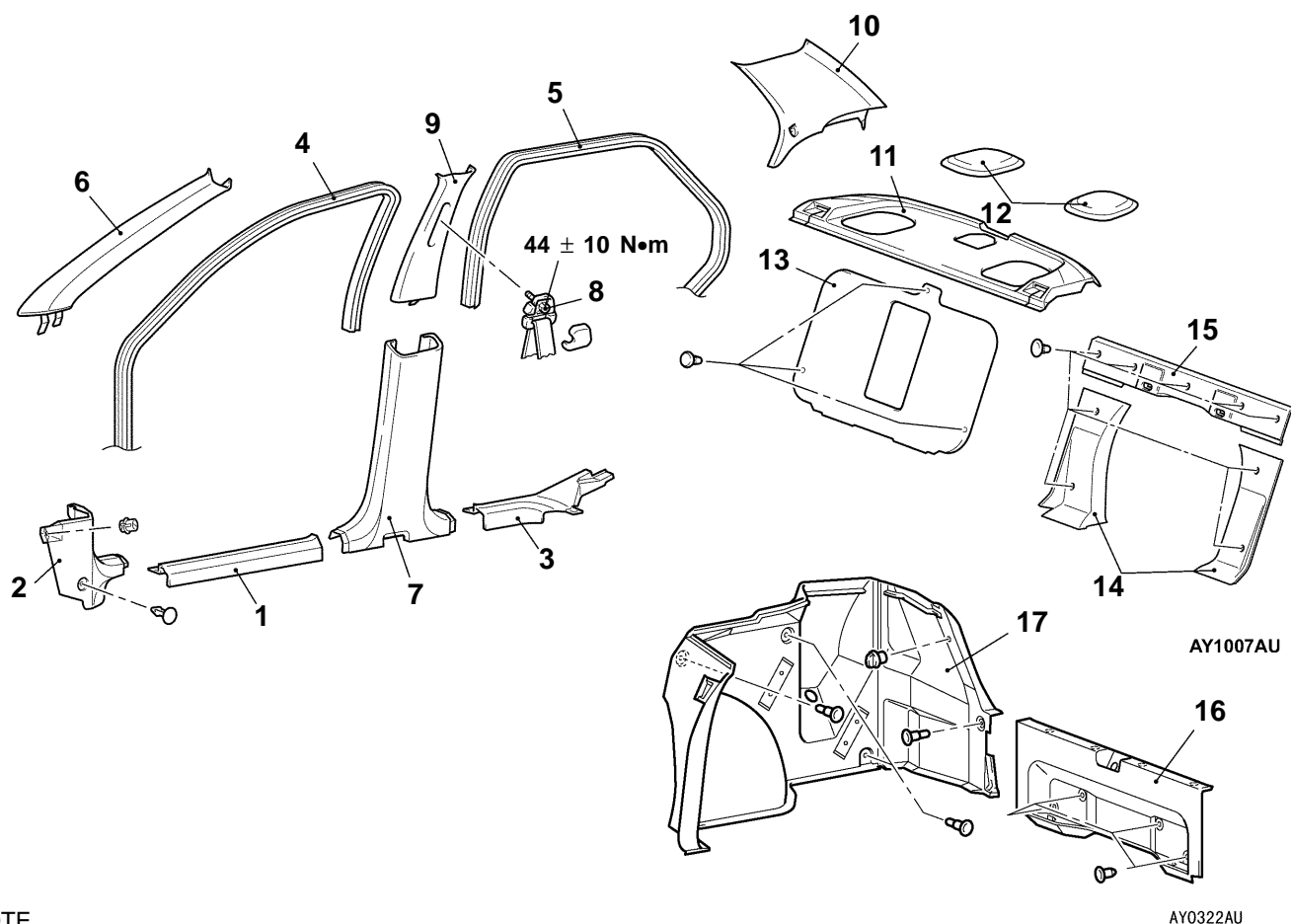
◀A▶ REMOVAL OF CONSOLE LID ASSEMBLY

Insert the special tool into the hinges of the console lid assembly and the rear floor console through the ashtray mounting hole to pry for removal.



TRIMS

REMOVAL AND INSTALLATION



NOTE

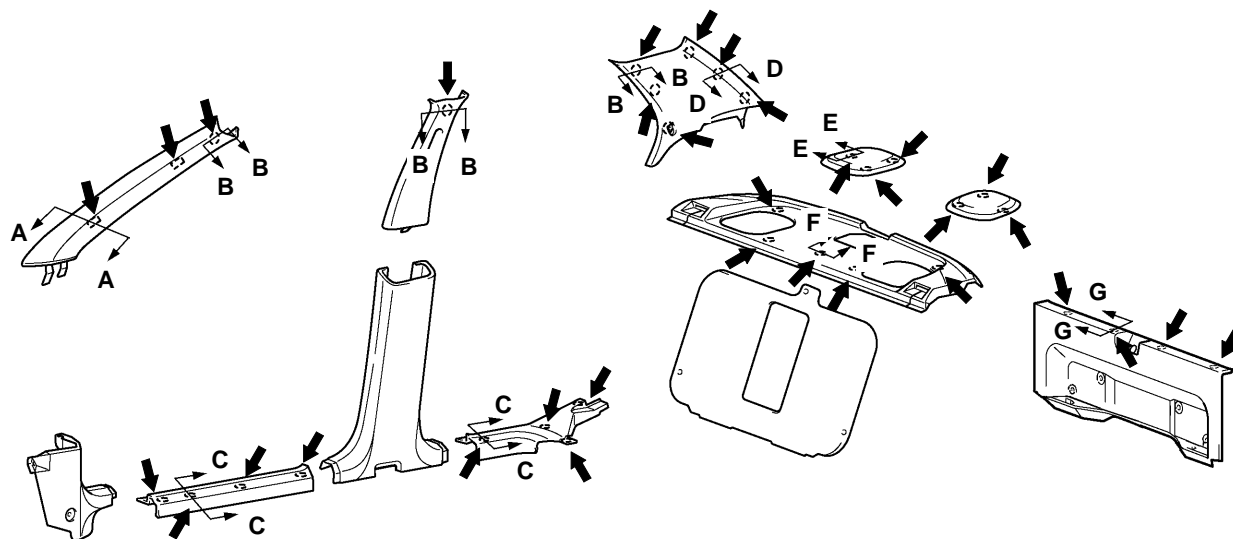
For more information refer to [door trim](#).

Removal steps

1. Front scuff plate
2. Cowl side trim
3. Rear scuff plate
4. Front door opening trim
5. Rear door opening trim
6. Front pillar trim
7. Center pillar trim, lower
8. Front seat belt connection
9. Center pillar trim, upper

10. Rear pillar trim
11. Rear shelf trim
12. Speaker garnish
13. Partition board
14. Rear seatback brace trim
15. Rear seatback trim
16. Rear end trim
17. Trunk side trim

CLIP POSITION

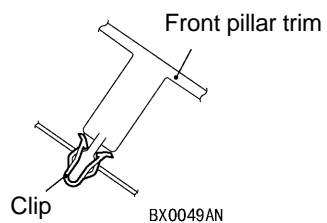


AY0319AU

NOTE

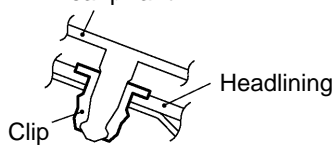
←: Clip position

Section A - A



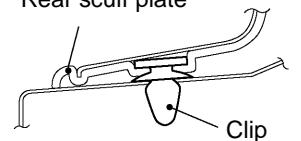
Section B - B

Front pillar trim,
Center pillar trim,
upper,
Rear pillar trim

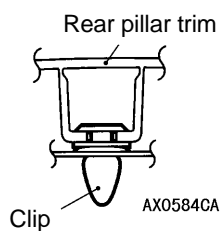


Section C - C

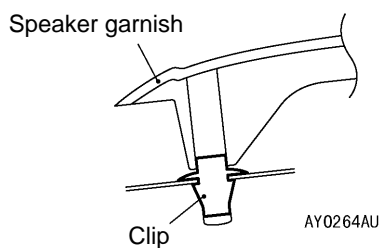
Front scuff plate,
Rear scuff plate



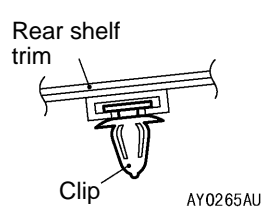
Section D - D



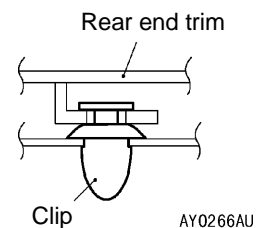
Section E - E

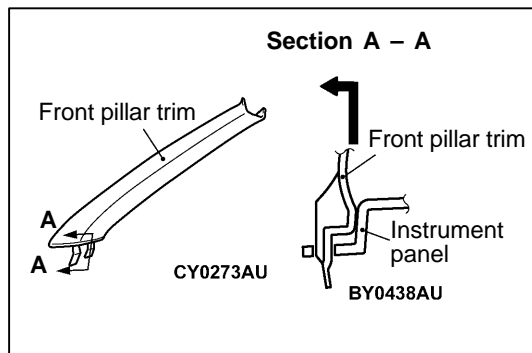


Section F - F

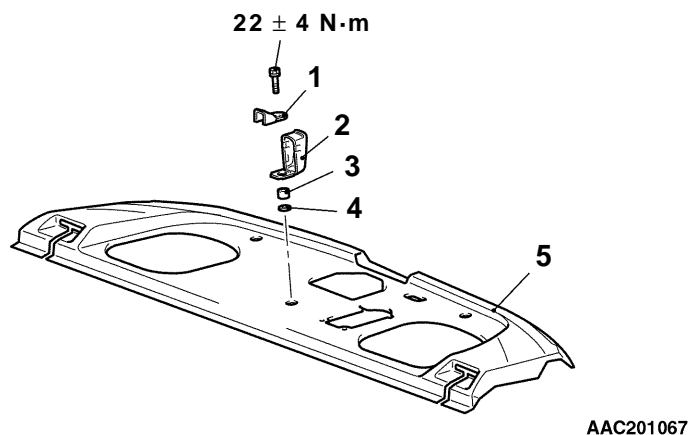


Section G - G



**REMOVAL SERVICE POINT****◀A▶ FRONT PILLAR TRIM REMOVAL**

Release the clip to pull towards the direction shown in the illustration and remove the front pillar trim.

◀B▶ REAR PARCEL SHELF TRIM**Removal steps**

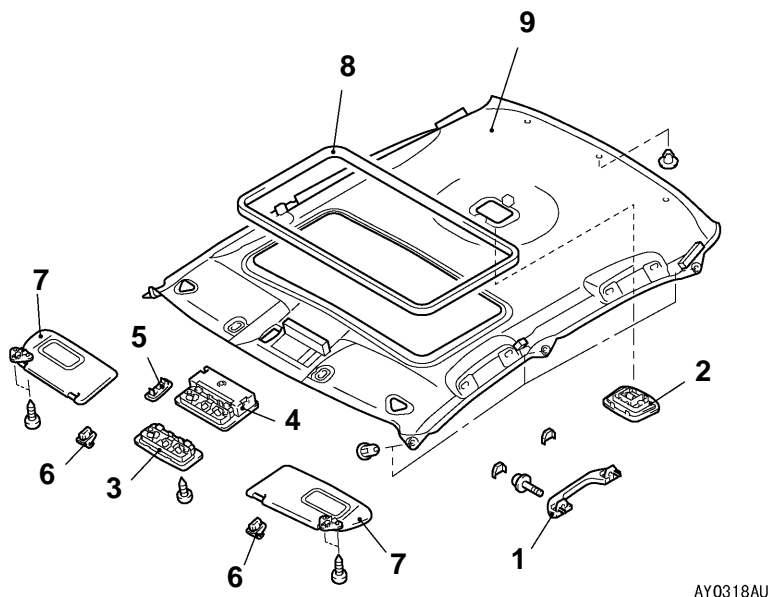
1. Child restraint fitting
2. Cover
3. Spacer (10 mm)

4. Fiber washer
5. Rear shelf trim

HEADLINING

REMOVAL AND INSTALLATION

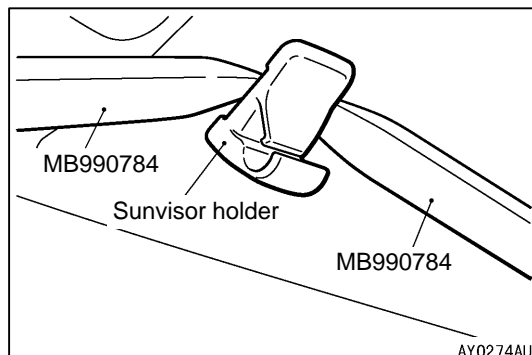
Pre-removal and Post-installation Operation
Removal and Installation of Front Pillar Trim, Upper
Center Pillar Trim, Rear Pillar Trim



AY0318AU

Removal steps

- | | | |
|--|-----|--|
| 1. Assist grip | | 5. Sun roof switch cover |
| 2. Room lamp assembly | | <Vehicle with sunroof> |
| <Vehicle without sunroof> | ◀A▶ | 6. Sunvisor holder |
| 3. Front room lamp also serving as a | | 7. Sunvisor assembly |
| map lamp<Except vehicle for Hong | | 8. Headlining trim<Vehicle with sunroof> |
| Kong> | | ● Front floor console assembly |
| 4. Front room lamp also serving as a | ◀B▶ | 9. Headlining |
| map lamp (with sunglasses pocket)<Vehicle for Hong Kong> | | |



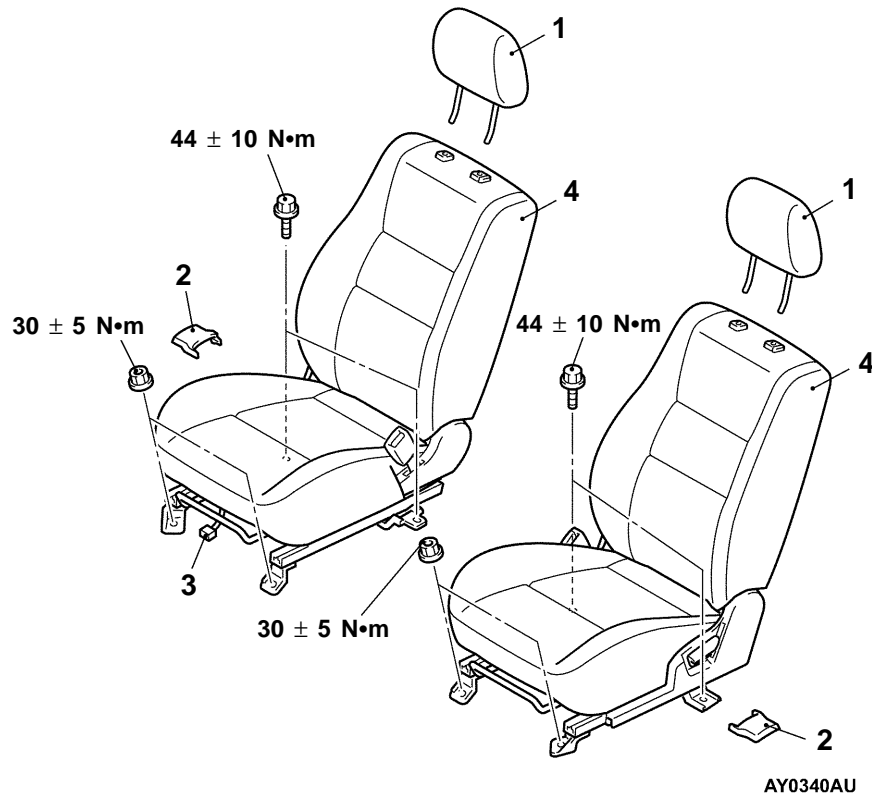
REMOVAL SERVICE POINTS

◀A▶ SUNVISOR HOLDER REMOVAL

Insert the special tool into sides claws of the sunvisor holder through the both sides of the sunvisor holder to remove the hinges.

◀B▶ HEADLINING REMOVAL

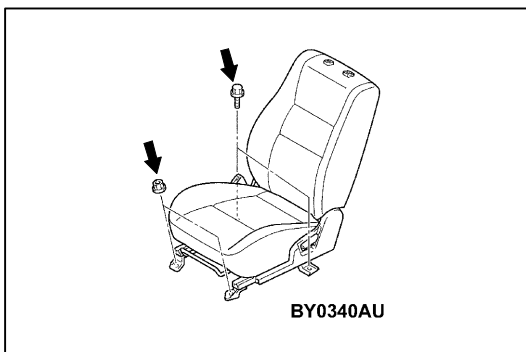
Bend the headlining to remove from the front passenger's door.

SEAT**FRONT SEAT****REMOVAL AND INSTALLATION**

1. Headrest

Front seat assembly removal steps

2. Front seat anchor cover
3. Harness connector
4. Front seat assembly

**INSTALLATION SERVICE POINT****►A◄ INSTALLATION OF FRONT SEAT ASSEMBLY**

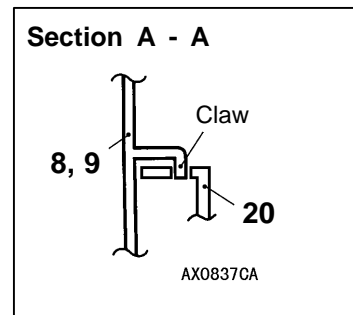
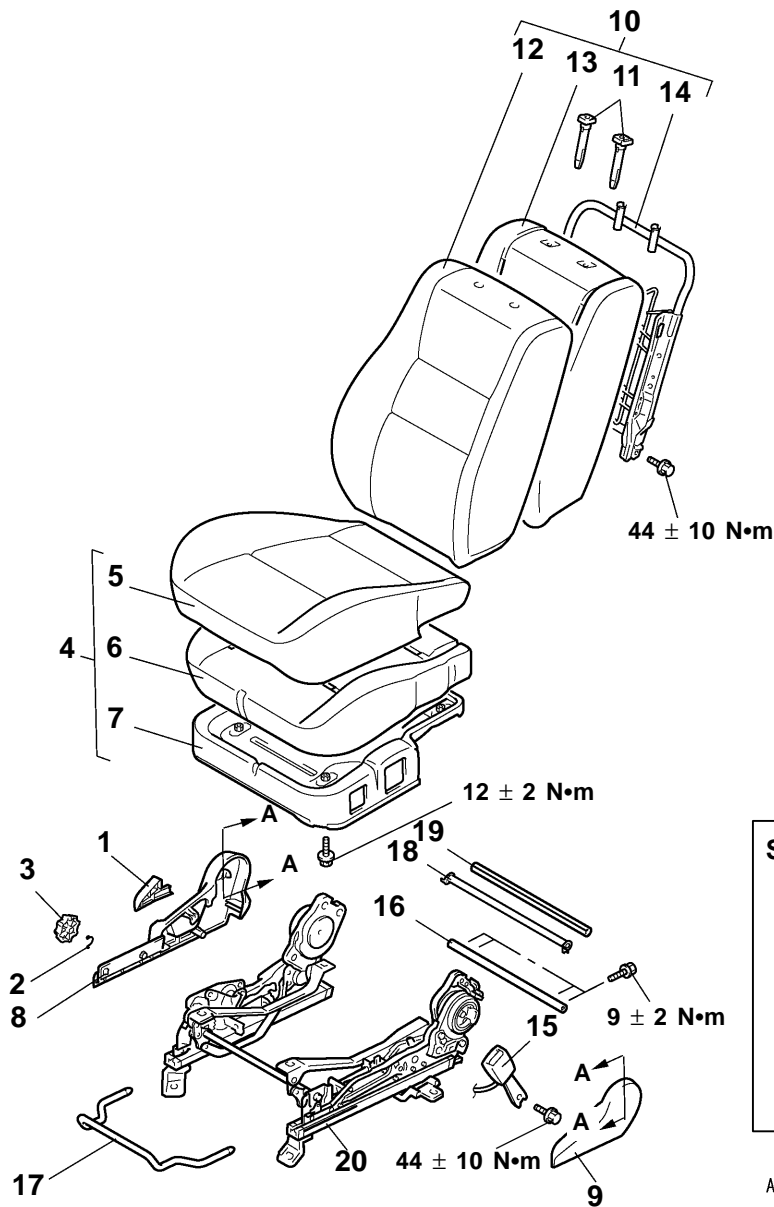
- (1) Temporarily tighten the nuts and bolts in all mounting locations shown in the illustration with no load applied to the front seat cushion and check the operation of the seat slide.
- (2) Tighten the nuts and bolts in all mounting locations to the specified torque.

DISASSEMBLY AND REASSEMBLY

MAIN

Group
52

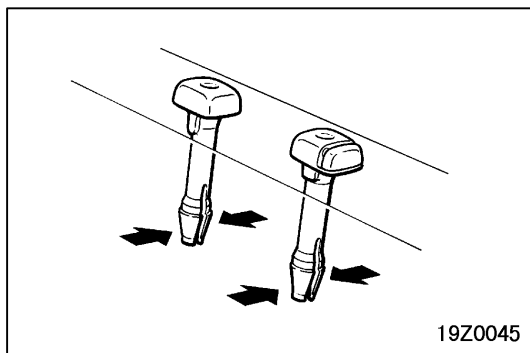
52A



AY0341AU

Disassembly steps

- | | | |
|--------------------------------|--|--------------------------|
| 1. Reclining knob | | 11. Headrest guide |
| 2. Pin | | 12. Front seatback cover |
| 3. Height adjuster knob | | 13. Front seatback pad |
| 4. Front seat cushion assembly | | 14. Front seatback frame |
| 5. Front seat cushion cover | | 15. Inner seat belt |
| 6. Front seat cushion pad | | 16. Shaft |
| 7. Front seat cushion frame | | 17. Seat slide handle |
| 8. Reclining cover | | 18. Shaft |
| 9. Shield cover | | 19. Shaft protector |
| 10. Front seatback assembly | | 20. Seat slide adjuster |

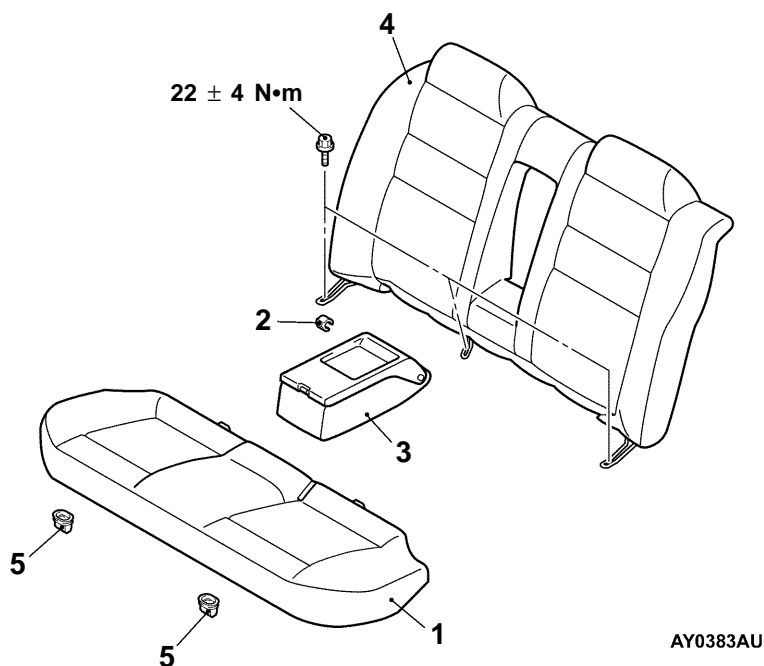


REMOVAL SERVICE POINT

◀A▶ REMOVAL OF HEADREST GUIDE

REAR SEAT REMOVAL AND INSTALLATION

<Type A>

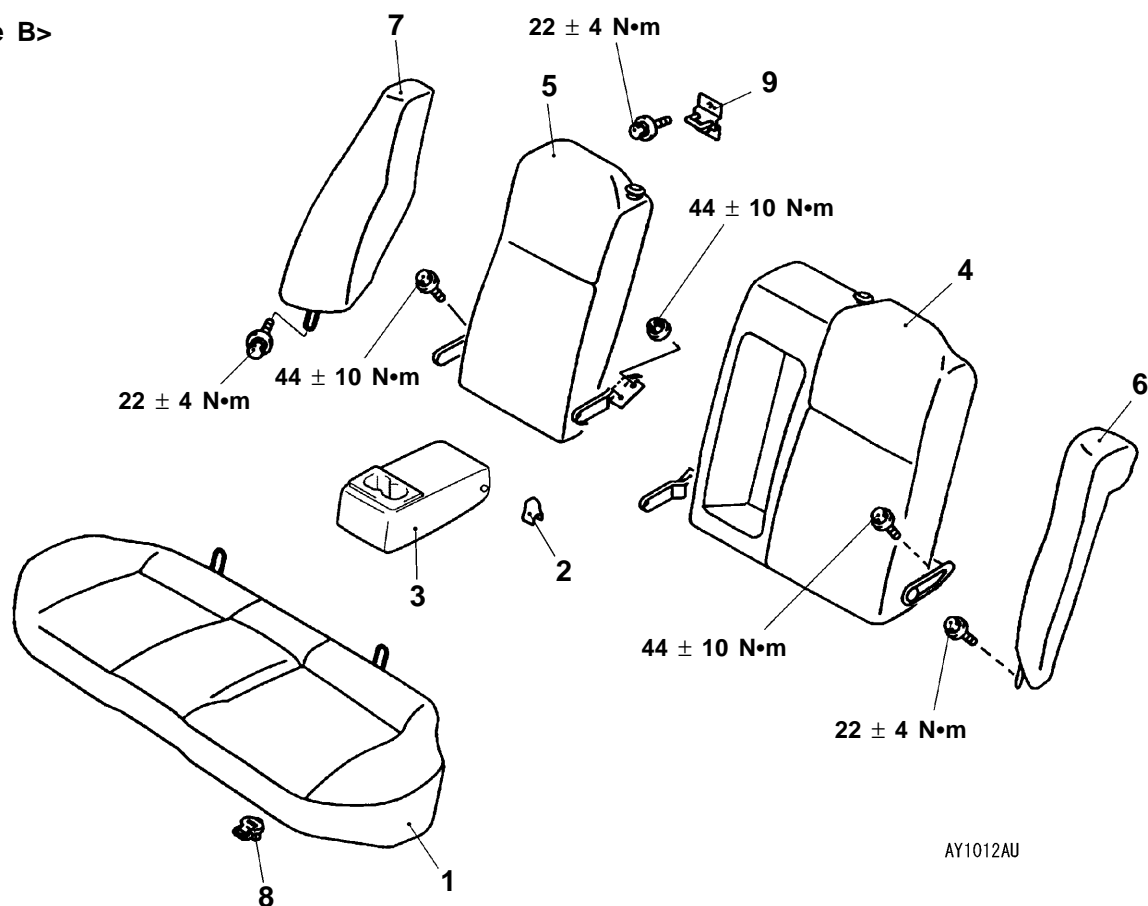


Disassembly steps

- ▶C▶
1. Rear seat cushion assembly
 2. Armrest spacer
 3. Rear seat armrest

- ▶A▶
4. Rear seatback assembly
 5. Rear seat hook

<Type B>

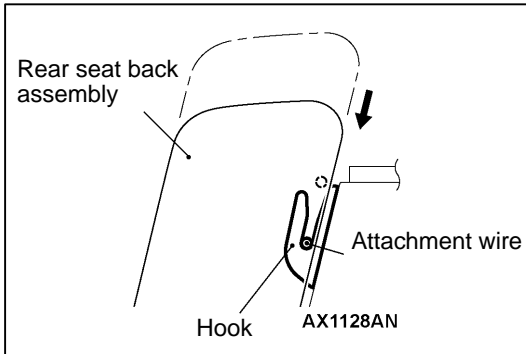


AY1012AU

Removal steps

- ▶C◀ 1. Rear seat cushion assembly
- 2. Armrest spacer
- 3. Rear seat armrest
- ▶B◀ 4. Rear seatback assembly L.H.
- ▶B◀ 5. Rear seatback assembly R.H.

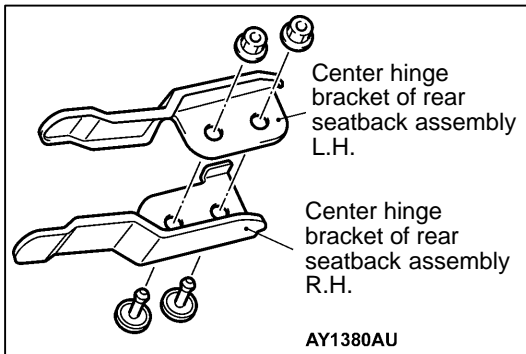
- ▶A◀ 6. Rear seatback side assembly L.H.
- ▶A◀ 7. Rear seatback side assembly R.H.
- 8. Rear seat hook
- 9. Striker



INSTALLATION SERVICE POINTS

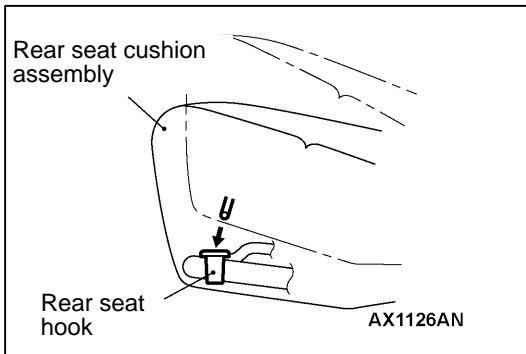
►A◄ INSTALLATION OF REAR SEATBACK ASSEMBLY/REAR SEATBACK SIDE ASSEMBLY L.H., R.H.

Press the rear seatback assembly in the direction shown in the illustration and fit the attachment wire into the hook securely to install the rear seatback assembly.



►B◄ INSTALLATION OF REAR SEATBACK ASSEMBLY L.H./REAR SEATBACK ASSEMBLY R.H.

Place the center hinge bracket of the rear seatback assembly L.H. on top of the center hinge bracket of the rear seatback assembly R.H. for installation.



►C◄ INSTALLATION OF REAR SEAT CUSHION ASSEMBLY

Fit the rear seat cushion into the rear seat hook securely.

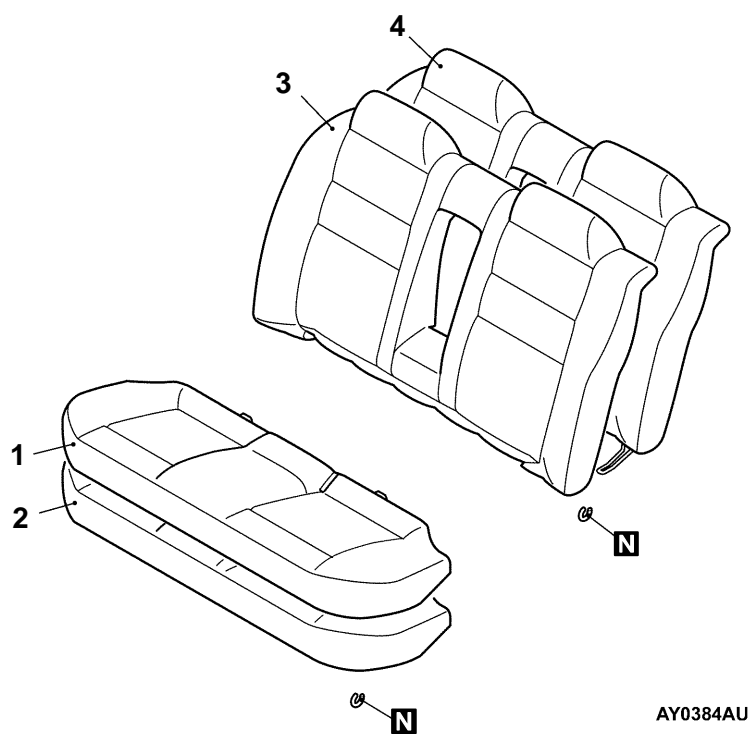
DISASSEMBLY AND REASSEMBLY

MAIN

Group
52

52A

<Type A>



AY0384AU

Removal steps

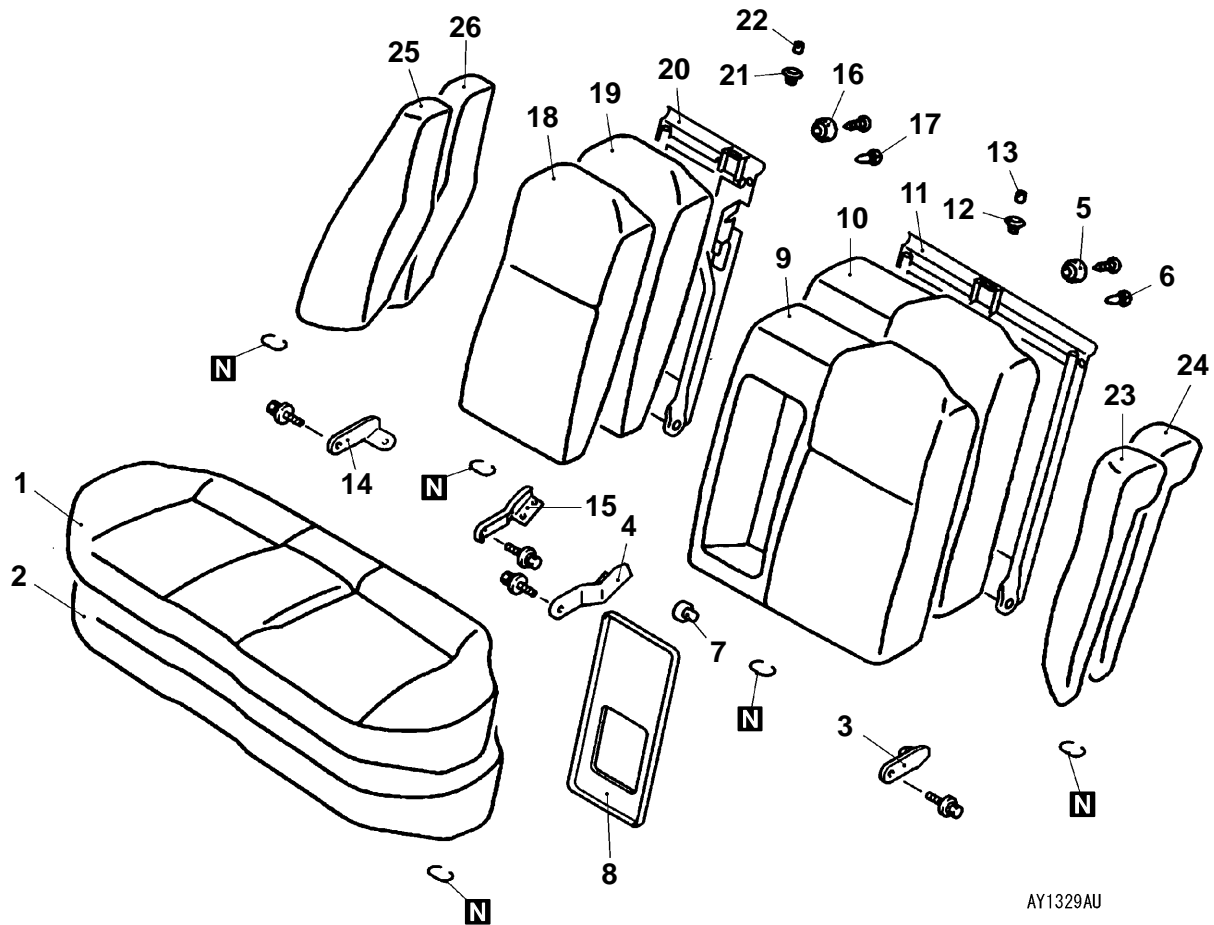
1. Rear seat cushion cover
2. Rear seat cushion pad
3. Rear seatback cover
4. Rear seatback pad

<Type B>

MAIN

Group
52

52A



AY1329AU

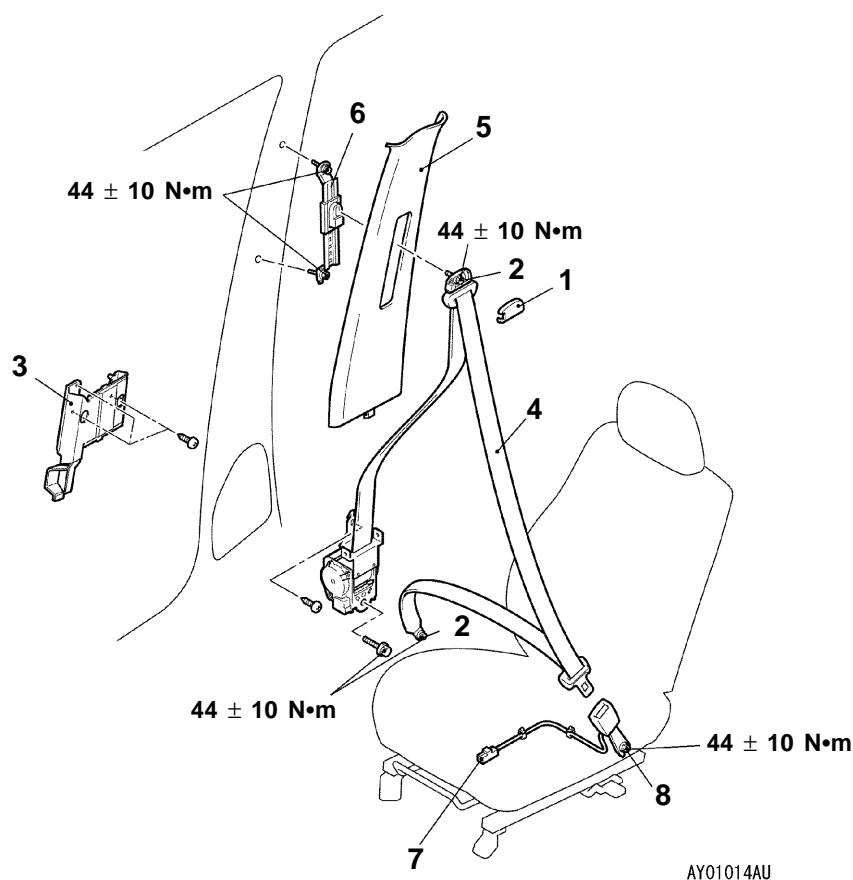
Disassembly steps

1. Rear seat cushion cover
2. Rear seat cushion pad
3. Side hinge bracket
4. Center hinge bracket
5. Rear seatback dumper
6. Clip
7. Armrest bush
8. Rear seatback armrest board
9. Rear seatback cover L.H.
10. Rear seatback pad L.H.
11. Rear seatback frame L.H.
12. Garnish
13. Knob
14. Side hinge bracket
15. Center hinge bracket
16. Rear seatback dumper
17. Clip
18. Rear seatback cover R.H.
19. Rear seatback pad R.H.
20. Rear seatback frame RH
21. Garnish
22. Knob
23. Rear seatback side cover L.H.
24. Rear seatback side cover L.H.
25. Rear seatback side cover R.H.
26. Rear seatback side cover R.H.

SEAT BELT

FRONT SEAT BELT

REMOVAL AND INSTALLATION



Outer seat belt removal steps

1. Sash cover guide
2. Outer seat belt connection
 - Lower center pillar trim
3. Bracket
4. Outer seat belt
5. Upper center pillar trim
6. Adjustable seat belt anchor

Inner seat belt removal steps

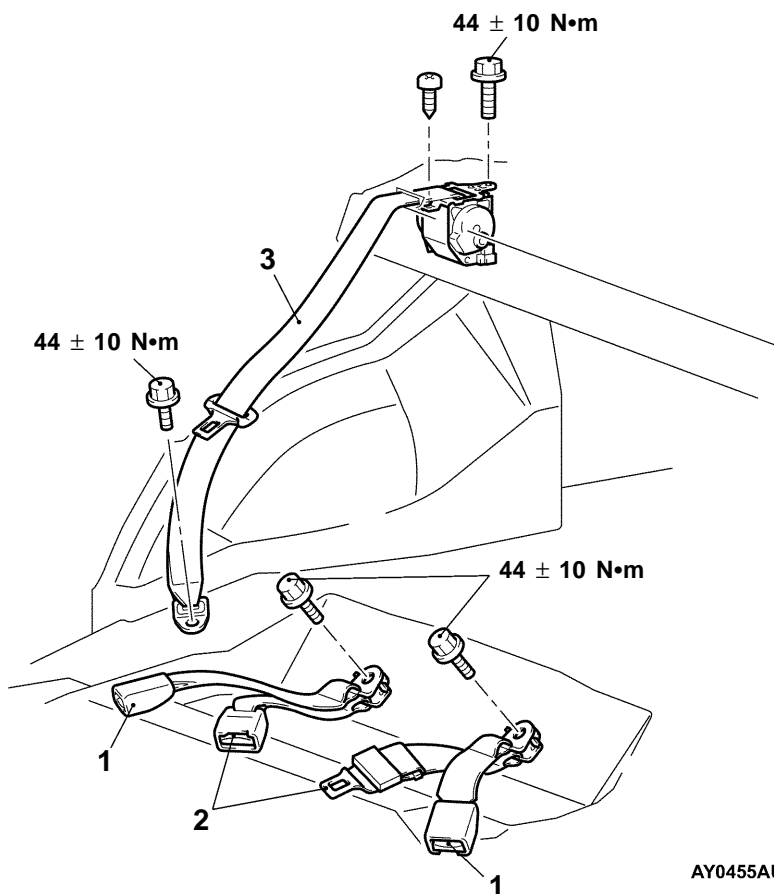
7. Harness connector
 - Shield cover
8. Inner seat belt

REAR SEAT BELT REMOVAL AND INSTALLATION

MAIN

Group
52

52A



Removal steps

- Rear seat cushion assembly
- Rear seatback assembly
- Rear shelf trim

1. Inner seat belt
2. Center seat belt
3. Outer seat belt