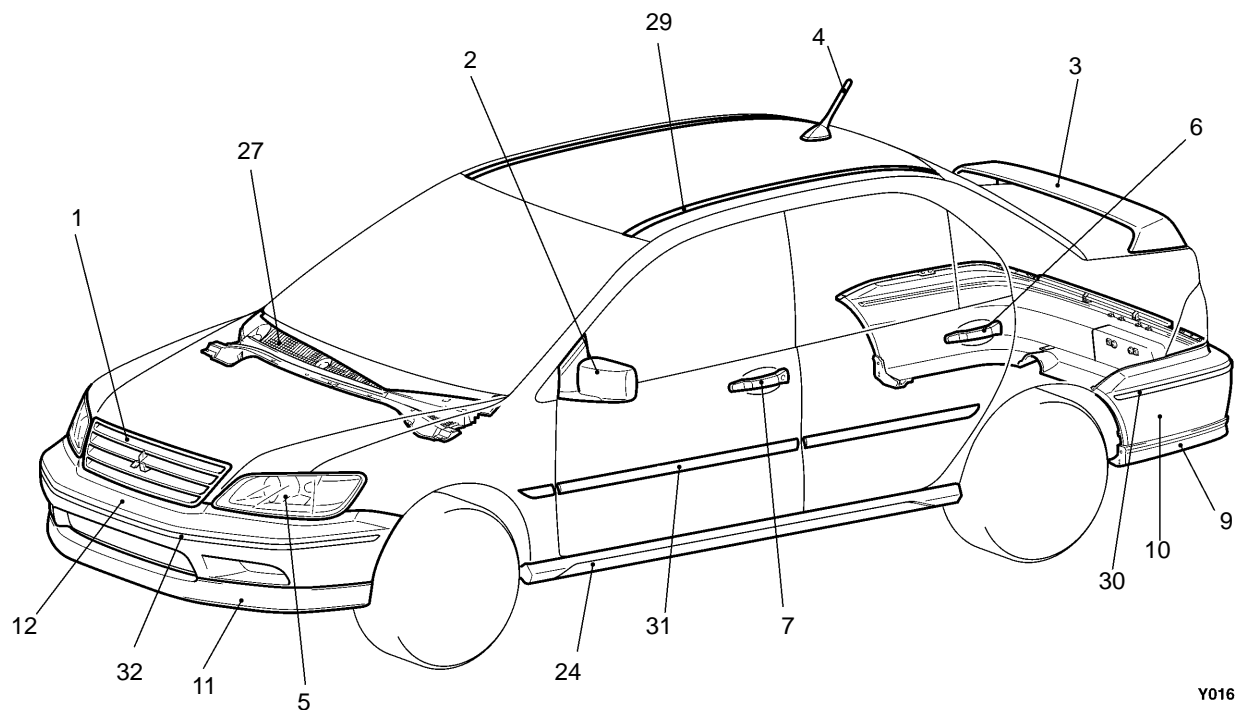
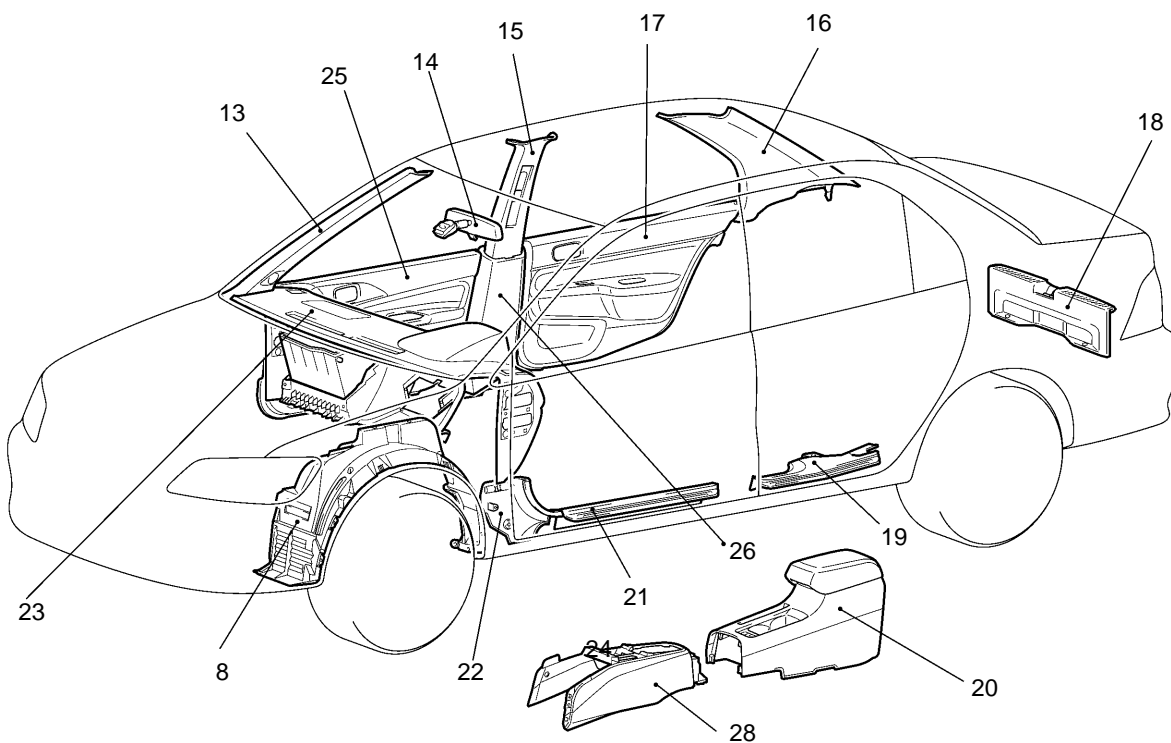


## LOCATION OF SYNTHETIC-RESIN PARTS

The following shows the main locations of synthetic-resin parts.



Y0162AV



Y0343A

## SYNTHETIC-RESIN PARTS – Location of Synthetic-resin Parts

No.	Part number	Material	Abbreviation of material	Heat-resistant temperature (°C)
1 2 3	Radiator grille Outside mirror Rear spoiler	Acrylonitrile Butadiene styrene	ABS	80
4	Roof antenna	Acrylonitrile Ethylene butadiene	AES	90
5	Headlamp	Polycarbonate	PC	120
6 7	Rear door outside handle Front door outside handle	Polycarbonate + Acrylonitrile butadiene styrene	PC + ABS	125 – 135
8	Splash shield	Polyethylene	PE	100
9 10 11 12 13 14 15 16 17 18 19 20 21 22 23	Rear air dam Rear bumper face Front air dam Front bumper face Front pillar trim Inside rear view mirror Centre pillar trim Rear pillar trim Rear door trim Rear end trim Rear scuff plate Rear console box Front scuff plate Cowl side trim Instrument panel	Polypropylene	PP	80
24 25	Side air dam Front door trim	Rubber denatured polypropylene	PP + E/P	80
26	Centre pillar trim lower	With 10 % talc added polypropylene	PP – TD10 (PPF)	110 – 120
27 28	Front deck garnish Floor console	With 20 % talc added polypropylene	PP – TD20 (PPF)	120 – 130
29 30 31 32	Roof drip molding Rear bumper molding Side molding Front bumper molding	Polyvinyl chloride	PVC	80

**Main  
Index**

**Group  
TOC**

### NOTE

1. If the new material symbols designated by the ISO differ from the old symbols, both are given, with the old symbols enclosed in brackets.  
ISO: (International Standardization Organization)
2. A slash (/) in the material symbol indicates that two different materials compose a 2-layer construction. A plus sign (+) indicates that the two different materials are mixed.
3. The material symbols for synthetic-resin parts are embossed on parts in hidden places.