

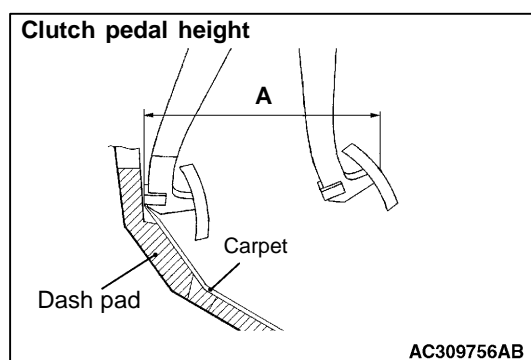
GENERAL

OUTLINE OF CHANGE

- The specification of the clutch pedal height has been changed as follows.
- The following service procedures have been changed to correspond to the adoption of auto-cruise control system. <vehicles with auto-cruise control system–M/T>

SERVICE SPECIFICATION

Item	Standard value
Clutch pedal height mm	201.8 – 205.8



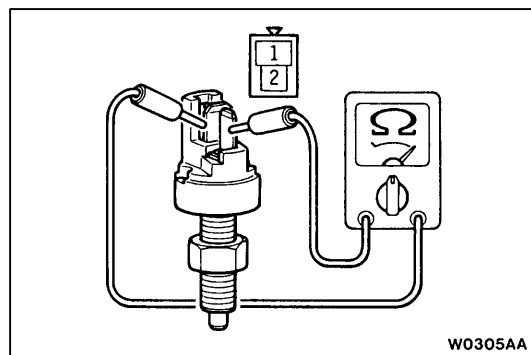
ON-VEHICLE SERVICE

CLUTCH PEDAL INSPECTION AND ADJUSTMENT

Service procedures other than the following are the same as before.

Measure the clutch pedal height.

Standard value (A): 201.8 – 205.8 mm



CLUTCH PEDAL POSITION SWITCH CONTINUITY CHECK

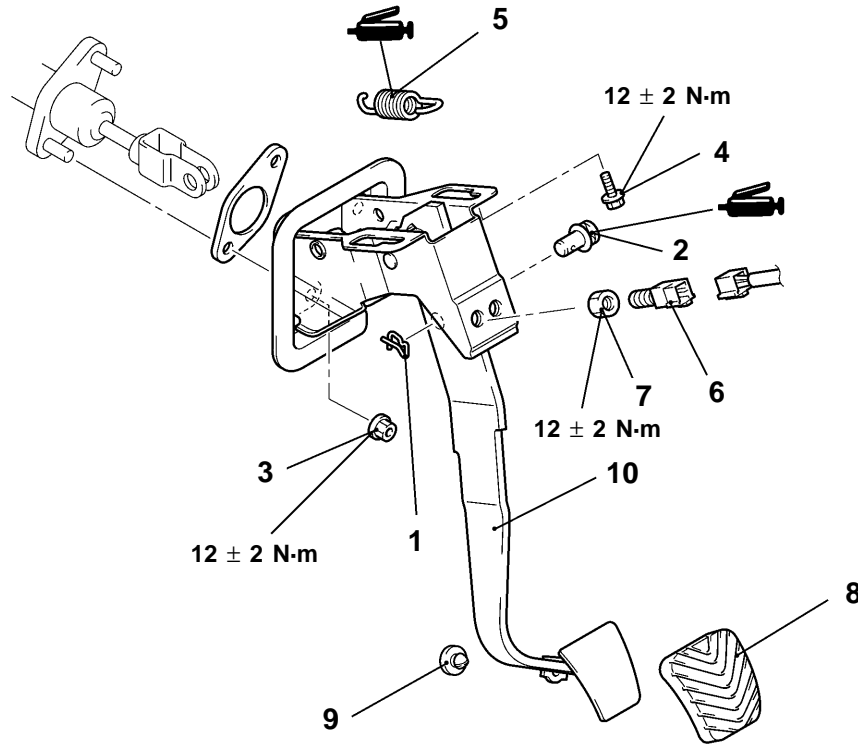
1. Adjust the clutch pedal.
2. Depress the clutch pedal, and check the continuity between the terminals.

Measurement Condition	Terminal No.	
	1	2
Clutch pedal depressed		
Clutch pedal not depressed		

CLUTCH PEDAL

REMOVAL AND INSTALLATION

Post-installation Operation
Clutch Pedal Adjustment

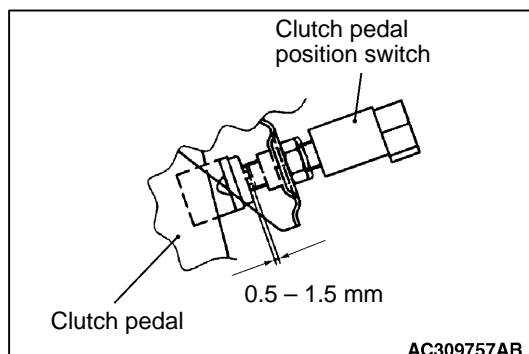


AC309744AB

Removal steps

- Instrument panel under cover
- 1. Snap pin
- 2. Clevis pin
- 3. Clutch master cylinder mounting nut
- 4. Master cylinder member mounting bolt
- 5. Return spring <vehicles with auto-cruise control system>

- ▶A◀ 6. Clutch pedal position switch <vehicles with auto-cruise control system>
- 7. Nut <vehicles with auto-cruise control system>
- 8. Pedal pad
- 9. Pedal stopper
- 10. Clutch pedal assembly



INSTALLATION SERVICE POINT

▶A◀ CLUTCH PEDAL POSITION SWITCH INSTALLATION

Install the clutch pedal position switch at the specified dimension when the clutch pedal is released.

AC309757AB