

GENERAL

OUTLINE OF CHANGES

The service procedures have been established due to the following changes. <VR-X>

- The coil spring specification has been changed.
- The trailing arm service procedure has been established due to the adoption of the rear disc brake.

COIL SPRING

Item	New	Old
Wire diameter × average diameter × free length mm	10 × 90 × 331	10 × 90 × 360

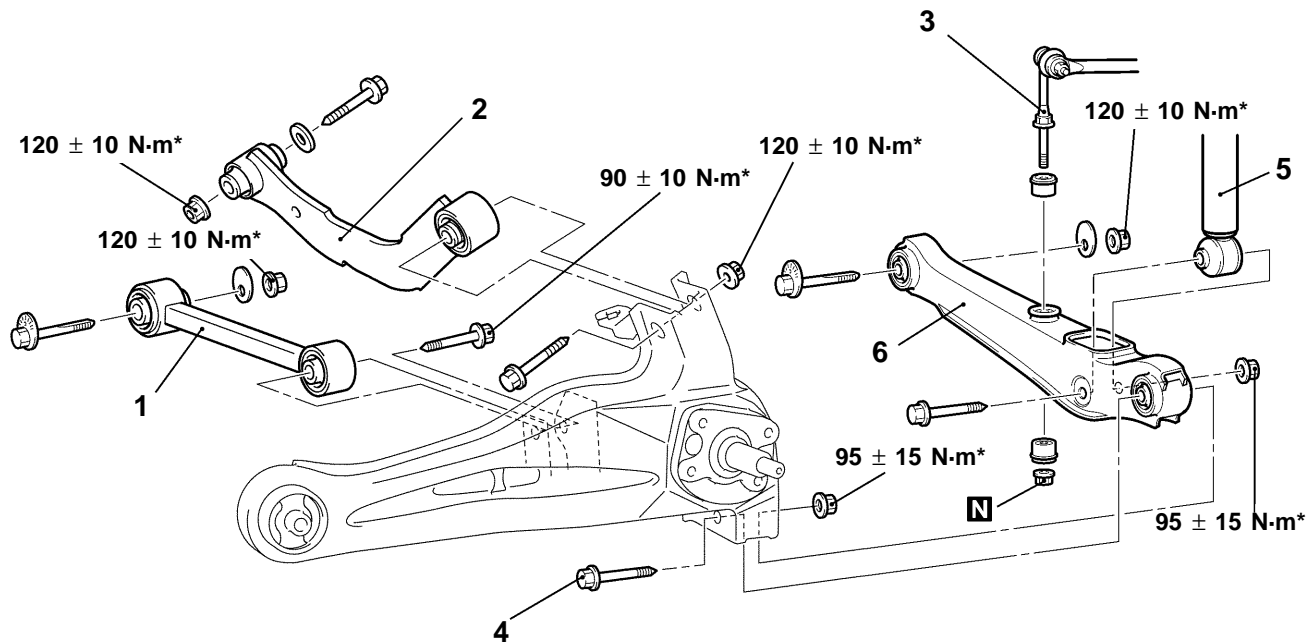
CONTROL LINK/UPPER ARM/LOWER ARM <VR-X>

REMOVAL AND INSTALLATION

Caution

*: To prevent bushings from breakage, the parts indicated by * should be temporarily tightened, and then fully tightened with the vehicle on the ground in the unladen condition.

Post-installation Operation
Wheel Alignment Check And Adjustment
(P.34-4.)



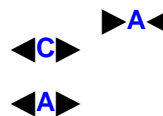
AC309763

Control link/Upper arm removal steps

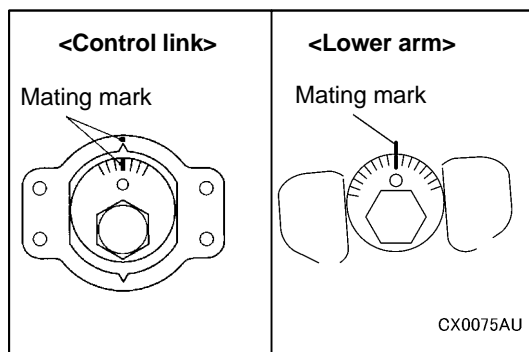


1. Control link
2. Upper arm

Lower arm removal steps



3. Stabilizer link connection
4. Lower arm and trailing arm connection
5. Shock absorber connection
6. Lower arm



REMOVAL SERVICE POINTS

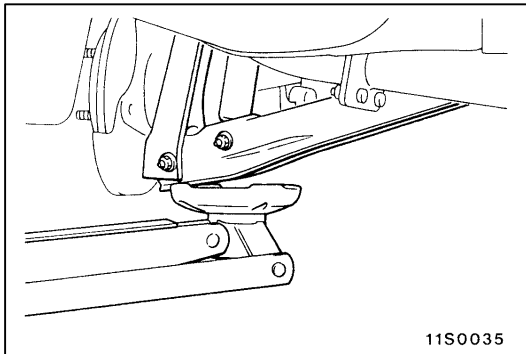
◀A▶ CONTROL LINK/LOWER ARM REMOVAL

After making a mating mark on the toe-in or camber adjusting bolt, remove the control link or lower arm.

34 REAR SUSPENSION – Control Link/Upper Arm/Lower Arm

Main
Index

Group
34

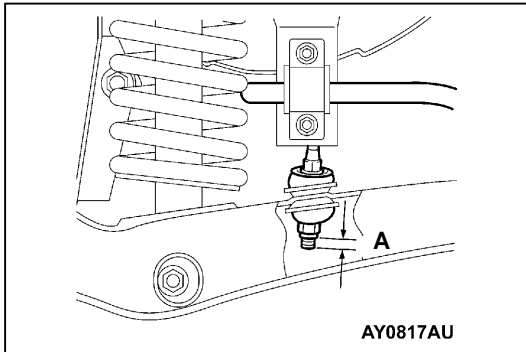


◀B▶ UPPER ARM REMOVAL

After supporting the lower arm with a jack, separate the upper arm and the trailing arm.

◀C▶ LOWER ARM AND TRAILING ARM DISCONNECTION

After supporting the lower arm with a jack, separate the lower arm and the trailing arm.

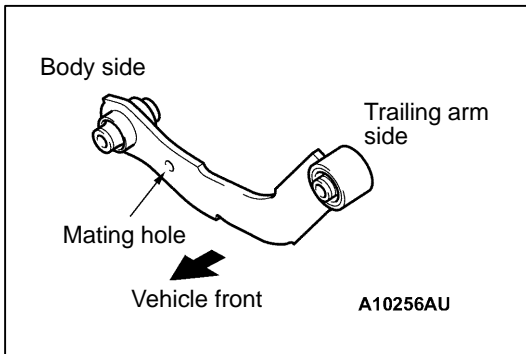


INSTALLATION SERVICE POINT

▶A◀ STABILIZER LINK CONNECTION

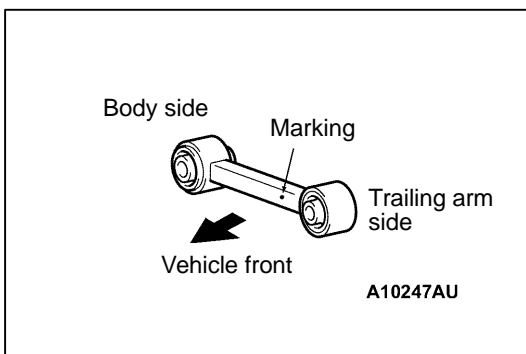
Tighten the self-locking nut so that the amount of protrusion of the end of the stabilizer link bolt is at the standard value.

Standard value (A): 6 – 8 mm



▶B◀ UPPER ARM INSTALLATION

Install the upper arm so that its hole faces inside of the vehicle.

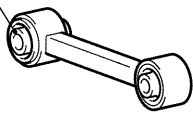


▶C◀ CONTROL LINK INSTALLATION

Install so that the marking faces towards the knuckle (vehicle front).

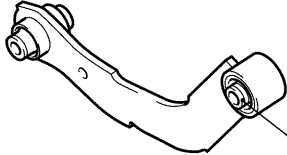
<Control link>

Pillow ball bushing



B10247AU

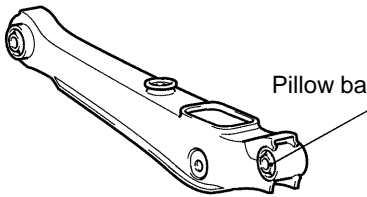
<Upper arm>



Pillow ball bushing

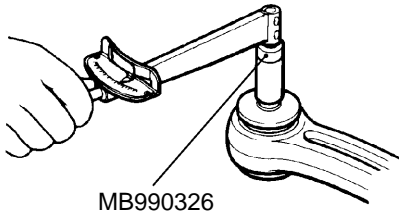
B10256AU

<Lower arm>



Pillow ball bushing

A10257AU



MB990326

B12Z0010

INSPECTION

CONTROL LINK PILLOW BALL BUSHING/UPPER ARM PILLOW BALL BUSHING/LOWER ARM PILLOW BALL BUSHING STARTING TORQUE INSPECTION

1. Insert a bolt into the pillow ball bushing and insert a washer from the opposite side. Then, install a nut. After turning the internal cylinder of the bushing (including washer) several times, measure the starting torque of the pillow ball bushing with the special tool.

Standard value: 0.5 – 3.0 N·m

2. If the measured value exceeds the standard value, replace the control link, upper arm and lower arm.
3. If the measured value is less than the standard value, check the bushing for excessive play or roughness. The bushing can be reused if there is no excessive play or roughness.

TRAILING ARM <VR-X>

REMOVAL AND INSTALLATION

Caution

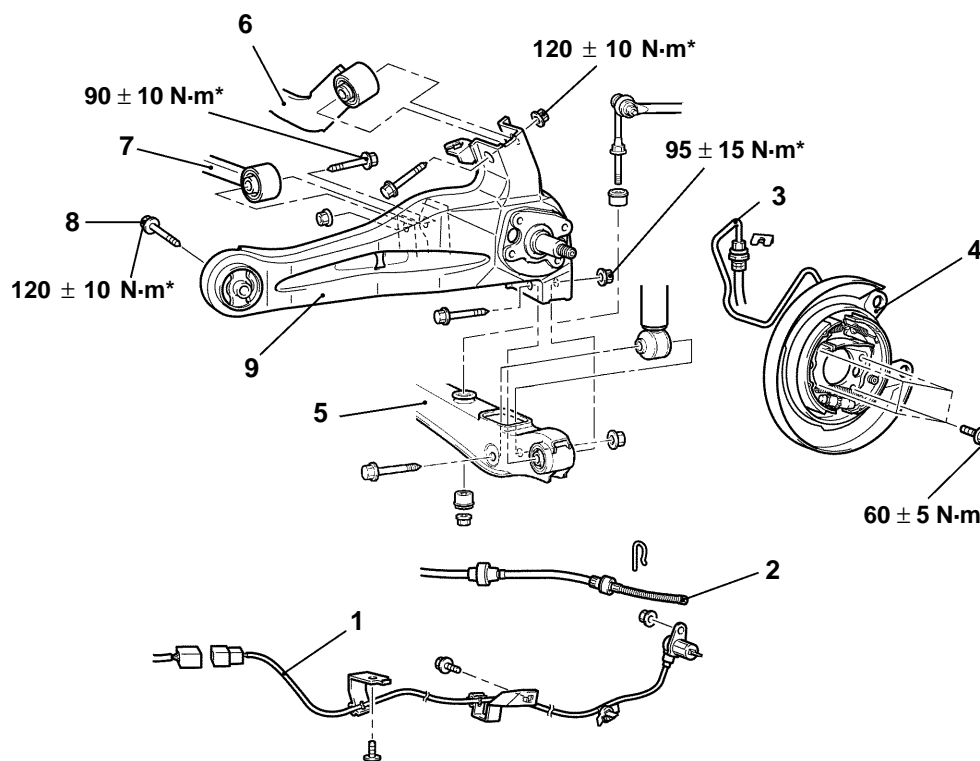
*: To prevent bushings from breakage, the parts indicated by * should be temporarily tightened, and then fully tightened with the vehicle on the ground in the unladen condition.

Pre-removal Operation

Rear Hub Assembly Removal (Refer to GROUP 27.)

Post-installation Operation

- Rear Hub Assembly Installation (Refer to GROUP 27.)
- Wheel Alignment Check and Adjustment
- Parking Brake Lever Stroke Adjustment (Refer to GROUP 36.)



AC309765

Removal steps

- Lifting point
- 1. Rear wheel speed sensor <Vehicle with ABS>
- 2. Parking brake cable connection
- 3. Brake hose and trailing arm connection



- 4. Rear parking brake assembly
- 5. Lower arm and trailing arm connection
- 6. Upper arm and trailing arm connection
- 7. Control link and trailing arm connection
- 8. Trailing arm and body connecting bolt
- 9. Trailing arm

NOTE

Removal service points are the same as before.