

GENERAL

OUTLINE OF CHANGE

The service procedures have been established due to the following changes. The other service procedures are the same as before.

- Rear drum-in disc brake has been adopted. <VR-X>
- Rear parking brake cable has been changed.

SERVICE SPECIFICATION <VR-X>

| Item | Standard value | Limited value |
|--|----------------|---------------|
| Parking brake lever stroke (operating force: approx. 200N) | 4 – 5 Notch | — |
| Brake lining thickness mm | 2.8 | 1.0 |
| Brake drum inside diameter mm | 168.0 | 169.0 |

ON-VEHICLE SERVICE <VR-X>

PARKING BRAKE LEVER STROKE CHECK AND ADJUSTMENT

1. Pull the parking brake lever with a force of approx. 200 N and count the number of notches.

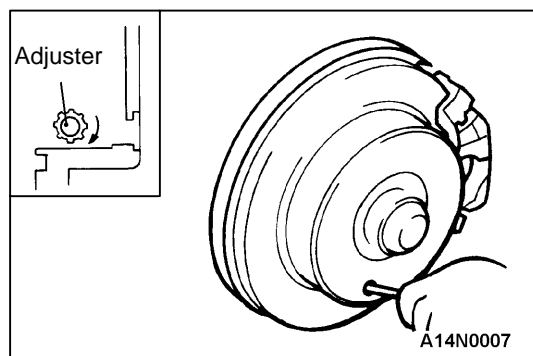
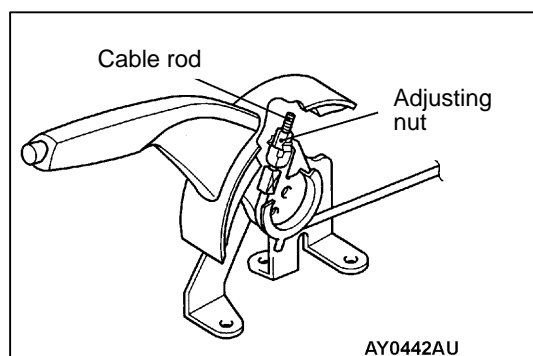
Standard value: 4 – 5 notches

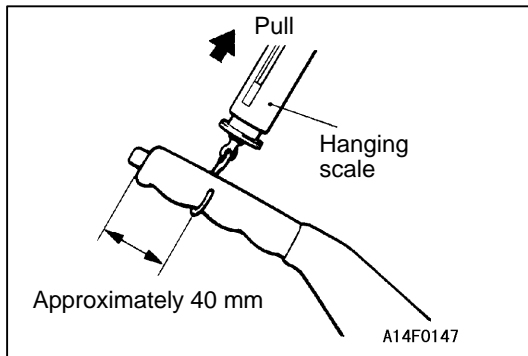
2. If the parking brake lever stroke is not the standard value, adjust as described below.
 - (1) Remove the floor console assembly.
 - (2) Loosen the adjusting nut to move it to the cable rod end so that the cable will be free.
 - (3) Remove the adjusting hole plug of the rear brake disc and use a flat-tipped screwdriver to turn the adjuster in the direction of an arrow (direction of shoe expansion) so that braking force can be applied to the disc lightly (enough to prevent the disc from rotating with both hands). And then, turn the adjuster in the reverse direction of an arrow by 5 notches.
 - (4) Turn the adjusting nut to adjust the parking brake lever stroke to the standard value. Check that no wobbles are found between the adjusting nut and the parking brake lever after adjustment. Furthermore, check that the adjusting nut is firmly held by the nut holder.

Caution

If the parking brake lever stroke is below the standard value and the braking is too firm, the rear brakes may drag.

- (5) After adjusting the parking brake lever stroke, jack up the rear end of the vehicle, and then release the parking brake and turn the rear wheels to check that the rear brakes are not dragging.





TUNING UP LINING

If either parking brake lining or rear brake disc is replaced and the braking effect is not sufficient, carry out tuning up according to the following steps.

Caution

Pay extra attention to safety when conducting tuning up in a place with an unobstructed view.

1. Adjust the parking brake stroke to the standard value.
2. Hook the hanging scale on to the center of the grip of the parking brake lever to pull with a force of 100 N to 150 N in the perpendicular direction to the parking brake lever.
3. Drive the vehicle for 100 meters at a constant speed of 35 to 50 km/h.
4. Release the parking brake and cool down the brake for 5 to 10 minutes.
5. Repeat the steps from 2 to 4 four or five times.

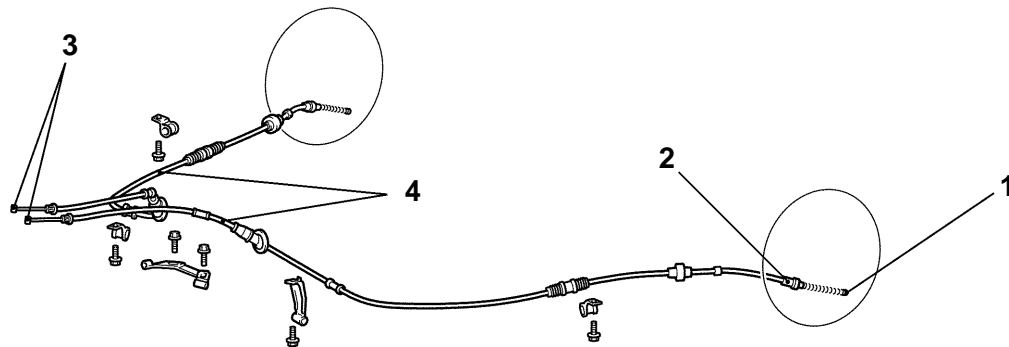
PARKING BRAKE CABLE REMOVAL AND INSTALLATION <EXCEPT VR-X>

Pre-removal Operation

- Rear Floor Console Assembly and Rear Console Bracket Removal
- Rear Seat Cushion Assembly Removal
- Rear Drum Brake Removal

Post-installation Operation

- Rear Drum Brake Installation (Refer to GROUP 35A – Rear Drum Brake.)
- Parking Brake Lever Stroke Adjustment
- Rear Seat Cushion Installation
- Rear Console Bracket and Rear Floor Console Assembly Installation



AC210061AB

Removal steps

1. Rear parking brake cable and shoe and lever assembly connection
2. Rear parking brake cable and backing plate connection
3. Rear parking brake cable and parking brake lever connection
4. Rear parking brake cable

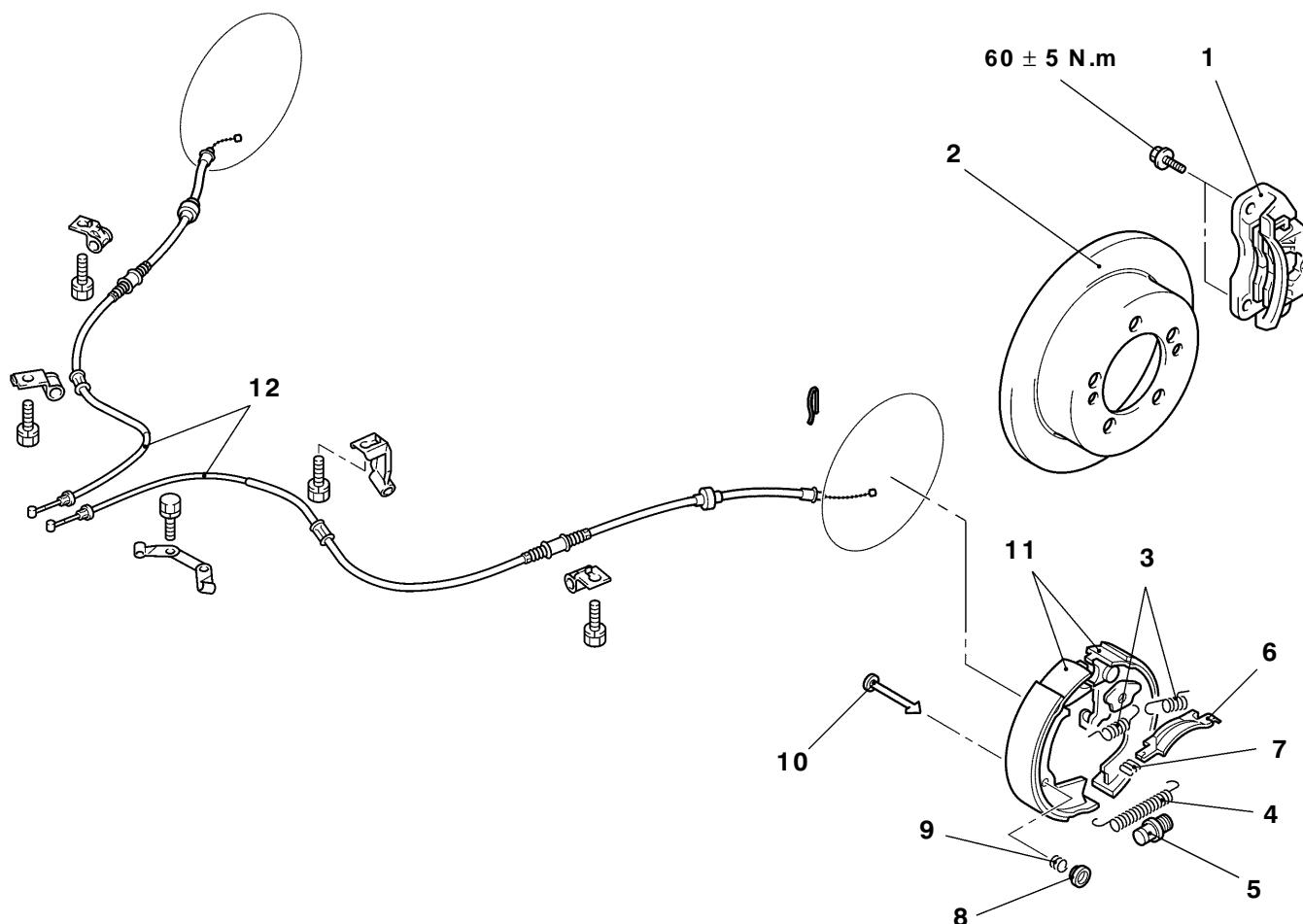
<VR-X>

Pre-removal Operation

- Rear Floor Console Assembly and Rear Console Bracket Removal
- Rear Seat Cushion Assembly Removal
- Rear Brake Disc Removal (Refer to GROUP 35A – Disc Brake.)

Post-installation Operation

- Rear Brake Disc Installation (Refer to GROUP 35A – Disc Brake.)
- [Parking Brake Lever Stroke Adjustment](#)
- Rear Seat Cushion Installation
- Rear Console Bracket and Rear Floor Console Assembly Installation



BY1369AU

Removal steps



1. Rear brake caliper

2. Rear brake disc



3. Shoe-to-anchor spring

4. Adjusting screw spring



5. Adjuster assembly

6. Strut

7. Strut return spring

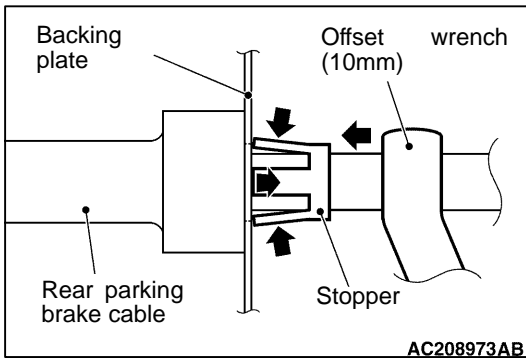
8. Shoe hold-down cup

9. Shoe hold-down spring

10. Shoe hold-down pin

11. Shoe and lining assembly

12. Rear parking brake cable



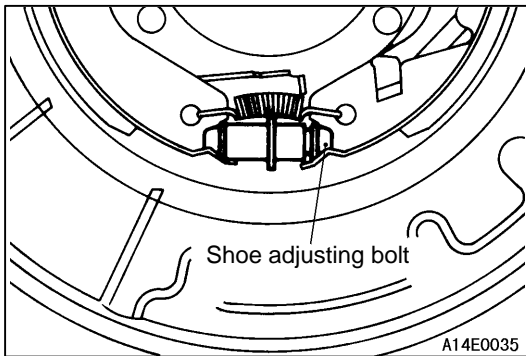
REMOVAL SERVICE POINTS

◀A▶ REAR PARKING BRAKE CABLE AND BACKING PLATE CONNECTION

1. Pass the rear parking brake cable through the offset wrench (10 mm) and push it into the position where the claw of rear parking brake cable stopper can be compressed.
2. Pull out the rear parking brake cable towards the rear of the backing plate.

◀B▶ REAR BRAKE CALIPER REMOVAL

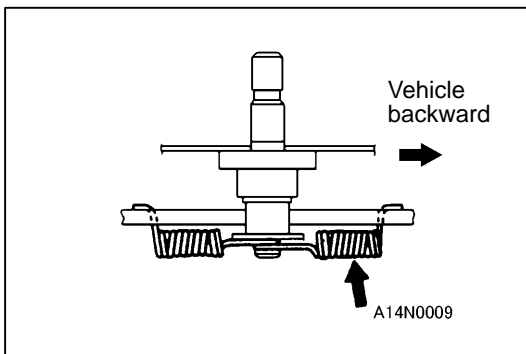
Remove the rear brake caliper and hold it with wires and the like.



INSTALL SERVICE POINTS

▶A◀ ADJUSTER ASSEMBLY INSTALLATION

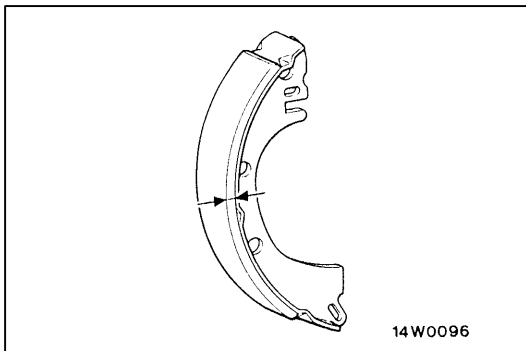
Install the shoe adjusting bolt of the adjuster assembly so that the bolt can face rearward of the vehicle on the left side and can face forward of the vehicle on the right side.



▶B◀ SHOE-TO-ANCHOR SPRING INSTALLATION

Since load weight applied to each shoe-to-anchor spring is different, install the painted spring to rearward of the vehicle.

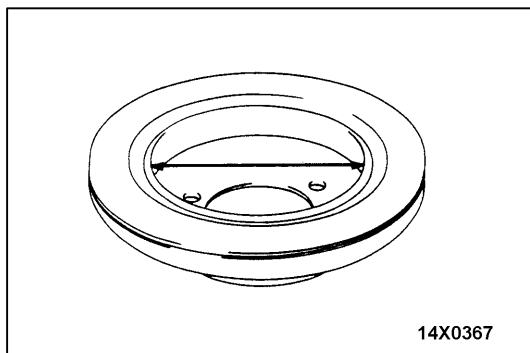
NOTE: Shown in the illustration is the left rear wheel, and the right rear wheel in the symmetrical position.



INSPECTION

BRAKE LINING THICKNESS CHECK

1. Measure the lining thickness at the most worn area.
Standard value: 2.8 mm
Limit: 1.0 mm
2. If the brake lining is worn more than the limited value, replace shoe and lining assembly together at both sides.



BRAKE DRUM INSIDE DIAMETER CHECK

1. Measure the brake drum inside diameter at two or more areas.

Standard value: 168.0 mm

Limit: 169.0 mm

2. If the brake drum inside diameter is worn more than the limited value or an extreme case of uneven wear is found, replace the brake disc.