

GENERAL

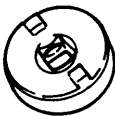
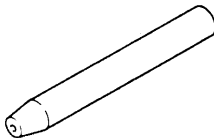
OUTLINE OF CHANGE

- Due to the changes on the steering gear and linkage, the service procedures have been changed. <VR-X>
- Due to the adoption of the 16-inch wheels, the steering angle has been changed. <VR-X>
- Due to the addition of the steering shift switch, the service procedures have been changed. <VR-X>

GENERAL SPECIFICATION <VR-X>

Item		New	Old
Steering gear and linkage	Rack stroke mm	141	146

SPECIAL TOOLS

Tool	Number	Name	Use
 B991621	MB991621	Rack support cover wrench	<ul style="list-style-type: none"> • Rack support cover removal • Total pinion torque adjustment
 B991212	MB991213	Oil seal protector	Rack assembly installation

SERVICE SPECIFICATIONS <VR-X>

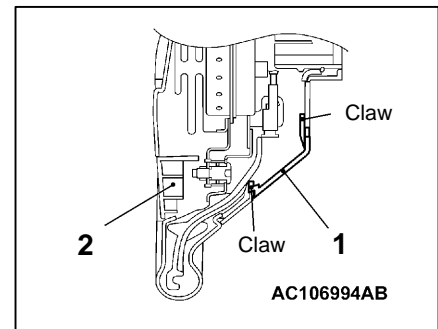
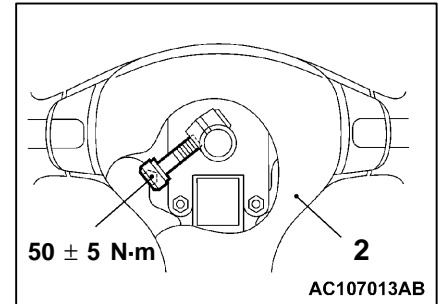
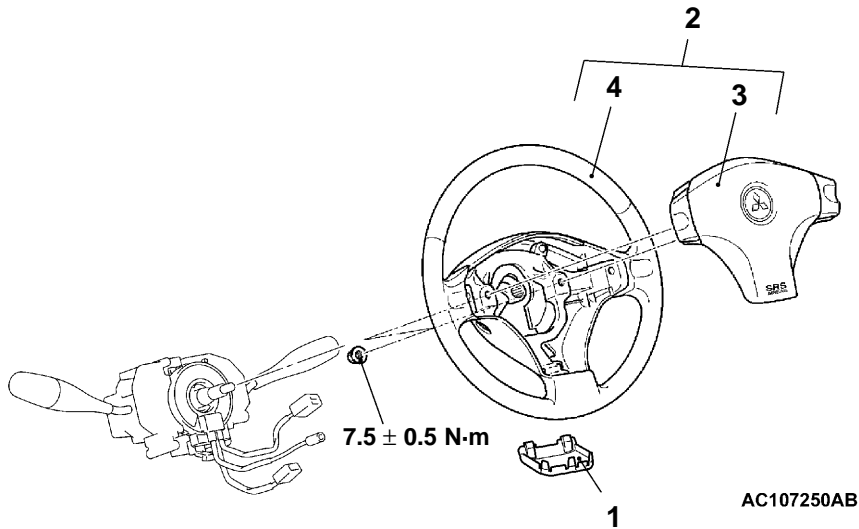
Item		Standard value
Steering angle	Inner wheel	37°00' +1°00'/-2°00'
	Outer wheel <For reference>	30°00'

STEERING WHEEL <VR-X>**REMOVAL AND INSTALLATION****Caution:**

Before removing the air bag module and clock spring, refer to GROUP 52B – Air Bag Module and Clock Spring.

Pre-removal Operation

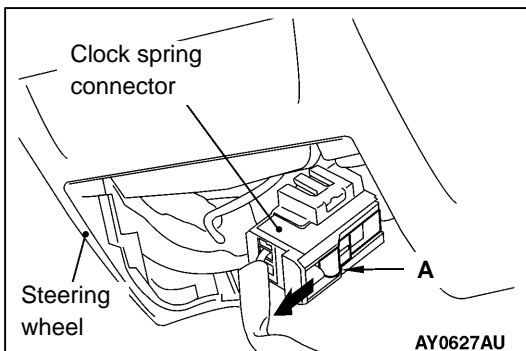
Confirm that the steering wheel is at the straight-ahead position.

**Removal steps**

1. Cover
2. Steering wheel and air bag module assembly



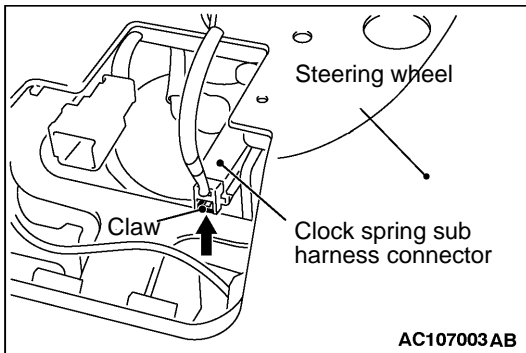
3. Air bag module
4. Steering wheel

**REMOVAL SERVICE POINTS**

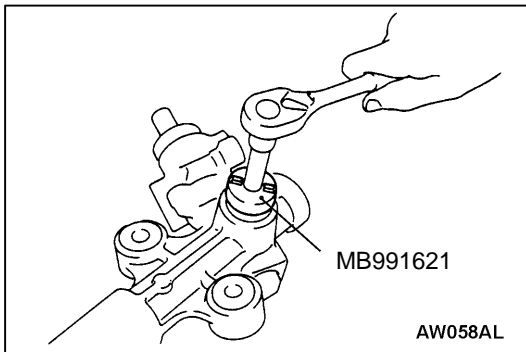
The procedures other than before are the same as before.

** STEERING WHEEL AND AIRBAG MODULE ASSEMBLY REMOVAL**

1. By sliding section A of the clock spring connector shown in the illustration in the arrow direction, disconnect the connector.



- Pressing the claw of the clock spring sub harness connector towards the arrowed direction, disconnect the connector.



POWER STEERING GEAR BOX AND LINKAGE

The procedures other than below are the same as before.

DISASSEMBLY SERVICE POINTS

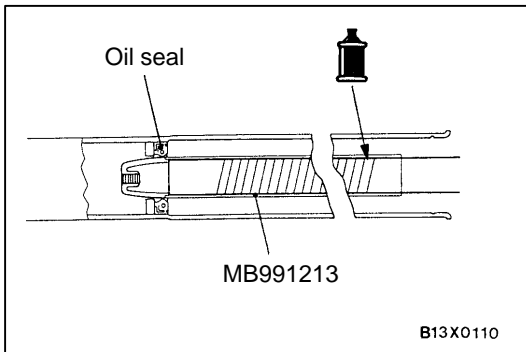
◀A▶ RACK SUPPORT COVER REMOVAL

Use special tool MB991621 (rack support cover wrench) to remove the rack support cover. The other special tools are the same as before.

REASSEMBLY SERVICE POINTS

▶C◀ RACK ASSEMBLY INSTALLATION

Use special tool MB991213 (oil seal protector) to install the rack. The other special tools are the same as before.



▶I◀ RACK SUPPORT COVER/LOCKING NUT INSTALLATION

Use special tool MB991621 (rack support cover wrench) to install the rack support cover. The other special tools are the same as before.

