

# GENERAL

## OUTLINE OF CHANGE

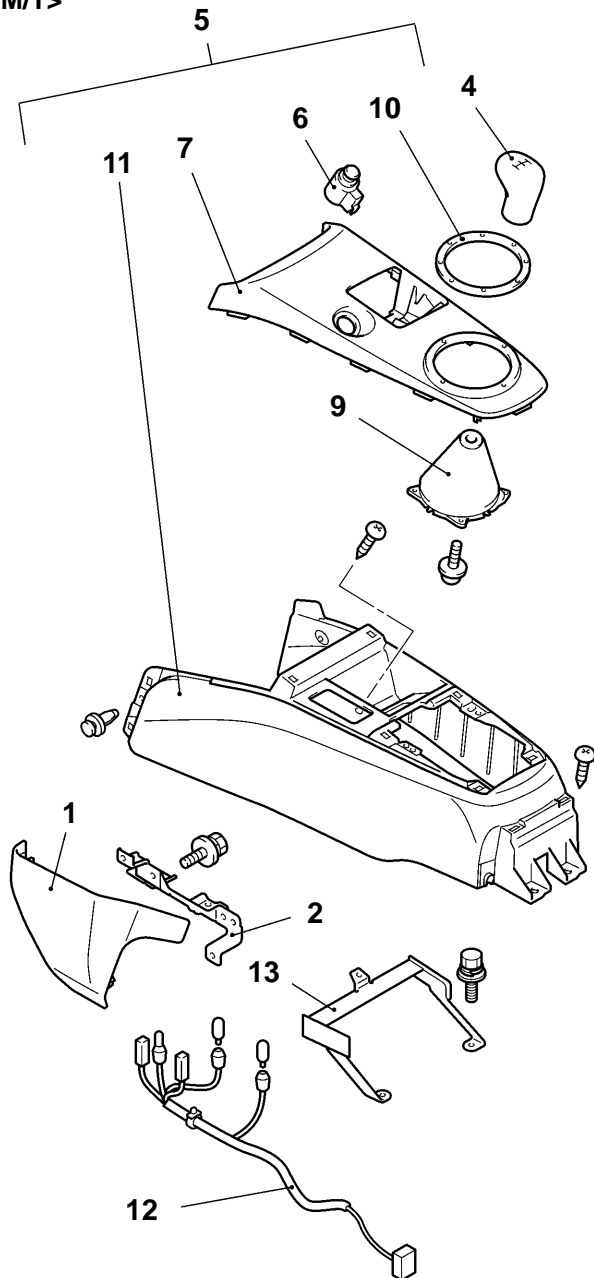
The service procedures have been established due to the following changes.

- A shift lever panel garnish <M/T> or a shift lever ring <A/T> has been added to the front floor console. <VR-X>
- The inside rear view mirror has been reshaped.
- The rear centre seat belt has been changed from two-point type to three-point type.

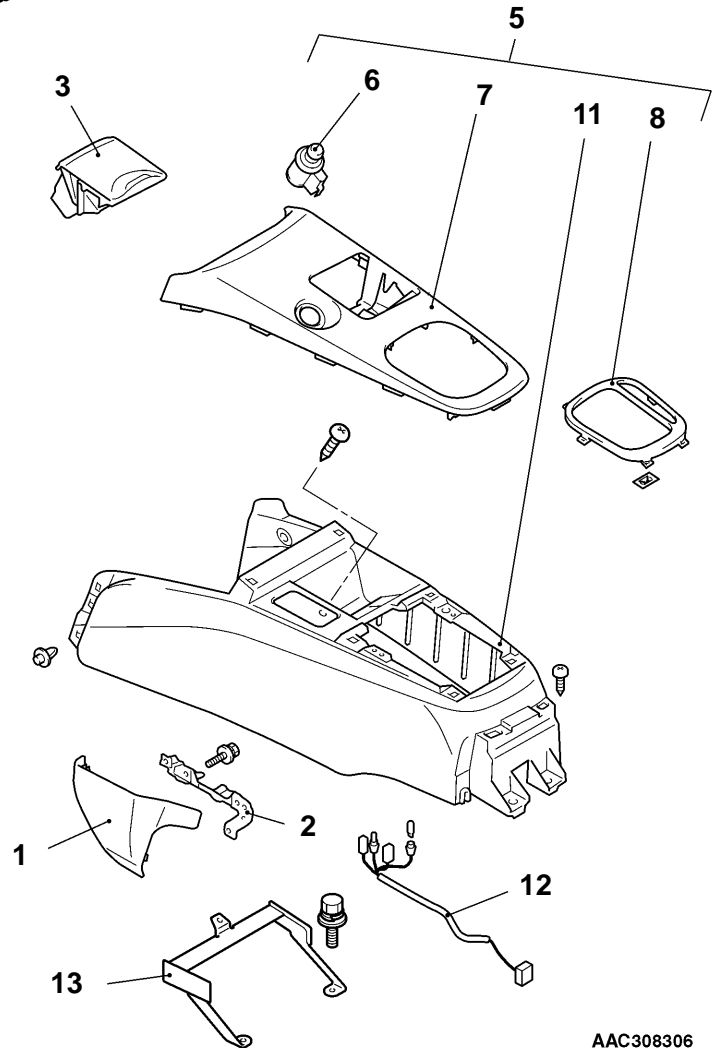
## FRONT FLOOR CONSOLE &lt;VR-X&gt;

## REMOVAL AND INSTALLATION

&lt;M/T&gt;



&lt;A/T&gt;

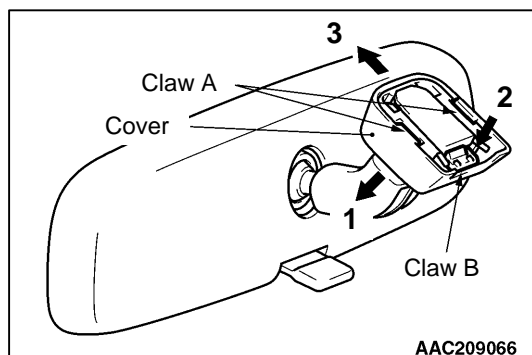


AAC308306

**Removal steps**

- Rear floor console assembly
- 1. Console side cover
- 2. Console side cover bracket
- 3. Ashtray
- 4. Shift lever knob <M/T>
- 5. Front floor console assembly
- 6. Cigarette lighter

- 7. Front floor console panel
- 8. Shift lever ring <A/T>
- 9. Shift lever boots <M/T>
- 10. Shift lever panel garnish <M/T>
- 11. Front floor console
- 12. Harness
- 13. Front floor console bracket



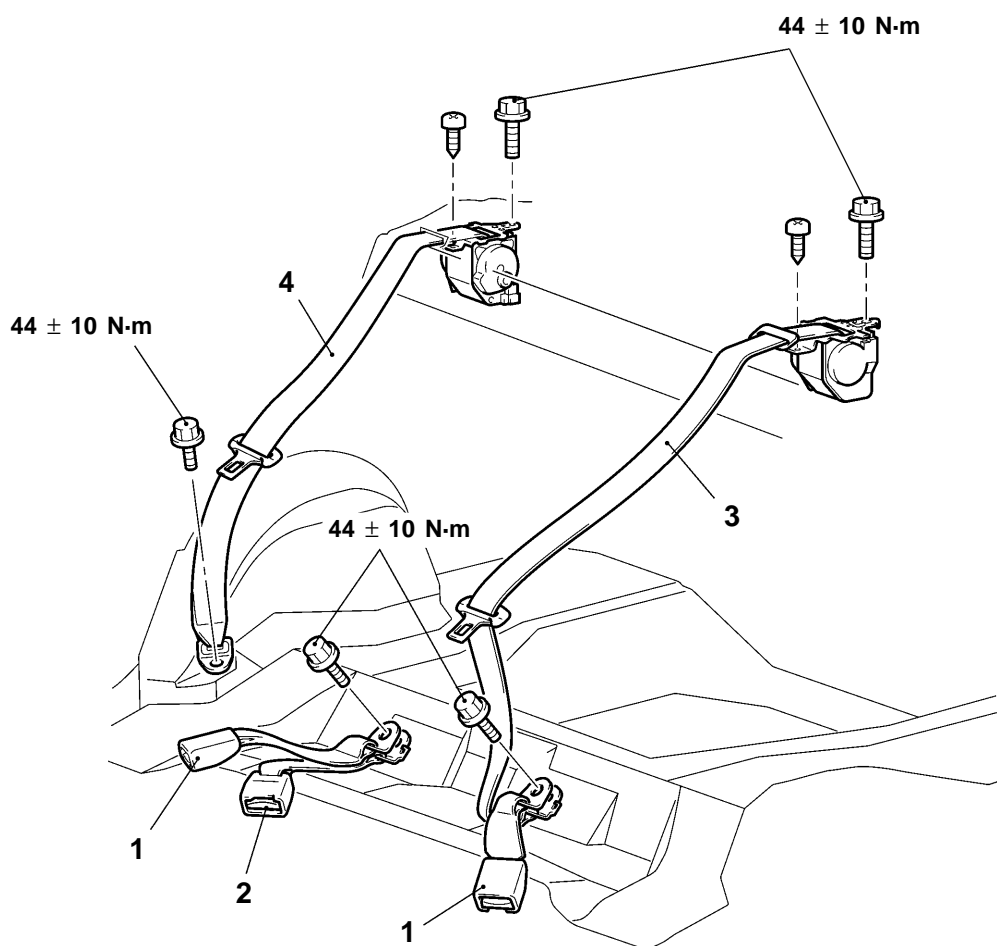
## INSIDE REAR VIEW MIRROR

### REMOVAL SERVICE POINT

1. Disengage the claw A and lower the cover toward arrow 1 direction.
2. Push the claw B toward arrow 2 direction to unlock, and pull out the mirror toward arrow 3 direction.

## REAR SEAT BELT

### REMOVAL AND INSTALLATION



AAC308393

#### Removal steps

- Rear seat cushion assembly
  - Rear seatback assembly
  - Rear shelf trim
1. Inner seat belt

2. Centre seat belt, inner
3. Centre seat belt, outer
4. Outer seat belt