

---

## GROUP 37

# POWER STEERING

### CONTENTS

GENERAL INFORMATION .....	37-2	OIL PUMP .....	37-6
STEERING WHEEL .....	37-3	STEERING GEAR .....	37-6
STEERING SHAFT AND COLUMN..	37-4	OIL RESERVOIR .....	37-7

## GENERAL INFORMATION

M2370000100646

Power steering has been adopted in all vehicles to make the steering system easier to handle.

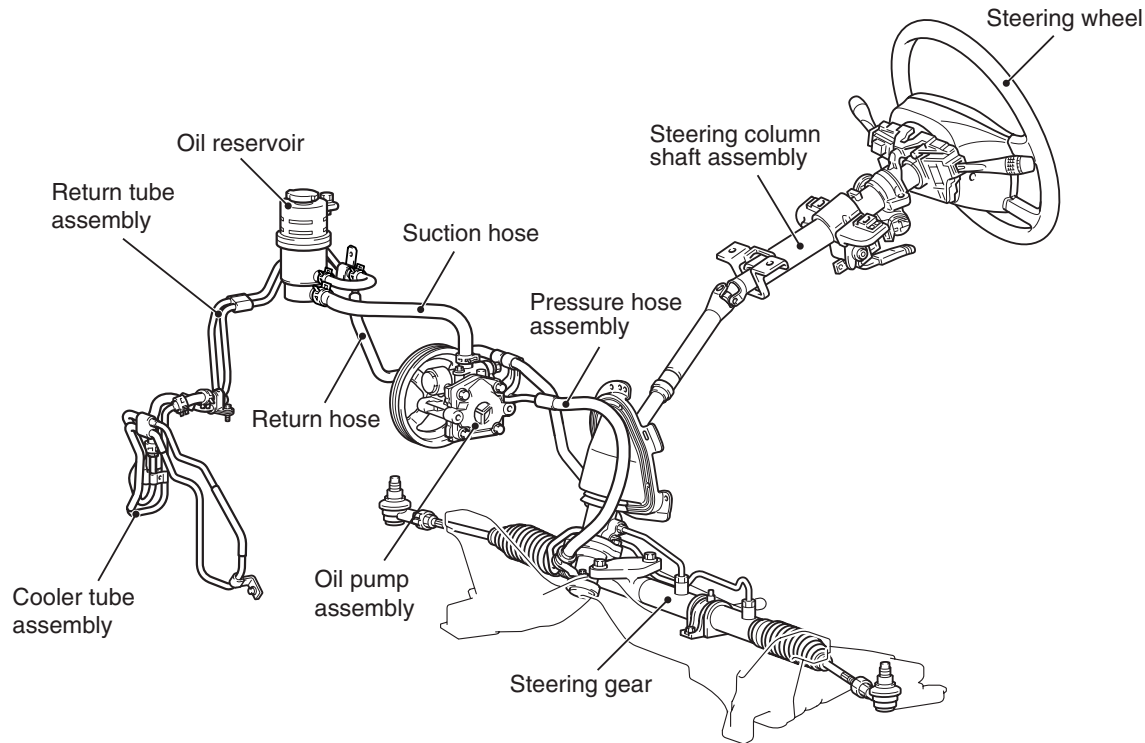
## FEATURES

- A 4-spoke steering wheel is used.
- A steering column has a shock absorbing mechanism and a tilt steering mechanism.
- Integral-type rack and pinion gear with high rigidity and excellent response is used.
- A vane type pump with a fluid flow rate control system which changes steering effort according to the engine speed is used.
- The separate plastic resin oil reservoir is used to reduce weight and to make the fluid level checking easier.

## SPECIFICATIONS

Item		ES	VR-X
Steering wheel	Type	4-spoke type	
	Outside diameter mm	380	380
	Maximum number of turns	3.19	3.08
Steering column	Column mechanism	Shock absorbing mechanism and tilt steering mechanism	
Power steering type		Integral type	
Oil pump	Type	Vane pump	
	Basic delivery rate cm <sup>3</sup> /rev.	7.2	7.2
	Relief pressure MPa	8.8	8.8
	Reservoir type	Separate type (plastic)	
	Pressure switch	Equipped	
Steering gear	Type	Rack and pinion	
	Stroke ratio (Rack stroke/Steering wheel maximum turning radius)	45.74	45.74
	Rack stroke mm	146	141
Steering angle	Inner wheel	41°	37°
	Outer wheel	33°	30°
Power steering fluid	Specified lubricants	ATF DEXRON III or DEXRON II	
	Quantity L	Approximately 1.0	

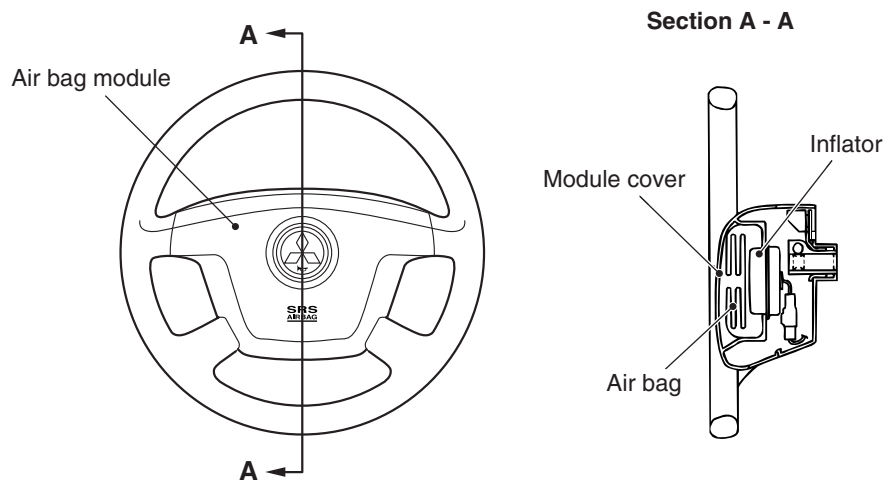
## CONSTRUCTION DIAGRAM



AC504569AB

## STEERING WHEEL

M2370001000545



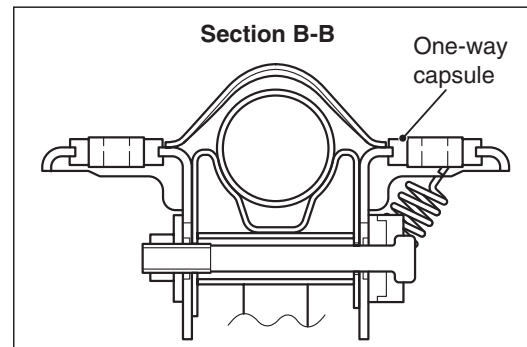
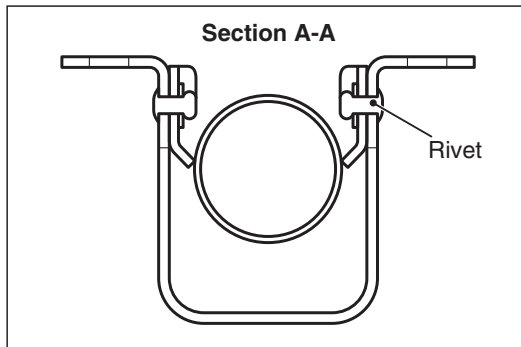
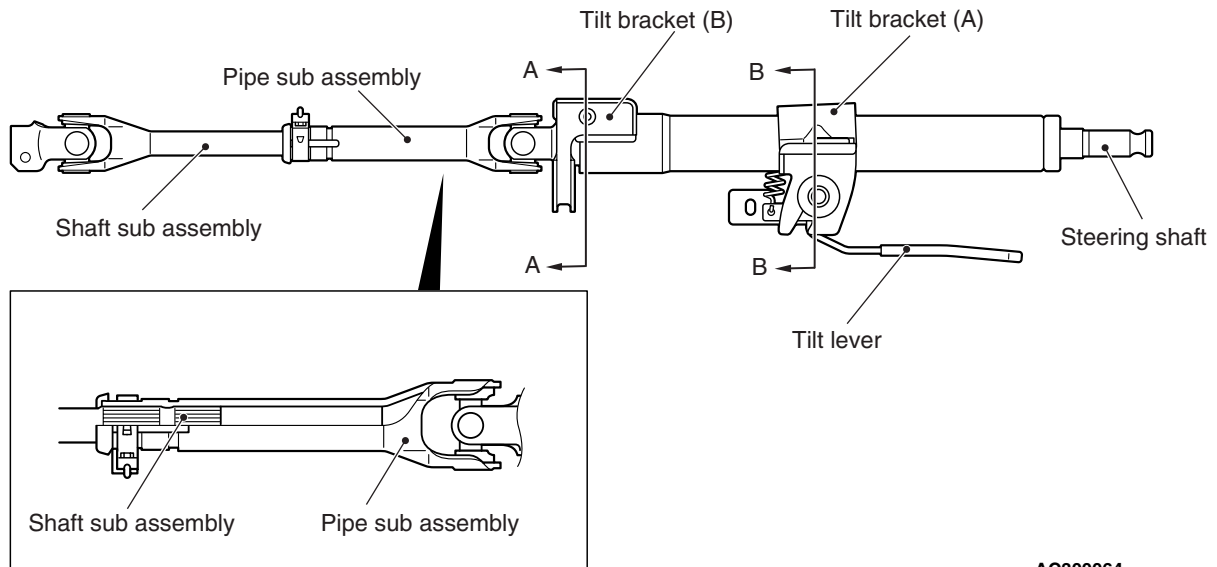
AC504562AB

The steering wheel is designed to improve operability, safety and maintainability and has the following features:

- It has 4-spoke and comes in two types: with and without a synthetic leather-wrapped.
- It incorporates an air bag module to protect the driver in the event of a frontal collision.
- The airbag module is equipped with an inflator that does not contain sodium azide.

## STEERING SHAFT AND COLUMN

M2370002000333

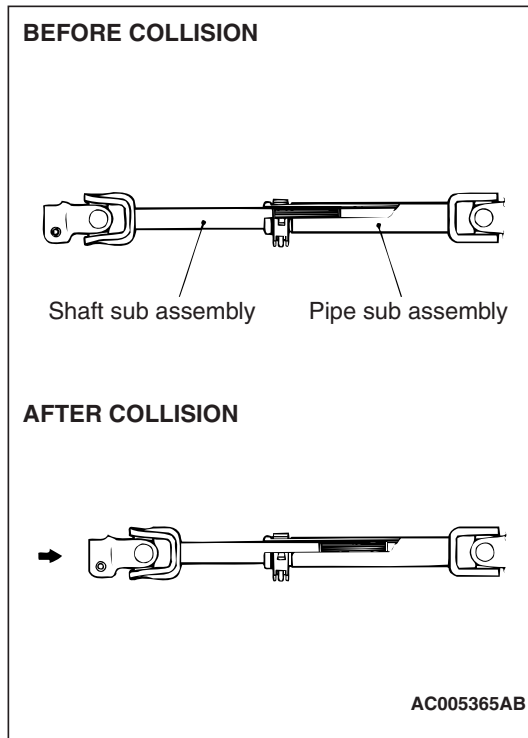


AC404387AB

The steering column uses an impact absorbing mechanism which absorbs impact energy in the event of a collision as well as a tilt steering mechanism which enables the driver to obtain an optimum driving position.

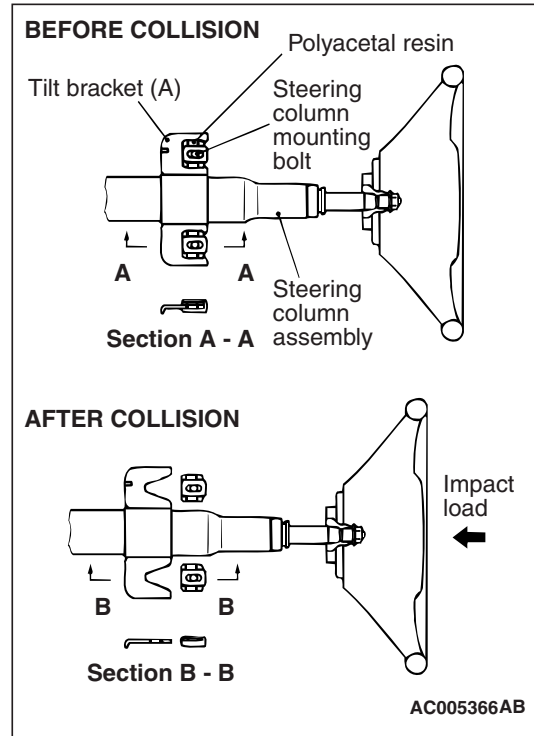
The tilt steering mechanism is essentially the same as the conventional one.

## SHOCK ABSORBING MECHANISM PRIMARY IMPACT

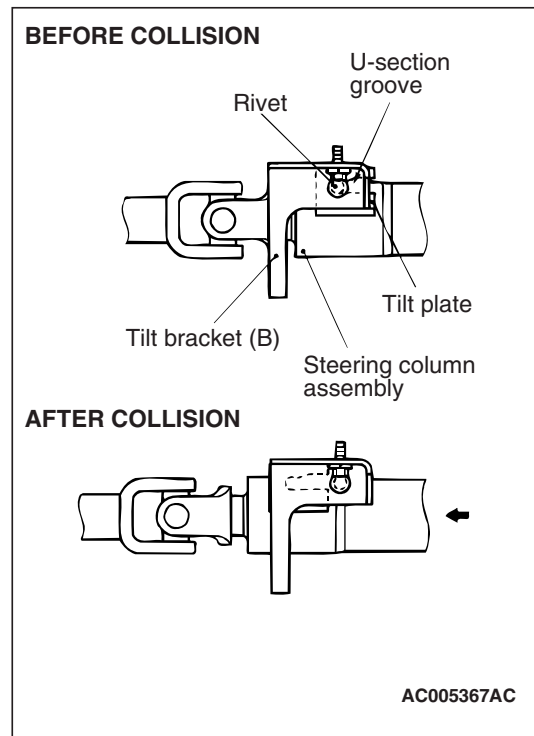


When the vehicle collides with something and there is a load added to the shaft sub assembly from the gearbox, the shaft sub assembly slides above the pipe sub assembly to absorb the shock load. This prevents the steering column from moving backwards during the impact.

## SECONDARY IMPACT



1. When the driver's body falls against the deployed air bag, the tilt bracket (A) moves forwards by crushing the polyacetal resin, causing the steering column assembly to move into the engine compartment.



2. As the bracket breaks free, the rivet comes out of the U-section groove in the tilt plate, allowing the steering column assembly to move forward.

## OIL PUMP

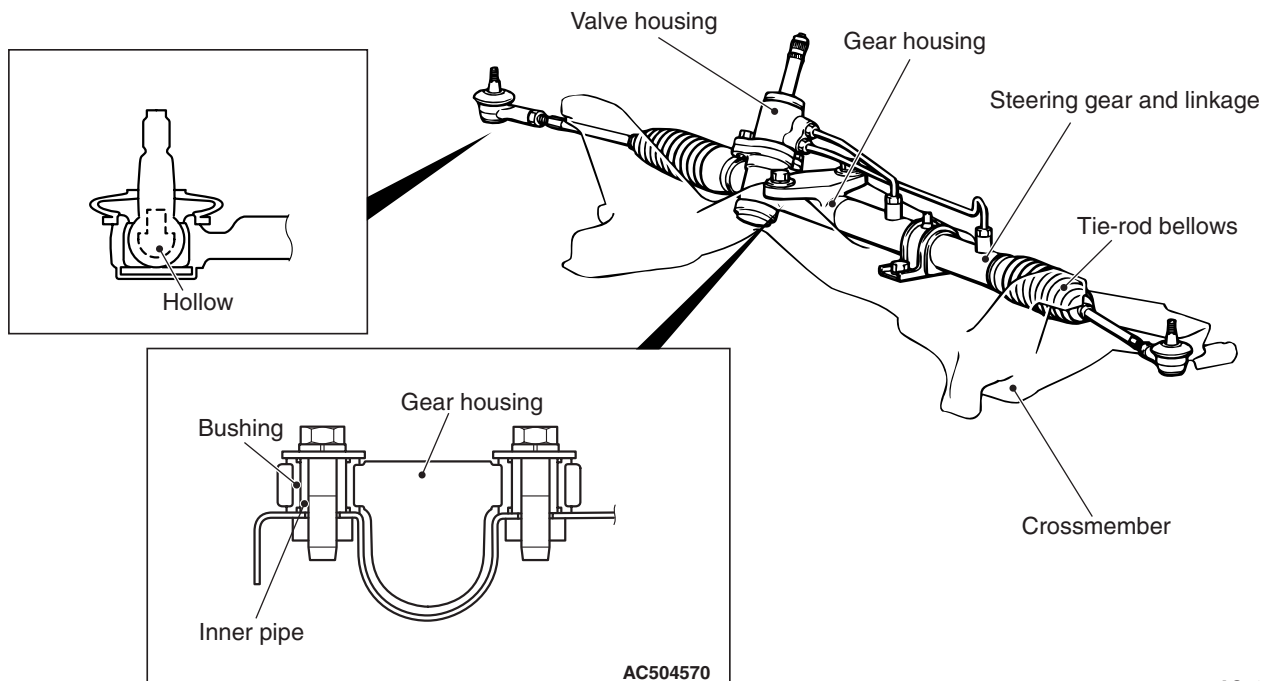
M2370004000210

The oil pump is a vane type with a fluid flow control system which functions so the steering wheel turning effort will be reduced at low engine speeds and it increased at higher speeds.

The oil pump is essentially the same as the conventional one in construction.

## STEERING GEAR

M2370003000325



AC504944 AB

- Using the following parts have contributed to save weight; an aluminium steering gear and linkage valve housing, a plastic tie-rod bellows, and the hollow-type tie-rod stud.
- The installation accuracy, rigidity and steering stability have been improved by using an eye bushing, which secures the steering gear to the crossmember.

## OIL RESERVOIR

M2370005000202

A plastic oil reservoir is used to reduce weight. It also allows the oil reservoir itself to be semi-transparent, and it has a scale (MAX and MIN lines) which lets you check the fluid level visually, making inspection much easier.

