
GROUP 21A

CLUTCH

CONTENTS

GENERAL INFORMATION	21A-2	CLUTCH PEDAL POSITION SWITCH CHECK	21A-3
SERVICE SPECIFICATIONS.....	21A-2	CLUTCH PEDAL.....	21A-4
LUBRICANTS	21A-2	REMOVAL AND INSTALLATION	21A-4
ON-VEHICLE SERVICE.....	21A-2	CLUTCH CONTROL.....	21A-6
CLUTCH PEDAL CHECK AND ADJUSTMENT	21A-2	REMOVAL AND INSTALLATION	21A-6
CLUTCH RELEASE CYLINDER BLEEDING	21A-3	INSPECTION.....	21A-7
		DISASSEMBLY AND REASSEMBLY	21A-7
		INSPECTION.....	21A-8

GENERAL INFORMATION

M1211000100267

The clutch is a dry single-disc, diaphragm type; hydraulic pressure is used for the clutch control. The clutch shares a brake fluid reservoir with the brake system.

SERVICE SPECIFICATIONS

M1211000300368

Item	Standard value
Clutch pedal height mm	201.8 – 205.8
Clutch pedal clevis pin play mm	1 – 3
Clutch pedal free play mm	4 – 13
Distance between the clutch pedal and the dash pad when the clutch pedal is released mm	105 or more

LUBRICANTS

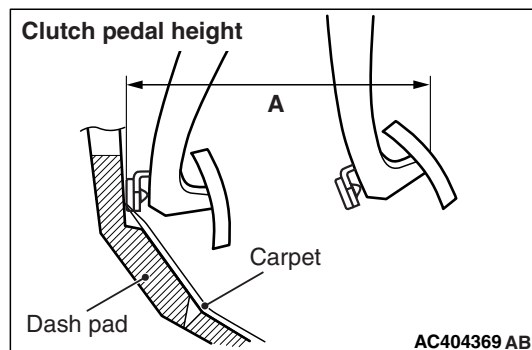
M1211000400213

Item	Specified lubricant	Quantity
Clutch fluid	Brake Fluid DOT 3 or DOT 4	As required
Pushrod assembly	Rubber grease	As required
Boot	Rubber grease	As required
Release cylinder push rod	MITSUBISHI genuine grease Part No.0101011	As required

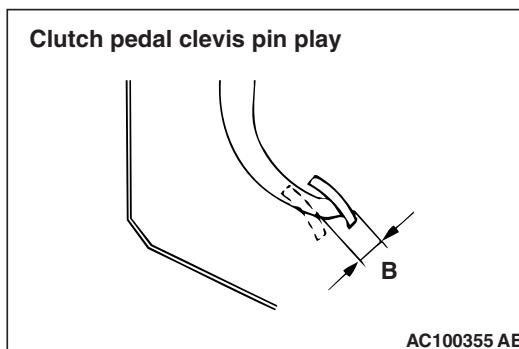
ON-VEHICLE SERVICE

CLUTCH PEDAL CHECK AND ADJUSTMENT

M1211000900423



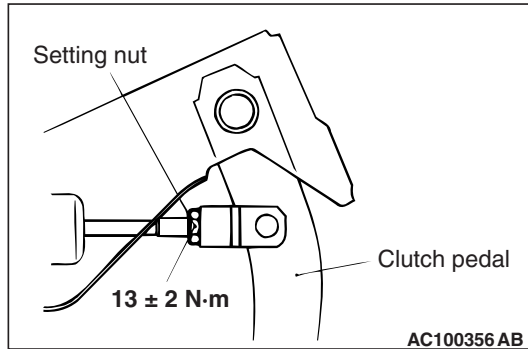
1. Measure the clutch pedal height.
Standard value (A): 201.8 – 205.8 mm



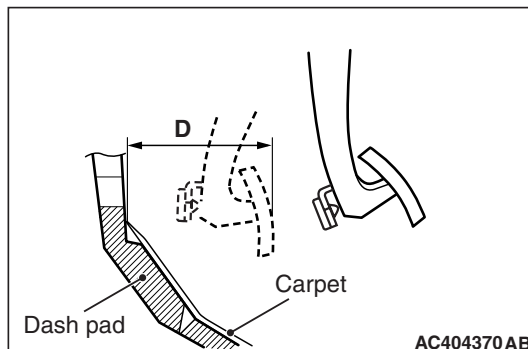
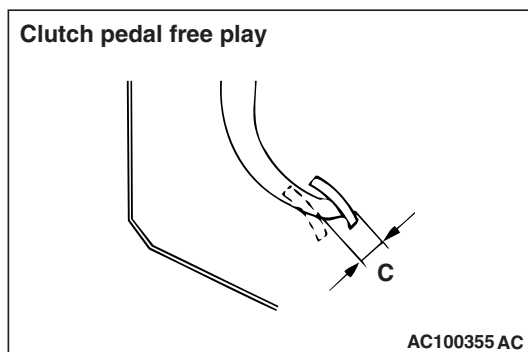
2. Measure the clutch pedal clevis pin play.
Standard value (B): 1 – 3 mm

CAUTION

Do not push in the master cylinder pushrod at this time, otherwise the clutch will not operate properly.



3. If the clutch pedal height and clutch pedal clevis pin play are not within the standard value, loosen the setting nut to adjust the clutch pedal height and clevis pin play to the standard value.



4. After completing the adjustments, confirm that the clutch pedal free play (measured at the face of the pedal pad) and the distance between the clutch pedal (the face of the pedal pad) and the dash pad when the clutch is disengaged are within the standard value ranges.

Standard value (C): 4 – 13 mm

Standard value (D): 105 mm or more

5. If the clutch pedal free play and the distance between the clutch pedal and the dash pad when the clutch is disengaged do not agree with the standard values, it is probably the result of either air in the hydraulic system or a faulty master cylinder, release cylinder or clutch. Bleed the air, or disassemble and inspect the master cylinder, release cylinder or clutch.

CLUTCH RELEASE CYLINDER BLEEDING

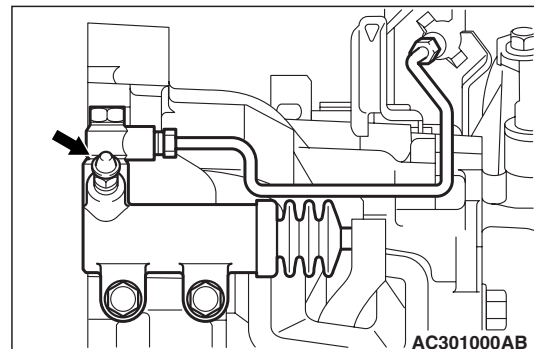
M1211001400294

CAUTION

Use the specified brake fluid. Do not mix brake fluids.

Specified fluid: Brake fluid DOT 3 or DOT 4

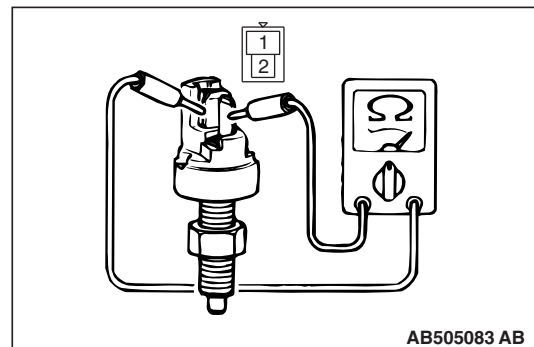
1. Remove the under cover.



2. Connect a hose with a bottle to the bleeder screw.
3. Open the bleed nipple.
4. Depress the clutch pedal slowly. Open the bleeder screw to let air and brake fluid out. Close the bleeder screw. Release the clutch pedal. Repeat until only brake fluid and no air comes out.
5. Check that the brake fluid reservoir level stays between "MAX" and "MIN" marks throughout the clutch bleeding process.

CLUTCH PEDAL POSITION SWITCH CHECK

M1211003100200



1. Adjust the clutch pedal.

2. Depress the clutch pedal, and check the continuity between the terminals.

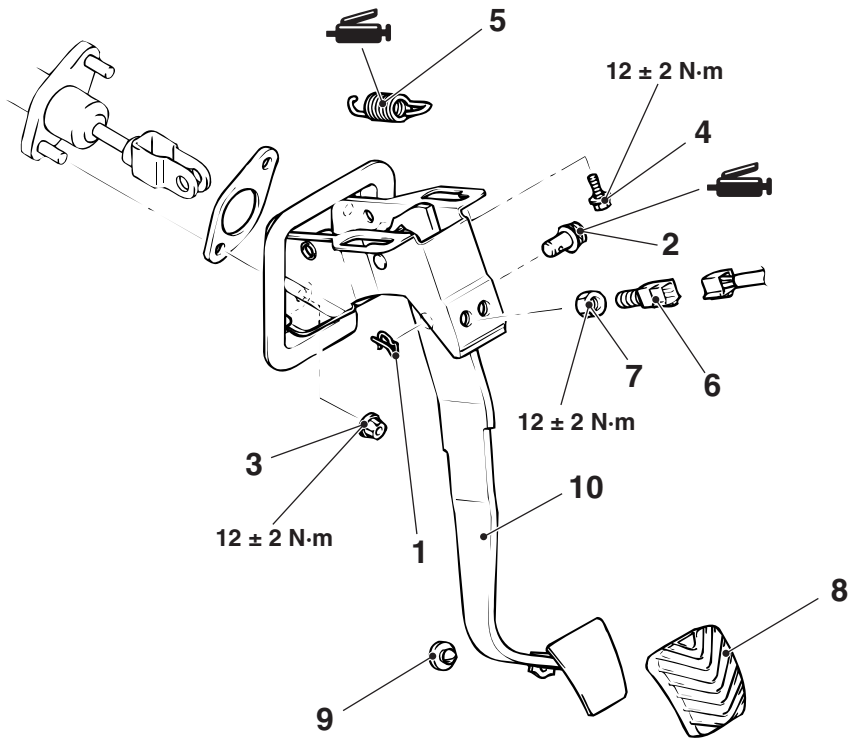
Measurement Condition	Continuity between terminals 1 and 2
Clutch pedal depressed	Less than 2 Ω
Clutch pedal not depressed	Open circuit

CLUTCH PEDAL

REMOVAL AND INSTALLATION

M1211001600351

Post-installation Operation
Clutch Pedal Adjustment (Refer to P.21A-2).



AC505089AB

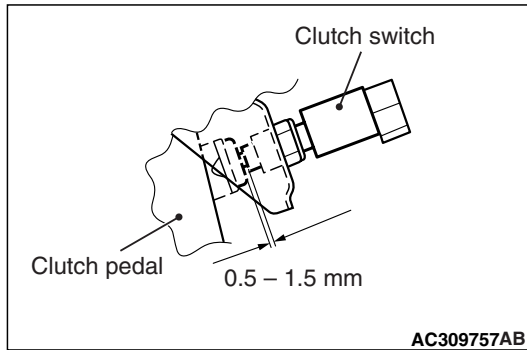
Removal steps

- Instrument panel under cover (Refer to GROUP 52A, Instrument panel P.52A-2).
- 1. Snap pin
- 2. Clevis pin
- 3. Clutch master cylinder mounting nut

Removal steps (Continued)

- >>A<<
- 4. Clutch pedal assembly mounting bolt
 - 5. Return spring
 - 6. Clutch pedal position switch
 - 7. Nut
 - 8. Pedal pad
 - 9. Pedal stopper
 - 10. Clutch pedal assembly

INSTALLATION SERVICE POINT
>>A<< CLUTCH PEDAL POSITION
SWITCH INSTALLATION



Install the clutch pedal position switch at the specified dimension when the clutch pedal is released.

CLUTCH CONTROL

REMOVAL AND INSTALLATION

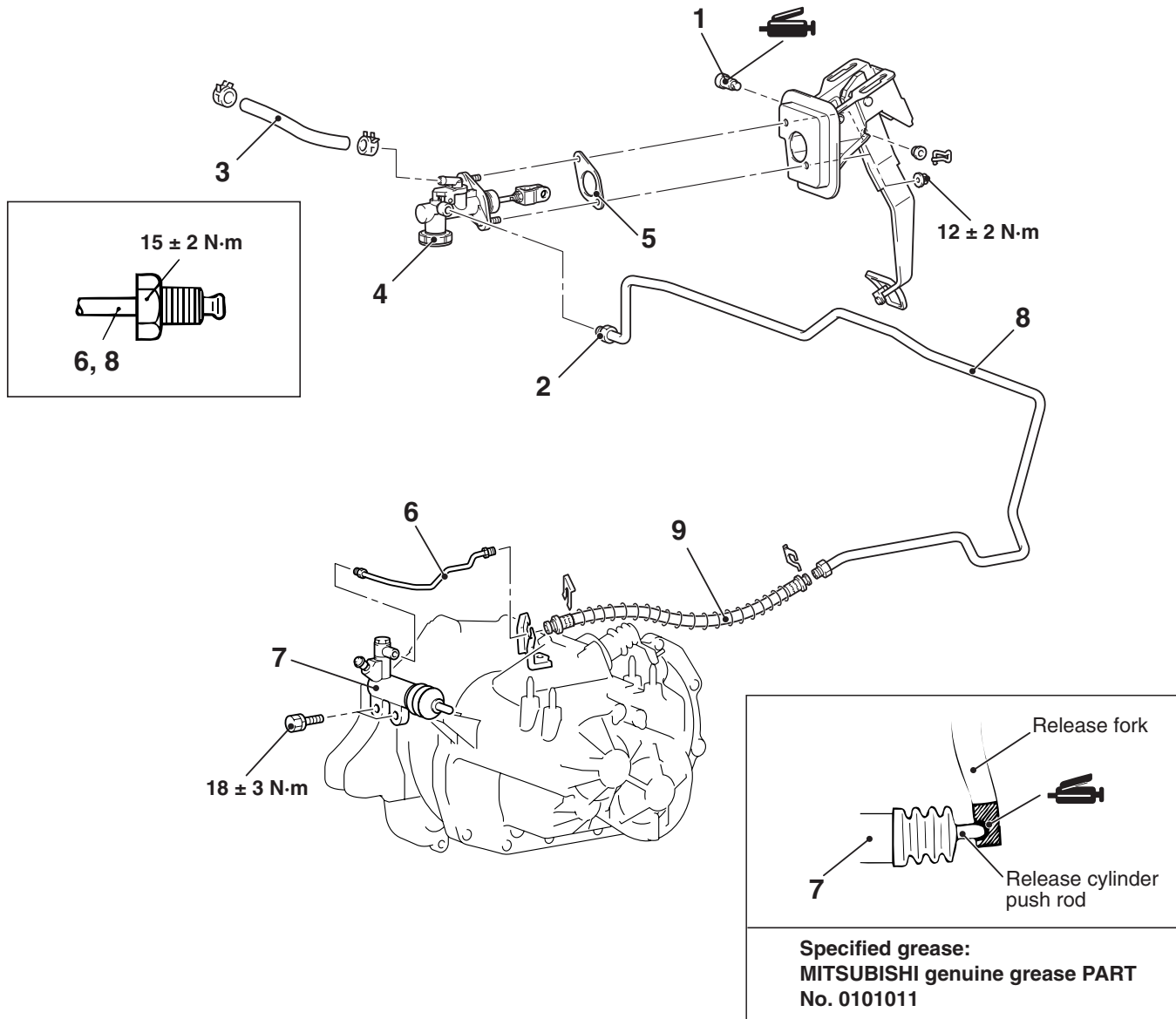
M1211001900404

Pre-removal Operation

- Clutch Fluid Draining
- Strut Tower Bar Removal <VR-X> (Refer to GROUP42, Strut Tower Bar [P.42-9](#)).

Post-installation Operation

- Strut Tower Bar Removal <VR-X> (Refer to GROUP42, Strut Tower Bar [P.42-9](#)).
- Clutch Fluid Supplying
- Clutch Line Bleeding (Refer to [P.21A-3](#)).
- Clutch Pedal Adjustment (Refer to [P.21A-2](#)).



AC505077 AB

Clutch master cylinder removal steps

1. Clevis pin assembly
2. Clutch pipe connection
3. Reservoir hose
4. Clutch master cylinder
5. Sealer

Clutch release cylinder removal steps

6. Clutch pipe
7. Clutch release cylinder

Clutch line removal steps

8. Clutch pipe
- Air cleaner (Refer to GROUP 15, Air Cleaner [P.15-3](#)).
9. Clutch hose

INSPECTION

M1211002000181

- Check the master cylinder or clutch hose for fluid leakage.
- Check the clutch hose or tube for cracks or clogging.

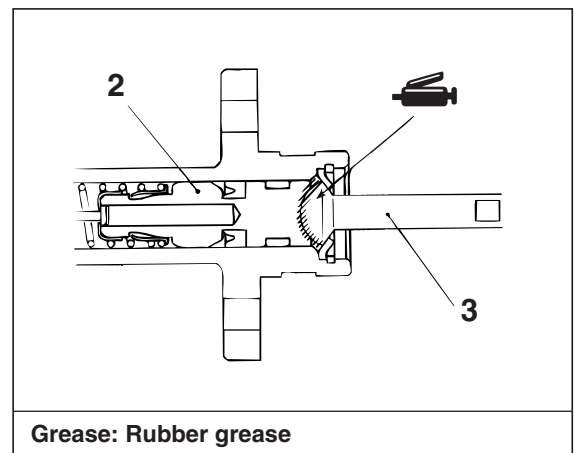
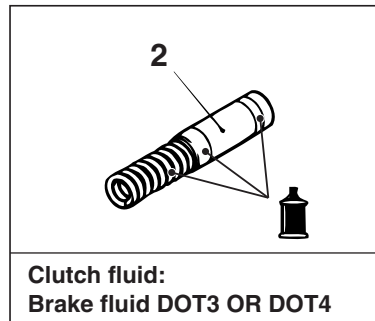
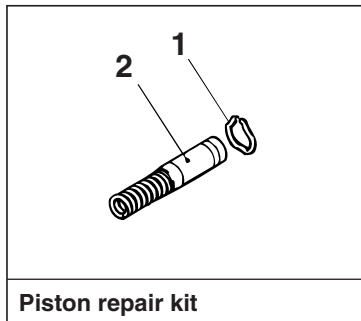
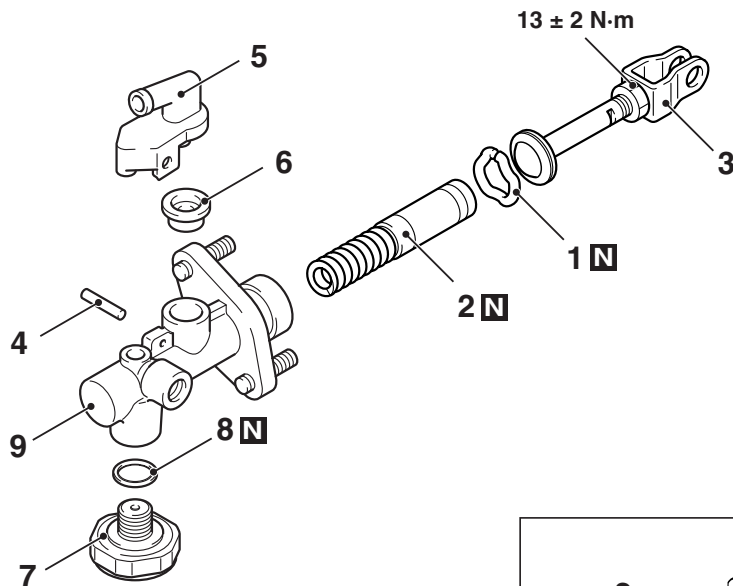
DISASSEMBLY AND REASSEMBLY

M1211002100326

CLUTCH MASTER CYLINDER

CAUTION

Do not disassemble the piston assembly.



AC505097 AB

Disassembly steps

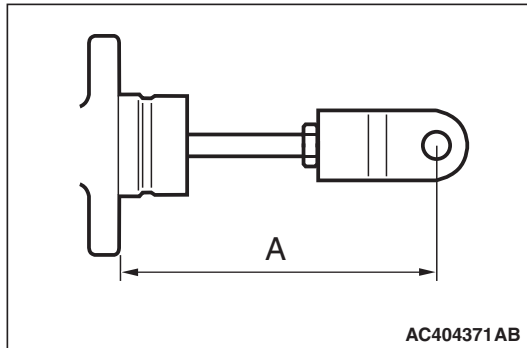
- >>A<<
1. Piston stopper ring
 2. Piston assembly
 3. Pushrod assembly
 4. Spring pin
 5. Nipple

Disassembly steps (Continued)

6. Seal
7. Damper assembly
8. Gasket
9. Master cylinder body

REASSEMBLY SERVICE POINT

>>A<< PUSHROD ASSEMBLY INSTALLATION



Set the length of the pushrod assembly to the dimension shown to make the adjustment of the clutch pedal easier.

Dimension (A): 105 ± 0.5 mm

INSPECTION

M1211002200174

- Check inside the cylinder body for rust and scars.
- Check the piston cup for wear and deformation.
- Check the piston for rust and scars.
- Check the pipe connection for clogging.