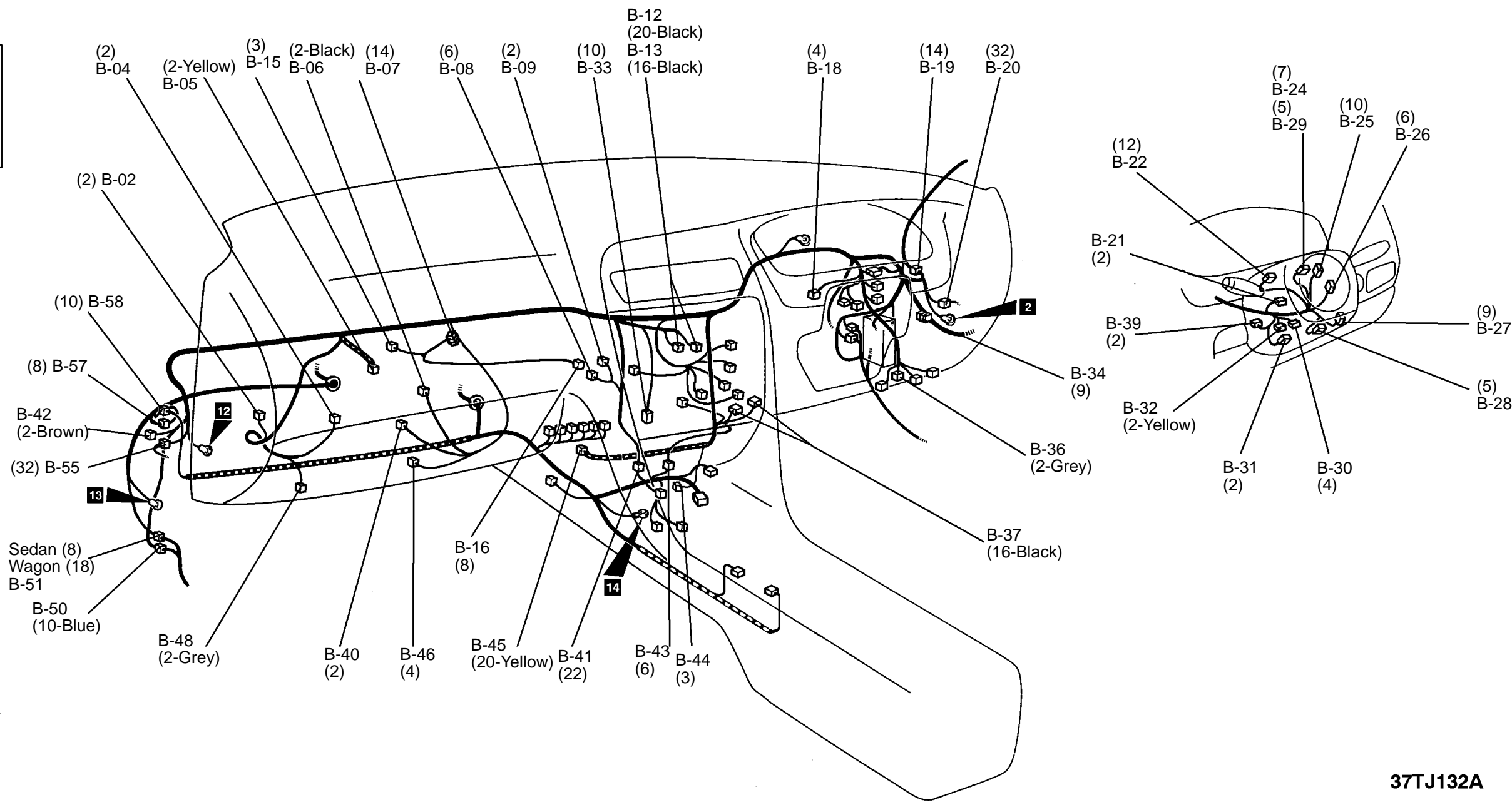


DASH PANEL

Connector symbol

**B** -01 thru -58



37TJ132A

- B-02 Inside and outside air switching damper motor
- B-04 Blower motor
- B-05 Air bag module (front passenger side)
- B-06 Fin thermo sensor
- B-07 A/C sub harness
- B-08 Air mixing damper motor/potentiometer
- B-09 Water temperature sensor (for A/C)
- B-12 A/C-ECU
- B-13 A/C-ECU
- B-15 Accumulator
- B-16 A/C Switch

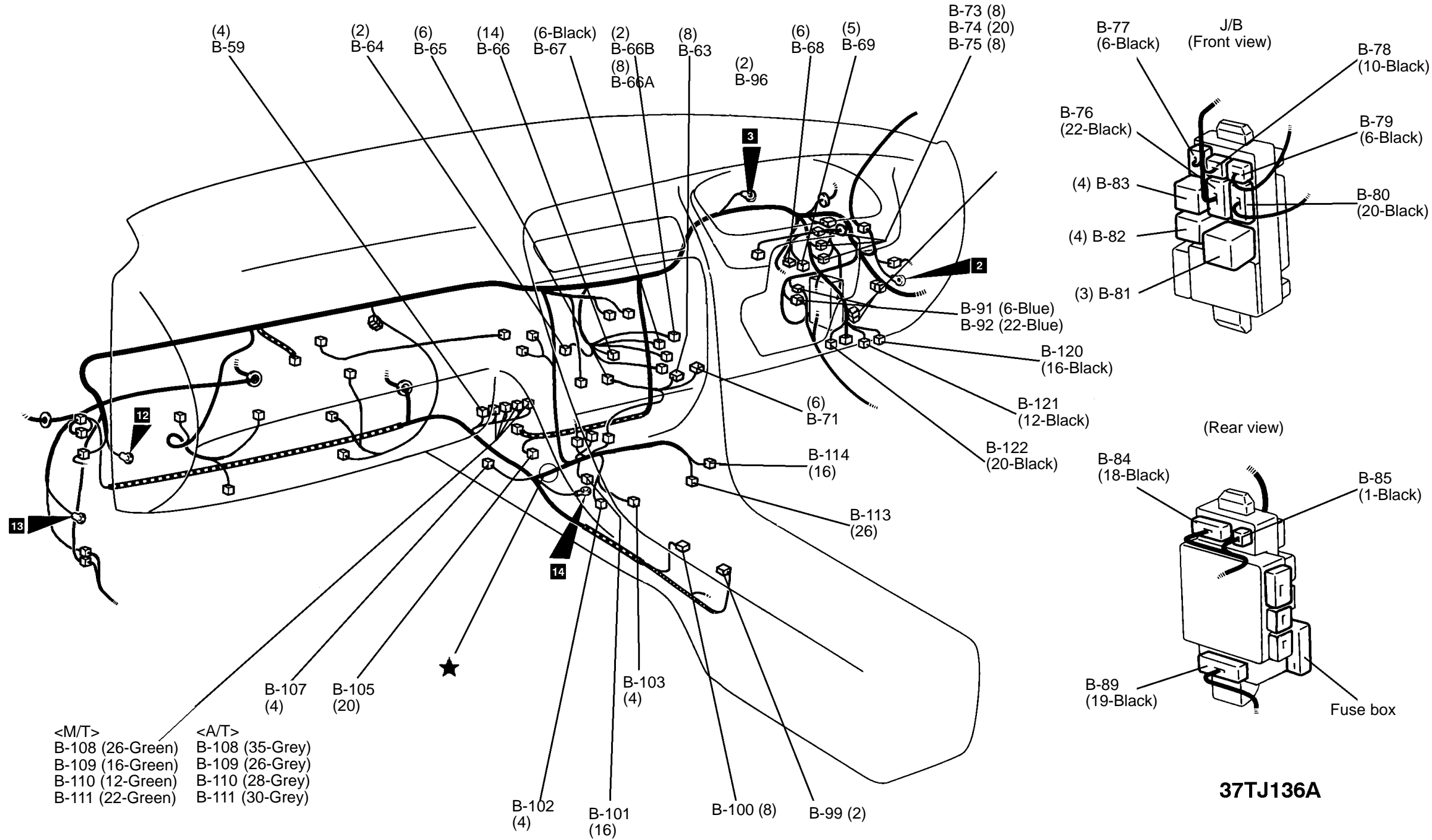
- B-18 Stop lamp switch
- B-19 Connection of dash and roof harness
- B-20 Connection of dash and front door harness (RH)
- B-21 Ignition key cylinder illumination lamp
- B-22 Column switch
- B-24 Slip ring
- B-25 Column switch
- B-26 Column switch
- B-27 Column switch
- B-28 Column switch (Steering angular velocity sensor)
- B-29 Slip ring (W/Out ABS)

- B-30 Clock spring
- B-31 Key ring antenna
- B-32 Air bag module (Driver)
- B-33 Hazard alarm relay
- B-34 Mirror Switch
- B-35 Cruise control switch
- B-36 Foot lamp (RH)
- B-37 Diagnostic connector
- B-40 Trunk lid switch
- B-41 Connection of dash and control harnesses
- B-42 Connection of ABS and dash harnesses

- B-43 Connection of dash and control harnesses
- B-44 Crash detect sensor
- B-45 SRS-ECU
- B-46 Power transistor
- B-48 Foot lamp (LH)
- B-50 Connection of dash and floor harnesses (LH)
- B-51 Connection of ABS and floor harnesses (LH)
- B-55 Connection of dash and front door harness (LH)
- B-57 Connection of ABS and front harnesses
- B-58 Connection of ABS and control harnesses

DASH PANEL

Connector  
symbol  
**B**  
-59  
thru  
-122



B-59 A/T control relay  
B-63 Blower switch  
B-64 Illumination  
B-65 Mode selector damper motor/potentiometer  
B-66 Radio and tape player  
B-66A Radio and tape player  
B-66B Radio and tape player  
B-67 Radio and tape player  
B-68 Ignition switch  
B-69 Key reminder switch  
B-71 Rear defogger switch  
B-73 Connection of front and dash harnesses

B-74 Connection of front and dash harnesses  
B-75 Connection of front and dash harnesses  
B-76 Connection of dash harness and J/B  
B-77 Connection of dash harness and J/B  
B-78 Connection of dash harness and J/B  
B-79 Connection of roof harness and J/B  
B-80 Connection of instrument panel harness and J/B  
B-81 Turn/hazard flasher unit  
B-82 Defogger relay  
B-83 Blower relay  
B-84 Connection of front harness and J/B  
B-85 Connection of front harness and J/B

B-89 Connection of floor harness (RH) and J/B  
B-91 Connection of floor (RH) and dash harnesses  
B-92 Connection of floor (RH) and dash harnesses  
B-96 Clutch switch  
B-99 Position indicator lamp assembly (SPORTS)  
B-100 Manual control switch assembly  
B-101 Cruise ECU  
B-102 Fuel pump relay  
B-103 Engine control relay  
B-105 Connection of instrument panel and control harness  
B-107 O2 sensor

B-108 Engine-ECU <M/T> or engine and A/T-ECU <A/T>  
B-109 Engine-ECU <M/T> or engine and A/T-ECU <A/T>  
B-110 Engine-ECU <M/T> or engine and A/T-ECU <A/T>  
B-111 Engine-ECU <M/T>  
B-113 Traction control ECU  
B-114 Traction control ECU  
B-120 Body electronics module  
B-121 Body electronics module  
B-122 Body electronics module

Main  
Index

54  
Index

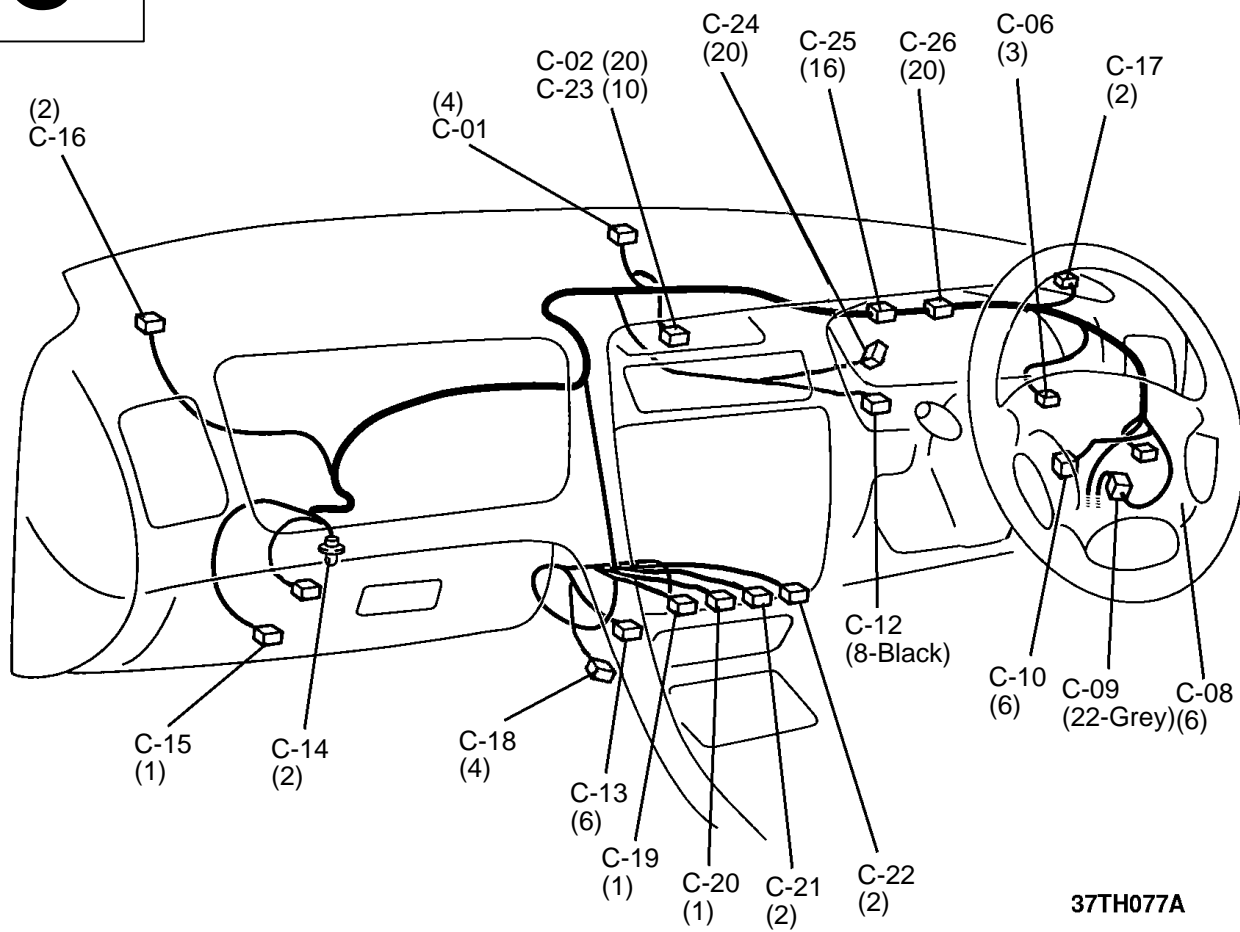
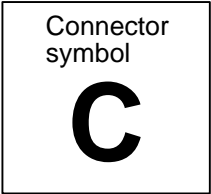
54B  
03/02

INSTRUMENT PANEL

Main  
Index

54  
Index

54B  
03/02



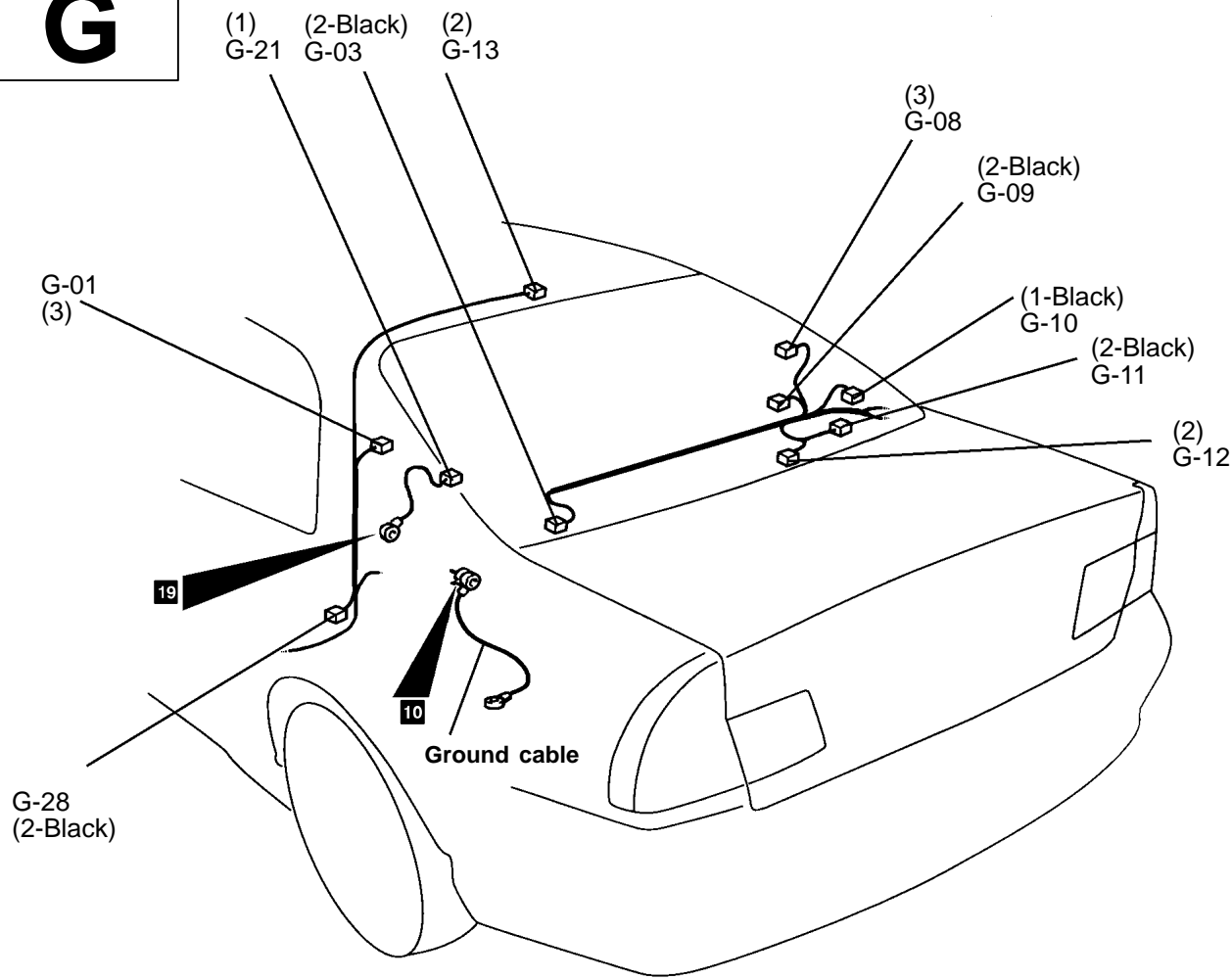
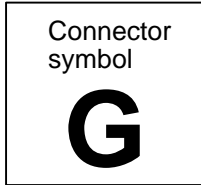
- |      |   |      |   |
|------|---|------|---|
| C-01 | Sunlight sensor                                   | C-16 | Front speaker (LH)                      |
| C-02 | Centre warning display <high contrast meter>      | C-17 | Front speaker (RH)                      |
| C-06 | Rheostat  | C-18 | Phone connection                        |
| C-08 | Traction control switch                           | C-19 | Cigarette lighter (positive)            |
| C-09 | Connection of instrument panel and dash harnesses | C-20 | Cigarette lighter (negative)            |
| C-10 | Connection of instrument panel and dash harnesses | C-21 | Ashtray lamp                            |
| C-12 | Centre message display switch                     | C-22 | Cigarette lighter lamp                  |
| C-13 | Ashtray (Verada)                                  | C-23 | Centre warning display <standard meter> |
| C-14 | Glove box lamp                                    | C-24 | Combination meter                       |
| C-15 | Glove box lamp switch                             | C-25 | Combination meter                       |
|      |   | C-26 | Combination meter                       |

Main  
Index

54  
Index

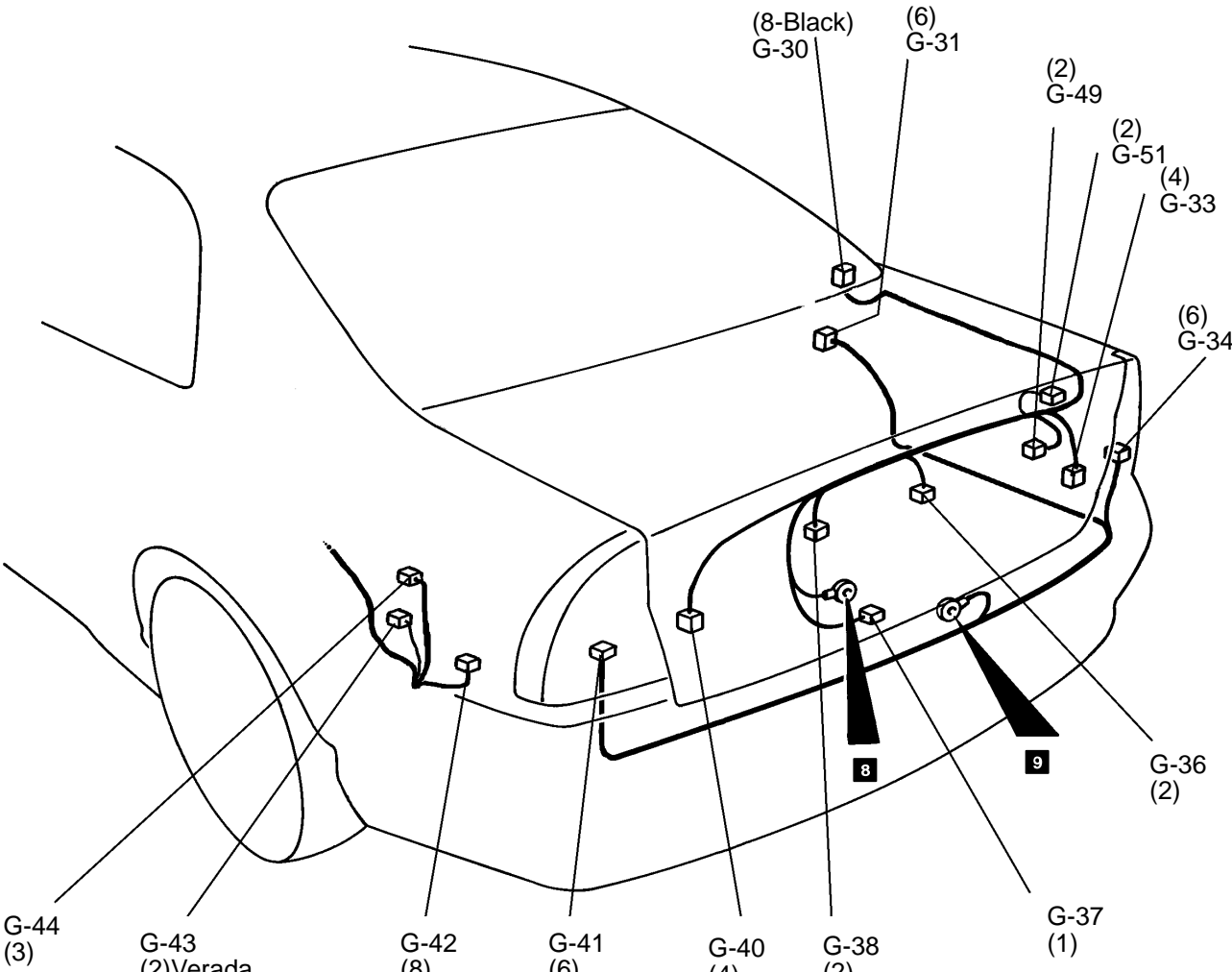
54B  
03/02

TRUNK ROOM



37TH075A

- |      |                         |      |                                   |
|------|-------------------------|------|-----------------------------------|
| G-01 | Rear personal lamp (LH) | G-11 | Rear speaker (RH)                 |
| G-03 | Rear speaker (LH)       | G-12 | Trunk room lamp                   |
| G-08 | Rear personal lamp (RH) | G-13 | High mount stop lamp (Rear Shelf) |
| G-09 | Rear door switch (RH)   | G-21 | Defogger earth cable              |
| G-10 | Defogger                | G-28 | Rear door switch (LH)             |



37TJ159A

- |      |   |      |  |
|------|---|------|--|
| G-30 | Connection of floor (RH) and rear lid harnesses   | G-40 | Rear lid lamp (LH)                           |
| G-31 | Connection of floor (RH) and trunk room harnesses | G-41 | Rear combination lamp (LH)                   |
| G-33 | Rear lid lamp (RH)                                | G-42 | Trunk lid and fuel tank door opener relay    |
| G-34 | Rear combination lamp (RH)                        | G-43 | Trunk lid and fuel tank door opener actuator |
| G-36 | License plate lamp (RH)                           | G-44 | Motor antenna                                |
| G-37 | Trunk room lamp switch                            | G-49 | Trunk key switch                             |
| G-38 | License plate lamp (LH)                           | G-51 | High mounted stop lamp (Rear spoiler)        |

Main  
Index

54  
Index

54B  
03/02