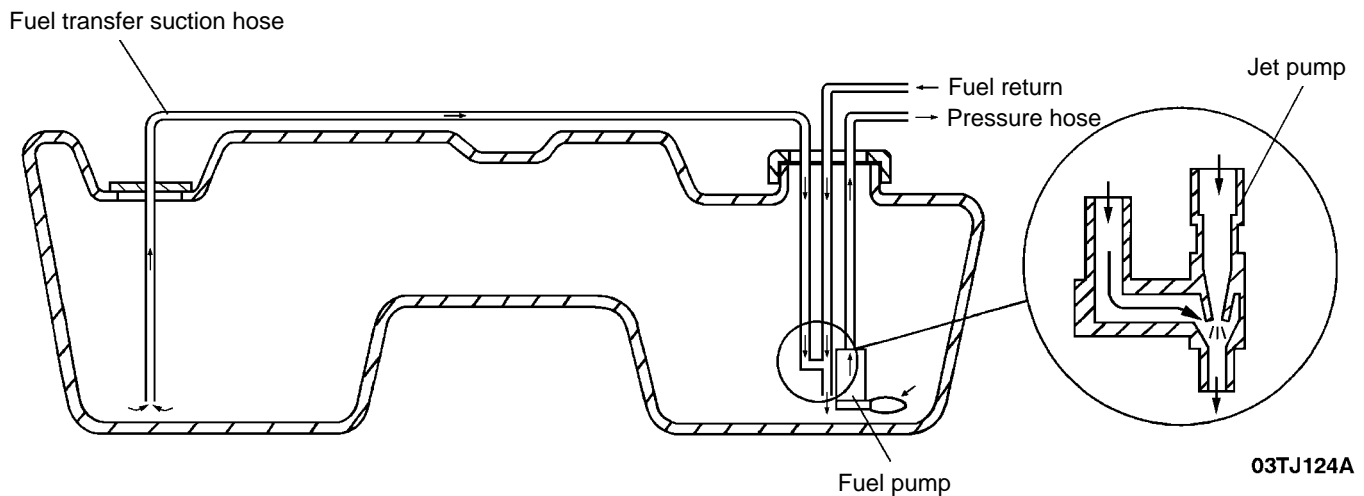


# FUEL TANK

## GENERAL INFORMATION

1. A cable-type accelerator mechanism and suspended-type pedal have been adopted.
2. The fuel tank is a saddle type to allow for the drive control system. It is of plastic construction, and located underneath the rear passenger seat floor.
3. The fuel tank is equipped with a valve assembly (roll-over valve). It prevents fuel from leaking out of the tank if the vehicle rolls over.
4. The fuel tank is equipped with a fuel cut-off valve. It prevents fuel from leaking out of the fuel tank when the fuel filler cap is opened and when fuel is being supplied.



Items	Specifications
Fuel tank capacity (litres)	70
Fuel pump type	Electrical, in-tank type

# FUEL TANK <AWD>

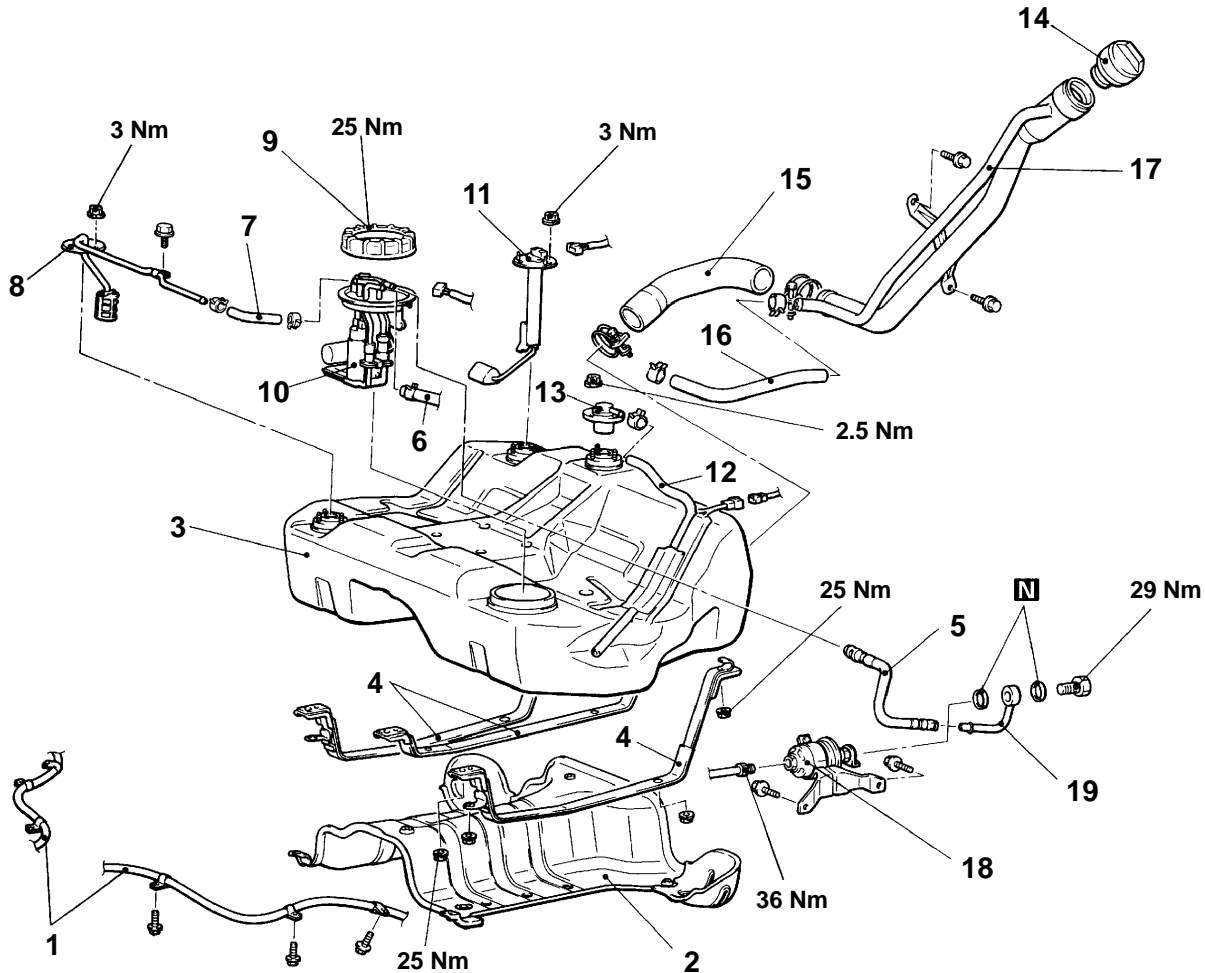
## REMOVAL AND INSTALLATION

### Pre-removal Operation

- (1) Reduce the inner line and hose pressure (Refer to Group 13A)
- (3) Remove Centre Exhaust Pipe (Refer to Group 15)
- (4) Remove Propeller Shaft (Group 25)

### Post-installation Operation

- (1) Refuel Tank
- (2) Check for Fuel Leakage
- (4) Install Propeller Shaft (Refer to Group 25)
- (3) Install Centre Exhaust Pipe (Refer to Group 15)



03P0013

### Removal steps

1. Parking brake cable connection
2. Protector
3. Fuel tank
4. Band
5. Pressure hose
6. Return hose
7. Suction hose
8. Pipe assembly
9. Cap
10. Fuel gauge unit/pump assembly
11. Fuel gauge unit assembly
12. Vapour hose

13. Valve assembly
14. Fuel filler cap
15. Filler hose
16. Vapour hose
17. Fuel filler neck
18. Fuel filter assembly
19. Fuel pipe

### NOTE

When replacing the fuel gauge unit assembly only, it is possible to work from the service holes underneath the rear seat cushion without having to remove the fuel tank. (Refer On Vehicle Service.)

Main  
Index

13  
Index

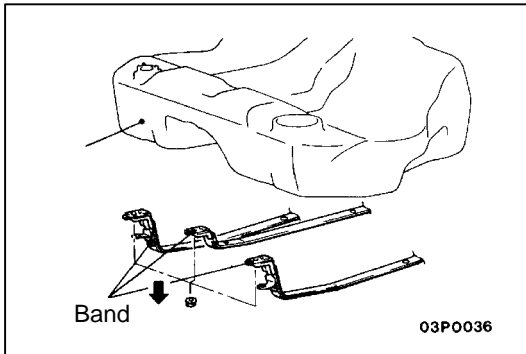
13F  
Index

13F  
AWD

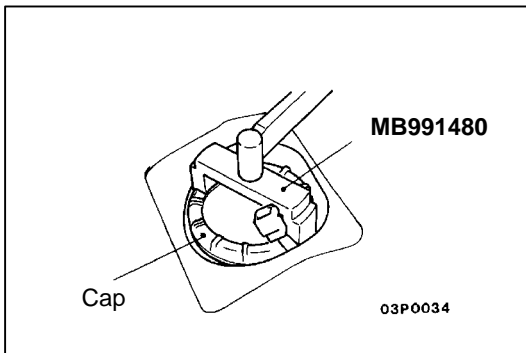
## REMOVAL SERVICE POINTS

### ◀A▶ FUEL TANK

1. Disconnect the band front, and lower the front part of the band so that the fuel tank can be removed.



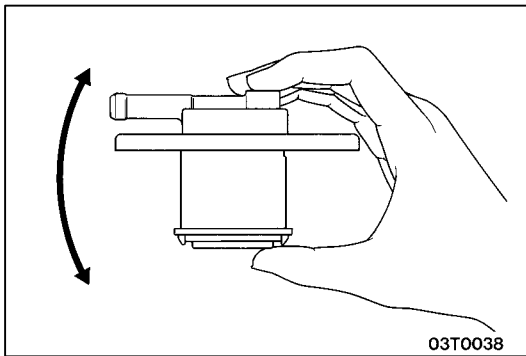
### ◀B▶ REMOVING CAP



## INSPECTION

### FUEL CUT OFF VALVE CHECK

If the sound of the float valve moving (knocking sound) can be heard when the valve assembly is gently shaken up and down, then the valve is okay.



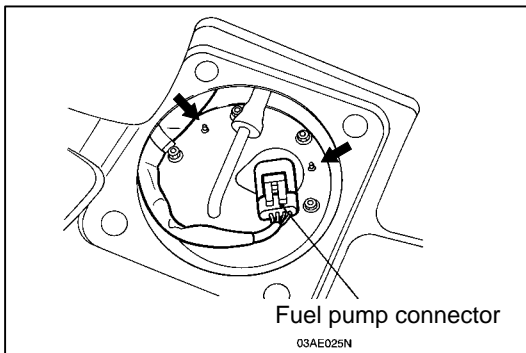
## FUEL GAUGE UNIT AND PUMP ASSEMBLY REPLACEMENT

1. Remove the rear seat cushion.  
(Refer [Rear seat Removal and Installation](#).)
2. Remove the cover plate.
3. Disconnect the connector from the fuel gauge unit and pump assembly, and then remove the fuel gauge unit.
4. When installing the fuel gauge unit and pump assembly, tilt the float at the end to the left and insert into the fuel tank.

### NOTE

As there is a reservoir inside the fuel tank, if the fuel gauge unit and pump assembly is tilted to the right and inserted, the fuel gauge unit and pump assembly will touch the reservoir.

5. Align the packing positioning projections (locations indicated by arrows) with the holes in the fuel gauge unit and pump assembly.



### FUEL GAUGE UNIT CHECK

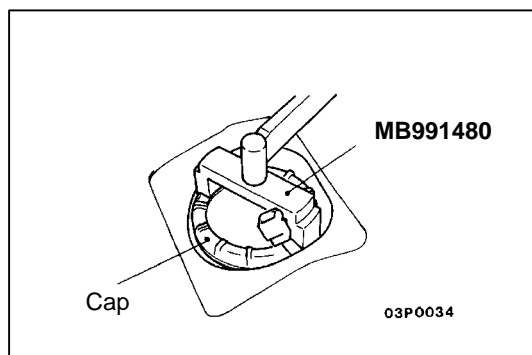
Refer [Fuel gauge check procedure](#).

Main  
Index

13  
Index

13F  
Index

13F  
AWD



### INSTALLATION SERVICE POINT

#### ▶A◀CAP INSTALLATION

1. Tighten the cap to the specified torque using the special tool.

# FUEL FILTER

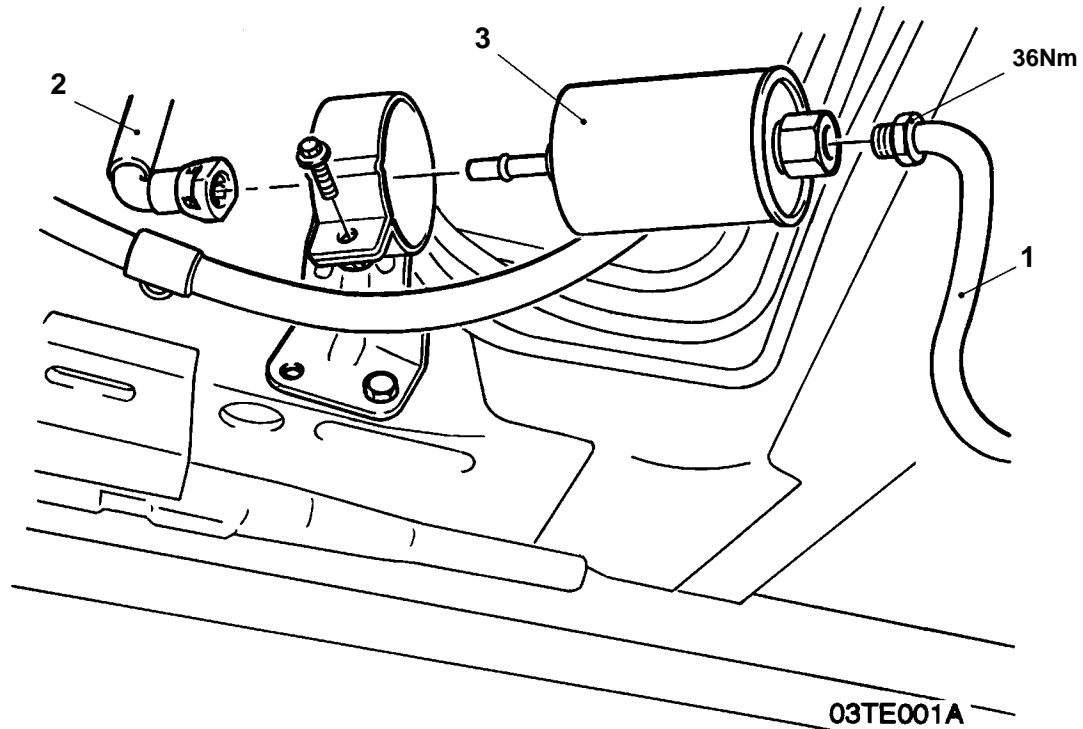
## REMOVAL AND INSTALLATION

**Pre-removal Operation**

Reduce the Inner Pressure of Fuel Line and Hose.  
(Refer [On Vehicle Service.](#))

**Post-installation Operation**

Checking for Fuel Leaks

**Removal steps**

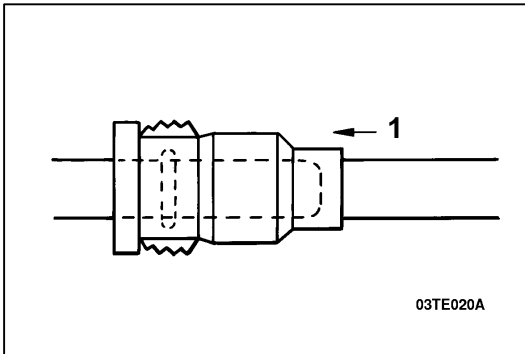
1. Fuel pipe
2. Pressure hose
3. Fuel filter

[Main Index](#)[13 Index](#)[13F Index](#)[13F AWD](#)

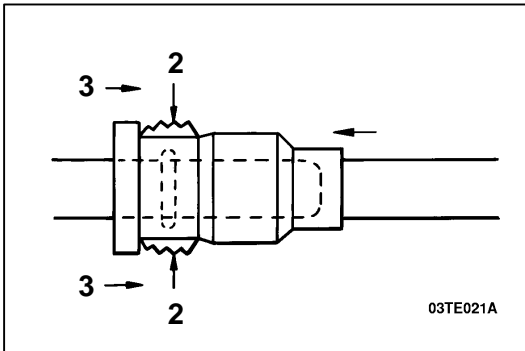
## REMOVAL SERVICE POINTS

### ◀A▶ PRESSURE PIPE

1. Push the connector body gently in the direction shown in the illustration.



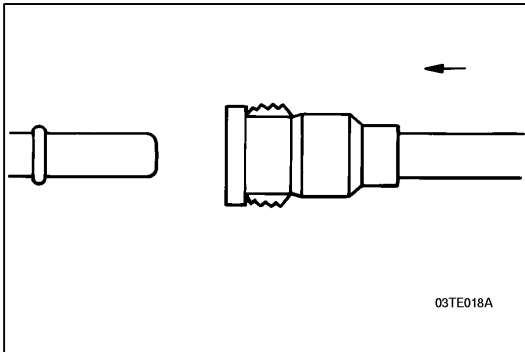
2. Grip the removal tabs at each side
3. Push in the direction of removal.



## INSTALLATION SERVICE POINTS

### ▶A◀ PRESSURE PIPE

1. Push the connector over the pipe until the connector stops with a click.



2. Push the connector gently in the direction of removal to ensure that the connector is installed correctly.

