

SPECIFICATIONS

GENERAL SPECIFICATIONS

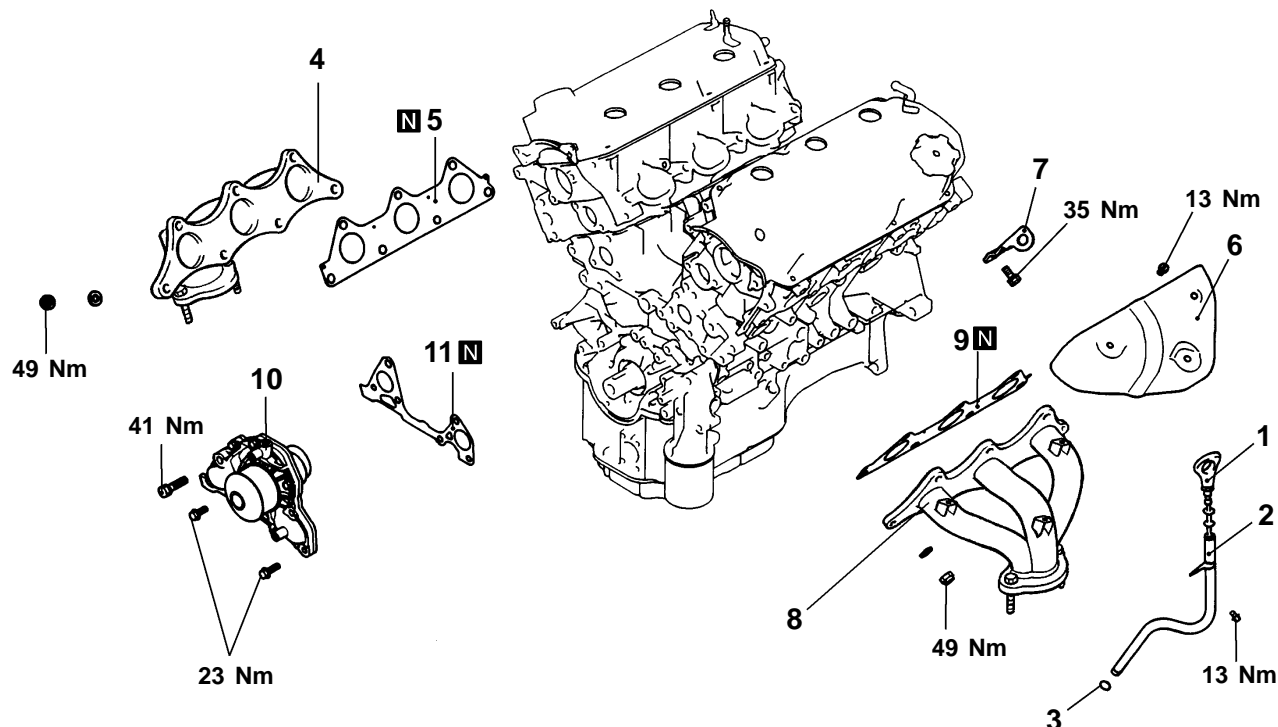
Descriptions			Specifications
Type			60° V, SOHC (per bank)
Number of cylinders			6
Combustion chamber			Pentroof type
Total displacement cc			3,497
Cylinder bore mm			93.0
Piston stroke mm			85.8
Valve timing	Intake valve	Opens (BTDC)	13°
		Closes (ABDC)	55°
	Exhaust valve	Opens (BBDC)	51°
		Closes (ATDC)	17°
Lubrication system			Pressure feed, full-flow filtration
Oil pump type			Trochoid type
Cooling system			Water-cooled forced circulation
Water pump type			Centrifugal impeller type
EGR type			Single type
Injector type and number			Electromagnetic, 6
Injector identification mark			CDH210
Throttle bore mm			65
Throttle position sensor			Variable resistor type
Closed throttle position switch			Movable contact type, within throttle position sensor

SERVICE SPECIFICATIONS

Items			Standard value	Limit
Rocker arms and camshaft				
Camshaft	Cam height mm	Intake	37.71	37.61
		Exhaust	37.14	37.04
Camshaft	Journal diameter mm		44.93 – 44.94	–
Cylinder head and valve				
Valve	Thickness of valve head (margin) mm	Intake	1.0	0.5
		Exhaust	1.2	0.7
	Stem diameter mm	Intake	6.0	–
		Exhaust	6.0	–
	Stem to guide clearance mm	Intake	0.02–0.05	0.10
		Exhaust	0.04–0.07	0.15
Valve face angle			45°–45.5°	–
Valve spring	Free height mm		51.0	50.0
	Load/installed height N/mm		267/44.2	–
	Out of squareness		2° or less	Max. 4°
Valve seat	Valve contact width mm		0.9–1.3	–
Valve guide	Inner diameter mm		6.0	–
	Outer diameter mm		11.0	–

EXHAUST MANIFOLD AND WATER PUMP

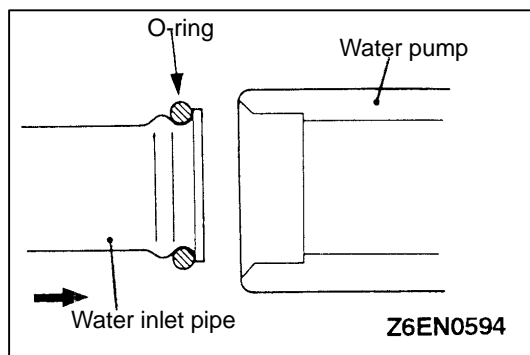
REMOVAL AND INSTALLATION

Main
Index11B
Index

01TJ071A

Removal steps

1. Oil level gauge
2. Oil level gauge guide
3. O-ring
4. Exhaust manifold, rear
- ▶B◀ 5. Exhaust manifold gasket, rear
6. Heat protector, front
7. Engine lift bracket
8. Exhaust manifold, front
- ▶B◀ 9. Exhaust manifold gasket, front
- ▶A◀ 10. Water pump
11. Water pump gasket



INSTALLATION SERVICE POINTS

►A◄ O-RING AND WATER PIPE INSTALLATION

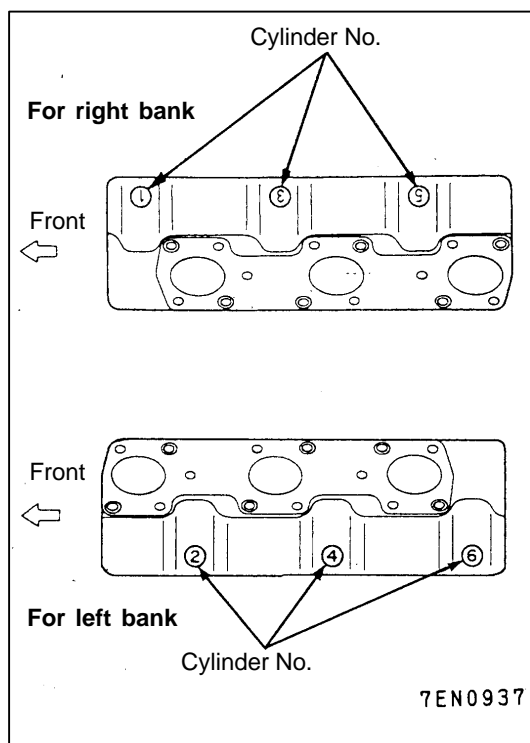
1. Wet the O-ring (with water) to facilitate assembly.

Caution

Keep the O-ring free of oil or grease.

Main
Index

11B
Index



►B◄ EXHAUST MANIFOLD GASKET INSTALLATION

1. Install gaskets with cylinder number 1, 3 and 5 embossed on their top side to the right bank and install those with cylinder number 2, 4 and 6 to the left bank.