

RACK AND PINION

REMOVAL AND INSTALLATION

Pre-removal Operation

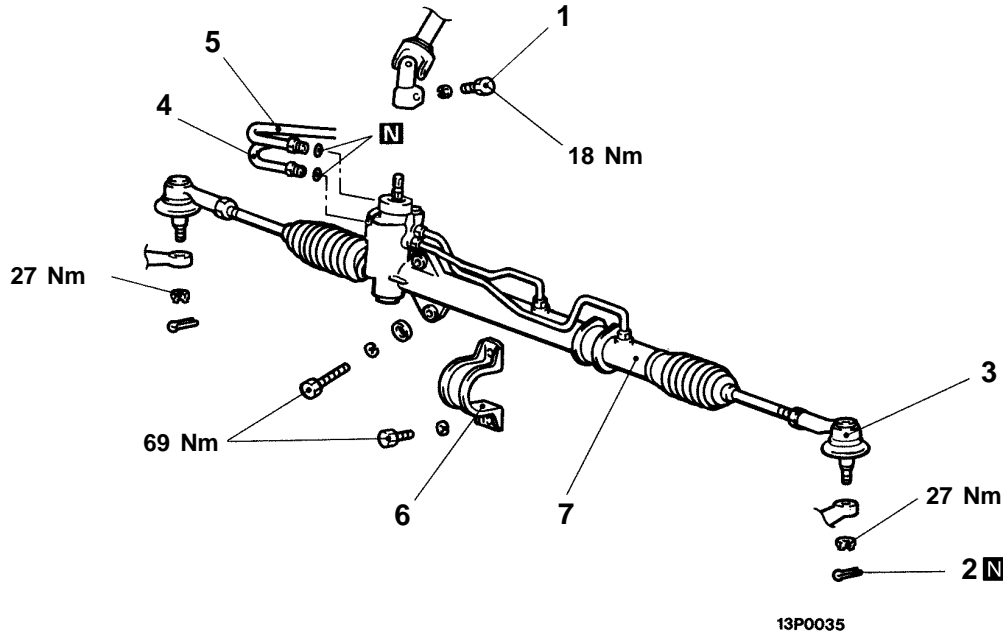
- Power Steering Fluid Draining (Refer [On vehicle service.](#))
- Disconnect the centre member (Refer [Group 32.](#))
- Disconnect the front exhaust pipe (Refer [Group 15.](#))
- Remove the lower RH strut mounting bolts (Refer [Group 33](#))
- Remove the rear roll stopper (Refer [Group 32](#))
- Loosen the LH side crossmember mounting nuts and bolts (Refer [Group 32](#))
- Remove the RH side crossmember mounting nuts and bolts to allow steering rack to slide out (Refer [Group 32](#))

CAUTION: SRS

For vehicles with SRS, before removal of steering gear box, refer [Group 52B](#) – General Information, centre front wheels and remove ignition key. Failure to do so may damage the SRS clock spring and render the SRS system inoperative, risking serious driver injury.

Post-installation Operation

- Install the RH side crossmember mounting nuts and bolts (Refer [Group 32](#))
- Tighten the LH side crossmember mounting nuts and bolts (Refer [Group 32](#))
- Install the lower RH strut mounting bolts (Refer [Group 33](#))
- Install the rear roll stopper (Refer [Group 32](#))
- Fit the front exhaust pipe (Refer [Group 15.](#))
- Fit the centre member (Refer [Group 32.](#))
- Power Steering Fluid Supplying (Refer [On vehicle service.](#))
- Power Steering Fluid Line Bleeding (Refer [On vehicle service.](#))
- Steering Wheel Position with Wheels Straight Ahead Checking
- Front Wheel Alignment Adjustment (Refer [Group 33A.](#))



Removal steps

1. Joint assembly and gear box connecting bolt
2. Cotter pin
3. Connection for tie-rod end and knuckle

4. Pressure pipe
5. Return pipe
6. Clamp
7. Steering gear and linkage

