

Main  
Index

54  
Index

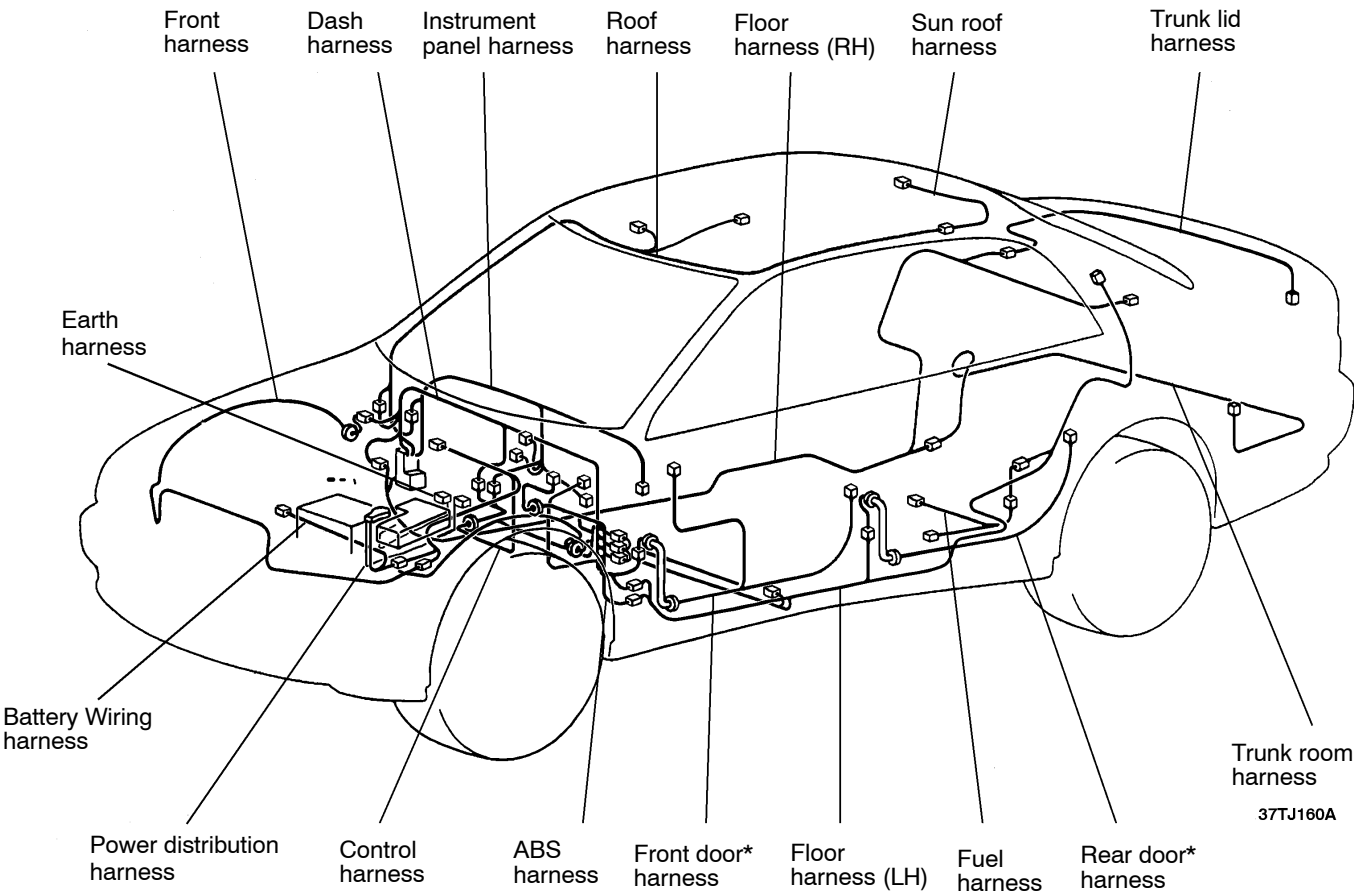
54B  
Index

OVERALL WIRING DIAGRAM

Main  
Index

54  
Index

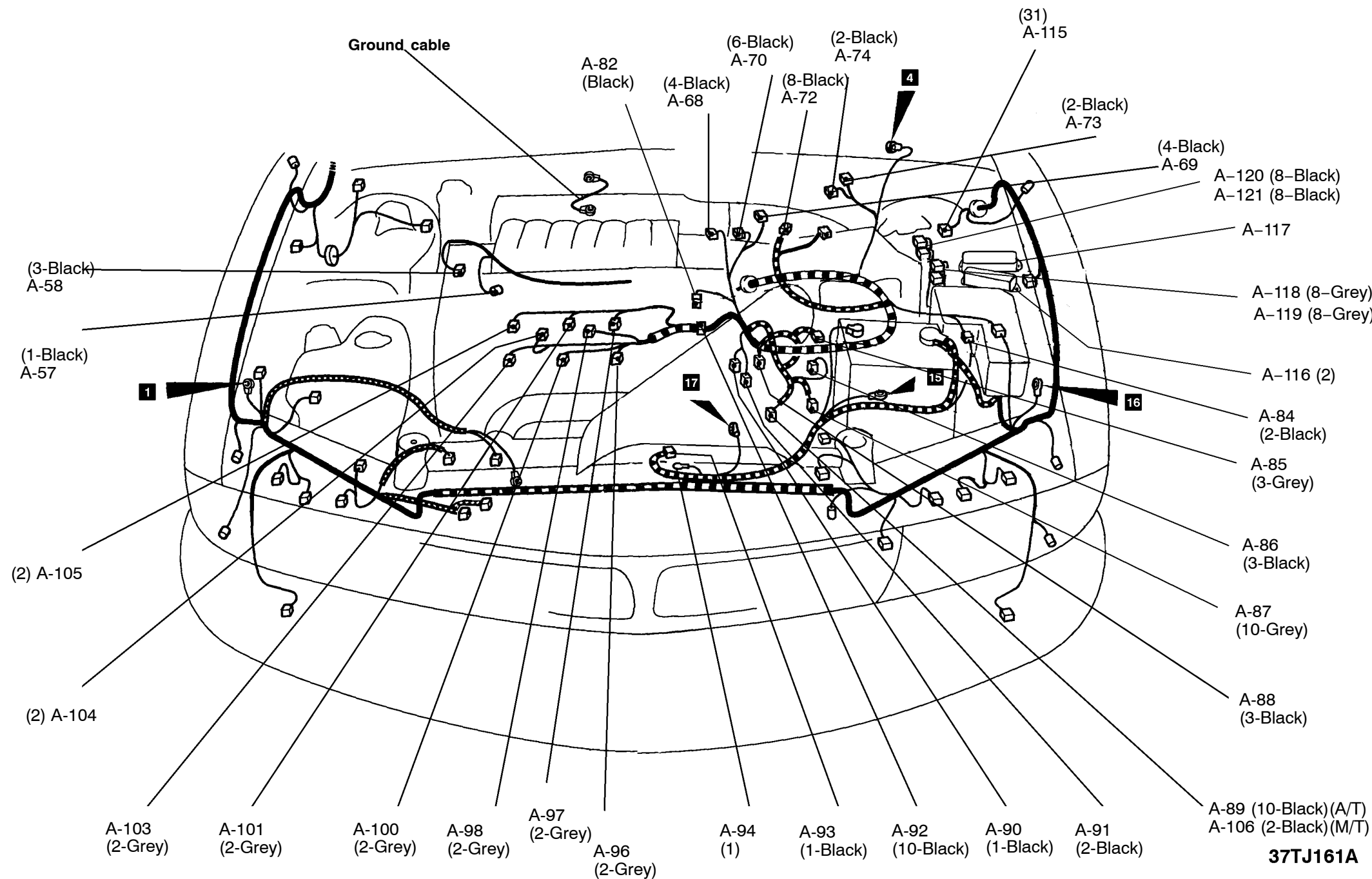
54B  
Index



NOTE  
(1) This illustration shows only the major wiring harness.  
(2) The \* symbol indicates also equipped at the right side.

ENGINE COMPARTMENT

Connector  
symbol  
**A** -57  
thru  
-124



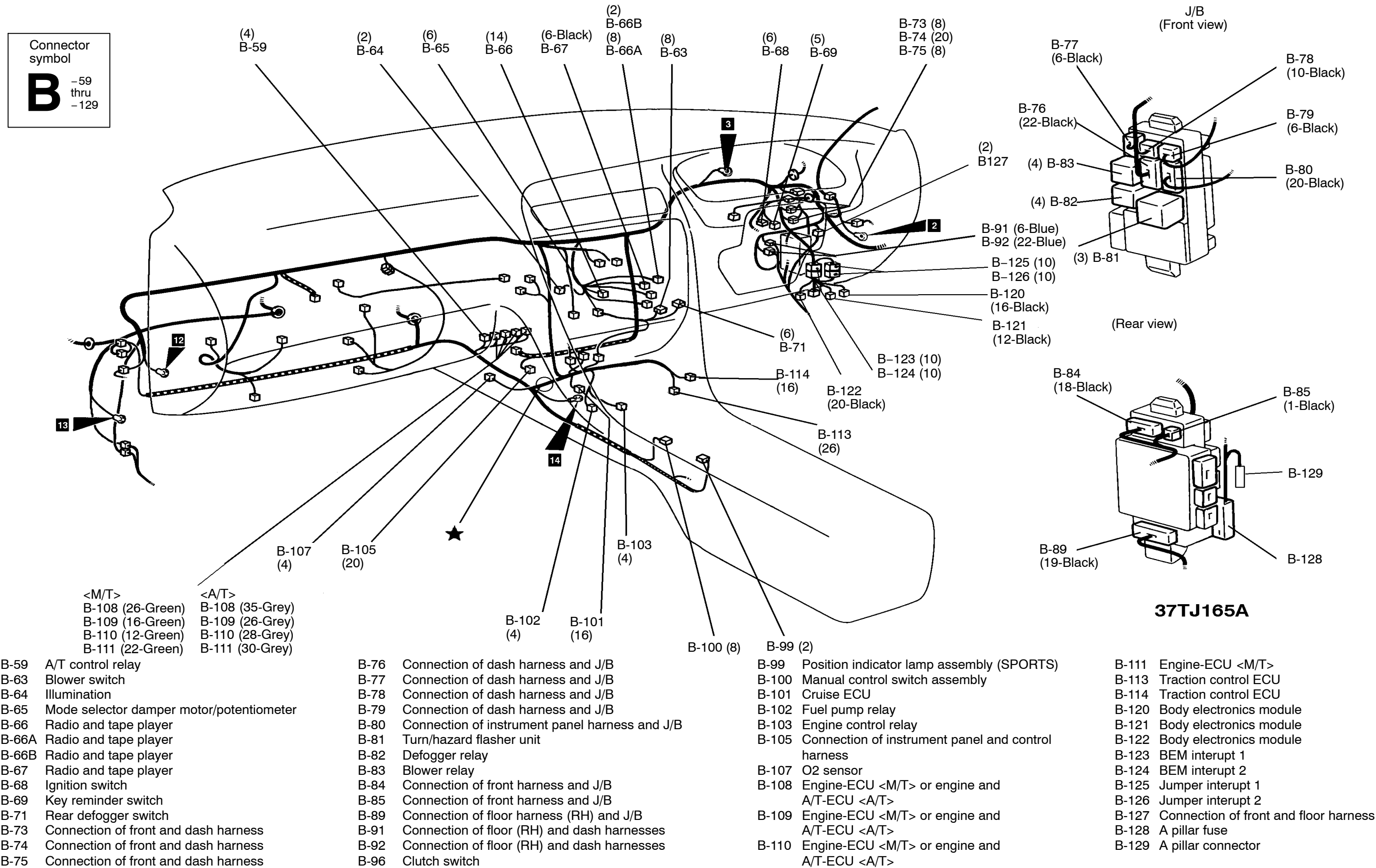
A-57 Power steering oil pressure switch  
A-58 Crank angle sensor  
A-68 Throttle position sensor  
A-69 Accelerator position sensor  
A-70 Idle speed control servo  
A-72 Air flow sensor  
A-73 Vacuum solenoid valve  
A-74 Vent solenoid valve  
A-82 Distributor assembly  
A-84 Connection of control harness and battery harness

A-85 Output shaft speed sensor  
A-86 Input shaft speed sensor  
A-87 A/T control solenoid valve assembly  
A-88 Vehicle speed sensor  
A-89 Inhibitor switch (A/T)  
A-90 Water temperature guage unit  
A-91 Water temperature sensor  
A-92 Connection of control harness and injector harness  
A-93 Starter

A-94 Starter  
A-96 Injector (No.6)  
A-97 Injector (No.5)  
A-98 EGR solenoid valve  
A-100 Injector (No.4)  
A-101 Injector (No.3)  
A-103 Injector (No.2)  
A-104 Purge solenoid  
A-105 Injector (No.1)  
A-106 Back up lamp switch (M/T)

A-115 ABS-ECU  
A-116 Fusible Link Box  
A-117 Police Fuse Box  
A-118 Power connector (no 1)  
A-119 Power connector (no 2)  
A-120 Earth connector ( no1)  
A-121 Earth connector ( no2)  
A-124 Fuse Link connector

DASH PANEL



Main  
Index

54  
Index

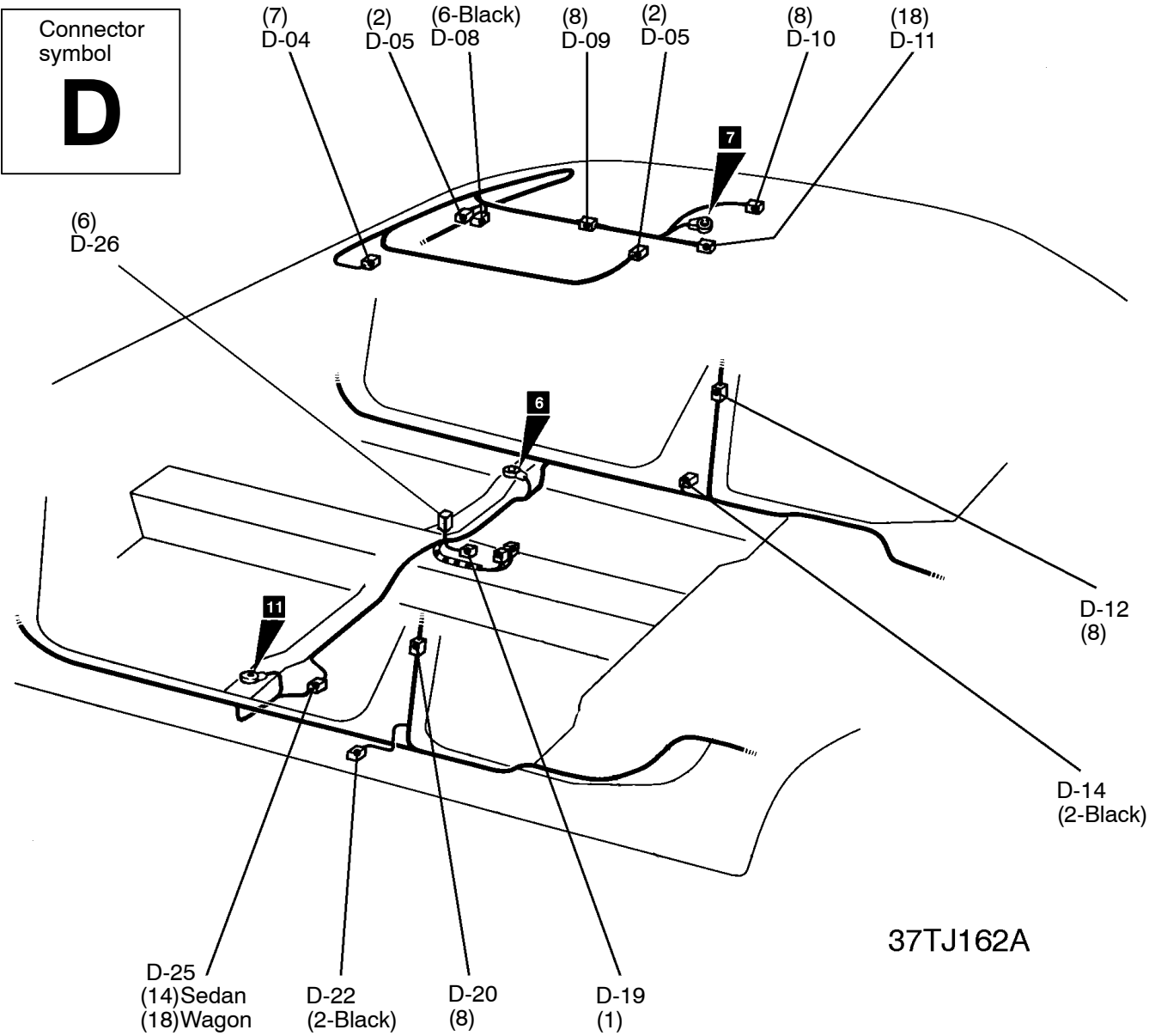
54B  
Index

ROOF & FLOOR

Main  
Index

54  
Index

54B  
Index



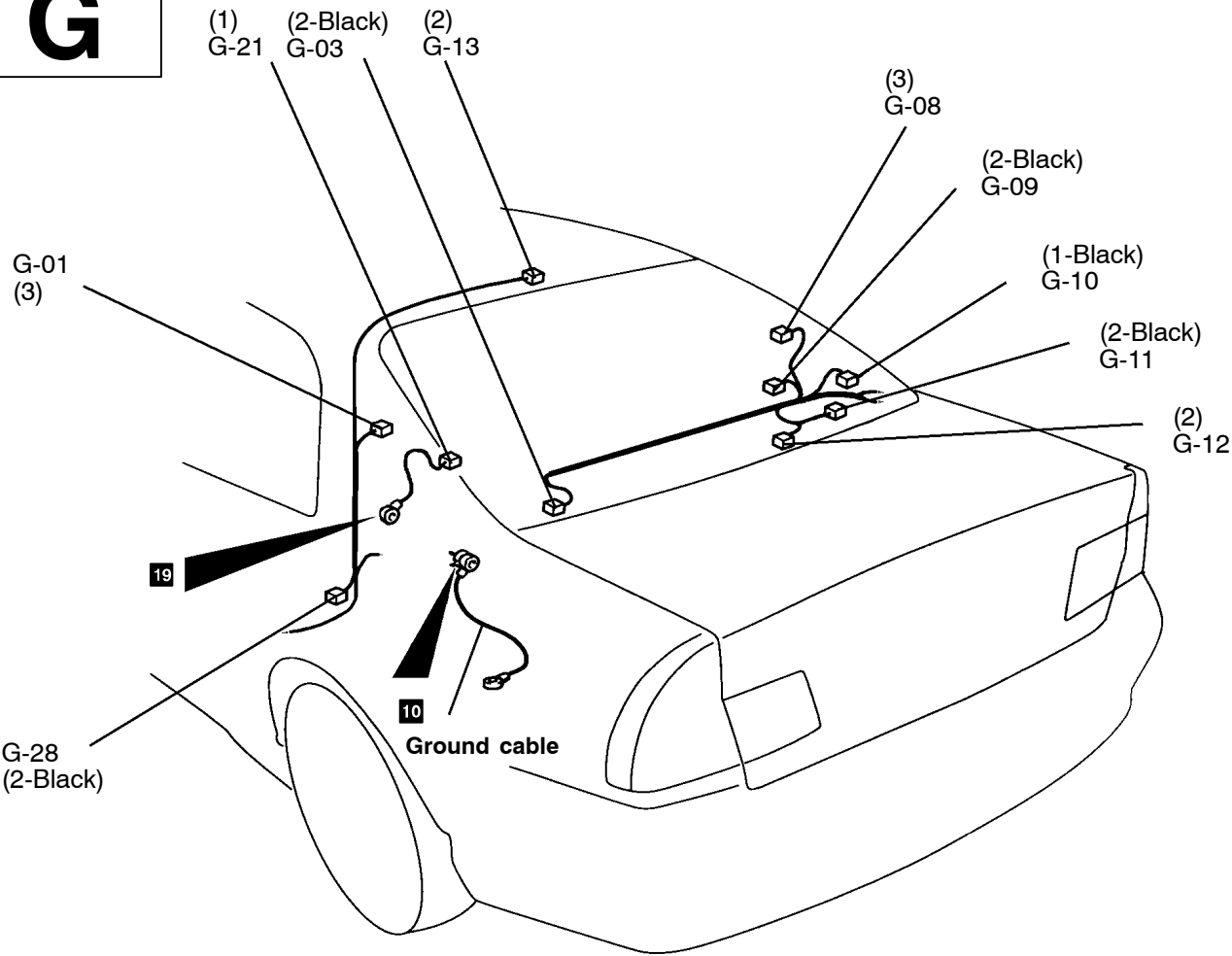
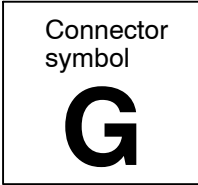
- |      |   |      |   |
|------|---|------|---|
| D-04 | EC Mirror   | D-14 | Front door switch (RH)                                |
| D-05 | Overhead lamp   | D-19 | Park brake switch                                     |
| D-06 | Map lamp  | D-20 | Connection of floor (LH) and rear door harnesses (LH) |
| D-08 | Sunroof switch  | D-22 | Front door switch (LH)                                |
| D-09 | Connection of roof and sunroof harnesses              | D-25 | Connection of floor (RH) and floor (LH) harnesses     |
| D-10 | Sunroof motor   | D-26 | Isolation switch connection (stealth mode switch)     |
| D-11 | Sunroof ECU   |      |   |
| D-12 | Connection of floor (RH) and rear door harnesses (RH) |      |   |

Main  
Index

54  
Index

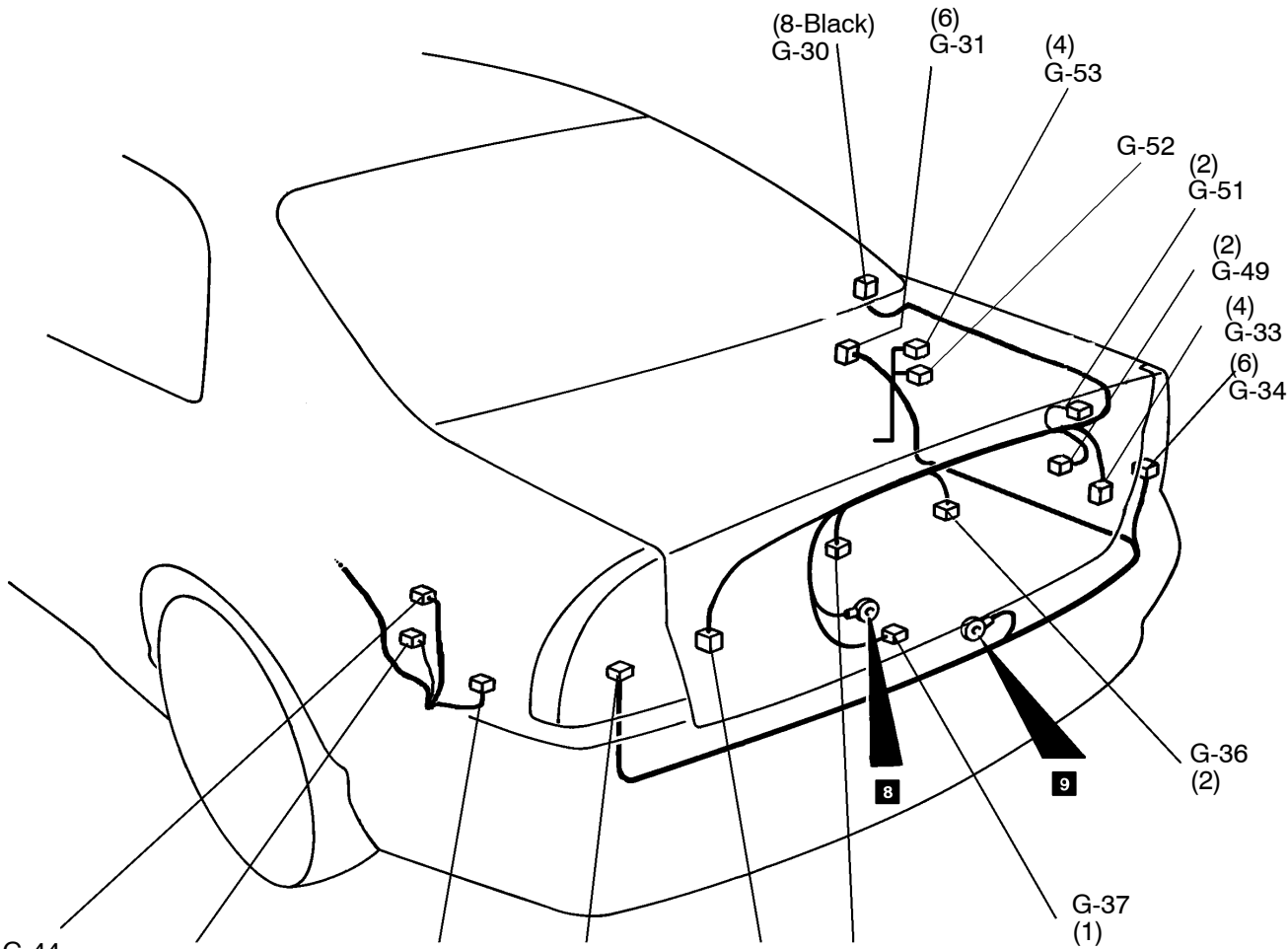
54B  
Index

TRUNK ROOM



37TJ163A

- |      |                         |      |                                   |
|------|-------------------------|------|-----------------------------------|
| G-01 | Rear personal lamp (LH) | G-12 | Trunk room lamp                   |
| G-03 | Rear speaker (LH)       | G-13 | High mount stop lamp (Rear Shelf) |
| G-08 | Rear personal lamp (RH) | G-21 | Defogger earth cable              |
| G-09 | Rear door switch (RH)   | G-28 | Rear door switch (LH)             |
| G-10 | Defogger                |      |                                   |
| G-11 | Rear speaker (RH)       |      |                                   |



37TJ166

- |      |   |      |  |
|------|---|------|--|
| G-30 | Connection of floor (RH) and rear lid harnesses   | G-41 | Rear combination lamp (LH)                   |
| G-31 | Connection of floor (RH) and trunk room harnesses | G-42 | Trunk lid and fuel tank door opener relay    |
| G-33 | Rear lid lamp (RH)                                | G-43 | Trunk lid and fuel tank door opener actuator |
| G-34 | Rear combination lamp (RH)                        | G-44 | Motor antenna                                |
| G-36 | License plate lamp (RH)                           | G-49 | Trunk key switch                             |
| G-37 | Trunk room lamp switch                            | G-51 | High mounted stop lamp (Rear spoiler)        |
| G-38 | License plate lamp (LH)                           | G-52 | Trunk Fuse                                   |
| G-40 | Rear lid lamp (LH)                                | G-53 | Radio connector                              |

Main  
Index

54  
Index

54B  
Index