

GROUP 1

BODY CONSTRUCTION

CONTENTS

BODY COMPONENTS..... 1-2

BODY MAIN CROSS-SECTIONAL VIEWS
..... 1-4

MAINTENANCE, SERVICEABILITY..... 1-6

BODY CONSTRUCTION CHARACTERISTICS
..... 1-8
FRONT BODY..... 1-8
SIDE BODY..... 1-15
REAR BODY..... 1-18
ROOF..... 1-19
UNDER BODY..... 1-20
DOOR..... 1-24

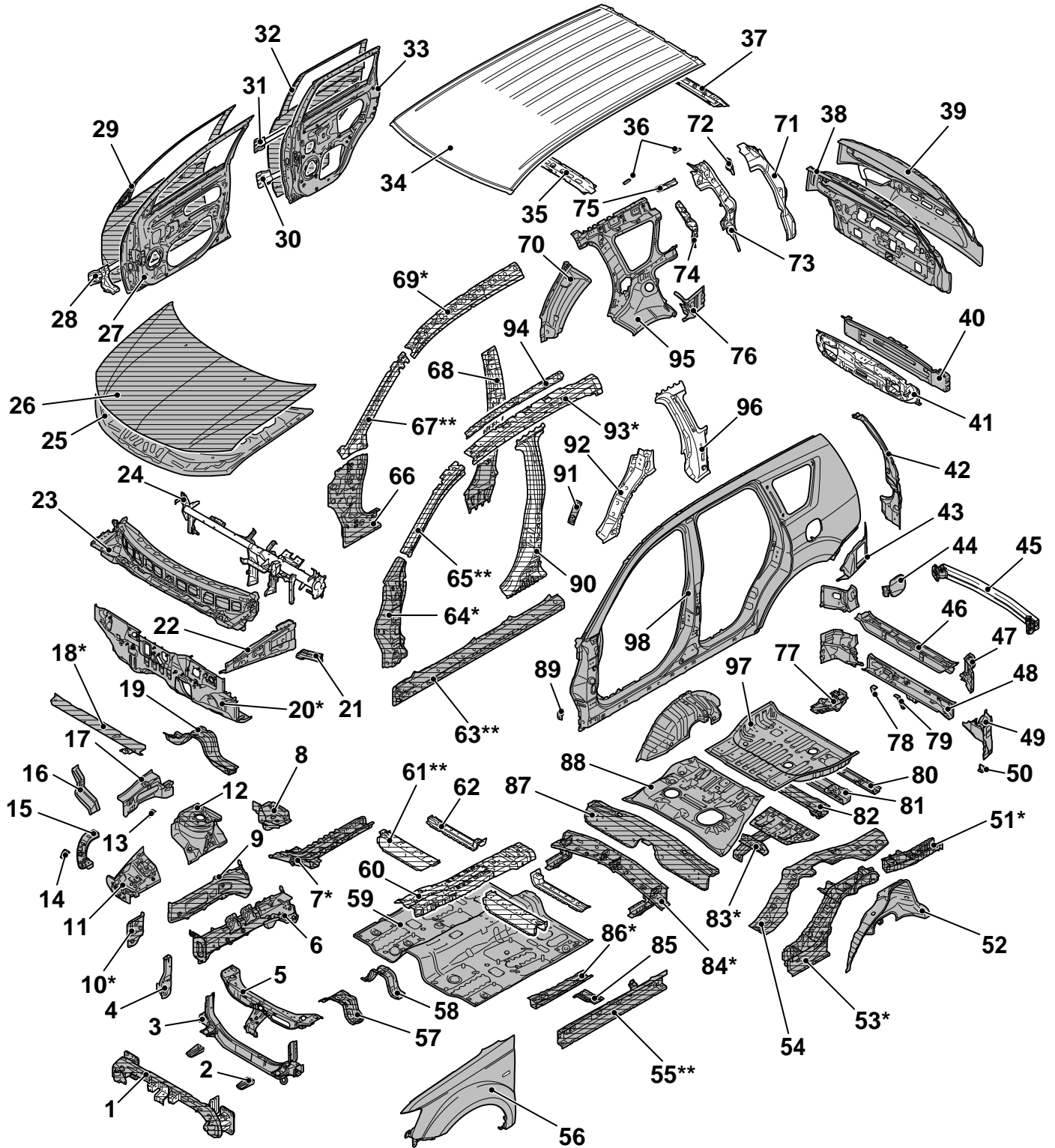
SILENCER APPLICATION LOCATIONS
..... 1-25

LOCATIONS USING URETHANE FOAM AND
FOAM MATERIAL..... 1-26

STIFFENER AND DAMP SHEET APPLICATION
LOCATIONS..... 1-26

BODY COMPONENTS

M40100000010USA0000010001



■ : Anti-corrosion steel panels

▨ : High-tensile steel panels (*: Indicates 590MPa-high-tensile steel panels.)

(**: Indicates 980MPa-ultra-high-tensile steel panels.)

ZB5003710000

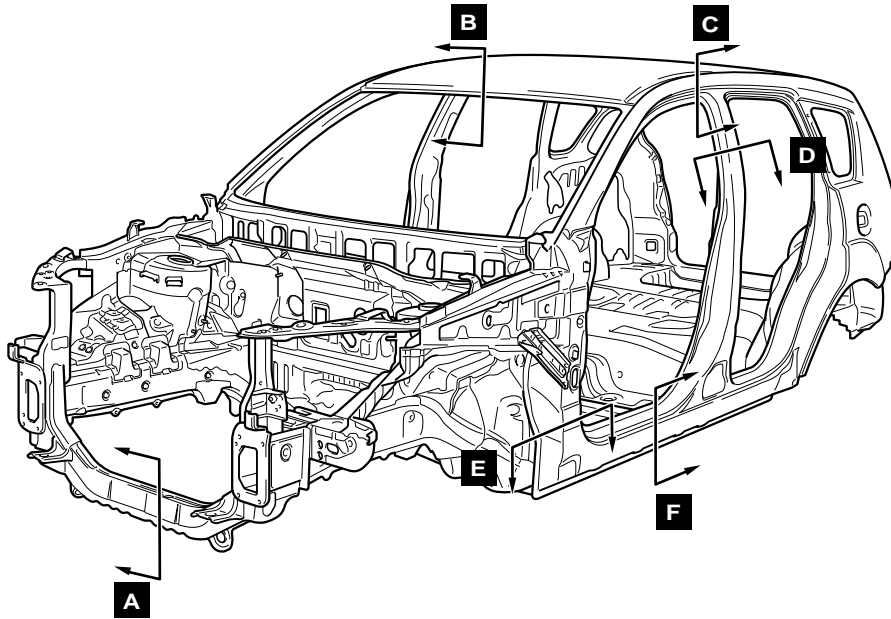
1. Front bumper reinforcement

2. Front bumper bracket lower	50. Rear bumper bracket lower
3. Front end crossmember	51. Rear floor sidemember extension
4. Headlight support panel	52. Rear wheel house inner panel
5. Front end upper bar	53. Rear floor sidemember lower
6. Front sidemember inner	54. Rear floor sidemember upper
7. Front sidemember rear	55. Front floor side sill inner
8. Front sidemember brace lower	56. Front fender
9. Front sidemember outer	57. Backbone crossmember front
10. Front sidemember outer front	58. Backbone crossmember rear
11. Front fender shield front	59. Front floor pan
12. Front wheel house inner panel	60. Backbone reinforcement
13. Fender bracket rear	61. Front floor crossmember front
14. Fender bracket front	62. Front floor crossmember rear
15. Front end upper bar side	63. Side sill reinforcement
16. Engine mounting gusset	64. Front pillar reinforcement lower
17. Front upper frame inner	65. Front pillar reinforcement upper
18. Dash panel crossmember upper	66. Front pillar inner lower
19. Dash panel crossmember lower	67. Front pillar inner upper
20. Dash panel	68. Center pillar inner
21. Upper frame to front pillar brace	69. Roof side rail inner
22. Upper frame outer	70. Quarter inner extension front
23. Front deck	71. Gate pillar reinforcement
24. Front deck crossmember	72. Third seat belt reinforcement upper
25. Hood inner panel	73. Gate pillar inner
26. Hood outer panel	74. Gate pillar inner reinforcement
27. Front door panel inner	75. Gate pillar inner reinforcement upper
28. Front door side door beam	76. Quarter inner extension lower
29. Front door panel outer	77. Shipping hook reinforcement
30. Rear door side door beam lower	78. Rear bumper bracket
31. Rear door side door beam upper	79. Rear bumper bracket center
32. Rear door panel outer	80. Rear floor crossmember rear
33. Rear door panel inner	81. Rear floor crossmember center
34. Roof panel	82. Rear floor crossmember front
35. Roof bow center	83. Front stringer
36. Roof carrier bracket	84. Rear floor (rear seat) crossmember
37. Rear roof rail	85. Front floor crossmember front lower
38. Liftgate panel inner upper	86. Front floor sidemember front
39. Liftgate panel outer upper	87. Rear floor extension panel
40. Liftgate panel outer lower	88. Rear floor pan front
41. Liftgate panel inner lower	89. Fender bracket
42. Quarter extension outer	90. Center pillar reinforcement
43. Quarter outer extension lower	91. Rear door catch reinforcement
44. Fuel filler door panel	92. Rear pillar reinforcement lower
45. Rear bumper beam	93. Roof side rail reinforcement
46. Rear end crossmember outer	94. Roof side reinforcement support
47. Rear end inner panel side	95. Rear quarter inner panel
48. Rear end crossmember inner	96. Rear pillar reinforcement
49. Gate pillar reinforcement lower	97. Rear floor pan rear

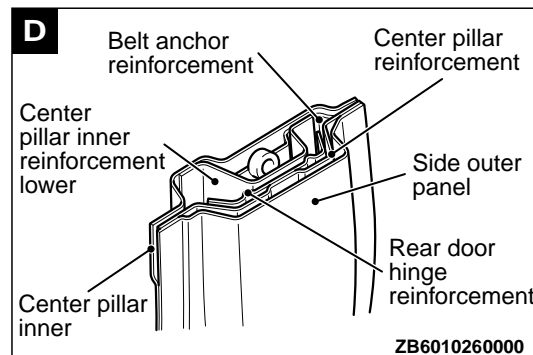
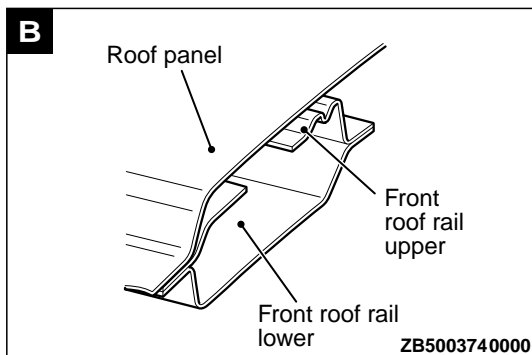
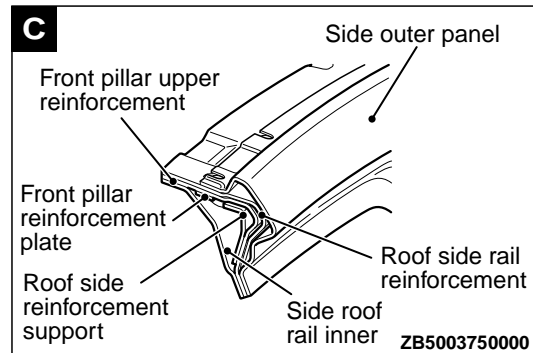
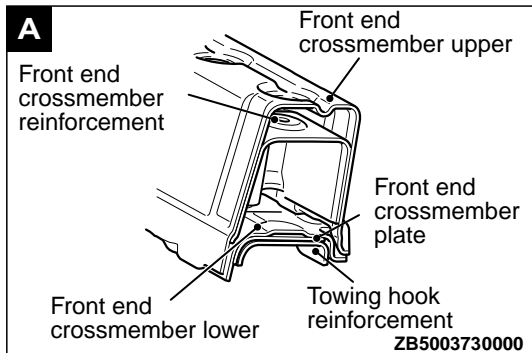
98. Side outer panel

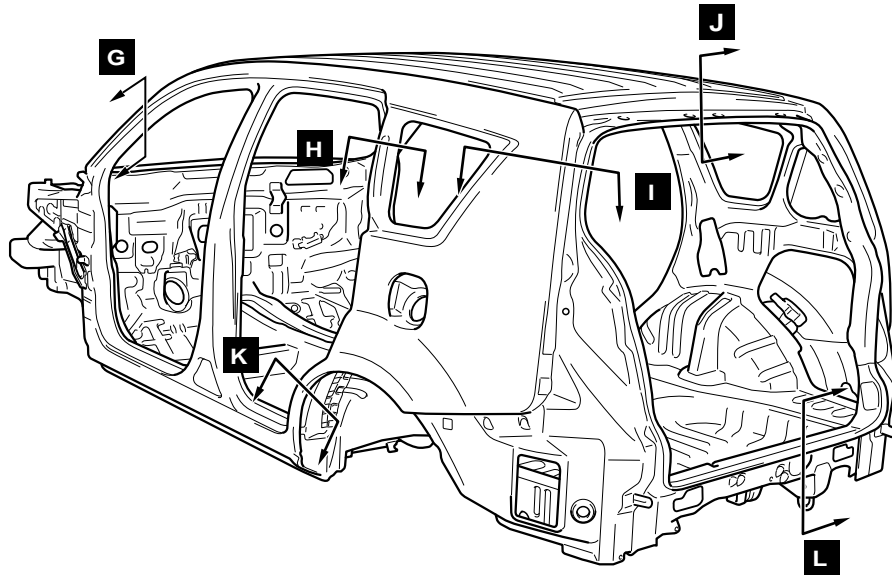
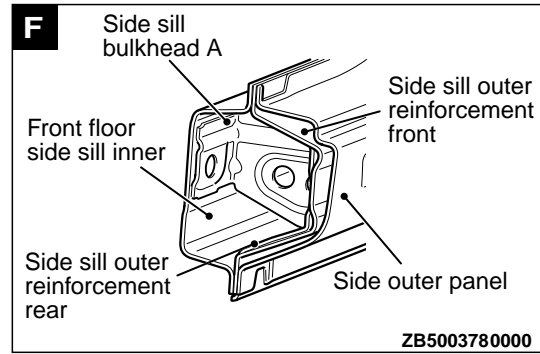
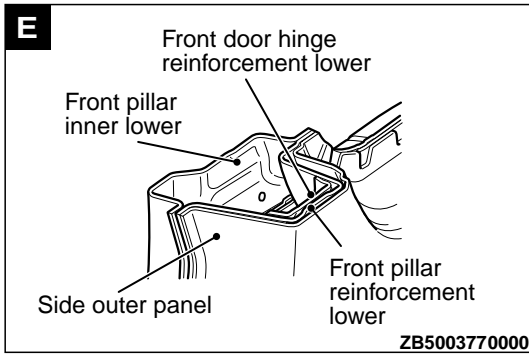
BODY MAIN CROSS-SECTIONAL VIEWS

M40100000020USA0000010001

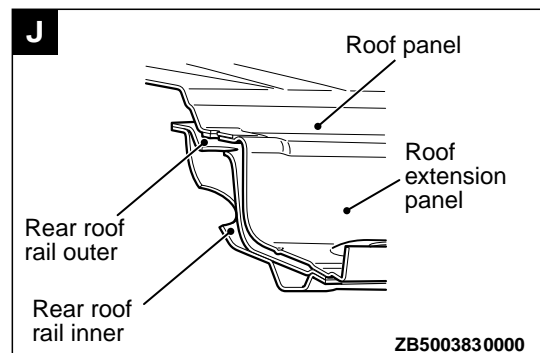
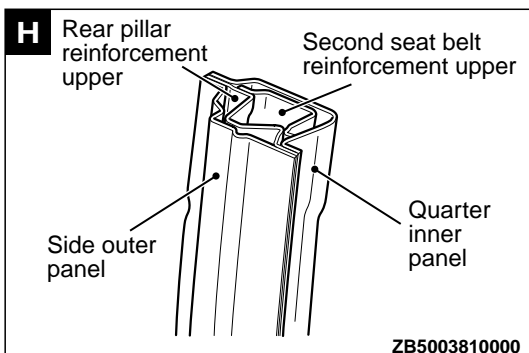
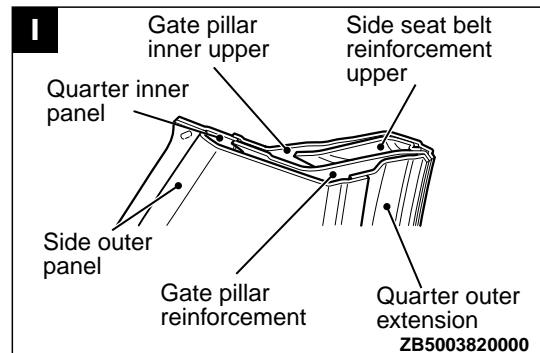
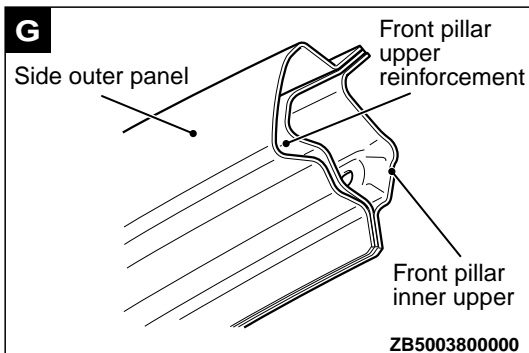


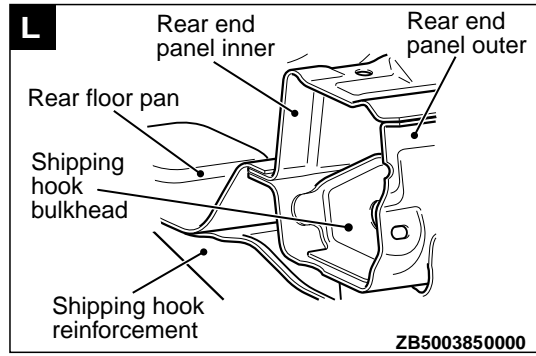
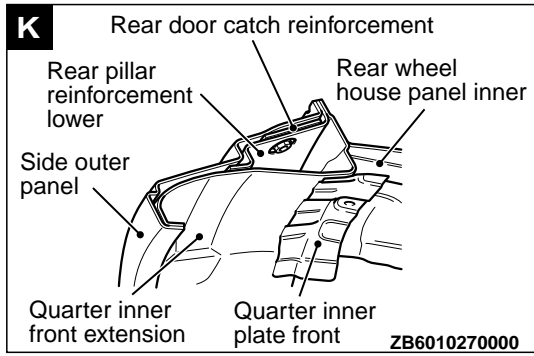
ZB5003720000





ZB5003790000



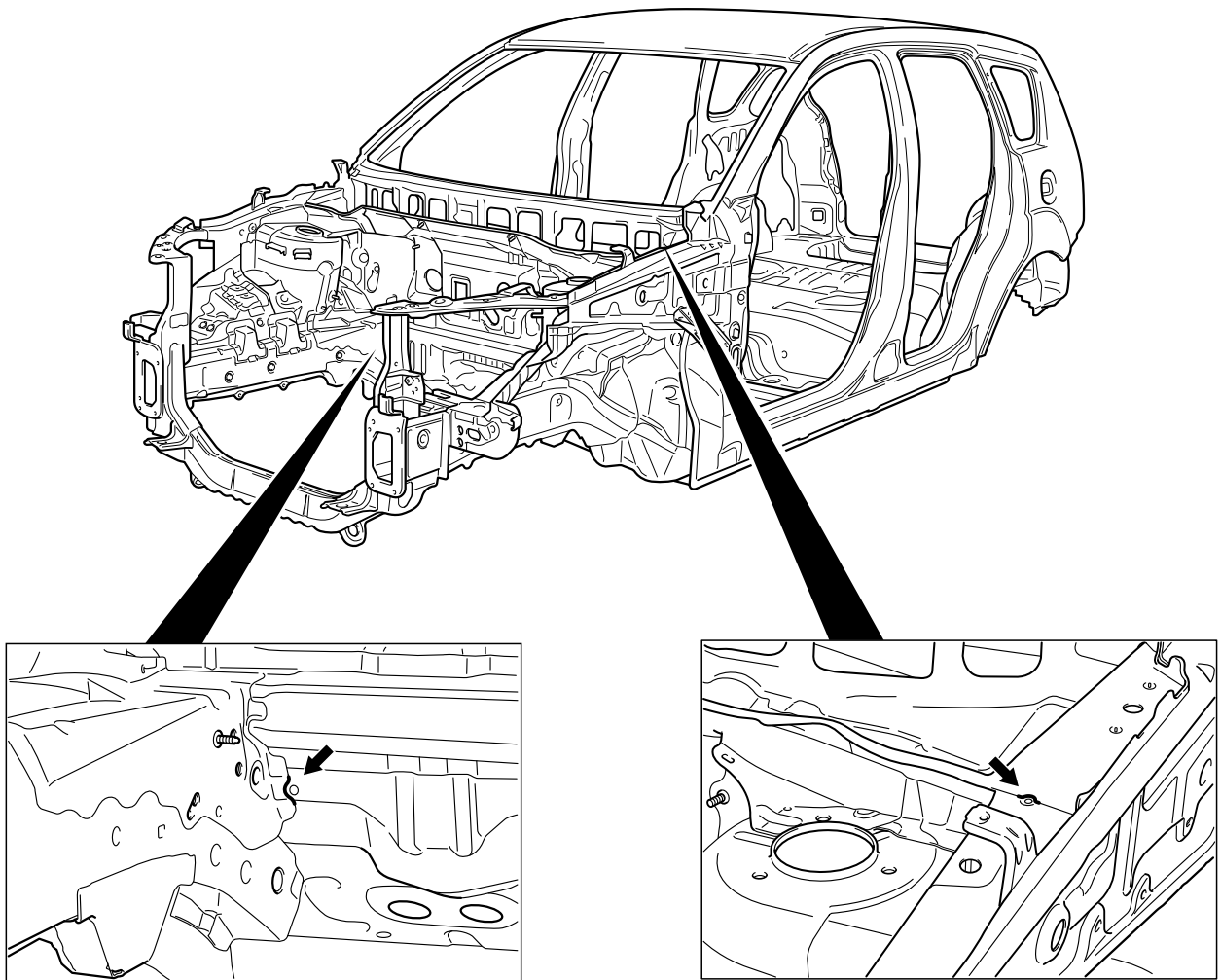


MAINTENANCE, SERVICEABILITY

M40100000030USA0000010000

FENDER SHIELD

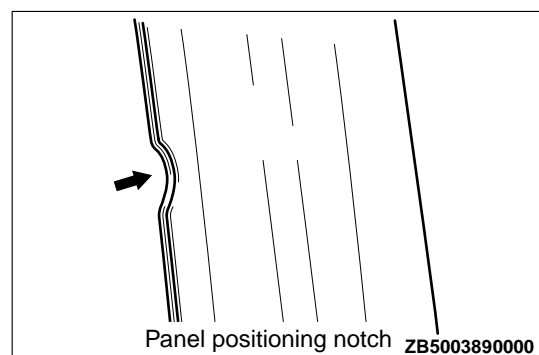
A positioning hole, lug, marking, and cut-out have been added on the front side member, front side member rear, and headlight support panel to improve assembling workability during panel replacement.

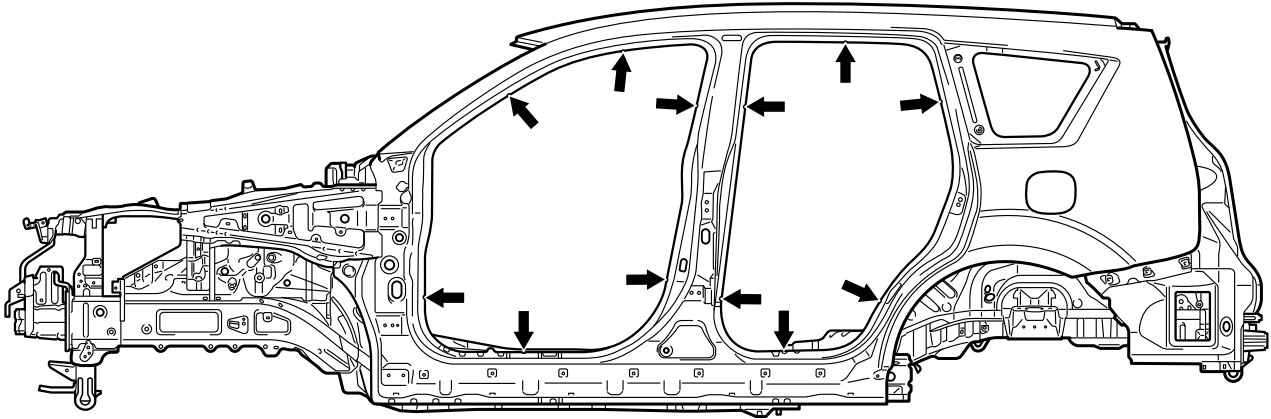


ZB5003880000

SIDE STRUCTURE

A panel positioning notch has been added on the door opening to improve assembling workability when replacing the panel.

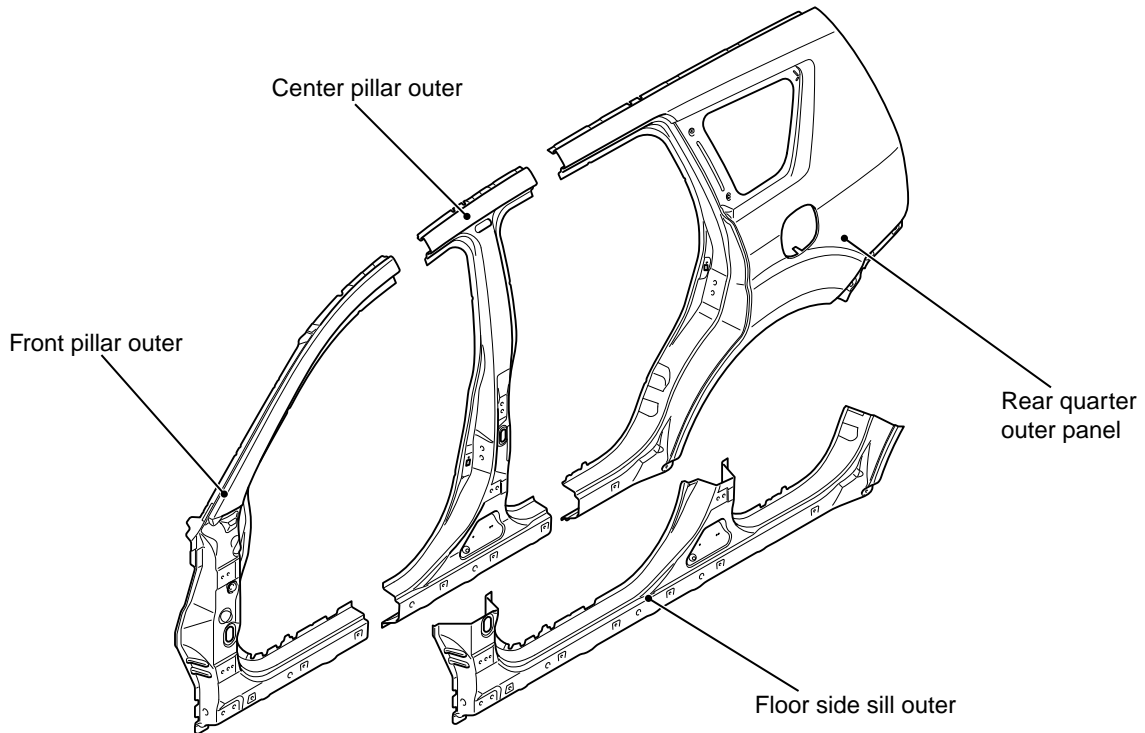




ZB500390000

SIDE OUTER PANEL

The extra parts are supplied in 4 different cut forms as a result of employing the integrated side-frame side outer panel.



ZB5003910000

BODY CONSTRUCTION CHARACTERISTICS

FRONT BODY

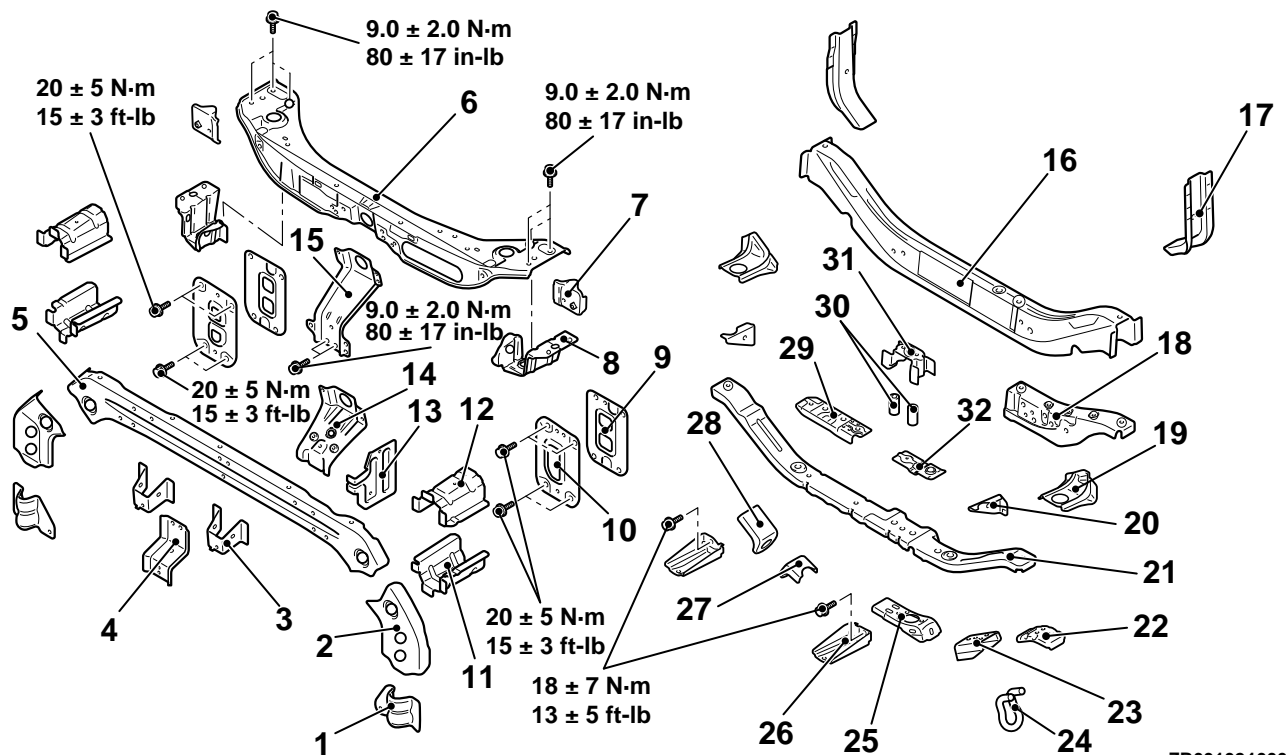
HEADLIGHT SUPPORT

*The crush box structure has been adopted to the front end of the front sidemember to improve the

M40100000100USA0000010000
 maintainability at a minor collision and the characteristics at a minor frontal collision.

•The bolt-on front bumper reinforcement, bolt-on hood lock stay, and bolt-on front end upper bar are

used to improve maintainability.

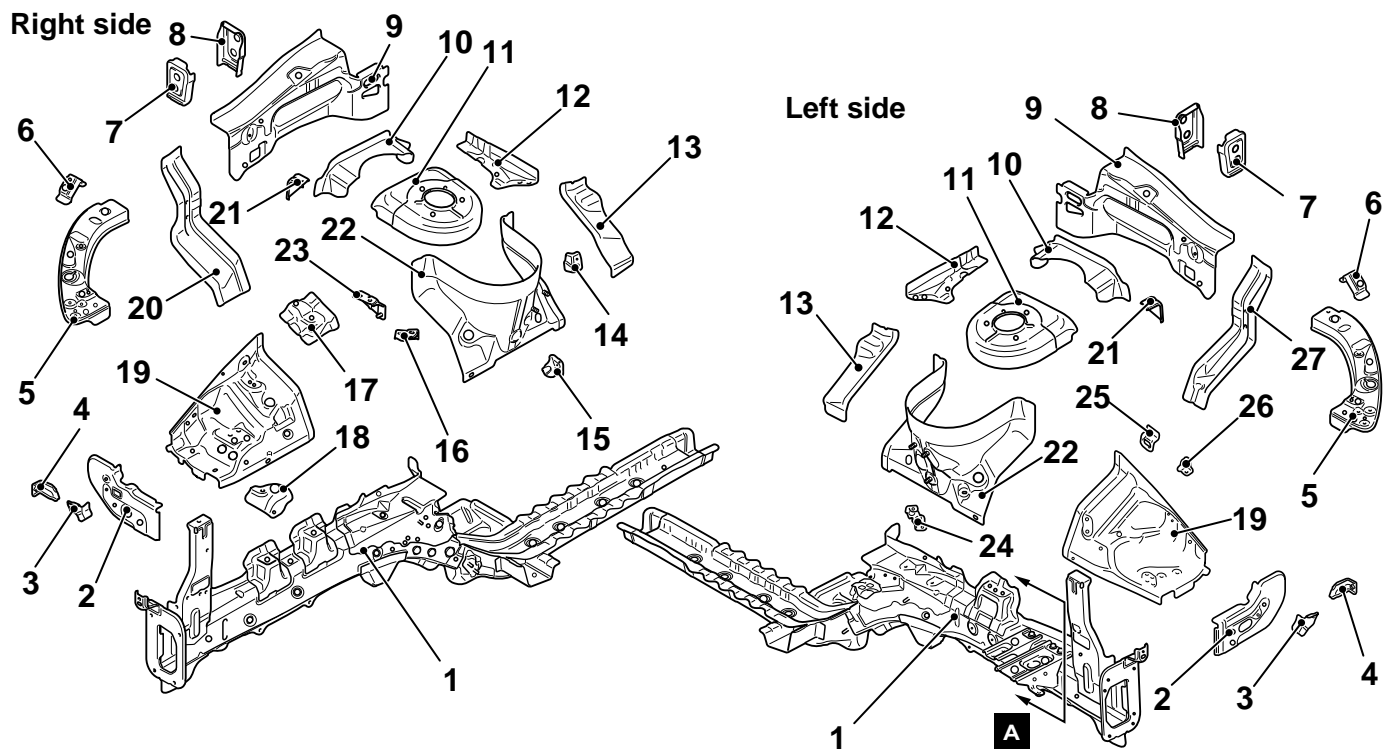


- | | |
|--|---|
| 1. Front bumper reinforcement plate front | 17. Front end crossmember gusset |
| 2. Front bumper reinforcement plate side | 18. Front end crossmember reinforcement |
| 3. Horn bracket | 19. Radiator bracket lower (A) |
| 4. Bumper bracket | 20. Radiator bracket lower (B) |
| 5. Front bumper reinforcement center | 21. Front end crossmember lower |
| 6. Front end upper bar | 22. Front end crossmember extension |
| 7. Sensor bulkhead | 23. Towing hook bracket |
| 8. Radiator bracket upper (Sensor) | 24. Towing hook |
| 9. Front bumper reinforcement plate rear | 25. Towing hook reinforcement |
| 10. Front bumper reinforcement plate | 26. Bumper bracket lower |
| 11. Front bumper reinforcement bracket lower | 27. Shipping reinforcement front |
| 12. Front bumper reinforcement bracket upper | 28. Shipping hook front |
| 13. Air guide plate | 29. Front end crossmember plate |
| 14. Hood lock stay reinforcement | 30. Front No. 2 crossmember pipe |
| 15. Hood lock stay | 31. Front end crossmember bulkhead |
| 16. Front end crossmember upper | 32. Front end crossmember reinforcement lower |

FENDER SHIELD

The front frame structure is supported in three directions by the dash crossmember center, dash

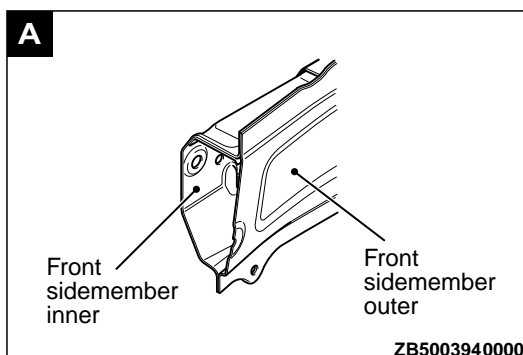
crossmember lower, and front sidemember rear in order to improve the frontal collision characteristics, and increase the vehicle body rigidity.



ZB5003930000

1. Front sidemember
2. Fender gusset
3. Front corner bracket
4. Fender bracket lower
5. Front end upper bar side
6. Fender bracket front
7. Upper frame center bulkhead
8. Upper frame rear bulkhead
9. Front upper frame inner
10. Spring house bracket reinforcement
11. Spring house bracket front
12. Spring house corner gusset
13. Spring house panel rear
14. Horn bracket

15. Spring house harness bracket
16. Suction hose bracket
17. Engine mounting bracket upper
18. Condense tank reinforcement
19. Front fender shield
20. Engine mounting gusset
21. Fender bracket rear
22. Spring house panel
23. Power steering reservoir tank bracket
24. Engine-ECU bracket
25. Relay box bracket
26. Relay box bracket rear
27. Transmission mounting gusset

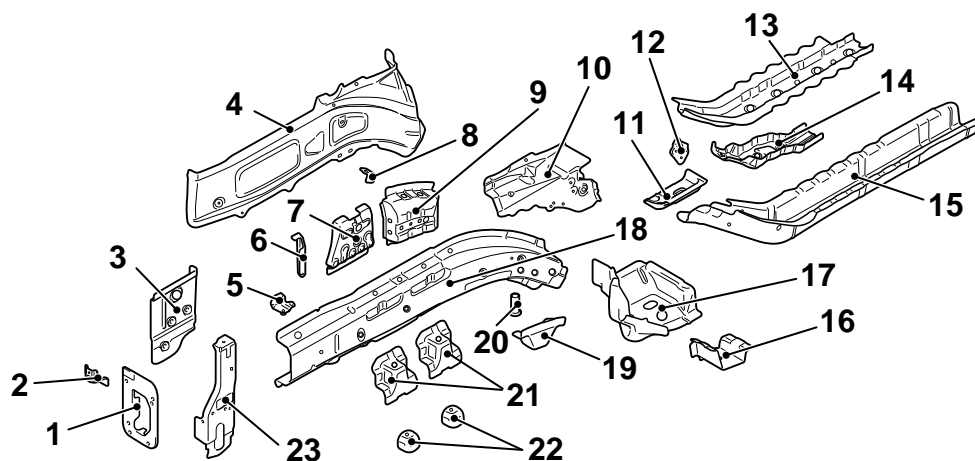


ZB5003940000

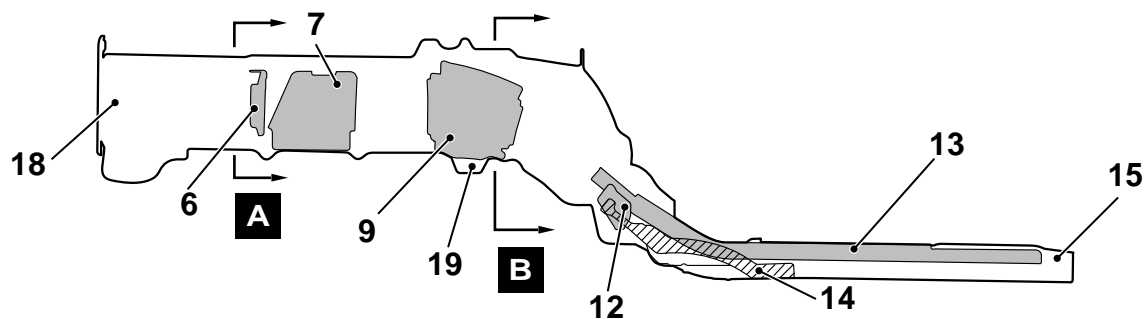
The front part of the front sidemember has hexagonal section that efficiently absorbs energy upon impact.

FRONT SIDEMEMBER REINFORCEMENT

Right Side

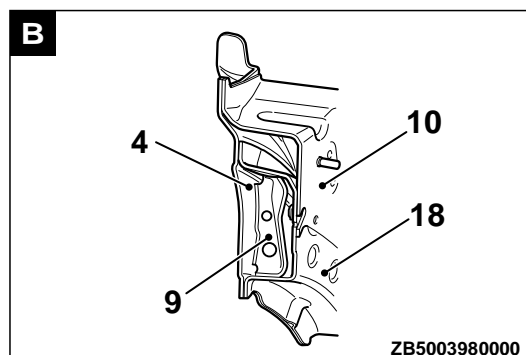
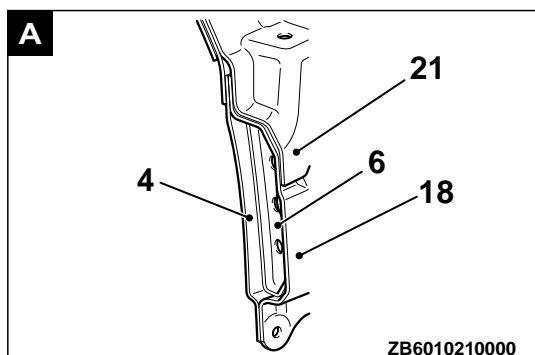


ZB6010220000

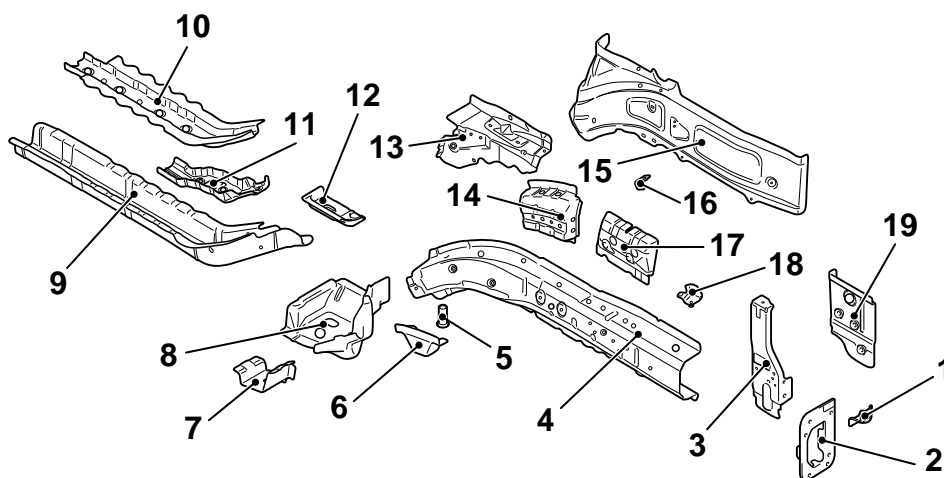


ZB5003960000

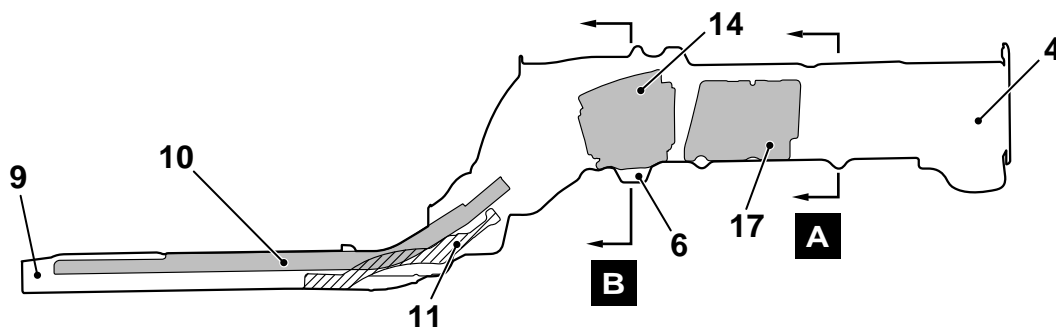
- | | |
|--|--|
| 1. Front sidemember plate rear | 13. Front sidemember rear reinforcement lower |
| 2. Headlight bracket | 14. Front sidemember rear bulkhead |
| 3. Front sidemember outer front | 15. Front sidemember rear |
| 4. Front sidemember outer | 16. Dash crossmember extension lower |
| 5. Upper bar bracket | 17. Front sidemember brace lower |
| 6. Front sidemember bulkhead front | 18. Front sidemember inner |
| 7. Engine mounting bulkhead | 19. Front suspension crossmember bracket front |
| 8. Front brake hose bracket | 20. Pipe nut |
| 9. Front suspension crossmember bulkhead | 21. Engine mount bracket |
| 10. Front sidemember brace upper | 22. Engine mount reinforcement |
| 11. Tie down reinforcement front | 23. Headlight support panel |
| 12. Height sensor bracket | |



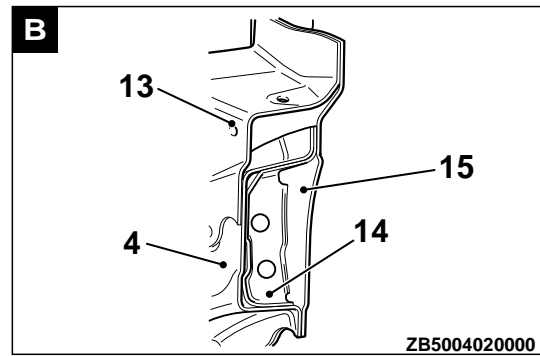
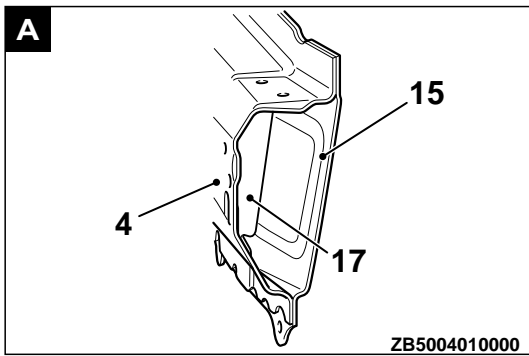
Left Side



ZB5003990000

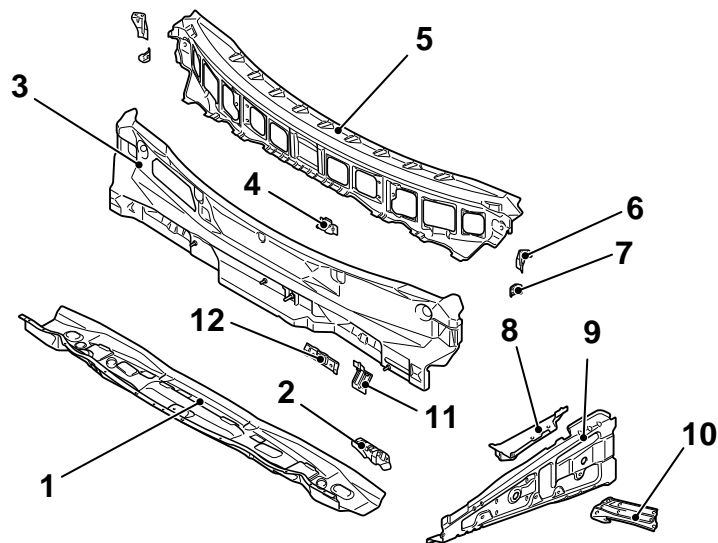


- | | |
|---|---|
| 1. Headlight bracket | 11. Front sidemember rear bulkhead |
| 2. Front sidemember plate rear | 12. Tie down reinforcement front |
| 3. Headlight support panel | 13. Front sidemember brace upper |
| 4. Front sidemember inner | 14. Front suspension crossmember bulkhead |
| 5. Pipe nut | 15. Front sidemember outer |
| 6. Front suspension crossmember bracket front | 16. Front brake hose bracket |
| 7. Dash crossmember extension lower | 17. Transmission mounting bulkhead |
| 8. Front sidemember brace lower | 18. Upper bar bracket |
| 9. Front sidemember rear | 19. Front sidemember outer front |
| 10. Front sidemember rear reinforcement lower | |



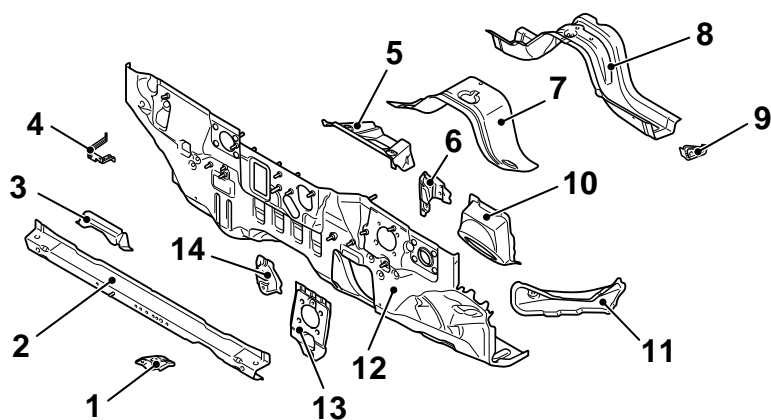
FRONT DECK

The impact absorbing opening on the cowl top outer panel has been added to efficiently absorb energy upon impact and improve the pedestrian protection capability.



ZB5004030000

- | | |
|------------------------------------|---------------------------------------|
| 1. Cowl top lower panel | 7. Cowl top bulkhead side |
| 2. Brake pedal reinforcement upper | 8. Upper frame extension inner |
| 3. Cowl top inner panel | 9. Upper frame outer |
| 4. Wiper bracket | 10. Upper frame to front pillar brace |
| 5. Cowl top outer panel | 11. Deck crossmember stay bracket |
| 6. Fender bracket | 12. Brake pedal support bracket |

DASH PANEL

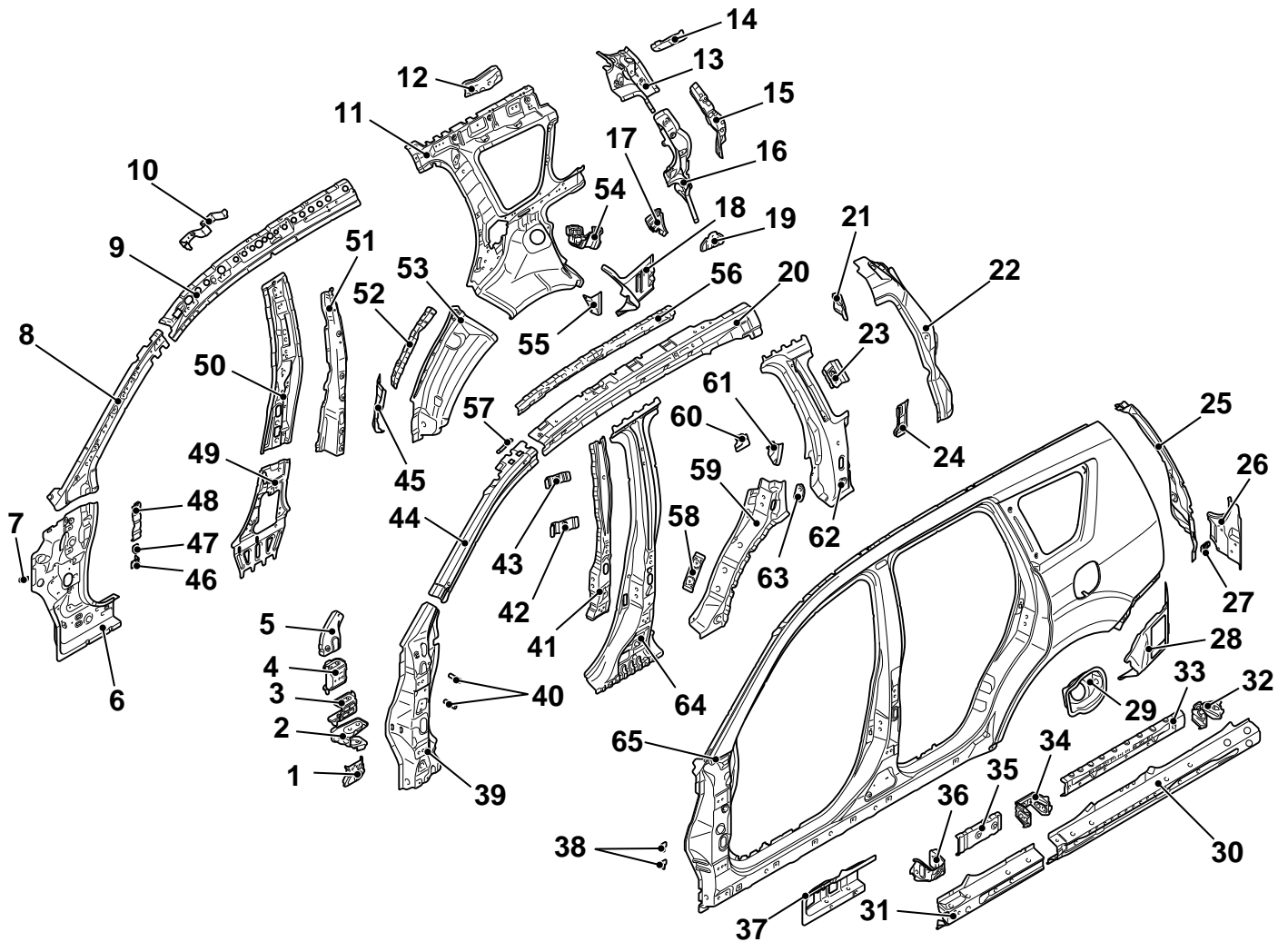
ZB5004040000

- | | |
|----------------------------------|------------------------------------|
| 1. Brake tube bracket | 8. Dash crossmember lower |
| 2. Dash panel crossmember center | 9. Dash crossmember lower bulkhead |
| 3. Dash crossmember extension | 10. Steering shaft bracket |
| 4. Dash heat protector bracket | 11. Dash crossmember side |
| 5. Backbone reinforcement front | 12. Dash panel |
| 6. Accelerator pedal bracket | 13. Dash panel reinforcement |
| 7. Dash panel lower | 14. Canister bracket |

SIDE BODY

M40100000110USA0000010000

SIDE STRUCTURE



ZB6010280000

- | | |
|--|---|
| 1. Front door hinge reinforcement lower | 16. Gate inner pillar lower |
| 2. Front pillar reinforcement bulkhead center | 17. Third seat belt reinforcement lower (Left side) <7 person> |
| 3. Front door check reinforcement | 18. Quarter inner lower extension |
| 4. Front door hinge reinforcement upper | 19. Third seat belt reinforcement lower (Right side) <7 person> |
| 5. Front pillar reinforcement lower support | 20. Roof side rail reinforcement |
| 6. Front pillar inner lower | 21. Third seat belt reinforcement upper <7 person> |
| 7. Harness bracket | 22. Gate pillar reinforcement |
| 8. Front pillar inner upper | 23. Second seat belt reinforcement upper |
| 9. Roof side rail inner | 24. Liftgate lower cable reinforcement |
| 10. Assist grip bracket front | 25. Quarter outer extension upper |
| 11. Quarter inner panel | 26. Quarter outer extension rear |
| 12. Side outer reinforcement rear (Right side) | 27. Rear bumper bracket side |
| 13. Gate inner pillar upper | 28. Quarter outer extension lower |
| 14. Gate pillar inner reinforcement upper <7 person> | 29. Filler neck bracket (Left side) |
| 15. Gate pillar inner reinforcement <7 person> | |

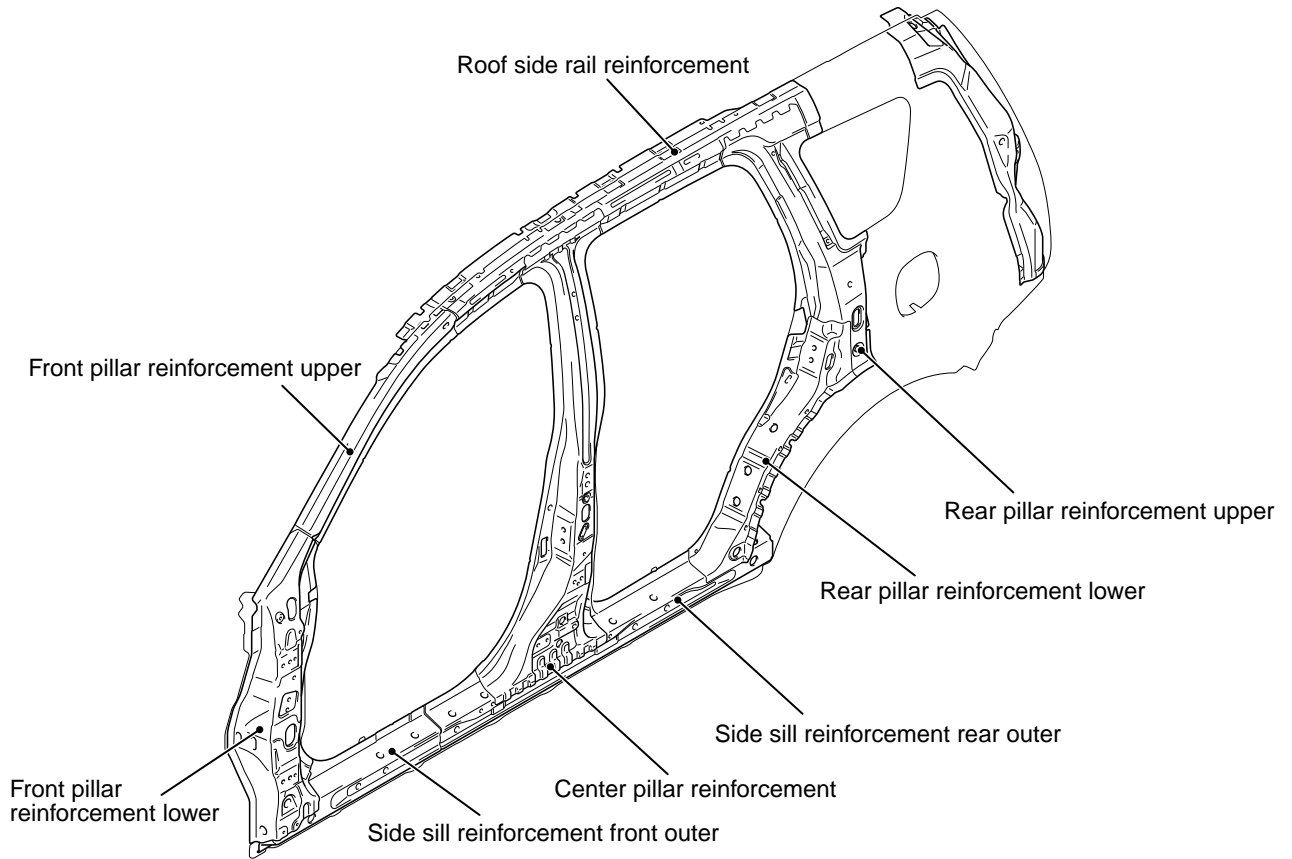
BODY CONSTRUCTION
BODY CONSTRUCTION CHARACTERISTICS

- | | |
|---|---|
| 30. Side sill outer reinforcement rear | 48. Deck crossmember bracket (Right side) |
| 31. Side sill outer reinforcement front | 49. Center inner pillar lower |
| 32. Side sill bulkhead C | 50. Center inner pillar upper |
| 33. Side sill reinforcement support center | 51. Center pillar inner reinforcement lower |
| 34. Side sill bulkhead A | 52. Quarter inner plate front |
| 35. Side sill reinforcement support front | 53. Quarter inner front extension |
| 36. Side sill bulkhead front | 54. Jack bracket (Right side) |
| 37. Side sill inner support front | 55. Splash shield bracket |
| 38. Fender bracket | 56. Roof side reinforcement support |
| 39. Front pillar reinforcement lower | 57. Front pillar reinforcement plate |
| 40. Deck support pipe (Left side) | 58. Rear door catch reinforcement |
| 41. Rear door hinge reinforcement | 59. Rear pillar reinforcement lower |
| 42. Center pillar seat belt reinforcement lower | 60. Second seat belt reinforcement lower (Right side) |
| 43. Center pillar seat belt reinforcement upper | 61. Second seat belt reinforcement lower (Left side) |
| 44. Front pillar upper reinforcement | 62. Rear pillar reinforcement upper |
| 45. Side sill end plate | 63. Liftgate lower striker reinforcement |
| 46. Hood opener bracket (Left side) | 64. Center pillar reinforcement |
| 47. Cowl side trim bracket | 65. Side outer panel |

SIDE STRUCTURE REINFORCEMENT

The ring structure of the side structure reinforcement has been adopted to improve the

collision characteristics and the rigidity of the whole vehicle.

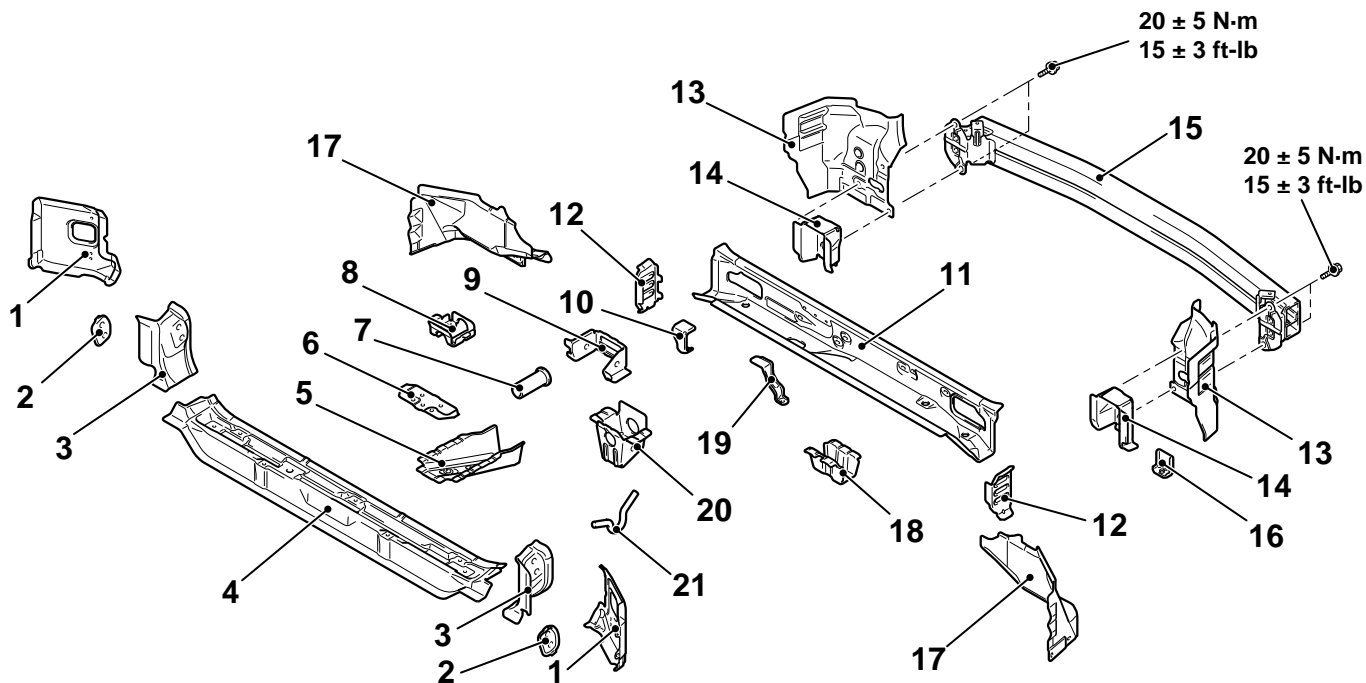


ZB5004060000

REAR BODY

M40100000120USA0000010000

REAR END CROSSMEMBER



ZB5004070000

- | | |
|---|---------------------------------------|
| 1. Rear end inner panel side | 12. Rear end bulkhead |
| 2. Liftgate lower striker reinforcement | 13. Gate pillar reinforcement lower |
| 3. Rear end inner panel corner | 14. Rear bumper beam reinforcement |
| 4. Rear end crossmember inner | 15. Rear bumper beam |
| 5. Shipping hook reinforcement lower | 16. Bumper bracket lower |
| 6. Third seat striker reinforcement | 17. Rear floor side brace |
| 7. Pipe nut | 18. Spare tire bracket |
| 8. Towing hook bracket pipe | 19. Rear bumper bracket center |
| 9. Shipping hook bulkhead | 20. Shipping hook reinforcement upper |
| 10. Rear bumper bracket lower | 21. Shipping hook |
| 11. Rear end crossmember outer | |

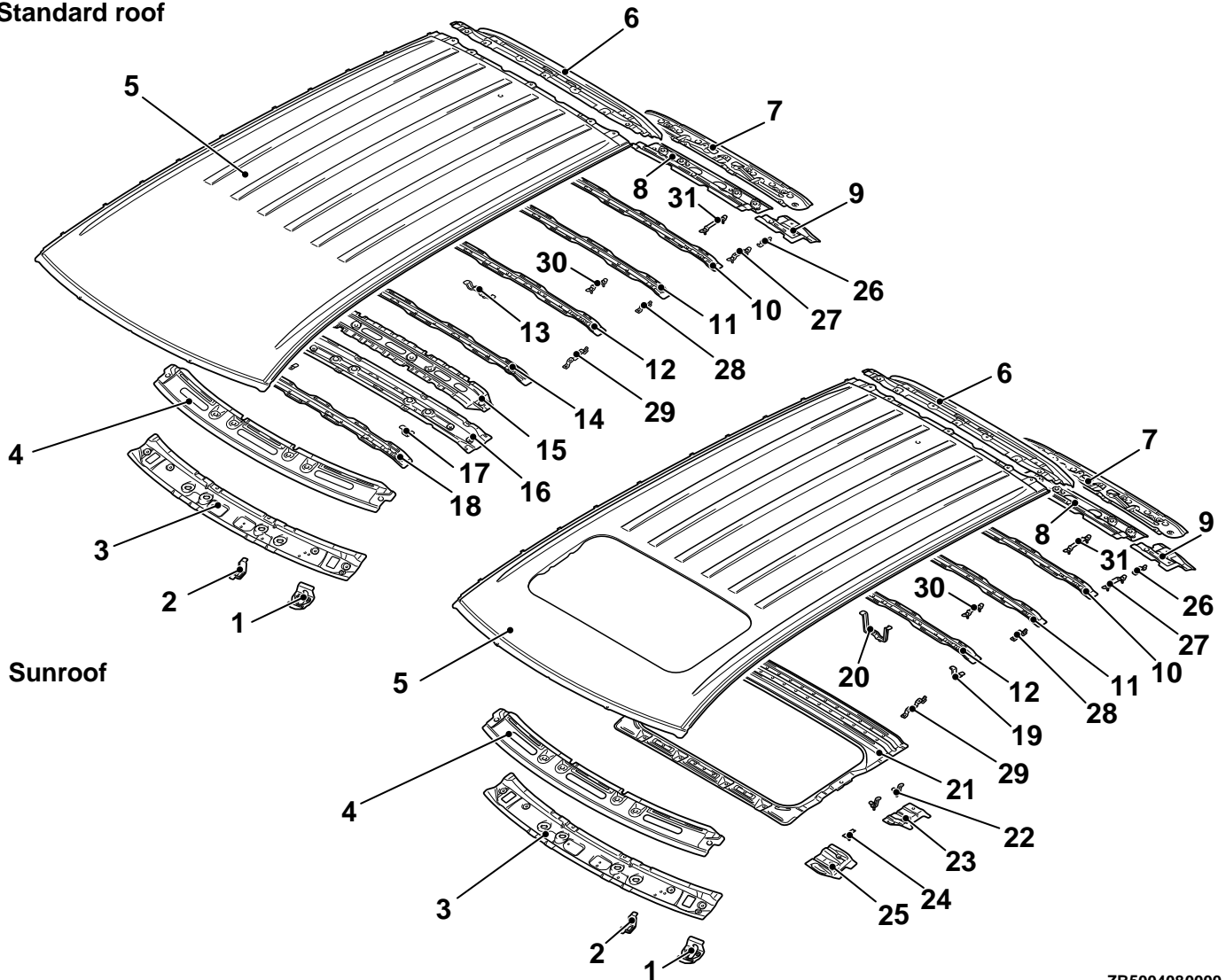
ROOF

M40100000130USA0000010000

▪A roof panel made of aluminum alloy has been adopted to reduce the weight of vehicle and improve handling stability.

▪The closed section structure has been adopted to the front roof rail, roof bow center, and rear roof rail to reduce vibration and noise, and to improve the rigidity.

Standard roof



ZB5004080000

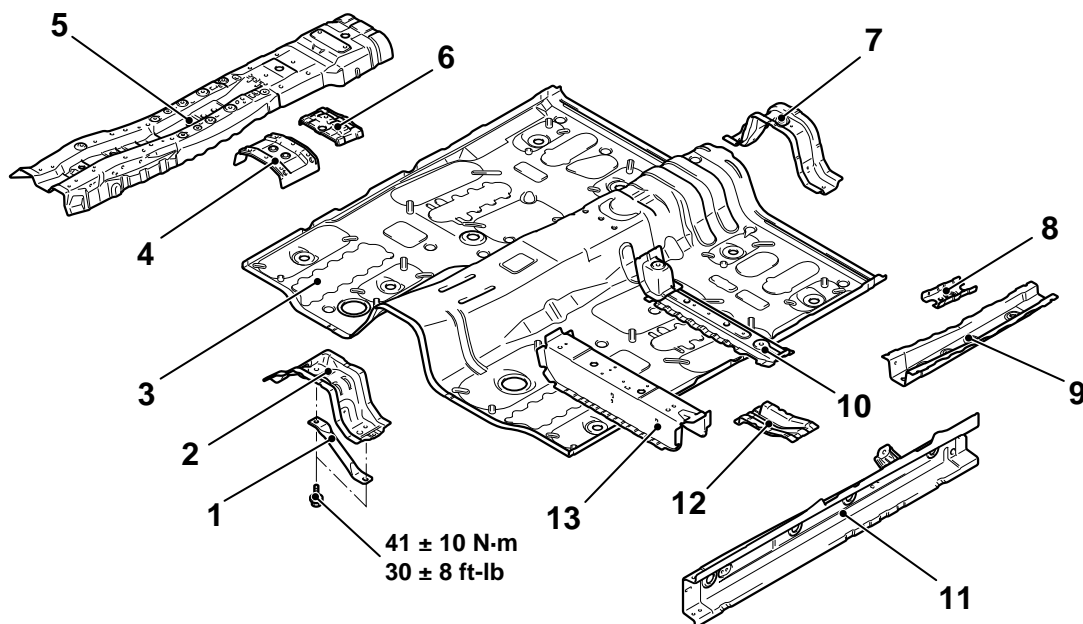
- | | |
|---------------------------------|---|
| 1. Sunvisor bracket | 12. Roof bow B |
| 2. Holder bracket | 13. Dome light bracket (Vehicles without roof rail) |
| 3. Roof front rail lower | 14. Roof bow A |
| 4. Roof front rail upper | 15. Center roof bow lower |
| 5. Roof panel | 16. Center roof bow upper |
| 6. Roof extension panel | 17. Head lining bracket |
| 7. Roof rear rail inner | 18. Roof bow front |
| 8. Roof rear rail outer | 19. Sunroof bracket rear |
| 9. Liftgate hinge reinforcement | 20. Dome light bracket (Vehicles with roof rail) |
| 10. Roof bow D | 21. Roof reinforcement |
| 11. Roof bow C | 22. Sunroof bracket |

- | | |
|--|--|
| 23. Set bracket rear | 28. Roof rack bracket center (Vehicles with roof rail) |
| 24. Set bracket front | 29. Roof rack bracket front (Vehicles with roof rail) |
| 25. Set bracket front | 30. Roof carrier bracket (Vehicles without roof rail) |
| 26. Roof rail bracket (Vehicles with roof rail) | 31. Roof bracket (Vehicles without roof rail) |
| 27. Roof rack bracket rear (Vehicles with roof rail) | |

UNDER BODY

M40100000140USA0000010000

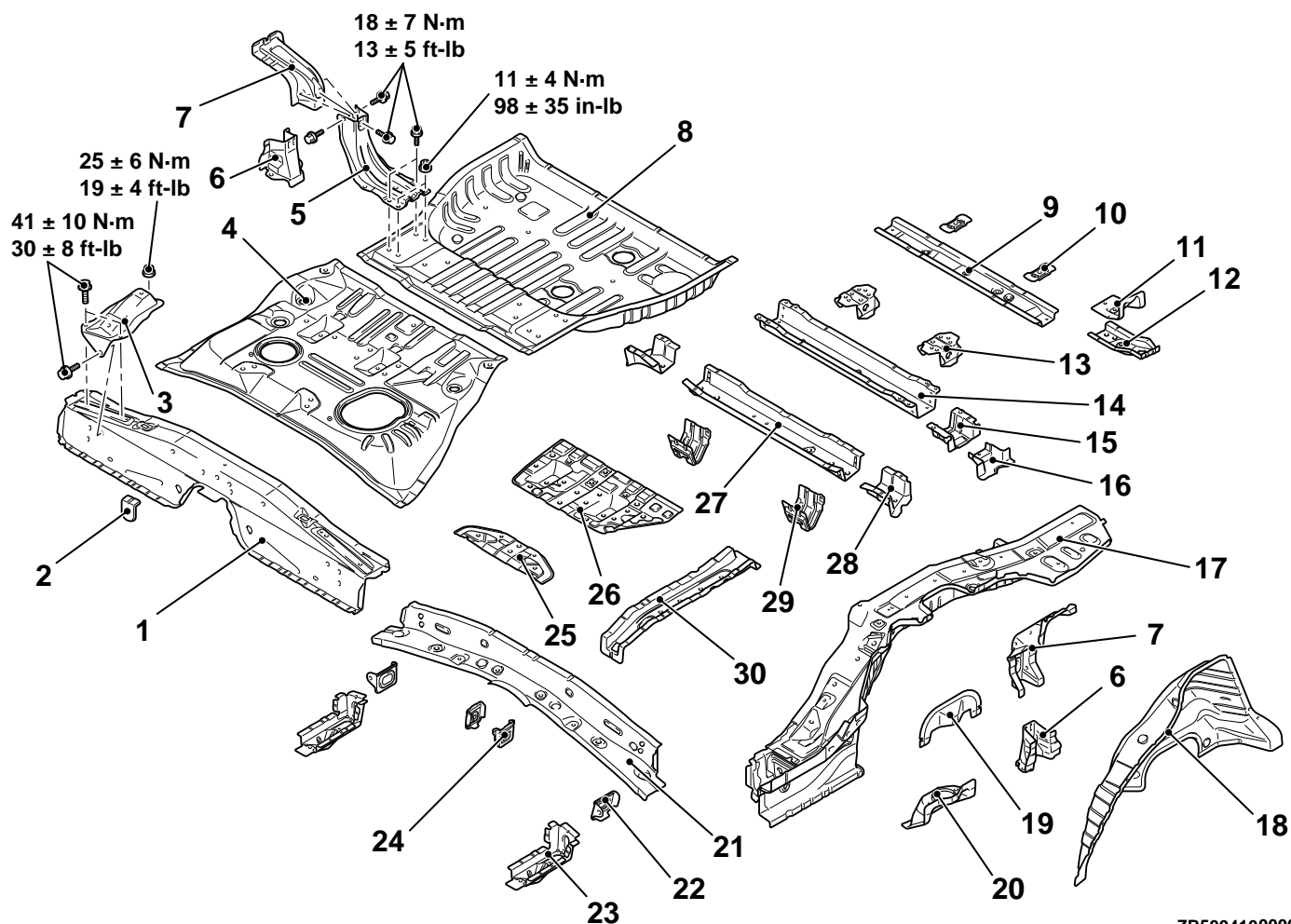
FRONT FLOOR



ZB5004090000

- | | |
|--------------------------------------|-------------------------------------|
| 1. Backbone brace front <2WD> | 8. Front floor sidemember plate |
| 2. Backbone crossmember front | 9. Front floor sidemember front |
| 3. Front floor pan | 10. Front floor crossmember rear |
| 4. Parking brake lever reinforcement | 11. Front floor side sill inner |
| 5. Backbone reinforcement | 12. Front floor reinforcement lower |
| 6. Barking brake cable reinforcement | 13. Front floor crossmember front |
| 7. Backbone crossmember rear | |

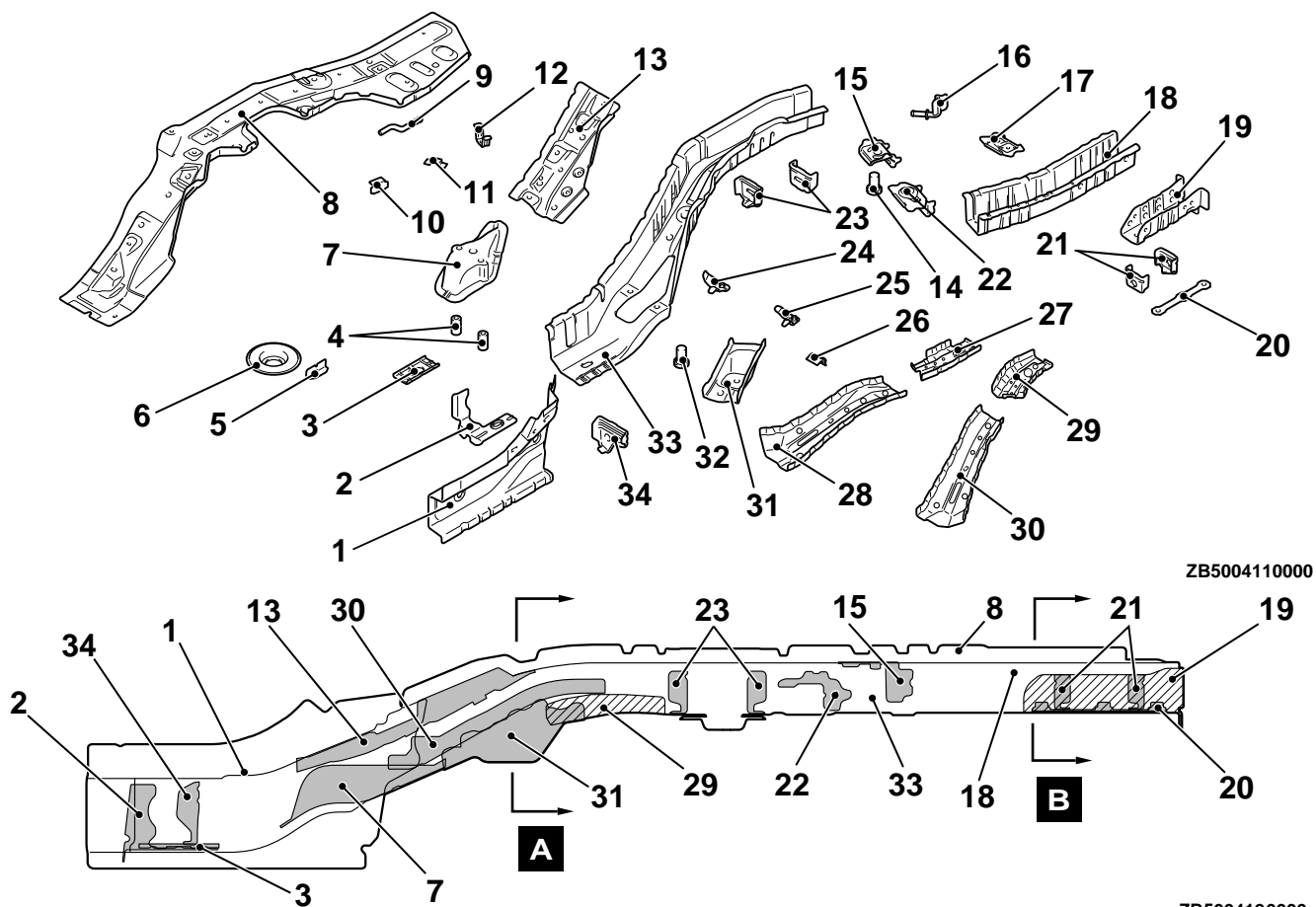
REAR FLOOR



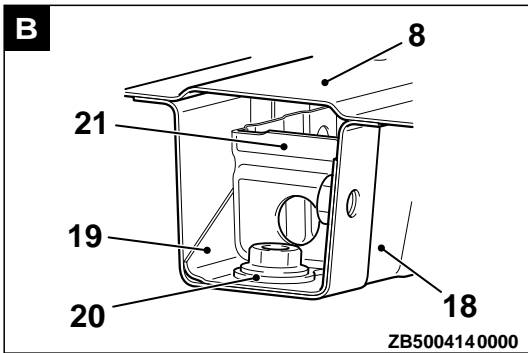
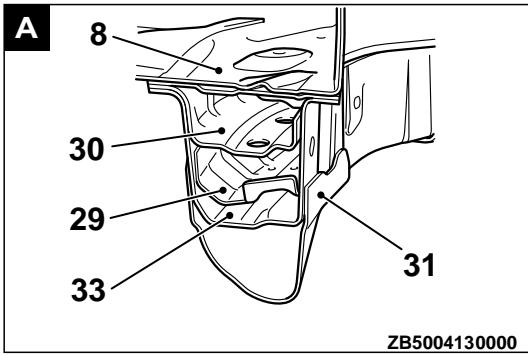
ZB5004100000

- | | |
|---|---|
| 1. Rear floor extension | 16. Rear floor crossmember center extension lower |
| 2. Rear seat reinforcement front side | 17. Rear floor sidemember |
| 3. Second seat hinge bracket side | 18. Rear wheel house panel inner |
| 4. Rear floor pan front | 19. Rear spring house panel |
| 5. Rear floor crossmember upper extension | 20. Rear spring house bracket |
| 6. Rear spring house reinforcement | 21. Rear seat crossmember |
| 7. Rear wheel house reinforcement | 22. Rear seat crossmember bulkhead side |
| 8. Rear floor pan rear | 23. Sidemember front floor extension |
| 9. Rear floor crossmember rear | 24. Rear seat crossmember bulkhead inner |
| 10. Third seat bracket center | 25. Second seat hinge reinforcement |
| 11. Rear floor crossmember extension rear upper | 26. Second seat striker center reinforcement |
| 12. Rear floor crossmember extension rear | 27. Rear floor crossmember front |
| 13. Third seat hinge front bracket | 28. Rear floor crossmember extension front |
| 14. Rear floor crossmember center | 29. Fuel tank rear bracket |
| 15. Rear floor crossmember extension center | 30. Front stringer |

REAR FLOOR SIDEMEMBER REINFORCEMENT



- | | |
|--|--|
| 1. Rear floor side sill inner | 18. Rear floor sidemember extension |
| 2. Rear floor sidemember extension front | 19. Rear floor sidemember extension bracket |
| 3. Rear tie down plate | 20. Trailer hitch plate |
| 4. Front No. 2 crossmember pipe | 21. Rear floor sidemember extension bulkhead |
| 5. Spring sheet support | 22. Rear suspension bracket rear |
| 6. Spring sheet | 23. Rear floor sidemember bulkhead rear |
| 7. Trailing arm bracket | 24. Rear parking brake cable rear bracket (Right side) |
| 8. Rear floor sidemember upper | 25. Rear parking brake cable rear bracket (Left side) |
| 9. Muffler hanger hook (Right side) | 26. Rear brake hose bracket |
| 10. Seat under frame reinforcement | 27. Rear floor sidemember rear reinforcement (Right side) |
| 11. Bracket | 28. Rear floor sidemember front reinforcement (Right side) |
| 12. Canister bracket | 29. Rear floor sidemember rear reinforcement (Left side) |
| 13. Rear floor sidemember reinforcement | 30. Rear floor sidemember front reinforcement (Left side) |
| 14. Pipe nut | 31. Rear suspension bracket front |
| 15. Third seat anchor reinforcement | 32. Pipe nut |
| 16. Muffler hanger rear (Right side) | 33. Rear floor sidemember lower |
| 17. Third seat hinge reinforcement | 34. Rear floor sidemember bulkhead |



DOOR

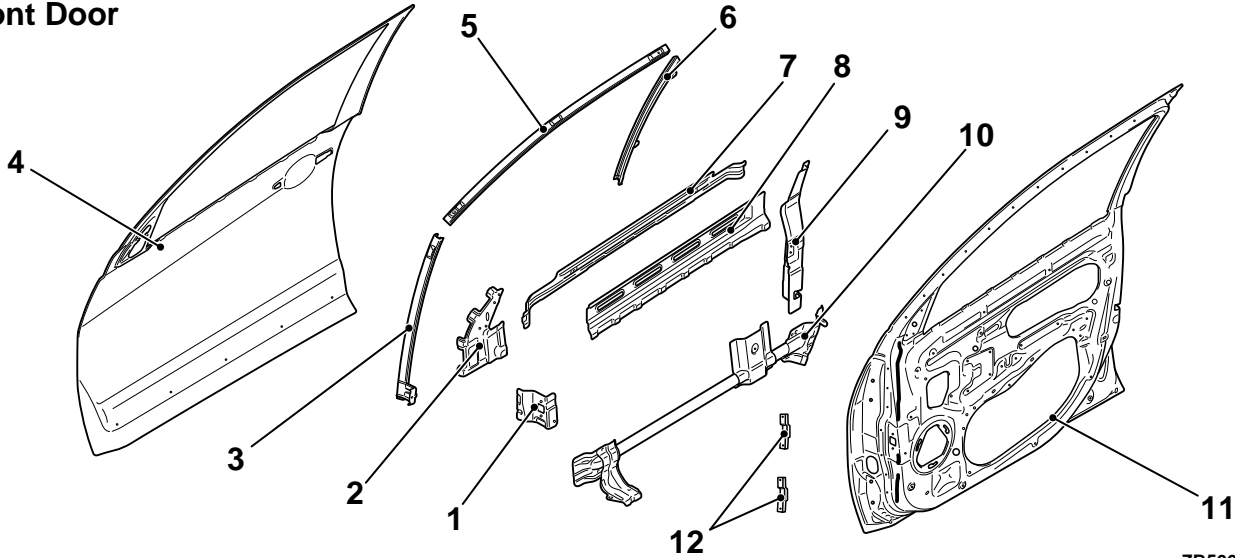
M40100000150USA0000010000

An uneven thickness steel sheet* has been used for the front and rear door inner panels to make the

forward part of the vehicle thicker for reduction in vehicle weight and higher rigidity.

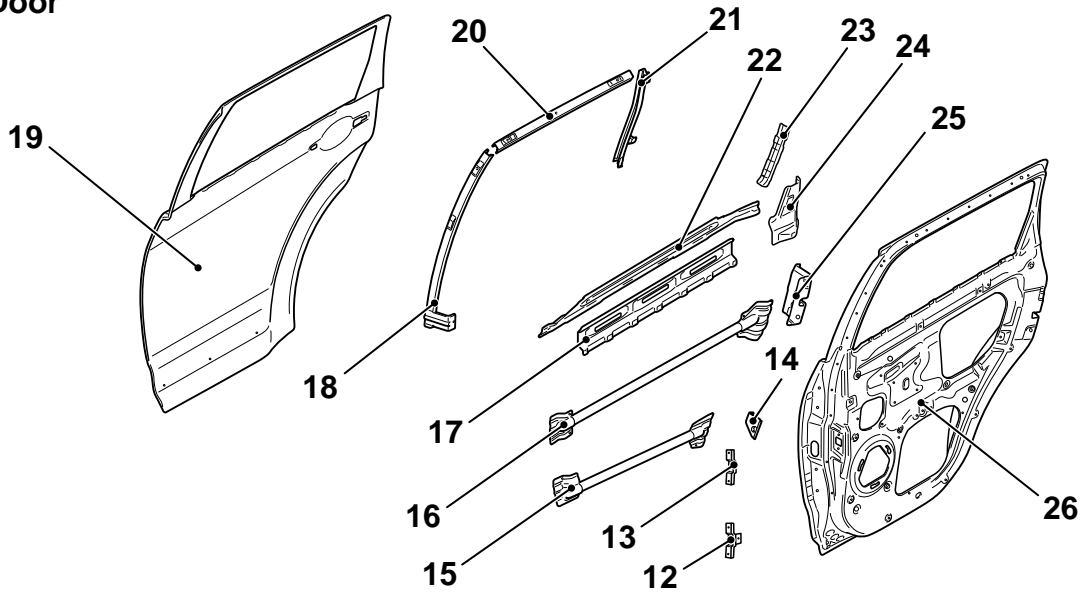
*NOTE: *: A steel sheet of varying thickness that is welded into one steel sheet.*

Front Door



ZB5004150000

Rear Door



ZB5004160000

1. Front door check reinforcement
2. Front door mirror reinforcement
3. Front door window sash front
4. Front door outer panel
5. Front door window sash upper
6. Front door window sash rear
7. Front door beltline outer reinforcement
8. Front door beltline inner reinforcement

9. Front door latch reinforcement
10. Front door side door beam
11. Front door inner panel
12. Nut plate
13. Nut plate
14. Nut plate
15. Rear door side door beam lower
16. Rear door side door beam upper

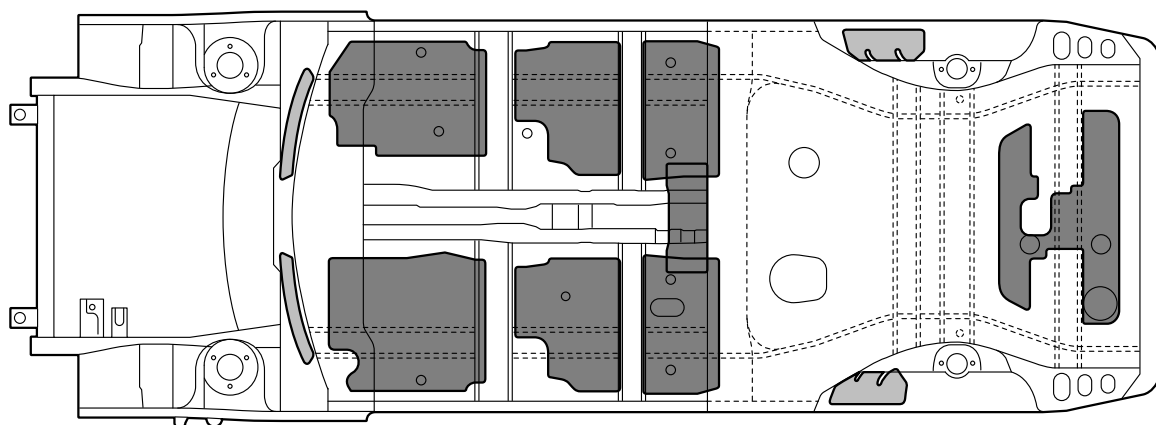
- | | |
|--|--|
| 17. Rear door beltline inner reinforcement | 22. Rear door beltline outer reinforcement |
| 18. Rear door window sash front | 23. Rear door inner rear reinforcement |
| 19. Rear door outer panel | 24. Rear door sash reinforcement |
| 20. Rear door window sash upper | 25. Rear door latch reinforcement |
| 21. Rear door window sash rear | 26. Rear door inner panel |

SILENCER APPLICATION LOCATIONS

M40100000050USA0000010001

A silencer (MD-12) has been affixed on the upper surface of the floor for vibration damping.

NOTE: MD-12 is a high-performance sheet made of asphalt, to which mica, heat cured resin, and so on are added to improve damping performance.



- : 1.6 mm thick melting sheet
 : 3.6 mm thick MD-12 [Place three 1.6 mm melting sheet one on top of another.]

ZB5004170000

NOTE: () indicates the number of melting sheets that are used for repair.

LOCATIONS USING URETHANE FOAM AND FOAM MATERIAL

M40100000180USA0000010000

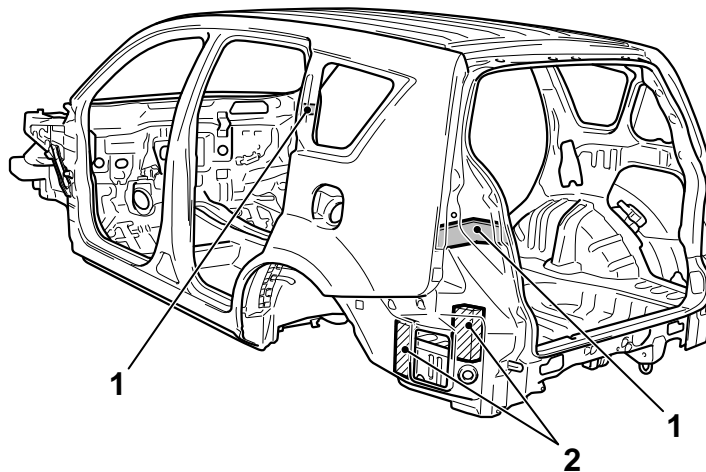
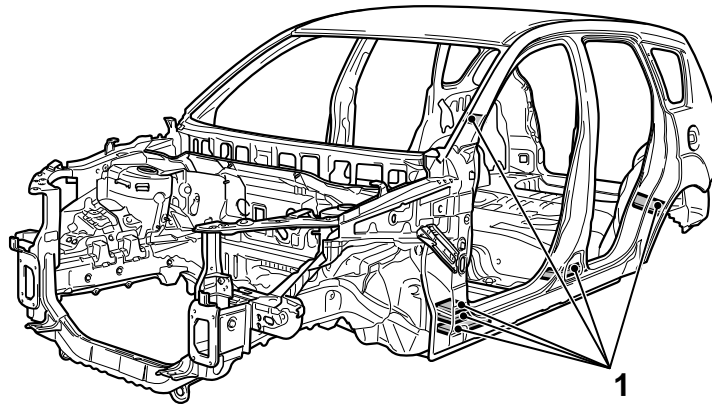
1. Foam noise absorbing materials have been adopted to the upper and lower sections of the front pillar, center pillar lower section, rear pillar, gate pillar, and wheel house arch inside to shield from external noise.

2. Urethane foam has been inserted into the quarter inner lower section to shield from external noise.

CAUTION

The foam materials may burn when heated. Always observe the following instructions:

- Never use a gas burner to burn the areas where foam materials are used.
- When cutting the parts which are provided with foam materials, ensure to use tools (air saw, etc.) that do not generate fire.
- If there are residual foam materials remaining on the cut section (body side), remove the foam materials from periphery of the welding area before welding work.



ZB6010200000

STIFFENER AND DAMP SHEET APPLICATION LOCATIONS

M40100000181USA0000010000

Spray-type stiffeners on the inner side of the side outer panel, sheet-type stiffeners on the inner side of the liftgate outer panel, and a damp sheet on the

interior side of the front deck have been used for higher surface rigidity.

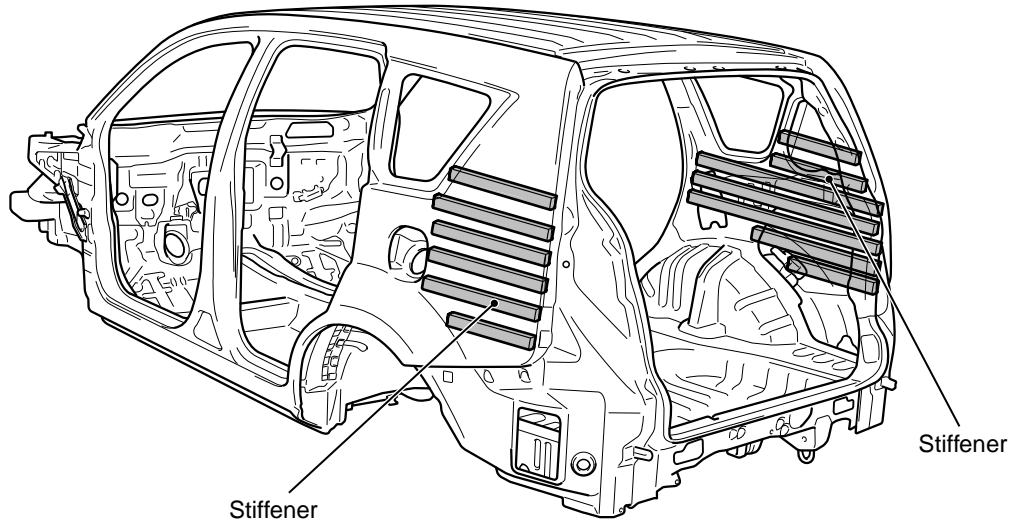
NOTE:

*The spray-type stiffener is mainly made from epoxy resin and contains filler. The sheet-type one is additionally reinforced with glass fiber. The stiffener

is cured by heating in the paint drying furnace during the production.

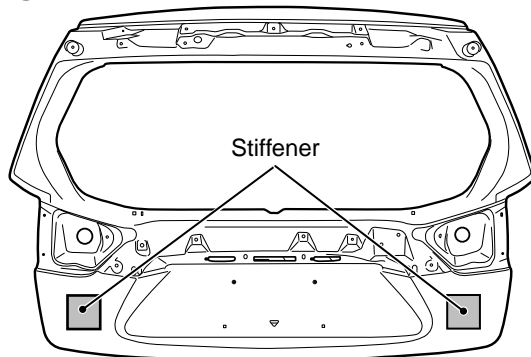
*No spare part of the stiffener for repair is available in the field. If the stiffener is damaged, replace it together with the panel.

*The spare part for the panel provided with the stiffener has a sheet-type stiffener affixed.

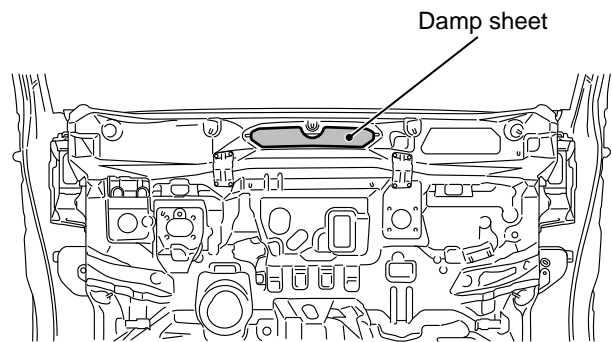


ZB5004220000

Liftgate



Front deck



ZB5004210000

MEMO