

GROUP 80B

SPLICE LOCATIONS

CONTENTS

HOW TO READ SPLICE LOCATIONS	80B-2	DASH PANEL.....	80B-6
INDEX.....	80B-3	STEERING COLUMN.....	80B-7
ENGINE COMPARTMENT.....	80B-4	FLOOR AND ROOF.....	80B-8
ENGINE AND TRANSAXLE <2.4L ENGINE>.....	80B-5	DOOR.....	80B-9
ENGINE AND TRANSAXLE <3.0L ENGINE>.....	80B-5	LIFTGATE.....	80B-9

HOW TO READ SPlice LOCATIONS

M1802000100454

"Splice locations" describes splice points of each wiring harness on an actual vehicle. Some variations are included in one splice location. Accordingly, some locations may not be applicable for individual vehicles.

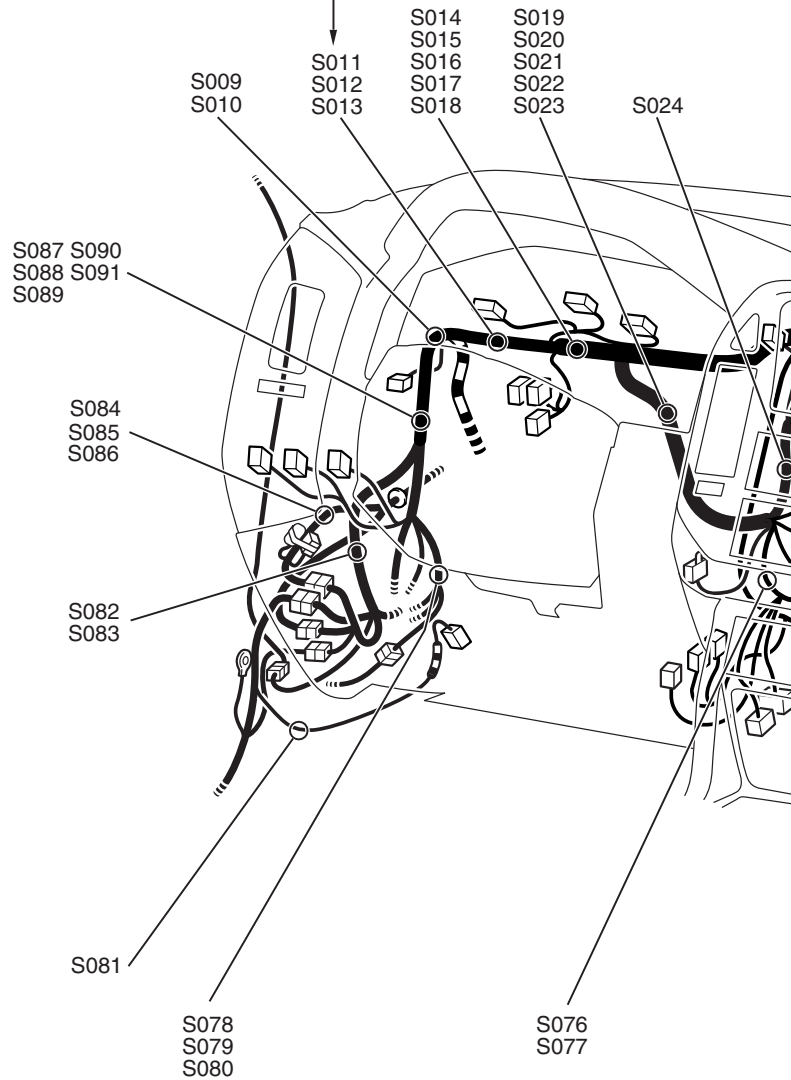
Indicates a splice point number.

The splice point numbers are identical to those in "CIRCUIT DIAGRAMS," making them easy to use. In addition, the splice point numbers are usually numbered clockwise.

Example: S 013

Sequential number

Prefix meaning splice point



ACX02177 AC

INDEX

M1802000901475

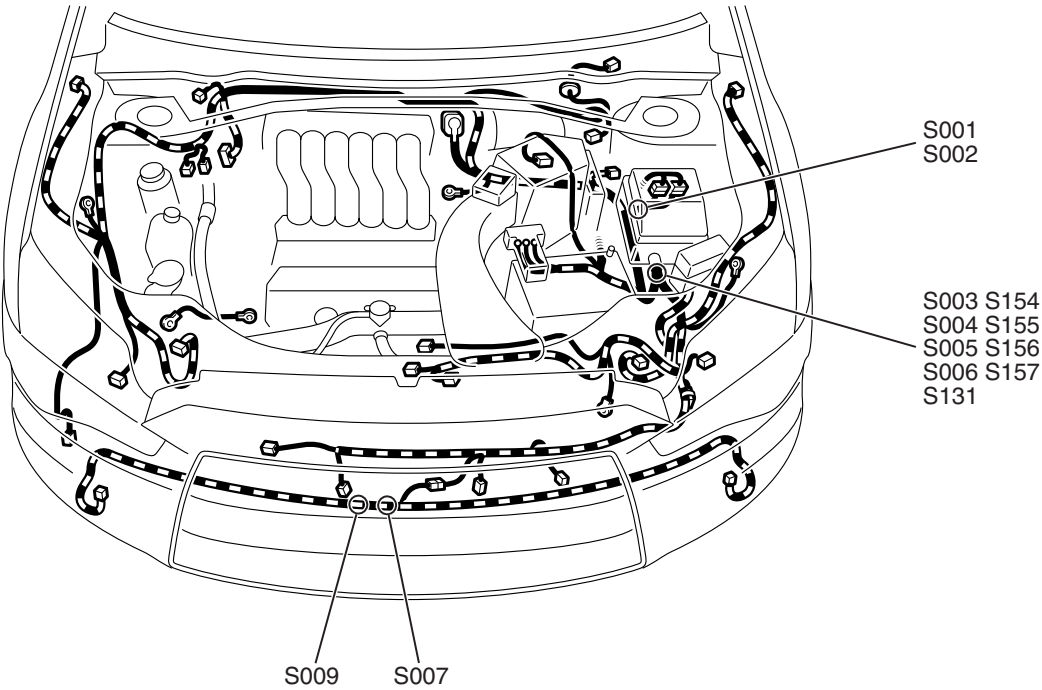
This index shows the page numbers where the splice locations are.

Splice location No.	Page	Splice location No.	Page	Splice location No.	Page	Splice location No.	Page
S001	P.80B-4	S002	P.80B-4	S003	P.80B-4	S004	P.80B-4
S005	P.80B-4	S006	P.80B-4	S007	P.80B-4	S009	P.80B-4
S011	P.80B-5	S012	P.80B-5	S013	P.80B-5	S014	P.80B-5
S015	P.80B-5	S016	P.80B-5	S017	P.80B-5	S019	P.80B-5
S020	P.80B-5	S021	P.80B-6	S022	P.80B-6	S024	P.80B-6
S025	P.80B-6	S026	P.80B-6	S027	P.80B-6	S028	P.80B-6
S029	P.80B-6	S030	P.80B-6	S031	P.80B-6	S032	P.80B-6
S033	P.80B-6	S035	P.80B-6	S036	P.80B-6	S037	P.80B-6
S038	P.80B-6	S039	P.80B-6	S040	P.80B-6	S041	P.80B-6
S042	P.80B-6	S043	P.80B-6	S044	P.80B-6	S046	P.80B-6
S048	P.80B-6	S051	P.80B-6	S052	P.80B-6	S054	P.80B-6
S055	P.80B-6	S056	P.80B-6	S057	P.80B-6	S058	P.80B-6
S059	P.80B-6	S060	P.80B-6	S061	P.80B-6	S062	P.80B-6
S063	P.80B-6	S064	P.80B-6	S065	P.80B-6	S066	P.80B-6
S067	P.80B-6	S068	P.80B-6	S069	P.80B-6	S070	P.80B-6
S072	P.80B-6	S073	P.80B-6	S074	P.80B-6	S075	P.80B-6
S076	P.80B-8	S077	P.80B-8	S078	P.80B-8	S079	P.80B-8
S080	P.80B-8	S082	P.80B-8	S084	P.80B-8	S086	P.80B-8
S087	P.80B-8	S090	P.80B-8	S091	P.80B-8	S093	P.80B-8
S094	P.80B-8	S097	P.80B-8	S098	P.80B-8	S099	P.80B-8
S100	P.80B-8	S101	P.80B-8	S102	P.80B-8	S104	P.80B-8
S105	P.80B-8	S108	P.80B-8	S109	P.80B-8	S110	P.80B-8
S111	P.80B-8	S113	P.80B-8	S114	P.80B-8	S117	P.80B-9
S118	P.80B-6	S119	P.80B-9	S120	P.80B-9	S121	P.80B-6
S122	P.80B-9	S123	P.80B-9	S124	P.80B-9	S125	P.80B-9
S126	P.80B-6	S127	P.80B-6	S131	P.80B-4	S132	P.80B-5
S133	P.80B-5	S135	P.80B-5	S136	P.80B-5	S137	P.80B-5
S138	P.80B-5	S139	P.80B-5	S140	P.80B-5	S141	P.80B-6
S142	P.80B-6	S143	P.80B-6	S144	P.80B-8	S145	P.80B-8
S146	P.80B-7	S147	P.80B-7	S148	P.80B-7	S149	P.80B-5
S150	P.80B-5	S152	P.80B-8	S154	P.80B-4	S155	P.80B-4
S156	P.80B-4	S157	P.80B-4	S158	P.80B-5	S159	P.80B-6
S160	P.80B-6	S161	P.80B-6	S162	P.80B-6	S163	P.80B-6
S164	P.80B-6	S165	P.80B-6	S166	P.80B-6	S167	P.80B-6

Splice location No.	Page	Splice location No.	Page	Splice location No.	Page	Splice location No.	Page
S168	P.80B-6	S169	P.80B-6	S170	P.80B-6	S171	P.80B-6
S172	P.80B-6	S173	P.80B-6	S174	P.80B-8	S175	P.80B-8
S176	P.80B-8	S177	P.80B-9				

ENGINE COMPARTMENT

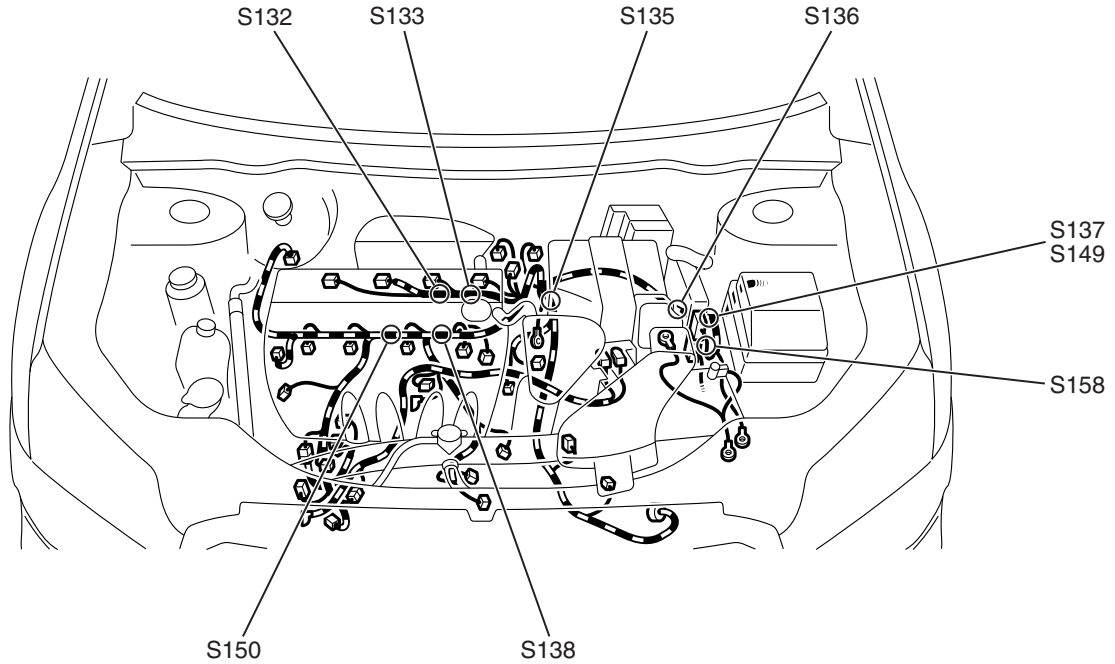
M1802000201067



AC900780AB

ENGINE AND TRANSAXLE <2.4L ENGINE>

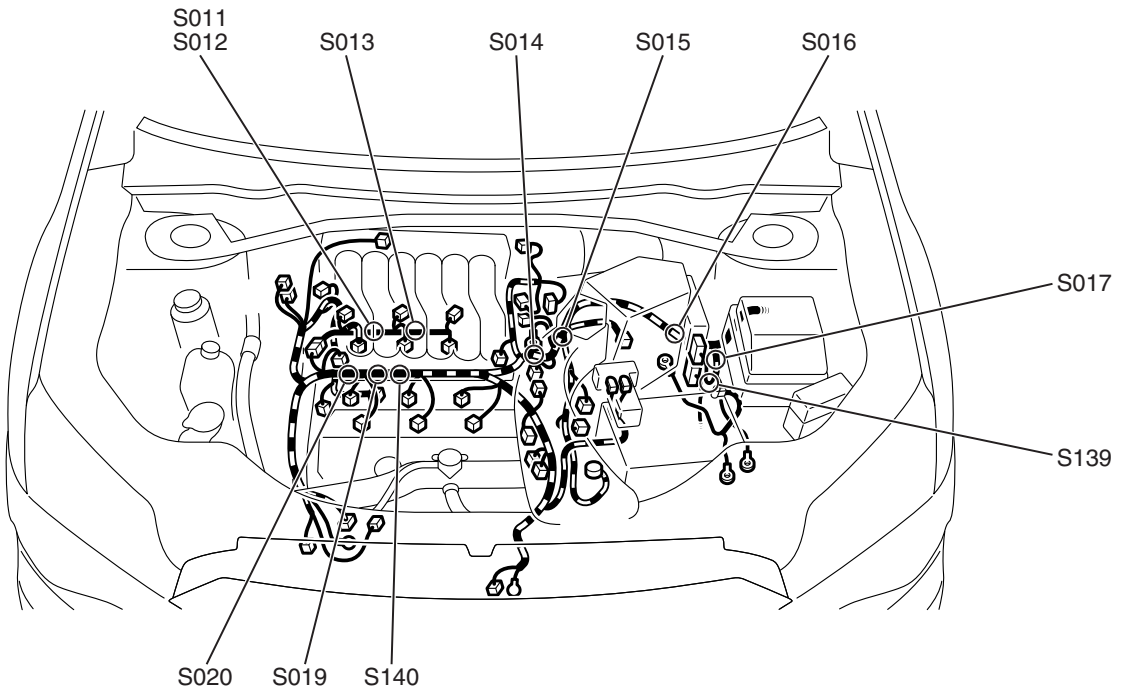
M1802001401097



AC900781AB

ENGINE AND TRANSAXLE <3.0L ENGINE>

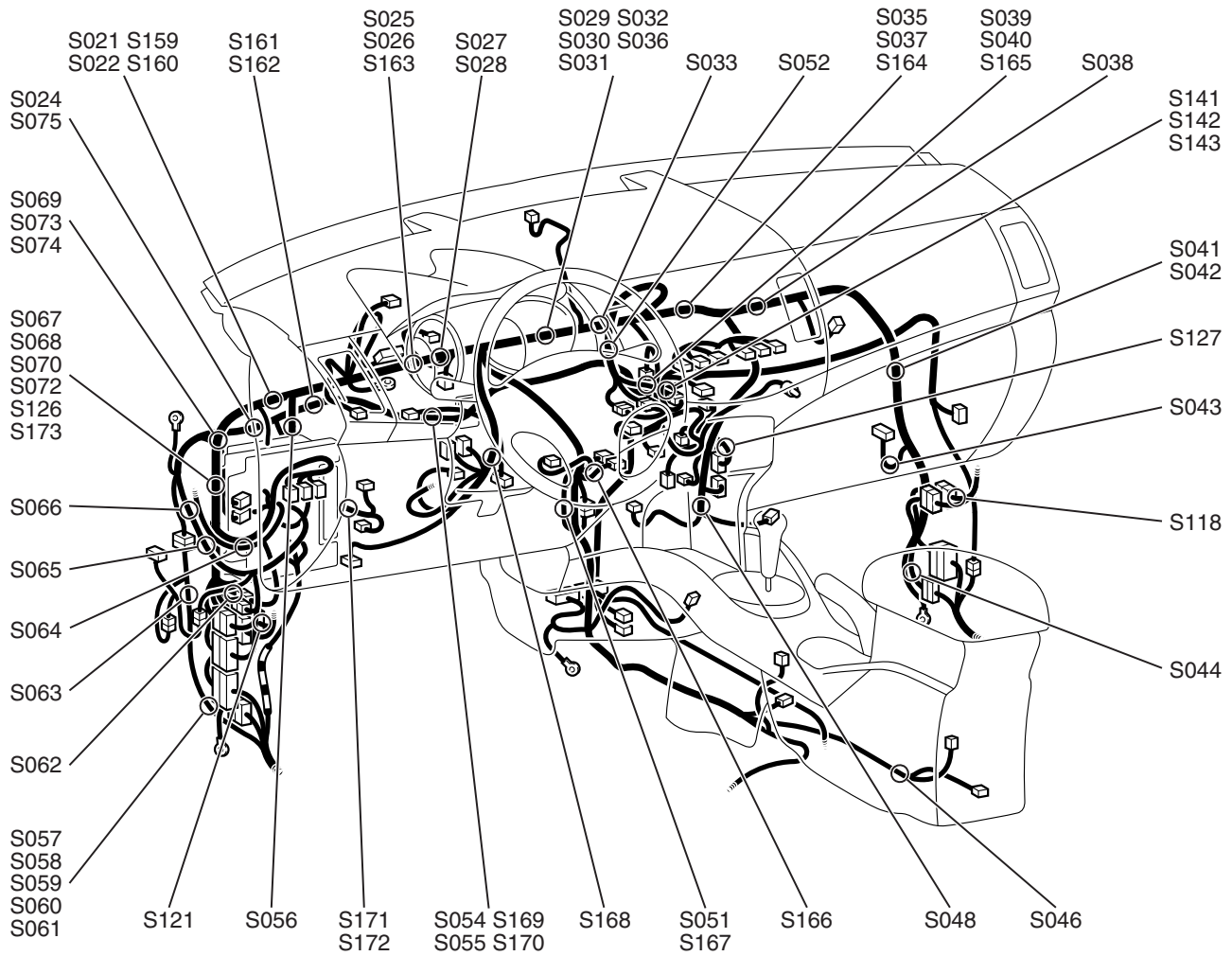
M1802001401105



AC900782AB

DASH PANEL

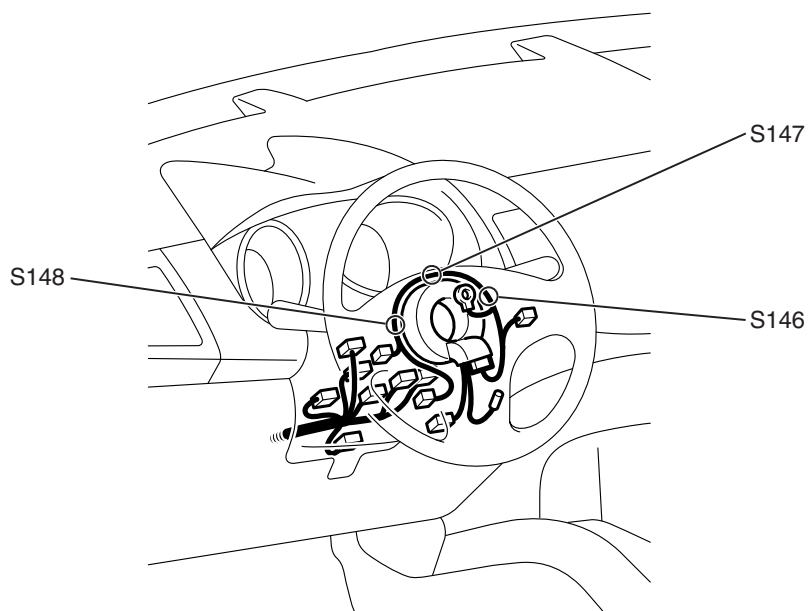
M1802000301291



AC900783AB

STEERING COLUMN

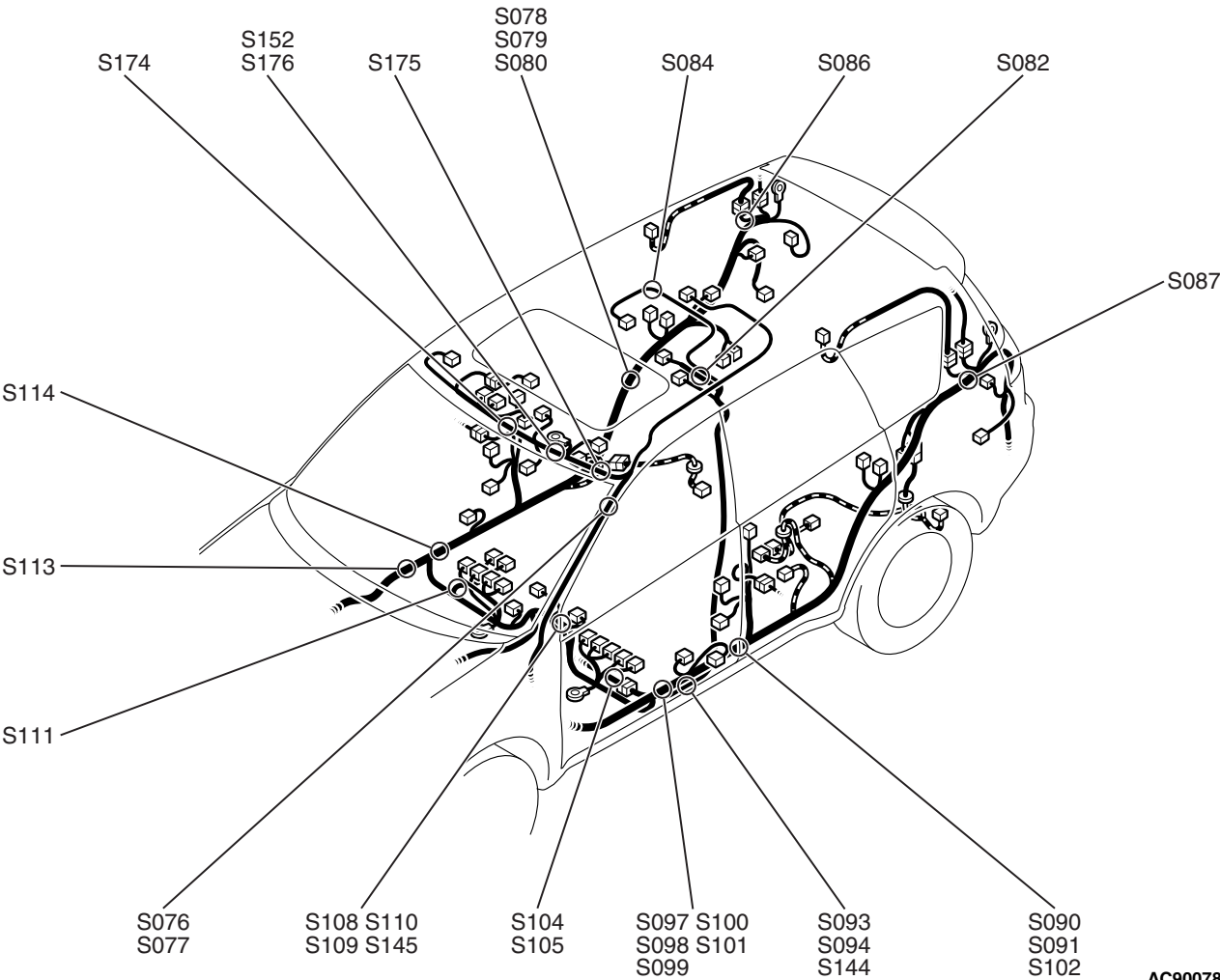
M1802000400251



AC900784AB

FLOOR AND ROOF

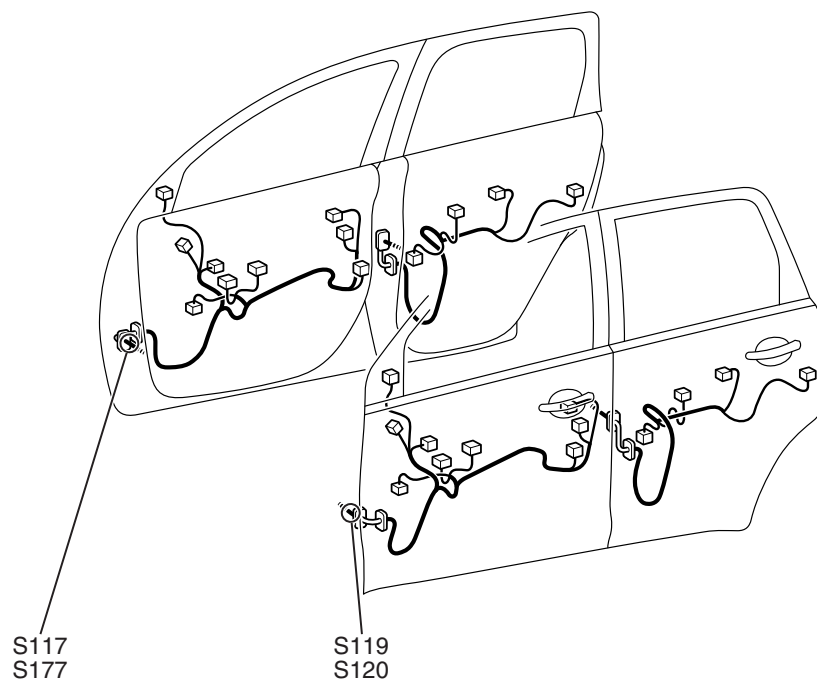
M1802001201048



AC900785AB

DOOR

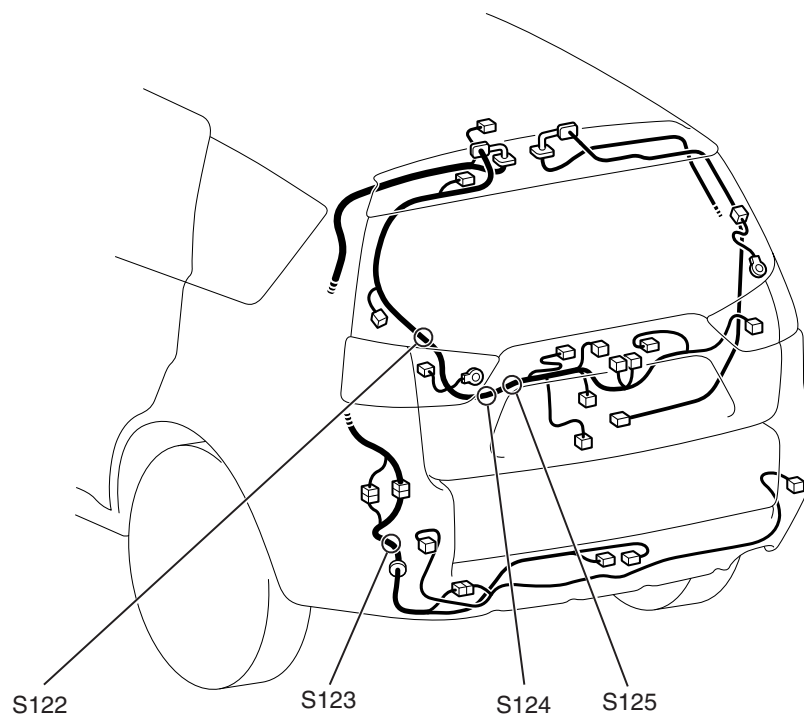
M1802000800840



AC709512AC

LIFTGATE

M1802001300365



AC803228AB

NOTES