

GROUP 52A

INTERIOR

CONTENTS

ADHESIVE	52A-2	SEAT ASSEMBLY*	52A-17
SPECIAL TOOL	52A-2	FRONT SEAT ASSEMBLY	52A-17
INSTRUMENT PANEL ASSEMBLY*	52A-2	REMOVAL AND INSTALLATION	52A-17
REMOVAL AND INSTALLATION	52A-2	INSPECTION	52A-19
DISASSEMBLY AND ASSEMBLY	52A-6	DISASSEMBLY AND ASSEMBLY	52A-19
FLOOR CONSOLE ASSEMBLY	52A-7	INSPECTION	52A-21
FRONT FLOOR CONSOLE ASSEMBLY ..	52A-7	SECOND SEAT ASSEMBLY	52A-23
REMOVAL AND INSTALLATION	52A-7	SECOND SEAT ADJUSTMENT	52A-23
REAR FLOOR CONSOLE ASSEMBLY ...	52A-8	REMOVAL AND INSTALLATION	52A-24
REMOVAL AND INSTALLATION	52A-8	DISASSEMBLY AND ASSEMBLY	52A-25
TRIMS	52A-9	INSPECTION	52A-37
INTERIOR TRIM	52A-9	THIRD SEAT ASSEMBLY	52A-37
REMOVAL AND INSTALLATION	52A-9	REMOVAL AND INSTALLATION	52A-37
DOOR TRIM	52A-11	DISASSEMBLY AND ASSEMBLY	52A-38
REMOVAL AND INSTALLATION	52A-11	SEAT BELT*	52A-39
LIFTGATE TRIM	52A-14	FRONT SEAT BELT	52A-39
REMOVAL AND INSTALLATION	52A-14	REMOVAL AND INSTALLATION	52A-39
INTERIOR MIRROR	52A-16	INSPECTION	52A-40
		REAR SEAT BELT	52A-41
		REMOVAL AND INSTALLATION	52A-41

WARNINGS REGARDING SERVICING OF SUPPLEMENTAL RESTRAINT SYSTEM (SRS) EQUIPPED VEHICLES

WARNING

- *Improper service or maintenance of any component of the SRS, or any SRS-related component, can lead to personal injury or death to service personnel (from inadvertent firing of the air bag) or to the driver and passenger (from rendering the SRS inoperative).*
- *Service or maintenance of any SRS component or SRS-related component must be performed only at an authorized MITSUBISHI dealer.*
- *MITSUBISHI dealer personnel must thoroughly review this manual, and especially its GROUP 52B - Supplemental Restraint System (SRS) before beginning any service or maintenance of any component of the SRS or any SRS-related component.*

NOTE

The SRS includes the following components: SRS air bag control unit, SRS warning light, front impact sensors, air bag module, side-airbag module, curtain air bag module, side impact sensors, seat belt pre-tensioners, clock spring, and interconnecting wiring. Other SRS-related components (that may have to be removed/installed in connection with SRS service or maintenance) are indicated in the table of contents by an asterisk (*).

ADHESIVE

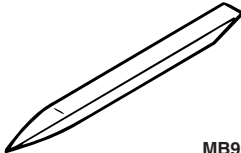
M1521000500063

Application	Brand name
Interior mirror	Interior mirror adhesive kit MU-150Kit [MZ100425]

NOTE: The symbol in parentheses indicates a part number.

SPECIAL TOOL

M1521000600576

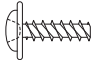
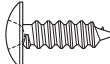
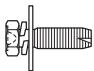
Tool	Tool number and name	Supersession	Application
 MB990784	MB990784 Ornament remover	General service tool	Removal of switch, trim, etc.

INSTRUMENT PANEL ASSEMBLY

REMOVAL AND INSTALLATION

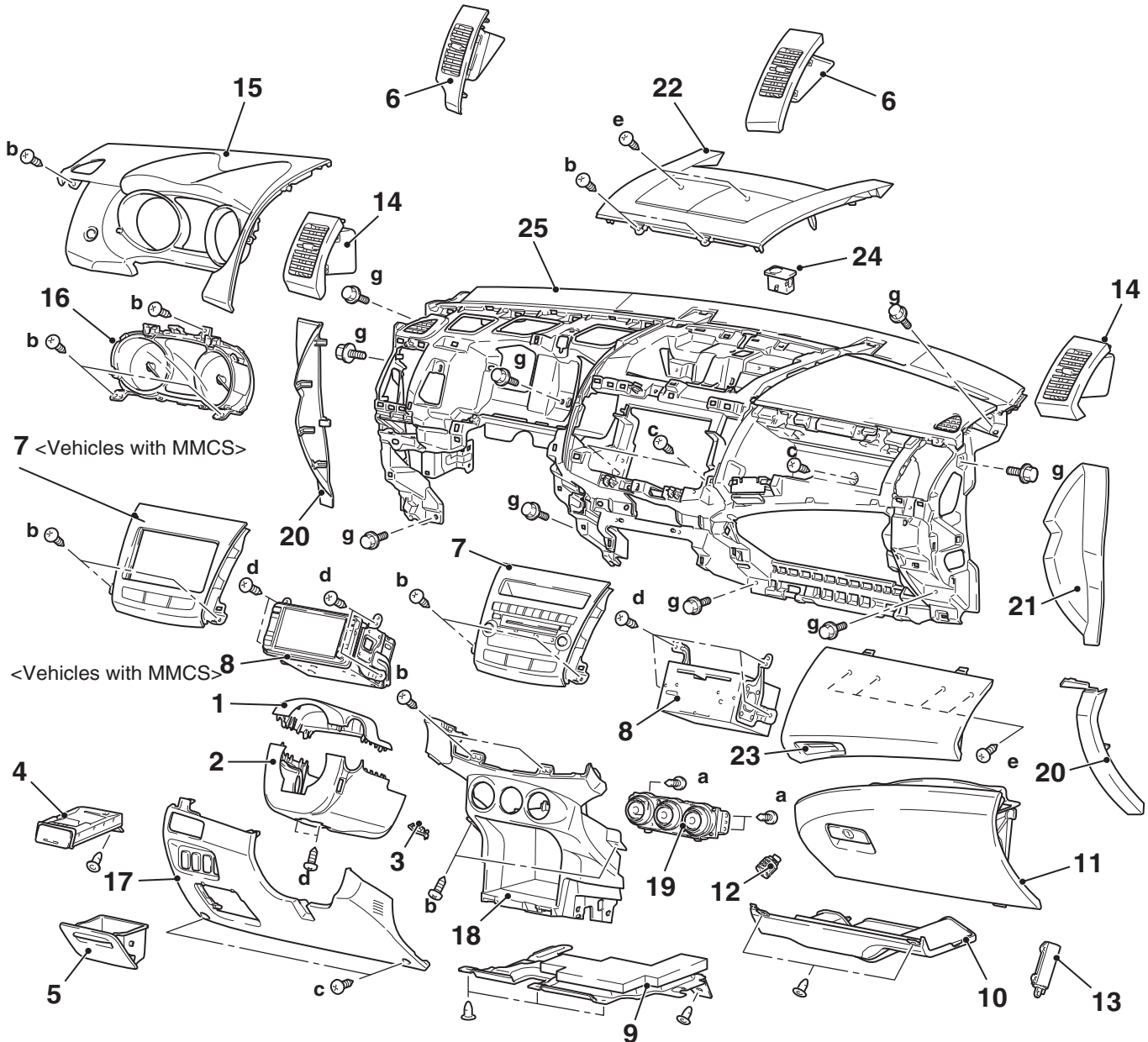
M1521001702390

The following bolts and screws are used for installing the instrument panel: The bolts and screws are indicated by symbols in the illustrations in sections "REMOVAL AND INSTALLATION" and "DISASSEMBLY AND ASSEMBLY."

Name	Symbol	Dimensions mm (screw diameter × screw length)	Color	Shape
Tapping screw	a	5 × 12	-	 AC104436
	b	5 × 16	-	
	c	5 × 12	Black	 AC104450
	d	5 × 14	-	
	e	5 × 16	-	
	f	5 × 16	Black	
	g	5 × 20	-	
Washer-assembled bolt	h	6 × 16	-	 AC104430

CAUTION

- For the removal of the front passenger's air bag module, refer to GROUP 52B –Service Precautions P.52B-24, Driver's and Front Passenger's Air Bag Module, and Clock Spring P.52B-443 before operation.
- Do not subject SRS-ECU to any shocks when removing or installing the instrument panel.



AC701256AB

Removal steps

1. Steering column upper cover
2. Steering column lower cover
3. Ignition key cover
4. Cup holder assembly
5. Side box
6. Center air outlet
7. Center panel assembly
8. Center panel box <vehicles with audio> or 6 disc CD autochanger & AM/FM radio

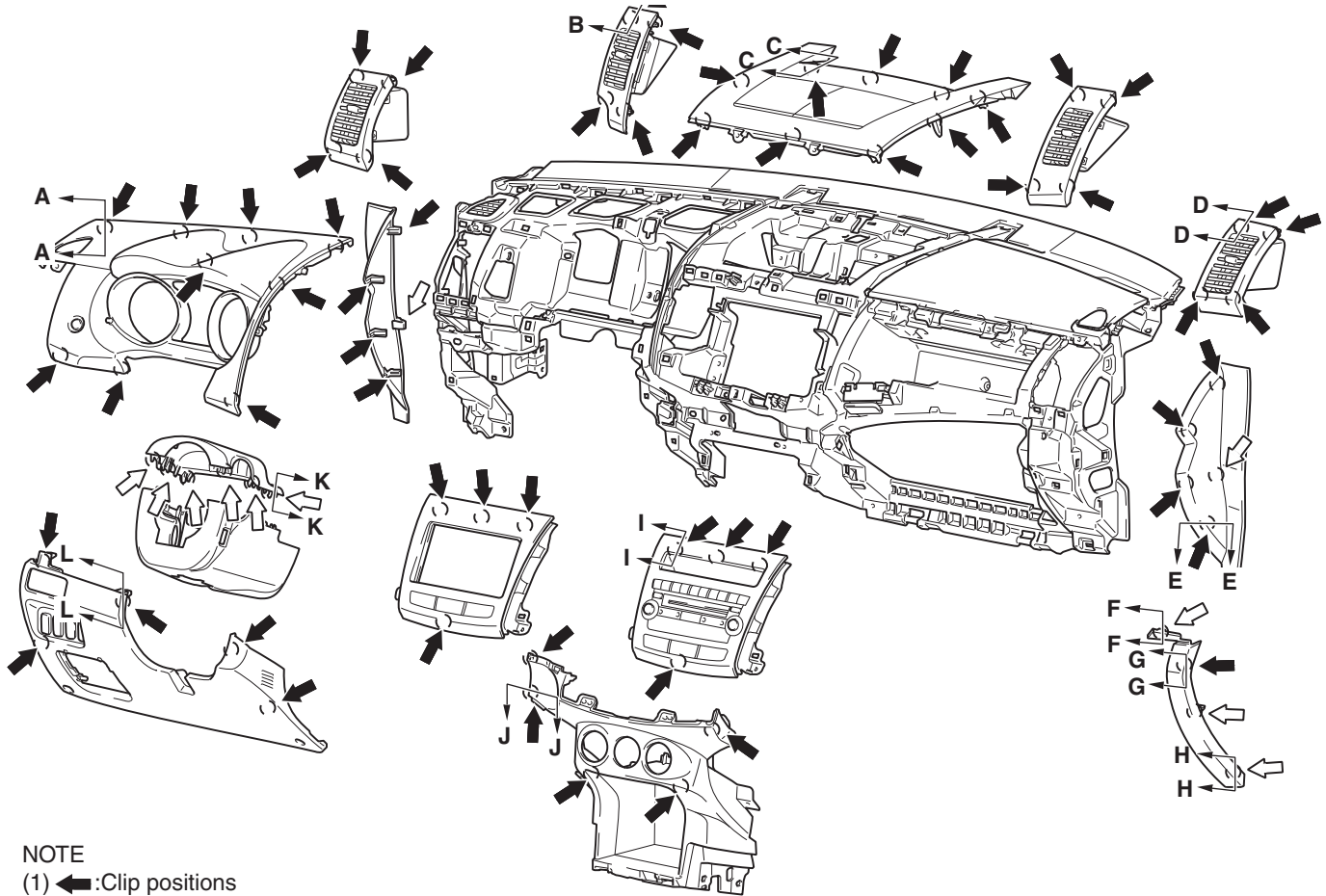
Removal steps (Continued)

9. Bottom cover assembly (driver's seat)
10. Bottom cover assembly (front passenger's seat)
 - Glove box lamp connector
11. Glove box assembly
12. Glove box lock cylinder
13. Glove box damper
14. Side air outlet
15. Combination meter bezel
16. Combination meter assembly

Removal steps (Continued)

17. Side lower panel assembly
 - Lower side cover (Refer to [P.52A-7.](#))
18. Center lower panel
19. A/C control panel
20. Side cover
21. Glove box side panel
22. Center upper panel
23. Upper glove box assembly
 - Steering wheel (Refer to GROUP 37 –Steering Wheel [P.37-28.](#))
24. Solar sensor
25. Instrument panel assembly

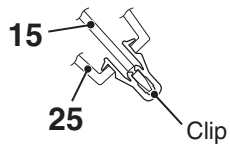
CLIP AND CLAW POSITIONS



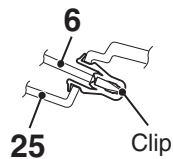
NOTE

- (1) :Clip positions
(2) :Claw positions

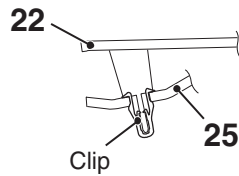
Section A – A



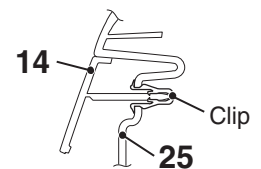
Section B – B



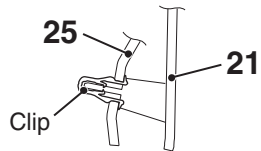
Section C – C



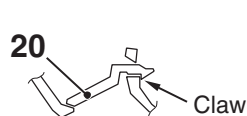
Section D – D



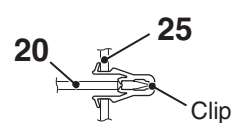
Section E – E



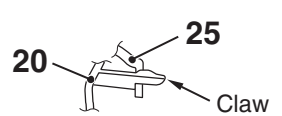
Section F – F



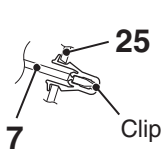
Section G – G



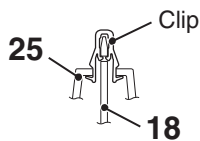
Section H – H



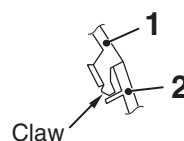
Section I – I



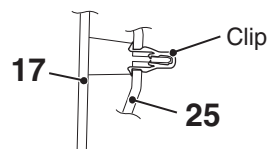
Section J – J



Section K – K



Section L – L

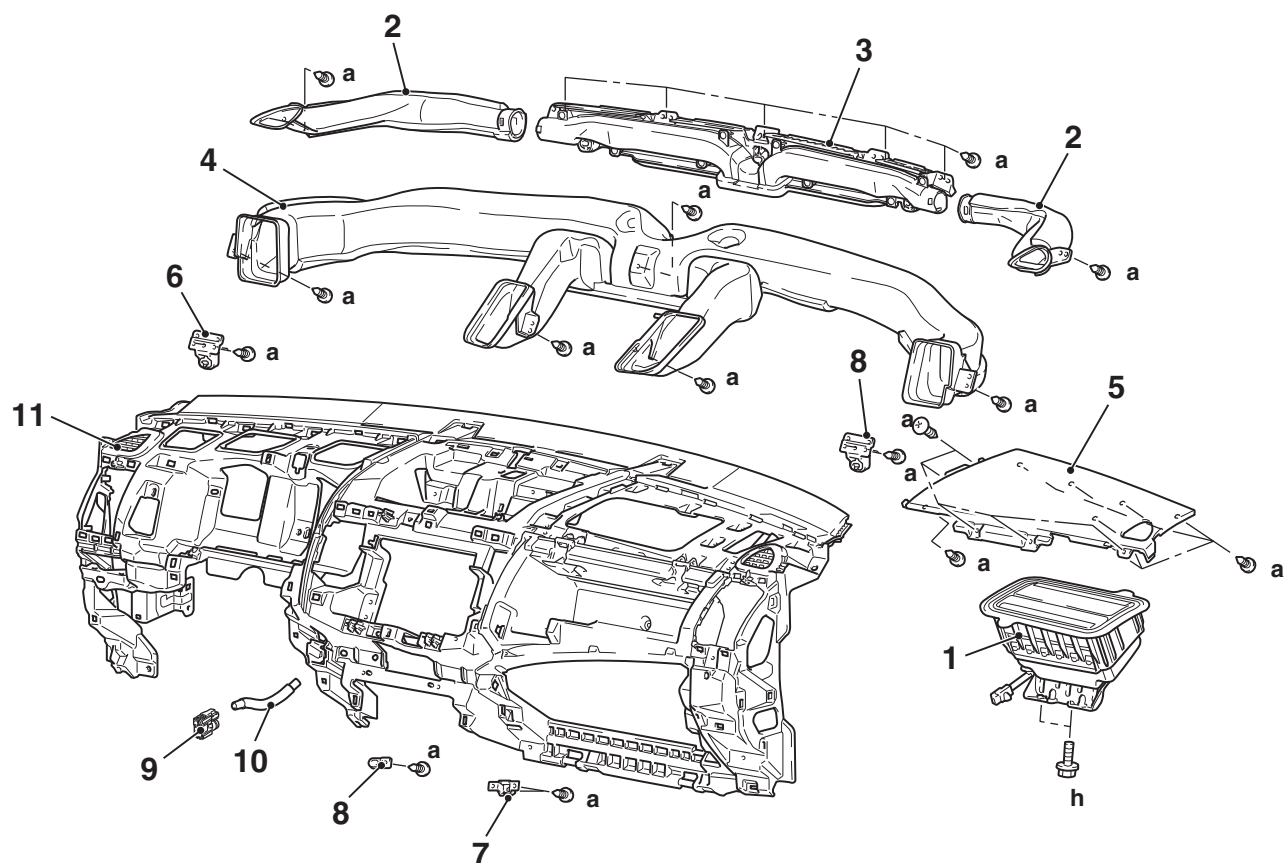


AC701257AC

NOTE: Each number in the illustration indicates a part number.

DISASSEMBLY AND ASSEMBLY

M1521001900699



AC701258 AB

Disassembly steps

1. Front passenger's seat air bag module (Refer to GROUP 52B, – Driver's and Front Passenger's Air Bag Modules and Clock Spring [P.52B-443.](#))
2. Side defroster nozzle
3. Center defroster nozzle
4. Ventilation air distribution

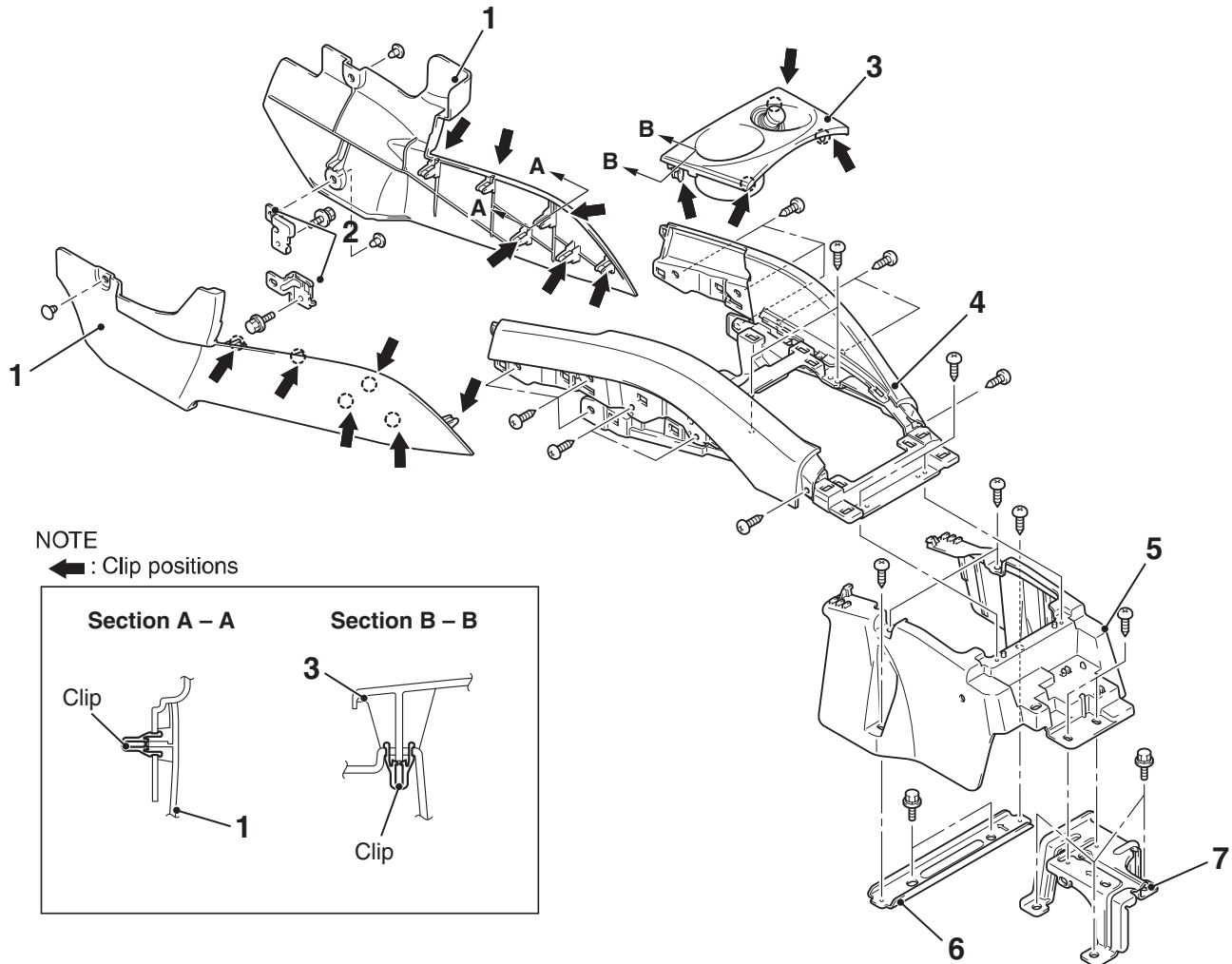
Disassembly steps (Continued)

5. Front passenger's air bag lid assembly
6. Instrument holder
7. Glove box light bracket
8. Wiring harness bracket
9. Interior temperature sensor
10. Aspirator hose
11. Instrument panel

FLOOR CONSOLE ASSEMBLY

FRONT FLOOR CONSOLE ASSEMBLY REMOVAL AND INSTALLATION

M1521005200539



AC701197AC

Removal steps

1. Lower side cover
2. Front floor console bracket
 - Cigarette Lighter connector
3. Front floor console panel
 - Rear floor console assembly (Refer to [P.52A-8.](#))
4. Front floor console assembly

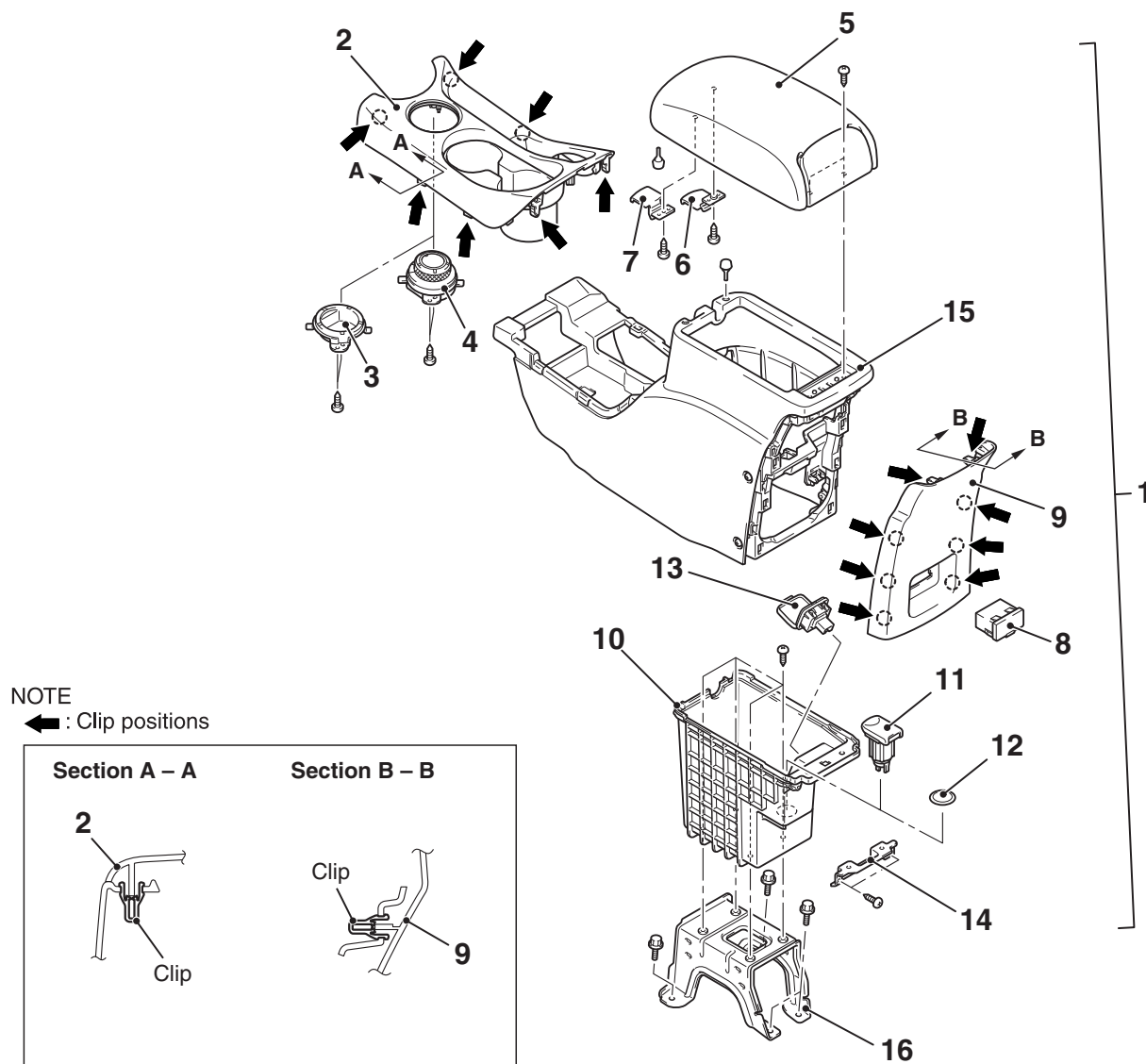
Removal steps (Continued)

- Interior transmission antenna (front) (Refer to GROUP 42B, Exterior Transmission Antenna, Interior Transmission Antenna Assembly, Receiver Antenna Module [P.42B-209.](#))
- 5. Front floor console base
- 6. Front floor console base bracket
- 7. Front floor console mid bracket

REAR FLOOR CONSOLE ASSEMBLY

REMOVAL AND INSTALLATION

M1521005700523



AC709780AB

<<A>>

Removal steps

1. Rear floor console assembly
 - AWD selector switch connector
2. Rear floor console front panel assembly
3. Floor console plug <FWD>
4. Drive mode selector <AWD> (Refer to GROUP 27C –Drive mode selector removal and installation [P.27C-93](#))
5. Armrest assembly
6. Armrest box lever
7. Rear floor console box lever
8. VTR adapter assembly

<<A>>

<<A>>

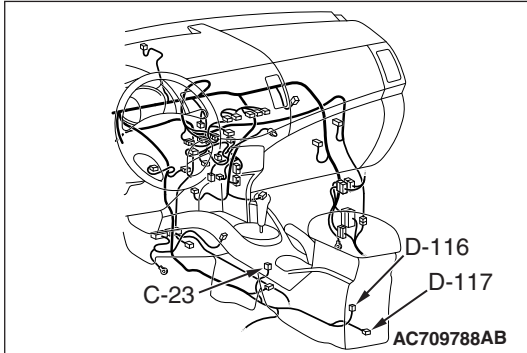
Removal steps (Continued)

9. Rear floor console rear panel
10. Rear floor console box
 - USB adapter (Refer to GROUP 54A –USB adapter removal and installation [P.54A-692](#))
11. Accessory socket
12. Cigar lighter plug
13. AC inverter socket
14. Rear floor console box bracket
 - Accessory socket connector
 - VTR adapter connector
15. Rear floor console
16. Rear floor console bracket

REMOVAL SERVICE POINT

<<A>> WIRING HARNESS CONNECTOR DISCONNECTION

Disconnect the following wiring harness connectors:



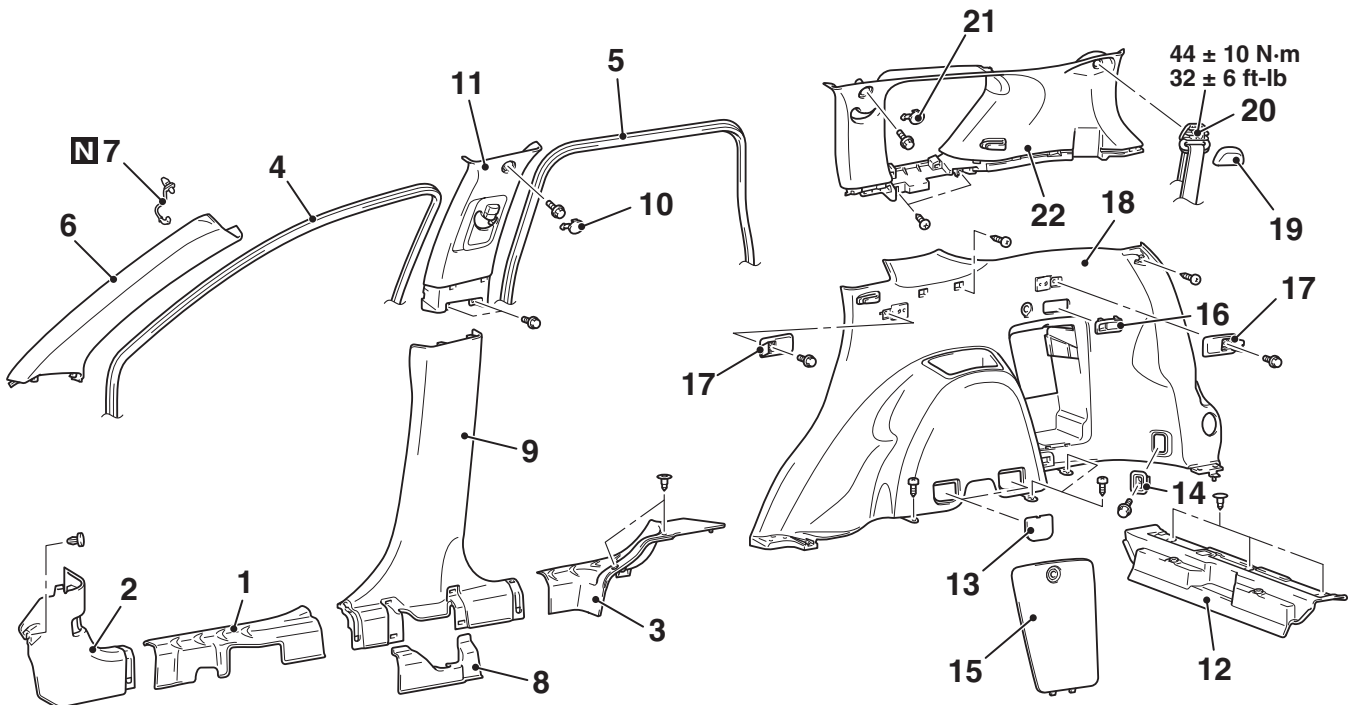
Connector number	Connector name
C-23 (5)	Drive mode selector switch connector
C-116 (2)	Accessory socket connector (Rear floor console)
C-117 (6 – Black)	Audio and video adapter connector

TRIMS

INTERIOR TRIM

REMOVAL AND INSTALLATION

M1521001101878



AC711974AB

Removal steps

1. Front scuff plate
2. Cowl side trim
3. Rear scuff plate
4. Front door opening trim
5. Rear door opening trim
6. Front pillar trim

Removal steps (Continued)

7. Garnish clip
8. Center pillar trim lower cover
 - Seat belt pre-tensioner connector
9. Center pillar trim, lower
10. Center pillar trim upper cap

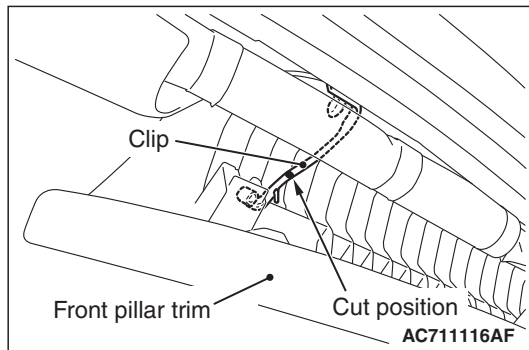
<<A>>

Removal steps (Continued)

11. Center pillar trim, upper
12. Rear end trim
- Quarter trim lower and quarter trim upper removal steps**
13. Maintenance lid
14. Cargo hook assembly
15. Jack lid assembly
16. Tumble switch
17. Utility bar plug
18. Quarter trim, lower
19. Third seat belt sash guide cover
20. Third seat belt mounting bolt
21. Quarter trim upper cap
22. Quarter trim, upper

REMOVAL SERVICE POINT**<<A>>FRONT PILLAR TRIM REMOVAL**

1. Pull down the front pillar trim as shown in the figure.
2. Cut the clip at the cutting position shown in the figure, taking care not to damage the other components.
3. Remove the clip remaining on the front pillar trim, taking care not to scratch the trim.
4. Remove the clip remaining on the vehicle side by breaking it to prevent damage to the flange of the clip mounting hole.

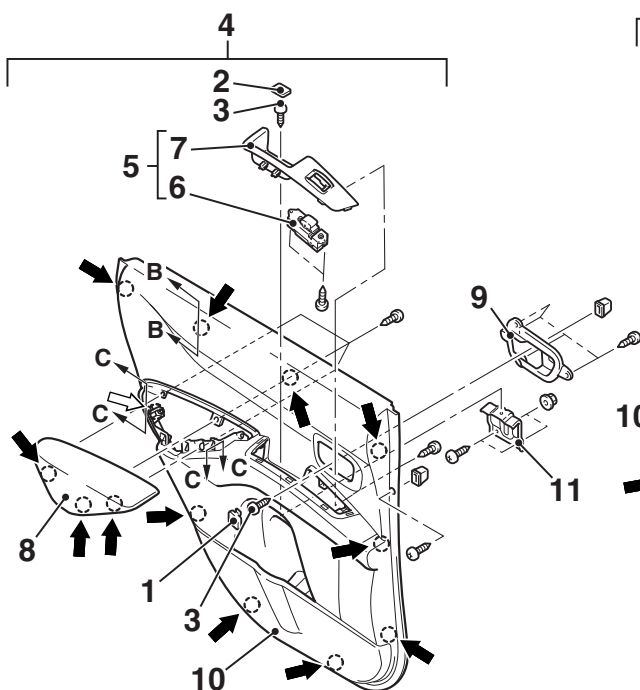


DOOR TRIM

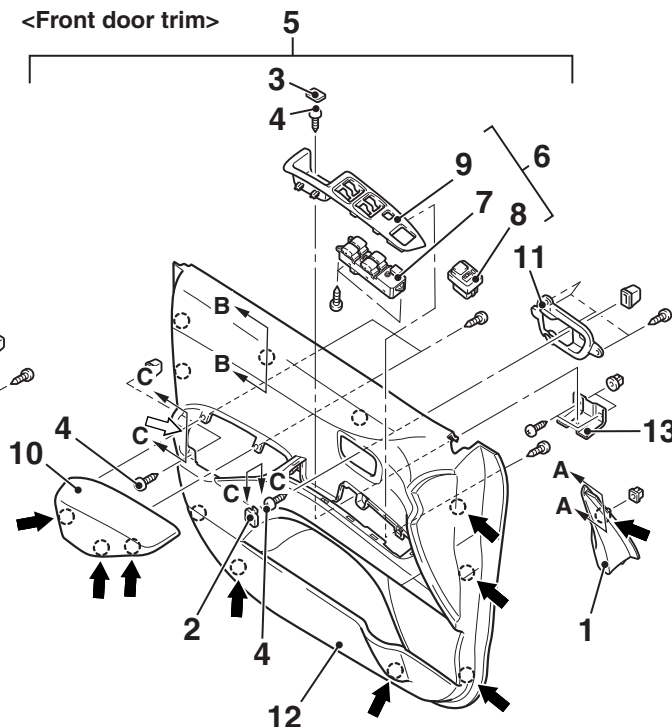
REMOVAL AND INSTALLATION

M1521006401090

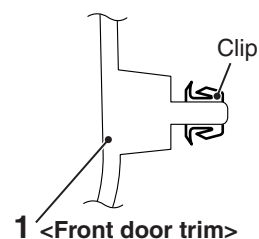
<Rear door trim>



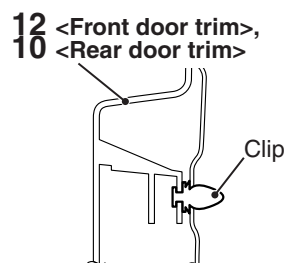
<Front door trim>



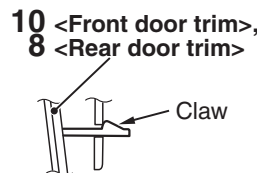
Section A – A



Section B – B



Section C – C



Note

- ➡ : Clip positions
- ➡ : Claw positions

AC709544AC

Front door trim removal steps

- Tweeter connector
- >>B<< 1. Front door sash trim
- <<A>> 2. Inside handle cover cap
- <> 3. Door trim cap
- 4. Front door trim mounting screw
- Power window switch connector, Remote-controlled mirror switch connector (RH)
- <<C>> 5. Front door trim assembly
- 6. Power window switch panel assembly
- >>A<< 7. Power window switch
- 8. Remote-controlled mirror switch (RH)
- 9. Power window switch panel
- 10. Front door armrest
- 11. Inside handle cover

Front door trim removal steps

- 12. Front door trim
- 13. Front door pull handle bracket

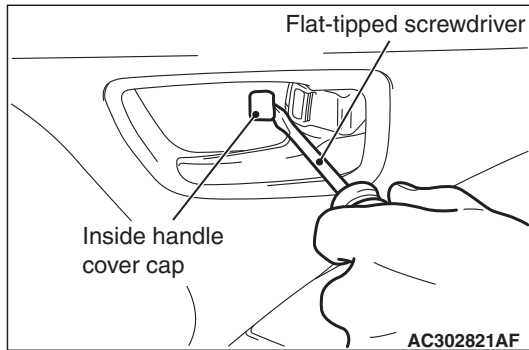
Rear door trim removal steps

- <<A>> 1. Inside handle cover cap
- <> 2. Door trim cap
- 3. Rear door trim mounting screw
- Rear power window sub-switch connector
- <<C>> 4. Rear door trim assembly
- 5. Power window switch panel assembly
- >>A<< 6. Power window switch
- 7. Power window switch panel
- 8. Rear door armrest
- 9. Inside handle cover
- 10. Rear door trim
- <<A>> 11. Rear door armrest bracket

REMOVAL SERVICE POINTS

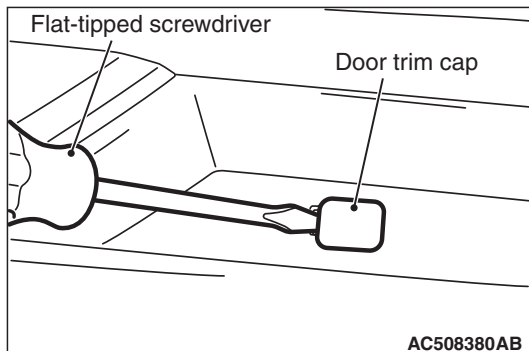
<<A>> INSIDE HANDLE COVER CAP REMOVAL

Insert a flat-tipped (→) screwdriver as shown in the figure to remove the inside handle cover cap.



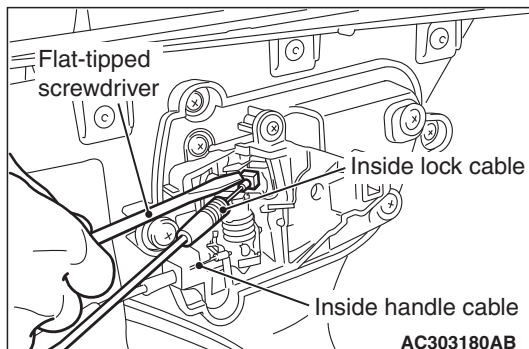
<> DOOR TRIM CAP REMOVAL

Insert a flat-tipped (→) screwdriver as shown in the figure to remove the door trim cap.



<<C>> FRONT/REAR DOOR TRIM REMOVAL

Using a flat-tipped (→) screwdriver as shown in the figure, remove the inside lock cable and the inside handle cable, then remove the door trim.



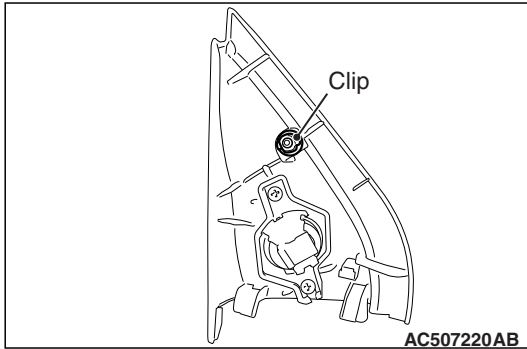
INSTALLATION SERVICE POINTS

>>A<< POWER WINDOW SWITCH INSTALLATION

After the power window switch is installed or replaced, perform learning of the power window fully-closed position (Refer to GROUP 42A –Door Glass and Regulator [P.42A-142](#)).

>>B<< FRONT DOOR SASH TRIM INSTALLATION

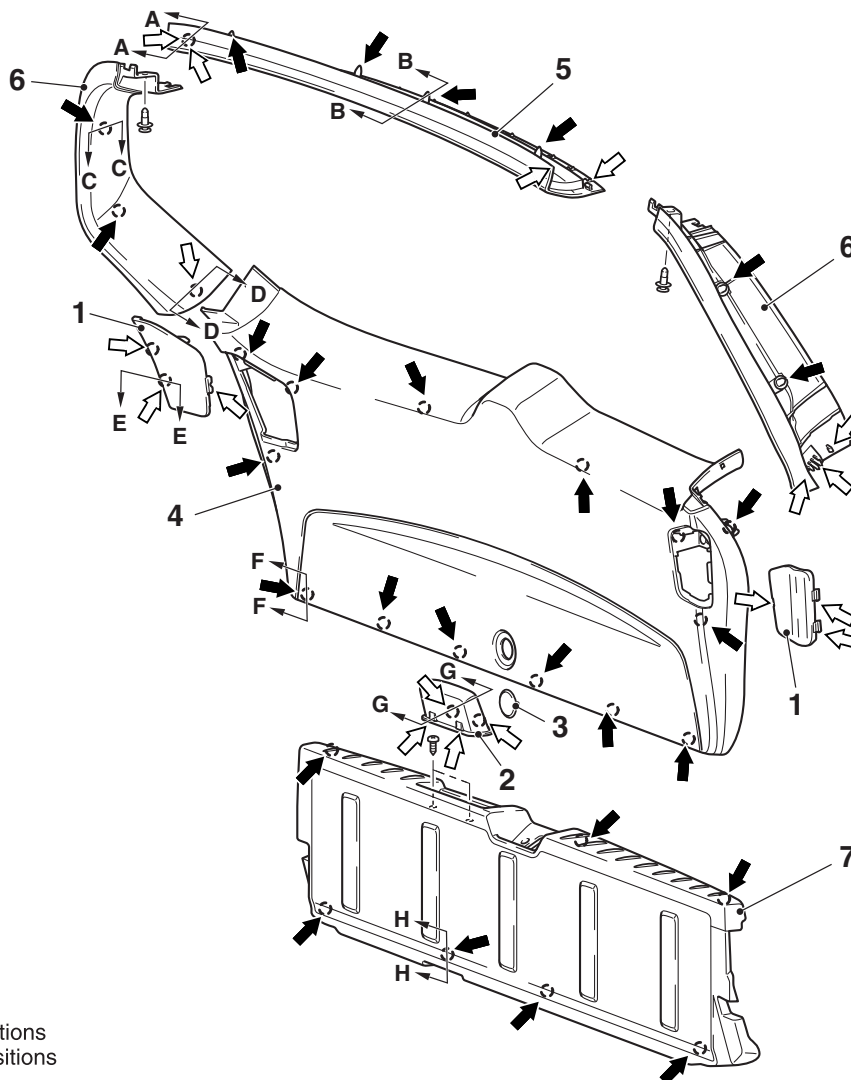
Install it with the clip attached as shown in the figure.



LIFTGATE TRIM

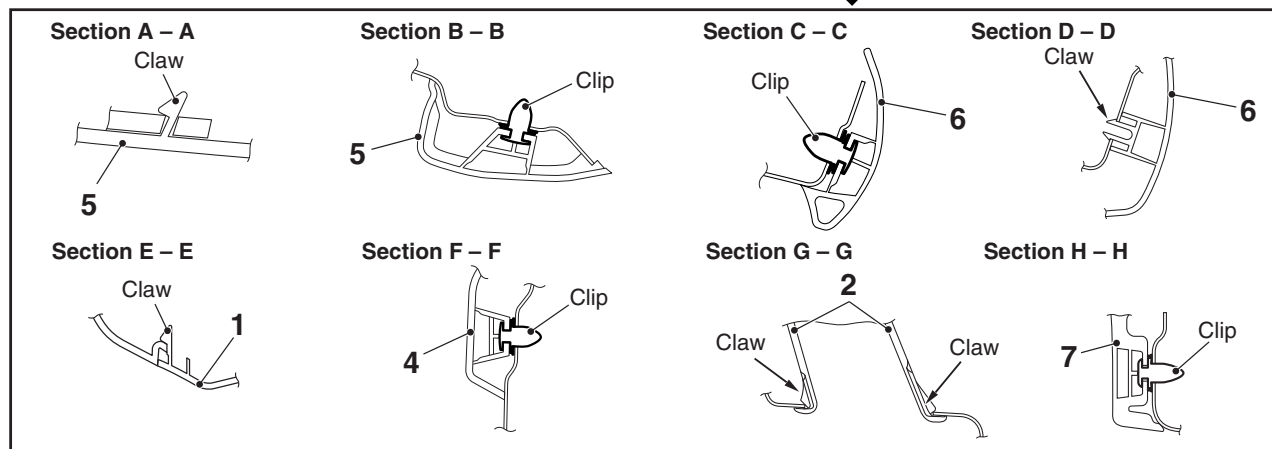
REMOVAL AND INSTALLATION

M1521006500470



NOTE

- (1) : Clip positions
 (2) : Claw positions



AC506882AC

Removal steps

1. Liftgate cover garnish
2. Liftgate pull handle
3. Liftgate trim cap
4. Liftgate trim

Removal steps (Continued)

5. Liftgate upper trim
6. Liftgate opening side trim
7. Lower liftgate trim

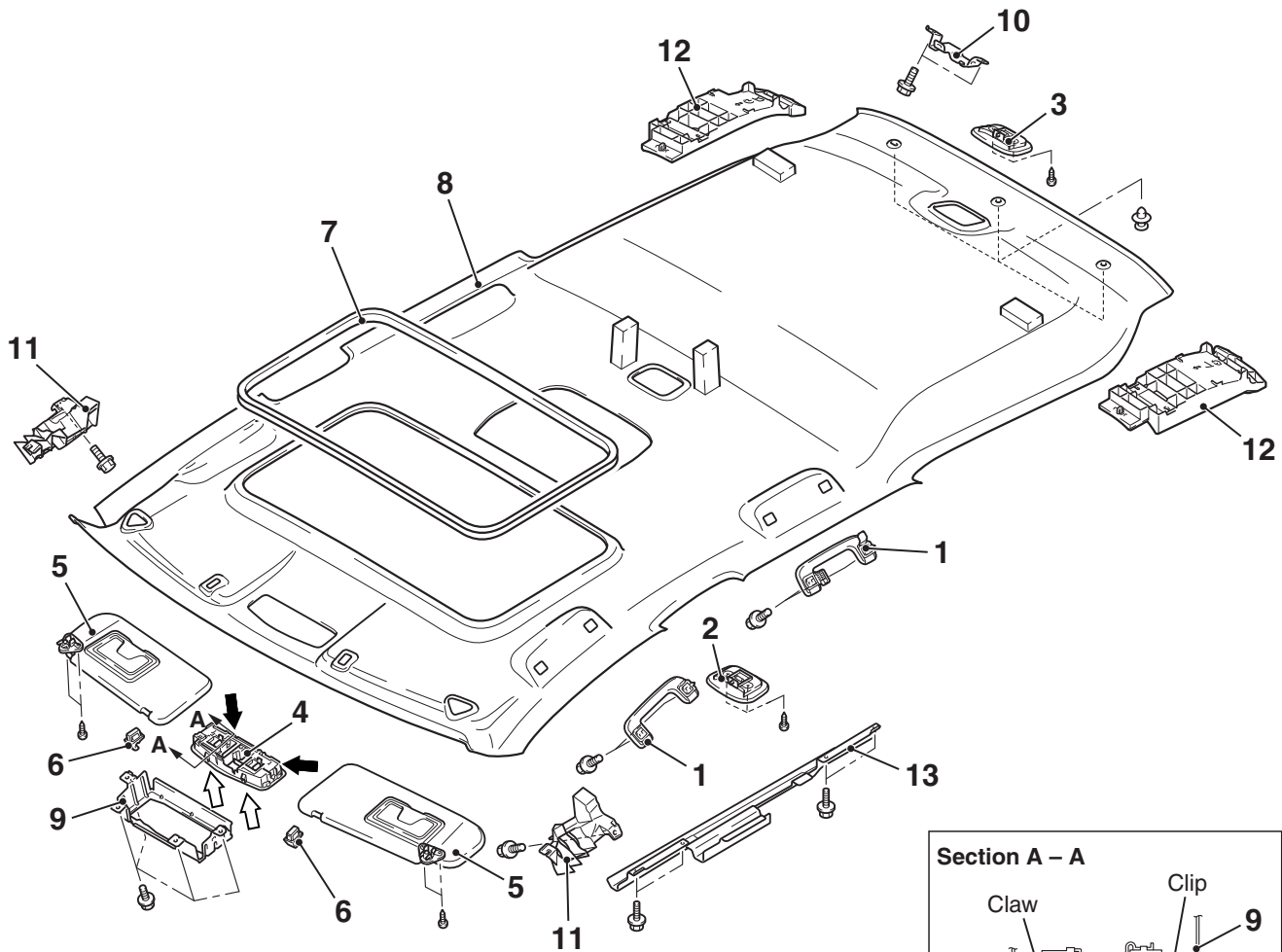
HEADLINING

REMOVAL AND INSTALLATION

M1521001401608

CAUTION

For the removal of the headlining, refer to GROUP 52B –Service Precautions (refer to [P.52B-24](#)) and Curtain Air Bag Module (refer to [P.52B-457](#)).



NOTE

- (1) : Clip positions
(2) : Claw positions

Removal steps

- Quarter trim upper, center pillar trim upper, and front pillar trim (Refer to [P.52A-9](#).) <<A>>
- Rear display (Refer to GROUP 54A –Rear Display [P.54A-732](#)).
- 1. Assist grip
- 2. Rear dome light assembly <>
- 3. Cargo dome light assembly
- Front dome light connector
- Sunroof switch connector <vehicles with sunroof>
- 4. Front dome light assembly

Removal steps (Continued)

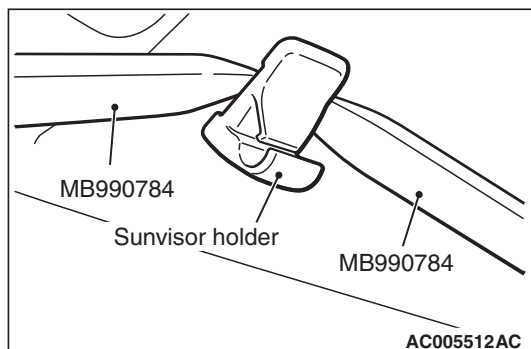
- 5. Sunvisor
- 6. Sunvisor holder
- Theft alarm sensor assembly (Refer to GROUP 54A –Theft alarm [P.54A-884](#).)
- 7. Sunroof lid inner weather strip rear <vehicles with sunroof>
- 8. Headlining
- 9. Front dome light bracket
- 10. Luggage compartment light bracket
- 11. Front energy absorber roof side box

Removal steps (Continued)

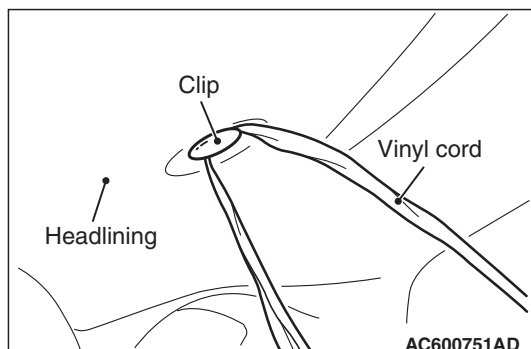
12. Rear energy absorber roof side box
<vehicles without curtain air bag>
13. Front energy absorber roof bracket
<vehicles wit sunroof>

REMOVAL SERVICE POINTS**<<A>> SUN VISOR HOLDER REMOVAL**

Insert the special tools into the sun visor holder from its left and right sides to disengage the claws on the sun visor holder sides.

**<> HEADLINING ASSEMBLY REMOVAL**

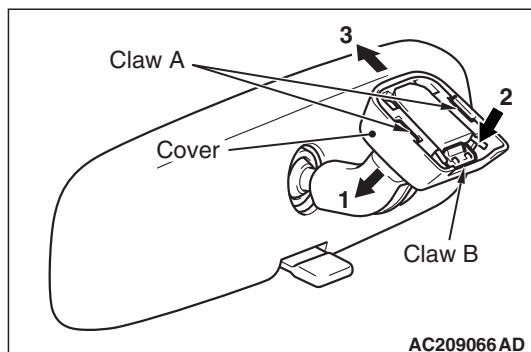
To remove the clip, insert a vinyl cord into a clearance between the clip and the headlining, and pass it around the clip. Then, pull out the clip downwards while pulling the vinyl cord.

**INTERIOR MIRROR**

M1521002600442

REMOVAL SERVICE POINT

1. Disengage the claw A and lower the cover toward arrow 1 direction.
2. Push the claw B toward arrow 2 direction to unlock, and pull out the mirror toward arrow 3 direction.



SEAT ASSEMBLY

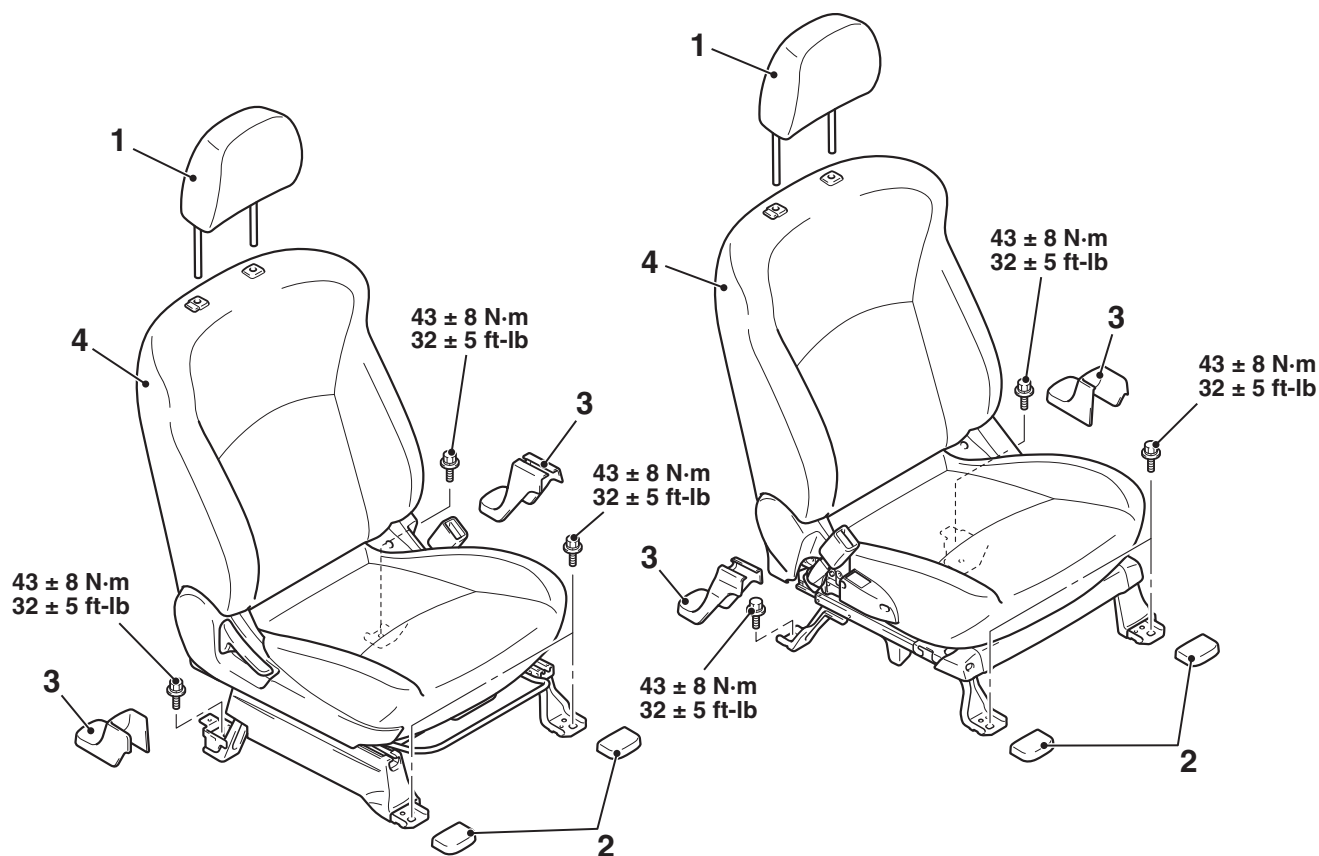
FRONT SEAT ASSEMBLY

REMOVAL AND INSTALLATION

M1522001301864

CAUTION

To remove the front seat assembly of vehicle with side air bag, refer to GROUP 52B - Service Precautions [P.52B-24](#) and Curtain Air Bag Module [P.52B-457](#).



AC701313AC

Removal steps

1. Headrest
2. Front seat anchor cover
3. Rear seat anchor cover

<<A>>

>>A<<

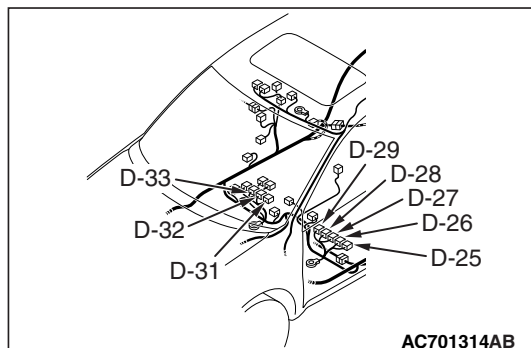
Removal steps (Continued)

- Wiring harness connectors
- 4. Front seat assembly

REMOVAL SERVICE POINT

<<A>> WIRING HARNESS CONNECTOR DISCONNECTION

Disconnect the following wiring harness connectors:

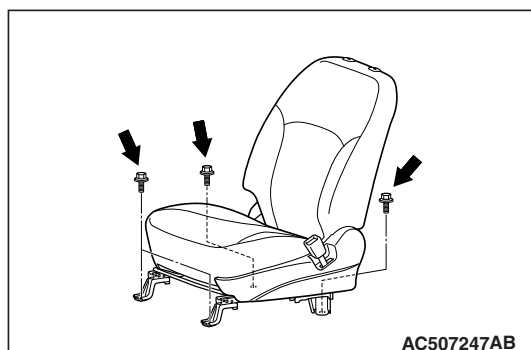


Connector number	Connector name
D-25 (2)	Power seat assembly connector <vehicle with power seat>
D-26 (4 – black)	Heated seat assembly connector (LH) <vehicle with heated seat>
D-27 (4 – gray)	Seat slide sensor connector
D-28 (4 – black)	Seat belt switch connector (Driver's seat)
D-29 (2 – yellow)	Side-airbag module (squib) connector (LH) <vehicles with side-airbag>
D-31 (2 – yellow)	Side-airbag module (squib) connector (RH) <vehicles with side-airbag>
D-32 (2 – black)	Seat belt switch connector (Passenger's seat)
D-33 (4 – black)	Heated seat assembly connector (RH) <vehicle with heated seat>

INSTALLATION SERVICE POINT

>>A<< FRONT SEAT ASSEMBLY INSTALLATION

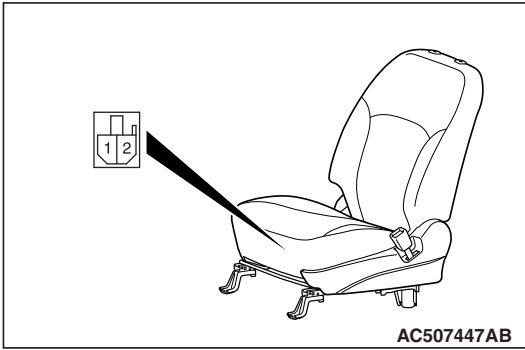
1. Confirm that both the seat slides are locked, and then temporarily tighten all the bolts shown in the figure so that no load is applied to the front seat cushion.
2. Tighten all the bolts to the specified torque.



INSPECTION

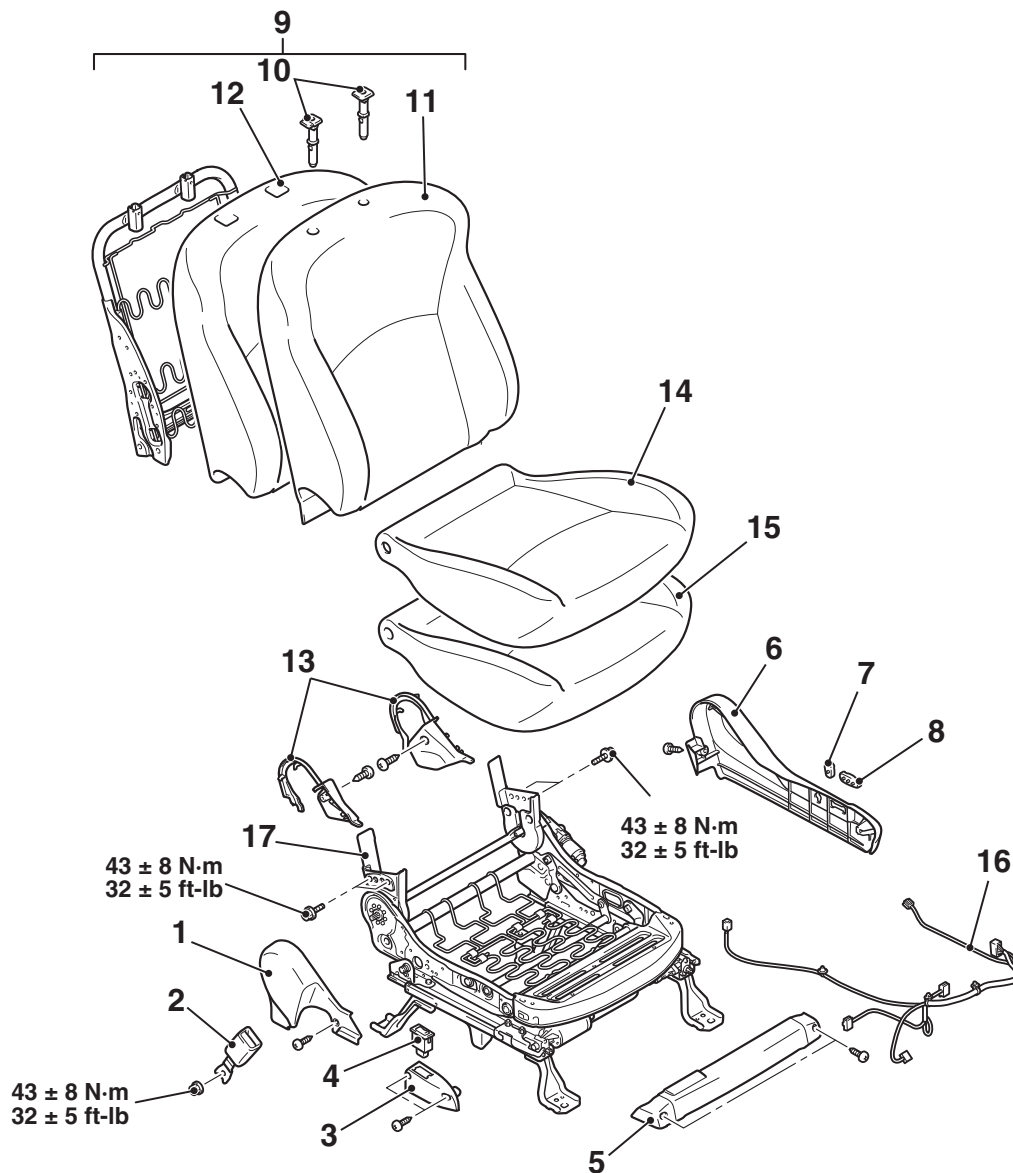
M1522001400200

Connect the + terminal of the battery to the power seat connector terminal No. 2 and the -terminal to terminal No. 1, and check that the power seat works normally.



DISASSEMBLY AND ASSEMBLY (DRIVER'S SEAT)

M1522001501909



AC803390AC

Disassembly steps

1. Hinge cover outer
2. Inner seat belt
3. Heated seat switch cover <vehicle with heated seat>

Disassembly steps (Continued)

4. Heated seat switch <vehicle with heated seat>
5. Under cover
6. Side shield cover

Disassembly steps (Continued)

7. Reclining adjuster lever knob
<vehicle with power seat>
8. Reclining adjuster lever knob
<vehicle with power seat>
9. Seat back assembly
10. Headrest guide

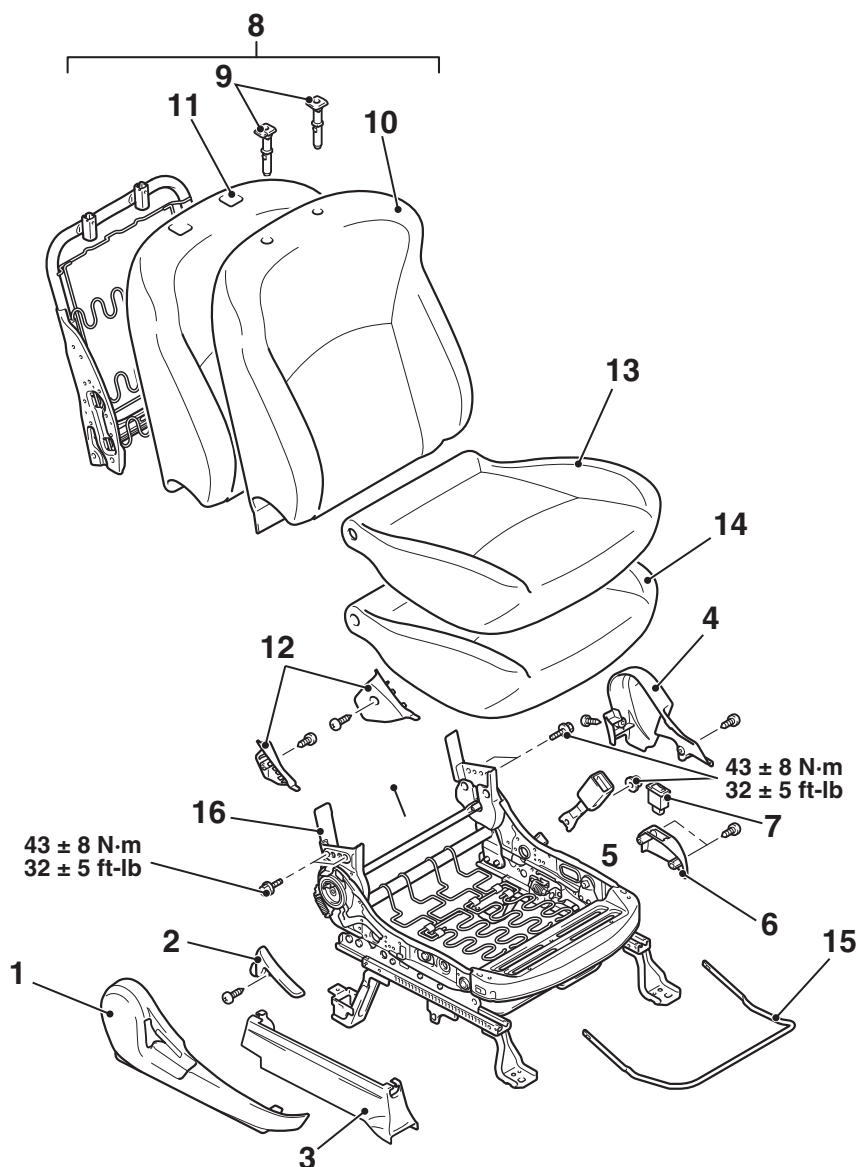
<<A>>

<>

Disassembly steps (Continued)

11. Seat back cover
12. Seat back pad
13. Hinge cover inner
14. Seat cushion cover
15. Seat cushion pad
16. Wiring harness clamp
17. Seat cushion frame assembly

<PASSENGER'S SEAT>



AC803391AB

Disassembly steps

1. Side shield cover
2. Reclining lever
3. Slide adjuster side cover
4. Hinge cover outer
5. Inner seat belt
6. Heated seat switch cover <vehicle with heated seat>
7. Heated seat switch <vehicle with heated seat>
8. Seat back assembly

<<A>>

<>

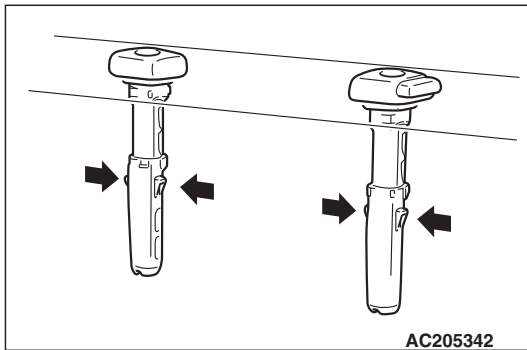
Disassembly steps (Continued)

9. Headrest guide
10. Seat back cover
11. Seat back pad
12. Hinge cover inner
13. Seat cushion cover
14. Seat cushion pad
15. Seat slide adjuster lever
16. Seat cushion frame assembly

DISASSEMBLY SERVICE POINTS

<<A>> HEADREST GUIDE REMOVAL

Peel of the front seatback cover and pad to access the head-restraint guides. Pull off the guides upwards while pushing the tabs (arrows) as shown.



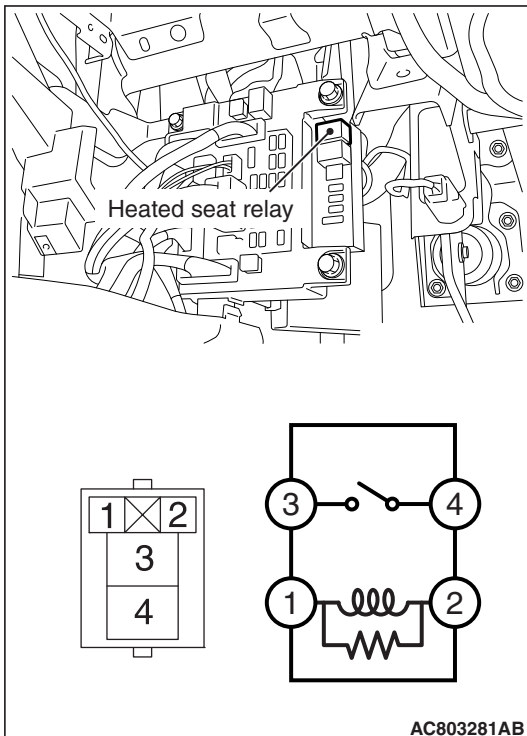
<> SEAT CUSHION FRAME ASSEMBLY REMOVAL

For the vehicles with side air bag, do not remove the side air bag module from the frame.

INSPECTION

M1522001600389

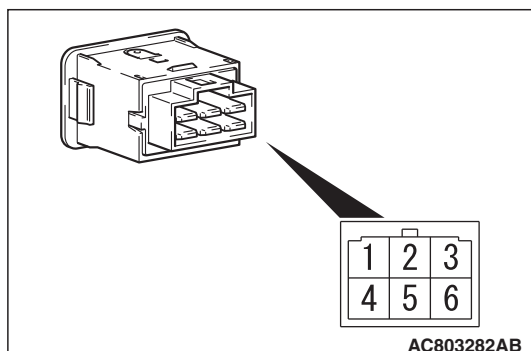
INSPECTION OF THE HEATED SEAT RELAY FOR CONTINUITY



Battery voltage	Terminal number	Normal value
At no energization	3 –4	No continuity
At energization [terminal 2 (+) – terminal 1 (-)]		Continuity exists (2 Ω or less).

**INSPECTION OF THE HEATED SEAT SWITCH
FOR CONTINUITY**

Inspect the heated seat switch for continuity.

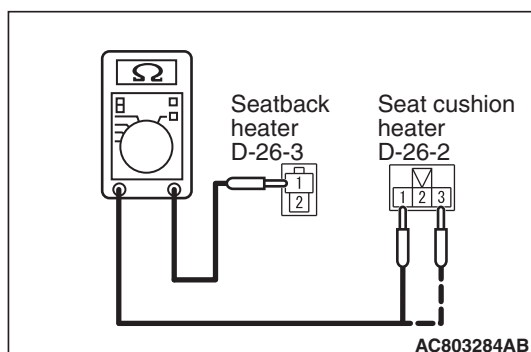


Switch position	Terminal number	Normal value	Note
HI	1 –2	Continuity exists (2 Ω or less).	
	2(+) –6(-)		Indicator
	3 –4		Illumination
OFF	3 –4		Illumination
LOW	2 –5	Continuity exists (2 Ω or less).	
	2(+) –6(-)		Indicator
	3 –4		Illumination

SEAT CUSHION HEATER INSPECTION

Measure the resistance between the terminals.

Standard value: At room temperature 20 ° C (68 ° F)

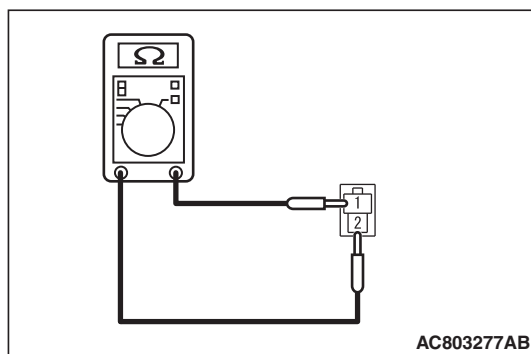


Terminal number	Standard value
D-25-2 (Terminal No.1) – D-25-3 (Terminal No.1)	0.198 to 0.242 Ω
D-25-2 (Terminal No.3) – D-25-3 (Terminal No.1)	4.13 to 5.03 Ω <Thermostat: ON>
	3.93 to 4.79 Ω <Thermostat: OFF>

SEAT BACK HEATER INSPECTION

Measure the resistance between the terminals.

Standard value: At room temperature 20 ° C (68 ° F)

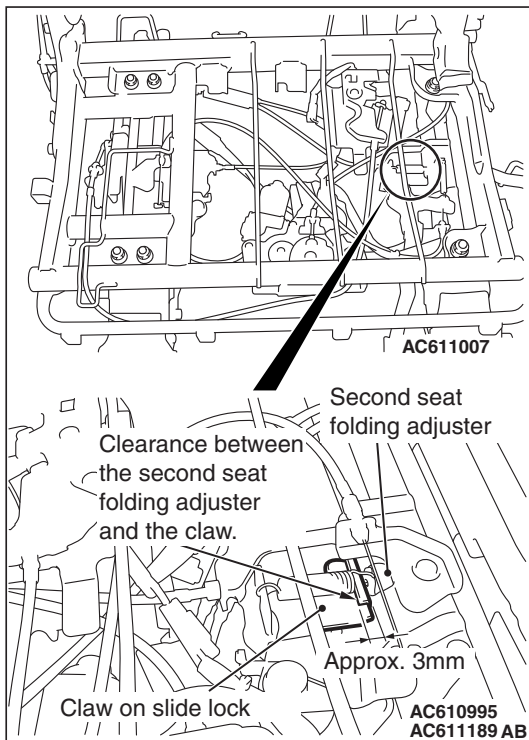
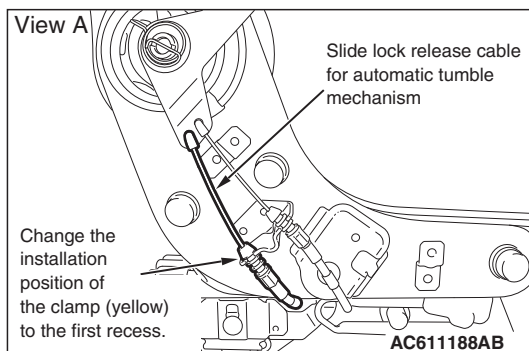
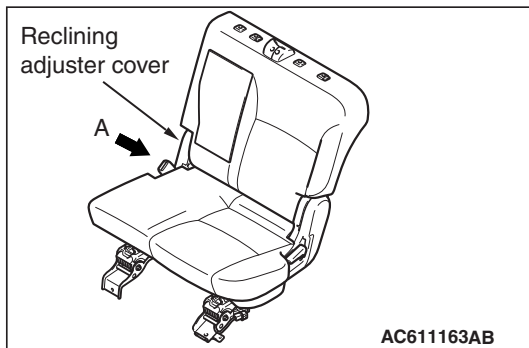


Terminal number	Standard value
1 –2	4.79 to 5.85 Ω

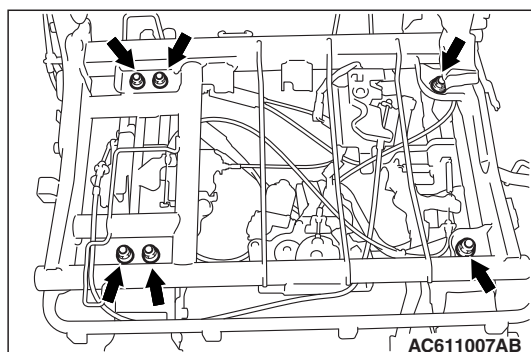
SECOND SEAT ASSEMBLY

SECOND SEAT ADJUSTMENT

M1522005400031



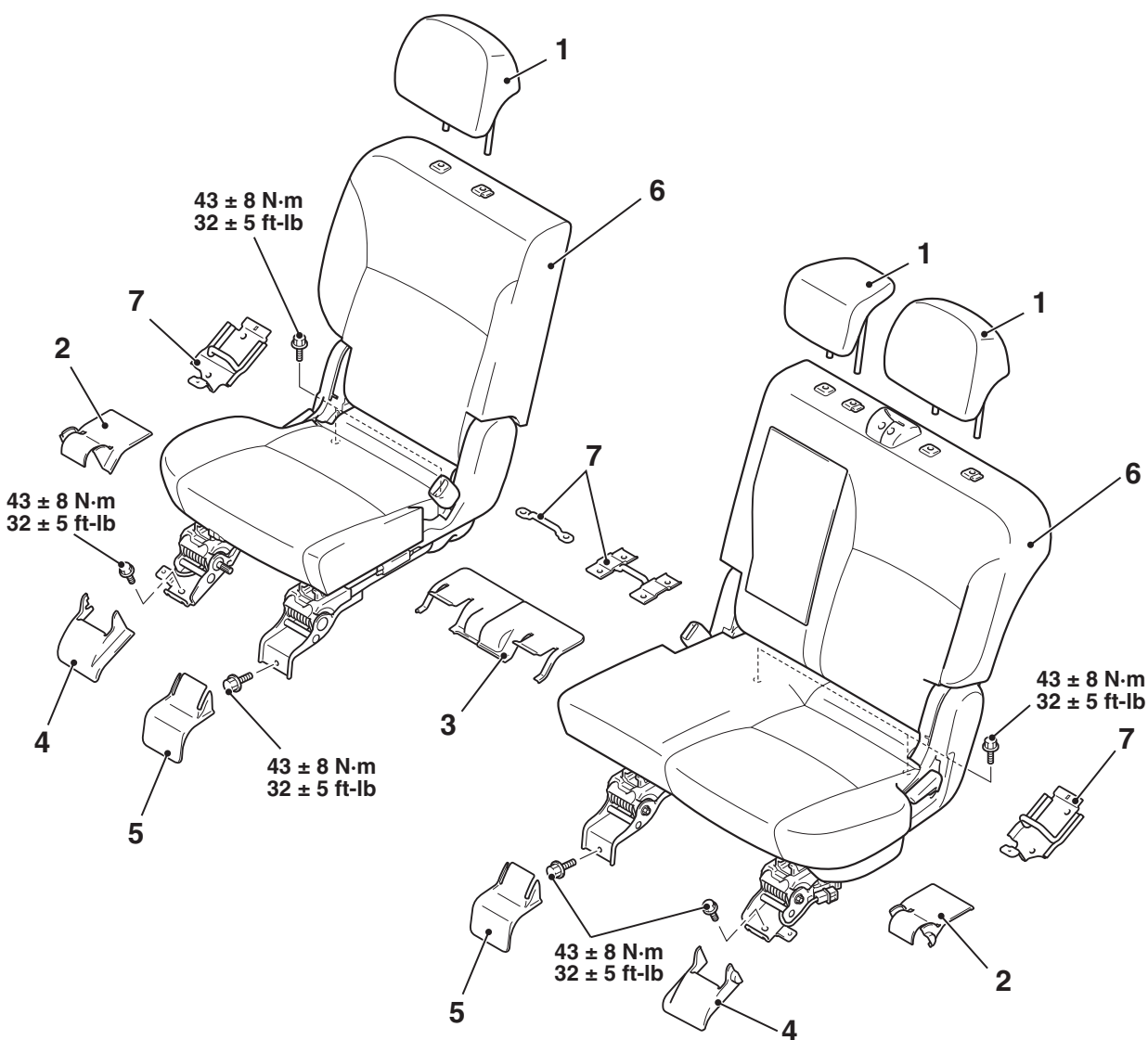
1. Check that the automatic tumble mechanism works.
2. If the slide lock release is late, remove the reclining adjuster cover, and move the clamp position of the slide lock release cable for the automatic tumble mechanism on the side of the seat from the second recess to the first recess to adjust the slide lock release timing.
3. Check again that the automatic tumble mechanism works. If the slide lock timing is still late after the adjustment, replace the slide lock release cable for the automatic tumble mechanism.
4. If the slide lock timing is still late after the slide lock release cable for the automatic tumble mechanism is replaced, replace the seat.
5. If the automatic tumble mechanism is normal, lock the sliding and turn up the seat cushion pad. Then, check that the clearance between the slide lock claw and the second seat folding adjuster is approximately 3 mm(0.1in).



6. If the clearance between the second seat folding adjuster and the slide lock claw is 5 mm(0.2in) or more, loosen the bolts shown in the figure and fix them at the position where the clearance is approximately 3 mm(0.1in).

REMOVAL AND INSTALLATION

M1522002300325



AC700160AC

Removal steps

1. Headrest
 - Scuff plate rear (Refer to [P.52A-9](#)).
2. Rear anchor cover outer
3. Rear anchor cover inner

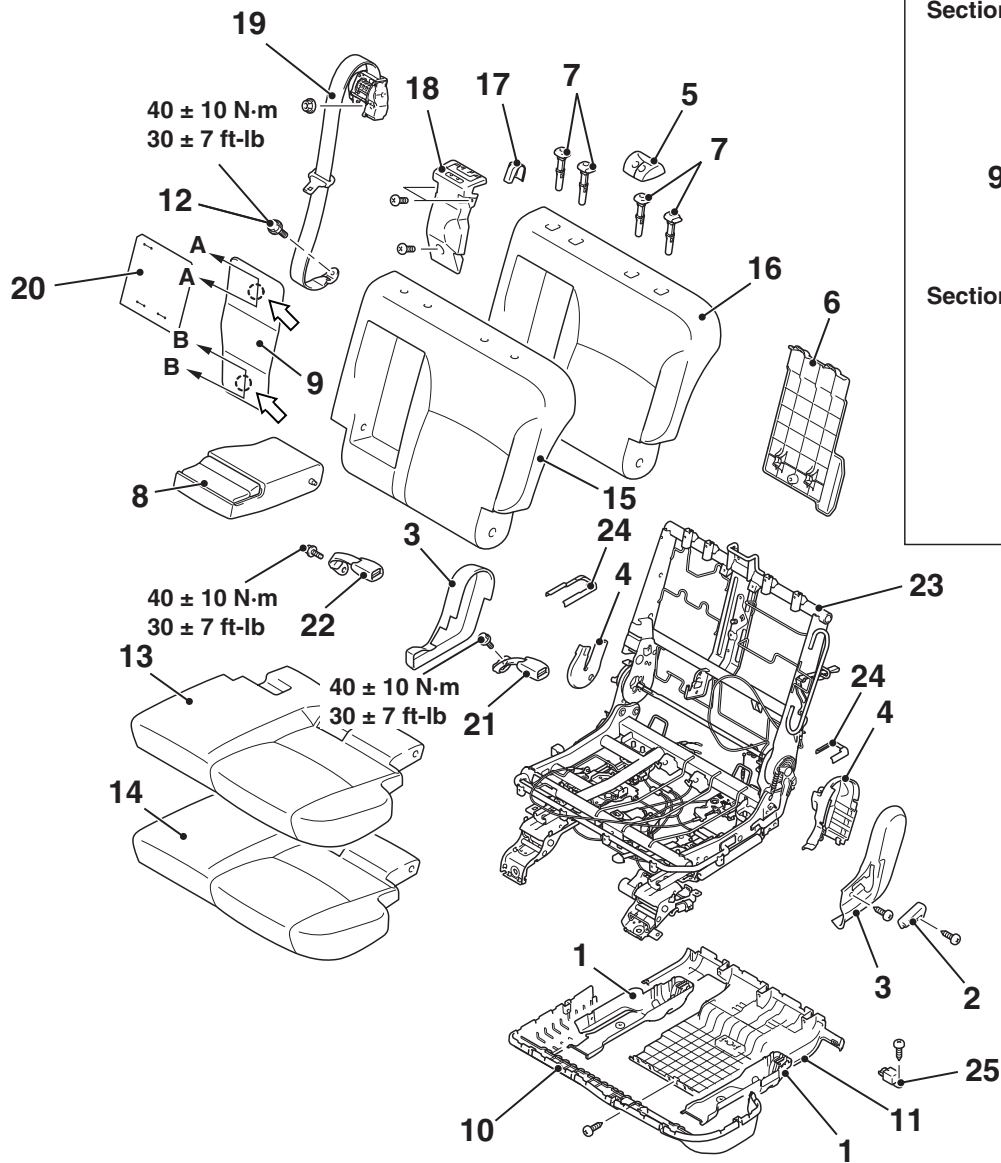
Removal steps (Continued)

4. Front anchor cover outer
5. Front anchor cover inner
6. Second seat assembly
7. Rear seat striker

DISASSEMBLY AND ASSEMBLY

M1522002500385

<SECOND SEAT (LH)>



NOTE
⇐: Claw positions

AC700161AB

Disassembly steps

1. Second seat latch cover
2. Reclining adjuster lever
3. Reclining adjuster outer cover
4. Reclining adjuster inner cover
5. Seat belt cover
6. Seatback board
7. Headrest guide
8. Armrest
9. Seatback armrest board
10. Seat cushion under cover front
11. Seat cushion under cover rear
12. Seat belt bolt
13. Seat cushion pad cover

<<A>>

<>

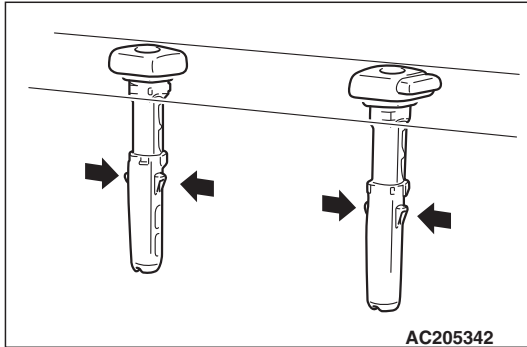
<<C>>

Disassembly steps

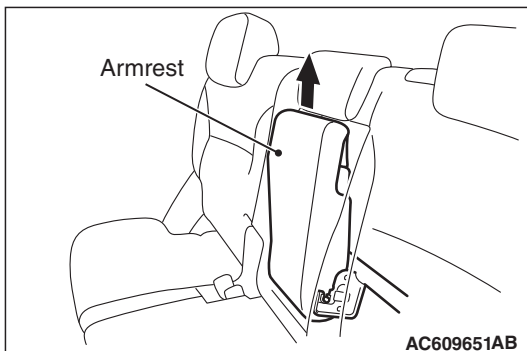
14. Seat cushion pad
15. Seatback cover
16. Seatback pad
17. Second seat back side end cap
18. Seat belt retractor cover
19. Seat belt retractor
20. Seat protector
21. Center seat belt inner
22. Side seat belt inner
23. Seat frame assembly
24. Second seat slide rail cover
25. Relay

DISASSEMBLY SERVICE POINTS**<<A>> HEADRESTRAINT GUIDE REMOVAL**

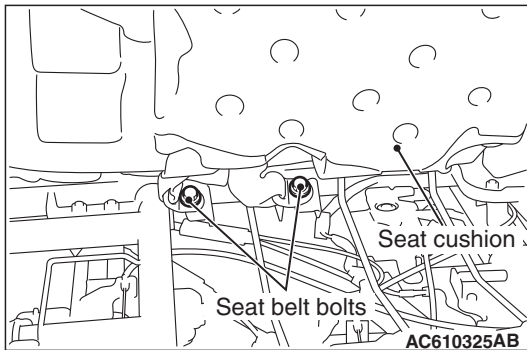
Remove while pressing the claws on the both sides.

**<> ARMREST REMOVAL**

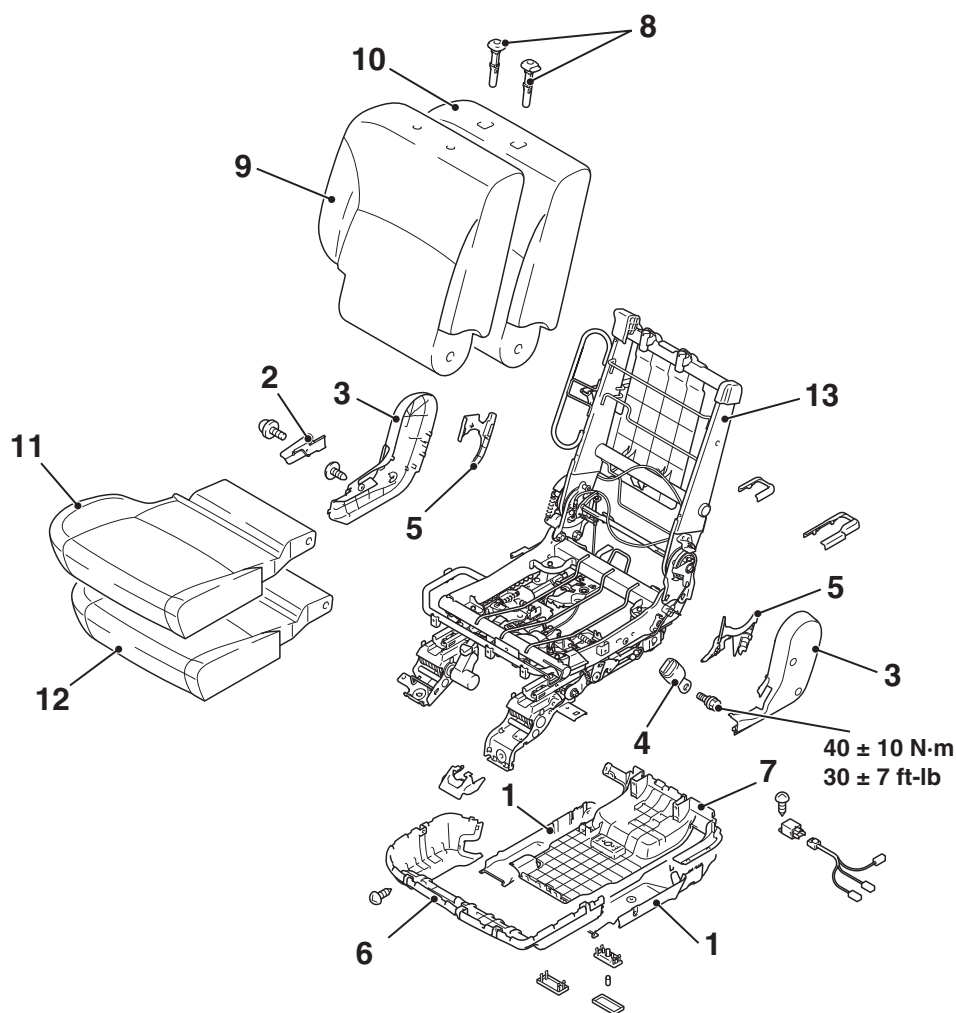
Tilt the armrest slightly, and remove it by lifting the left side.

**<<C>> SEAT BELT BOLT REMOVAL**

Turn up the cushion pad and remove the seat belt bolts.



<SECOND SEAT (RH)>



AC612967AB

Disassembly steps

1. Second seat latch cover
2. Reclining adjuster lever
3. Reclining adjuster cover
4. Seat belt inner
5. Reclining adjuster inner cover
6. Seat cushion under cover front
7. Seat cushion under cover rear

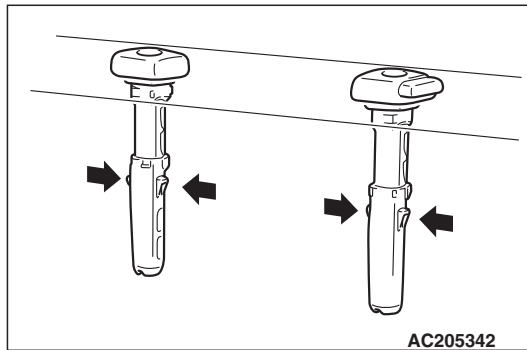
<<A>>

Disassembly steps (Continued)

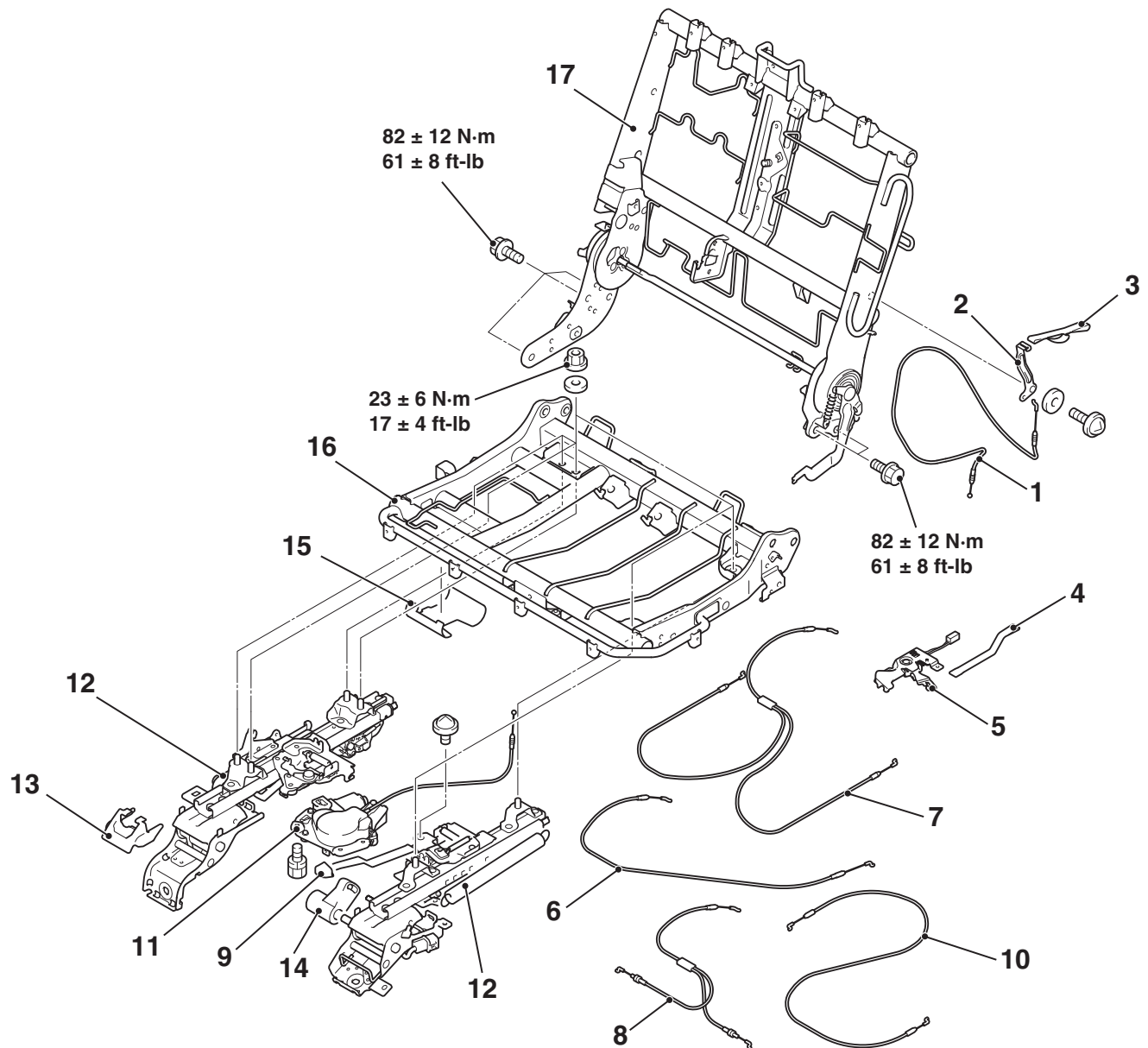
8. Headrest guide
9. Seatback cover
10. Seatback pad
11. Cushion pad cover
12. Cushion pad
13. Seat frame assembly

DISASSEMBLY SERVICE POINT**<<A>> HEADRESTRAINT GUIDE REMOVAL**

Remove while pressing the claws on the both sides.



<SEAT FRAME ASSEMBLY>



AC700041AB

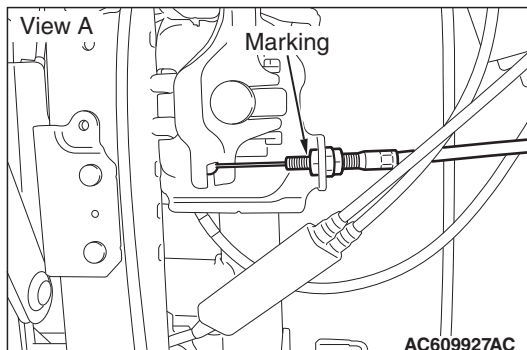
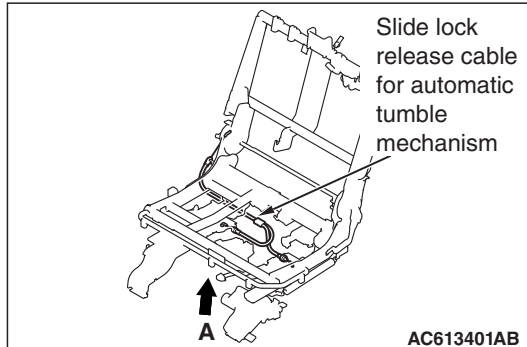
- | | | | |
|-------|---|-------|--|
| >>F<< | Disassembly | >>D<< | Disassembly |
| | 1. Seatback lock release cable | | 7. Seat rail rear end latch release cable |
| | 2. Second seat folding lever | <<A>> | >>C<< 8. Slide lock release cable for automatic tumble mechanism |
| | 3. Second seat back strap | | 9. Second seat slide adjuster lever |
| | 4. Second seat cushion strap | | 10. Seat slide cable |
| | 5. Second seat tumble lever<Vehicles with second seat tumble lever> | >>B<< | 11. Rear power seat motor |
| | | >>A<< | 12. Second seat folding adjuster |
| >>E<< | 6. Tumble lock release cable | | 13. Second seat slide rail cover |

Disassembly

14. Second seat stay damper
15. Second seat rink cover
16. Second seat cushion frame
17. Second seat back frame

DISASSEMBLY SERVICE POINT**<<A>> REMOVAL OF SLIDE LOCK RELEASE CABLE FOR AUTOMATIC TUMBLE MECHANISM**

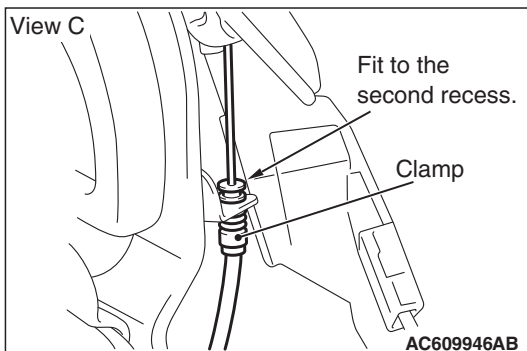
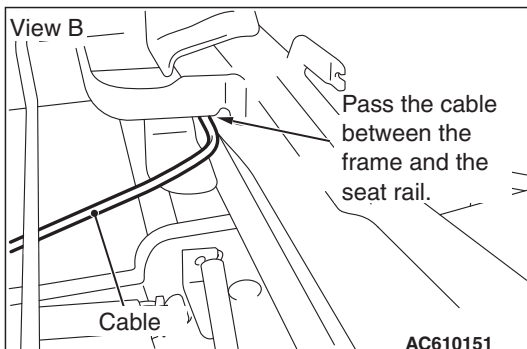
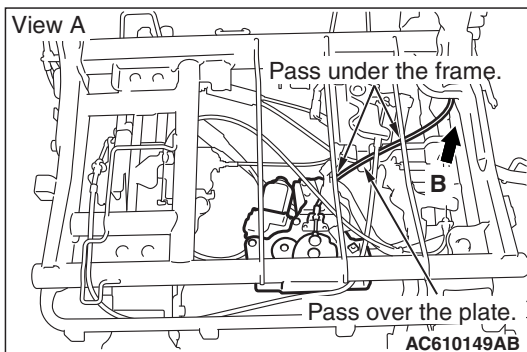
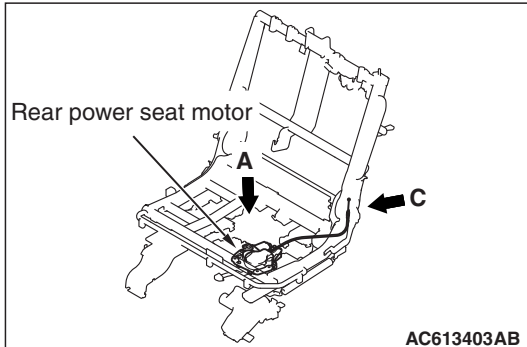
Put a mark in the position shown in view A to record the protrusion of the screw.



REASSEMBLY SERVICE POINTS

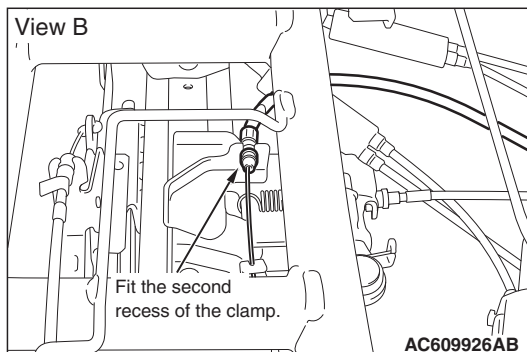
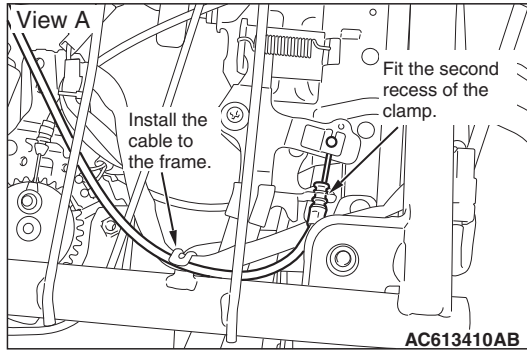
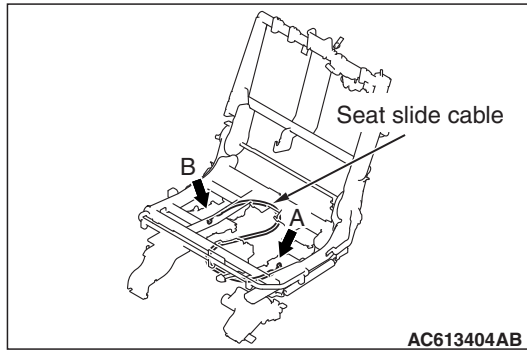
>>A<< REAR POWER SEAT MOTOR INSTALLATION

1. When installing the rear power seat motor, install the cable as shown in view A.
2. Pass the cable between the frame and the seat rail as shown in view B.
3. Fit the tip of the cable to the second recess of the clamp as shown in view C.



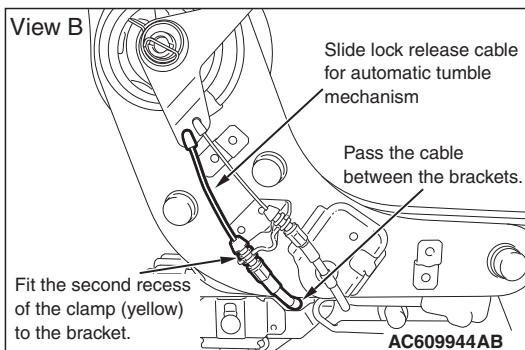
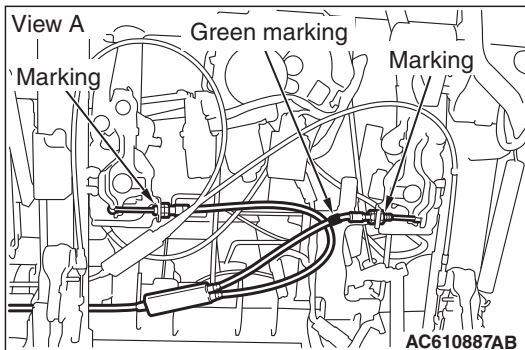
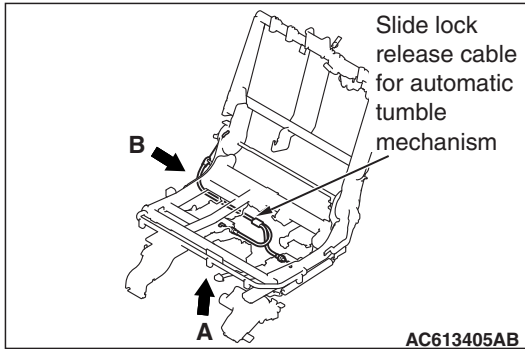
>>B<< SEAT SLIDE CABLE INSTALLATION

Fit the second recess of the clamp in view A and view B to the bracket. When installing the cable, make sure that the cable is not bitten by the moving area.



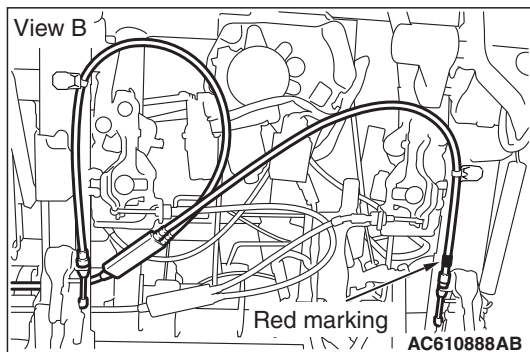
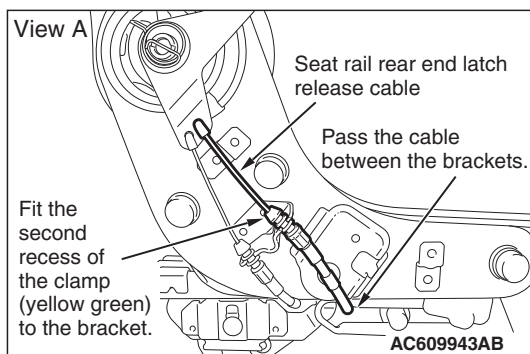
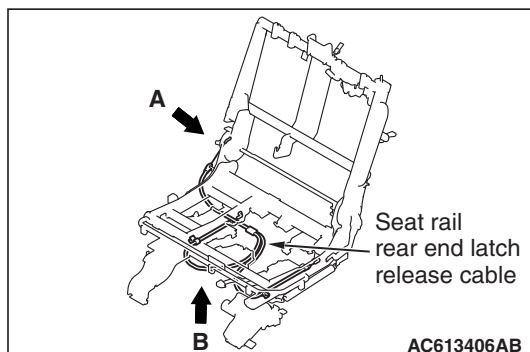
>>C<< SLIDE LOCK RELEASE CABLE FOR AUTOMATIC TUMBLE MECHANISM INSTALLATION

1. When installing the cable in view A, protrude the screws to the position marked during the removal. Then, tumble the seatback and check that the slide locks on the right and left side are fully released. When installing the cable, install the cable with the green marking to the left rail.
2. Fit the second recess of the clamp (yellow) shown in view B to the bracket. Pass the cable between the brackets when installing it. Make sure that the cable is not bitten by the moving area.



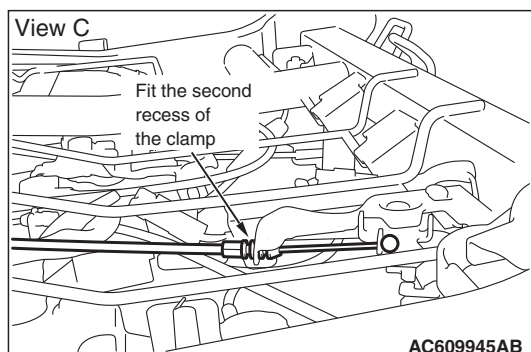
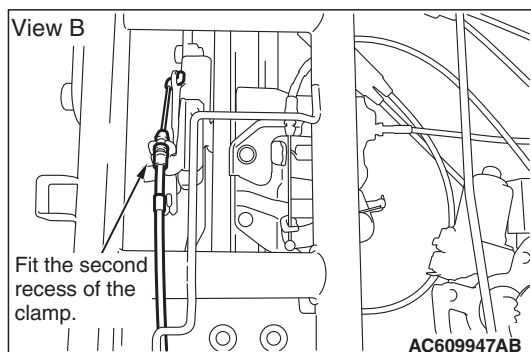
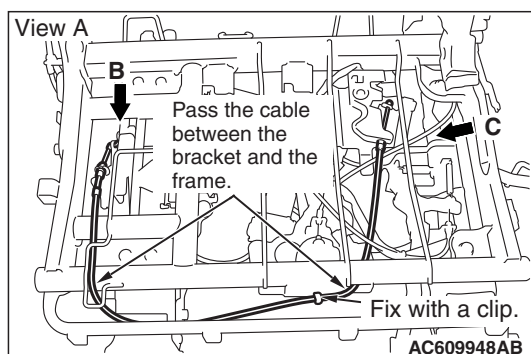
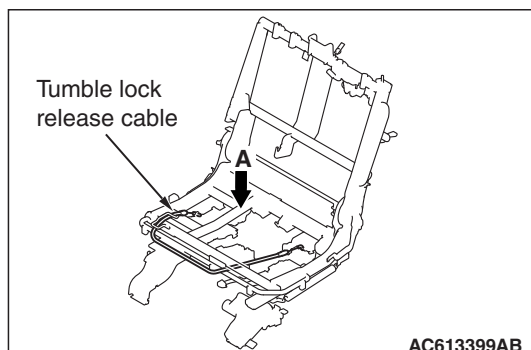
**>>D<< SEAT RAIL REAR END LATCH RELEASE
CABLE INSTALLATION**

Fit the second recess of the clamp in view A to the bracket. When installing the cable, make sure that the cable is not bitten by the moving area. When installing the cable in view B, install the cable with the red marking to the left rail.



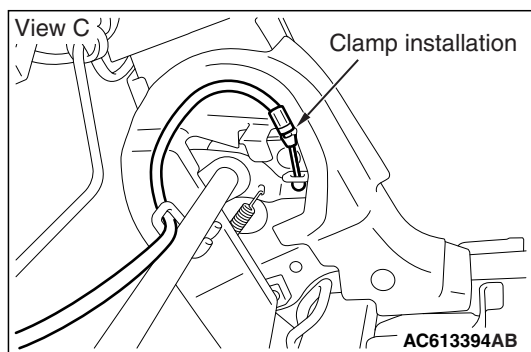
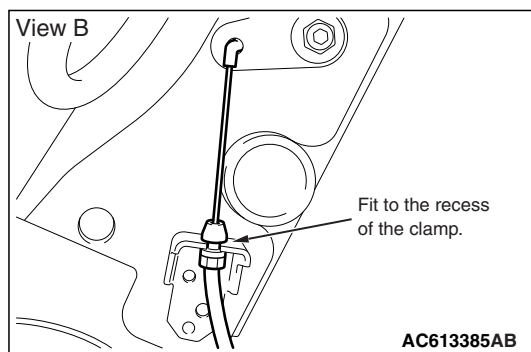
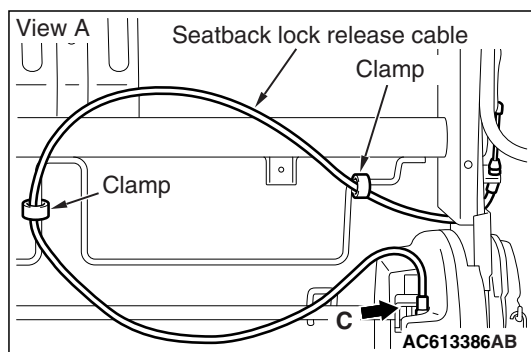
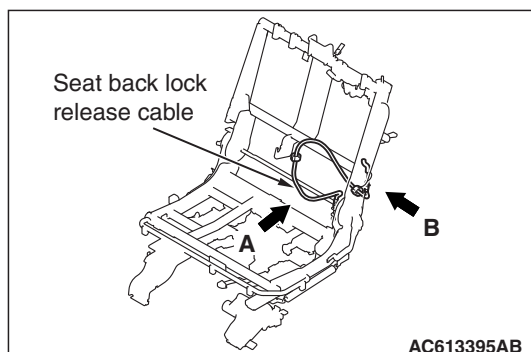
>>E<< TUMBLE LOCK RELEASE CABLE INSTALLATION

Install the cable as shown in view A. Fit the second recess of the clamp in view A and view B to the bracket. When installing the cable, make sure that the cable is not bitten by the moving area.



**>>F<< SEATBACK LOCK RELEASE CABLE
INSTALLATION**

Install the cable as shown in view A. Fit the second recess of the clamp in view B to the bracket. When installing the cable, make sure that the cable is not bitten by the moving area.

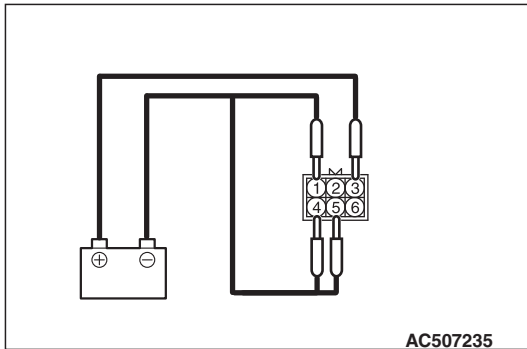


INSPECTION

M1522002400054

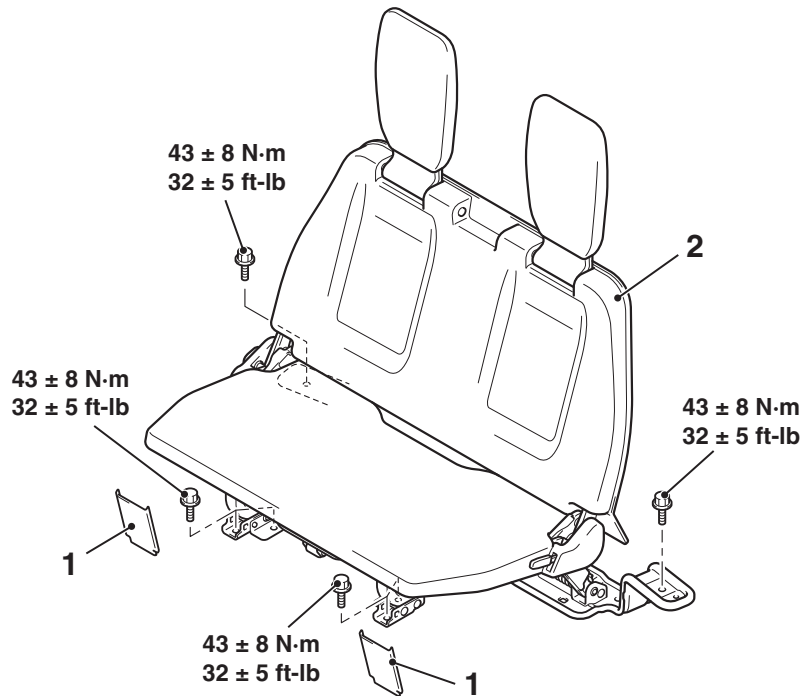
AUTO-FOLDING SEAT INSPECTION

Connect the + terminal of the battery to the auto-folding seat connector terminal No.3 and the -terminal to terminals Nos. 1, 4, and 5 and check that the motor works.



THIRD SEAT ASSEMBLY REMOVAL AND INSTALLATION

M1522002800267



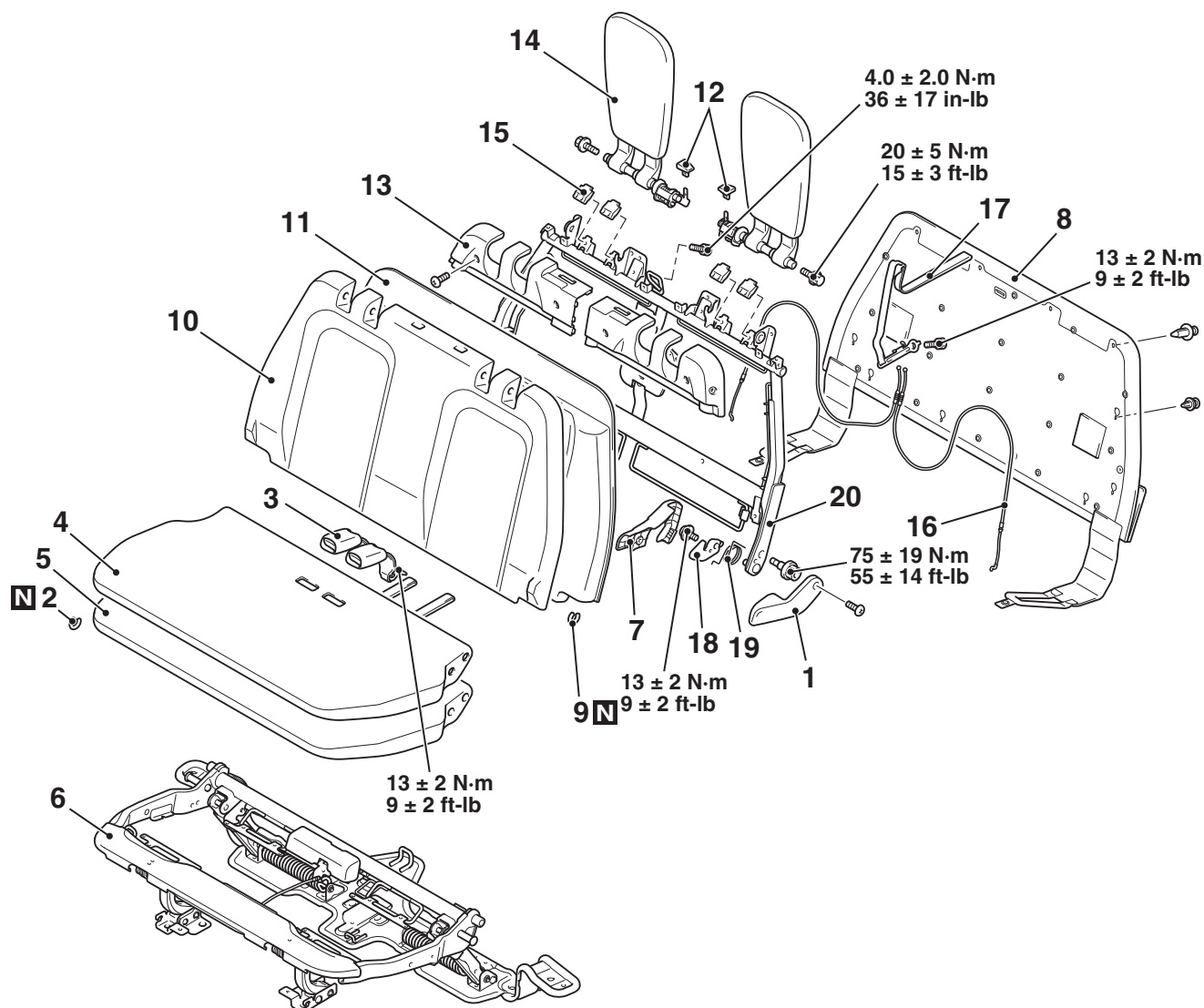
AC709362AD

Removal steps

1. Anchor cover
2. Third seat assembly

DISASSEMBLY AND ASSEMBLY

M1522003000327



AC709363AC

Disassembly steps

1. Third seat hinge cover outer
2. Hog ring
3. Third seat belt inner
4. Third seat cushion cover
5. Third seat cushion pad
6. Seat cushion frame assembly
7. Third seat hinge cover inner
8. Third seatback board
9. Hog ring
10. Third seatback cover
11. Third seatback pad

Disassembly steps (Continued)

12. Third seat folding knob
13. Third seat headrest hinge cover
14. Headrest assembly
15. Third seat stopper
16. Third seat wire
17. Third seat band
18. Third seat folding lever
19. Third seat spring
20. Seatback frame assembly

SEAT BELT

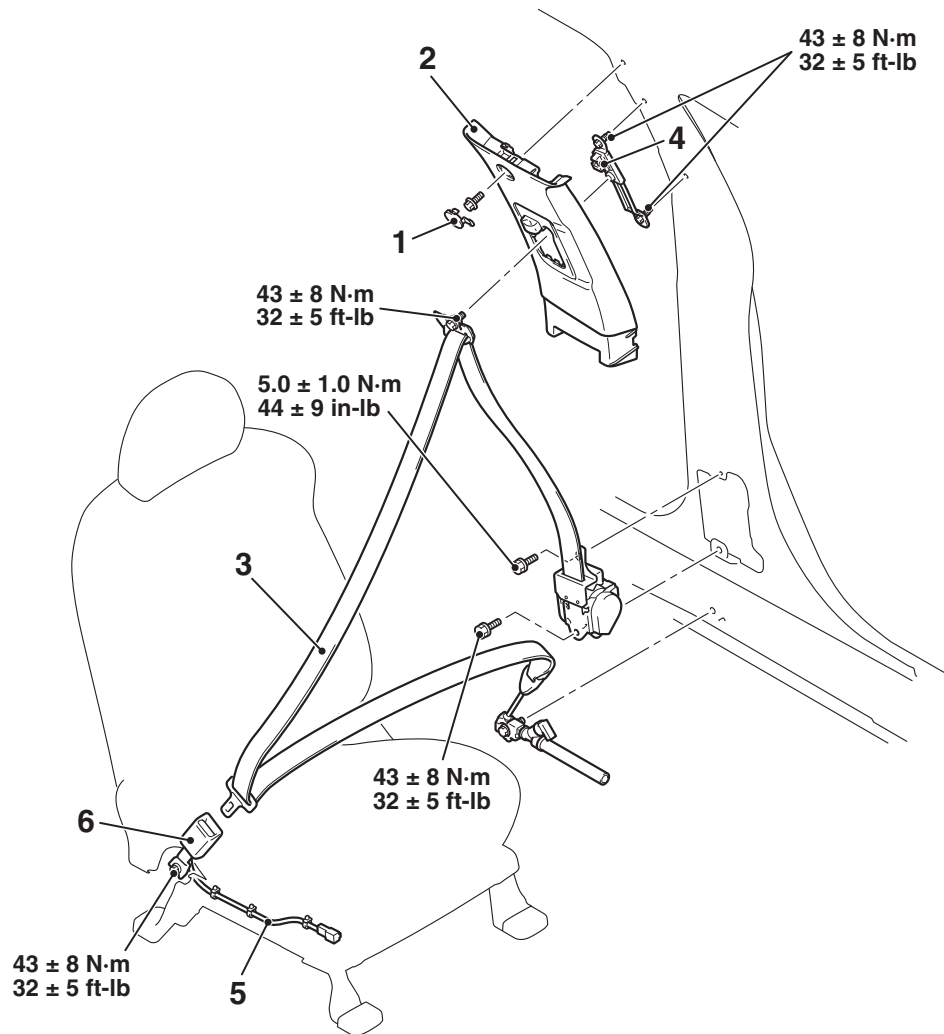
FRONT SEAT BELT

REMOVAL AND INSTALLATION

M1523001301306

CAUTION

For the removal of the seat belt with pre-tensioner, refer to **GROUP 52B –Service Precautions** (refer to [P.52B-24](#)) and **Seat Belt with Pre-tensioner** (refer to [P.52B-461](#)).



AC701334AD

Outer seat belt removal steps

- Front scuff plate, scuff plate rear, center pillar trim lower (Refer to [P.52A-9.](#))
- 1. Center pillar trim upper cap
- 2. Center pillar trim upper (Refer to [P.52A-9.](#))

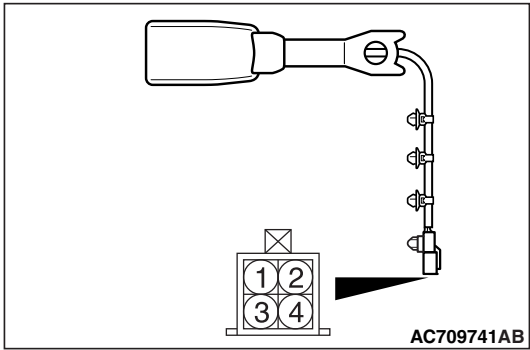
Outer seat belt removal steps

3. Outer seat belt
 4. Adjuster seat belt anchor
- #### **Inner seat belt removal steps**
5. Seat belt switch connector
 6. Inner seat belt

INSPECTION

M1523004400655

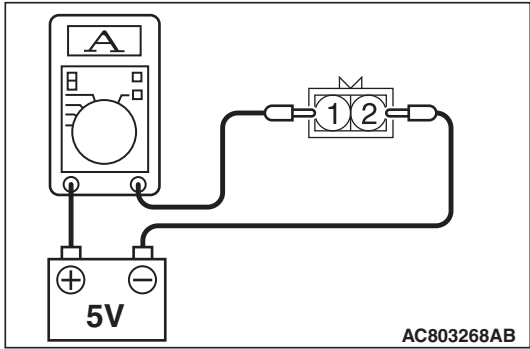
SEAT BELT BUCKLE SWITCH CONTINUITY
CHECK (DRIVER'S SIDE)



Item	Tester connection	Specified condition
Fastened seat belt	1 -2	Open circuit
Unfastened seat belt	1 -2	Continuity exists (2Ω or less)

SEAT BELT BUCKLE SWITCH CHECK
(PASSENGER'S SIDE)

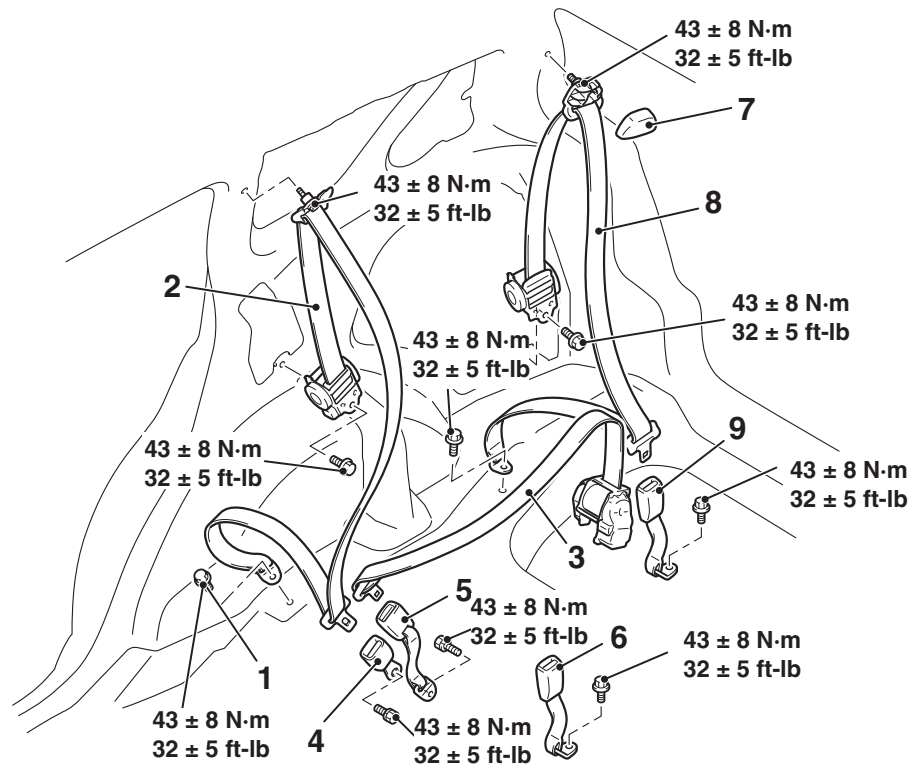
Power supply voltage: 5V



Power supply connection	Check condition	Normal condition
<ul style="list-style-type: none">Connect terminal No.1 to the negative power supply (5V) terminal.Connect terminal No.2 to the positive power supply (5V) terminal.	When the seatbelt is connected	12 - 17 mA
	When the seatbelt is disconnected	4 - 7 mA

REAR SEAT BELT REMOVAL AND INSTALLATION

M1523001601114



AC505517AC

Second seat belt (outer) removal steps

1. Seat belt side lower anchor bolt
 - Scuff plate rear, quarter trim lower, quarter trim upper (Refer to [P.52A-9](#)).
 - Lower liftgate trim (Refer to [P.52A-14](#)).
2. Seat belt side
 - Seat cushion assembly (LH)
3. Seat belt center

Second seat belt RH and center (inner) removal steps

4. Inner seat belt side (RH)
5. Inner seat belt center

Second seat belt LH (inner) removal steps

- Seat cushion assembly (LH)
- 6. Inner seat belt

Third seat belt removal steps <7 persons seat>

7. Third seat belt sash guide cover
 - Quarter trim lower, quarter trim upper (Refer to [P.52A-9](#)).
8. Outer seat belt
9. Inner seat belt

NOTES