

Map update manual



■ Purpose of contents

The MAP SD card Update is for updating the map data of the **MMES (Mitsubishi Multi Entertainment System)** using naviextras. Please read the precautions carefully and follow the procedures to perform the version update.

■ Subject model

MMES (Mitsubishi Multi Entertainment System) for Mirage
ID-No: **U-11** (The number is shown on lower left on face plate).

■ Caution



- The map update will be downloaded on to the SD card using A PC system. Note: This PC TOOL does not support Mac PC.
 - The required time to complete the version update will vary approximately 2 to 3.5hrs. However, the time required for completion may vary depending on the conditions of use.
 - The version update does require some time, please do not remove SD card or shutdown your PC while the map update is being performed.
 - This update is only applicable to model #: 8750A303.
 - In the event that a problem occurs during installation of this version update, for whatever reason, such as data you have entered is modified or deleted (locations, tracks, etc.), no compensation will be given for this loss.
- *If updating cannot be completed or any problem/further inquiries with map update, please send a e-mail from the website (clarion.naviextras.com) support to support@ticket.naviextras.com.

■ Procedure of the file update

1. Preparation

1-1. Tool Installation

NOTE: This PC TOOL does not support Mac PC.

Guide: How to install Naviextras Toolbox?

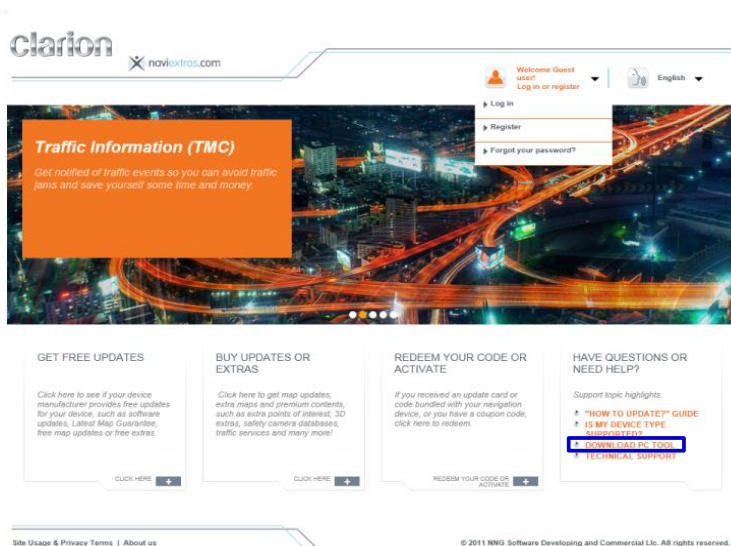
Before downloading the installer from the 'Downloads' page, please make sure that your PC meets the minimum requirements:

- USB
- Broadband internet connection is recommended
- Windows operating system installed on your PC (Windows XP or newer version)

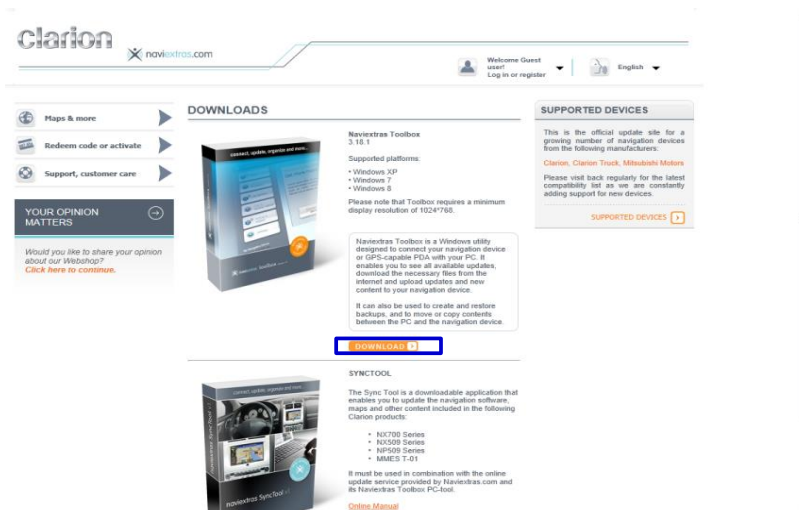
The Naviextras Toolbox is quick and easy to install. After downloading the installer file, simply double-click on the file to start the installation.

First you need to select the language of the Installation Wizard.

1-2. Please visit the website "clarion.naviextras.com" and follow these instructions. Click "DOWNLOAD PC TOOL".



1-3. Please click the DOWNLOAD link and get Naviextras Toolbox's installer and install it.

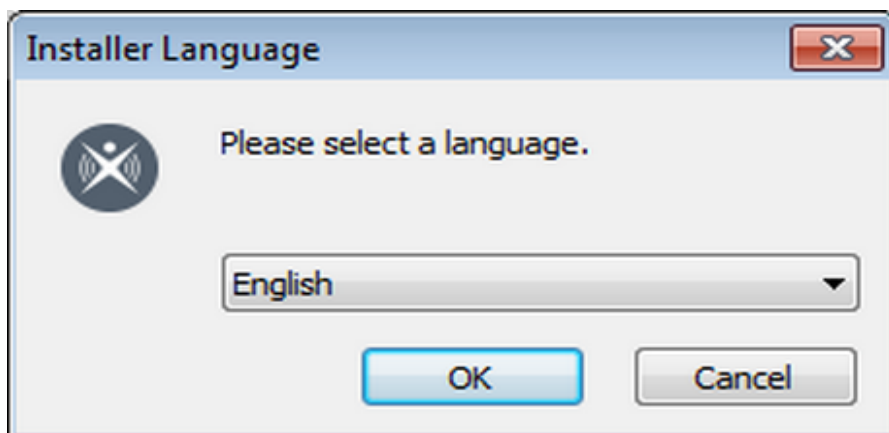


2. How to install Naviextras Toolbox?

The Naviextras Toolbox is a Windows-based program designed to install and organize content on your device. It enables you to purchase a wide variety of extra content, including newest maps, 3D content, traffic information.

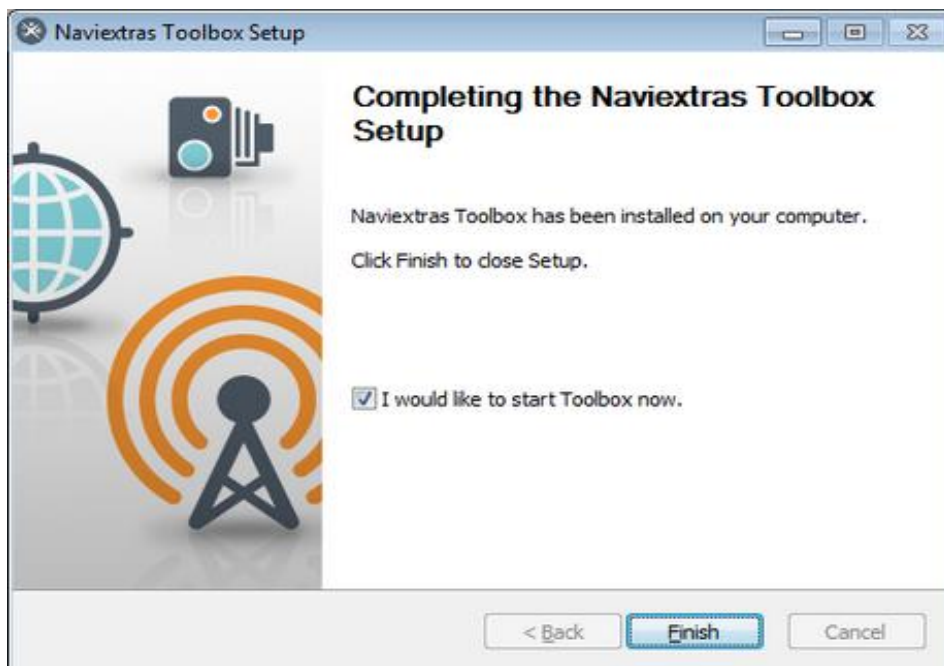
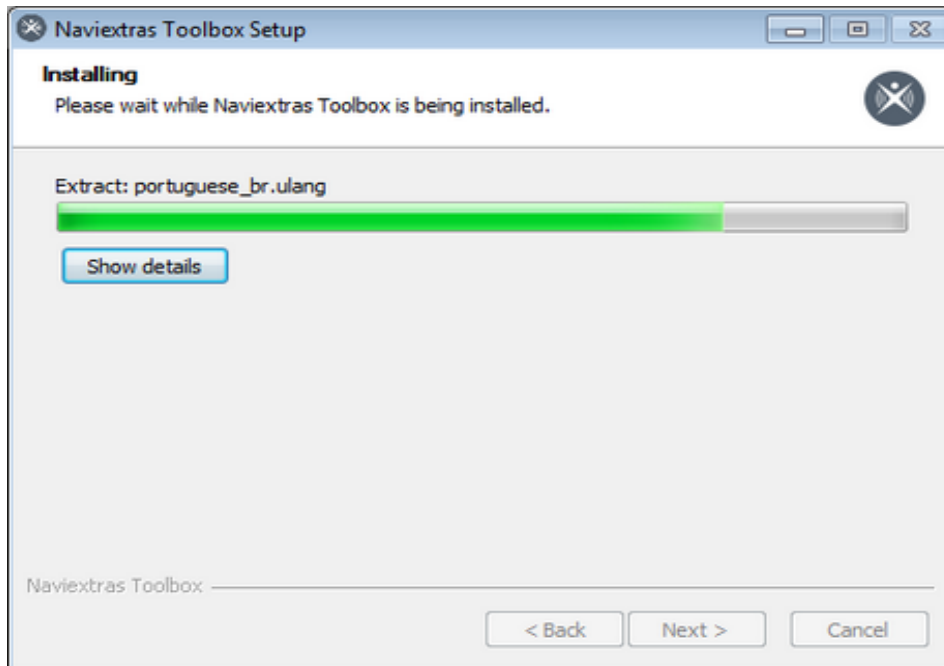
Once you can browse and purchase items that are compatible with your navigation device. In addition, the application enables you to make a backup to avoid any data loss.

2-1. To install the application, follow the instructions on the screen.



2-2. To install the application, follow the instructions on the screen.

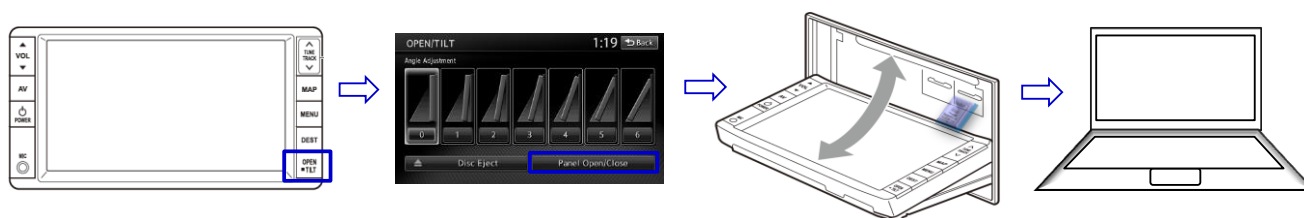




*The Naviextras Toolbox prompts you to update at startup if there is a newer version available. If you choose to update, you will go through the same installation procedure as described above. You must be logged in to be able to update the software. If you are notified about an available update but can find no way to complete it, please contact your internet service provider.

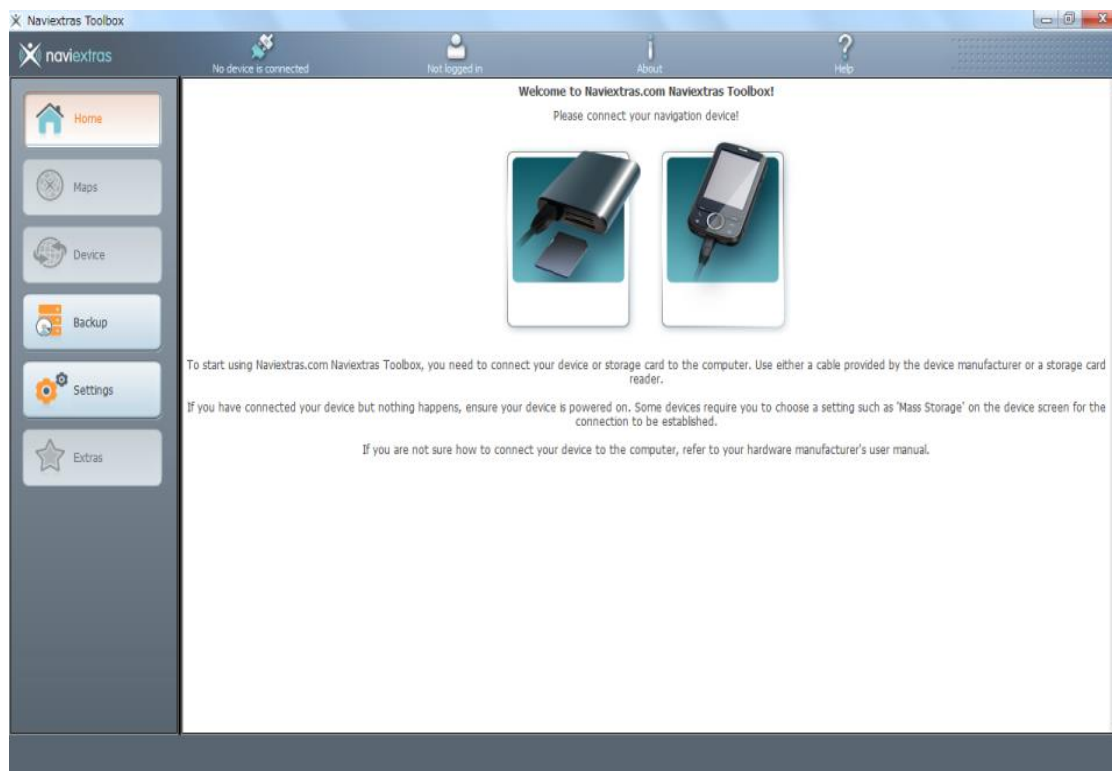
3. Get SD card Prepared

- 3-1. Press the "OPEN/TILT" hard button on the vehicle audio navi to display the "Panel Open/Close" screen button.
- 3-2. Touch the "Panel Open/Close" key. The operation panel opens.
- 3-3. Open the Map SD cover to expose the map SD card
- 3-4. Lightly press the SD memory card inward with your finger until it stops, and then pull back your finger. The SD memory card comes out.
- 3-5. Remove the SD memory card carefully and close the SD map cover.
- 3-6. Touch the "Panel Open/Close" key to close the operation panel.
- 3-7. Insert the MAP SD into PC.



4. Map Updating

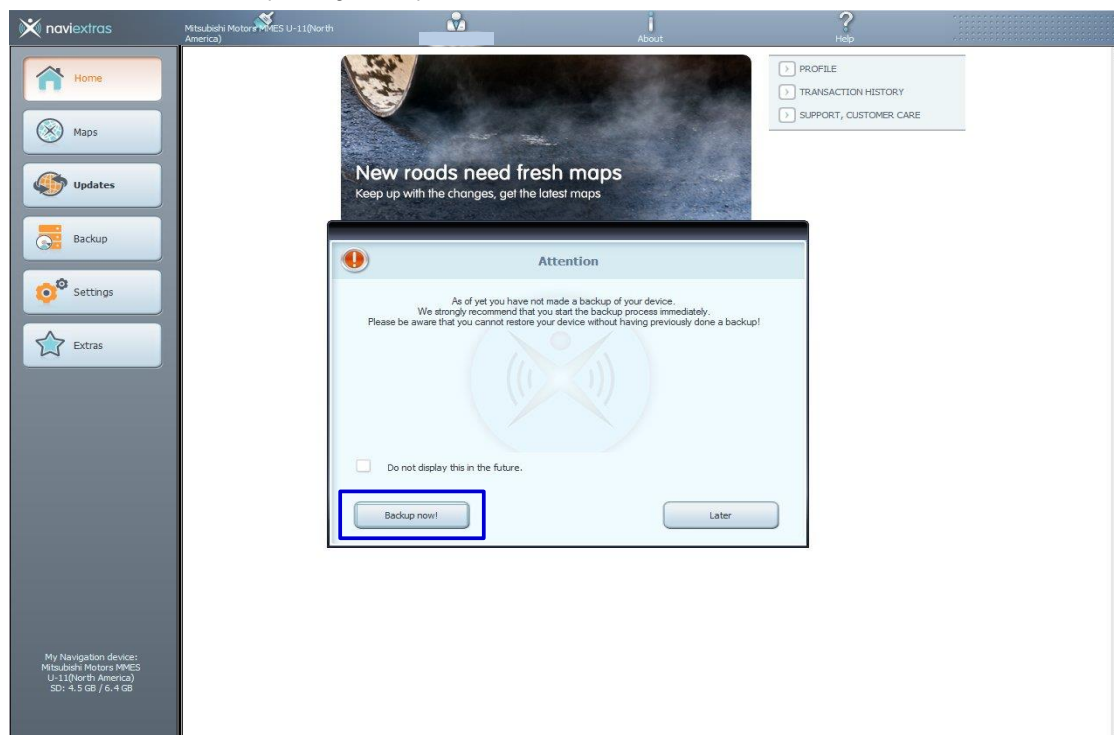
4-1. Open PC Naviextras Toolbox



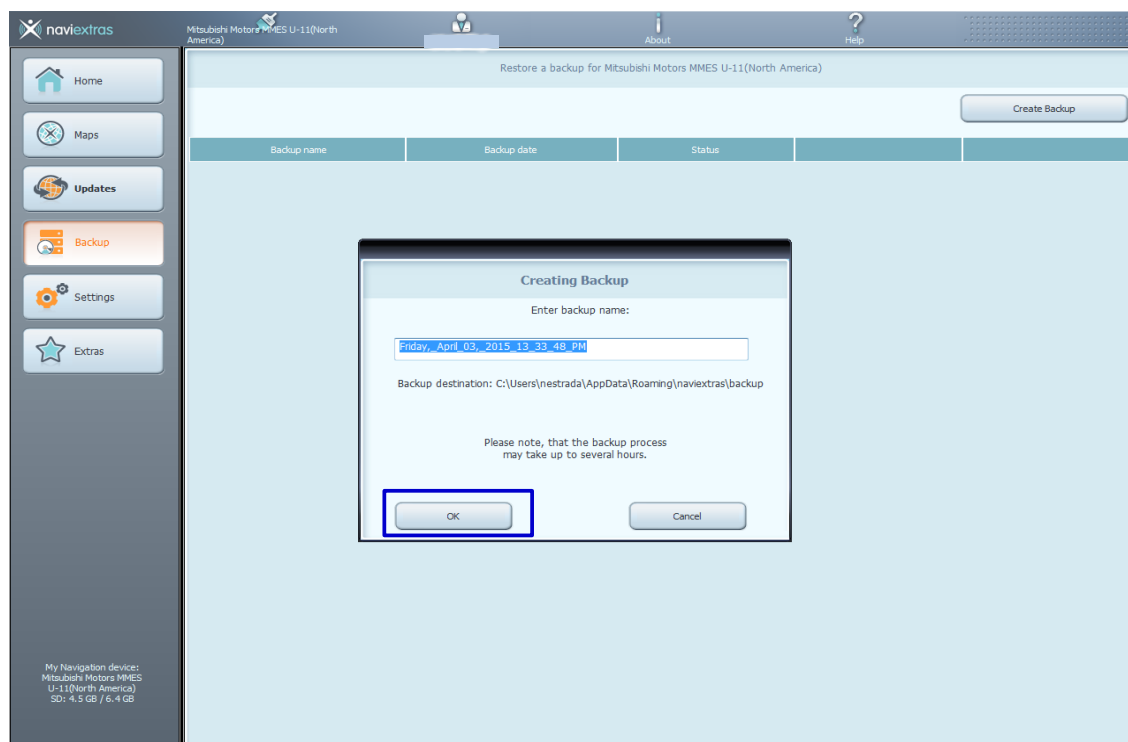
4-2. Insert your navigation map SD card to your PC

- 4-3. Make sure your PC is connected to the internet. Internet connection is required for Naviextras Toolbox to verify if any update is available for download, as well as for the download process itself.

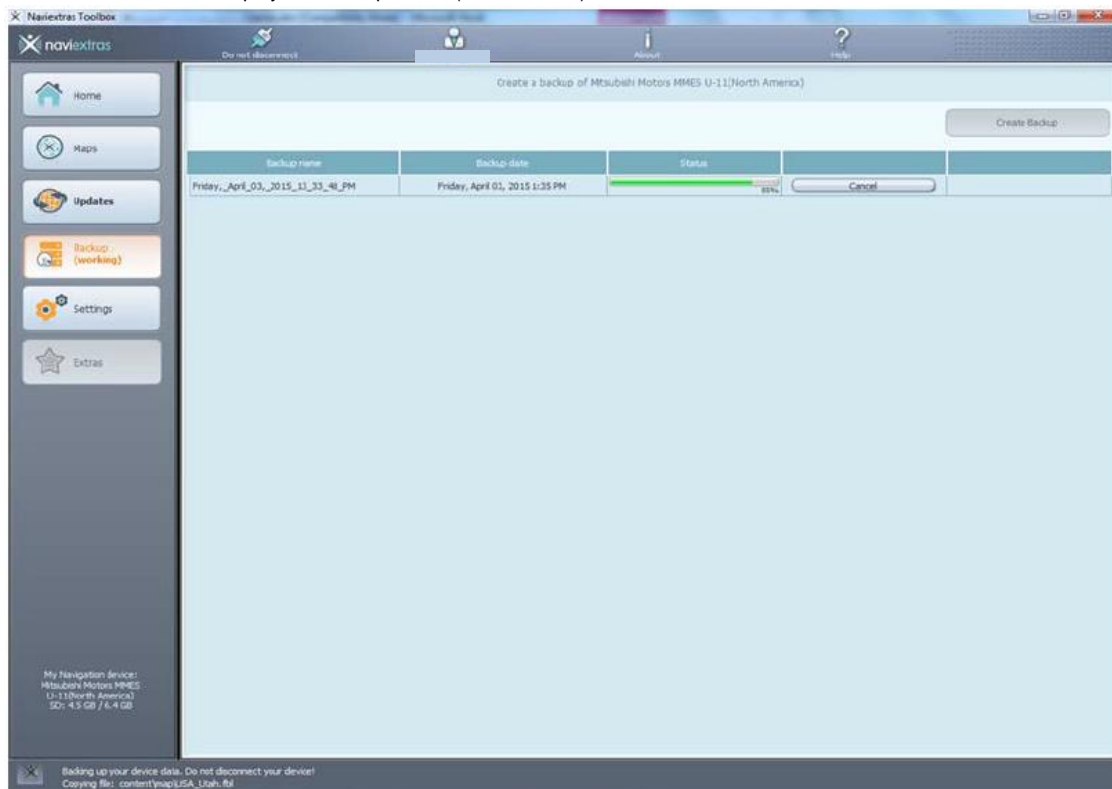
- 4-4. You will be given the opportunity to create a backup (NOTE: Creating a backup is strongly recommended before every installation)
 4-5. Installation will start after pressing "Backup Now!"



- 4-6. The PC Toolbox will display the location and file name of the backup file. You can change the backup file name or use the existing file name. Press "OK" to backup the SD MAP card or "Cancel" if you do not wish to create a backup.

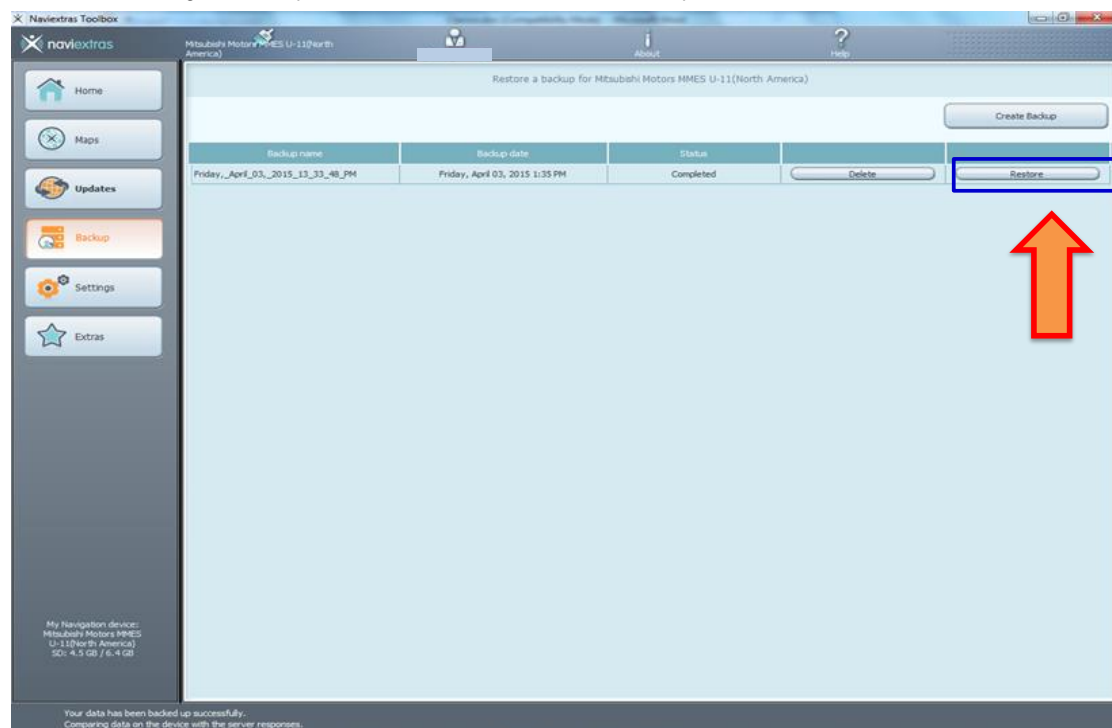


4-7. The PC Toolbox will display the backup status (shown below).



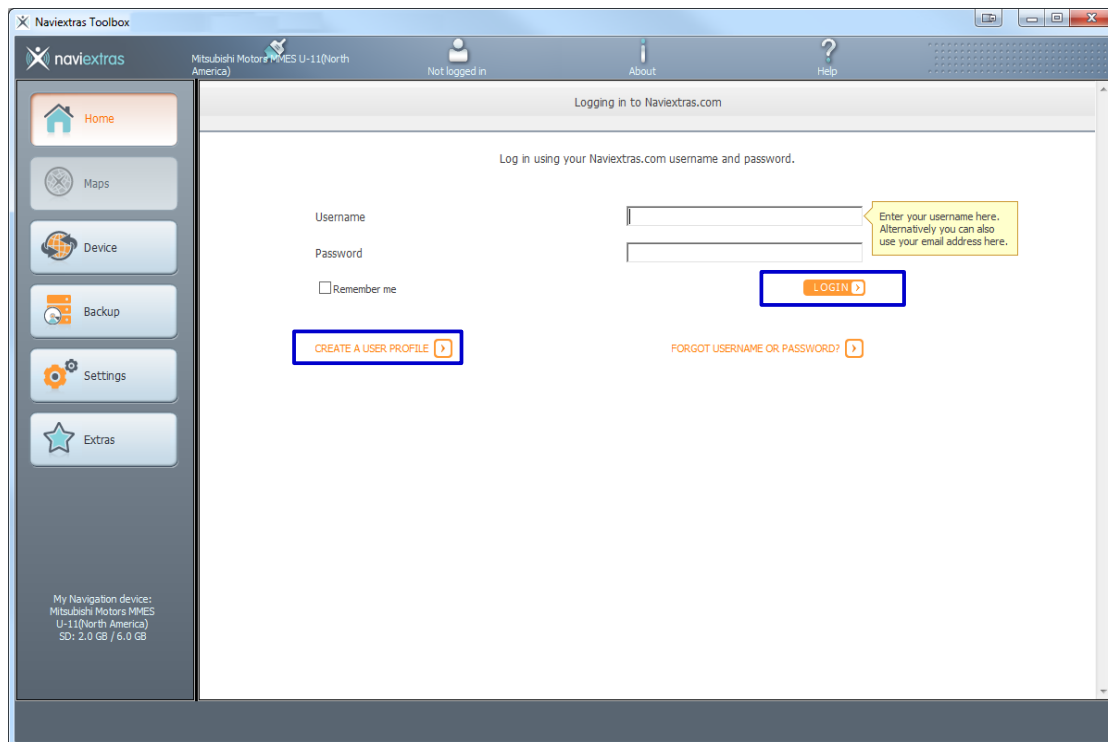
4-8. After the back is completed, please continue with Registration.

NOTE: A new option will appear "Restore". This option is to be used to recover the last Map data backup onto the original SD Map card in the event that the data was corrupted.

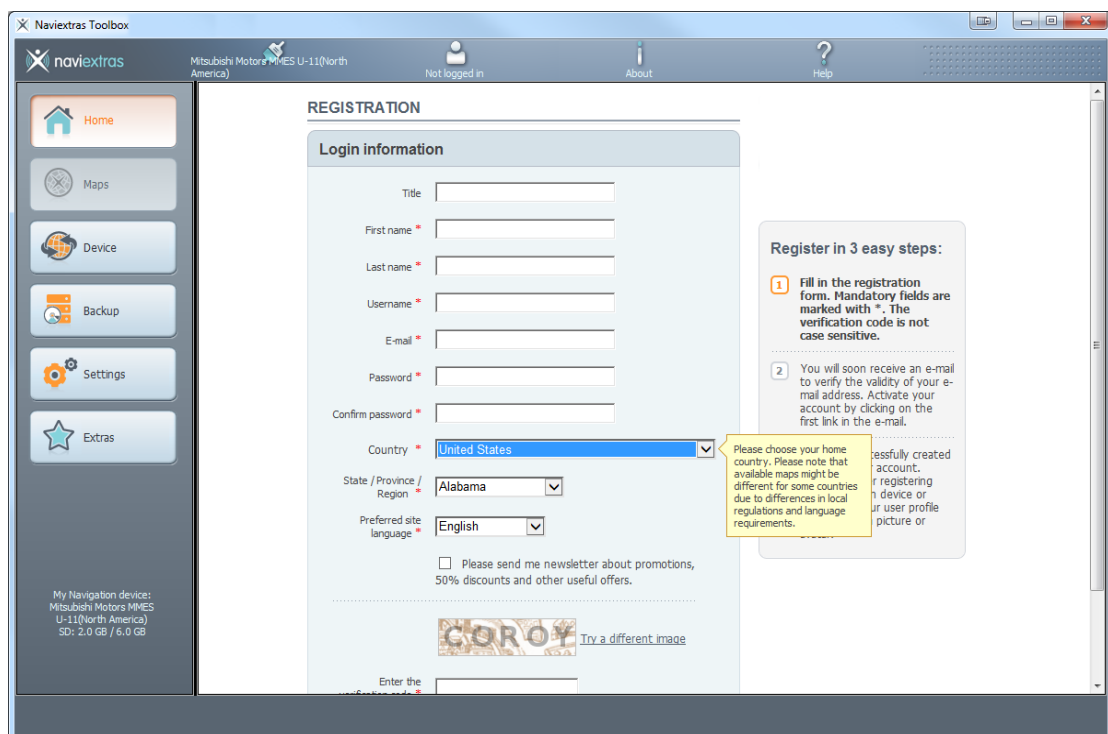


5. Log into the naviextras

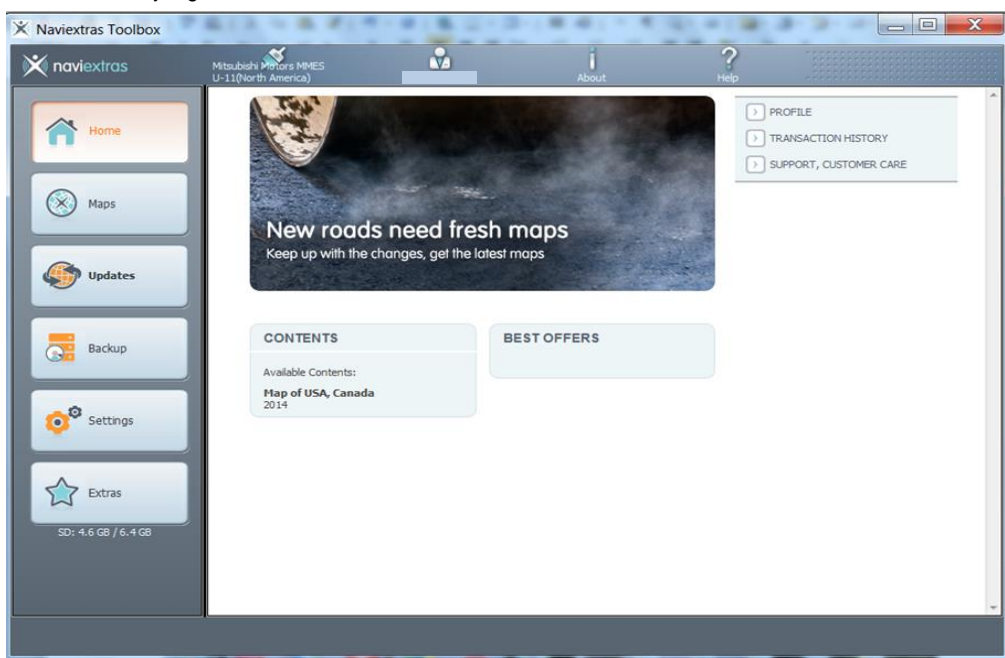
- 5-1. Select "Home" and after the Naviextras Toolbox redirects you to the login page where you can Register/log in.
- Click on LOGIN or CREATE A USER PROFILE



- 5-2. If you don't have an account, you can click "CREATE A USER PROFILE" to create new account.

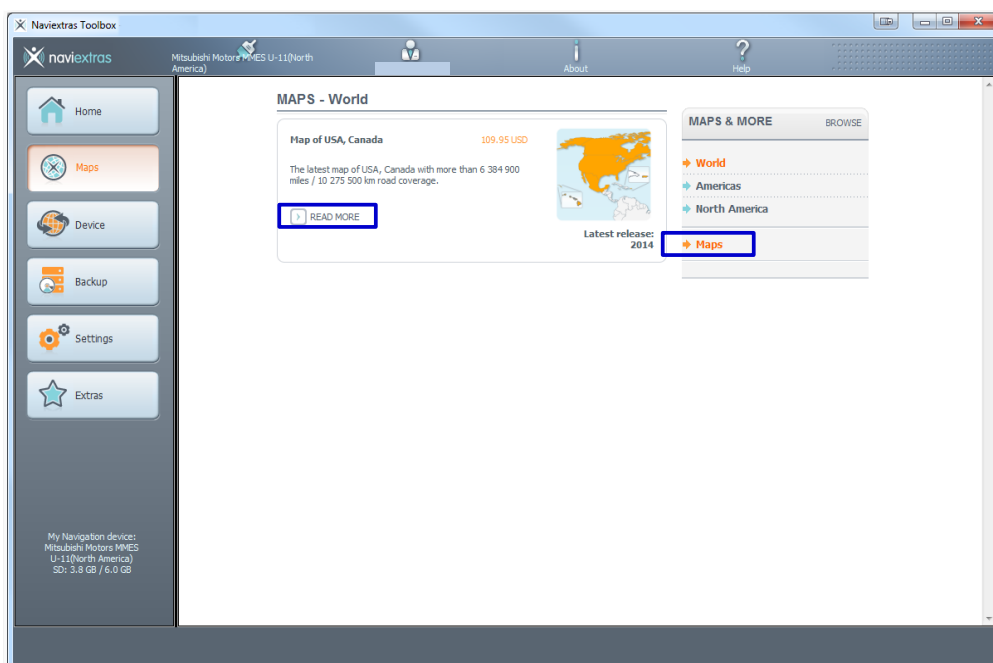


- After creating the account, log into the website by inputting the Username and Password.
- If click "YES", your GPS logs will be collected. And if you click "NO", it will proceed to the next step.
- Once you are successfully logged in, your name will be shown on the top of all Naviextras Toolbox screens.
- When your SD card is successfully connected and Naviextras Toolbox finds it in the list of supported devices, the SD card name will appear at the top of the Naviextras Toolbox window.
(Please note that Naviextras Toolbox might give a slightly different device name than the one you may find on the packaging or in the product information. This does not affect the device functions or the installations of updates in any way.)
- If Naviextras Toolbox recognizes the SD card and you are logged in, your SD card is automatically registered on Naviextras.com.

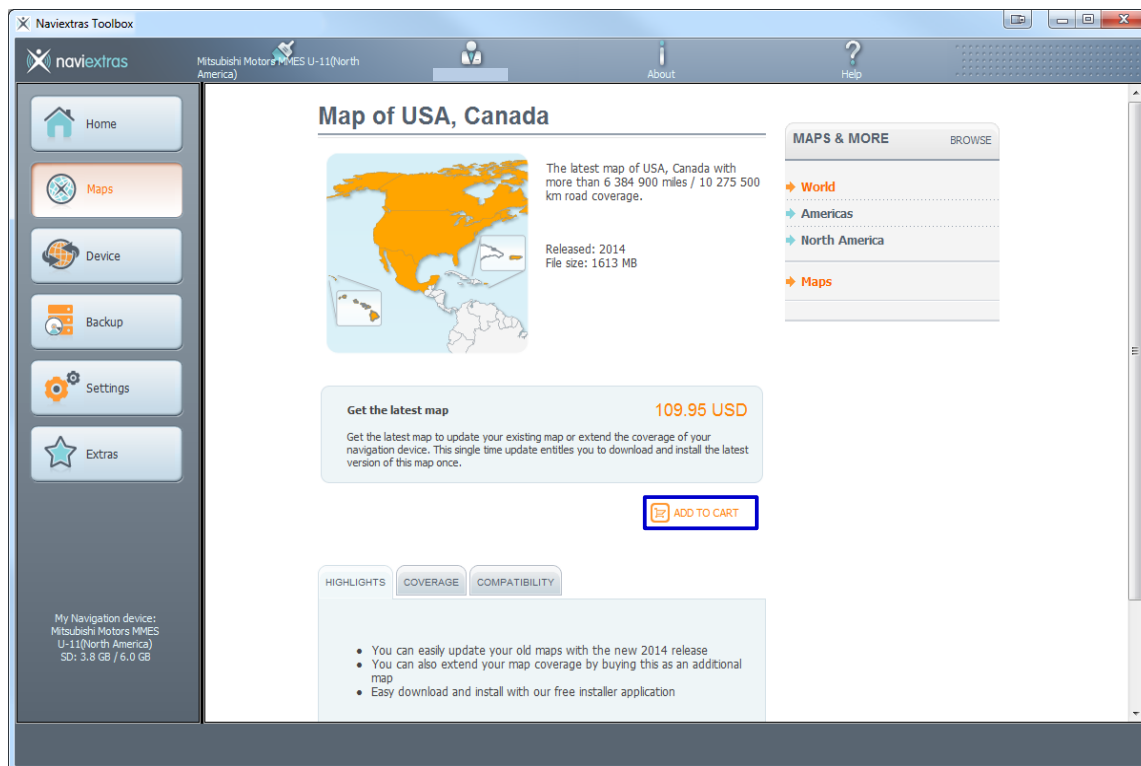


6. Purchasing & Updating Map Data

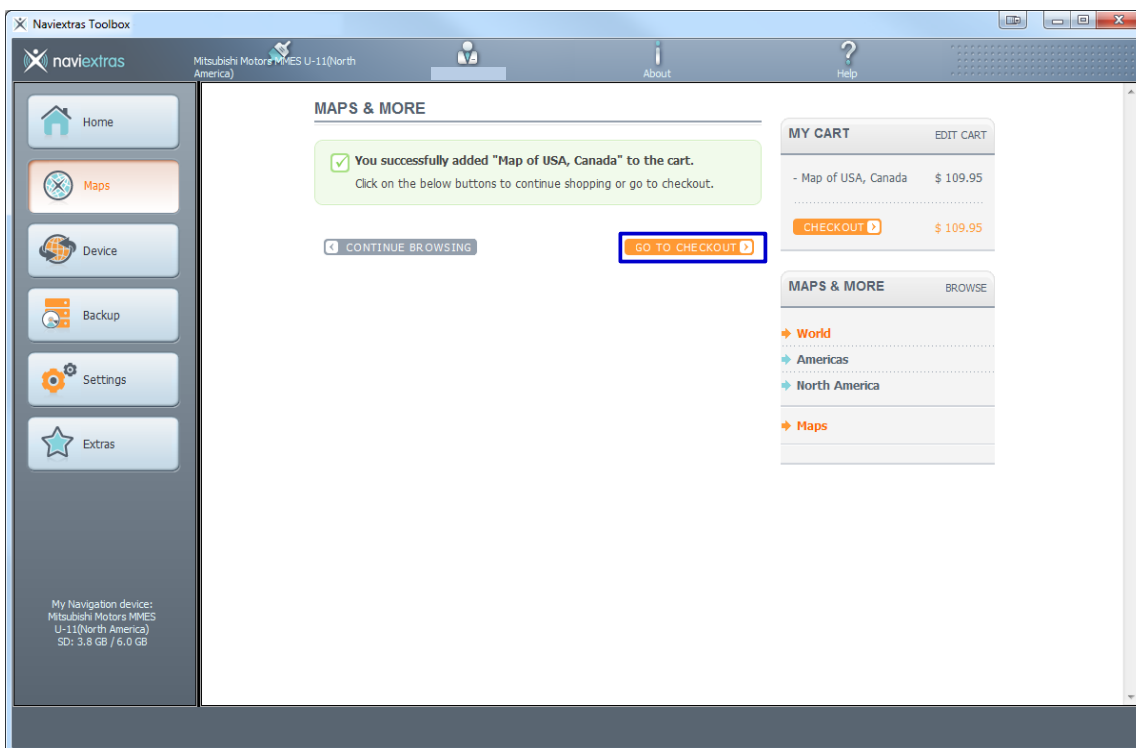
6-1. Press "MAPS", then press "READ MORE".



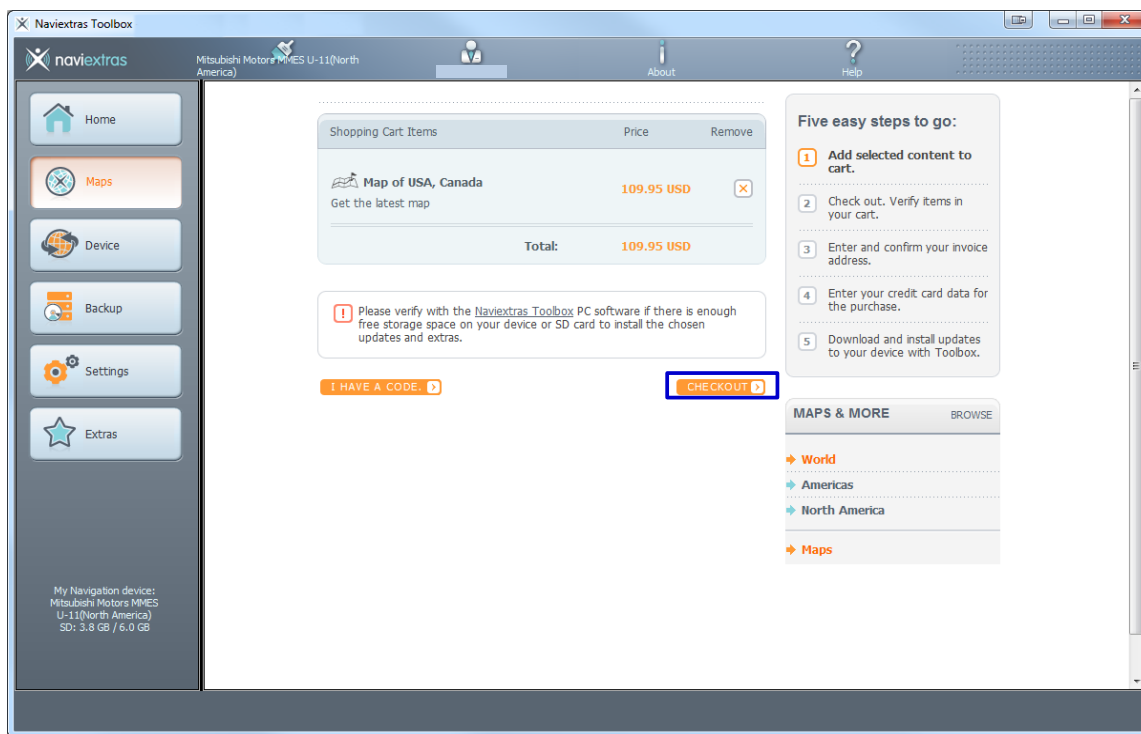
6-2. Press "ADD TO CART".



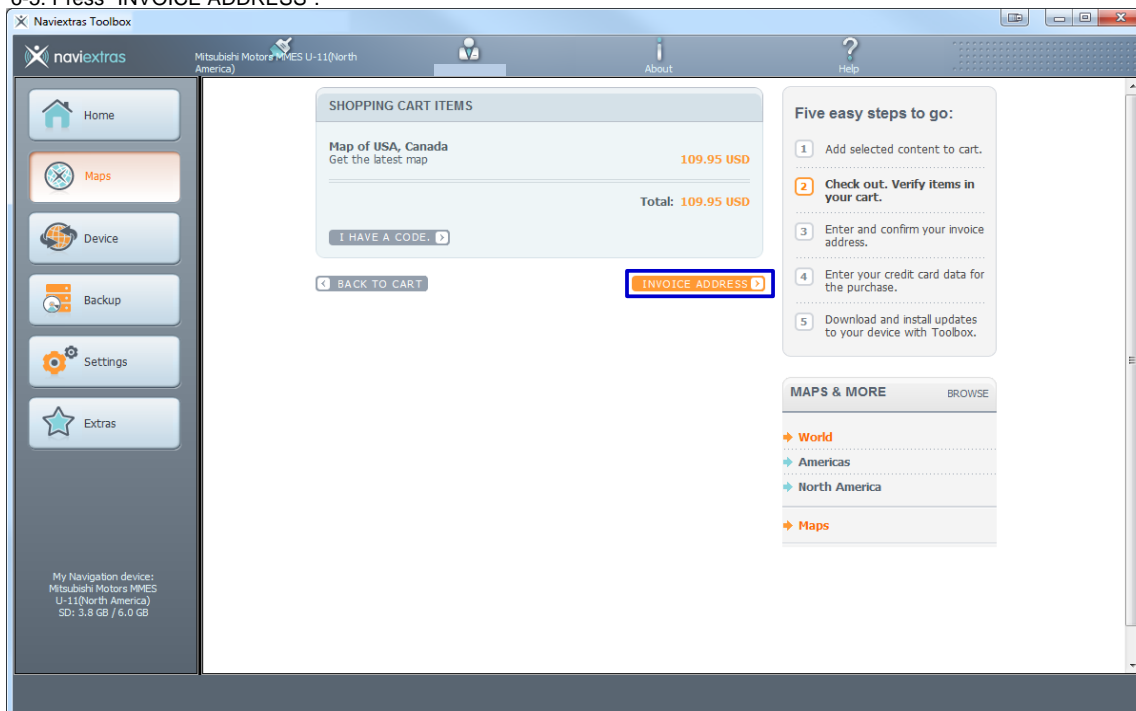
6-3. Press "GO TO CHECKOUT".



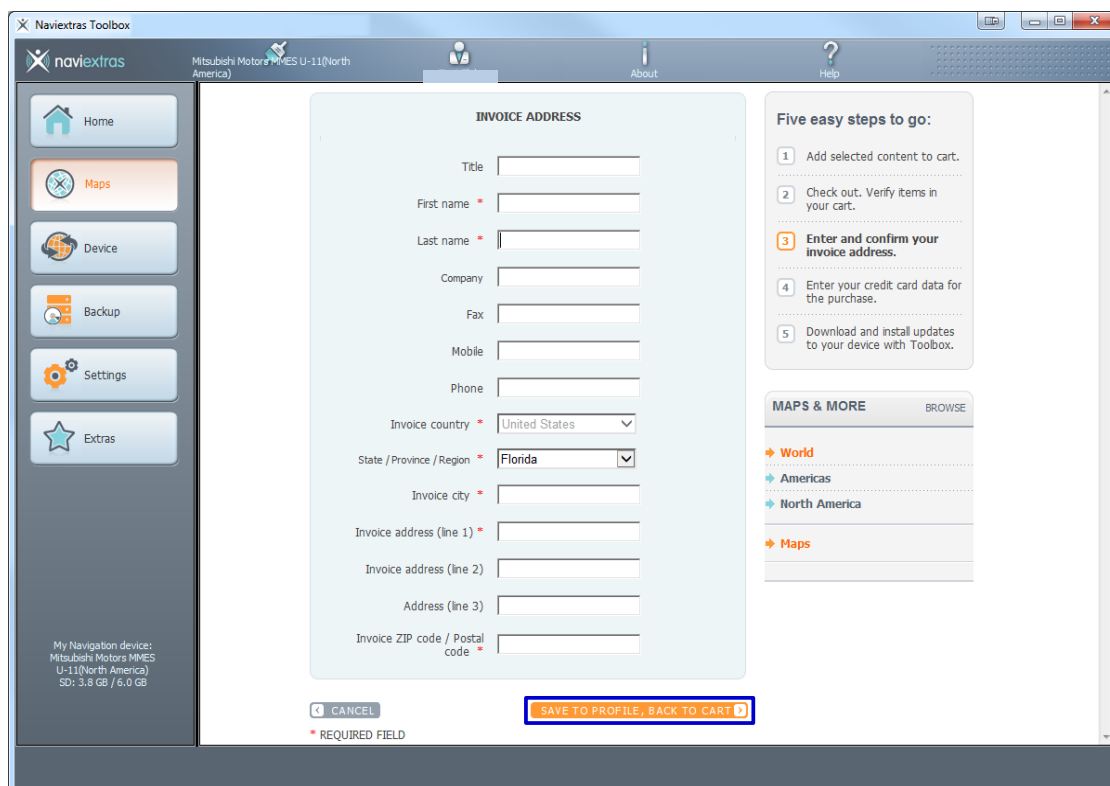
6-4. Press "CHECKOUT".



6-5. Press "INVOICE ADDRESS".



6-6. Fill in the must items and press "SAVE TO PROFILE, BACK TO CART".



INVOICE ADDRESS

Title

First name

Last name

Company

Fax

Mobile

Phone

Invoice country

State / Province / Region

Invoice city

Invoice address (line 1)

Invoice address (line 2)

Address (line 3)

Invoice ZIP code / Postal code

Five easy steps to go:

- 1 Add selected content to cart.
- 2 Check out. Verify items in your cart.
- 3 Enter and confirm your invoice address.
- 4 Enter your credit card data for the purchase.
- 5 Download and install updates to your device with Toolbox.

MAPS & MORE [BROWSE](#)

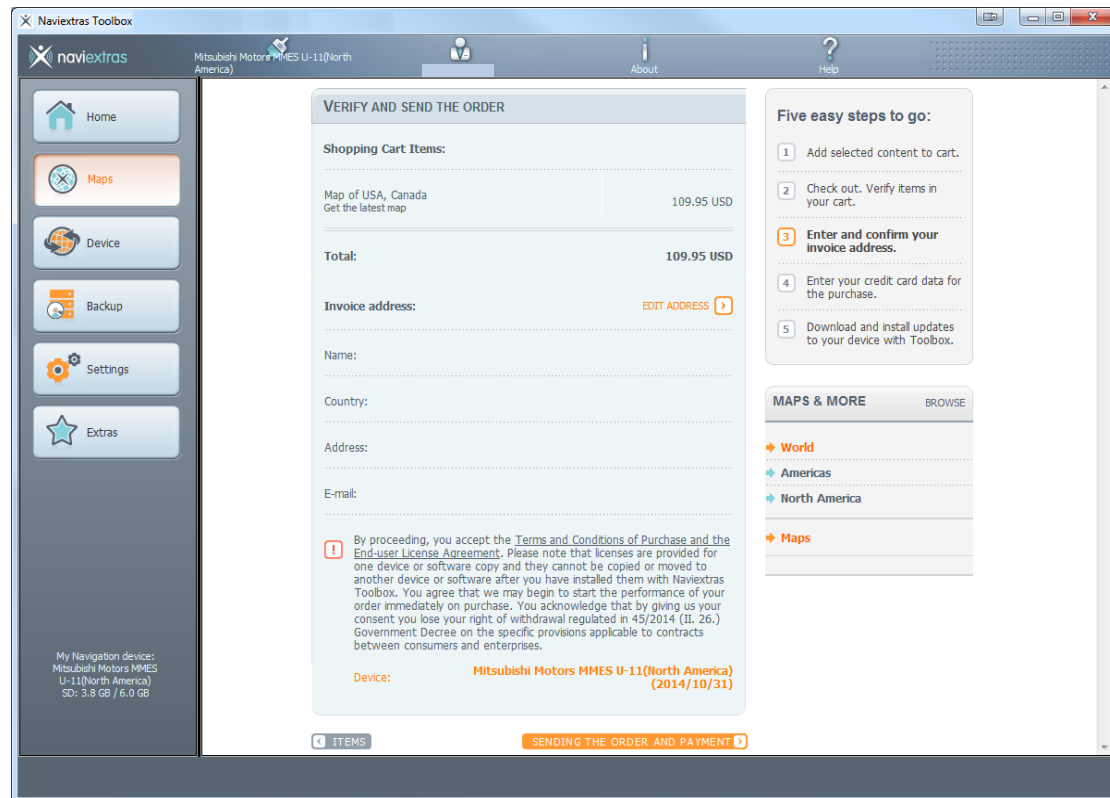
- World
- Americas
- North America
- Maps

My Navigation device:
Mitsubishi Motors MMES U-11(North America)
SD: 3.8 GB / 6.0 GB

[CANCEL](#) [SAVE TO PROFILE, BACK TO CART](#)

* REQUIRED FIELD

6-7. Press "SENDING THE ORDER AND PAYMENT".



VERIFY AND SEND THE ORDER

Shopping Cart Items:

Map of USA, Canada Get the latest map	109.95 USD
Total:	109.95 USD

Invoice address: [EDIT ADDRESS](#)

Name:

Country:

Address:

E-mail:

By proceeding, you accept the Terms and Conditions of Purchase and the End-user License Agreement. Please note that licenses are provided for one device or software copy and they cannot be copied or moved to another device or software after you have installed them with Naviextras Toolbox. You agree that we may begin to start the performance of your order immediately on purchase. You acknowledge that by giving your consent you lose your right of withdrawal regulated in 45/2014 (II, 26.) Government Decree on the specific provisions applicable to contracts between consumers and enterprises.

Device: Mitsubishi Motors MMES U-11(North America) (2014/10/31)

Five easy steps to go:

- 1 Add selected content to cart.
- 2 Check out. Verify items in your cart.
- 3 Enter and confirm your invoice address.
- 4 Enter your credit card data for the purchase.
- 5 Download and install updates to your device with Toolbox.

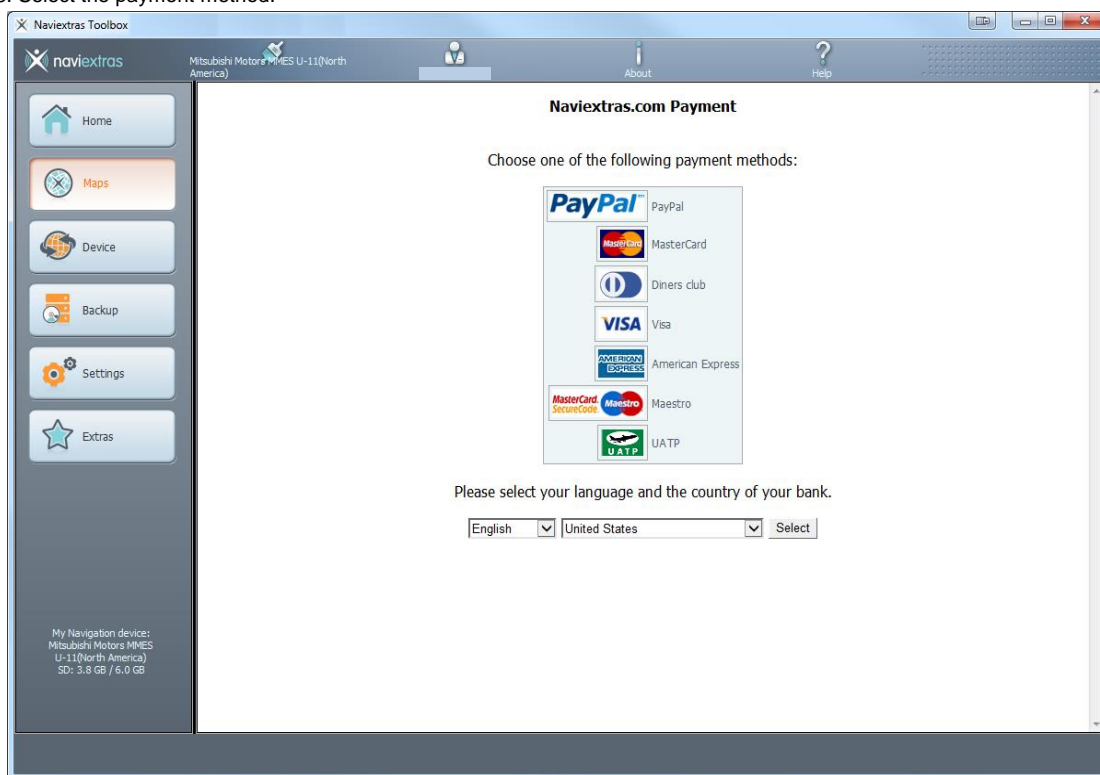
MAPS & MORE [BROWSE](#)

- World
- Americas
- North America
- Maps

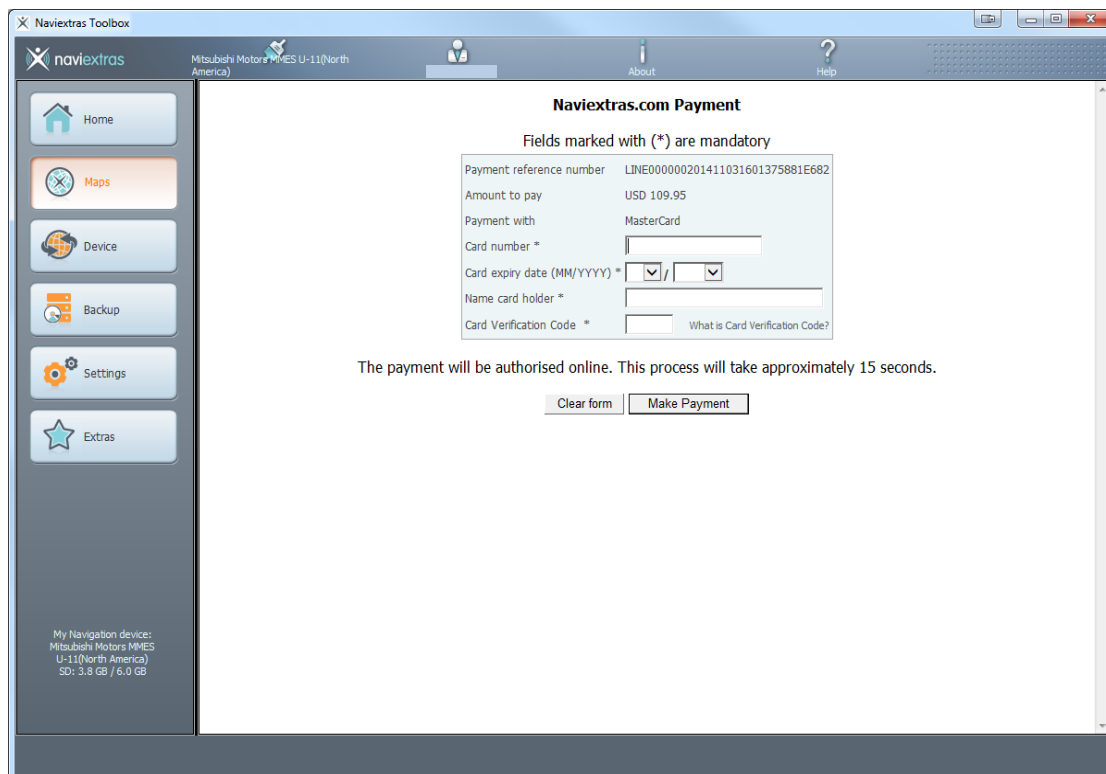
My Navigation device:
Mitsubishi Motors MMES U-11(North America)
SD: 3.8 GB / 6.0 GB

[ITEMS](#) [SENDING THE ORDER AND PAYMENT](#)

6-8. Select the payment method.

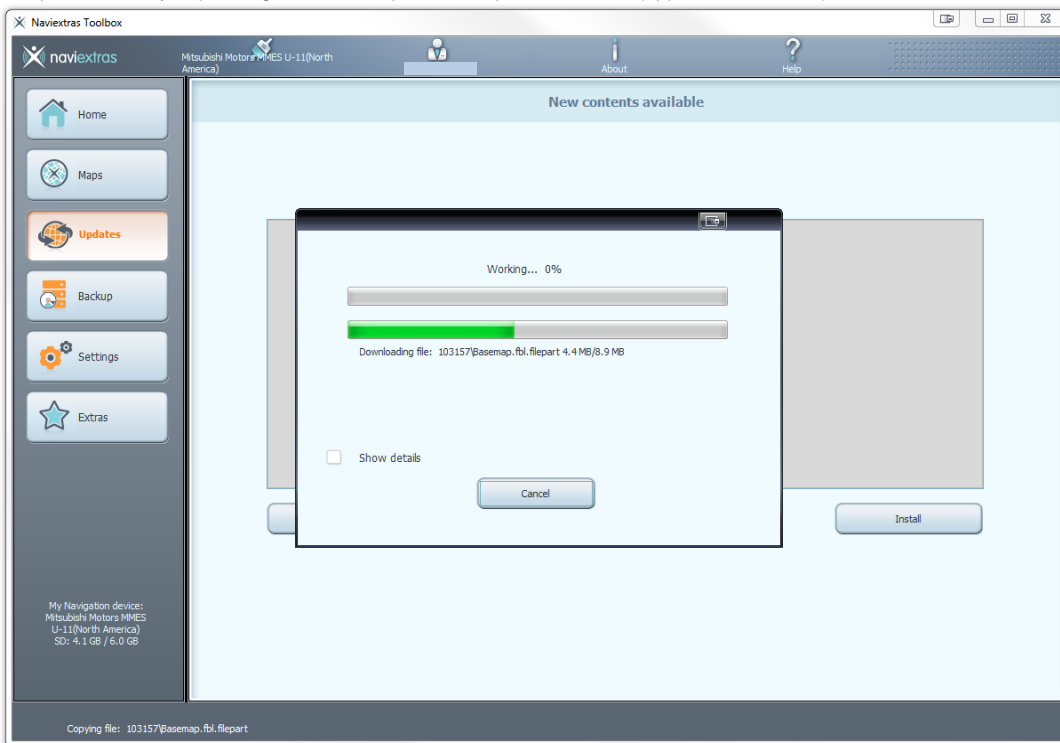


6-9. Input the Card number, Expiration date, Name, Verification code, and press "Make Payment".



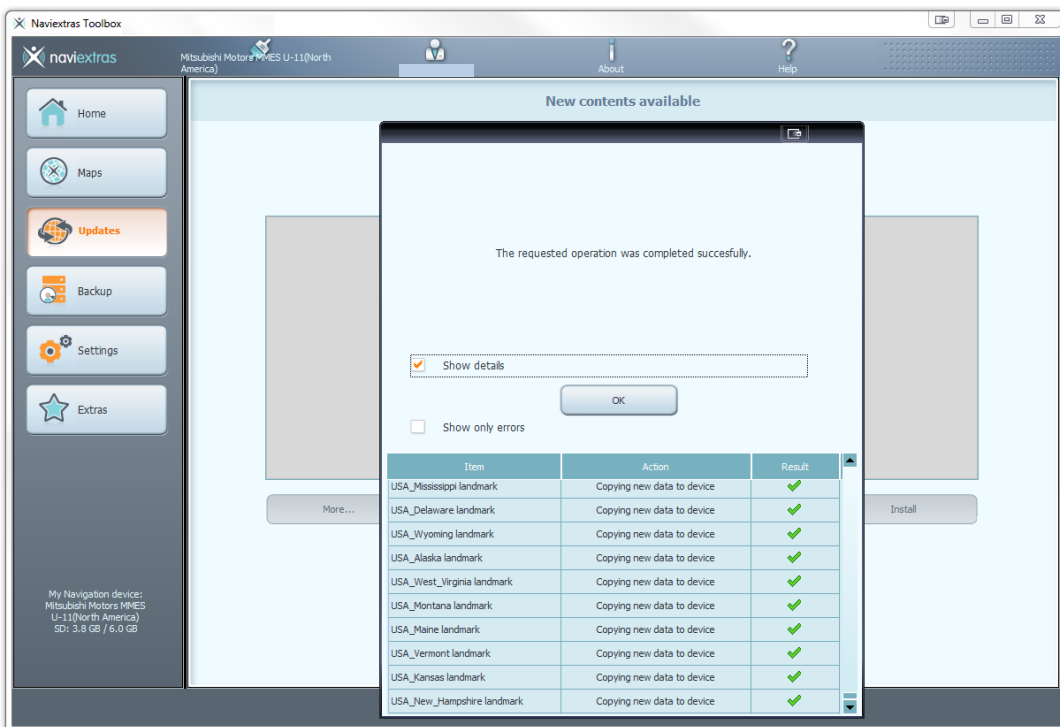
7. Map Updating Map Data

7-1. The update will vary depending on internet speed and updated content (approx.. 2 to 3.5hrs).

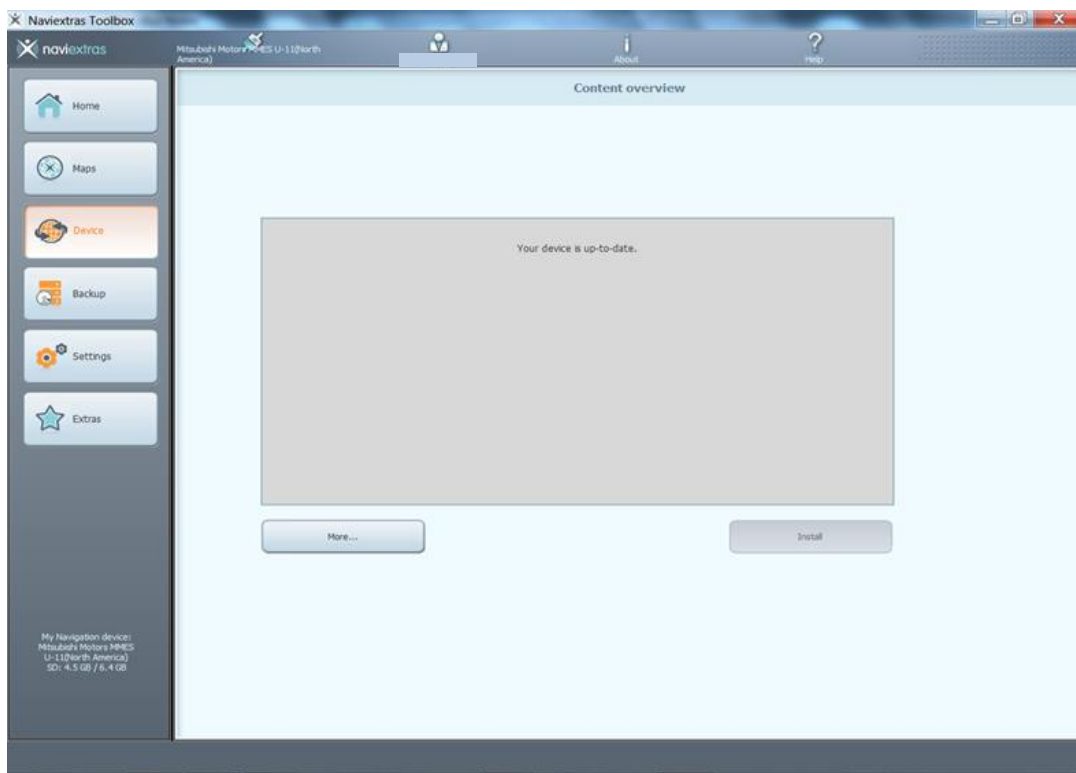


7-2. The following page indicates that you have successfully updated the map data or you may see the following statement:

"The requested operation was finished. There were some errors during the process. Please check the details for more information". Please select "Close" or "Send error report"

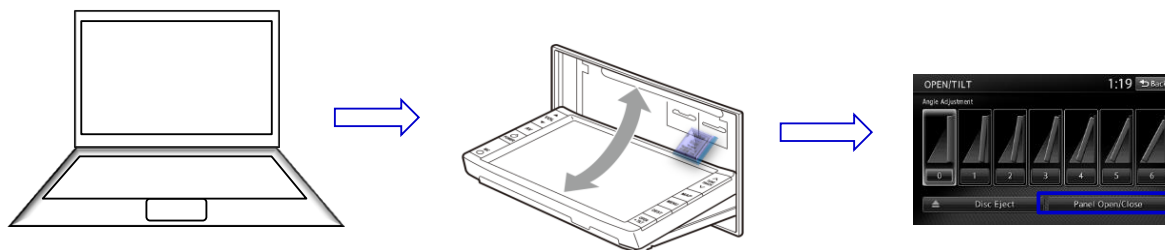


7-3. The next will display "Your device is up to date." Process complete.



8. Confirmation

8-1. Eject MAP SD from PC and insert it into navigation



8-2. Close Map SD cover

8-3. Close navigation panel and restart navigation by turning ignition switch off and back to on position.

Process Complete