

# Owner's Handbook



## OUTLANDER SPORT



PLEASE PLACE COPIES OF THE FOLLOWING ITEMS IN THE POCKET BELOW:

1. Pre-Delivery Inspection Form (Customer Copy)
2. Triple Diamond Delivery Checklist (Customer Copy)
3. Salesperson or Key Dealership Contact's Business Card



Thank you for buying a Mitsubishi Outlander Sport. There's no doubt you've already realized how well your car drives on the open road. What you may not know is all the great features that help your car perform the way it does. In the pages ahead we're going to run through the basics and prepare you for the road.

We'd also love to hear from you about your overall Mitsubishi experience. If you haven't already, please log on to [www.MitsubishiSSIsurvey.com](http://www.MitsubishiSSIsurvey.com) and tell us how we did. This will help us make sure your next visit is that much better.

We hope you will visit the Mitsubishi Owner's site where we store the latest Mitsubishi news and special offers. Here you can also keep track of your car's warranty and servicing needs, get Roadside Assistance Information and tap into other owner-centric details. Just log on to [www.Mitsubishicars.com/ownersonly](http://www.Mitsubishicars.com/ownersonly).



### **“How-To” Videos**

Scan this QR code with your smartphone or key in to your internet enabled device [mitsubishicars.com/howtoqr](http://mitsubishicars.com/howtoqr) to access brief “How-To” videos regarding specific features on your new Outlander Sport. Here you will find simple instructions to help make your ownership experience more enjoyable.

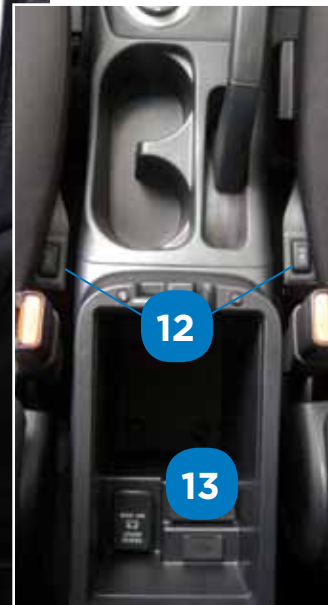
## **Table of Contents**

Driver's View.....	Page 2-3
Controls.....	Page 4-5
Own the Road.....	Page 6
Audio System.....	Page 7
Navigation System.....	Page 8-9
Technology .....	Page 10
FUSE Hands-Free Link System™.....	Page 11
FAQ's .....	Page 12-13

## Driver's View

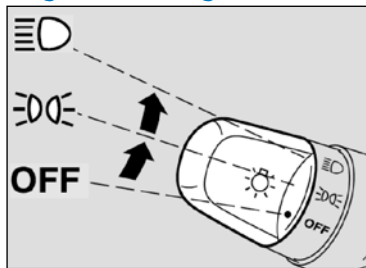
- 1** Headlights and Fog Lights.....Page 4
- 2** Paddle Shifters.....Page 5
- 3** Windshield Wiper Lever .....Page 4
- 4** Side Mirror Adjustment.....Page 2
- 5** Audio Remote Control Switch .....Page 8
- 6** Cruise Control .....Page 5
- 7** Bluetooth® Controls.....Page 10, 12
- 8** Clock.....Page 5
- 9** Audio System .....Page 8
- 10** Air Conditioning.....Page 4
- 11** Navigation System.....Page 6 - 7
- 12** Seat Heater .....Page 5
- 13** USB Input .....Page 8







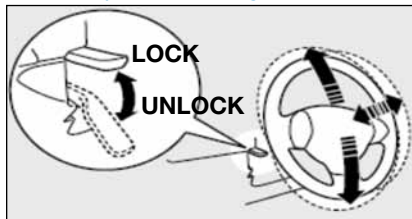


### Regular Headlights



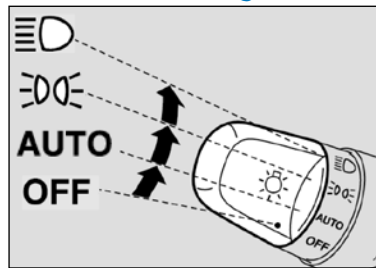
-  Headlights and other lights on.
-  Parking, tail, front and rear sidemarker lights, license plate and instrument panel lights on.
- AUTO** Headlights and other lights turn on and off automatically in accordance with outside light level.
- OFF** All lights off

### Telescopic Steering



Telescopic Steering Wheel - located on the underside of the steering column is a lever that unlocks the steering column and allows adjustment of the height and distance of the steering wheel to the driver. When adjustments are complete, push the lever back to its original position to lock the steering wheel in place. Adjust the steering wheel only when the vehicle is at a complete stop.

### Automatic Headlights



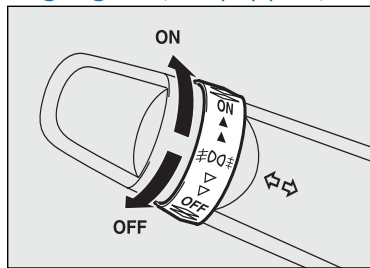
### Engine Switch



### Stopping the Engine

1. Stop the vehicle.
2. Fully engage the parking brake while depressing the brake pedal.
3. On vehicles with a manual transaxle, press the engine switch to stop the engine, and then move the gearshift lever to the 1st (on a uphill) or "R" (Reverse) (on a downhill) position. On vehicles equipped with continuously variable transmission (CVT), move the selector lever to the "P" (Park) position, and then press the engine switch to stop the engine.

### Fog Lights (if equipped)

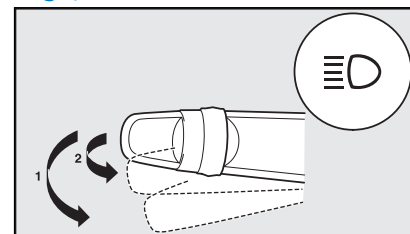


Fog Lights will illuminate only when headlights are on low beam. Turning the knob in the direction of the ON position turns on the fog lights. Turning the knob in the direction of the OFF position turns off the fog lights. The knob will return to the neutral position when released.

### Starting the Engine

1. Make sure the parking brake is applied.
2. Press and hold the brake pedal down with your right foot.
3. Press and hold the clutch pedal all the way down (manual transaxle). On vehicles equipped with manual transaxle, place the gearshift lever in the "N" (Neutral) position. On vehicles equipped with continuously variable transmission (CVT), make sure the selector lever is in the "P" (Park) position.
4. Press the engine switch.

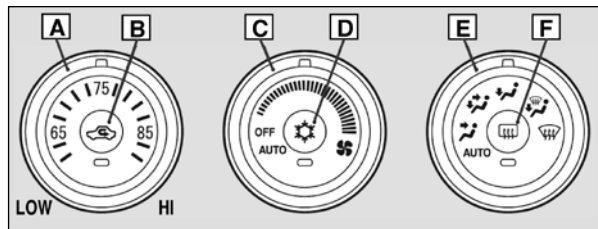
### High/Low Beam Switch



To change the headlights from high beam to low beam and vice versa, pull the turn signal lever fully towards you (1). An illuminated blue light in the instrument cluster indicates when the headlights are on high beam.

- Headlight flasher  
You can flash the high beams by pulling the lever gently towards you (2).

## Air Conditioning (Automatic shown)



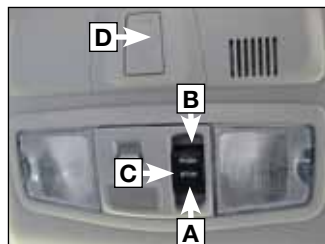
- A** - Turn for Temperature control
- B** - Push to select outside air (Indicator light off) or recirculated air (Indicator light on)
- C** - Turn to select the blower speed. To the right increases blower speed. To the left decreases blower speed. Turned all the way to the left turns the blower off. Note: OFF is located above AUTO.
- D** - Push for air conditioning ON/OFF (Indicator light on/Indicator light off).
- E** - Turn to select the air flow and direction mode (AUTO position is only auto type air conditioning).
- F** - Push to defog the rear window (Indicator light on). Rear window defogger light automatically turns off after 20 minutes.

### To defog front windshield

- Set the Mode Dial **E** to defrost position.
- Set the blower speed **C** to the maximum position.
- Set the temperature **A** to highest position.

## Sunshade

The sunshade can be operated with the ignition switch or the operation mode in ON.

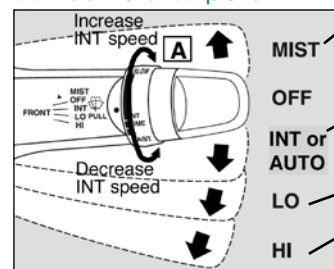


- A** - Pull the switch in the arrow direction to open the sunshade. Pulling the switch all the way automatically opens the sunshade completely.
- B** - Push the switch in the arrow direction to close the sunshade. Pulling the switch all the way automatically closes the sunshade completely.
- C** - Push the switch to stop the moving sunshade. If an object obstructs the sunshade from closing the safety mechanism will cause the sunshade to re-open automatically. The opened sunshade will become operational again after a few seconds.

The sunshade illumination turns on with the ignition switch or when the operation mode is in ON or ACC.

- D** - Push the switch to change brightness of the sunshade illumination. The brightness switches in sequence from high → middle → low → off → high.

## Windshield Wipers



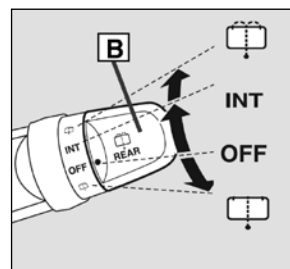
The wipers will operate once.

**INT:** Intermittent intervals can be adjusted by turning the knob **A**

**AUTO:** The wipers will be operated automatically by rain sensor (if so equipped).

Slow  
LO  
Fast  
HI

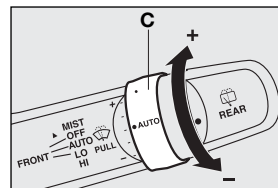
## Rear Window Wiper/Washer



Turn the knob **B** to operate the rear window wiper.

The wiper operates continuously for several seconds then operates intermittently at intervals of about 8 seconds.

Washer fluid is sprayed, the wiper will automatically operate 2 or 3 times.



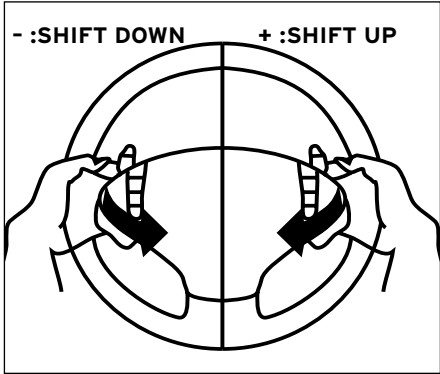
## Rain Sensing Wipers (if equipped)

It is possible to adjust the sensitivity of the rain sensor by turning the AUTO ring (C).

+ Higher sensitivity to rain  
- Lower sensitivity to rain

# OWN THE ROAD

## Paddle Shifters (if equipped)



Simply upshift or downshift with a tap of your fingers, without moving your hands from the steering wheel.

You can return to the automatic shifting mode by pulling the + (SHIFT UP) side paddle shifter towards you and holding for over **2 seconds**.

## Cruise Control



- A - CANCEL:** To deactivate the cruise control
- B - ACC RES:** To increase the set speed or resume previously set cruise control operation.
- C - COAST SET:** To set the desired speed and to reduce the set speed
- D - ON/OFF:** To turn ON/OFF cruise control

**To set a cruising speed**

- Press **D** and the **CRUISE** indicator light in the meter

- cluster will be turned on.
- Accelerate or decelerate to your desired speed (above 25 mph). Press **C** and remove your foot from the accelerator pedal.

### To accelerate or decelerate speed

Press **B** to increase set cruising speed.  
Press **C** to decrease set cruising speed.

### To cancel the cruising speed

Press **A** or press brake pedal, or press **D**.

## Drive Mode Selector (if equipped)



The drive mode can be switched by turning the dial while the ignition switch is in the ON position. The following drive modes are available:

**2WD:** This mode is for economical driving on normal dry roads and freeways.

**4WD AUTO:** This mode is for all driving conditions on various roads.

**4WD LOCK:** This mode is for driving in slippery conditions such as on snow-covered roads or sand.

## Clock



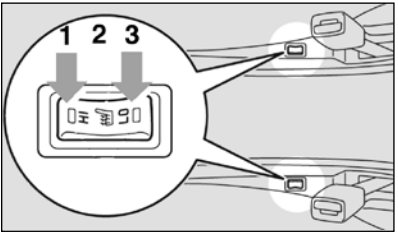
### To set the time

- Press and hold **A** and the clock display flashes.
- Press **C** to set the "Hours".
- Press **D** to set the "Minutes".
- Press **B** to stop the clock display from flashing.

## Seat Heater Switch

### Position - Action

- 1 (HI)** - For quick heating
- 2** - Heater off
- 3 (LO)** - To keep the seat warm



## ECO Driving



When the ECO indicator light is on, your current driving style supports good fuel economy. ECO light will only work in a normal mode. It will not illuminate in either Sport Mode or with Cruise Control on.



## Storing a Station to Memory



### To enter frequencies into the memory (AM/FM/SAT)

1. Press **A** to turn on the audio system.
2. Press **B** to select the desired band (AM/FM/SAT).
3. Turn **C** to the desired frequency you wish to keep in the memory.

4. Press one of the Memory select buttons **D** (1-6) until it beeps. Your station is now stored in that location.

## Loading a CD

1. Press the **LOAD** button **E** briefly.
2. The autochanger will show **WAIT** on the display and start making itself ready for disc loading.
3. When the autochanger is ready for disc loading, the **LOAD** indicator will illuminate and the display will show **LOAD DISC No. (1-6)**.
4. When a disc is inserted into the CD slot, the disc will begin to play.

## Audio Remote Control Switch (if equipped)

**VOLUME**  
UP  
DOWN

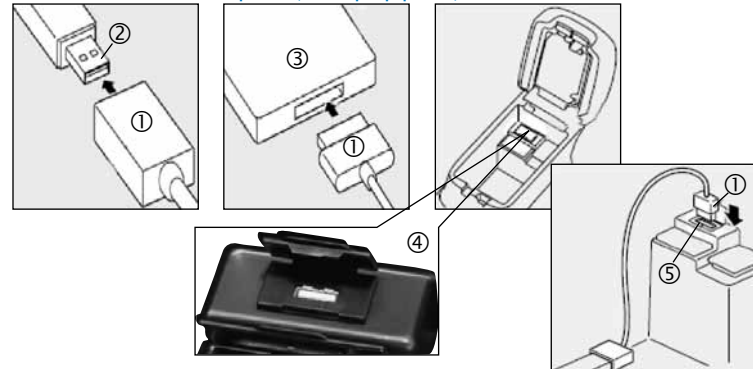


**SEEK**  
Change station or track

**MODE**  
Change the audio source

**NOTE:** Please refer to Comfort Controls in your Owner's Manual for more detailed information on how to use your audio system.

## USB and iPod® Input (if equipped)



1. Park your vehicle in a safe place and turn the ignition to the lock position.
2. Connect the cable ① (cable purchased separately) to the USB memory device ② or the Dock connector ① to the iPod® ③.
3. Open the cover ④ in the glove compartment. Connect the cable ① to the USB input terminal ⑤.
4. Turn the ignition switch to the "ACC" position. Press **A** to turn on the audio system.
5. Press the CD button **B** several times to switch to the USB mode. The input mode changes as follows:  
**CD → USB → Bluetooth® (if equipped)**
6. Depending on your USB device, it may take longer for playback to start. The number of songs in the device will determine the length of time it takes to load. Typical times are from 1 minute to 8 minutes.
7. Once the device is selected, playback starts.

**NOTE:** You can select desired tracks from the "Playlist", "Artists", "Album" or "Songs" menus stored in your iPod® or desired folder in your USB memory device. Turn the FOLDER knob **C** to the desired location then press it in to select your folder.



Point of Interest (POI) Name



- 1 Press the [MENU] key to display.
- 2 Touch [Point of Interest].



- 3 Input the "State" and "City"



- 4 Touch [All Categories]



- 5 Touch the category of the desired POI and category type to select.



- 6 Touch [All POIs]



- 7 Input the POI name



- 8 Touch [Set]

**Way Points** – Once you have set a destination, you can enter additional stops along the way called Way Points. For details on how to set Way Points refer to your Navigation Owner’s Manual.

**Saving Addresses** - To save an address, first enter the address into the system. Then touch [Address Book] and confirm location to be stored. Touch [Set to Address Book] to complete.

# Searching for a Location by Address / Location



1 Press the [MENU] key to display.

2 Touch [Address/Intersection].



3 Touch the "State" and "City" button



4 Input the "State" and "City" name



5 Touch [All Streets]



6 Input the street name



7 Touch [List] to select a street from the list



8 Touch House # or intersection



9 Touch [Set]

## Keyless Entry System

[F.A.S.T. Key]



### LOCK

Press: Once - Lock all doors

### UNLOCK

Press: Once - Unlock driver door  
Twice - Unlock all doors

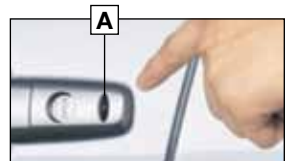
### PANIC

Press and hold. Press any button to turn off panic.

[Normal Key]

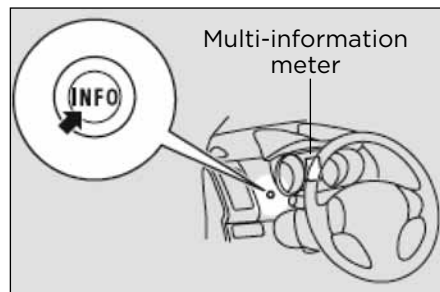


The Free-hand Advanced Security Transmitter (F.A.S.T. Key) enables the engine to be started and the operation mode to be changed simply by carrying it.



To lock or unlock the doors while carrying the F.A.S.T. key, press the driver's or front passenger's door lock/unlock switch [A].

## Multi-information Meter Switch (INFO Button)



Change display information by pushing the INFO button. Warnings, Odometer/Tripmeter, Service reminder, Engine coolant temperature, Average and momentary fuel consumption, Driving range and average speed, etc.

## Tire Pressure Monitoring System (TPMS)

The Tire Pressure Monitoring System light illuminates when one or more of your tires is significantly underinflated. Please note that changes in the outside temperature may decrease tire pressure causing the TPMS light to turn on. If the TPMS light remains illuminated, check your tire pressure.

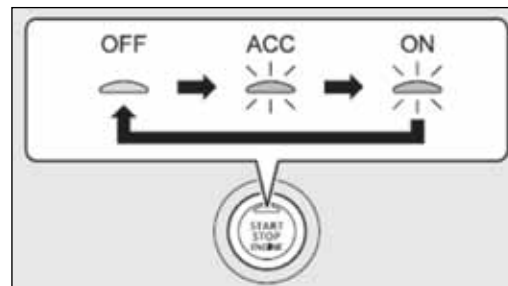


Warning light illuminates when tire pressure is too low.



If warning light illuminates, contact MITSUBISHI dealer. (May be a TPMS system issue or malfunction.)

## Changing the Operation Mode



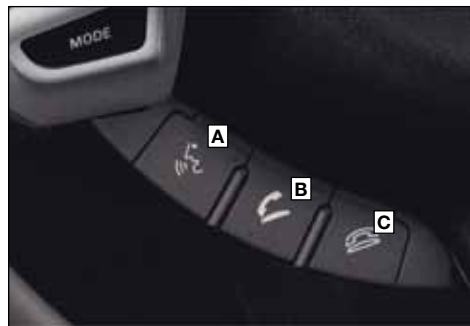
If you press the engine switch without pressing the brake pedal or the clutch pedal (manual transmission) while the vehicle is stationary, you can change the operation mode in the order of OFF, ACC, ON, OFF.

(if so equipped)

**Tip on Getting Started:**

Before using FUSE for the first time, press the SPEECH button and say "Help". This will walk you through some tips and help set-up your recognition profile.

For a list of compatible Bluetooth® devices please go to <http://www.mitsubishicars.com/MMNA/jsp/owners-site/technology-features.do>



- A SPEECH button:**  
Change to voice recognition. Pushing this button initiates the bluetooth system. The system asks for a command.
- B PICK-UP button:**  
Answer an incoming call
- C HANG-UP button**  
End a call or voice recognition

**To pair a Bluetooth® enabled device:**

1. Park your vehicle in a safe location. Pairing can not be done while vehicle is moving.
2. Press **A** button and Say "Setup."
3. Say "Pairing Options."
4. The voice guide says: "Select one of the following: pair, edit, delete, or list."
5. Say "Pair."
6. The voice guide says "Please say a 4-digit pairing code."
7. Say a 4-digit number "XXXX."
8. When the confirmation function is on, the system will confirm whether the number said is acceptable. Answer "Yes."
9. The voice guide says "Start pairing procedure on the device. See the device manual for instructions." Enter in the Bluetooth® device the 4-digit number you have registered in step 8.

**Making a call by using the telephone number:**

1. Press **A** button and Say "Dial."
2. The voice guide says "Number please."
3. Say the telephone number "XXX....."
4. The voice guide says "Dialing <number recognized>."

**Making a call using a phonebook:**

1. Press **A** button and Say "Call."
2. After the voice guide says "Name please." Say the name you want to call "XXX....."
3. If there is only 1 match, the voice guide says "Calling <name>" and then the system will dial the telephone number.

**Receiving calls:**

1. If an incoming phone call is received while the ignition switch is in the "ACC" or "ON" position, with the audio system OFF, the audio system automatically turns ON.
2. Press **B** button.

**Hanging up a call:**

1. Press **C** button.

**To import a devices phonebook:**

1. Press **A** button and Say "Phonebook."
2. The voice guide will say "Select one of the following: new entry, edit number, edit name, list names, delete, erase all, or import contact." Say "Import contact."
3. The voice guide will say "Would you like to import a single entry or all contact?" Say "All contacts."
4. The voice guide will say "Importing the contact list from the mobile phonebook. This may take several minutes to complete. Would you like to continue?" Answer "Yes."
5. When the import is complete, the voice guide will say "Import complete."

If you are having difficulties operating your phone or connecting to the system, please call Mitsubishi Handsfree at **(888) 702-4100**.





**Q: What should I do when my engine is hard to start?**

A: Pressing on the accelerator pedal about half way down while cranking the engine may make it easier to start. When the engine starts, release your foot from the accelerator pedal.

**Q: Is my phone compatible with the factory Mitsubishi Bluetooth® Hands Free System?**

A: Check the phone approval list, [www.mitsubishicars.com/owners](http://www.mitsubishicars.com/owners) to see if the phone is Bluetooth® approved.

**Q: Why doesn't my device (USB, iPhone, Bluetooth® Audio, etc.) work?**

A: You need to press the Mode button to select the appropriate device you want to use.

**Q: How do I use Bluetooth® Audio (if equipped)?**

A: Turn the Audio System power on. Press the CD button several times until B (Bluetooth®) is shown. Connect your Bluetooth® device via pairing mode. Playback will start automatically.

**Q: How do I transfer calls from Bluetooth® back to my mobile phone's handset?**

A: While on the call, press the speech button on your steering wheel and, once prompted, say "Transfer Call."

**Q: Why does the FUSE Hands-free Link System™ take so long to upload my music from my audio music device?**

A: The Mitsubishi system can read multiple device structures in order to catalog the music files for easy playing and listening. Depending on the amount of music you have on your device, this may take a few minutes.

**Q: What are the different ways of playing music from my portable music player through the stereo system in my vehicle, when equipped with the FUSE Hands-free Link System™?**

A: There are three ways of playing music through your vehicle's sound system.

- USB port - The FUSE system will find the songs in your device and categorize them according to Artist, Album, and Genre. Then you can have the FUSE system find and play the song in your device that you prefer without physically searching your device. This is done via voice commands. Note: In this mode the storage device will also be charged.
- Bluetooth® Streaming - Once your device is paired to the FUSE system, you can stream music from your device through the FUSE system to your vehicles sound system. No wires or cords. Your music stops and restarts at the same song when you exit and when you re-enter the vehicle. Voice commands are not available.
- RCA auxiliary ports - Music can be played through a vehicles stereo system via the head phone port of your music device (An RCA to mini headphone jack adapter cable will be needed) Voice command is not available.

**Q: Why can't I control the music track selection via voice commands while Bluetooth® streaming?**

A: The Mitsubishi system is not configured to support this functionality.

**Q: My Outlander Sport is equipped with "Micron Air Filtration". Where is the filter located and does it need servicing?**

A: The micron air filter is a small filter element which is located in the HVAC box just behind the glove box. The filter should be inspected frequently for debris. The filter works well at filtering incoming air however the filter will clog and lead to reduced outlet air volume if not serviced on a regular basis.

**Q: My Outlander Sport has two 12V accessory outlets. What devices can be plugged into these outlets?**

A: Both of these outlets are protected with 15 amp fuses. Always check the current draw rating of any device prior to use in the vehicle. If the device is rated above 12 amps, this could lead to circuit overload and the electrical fuse opening (no current flow).

**Q: I only have one remote for the remote start system on my Outlander Sport. Can I get a second one?**

A: No. Only one remote can be programmed per vehicle for security reasons.

**Q: How can I get the MPG stated on the window sticker?**

A: Vehicle driving styles will greatly affect MPG. Avoid sudden abrupt starts from a stop and let the vehicle coast to the traffic light. Both of these styles will increase mileage and reduce brake lining wear.

- Vehicles are designed to achieve the best fuel mileage when they are driven at the speed limits on the freeway. Avoid driving over 65 mph.
- Under inflated tires will increase rolling resistance and will reduce fuel mileage. Check tire pressure frequently to increase miles per gallon. Proper tire pressure also ensures optimum tire performance (including tire wear.)

**Q: How does the Navigation System choose a certain route?**

A: The system takes into account traffic conditions, road types, distance and road width to recommend the route.

**Q: Why does my Anti-Lock Braking System (ABS) make a noise?**

A: Each time your vehicle is started and driven a short distance, you will hear the sound of the ABS motor operating from the right front engine compartment. This is the normal sound the Anti-Lock Braking System makes when performing a self check.

**Q: Why do my Rain Sensing Windshield Wipers operate on their own when it's not raining?**

- A:
- When the lever is in the AUTO position, the rain sensor detects rain or snow and automatically turns on the wipers.
  - The wipers may automatically operate when things such as insects or foreign objects are affixed to the windshield on top of the rain sensor or when the windshield is frosted over.
  - To stop the wipers, place the lever in the OFF position.

**Q: Why does my check engine light come on after I put gas in my car?**

A: There are many reasons why your check engine light may illuminate. Before calling your dealership, make sure the fuel cap is fully engaged and you have heard three clicks when tightening it. After checking and hearing three clicks and the light is still on, contact your dealership.

**Q: How do I use the emergency key when the F.A.S.T. key battery or vehicle battery is run down?**

A: Remove the emergency key from the F.A.S.T key fob and manually unlock the door. Once inside the vehicle insert the F.A.S.T. key fob into the key slot in the glove box. Starting the engine and changing the operation mode should now be possible. Remove the F.A.S.T. key from the slot after starting the engine or changing the operation mode.





[www.mitsubishicars.com](http://www.mitsubishicars.com)