



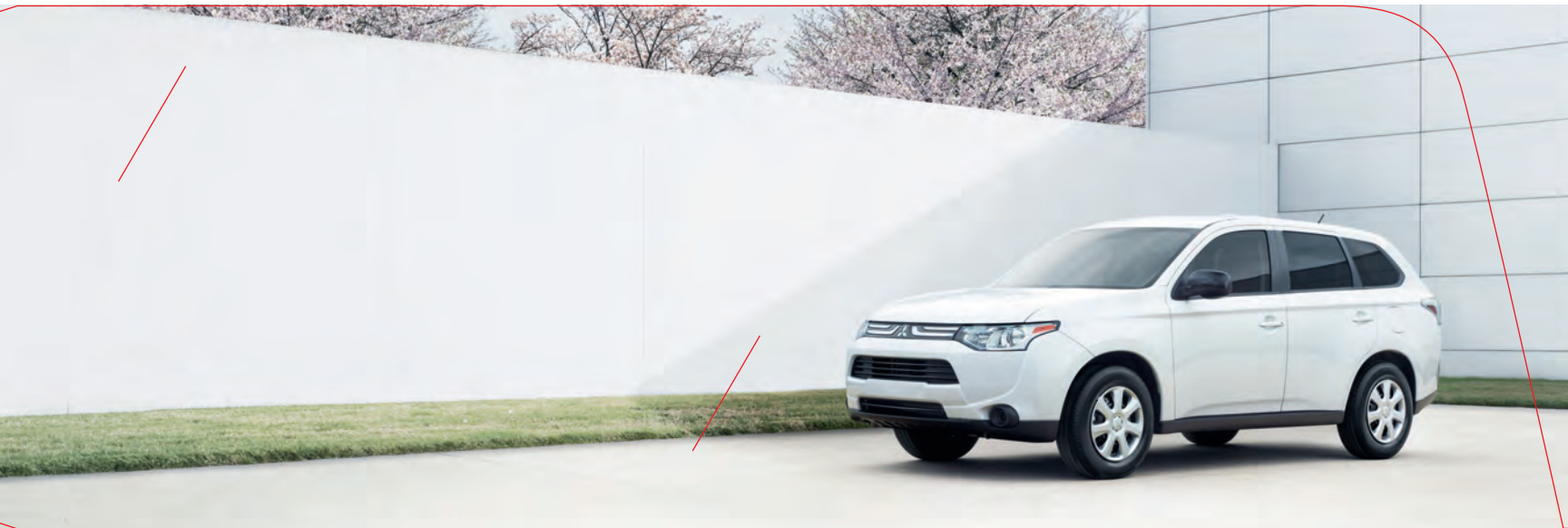
2014 OUTLANDER

Owner's Handbook



PLEASE PLACE COPIES OF THE FOLLOWING ITEMS IN THE POCKET BELOW:

1. Pre-Delivery Inspection Form (Customer Copy)
2. Triple Diamond Delivery Checklist (Customer Copy)
3. Salesperson or Key Dealership Contact's Business Card



Thank you for buying a Mitsubishi Outlander. There's no doubt you've already realized how well your car drives on the open road. What you may not know is all the great features that help your car perform the way it does. In the pages ahead we're going to run through the basics and prepare you for the road.

We'd also love to hear from you about your overall Mitsubishi experience. If you haven't already, please log on to **www.MitsubishiSSIsurvey.com** and tell us how we did. This will help us make sure your next visit is that much better.

We hope you will visit the Mitsubishi Owner's site where we store the latest Mitsubishi news and special offers. Here you can also keep track of your car's warranty and servicing needs, get Roadside Assistance Information and tap into other owner-centric details. Just log on to **www.Mitsubishicars.com/ownersonly**.

Table of Contents

Driver's View	Page 2-3
Controls	Page 4
Own the Road	Page 5
Switches	Page 6
ECO Driving	Page 7
Folding and Stowing the Second and Third Row Seat (if equipped)	Page 8
Technology	Page 9
Audio System	Page 10
Display Audio System (if equipped)	Page 11-12
HD Weather and Fuel (if equipped)	Page 12
Bluetooth® (if equipped)	Page 13
Navigation System (if equipped)	Page 14-15
FAQ's	Page 16-17



Driver's View

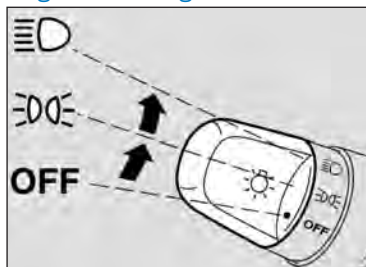
- 1** Side Mirror Adjustment..... Page 4
- 2** Climate Controls..... Page 4
- 3** Headlights Page 4
- 4** Windshield Wiper Lever..... Page 4
- 5** Adaptive Cruise Control (if equipped) ... Page 5
- 6** Paddle Shifters (GT only) Page 5
- 7** Seat Heater Switch Page 5
- 8** Lane Departure Warning (LDW) and Forward Collision Mitigation (FCM) (if equipped)..... Page 6
- 9** Power Liftgate Main Switch (if equipped)..... Page 6
- 10** ECO Mode Switch Page 7
- 11** Multi Information Display (MID)..... Page 9
- 12** Start/Stop Engine Switch (if equipped with F.A.S.T.-key)..... Page 9
- 13** Audio Remote Control Buttons (if equipped)..... Page 10
- 14** Display Audio and Navigation System (if equipped)..... Page 11-12, 14
- 15** Bluetooth® Controls (if equipped) Page 13



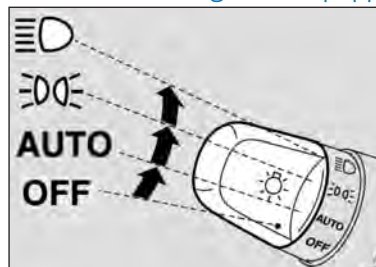


CONTROLS

Regular Headlights



Automatic Headlights (if equipped)



Headlights and other lights on.



Parking, tail, front and rear sidemarkers, license plate and instrument panel lights on.

AUTO

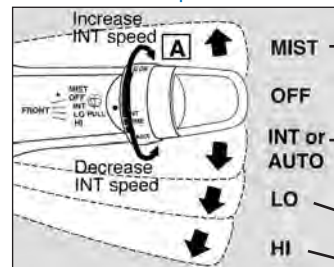
Headlights and other lights turn on and off automatically in accordance with outside light level.

OFF

All lights off

Pull lever toward driver to activate high beams.

Windshield Wipers



The wipers will operate once.

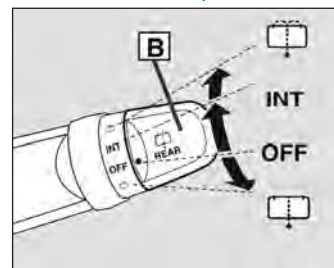
INT: Intermittent intervals can be adjusted by turning the knob **A**

AUTO: The wipers will be operated automatically by rain sensor (if equipped).

Slow

Fast

Rear Window Wiper and Washer

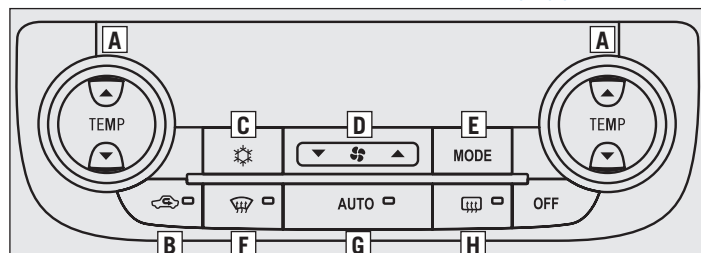


Turn the knob **B** to operate the rear window wiper.

The wiper operates continuously for several seconds then operates intermittently at intervals of about 8 seconds.

Washer fluid is sprayed, the wiper will automatically operate 2 or 3 times.

Dual-Zone Automatic Climate Controls (if equipped)



A - Push to select the desired temperature

B - Push to select outside air (Indicator light off) or recirculated air (Indicator light on)

C - Push for air conditioning ON/OFF

D - Push to select the blower speed

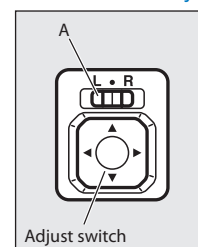
E - Push to select the position and amount of air flowing from the vents

F - Push to defog windshield.

G - When the AUTO switch is pressed, the settings are automatically controlled. Passenger's side temperature will be changed to the same temperature set as the driver's side

H - Push to defog the rear windows.

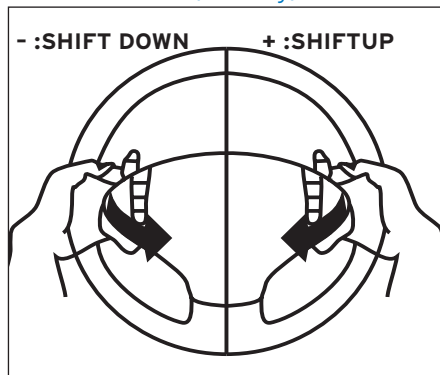
Side Mirror Adjustment



The outside rearview mirrors can be adjusted when the ignition switch is in the "ON" or "ACC" position or the operation mode is put in ON or ACC.

Move the lever (A) to the same side as the mirror you wish to adjust.

Paddle Shifters (GT only)



Simply upshift or downshift with a tap of your fingers – without moving your hands from the steering wheel.

You can return to the “D” operation by pulling the + (SHIFT UP) side paddle shifter rearwards (toward the driver) and holding for over **2 seconds**.

Drive Mode Selector (if equipped)



The drive mode can be switched by pressing the drive mode button while the ignition switch is in the ON position.

Pressing the button will change the drive mode in order to:

AWC ECO, NORMAL, SNOW, LOCK

Adaptive Cruise Control (if equipped)



A- CANCEL: To deactivate the ACC or cruise control

B- RES +: To increase the set speed or resume control after cancelling the ACC or cruise control function.

C- SET-: To set the desired speed and to reduce the set speed.

D- ON / OFF: To turn cruise control ON or OFF

E- ACC Distance Switch - Used to set or change the following distance between your vehicle and the vehicle in front of you.

To set a cruising speed

1. Press **D** and the “ACC” (if equipped) or “CRUISE” indicators will appear in the multi information display.
2. Accelerate or decelerate to your desired speed (above 25 mph). Press **C** and remove your foot from the accelerator pedal.

To accelerate or decelerate speed

Push up **B** to increase set cruising speed.

Push down **C** to decrease set cruising speed.

To cancel the cruising speed Press **A** or press brake pedal, or press **D**.

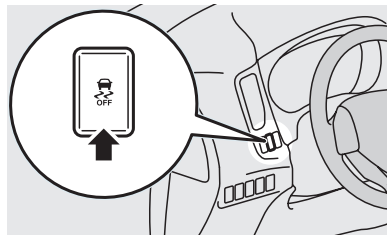
Seat Heater Switch



Position - Action

- (HI) - For quick heating
- (NEUTRAL) - Heater off
- (LO) - To keep the seat warm

Active Stability Control (ASC) Off Switch



You can deactivate the system by pressing down the “ASC OFF” switch for 3 seconds or longer.

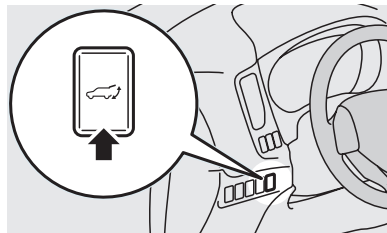
When the ASC is deactivated, the display/indicator will turn on. To reactivate the ASC, momentarily press the “ASC OFF” switch; the display/indicator is turned off.

Power Liftgate Main Switch (if equipped)



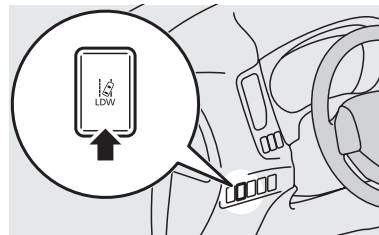
When the power liftgate main switch is ACTIVE, the power liftgate can be operated using either the power liftgate switch on the F.A.S.T.-key, the driver's side power liftgate switch or the open/close switches on the power liftgate.

Power Liftgate Switch (if equipped)



The power liftgate can be opened by pressing the Power Liftgate Switch.

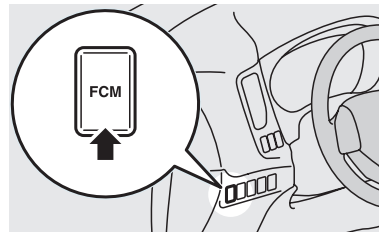
Lane Departure Warning (LDW) Switch (if equipped)



When you press the LDW switch, the “LDW” indicator on the information screen of the multi information display turns OFF and the LDW system is inactive.

Press the switch again, the system will activate.

Forward Collision Mitigation (FCM) Switch (if equipped)



Every time the operation mode is turned to “ON”, the FCM will automatically be turned on.

To turn off the FCM, press and hold the FCM switch. A buzzer will sound and the “FCM OFF” message and indicator will appear in the multi information display.

To change the warning distance mode, briefly press the FCM switch.

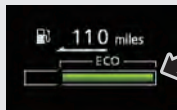
ECO indicator



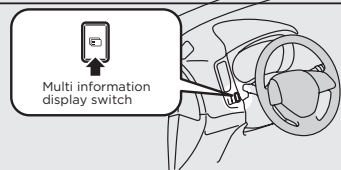
This indicator will be displayed when fuel efficient driving is achieved.

ECO Drive Assist

ECO drive level



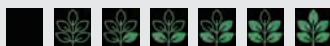
Low → High



This function displays how fuel-efficiently you are driving under different driving conditions. To show, press the multi information display switch.

ECO Score

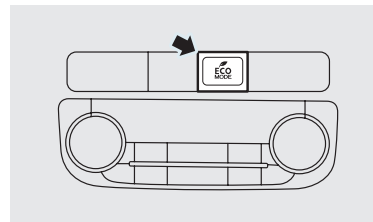
ECO drive level



Low → High

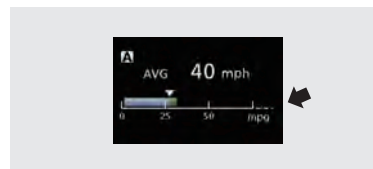
ECO score indicates the points you have scored on fuel-efficient driving by the number of leaves. To show, press the multi information display switch.

ECO mode switch



ECO mode is an eco-driving support system which automatically controls the engine, air conditioning system, 4WD system (if equipped) and S-AWC (if equipped) to improve fuel efficiency. To activate, press the ECO mode switch.

Momentary fuel consumption display



While driving, the momentary fuel consumption is shown with a bar graph. The "AVG" mark in the momentary fuel gauge shows the average fuel consumption.

When the momentary fuel consumption surpasses the average fuel consumption, the momentary fuel consumption is displayed with a green bar graph. Maintaining your fuel consumption above the average fuel consumption will help increase your mileage per gallon. To show, press the multi information display switch.

Tire Pressure Monitoring System (TPMS)



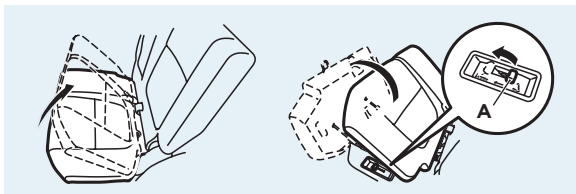
The Tire Pressure Monitoring System light illuminates when one or more of your tires is significantly under inflated. Please note that changes in the outside temperature may decrease tire pressure causing the TPMS light to turn on. If the TPMS light remains illuminated, check your tire pressure.

If the warning light illuminates, take the necessary measures referring to the owner's manual.

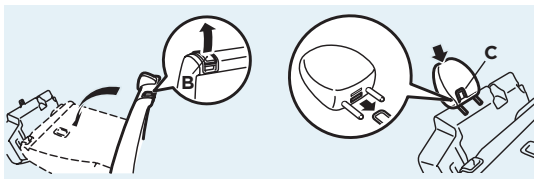
FOLDING AND STOWING THE SECOND AND THIRD ROW SEAT (if equipped)

Folding the second row seats

1. Slide the seat all the way to the rear by pulling up on the sliding lever located under the bottom of the seat and pushing to the back.
2. Pull up on the front edge of the bottom seat cushion and raise it up. Then lift the back side of the bottom seat cushion up and flip it over toward the front side as you rotate the bottom seat cushion into the foot well area.
3. Once the seat cushion is flipped forward, slide the lever (A) which is now visible, forward into the "seat flat" position to lock the seats down.



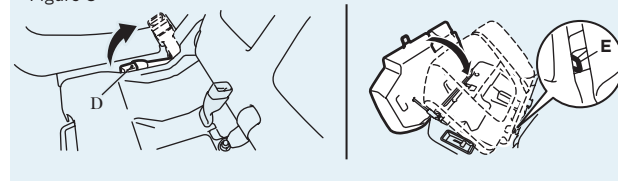
4. Remove the headrests by pushing the button on the headrest post and then lifting up on the headrest simultaneously. Place the headrest out of the way. (The middle headrest can remain in the lowest position).
5. Now pull the lever on the top of the backrest (B) and lower the seat forward so it lays flat.
6. Grab the headrest and face it forward. Find the slit on the bottom rear of the headrest and place it on the metal hook located on the middle part of the folded seat cushion (C). Place your other hand on the back of the headrest and gently push it down until you hear and or feel it lock into place.



Unfolding the second row seats

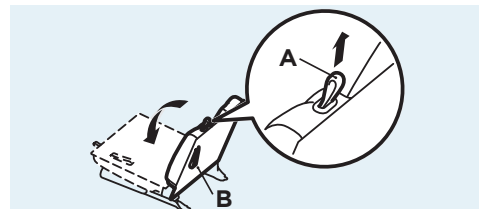
1. Remove Headrests from storage hook on folded seat cushion.
2. Raise the seatback until it locks into place.
3. Make sure the seat belt buckles are up (D) (Figure 3) and gently lift the seat cushion and fold it back into position making sure the hook (E) slides below the seatback bottom. Press down on the seat cushion to lock into place.
4. Replace headrests.

Figure 3

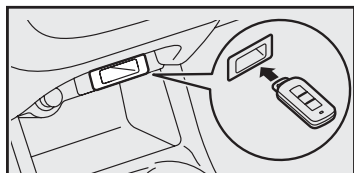
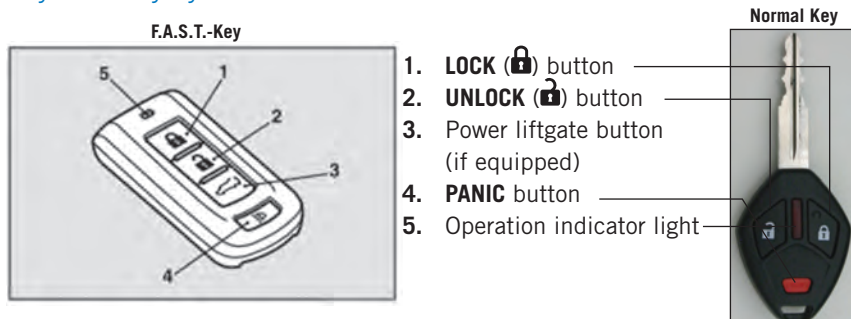


Folding the third row seat

1. Remove the head restraints.
2. Pull up the strap (A), then fold the seatback forward.
3. To return, pull the strap (B), then raise the seatback until it locks securely into place.



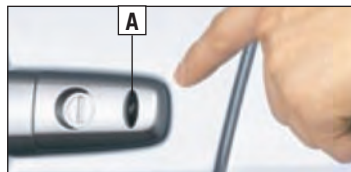
Keyless Entry System



If the F.A.S.T.-key is not operating properly

Insert the F.A.S.T.-key into the key slot in the instrument panel. Starting the engine and changing the operation mode should be now possible. Remove the F.A.S.T.-key from the key slot after starting the engine or changing the operation mode.

While carrying the F.A.S.T.-key, press the driver's or front passenger's door lock/unlock switch **A**.



Start/Stop Engine Switch (if equipped with F.A.S.T.-key)

While carrying the F.A.S.T.-key within the operating range, the Start/Stop button can be used to start the engine.

- Move the selector lever in "P" position and hold the brake pedal down, push the Start/Stop button.
- To stop the engine, stop the vehicle completely and move the selector lever in "P" then press the Start/Stop button.
- * **If you have to bring the engine to an emergency stop while driving, press and hold the Start/Stop button for 3 seconds or more, or press it quickly 3 times or more.**
- If you press the Start/Stop button without depressing the brake pedal, you can change the operation mode in the order of OFF, ACC, ON, OFF.
- If the engine cannot be started or the operation mode cannot be changed, check the position of the F.A.S.T.-key or the battery performance of the F.A.S.T.-key.

Multi Information Display Switch



Each time the multi information display switch is operated, the buzzer sounds and the multi information display changes between information such as warnings, trip odometer, average and momentary fuel consumption, distance range, etc.





To enter frequencies into the memory (AM/FM/SAT)

1. Press **A** to turn on the audio system.
2. Press **B** to select the desired band (AM/FM/SAT).
3. Press **C** to Seek Station
4. Hold down one of the Memory select buttons **D** (1-6) until it beeps in order to save that station to memory.

Audio Remote
Control Button
(if equipped)

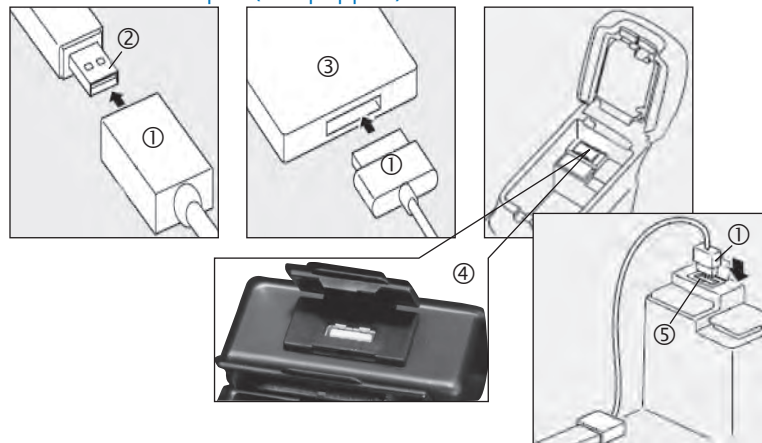
SEEK
Change
station or
track



MODE
Change the
audio source

NOTE: Please refer to your Owner's Manual for more detailed information on how to use your audio system.

USB and iPod Input (if equipped)



1. Park your vehicle in a safe place and turn the ignition switch to LOCK position.
2. Connect the cable ① (cable is not included with the vehicle) to the USB memory device ② or the Dock connector ① to the iPod ③.
3. Open the cover ④ in the floor console box. Connect the cable ① to the USB input terminal ⑤.
4. Turn the ignition switch to the "ACC" position. Turn on the audio system.
5. Press **E** several times to switch to the USB mode. The input mode changes as follows:
CD → USB → Bluetooth® (if equipped)
6. Depending on your USB device, it may take longer for playback to start.
7. Once the device is selected, playback starts.

With Display Audio System, follow steps 1 through 4 above

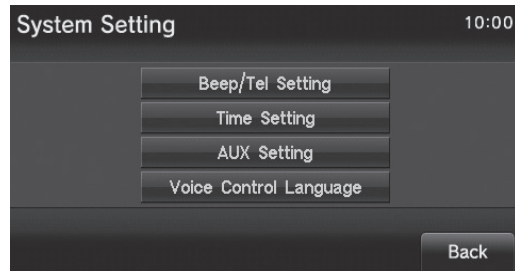
5. Press **MENU** on the touch screen.
6. Touch **USB**.
7. Touch **<Folder>** then select a track and begin playback.

System Settings

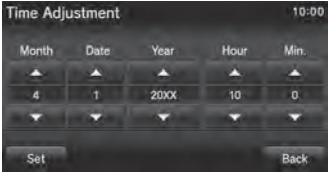



System related settings, such as the operation sound and the time, can be made.

1. Press the **MENU** key. The top menu is displayed.
2. Touch **Setting**, and then **System Setting**.

↓ The system setting screen is displayed.



This is a setting item displayed by touching **Time Setting**.

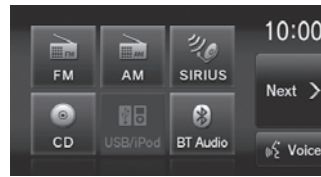
Settings name	Settings value	Settings content
Time Adjustment	Time	 <p>Touch the corresponding  or  and change the date and time.</p>
Time Display Settings	Date	 <p>The date and time display format can be set.</p>
	Time	12h or 24h display can be set.

Listening to the Radio

This explains how to listen to AM and FM radio broadcasts. HD Radio™ broadcast or analog broadcast can be received.

1. Press the **MENU** key. The top menu is displayed.
2. Touch **AM** or **FM**. The radio broadcast information screen is displayed.

↓



↑

3. Touch **TUNE** to tune in a station. The station at the selected frequency is played.

HD Radio® This HD Radio receiver enables:

PSD

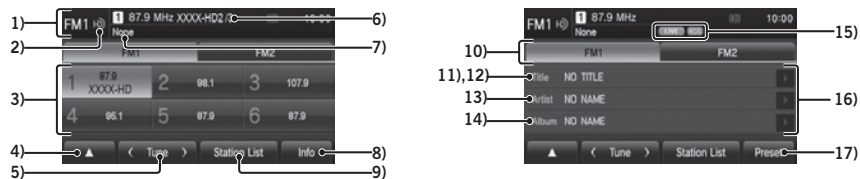
Program Service Data: Contributes to the superior user experience of HD Radio Technology. Presents song name, artist, station IDs, HD2/HD3 Channel Guide, and other relevant data streams.

HD2/HD3

Adjacent to traditional main stations are extra local FM channels. These HD2/HD3 Channels provide new, original music as well as deep cuts into traditional genre.

Digital Sound

Digital, CD-quality sound. HD Radio Technology enables local radio stations to broadcast a clean digital signal. AM sounds like today's FM and FM sounds like a CD.

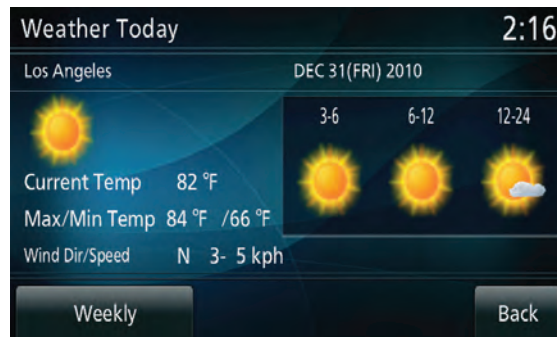
FM Radio Broadcast Information Screen (Display Audio System only)

- Source plate** - Displays the name of the currently selected source, preset channel number, reception frequency, and station name.
- HD Radio™ indicator** - Displayed during digital sound output.
- Preset switch** - Allows you to register your favorite broadcast stations. Touch and hold the switch for the desired preset channel number until you hear the “beep”. This registers the broadcast station currently being received.
**→ “Register Your Favorite Broadcast Stations”
- ▲** - Touching it displays the sub-menu. The **Scan, Radio Setting, Sound Control** settings can be made.
- <TUNE>** - Used to change the frequency. Touching and holding until you hear the “beep” starts automatic station selection (seek).
**→ “Starting the Seek”
- SSN** - Displays the SSN (Short Station Name) that is currently being received. If there is a sub-channel, the received channel number/total number of sub-channels is displayed.
- PTY** - Displays the PTY (Program Type) being received.
- Info** - Switches to information display.
- Station List** - Displays a list of the stations that can be received.
**→ “Search for Broadcast Stations from the Station List”
- FM1, FM2** - Allows you to register your favorite 6 stations for each band.
- Title** - Displays the acquired title name.
- Radio Text** - During analog reception, “Title” changes to “Radio Text”, and the acquired radio text is displayed. The “artist” and “album” are not displayed.
- Artist** - Displays the acquired artist name.
- Album** - Displays the acquired album name.
- Indicator - LIVE:** Live event broadcasts are displayed as they are received.
RBDS: RBDS data is displayed as it is received.
- Switch page** - If the title, artist name, and album title cannot fit in one page, the display can be switched to Page 2 and beyond.
- Preset** - Switches to preset display.

**See Display Audio Owner's Manual

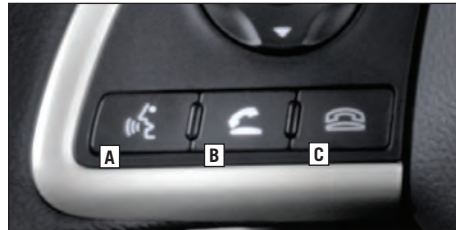
HD Weather and Fuel Prices (Navigation System only)

From the navigation screen press on the **Info** button
Then press on **HD Information**
Then press on **WEATHER** or **FUEL PRICE**

**HD Weather****HD Fuel Price**

Bluetooth® Controls

For a list of compatible Bluetooth® devices please go to <http://www.mitsubishicars.com/owners>

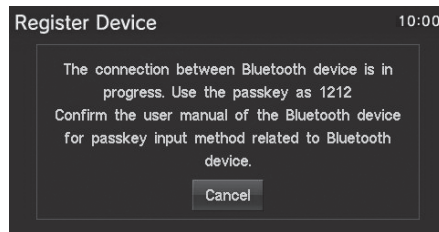


- A SPEECH button:**
Change to voice recognition
- B PICK-UP button:**
Answer an incoming call
- C HANG-UP button:**
End a call or voice recognition

Registering a Bluetooth® Device

Register a Bluetooth® device with this product.

1. Press the **MENU** key. The top menu is displayed.
2. Touch **Setting**, and then **Bluetooth® Setting**.
3. Touch **Register Device**.
4. Enter the pass key displayed on the screen into the Bluetooth® device.



When the connection is complete, a screen is displayed for selecting the Bluetooth® device. For details, refer to the user manual for the Bluetooth® device.

Calling by Entering a Telephone Number

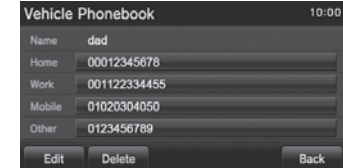
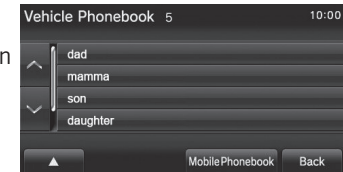
1. On the mobile phone screen, enter the telephone number.
2. Touch the **“OFF HOOK”** key.



← “OFF HOOK” key

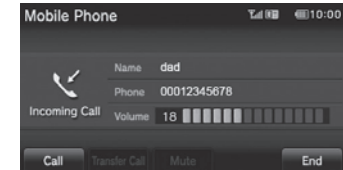
Making a Call from a Phonebook

1. Display the vehicle phonebook screen or the mobile phonebook screen.
** → “Display the Phonebook”
2. Select and touch the person to call.
3. Touch the telephone number to call.
4. Touch **Yes**.



Incoming Calls

The audio guide sounds and the incoming call screen is displayed.




**See Display Audio Owner's Manual

Search for a Location

Set Your Home as the Destination

You can set your pre-registered home as the destination.

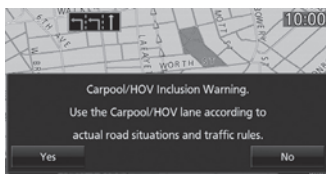
1. **Press the  key.**
This displays the destination menu.
2. **Touch Go Home.** This displays the guidance start screen.



3. **Touch Start.**



The search for the route with your home as the destination is complete and route guidance starts.



NOTE


- If a route using the HOV lane is in the search result with set conditions, a message confirms the use of the HOV lane is displayed.
Yes: Search for a HOV lane route.
No: Search for a non-HOV lane route.

Way Points – Once you have set a destination, you can enter additional stops along the way called Way Points. For details on how to set Way Points refer to your Navigation Owner's Manual.

Saving Addresses - To save an address, first enter the address into the system. Then touch **Address Book** and confirm location to be stored. Touch **Set to Address Book** to complete.

Search from Address

Searches for a location from an address.

1. **Press the  key.**
This displays the destination menu.
2. **Touch Address/Intersection.**
3. **Touch the item, then input the address.**



4. **Touch Set.**

This displays the guidance start screen.

ADVICE

- Touching **Last 5** allows you to select from among the last 5 searches.
- **All Intersections** can be selected when the street is input.
- Depending on the state of the information recorded in the map data, representative locations for that area may be displayed.

To Activate the Navigation Voice Command:

1. Push and hold the **SPEAK** button down on the steering wheel for a couple of seconds.
2. To activate the navigation voice command, touch the **SPEAK** button on the steering wheel and you will engage only that system.

Guidance Start Screen

This is the screen displayed when the location to set as the destination is decided.

This section explains the operations you can do on this screen.

1. Location information

When such location information as the “establishment name”, “street name”, “city name”, “country name”, “latitude”, “longitude”, or “telephone number” has been obtained, it is displayed.

2. Start

The search is executed and route guidance is started.

3. Dial

If a mobile phone is connected, you can call the establishment.

→ *“Call a Telephone Number Registered on the Map”*

Refer to the Navigation Owner’s Manual for further instructions.

4. Home

If your home is not registered, you can register the searched for location as your home.

5. Show Route

Sets the currently searched for location as the destination and shows a simple sketch of the route. You can check the route and change the search conditions.

→ *“Show Route”*

Refer to the Navigation Owner’s Manual for further instructions.

6. Itinerary List

You can change the destination, add waypoints, and change the route search conditions.

→ *“Set and Change a Waypoint”*

Refer to the Navigation Owner’s Manual for further instructions.

7. Address Book

Registers the search for location in the address book.

→ *“Set an Address in the Address Book”*

Refer to the Navigation Owner’s Manual for further instructions.

8. Adjust *

You can scroll the map and change the location.

* When the destination setting is set when scrolling the map, it is not displayed.



Q: Is my phone compatible with the factory Mitsubishi Bluetooth® Hands Free System?

A: Check the list of compatible phones, www.mitsubishicars.com/owners to see if the phone is Bluetooth® supported.

Q: Why doesn't my device (USB, iPhone, Bluetooth® Audio, etc.) work?

A: You need to press the Mode button to select the appropriate device you want to use.

Q: How do I use Bluetooth® Audio (if equipped)?

A: Please refer to your Owner's Manual for instructions.

Q: Why does my Anti-Lock Braking System (ABS) make a noise?

A: Each time your vehicle is started and driven a short distance, you will hear the sound of the ABS motor operating from the right front engine compartment. This is the normal sound the Anti-Lock Braking System makes when performing a self check.

Q: Why does the Audio System take so long to upload my music from my audio music device?

A: The Mitsubishi system can read multiple device structures in order to catalog the music files for easy playing and listening. Depending on the amount of music you have on your device, this may take a few minutes.

Q: What are the different ways of playing music from my portable music player through the stereo system in my vehicle, when equipped with the FUSE Hands-free Link System™?

A: There are three ways of playing music through your vehicle's sound system.

- USB port - The FUSE system will find the songs in your device and categorize them according to Artist, Album, and Genre. Then you can have the FUSE system find and play the song in your device that you prefer without physically searching your device. This is done via voice commands.
- Bluetooth® Streaming - Once your device is paired to the FUSE system, you can stream music from your device through the FUSE system to your vehicles sound system. No wires or cords. Your music stops and restarts at the same song when you exit and when you re-enter the vehicle. Voice commands are not available.

Q: Why can't I control the music track selection via voice commands while Bluetooth® streaming?

A: The Mitsubishi system uses AVRCP 1.3 (Audio/Video Remote Control Profile) which does support song information (title, artist, track, etc.). However, you must have a device that also supports AVRCP 1.3 to supply that information to the Mitsubishi system.

Q: My Outlander is equipped with "Micron Air Filtration". Where is the filter located and does it need servicing?

A: The micron air filter is a small filter element which is located in the HVAC box just behind the lower glove box. The filter should be inspected frequently for debris. The filter works well at filtering incoming air however the filter will clog and lead to reduced outlet air volume if not serviced on a regular basis.

Q: I am having trouble with my Power Liftgate working properly. Sometimes it works and sometimes it doesn't. Am I doing something wrong?

A: First check the **ACTIVE/OFF** button located below the climate control unit and check to see that this button is set to **ACTIVE**. If so, then you will find that the system needs to have ALL the doors unlocked for the unit to work properly. If only the driver's door is unlocked, the power liftgate button will not work.

Q: My Outlander has two 12V accessory outlets. What devices can be plugged into these outlets?

A: Both of these outlets are protected with 15 amp fuses. Always check the current draw rating of any device prior to use in the vehicle. If the device is rated above 12 amps, this could lead to circuit overload and the electrical fuse opening (no current flow).

Q: How can I get the MPG stated on the window sticker?

A: Vehicle driving styles will greatly affect MPG. Avoid sudden abrupt starts from a stop and let the vehicle coast to the traffic light. Both of these styles will increase mileage and reduce brake lining wear.

- Vehicles are designed to achieve the best fuel mileage when they are driven at the speed limits on the freeway. Avoid driving over 65 mph.
- Under inflated tires will increase rolling resistance and will reduce fuel mileage. Check tire pressure frequently to increase miles per gallon. Proper tire pressure also ensures optimum tire performance (including tire wear.)

Q: How does the Navigation System choose a certain route?

A: The system takes into account traffic conditions, road types, distance and road width to recommend the route.

Q: Why do my Rain Sensing Windshield Wipers operate on their own when it's not raining?

A:

- When the lever is in the AUTO position, the rain sensor detects rain or snow and automatically turns on the wipers.
- The wipers may automatically operate when things such as insects or foreign objects are affixed to the windshield on top of the rain sensor or when the windshield is frosted over.
- To stop the wipers, place the lever in the OFF position.

Q: Why does my check engine light come on after I put gas in my car?

A: There are many reasons why your check engine light may illuminate. Before calling your dealership, make sure the fuel cap is fully engaged and you have heard three clicks when tightening it. After checking and hearing three clicks and the light is still on, contact your dealership.

Q: How do I use the emergency key when the F.A.S.T.-key battery or vehicle battery is run down?

A: If your Outlander is equipped with a One Touch Start button and the door does not open, take the key out from the fob and unlock the door manually. Put the key back into the fob and insert it into the slot provided below the Climate Control Switches. Starting the engine and charging the operation mode should now be possible. Remove the F.A.S.T.-key from the key slot after starting the engine or charging the operation mode.



2014 OUTLANDER

www.mitsubishicars.com

ACAD-P08000 (4/13)