



**2014 LANCER EVOLUTION**

**Owner's Handbook**



PLEASE PLACE COPIES OF THE FOLLOWING ITEMS IN THE POCKET BELOW:

1. Pre-Delivery Inspection Form (Customer Copy)
2. Triple Diamond Delivery Checklist (Customer Copy)
3. Salesperson or Key Dealership Contact's Business Card



Thank you for buying a Mitsubishi Lancer Evolution. There's no doubt you've already realized how well your car drives on the open road. What you may not know is all the great features that help your car perform the way it does. In the pages ahead we're going to run through the basics and prepare you for the road.

We'd also love to hear from you about your overall Mitsubishi experience. If you haven't already, please log on to [www.MitsubishiSSIsurvey.com](http://www.MitsubishiSSIsurvey.com) and tell us how we did. This will help us make sure your next visit is that much better.

We hope you will visit the Mitsubishi Owner's site where we store the latest Mitsubishi news and special offers. Here you can also keep track of your car's warranty and servicing needs, get Roadside Assistance Information and tap into other owner-centric details. Just log on to [www.Mitsubishicars.com/ownersonly](http://www.Mitsubishicars.com/ownersonly).

## Table of Contents

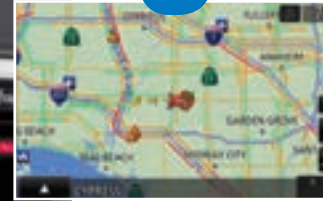
Driver's View .....	Page 2-3
Controls .....	Page 4
Own the Road .....	Page 5
Technology .....	Page 6
Audio System .....	Page 7-9
HD Weather and Fuel (Navigation only) .....	Page 9
Navigation System (if equipped) .....	Page 10
Bluetooth® .....	Page 11
FAQ's .....	Page 12-13



## Driver's View

- 1** Side Mirror Adjustment..... Page 2
- 2** Headlights and Fog Lights..... Page 4
- 3** Air Conditioning ..... Page 4
- 4** Windshield Wiper Lever..... Page 4
- 5** Cruise Control ..... Page 5
- 6** Paddle Shifters (if equipped)..... Page 5
- 7** Audio Remote Control Switch  
(if equipped) ..... Page 7
- 8** USB Port (if equipped)..... Page 7
- 9** Audio System (if equipped) ..... Page 8
- 10** Navigation System  
(if equipped)..... Page 10
- 11** Bluetooth® Controls..... Page 11





(Inside glove box)





## CONTROLS

### Automatic Air Conditioning

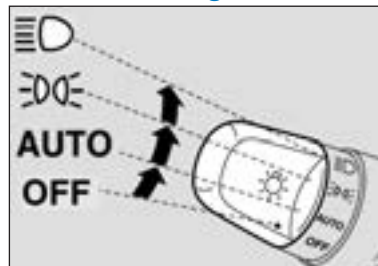


- A** - Turn for Temperature control
- B** - Push to select outside air (Indicator light off) or recirculated air (Indicator light on)
- C** - Turn to select the blower speed. To the right increases blower speed. To the left decreases blower speed. Turned all the way to the left turns the blower off.  
Note: OFF is located above AUTO.
- D** - Push for air conditioning ON/OFF (Indicator light on/Indicator light off).
- E** - Turn to select the air flow and direction mode (AUTO position is only auto type air conditioning).
- F** - Push to defog the rear window (Indicator light on). Rear window defogger light automatically turns off after 20 minutes.

#### To defog front windshield

1. Set the Mode Dial **E** to defrost position.
2. Set the blower speed **C** to the maximum position.
3. Set the temperature **A** to highest position.

### Automatic Headlights



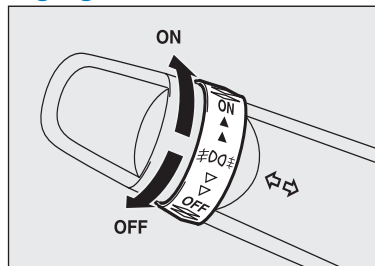
Headlights and other lights on.

Parking, tail, front and rear sidemarker lights, license plate and instrument panel lights on.

**AUTO** Headlights and other lights turn on and off automatically in accordance with outside light level.

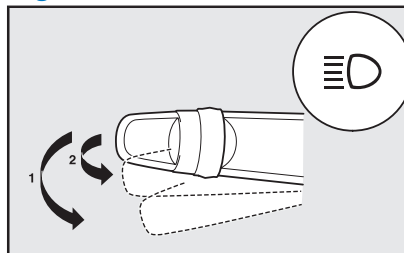
**OFF** All lights off

### Fog Lights



Fog Lights will illuminate only when headlights are on low beam. Turning the knob in the direction of the ON position turns on the fog lights. Turning the knob in the direction of the OFF position turns off the fog lights. The knob will return to the neutral position when released.

### High/Low Beam Switch

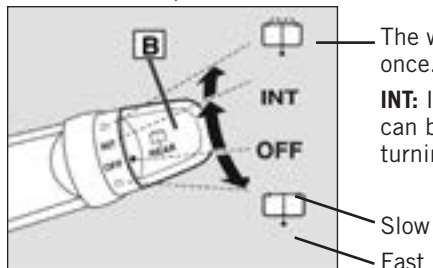


To change the headlights from high beam to low beam and vice versa, pull the turn signal lever fully towards you (1). An illuminated blue light in the instrument cluster indicates when the headlights are on high beam.

- Headlight flasher

You can flash the high beams by pulling the lever gently towards you (2).

### Windshield Wipers

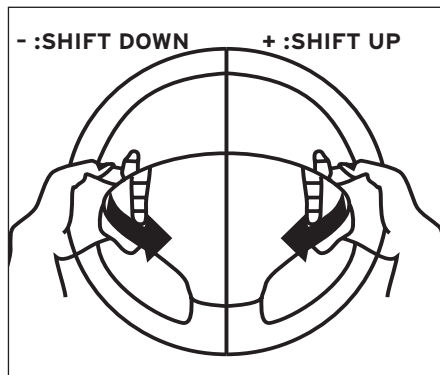


The wipers will operate once.

**INT:** Intermittent intervals can be adjusted by turning the knob **A**

Slow  
Fast

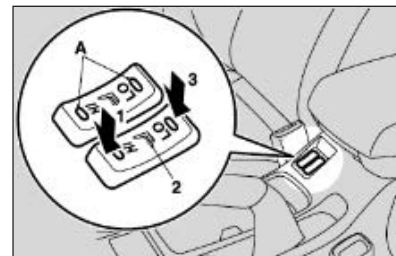
## Paddle Shifters (if equipped)



Simply upshift or downshift with a tap of your fingers, without moving your hands from the steering wheel.

You can return to the automatic shifting mode by pulling the + (SHIFT UP) side paddle shifter towards you and holding for over **2 seconds**.

## Seat Heater Switch



### Position - Action

(HI) - For quick heating

(LO) - To keep the seat warm

## Cruise Control



**A- CANCEL:** To deactivate the cruise control

**B- ACC RES:** To increase the set speed or resume previously set cruise control operation.

**C- COAST SET:** To set the desired speed and to reduce the set speed

**D- ON/OFF:** To turn ON/OFF cruise control

### To set a cruising speed

1. Press **D** and the **CRUISE** indicator light in the meter cluster will be turned on.
2. Accelerate or decelerate to your desired speed (above 25 mph). Press **C** and remove your foot from the accelerator pedal.

### To accelerate or decelerate speed

Press **B** to increase set cruising speed.

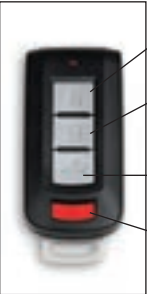
Press **C** to decrease set cruising speed.

### To cancel the cruising speed

Press **A** or press brake pedal, or press **D**.

### Keyless Entry System

**[F.A.S.T.-Key]**




**LOCK**  
Press: Once – Lock all doors

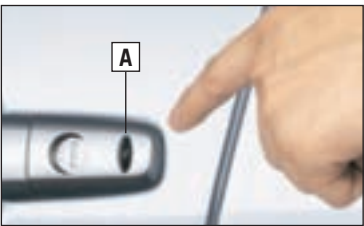
**UNLOCK**  
Press: Once – Unlock driver door  
Twice – Unlock all doors

**TRUNK**  
Press twice to open trunk lid.

**PANIC**  
Press and hold. Press any button to turn off panic.

**[Normal Key]**





To lock or unlock the doors while carrying the F.A.S.T.-key, press the driver's or front passenger's door lock/unlock switch **A**.

### Tire Pressure Monitoring System (TPMS)

The Tire Pressure Monitoring System light illuminates when one or more of your tires is significantly underinflated. Please note that changes in the outside temperature may decrease tire pressure causing the TPMS light to turn on. If the TPMS light remains illuminated, check your tire pressure.

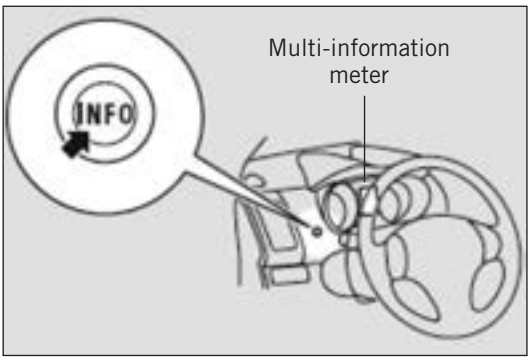


Warning light illuminates when tire pressure is too low.



If warning light illuminates, contact your local Mitsubishi dealer. (May be a TPMS system issue or malfunction.)

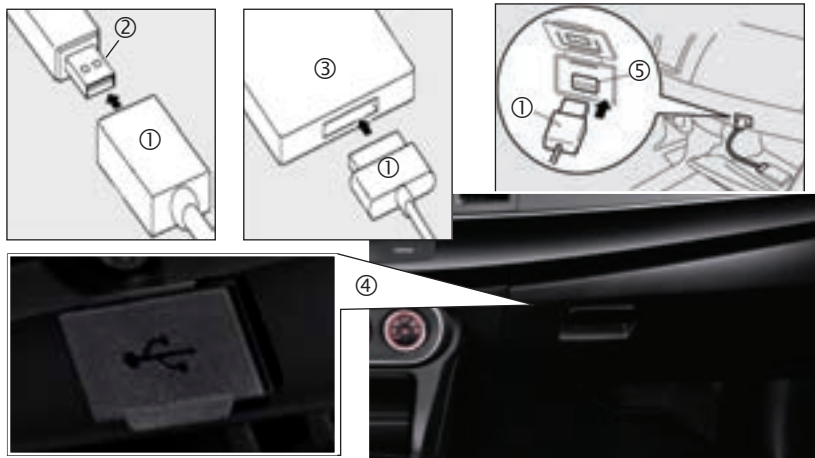
### Multi-information Meter Switch (INFO Button)



Change display information by pushing the INFO button: Warnings, Odometer/Tripmeter, Service Reminder, Engine Coolant Temperature, Average and Momentary Fuel Consumption, Driving Range and Average Speed, etc.

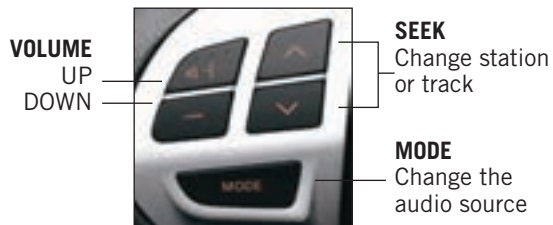


## USB and iPod Input (if equipped)



1. Park your vehicle in a safe place and turn the ignition to the LOCK position.
2. Connect the cable ① (cable is not included with the vehicle) to the USB memory device ② or the Dock connector ① to the iPod ③.
3. Open the glove box ④ and connect the cable ① to the USB input terminal ⑤.
4. Turn the ignition switch to the "ACC" position. Turn on the audio system.
5. Press **MENU** on the touch screen.
6. Touch **USB**.
7. Touch **<Folder>** then select a track and begin playback.

## Audio Remote Control Switch (if equipped)

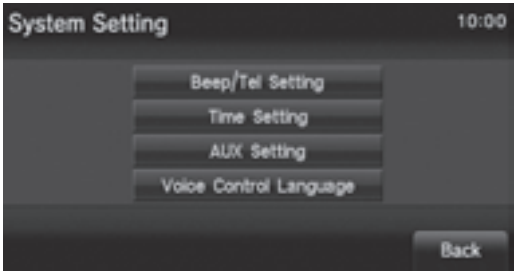


System Settings

System related settings, such as the operation sound and the time, can be made.

1. Press the **MENU** key. The top menu is displayed.
2. Touch **Setting**, and then **System Setting**.

↓ The system setting screen is displayed.



This is a setting item displayed by touching **Time Setting**.

Settings name	Settings value	Settings content
Time Adjustment	Time	<div></div> <div>Touch the corresponding <input type="button" value="▲"/> or <input type="button" value="▼"/></div>
Time Display Settings	Date	<div></div> <div>The date and time display format can be set.</div>
	Time	12h or 24h display can be set.

Listening to the Radio

This explains how to listen to AM and FM radio broadcasts. HD Radio™ broadcast or analog broadcast can be received.

1. Press the **MENU** key. The top menu is displayed.
2. Touch **AM** or **FM**. The radio broadcast information screen is displayed.

↓



3. Touch **TUNE** to tune in a station. The station at the selected frequency is played.

HD Radio®

This HD Radio receiver enables:

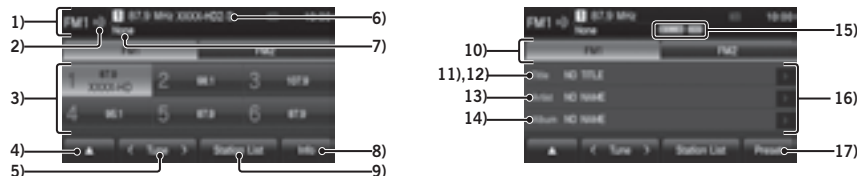
- PSD

Program Service Data: Contributes to the superior user experience of HD Radio Technology. Presents song name, artist, station IDs, HD2/HD3 Channel Guide, and other relevant data streams.
- HD2/HD3

Adjacent to traditional main stations are extra local FM channels. These HD2/HD3 Channels provide new, original music as well as deep cuts into traditional genre.
- Digital Sound

Digital, CD-quality sound. HD Radio Technology enables local radio stations to broadcast a clean digital signal. AM sounds like today's FM and FM sounds like a CD.

## FM Radio Broadcast Information Screen (Audio System only)

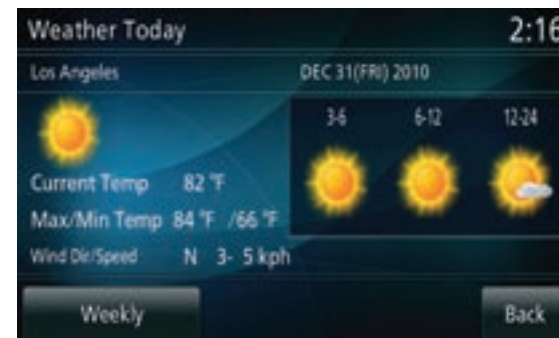


1. **Source plate** - Displays the name of the currently selected source, preset channel number, reception frequency, and station name.
2. **HD Radio™ indicator** - Displayed during digital sound output.
3. **Preset switch** - Allows you to register your favorite broadcast stations. Touch and hold the switch for the desired preset channel number until you hear the “beep”. This registers the broadcast station currently being received.  
\*\*→ “Register Your Favorite Broadcast Stations”
4. **▲** - Touching it displays the sub-menu. The **Scan**, **Radio Setting**, **Sound Control** settings can be made.
5. **<TUNE>** - Used to change the frequency. Touching and holding until you hear the “beep” starts automatic station selection (seek).  
\*\*→ “Starting the Seek”
6. **SSN** - Displays the SSN (Short Station Name) that is currently being received. If there is a sub-channel, “the received channel number/total number of sub-channels” is displayed.
7. **PTY** - Displays the PTY (Program Type) being received.
8. **Info** - Switches to information display.
9. **Station List** - Displays a list of the stations that can be received.  
\*\*→ “Search for Broadcast Stations from the Station List”
10. **FM1, FM2** - Allows you to register your favorite 6 stations for each band.
11. **Title** - Displays the acquired title name.
12. **Radio Text** - During analog reception, “Title” changes to “Radio Text”, and the acquired radio text is displayed. The “artist” and “album” are not displayed.
13. **Artist** - Displays the acquired artist name.
14. **Album** - Displays the acquired album name.
15. **Indicator - LIVE**: Live event broadcasts are displayed as they are received.  
**RBDS**: RBDS data is displayed as it is received.
16. **Switch page** - If the title, artist name, and album title cannot fit in one page, the display can be switched to Page 2 and beyond.
17. **Preset** - Switches to preset display.

\*\*See Audio Owner's Manual

## HD Weather and Fuel Prices (Navigation System only)

From the navigation screen press on the **Info** button  
Then press on **HD Information**  
Then press on **WEATHER** or **FUEL PRICE**



HD Weather



HD Fuel Price

## Search for a Location

### Set Your Home as the Destination

You can set your pre-registered home as the destination.

1. Press the **HOME** key.  
This displays the destination menu.
2. Touch **Go Home**. This displays the guidance start screen.



3. Touch **Start**.



The search for the route with your home as the destination is complete and route guidance starts.



#### NOTE

- If a route using the HOV lane is in the search result with set conditions, a message confirms the use of the HOV lane is displayed.  
**Yes:** Search for a HOV lane route.  
**No:** Search for a non-HOV lane route.

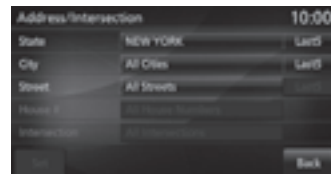
**Way Points** – Once you have set a destination, you can enter additional stops along the way called Way Points. For details on how to set Way Points refer to your Navigation Owner's Manual.

**Saving Addresses** - To save an address, first enter the address into the system. Then touch **Address Book** and confirm location to be stored. Touch **Set to Address Book** to complete.

### Search from Address

Searches for a location from an address.

1. Press the **HOME** key.  
This displays the destination menu.
2. Touch **Address/Intersection**.
3. Touch the item, then input the address.



4. Touch **Set**.

This displays the guidance start screen.

#### ADVICE

- Touching **Last 5** allows you to select from among the last 5 searches.
- **All Intersections** can be selected when the street is input.
- Depending on the state of the information recorded in the map data, representative locations for that area may be displayed.

#### To Activate the Navigation Voice Command:

1. Push and hold the **SPEAK** button down on the steering wheel for a couple of seconds.
2. To activate the navigation voice command, touch the **SPEAK** button on the steering wheel and you will engage only that system.

## Bluetooth® Controls

For a list of compatible Bluetooth® devices please go to <http://www.mitsubishicars.com/owners>



- A SPEECH button:**  
Change to voice recognition
- B PICK-UP button:**  
Answer an incoming call
- C HANG-UP button:**  
End a call or voice recognition

## Registering a Bluetooth® Device

Register a Bluetooth® device with this product.

1. Press the **MENU** key. The top menu is displayed.
2. Touch **Setting**, and then **Bluetooth® Setting**.
3. Touch **Register Device**.
4. Enter the pass key displayed on the screen into the Bluetooth® device.



When the connection is complete, a screen is displayed for selecting the Bluetooth® device. For details, refer to the user manual for the Bluetooth® device.

## Calling by Entering a Telephone Number

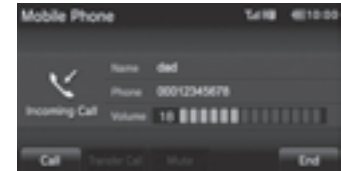
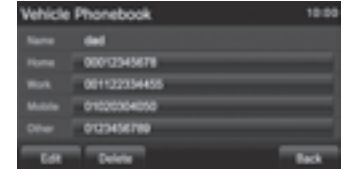
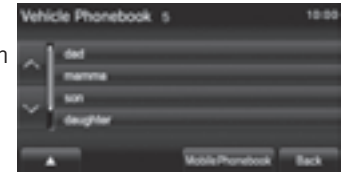
1. On the mobile phone screen, enter the telephone number.
2. Touch the **“OFF HOOK”** key.



← “OFF HOOK” key

## Making a Call from a Phonebook

1. Display the vehicle phonebook screen or the mobile phonebook screen.  
\*\*→ “Display the Phonebook”
2. Select and touch the person to call.
3. Touch the telephone number to call.
4. Touch **Yes**.



\*\*See Audio Owner's Manual



**Q: What should I do when my engine is hard to start?**

A: Pressing on the accelerator pedal about half way down while cranking the engine may make it easier to start. When the engine starts, release your foot from the accelerator pedal.

**Q: Is my phone compatible with the factory Mitsubishi Bluetooth® Hands Free System?**

A: Check the phone approval list, [www.mitsubishicars.com/owners](http://www.mitsubishicars.com/owners) to see if the phone is Bluetooth® approved.

**Q: Why doesn't my device (USB, iPhone, Bluetooth® Audio, etc.) work?**

A: You need to press the Mode button to select the appropriate device you want to use.

**Q: How do I use Bluetooth® Audio (if equipped)?**

A: Please refer to your Owner's Manual for further instructions.

**Q: How do I transfer calls from Bluetooth® back to my mobile phone's handset?**

A: While on the call, press the speech button on your steering wheel and, once prompted, say "Transfer Call."

**Q: Why does the Audio System take so long to upload my music from my audio music device?**

A: The Mitsubishi system can read multiple device structures in order to catalog the music files for easy playing and listening. Depending on the amount of music you have on your device, this may take a few minutes.

**Q: What are the different ways of playing music from my portable music player through the stereo system in my vehicle, when equipped with the FUSE Hands-free Link System™?**

A: There are three ways of playing music through your vehicle's sound system.

- USB port - The FUSE system will find the songs in your device and categorize them according to Artist, Album, and Genre. Then you can have the FUSE system find and play the song in your device that you prefer without physically searching your device. This is done via voice commands. Note: In this mode the storage device will also be charged.
- Bluetooth® Streaming - Once your device is paired to the FUSE system, you can stream music from your device through the FUSE system to your vehicle's sound system. No wires or cords. Your music stops and restarts at the same song when you exit and when you re-enter the vehicle. Voice commands are not available.

**Q: Why can't I control the music track selection via voice commands while Bluetooth® streaming?**

A: The Mitsubishi system uses AVRCP 1.3 (Audio/Video Remote Control Profile) which does support song information (title, artist, track, etc.). However, you must have a device that also supports AVRCP 1.3 to supply that information to the Mitsubishi system.

**Q: My Lancer Evolution is equipped with "Micron Air Filtration". Where is the filter located and does it need servicing?**

A: The micron air filter is a small filter element which is located in the HVAC box just behind the glove box. The filter should be inspected frequently for debris. The filter works well at filtering incoming air however the filter will clog and lead to reduced outlet air volume if not serviced on a regular basis.

**Q: My Lancer Evolution has one 12V accessory outlet. What devices can be plugged into this outlet?**

A: This outlet is protected with 15 amp fuses. Always check the current draw rating of any device prior to use in the vehicle. If the device is rated above 12 amps, this could lead to circuit overload and the electrical fuse opening (no current flow).

**Q: I only have one remote for the remote start system on my Lancer Evolution. Can I get a second one?**

A: No. Only one remote can be programmed per vehicle for security reasons.

**Q: How can I get the MPG stated on the window sticker?**

A: Vehicle driving styles will greatly affect MPG. Avoid sudden abrupt starts from a stop and let the vehicle coast to the traffic light. Both of these styles will increase mileage and reduce brake lining wear.

- Vehicles are designed to achieve the best fuel mileage when they are driven at the speed limits on the freeway. Avoid driving over 65 mph.
- Under inflated tires will increase rolling resistance and will reduce fuel mileage. Check tire pressure frequently to increase miles per gallon. Proper tire pressure also ensures optimum tire performance (including tire wear.)

**Q: How does the Navigation System choose a certain route?**

A: The system takes into account traffic conditions, road types, distance and road width to recommend the route.

**Q: Why does my Anti-Lock Braking System (ABS) make a noise?**

A: Each time your vehicle is started and driven a short distance, you will hear the sound of the ABS motor operating from the right front engine compartment. This is the normal sound the Anti-Lock Braking System makes when performing a self check.

**Q: Why do my Rain Sensing Windshield Wipers operate on their own when it's not raining?**

- A:
- When the lever is in the AUTO position, the rain sensor detects rain or snow and automatically turns on the wipers.
  - The wipers may automatically operate when things such as insects or foreign objects are affixed to the windshield on top of the rain sensor or when the windshield is frosted over.
  - To stop the wipers, place the lever in the OFF position.

**Q: Why does my check engine light come on after I put gas in my car?**

A: There are many reasons why your check engine light may illuminate. Before calling your dealership, make sure the fuel cap is fully engaged and you have heard three clicks when tightening it. After checking and hearing three clicks and driving for a while, if the light is still on, contact your dealership.

**Q: How do I use the emergency key when the F.A.S.T.-key battery or vehicle battery is run down?**

A: Remove the emergency key from the F.A.S.T.-key fob and manually unlock the door. Once inside the vehicle remove the ignition switch cover by pressing the release buttons on the top and bottom of the ignition switch cover. Once the ignition switch cover is removed insert the emergency key into the ignition switch then re-insert (backwards) the F.A.S.T.-key fob onto the emergency key. Once the F.A.S.T.-key fob is re-inserted (backwards) turn the emergency key to start the engine.



2014 LANCER EVOLUTION

[www.mitsubishicars.com](http://www.mitsubishicars.com)

(5/13)