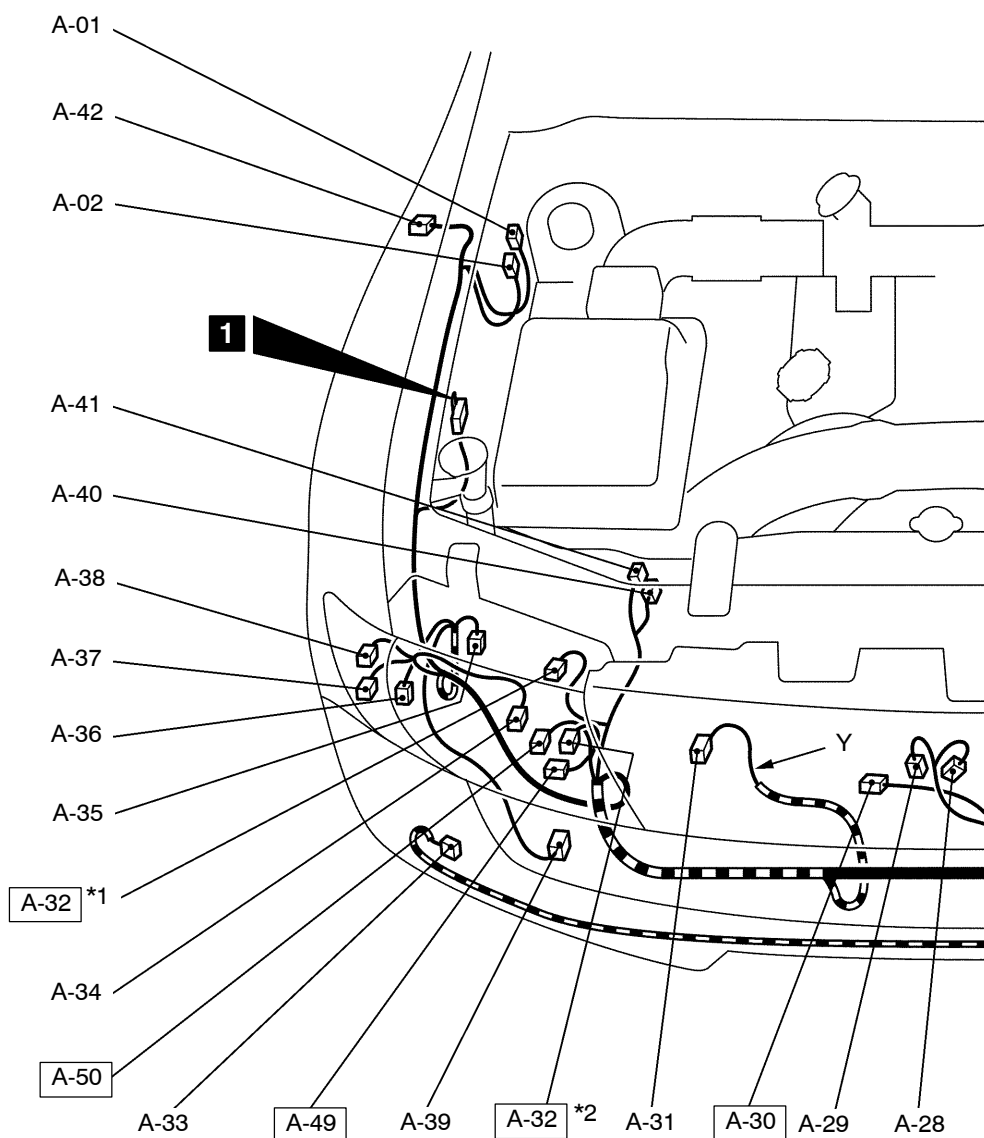


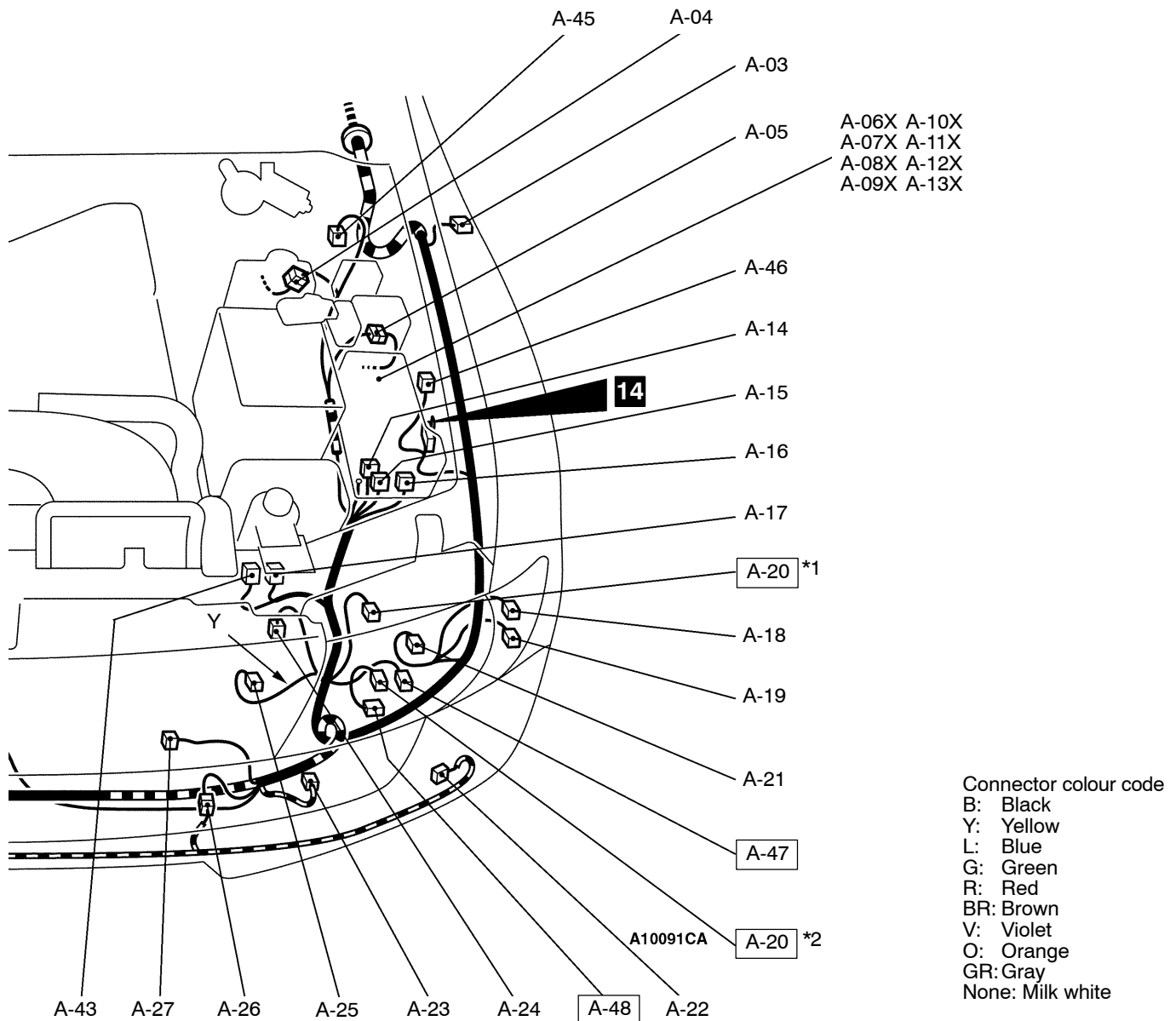
ENGINE COMPARTMENT

L.H. drive vehicles

Main
IndexGroup
TOCConnector
symbol**A**

A-01 (2-B)	Motor antenna
A-02 (3-B)	Motor antenna
A-03 (2-GR)	Side turn signal lamp (LH)
A-04 (12-B)	Front wiring harness and control wiring harness combination
A-05 (8-B)	Front wiring harness and control wiring harness combination
A-06X (5)	Horn relay <Except for Taiwan>
A-07X (11)	Front-ECU
A-08X (11)	Front-ECU
A-09X (5)	Front fog lamp relay
A-10X (5)	Condenser fan relay (HI)
A-11X (5)	Condenser fan relay (LO)
	<Except for Taiwan> or horn relay
	<Vehicles for Taiwan>

A-12X (5)	Theft-alarm horn relay
	<Vehicles for Taiwan>
A-13X (5)	A/C compressor relay
A-14 (6)	J/C (1)
A-15 (14)	J/C (2)
A-16 (14-GR)	J/C (3)
A-17 (5)	PTC heater relay 1 <4M41>
A-18 (2-GR)	Position lamp (LH)
A-19 (2-B)	Front turn signal lamp (LH)
A-20 (3-GR)	Headlamp leveling unit (LH)
A-21 (3-B)	Headlamp (LH)
	<Without discharge type>
A-22 (2-B)	Front fog lamp (LH)
A-23 (2-B)	Wheel speed sensor (Front: LH) <ABS>
A-24 (2-BR)	Dual pressure switch <A/C>
A-25 (2-Y)	Front impact sensor (LH)



- A-26 (4-B) Front wiring harness and front fog lamp wiring harness combination
- A-27 (2-B) Condenser fan motor
- A-28 (1-B) Horn (HI)
- A-29 (1-B) Horn (LO)
- A-30 (2-B) Ambient temperature sensor
- A-31 (2-Y) Front impact sensor (RH)
- A-32 (3-GR) Headlamp leveling unit (RH)
- A-33 (2-B) Front fog lamp (RH)
- A-34 (3-B) Headlamp (RH)
- A-35 (2-B) Windshield washer motor
- A-36 (4-B) Headlamp washer motor
- A-37 (2-B) Front turn signal lamp (RH)
- A-38 (2-GR) Position lamp (RH)
- A-39 (2-B) Wheel speed sensor (Front: RH) <ABS>
- A-40 (2-B) Solenoid valve A

- A-41 (2-BR) Solenoid valve B
- A-42 (2-GR) Side turn signal lamp (RH)
- A-43 (5) PTC heater relay 2 <4M41>
- A-45 (1-B) Theft-alarm horn <Vehicles for Taiwan>
- A-46 (2-B) Hood switch <Vehicles for Taiwan>
- A-47 (2-GR) High-beam actuator (LH)
- A-48 (2-GR) Headlamp (LH) <With discharge type>
- A-49 (2-GR) Headlamp (RH) <With discharge type>
- A-50 (2-GR) High-beam actuator (RH)
- <With discharge type>

NOTE

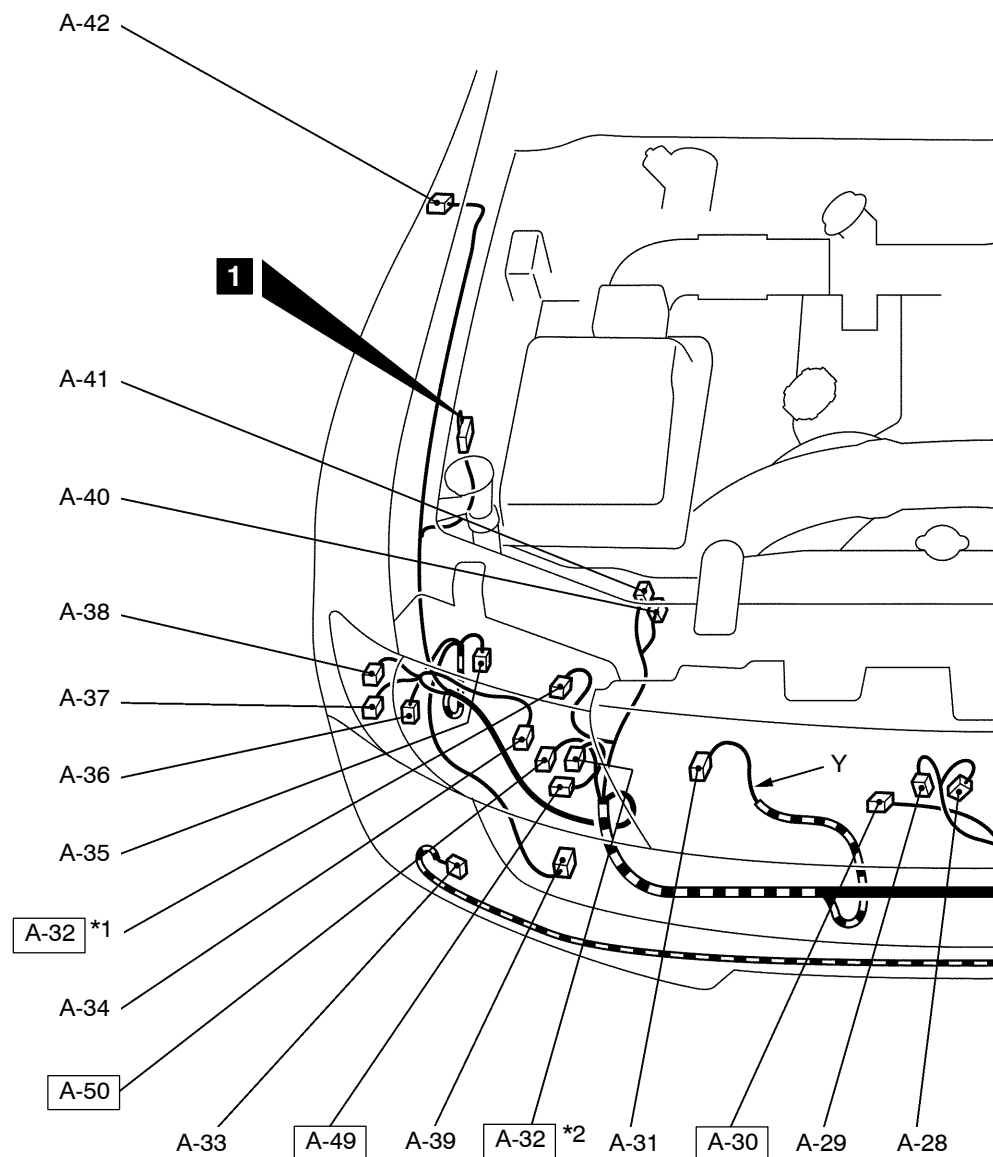
Connector numbers enclosed by a frame are newly added or changed.

*1: Without discharge type headlamp

*2: With discharge type headlamp

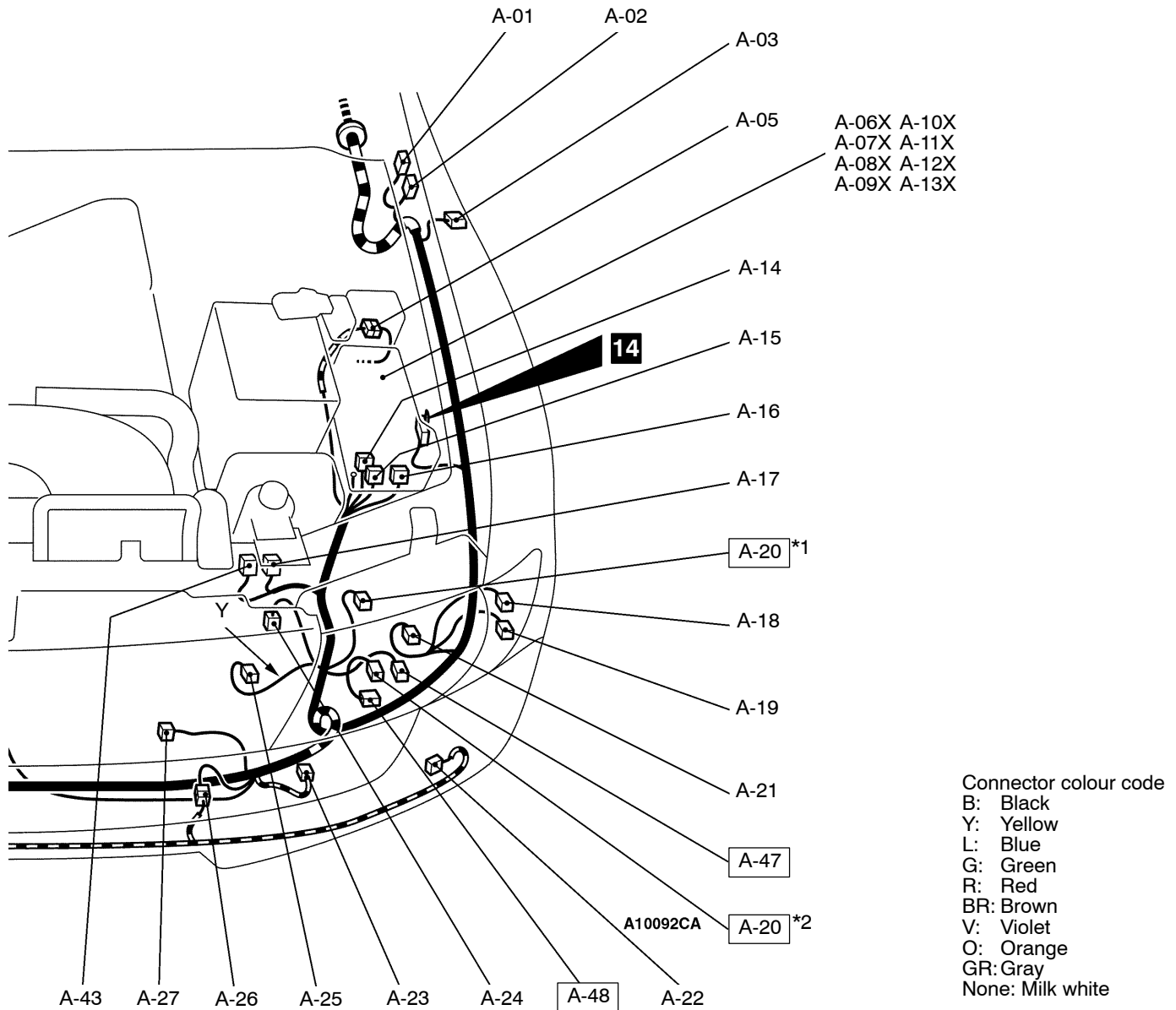
ENGINE COMPARTMENT

R.H. drive vehicles

Main
IndexGroup
TOCConnector
symbol**A**

A-01 (2)	Motor antenna
A-02 (3-B)	Motor antenna
A-03 (2-GR)	Side turn signal lamp (LH)
A-05 (8-B)	Front wiring harness and control wiring harness combination
A-06X (5)	Horn relay
A-07X (11)	Front-ECU
A-08X (11)	Front-ECU
A-09X (5)	Front fog lamp relay
A-10X (5)	Condenser fan relay (HI)
A-11X (5)	Condenser fan relay (LO)
A-12X (5)	Wiper deicer relay
A-13X (5)	A/C compressor relay
A-14 (6)	J/C (1)
A-15 (14)	J/C (2)

A-16 (14-GR)	J/C (3)
A-17 (5)	PTC heater relay 1 <4M41>
A-18 (2-GR)	Position lamp (LH)
A-19 (2-B)	Front turn signal lamp (LH)
A-20 (3-GR)	Headlamp leveling unit (LH)
A-21 (3-B)	Headlamp (LH)
	<Without discharge type>
A-22 (2-B)	Front fog lamp (LH)
A-23 (2-B)	Wheel speed sensor (Front: LH) <ABS>
A-24 (2-BR)	Dual pressure switch <A/C>
A-25 (2-Y)	Front impact sensor (LH)
A-26 (4-B)	Front wiring harness and front fog lamp wiring harness combination
A-27 (2-B)	Condenser fan motor

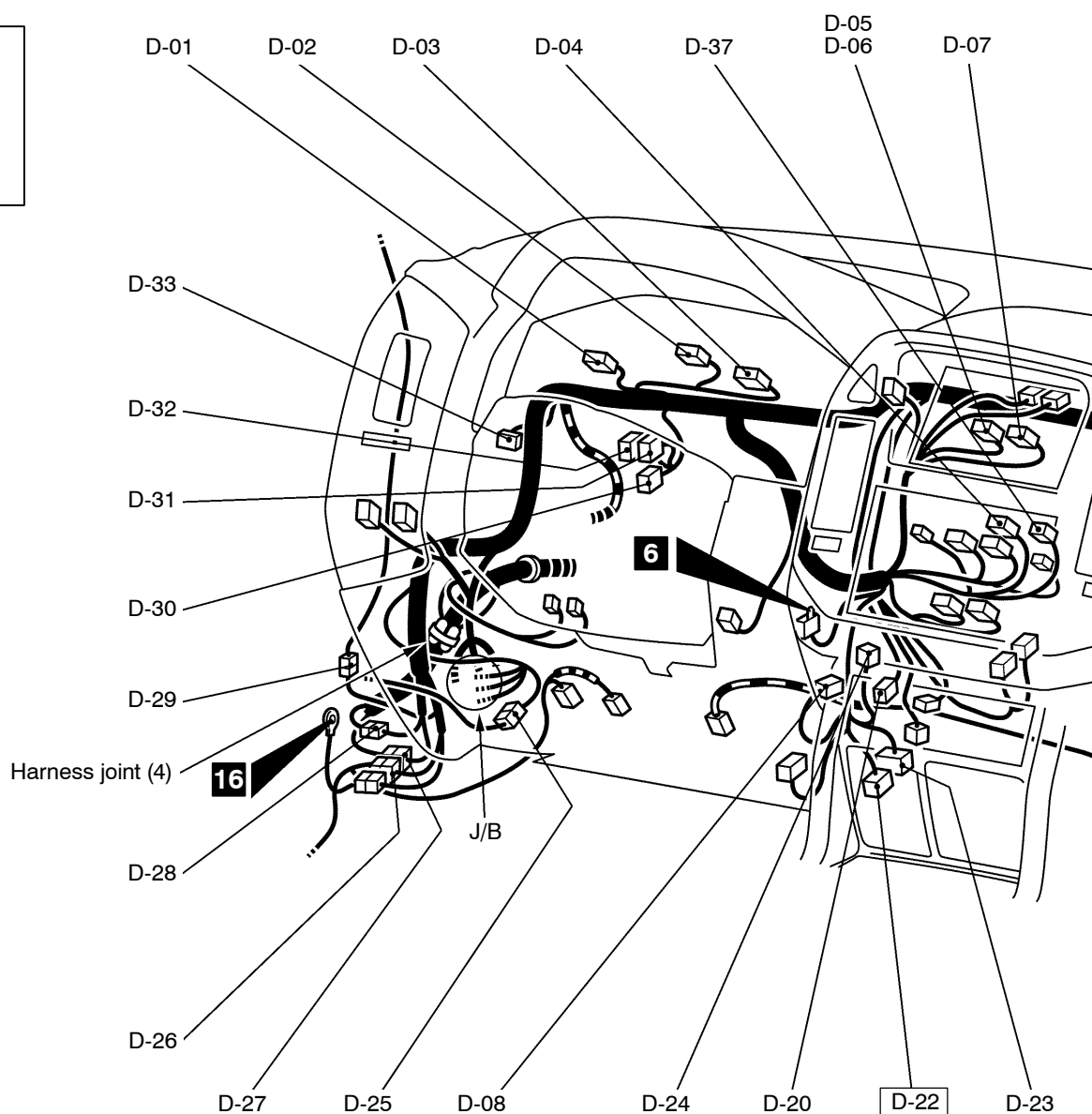


A-28 (1-B)	Horn (HI)
A-29 (1-B)	Horn (LO)
A-30 (2-B)	Ambient temperature sensor
A-31 (2-Y)	Front impact sensor (RH)
A-32 (3-GR)	Headlamp leveling unit (RH)
A-33 (2-B)	Front fog lamp (RH)
A-34 (3-B)	Headlamp (RH)
	<Without discharge type>
A-35 (2-B)	Windshield washer motor
A-36 (4-B)	Headlamp washer motor
A-37 (2-B)	Front turn signal lamp (RH)
A-38 (2-GR)	Position lamp (RH)
A-39 (2-B)	Wheel speed sensor (Front: RH) <ABS>
A-40 (2-B)	Solenoid valve A

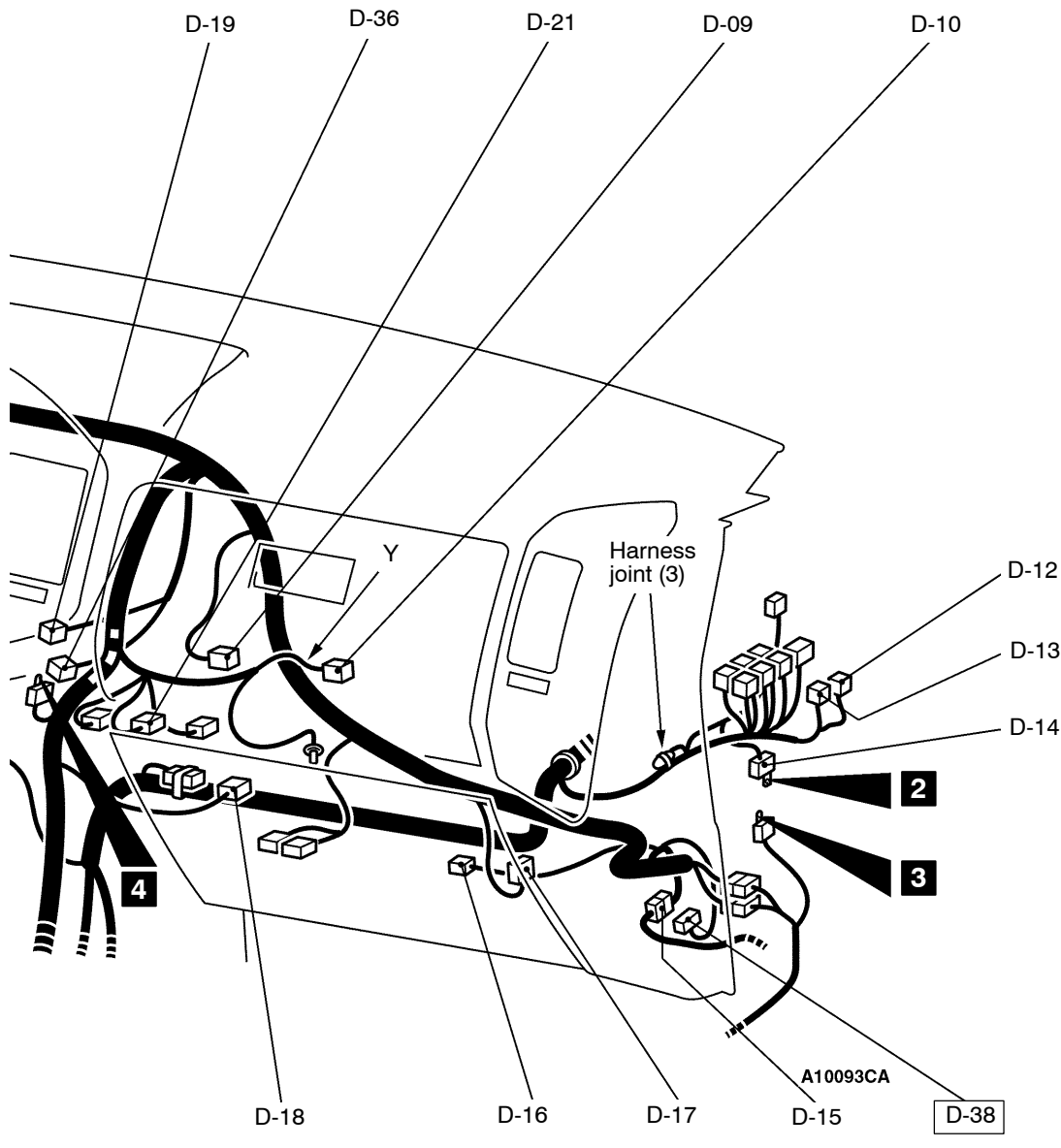
A-41 (2-BR)	Solenoid valve B
A-42 (2-GR)	Side turn signal lamp (RH)
A-43 (5)	PTC heater relay 2 <4M41>
A-47 (2-GR)	High-beam actuator (LH)
	<With discharge type>
A-48 (2-GR)	Headlamp (LH) <With discharge type>
A-49 (2-GR)	Headlamp (RH) <With discharge type>
A-50 (2-GR)	High-beam actuator (RH)
	<With discharge type>

DASH PANEL

L.H. drive vehicles

Main
IndexGroup
TOCConnector
symbol**D** -01
thru
-38

D-01 (17-GR)	Combination meter	D-14 (10)	Earth J/C
D-02 (17-BR)	Combination meter	D-15 (32)	Instrument panel wiring harness and front door wiring harness (Passenger's side) combination
D-03 (25-GR)	Combination meter	D-16 (14)	Motor antenna-ECU
D-04 (14)	Radio	D-17 (2)	Blower motor
D-05 (4)	Clock	D-18 (1)	Glove box lamp switch
D-06 (20-B)	RV meter	D-19 (2)	Heater water temperature sensor <Automatic A/C>
D-07 (16-B)	RV meter	D-20 (5)	Automatic compressor-ECU <Manual A/C (Except for Taiwan)>
D-08 (2)	PTC heater 1 <4M41>	D-21 (10)	Automatic compressor-ECU <Manual A/C (MPI except for Taiwan)>
D-09 (3)	Outside/inside air selection damper control motor		
D-10 (2-R)	Air bag module (squib) (Passenger's side)		
D-12 (4)	A/T control relay		
D-13 (6)	Engine oil level relay <Vehicles for Brazil and Argentina>		



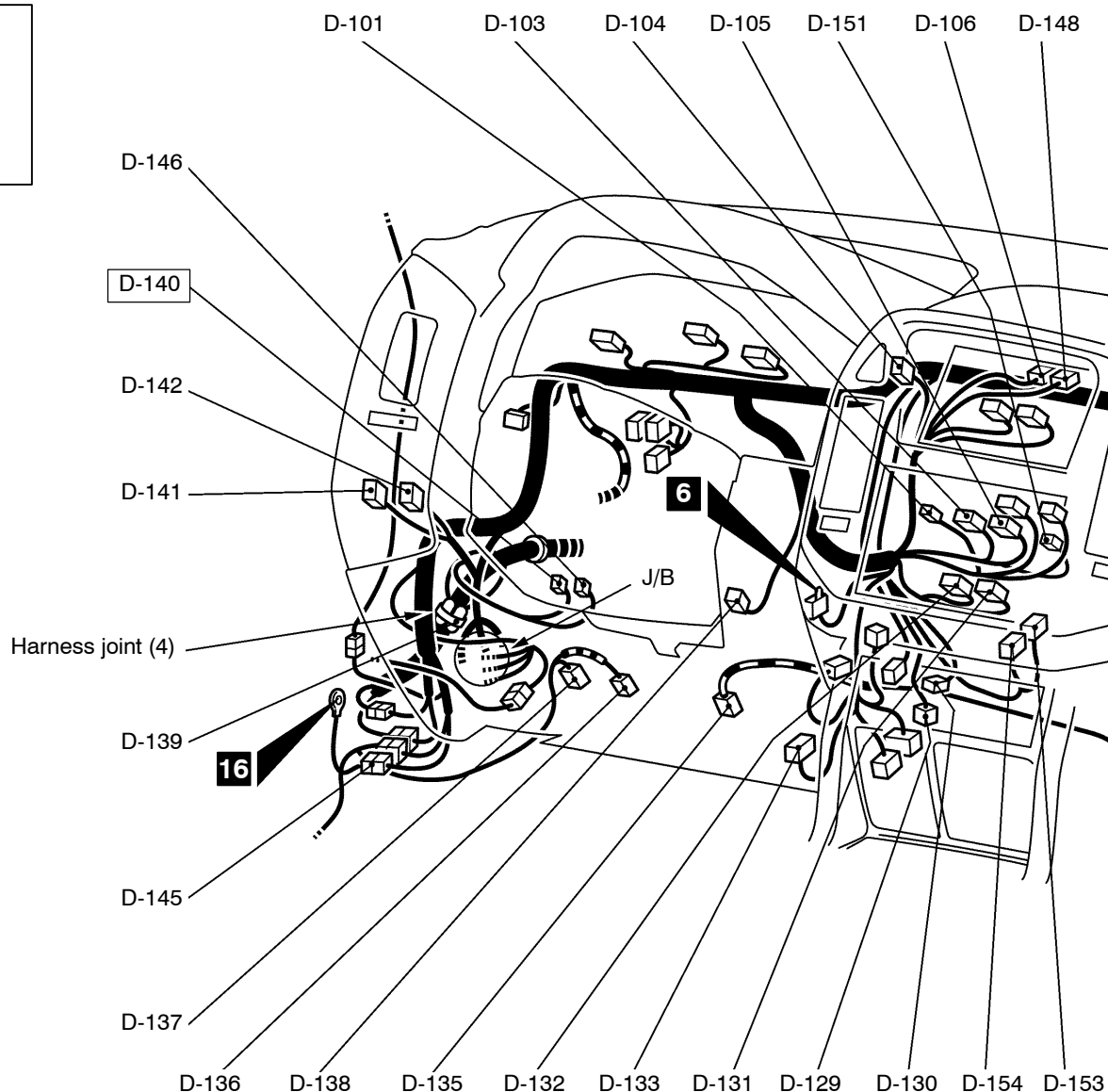
D-22 (13)	Diagnosis connector
D-23 (16-B)	Diagnosis connector
D-24 (7-B)	Mode selection damper control motor and potentiometer <Automatic A/C>
D-25 (32)	Instrument panel wiring harness and front door wiring harness (Driver's side) combination
D-26 (43)	Instrument panel wiring harness and floor wiring harness (LH) combination
D-27 (38)	Instrument panel wiring harness and front wiring harness combination
D-28 (10)	Instrument panel wiring harness and front wiring harness combination

D-29 (13)	Instrument panel wiring harness and roof wiring harness combination
D-30 (33)	J/C (8)
D-31 (33)	J/C (7)
D-32 (33)	J/C (6)
D-33 (33)	J/C (5)
D-36 (2)	PTC heater 2 <4M41>
D-37 (1)	Radio
D-38 (6)	Mirror control unit

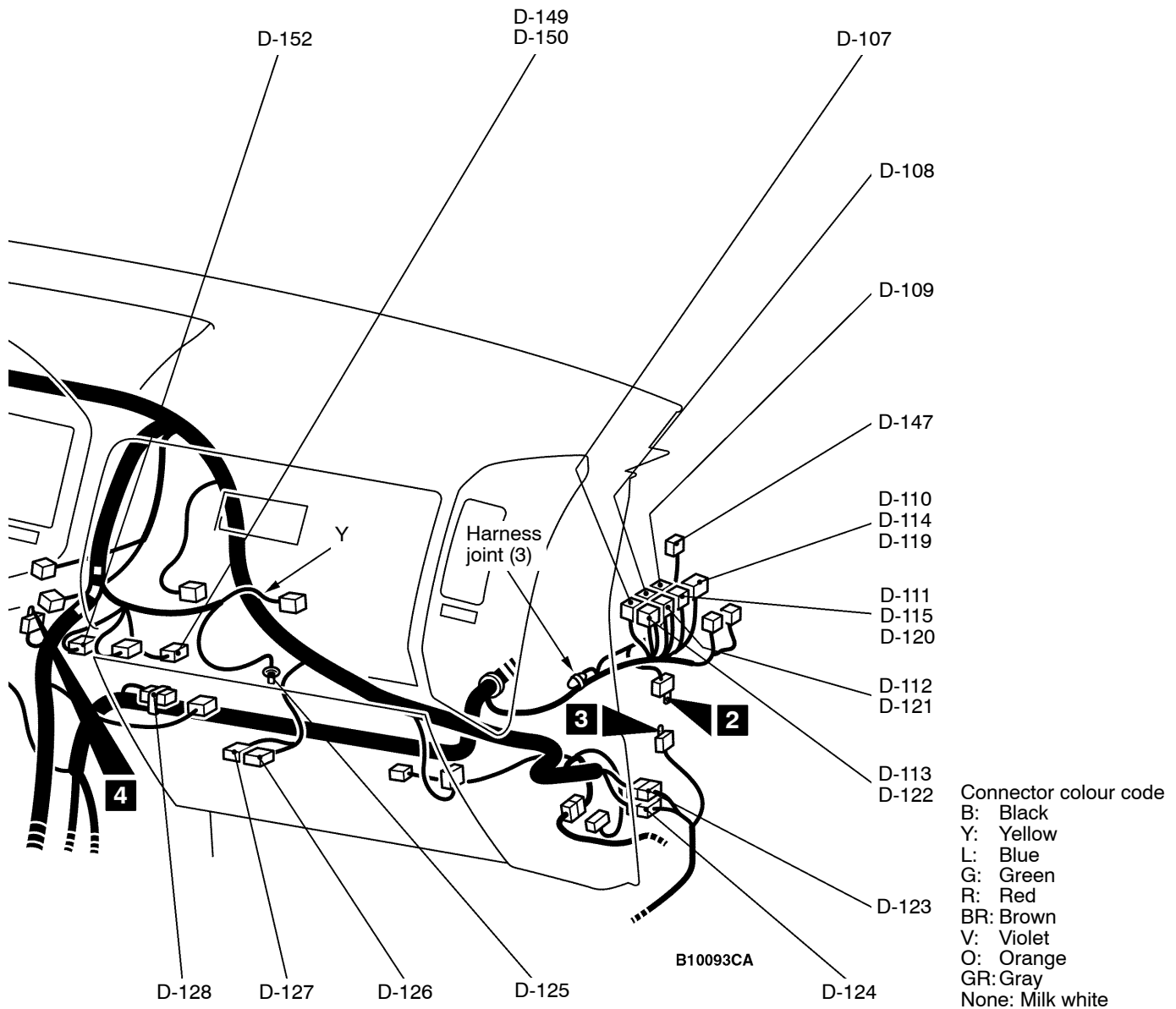
NOTE

Connector numbers enclosed by a frame are newly added or changed.

L.H. drive vehicles

Connector
symbol**D** -101
thru
-154

D-101 (2)	Heater control panel illumination lamp	D-122 (30-GR)	Engine-A/T-ECU <Petrol-A/T>
D-103 (6)	Blower switch <Heater or manual A/C>	D-123 (38)	Instrument panel wiring harness and floor wiring harness (RH) combination
D-104 (4)	Hazard warning switch	D-124 (43)	Instrument panel wiring harness and floor wiring harness (RH) combination
D-105 (12)	A/C switch	D-125 (2)	Glove box lamp
D-106 (2)	Photo sensor <Automatic A/C>	D-126 (4)	Blower linear controller <Automatic A/C>
D-107 (26-L)	A/T-ECU <Diesel>	D-127 (4)	Resistor <Heater or manual A/C>
D-108 (16-L)	A/T-ECU <Diesel>	D-128 (33)	J/C (4)
D-109 (22-L)	A/T-ECU <Diesel>	D-129 (2)	Air thermo sensor <Automatic A/C>
D-110 (26-G)	Engine-ECU <4M41, Petrol-M/T>	D-130 (7)	Air mixing damper control motor and potentiometer <Automatic A/C>
D-111 (16-G)	Engine-ECU <4M41, Petrol-M/T>	D-131 (20-B)	A/C-ECU
D-112 (12-G)	Engine-ECU <4M41, Petrol-M/T>	D-132 (16-B)	A/C-ECU
D-113 (22-G)	Engine-ECU <4M41, Petrol-M/T>	D-133 (12)	Immobilizer-ECU <Vehicles for Taiwan>
D-114 (26-Y)	Glow-ECU <4M40 (With EGR)>	D-135 (8-GR)	Accelerator pedal position sensor <4M41>
D-115 (13)	Glow-ECU <4M40 (Without EGR)>		
D-119 (35-GR)	Engine-A/T-ECU <Petrol-A/T>		
D-120 (26-GR)	Engine-A/T-ECU <Petrol-A/T>		
D-121 (28-R)	Engine-A/T-ECU <Petrol-A/T>		



- D-136 (4) Stop lamp switch
- D-137 (2) Clutch switch <Auto-cruise (M/T)>
- D-138 (6) Heater switch (Warm up switch) <4M41>
- D-139 (2-B) Diode (for super select 4WD II circuit)
- D-140 (6-GR) Headlamp leveling switch
- D-141 (6) Fog lamp switch
- D-142 (11) Remote controlled mirror switch
- D-145 (9) Instrument panel wiring harness and floor wiring harness (LH) combination
- D-146 (6-L) Rheostat
- D-147 (16-B) Auto-cruise-ECU <Petrol>
- D-148 (2-B) Theft-alarm indicator lamp <Vehicles for Taiwan>
- D-149 (7) Automatic compressor-ECU <Manual A/C (4M40-A/T)> or jumper connector <Manual A/C (4M40-M/T)>

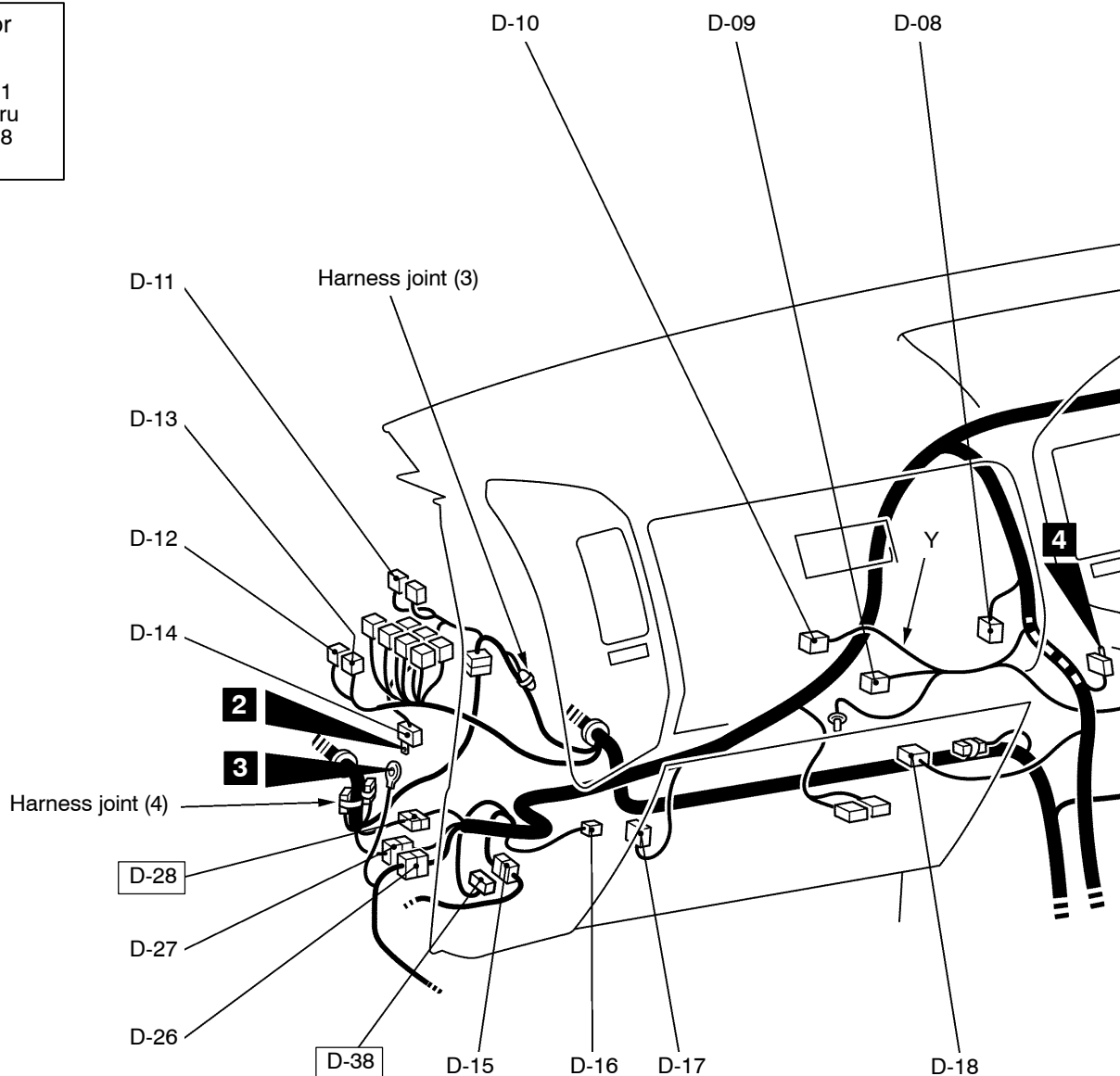
- D-150 (7) A/C-ECU <Automatic A/C (4M40-A/T)> or jumper connector <Automatic A/C (4M40-M/T)>
- D-151 (3) Rear window defogger switch <Manual A/C (Vehicles for Taiwan)>
- D-152 (2) Thermo sensor <Manual A/C (Vehicles for Taiwan)>
- D-153 (8-B) Automatic compressor-ECU <Manual A/C (Vehicles for Taiwan)>
- D-154 (20-B) Automatic compressor-ECU <Manual A/C (Vehicles for Taiwan)>

NOTE

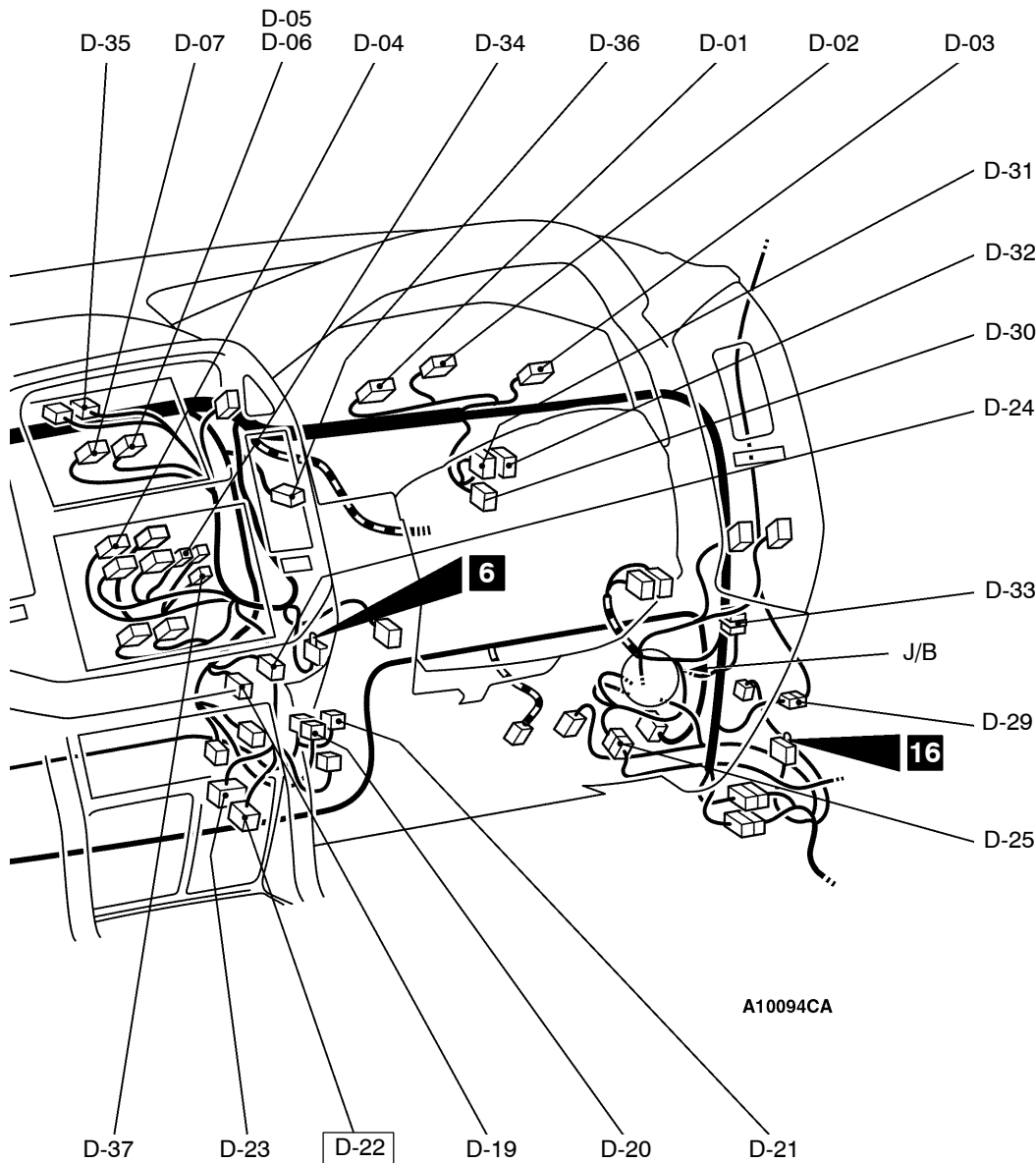
Connector numbers enclosed by a frame are newly added.

DASH PANEL

R.H. drive vehicles

Main
IndexGroup
TOCConnector
symbol**D** -01
thru
-38

D-01 (17-GR)	Combination meter	D-13 (6)	Engine oil level relay <Vehicles for South Africa>
D-02 (17-GR)	Combination meter	D-14 (10)	Earth J/C
D-03 (25-GR)	Combination meter	D-15 (32)	Instrument panel wiring harness and front door wiring harness (Passenger's side) combination
D-04 (14)	Radio	D-16 (14)	Motor antenna-ECU
D-05 (4)	Clock	D-17 (2)	Blower motor
D-06 (20-B)	RV meter or center display	D-18 (1)	Glove box lamp switch
D-07 (16-B)	RV meter or center display	D-19 (2)	Heater water temperature sensor <Automatic A/C>
D-08 (2)	PTC heater 1 <4M41>	D-20 (5)	Automatic compressor-ECU <Manual A/C>
D-09 (3)	Outside/inside air selection damper control motor	D-21 (10)	Automatic compressor-ECU <Manual A/C (MPI)>
D-10 (2-R)	Air bag module (squib) (Passenger's side)		
D-11 (26-B)	Throttle valve controller <GDI>		
D-12 (4)	A/T control relay		



Connector colour code
 B: Black
 Y: Yellow
 L: Blue
 G: Green
 R: Red
 BR: Brown
 V: Violet
 O: Orange
 GR: Gray
 None: Milk white

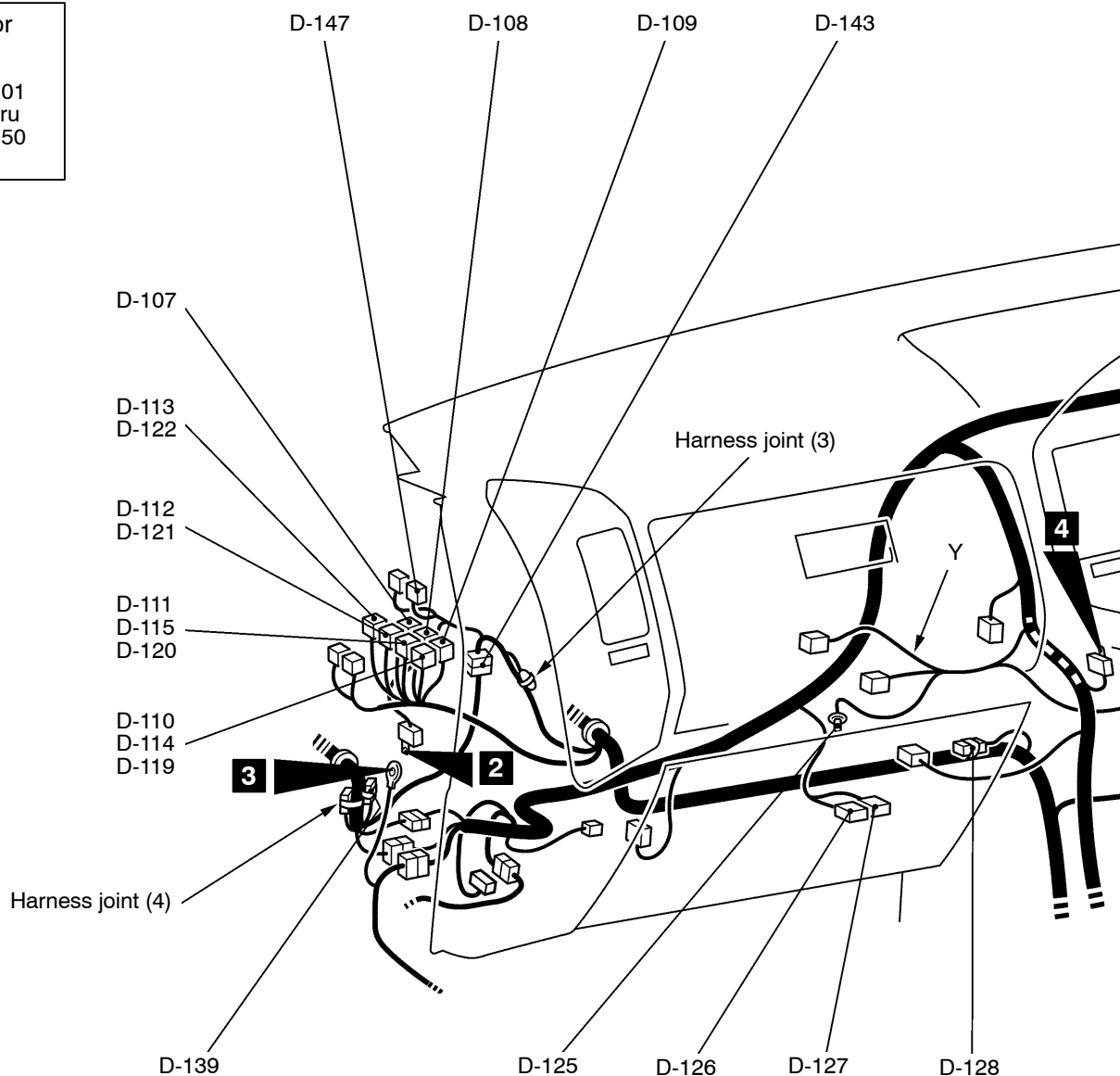
D-22 (13)	Diagnosis connector
D-23 (16-B)	Diagnosis connector
D-24 (7-B)	Mode selection damper control motor and potentiometer <Automatic A/C>
D-25 (32)	Instrument panel wiring harness and front door wiring harness (Driver's side) combination
D-26 (43)	Instrument panel wiring harness and floor wiring harness (LH) combination
D-27 (38)	Instrument panel wiring harness and front wiring harness combination
D-28 (10)	Instrument panel wiring harness and front wiring harness combination
D-29 (13)	Instrument panel wiring harness and roof wiring harness combination

D-30 (33)	J/C (8)
D-31 (33)	J/C (7)
D-32 (33)	J/C (6)
D-33 (33)	J/C (5)
D-34 (1)	Glass antenna <Vehicles for Hong Kong>
D-35 (3)	Automatic lighting control sensor <Vehicles for Hong Kong>
D-36 (2)	PTC heater 2 <4M41>
D-37 (1)	Radio
D-38 (6)	Mirror control unit

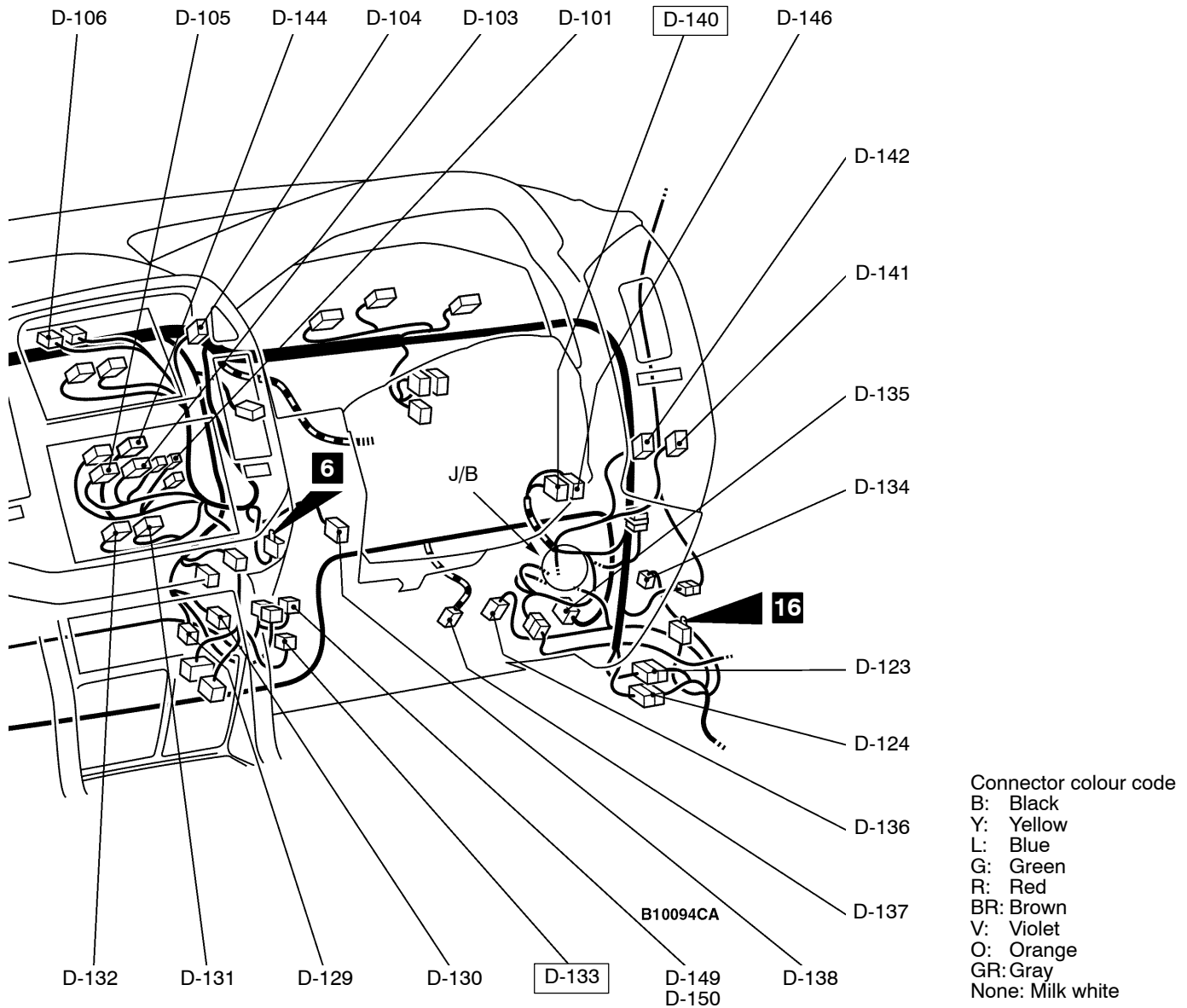
NOTE

Connector numbers enclosed by a frame are newly added or changed.

R.H. drive vehicles

Connector
symbol**D** -101
thru
-150

D-101 (2)	Heater control panel illumination lamp	D-120 (26-GR)	Engine-A/T-ECU <Petrol-A/T>
D-103 (6)	Blower switch <Heater or manual A/C>	D-121 (28-R)	Engine-A/T-ECU <Petrol-A/T>
D-104 (4)	Hazard warning switch	D-122 (30-GR)	Engine-A/T-ECU <Petrol-A/T>
D-105 (12)	A/C switch	D-123 (38)	Instrument panel wiring harness and floor wiring harness (RH) combination
D-106 (2)	Photo sensor <Automatic A/C>	D-124 (43)	Instrument panel wiring harness and floor wiring harness (RH) combination
D-107 (26-L)	A/T-ECU <Diesel>	D-125 (2)	Glove box lamp
D-108 (16-L)	A/T-ECU <Diesel>	D-126 (4)	Blower linear controller <Automatic A/C>
D-109 (22-L)	A/T-ECU <Diesel>	D-127 (4)	Resistor <Heater or manual A/C>
D-110 (26-G)	Engine-ECU <4M41, MPI-M/T>	D-128 (33)	J/C (4)
D-111 (16-G)	Engine-ECU <4M41, MPI-M/T>	D-129 (2)	Air thermo sensor <Automatic A/C>
D-112 (12-G)	Engine-ECU <4M41, MPI-M/T>	D-130 (7)	Air mixing damper control motor and potentiometer <Automatic A/C>
D-113 (22-G)	Engine-ECU <4M41, MPI-M/T>	D-131 (20-B)	A/C-ECU
D-114 (26-Y)	Glow-ECU <4M40 (With EGR)>		
D-115 (14)	Glow-ECU <4M40 (Without EGR)>		
D-119 (35-GR)	Engine-A/T-ECU <Petrol-A/T>		



D-132 (16-B)	A/C-ECU
D-133 (12)	Immobilizer-ECU <Vehicles for Australia (4M40)> or no connection <Vehicles for South Africa (4M41)>
D-134 (2-B)	Wide open throttle switch <A/T (Vehicles for South Africa)>
D-135 (8-GR)	Accelerator pedal position sensor <4M41, GDI>
D-136 (4)	Stop lamp switch
D-137 (2)	Clutch switch <Auto-cruise (M/T)>
D-138 (6)	Heater switch (Warm up switch) <4M41>
D-139 (2-B)	Diode (for super select 4WD II circuit)
D-140 (6-GR)	Headlamp leveling switch
D-141 (6)	Fog lamp switch
D-142 (11)	Remote controlled mirror switch

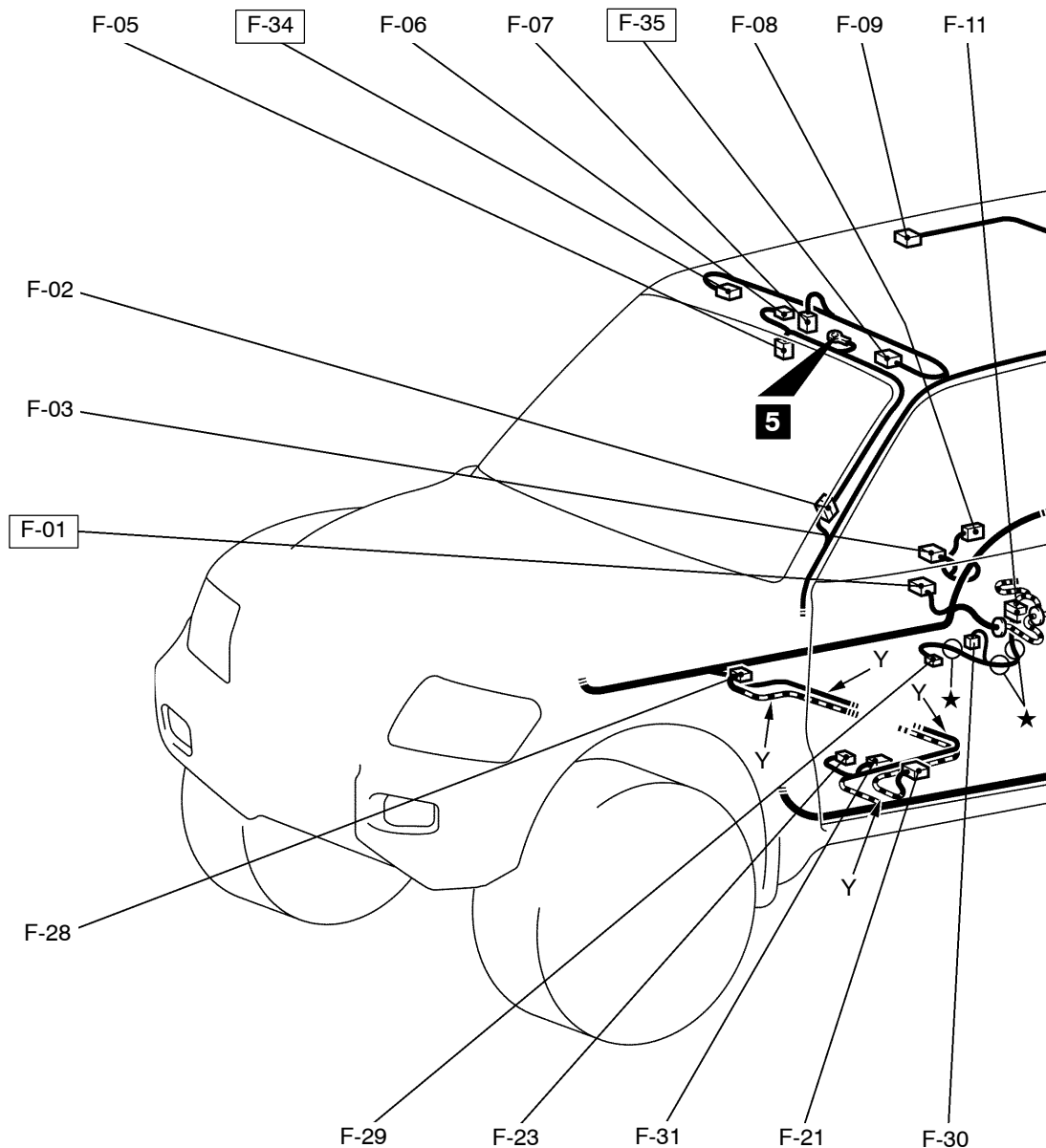
D-143 (13)	Front wiring harness and control wiring harness combination
D-144 (16)	Radio <With center display>
D-146 (6-L)	Rheostat
D-147 (16-B)	Auto-cruise-ECU <MPI>
D-149 (7)	Automatic compressor-ECU <Manual A/C (4M40-A/T)> or jumper connector <Manual A/C (4M40-M/T)>
D-150 (7)	A/C-ECU <Automatic A/C (4M40-A/T)> or jumper connector <Automatic A/C (4M40-M/T)>

NOTE

Connector numbers enclosed by a frame are newly added.

FRONT FLOOR AND ROOF

Short wheelbase models <L.H. drive vehicles>

Main
IndexGroup
TOCConnector
symbol**F****F-01** (2-Y)

F-02 (6)

F-03 (3)

F-05 (6-B)

F-06 (10)

F-07 (2)

F-08 (2)

F-09 (3)

Side impact sensor (RH)

Roof wiring harness and pillar wiring harness combination

Front door switch (RH)

Sunroof switch

Sunroof motor assembly

Room lamp

Rear speaker (RH)

Rear personal lamp (RH)

F-11 (4-B)

F-12 (3)

F-13 (2-GR)

F-15 (2)

F-16 (6-GR)

Floor wiring harness (RH) and fuel wiring harness combination

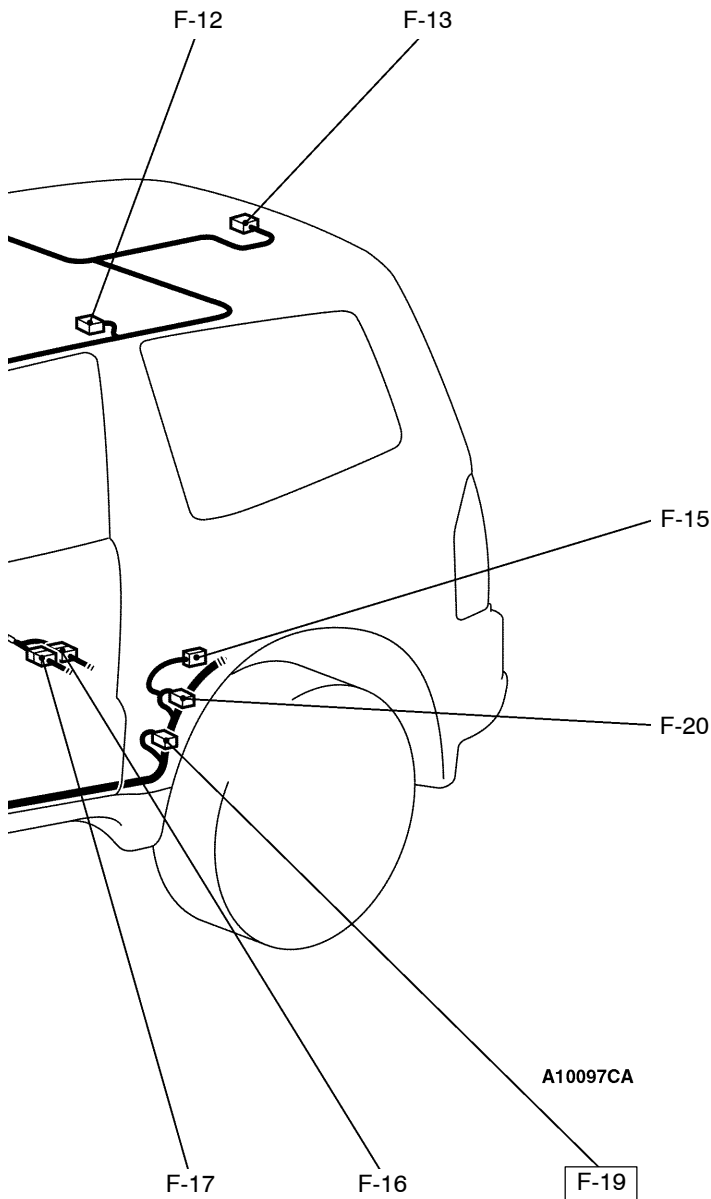
Rear personal lamp (LH)

Luggage compartment lamp

Rear speaker (LH)

Floor wiring harness (RH) and frame wiring harness combination

<Vehicles for Brazil>



Connector colour code
 B: Black
 Y: Yellow
 L: Blue
 G: Green
 R: Red
 BR: Brown
 V: Violet
 O: Orange
 GR: Gray
 None: Milk white

F-17 (8-B) Floor wiring harness (RH) and frame wiring harness combination
 <Except for Brazil>
 F-19 (2-Y) Side impact sensor (LH)
 F-20 (3) Front door switch (LH)
 F-21 (2-R) Side air bag module (squib) (LH)
 F-23 (3) Power seat assembly
 F-28 (2-R) Side air bag module (squib) (RH)

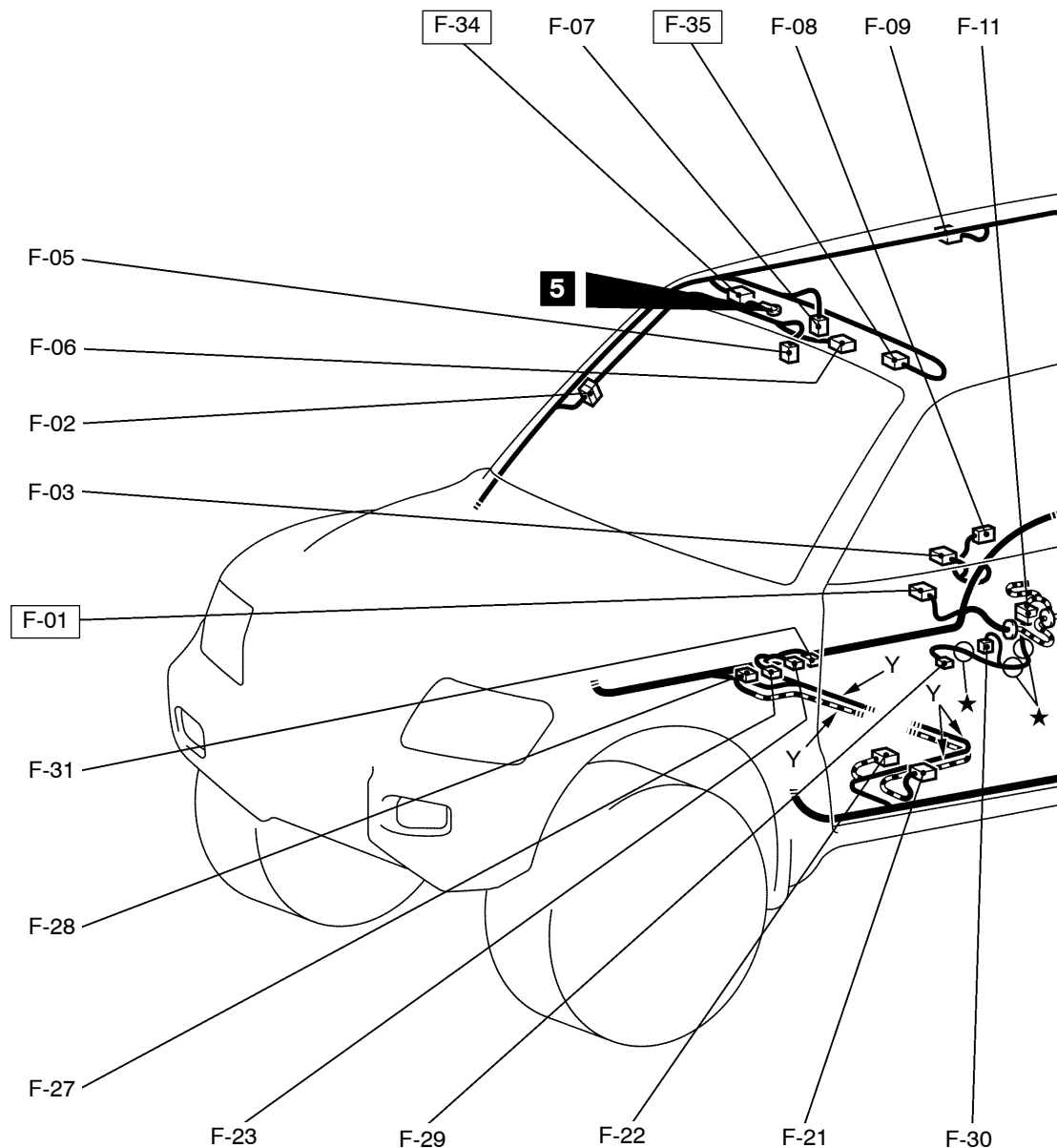
F-29 (3-B) Fuel gauge unit
 F-30 (5-GR) Fuel pump
 F-31 (2) Seat belt switch <Vehicles for GCC>
 F-34 (2) Vanity mirror lamp (RH)
 F-35 (2) Vanity mirror lamp (LH)

NOTE

Connector numbers enclosed by a frame F-19 are newly added or changed.

FRONT FLOOR AND ROOF

Short wheelbase models <R.H. drive vehicles>

Main
IndexGroup
TOCConnector
symbol**F**

F-01 (2-Y)
F-02 (6)

F-03 (3)
F-05 (6-B)
F-06 (10)
F-07 (2)
F-08 (2)
F-09 (3)

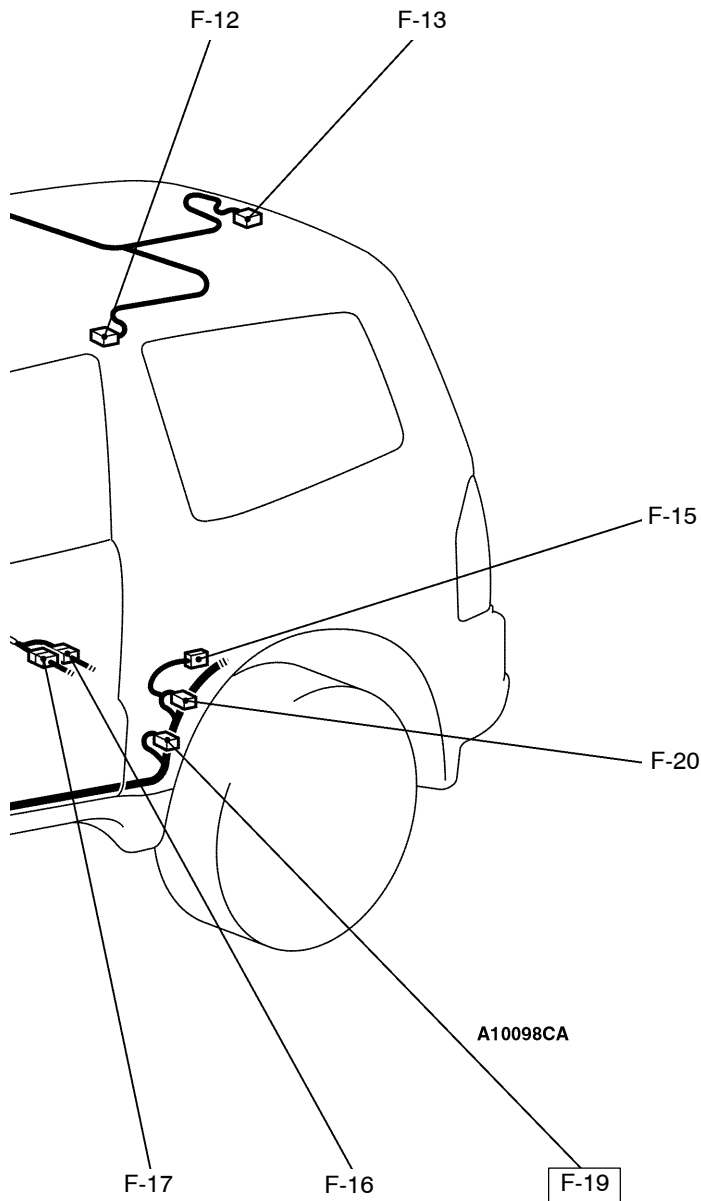
Side impact sensor (RH)
Roof wiring harness and pillar wiring harness combination
Front door switch (RH)
Sunroof switch
Sunroof motor assembly
Room lamp
Rear speaker (RH)
Rear personal lamp (RH)

F-11 (4-B)

F-12 (3)
F-13 (2-GR)
F-15 (2)
F-16 (6-GR)

F-17 (8-B)

Floor wiring harness (RH) and fuel wiring harness combination
Rear personal lamp (LH)
Luggage compartment lamp
Rear speaker (LH)
Floor wiring harness (RH) and frame wiring harness combination
<Vehicles for South Africa>
Floor wiring harness (RH) and frame wiring harness combination



Connector colour code
 B: Black
 Y: Yellow
 L: Blue
 G: Green
 R: Red
 BR: Brown
 V: Violet
 O: Orange
 GR: Gray
 None: Milk white

F-19 (2-Y)	Side impact sensor (LH)
F-20 (3)	Front door switch (LH)
F-21 (2-R)	Side air bag module (squib) (LH)
F-22 (3)	Heated seat assembly (LH) <Vehicles for South Africa>
F-23 (3)	Power seat assembly
F-27 (3)	Heated seat assembly (RH) <Vehicles for South Africa>
F-28 (2-R)	Side air bag module (squib) (RH)
F-29 (3-B)	Fuel gauge unit

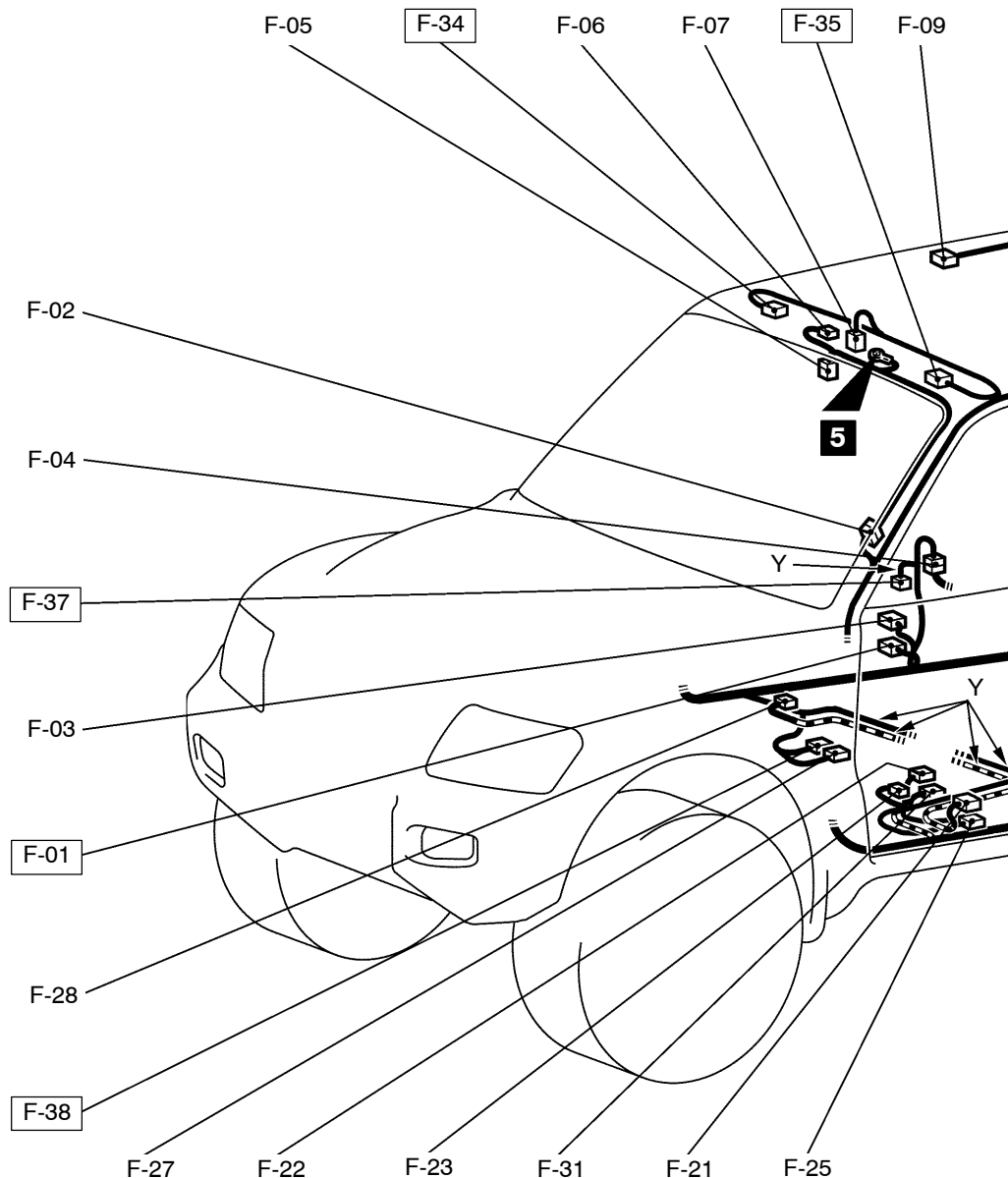
F-30 (5-GR)	Fuel pump
F-31 (2)	Seat belt switch <Vehicles for Hong Kong>
F-34 (2)	Vanity mirror lamp (RH)
F-35 (2)	Vanity mirror lamp (LH)

NOTE

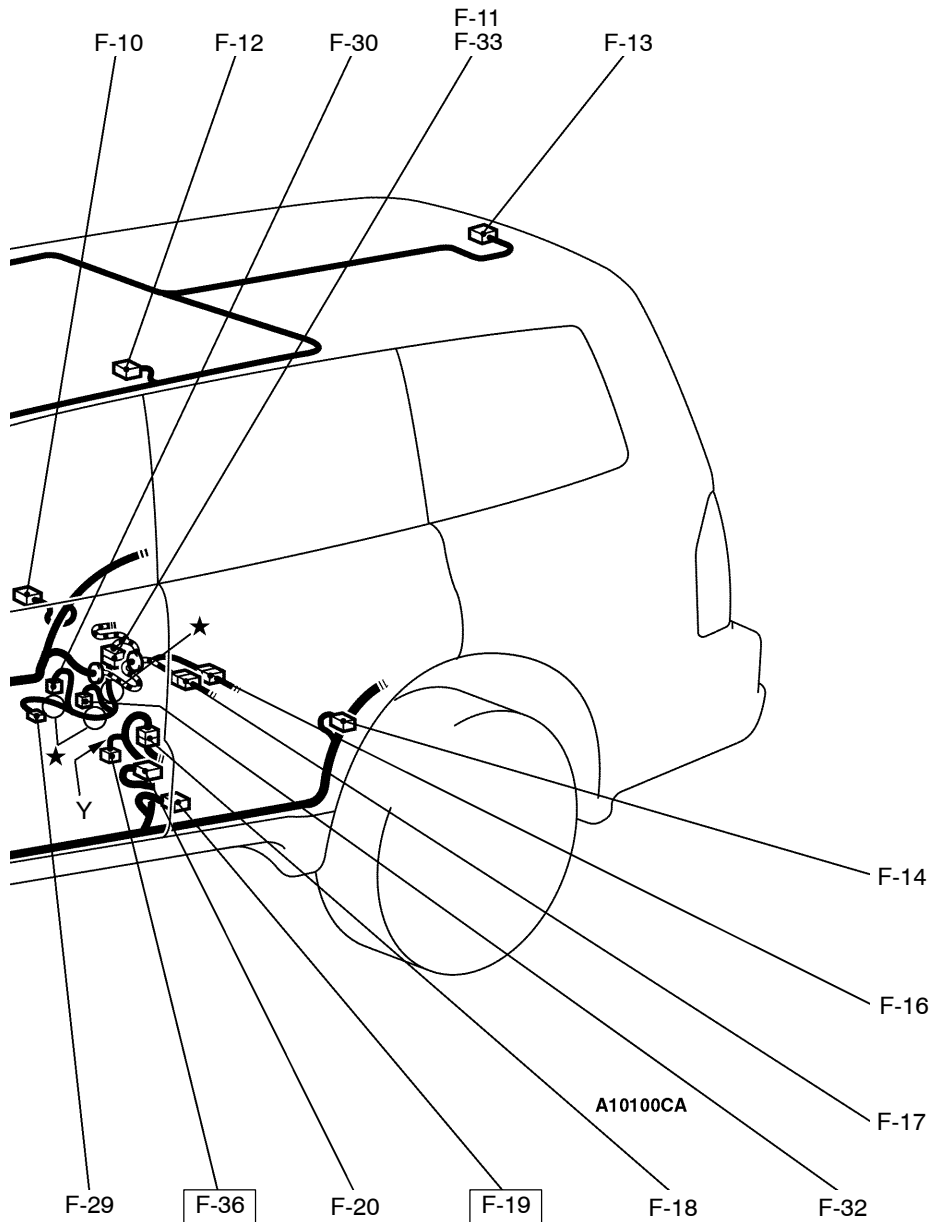
Connector numbers enclosed by a frame are newly added or changed.

FRONT FLOOR AND ROOF

Long wheelbase models <L.H. drive vehicles>

Main
IndexGroup
TOCConnector
symbol**F**

F-01 (2-Y)	Side impact sensor (RH)	F-12 (3)	Rear personal lamp (LH)
F-02 (6)	Roof wiring harness and pillar wiring harness combination	F-13 (2-GR)	Luggage compartment lamp
F-03 (3)	Front door switch (RH)	F-14 (3)	Rear door switch (LH)
F-04 (14)	Floor wiring harness (RH) and rear door wiring harness (RH) combination	F-16 (6-GR)	Floor wiring harness (RH) and frame wiring harness combination <Vehicles for Brazil>
F-05 (6-B)	Sunroof switch	F-17 (8-B)	Floor wiring harness (RH) and frame wiring harness combination <Except for Brazil>
F-06 (10)	Sunroof motor assembly	F-18 (14)	Floor wiring harness (LH) and rear door wiring harness (LH) combination
F-07 (2)	Room lamp	F-19 (2-Y)	Side impact sensor (LH)
F-09 (3)	Rear personal lamp (RH)	F-20 (3)	Front door switch (LH)
F-10 (3)	Rear door switch (RH)	F-21 (2-R)	Side air bag module (squib) (RH)
F-11 (4-B)	Floor wiring harness (RH) and fuel wiring harness combination <Except for Taiwan>		



Connector colour code
 B: Black
 Y: Yellow
 L: Blue
 G: Green
 R: Red
 BR: Brown
 V: Violet
 O: Orange
 GR: Gray
 None: Milk white

- F-22 (3) Heated seat assembly (LH)
 <Vehicles for Argentina>
 F-23 (3) Power seat assembly (Driver's side)
 F-25 (8) No connection <Vehicles for Argentina>
 F-27 (3) Heated seat assembly (RH)
 <Vehicles for Argentina>
 F-28 (2-R) Side air bag module (squib) (RH)
 F-29 (3-B) Fuel gauge unit
 F-30 (5-GR) Fuel pump
 F-31 (2) Seat belt switch <Vehicles for GCC>
 F-32 (3-B) Fuel tank differential pressure sensor
 <Vehicles for Taiwan>
 F-33 (8-B) Floor wiring harness (RH) and fuel wiring
 harness combination
 <Vehicles for Taiwan>

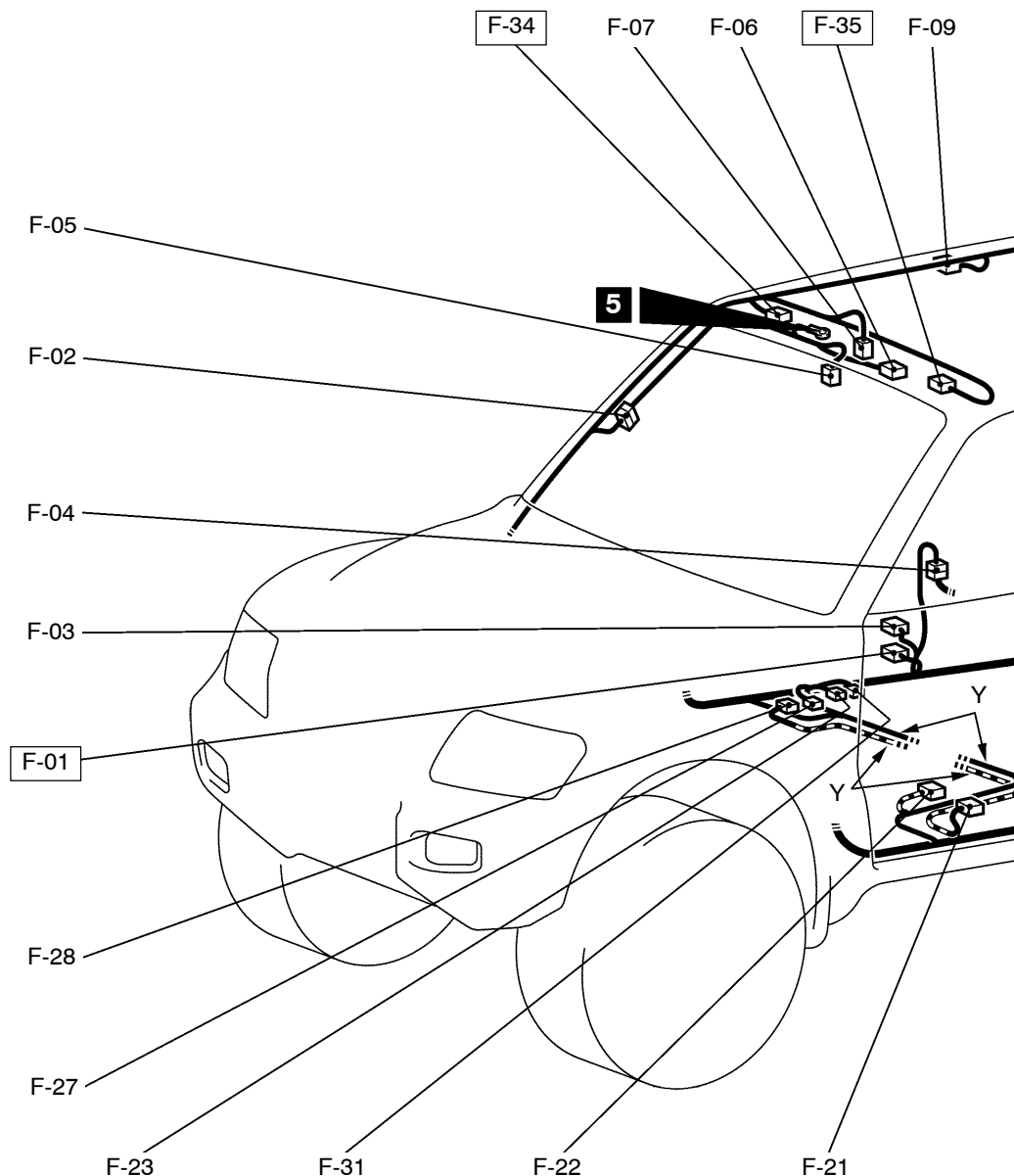
- F-34 (2) Vanity mirror lamp (RH)
 F-35 (2) Vanity mirror lamp (LH)
 F-36 (2-R) Seat belt pre-tensioner (LH)
 <Vehicles for Taiwan>
 F-37 (2-R) Seat belt pre-tensioner (RH)
 <Vehicles for Taiwan>
 F-38 (3) Power seat assembly (Passenger's side)
 <Vehicles for Taiwan>

NOTE

Connector numbers enclosed by a frame are newly added or changed.

FRONT FLOOR AND ROOF

Long wheelbase models <R.H. drive vehicles>

Main
IndexGroup
TOCConnector
symbol**F****F-01** (2-Y)

F-02 (6)

F-03 (3)

F-04 (14)

F-05 (6-B)

F-06 (10)

F-07 (2)

F-09 (3)

F-10 (3)

Side impact sensor (RH)

Roof wiring harness and pillar wiring harness combination

Front door switch (RH)

Floor wiring harness (RH) and rear door wiring harness (RH) combination

Sunroof switch

Sunroof motor assembly

Room lamp

Rear personal lamp (RH)

Rear door switch (RH)

F-11 (4-B)

F-12 (3)

F-13 (2-GR)

F-14 (3)

F-16 (6-GR)

F-17 (8-B)

Floor wiring harness (RH) and fuel wiring harness combination

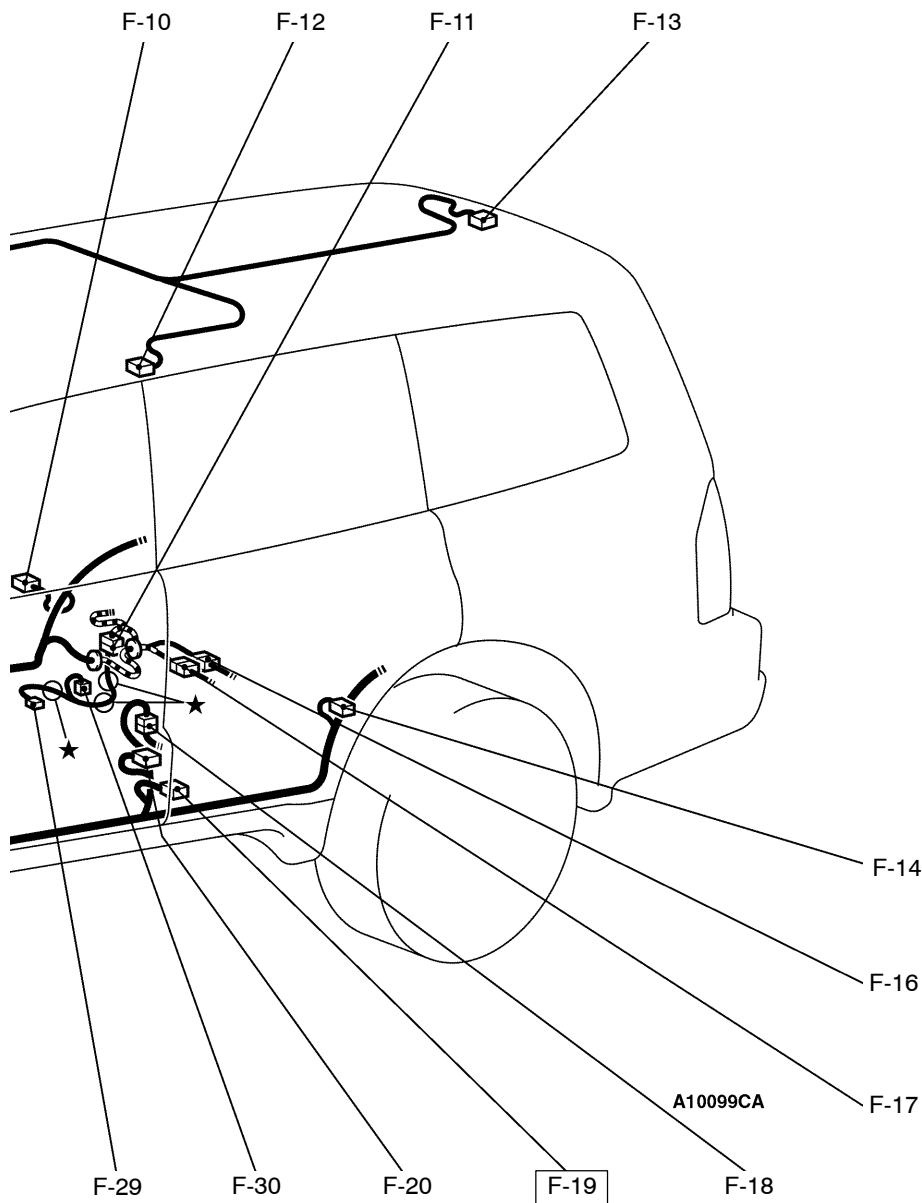
Rear personal lamp (LH)

Luggage compartment lamp

Rear door switch (LH)

Floor wiring harness (RH) and frame wiring harness combination <Vehicles for Hong Kong and South Africa>

Floor wiring harness (RH) and frame wiring harness combination



Connector colour code
 B: Black
 Y: Yellow
 L: Blue
 G: Green
 R: Red
 BR: Brown
 V: Violet
 O: Orange
 GR: Gray
 None: Milk white

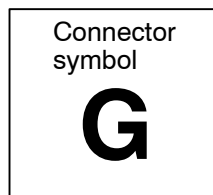
F-18 (14) Floor wiring harness (LH) and rear door wiring harness (LH) combination
 F-19 (2-Y) Side impact sensor (LH)
 F-20 (3) Front door switch (LH)
 F-21 (2-R) Side air bag module (squib) (LH)
 F-22 (3) Heated seat assembly (LH) <Vehicles for Hong Kong and South Africa>
 F-23 (3) Power seat assembly
 F-27 (3) Heated seat assembly (RH) <Vehicles for Hong Kong and South Africa>

F-28 (2-R) Side air bag module (squib) (RH)
 F-29 (3-B) Fuel gauge unit
 F-30 (5-GR) Fuel pump
 F-31 (2) Seat belt switch
 <Vehicles for Hong Kong>
 F-34 (2) Vanity mirror lamp (RH)
 F-35 (2) Vanity mirror lamp (LH)

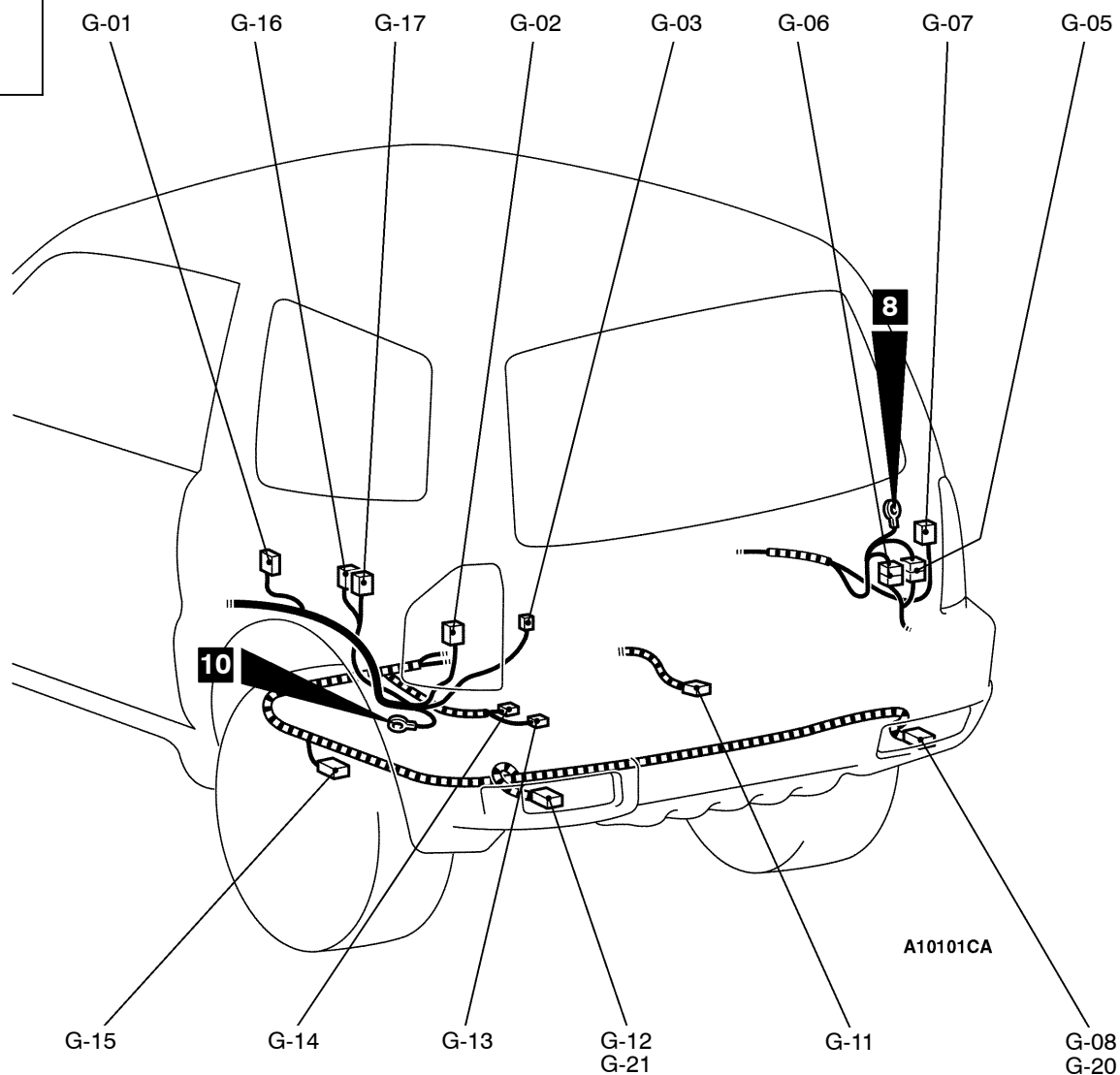
NOTE

Connector numbers enclosed by a frame F-19 are newly added or changed.

REAR FLOOR AND UNDER FLOOR

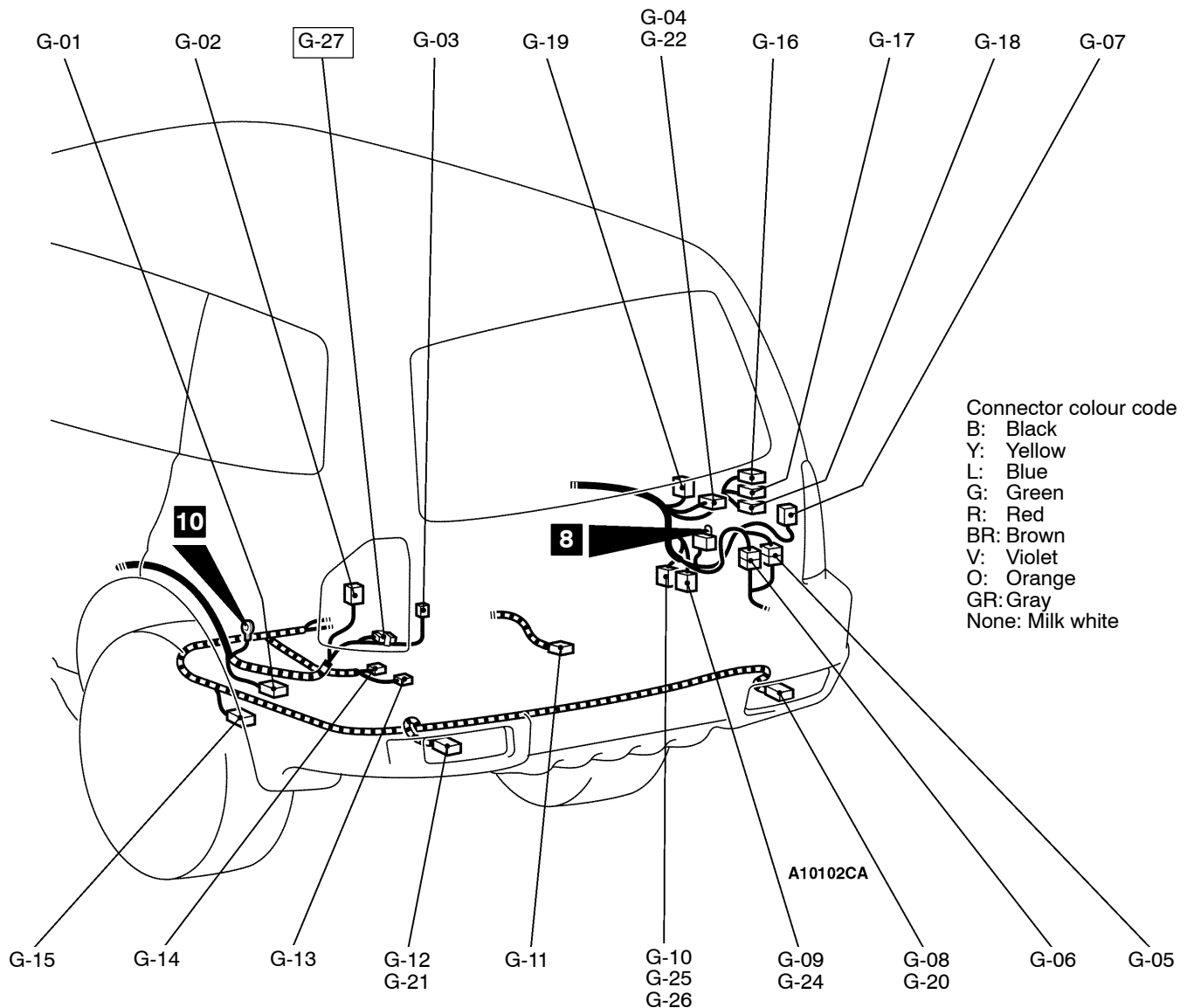
Main
IndexGroup
TOC

<Short wheelbase models>



G-01 (10)	Rear differential lock-ECU	G-07 (6-B)	Rear combination lamp (RH)
G-02 (6-B)	Rear combination lamp (LH)	G-08 (4-B)	Rear combination lamp (RH) <Vehicles for Australia, Brazil and South Africa>
G-03 (3)	Back door switch	G-09 (4)	Rear heater unit
G-04 (10)	Rear blower unit <With rear heater (built-in under floor type) or rear cooler>	G-10 (4)	Rear heater unit
G-05 (9)	Floor wiring harness (RH) and back door wiring harness combination <Vehicles for Hong Kong, South Africa and Taiwan>	G-11 (2-B)	Wheel speed sensor (Rear: RH) <ABS>
G-06 (10)	Floor wiring harness (RH) and back door wiring harness combination		

<Long wheelbase models>



G-12 (4-B) Rear combination lamp (LH) <Vehicles for Australia, Brazil and South Africa>
 G-13 (2-GR) Rear differential lock detection switch
 G-14 (2-BR) Rear differential lock air pump
 G-15 (2-B) Wheel speed sensor (Rear: LH) <ABS>
 G-16 (1-B) Accessory socket
 G-17 (1) Accessory socket
 G-18 (3) Concent <Vehicles for Hong Kong>
 G-19 (12) AC inverter <Vehicles for Hong Kong>
 G-20 (2) Back-up lamp (RH) <Vehicles for General Export and GCC>

G-21 (2) Back-up lamp (LH) <Vehicles for General Export and GCC>
 G-22 (10) Rear A/C unit
 G-24 (4) Rear A/C unit
 G-25 (4) Rear cooler unit
 G-26 (4) Rear A/C unit
 G-27 (1) No connection <Vehicles for Hong Kong>

NOTE

Connector numbers enclosed by a frame are newly added.